

Houston Pilots Forecast Package



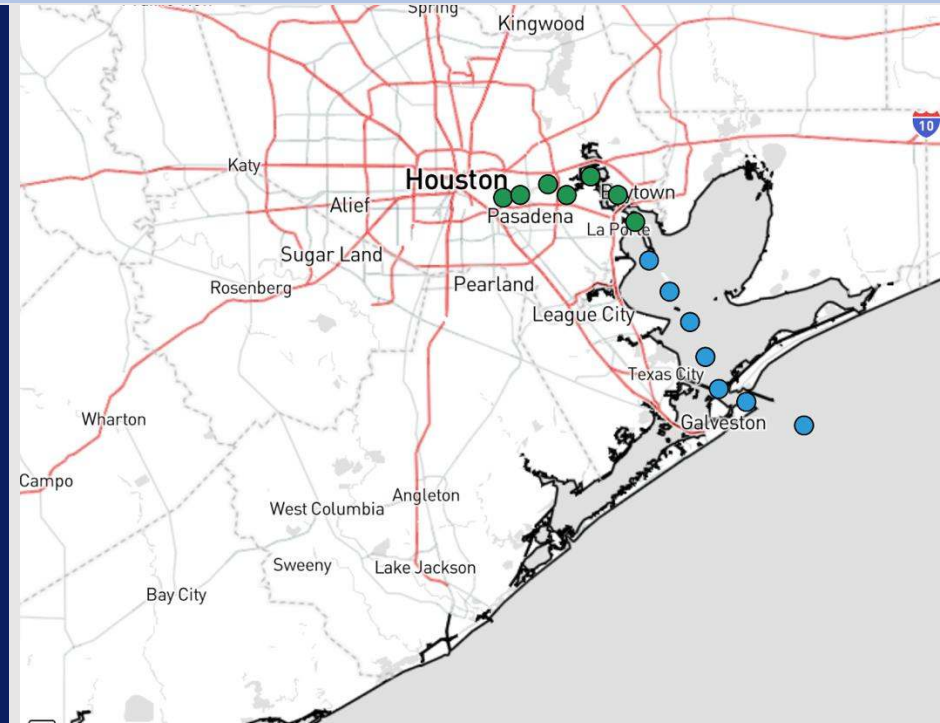
Updated: 12:30 PM CT

Friday, December 6, 2024

Forecaster: Adam Feick

Weather Headlines

- Dry conditions are favored through the end of the day before rain showers return on Saturday.
- Wind gusts of 20 - 25 kts will continue into the weekend.
- Monitoring a low-end risk of Sea Fog early SUN AM between isolated showers.

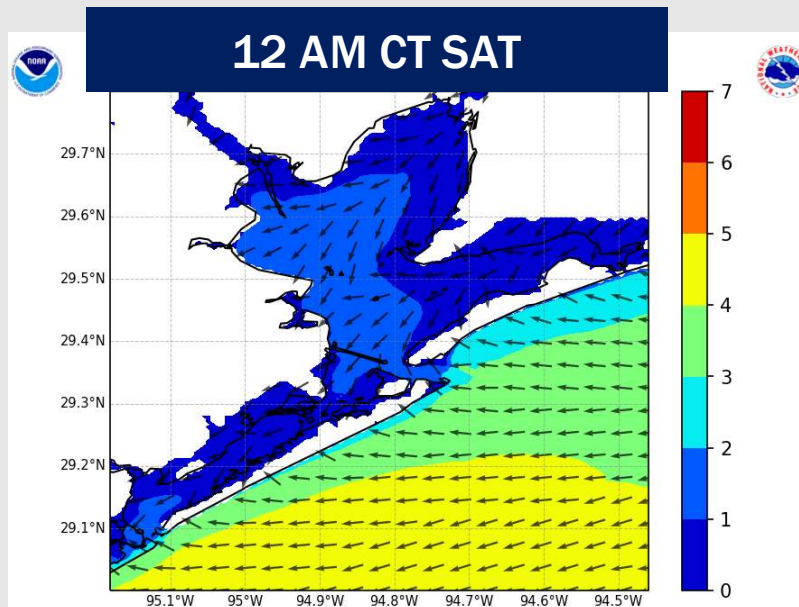
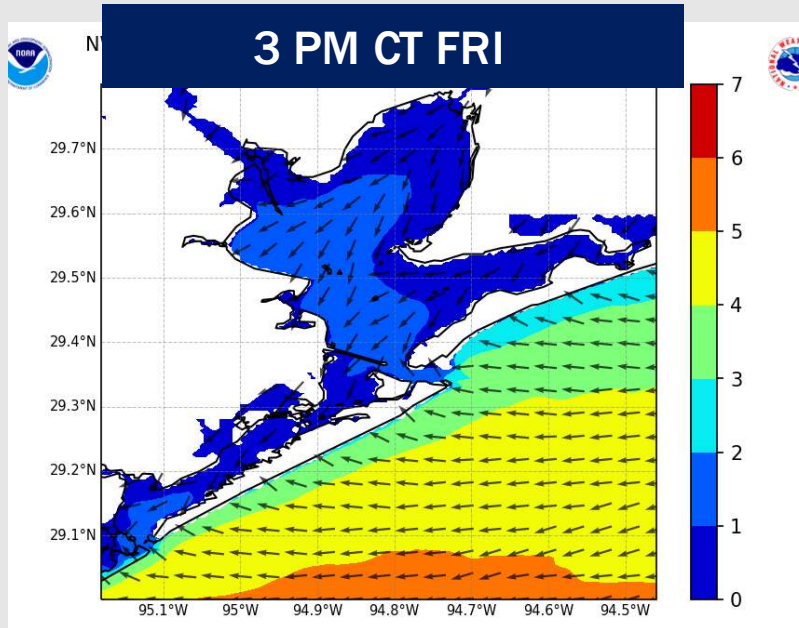


Current Radar: 12:07 PM CT



As always, please do not hesitate to reach out to us with any forecast questions via the chat option on Clarity or our on-call number, **(317)-560-8122** press 1 for forecast questions.

Wave Height Forecast Update



Wave Heights currently at 4' – 5' will slowly decrease through the rest of the day.

From 3 PM – 6 PM, wave heights will decrease to 3' - 4'.

Favoring wave heights to remain at 3' - 4' throughout the weekend.

Houston Pilots Extended Range Visibility Report



Monday 12/9/24

Fog not favored for MON.

Forecast Confidence



Wednesday 12/11/24

Fog not favored for WED.

Forecast Confidence



Tuesday 12/10/24

Fog not favored for TUE.

Forecast Confidence



Chance for Fog

Monday AM	Unlikely
Monday PM	Unlikely
Tuesday AM	Unlikely
Tuesday PM	Unlikely
Wednesday AM	Unlikely
Wednesday PM	Unlikely

Houston Pilots Visibility Chart (miles)



Forecast Confidence



Visibility	Fri 2 pm	Fri 3 pm	Fri 4 pm	Fri 5 pm	Fri 6 pm	Fri 7 pm	Fri 8 pm	Fri 9 pm	Fri 10 pm	Fri 11 pm	Sat 12 am	Sat 1 am	Sat 2 am	Sat 3 am	Sat 4 am	Sat 5 am	Sat 6 am	Sat 7 am	Sat 8 am	Sat 9 am	Sat 10 am	Sat 11 am	Sat 12 pm	Sat 1 pm
Houston Pilots N - 610 Bridge	10	10	10	10	10	10	10	10	10	10	10	10	10	10	10	10	10	10	10	10	10	10	10	10
Houston Pilots M - Kinder 1	10	10	10	10	10	10	10	10	10	10	10	10	10	10	10	10	10	10	10	10	10	10	10	10
Houston Pilots L - Greens Bayou	10	10	10	10	10	10	10	10	10	10	10	10	10	10	10	10	10	10	10	10	10	10	10	10
Houston Pilots K - Shell Crude	10	10	10	10	10	10	10	10	10	10	10	10	10	10	10	10	10	10	10	10	10	10	10	10
Houston Pilots J - Lynchburg Ferries	10	10	10	10	10	10	10	10	10	10	10	10	10	10	10	10	10	10	10	10	10	10	10	10
Houston Pilots I - Exxon 3	10	10	10	10	10	10	10	10	10	10	10	10	10	10	10	10	10	10	10	10	10	10	10	10
Houston Pilots H - Morgans Point	10	10	10	10	10	10	10	10	10	10	10	10	10	10	10	10	10	10	10	10	10	10	10	10
Houston Pilots G - 75/76	10	10	10	10	10	10	10	10	10	10	10	10	10	10	10	10	10	10	10	10	10	10	10	10
Houston Pilots F - 63/64	10	10	10	10	10	10	10	10	10	10	10	10	10	10	10	10	10	10	10	10	10	10	10	10
Houston Pilots E - 51/52	10	10	10	10	10	10	10	10	10	10	10	10	10	10	10	10	10	10	10	10	10	10	10	10
Houston Pilots D - 37/38	10	10	10	10	10	10	10	10	10	10	10	10	10	10	10	10	10	10	10	10	10	10	10	10
Houston Pilots C - 25/26	10	10	10	10	10	10	10	10	10	10	10	10	10	10	10	10	10	10	10	10	10	10	10	10
Houston Pilots B - 11/12	10	10	10	10	10	10	10	10	10	10	10	10	10	10	10	10	10	10	10	10	10	10	10	10
Houston Pilots A - 1 & 2 Bravo	10	10	10	10	10	10	10	10	10	10	10	9	10	10	10	10	10	10	10	10	10	10	10	10

NOTE: This is automated data that may/may not agree with the official BAM thinking that's found on the daily slides or special visibility report slides. This data should be used as a guide only

Houston Pilots Wind Chart



Sustained wind 10 Knots

Gusts 15 Knots

Wind from the SE

Example

10

15

↙

Wind	Fri 2 pm	Fri 3 pm	Fri 4 pm	Fri 5 pm	Fri 6 pm	Fri 7 pm	Fri 8 pm	Fri 9 pm	Fri 10 pm	Fri 11 pm	Sat 12 am	Sat 1 am	Sat 2 am	Sat 3 am	Sat 4 am	Sat 5 am	Sat 6 am	Sat 7 am	Sat 8 am	Sat 9 am	Sat 10 am	Sat 11 am	Sat 12 pm	Sat 1 pm
Houston Pilots N - 610 Bridge	9 20 ↙	9 20 ↙	8 18 ↙	8 17 ↙	8 15 ↙	7 13 ↙	6 13 ↙	6 13 ↙	6 13 ↙	6 13 ↙	6 13 ↙	7 14 ↙	7 14 ↙	7 14 ↙	7 14 ↙	7 14 ↙	8 15 ↙	8 15 ↙	8 15 ↙	8 15 ↙	8 15 ↙	8 15 ↙	8 15 ↙	8 15 ↙
Houston Pilots M - Kinder 1	10 20 ↙	9 20 ↙	9 18 ↙	8 17 ↙	8 15 ↙	7 13 ↙	6 13 ↙	6 13 ↙	6 13 ↙	7 13 ↙	7 13 ↙	7 14 ↙	7 14 ↙	7 14 ↙	7 14 ↙	7 15 ↙	8 15 ↙	8 15 ↙	8 15 ↙	8 15 ↙	8 15 ↙	8 15 ↙	8 15 ↙	8 15 ↙
Houston Pilots L - Greens Bayou	10 20 ↙	9 20 ↙	9 18 ↙	8 17 ↙	8 15 ↙	7 13 ↙	6 13 ↙	6 13 ↙	6 13 ↙	7 14 ↙	7 14 ↙	7 14 ↙	7 14 ↙	7 14 ↙	7 14 ↙	7 15 ↙	8 15 ↙	8 15 ↙	8 16 ↙	8 15 ↙	8 15 ↙	8 15 ↙	8 15 ↙	8 15 ↙
Houston Pilots K - Shell Crude	10 20 ↙	10 20 ↙	9 18 ↙	9 17 ↙	8 15 ↙	7 13 ↙	7 14 ↙	7 14 ↙	7 14 ↙	7 14 ↙	7 14 ↙	7 14 ↙	7 14 ↙	7 14 ↙	7 15 ↙	8 15 ↙	8 15 ↙	8 16 ↙	8 16 ↙	8 16 ↙	8 15 ↙	8 15 ↙	8 15 ↙	8 15 ↙
Houston Pilots J - Lynchburg Ferries	10 20 ↙	10 18 ↙	9 17 ↙	8 16 ↙	8 15 ↙	7 13 ↙	6 13 ↙	6 13 ↙	6 13 ↙	6 13 ↙	6 13 ↙	6 13 ↙	6 13 ↙	6 14 ↙	7 14 ↙	7 14 ↙	7 15 ↙	7 15 ↙	7 15 ↙	8 15 ↙	8 15 ↙	8 15 ↙	8 15 ↙	8 15 ↙
Houston Pilots I - Exxon 3	13 20 ↙	12 20 ↙	12 20 ↙	12 18 ↙	10 17 ↙	10 15 ↙	10 15 ↙	10 16 ↙	10 16 ↙	10 16 ↙	10 16 ↙	10 16 ↙	12 16 ↙	12 16 ↙	12 16 ↙	12 16 ↙	12 17 ↙	12 17 ↙	12 17 ↙	10 17 ↙	10 16 ↙	10 16 ↙	10 16 ↙	9 16 ↙
Houston Pilots H - Morgans Point	13 20 ↙	13 21 ↙	13 20 ↙	12 18 ↙	12 17 ↙	10 16 ↙	10 16 ↙	12 17 ↙	12 17 ↙	12 17 ↙	12 16 ↙	12 16 ↙	12 16 ↙	12 17 ↙	12 17 ↙	13 17 ↙	13 17 ↙	12 17 ↙	12 17 ↙	10 17 ↙	10 17 ↙	10 17 ↙	10 16 ↙	10 16 ↙
Houston Pilots G - 75/76	14 22 ↙	13 22 ↙	13 22 ↙	13 21 ↙	13 20 ↙	13 18 ↙	13 18 ↙	14 18 ↙	14 18 ↙	14 18 ↙	14 18 ↙	14 18 ↙	15 18 ↙	15 18 ↙	15 20 ↙	15 20 ↙	15 20 ↙	15 20 ↙	15 20 ↙	14 20 ↙	13 20 ↙	13 20 ↙	12 18 ↙	10 18 ↙
Houston Pilots F - 63/64	14 22 ↙	14 22 ↙	13 22 ↙	14 22 ↙	14 21 ↙	13 18 ↙	13 18 ↙	14 20 ↙	15 20 ↙	15 20 ↙	15 20 ↙	14 18 ↙	15 20 ↙	15 20 ↙	15 20 ↙	15 21 ↙	15 21 ↙	15 21 ↙	15 21 ↙	15 21 ↙	14 21 ↙	13 20 ↙	12 20 ↙	10 18 ↙
Houston Pilots E - 51/52	15 23 ↙	15 22 ↙	14 22 ↙	15 22 ↙	14 21 ↙	14 20 ↙	14 20 ↙	15 20 ↙	15 20 ↙	15 20 ↙	15 20 ↙	14 18 ↙	15 20 ↙	15 20 ↙	15 20 ↙	15 21 ↙	15 21 ↙	15 21 ↙	15 21 ↙	15 21 ↙	15 21 ↙	14 21 ↙	13 21 ↙	13 20 ↙
Houston Pilots D - 37/38	15 23 ↙	15 23 ↙	15 23 ↙	15 22 ↙	15 22 ↙	14 20 ↙	14 20 ↙	15 20 ↙	15 21 ↙	15 20 ↙	15 20 ↙	14 18 ↙	15 20 ↙	15 20 ↙	15 20 ↙	15 21 ↙	15 21 ↙	15 21 ↙	15 21 ↙	15 21 ↙	15 21 ↙	14 21 ↙	13 21 ↙	13 21 ↙
Houston Pilots C - 25/26	15 24 ↙	15 23 ↙	15 23 ↙	15 22 ↙	15 22 ↙	14 20 ↙	14 21 ↙	15 21 ↙	15 21 ↙	15 21 ↙	14 20 ↙	14 18 ↙	14 20 ↙	15 20 ↙	15 21 ↙	15 21 ↙	15 21 ↙	15 21 ↙	15 21 ↙	15 21 ↙	15 21 ↙	14 21 ↙	14 21 ↙	14 21 ↙
Houston Pilots B - 11/12	15 24 ↙	15 23 ↙	15 23 ↙	15 22 ↙	14 22 ↙	13 20 ↙	14 21 ↙	14 21 ↙	14 21 ↙	13 21 ↙	13 20 ↙	13 18 ↙	13 20 ↙	13 20 ↙	13 20 ↙	14 21 ↙	14 21 ↙	14 21 ↙	15 21 ↙	15 21 ↙	15 21 ↙	14 21 ↙	14 21 ↙	14 21 ↙
Houston Pilots A - 1 & 2 Bravo	17 26 ↙	17 25 ↙	17 24 ↙	17 24 ↙	16 23 ↙	16 23 ↙	16 23 ↙	17 23 ↙	16 23 ↙	16 23 ↙	15 22 ↙	15 21 ↙	15 21 ↙	15 22 ↙	15 22 ↙	16 22 ↙	16 23 ↙	16 23 ↙	16 23 ↙	16 23 ↙	16 23 ↙	16 23 ↙	15 23 ↙	15 23 ↙

NOTE: This is automated data that may/may not agree with the official BAM thinking that's found on the daily slides. This data should be used as a guide only.

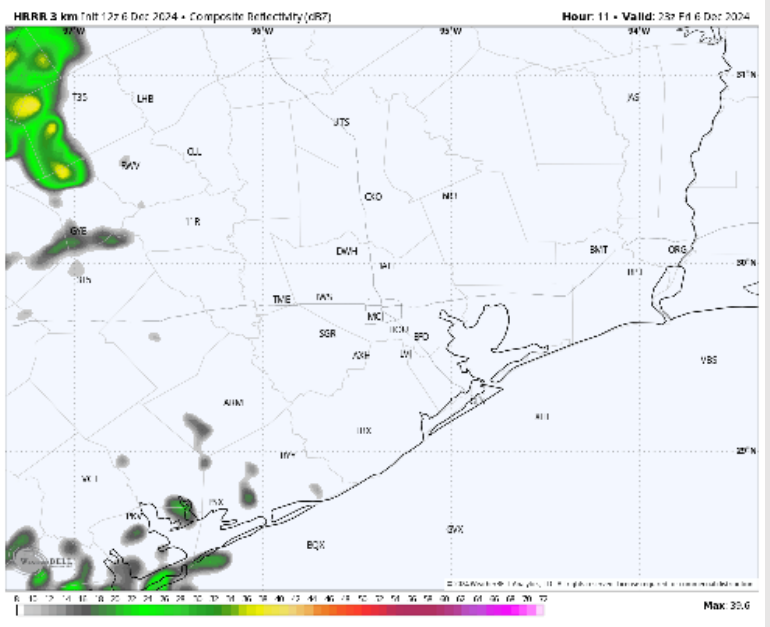
Houston Pilots: FRI. 12/6/2024



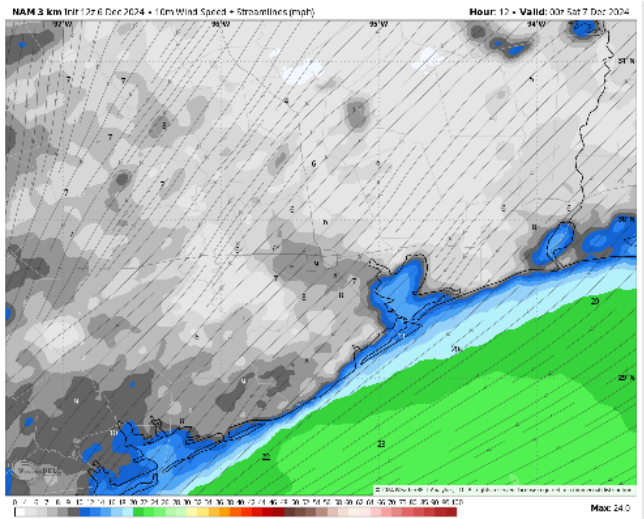
Forecast Discussion

- Precip:** Favoring dry conditions throughout the rest of the day.
- Wind:** Winds will be out of the NE for the rest of the day. **N of Morgan's Point:** Winds will be at 6 – 11 kts through 5 PM before decreasing to 4 – 8 kts for the rest of the day. **S of Morgan's Point:** Winds will be at 12 – 16 kts throughout the rest of the day. **Wind gusts of 15 – 25 kts will be in play for all Stations for the rest of the day.**
- Low Temps:** **N of Morgan's Point:** Upper 40s F. **S of Morgan's Point:** Low 50s F.
- Visibility:** No visibility concerns for today.

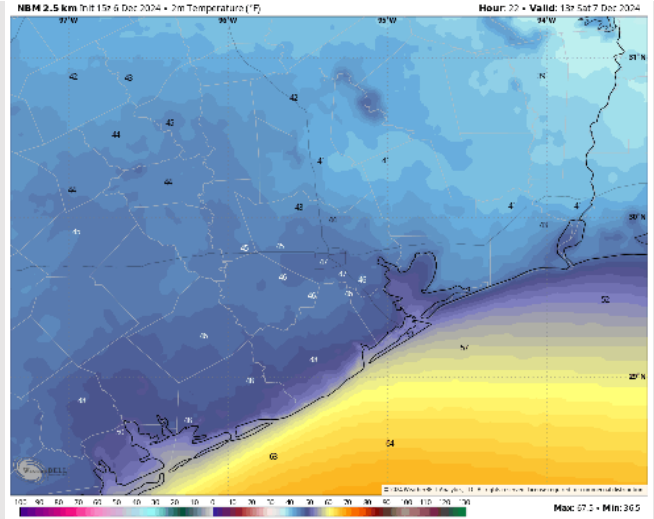
Precip Image: 5 PM CT



Wind Speed
6 PM CT



Low Temps
SAT AM



Houston Pilots: SAT. 12/7/2024



Forecast Discussion

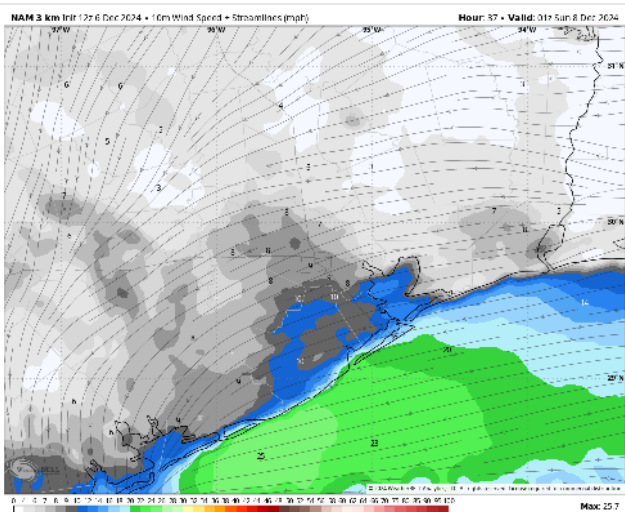
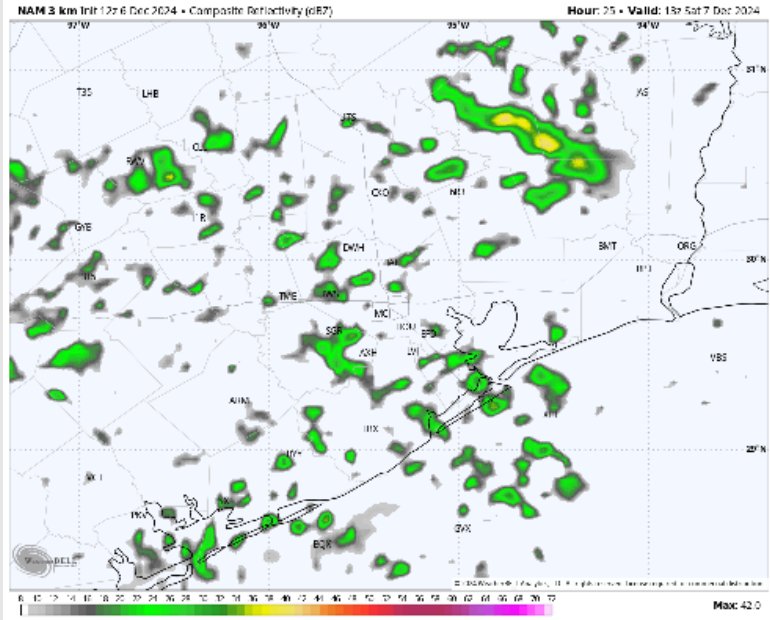
Precip: Isolated (20%) showers will be possible through 7 AM, then Scattered (40-50%) coverage will be possible for all stations through 5 PM, then becoming widespread (60-70%) through the evening hours.

Wind: Winds will be out of the ENE throughout Saturday. **N of Morgan's Point:** Winds will be at 3 - 9 kts throughout the day on Saturday. **S of Morgan's Point:** Winds will be at 10 - 16 kts throughout the day on Saturday. **Wind gusts of 15 - 25 kts will be in play for Stations S of Morgan's Point through the day.**

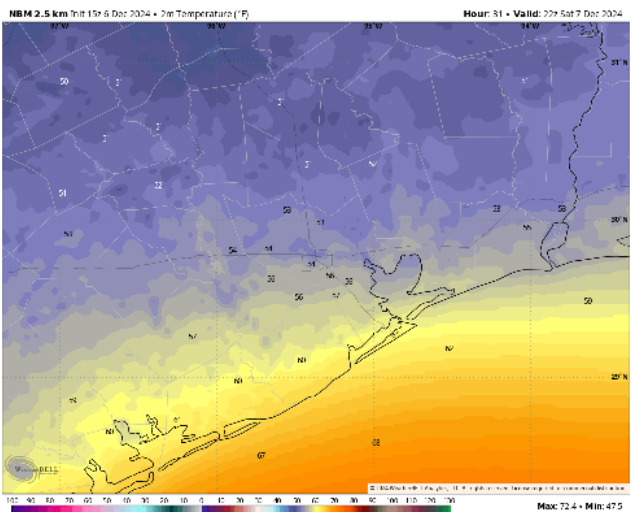
High Temps: **N of Morgan's Point:** Mid 50s F. **S of Morgan's Point:** Low 60s F.

Visibility: No fog concerns but heavy showers may briefly reduce visibility.

Precip Image: 7 AM CT



Wind Speed:
7 PM CT



High Temps
Saturday

Houston Pilots: SUN. 12/8/2024



Forecast Discussion

Precip: Isolated-to-scattered showers will be possible throughout the day on Sunday. Favoring activity to dry out by 5 PM

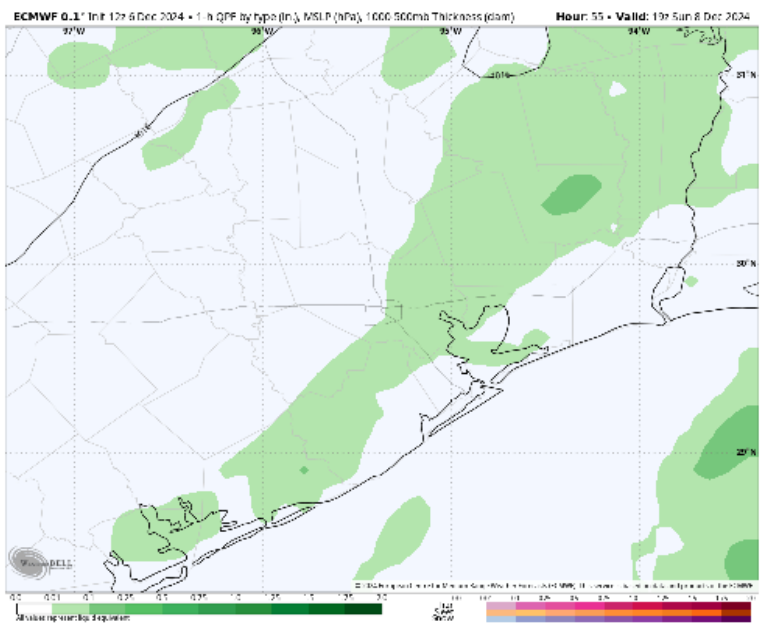
Wind: Winds will be out of the E through 9 AM before shifting out of the S through 2 PM, before shifting to be out of the SW for the rest of the day.

N of Morgan's Point: Winds will be at 2 – 7 kts throughout Sunday. **S of Morgan's Point:** Winds will be at 9 – 14 kts throughout the day. **Wind gusts of 20 – 25 kts in play for stations S of Morgan's Point throughout the day.**

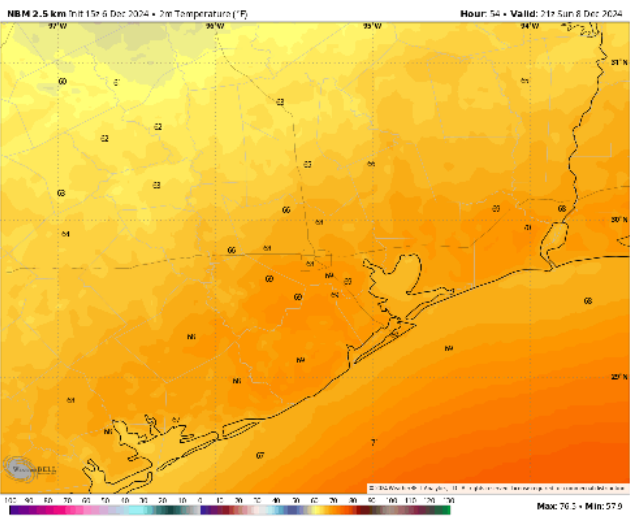
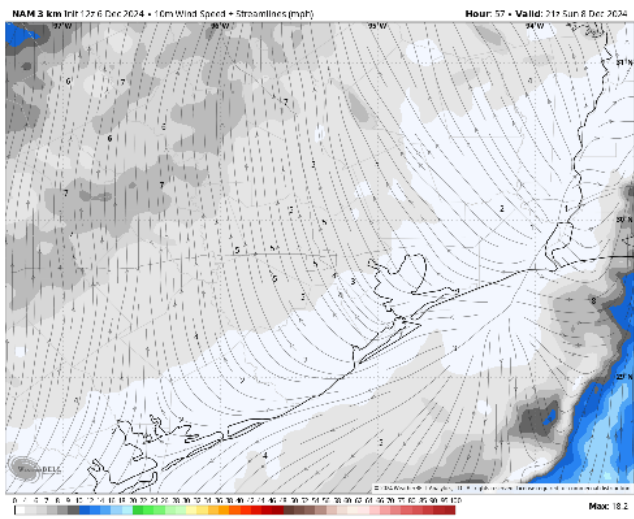
High Temps: **N of Morgan's Point:** Upper 60s F. **S of Morgan's Point:** Upper 60s F.

Visibility: Monitoring a low-end risk for sea fog between isolated rain showers Sunday AM. Confidence remains very low.

Precip Image: 1 PM CT



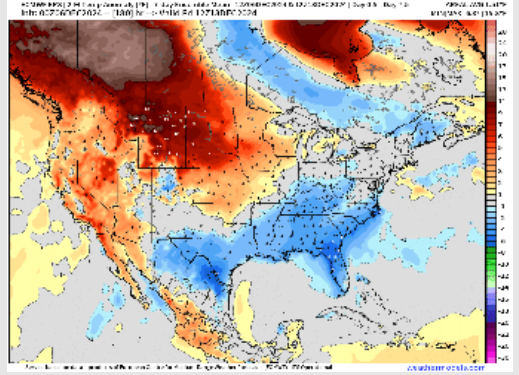
Wind Speed:
3 PM CT



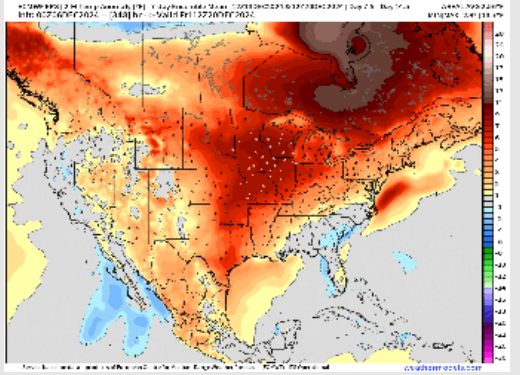
High Temps
Sunday

Houston Pilots: 12/6/24

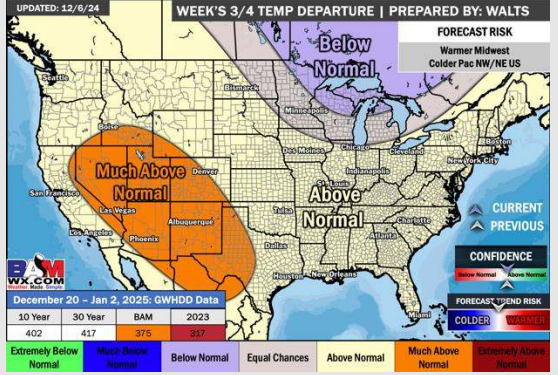
Next 7 Day Temperature Departure



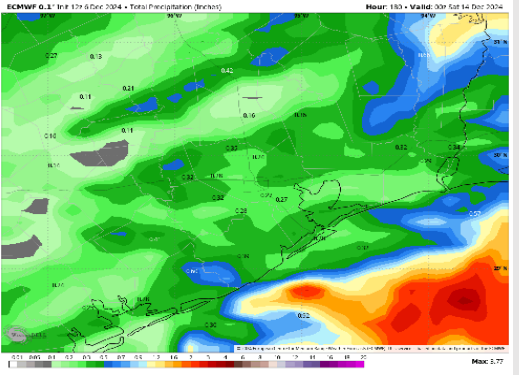
8-14 Day Temperature Departure



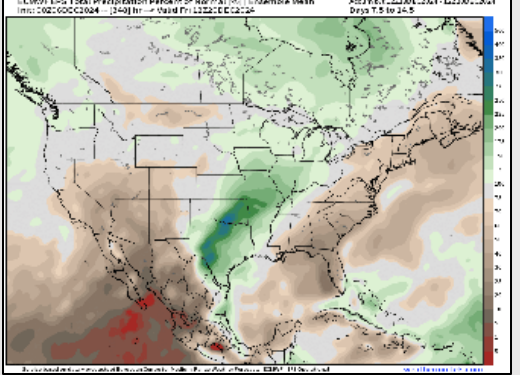
15-30 Day Temperature Departure



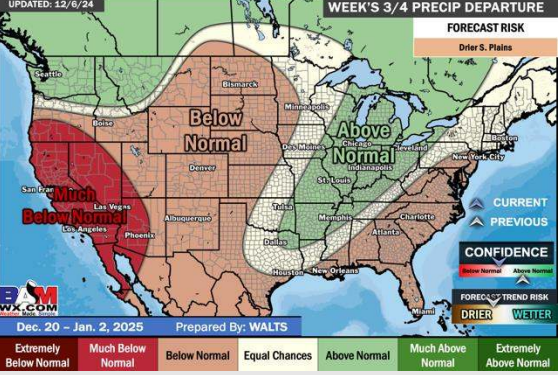
Next 7 Day Total Precipitation



8-14 Day % of Average Precip.



15-30 Day % of Average Precip.



- Temps are expected to be below normal for the week 1 timeframe. Above normal rainfall is expected through the week 1 timeframe with several rounds of rain in the picture.
- Above-normal temperatures are favored for week 2. Favoring above normal rainfall week 2.
- Above-normal temperatures and below-normal precipitation chances are expected for the weeks 3/4 timeframe.