

Houston Pilots Forecast Package



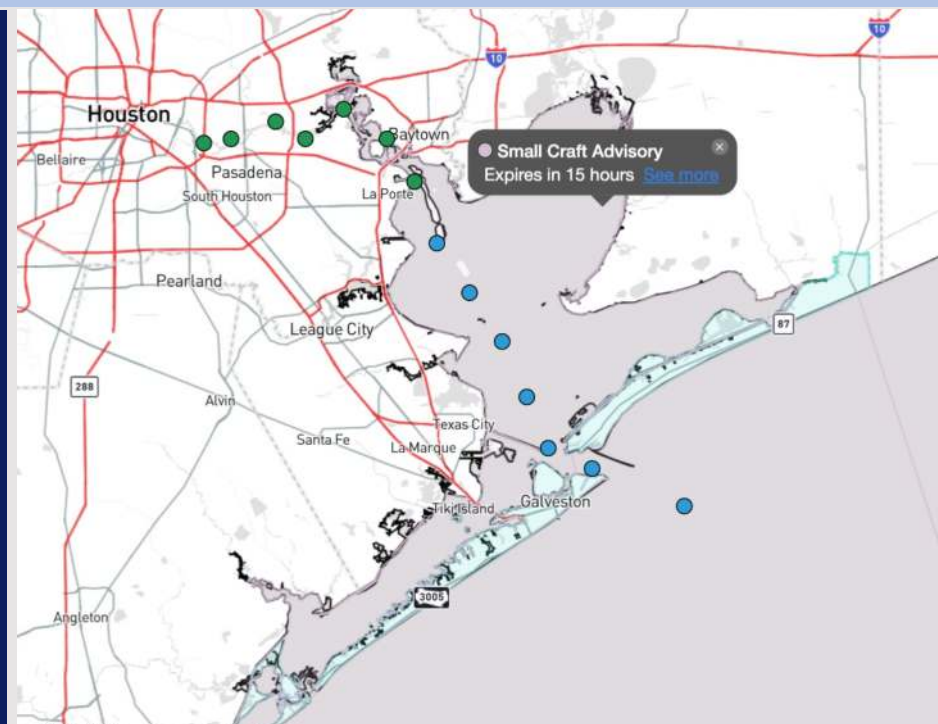
Updated: 12:30 PM CT

Friday, December 6, 2024

Forecaster: Xander Lowry

Weather Headlines

- Dry conditions are favored through the end of the day before rain showers return on Saturday.
- Wind gusts of 20 - 25 kts will continue into the weekend.
- Monitoring a low-end risk of Sea Fog early SUN AM between isolated showers.

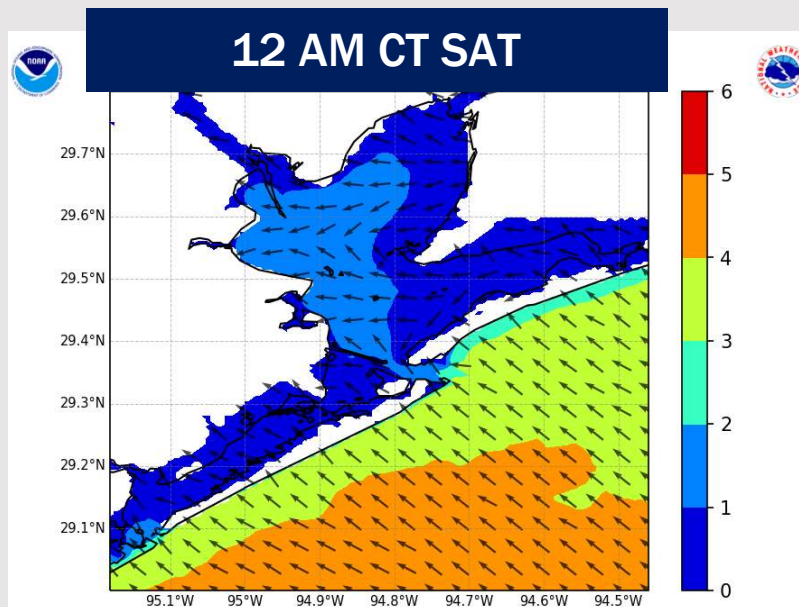
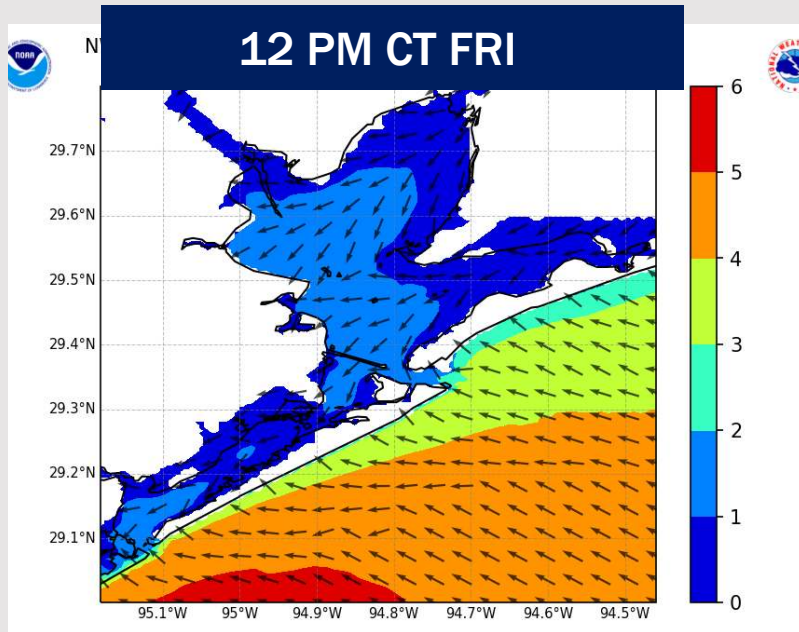


Current Radar: 12:25 PM CT



As always, please do not hesitate to reach out to us with any forecast questions via the chat option on Clarity or our on-call number, **(317)-560-8122** press **1** for forecast questions.

Wave Height Forecast Update



Wave Heights are favored to hold steady at 4 – 5 feet throughout most of the day today.

Beginning at 9 PM this evening, wave heights will slowly begin to decrease, reaching 3' – 4' by 3 AM SAT. Favoring wave heights to remain at 3' - 4' throughout the weekend.

Houston Pilots Extended Range Visibility Report



Monday 12/9/24

Fog not favored for MON.



Tuesday 12/10/24

Fog not favored for TUE.



Wednesday 12/11/24

Fog not favored for WED.



Chance for Fog

Monday AM	Unlikely
Monday PM	Unlikely
Tuesday AM	Unlikely
Tuesday PM	Unlikely
Wednesday AM	Unlikely
Wednesday PM	Unlikely

Houston Pilots Visibility Chart (miles)



Forecast Confidence



Visibility	Fri 1 am	Fri 2 am	Fri 3 am	Fri 4 am	Fri 5 am	Fri 6 am	Fri 7 am	Fri 8 am	Fri 9 am	Fri 10 am	Fri 11 am	Fri 12 pm	Fri 1 pm	Fri 2 pm	Fri 3 pm	Fri 4 pm	Fri 5 pm	Fri 6 pm	Fri 7 pm	Fri 8 pm	Fri 9 pm	Fri 10 pm	Fri 11 pm	Sat 12 am
Houston Pilots N - 610 Bridge	10	10	10	10	10	10	10	10	10	10	10	10	10	10	10	10	10	10	10	10	10	10	10	10
Houston Pilots M - Kinder 1	10	10	10	10	10	10	10	10	10	10	10	10	10	10	10	10	10	10	10	10	10	10	10	10
Houston Pilots L - Greens Bayou	10	10	10	10	10	10	10	10	10	10	10	10	10	10	10	10	10	10	10	10	10	10	10	10
Houston Pilots K - Shell Crude	10	10	10	10	10	10	10	10	10	10	10	10	10	10	10	10	10	10	10	10	10	10	10	10
Houston Pilots J - Lynchburg Ferries	10	10	10	10	10	10	10	10	10	10	10	10	10	10	10	10	10	10	10	10	10	10	10	10
Houston Pilots I - Exxon 3	10	10	10	10	10	10	10	10	10	10	10	10	10	10	10	10	10	10	10	10	10	10	10	10
Houston Pilots H - Morgans Point	10	10	10	10	10	10	10	10	10	10	10	10	10	10	10	10	10	10	10	10	10	10	10	10
Houston Pilots G - 75/76	10	10	10	10	10	10	10	10	10	10	10	10	10	10	10	10	10	10	10	10	10	10	10	10
Houston Pilots F - 63/64	10	10	10	10	10	10	10	10	10	10	10	10	10	10	10	10	10	10	10	10	10	10	10	10
Houston Pilots E - 51/52	10	10	10	10	10	10	10	10	10	10	10	10	10	10	10	10	10	10	10	10	10	10	10	10
Houston Pilots D - 37/38	10	10	10	10	10	10	10	10	10	10	10	10	10	10	10	10	10	10	10	10	10	10	10	10
Houston Pilots C - 25/26	10	10	10	10	10	10	10	10	10	10	10	10	10	10	10	10	10	10	10	10	10	10	10	10
Houston Pilots B - 11/12	10	10	10	10	10	10	10	10	10	10	10	10	10	10	10	10	10	10	10	10	10	10	10	10
Houston Pilots A - 1 & 2 Bravo	10	10	10	10	10	10	10	10	10	10	10	10	10	10	10	10	10	10	10	10	10	10	10	10

NOTE: This is automated data that may/may not agree with the official BAM thinking that's found on the daily slides or special visibility report slides. This data should be used as a guide only

Houston Pilots Wind Chart



→ Sustained wind 10 Knots
 → Gusts 15 Knots
 → Wind from the SE

Example

10
 15
 ↙

Wind	Fri 1 am	Fri 2 am	Fri 3 am	Fri 4 am	Fri 5 am	Fri 6 am	Fri 7 am	Fri 8 am	Fri 9 am	Fri 10 am	Fri 11 am	Fri 12 pm	Fri 1 pm	Fri 2 pm	Fri 3 pm	Fri 4 pm	Fri 5 pm	Fri 6 pm	Fri 7 pm	Fri 8 pm	Fri 9 pm	Fri 10 pm	Fri 11 pm	Sat 12 am
Houston Pilots N - 610 Bridge	10 20 ↙	10 20 ↙	10 18 ↙	10 18 ↙	10 18 ↙	10 18 ↙	10 18 ↙	10 20 ↙	10 20 ↙	10 20 ↙	10 21 ↙	10 20 ↙	10 20 ↙	9 20 ↙	9 20 ↙	8 18 ↙	8 17 ↙	8 15 ↙	7 13 ↙	6 13 ↙	6 13 ↙	7 13 ↙	7 14 ↙	7 14 ↙
Houston Pilots M - Kinder 1	10 20 ↙	10 20 ↙	10 20 ↙	10 18 ↙	10 18 ↙	10 18 ↙	10 18 ↙	10 20 ↙	10 20 ↙	10 20 ↙	10 21 ↙	10 20 ↙	10 20 ↙	10 20 ↙	9 20 ↙	9 18 ↙	8 17 ↙	8 15 ↙	7 13 ↙	6 13 ↙	6 13 ↙	7 13 ↙	7 14 ↙	7 14 ↙
Houston Pilots L - Greens Bayou	10 20 ↙	10 20 ↙	10 20 ↙	10 20 ↙	10 20 ↙	10 20 ↙	10 18 ↙	10 20 ↙	10 20 ↙	10 20 ↙	10 21 ↙	10 20 ↙	10 20 ↙	10 20 ↙	9 20 ↙	9 18 ↙	8 17 ↙	8 15 ↙	7 13 ↙	6 13 ↙	6 13 ↙	7 14 ↙	7 14 ↙	7 14 ↙
Houston Pilots K - Shell Crude	10 20 ↙	10 20 ↙	10 20 ↙	10 20 ↙	10 20 ↙	10 20 ↙	10 20 ↙	10 21 ↙	10 21 ↙	10 20 ↙	10 21 ↙	10 20 ↙	10 20 ↙	10 20 ↙	10 20 ↙	9 18 ↙	9 17 ↙	8 15 ↙	7 14 ↙	7 14 ↙	7 14 ↙	7 14 ↙	7 14 ↙	7 15 ↙
Houston Pilots J - Lynchburg Ferries	9 20 ↙	9 20 ↙	9 20 ↙	9 20 ↙	9 20 ↙	9 20 ↙	9 18 ↙	10 20 ↙	10 20 ↙	10 20 ↙	10 20 ↙	10 20 ↙	10 20 ↙	10 20 ↙	10 18 ↙	9 18 ↙	8 17 ↙	8 15 ↙	7 13 ↙	6 13 ↙	6 13 ↙	6 13 ↙	6 14 ↙	6 14 ↙
Houston Pilots I - Exxon 3	15 21 ↙	16 22 ↙	16 22 ↙	15 22 ↙	15 22 ↙	15 22 ↙	15 21 ↙	15 22 ↙	14 21 ↙	14 21 ↙	13 21 ↙	13 20 ↙	13 20 ↙	13 20 ↙	12 20 ↙	12 20 ↙	12 17 ↙	10 17 ↙	10 16 ↙	10 16 ↙	10 16 ↙	10 16 ↙	12 16 ↙	12 15 ↙
Houston Pilots H - Morgans Point	16 22 ↙	16 23 ↙	16 23 ↙	16 22 ↙	16 22 ↙	15 22 ↙	15 22 ↙	15 22 ↙	15 22 ↙	14 21 ↙	14 22 ↙	13 21 ↙	13 20 ↙	13 20 ↙	13 21 ↙	13 20 ↙	12 18 ↙	12 17 ↙	10 16 ↙	10 16 ↙	12 17 ↙	12 17 ↙	13 17 ↙	13 16 ↙
Houston Pilots G - 75/76	18 25 ↙	20 26 ↙	20 26 ↙	20 26 ↙	20 26 ↙	20 26 ↙	18 26 ↙	18 26 ↙	17 25 ↙	17 24 ↙	16 24 ↙	15 23 ↙	14 23 ↙	14 22 ↙	13 22 ↙	13 21 ↙	14 21 ↙	13 20 ↙	13 18 ↙	13 18 ↙	14 18 ↙	14 18 ↙	15 20 ↙	15 20 ↙
Houston Pilots F - 63/64	20 26 ↙	20 26 ↙	21 26 ↙	20 26 ↙	21 26 ↙	21 26 ↙	20 26 ↙	20 26 ↙	20 26 ↙	17 25 ↙	17 25 ↙	15 24 ↙	14 23 ↙	14 22 ↙	14 22 ↙	14 21 ↙	14 21 ↙	13 21 ↙	13 18 ↙	14 20 ↙	14 20 ↙	15 20 ↙	15 20 ↙	15 20 ↙
Houston Pilots E - 51/52	20 28 ↙	21 28 ↙	21 28 ↙	21 28 ↙	21 28 ↙	21 28 ↙	20 26 ↙	20 28 ↙	20 26 ↙	17 26 ↙	17 26 ↙	15 25 ↙	15 24 ↙	15 23 ↙	15 22 ↙	15 22 ↙	15 22 ↙	15 21 ↙	14 20 ↙	15 20 ↙	15 20 ↙	15 20 ↙	15 20 ↙	15 20 ↙
Houston Pilots D - 37/38	20 28 ↙	21 28 ↙	21 29 ↙	21 28 ↙	22 29 ↙	21 29 ↙	20 28 ↙	20 28 ↙	20 28 ↙	18 26 ↙	17 26 ↙	17 25 ↙	15 24 ↙	15 24 ↙	15 23 ↙	15 22 ↙	15 22 ↙	15 22 ↙	15 21 ↙	15 21 ↙	15 21 ↙	15 21 ↙	15 21 ↙	15 21 ↙
Houston Pilots C - 25/26	20 29 ↙	21 29 ↙	21 29 ↙	21 29 ↙	21 29 ↙	21 29 ↙	20 28 ↙	20 29 ↙	20 28 ↙	18 26 ↙	17 26 ↙	17 25 ↙	16 24 ↙	16 24 ↙	16 23 ↙	15 23 ↙	15 23 ↙	15 22 ↙	15 21 ↙	15 21 ↙	15 21 ↙	15 21 ↙	15 21 ↙	15 21 ↙
Houston Pilots B - 11/12	18 29 ↙	20 29 ↙	20 29 ↙	20 29 ↙	20 29 ↙	20 29 ↙	20 28 ↙	20 28 ↙	18 28 ↙	17 26 ↙	17 26 ↙	17 25 ↙	16 24 ↙	16 24 ↙	15 23 ↙	15 23 ↙	15 22 ↙	14 22 ↙	14 21 ↙	14 21 ↙	14 21 ↙	14 21 ↙	14 21 ↙	13 21 ↙
Houston Pilots A - 1 & 2 Bravo	22 30 ↙	23 32 ↙	23 32 ↙	22 31 ↙	22 31 ↙	22 31 ↙	22 30 ↙	22 30 ↙	22 30 ↙	20 29 ↙	20 28 ↙	18 28 ↙	17 25 ↙	17 26 ↙	17 25 ↙	17 25 ↙	17 25 ↙	17 24 ↙	16 23 ↙	17 24 ↙	17 23 ↙	16 23 ↙	16 23 ↙	16 22 ↙

NOTE: This is automated data that may/may not agree with the official BAM thinking that's found on the daily slides. This data should be used as a guide only.

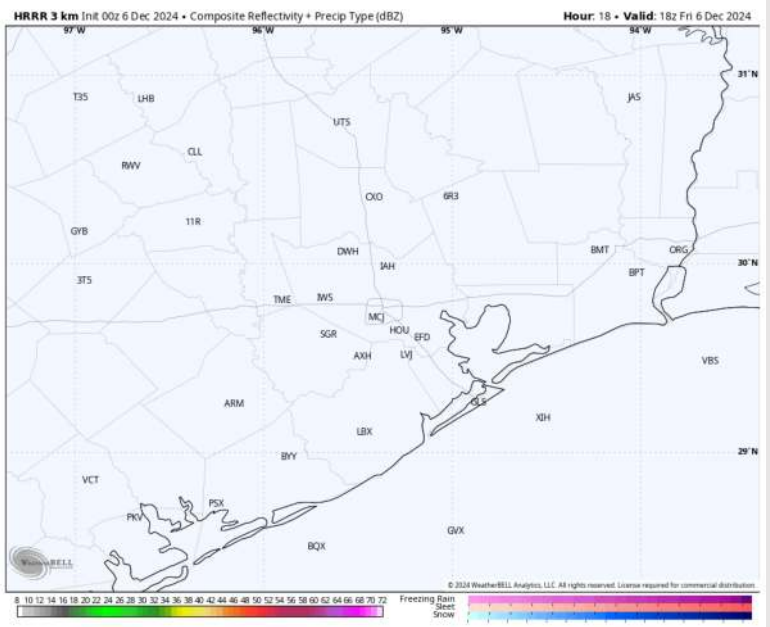
Houston Pilots: FRI. 12/6/2024



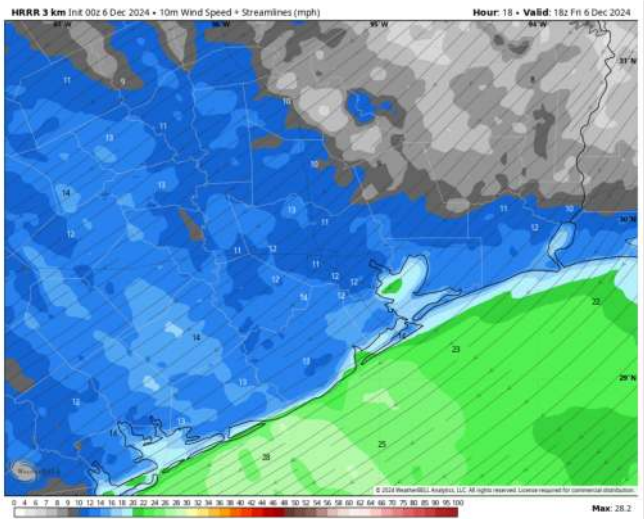
Forecast Discussion

- Precip:** Favoring dry conditions throughout the day today.
- Wind:** Winds will be out of the NE for all of today. **N of Morgan's Point:** Winds will be at 6 – 11 kts through 5 PM before decreasing to 3 – 8 kts for the rest of the day. **S of Morgan's Point:** Winds will be at 16 – 21 kts throughout the day. **Wind gusts of 20 – 25 kts in play for all Stations from 12 AM to 12 PM.**
- High Temps:** **N of Morgan's Point:** Mid 50s F. **S of Morgan's Point:** Mid to Upper 50s F.
- Visibility:** No visibility concerns for today.

Precip Image: 12 PM CT

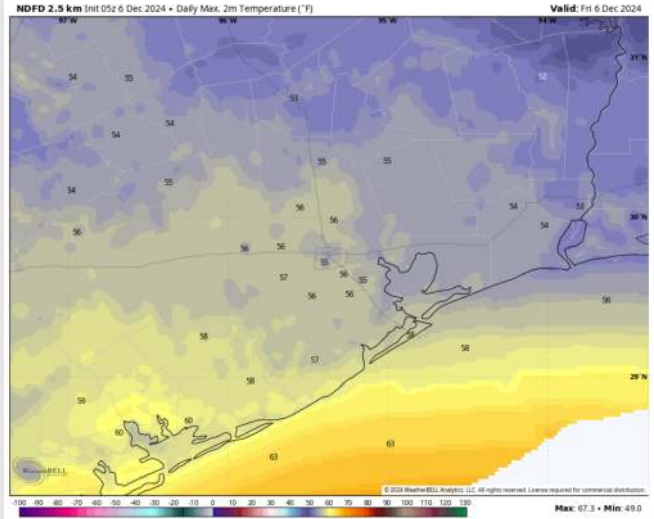


Wind Speed 12 PM CT



Wind Speed 12 PM CT

High Temps Today



High Temps Today

Forecast Discussion

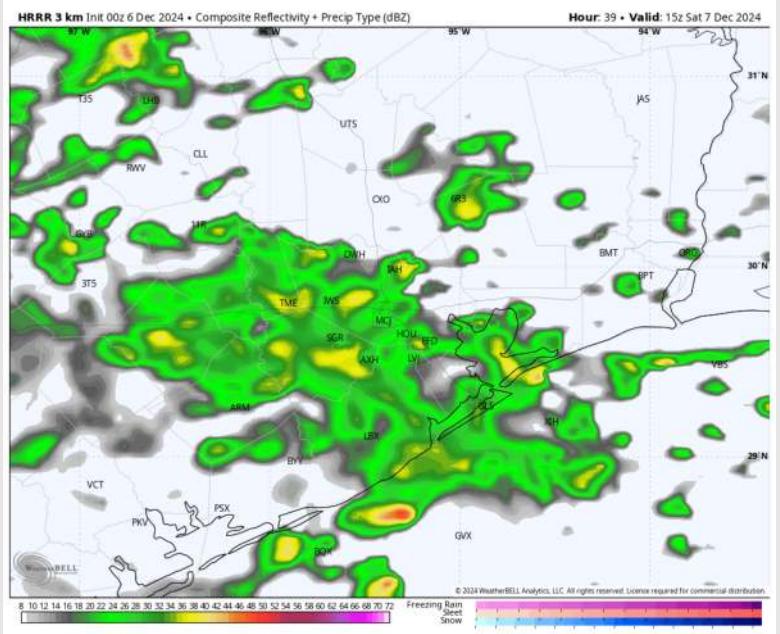
Precip: Isolated (20%) showers will be possible through 7 AM, then widespread (60-70%) coverage will be possible for all stations from 9 AM to 1 PM. Favoring activity to become more scattered (30-40%) after 1 PM and throughout the rest of Saturday.

Wind: Winds will be out of the ENE throughout Saturday. **N of Morgan's Point:** Winds will be at 3 - 8 kts throughout the day on Saturday. **S of Morgan's Point:** Winds will be at 13 - 18 kts throughout the day on Saturday. **Wind gusts of 20 - 25 kts will be in play for Stations S of Morgan's Point through 7 PM.**

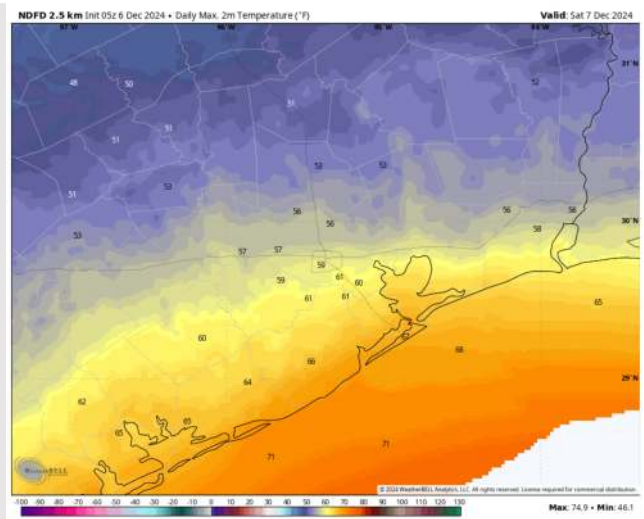
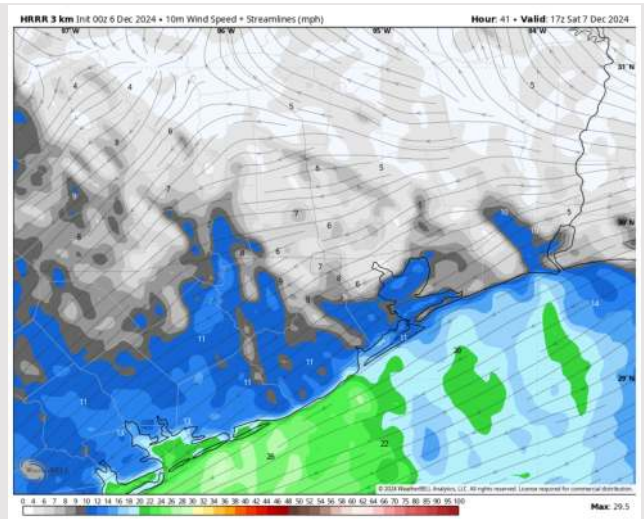
High Temps: **N of Morgan's Point:** Upper 50s F. **S of Morgan's Point:** Upper 60s F.

Visibility: No fog concerns but heavy showers may briefly reduce visibility.

Precip Image: 9 AM CT



Wind Speed:
11 AM CT



High Temps
Saturday

Houston Pilots: SUN. 12/8/2024



Forecast Discussion

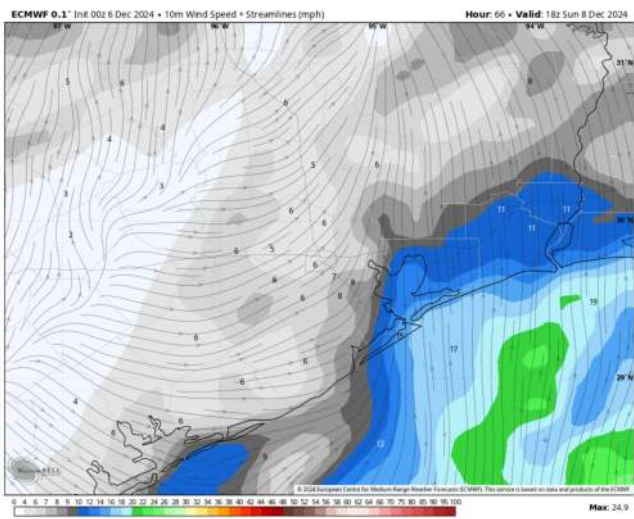
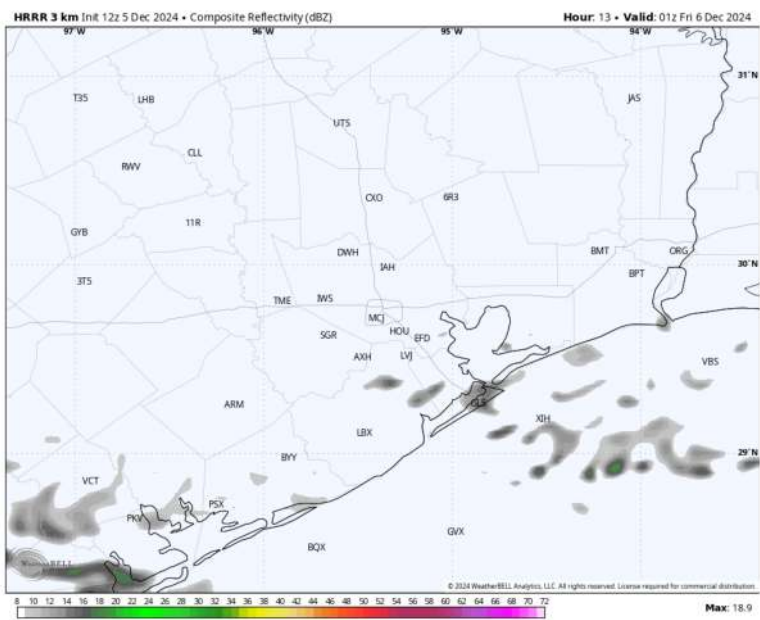
Precip: Isolated-to-scattered showers will be possible throughout the day on Sunday. Favoring activity to dry out by 9 PM.

Wind: Winds will be out of the S/SW through 2 PM, before shifting to be out of the W for the rest of the day. **N of Morgan's Point:** Winds will be at 2 – 7 kts throughout Sunday. **S of Morgan's Point:** Winds will be at 9 – 14 kts throughout the day. **Wind gusts of 20 – 25 kts in play for stations S of Morgan's Point throughout the day.**

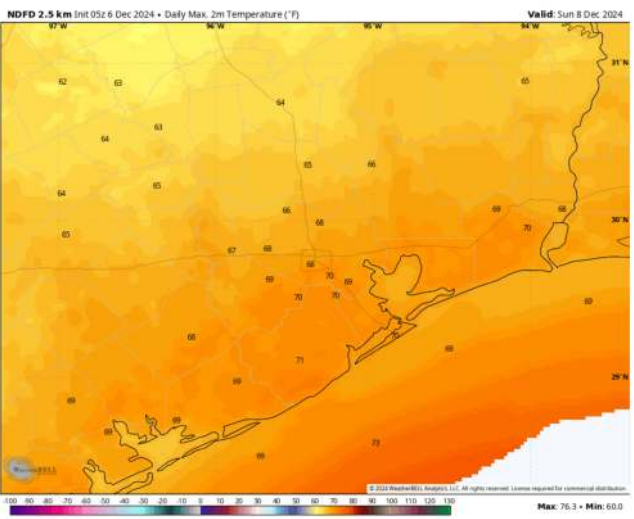
High Temps: **N of Morgan's Point:** Upper 60 /Low 70s F. **S of Morgan's Point:** Upper 60s F.

Visibility: Monitoring a low-end risk for sea fog between isolated rain showers Sunday AM. Confidence remains very low.

Precip Image: 7 PM CT



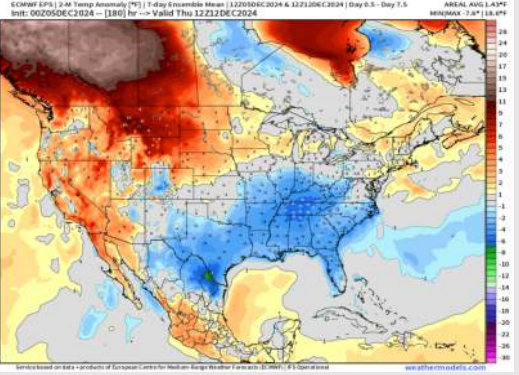
Wind Speed:
12 PM CT



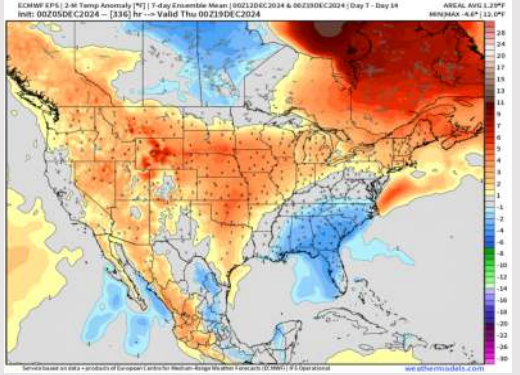
High Temps
Sunday

Houston Pilots: 12/6/24

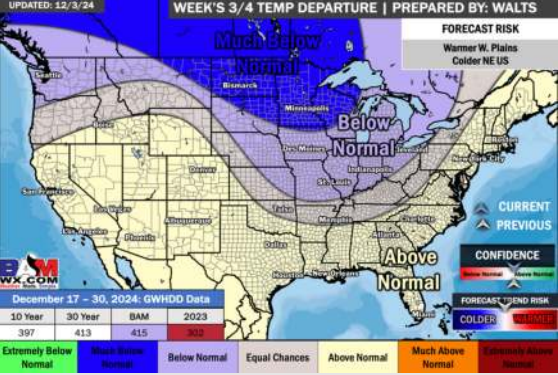
Next 7 Day Temperature Departure



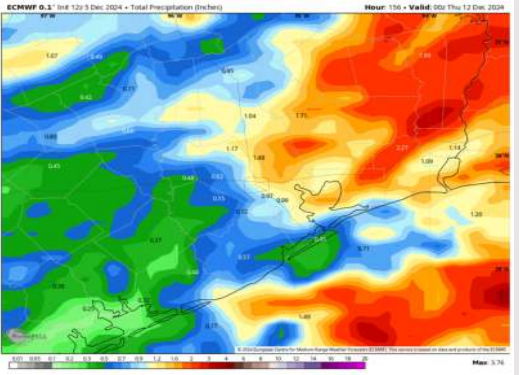
8-14 Day Temperature Departure



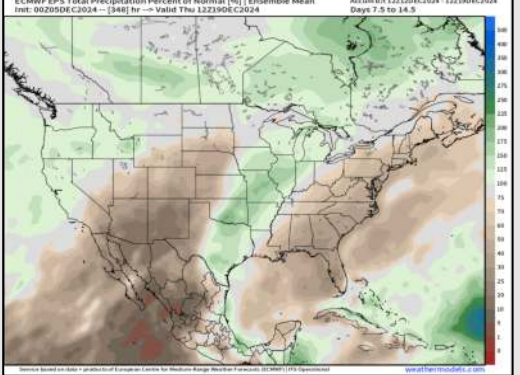
15-30 Day Temperature Departure



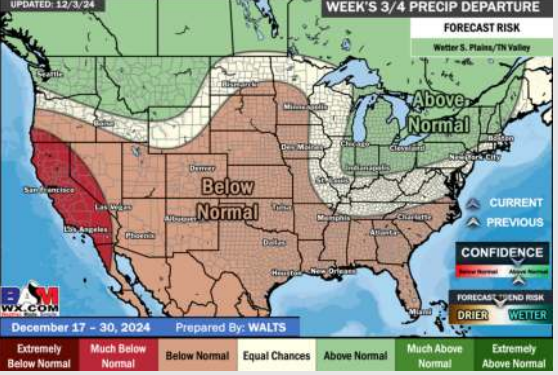
Next 7 Day Total Precipitation



8-14 Day % of Average Precip.



15-30 Day % of Average Precip.



- Temps are expected to be below normal for the week 1 timeframe. Above normal rainfall is expected through the week 1 timeframe with several rounds of rain in the picture.
- Near normal temperatures are favored for week 2. Favoring near normal rainfall week 2.
- Above normal temperatures and below normal precipitation chances are expected for the weeks 3/4 timeframe.