

Houston Pilots Forecast Package



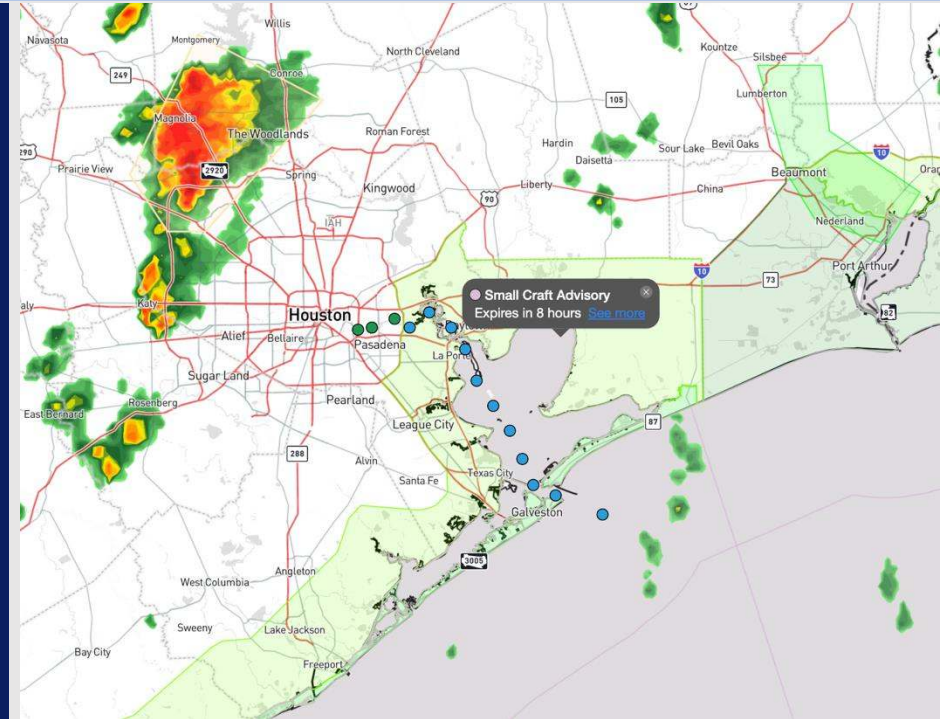
Updated: 2:30 AM CT

Tuesday, November 5, 2024

Forecaster: John Kemper

Weather Headlines

- **Gusty winds of 20+ kts will be in play through early Tuesday AM as a storm line / front approaches the area.**
- **Wave heights of 6' will continue through 11AM TUE. Zulu trigger currently in effect!**
- **Monitoring Tropical Storm Rafael in the Caribbean! See slides below for more info!**
- **Latest Video: [Zulu Port Condition Update](#)**



Current Radar: 2:25 AM CT



As always, please do not hesitate to reach out to us with any forecast questions via the chat option on Clarity or our on-call number, **(317)-560-8122** press **1** for forecast questions.

Houston Pilots Port Trigger Update

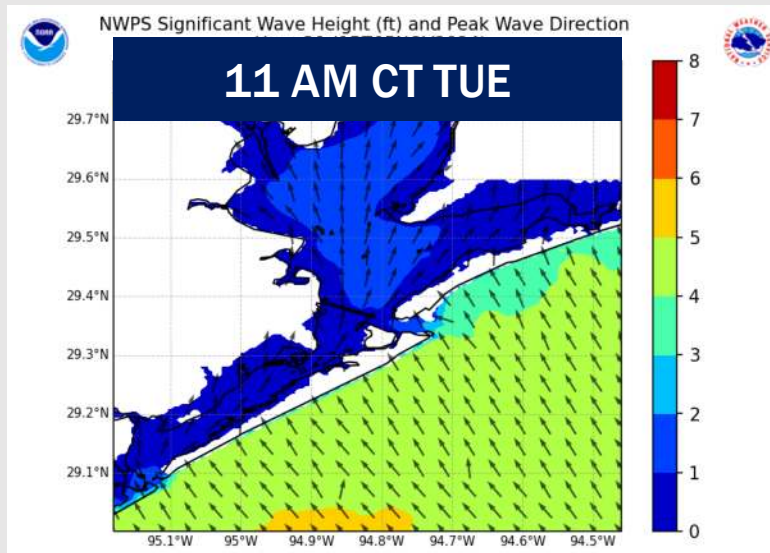
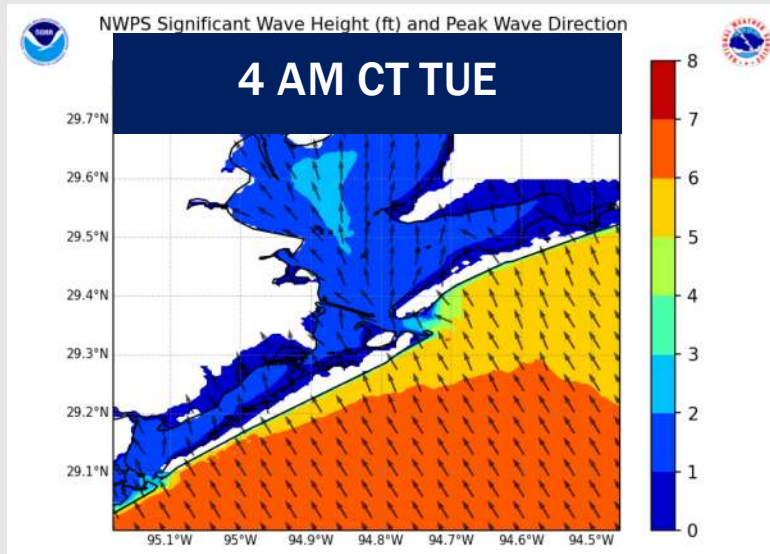


Port Condition	34 KTS+ Sustained Wind Trigger Reached at:	6 Foot Wave Trigger Reached at:	Time Remaining/Trigger Ends At:
Victor	---	---	---
Whiskey	---	---	---
X-Ray	---	---	---
Yankee	---	---	---
Zulu	---	Current	11 AM TUE

Port Condition	Trigger Definition	Trigger Reached?
Victor	Hurricane entering/developing in Gulf of Mexico that's a threat to the area	NO
Whiskey	72 hours prior to predicted sustained winds of 34+ KTS	NO
X-Ray	48 hours prior to predicted sustained winds of 34+ KTS or 6' wave height	YES
Yankee	24 hours prior to predicted sustained winds of 34+ KTS or 6' wave height	YES
Zulu	12 hours prior to predicted sustained winds of 34+ KTS or 6' wave height	YES

NOTES: Wave heights of 6'+ will continue through 11AM TUE for the Boarding Station. Wave heights of 3' - 4' are expected to continue through all of TUE.

Wave Height Forecast Update



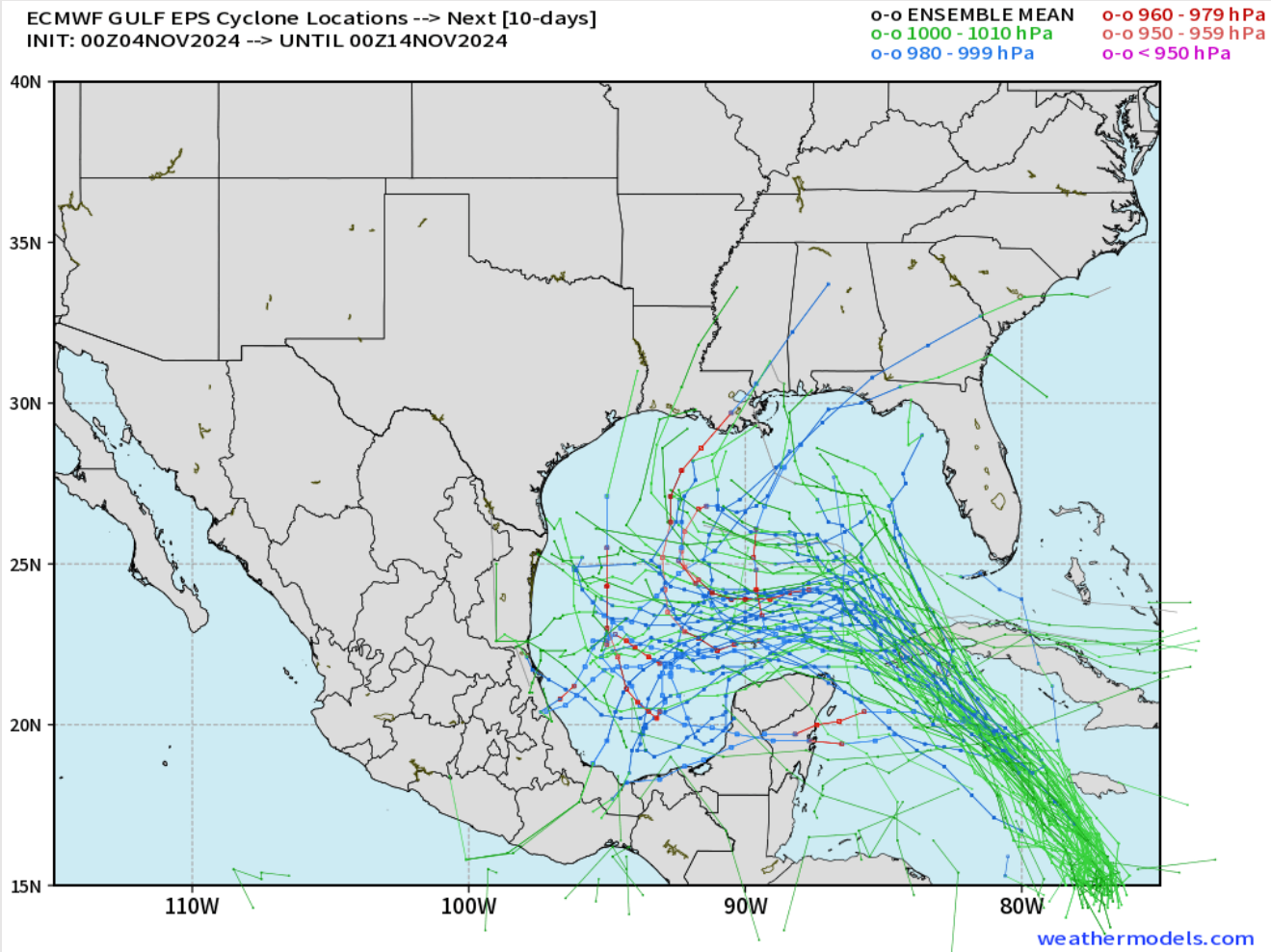
Wave heights of 5' – 7' will continue to be a hazard for the boarding station through 9 AM TUE.

Wave heights will gradually begin to dip below 6' by 11AM TUE.

Wave heights of 3' – 4' are expected linger through 12 AM WED, before dropping below 4' by 3 AM WED for the boarding station.

Houston Pilots Tropical Update

European Tropical Tracks - Next 10 Days



Tropical Storm Rafael has developed near Jamaica and is forecasted to push across the Republic of Cuba and into the Gulf of Mexico.

Confidence remains low in exact track, however potential into the C/W Gulf of Mexico will need to be monitored over the next few days. See graphic below for favored track map.

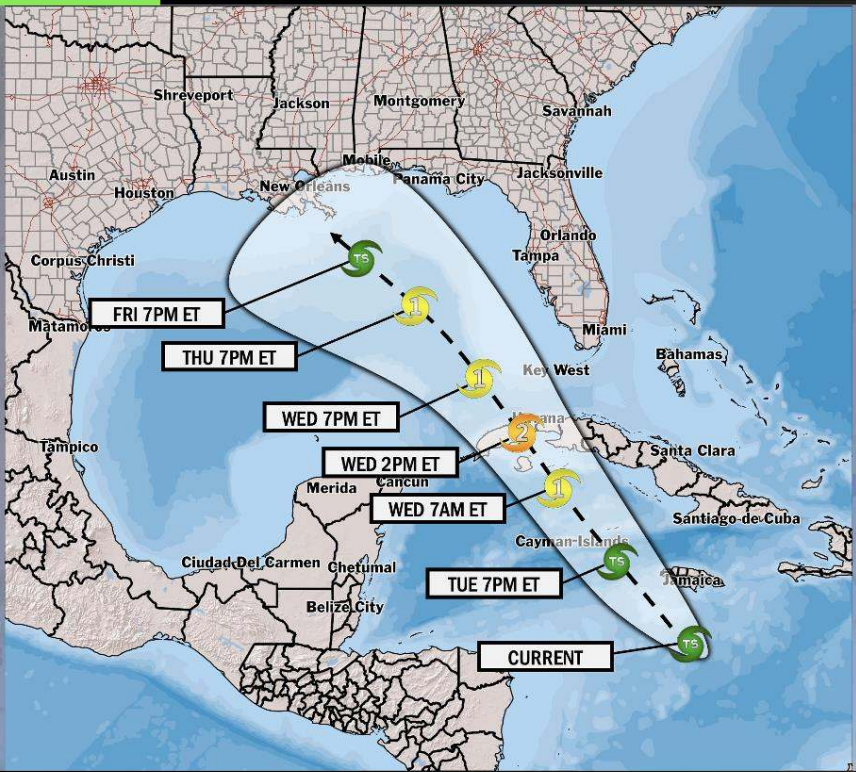
Direct impacts for HOU cannot be ruled out this weekend.

Houston Pilots Tropical Update



CLARITY Tropical Storm Rafael Update

TROPICAL INSIGHT 12:00 AM ET Tuesday, November 5, 2024 Forecaster: Kemper



TIMING: TUE 11/5 – FRI 11/8

FORECAST NOTES:

- ✓ Rafael is expected to remain a Category 1 Hurricane / Strong Tropical storm in the Gulf of Mexico after making landfall in the Republic of Cuba.
- ✓ While confidence remains low on where landfall will occur, we are looking at US impacts from ~11/8 – 11/10.



Houston Pilots Extended Range Visibility Report



Friday 11/8/24

Fog not favored for FRI.

Forecast Confidence



Saturday 11/9/24

Fog not favored for SAT.

Forecast Confidence



Sunday 11/10/24

Fog not favored for SUN.

Forecast Confidence



Chance for Fog

Friday AM	Unlikely
Friday PM	Unlikely
Saturday AM	Unlikely
Saturday PM	Unlikely
Sunday AM	Unlikely
Sunday PM	Unlikely

Houston Pilots Visibility Chart (miles)



Forecast Confidence



Visibility	Tue 3 am	Tue 4 am	Tue 5 am	Tue 6 am	Tue 7 am	Tue 8 am	Tue 9 am	Tue 10 am	Tue 11 am	Tue 12 pm	Tue 1 pm	Tue 2 pm	Tue 3 pm	Tue 4 pm	Tue 5 pm	Tue 6 pm	Tue 7 pm	Tue 8 pm	Tue 9 pm	Tue 10 pm	Tue 11 pm	Wed 12 am	Wed 1 am	Wed 2 am
Houston Pilots N - 610 Bridge	7.9	6.9	9	6.9	6.9	5.9	4.9	6.9	6.9	7.9	9	10	10	10	10	10	10	10	10	9	7.9	7.9	9	6.9
Houston Pilots M - Kinder 1	10	7.9	9	6.9	6.9	5.9	4.9	6.9	6.9	9	10	10	10	10	10	10	10	10	10	10	9	9	9	6.9
Houston Pilots L - Greens Bayou	10	10	10	6.9	6.9	5.9	4.9	6.9	9	10	10	10	10	10	10	10	10	10	10	10	10	10	10	8
Houston Pilots K - Shell Crude	10	10	10	7.9	6.9	5.9	4.9	6.9	9	10	10	10	10	10	10	10	10	10	10	10	10	10	10	8
Houston Pilots J - Lynchburg Ferries	10	10	10	10	6.9	3.9	4.9	6.9	9	10	10	10	10	10	10	10	10	10	10	10	10	10	10	8
Houston Pilots I - Exxon 3	10	10	10	10	9	6.9	3.9	4.9	9	10	10	10	10	10	10	10	10	10	10	10	10	10	10	8
Houston Pilots H - Morgans Point	10	10	10	10	10	10	3.9	4.9	10	10	10	10	10	10	10	10	10	10	10	10	10	10	10	8
Houston Pilots G - 75/76	10	10	10	10	10	10	3.9	4.9	10	10	10	10	10	10	10	10	10	10	10	10	10	10	10	9
Houston Pilots F - 63/64	10	10	10	10	10	10	9	4.9	10	5.9	10	10	10	10	10	10	10	10	10	10	10	10	10	9
Houston Pilots E - 51/52	10	10	10	10	10	10	10	10	7.9	6.9	10	10	10	10	10	10	10	10	10	10	10	10	10	9
Houston Pilots D - 37/38	10	10	10	10	10	10	10	10	7.9	5.9	10	10	10	10	10	10	10	10	10	10	10	10	10	9
Houston Pilots C - 25/26	10	10	10	10	10	10	10	10	7.9	4.9	10	10	10	10	10	10	10	10	10	10	10	10	10	9
Houston Pilots B - 11/12	10	10	10	10	10	10	10	10	10	6.9	10	10	10	10	10	10	10	10	10	10	10	10	10	9
Houston Pilots A - 1 & 2 Bravo	10	10	10	10	10	10	10	10	10	10	10	10	10	10	10	10	10	10	10	10	10	10	10	9

NOTE: This is automated data that may/may not agree with the official BAM thinking that's found on the daily slides or special visibility report slides. This data should be used as a guide only

Houston Pilots Wind Chart



Forecast Confidence



Sustained wind 10 Knots
Gusts 15 Knots
Wind from the SE

Example
10
15
↖

Wind	Tue 3 am	Tue 4 am	Tue 5 am	Tue 6 am	Tue 7 am	Tue 8 am	Tue 9 am	Tue 10 am	Tue 11 am	Tue 12 pm	Tue 1 pm	Tue 2 pm	Tue 3 pm	Tue 4 pm	Tue 5 pm	Tue 6 pm	Tue 7 pm	Tue 8 pm	Tue 9 pm	Tue 10 pm	Tue 11 pm	Wed 12 am	Wed 1 am	Wed 2 am
Houston Pilots N - 610 Bridge	13 24 ↑	12 22 ↑	10 21 ↑	10 18 ↑	9 17 ↑	10 17 ↘	9 17 ↘	9 17 ↘	9 17 ↘	8 17 ↘	8 15 ↘	7 15 ↘	6 14 ↘	6 13 ↘	6 12 ↘	6 10 ↘	5 9 ↘	5 9 ↘	3 8 ↘	3 9 ↘	3 8 ↘	3 8 ↘	3 8 ↘	5 9 ↘
Houston Pilots M - Kinder 1	13 24 ↑	12 22 ↑	10 21 ↑	10 20 ↑	9 17 ↑	10 17 ↘	9 17 ↘	9 17 ↘	9 17 ↘	8 17 ↘	8 15 ↘	8 15 ↘	7 14 ↘	6 13 ↘	6 12 ↘	6 10 ↘	5 9 ↘	3 9 ↘	3 8 ↘	3 9 ↘	3 8 ↘	3 8 ↘	3 8 ↘	5 9 ↘
Houston Pilots L - Greens Bayou	13 25 ↑	12 23 ↑	10 22 ↑	10 20 ↑	9 18 ↗	9 18 →	9 17 ↘	9 18 ↘	9 17 ↘	8 17 ↘	8 15 ↘	8 15 ↘	7 14 ↘	6 13 ↘	6 12 ↘	6 10 ↘	5 9 ↘	3 9 ↘	3 8 ↘	3 9 ↘	3 8 ↘	3 8 ↘	3 8 ↘	5 9 ↘
Houston Pilots K - Shell Crude	13 26 ↑	13 24 ↑	12 23 ↑	10 21 ↑	9 18 ↗	10 18 →	9 18 ↘	9 18 ↘	9 17 ↘	8 17 ↘	8 15 ↘	8 15 ↘	7 14 ↘	6 13 ↘	6 12 ↘	6 10 ↘	5 9 ↘	3 9 ↘	3 8 ↘	3 8 ↘	3 8 ↘	3 8 ↘	3 8 ↘	5 9 ↘
Houston Pilots J - Lynchburg Ferries	13 26 ↑	12 24 ↑	10 23 ↑	10 21 ↑	9 18 ↗	9 18 →	9 18 ↘	9 18 ↘	9 17 ↘	8 17 ↘	8 15 ↘	8 15 ↘	7 14 ↘	6 13 ↘	6 10 ↘	5 10 ↘	3 8 ↘	3 8 ↘	3 8 ↘	3 8 ↘	3 7 ↘	3 8 ↘	3 8 ↘	3 9 ↘
Houston Pilots I - Exxon 3	21 28 ↑	20 26 ↑	18 24 ↑	17 23 ↑	15 21 ↑	14 21 ↑	13 20 ↗	13 20 ↘	12 18 ↘	10 18 ↘	10 17 ↘	10 16 ↘	9 15 ↘	8 14 ↘	8 13 ↘	7 12 ↘	6 10 ↘	6 9 ↘	6 10 ↘	7 9 ↘	7 10 ↘	7 10 ↘	7 10 ↘	8 12 ↘
Houston Pilots H - Morgans Point	21 28 ↑	20 26 ↑	17 24 ↑	16 23 ↑	15 21 ↑	14 21 ↗	13 20 ↘	13 20 ↘	12 18 ↘	10 18 ↘	10 17 ↘	10 16 ↘	9 15 ↘	8 13 ↘	8 13 ↘	7 12 ↘	6 10 ↘	6 9 ↘	6 9 ↘	6 9 ↘	6 9 ↘	7 10 ↘	7 10 ↘	8 12 ↘
Houston Pilots G - 75/76	22 31 ↑	22 29 ↑	20 29 ↑	20 26 ↑	17 25 ↑	16 24 ↗	15 22 ↘	14 21 ↘	13 21 ↘	12 20 ↘	12 18 ↘	10 17 ↘	9 15 ↘	8 14 ↘	8 13 ↘	8 13 ↘	7 10 ↘	7 9 ↘	7 10 ↘	7 10 ↘	7 10 ↘	7 12 ↘	7 13 ↘	8 13 ↘
Houston Pilots F - 63/64	22 31 ↑	22 29 ↑	20 29 ↑	20 26 ↑	17 25 ↑	16 24 ↗	15 23 ↘	14 21 ↘	13 21 ↘	12 20 ↘	10 18 ↘	10 17 ↘	9 15 ↘	8 14 ↘	8 13 ↘	8 13 ↘	7 10 ↘	7 9 ↘	7 10 ↘	7 10 ↘	7 10 ↘	7 12 ↘	7 12 ↘	8 13 ↘
Houston Pilots E - 51/52	22 31 ↑	21 29 ↑	20 29 ↑	20 26 ↑	17 25 ↑	16 25 ↑	15 23 ↗	15 22 ↘	13 21 ↘	13 20 ↘	10 18 ↘	10 17 ↘	9 15 ↘	8 14 ↘	8 13 ↘	8 13 ↘	7 10 ↘	7 9 ↘	7 10 ↘	7 10 ↘	7 10 ↘	7 12 ↘	7 12 ↘	8 13 ↘
Houston Pilots D - 37/38	22 31 ↑	21 29 ↑	20 29 ↑	18 26 ↑	17 25 ↑	16 25 ↑	15 24 ↗	15 22 ↘	13 21 ↘	13 20 ↘	12 18 ↘	10 17 ↘	9 15 ↘	8 14 ↘	8 13 ↘	8 13 ↘	7 10 ↘	7 9 ↘	7 10 ↘	7 10 ↘	7 10 ↘	7 12 ↘	7 12 ↘	8 13 ↘
Houston Pilots C - 25/26	18 30 ↑	17 28 ↑	17 28 ↑	17 26 ↑	15 25 ↑	15 25 ↑	15 24 ↗	15 22 ↘	13 21 ↘	13 20 ↘	12 18 ↘	10 17 ↘	9 15 ↘	8 14 ↘	8 13 ↘	7 12 ↘	7 10 ↘	7 9 ↘	7 10 ↘	7 10 ↘	7 10 ↘	7 12 ↘	7 12 ↘	8 13 ↘
Houston Pilots B - 11/12	18 30 ↑	17 28 ↑	17 28 ↑	17 26 ↑	15 25 ↑	15 25 ↑	15 24 ↗	15 22 ↘	13 21 ↘	13 20 ↘	12 18 ↘	10 17 ↘	9 15 ↘	8 14 ↘	8 13 ↘	7 12 ↘	6 10 ↘	6 9 ↘	6 10 ↘	6 10 ↘	6 10 ↘	6 12 ↘	6 12 ↘	7 12 ↘
Houston Pilots A - 1 & 2 Bravo	22 32 ↑	21 30 ↑	21 30 ↑	20 29 ↑	18 26 ↑	17 26 ↑	17 26 ↑	15 24 ↗	15 23 ↘	14 21 ↘	13 20 ↘	12 18 ↘	10 16 ↘	9 15 ↘	8 14 ↘	8 13 ↘	7 12 ↘	7 10 ↘	7 12 ↘	7 12 ↘	7 10 ↘	7 12 ↘	7 12 ↘	8 13 ↘

NOTE: This is automated data that may/may not agree with the official BAM thinking that's found on the daily slides. This data should be used as a guide only.

Houston Pilots: TUE. 11/5/2024



Forecast Discussion

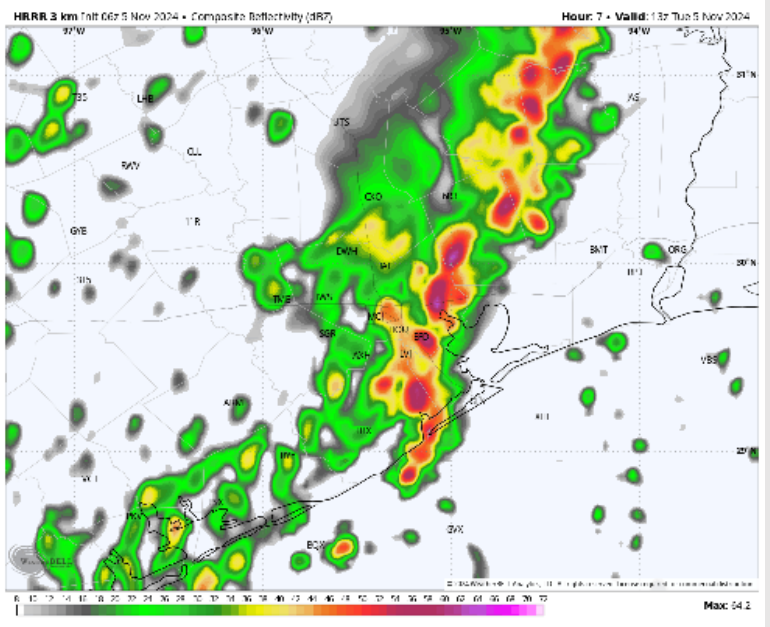
Precip: A weakening line of storms will impact all stations between ~7AM and 10AM (80%). Beyond 10AM, a few localized, brief showers (20%) will remain in play through 5PM before dry conditions persist through evening.

Wind: Winds will be out of the S through 9 AM before transitioning to out of the N/NW after the front passes through. Winds will remain out of the N / NW through the rest of the day. **N of Morgan's Point:** Winds will 5 – 10 kts, decreasing to 3 – 8 kts after 2 PM. **S of Morgan's Point:** Winds will begin at 18 – 22 kts, decreasing to 10– 15 kts after 1 PM, further decreasing to 8 – 13 kts after 5 PM. **Wind gusts of 20-30 kts in play for all Stations through 10 AM as the front passes through the area.**

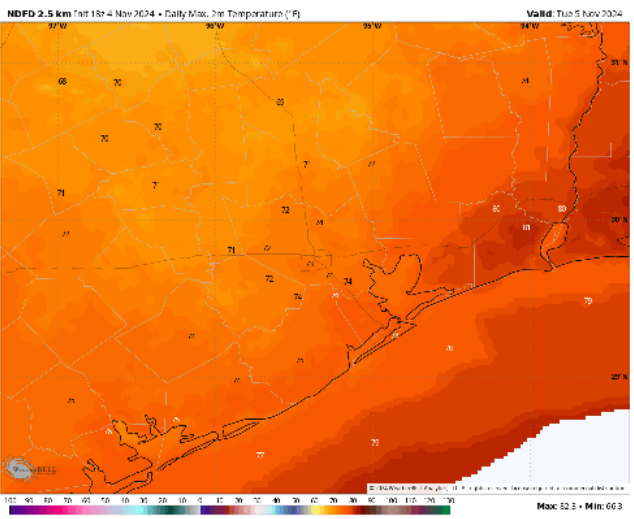
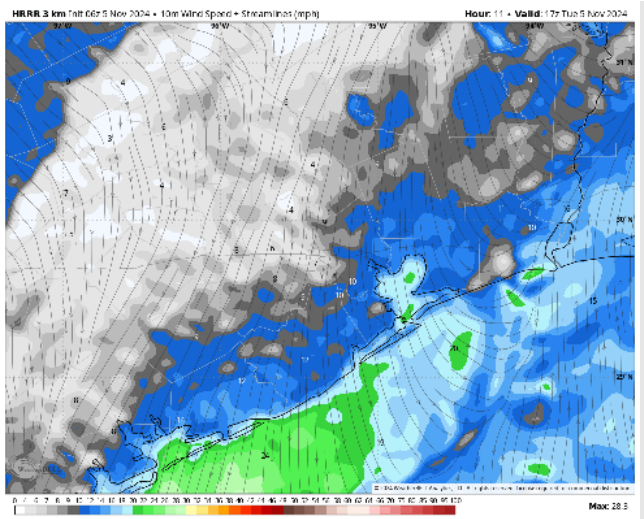
High Temps: **N of Morgan's Point:** Mid 70s F. **S of Morgan's Point:** Mid to Upper 70s F

Visibility: Visibilities may be reduced in heavy downpours. Otherwise, no fog concerns for any Stations.

Precip Image: 7 AM CT



Wind Speed:
11 AM CT



High Temps
Today

Houston Pilots: WED. 11/6/2024



Forecast Discussion

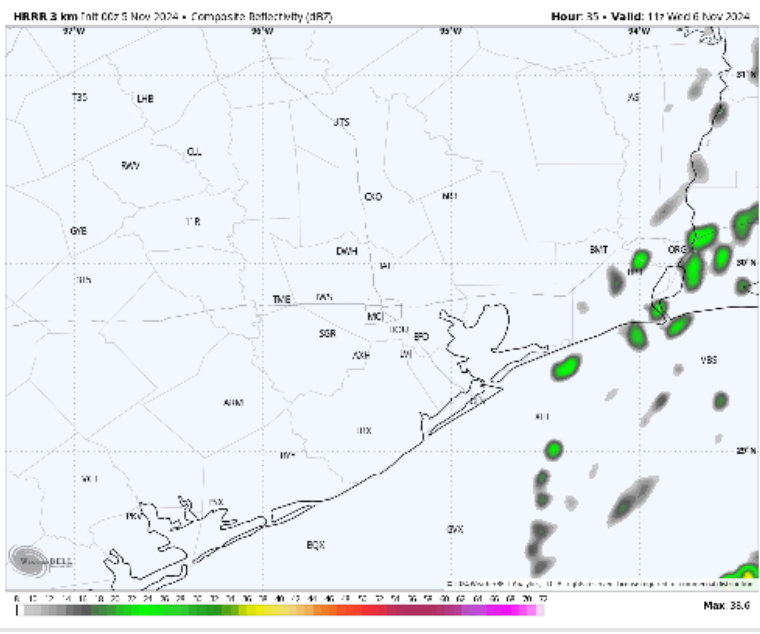
Precip: Hit/miss showers (20%) in play for Stations S of Morgan's Point from 5 - 9 AM.

Wind: Winds will be out of the N/NNE through 11 AM, rotating clockwise out of E/ESE after that time and remaining there for the rest of the day. **N of Morgan's Point:** Winds will be at 3-8 kts throughout the day. **S of Morgan's Point:** Winds will be at 6-11 kts throughout the day.

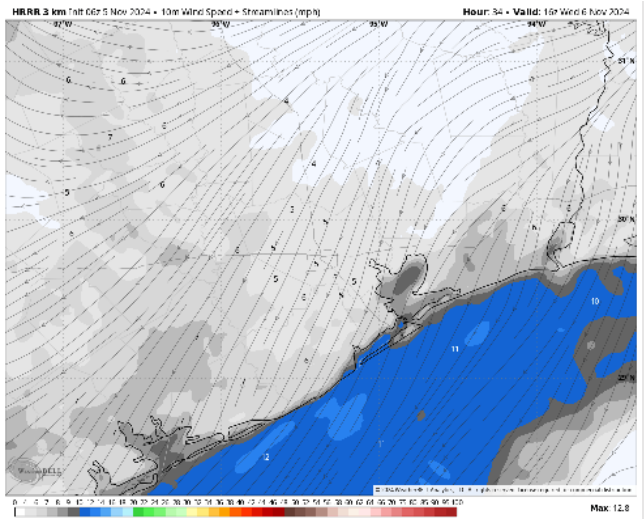
High Temps: **N of Morgan's Point:** Upper 70s to low 80s F. **S of Morgan's Point:** Mid to upper 70s F.

Visibility: No fog concerns for any stations on Wednesday.

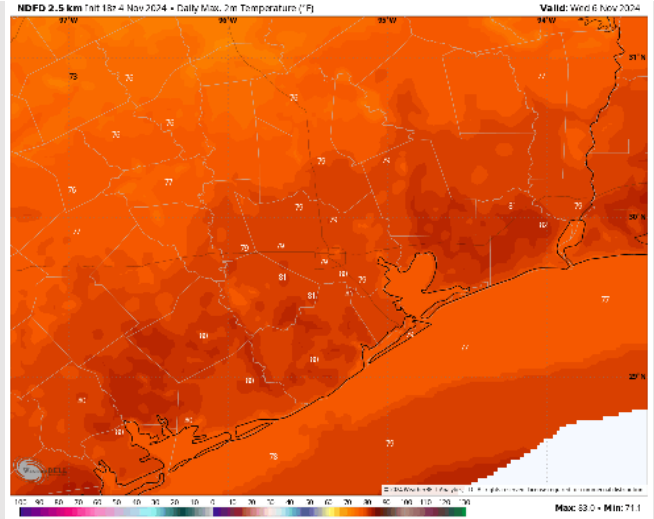
Precip Image: 5 AM CT



Wind Speed



Wind Speed
10 AM CT



High Temps
Wednesday

Houston Pilots: THU. 11/7/2024



Forecast Discussion

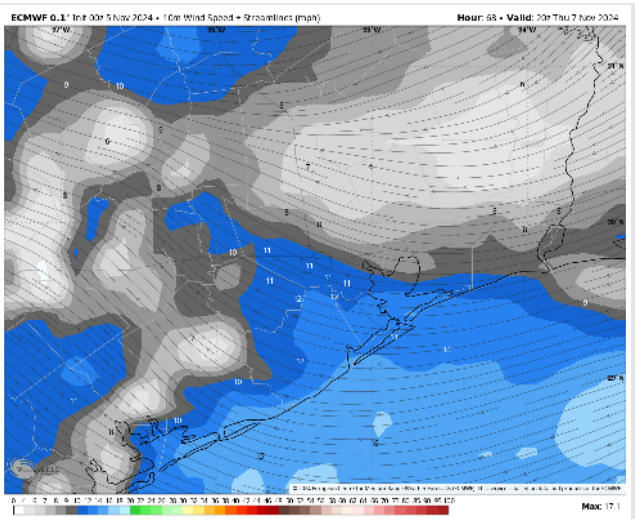
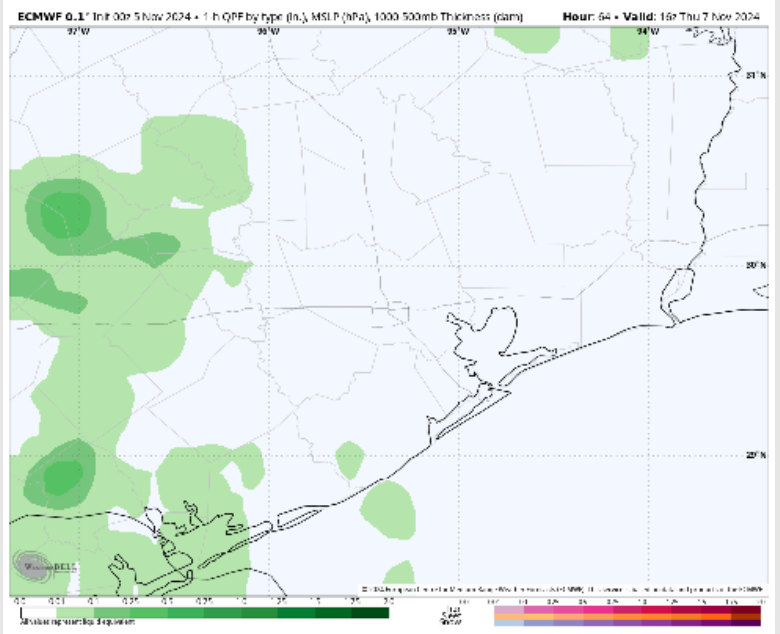
Precip: Isolated showers (20%) will be possible for all stations from 1PM – 6PM on Thursday.

Wind: Winds will be out of the E - ESE throughout Thursday.
N of Morgan's Point: Winds will be at 7 – 11 kts throughout Thursday.
S of Morgan's Point: Winds will be 10 – 15 kts for the entire day.

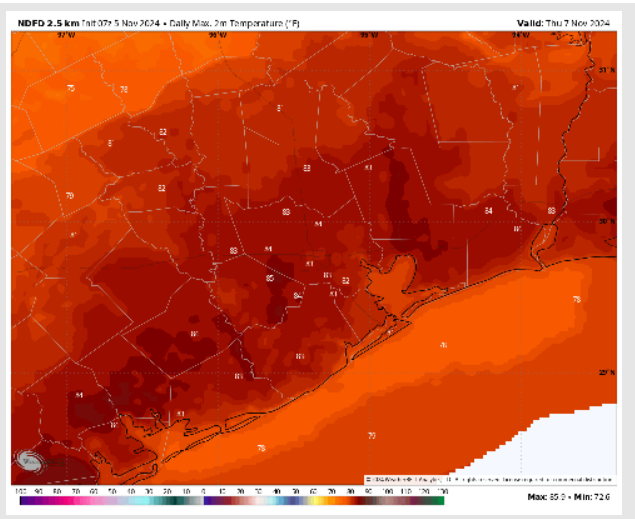
High Temps: **N of Morgan's Point:** Lower 80s F. **S of Morgan's Point:** Upper 70s F.

Visibility: No fog concerns for stations for Thursday.

Precip Image: 10 AM CT



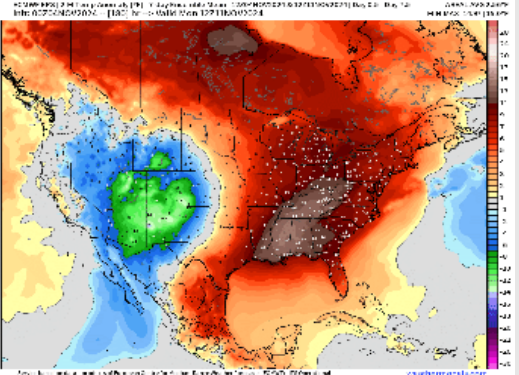
Wind Speed:
2 PM CT



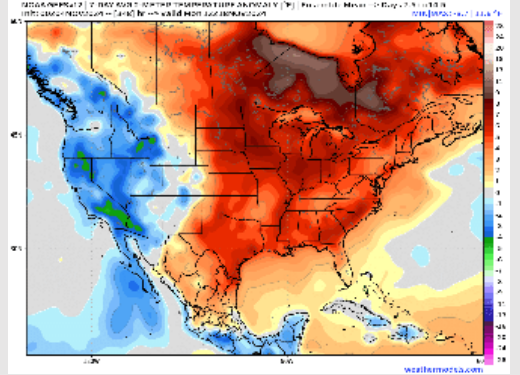
High Temps
Thursday

Houston Pilots: 11/5/24

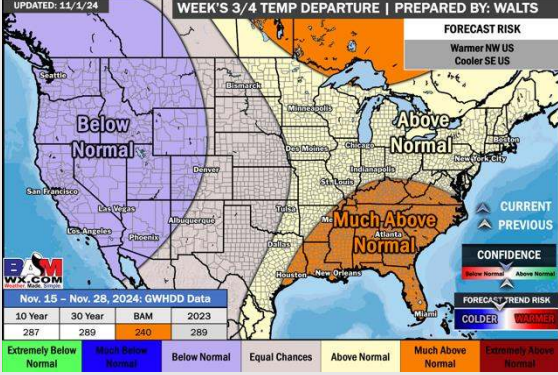
Next 7 Day Temperature Departure



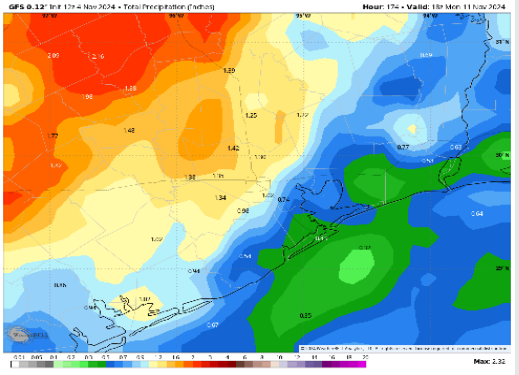
8-14 Day Temperature Departure



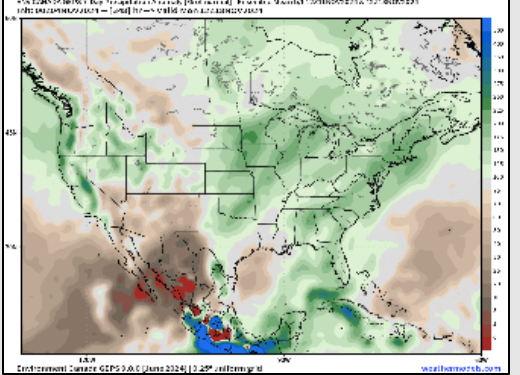
15-30 Day Temperature Departure



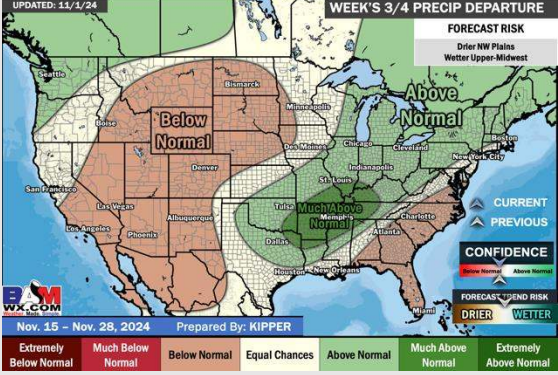
Next 7 Day Total Precipitation



8-14 Day % of Average Precip.



15-30 Day % of Average Precip.



- Temps are expected to be above normal for the week 1 timeframe. Favoring scattered rain chances to continue for the week 1 period.
- Above normal temperatures are favored for week 2. Favoring precipitation to be right around normal depending on the track of the upcoming tropical system.
- Above normal temperatures and near normal precipitation chances are expected for the weeks 3/4 timeframe.