

Houston Pilots Forecast Package



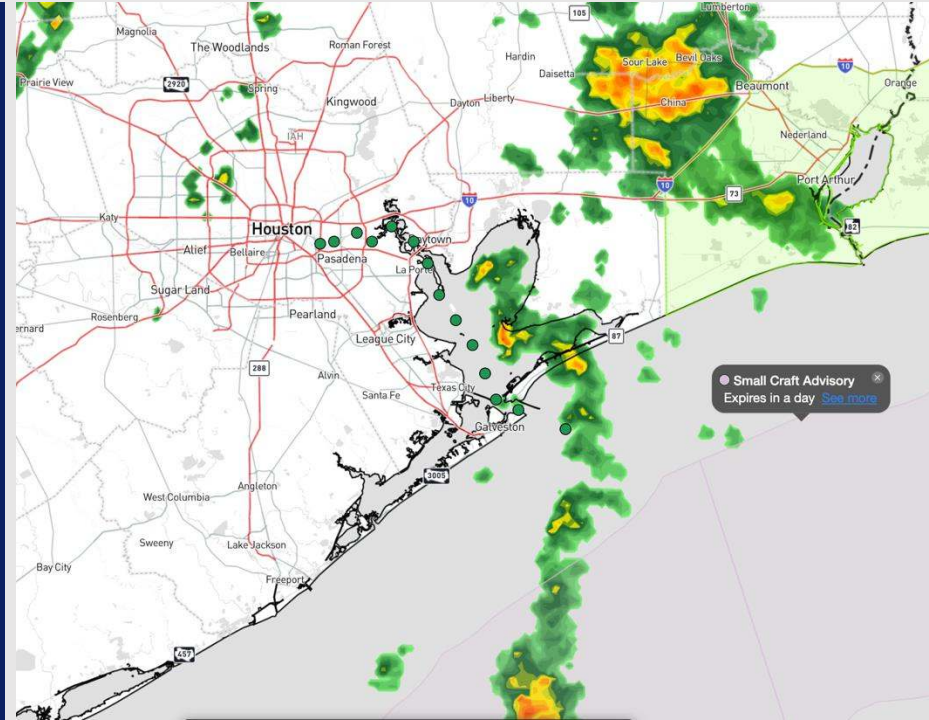
Updated: 10:00 PM CT

Saturday, November 9, 2024

Forecaster: Xander Lowry

Weather Headlines

- Zulu Port Trigger has been activated for elevated wave heights. See wave height slide for more info.
- A few Strong Storms will be possible Saturday, with risks for 35-40 kts wind gusts and hail.
- Tropical Storm Rafael is not expected to make impacts to the US. See hurricane tracks and map below.
- Latest Video Update: [Zulu Trigger Update](#)



Current Radar: 9:50 PM CT



As always, please do not hesitate to reach out to us with any forecast questions via the chat option on Clarity or our on-call number, **(317)-560-8122** press 1 for forecast questions.

Houston Pilots Port Trigger Update

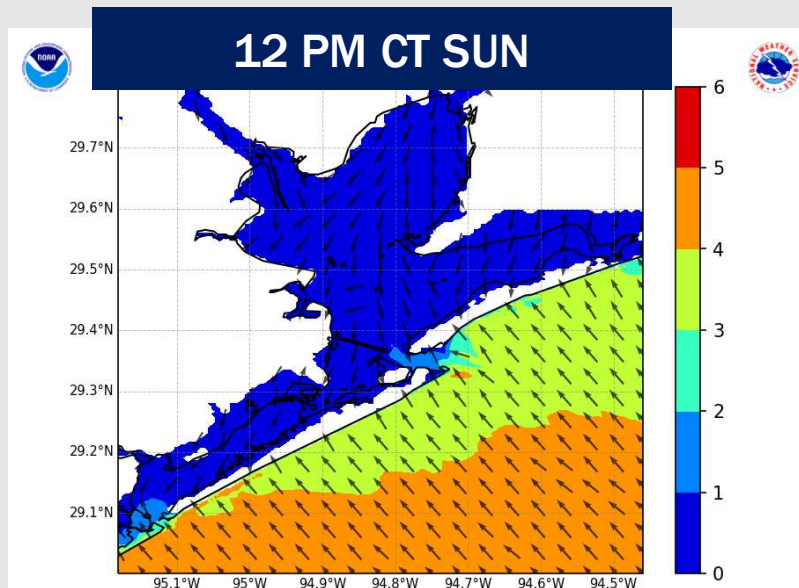
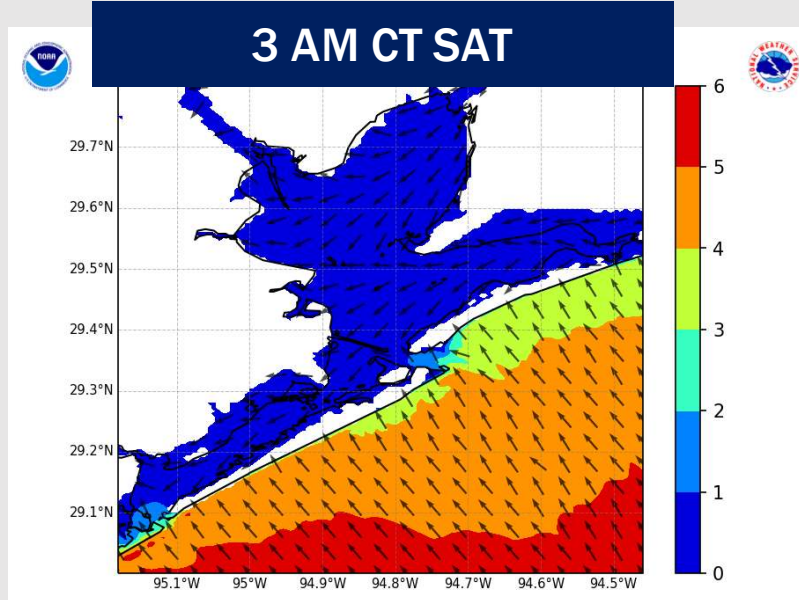


Port Condition	34 KTS+ Sustained Wind Trigger Reached at:	6 Foot Wave Trigger Reached at:	Time Remaining/Trigger Ends At:
Victor	---	---	---
Whiskey	---	---	---
X-Ray	---	---	---
Yankee	---	---	---
Zulu	---	CURRENT	SUN 12 PM

Port Condition	Trigger Definition	Trigger Reached?
Victor	Hurricane entering/developing in Gulf of Mexico that's a threat to the area	NO
Whiskey	72 hours prior to predicted sustained winds of 34+ KTS	NO
X-Ray	48 hours prior to predicted sustained winds of 34+ KTS or 6' wave height	NO
Yankee	24 hours prior to predicted sustained winds of 34+ KTS or 6' wave height	NO
Zulu	12 hours prior to predicted sustained winds of 34+ KTS or 6' wave height	YES

NOTES: Tropical Storm Rafael has entered the Gulf of Mexico. Wave will continue to increase through Saturday for HOU. Wave heights of at least 6' can be expected by 12AM-CT SAT. The increased wave heights are expected to linger through SAT afternoon and into SUN before ending by 12PM SUN

Wave Height Forecast Update



Wave heights will slowly increase throughout the late evening FRI at the Boarding Station reaching 4'-6' by 12AM Saturday

Wave heights of 4'-6', with infrequent potential for up to 8' will be possible throughout the day on Saturday.

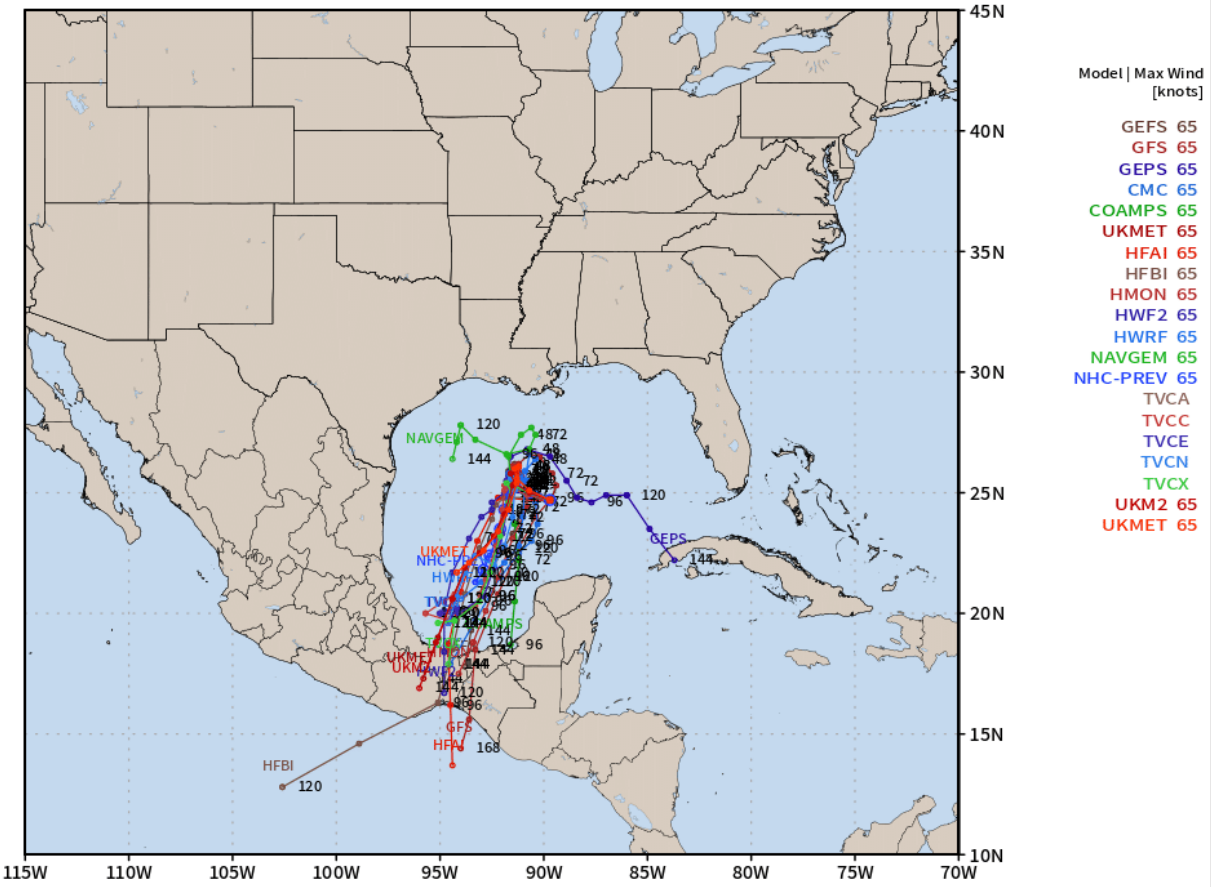
Favor wave heights to slowly decrease during the morning hours SUN dipping below 6' by 12PM

Houston Pilots Tropical Update



Various Hurricane Tracks - Rafael

AL18 RAFAEL Guidance valid: 2024110900



Note: This map includes raw model data from 6 or 12 hours prior. Consult NHC Official Forecasts. Model guidance only expert interpretation required. Source: <https://weathermodels.com>

Tropical Storm Rafael continues to push W further into the Gulf of Mexico.

As Rafael moves further into the Gulf of Mexico, we are expecting Rafael to continue to weaken before turning southwestward towards Mexico.

Confidence remains has grown in the SW/S track and impacts for Houston are not favored.

More information on the next slide.

Houston Pilots Tropical Update

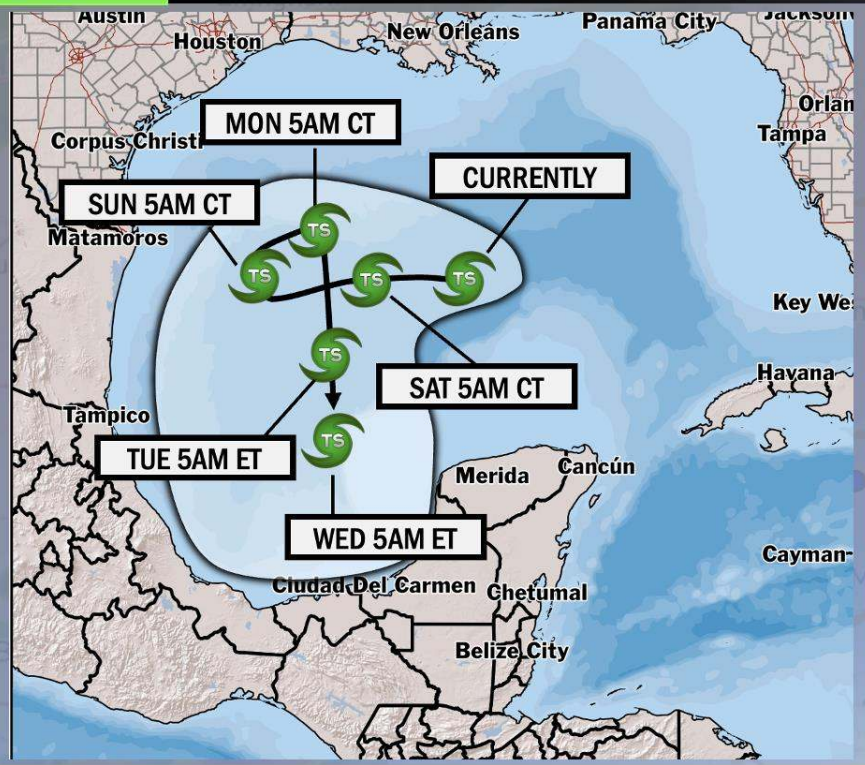


Tropical Storm Rafael Update

TROPICAL INSIGHT

9:50 PM CT Friday, November 8, 2024

Forecaster: Feick



TIMING: FRI 11/8 – WED 11/13

FORECAST NOTES:

- ✓ Rafael is favored to continue as a Tropical Storm through the Gulf, with further weakening expected into the weekend.
- ✓ While confidence remains low on the exact track of this storm, impacts to the US are not expected.



Houston Pilots Extended Range Visibility Report



Tuesday 11/12/24

Fog not favored for TUE.

Forecast Confidence



Thursday 11/14/24

Fog not favored for THU.

Forecast Confidence



Wednesday 11/13/24

Fog not favored for WED.

Forecast Confidence



Chance for Fog

Tuesday AM	Unlikely
Tuesday PM	Unlikely
Wednesday AM	Unlikely
Wednesday PM	Unlikely
Thursday AM	Unlikely
Thursday PM	Unlikely

Houston Pilots Visibility Chart (miles)



Forecast Confidence



Visibility	Fri 11 pm	Sat 12 am	Sat 1 am	Sat 2 am	Sat 3 am	Sat 4 am	Sat 5 am	Sat 6 am	Sat 7 am	Sat 8 am	Sat 9 am	Sat 10 am	Sat 11 am	Sat 12 pm	Sat 1 pm	Sat 2 pm	Sat 3 pm	Sat 4 pm	Sat 5 pm	Sat 6 pm	Sat 7 pm	Sat 8 pm	Sat 9 pm	Sat 10 pm	
Houston Pilots N - 610 Bridge	9	7.9	6.9	5.9	5.9	5.9	4.9	4.9	4.9	3.9	3.9	3.9	5.9	6.9	7.9	6.9	6.9	7.9	6.9	6.9	6.9	5.9	4.9	4.9	
Houston Pilots M - Kinder 1	10	9	6.9	5.9	5.9	5.9	4.9	4.9	4.9	3.9	3.9	3.9	5.9	6.9	7.9	6.9	7.9	7.9	6.9	6.9	6.9	5.9	4.9	4.9	
Houston Pilots L - Greens Bayou	10	9	7.9	5.9	5.9	5.9	4.9	4.9	4.9	3.9	3.9	3.9	5.9	6.9	7.9	9	7.9	9	7.9	6.9	6.9	6.9	5.9	4.9	
Houston Pilots K - Shell Crude	10	10	7.9	6.9	5.9	5.9	4.9	4.9	4.9	3.9	3.9	4.9	5.9	6.9	10	9	7.9	9	7.9	6.9	6.9	6.9	5.9	4.9	
Houston Pilots J - Lynchburg Ferries	10	9	7.9	6.9	5.9	5.9	4.9	4.9	4.9	3.9	3.9	3.9	5.9	6.9	9	9	7.9	9	7.9	6.9	6.9	6.9	5.9	4.9	
Houston Pilots I - Exxon 3	10	10	7.9	6.9	5.9	5.9	4.9	4.9	4.9	3.9	3.9	4.9	5.9	6.9	10	9	7.9	9	7.9	6.9	6.9	6.9	5.9	4.9	
Houston Pilots H - Morgans Point	10	10	9	6.9	5.9	5.9	5.9	4.9	4.9	3.9	3.9	4.9	5.9	6.9	10	9	9	9	7.9	6.9	6.9	6.9	5.9	4.9	
Houston Pilots G - 75/76	10	7.9	7.9	6.9	5.9	4.9	4.9	4.9	4.9	4.9	3.9	3.9	4.9	4.9	5.9	4.9	4.9	5.9	4.9	4.9	4.9	4.9	5	6	6
Houston Pilots F - 63/64	10	7.9	7.9	6.9	5.9	4.9	4.9	4.9	4.9	4.9	3.9	3.9	4.9	4.9	5.9	4.9	4.9	5.9	4.9	4.9	4.9	4.9	5	5	4
Houston Pilots E - 51/52	7.9	7.9	7.9	6.9	5.9	4.9	4.9	4.9	5.9	4.9	3.9	3.9	4.9	4.9	4.9	4.9	4.9	5.9	4.9	4.9	4.9	4.9	6	4	1.2
Houston Pilots D - 37/38	7.9	7.9	7.9	6.9	5.9	4.9	4.9	4.9	5.9	4.9	3.9	3.9	4.9	4.9	4.9	4.9	4.9	5.9	4.9	4.9	4.9	4.9	6	2.5	1.2
Houston Pilots C - 25/26	7.9	6.9	7.9	6.9	5.9	5.9	5.9	5.9	5.9	4.9	3.9	3.9	4.9	4.9	4.9	4.9	4.9	5.9	4.9	4.9	4.9	4.9	6	2	1.2
Houston Pilots B - 11/12	6.9	6.9	7.9	6.9	5.9	5.9	6.9	6.9	6.9	4.9	4.9	3.9	4.9	4.9	4.9	4.9	4.9	4.9	4.9	4.9	4.9	4.9	4	2	1.2
Houston Pilots A - 1 & 2 Bravo	6.9	6.9	6.9	6.9	5.9	5.9	5.9	6.9	6.9	5.9	4.9	3.9	4.9	4.9	4.9	4.9	4.9	4.9	4.9	4.9	4.9	4.9	1.6	1.2	1.2

NOTE: This is automated data that may/may not agree with the official BAM thinking that's found on the daily slides or special visibility report slides. This data should be used as a guide only

Houston Pilots Wind Chart



Sustained wind 10 Knots
 Gusts 15 Knots
 Wind from the SE

Example

10
 15
 ↙

Wind	Fri 11 pm	Sat 12 am	Sat 1 am	Sat 2 am	Sat 3 am	Sat 4 am	Sat 5 am	Sat 6 am	Sat 7 am	Sat 8 am	Sat 9 am	Sat 10 am	Sat 11 am	Sat 12 pm	Sat 1 pm	Sat 2 pm	Sat 3 pm	Sat 4 pm	Sat 5 pm	Sat 6 pm	Sat 7 pm	Sat 8 pm	Sat 9 pm	Sat 10 pm
Houston Pilots N - 610 Bridge	3 ↙	3 ↙	3 ↙	3 ↙	3 ↙	3 ↙	5 ↙	6 ↙	7 ↙	8 ↙	8 ↙	8 ↙	8 ↙	8 ↙	8 ↙	8 ↙	7 ↙	7 ↙	7 ↙	7 ↙	6 ↙	6 ↙	6 ↙	6 ↙
Houston Pilots M - Kinder 1	3 ↙	3 ↙	3 ↙	3 ↙	3 ↙	3 ↙	5 ↙	6 ↙	7 ↙	8 ↙	8 ↙	8 ↙	8 ↙	8 ↙	8 ↙	8 ↙	8 ↙	7 ↙	7 ↙	7 ↙	6 ↙	6 ↙	6 ↙	6 ↙
Houston Pilots L - Greens Bayou	3 ↙	3 ↙	3 ↙	3 ↙	3 ↙	3 ↙	5 ↙	6 ↙	6 ↙	7 ↙	7 ↙	8 ↙	8 ↙	8 ↙	8 ↙	8 ↙	8 ↙	7 ↙	7 ↙	6 ↙	6 ↙	6 ↙	6 ↙	5 ↙
Houston Pilots K - Shell Crude	3 ↙	3 ↙	3 ↙	3 ↙	3 ↙	3 ↙	5 ↙	6 ↙	6 ↙	7 ↙	7 ↙	8 ↙	8 ↙	8 ↙	8 ↙	8 ↙	8 ↙	8 ↙	7 ↙	7 ↙	6 ↙	6 ↙	6 ↙	6 ↙
Houston Pilots J - Lynchburg Ferries	3 ↙	3 ↙	3 ↙	3 ↙	3 ↙	3 ↙	3 ↙	5 ↙	6 ↙	6 ↙	7 ↙	7 ↙	8 ↙	8 ↙	8 ↙	8 ↙	8 ↙	8 ↙	7 ↙	7 ↙	6 ↙	6 ↙	5 ↙	5 ↙
Houston Pilots I - Exxon 3	8 ↙	12 ↙	10 ↙	9 ↙	9 ↙	10 ↙	12 ↙	13 ↙	14 ↙	15 ↙	15 ↙	15 ↙	16 ↙	16 ↙	16 ↙	16 ↙	16 ↙	15 ↙	14 ↙	14 ↙	13 ↙	13 ↙	13 ↙	13 ↙
Houston Pilots H - Morgans Point	8 ↙	12 ↙	10 ↙	9 ↙	9 ↙	10 ↙	10 ↙	12 ↙	14 ↙	14 ↙	15 ↙	15 ↙	16 ↙	16 ↙	16 ↙	16 ↙	16 ↙	16 ↙	15 ↙	14 ↙	14 ↙	13 ↙	12 ↙	13 ↙
Houston Pilots G - 75/76	8 ↙	14 ↙	13 ↙	12 ↙	12 ↙	12 ↙	13 ↙	14 ↙	15 ↙	15 ↙	15 ↙	16 ↙	17 ↙	17 ↙	17 ↙	17 ↙	16 ↙	16 ↙	16 ↙	15 ↙	15 ↙	14 ↙	14 ↙	14 ↙
Houston Pilots F - 63/64	8 ↙	14 ↙	13 ↙	12 ↙	12 ↙	12 ↙	13 ↙	14 ↙	15 ↙	15 ↙	16 ↙	16 ↙	17 ↙	17 ↙	17 ↙	16 ↙	16 ↙	16 ↙	15 ↙	15 ↙	14 ↙	14 ↙	14 ↙	14 ↙
Houston Pilots E - 51/52	9 ↙	15 ↙	14 ↙	13 ↙	13 ↙	13 ↙	13 ↙	14 ↙	15 ↙	15 ↙	16 ↙	16 ↙	17 ↙	17 ↙	17 ↙	17 ↙	16 ↙	16 ↙	16 ↙	15 ↙	15 ↙	14 ↙	14 ↙	15 ↙
Houston Pilots D - 37/38	9 ↙	15 ↙	14 ↙	13 ↙	13 ↙	13 ↙	14 ↙	15 ↙	16 ↙	16 ↙	16 ↙	17 ↙	17 ↙	17 ↙	17 ↙	17 ↙	16 ↙	16 ↙	16 ↙	15 ↙	15 ↙	15 ↙	15 ↙	15 ↙
Houston Pilots C - 25/26	9 ↙	15 ↙	14 ↙	13 ↙	13 ↙	13 ↙	14 ↙	14 ↙	15 ↙	15 ↙	16 ↙	16 ↙	17 ↙	17 ↙	17 ↙	17 ↙	17 ↙	17 ↙	16 ↙	16 ↙	16 ↙	15 ↙	15 ↙	15 ↙
Houston Pilots B - 11/12	8 ↙	15 ↙	14 ↙	14 ↙	13 ↙	13 ↙	14 ↙	15 ↙	15 ↙	15 ↙	16 ↙	16 ↙	17 ↙	17 ↙	17 ↙	17 ↙	17 ↙	16 ↙	16 ↙	16 ↙	15 ↙	15 ↙	16 ↙	16 ↙
Houston Pilots A - 1 & 2 Bravo	12 ↙	17 ↙	10 ↙	10 ↙	10 ↙	10 ↙	10 ↙	10 ↙	10 ↙	12 ↙	12 ↙	12 ↙	12 ↙	12 ↙	12 ↙	10 ↙	10 ↙	10 ↙	10 ↙	12 ↙	12 ↙	12 ↙	12 ↙	12 ↙

NOTE: This is automated data that may/may not agree with the official BAM thinking that's found on the daily slides. This data should be used as a guide only.

Houston Pilots: SAT. 11/9/2024



Forecast Discussion

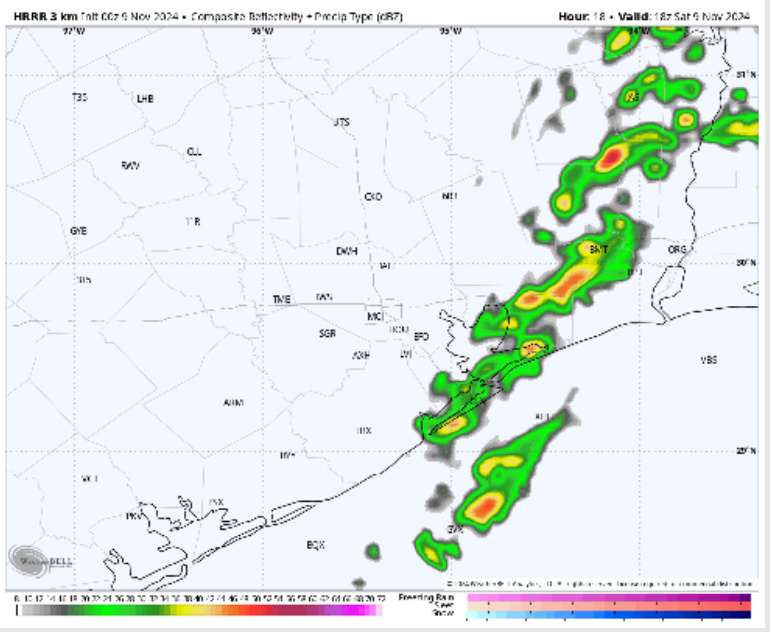
Precip: Scattered activity will work in after 4AM. After 9AM scattered-to-widespread showers/storms will move through for all stations through 2PM. Linger isolated showers/storms can be possible throughout the rest of the night with greatest risk S of Morgan's Point. **Strongest cells will be capable of hail and 35-40kts wind gusts.**

Wind: Winds will be out of the NE through 7AM, before shifting to be out of the N/NE for the rest of the day. **N of Morgan's Point:** Winds will be at 4 - 9 kts throughout today. **S of Morgan's Point:** Winds will be at 10-15 kts through the day.

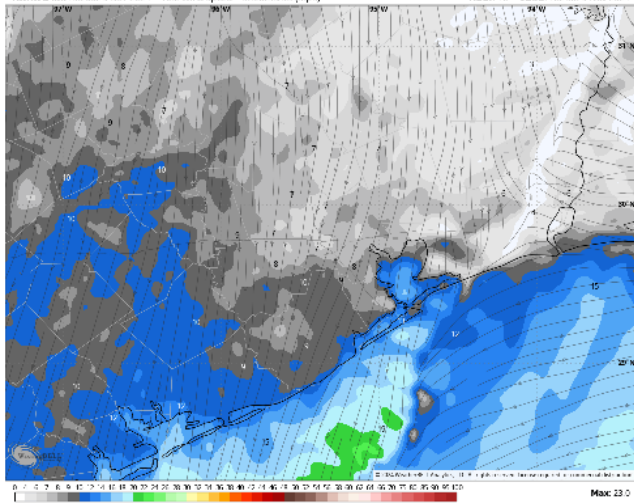
High Temps: **N of Morgan's Point:** Upper 70s. **S of Morgan's Point:** Mid to upper 70s F.

Visibility: No fog concerns for stations today, however visibility can be reduced briefly from heavier showers and storms.

Precip Image: 12 PM CT

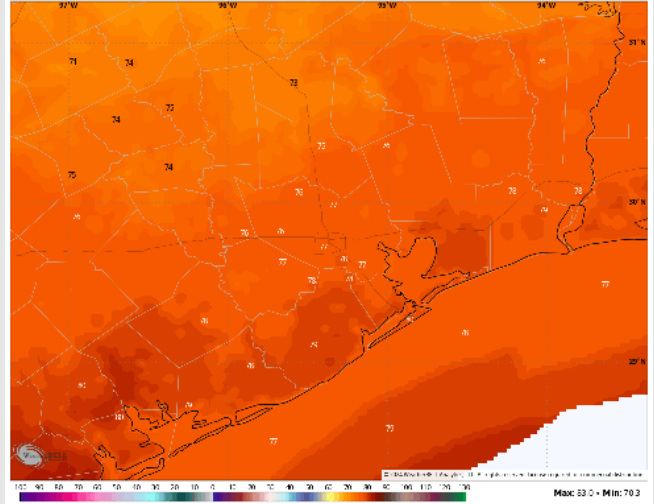


HRRR 3 km 12 PM CT 9 Nov 2024 • 10m Wind Speed • Streamlines (mph)



Wind Speed
12 PM CT

NDFD 2.5 km 12 PM CT 9 Nov 2024 • Daily Max. 2m Temperatures (°F)



High Temps
Today

Houston Pilots: SUN. 11/10/2024



Forecast Discussion

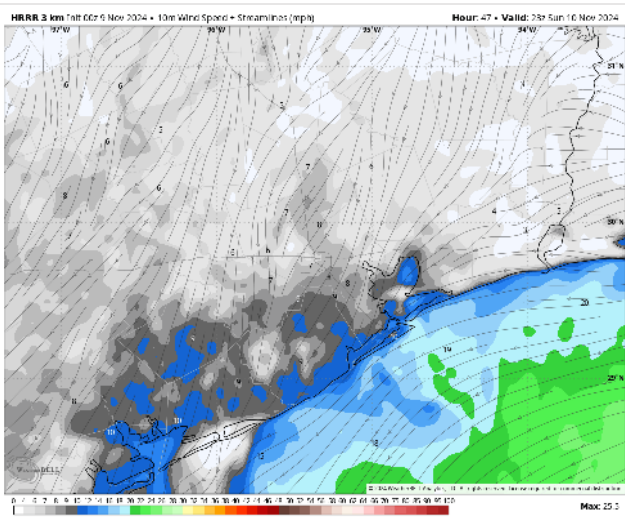
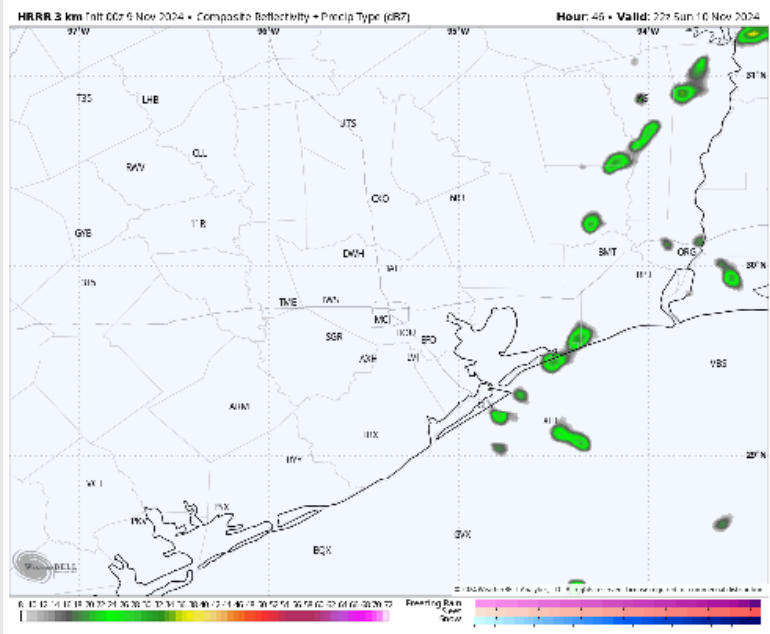
Precip: Isolated (10-20%) showers will be possible from 2AM – 12PM Sunday Mainly S of Morgan’s Point. Isolated chances will linger through 6PM for the boarding station before drying out.

Wind: Winds will be out of the NNE through the day. **N of Morgan’s Point:** Winds will be at 3 – 9 kts throughout Sunday. **S of Morgan’s Point:** Winds will be 8 – 11 kts through 4PM, before a slight increase to 10 – 15 kts for the rest of the today Sunday.

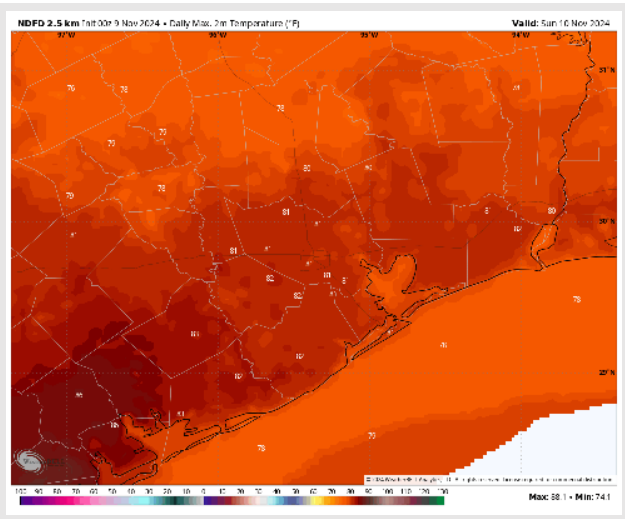
High Temps: **N of Morgan’s Point:** Low 80s F. **S of Morgan’s Point:** Upper 70s F.

Visibility: Not anticipating any fog concerns for Sunday.

Precip Image: 4 PM CT



Wind Speed:
5 PM CT



High Temps
Sunday

Houston Pilots: MON. 11/11/2024



Forecast Discussion

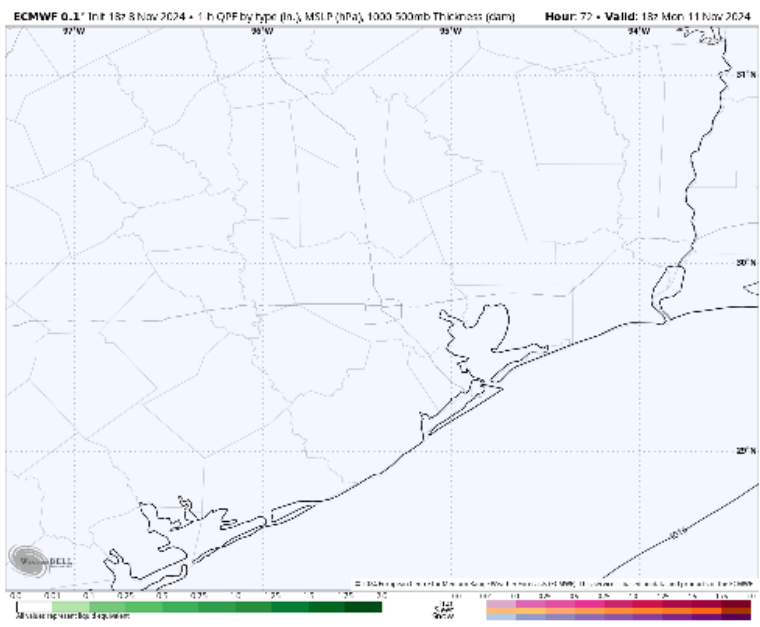
Precip: Favoring dry conditions throughout the day on Monday.

Wind: Winds will be out of the N/NE throughout the day on Monday. **N of Morgan's Point:** Winds at 3 – 8 kts throughout the day on Monday. **S of Morgan's Point:** Winds at 9 - 14 kts through the day on Monday.

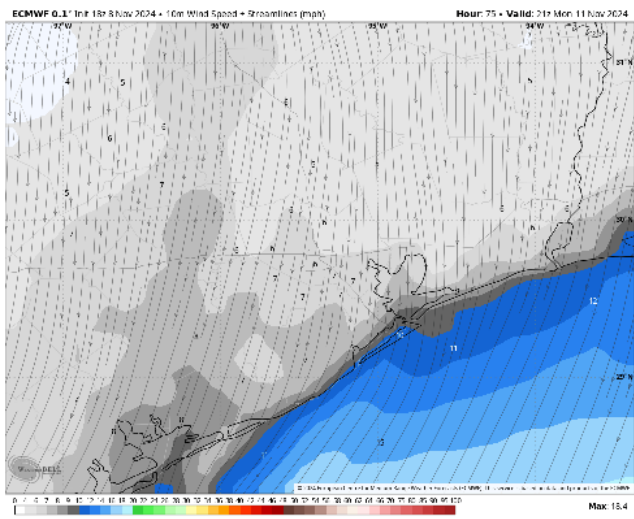
High Temps: **N of Morgan's Point:** Lower 80 F. **S of Morgan's Point:** Upper 70s F

Visibility: Not anticipating any fog concerns for Monday.

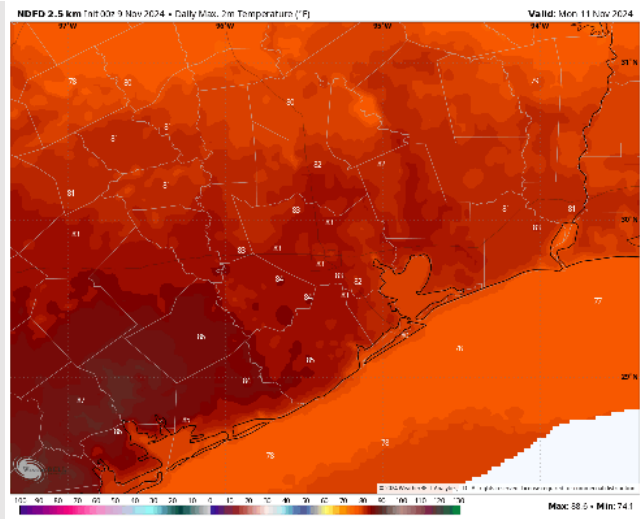
Precip Image: 12 PM CT



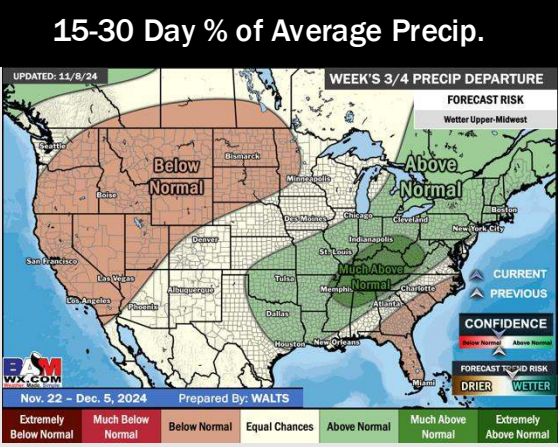
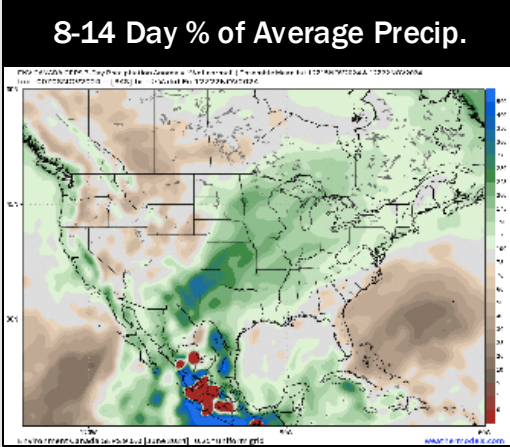
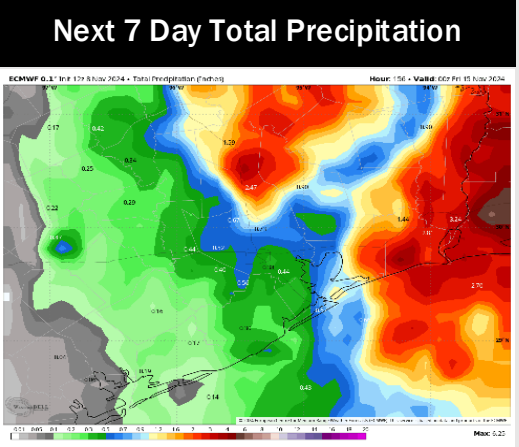
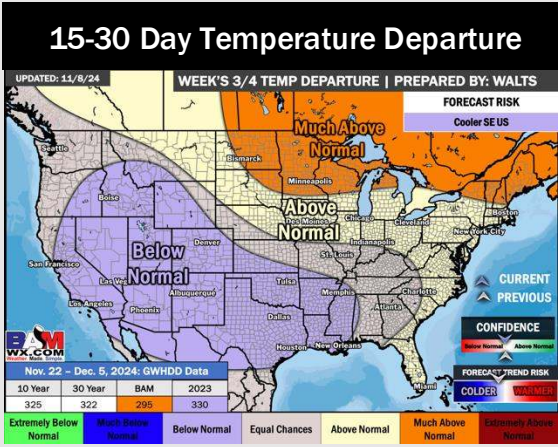
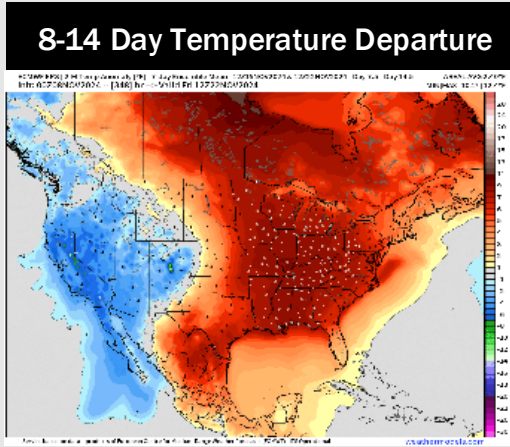
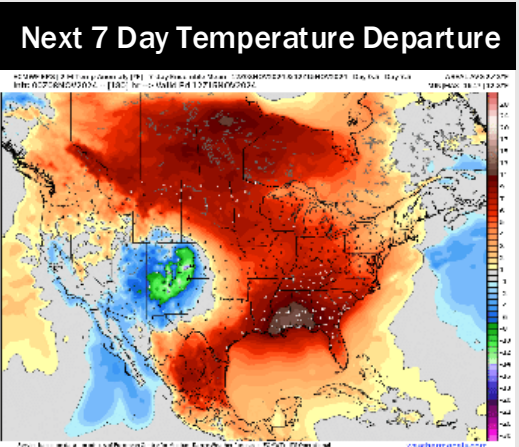
Wind Speed:
3 PM CT



High Temps
Monday



Houston Pilots: 11/9/24



- Temps are expected to be above normal for the week 1 timeframe. Favoring scattered rain chances to continue for the week 1 period.
- Above normal temperatures are favored for week 2. Favoring precipitation to be right around normal
- Below normal temperatures and above normal precipitation chances are expected for the weeks 3/4 timeframe.