

Houston Pilots Forecast Package



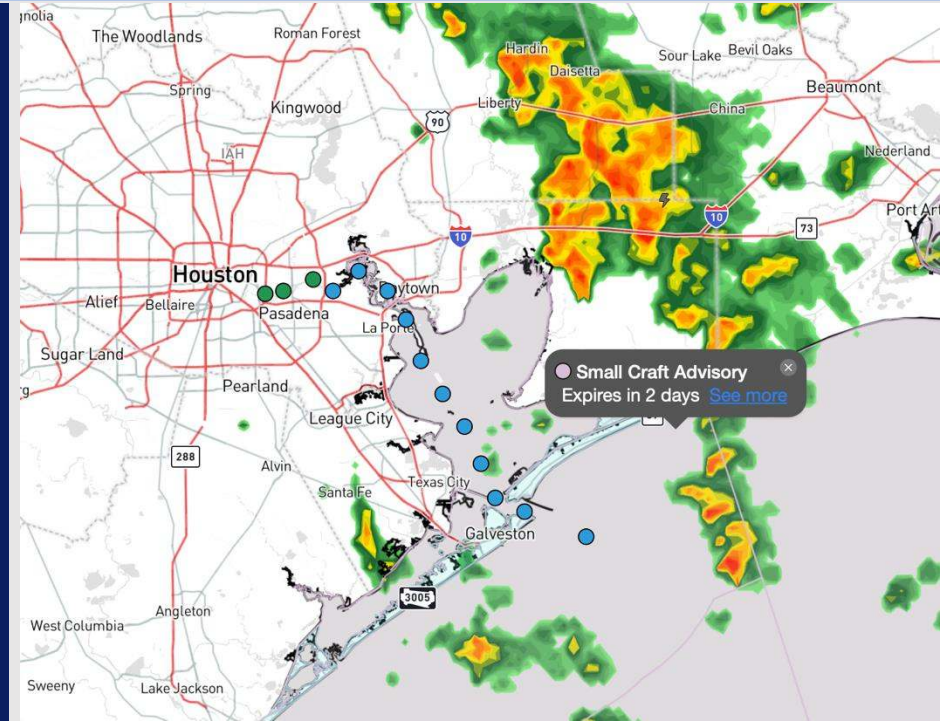
Updated: 9:15 PM CT

Monday, November 4, 2024

Forecaster: Tyler Riggles

Weather Headlines

- **Gusty winds of 25+ kts will be in play through early TUE AM.**
- **Wave heights will continue to increase through this morning, reaching peak heights of 6-8' by 9 AM CST. Zulu trigger currently in effect!**
- **Monitoring potential for tropical development and low-end impact chances over the next 7-10 Days**
- **Latest Video: [Zulu Port Condition Update](#)**



Current Radar: 9:05 PM CT



As always, please do not hesitate to reach out to us with any forecast questions via the chat option on Clarity or our on-call number, **(317)-560-8122** press 1 for forecast questions.

Houston Pilots Port Trigger Update

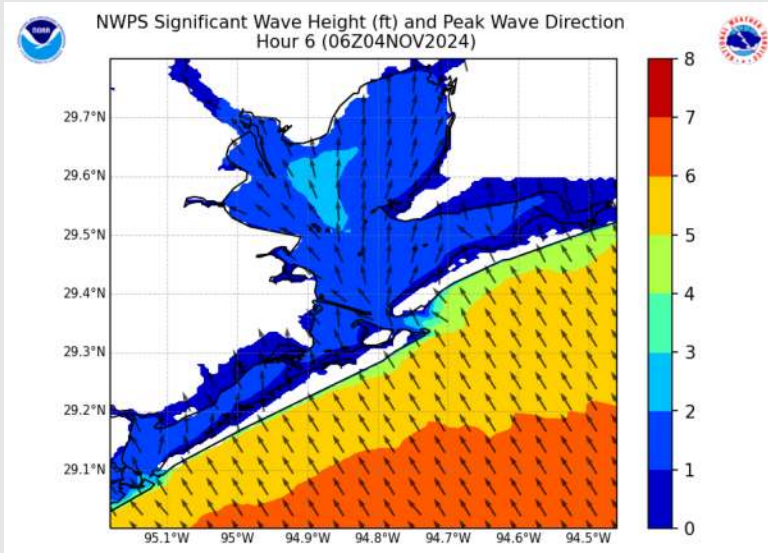


Port Condition	34 KTS+ Sustained Wind Trigger Reached at:	6 Foot Wave Trigger Reached at:	Time Remaining/Trigger Ends At:
Victor	---	---	---
Whiskey	---	---	---
X-Ray	---	---	---
Yankee	---	---	---
Zulu	---	Current	9 AM TUE

Port Condition	Trigger Definition	Trigger Reached?
Victor	Hurricane entering/developing in Gulf of Mexico that's a threat to the area	NO
Whiskey	72 hours prior to predicted sustained winds of 34+ KTS	NO
X-Ray	48 hours prior to predicted sustained winds of 34+ KTS or 6' wave height	YES
Yankee	24 hours prior to predicted sustained winds of 34+ KTS or 6' wave height	YES
Zulu	12 hours prior to predicted sustained winds of 34+ KTS or 6' wave height	YES

NOTES: Wave heights are expected to reach peak heights of 6-8' late MON AM and will linger at 6'+ through TUE AM.

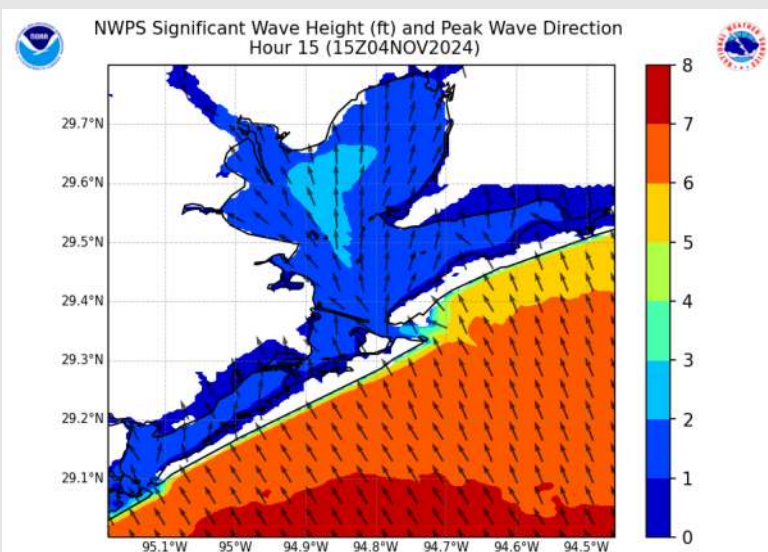
Wave Height Forecast Update



12 AM CT MON

Elevated wave heights near 5' – 7' have been reached at this time

Wave heights after 12AM MON are favored to continue to increase with peak wave heights approaching 6' – 8' by 6AM MON morning.



9 AM CT MON

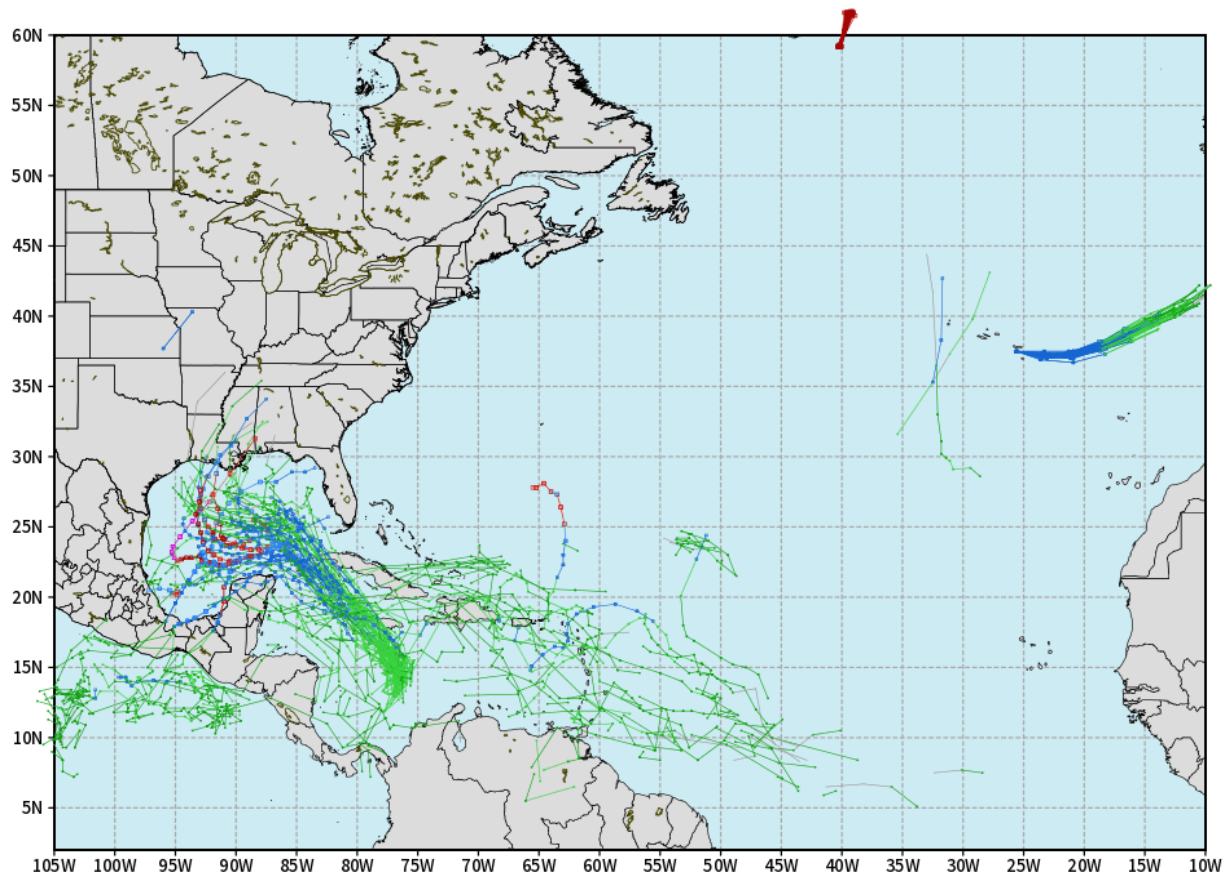
After 9AM MON wave heights will slowly decrease, dipping below 6' by 9AM TUE.

Houston Pilots Tropical Update

European Tropical Tracks - Next 10 Days

ECMWF ATLANTIC EPS Cyclone Locations --> Next [10-days]
INIT: 12Z03NOV2024 --> UNTIL 12Z13NOV2024

o-o ENSEMBLE MEAN
o-o 1000 - 1010 hPa
o-o 980 - 999 hPa
o-o 960 - 979 hPa
o-o 950 - 959 hPa
o-o < 950 hPa



weathermodels.com

Potential Tropical Cyclone 18 has been designated in the W Caribbean and is favored to become Tropical Storm Rafael by the end of the day Monday.

Confidence remains low in exact track, however potential into the C/W Gulf of Mexico will need to be monitored over the next 7 days.

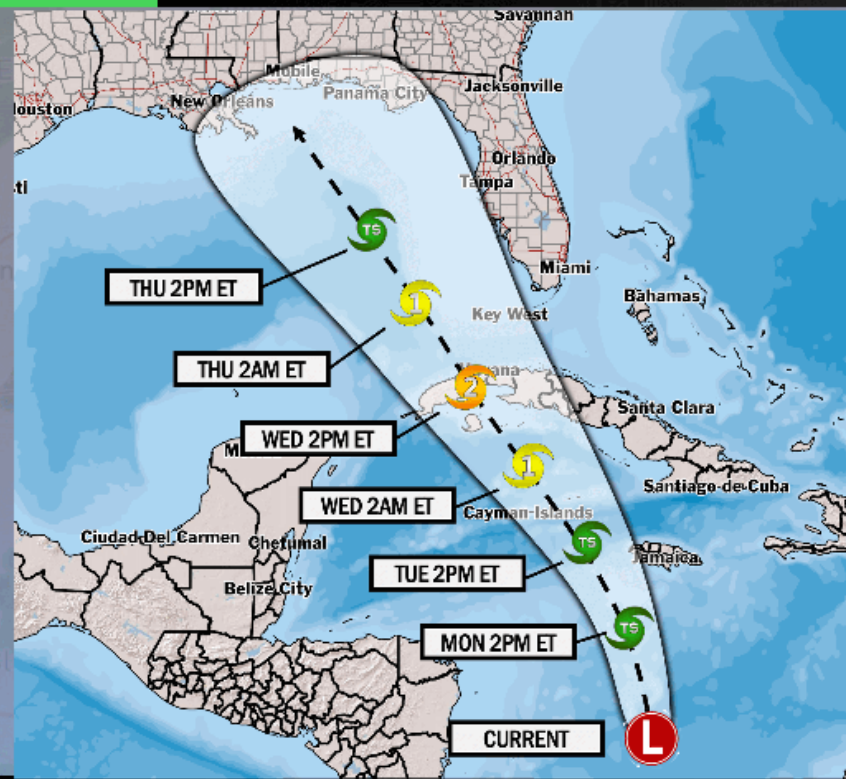
Direct impacts for HOU area over the next 7-10 days cannot be 100% ruled out.

Houston Pilots Tropical Update



Potential Tropical Cyclone 18

TROPICAL INSIGHT 4:30 PM ET Sunday, November 3rd, 2024 Forecaster: Lowry



TIMING: November 3rd – November 7th

FORECAST NOTES:

- ✓ An area of disorganized showers/storms is favored to become Tropical Storm Rafael by the end of the day Monday
- ✓ System is favored to reach Hurricane strength S of Cuba and is favored to weaken into the Gulf of Mexico
- ✓ Impacts for Gulf Coast will need to be monitored for heavy rainfall/tropical storm force winds.

Houston Pilots Extended Range Visibility Report



Thursday 11/7/24

Fog not favored for THU.

Forecast Confidence



Saturday 11/9/24

Fog not favored for SAT.

Forecast Confidence



Friday 11/8/24

Fog not favored for FRI.

Forecast Confidence



Chance for Fog

Thursday AM	Unlikely
Thursday PM	Unlikely
Friday AM	Unlikely
Friday PM	Unlikely
Saturday AM	Unlikely
Saturday PM	Unlikely

Houston Pilots Visibility Chart (miles)



Forecast Confidence



Visibility	Sun 10 pm	Sun 11 pm	Mon 12 am	Mon 1 am	Mon 2 am	Mon 3 am	Mon 4 am	Mon 5 am	Mon 6 am	Mon 7 am	Mon 8 am	Mon 9 am	Mon 10 am	Mon 11 am	Mon 12 pm	Mon 1 pm	Mon 2 pm	Mon 3 pm	Mon 4 pm	Mon 5 pm	Mon 6 pm	Mon 7 pm	Mon 8 pm	Mon 9 pm
Houston Pilots N - 610 Bridge	10	10	10	10	10	10	10	10	10	10	10	9	10	10	10	10	10	10	10	10	10	10	10	10
Houston Pilots M - Kinder 1	10	10	10	10	10	10	10	10	10	10	10	9	10	10	10	10	10	10	10	10	10	10	10	10
Houston Pilots L - Greens Bayou	10	10	10	10	10	10	10	10	10	10	10	10	10	10	10	10	10	10	10	10	10	10	10	10
Houston Pilots K - Shell Crude	10	10	10	10	10	10	10	10	10	10	10	10	10	10	10	10	10	10	10	10	10	10	10	10
Houston Pilots J - Lynchburg Ferries	10	10	10	10	10	10	10	10	10	10	10	10	10	10	10	10	10	10	10	10	10	10	10	10
Houston Pilots I - Exxon 3	10	10	10	10	10	10	10	10	10	10	10	10	10	10	10	10	10	10	10	10	10	10	10	10
Houston Pilots H - Morgans Point	10	10	10	10	10	10	10	10	10	10	10	10	10	10	10	10	10	10	10	10	10	10	10	10
Houston Pilots G - 75/76	10	10	10	10	10	10	10	10	10	10	10	10	10	10	10	9	7.9	10	9	7.9	9	9	9	9
Houston Pilots F - 63/64	10	10	10	10	10	10	10	10	10	10	10	10	10	10	10	9	7.9	10	9	7.9	9	9	9	9
Houston Pilots E - 51/52	10	10	10	10	10	10	10	10	10	10	10	10	10	10	9	7.9	7.9	9	7.9	6.9	9	9	9	9
Houston Pilots D - 37/38	10	10	10	10	10	10	10	10	10	10	10	10	10	10	7.9	7.9	6.9	9	7.9	6.9	9	9	9	9
Houston Pilots C - 25/26	10	10	10	10	10	10	10	10	10	10	10	10	10	10	7.9	7.9	6.9	7.9	7.9	6.9	9	9	9	9
Houston Pilots B - 11/12	9	10	10	10	10	10	10	10	10	10	10	10	10	10	7.9	6.9	6.9	7.9	7.9	6.9	9	9	9	9
Houston Pilots A - 1 & 2 Bravo	7.9	9	9	9	10	10	10	10	10	10	10	10	10	9	7.9	6.9	6.9	7.9	6.9	6.9	6.9	6.9	9	9

NOTE: This is automated data that may/may not agree with the official B.A.M. thinking that's found on the daily slides or special visibility report slides. This data should be used as a guide only

Houston Pilots Wind Chart



→ Sustained wind 10 Knots

→ Gusts 15 Knots

→ Wind from the SE

Example

10

15

↙

Wind	Sun 10 pm	Sun 11 pm	Mon 12 am	Mon 1 am	Mon 2 am	Mon 3 am	Mon 4 am	Mon 5 am	Mon 6 am	Mon 7 am	Mon 8 am	Mon 9 am	Mon 10 am	Mon 11 am	Mon 12 pm	Mon 1 pm	Mon 2 pm	Mon 3 pm	Mon 4 pm	Mon 5 pm	Mon 6 pm	Mon 7 pm	Mon 8 pm	Mon 9 pm
Houston Pilots N - 610 Bridge	15 ↑	15 ↑	15 ↑	14 ↑	14 ↑	14 ↑	13 ↑	13 ↑	13 ↑	13 ↑	15 ↑	16 ↑	16 ↑	17 ↑	17 ↑	17 ↑	18 ↑	18 ↑	18 ↑	18 ↑	17 ↑	15 ↑	15 ↑	16 ↑
Houston Pilots M - Kinder 1	15 ↑	15 ↑	15 ↑	14 ↑	14 ↑	14 ↑	13 ↑	13 ↑	13 ↑	13 ↑	15 ↑	16 ↑	17 ↑	17 ↑	17 ↑	17 ↑	18 ↑	18 ↑	18 ↑	18 ↑	17 ↑	15 ↑	15 ↑	16 ↑
Houston Pilots L - Greens Bayou	15 ↑	15 ↑	15 ↑	14 ↑	14 ↑	14 ↑	13 ↑	13 ↑	13 ↑	13 ↑	15 ↑	15 ↑	16 ↑	17 ↑	18 ↑	18 ↑	20 ↑	20 ↑	18 ↑	18 ↑	17 ↑	15 ↑	16 ↑	16 ↑
Houston Pilots K - Shell Crude	15 ↑	15 ↑	15 ↑	14 ↑	14 ↑	14 ↑	13 ↑	13 ↑	13 ↑	13 ↑	15 ↑	16 ↑	16 ↑	17 ↑	17 ↑	17 ↑	18 ↑	20 ↑	18 ↑	17 ↑	17 ↑	15 ↑	16 ↑	16 ↑
Houston Pilots J - Lynchburg Ferries	15 ↑	15 ↑	14 ↑	14 ↑	13 ↑	13 ↑	13 ↑	13 ↑	13 ↑	13 ↑	15 ↑	15 ↑	17 ↑	18 ↑	20 ↑	20 ↑	20 ↑	20 ↑	20 ↑	20 ↑	20 ↑	17 ↑	15 ↑	16 ↑
Houston Pilots I - Exxon 3	22 ↑	22 ↑	22 ↑	22 ↑	22 ↑	22 ↑	21 ↑	22 ↑	21 ↑	20 ↑	21 ↑	21 ↑	21 ↑	22 ↑	22 ↑	22 ↑	22 ↑	22 ↑	21 ↑	22 ↑	22 ↑	21 ↑	21 ↑	22 ↑
Houston Pilots H - Morgans Point	22 ↑	22 ↑	22 ↑	22 ↑	22 ↑	22 ↑	21 ↑	21 ↑	21 ↑	20 ↑	21 ↑	21 ↑	21 ↑	22 ↑	22 ↑	21 ↑	22 ↑	22 ↑	21 ↑	22 ↑	22 ↑	21 ↑	21 ↑	22 ↑
Houston Pilots G - 75/76	22 ↑	24 ↑	24 ↑	23 ↑	24 ↑	24 ↑	23 ↑	24 ↑	23 ↑	22 ↑	23 ↑	23 ↑	22 ↑	23 ↑	23 ↑	22 ↑	23 ↑	23 ↑	22 ↑	23 ↑	22 ↑	22 ↑	22 ↑	23 ↑
Houston Pilots F - 63/64	22 ↑	24 ↑	24 ↑	23 ↑	24 ↑	24 ↑	23 ↑	24 ↑	24 ↑	23 ↑	24 ↑	24 ↑	22 ↑	23 ↑	23 ↑	22 ↑	23 ↑	24 ↑	23 ↑	24 ↑	23 ↑	22 ↑	21 ↑	22 ↑
Houston Pilots E - 51/52	22 ↑	23 ↑	23 ↑	23 ↑	24 ↑	24 ↑	23 ↑	24 ↑	24 ↑	22 ↑	23 ↑	23 ↑	22 ↑	23 ↑	22 ↑	22 ↑	23 ↑	24 ↑	24 ↑	24 ↑	22 ↑	22 ↑	22 ↑	22 ↑
Houston Pilots D - 37/38	22 ↑	22 ↑	23 ↑	22 ↑	23 ↑	23 ↑	23 ↑	23 ↑	23 ↑	22 ↑	23 ↑	23 ↑	22 ↑	23 ↑	22 ↑	22 ↑	22 ↑	23 ↑	23 ↑	23 ↑	23 ↑	22 ↑	22 ↑	22 ↑
Houston Pilots C - 25/26	21 ↑	22 ↑	22 ↑	22 ↑	22 ↑	22 ↑	22 ↑	22 ↑	22 ↑	22 ↑	22 ↑	23 ↑	22 ↑	23 ↑	22 ↑	22 ↑	22 ↑	22 ↑	22 ↑	22 ↑	22 ↑	21 ↑	21 ↑	21 ↑
Houston Pilots B - 11/12	18 ↑	20 ↑	20 ↑	20 ↑	20 ↑	20 ↑	20 ↑	21 ↑	21 ↑	20 ↑	21 ↑	22 ↑	21 ↑	21 ↑	21 ↑	20 ↑	20 ↑	21 ↑	20 ↑	20 ↑	20 ↑	18 ↑	18 ↑	20 ↑
Houston Pilots A - 1 & 2 Bravo	22 ↑	22 ↑	23 ↑	23 ↑	24 ↑	24 ↑	24 ↑	24 ↑	24 ↑	23 ↑	24 ↑	24 ↑	23 ↑	22 ↑	22 ↑	21 ↑	22 ↑	22 ↑	22 ↑	22 ↑	22 ↑	22 ↑	21 ↑	22 ↑

NOTE: This is automated data that may/may not agree with the official BAM thinking that's found on the daily slides. This data should be used as a guide only.

Forecast Discussion

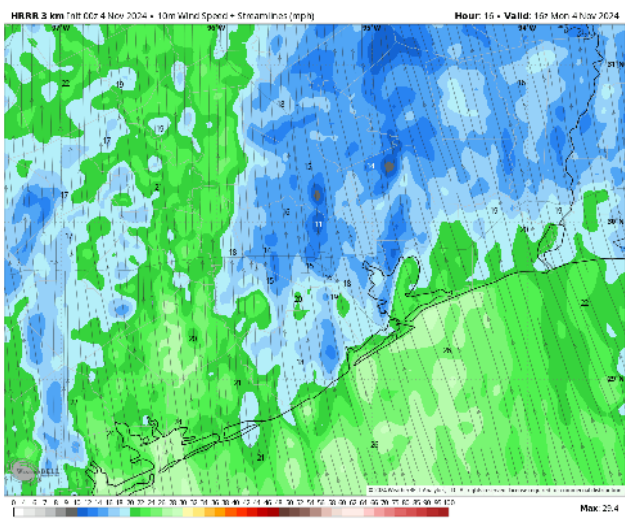
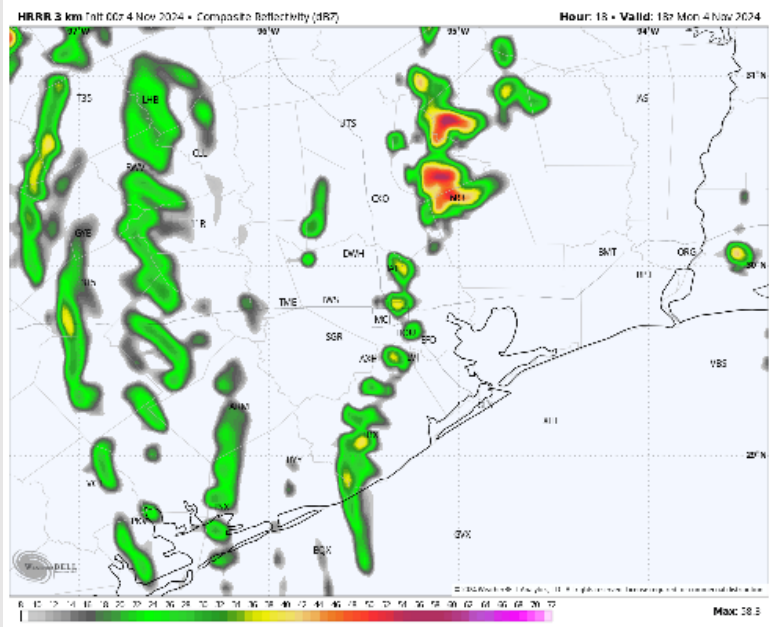
Precip: Scattered (40-50%) showers will be possible throughout the day.

Wind: Winds will be out of the SE throughout the day. **N of Morgan's Point:** Winds will be at 12 – 18 kts throughout the day. **S of Morgan's Point:** Winds will be 20 – 25 kts for the entire day. **Wind gusts of 25 – 30 kts will be possible for all stations today, with higher gusts of 33 – 38 kts from 9AM - 5 PM.**

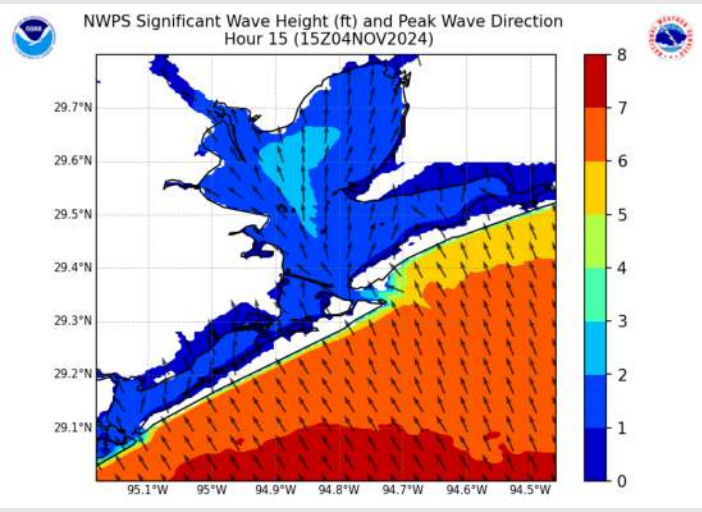
High Temps: **N of Morgan's Point:** Mid 80s F. **S of Morgan's Point:** Lower 80s F.

Visibility: Visibilities may be reduced in heavy downpours. Otherwise, no fog concerns for any Stations

Precip Image: 12 PM CT



**Wind Speed:
10 AM CT**



**Wave Heights
9 AM CT**

Houston Pilots: TUE. 11/5/2024



Forecast Discussion

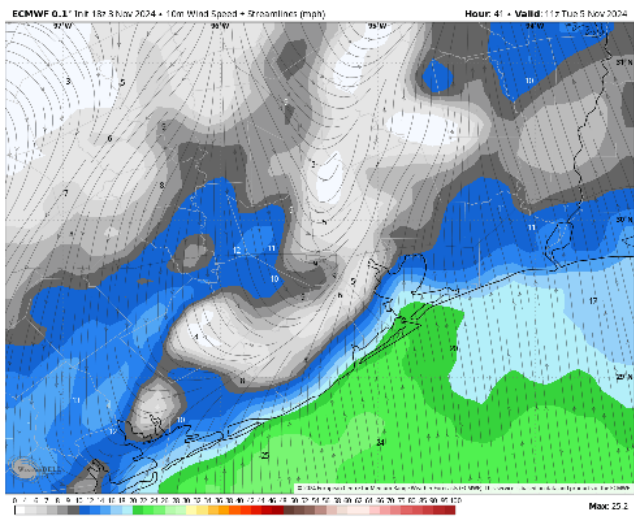
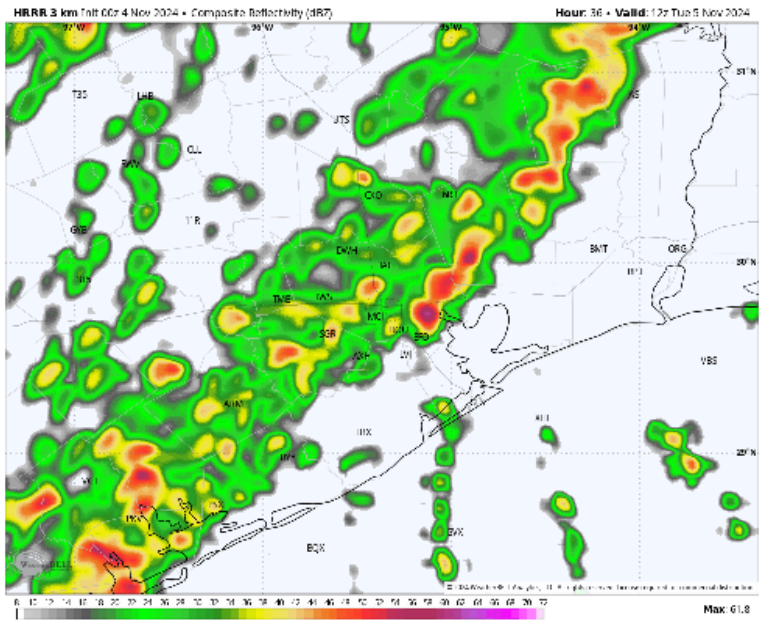
Precip: Widespread showers in play for all Stations between 3 AM – 2 PM. Dry conditions favored after 2 PM.

Wind: Winds will be out of the SE through 6 AM, becoming variable in direction through 12PM. Winds are expected to settle out of the N/NW after 12 PM. **N of Morgan's Point:** Winds will start the day at 12-16 kts but will decrease to 3-8 kts by 6 AM. **S of Morgan's Point:** Winds will begin the day at 18-22 kts but will decrease to 8-13 kts by 10 AM. Winds will then decrease further to 4-9 kts by 12 PM. **Wind gusts of 20-25 kts in play for all Stations through 5 AM.**

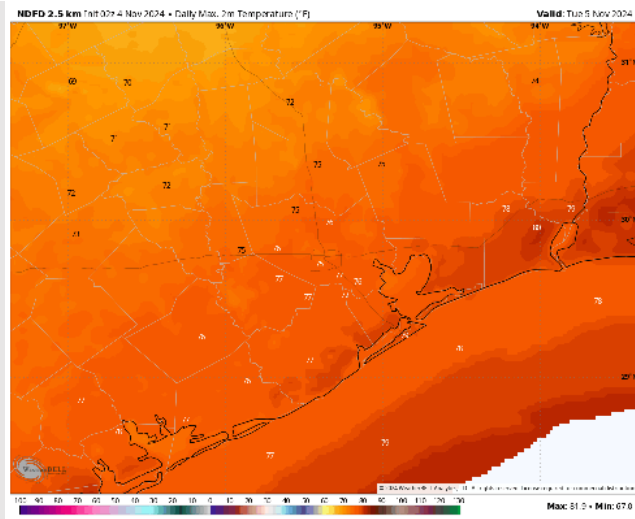
High Temps: **N of Morgan's Point:** Mid 70s F. **S of Morgan's Point:** Mid to Upper 70s F

Visibility: Visibilities may be reduced in heavy downpours. Otherwise, no fog concerns for any Stations.

Precip Image: 6 AM CT



Wind Speed:
5 AM CT



High Temps
Tuesday

Houston Pilots: WED. 11/6/2024



Forecast Discussion

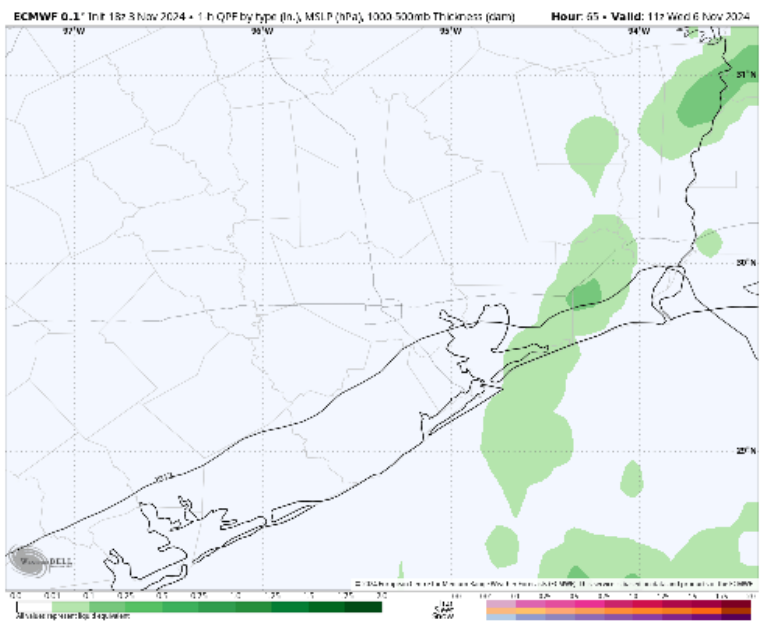
Precip: Hit/miss showers (30%) in play for Stations S of Morgan's Point through 9 AM.

Wind: Winds will be out of the N/NNE through 9 AM, rotating clockwise out of E/ESE after that time. **N of Morgan's Point:** Winds will be at 3-8 kts throughout the day. **S of Morgan's Point:** Winds will be at 7-12 kts throughout the day.

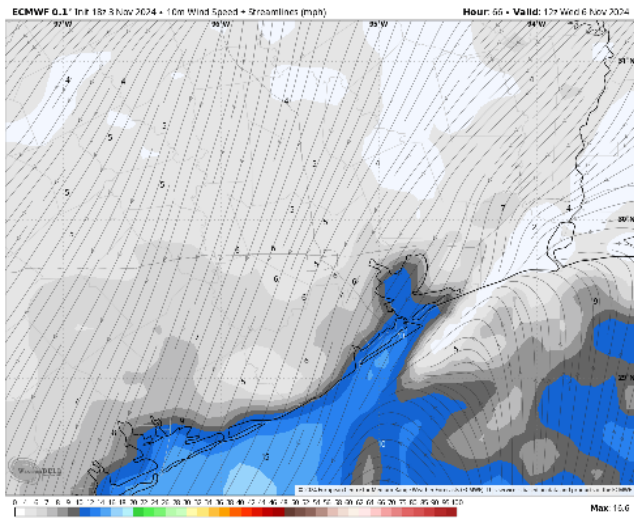
High Temps: **N of Morgan's Point:** Low 80s F. **S of Morgan's Point:** Mid to upper 70s F.

Visibility: No fog concerns for any Stations on Wednesday.

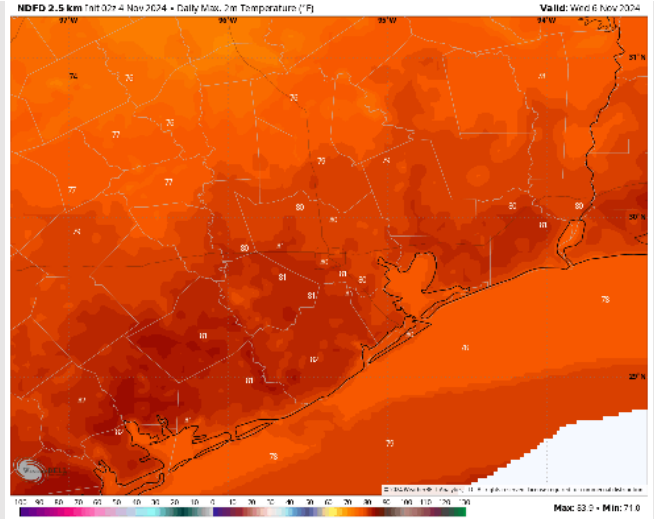
Precip Image: 5 AM CT



Wind Speed
6 AM CT



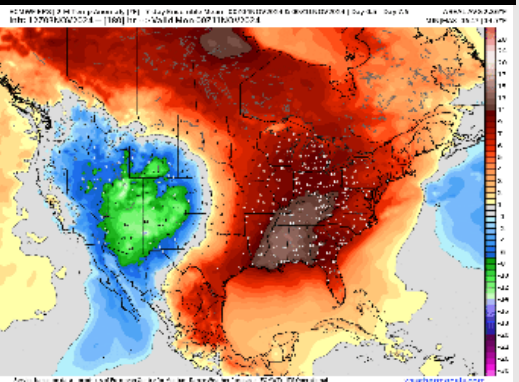
High Temps
Wednesday



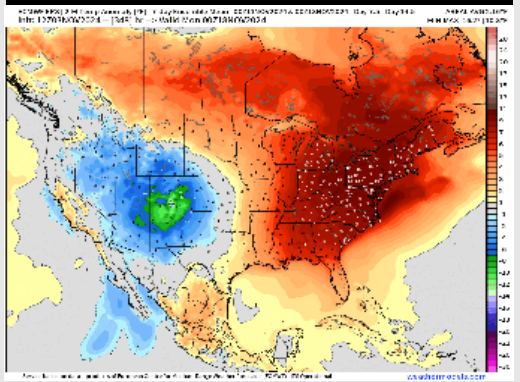
Houston Pilots: 11/4/24



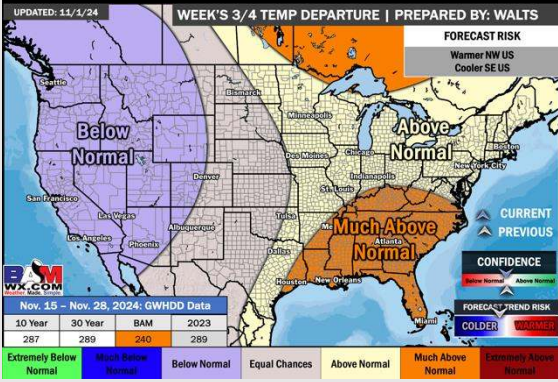
Next 7 Day Temperature Departure



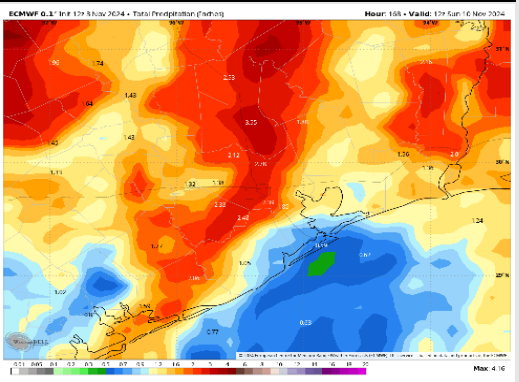
8-14 Day Temperature Departure



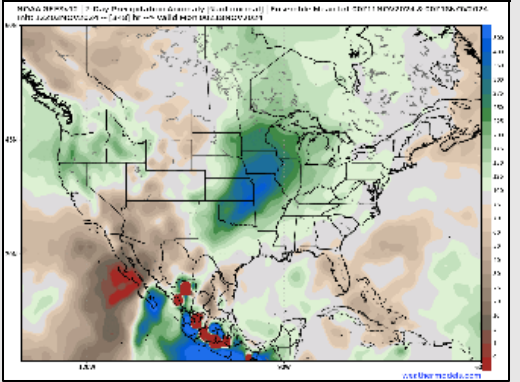
15-30 Day Temperature Departure



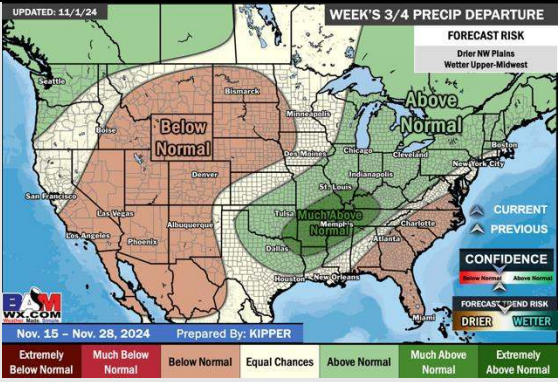
Next 7 Day Total Precipitation



8-14 Day % of Average Precip.



15-30 Day % of Average Precip.



- Temps are expected to be above normal for the week 1 timeframe. Favoring scattered rain chances to continue for the week 1 period.
- Above normal temperatures are favored for week 2. Favoring precipitation to be right around normal depending on the track of the upcoming tropical system.
- Above normal temperatures and near normal precipitation chances are expected for the weeks ¾ timeframe.