

Houston Pilots Forecast Package



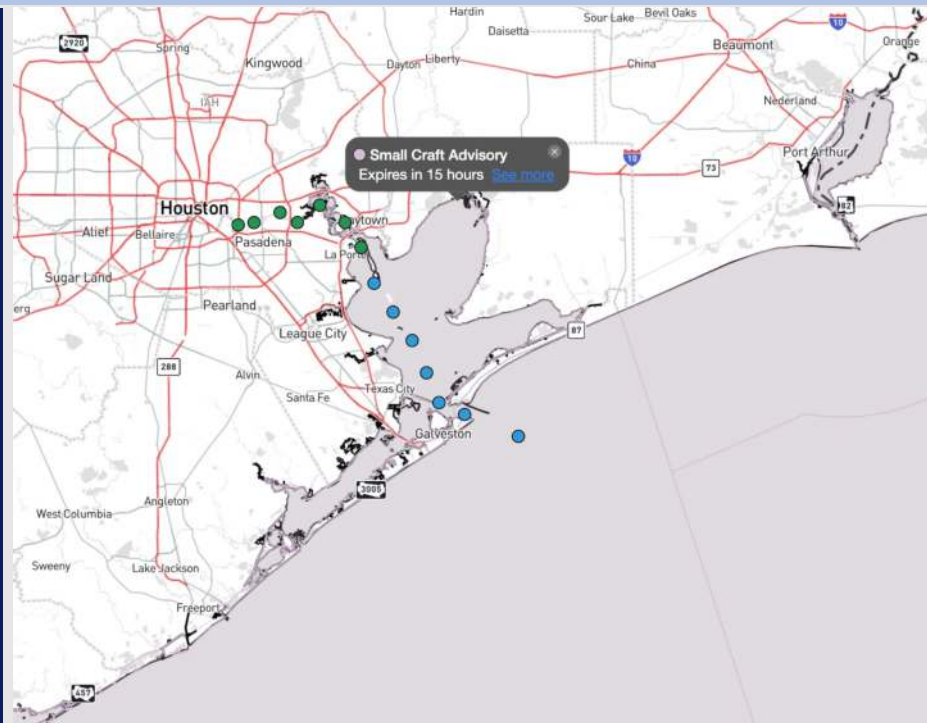
Updated: 11:55 PM CT

Wednesday, November 20, 2024

Forecaster: John Kemper

Weather Headlines

- Winds are expected to continue to increase this AM, keeping gusts in the 30 – 40 kts range throughout the PM.
- Dry conditions are favored over the next 72 hours.
- Despite winds, Max Wave Heights of 4'+ are not favored for stations in the next 24 hours.



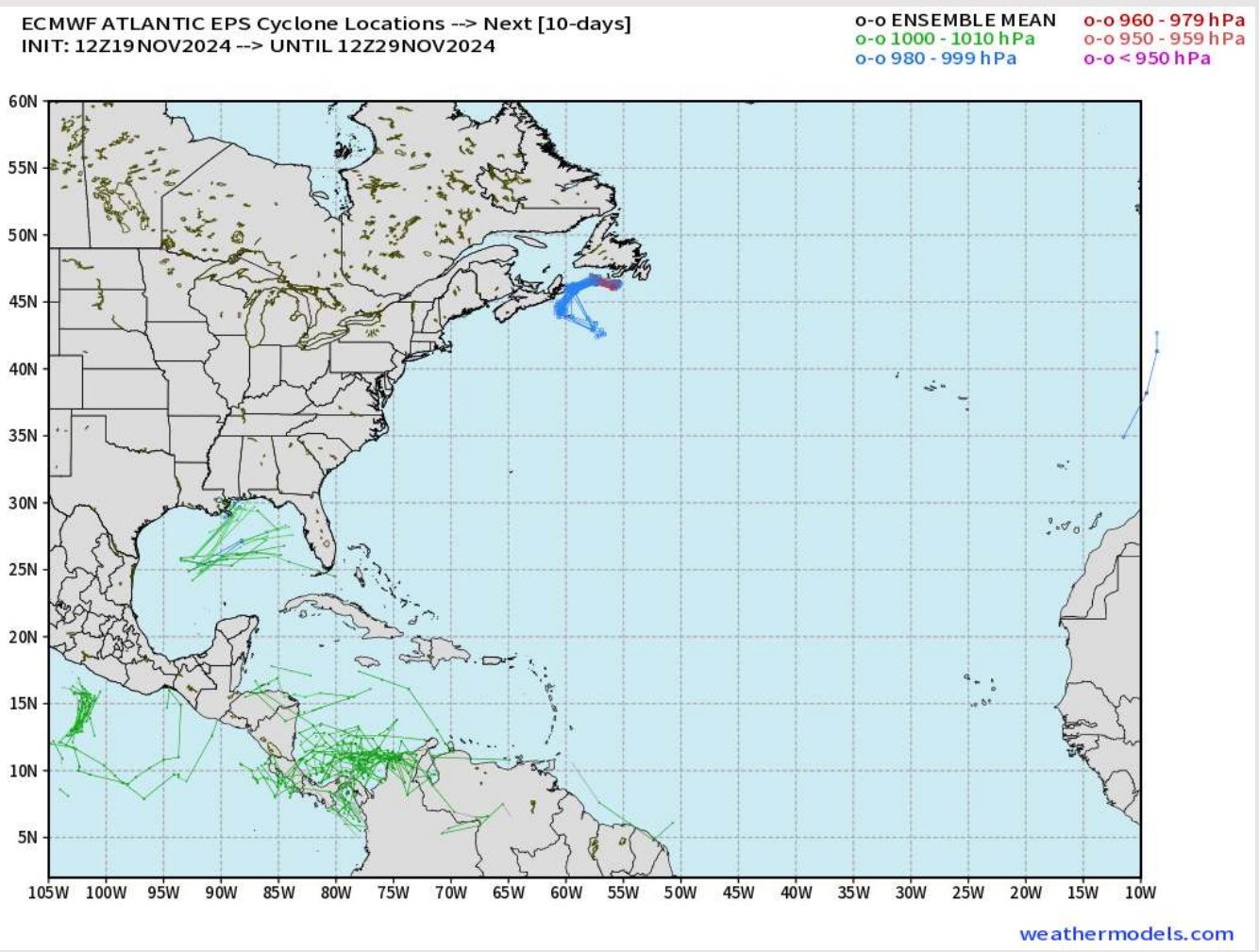
Current Radar: 11:50 PM CT



As always, please do not hesitate to reach out to us with any forecast questions via the chat option on Clarity or our on-call number, **(317)-560-8122** press **1** for forecast questions.

Houston Pilots Tropical Update

European Ensemble Cyclone Tracks



Not favoring any tropical impacts for Houston / Galveston Bay over the next 10 days.

Tropical Updates will end on / by November 30th due to end of Season / Lack of Activity.

Houston Pilots Extended Range Visibility Report



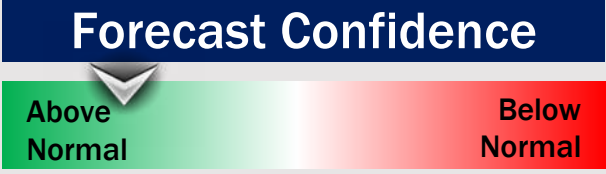
Saturday 11/23/24

Fog not favored for SAT.



Sunday 11/24/24

Fog not favored for SUN.



Monday 11/25/24

Fog not favored for MON.



Chance for Fog

Saturday AM	Unlikely
Saturday PM	Unlikely
Sunday AM	Unlikely
Sunday PM	Unlikely
Monday AM	Unlikely
Monday PM	Unlikely

Houston Pilots Visibility Chart (miles)



Forecast Confidence



Visibility	Wed 1 am	Wed 2 am	Wed 3 am	Wed 4 am	Wed 5 am	Wed 6 am	Wed 7 am	Wed 8 am	Wed 9 am	Wed 10 am	Wed 11 am	Wed 12 pm	Wed 1 pm	Wed 2 pm	Wed 3 pm	Wed 4 pm	Wed 5 pm	Wed 6 pm	Wed 7 pm	Wed 8 pm	Wed 9 pm	Wed 10 pm	Wed 11 pm	Thu 12 am
Houston Pilots N - 610 Bridge	10	10	10	10	10	10	10	10	10	10	10	10	10	10	10	10	10	10	10	10	10	10	10	10
Houston Pilots M - Kinder 1	10	10	10	10	10	10	10	10	10	10	10	10	10	10	10	10	10	10	10	10	10	10	10	10
Houston Pilots L - Greens Bayou	10	10	10	10	10	10	10	10	10	10	10	10	10	10	10	10	10	10	10	10	10	10	10	10
Houston Pilots K - Shell Crude	10	10	10	10	10	10	10	10	10	10	10	10	10	10	10	10	10	10	10	10	10	10	10	10
Houston Pilots J - Lynchburg Ferries	10	10	10	10	10	10	10	10	10	10	10	10	10	10	10	10	10	10	10	10	10	10	10	10
Houston Pilots I - Exxon 3	10	10	10	10	10	10	10	10	10	10	10	10	10	10	10	10	10	10	10	10	10	10	10	10
Houston Pilots H - Morgans Point	10	10	10	10	10	10	10	10	10	10	10	10	10	10	10	10	10	10	10	10	10	10	10	10
Houston Pilots G - 75/76	10	10	10	10	10	10	10	10	10	10	10	10	10	10	10	10	10	10	10	10	10	10	10	10
Houston Pilots F - 63/64	10	10	10	10	10	10	10	10	10	10	10	10	10	10	10	10	10	10	10	10	10	10	10	10
Houston Pilots E - 51/52	10	10	10	10	10	10	10	10	10	10	10	10	10	10	10	10	10	10	10	10	10	10	10	10
Houston Pilots D - 37/38	10	10	10	10	10	10	10	10	10	10	10	10	10	10	10	10	10	10	10	10	10	10	10	10
Houston Pilots C - 25/26	10	10	10	10	10	10	10	10	10	10	10	10	10	10	10	10	10	10	10	10	10	10	10	10
Houston Pilots B - 11/12	10	10	10	10	10	10	10	10	10	10	10	10	10	10	10	10	10	10	10	10	10	10	10	10
Houston Pilots A - 1 & 2 Bravo	10	10	10	10	10	10	10	10	10	10	10	10	10	10	10	10	10	10	10	10	10	10	10	10

NOTE: This is automated data that may/may not agree with the official B.A.M. thinking that's found on the daily slides or special visibility report slides. This data should be used as a guide only

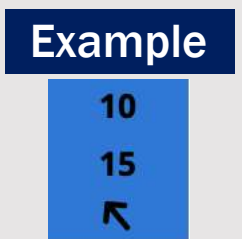
Houston Pilots Wind Chart



Sustained wind 10 Knots

Gusts 15 Knots

Wind from the SE



Wind	Wed 1 am	Wed 2 am	Wed 3 am	Wed 4 am	Wed 5 am	Wed 6 am	Wed 7 am	Wed 8 am	Wed 9 am	Wed 10 am	Wed 11 am	Wed 12 pm	Wed 1 pm	Wed 2 pm	Wed 3 pm	Wed 4 pm	Wed 5 pm	Wed 6 pm	Wed 7 pm	Wed 8 pm	Wed 9 pm	Wed 10 pm	Wed 11 pm	Thu 12 am
Houston Pilots N - 610 Bridge	7 15 ↘	8 16 ↘	9 18 ↘	10 20 ↘	10 22 ↘	13 23 ↘	13 23 ↘	13 25 ↘	13 24 ↘	13 25 ↘	14 26 ↘	14 28 ↘	13 26 ↘	13 26 ↘	13 26 ↘	13 24 ↘	12 23 ↘	10 20 ↘	8 16 ↘	7 15 ↘	7 14 ↘	6 13 ↘	6 13 ↘	6 12 ↘
Houston Pilots M - Kinder 1	7 15 ↘	8 16 ↘	9 18 ↘	10 20 ↘	10 22 ↘	13 23 ↘	13 23 ↘	13 25 ↘	13 24 ↘	14 25 ↘	14 26 ↘	14 28 ↘	13 26 ↘	13 26 ↘	13 26 ↘	13 24 ↘	12 22 ↘	10 18 ↘	8 16 ↘	8 15 ↘	7 14 ↘	6 13 ↘	6 13 ↘	6 12 ↘
Houston Pilots L - Greens Bayou	7 15 ↘	8 16 ↘	9 18 ↘	10 21 ↘	10 22 ↘	12 24 ↘	13 24 ↘	13 25 ↘	13 25 ↘	13 26 ↘	15 26 ↘	15 28 ↘	14 26 ↘	14 28 ↘	13 26 ↘	13 24 ↘	12 22 ↘	10 18 ↘	8 16 ↘	8 15 ↘	7 14 ↘	6 13 ↘	6 13 ↘	6 12 ↘
Houston Pilots K - Shell Crude	7 15 ↘	8 16 ↘	9 18 ↘	10 21 ↘	10 22 ↘	12 24 ↘	13 25 ↘	13 26 ↘	13 25 ↘	14 26 ↘	15 26 ↘	15 28 ↘	14 26 ↘	14 28 ↘	13 26 ↘	13 24 ↘	12 22 ↘	10 18 ↘	8 16 ↘	8 15 ↘	7 14 ↘	6 13 ↘	6 13 ↘	6 12 ↘
Houston Pilots J - Lynchburg Ferries	6 15 ↘	8 16 ↘	8 18 ↘	9 21 ↘	10 22 ↘	12 24 ↘	12 24 ↘	13 26 ↘	13 25 ↘	14 25 ↘	15 26 ↘	15 28 ↘	15 26 ↘	15 26 ↘	14 26 ↘	13 24 ↘	12 22 ↘	10 18 ↘	8 16 ↘	7 15 ↘	6 14 ↘	6 13 ↘	6 12 ↘	6 12 ↘
Houston Pilots I - Exxon 3	10 16 ↘	13 17 ↘	14 20 ↘	15 22 ↘	17 23 ↘	17 24 ↘	17 25 ↘	17 26 ↘	17 25 ↘	17 26 ↘	17 26 ↘	17 26 ↘	16 26 ↘	16 26 ↘	15 25 ↘	15 23 ↘	15 22 ↘	13 20 ↘	12 17 ↘	10 16 ↘	10 16 ↘	10 15 ↘	10 15 ↘	10 14 ↘
Houston Pilots H - Morgans Point	10 16 ↘	13 17 ↘	14 20 ↘	15 22 ↘	16 23 ↘	17 24 ↘	17 25 ↘	17 26 ↘	17 25 ↘	17 26 ↘	17 26 ↘	17 26 ↘	16 25 ↘	16 26 ↘	15 25 ↘	15 24 ↘	15 22 ↘	14 21 ↘	12 18 ↘	12 16 ↘	10 16 ↘	10 15 ↘	10 15 ↘	10 14 ↘
Houston Pilots G - 75/76	12 17 ↘	14 20 ↘	15 23 ↘	17 24 ↘	20 26 ↘	20 29 ↘	21 29 ↘	21 30 ↘	20 29 ↘	20 29 ↘	20 30 ↘	18 30 ↘	17 28 ↘	17 28 ↘	17 26 ↘	17 26 ↘	16 25 ↘	15 23 ↘	14 20 ↘	13 18 ↘	13 18 ↘	13 18 ↘	13 17 ↘	13 17 ↘
Houston Pilots F - 63/64	12 17 ↘	14 20 ↘	15 23 ↘	17 24 ↘	20 26 ↘	21 29 ↘	21 29 ↘	22 30 ↘	21 30 ↘	20 30 ↘	20 30 ↘	18 30 ↘	17 28 ↘	17 29 ↘	17 26 ↘	17 26 ↘	16 25 ↘	15 23 ↘	14 20 ↘	14 18 ↘	14 18 ↘	13 18 ↘	13 17 ↘	13 17 ↘
Houston Pilots E - 51/52	10 17 ↘	13 20 ↘	15 23 ↘	17 24 ↘	20 26 ↘	21 29 ↘	22 30 ↘	22 31 ↘	22 31 ↘	20 31 ↘	20 31 ↘	20 30 ↘	17 28 ↘	18 29 ↘	18 26 ↘	18 26 ↘	17 25 ↘	16 24 ↘	15 21 ↘	15 21 ↘	15 20 ↘	14 20 ↘	14 18 ↘	13 17 ↘
Houston Pilots D - 37/38	10 17 ↘	13 20 ↘	15 23 ↘	17 24 ↘	20 28 ↘	21 30 ↘	22 30 ↘	22 31 ↘	22 31 ↘	21 31 ↘	20 31 ↘	20 30 ↘	18 28 ↘	20 29 ↘	20 28 ↘	17 26 ↘	17 25 ↘	16 24 ↘	15 22 ↘	15 22 ↘	15 21 ↘	15 20 ↘	14 20 ↘	14 18 ↘
Houston Pilots C - 25/26	10 17 ↘	13 20 ↘	15 23 ↘	17 24 ↘	20 28 ↘	21 30 ↘	22 31 ↘	22 32 ↘	22 32 ↘	21 31 ↘	20 31 ↘	20 30 ↘	18 28 ↘	18 29 ↘	18 28 ↘	17 26 ↘	17 25 ↘	16 24 ↘	15 23 ↘	15 23 ↘	15 22 ↘	15 21 ↘	15 21 ↘	14 20 ↘
Houston Pilots B - 11/12	9 17 ↘	12 20 ↘	14 23 ↘	15 24 ↘	17 28 ↘	20 30 ↘	21 30 ↘	21 31 ↘	21 32 ↘	20 31 ↘	20 31 ↘	20 30 ↘	17 26 ↘	18 29 ↘	17 26 ↘	17 25 ↘	16 25 ↘	15 24 ↘	15 23 ↘	15 23 ↘	15 23 ↘	14 22 ↘	14 21 ↘	13 20 ↘
Houston Pilots A - 1 & 2 Bravo	13 18 ↘	15 22 ↘	17 24 ↘	20 28 ↘	21 30 ↘	22 32 ↘	23 33 ↘	24 35 ↘	24 35 ↘	22 32 ↘	22 32 ↘	21 32 ↘	20 29 ↘	20 29 ↘	20 29 ↘	20 29 ↘	20 29 ↘	18 26 ↘	17 25 ↘	17 24 ↘	17 24 ↘	17 23 ↘	16 23 ↘	16 22 ↘

NOTE: This is automated data that may/may not agree with the official BAM thinking that's found on the daily slides. This data should be used as a guide only.

Forecast Discussion

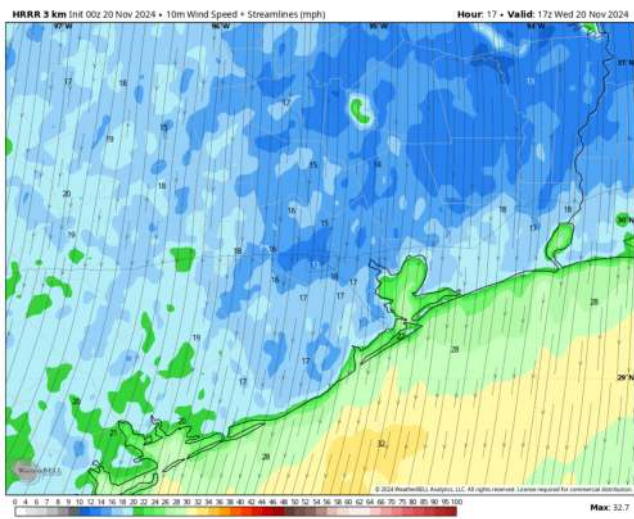
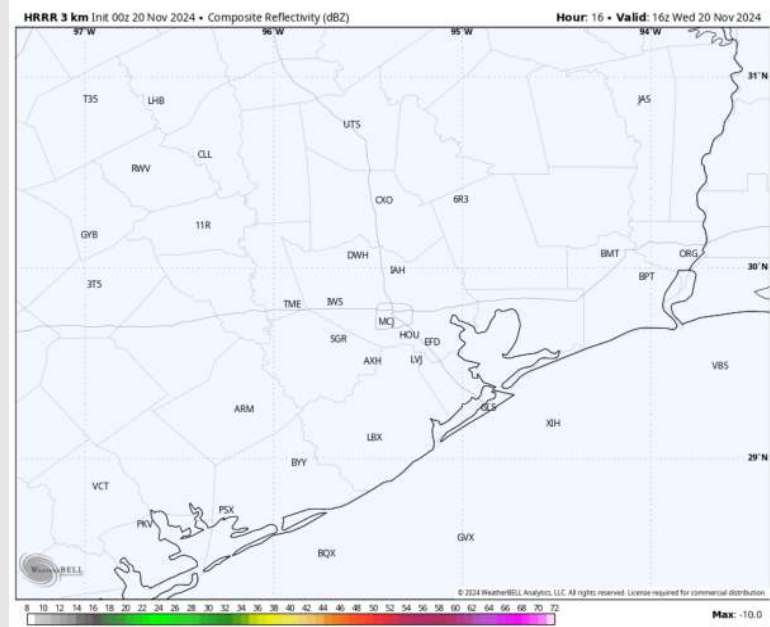
Precip: Favoring dry conditions for today.

Wind: Winds will be out of the N throughout the day. **N of Morgan's Point:** Winds at 10 – 15 kts through the day. **S of Morgan's Point:** Winds will gradually increase to 20 – 25 kts from 1AM through 6AM, before steadily increasing to 25 – 28 kts from 6AM through 5PM. Winds will back down towards 18 - 23kts after this point for the rest of the evening. **Wind gusts of 30 – 40 kts will be possible for Stations S. of Morgan's Point between 2 AM - 5 PM.**

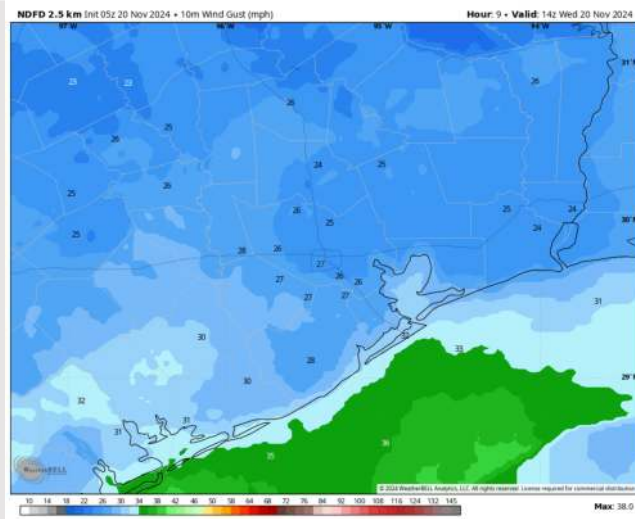
High Temps: **N of Morgan's Point:** Upper 60s / Near 70 F. **S of Morgan's Point:** Upper 60s / Near 70 F.

Visibility: No visibility concerns for today.

Precip Image: 10 AM CT



Wind Speed:
11 AM CT



Wind Gusts:
8 AM CT

Houston Pilots: THU. 11/21/2024



Forecast Discussion

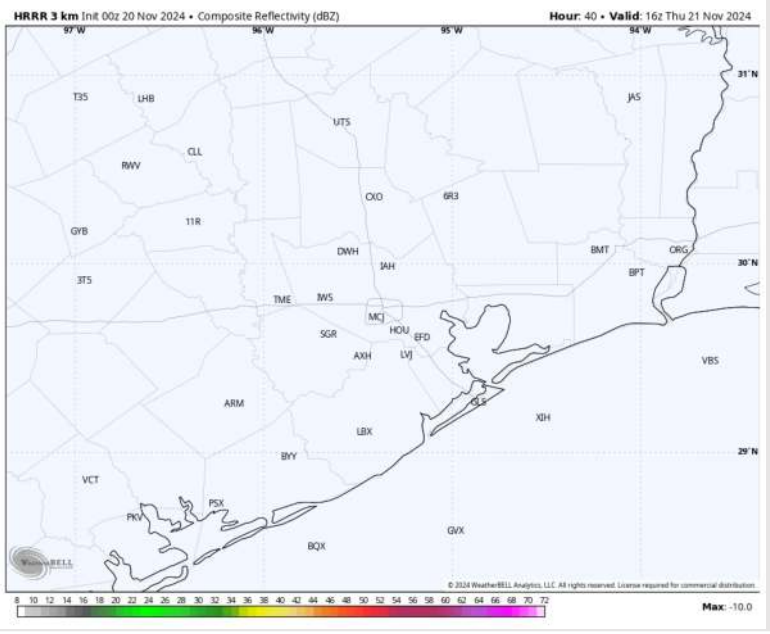
Precip: Favoring dry conditions for Thursday.

Wind: Winds will be out of the N/NE through 11 AM, slightly shifting counterclockwise to out of the NW from 11AM – 4PM before holding steady out of the WNW for the rest of Thursday. **N of Morgan's Point:** Winds will be at 2 – 7 kts throughout the day. **S of Morgan's Point:** Winds initially at 8 - 13 kts will gradually decrease through the morning, settling at 3 – 8 kts by 11 AM and remaining there for the rest of the day.

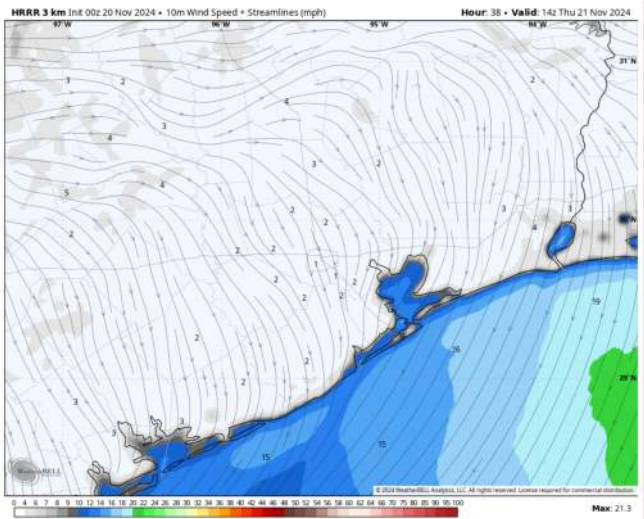
High Temps: **N of Morgan's Point:** Near 70 F. **S of Morgan's Point:** Upper 60s F / Near 70 F.

Visibility: No visibility concerns for Thursday.

Precip Image: 10 AM CT

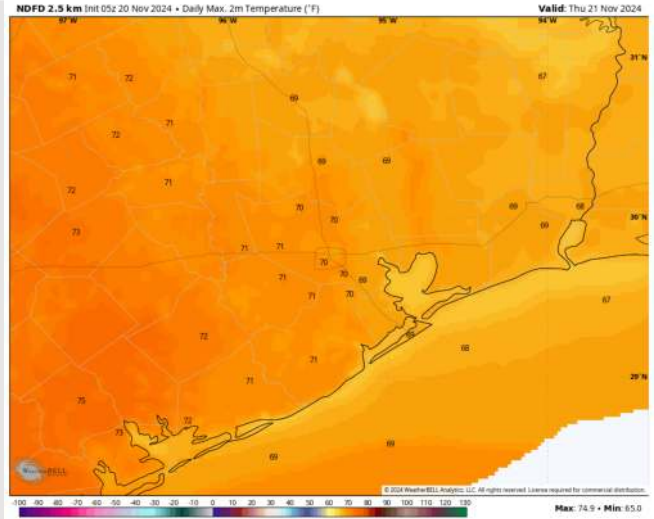


Wind Speed 8 AM CT



Wind Speed
8 AM CT

High Temps Thursday



High Temps
Thursday

Houston Pilots: FRI. 11/22/2024



Forecast Discussion

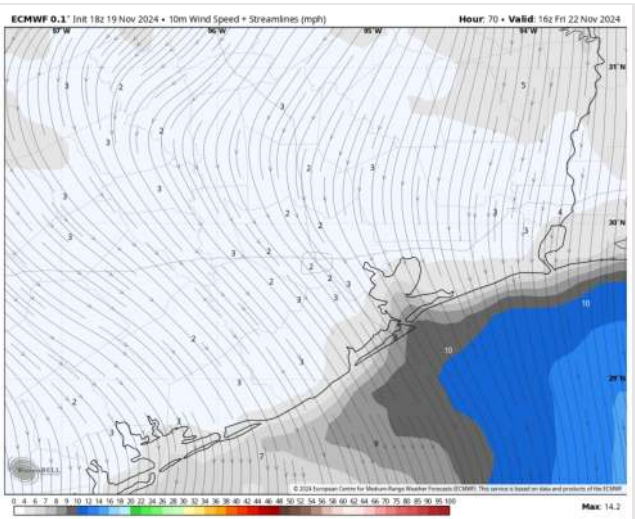
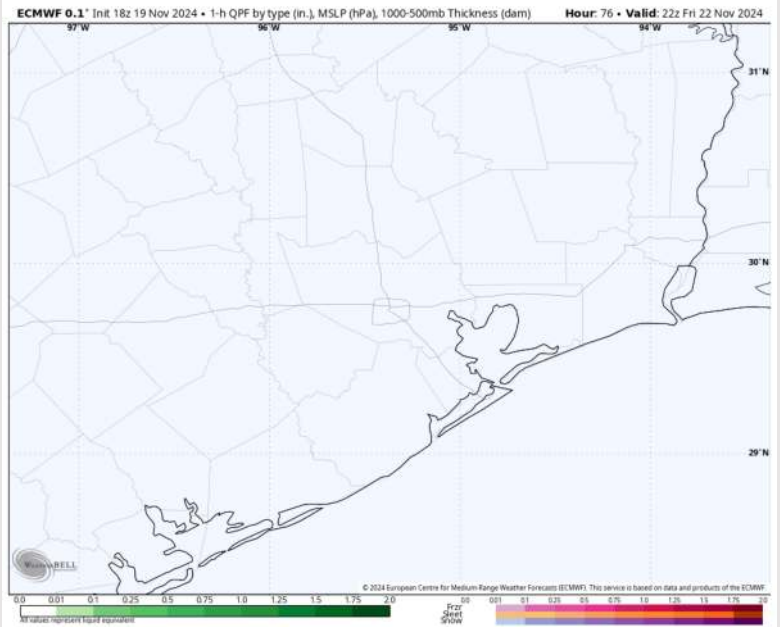
Precip: Favoring dry conditions for Friday.

Wind: Winds will be out of the N / NNW through all of Friday. **N of Morgan's Point:** Winds will be at 3 - 7 kts throughout Friday. **S of Morgan's Point:** Winds will start at 5 - 10 kts through 2PM before weakening to 3 - 7kts for the remainder of Friday.

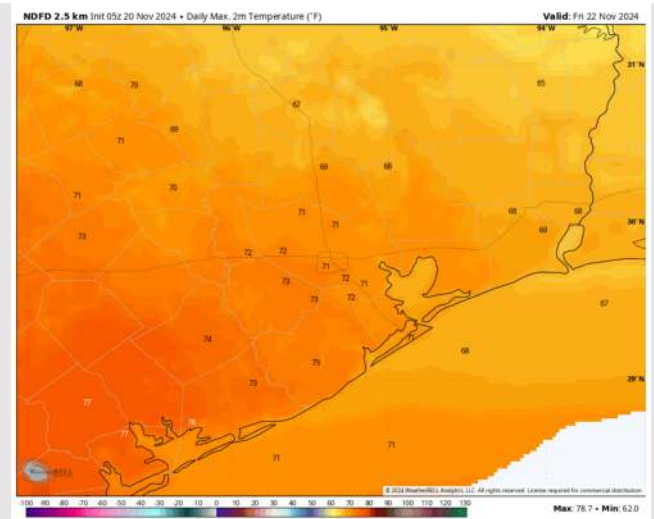
High Temps: **N of Morgan's Point:** Lower 70s F. **S of Morgan's Point:** Near 70 F.

Visibility: No visibility concerns for Friday.

Precip Image: 4 PM CT

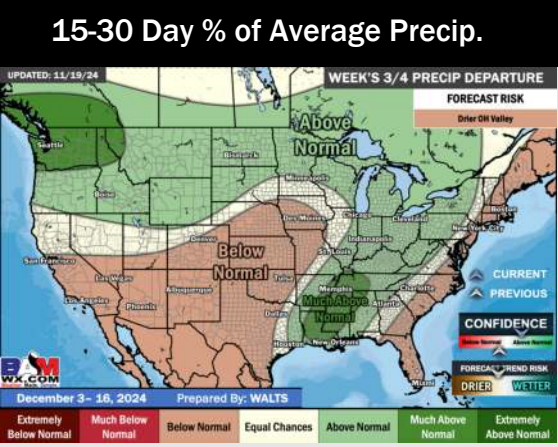
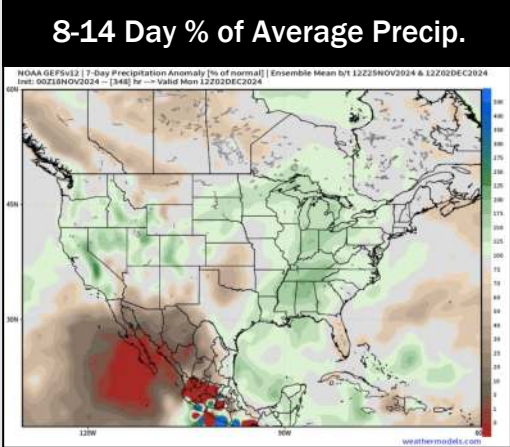
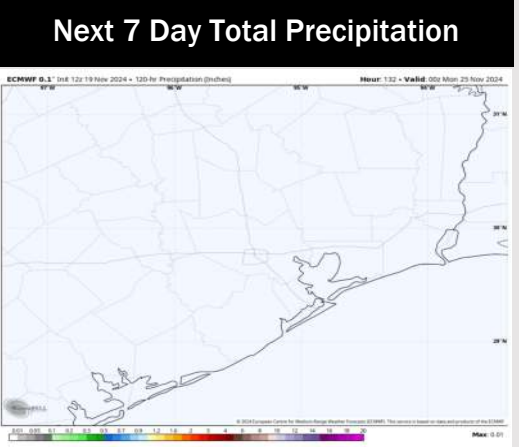
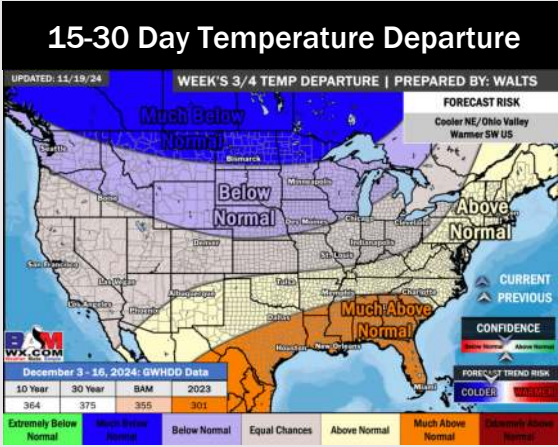
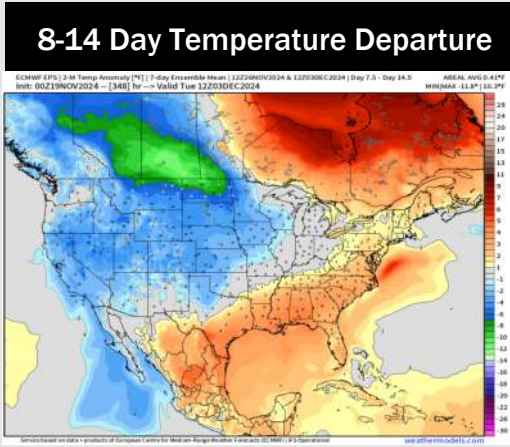
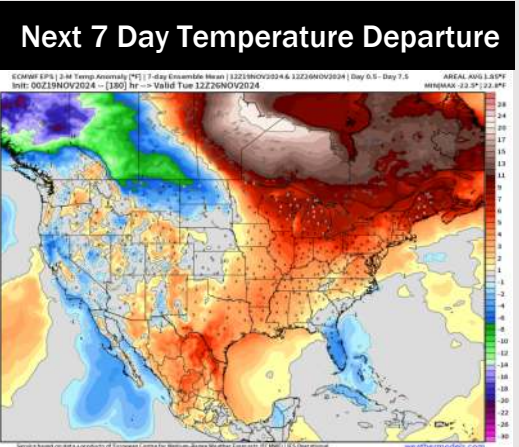


Wind Speed:
10 AM CT



High Temps
Friday

Houston Pilots: 11/20/24



- Temps are expected to be above normal for the week 1 timeframe. Dry conditions for the remainder of the week 1 timeframe.
- Above normal temperatures are favored for week 2. Favoring precipitation to be slightly above normal.
- Much above normal temperatures and slightly above normal precipitation chances are expected for the weeks 3/4 timeframe.