

Houston Pilots Forecast Package



Updated: 12:50 PM CT

Monday, November 18, 2024

Forecaster: Hope Kleitsch

Weather Headlines

- Wind gusts of 30-35 kts will be possible at all Stations through 7 PM today.
- After today, dry conditions are favored over the next 72 hours.
- Zulu port conditions will continue through 6PM MON.



Current Radar: 12:45 PM CT



As always, please do not hesitate to reach out to us with any forecast questions via the chat option on Clarity or our on-call number, **(317)-560-8122** press 1 for forecast questions.

Houston Pilots Port Trigger Update

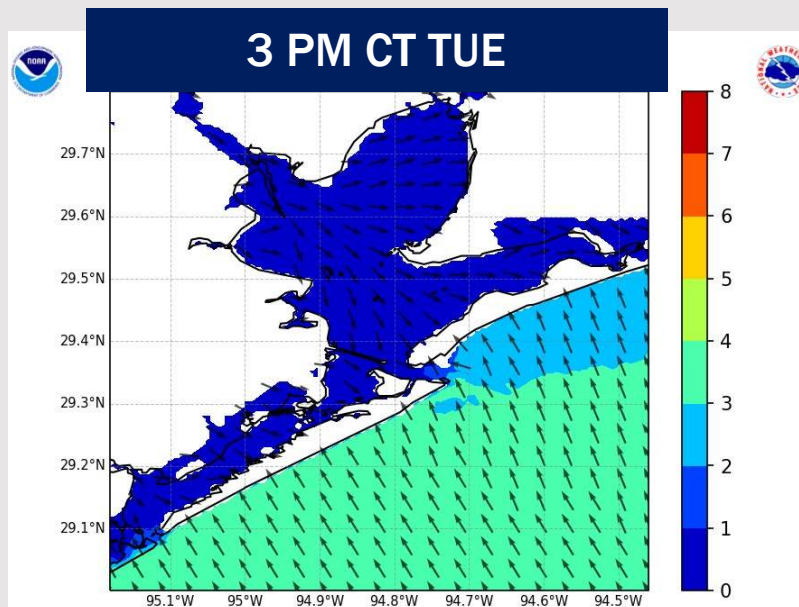
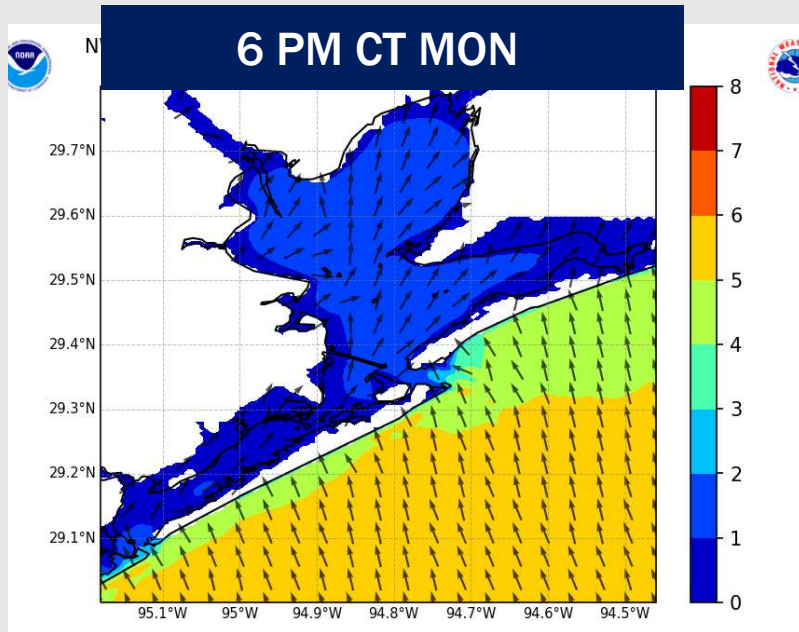


Port Condition	34 KTS+ Sustained Wind Trigger Reached at:	6 Foot Wave Trigger Reached at:	Time Remaining/Trigger Ends At:
Victor	—	—	—
Whiskey	—	—	—
X-Ray	—	—	—
Yankee	—	—	—
Zulu	—	CURRENT	MON 6 PM

Port Condition	Trigger Definition	Trigger Reached?
Victor	Hurricane entering/developing in Gulf of Mexico that's a threat to the area	NO
Whiskey	72 hours prior to predicted sustained winds of 34+ KTS	NO
X-Ray	48 hours prior to predicted sustained winds of 34+ KTS or 6' wave height	Passed
Yankee	24 hours prior to predicted sustained winds of 34+ KTS or 6' wave height	Passed
Zulu	12 hours prior to predicted sustained winds of 34+ KTS or 6' wave height	YES

NOTES: Wave heights are expected to drop below 6' by 6PM on Monday and will continue to decrease overnight MON into TUE.

Wave Height Forecast Update

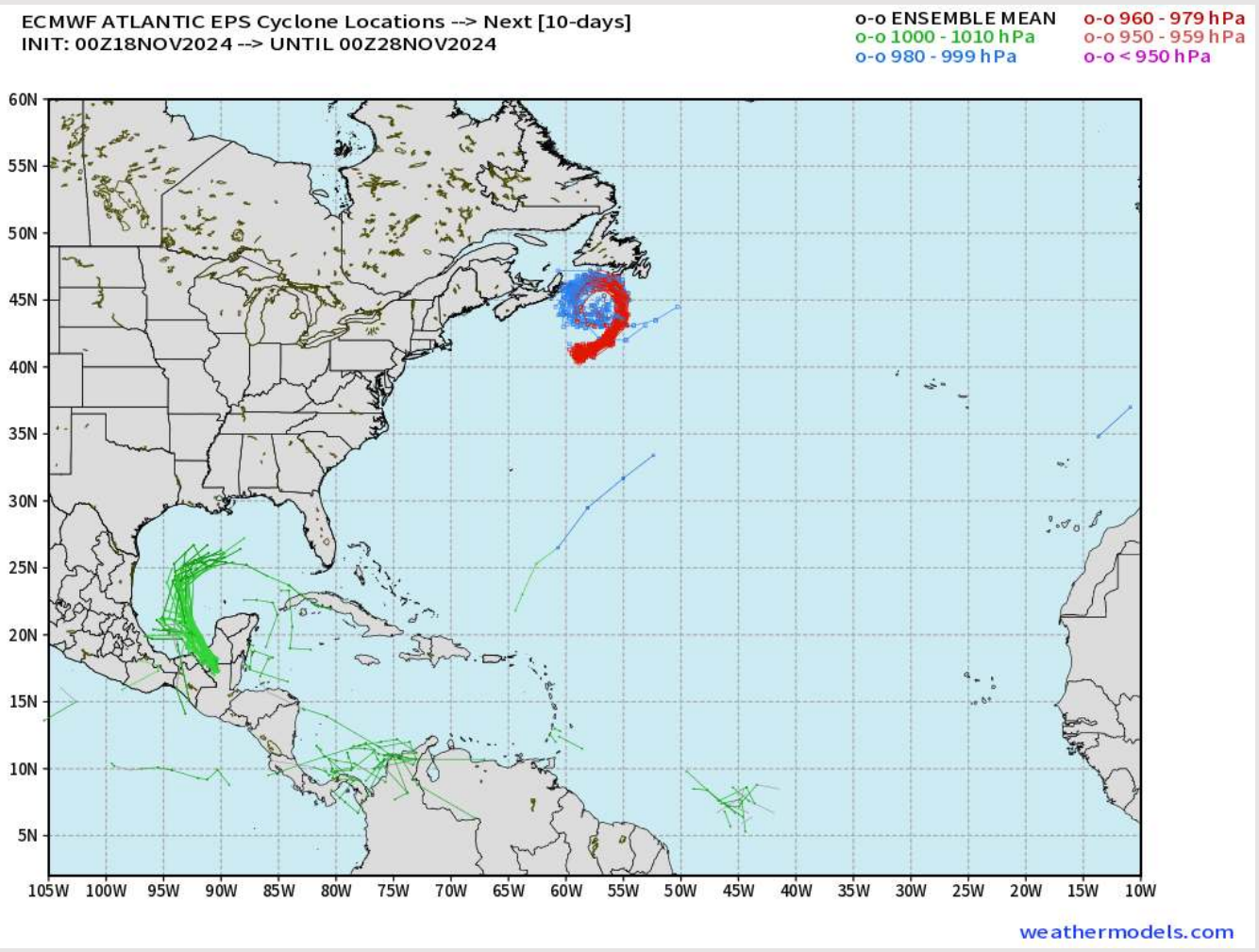


Wave heights are anticipated to drop below 6' by 6PM MON.

Heights will continue to decrease through the night. Wave heights of 3'-4' will continue through majority of the day TUE.

Houston Pilots Tropical Update

Tropical Depression Sara Potential Tracks



Tropical Depression Sara has dissipated over the Yucatán Peninsula

No tropical impacts are favored in HOU over the next 10 days.

Houston Pilots Extended Range Visibility Report



Thursday 11/20/24

Fog not favored for THU.



Friday 11/21/24

Fog not favored for FRI.



Saturday 11/22/24

Fog not favored for SAT.



Chance for Fog

Thursday AM	Unlikely
Thursday PM	Unlikely
Friday AM	Unlikely
Friday PM	Unlikely
Saturday AM	Unlikely
Saturday PM	Unlikely

Houston Pilots Visibility Chart (miles)



Forecast Confidence



Visibility	Mon 2 pm	Mon 3 pm	Mon 4 pm	Mon 5 pm	Mon 6 pm	Mon 7 pm	Mon 8 pm	Mon 9 pm	Mon 10 pm	Mon 11 pm	Tue 12 am	Tue 1 am	Tue 2 am	Tue 3 am	Tue 4 am	Tue 5 am	Tue 6 am	Tue 7 am	Tue 8 am	Tue 9 am	Tue 10 am	Tue 11 am	Tue 12 pm	Tue 1 pm
Houston Pilots N - 610 Bridge	6.9	6.9	3.9	5.9	5.9	6.9	6.9	6.9	6.9	6.9	6.9	6.9	5.9	4.9	4.9	4.9	4.9	4.9	4.9	9	9	10	10	10
Houston Pilots M - Kinder 1	6.9	6.9	3.9	5.9	5.9	6.9	6.9	6.9	6.9	6.9	6.9	6.9	5.9	4.9	4.9	4.9	4.9	4.9	4.9	9	9	10	10	10
Houston Pilots L - Greens Bayou	6.9	5.9	4.9	5.9	4.9	6.9	6.9	6.9	6.9	6.9	6.9	6.9	5.9	4.9	4.9	4.9	4.9	4.9	3.9	6.9	7.9	9	10	10
Houston Pilots K - Shell Crude	6.9	5.9	4.9	5.9	4.9	6.9	6.9	6.9	6.9	6.9	6.9	6.9	5.9	4.9	4.9	4.9	4.9	4.9	3.9	6.9	7.9	9	10	10
Houston Pilots J - Lynchburg Ferries	6.9	5.9	5.9	5.9	4.9	6.9	6.9	6.9	6.9	6.9	6.9	6.9	5.9	5.9	4.9	4.9	4.9	4.9	3.9	6.9	9	10	10	10
Houston Pilots I - Exxon 3	6.9	5.9	4.9	5.9	5.9	6.9	6.9	6.9	6.9	6.9	6.9	6.9	5.9	4.9	4.9	4.9	4.9	4.9	3.9	6.9	7.9	9	10	10
Houston Pilots H - Morgans Point	6.9	5.9	5.9	5.9	5.9	6.9	6.9	6.9	6.9	6.9	6.9	6.9	5.9	5.9	4.9	4.9	4.9	4.9	3.9	6.9	7.9	10	10	10
Houston Pilots G - 75/76	6.9	6.9	5.9	5.9	6.9	5.9	6.9	8	8	8	8	8	8	9	7.9	9	6.9	6.9	6.9	6.9	7.9	10	10	10
Houston Pilots F - 63/64	6.9	6.9	5.9	5.9	6.9	5.9	6.9	8	8	8	8	9	8	9	9	9	8	6.9	6.9	6.9	7.9	10	10	10
Houston Pilots E - 51/52	6.9	6.9	5.9	4.9	6.9	5.9	6.9	8	8	8	9	9	8	9	9	9	8	8	8	6.9	9	10	10	10
Houston Pilots D - 37/38	6.9	6.9	5.9	4.9	6.9	5.9	6.9	9	8	8	9	9	8	9	9	9	9	8	8	6.9	9	10	10	10
Houston Pilots C - 25/26	6.9	6.9	6.9	4.9	6.9	5.9	6.9	9	8	8	10	9	9	10	9	10	9	9	8	7.9	10	10	10	10
Houston Pilots B - 11/12	6.9	6.9	6.9	4.9	6.9	5.9	6.9	8	6.9	6.9	8	9	8	9	9	10	9	9	9	7.9	10	10	10	10
Houston Pilots A - 1 & 2 Bravo	6.9	6.9	6.9	5.9	5.9	5.9	6.9	8	6.9	6.9	6.9	8	8	9	9	9	8	8	9	7.9	9	10	10	10

NOTE: This is automated data that may/may not agree with the official BAM thinking that's found on the daily slides or special visibility report slides. This data should be used as a guide only

Houston Pilots Wind Chart



Sustained wind 10 Knots

Gusts 15 Knots

Wind from the SE

Example

10

15

↙

Wind	Mon 2 pm	Mon 3 pm	Mon 4 pm	Mon 5 pm	Mon 6 pm	Mon 7 pm	Mon 8 pm	Mon 9 pm	Mon 10 pm	Mon 11 pm	Tue 12 am	Tue 1 am	Tue 2 am	Tue 3 am	Tue 4 am	Tue 5 am	Tue 6 am	Tue 7 am	Tue 8 am	Tue 9 am	Tue 10 am	Tue 11 am	Tue 12 pm	Tue 1 pm
Houston Pilots N - 610 Bridge	16 32 ↑	15 31 ↑	14 29 ↑	13 24 ↑	9 18 →	6 13 →	6 12 →	5 9 →	3 9 →	3 8 →	3 8 →	3 7 →	3 7 →	3 7 →	3 7 →	3 7 →	3 7 →	3 7 →	3 7 →	3 7 →	3 9 →	5 9 →	6 10 →	6 12 →
Houston Pilots M - Kinder 1	16 32 ↑	15 31 ↑	14 29 ↑	13 24 ↑	9 18 →	6 13 →	6 12 →	5 10 →	3 9 →	3 8 →	3 8 →	3 7 →	3 7 →	3 7 →	3 7 →	3 7 →	3 7 →	3 7 →	3 7 →	3 7 →	3 9 →	5 9 →	6 10 →	6 12 →
Houston Pilots L - Greens Bayou	16 33 ↑	15 31 ↑	14 29 ↑	13 23 ↑	9 18 →	6 13 →	6 12 →	5 10 →	3 9 →	3 8 →	3 8 →	3 7 →	3 7 →	3 7 →	3 7 →	3 7 →	3 7 →	3 7 →	3 7 →	3 7 →	3 9 →	5 10 →	5 10 →	6 12 →
Houston Pilots K - Shell Crude	16 32 ↑	15 31 ↑	14 29 ↑	13 23 ↑	9 18 →	7 13 →	6 12 →	5 10 →	3 9 →	3 8 →	3 8 →	3 7 →	3 7 →	3 7 →	3 7 →	3 7 →	3 7 →	3 7 →	3 7 →	3 7 →	3 9 →	5 9 →	6 10 →	6 12 →
Houston Pilots J - Lynchburg Ferries	17 33 ↑	17 31 ↑	15 28 ↑	13 23 ↑	10 18 →	6 14 →	6 12 →	5 10 →	3 8 →	3 8 →	3 8 →	3 7 →	3 7 →	3 7 →	3 7 →	3 7 →	3 7 →	3 7 →	3 7 →	3 7 →	3 9 →	3 9 →	5 10 →	6 12 →
Houston Pilots I - Exxon 3	18 30 ↑	17 29 ↑	16 26 ↑	15 23 ↑	13 20 ↑	10 15 →	8 14 →	8 13 →	7 10 →	7 10 →	6 10 →	6 9 →	6 9 →	6 9 →	6 9 →	6 9 →	6 8 →	6 9 →	6 9 →	6 8 →	6 9 →	6 10 →	6 12 →	7 13 →
Houston Pilots H - Morgans Point	18 30 ↑	17 29 ↑	16 26 ↑	15 23 ↑	13 20 ↑	10 15 →	9 14 →	8 12 →	7 10 →	7 10 →	6 9 →	6 9 →	6 9 →	6 9 →	6 9 →	6 8 →	6 9 →	6 9 →	6 8 →	6 9 →	6 8 →	6 9 →	6 10 →	6 12 →
Houston Pilots G - 75/76	20 31 ↑	18 29 ↑	17 29 ↑	16 25 ↑	14 22 ↑	12 17 →	10 15 →	9 14 →	8 13 →	8 12 →	8 12 →	8 10 →	8 10 →	8 10 →	8 10 →	8 10 →	8 10 →	8 10 →	7 10 →	7 10 →	7 10 →	6 12 →	6 12 →	7 13 →
Houston Pilots F - 63/64	20 31 ↑	18 29 ↑	17 29 ↑	16 25 ↑	14 22 ↑	12 17 →	10 15 →	9 14 →	8 13 →	8 12 →	8 12 →	8 10 →	8 10 →	8 10 →	8 10 →	8 10 →	8 10 →	8 10 →	7 10 →	7 10 →	7 10 →	6 12 →	6 12 →	7 13 →
Houston Pilots E - 51/52	20 30 ↑	20 29 ↑	18 28 ↑	17 25 ↑	15 22 ↑	12 17 →	10 15 →	9 14 →	8 13 →	8 12 →	8 12 →	8 10 →	8 12 →	8 12 →	8 12 →	8 12 →	8 12 →	8 12 →	7 10 →	7 10 →	7 10 →	6 12 →	6 12 →	7 13 →
Houston Pilots D - 37/38	20 30 ↑	20 29 ↑	18 28 ↑	17 25 ↑	15 22 ↑	13 17 →	10 16 →	9 15 →	8 13 →	8 13 →	8 12 →	8 10 →	8 12 →	8 12 →	8 12 →	8 12 →	8 12 →	8 12 →	8 12 →	7 10 →	7 10 →	7 12 →	7 12 →	7 13 →
Houston Pilots C - 25/26	20 30 ↑	20 29 ↑	17 28 ↑	16 25 ↑	14 22 ↑	13 18 →	10 16 →	9 15 →	8 13 →	8 13 →	8 12 →	7 12 →	7 12 →	8 12 →	8 12 →	8 12 →	8 12 →	8 12 →	8 12 →	8 12 →	8 12 →	7 13 →	7 13 →	7 13 →
Houston Pilots B - 11/12	17 29 ↑	17 29 ↑	17 26 ↑	15 24 ↑	14 22 ↑	12 18 →	10 16 →	8 15 →	8 14 →	7 13 →	7 12 →	6 12 →	7 12 →	7 12 →	8 13 →	8 13 →	8 13 →	8 13 →	8 12 →	8 13 →	8 12 →	8 13 →	8 13 →	8 13 →
Houston Pilots A - 1 & 2 Bravo	20 30 ↑	20 30 ↑	20 30 ↑	17 28 ↑	16 25 ↑	15 22 ↑	13 20 ↑	12 17 →	10 15 →	10 15 →	9 14 →	9 13 →	9 14 →	9 14 →	10 15 →	10 15 →	10 15 →	10 15 →	9 14 →	9 14 →	8 13 →	8 13 →	8 14 →	8 14 →

NOTE: This is automated data that may/may not agree with the official BAM thinking that's found on the daily slides. This data should be used as a guide only.

Houston Pilots: MON. 11/18/2024



Forecast Discussion

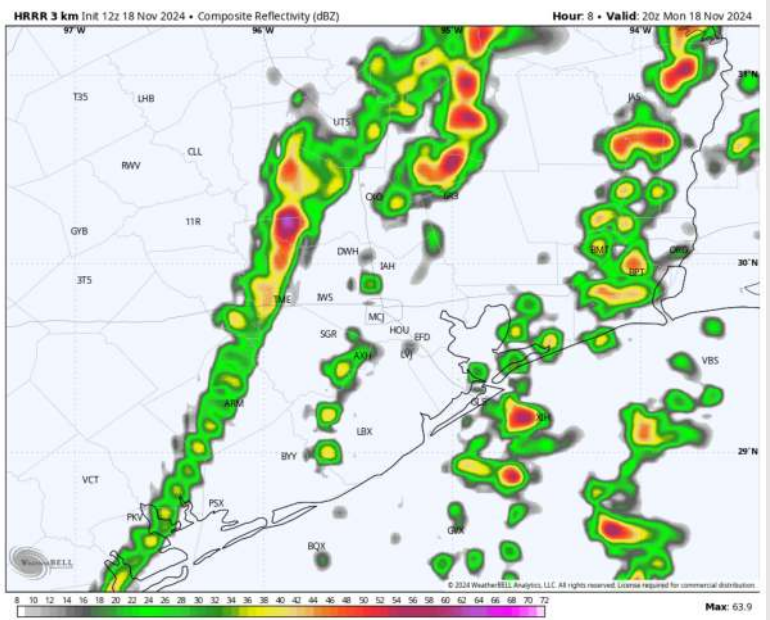
Precip: Scattered showers/storms are expected to continue through 8 PM with dry conditions favored after then.

Wind: Winds will be out of the S/SE through 6 PM, shifting out of the W/NW after then. **N of Morgan's Point:** Winds will be at 12 – 18 kts through 6 PM before decreasing to 2 – 7 kts for the rest of the day. **S of Morgan's Point:** Winds will be at 18 – 23 kts through 7 PM before decreasing to 8 – 13 kts for the evening. **Non-thunderstorm wind gusts of 30-35 kts will be possible for all Stations through 7 PM.**

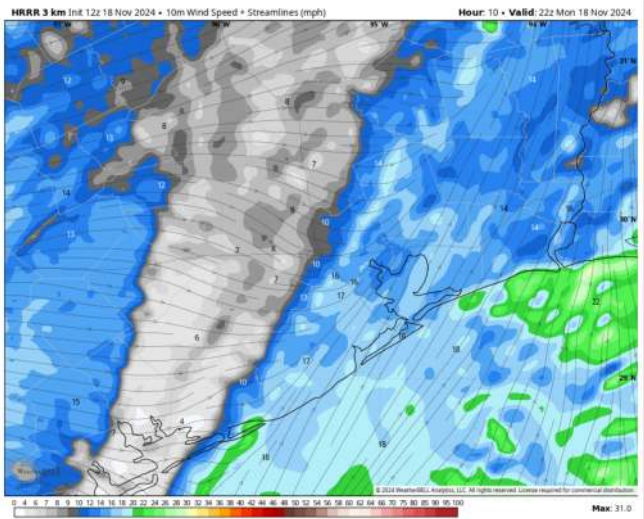
Low Temps: **N of Morgan's Point:** Near 60 F. **S of Morgan's Point:** Upper 60s F to lower 70s F.

Visibility: No fog concerns for today. Heavy showers/storms can reduce visibilities briefly.

Precip Image: 2 PM CT

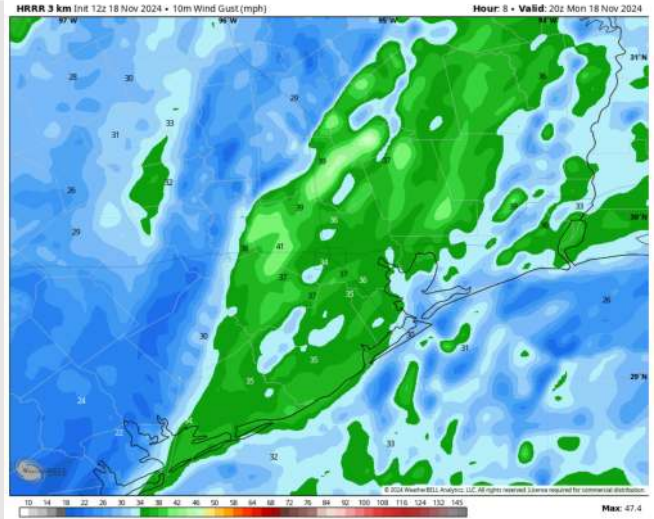


Wind Speed 4 PM CT



Wind Speed
4 PM CT

Max Wind Gusts Today



Max Wind
Gusts Today

Houston Pilots: TUE. 11/19/2024



Forecast Discussion

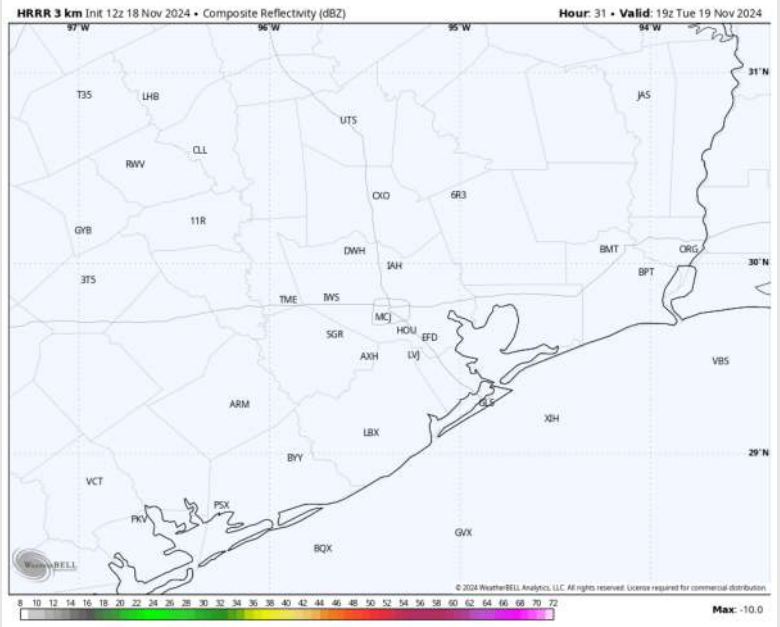
Precip: Favoring dry conditions through Tuesday.

Wind: Winds will be out of the NW throughout the day Tuesday. **N of Morgan's Point:** Winds will be at 2 - 7 kts throughout the day. **S of Morgan's Point:** Winds will be at 3 - 9 kts through Tuesday.

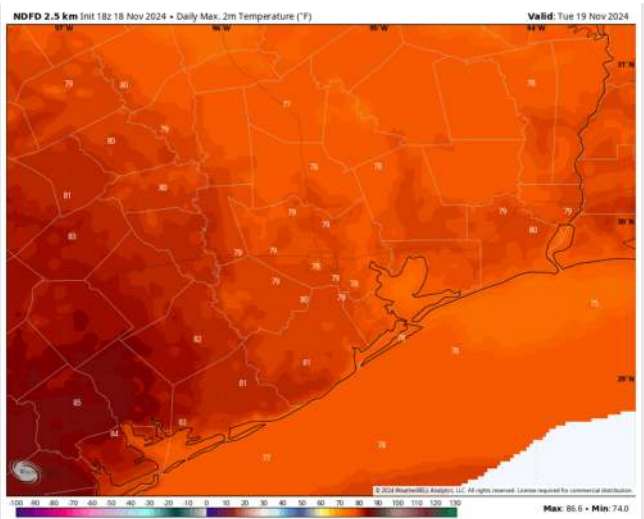
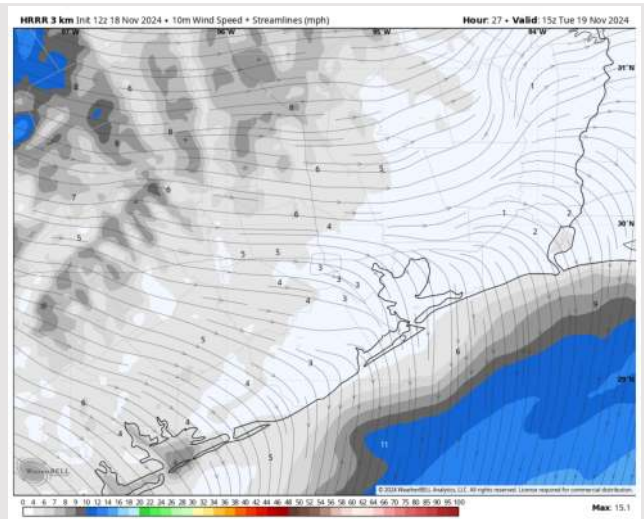
High Temps: **N of Morgan's Point:** Near 80 F. **S of Morgan's Point:** Mid to Upper 70s F.

Visibility: No visibility concerns for Tuesday.

Precip Image: 1 PM CT



Wind Speed:
9 AM CT



High Temps
Tuesday

Houston Pilots: WED. 11/20/2024



Forecast Discussion

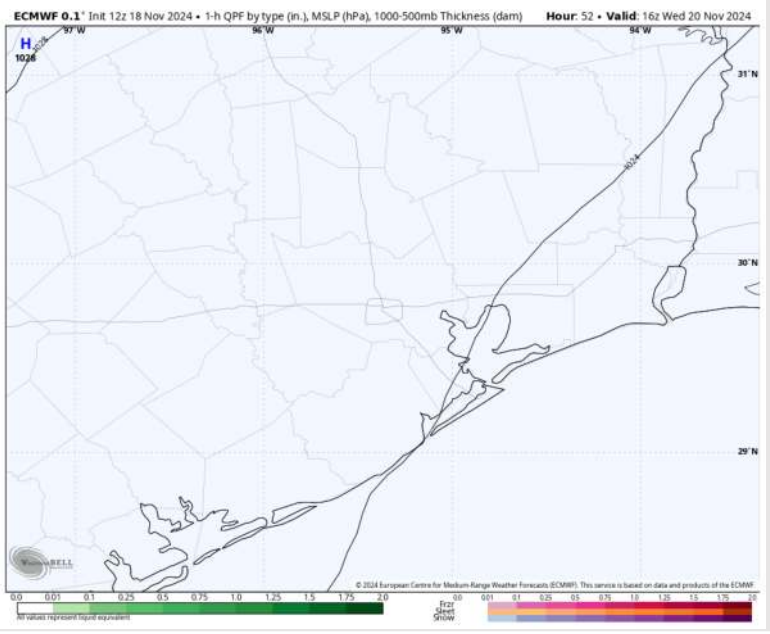
Precip: Favoring dry conditions for Wednesday.

Wind: Winds will be out of the N/NW throughout the day. **N of Morgan's Point:** Winds at 5 – 10 kts , decreasing to 3 – 8 kts after 5 PM. **S of Morgan's Point:** Winds at 15 – 20 kts, decreasing to 8 – 13 kts after 8 PM. **Wind gusts of 20 – 30 kts will be possible for Stations S. of Morgan's Point through 8 PM.**

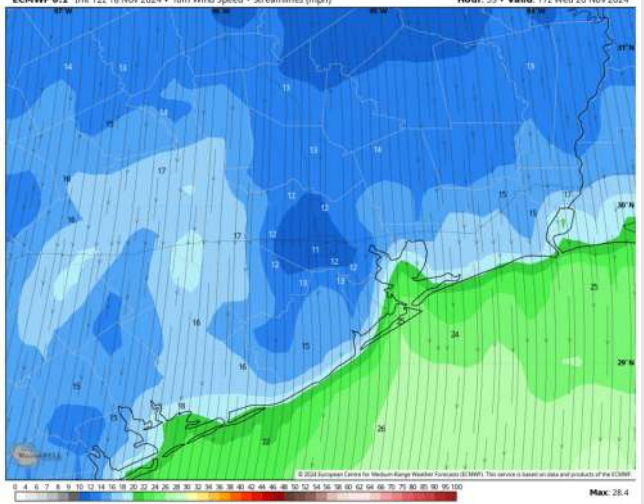
High Temps: **N of Morgan's Point:** Upper 60s / Near 70 F. **S of Morgan's Point:** Upper 60s / Near 70 F.

Visibility: No visibility concerns for Wednesday.

Precip Image: 10 AM CT

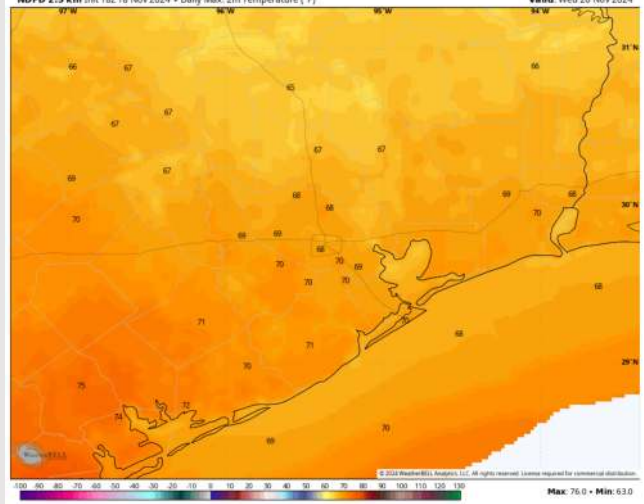


ECMWF 0.1° Init 12z 18 Nov 2024 • 10m Wind Speed • Streamlines (mph) Hour: 53 • Valid: 17z Wed 20 Nov 2024



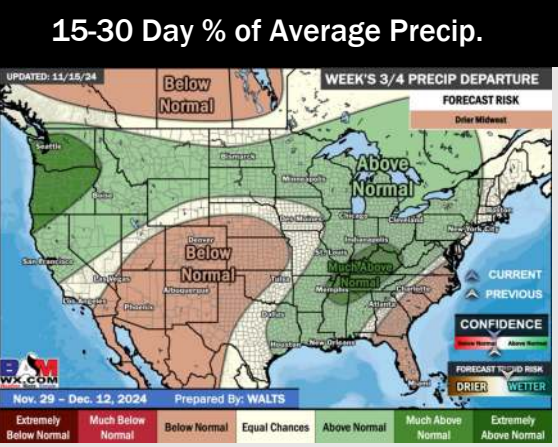
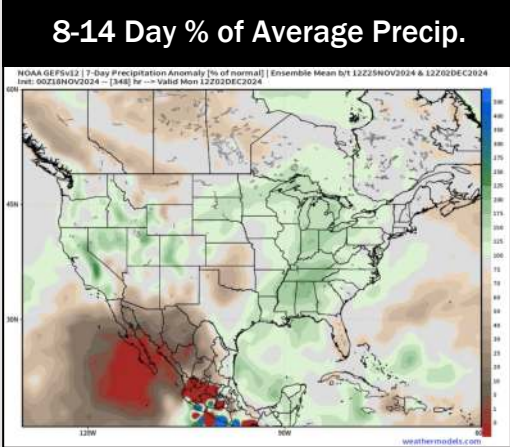
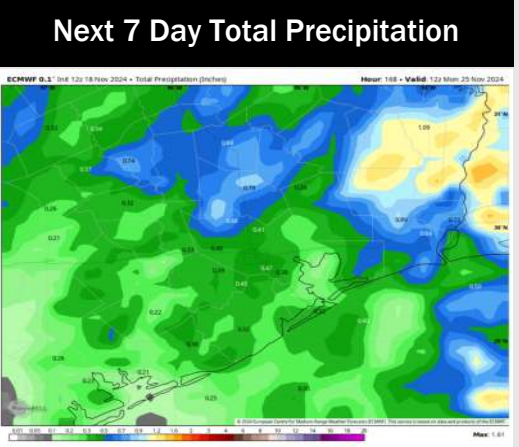
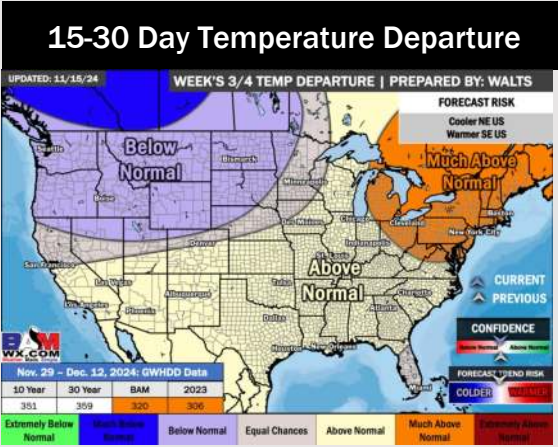
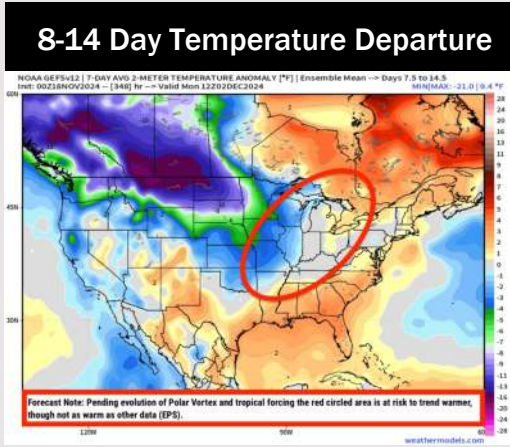
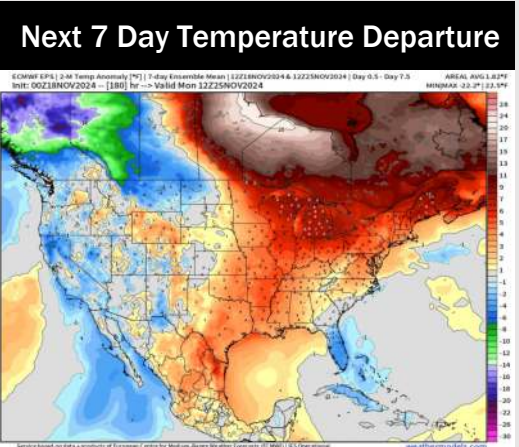
Wind Speed:
11 AM CT

NDFD 2.5 km Init 18z 18 Nov 2024 • Daily Max. 2m Temperature (°F) Valid: Wed 20 Nov 2024



High Temps
Wednesday

Houston Pilots: 11/18/24



- Temps are expected to be above normal for the week 1 timeframe. Favoring scattered rain chances today before mostly dry conditions enter for the remainder of the week 1 timeframe.
- Above normal temperatures are favored for week 2. Favoring precipitation to be slightly above normal.
- Above normal temperatures and above normal precipitation chances are expected for the weeks 3/4 timeframe.