

Houston Pilots Forecast Package



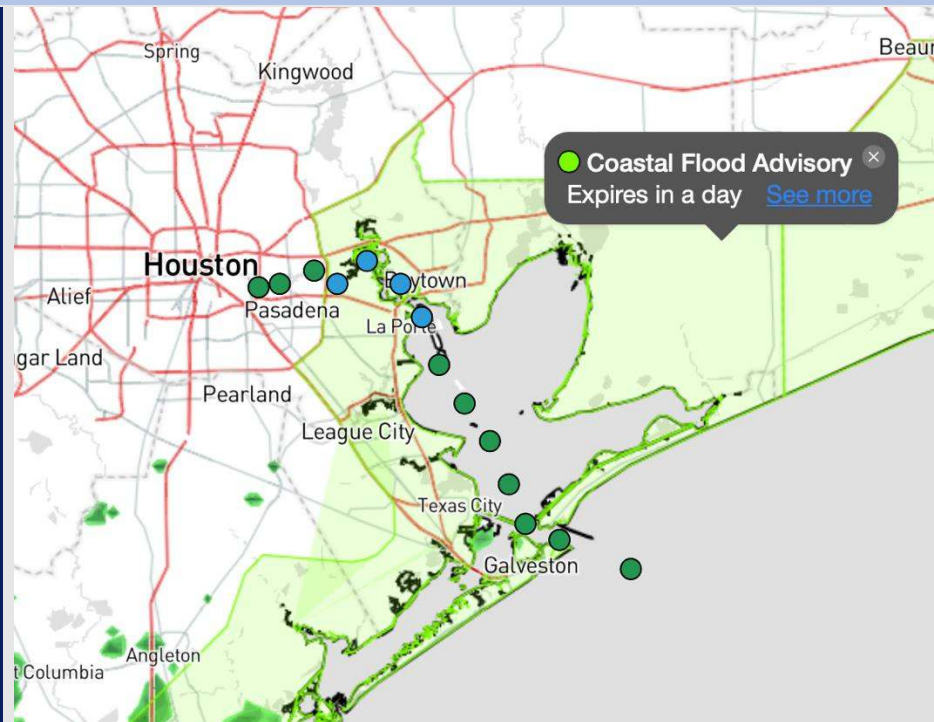
Updated: 10:30 PM CT

Sunday, November 17, 2024

Forecaster: Tyler Riggles

Weather Headlines

- **Showers/Storm chances work into the area today and MON. Severe risks will be possible.**
- **Non-thunderstorm wind gusts may reach 25 - 30kts at times today, especially at the Boarding Station.**
- **Wave heights are favored to reach 6'+ by 6AM MON. Check wave height slide for more information.**
- **X-Ray Trigger Video Update: [Video](#)**



Current Radar: 10:24 PM CT



As always, please do not hesitate to reach out to us with any forecast questions via the chat option on Clarity or our on-call number, **(317)-560-8122** press 1 for forecast questions.

Houston Pilots Port Trigger Update

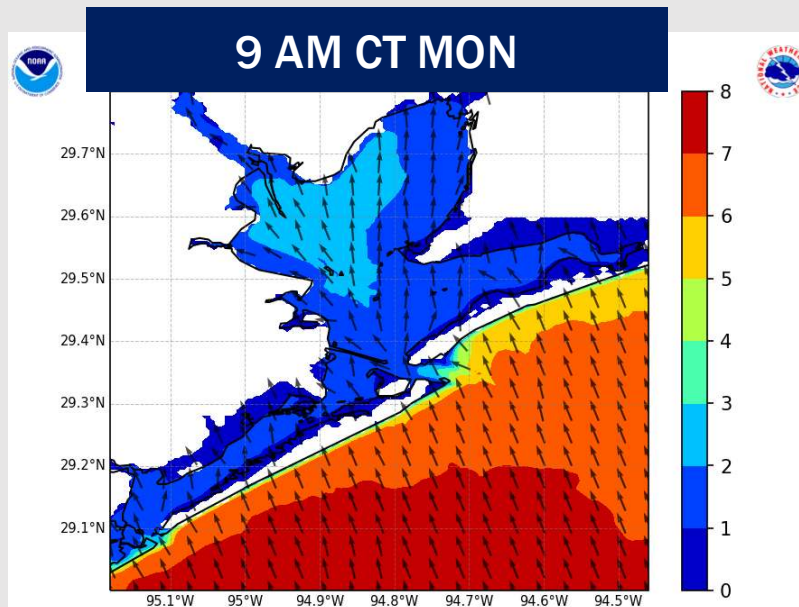
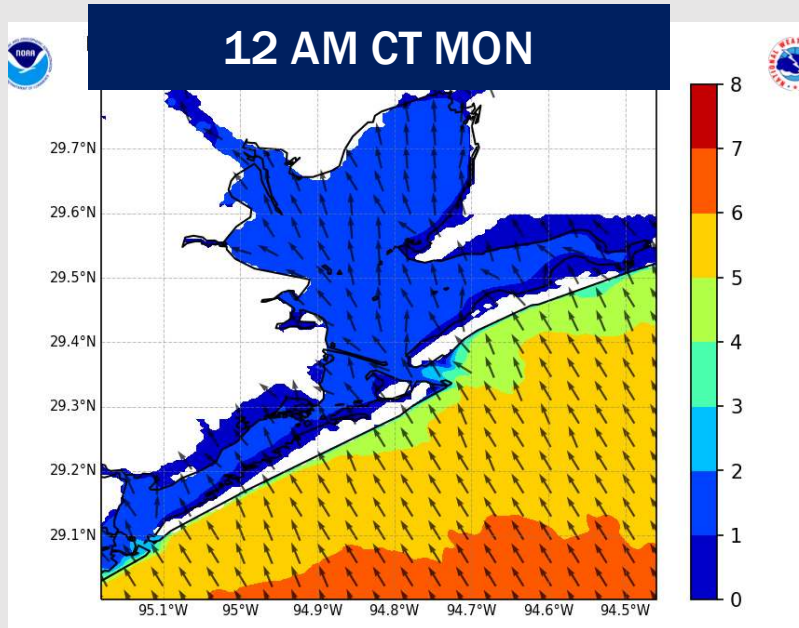


Port Condition	34 KTS+ Sustained Wind Trigger Reached at:	6 Foot Wave Trigger Reached at:	Time Remaining/Trigger Ends At:
Victor	---	---	---
Whiskey	---	---	---
X-Ray	---	CURRENT	3AM SUN
Yankee	---	3AM SUN	3PM SUN
Zulu	---	3PM SUN	MON 9 PM

Port Condition	Trigger Definition	Trigger Reached?
Victor	Hurricane entering/developing in Gulf of Mexico that's a threat to the area	NO
Whiskey	72 hours prior to predicted sustained winds of 34+ KTS	NO
X-Ray	48 hours prior to predicted sustained winds of 34+ KTS or 6' wave height	YES
Yankee	24 hours prior to predicted sustained winds of 34+ KTS or 6' wave height	NO
Zulu	12 hours prior to predicted sustained winds of 34+ KTS or 6' wave height	NO

NOTES: Elevated wind gusts SAT PM and into SUN will help increase wave heights throughout the end of the weekend, with wave heights peaking at 6'-8' by SUN afternoon. Wave heights are expected to drop below 6' by 9PM on Monday.

Wave Height Forecast Update



Wave heights will begin increasing Sunday AM with wave heights reaching 4'-5' by 9PM Sunday.

Wave heights will reach of 5' -6' by 3AM Monday, 6' - 7' 6AM.

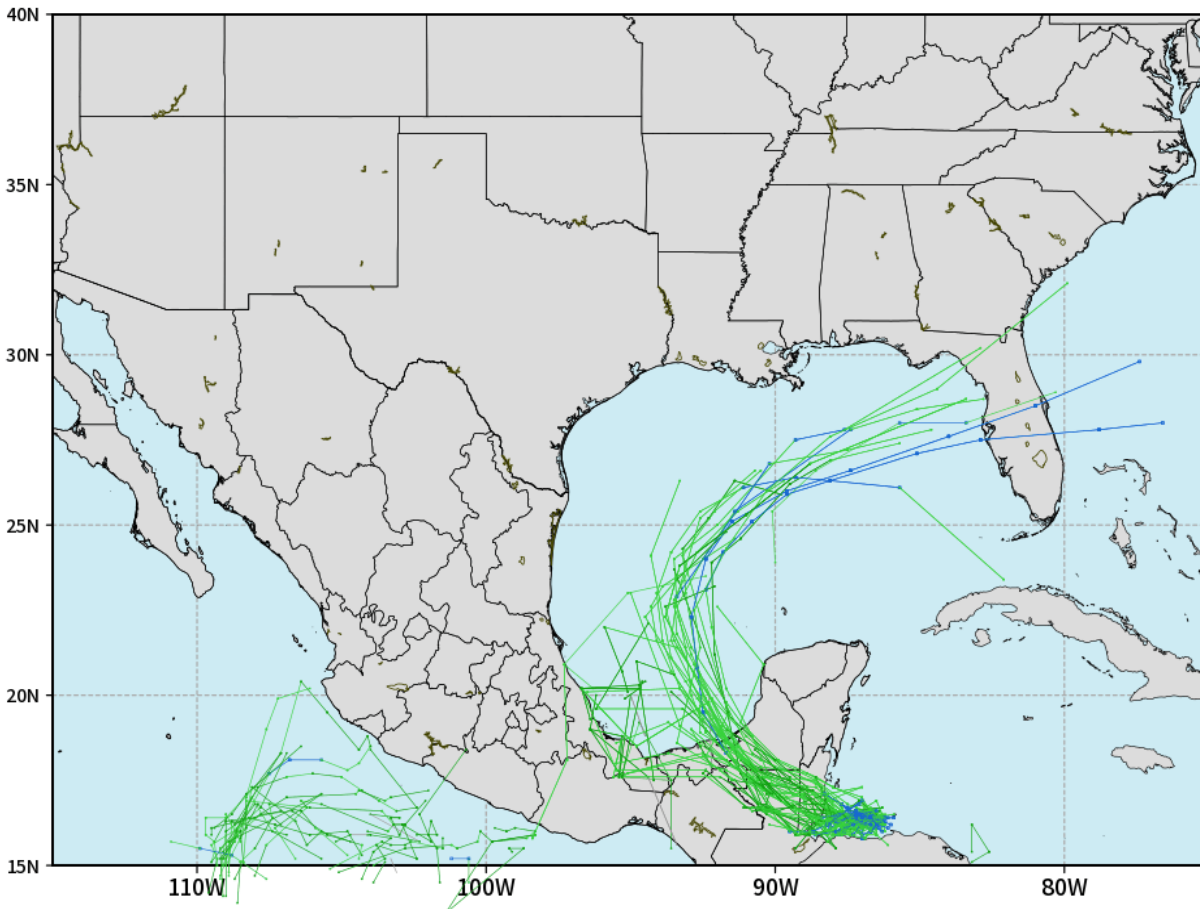
Following 12PM MON wave heights are favored to decrease throughout the afternoon dipping below 6' by 9PM Monday

Houston Pilots Tropical Update

Tropical Storm Sara Potential Tracks

ECMWF GULF EPS Cyclone Locations --> Next [10-days]
INIT: 12Z16NOV2024 --> UNTIL 12Z26NOV2024

o-o ENSEMBLE MEAN
o-o 1000 - 1010 hPa
o-o 980 - 999 hPa
o-o 960 - 979 hPa
o-o 950 - 959 hPa
o-o < 950 hPa



Tropical Storm Sara is favored to weaken and likely dissipate across the Yucatán Peninsula

Confidence remains high this storm will push northeast towards Florida and not impact Houston directly.

Houston Pilots Extended Range Visibility Report



Wednesday 11/19/24

Fog not favored for WED.

Forecast Confidence



Friday 11/21/24

Fog not favored for FRI.

Forecast Confidence



Thursday 11/20/24

Fog not favored for THU.

Forecast Confidence



Chance for Fog

Wednesday AM	Unlikely
Wednesday PM	Unlikely
Thursday AM	Unlikely
Thursday PM	Unlikely
Friday AM	Unlikely
Friday PM	Unlikely

Houston Pilots Visibility Chart (miles)



Forecast Confidence



Visibility	Sun 12 am	Sun 1 am	Sun 2 am	Sun 3 am	Sun 4 am	Sun 5 am	Sun 6 am	Sun 7 am	Sun 8 am	Sun 9 am	Sun 10 am	Sun 11 am	Sun 12 pm	Sun 1 pm	Sun 2 pm	Sun 3 pm	Sun 4 pm	Sun 5 pm	Sun 6 pm	Sun 7 pm	Sun 8 pm	Sun 9 pm	Sun 10 pm	Sun 11 pm
Houston Pilots N - 610 Bridge	10	10	10	10	7.9	6.9	7.9	9	7.9	6.9	6.9	6.9	10	10	10	10	10	10	10	10	10	10	10	10
Houston Pilots M - Kinder 1	10	10	10	10	9	6.9	7.9	9	7.9	6.9	6.9	6.9	10	10	10	10	10	10	10	10	10	10	10	10
Houston Pilots L - Greens Bayou	10	10	10	10	9	7.9	2.9	9	7.9	6.9	6.9	6.9	10	10	10	10	10	10	10	10	10	10	10	10
Houston Pilots K - Shell Crude	10	10	10	10	9	10	2.9	9	7.9	6.9	6.9	6.9	10	10	10	10	10	10	10	10	10	10	10	10
Houston Pilots J - Lynchburg Ferries	10	10	10	10	9	10	2.9	7.9	7.9	6.9	6.9	9	10	10	10	10	10	10	10	10	10	10	10	10
Houston Pilots I - Exxon 3	10	10	10	10	9	10	3.9	9	7.9	6.9	6.9	9	10	10	10	10	10	10	10	10	10	10	10	10
Houston Pilots H - Morgans Point	10	10	10	10	9	10	6.9	9	9	6.9	6.9	9	10	10	10	10	10	10	10	10	10	10	10	10
Houston Pilots G - 75/76	10	10	10	10	10	10	7.9	10	10	7.9	7.9	9	10	10	10	10	10	10	10	10	10	10	10	9
Houston Pilots F - 63/64	10	10	10	10	10	10	7.9	10	10	7.9	7.9	10	10	10	10	10	10	10	10	10	10	10	10	9
Houston Pilots E - 51/52	10	10	10	10	10	10	10	10	10	9	10	10	10	10	10	10	10	10	10	10	10	10	10	9
Houston Pilots D - 37/38	10	10	10	10	10	10	10	10	10	9	10	10	10	10	10	10	10	10	10	10	10	10	10	9
Houston Pilots C - 25/26	10	10	10	10	10	10	10	10	10	9	10	10	10	10	10	10	10	10	10	10	10	10	10	9
Houston Pilots B - 11/12	10	10	10	10	10	10	10	10	10	10	10	10	10	10	10	10	10	10	10	10	10	10	10	10
Houston Pilots A - 1 & 2 Bravo	10	10	10	10	10	10	10	10	10	10	10	10	10	10	10	10	10	10	10	10	10	10	10	10

NOTE: This is automated data that may/may not agree with the official B.A.M. thinking that's found on the daily slides or special visibility report slides. This data should be used as a guide only

Houston Pilots Wind Chart



Forecast Confidence



Sustained wind 10 Knots
 Gusts 15 Knots
 Wind from the SE

Example

10
 15
 ↙

Wind	Sun 12 am	Sun 1 am	Sun 2 am	Sun 3 am	Sun 4 am	Sun 5 am	Sun 6 am	Sun 7 am	Sun 8 am	Sun 9 am	Sun 10 am	Sun 11 am	Sun 12 pm	Sun 1 pm	Sun 2 pm	Sun 3 pm	Sun 4 pm	Sun 5 pm	Sun 6 pm	Sun 7 pm	Sun 8 pm	Sun 9 pm	Sun 10 pm	Sun 11 pm
Houston Pilots N - 610 Bridge	8 16 ↖	8 16 ↖	8 16 ↖	8 16 ↖	8 16 ↖	8 16 ↖	8 15 ↖	8 15 ↖	8 16 ↖	8 16 ↖	9 18 ↖	10 20 ↖	10 21 ↖	10 22 ↖	13 23 ↖	13 25 ↖	13 26 ↖	14 26 ↖	13 25 ↖	12 23 ↖	13 25 ↖	14 26 ↖	15 26 ↖	16 29 ↖
Houston Pilots M - Kinder 1	8 16 ↖	8 16 ↖	8 17 ↖	8 16 ↖	8 16 ↖	8 16 ↖	8 16 ↖	8 15 ↖	8 16 ↖	8 17 ↖	9 18 ↖	10 20 ↖	10 21 ↖	12 22 ↖	13 23 ↖	13 25 ↖	13 26 ↖	14 26 ↖	13 25 ↖	13 23 ↖	13 25 ↖	15 26 ↖	15 26 ↖	16 29 ↖
Houston Pilots L - Greens Bayou	8 17 ↖	8 17 ↖	8 17 ↖	8 17 ↖	8 17 ↖	8 17 ↖	8 16 ↖	8 16 ↖	8 17 ↖	9 17 ↖	9 18 ↖	10 20 ↖	12 22 ↖	12 23 ↖	13 24 ↖	13 26 ↖	14 26 ↖	14 26 ↖	14 25 ↖	13 23 ↖	14 25 ↖	15 26 ↖	15 26 ↖	16 29 ↖
Houston Pilots K - Shell Crude	8 17 ↖	8 17 ↖	8 18 ↖	8 18 ↖	8 17 ↖	8 17 ↖	8 17 ↖	8 16 ↖	9 17 ↖	9 18 ↖	9 20 ↖	10 20 ↖	12 22 ↖	12 23 ↖	13 24 ↖	13 25 ↖	14 26 ↖	14 26 ↖	13 25 ↖	13 23 ↖	14 25 ↖	15 26 ↖	15 26 ↖	15 29 ↖
Houston Pilots J - Lynchburg Ferries	8 17 ↖	8 17 ↖	8 17 ↖	8 17 ↖	8 17 ↖	8 17 ↖	8 17 ↖	8 16 ↖	8 17 ↖	9 18 ↖	9 20 ↖	12 20 ↖	13 22 ↖	13 23 ↖	14 25 ↖	15 26 ↖	15 26 ↖	15 26 ↖	14 25 ↖	13 23 ↖	14 25 ↖	15 26 ↖	15 28 ↖	15 30 ↖
Houston Pilots I - Exxon 3	14 20 ↖	15 20 ↖	15 21 ↖	15 21 ↖	14 20 ↖	14 20 ↖	14 20 ↖	13 18 ↖	13 20 ↖	13 20 ↖	13 20 ↖	14 21 ↖	14 22 ↖	15 23 ↖	15 24 ↖	16 25 ↖	16 25 ↖	17 26 ↖	17 25 ↖	17 24 ↖	18 26 ↖	20 28 ↖	21 28 ↖	22 30 ↖
Houston Pilots H - Morgans Point	14 20 ↖	15 21 ↖	15 21 ↖	15 21 ↖	14 21 ↖	14 20 ↖	14 20 ↖	13 18 ↖	13 20 ↖	13 20 ↖	13 20 ↖	14 21 ↖	14 22 ↖	15 23 ↖	15 24 ↖	16 24 ↖	16 25 ↖	17 25 ↖	17 25 ↖	17 24 ↖	17 26 ↖	20 28 ↖	21 28 ↖	22 30 ↖
Houston Pilots G - 75/76	16 23 ↖	17 23 ↖	17 24 ↖	17 24 ↖	17 24 ↖	17 24 ↖	16 23 ↖	15 22 ↖	15 23 ↖	15 22 ↖	15 21 ↖	15 23 ↖	15 24 ↖	15 24 ↖	16 25 ↖	17 26 ↖	17 26 ↖	17 28 ↖	18 26 ↖	18 25 ↖	20 29 ↖	21 30 ↖	22 30 ↖	23 32 ↖
Houston Pilots F - 63/64	16 23 ↖	17 24 ↖	17 24 ↖	17 24 ↖	17 24 ↖	17 24 ↖	16 24 ↖	15 23 ↖	15 23 ↖	15 23 ↖	15 22 ↖	15 23 ↖	15 24 ↖	15 24 ↖	15 25 ↖	17 26 ↖	17 26 ↖	18 28 ↖	18 26 ↖	17 25 ↖	20 26 ↖	21 29 ↖	22 30 ↖	23 32 ↖
Houston Pilots E - 51/52	17 24 ↖	17 24 ↖	17 24 ↖	17 24 ↖	17 24 ↖	17 24 ↖	17 24 ↖	16 23 ↖	16 24 ↖	15 24 ↖	15 23 ↖	15 23 ↖	15 24 ↖	15 24 ↖	16 24 ↖	17 26 ↖	17 26 ↖	18 26 ↖	18 26 ↖	17 25 ↖	20 26 ↖	21 29 ↖	21 29 ↖	23 31 ↖
Houston Pilots D - 37/38	17 24 ↖	17 24 ↖	17 24 ↖	17 24 ↖	17 24 ↖	17 24 ↖	17 24 ↖	16 24 ↖	16 24 ↖	15 24 ↖	15 23 ↖	15 23 ↖	15 24 ↖	15 24 ↖	15 24 ↖	17 25 ↖	17 25 ↖	17 26 ↖	17 26 ↖	17 25 ↖	18 26 ↖	20 29 ↖	21 29 ↖	22 31 ↖
Houston Pilots C - 25/26	16 24 ↖	17 24 ↖	17 25 ↖	17 25 ↖	17 25 ↖	17 25 ↖	17 24 ↖	16 24 ↖	16 24 ↖	15 24 ↖	15 23 ↖	15 23 ↖	15 24 ↖	15 24 ↖	15 24 ↖	17 25 ↖	17 25 ↖	17 25 ↖	17 25 ↖	17 25 ↖	20 26 ↖	21 29 ↖	21 29 ↖	22 31 ↖
Houston Pilots B - 11/12	15 24 ↖	15 24 ↖	16 25 ↖	16 25 ↖	16 25 ↖	16 25 ↖	15 24 ↖	15 24 ↖	15 24 ↖	15 24 ↖	15 23 ↖	15 23 ↖	15 23 ↖	14 23 ↖	15 23 ↖	15 24 ↖	16 24 ↖	16 24 ↖	16 24 ↖	16 24 ↖	17 26 ↖	18 28 ↖	18 29 ↖	20 31 ↖
Houston Pilots A - 1 & 2 Bravo	18 26 ↖	20 26 ↖	20 28 ↖	20 29 ↖	20 28 ↖	20 29 ↖	20 28 ↖	18 26 ↖	18 26 ↖	17 26 ↖	17 25 ↖	17 25 ↖	16 25 ↖	15 24 ↖	16 25 ↖	17 26 ↖	17 26 ↖	17 28 ↖	18 28 ↖	18 26 ↖	20 28 ↖	21 30 ↖	22 31 ↖	23 32 ↖

NOTE: This is automated data that may/may not agree with the official BAM thinking that's found on the daily slides. This data should be used as a guide only.

Houston Pilots: SUN. 11/17/2024



Forecast Discussion

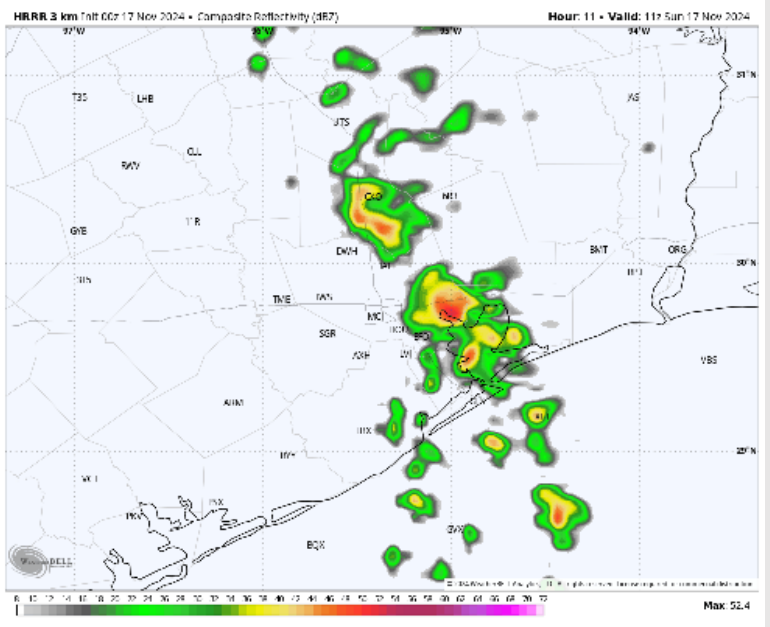
Precip: Scattered to widespread (50-60%) chances of showers/storms will work in after 3AM and continue throughout the day. **Risks will be for wind gusts of 30-40 kts and small hail with localized stronger storms.**

Wind: Winds will be out of the SE throughout the day. **N of Morgan's Point:** Winds at 5 – 10 kts through 7PM, before increasing to 8 – 13 kts for the rest of the evening. **S of Morgan's Point:** Winds at 16 – 21 kts throughout the day. **Non-thunderstorm wind gusts of 20 – 30 kts possible for stations S of Morgan's Point throughout the day, and for Stations N of Morgan's Point after 7 PM.**

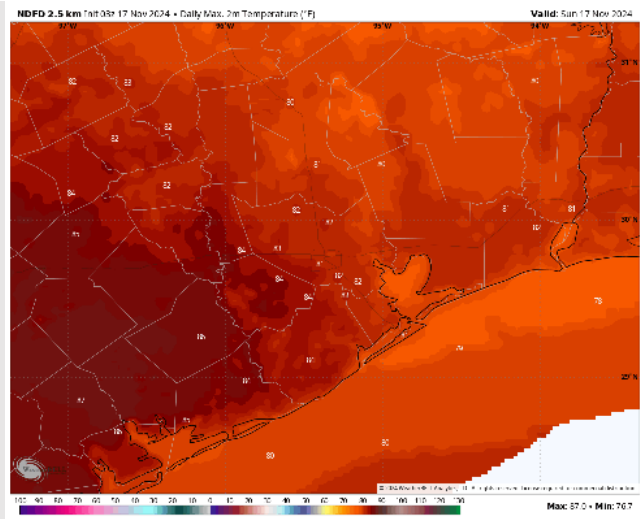
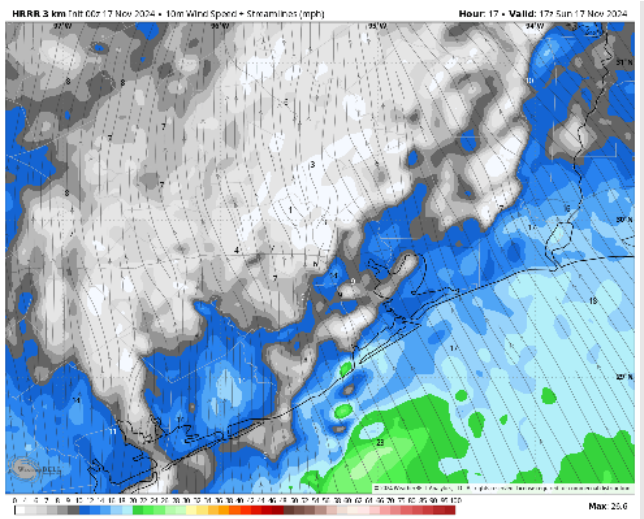
High Temps: **N of Morgan's Point:** Low 80s F. **S of Morgan's Point:** Upper 70s F.

Visibility: No fog concerns for today. Heavy showers/storms can reduce visibilities briefly.

Precip Image: 5 AM CT



Wind Speed:
11 AM CT



High Temps
Today

Houston Pilots: MON. 11/18/2024



Forecast Discussion

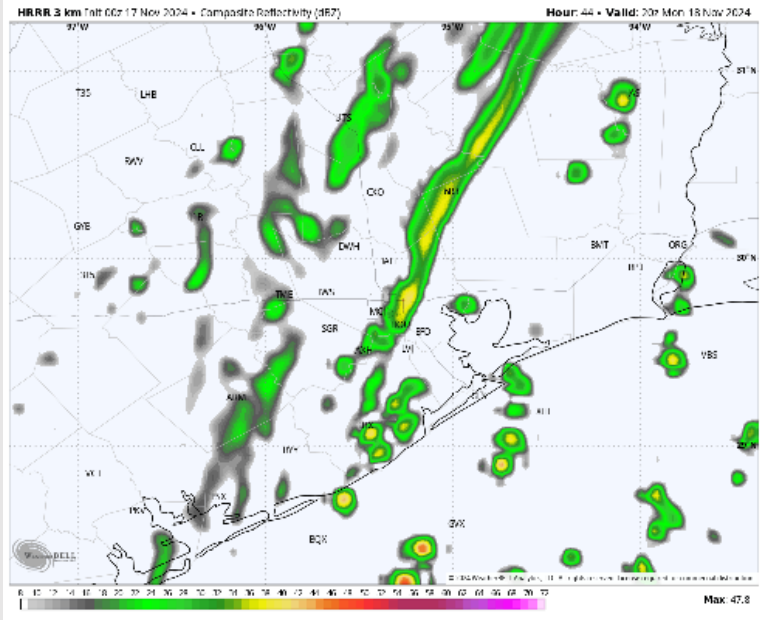
Precip: Scattered showers/storms will work in starting at 2PM Monday and are favored to continue through 6PM before conditions dry out. **Severe storms will be possible with threats of hail and wind gusts of 35-50 kts. An isolated tornado cannot be ruled out.**

Wind: Winds will be out of the SE through 2 PM before transitioning out of the SW for the rest of the day on Monday. **N of Morgan's Point:** Winds will be at 12 - 17 kts through 5 PM before decreasing to 4 - 9 kts for the rest of the day Monday. **S of Morgan's Point:** Winds will be at 20 - 25 kts through 7 PM Monday before decreasing to 8 - 13 kts for the evening. **Non-thunderstorm wind gusts of 25-30 kts will be possible for stations S of Morgan's point.**

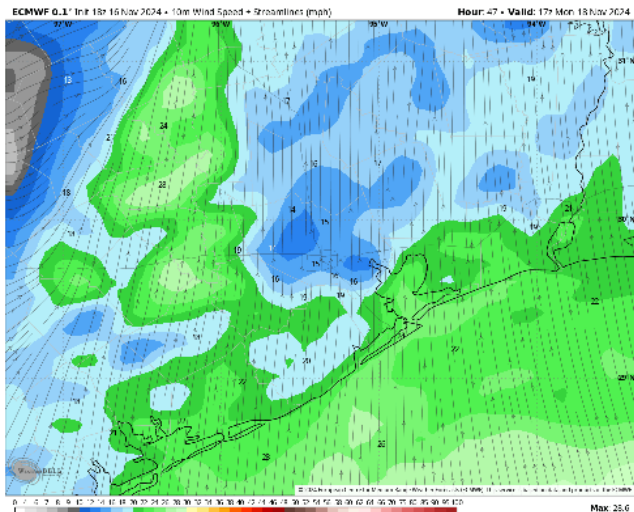
High Temps: **N of Morgan's Point:** Low 80s F. **S of Morgan's Point:** Upper 70s F.

Visibility: No visibility concerns for Monday. Heavy showers/storms can reduce visibilities briefly.

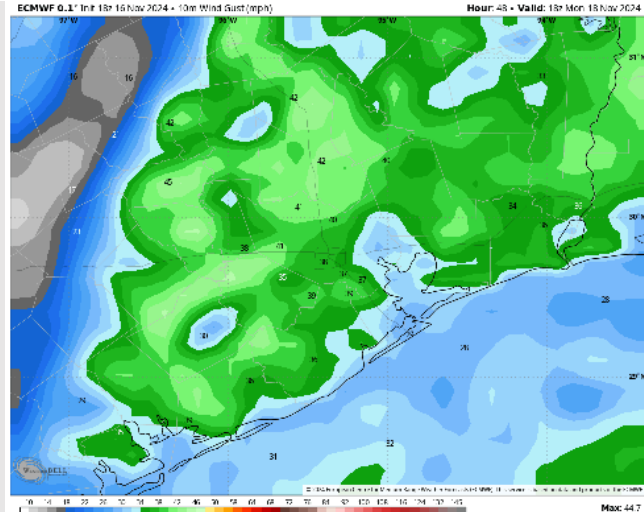
Precip Image: 2 PM CT



Wind Speed
11 AM CT



Max Wind
Gusts Monday



Forecast Discussion

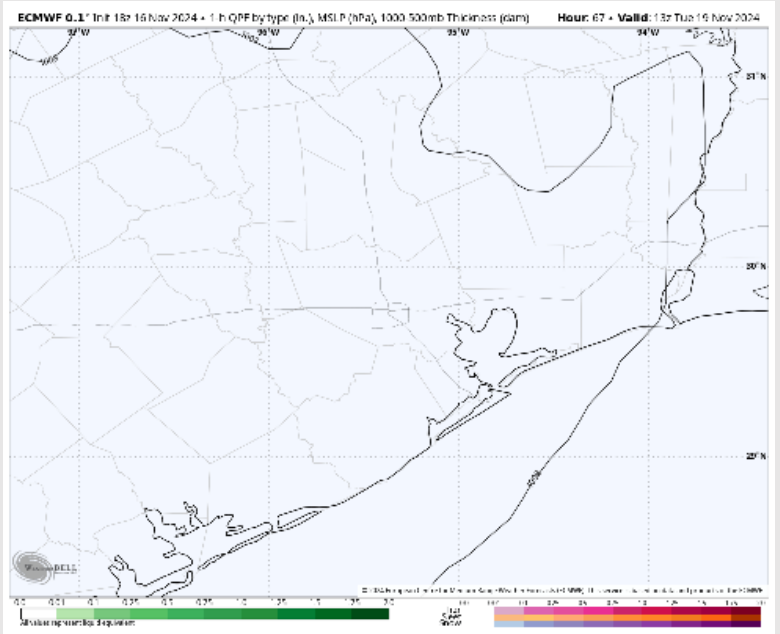
Precip: Favoring dry conditions through Tuesday.

Wind: Winds will be out of the NW throughout the day Tuesday. **N of Morgan's Point:** Winds will be at 2 - 7 kts throughout the day. **S of Morgan's Point:** Winds will be at 5 - 10 kts through Tuesday.

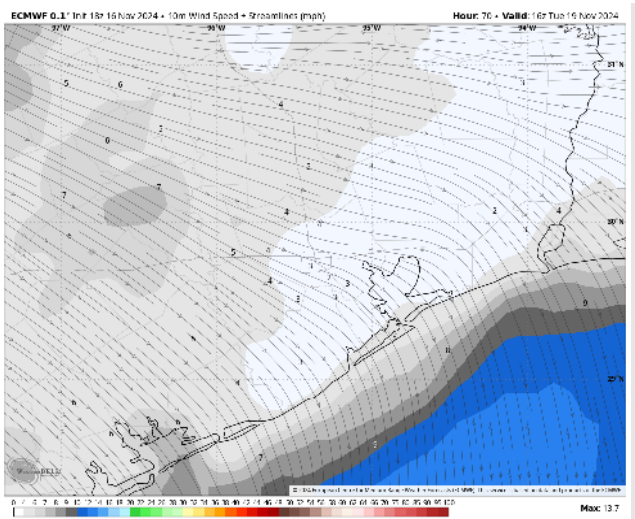
High Temps: **N of Morgan's Point:** Near 80 F. **S of Morgan's Point:** Mid to Upper 70s F.

Visibility: No visibility concerns for Tuesday.

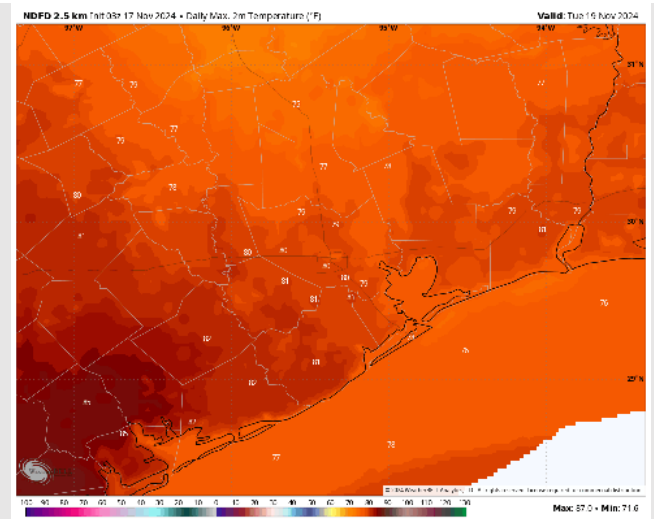
Precip Image: 7 AM CT



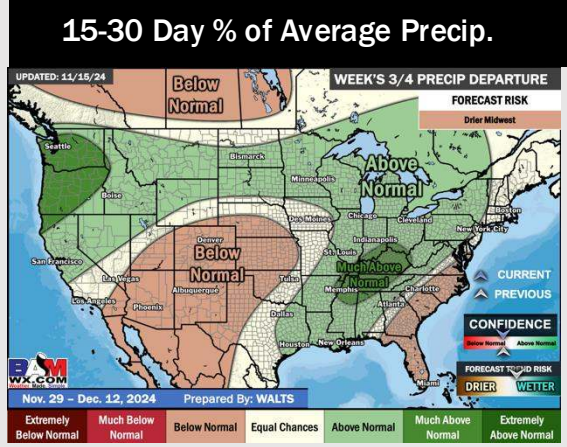
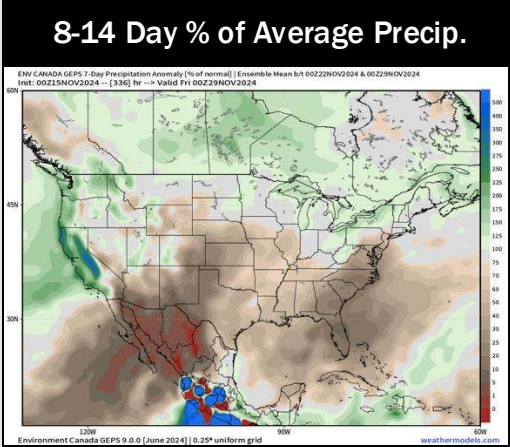
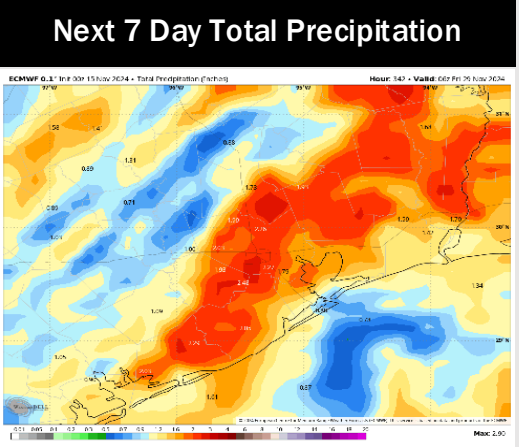
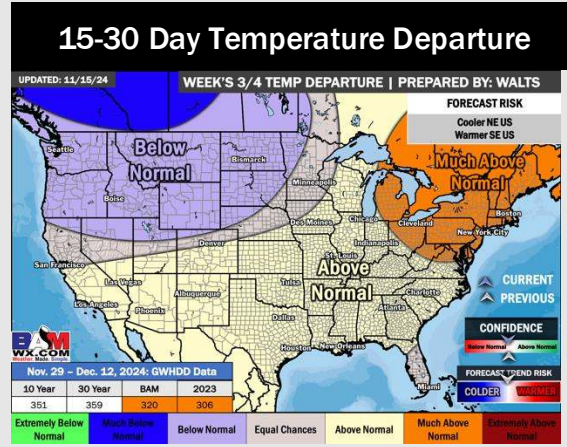
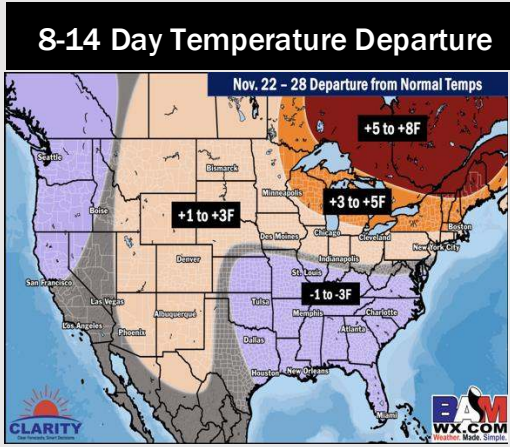
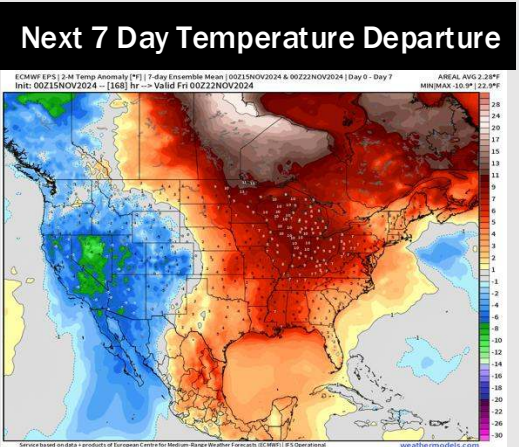
Wind Speed:
10 AM CT



High Temps
Tuesday



Houston Pilots: 11/17/24



- Temps are expected to be above normal for the week 1 timeframe. Favoring scattered rain and storm chances for the beginning of the week 1 timeframe.
- Below normal temperatures are favored for week 2. Favoring precipitation to be below normal.
- Above normal temperatures and above normal precipitation chances are expected for the weeks 3/4 timeframe.