

# Houston Pilots Forecast Package



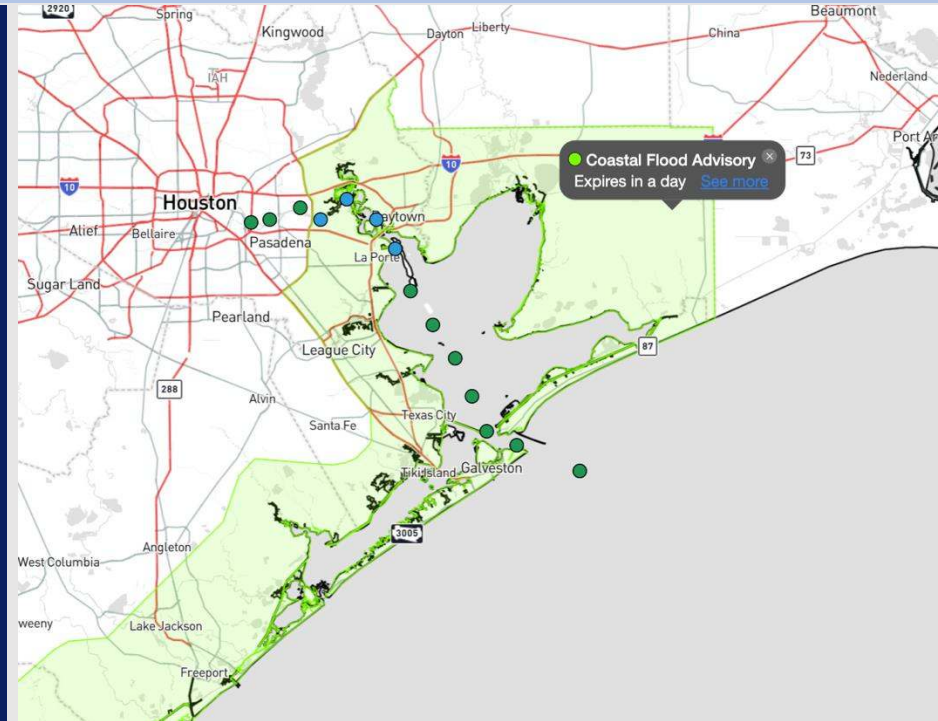
Updated: 10:00 PM CT

Saturday, November 16, 2024

Forecaster: Xander Lowry

## Weather Headlines

- **Showers/Storm chances work into the area SUN and MON. Severe risks will be possible.**
- **Wind gusts for Sunday may reach 35 - 40 kts at times, especially at the Boarding Station.**
- **Wave heights are favored to reach 6' - 8' by 3AM MON. Check wave height slide for more information.**
- **X-Ray Trigger Video Update: [Video](#)**



**Current Radar: 10:00 PM CT**



As always, please do not hesitate to reach out to us with any forecast questions via the chat option on Clarity or our on-call number, **(317)-560-8122** press 1 for forecast questions.

# Houston Pilots Port Trigger Update

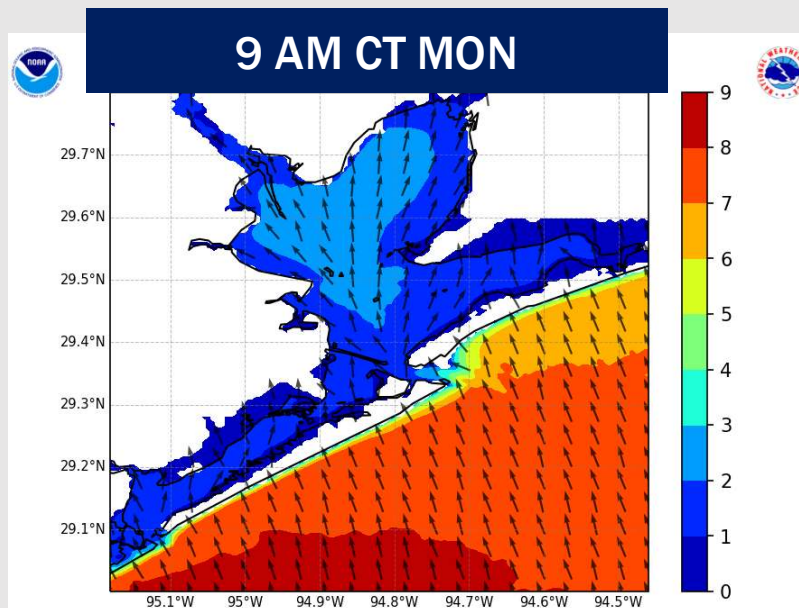
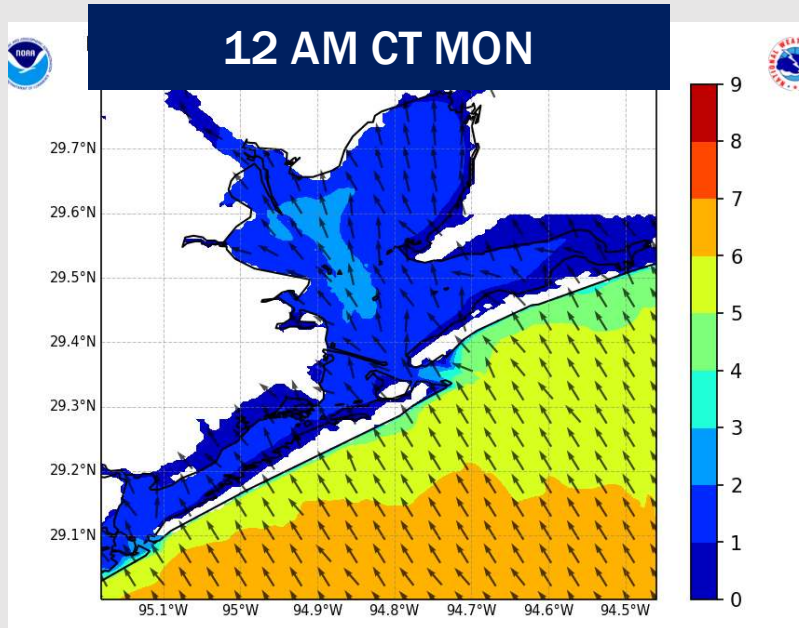


Port Condition	34 KTS+ Sustained Wind Trigger Reached at:	6 Foot Wave Trigger Reached at:	Time Remaining/Trigger Ends At:
Victor	---	---	---
Whiskey	---	---	---
X-Ray	---	3AM SAT	3AM SUN
Yankee	---	3AM SUN	3PM SUN
Zulu	---	3PM SUN	MON 9 PM

Port Condition	Trigger Definition	Trigger Reached?
Victor	Hurricane entering/developing in Gulf of Mexico that's a threat to the area	NO
Whiskey	72 hours prior to predicted sustained winds of 34+ KTS	NO
X-Ray	48 hours prior to predicted sustained winds of 34+ KTS or 6' wave height	NO
Yankee	24 hours prior to predicted sustained winds of 34+ KTS or 6' wave height	NO
Zulu	12 hours prior to predicted sustained winds of 34+ KTS or 6' wave height	NO

**NOTES:** Elevated wind gusts SAT PM and into SUN will help increase wave heights throughout the end of the weekend, with wave heights peaking at 6'-8' by SUN afternoon. Wave heights are expected to drop below 6' by 9PM on Monday.

# Wave Height Forecast Update



Wave heights will begin increasing Sunday AM with wave heights reaching 4'-5' by 12PM Sunday.

Wave heights will reach of 6' - 8' by 3AM Monday, maintaining that height through 12PM before beginning to decrease.

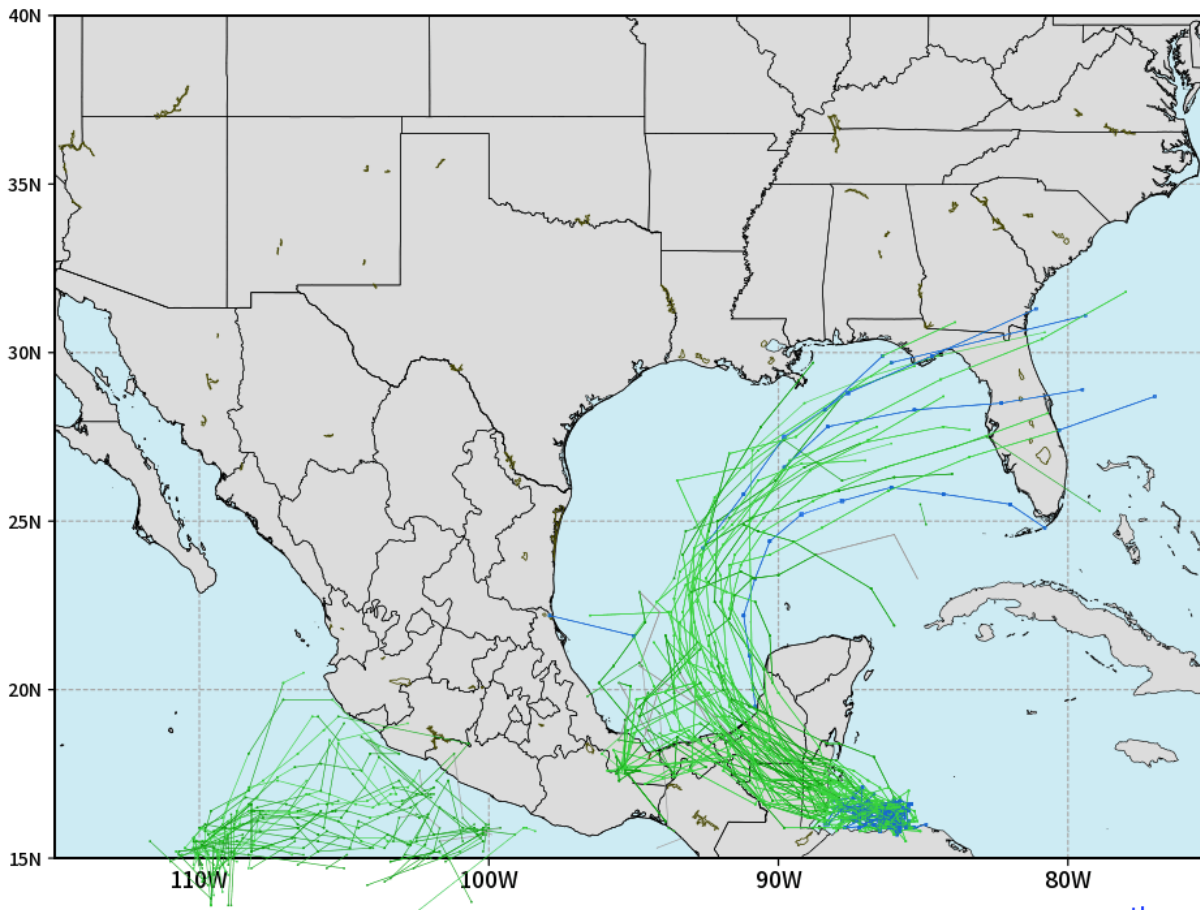
Wave heights are favored to decrease throughout the afternoon Monday dipping below 6' by 9PM Monday

# Houston Pilots Tropical Update

## Tropical Storm Sara Potential Tracks

ECMWF GULF EPS Cyclone Locations --> Next [10-days]  
INIT: 12Z15NOV2024 --> UNTIL 12Z25NOV2024

o-o ENSEMBLE MEAN  
o-o 1000 - 1010 hPa  
o-o 980 - 999 hPa  
o-o 960 - 979 hPa  
o-o 950 - 959 hPa  
o-o < 950 hPa



[weathermodels.com](http://weathermodels.com)

**Tropical Storm Sara is favored to weaken and likely dissipate across the Yucatán Peninsula**

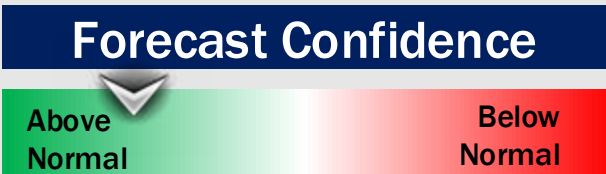
**Confidence remains high this storm will push northeast towards Florida and not impact Houston directly.**

# Houston Pilots Extended Range Visibility Report



## Tuesday 11/18/24

Fog not favored for TUE.



## Wednesday 11/19/24

Fog not favored for WED.



## Thursday 11/20/24

Fog not favored for THU.



## Chance for Fog

Tuesday AM	Unlikely
Tuesday PM	Unlikely
Wednesday AM	Unlikely
Wednesday PM	Unlikely
Thursday AM	Unlikely
Thursday PM	Unlikely



# Houston Pilots Visibility Chart (miles)



## Forecast Confidence



Visibility	Fri 10 pm	Fri 11 pm	Sat 12 am	Sat 1 am	Sat 2 am	Sat 3 am	Sat 4 am	Sat 5 am	Sat 6 am	Sat 7 am	Sat 8 am	Sat 9 am	Sat 10 am	Sat 11 am	Sat 12 pm	Sat 1 pm	Sat 2 pm	Sat 3 pm	Sat 4 pm	Sat 5 pm	Sat 6 pm	Sat 7 pm	Sat 8 pm	Sat 9 pm
Houston Pilots N - 610 Bridge	10	10	10	10	10	10	10	10	10	10	10	10	10	10	10	10	10	10	10	10	10	10	10	10
Houston Pilots M - Kinder 1	10	10	10	10	10	10	10	10	10	10	10	10	10	10	10	10	10	10	10	10	10	10	10	10
Houston Pilots L - Greens Bayou	10	10	10	10	10	10	10	10	10	10	10	10	10	10	10	10	10	10	10	10	10	10	10	10
Houston Pilots K - Shell Crude	10	10	10	10	10	10	10	10	10	10	10	10	10	10	10	10	10	10	10	10	10	10	10	10
Houston Pilots J - Lynchburg Ferries	10	10	10	10	10	10	10	10	10	10	10	10	10	10	10	10	10	10	10	10	10	10	10	10
Houston Pilots I - Exxon 3	10	10	10	10	10	10	10	10	10	10	10	10	10	10	10	10	10	10	10	10	10	10	10	10
Houston Pilots H - Morgans Point	10	10	10	10	10	10	10	10	10	10	10	10	10	10	10	10	10	10	10	10	10	10	10	10
Houston Pilots G - 75/76	10	10	10	10	10	10	10	10	10	10	10	10	10	10	10	10	10	10	10	10	10	10	10	10
Houston Pilots F - 63/64	10	10	10	10	10	10	10	10	10	10	10	10	10	10	10	10	10	10	10	10	10	10	10	10
Houston Pilots E - 51/52	10	10	10	10	10	10	10	10	10	10	10	10	10	10	10	10	10	10	10	10	10	10	10	10
Houston Pilots D - 37/38	10	10	10	10	10	10	10	10	10	10	10	10	10	10	10	10	10	10	10	10	10	10	10	10
Houston Pilots C - 25/26	10	10	10	10	10	10	10	10	10	10	10	10	10	10	10	10	10	10	10	10	10	10	10	10
Houston Pilots B - 11/12	10	10	10	10	10	10	10	10	10	10	10	10	10	10	10	10	10	10	10	10	10	10	10	10
Houston Pilots A - 1 & 2 Bravo	10	10	10	10	10	10	10	10	10	10	10	10	10	10	10	10	10	10	10	10	10	10	10	10

**NOTE: This is automated data that may/may not agree with the official BAM thinking that's found on the daily slides or special visibility report slides. This data should be used as a guide only**

# Houston Pilots Wind Chart



## Forecast Confidence



Sustained wind 10 Knots  
 Gusts 15 Knots  
 Wind from the SE

## Example



Wind	Fri 10 pm	Fri 11 pm	Sat 12 am	Sat 1 am	Sat 2 am	Sat 3 am	Sat 4 am	Sat 5 am	Sat 6 am	Sat 7 am	Sat 8 am	Sat 9 am	Sat 10 am	Sat 11 am	Sat 12 pm	Sat 1 pm	Sat 2 pm	Sat 3 pm	Sat 4 pm	Sat 5 pm	Sat 6 pm	Sat 7 pm	Sat 8 pm	Sat 9 pm
Houston Pilots N - 610 Bridge	3 9 ←	3 8 ←	3 8 ←	3 8 ←	3 8 ←	3 8 ←	3 8 ←	3 8 ←	3 8 ←	3 9 ←	5 9 ←	5 10 ←	6 12 ←	6 13 ←	7 14 ←	8 15 ←	8 17 ←	9 17 ←	9 18 ←	9 18 ←	9 18 ←	8 16 ←	8 16 ←	8 16 ←
Houston Pilots M - Kinder 1	3 9 ←	3 8 ←	3 8 ←	3 9 ←	3 8 ←	3 8 ←	3 8 ←	3 8 ←	3 8 ←	5 9 ←	5 9 ←	5 10 ←	6 12 ←	6 13 ←	7 14 ←	8 15 ←	8 17 ←	9 17 ←	10 18 ←	9 18 ←	9 18 ←	8 16 ←	8 16 ←	8 16 ←
Houston Pilots L - Greens Bayou	5 9 ←	3 8 ←	3 9 ←	5 9 ←	3 9 ←	3 9 ←	3 9 ←	3 9 ←	3 9 ←	5 9 ←	5 9 ←	6 10 ←	6 12 ←	6 14 ←	7 15 ←	8 16 ←	9 17 ←	9 18 ←	10 20 ←	10 18 ←	9 18 ←	8 16 ←	8 16 ←	8 17 ←
Houston Pilots K - Shell Crude	5 9 ←	5 9 ←	3 9 ←	5 9 ←	3 9 ←	3 9 ←	3 9 ←	3 9 ←	3 9 ←	5 9 ←	5 9 ←	6 10 ←	6 12 ←	6 14 ←	8 15 ←	8 16 ←	9 17 ←	9 18 ←	10 18 ←	10 18 ←	9 17 ←	8 16 ←	8 16 ←	8 17 ←
Houston Pilots J - Lynchburg Ferries	3 9 ←	3 8 ←	3 8 ←	3 9 ←	3 9 ←	3 9 ←	3 9 ←	3 9 ←	3 9 ←	3 9 ←	5 10 ←	5 10 ←	6 12 ←	6 14 ←	7 15 ←	8 16 ←	9 17 ←	10 18 ←	10 18 ←	10 18 ←	9 17 ←	8 16 ←	8 16 ←	8 17 ←
Houston Pilots I - Exxon 3	8 12 ←	8 12 ←	8 12 ←	8 12 ←	8 12 ←	8 12 ←	8 12 ←	8 12 ←	7 12 ←	7 10 ←	8 12 ←	8 12 ←	8 13 ←	8 15 ←	9 16 ←	10 17 ←	12 18 ←	12 18 ←	13 20 ←	13 18 ←	13 18 ←	12 17 ←	13 17 ←	13 17 ←
Houston Pilots H - Morgans Point	8 12 ←	8 12 ←	8 12 ←	8 12 ←	8 12 ←	8 12 ←	8 12 ←	8 12 ←	7 12 ←	7 10 ←	8 12 ←	8 13 ←	8 15 ←	8 16 ←	9 17 ←	10 18 ←	12 18 ←	12 18 ←	13 18 ←	13 18 ←	13 18 ←	12 17 ←	13 17 ←	13 18 ←
Houston Pilots G - 75/76	10 14 ←	10 14 ←	10 14 ←	10 14 ←	10 14 ←	10 14 ←	10 14 ←	10 14 ←	9 14 ←	9 14 ←	9 14 ←	9 15 ←	9 15 ←	9 15 ←	10 17 ←	10 18 ←	12 20 ←	13 20 ←	13 20 ←	13 20 ←	13 20 ←	13 18 ←	13 18 ←	15 20 ←
Houston Pilots F - 63/64	10 14 ←	10 14 ←	10 14 ←	10 15 ←	10 15 ←	10 15 ←	10 15 ←	10 15 ←	10 15 ←	10 14 ←	10 15 ←	10 15 ←	10 15 ←	10 15 ←	10 17 ←	10 18 ←	10 18 ←	12 20 ←	13 20 ←	13 20 ←	13 20 ←	13 17 ←	13 18 ←	15 20 ←
Houston Pilots E - 51/52	10 14 ←	10 15 ←	10 15 ←	10 15 ←	10 15 ←	10 15 ←	10 16 ←	10 16 ←	10 16 ←	10 15 ←	10 16 ←	10 16 ←	10 16 ←	10 16 ←	10 17 ←	10 18 ←	12 18 ←	12 18 ←	12 18 ←	13 18 ←	13 20 ←	13 17 ←	14 18 ←	15 20 ←
Houston Pilots D - 37/38	10 15 ←	10 15 ←	10 15 ←	10 15 ←	10 16 ←	10 16 ←	10 16 ←	10 16 ←	10 16 ←	10 16 ←	10 16 ←	10 16 ←	10 16 ←	10 16 ←	10 17 ←	10 18 ←	12 18 ←	12 18 ←	12 18 ←	13 20 ←	13 20 ←	13 18 ←	13 18 ←	14 21 ←
Houston Pilots C - 25/26	10 15 ←	10 15 ←	10 16 ←	10 16 ←	10 16 ←	10 16 ←	10 17 ←	10 17 ←	10 16 ←	10 16 ←	10 16 ←	10 16 ←	10 16 ←	10 16 ←	10 17 ←	10 18 ←	12 17 ←	12 17 ←	12 17 ←	13 20 ←	13 20 ←	13 17 ←	13 18 ←	14 21 ←
Houston Pilots B - 11/12	9 15 ←	9 15 ←	9 16 ←	10 16 ←	10 16 ←	10 17 ←	10 17 ←	10 17 ←	10 16 ←	10 16 ←	10 16 ←	10 16 ←	10 16 ←	10 16 ←	10 17 ←	10 17 ←	10 18 ←	10 17 ←	10 17 ←	12 17 ←	12 17 ←	12 18 ←	13 20 ←	13 21 ←
Houston Pilots A - 1 & 2 Bravo	12 17 ←	12 17 ←	13 17 ←	13 17 ←	13 18 ←	13 18 ←	13 18 ←	13 18 ←	13 18 ←	13 18 ←	13 17 ←	13 18 ←	13 17 ←	13 18 ←	13 17 ←	12 18 ←	12 18 ←	12 18 ←	12 18 ←	13 20 ←	13 20 ←	14 21 ←	15 22 ←	16 23 ←

NOTE: This is automated data that may/may not agree with the official BAM thinking that's found on the daily slides. This data should be used as a guide only.

# Houston Pilots: SAT. 11/16/2024



## Forecast Discussion

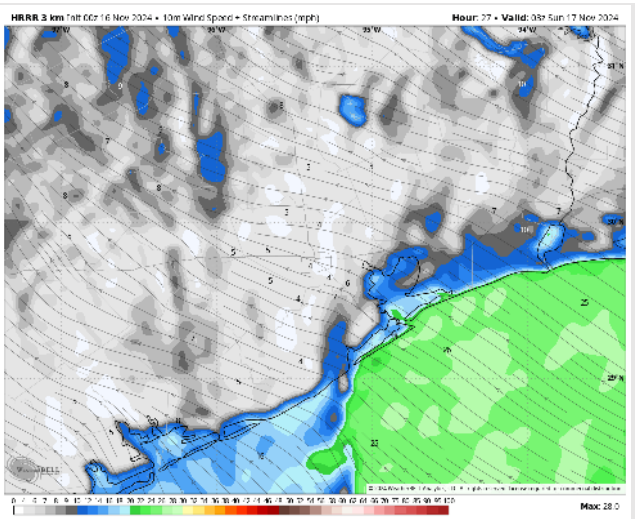
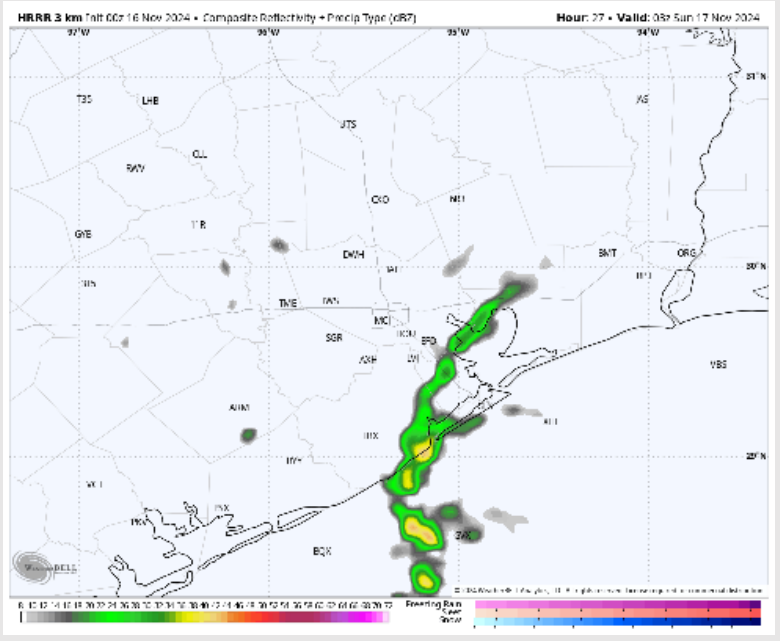
**Precip:** Favoring mostly dry conditions today, aside from isolated showers working in after 9PM for primarily stations S of Morgan's Point.

**Wind:** Winds will be out of the E to start the day before shifting out of the SE come 12PM and will remain there for the rest of the day today. **N of Morgan's Point:** Winds will be at 3 – 9 kts throughout the day. **S of Morgan's Point:** Winds will be at 5 – 10 kts through 7PM before increasing to 17 – 22 kts. **Non-thunderstorms wind gusts of 25-30 kts will be possible for stations S of Morgan's point after 7PM.**

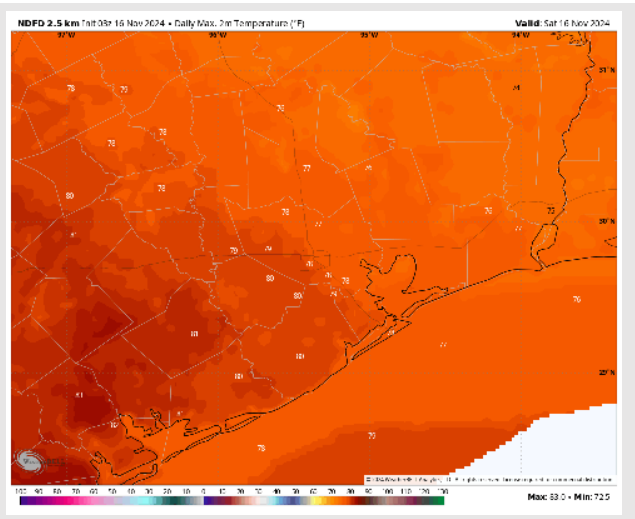
**High Temps:** **N of Morgan's Point:** Upper 70s F. **S of Morgan's Point:** Mid to Upper 70s F.

**Visibility:** No fog concerns for today.

## Precip Image: 9 PM CT



Wind Speed:  
9 PM CT



High Temps  
Today



# Houston Pilots: SUN. 11/17/2024



## Forecast Discussion

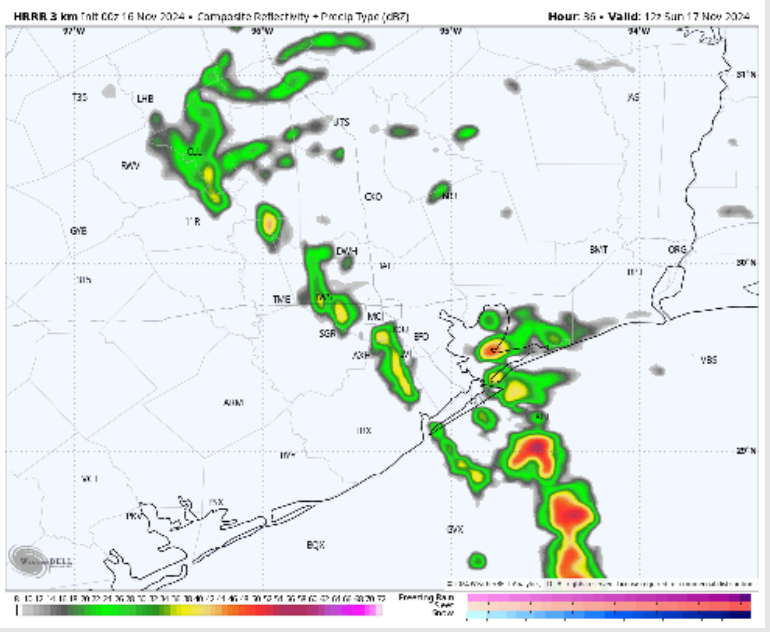
**Precip:** Scattered to widespread (50-60%) chances of showers/storms will work in after 5AM and continue throughout the day Sunday. **Risks will be for wind gusts of 30-40 kts and small hail with localized stronger storms.**

**Wind:** Winds will be out of the SE throughout the day on Sunday. **N of Morgan's Point:** Winds at 5 – 10 kts through 7PM, before increasing to 8 – 13 kts for the rest of the evening Sunday. **S of Morgan's Point:** Winds at 16 – 21 kts throughout the day on Sunday. **Non-thunderstorm wind gusts of 20 – 30 kts possible for stations S of Morgan's Point throughout Sunday.**

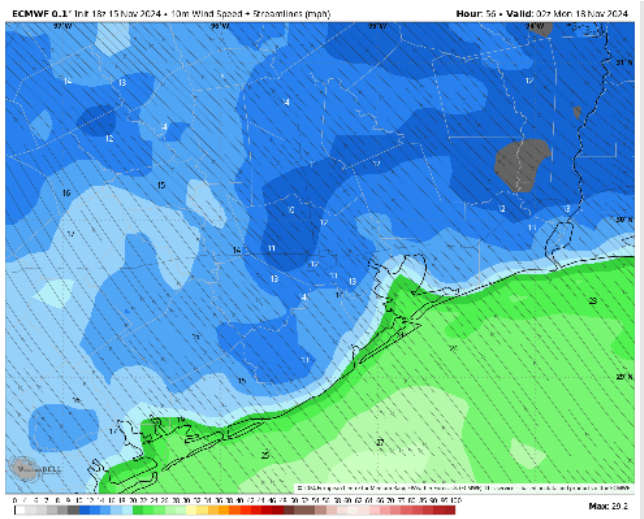
**High Temps:** **N of Morgan's Point:** Low 80s F. **S of Morgan's Point:** Upper 70s F.

**Visibility:** No visibility concerns for Sunday. Heavy showers/storms can reduce visibilities briefly.

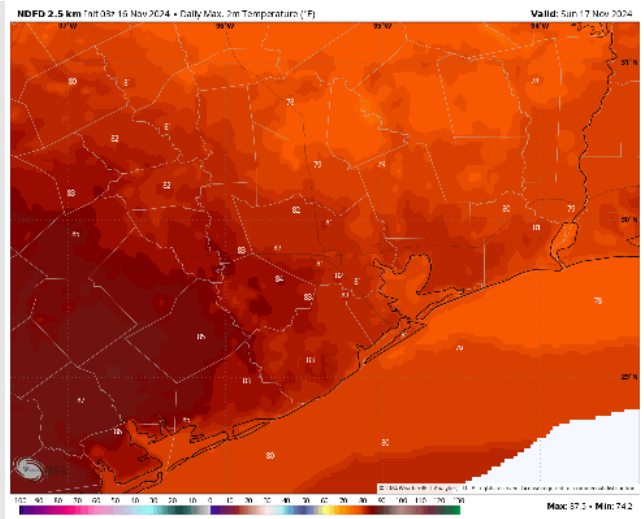
## Precip Image: 6 AM CT



**Wind Speed:  
8 PM CT**



**High Temps  
Sunday**



# Houston Pilots: MON. 11/18/2024



## Forecast Discussion

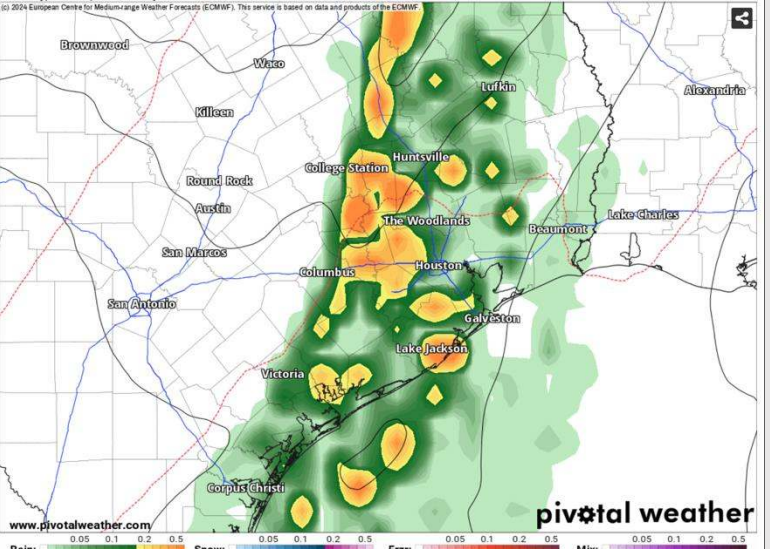
**Precip:** Widespread showers/storms will work in starting at 10AM Monday and are favored to continue through 6PM before conditions dry out. **Severe storms will be possible with threats of large hail, wind gusts of 35-45 kts, and an isolated tornado cannot be ruled out.**

**Wind:** Winds will be out of the S/SSE through the day on Monday. **N of Morgan's Point:** Winds will be at 9 - 14 kts through 5PM before decreasing to 4 - 9 kts for the rest of the day Monday. **S of Morgan's Point:** Winds will be at 22 - 27 kts through 9PM Monday before decreasing to 8 - 13 kts for the rest of the day Monday. **Non-thunderstorms wind gusts of 35- 40 kts will be possible for stations S of Morgan's point.**

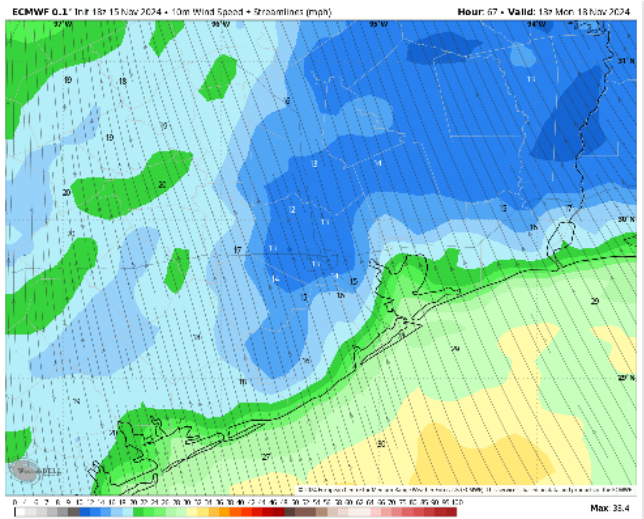
**High Temps:** **N of Morgan's Point:** Low 80s F. **S of Morgan's Point:** Upper 70s F.

**Visibility:** No visibility concerns for Monday. Heavy showers/storms can reduce visibilities briefly.

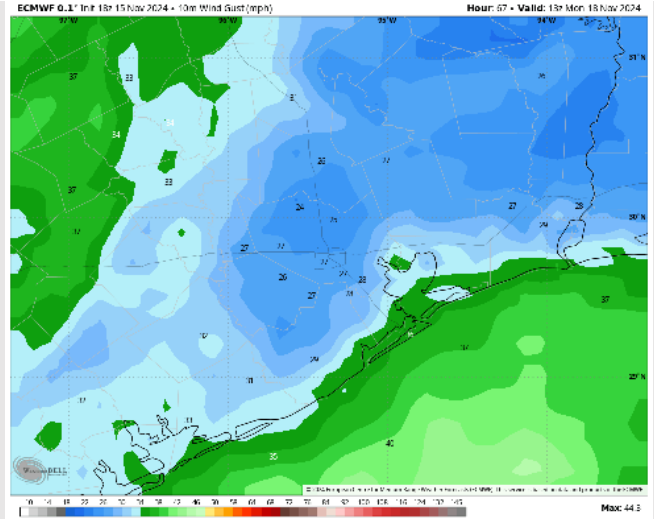
## Precip Image: 12 PM CT



Wind Speed  
7 AM CT



Max Wind  
Gusts Monday

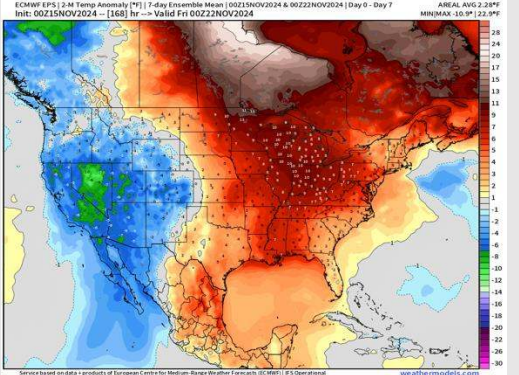




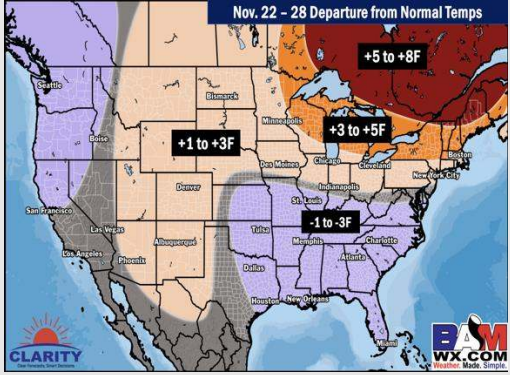
# Houston Pilots: 11/16/24



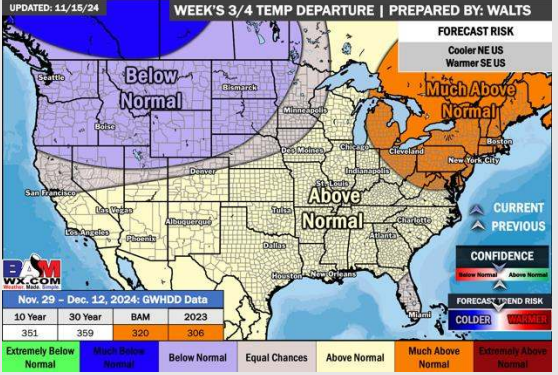
## Next 7 Day Temperature Departure



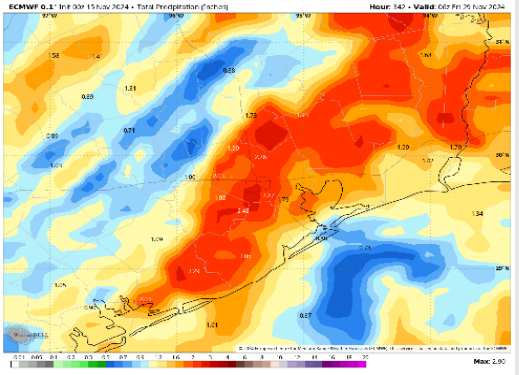
## 8-14 Day Temperature Departure



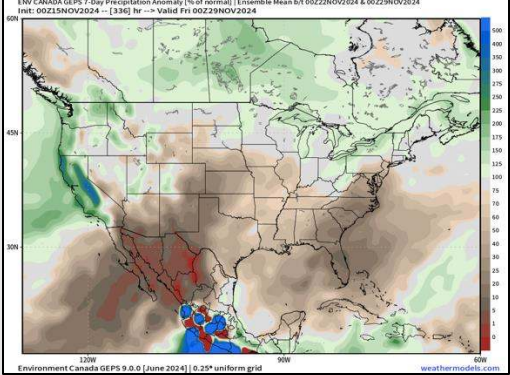
## 15-30 Day Temperature Departure



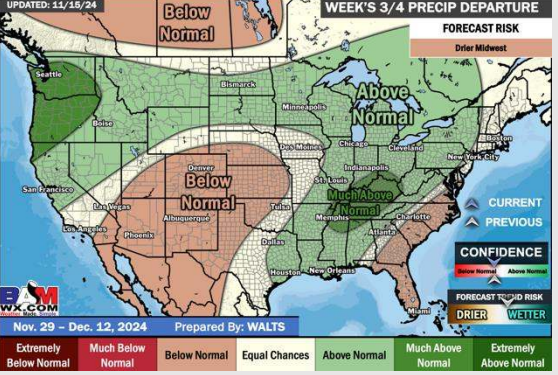
## Next 7 Day Total Precipitation



## 8-14 Day % of Average Precip.



## 15-30 Day % of Average Precip.



- Temps are expected to be above normal for the week 1 timeframe. Favoring scattered rain and storm chances for the beginning of the week 1 timeframe.
- Below normal temperatures are favored for week 2. Favoring precipitation to be below normal.
- Above normal temperatures and above normal precipitation chances are expected for the weeks 3/4 timeframe.