

# Houston Pilots Forecast Package



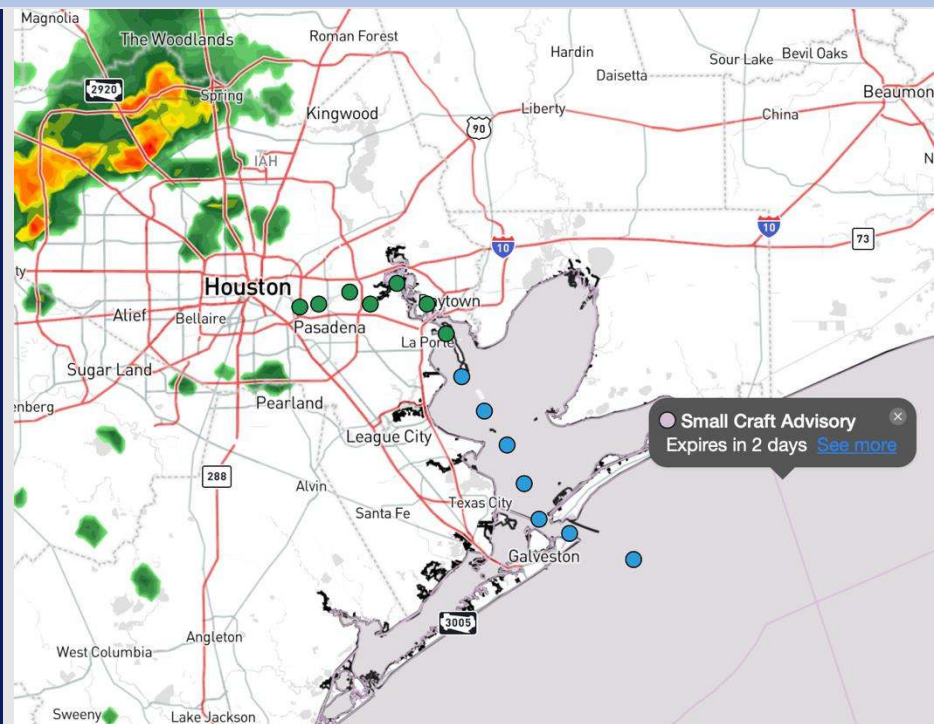
Updated: 9:30 PM CT

Sunday, November 3, 2024

Forecaster: Tyler Riggles

## Weather Headlines

- **Gusty winds of 25+ kts will be in play through early TUE AM.**
- **Wave heights will begin to increase SUN PM and into MON. Monitoring potential for 6'+ wave heights on MON. X-Ray trigger currently in effect, Yankee trigger to go into effect 12 AM SUN.**
- **Monitoring potential for tropical development and low-end impact chances over the next 7-10 Days**
- **Latest Video: [X-Ray/Yankee Port Condition Update](#)**



**Current Radar: 9:00 PM CT**



As always, please do not hesitate to reach out to us with any forecast questions via the chat option on Clarity or our on-call number, **(317)-560-8122** press 1 for forecast questions.

# Houston Pilots Port Trigger Update

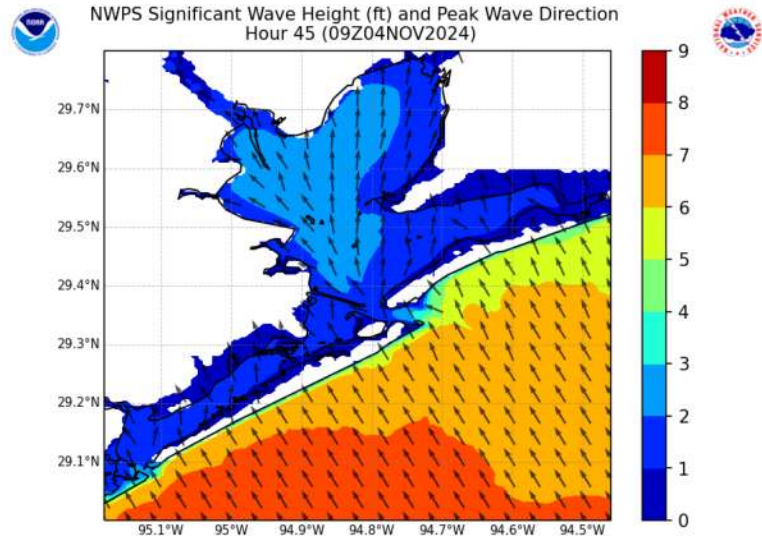


Port Condition	34 KTS+ Sustained Wind Trigger Reached at:	6 Foot Wave Trigger Reached at:	Time Remaining/Trigger Ends At:
Victor	---	---	---
Whiskey	---	---	---
X-Ray	---	<b>Current</b>	<b>12 AM SUN</b>
Yankee	---	<b>12 AM SUN</b>	<b>12 PM SUN</b>
Zulu	---	<b>12 PM SUN</b>	<b>6 AM TUE</b>

Port Condition	Trigger Definition	Trigger Reached?
Victor	Hurricane entering/developing in Gulf of Mexico that's a threat to the area	<b>NO</b>
Whiskey	72 hours prior to predicted sustained winds of 34+ KTS	<b>NO</b>
X-Ray	48 hours prior to predicted sustained winds of 34+ KTS or <b>6' wave height</b>	<b>YES</b>
Yankee	24 hours prior to predicted sustained winds of 34+ KTS or <b>6' wave height</b>	<b>NO</b>
Zulu	12 hours prior to predicted sustained winds of 34+ KTS or <b>6' wave height</b>	<b>NO</b>

**NOTES: Strong winds will allow for wave heights to increase throughout the weekend (SUN into MON). Wave heights are expected to reach/exceed 6' early MON AM and will linger through TUE AM.**

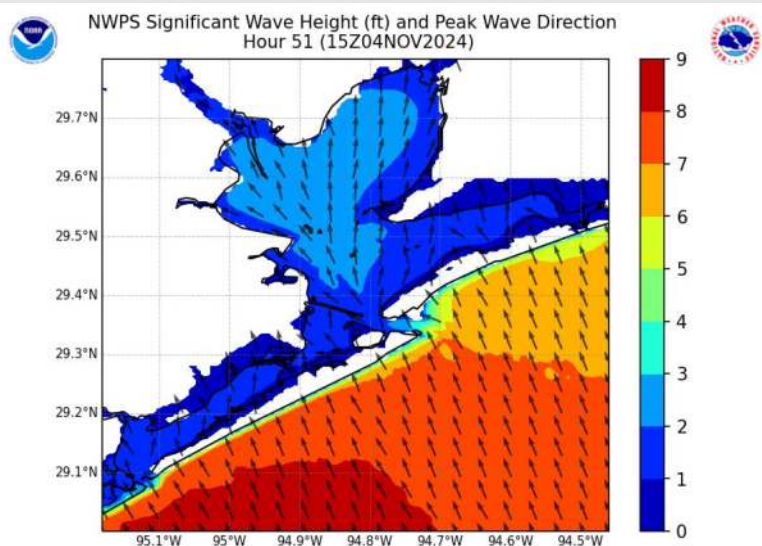
# Wave Height Forecast Update



**3 AM CT MON**

Strong southerly winds SUN PM and into MON AM will bring elevated wave heights near of 5' – 7' by 12 AM MON.

Wave heights after 12AM MON are favored to continue to increase with peak wave heights approaching 6' – 8' by 9AM MON morning. After 9AM MON wave heights will slowly decrease, dipping below 6' by 6AM TUE.



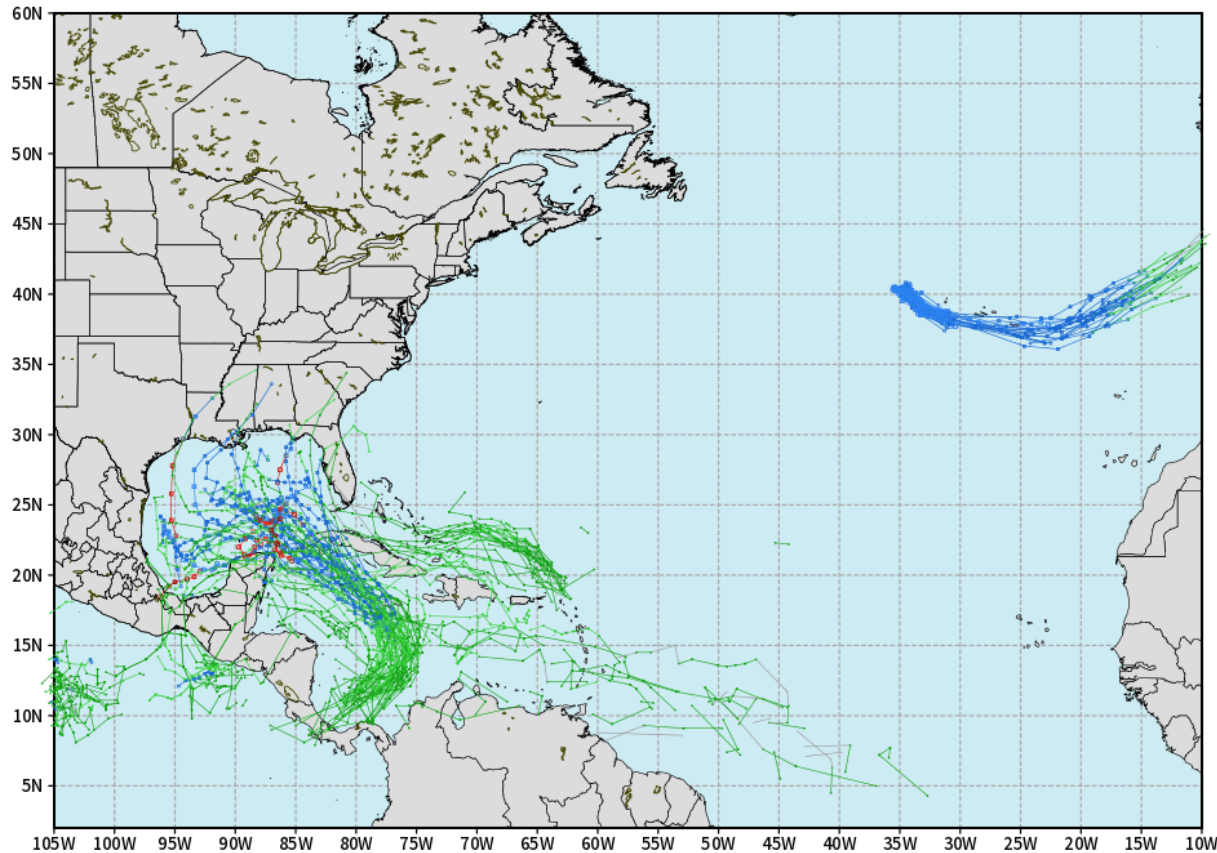
**9 AM CT MON**

# Houston Pilots Tropical Update

## European Tropical Tracks - Next 10 Days

ECMWF ATLANTIC EPS Cyclone Locations --> Next [10-days]  
INIT: 00Z02NOV2024 --> UNTIL 00Z12NOV2024

o-o ENSEMBLE MEAN  
o-o 1000 - 1010 hPa  
o-o 980 - 999 hPa  
o-o 960 - 979 hPa  
o-o 950 - 959 hPa  
o-o < 950 hPa



[weathermodels.com](http://weathermodels.com)

We are monitoring increasing potential for tropical formation in the Western Caribbean near the end of this weekend and into early next week.

Confidence remains low in exact track, however potential into the C/W Gulf of Mexico will need to be monitored over the next 7 days.

Direct impacts for HOU area over the next 7-10 days cannot be 100% ruled out.

# Houston Pilots Tropical Update



## CLARITY Potential Tropical Development

TROPICAL INSIGHT 10:30 PM ET Saturday, November 2<sup>nd</sup>, 2024 Forecaster: Lowry



**TIMING: SUN 11/3 – Thu 11/7**

### FORECAST NOTES:

- ✓ Tropical Development is favored SUN PM and into MON PM in the W Caribbean
- ✓ Exact details on potential track/intensity remain uncertain currently, however a NW/N track into the Gulf of Mexico is favored/
- ✓ Locations in Pink highlights favored progression of system regardless of development. Formation chances are at 80%



# Houston Pilots Extended Range Visibility Report



## Wednesday 11/6/24

Fog not favored for TUE.

### Forecast Confidence



## Thursday 11/7/24

Fog not favored for WED.

### Forecast Confidence



## Friday 11/8/24

Fog not favored for THU.

### Forecast Confidence



## Chance for Fog

Wednesday AM	Unlikely
Wednesday PM	Unlikely
Thursday AM	Unlikely
Thursday PM	Unlikely
Friday AM	Unlikely
Friday PM	Unlikely

# Houston Pilots Visibility Chart (miles)



## Forecast Confidence



Visibility	Sat 10 pm	Sat 11 pm	Sun 12 am	Sun 1 am	Sun 1 am	Sun 2 am	Sun 3 am	Sun 4 am	Sun 5 am	Sun 6 am	Sun 7 am	Sun 8 am	Sun 9 am	Sun 10 am	Sun 11 am	Sun 12 pm	Sun 1 pm	Sun 2 pm	Sun 3 pm	Sun 4 pm	Sun 5 pm	Sun 6 pm	Sun 7 pm	Sun 8 pm	
Houston Pilots N - 610 Bridge	7.9	7.9	9	9	6.9	7.9	9	9	7.9	7.9	9	7.9	9	10	10	10	10	10	10	10	10	10	10	10	
Houston Pilots M - Kinder 1	7.9	7.9	9	9	6.9	7.9	9	9	9	9	9	7.9	9	10	10	10	10	10	10	10	10	10	10	10	
Houston Pilots L - Greens Bayou	7.9	7.9	9	9	9	7.9	10	9	10	9	10	7.9	9	10	10	10	10	10	10	10	10	10	10	10	
Houston Pilots K - Shell Crude	7.9	7.9	9	9	9	7.9	10	9	10	9	10	9	9	10	10	10	10	10	10	10	10	10	10	10	
Houston Pilots J - Lynchburg Ferries	7.9	9	10	9	9	7.9	10	9	10	9	10	9	9	10	10	10	10	10	10	10	10	10	10	10	
Houston Pilots I - Exxon 3	7.9	7.9	9	9	9	7.9	10	9	10	9	10	9	9	10	10	10	10	10	10	10	10	10	10	10	
Houston Pilots H - Morgans Point	7.9	9	9	9	9	7.9	10	9	10	9	10	9	9	10	10	10	10	10	10	10	10	10	10	10	
Houston Pilots G - 75/76	7.9	9	10	9	9	7.9	9	10	10	10	10	10	10	10	10	10	10	10	9	10	9	6.9	9	9	
Houston Pilots F - 63/64	7.9	9	10	9	9	9	10	10	10	10	10	10	10	10	10	10	10	10	9	10	9	6.9	9	9	
Houston Pilots E - 51/52	7.9	9	10	9	10	9	10	10	10	10	10	10	10	10	10	10	10	10	9	10	9	6.9	9	9	
Houston Pilots D - 37/38	9	9	10	10	10	9	10	10	10	10	10	10	10	10	10	10	10	10	9	10	9	6.9	9	9	
Houston Pilots C - 25/26	7.9	9	10	9	10	9	10	10	10	10	10	10	10	10	10	10	10	10	9	10	9	6.9	9	9	
Houston Pilots B - 11/12	9	10	10	10	10	10	10	10	10	10	10	10	10	10	10	10	10	10	9	10	9	6.9	9	9	
Houston Pilots A - 1 & 2 Bravo	10	10	10	10	10	10	10	10	10	10	10	10	10	10	10	10	10	10	10	10	10	10	10	10	9

**NOTE: This is automated data that may/may not agree with the official BAM thinking that's found on the daily slides or special visibility report slides. This data should be used as a guide only**

# Houston Pilots Wind Chart



## Forecast Confidence



Sustained wind 10 Knots  
 Gusts 15 Knots  
 Wind from the SE

**Example**  
 10  
 15  
 ↙

Wind	Sat 10 pm	Sat 11 pm	Sun 12 am	Sun 1 am	Sun 1 am	Sun 2 am	Sun 3 am	Sun 4 am	Sun 5 am	Sun 6 am	Sun 7 am	Sun 8 am	Sun 9 am	Sun 10 am	Sun 11 am	Sun 12 pm	Sun 1 pm	Sun 2 pm	Sun 3 pm	Sun 4 pm	Sun 5 pm	Sun 6 pm	Sun 7 pm	Sun 8 pm
Houston Pilots N - 610 Bridge	10 ↖	10 ↖	12 ↖	10 ↖	10 ↖	10 ↖	10 ↖	10 ↖	10 ↖	10 ↖	10 ↖	10 ↖	13 ↖	13 ↖	14 ↖	14 ↖	14 ↖	15 ↖	15 ↖	15 ↖	15 ↖	15 ↖	13 ↖	14 ↖
Houston Pilots M - Kinder 1	10 ↖	10 ↖	12 ↖	10 ↖	10 ↖	10 ↖	10 ↖	10 ↖	10 ↖	10 ↖	10 ↖	10 ↖	12 ↖	13 ↖	14 ↖	14 ↖	14 ↖	15 ↖	16 ↖	15 ↖	15 ↖	15 ↖	13 ↖	14 ↖
Houston Pilots L - Greens Bayou	10 ↖	10 ↖	12 ↖	12 ↖	10 ↖	10 ↖	10 ↖	10 ↖	10 ↖	10 ↖	10 ↖	10 ↖	12 ↖	13 ↖	14 ↖	14 ↖	14 ↖	16 ↖	16 ↖	15 ↖	15 ↖	15 ↖	13 ↖	15 ↖
Houston Pilots K - Shell Crude	10 ↖	10 ↖	12 ↖	10 ↖	10 ↖	10 ↖	10 ↖	10 ↖	10 ↖	10 ↖	10 ↖	10 ↖	13 ↖	13 ↖	14 ↖	14 ↖	14 ↖	15 ↖	16 ↖	15 ↖	15 ↖	15 ↖	14 ↖	15 ↖
Houston Pilots J - Lynchburg Ferries	10 ↖	10 ↖	10 ↖	10 ↖	10 ↖	10 ↖	10 ↖	10 ↖	10 ↖	10 ↖	9 ↖	10 ↖	12 ↖	13 ↖	14 ↖	15 ↖	16 ↖	16 ↖	16 ↖	16 ↖	16 ↖	16 ↖	15 ↖	14 ↖
Houston Pilots I - Exxon 3	16 ↖	16 ↖	17 ↖	17 ↖	17 ↖	17 ↖	17 ↖	17 ↖	17 ↖	16 ↖	15 ↖	16 ↖	16 ↖	16 ↖	17 ↖	17 ↖	18 ↖	18 ↖	18 ↖	17 ↖	18 ↖	20 ↖	18 ↖	20 ↖
Houston Pilots H - Morgans Point	16 ↖	16 ↖	17 ↖	17 ↖	17 ↖	17 ↖	17 ↖	17 ↖	17 ↖	16 ↖	15 ↖	16 ↖	16 ↖	16 ↖	17 ↖	17 ↖	17 ↖	18 ↖	18 ↖	17 ↖	18 ↖	18 ↖	18 ↖	20 ↖
Houston Pilots G - 75/76	17 ↖	17 ↖	18 ↖	20 ↖	20 ↖	20 ↖	20 ↖	20 ↖	20 ↖	18 ↖	17 ↖	18 ↖	18 ↖	17 ↖	18 ↖	18 ↖	18 ↖	20 ↖	20 ↖	20 ↖	20 ↖	20 ↖	20 ↖	21 ↖
Houston Pilots F - 63/64	17 ↖	17 ↖	18 ↖	20 ↖	20 ↖	20 ↖	20 ↖	20 ↖	20 ↖	20 ↖	18 ↖	18 ↖	18 ↖	17 ↖	18 ↖	18 ↖	17 ↖	18 ↖	20 ↖	20 ↖	20 ↖	20 ↖	20 ↖	21 ↖
Houston Pilots E - 51/52	17 ↖	17 ↖	18 ↖	20 ↖	20 ↖	20 ↖	20 ↖	20 ↖	20 ↖	20 ↖	17 ↖	18 ↖	18 ↖	17 ↖	17 ↖	17 ↖	18 ↖	18 ↖	21 ↖	20 ↖	21 ↖	20 ↖	20 ↖	22 ↖
Houston Pilots D - 37/38	23 ↖	24 ↖	25 ↖	26 ↖	26 ↖	26 ↖	26 ↖	26 ↖	26 ↖	26 ↖	26 ↖	26 ↖	28 ↖	28 ↖	28 ↖	28 ↖	28 ↖	28 ↖	29 ↖	29 ↖	29 ↖	29 ↖	28 ↖	29 ↖
Houston Pilots C - 25/26	16 ↖	16 ↖	17 ↖	17 ↖	17 ↖	18 ↖	18 ↖	18 ↖	18 ↖	17 ↖	17 ↖	17 ↖	17 ↖	17 ↖	17 ↖	17 ↖	17 ↖	18 ↖	20 ↖	20 ↖	20 ↖	20 ↖	20 ↖	20 ↖
Houston Pilots B - 11/12	15 ↖	15 ↖	15 ↖	15 ↖	16 ↖	16 ↖	16 ↖	16 ↖	16 ↖	16 ↖	16 ↖	16 ↖	16 ↖	17 ↖	17 ↖	17 ↖	16 ↖	17 ↖	17 ↖	18 ↖	17 ↖	17 ↖	17 ↖	17 ↖
Houston Pilots A - 1 & 2 Bravo	17 ↖	17 ↖	18 ↖	20 ↖	20 ↖	20 ↖	20 ↖	20 ↖	20 ↖	20 ↖	18 ↖	20 ↖	20 ↖	20 ↖	18 ↖	20 ↖	18 ↖	18 ↖	20 ↖	20 ↖	20 ↖	20 ↖	20 ↖	21 ↖

**NOTE: This is automated data that may/may not agree with the official BAM thinking that's found on the daily slides. This data should be used as a guide only.**



# Houston Pilots: SUN. 11/3/2024



## Forecast Discussion

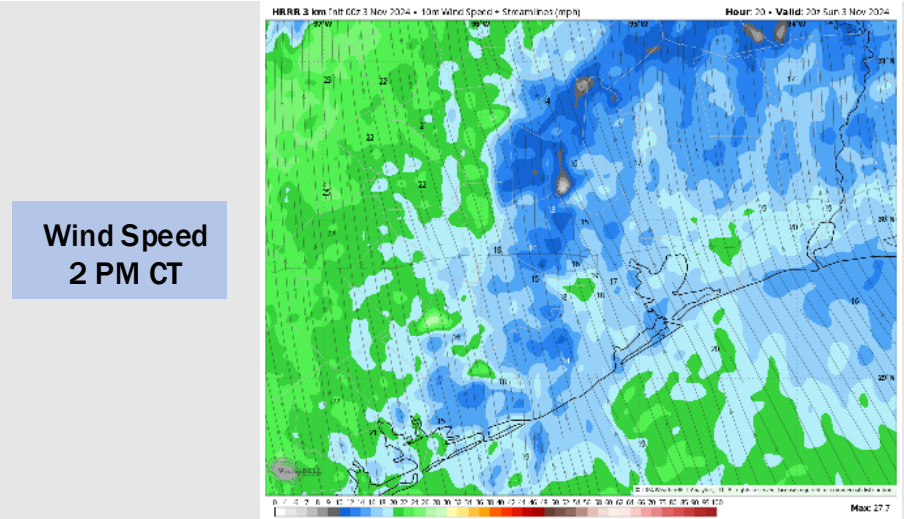
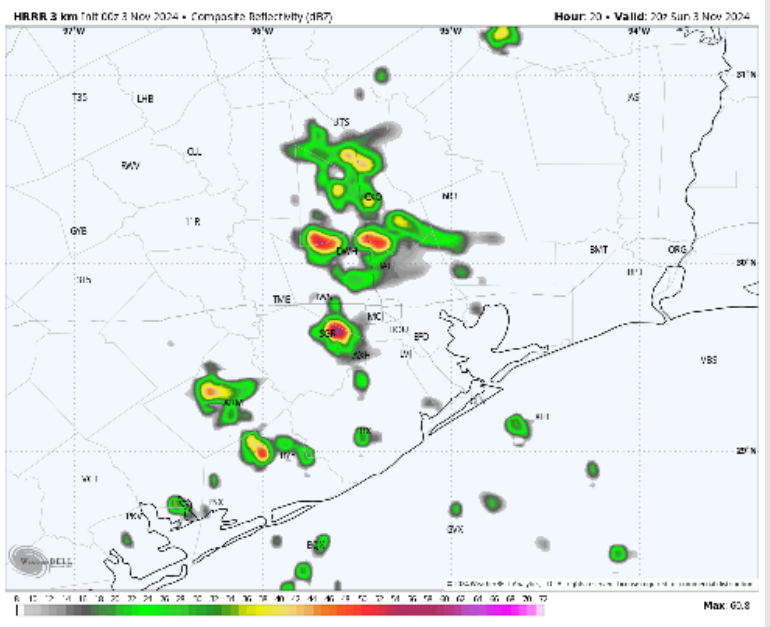
**Precip:** Isolated showers (20%) will work into the area by 4 AM today and continue throughout the morning. Coverage will increase after 12 PM to 30-40% with a few storms in play at all stations.

**Wind:** Winds will be out of the S/SSE throughout the day. **N of Morgan's Point:** Winds will be at 7 – 11 kts through 11AM before increasing to 11 – 16 kts for the rest of the day. **S of Morgan's Point:** Winds will be at 15 – 20 kts through 9 PM. After 9 PM winds increase to 18– 23 kts. **Wind gusts of 27 - 33 kts will be in play for all stations after 1 PM.**

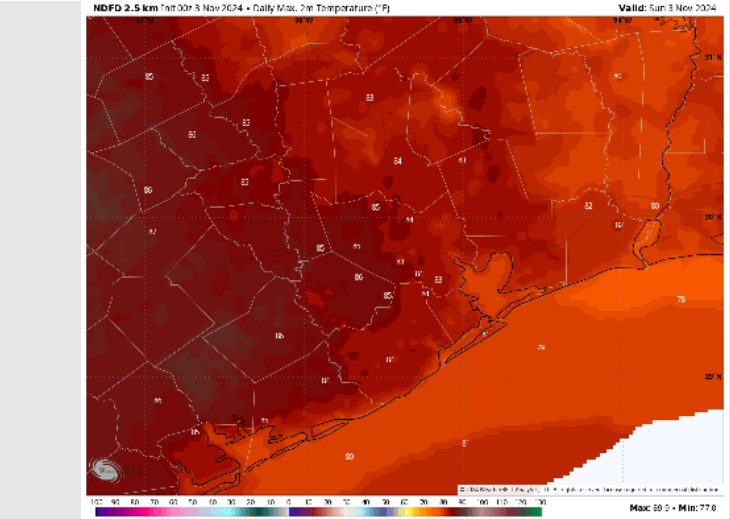
**High Temps:** **N of Morgan's Point:** Low/Mid 80s F. **S of Morgan's Point:** Upper 70s/Near 80 F.

**Visibility:** Visibilities may be reduced in heavy downpours. Otherwise, no fog concerns for any Stations.

## Precip Image: 2 PM CT



Wind Speed  
2 PM CT



High Temps  
Today

## Forecast Discussion

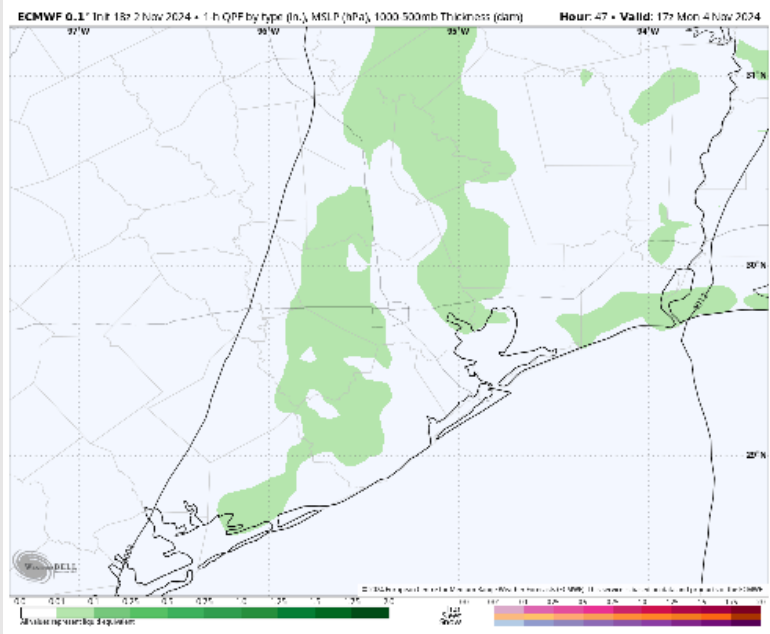
**Precip:** Scattered (40-50%) showers will be possible throughout the day on Monday.

**Wind:** Winds will be out of the SE throughout Monday. **N of Morgan's Point:** Winds will be at 15 – 20 kts throughout the day on Monday. **S of Morgan's Point:** Winds will be 20 – 25 kts for the entire day Monday. **Wind gusts of 25 – 30 kts will be possible for all stations Monday, with higher gusts of 32 – 37 kts from 12-7 PM.**

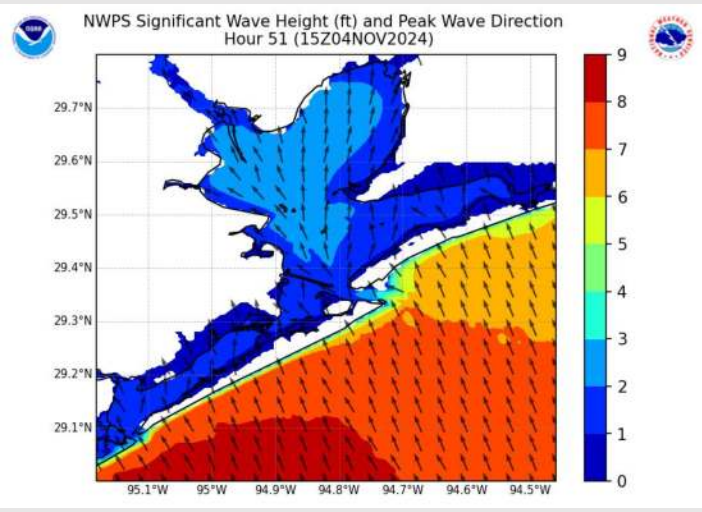
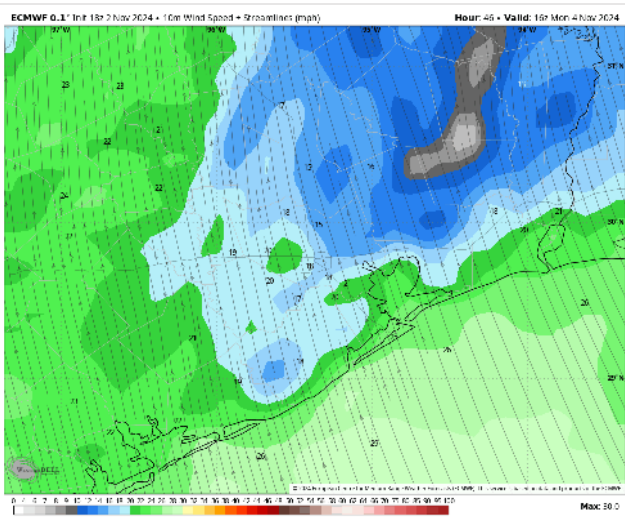
**High Temps:** **N of Morgan's Point:** Mid 80s F. **S of Morgan's Point:** Upper 70s/Near 80 F.

**Visibility:** Visibilities may be reduced in heavy downpours. Otherwise, no fog concerns for any Stations.

## Precip Image: 11 AM CT



Wind Speed:  
10 AM CT



Wave Heights  
9 AM CT

# Houston Pilots: TUE. 11/5/2024



## Forecast Discussion

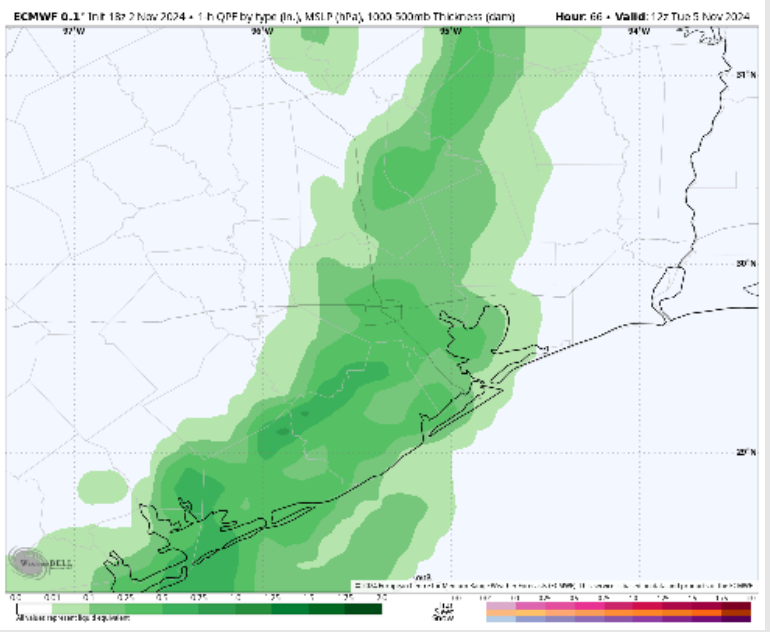
**Precip:** Widespread showers in play for all Stations between 3 AM – 4 PM. Dry conditions favored after 4 PM.

**Wind:** Winds will be out of the SE through 6 AM, becoming variable in direction for the rest of the day after that time. **N of Morgan's Point:** Winds will start the day at 15-20 kts but will decrease to 3-8 kts by 6 AM. **S of Morgan's Point:** Winds will begin the day at 20-25 kts but will decrease to 8-13 kts by 6 AM. Winds will then decrease further to 4-9 kts by 12 PM. **Wind gusts of 20-25 in play for all Stations through 6 AM.**

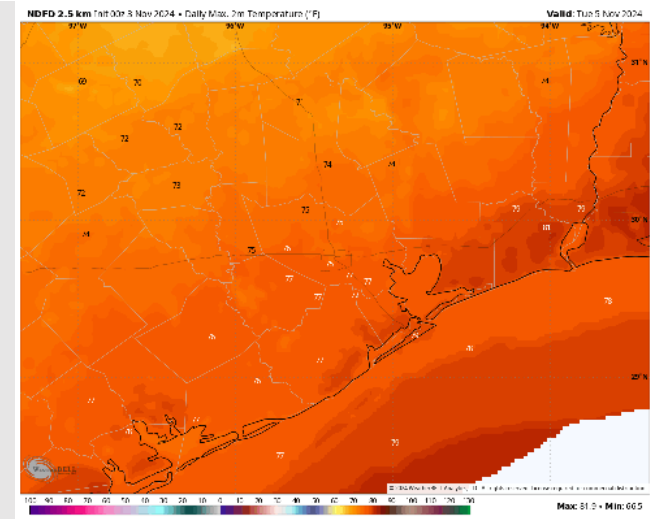
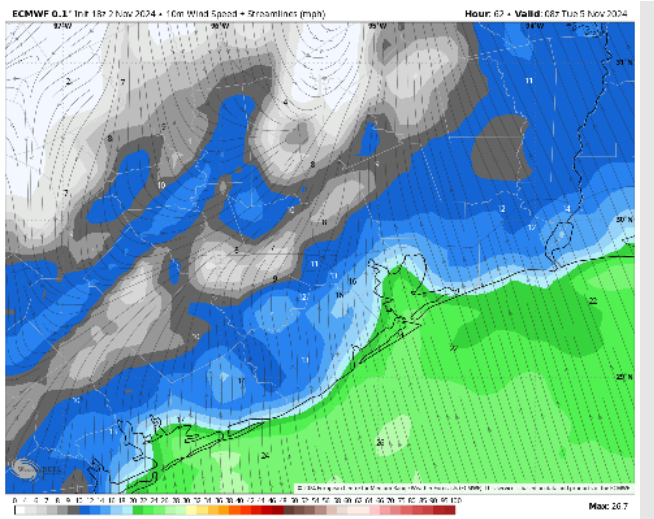
**High Temps:** **N of Morgan's Point:** Mid 70s F. **S of Morgan's Point:** Mid to Upper 70s F

**Visibility:** Visibilities may be reduced in heavy downpours. Otherwise, no fog concerns for any Stations.

## Precip Image: 6 AM CT

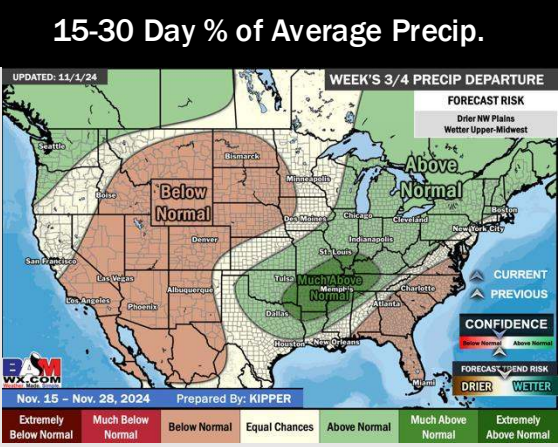
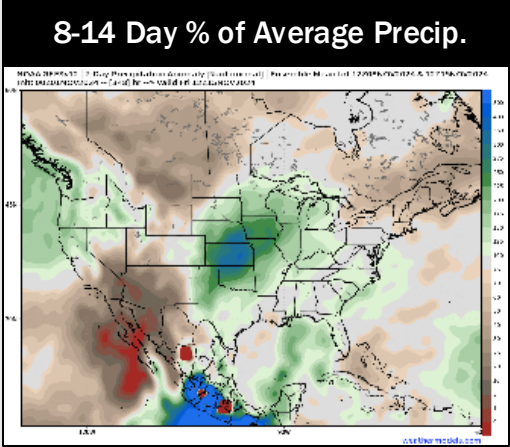
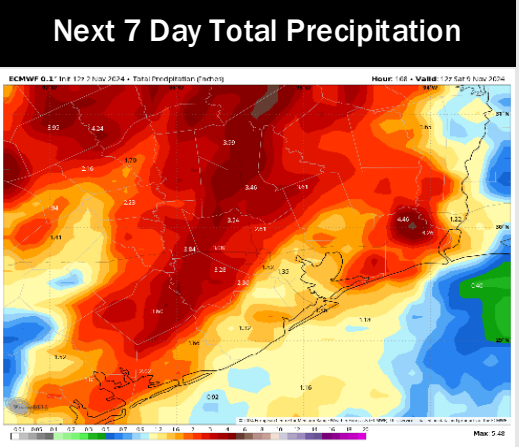
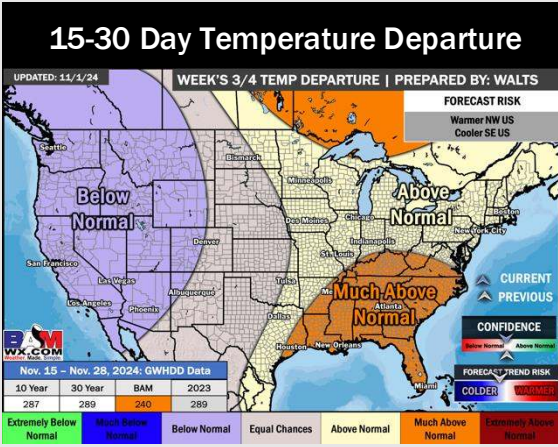
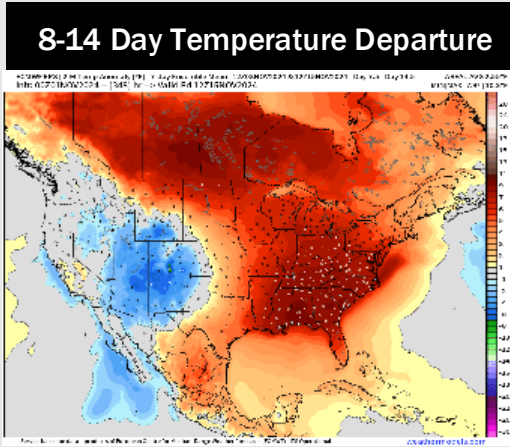
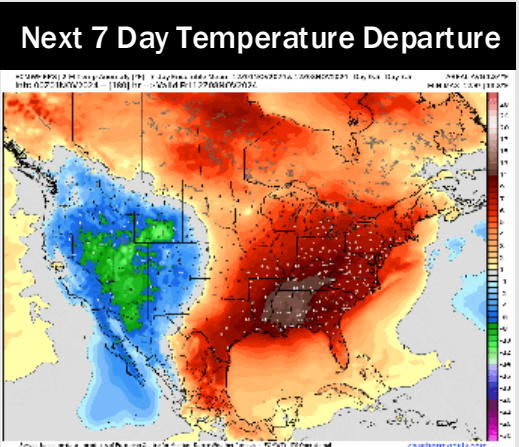


## Wind Speed: 2 AM CT



## High Temps Tuesday

# Houston Pilots: 11/3/24



- Temps are expected to be above normal for the week 1 timeframe. Favoring scattered rain chances to continue for the week 1 period.
- Above normal temperatures are favored for week 2. Favoring precipitation to be right around normal depending on the track of the upcoming tropical system.
- Above normal temperatures and near normal precipitation chances are expected for the weeks 3/4 timeframe.