

Houston Pilots Forecast Package



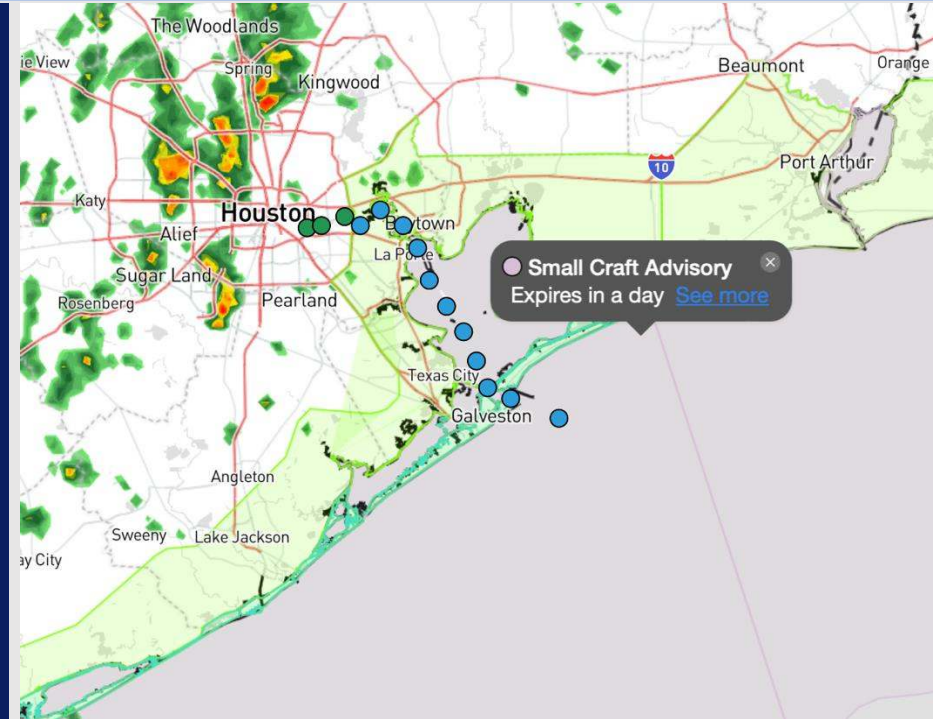
Updated: 12:15 PM CT

Sunday, November 17, 2024

Forecaster: Hope Kleitsch

Weather Headlines

- **Showers/Storm chances continue today and MON. Severe risks will possible.**
- **Non-thunderstorm wind gusts may reach 20 - 30kts at times today and MON, especially at the Boarding Station.**
- **Wave heights are favored to reach 6'+ by 12AM MON. Check wave height slide for more information.**
- **Zulu Trigger Video Update: [Video](#)**



Current Radar: 12:10 PM CT



As always, please do not hesitate to reach out to us with any forecast questions via the chat option on Clarity or our on-call number, **(317)-560-8122** press 1 for forecast questions.

Houston Pilots Port Trigger Update

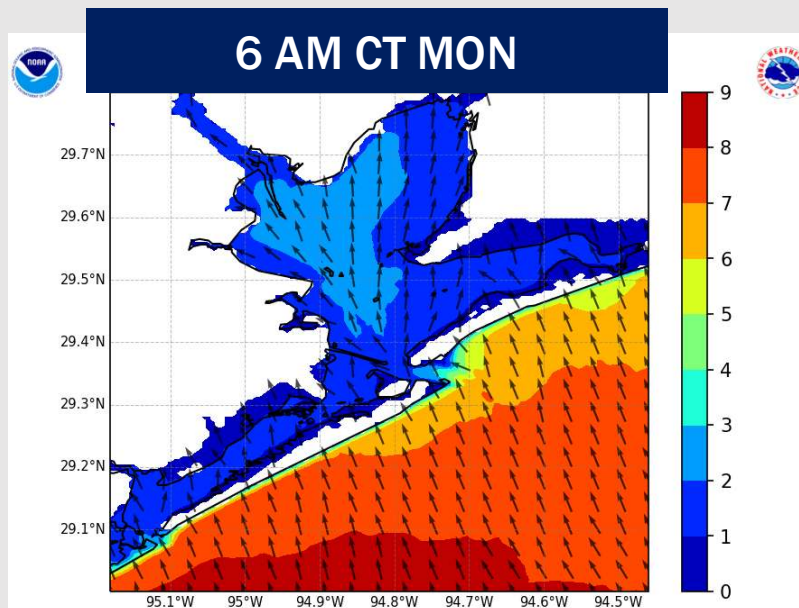
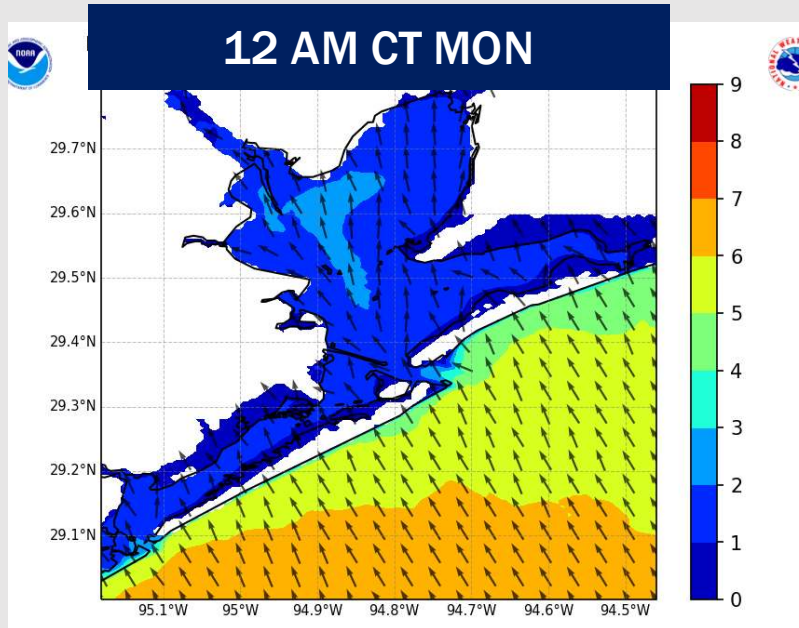


Port Condition	34 KTS+ Sustained Wind Trigger Reached at:	6 Foot Wave Trigger Reached at:	Time Remaining/Trigger Ends At:
Victor	---	---	---
Whiskey	---	---	---
X-Ray	---	---	---
Yankee	---	---	---
Zulu	---	CURRENT	MON 6 PM

Port Condition	Trigger Definition	Trigger Reached?
Victor	Hurricane entering/developing in Gulf of Mexico that's a threat to the area	NO
Whiskey	72 hours prior to predicted sustained winds of 34+ KTS	NO
X-Ray	48 hours prior to predicted sustained winds of 34+ KTS or 6' wave height	YES
Yankee	24 hours prior to predicted sustained winds of 34+ KTS or 6' wave height	NO
Zulu	12 hours prior to predicted sustained winds of 34+ KTS or 6' wave height	NO

NOTES: Wave heights are expected to peak MON AM with wave heights of 6'-8'. Wave heights are expected to drop below 6' by 6PM on Monday.

Wave Height Forecast Update



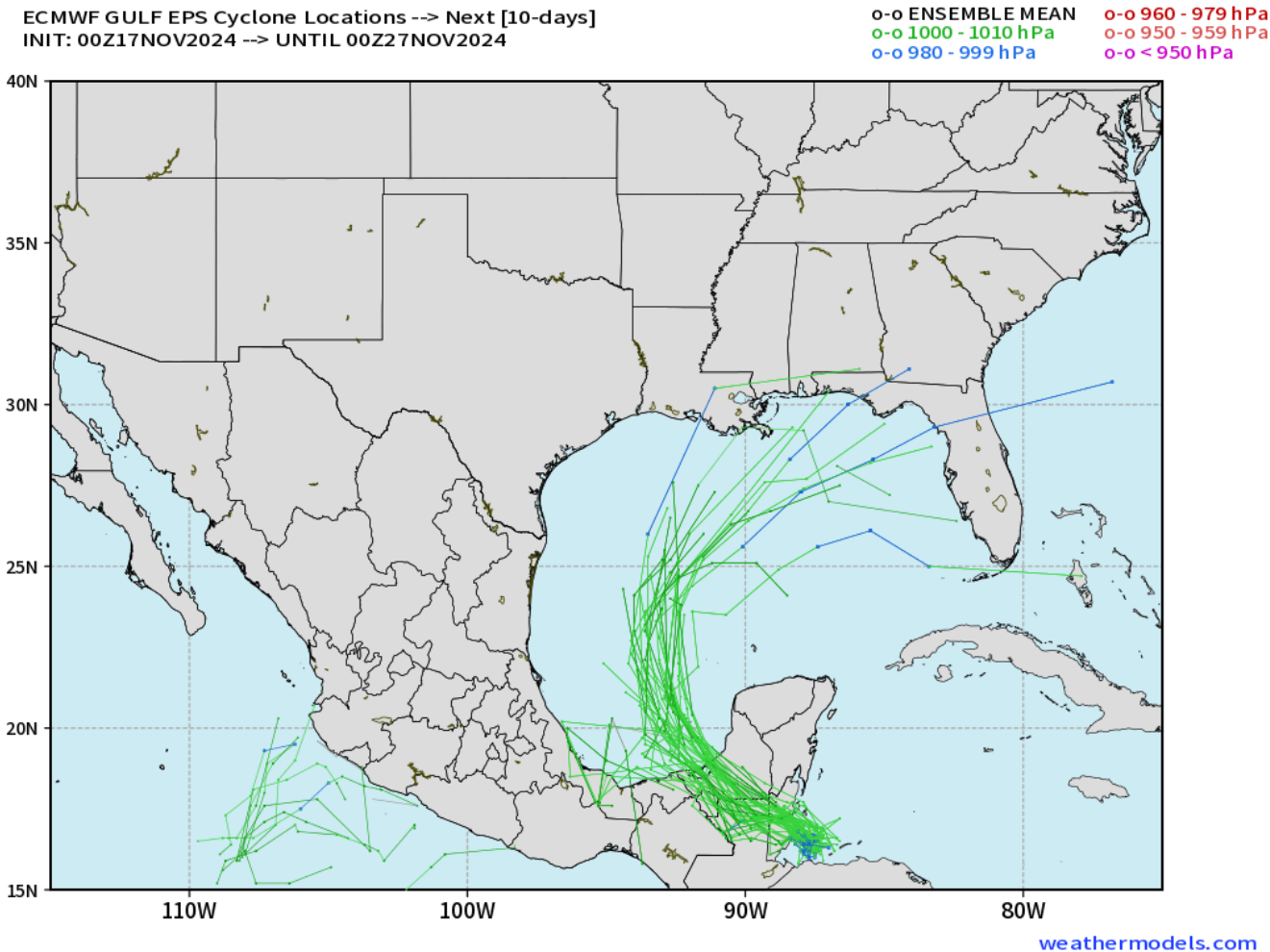
Wave heights will continue to increase through the day.

Wave heights will reach of 5' -6' by 12AM Monday, 6' - 7' 3AM.

Following 9AM MON wave heights are favored to decrease throughout the afternoon dipping below 6' by 9PM Monday

Houston Pilots Tropical Update

Tropical Storm Sara Potential Tracks



Tropical Storm Sara is favored to weaken and likely dissipate across the Yucatán Peninsula

Confidence remains high this storm will push northeast towards Florida and not impact Houston directly.

Houston Pilots Extended Range Visibility Report



Wednesday 11/19/24

Fog not favored for WED.

Forecast Confidence



Thursday 11/20/24

Fog not favored for THU.

Forecast Confidence



Friday 11/21/24

Fog not favored for FRI.

Forecast Confidence



Chance for Fog

Wednesday AM	Unlikely
Wednesday PM	Unlikely
Thursday AM	Unlikely
Thursday PM	Unlikely
Friday AM	Unlikely
Friday PM	Unlikely

Houston Pilots Visibility Chart (miles)



Forecast Confidence



Visibility	Sun 1 pm	Sun 2 pm	Sun 3 pm	Sun 4 pm	Sun 5 pm	Sun 6 pm	Sun 7 pm	Sun 8 pm	Sun 9 pm	Sun 10 pm	Sun 11 pm	Mon 12 am	Mon 1 am	Mon 2 am	Mon 3 am	Mon 4 am	Mon 5 am	Mon 6 am	Mon 7 am	Mon 8 am	Mon 9 am	Mon 10 am	Mon 11 am	Mon 12 pm
Houston Pilots N - 610 Bridge	10	10	10	10	10	10	10	10	10	10	10	10	10	10	10	10	10	10	10	9	9	10	10	9
Houston Pilots M - Kinder 1	10	10	10	10	10	10	10	10	10	10	10	10	10	10	10	10	10	10	10	9	9	10	10	9
Houston Pilots L - Greens Bayou	10	10	10	10	10	10	10	10	10	10	10	10	10	10	10	10	10	10	10	8	8	10	10	9
Houston Pilots K - Shell Crude	10	10	10	10	10	10	10	10	10	10	10	10	10	10	10	10	10	10	10	8	8	10	10	9
Houston Pilots J - Lynchburg Ferries	10	10	10	10	10	10	10	10	10	10	10	10	10	10	10	10	10	10	10	8	8	10	10	9
Houston Pilots I - Exxon 3	10	10	10	10	10	10	10	10	10	10	10	10	10	10	10	10	10	10	10	8	8	10	10	9
Houston Pilots H - Morgans Point	10	10	10	9	10	10	10	10	10	10	10	10	10	10	10	10	10	10	10	8	8	10	10	9
Houston Pilots G - 75/76	10	10	10	6.9	10	10	10	10	10	10	10	10	10	10	10	10	10	10	10	10	10	10	10	10
Houston Pilots F - 63/64	10	10	10	6.9	10	10	10	10	10	10	10	10	10	10	10	10	10	10	10	10	10	10	10	10
Houston Pilots E - 51/52	10	10	10	10	10	10	10	10	10	10	10	10	10	10	10	10	10	10	10	10	10	10	10	10
Houston Pilots D - 37/38	10	10	10	10	10	10	10	10	10	10	10	10	10	10	10	10	10	10	10	10	10	10	10	10
Houston Pilots C - 25/26	10	10	10	10	10	10	10	10	10	10	10	10	10	10	10	10	10	10	10	10	10	10	10	10
Houston Pilots B - 11/12	10	10	10	10	10	10	10	10	10	10	10	10	10	10	10	10	10	10	10	9	9	10	10	10
Houston Pilots A - 1 & 2 Bravo	10	10	10	10	10	10	10	10	10	10	10	10	9	9	9	9	10	10	10	9	8	9	10	10

NOTE: This is automated data that may/may not agree with the official BAM thinking that's found on the daily slides or special visibility report slides. This data should be used as a guide only

Houston Pilots Wind Chart



Forecast Confidence



Sustained wind 10 Knots
 Gusts 15 Knots
 Wind from the SE

Example

10
 15
 ↙

Wind	Sun 1 pm	Sun 2 pm	Sun 3 pm	Sun 4 pm	Sun 5 pm	Sun 6 pm	Sun 7 pm	Sun 8 pm	Sun 9 pm	Sun 10 pm	Sun 11 pm	Mon 12 am	Mon 1 am	Mon 2 am	Mon 3 am	Mon 4 am	Mon 5 am	Mon 6 am	Mon 7 am	Mon 8 am	Mon 9 am	Mon 10 am	Mon 11 am	Mon 12 pm	
Houston Pilots N - 610 Bridge	13 24 ↕	13 25 ↕	13 26 ↕	14 26 ↕	13 25 ↕	13 24 ↕	13 25 ↕	15 26 ↕	15 28 ↕	16 29 ↕	15 28 ↕	15 28 ↕	15 28 ↕	15 28 ↕	15 28 ↕	15 28 ↕	15 28 ↕	15 26 ↕	15 29 ↕	15 29 ↕	15 29 ↕	16 32 ↕	16 33 ↕	15 31 ↕	
Houston Pilots M - Kinder 1	13 24 ↕	13 25 ↕	13 26 ↕	13 26 ↕	13 25 ↕	13 24 ↕	13 25 ↕	15 26 ↕	15 28 ↕	16 29 ↕	15 29 ↕	15 28 ↕	15 29 ↕	15 28 ↕	15 29 ↕	15 29 ↕	15 28 ↕	15 26 ↕	16 29 ↕	15 29 ↕	15 29 ↕	15 31 ↕	16 33 ↕	17 31 ↕	
Houston Pilots L - Greens Bayou	13 25 ↕	13 26 ↕	13 26 ↕	14 26 ↕	14 25 ↕	13 23 ↕	14 25 ↕	15 26 ↕	15 28 ↕	16 29 ↕	15 29 ↕	15 29 ↕	15 29 ↕	15 29 ↕	15 29 ↕	15 29 ↕	15 29 ↕	15 29 ↕	15 30 ↕	15 29 ↕	15 31 ↕	15 29 ↕	17 31 ↕	17 32 ↕	16 31 ↕
Houston Pilots K - Shell Crude	13 25 ↕	13 26 ↕	14 26 ↕	14 26 ↕	13 25 ↕	13 23 ↕	14 25 ↕	15 26 ↕	15 28 ↕	16 29 ↕	15 29 ↕	15 30 ↕	15 30 ↕	15 29 ↕	15 30 ↕	15 30 ↕	15 29 ↕	15 29 ↕	15 31 ↕	16 30 ↕	15 29 ↕	17 31 ↕	17 32 ↕	16 31 ↕	
Houston Pilots J - Lynchburg Ferries	14 25 ↕	15 26 ↕	14 26 ↕	14 26 ↕	14 25 ↕	13 24 ↕	14 25 ↕	15 28 ↕	15 29 ↕	15 30 ↕	15 30 ↕	15 30 ↕	15 30 ↕	15 30 ↕	15 30 ↕	15 30 ↕	15 30 ↕	15 30 ↕	16 31 ↕	16 30 ↕	16 31 ↕	16 29 ↕	17 31 ↕	18 32 ↕	17 31 ↕
Houston Pilots I - Exxon 3	15 24 ↕	15 25 ↕	16 25 ↕	17 26 ↕	17 26 ↕	17 25 ↕	18 26 ↕	20 28 ↕	21 29 ↕	22 30 ↕	23 30 ↕	22 30 ↕	23 31 ↕	23 31 ↕	23 31 ↕	23 31 ↕	23 31 ↕	22 31 ↕	22 31 ↕	22 30 ↕	21 29 ↕	20 29 ↕	21 31 ↕	20 29 ↕	18 29 ↕
Houston Pilots H - Morgans Point	15 24 ↕	16 24 ↕	16 25 ↕	17 26 ↕	17 26 ↕	17 24 ↕	18 26 ↕	20 28 ↕	21 29 ↕	22 30 ↕	22 31 ↕	22 30 ↕	23 31 ↕	23 31 ↕	22 31 ↕	23 31 ↕	22 31 ↕	22 31 ↕	22 31 ↕	21 30 ↕	20 29 ↕	20 31 ↕	20 31 ↕	19 29 ↕	17 29 ↕
Houston Pilots G - 75/76	16 25 ↕	16 26 ↕	17 26 ↕	18 26 ↕	18 26 ↕	18 26 ↕	20 26 ↕	22 30 ↕	22 31 ↕	23 33 ↕	24 33 ↕	24 33 ↕	24 35 ↕	25 36 ↕	24 35 ↕	25 36 ↕	25 36 ↕	24 35 ↕	24 35 ↕	24 35 ↕	23 33 ↕	22 31 ↕	22 32 ↕	21 33 ↕	20 31 ↕
Houston Pilots F - 63/64	15 25 ↕	17 26 ↕	17 26 ↕	18 28 ↕	18 28 ↕	17 25 ↕	20 26 ↕	21 30 ↕	22 31 ↕	23 32 ↕	24 33 ↕	24 33 ↕	25 35 ↕	25 36 ↕	25 35 ↕	26 36 ↕	26 36 ↕	24 35 ↕	24 35 ↕	24 35 ↕	23 33 ↕	22 31 ↕	22 32 ↕	20 32 ↕	18 30 ↕
Houston Pilots E - 51/52	16 25 ↕	17 26 ↕	17 26 ↕	18 26 ↕	18 26 ↕	18 26 ↕	20 26 ↕	21 29 ↕	22 30 ↕	23 32 ↕	24 32 ↕	24 32 ↕	24 35 ↕	25 36 ↕	24 35 ↕	25 36 ↕	25 36 ↕	24 35 ↕	24 35 ↕	24 35 ↕	23 33 ↕	22 32 ↕	21 32 ↕	20 33 ↕	20 30 ↕
Houston Pilots D - 37/38	16 25 ↕	17 25 ↕	17 26 ↕	18 26 ↕	18 26 ↕	18 26 ↕	20 26 ↕	21 29 ↕	22 30 ↕	23 32 ↕	24 32 ↕	24 32 ↕	24 35 ↕	24 36 ↕	24 35 ↕	24 36 ↕	24 36 ↕	24 35 ↕	24 35 ↕	24 35 ↕	23 33 ↕	22 32 ↕	22 32 ↕	20 32 ↕	20 30 ↕
Houston Pilots C - 25/26	16 25 ↕	17 25 ↕	17 26 ↕	17 26 ↕	17 26 ↕	17 26 ↕	18 28 ↕	20 30 ↕	20 30 ↕	22 32 ↕	22 32 ↕	22 33 ↕	24 35 ↕	24 36 ↕	24 36 ↕	24 36 ↕	24 36 ↕	24 35 ↕	24 35 ↕	24 35 ↕	23 33 ↕	22 32 ↕	21 32 ↕	20 32 ↕	18 29 ↕
Houston Pilots B - 11/12	15 24 ↕	16 24 ↕	16 25 ↕	16 25 ↕	16 25 ↕	16 25 ↕	17 26 ↕	18 29 ↕	18 30 ↕	20 31 ↕	21 32 ↕	21 32 ↕	22 33 ↕	22 35 ↕	22 35 ↕	22 36 ↕	22 36 ↕	22 33 ↕	22 35 ↕	22 35 ↕	22 35 ↕	20 31 ↕	20 31 ↕	20 30 ↕	17 29 ↕
Houston Pilots A - 1 & 2 Bravo	16 25 ↕	17 26 ↕	17 26 ↕	18 28 ↕	20 29 ↕	20 28 ↕	20 29 ↕	22 31 ↕	22 31 ↕	23 33 ↕	24 35 ↕	24 35 ↕	25 37 ↕	26 37 ↕	25 37 ↕	26 38 ↕	26 38 ↕	25 37 ↕	25 37 ↕	25 36 ↕	24 33 ↕	23 33 ↕	22 33 ↕	21 32 ↕	20 29 ↕

NOTE: This is automated data that may/may not agree with the official BAM thinking that's found on the daily slides. This data should be used as a guide only.

Houston Pilots: SUN. 11/17/2024



Forecast Discussion

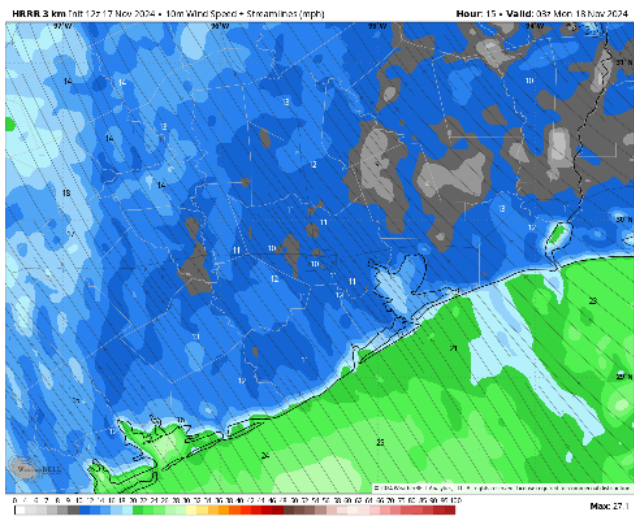
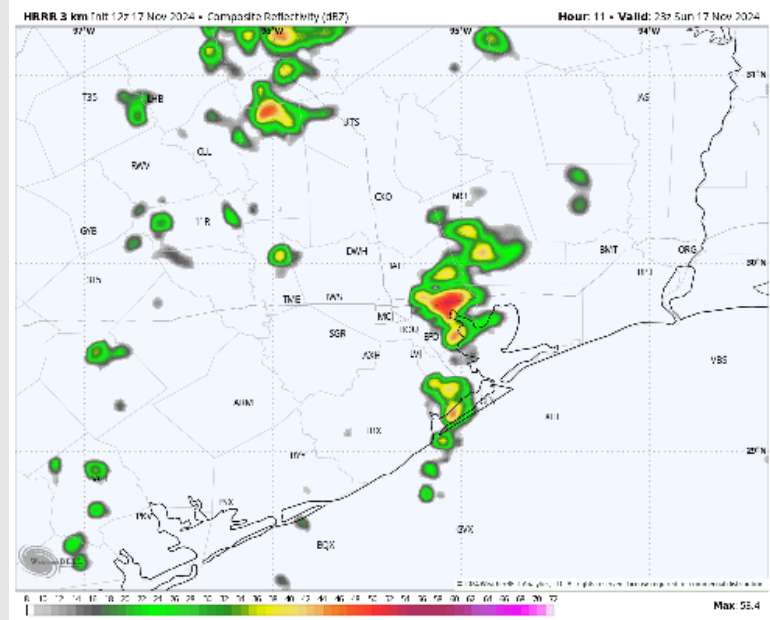
Precip: Scattered showers/storms will continue through 5 PM, becoming more isolated after then and will continue through the night. Risks will be for wind gusts of 30-40 kts and small hail with localized stronger storms.

Wind: Winds will be out of the SE throughout the day. **N of Morgan's Point:** Winds will be at 8 – 13 kts through the rest of the day. **S of Morgan's Point:** Winds at 15 – 20 kts throughout the rest of the day. **Non-thunderstorm wind gusts of 20 – 30 kts possible for all Stations.**

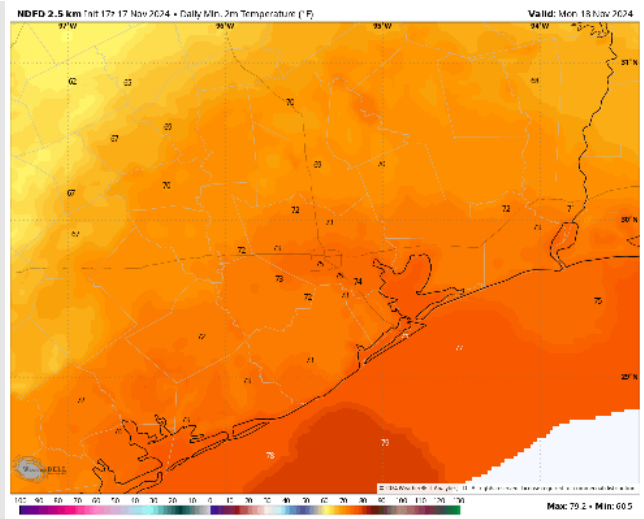
Low Temps: **N of Morgan's Point:** Mid 70s F. **S of Morgan's Point:** Upper 70s F.

Visibility: No fog concerns for today. Heavy showers/storms can reduce visibilities briefly.

Precip Image: 5 M CT



Wind Speed:
9 PM CT



Low Temps
MON AM

Houston Pilots: MON. 11/18/2024



Forecast Discussion

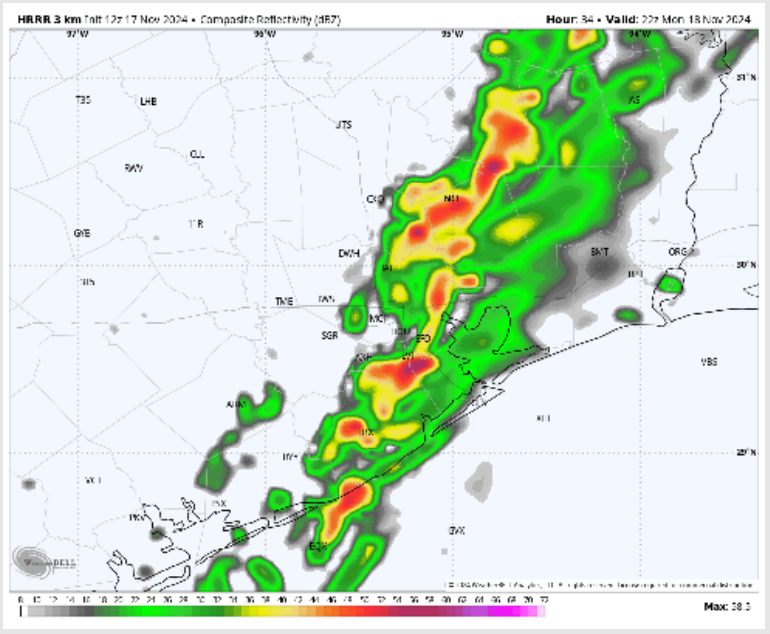
Precip: Isolated showers are favored through 2 PM before a line of showers/storms will enter after that. **Severe storms will be possible within this line with threats of hail and wind gusts of 35-50 kts. An isolated tornado cannot be ruled out.**

Wind: Winds will be out of the S/SE through 6 PM, shifting out of the W/NW after then. **N of Morgan's Point:** Winds will be at 11 - 16 kts through 6 PM before decreasing to 3 - 8 kts for the rest of the day Monday. **S of Morgan's Point:** Winds will be at 20 - 25 kts through 7 PM Monday before decreasing to 8 - 13 kts for the evening. **Non-thunderstorm wind gusts of 25-30 kts will be possible for stations S of Morgan's point.**

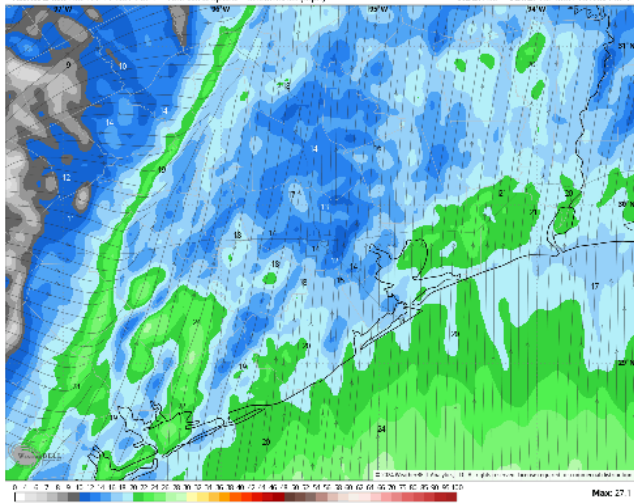
High Temps: **N of Morgan's Point:** Low 80s F. **S of Morgan's Point:** Upper 70s F to low 80s F.

Visibility: No visibility concerns for Monday. Heavy showers/storms can reduce visibilities briefly.

Precip Image: 4 PM CT

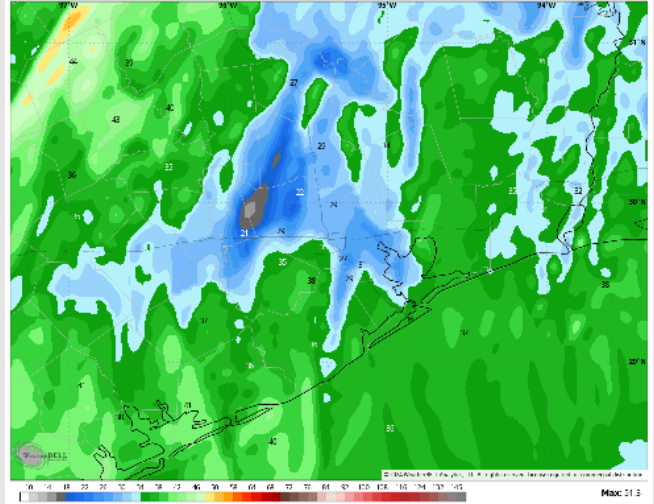


HRRR 3 km Fall 17 Nov 2024 • 13m Wind Speed - Streamlines (mph) Hour: 33 • Valid: 18 Nov 2024



Wind Speed
12 PM CT

HRRR 3 km Fall 17 Nov 2024 • 13m Wind Gust (mph) Hour: 27 • Valid: 18 Nov 2024



Max Wind
Gusts Monday

Forecast Discussion

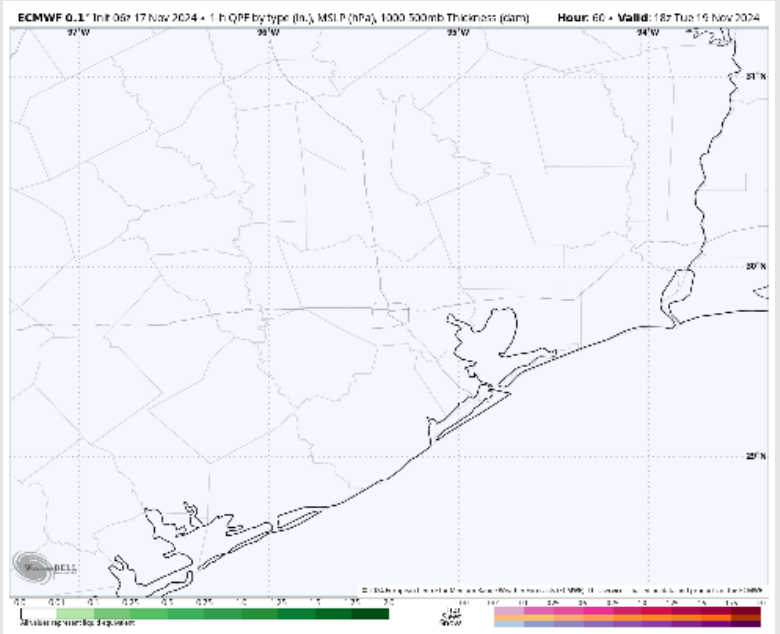
Precip: Favoring dry conditions through Tuesday.

Wind: Winds will be out of the NW throughout the day Tuesday. **N of Morgan's Point:** Winds will be at 2 - 7 kts throughout the day. **S of Morgan's Point:** Winds will be at 3 - 9 kts through Tuesday.

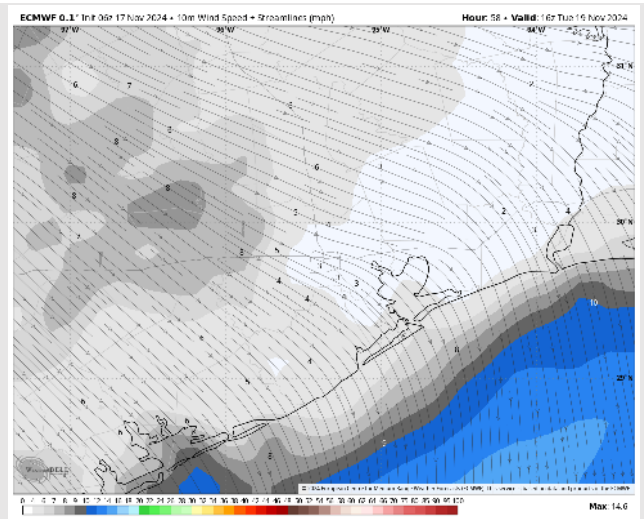
High Temps: **N of Morgan's Point:** Near 80 F. **S of Morgan's Point:** Mid to Upper 70s F.

Visibility: No visibility concerns for Tuesday.

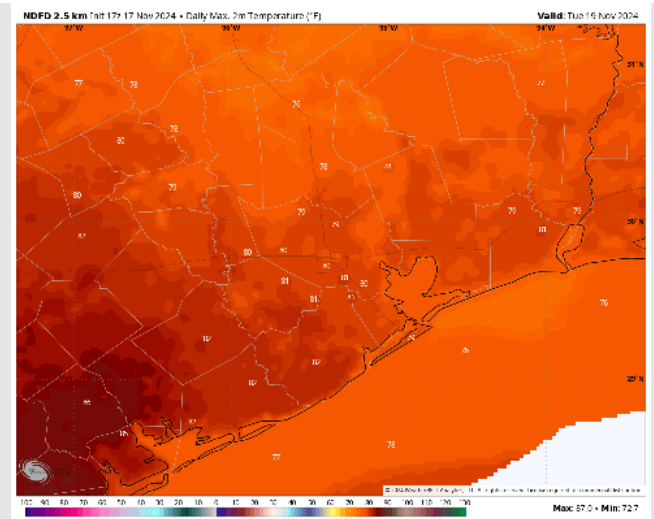
Precip Image: 12 PM CT



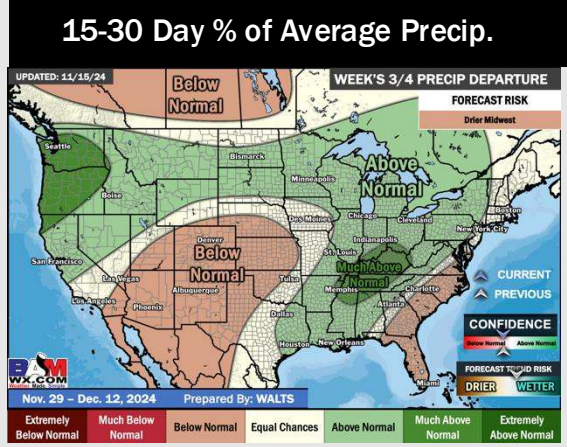
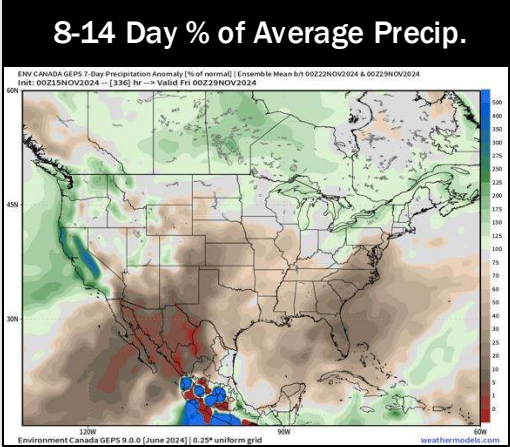
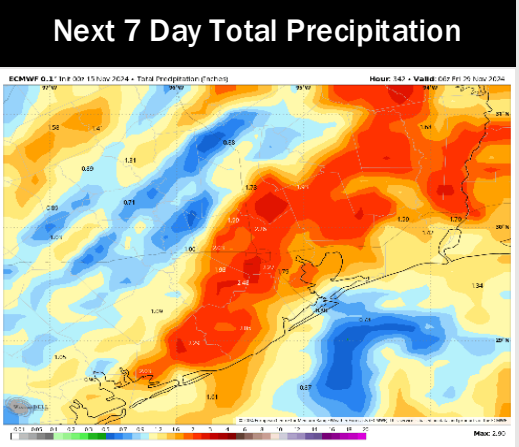
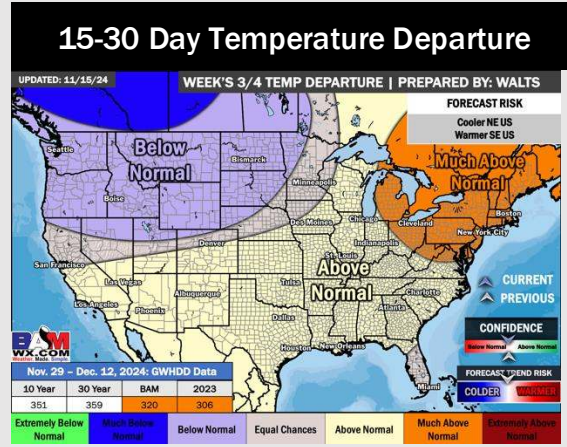
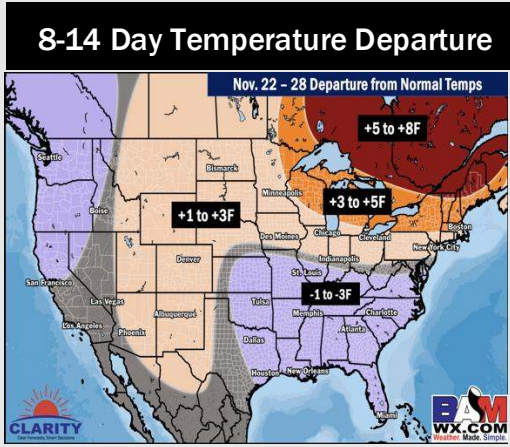
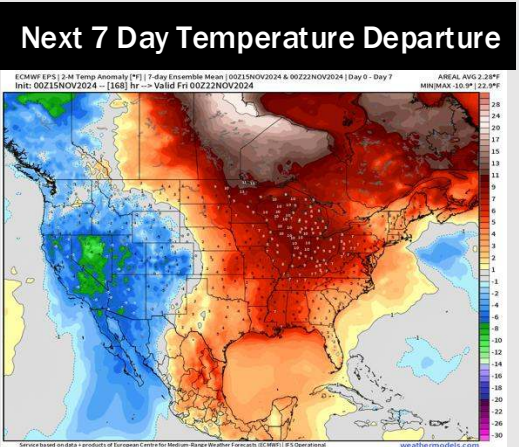
Wind Speed:
10 AM CT



High Temps
Tuesday



Houston Pilots: 11/17/24



- Temps are expected to be above normal for the week 1 timeframe. Favoring scattered rain and storm chances for the beginning of the week 1 timeframe.
- Below normal temperatures are favored for week 2. Favoring precipitation to be below normal.
- Above normal temperatures and above normal precipitation chances are expected for the weeks 3/4 timeframe.