

Houston Pilots Forecast Package



Updated: 12:50 PM CT

Saturday, November 2, 2024

Forecaster: Jonathan Kipper

Weather Headlines

- **Gusty winds of 25+ kts will be in play through early next week.**
- **Wave heights will begin to increase SUN PM and into MON. Monitoring potential for 6'+ wave heights on MON. X-Ray trigger currently in effect.**
- **Monitoring potential for tropical development and low-end impact chances over the next 7-10 Days**
- **Latest Video: [X-Ray Port Condition Update](#)**



Current Radar: 12:40 PM CT



As always, please do not hesitate to reach out to us with any forecast questions via the chat option on Clarity or our on-call number, **(317)-560-8122** press 1 for forecast questions.

Houston Pilots Port Trigger Update

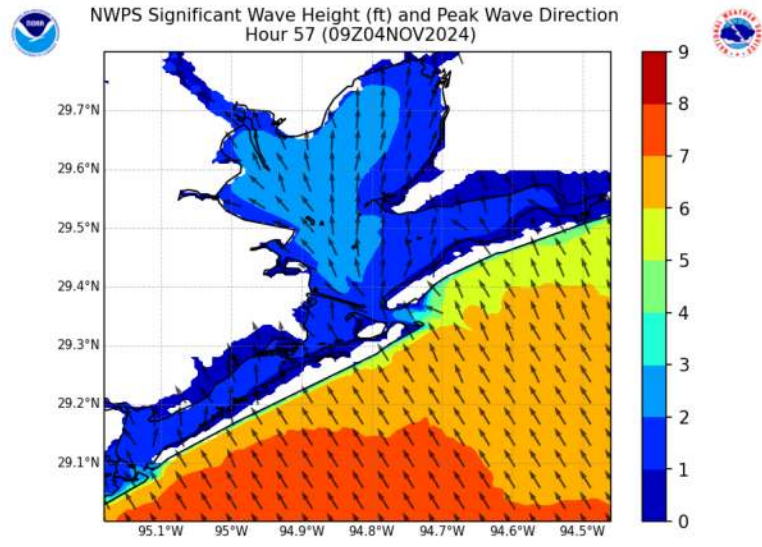


Port Condition	34 KTS+ Sustained Wind Trigger Reached at:	6 Foot Wave Trigger Reached at:	Time Remaining/Trigger Ends At:
Victor	---	---	---
Whiskey	---	---	---
X-Ray	---	Current	12 AM SUN
Yankee	---	12 AM SUN	12 PM SUN
Zulu	---	12 PM SUN	6 AM TUE

Port Condition	Trigger Definition	Trigger Reached?
Victor	Hurricane entering/developing in Gulf of Mexico that's a threat to the area	NO
Whiskey	72 hours prior to predicted sustained winds of 34+ KTS	NO
X-Ray	48 hours prior to predicted sustained winds of 34+ KTS or 6' wave height	YES
Yankee	24 hours prior to predicted sustained winds of 34+ KTS or 6' wave height	NO
Zulu	12 hours prior to predicted sustained winds of 34+ KTS or 6' wave height	NO

NOTES: Strong winds will allow for wave heights to increase throughout the weekend (SUN into MON). Wave heights are expected to reach/exceed 6' early MON AM and will linger through TUE AM.

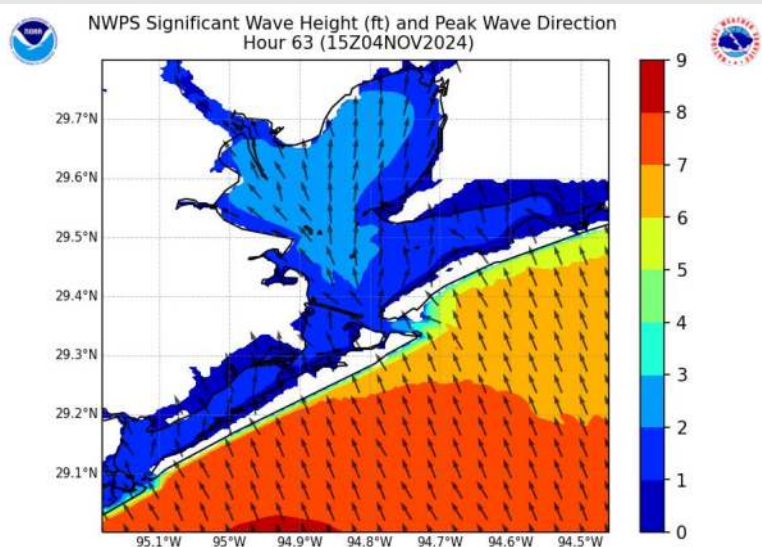
Wave Height Forecast Update



3 AM CT MON

Strong southerly winds SUN PM and into MON AM will bring elevated wave heights near of 5' – 7' by 12 AM MON.

Wave heights after 12AM MON are favored to continue to increase with peak wave heights approaching 6' – 8' by 9AM MON morning. After 9AM MON wave heights will slowly decrease, dipping below 6' by 6AM TUE.



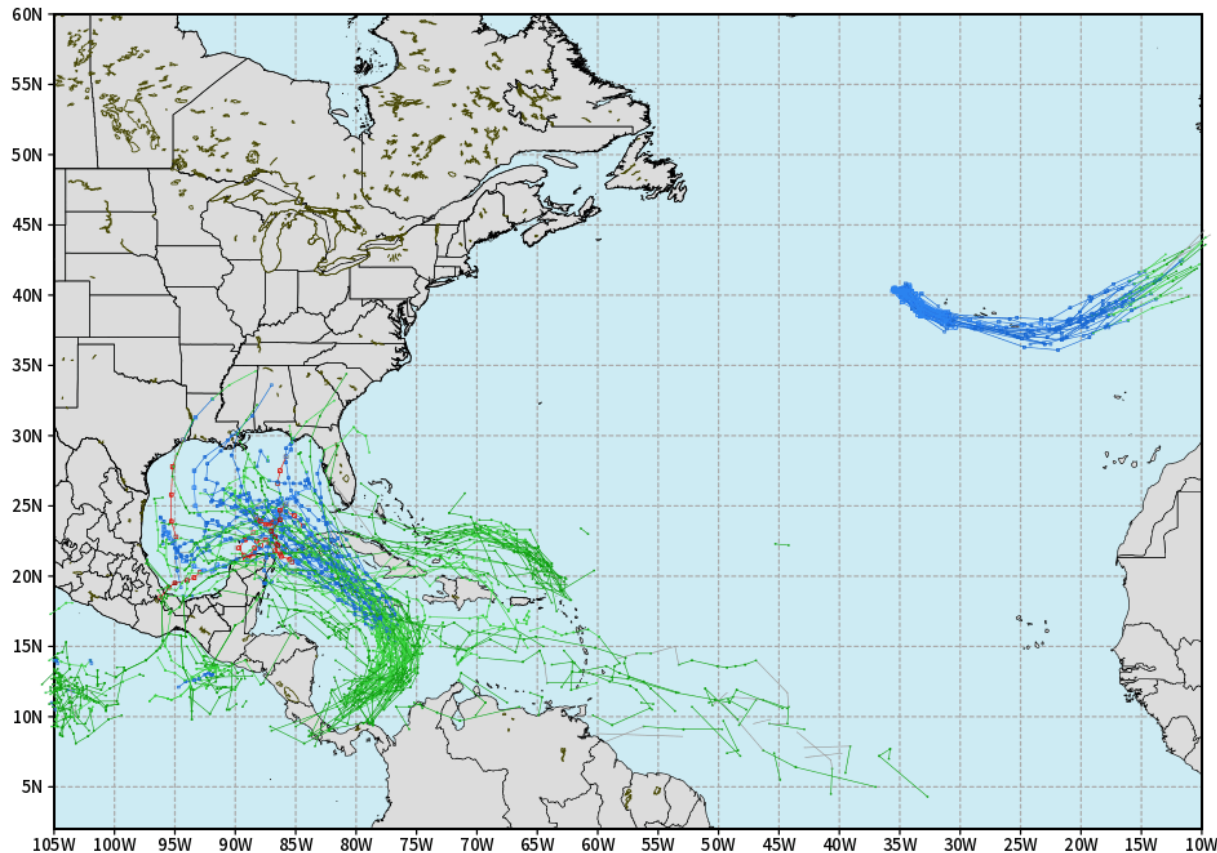
9 AM CT MON

Houston Pilots Tropical Update

European Tropical Tracks - Next 10 Days

ECMWF ATLANTIC EPS Cyclone Locations --> Next [10-days]
INIT: 00Z02NOV2024 --> UNTIL 00Z12NOV2024

o-o ENSEMBLE MEAN
o-o 1000 - 1010 hPa
o-o 980 - 999 hPa
o-o 960 - 979 hPa
o-o 950 - 959 hPa
o-o < 950 hPa



weathermodels.com

We are monitoring increasing potential for tropical formation in the Western Caribbean near the end of this weekend and into early next week.

Confidence remains low in exact track, however potential into the C/W Gulf of Mexico will need to be monitor over the next 7 days.

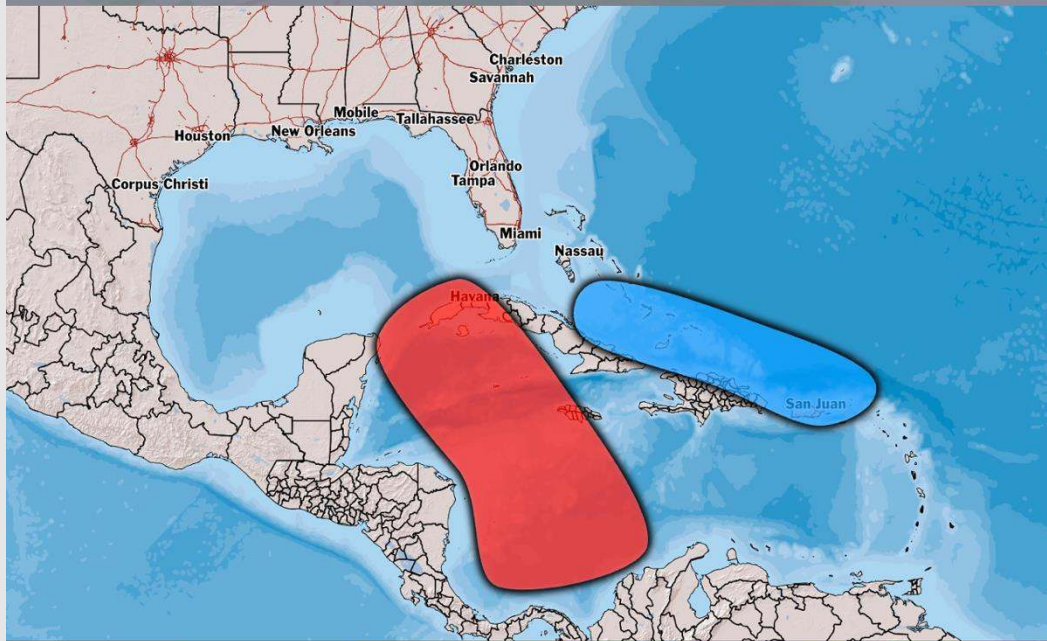
Direct impacts for HOU area over the next 7-10 days cannot be 100% ruled out.

Houston Pilots Tropical Update



 **Potential Tropical Development**

TROPICAL INSIGHT 8:00 PM CT Friday, November 1st, 2024 **Forecaster: Lowry**



Formation Chances	0 - 20%	20%-40%	40%-60%	60%-80%	80% - 100%
-------------------	---------	---------	---------	---------	------------

TIMING: SUN 11/3 – Wed 11/6

FORECAST NOTES:

- ✓ Data shows support of gradual tropical development into this weekend / early next week.
- ✓ Exact details on potential track remain uncertain currently, however a NW/N track into the Gulf of Mexico is favored progression currently.
- ✓ Area in red is of greatest risk. Area in blue at a low-end risk



Houston Pilots Extended Range Visibility Report



Tuesday 11/5/24

Fog not favored for TUE.

Forecast Confidence



Thursday 11/7/24

Fog not favored for THU.

Forecast Confidence



Wednesday 11/6/24

Fog not favored for WED.

Forecast Confidence



Chance for Fog

Tuesday AM	Unlikely
Tuesday PM	Unlikely
Wednesday AM	Unlikely
Wednesday PM	Unlikely
Thursday AM	Unlikely
Thursday PM	Unlikely

Houston Pilots Visibility Chart (miles)



Forecast Confidence



Visibility	Sat 2 pm	Sat 3 pm	Sat 4 pm	Sat 5 pm	Sat 6 pm	Sat 7 pm	Sat 8 pm	Sat 9 pm	Sat 10 pm	Sat 11 pm	Sun 12 am	Sun 1 am	Sun 1 am	Sun 2 am	Sun 3 am	Sun 4 am	Sun 5 am	Sun 6 am	Sun 7 am	Sun 8 am	Sun 9 am	Sun 10 am	Sun 11 am	Sun 12 pm
Houston Pilots N - 610 Bridge	10	10	10	10	10	10	10	10	10	10	10	10	10	10	10	10	10	10	10	9	9	10	10	10
Houston Pilots M - Kinder 1	10	10	10	10	10	10	10	10	10	10	10	10	10	10	10	10	10	10	10	9	9	10	10	10
Houston Pilots L - Greens Bayou	10	10	10	10	10	10	10	10	10	10	10	10	10	10	10	10	10	10	10	9	9	10	10	10
Houston Pilots K - Shell Crude	10	10	10	10	10	10	10	10	10	10	10	10	10	10	10	10	10	10	10	9	9	9	10	10
Houston Pilots J - Lynchburg Ferries	10	10	10	10	10	10	10	10	10	10	10	10	10	10	10	10	10	10	10	9	9	10	10	10
Houston Pilots I - Exxon 3	10	10	10	10	10	10	10	10	10	10	10	10	10	10	10	10	10	10	10	9	9	9	10	10
Houston Pilots H - Morgans Point	10	10	10	10	10	10	10	10	10	10	10	10	10	10	10	10	10	10	10	9	9	9	10	10
Houston Pilots G - 75/76	10	10	10	10	10	10	10	10	10	10	10	10	10	10	10	10	10	10	10	10	9	9	9	9
Houston Pilots F - 63/64	10	10	10	10	10	10	10	10	10	10	10	10	10	10	10	10	10	10	10	10	10	9	9	9
Houston Pilots E - 51/52	10	10	10	10	10	10	10	10	10	10	10	10	10	10	10	10	10	10	10	10	10	9	9	9
Houston Pilots D - 37/38	10	10	10	10	10	10	10	10	10	10	10	10	10	10	10	10	10	10	10	10	10	9	9	9
Houston Pilots C - 25/26	10	10	10	10	10	10	10	10	10	10	10	10	10	10	10	10	10	10	10	10	10	9	9	9
Houston Pilots B - 11/12	10	10	10	10	10	10	10	10	10	10	10	10	10	10	10	10	10	10	10	10	10	9	9	9
Houston Pilots A - 1 & 2 Bravo	10	10	10	10	10	10	10	10	10	10	10	10	10	10	10	10	10	10	10	10	10	9	9	9

NOTE: This is automated data that may/may not agree with the official B.A.M. thinking that's found on the daily slides or special visibility report slides. This data should be used as a guide only

Houston Pilots Wind Chart



Forecast Confidence



Sustained wind 10 Knots
 Gusts 15 Knots
 Wind from the SE

Example

10
 15
 ↙

Wind	Sat 2 pm	Sat 3 pm	Sat 4 pm	Sat 5 pm	Sat 6 pm	Sat 7 pm	Sat 8 pm	Sat 9 pm	Sat 10 pm	Sat 11 pm	Sun 12 am	Sun 1 am	Sun 1 am	Sun 2 am	Sun 3 am	Sun 4 am	Sun 5 am	Sun 6 am	Sun 7 am	Sun 8 am	Sun 9 am	Sun 10 am	Sun 11 am	Sun 12 pm
Houston Pilots N - 610 Bridge	10 22 ↙	12 23 ↙	12 23 ↙	12 23 ↙	12 24 ↙	12 22 ↙	10 20 ↙	10 21 ↙	10 20 ↙	10 21 ↙	12 22 ↙	12 21 ↙	12 21 ↙	12 21 ↙	10 21 ↙	10 21 ↙	10 20 ↙	10 20 ↙	10 18 ↙	12 22 ↙	13 22 ↙	13 23 ↙	14 26 ↙	15 28 ↙
Houston Pilots M - Kinder 1	12 22 ↙	12 23 ↙	12 23 ↙	12 24 ↙	12 23 ↙	12 22 ↙	10 20 ↙	10 21 ↙	10 21 ↙	10 21 ↙	12 22 ↙	12 22 ↙	12 22 ↙	12 22 ↙	10 21 ↙	10 21 ↙	10 21 ↙	10 20 ↙	10 20 ↙	12 22 ↙	13 22 ↙	13 23 ↙	15 26 ↙	15 28 ↙
Houston Pilots L - Greens Bayou	12 22 ↙	13 23 ↙	13 24 ↙	13 24 ↙	13 23 ↙	12 22 ↙	10 20 ↙	10 21 ↙	10 21 ↙	10 22 ↙	12 22 ↙	12 22 ↙	12 22 ↙	12 22 ↙	12 22 ↙	10 22 ↙	10 21 ↙	10 21 ↙	10 21 ↙	12 23 ↙	13 23 ↙	13 23 ↙	15 26 ↙	15 28 ↙
Houston Pilots K - Shell Crude	12 22 ↙	13 23 ↙	13 24 ↙	13 23 ↙	13 23 ↙	12 22 ↙	10 20 ↙	10 21 ↙	10 21 ↙	10 22 ↙	12 22 ↙	12 23 ↙	12 23 ↙	12 23 ↙	12 23 ↙	10 22 ↙	10 22 ↙	10 22 ↙	10 22 ↙	12 23 ↙	13 23 ↙	13 24 ↙	15 26 ↙	15 28 ↙
Houston Pilots J - Lynchburg Ferries	13 22 ↙	13 23 ↙	13 24 ↙	13 23 ↙	13 23 ↙	12 22 ↙	10 20 ↙	10 21 ↙	10 21 ↙	10 22 ↙	12 23 ↙	10 23 ↙	10 23 ↙	10 23 ↙	10 23 ↙	10 22 ↙	10 22 ↙	10 22 ↙	10 22 ↙	12 23 ↙	13 24 ↙	13 24 ↙	15 26 ↙	16 28 ↙
Houston Pilots I - Exxon 3	15 22 ↙	15 23 ↙	15 24 ↙	15 23 ↙	15 23 ↙	15 22 ↙	15 21 ↙	15 22 ↙	16 22 ↙	16 22 ↙	17 24 ↙	18 24 ↙	18 24 ↙	18 25 ↙	18 25 ↙	17 24 ↙	17 24 ↙	17 24 ↙	16 23 ↙	17 24 ↙	17 24 ↙	17 25 ↙	18 26 ↙	18 28 ↙
Houston Pilots H - Morgans Point	14 22 ↙	15 23 ↙	15 23 ↙	15 23 ↙	15 23 ↙	15 22 ↙	15 21 ↙	15 22 ↙	16 22 ↙	16 22 ↙	17 24 ↙	17 24 ↙	17 25 ↙	18 25 ↙	17 24 ↙	17 24 ↙	17 24 ↙	17 24 ↙	16 23 ↙	17 24 ↙	17 24 ↙	17 25 ↙	18 26 ↙	18 28 ↙
Houston Pilots G - 75/76	15 23 ↙	15 24 ↙	15 24 ↙	15 24 ↙	16 24 ↙	16 24 ↙	16 22 ↙	16 23 ↙	17 24 ↙	17 24 ↙	20 26 ↙	20 26 ↙	20 28 ↙	20 28 ↙	20 28 ↙	20 28 ↙	20 28 ↙	20 28 ↙	18 26 ↙	20 28 ↙	20 28 ↙	20 28 ↙	20 29 ↙	20 30 ↙
Houston Pilots F - 63/64	14 23 ↙	15 24 ↙	15 24 ↙	15 24 ↙	16 24 ↙	16 24 ↙	16 22 ↙	16 23 ↙	17 24 ↙	17 24 ↙	20 26 ↙	20 26 ↙	20 28 ↙	21 28 ↙	21 28 ↙	20 28 ↙	20 28 ↙	20 28 ↙	20 26 ↙	20 28 ↙	20 28 ↙	20 29 ↙	20 29 ↙	20 30 ↙
Houston Pilots E - 51/52	15 23 ↙	15 23 ↙	16 24 ↙	16 24 ↙	17 24 ↙	16 23 ↙	16 22 ↙	16 23 ↙	17 24 ↙	17 24 ↙	20 26 ↙	20 26 ↙	20 28 ↙	20 28 ↙	20 28 ↙	20 28 ↙	20 28 ↙	20 28 ↙	20 26 ↙	20 29 ↙	20 29 ↙	20 29 ↙	20 29 ↙	20 30 ↙
Houston Pilots D - 37/38	14 23 ↙	15 23 ↙	15 23 ↙	15 24 ↙	16 24 ↙	16 23 ↙	16 22 ↙	16 23 ↙	17 24 ↙	17 24 ↙	18 25 ↙	20 26 ↙	20 26 ↙	20 28 ↙	20 28 ↙	20 28 ↙	20 28 ↙	20 28 ↙	18 26 ↙	20 28 ↙	20 28 ↙	20 29 ↙	20 29 ↙	20 29 ↙
Houston Pilots C - 25/26	14 22 ↙	15 23 ↙	15 23 ↙	15 23 ↙	15 23 ↙	15 22 ↙	15 22 ↙	15 23 ↙	16 23 ↙	16 24 ↙	17 25 ↙	17 26 ↙	18 26 ↙	18 26 ↙	20 28 ↙	20 28 ↙	20 28 ↙	20 28 ↙	18 26 ↙	18 28 ↙	18 28 ↙	18 29 ↙	18 29 ↙	18 29 ↙
Houston Pilots B - 11/12	14 22 ↙	14 22 ↙	15 22 ↙	15 22 ↙	15 22 ↙	15 22 ↙	15 21 ↙	15 22 ↙	15 23 ↙	15 23 ↙	15 25 ↙	16 26 ↙	16 26 ↙	17 26 ↙	17 26 ↙	17 26 ↙	17 26 ↙	17 26 ↙	17 26 ↙	17 28 ↙	17 29 ↙	17 28 ↙	17 28 ↙	17 28 ↙
Houston Pilots A - 1 & 2 Bravo	15 23 ↙	15 24 ↙	15 24 ↙	15 24 ↙	16 24 ↙	16 24 ↙	16 23 ↙	16 24 ↙	17 25 ↙	17 25 ↙	18 28 ↙	20 28 ↙	20 28 ↙	20 29 ↙	20 29 ↙	20 29 ↙	20 30 ↙	20 30 ↙	20 29 ↙	20 30 ↙	20 30 ↙	20 30 ↙	20 30 ↙	20 30 ↙

**NOTE: This is automated data that may/may not agree with the official BAM thinking that's found on the daily slides.
 This data should be used as a guide only.**

Houston Pilots: SAT. 11/2/2024



Forecast Discussion

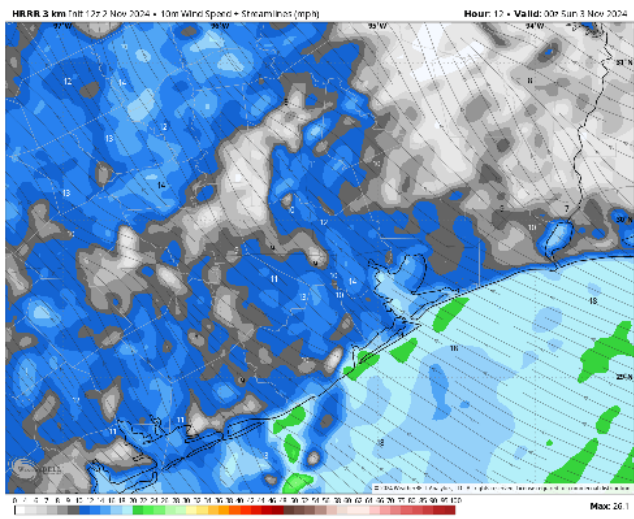
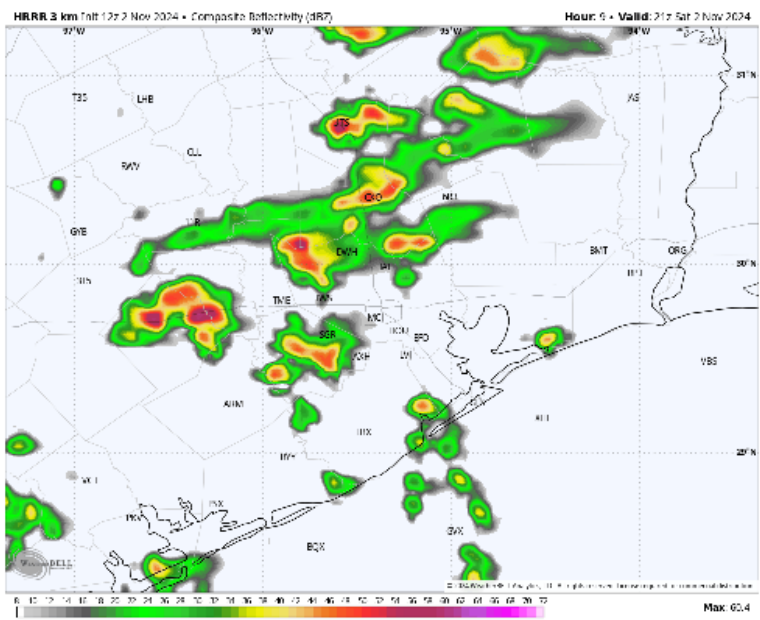
Precip: Favoring multiple rounds of showers and storms to be in play for all stations (50-60%) through 9PM. Dry conditions favored after 9 PM.

Wind: Winds will be out of the SSE throughout the day. **N of Morgan's Point:** Winds will be at 7 – 12 kts for the entire day. **S of Morgan's Point:** Winds will be at 13 - 18 kts throughout the day. **Wind gusts of 20 – 25 MPH are favored for all Stations for the rest of the day.**

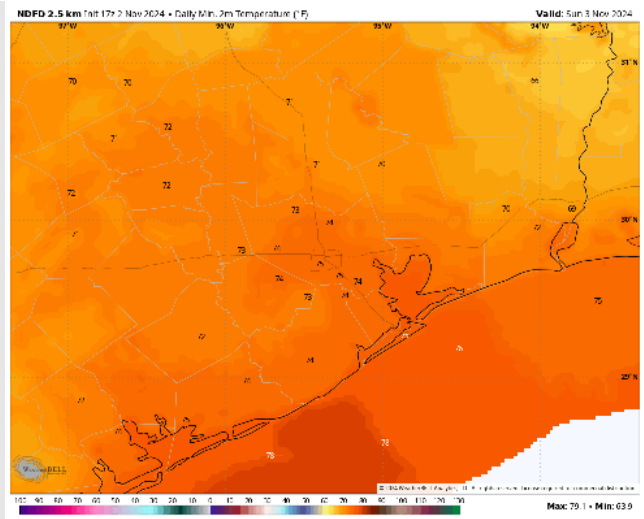
Low Temps: **N of Morgan's Point:** Mid 70s F. **S of Morgan's Point:** Mid to Upper 70s F

Visibility: Visibilities may be reduced in heavy downpours. Otherwise, no fog concerns for any Stations.

Precip Image: 4 PM CT



Wind Speed:
7 PM CT



Low Temps
SUN AM

Houston Pilots: SUN. 11/3/2024



Forecast Discussion

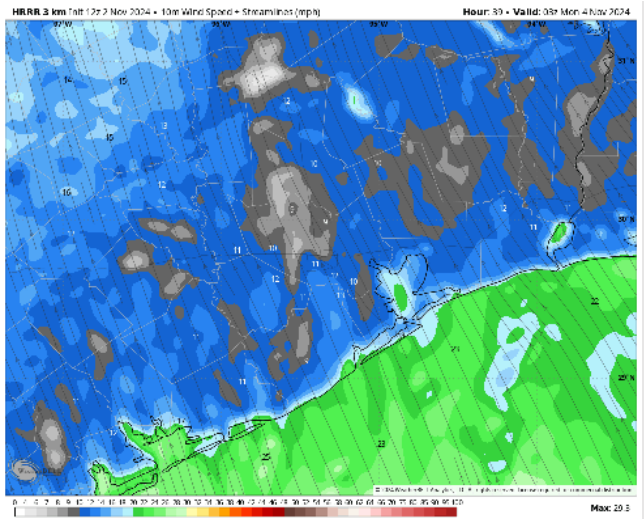
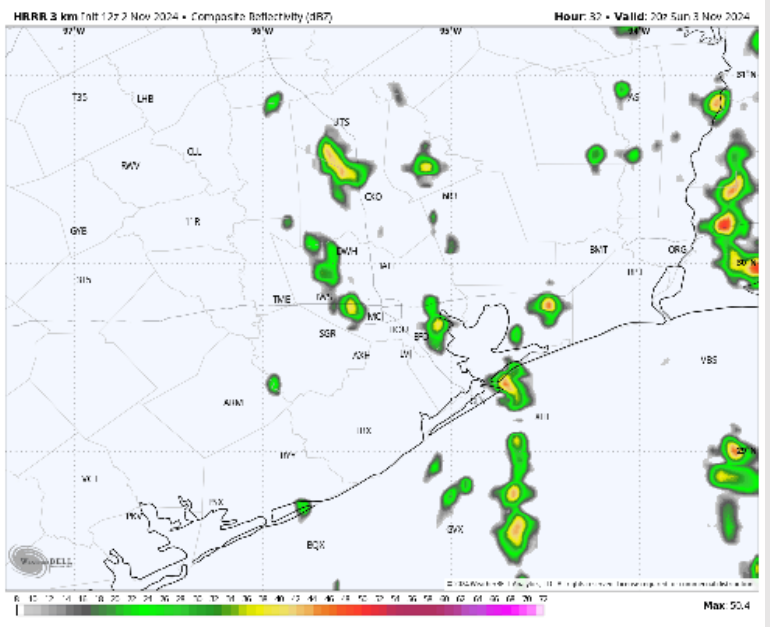
Precip: Isolated showers (20%) will work into the area by 4 AM SUN and continue throughout the morning. Coverage will increase after 12 PM to 30-40% with a few storms in play at all stations.

Wind: Winds will be out of the S/SSE throughout the day on Sunday. **N of Morgan's Point:** Winds will be at 7 - 11 kts through 11AM before increase to 11 - 16 kts for the rest of the day. **S of Morgan's Point:** Winds will be at 15 - 20 kts through 9 PM. After 9 PM winds increase to 18- 23 kts. **Wind gusts of 27 - 33 kts will be in play for all stations after 1 PM SUN.**

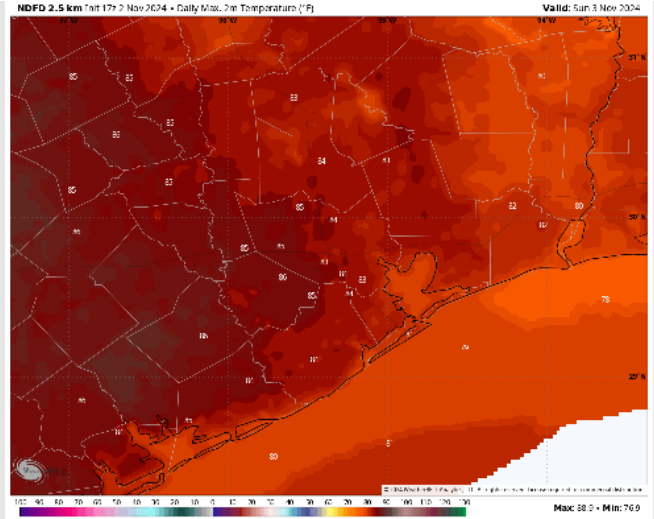
High Temps: **N of Morgan's Point:** Low/Mid 80s F. **S of Morgan's Point:** Upper 70s/Near 80 F.

Visibility: Visibilities may be reduced in heavy downpours. Otherwise, no fog concerns for any Stations.

Precip Image: 2 PM CT



Wind Speed
9 PM CT



High Temps
Sunday

Forecast Discussion

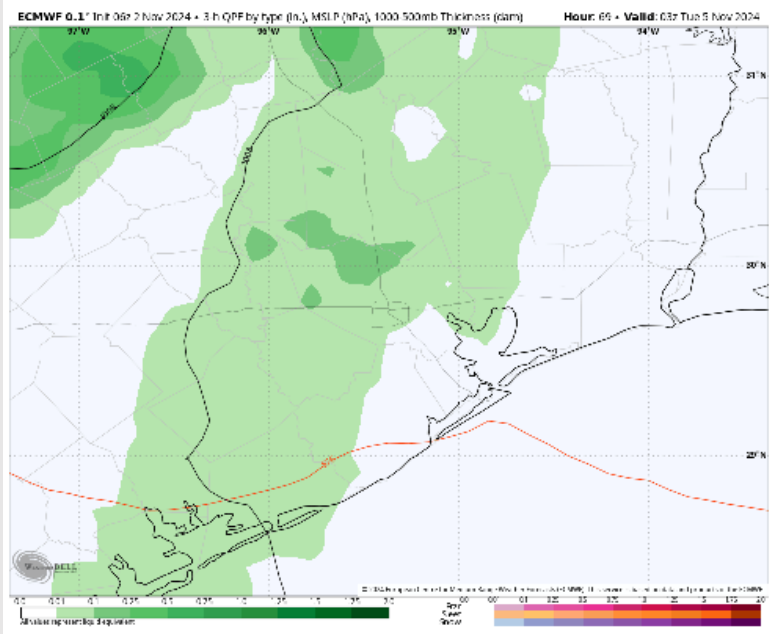
Precip: Scattered (40-50%) showers will be possible throughout the majority of the day on Monday. More widespread showers/storms work in after 8PM and continue throughout the rest of the night.

Wind: Winds will be out of the SE throughout Monday. **N of Morgan's Point:** Winds will be at 15 – 20 kts throughout the day on Monday. **S of Morgan's Point:** Winds will be 20 – 25 kts for the entire day Monday. **Wind gusts of 25 – 30 kts will be possible for all stations Monday, with higher gusts of 32 – 37 kts from 12-7 PM.**

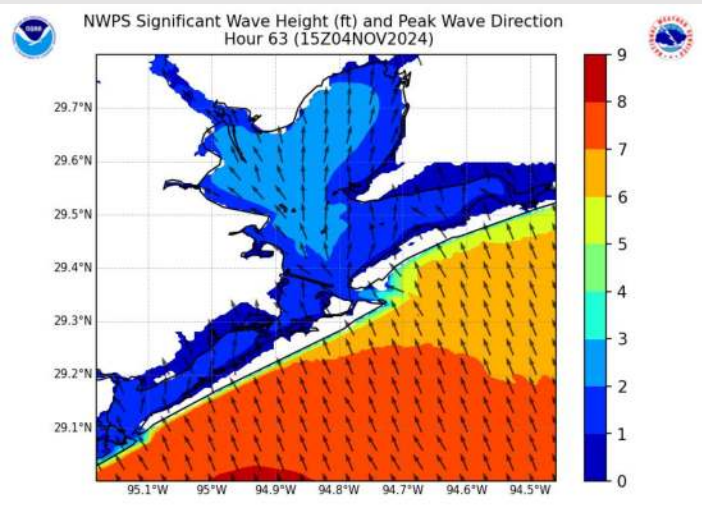
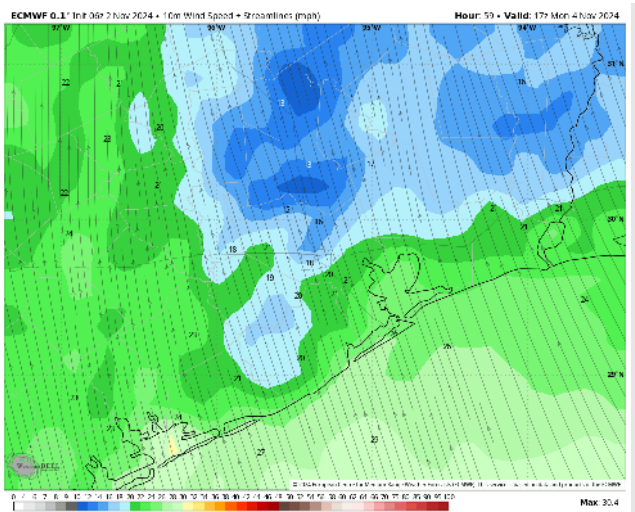
High Temps: **N of Morgan's Point:** Mid 80s F. **S of Morgan's Point:** Upper 70s/Near 80 F.

Visibility: Visibilities may be reduced in heavy downpours. Otherwise, no fog concerns for any Stations.

Precip Image: 9 PM CT



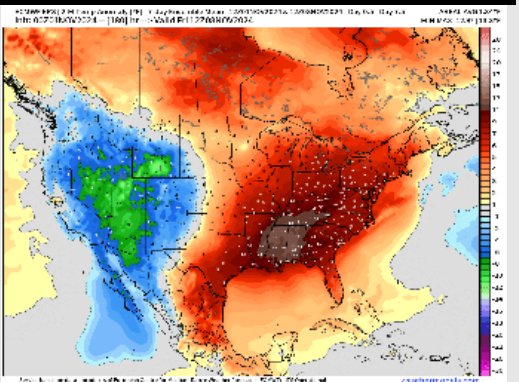
**Wind Speed:
11 AM CT**



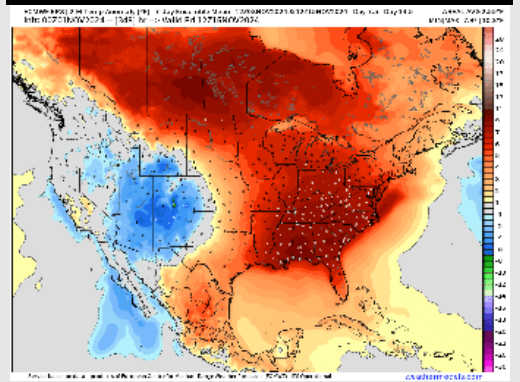
**Wave Heights
9 AM CT**

Houston Pilots: 11/2/24

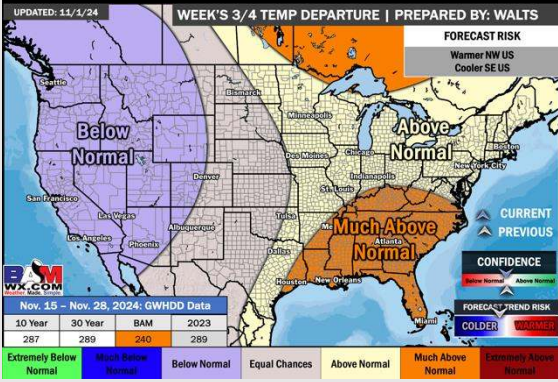
Next 7 Day Temperature Departure



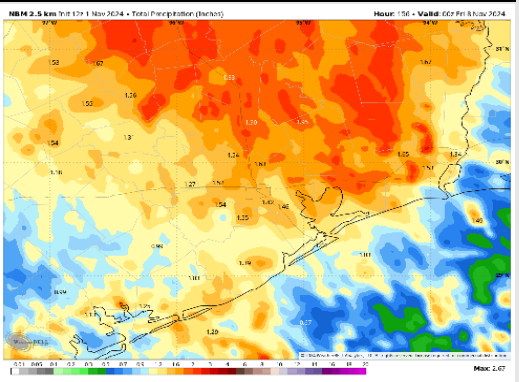
8-14 Day Temperature Departure



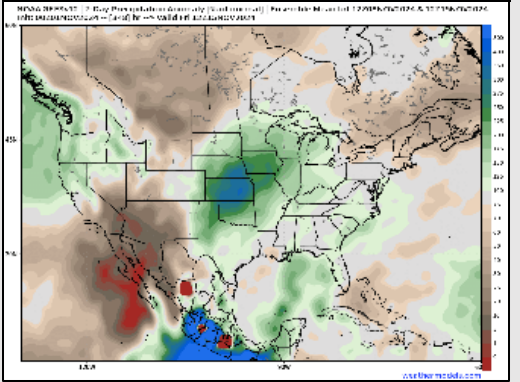
15-30 Day Temperature Departure



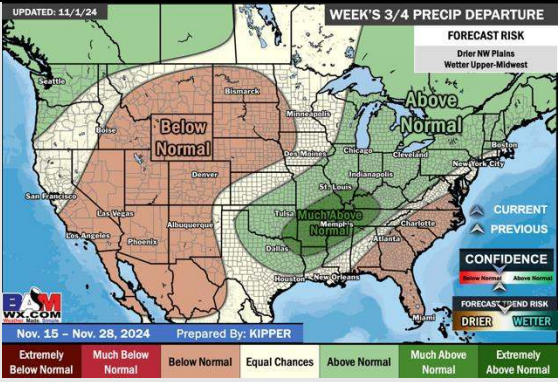
Next 7 Day Total Precipitation



8-14 Day % of Average Precip.



15-30 Day % of Average Precip.



- Temps are expected to be above normal for the week 1 timeframe. Favoring scattered rain chances to continue for the week 1 period.
- Above normal temperatures are favored for week 2. Favoring precipitation to be right around normal depending on the track of the upcoming tropical system.
- Above normal temperatures and near normal precipitation chances are expected for the weeks ¾ timeframe.