

Houston Pilots Forecast Package



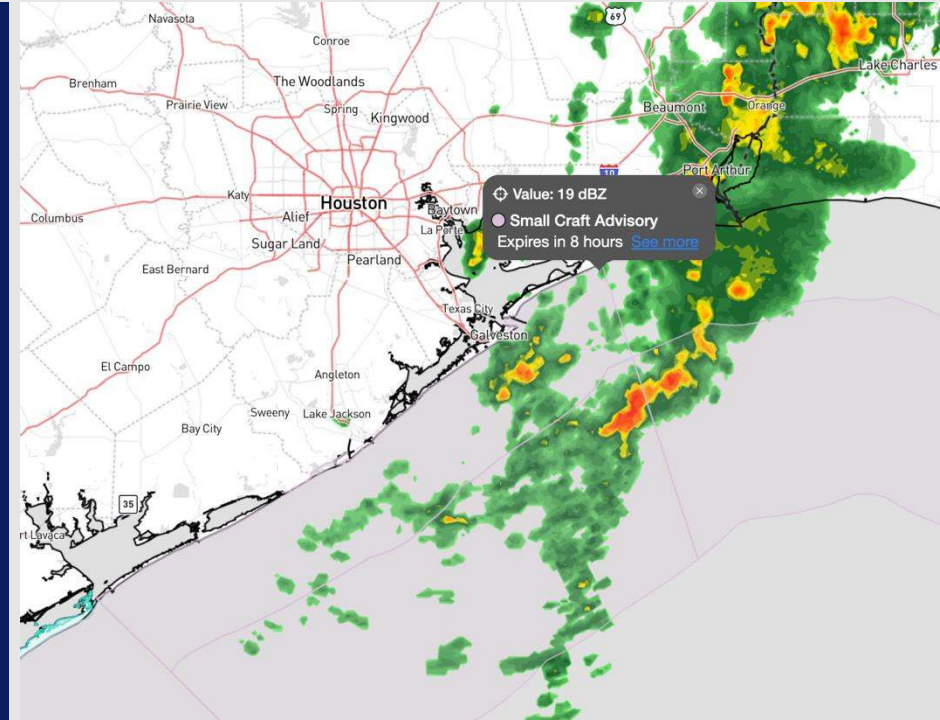
Updated: 12:45 PM CT

Saturday, November 9, 2024

Forecaster: Jonathan Kipper

Weather Headlines

- **Zulu Port Trigger has been activated for elevated wave heights. See wave height slide for more info.**
- **Tropical Storm Rafael is not expected to make impacts to the US. See hurricane tracks and map below.**
- **Rain chances will continue to linger throughout the weekend across the HOU area.**
- **Latest Video Update: [Zulu Conditions Video](#)**



Current Radar: 12:35 PM CT



As always, please do not hesitate to reach out to us with any forecast questions via the chat option on Clarity or our on-call number, **(317)-560-8122** press 1 for forecast questions.

Houston Pilots Port Trigger Update

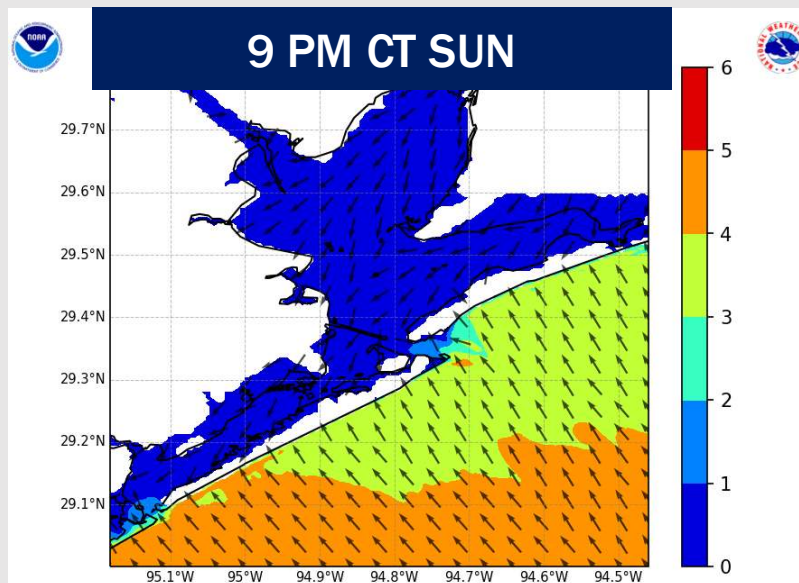
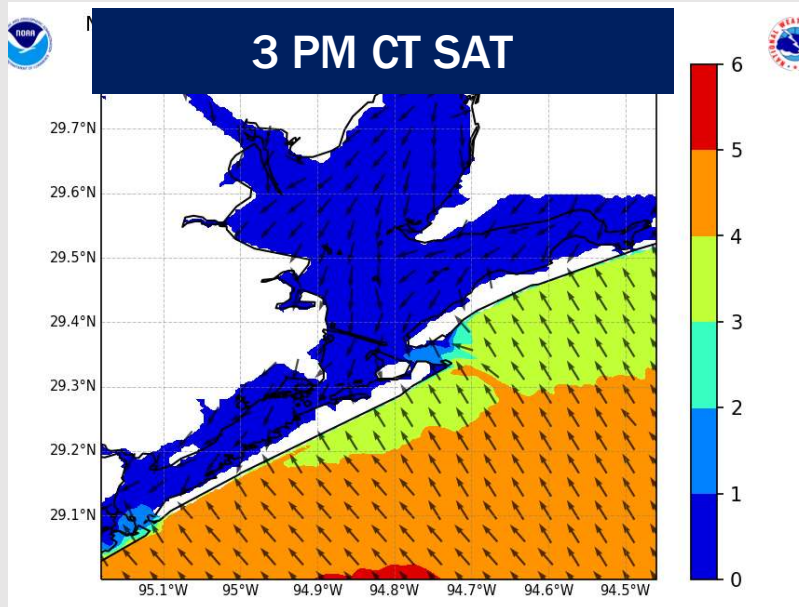


Port Condition	34 KTS+ Sustained Wind Trigger Reached at:	6 Foot Wave Trigger Reached at:	Time Remaining/Trigger Ends At:
Victor	---	---	---
Whiskey	---	---	---
X-Ray	---	---	---
Yankee	---	---	---
Zulu	---	CURRENT	SUN 9 PM

Port Condition	Trigger Definition	Trigger Reached?
Victor	Hurricane entering/developing in Gulf of Mexico that's a threat to the area	NO
Whiskey	72 hours prior to predicted sustained winds of 34+ KTS	NO
X-Ray	48 hours prior to predicted sustained winds of 34+ KTS or 6' wave height	NO
Yankee	24 hours prior to predicted sustained winds of 34+ KTS or 6' wave height	NO
Zulu	12 hours prior to predicted sustained winds of 34+ KTS or 6' wave height	YES

NOTES: Tropical Storm Rafael continues to work across the Gulf of Mexico. Waves will continue to increase through Saturday for HOU. Wave heights of at least 6' can be expected throughout SAT and most of SUN. The increased wave heights are expected to linger throughout SUN before gradually decreasing below 6' by 9 PM CT SUN.

Wave Height Forecast Update



Wave heights of 5'-7', with infrequent potential for up to 8' will be possible throughout the PM hours SAT and into SUN.

Favor wave heights to gradually decrease during the day on SUN, although localized instances of 6'+ wave heights can continue throughout most of SUN.

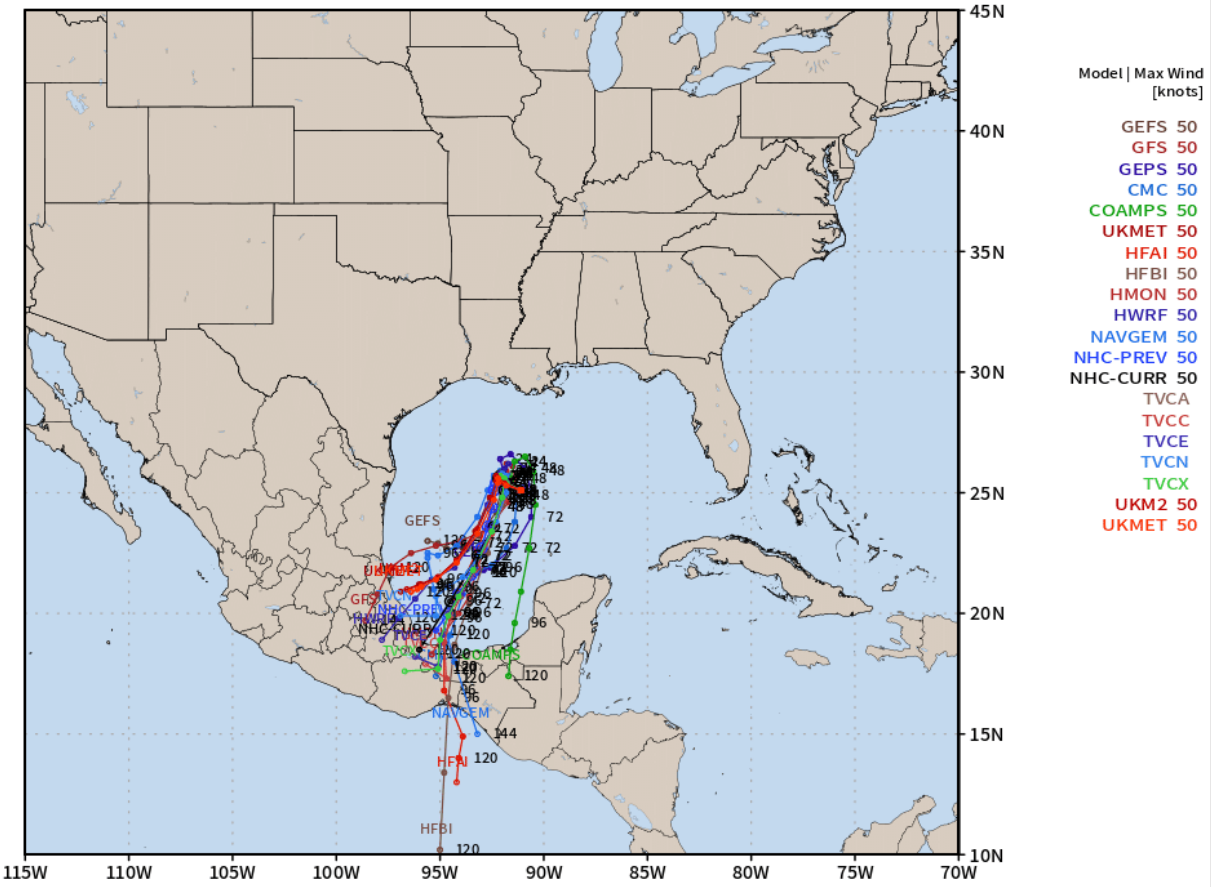
Favoring the risk of 6"+ wave heights to end by 9 PM CT SUN.

Houston Pilots Tropical Update



Various Hurricane Tracks - Rafael

AL18 RAFAEL Guidance valid: 2024110912



Note: This map includes raw model data from 6 or 12 hours prior. Consult NHC Official Forecasts. Model guidance only expert interpretation required. Source: <https://weathermodels.com>

Tropical Storm Rafael continues to push W further into the Gulf of Mexico.

As Rafael moves further into the Gulf of Mexico, we are expecting Rafael to continue to weaken before turning southwestward towards Mexico.

Confidence remains in the SW/S track and impacts for Houston are not favored.

More information on the next slide.

Houston Pilots Tropical Update

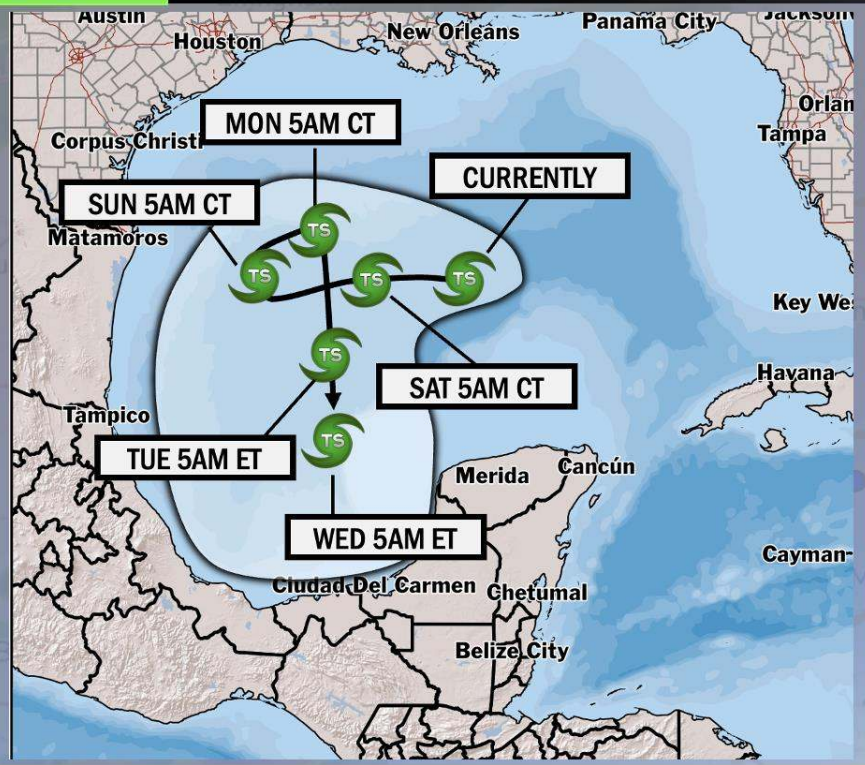


Tropical Storm Rafael Update

TROPICAL INSIGHT

9:50 PM CT Friday, November 8, 2024

Forecaster: Feick



TIMING: FRI 11/8 – WED 11/13

FORECAST NOTES:

- ✓ Rafael is favored to continue as a Tropical Storm through the Gulf, with further weakening expected into the weekend.
- ✓ While confidence remains low on the exact track of this storm, impacts to the US are not expected.



Houston Pilots Extended Range Visibility Report



Tuesday 11/12/24

Fog not favored for TUE.

Forecast Confidence



Thursday 11/14/24

Fog not favored for THU.

Forecast Confidence



Wednesday 11/13/24

Fog not favored for WED.

Forecast Confidence



Chance for Fog

Tuesday AM	Unlikely
Tuesday PM	Unlikely
Wednesday AM	Unlikely
Wednesday PM	Unlikely
Thursday AM	Unlikely
Thursday PM	Unlikely

Houston Pilots Visibility Chart (miles)



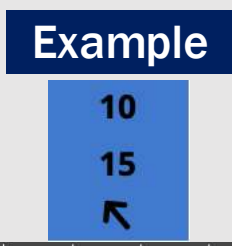
Forecast Confidence



Visibility	Sat 2 pm	Sat 3 pm	Sat 4 pm	Sat 5 pm	Sat 6 pm	Sat 7 pm	Sat 8 pm	Sat 9 pm	Sat 10 pm	Sat 11 pm	Sun 12 am	Sun 1 am	Sun 2 am	Sun 3 am	Sun 4 am	Sun 5 am	Sun 6 am	Sun 7 am	Sun 8 am	Sun 9 am	Sun 10 am	Sun 11 am	Sun 12 pm	Sun 1 pm
Houston Pilots N - 610 Bridge	10	10	10	10	10	10	10	10	10	7.9	9	7.9	6.9	4.9	4.9	3.9	2.9	2.5	1.6	2.5	4.9	6.9	10	10
Houston Pilots M - Kinder 1	10	10	10	10	10	10	10	10	10	7.9	7.9	6.9	5.9	4.9	4.9	3.9	2.9	2	1.6	2.5	4.9	6.9	10	10
Houston Pilots L - Greens Bayou	10	10	10	10	10	10	10	10	9	7.9	7.9	6.9	5.9	4.9	3.9	2.9	2.9	1.6	1.1	2	4.9	6.9	10	10
Houston Pilots K - Shell Crude	10	10	10	10	10	10	10	10	9	7.9	7.9	6.9	5.9	4.9	3.9	2.9	2.9	1.6	1.6	2	4.9	6.9	10	10
Houston Pilots J - Lynchburg Ferries	10	10	10	10	10	10	10	10	9	7.9	7.9	6.9	5.9	4.9	3.9	2.9	2.9	1.6	1.1	2	4.9	6.9	10	10
Houston Pilots I - Exxon 3	10	10	10	10	10	10	10	10	9	7.9	7.9	6.9	5.9	4.9	3.9	2.9	2.9	1.6	1.1	2	4.9	6.9	10	10
Houston Pilots H - Morgans Point	10	10	10	10	10	10	10	10	9	7.9	7.9	6.9	5.9	4.9	3.9	2.9	2.9	1.6	1.6	2.5	4.9	6.9	10	10
Houston Pilots G - 75/76	10	10	7.9	9	9	10	9	7.9	9	7.9	9	9	6.9	5.9	5.9	4.9	3.9	3.9	3.9	3.9	4.9	6.9	8	9
Houston Pilots F - 63/64	10	10	7.9	9	7.9	10	9	7.9	9	7.9	9	9	6.9	5.9	5.9	4.9	3.9	3.9	3.9	3.9	5.9	6.9	8	9
Houston Pilots E - 51/52	10	9	7.9	7.9	7.9	9	9	7.9	9	7.9	9	9	6.9	5.9	5.9	4.9	4.9	4.9	3.9	3.9	5.9	6.9	8	9
Houston Pilots D - 37/38	10	9	7.9	6.9	7.9	9	9	7.9	9	9	9	7.9	6.9	6.9	5.9	4.9	4.9	4.9	3.9	3.9	5.9	7.9	8	9
Houston Pilots C - 25/26	10	9	7.9	6.9	7.9	9	9	7.9	9	9	9	9	6.9	6.9	6.9	5.9	4.9	4.9	4.9	4.9	5.9	7.9	8	8
Houston Pilots B - 11/12	10	9	7.9	6.9	7.9	9	7.9	7.9	9	9	9	9	6.9	6.9	6.9	5.9	5.9	5.9	4.9	4.9	6.9	7.9	8	8
Houston Pilots A - 1 & 2 Bravo	6.9	2.9	5.9	6.9	6.9	7.9	6.9	7.9	9	7.9	9	9	6.9	6.9	6.9	6.9	6.9	5.9	5.9	5.9	6.9	7.9	8	8

NOTE: This is automated data that may/may not agree with the official B.A.M. thinking that's found on the daily slides or special visibility report slides. This data should be used as a guide only

Houston Pilots Wind Chart



Wind	Sat 2 pm	Sat 3 pm	Sat 4 pm	Sat 5 pm	Sat 6 pm	Sat 7 pm	Sat 8 pm	Sat 9 pm	Sat 10 pm	Sat 11 pm	Sun 12 am	Sun 1 am	Sun 2 am	Sun 3 am	Sun 4 am	Sun 5 am	Sun 6 am	Sun 7 am	Sun 8 am	Sun 9 am	Sun 10 am	Sun 11 am	Sun 12 pm	Sun 1 pm	
Houston Pilots N - 610 Bridge	8 15 ↓	7 15 ↓	7 15 ↓	7 14 ↓	7 14 ↓	6 12 ↓	6 10 ↓	6 10 ↓	6 10 ↓	5 10 ↓	5 10 ↓	5 10 ↓	5 10 ↓	5 10 ↓	6 10 ↓	6 10 ↓	6 12 ↓	6 12 ↓	6 12 ↓	6 13 ↓	6 13 ↓	7 13 ↓	7 14 ↓	7 14 ↓	
Houston Pilots M - Kinder 1	8 15 ↓	8 15 ↓	7 15 ↓	7 14 ↓	7 14 ↓	6 12 ↓	6 10 ↓	6 10 ↓	6 10 ↓	5 10 ↓	5 10 ↓	5 10 ↓	5 10 ↓	5 10 ↓	6 10 ↓	6 10 ↓	6 12 ↓	6 12 ↓	6 12 ↓	6 13 ↓	7 13 ↓	7 13 ↓	7 14 ↓	7 14 ↓	
Houston Pilots L - Greens Bayou	8 15 ↓	8 15 ↓	8 14 ↓	7 14 ↓	6 13 ↓	6 12 ↓	6 10 ↓	5 10 ↓	5 10 ↓	5 10 ↓	5 10 ↓	5 10 ↓	5 10 ↓	5 10 ↓	5 10 ↓	6 10 ↓	6 12 ↓	6 12 ↓	6 12 ↓	6 13 ↓	6 13 ↓	7 13 ↓	7 14 ↓	7 14 ↓	
Houston Pilots K - Shell Crude	8 15 ↓	8 15 ↓	8 14 ↓	7 14 ↓	6 13 ↓	6 12 ↓	6 10 ↓	5 10 ↓	5 10 ↓	5 10 ↓	5 10 ↓	5 10 ↓	5 10 ↓	5 10 ↓	5 10 ↓	6 10 ↓	6 12 ↓	6 12 ↓	6 12 ↓	6 13 ↓	6 13 ↓	7 13 ↓	7 14 ↓	7 14 ↓	
Houston Pilots J - Lynchburg Ferries	8 15 ↓	8 15 ↓	7 14 ↓	7 14 ↓	6 13 ↓	6 10 ↓	5 10 ↓	5 10 ↓	5 9 ↓	5 9 ↓	3 9 ↓	3 9 ↓	3 9 ↓	5 9 ↓	5 10 ↓	5 10 ↓	5 10 ↓	5 12 ↓	6 12 ↓	6 13 ↓	6 13 ↓	7 13 ↓	7 14 ↓	7 14 ↓	
Houston Pilots I - Exxon 3	10 16 ↓	10 16 ↓	9 15 ↓	9 15 ↓	8 14 ↓	8 13 ↓	8 12 ↓	8 12 ↓	8 12 ↓	8 12 ↓	8 12 ↓	8 12 ↓	8 12 ↓	8 13 ↓	8 13 ↓	8 13 ↓	8 13 ↓	8 13 ↓	9 13 ↓	8 14 ↓	8 14 ↓	8 14 ↓	8 14 ↓	8 15 ↓	9 15 ↓
Houston Pilots H - Morgans Point	10 16 ↓	10 16 ↓	9 15 ↓	9 15 ↓	8 14 ↓	8 13 ↓	8 12 ↓	8 12 ↓	8 12 ↓	8 12 ↓	8 12 ↓	8 12 ↓	8 12 ↓	8 13 ↓	8 13 ↓	8 13 ↓	8 13 ↓	8 13 ↓	8 14 ↓	8 14 ↓	8 14 ↓	8 14 ↓	8 14 ↓	8 15 ↓	9 15 ↓
Houston Pilots G - 75/76	10 16 ↓	10 17 ↓	10 16 ↓	10 16 ↓	9 15 ↓	9 14 ↓	9 13 ↓	9 13 ↓	9 13 ↓	9 13 ↓	9 13 ↓	9 14 ↓	9 14 ↓	9 14 ↓	10 14 ↓	10 15 ↓	10 15 ↓	10 15 ↓	10 16 ↓	10 16 ↓	10 16 ↓	10 16 ↓	9 15 ↓	9 15 ↓	9 16 ↓
Houston Pilots F - 63/64	10 16 ↓	9 17 ↓	9 16 ↓	9 16 ↓	9 15 ↓	9 14 ↓	9 13 ↓	9 13 ↓	9 14 ↓	9 14 ↓	9 14 ↓	9 14 ↓	9 14 ↓	10 14 ↓	10 14 ↓	10 15 ↓	10 15 ↓	10 16 ↓	10 16 ↓	10 16 ↓	10 16 ↓	10 16 ↓	10 16 ↓	9 15 ↓	9 16 ↓
Houston Pilots E - 51/52	10 17 ↓	10 17 ↓	9 16 ↓	10 16 ↓	10 15 ↓	9 14 ↓	9 14 ↓	9 14 ↓	9 14 ↓	9 14 ↓	9 14 ↓	9 14 ↓	9 14 ↓	10 14 ↓	10 15 ↓	10 15 ↓	10 16 ↓	10 16 ↓	10 16 ↓	10 16 ↓	10 16 ↓	10 16 ↓	10 16 ↓	10 16 ↓	10 17 ↓
Houston Pilots D - 37/38	10 17 ↓	10 17 ↓	10 16 ↓	10 16 ↓	10 15 ↓	9 15 ↓	10 14 ↓	9 14 ↓	9 14 ↓	9 14 ↓	9 14 ↓	9 14 ↓	9 14 ↓	10 14 ↓	10 15 ↓	10 15 ↓	10 16 ↓	10 16 ↓	10 16 ↓	10 17 ↓	10 17 ↓	10 17 ↓	10 16 ↓	10 16 ↓	10 17 ↓
Houston Pilots C - 25/26	10 17 ↓	10 17 ↓	10 17 ↓	10 17 ↓	10 15 ↓	10 15 ↓	10 15 ↓	9 15 ↓	9 15 ↓	9 15 ↓	9 14 ↓	9 14 ↓	9 14 ↓	9 15 ↓	10 15 ↓	10 15 ↓	10 16 ↓	10 16 ↓	10 16 ↓	10 17 ↓	10 17 ↓	10 17 ↓	10 17 ↓	10 17 ↓	10 17 ↓
Houston Pilots B - 11/12	10 17 ↓	10 17 ↓	10 17 ↓	10 17 ↓	10 15 ↓	9 15 ↓	9 15 ↓	8 15 ↓	8 15 ↓	8 15 ↓	8 15 ↓	8 14 ↓	8 14 ↓	8 14 ↓	9 15 ↓	9 15 ↓	9 16 ↓	10 16 ↓	10 16 ↓	10 17 ↓	10 17 ↓	10 17 ↓	10 17 ↓	10 17 ↓	10 17 ↓
Houston Pilots A - 1 & 2 Bravo	12 18 ↓	12 17 ↓	12 18 ↓	12 17 ↓	12 17 ↓	12 17 ↓	12 17 ↓	12 17 ↓	12 17 ↓	12 16 ↓	10 16 ↓	10 15 ↓	10 15 ↓	10 16 ↓	10 16 ↓	10 17 ↓	10 17 ↓	10 17 ↓	10 17 ↓	10 18 ↓	10 18 ↓	13 20 ↓	13 20 ↓	13 18 ↓	12 17 ↓

NOTE: This is automated data that may/may not agree with the official BAM thinking that's found on the daily slides. This data should be used as a guide only.

Houston Pilots: SAT. 11/9/2024



Forecast Discussion

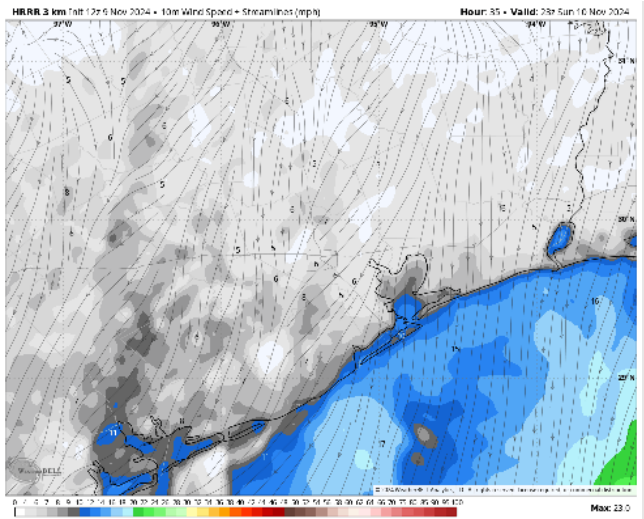
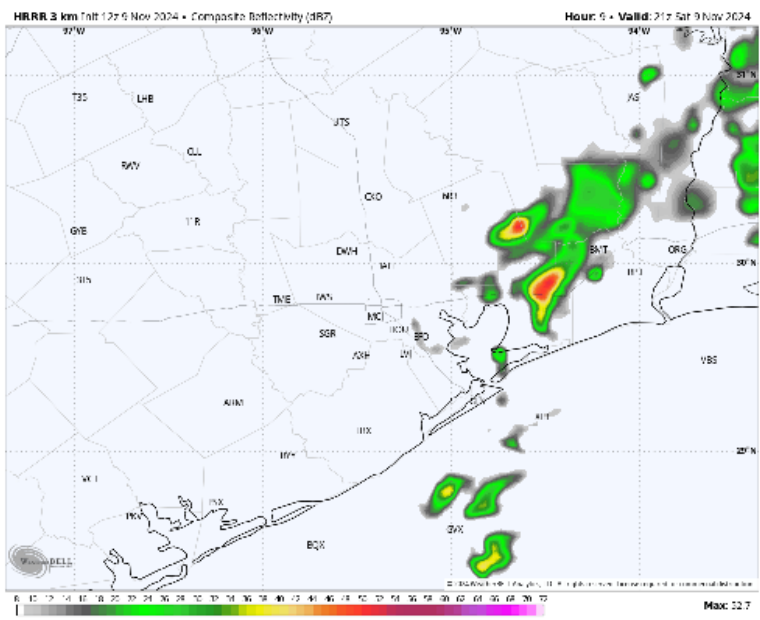
Precip: Scattered showers/a few storms (30-40%) will continue to work across the area throughout the rest of the PM hours.

Wind: Winds will be out of N/NE for the rest of the day. **N of Morgan's Point:** Winds will be at 4 - 9 kts throughout today. **S of Morgan's Point:** Winds will be at 10-15 kts through the day.

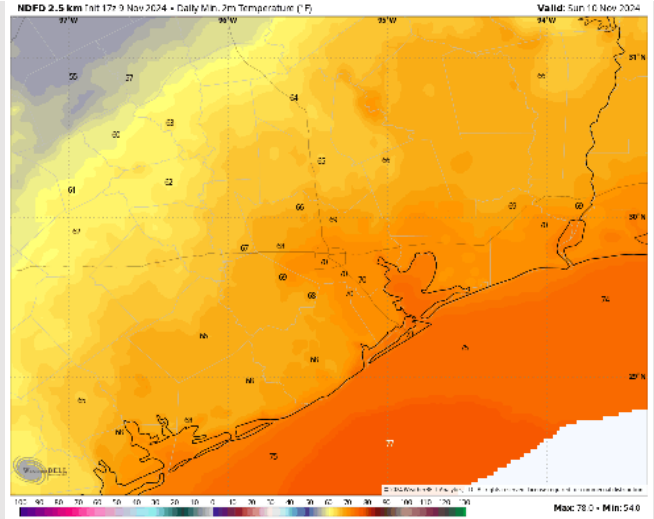
Low Temps: **N of Morgan's Point:** Near 70 F. **S of Morgan's Point:** Mid 70s F.

Visibility: No fog concerns for the rest of the day today.

Precip Image: 3 PM CT



Wind Speed
5 PM CT



Low Temps
SUN AM

Houston Pilots: SUN. 11/10/2024



Forecast Discussion

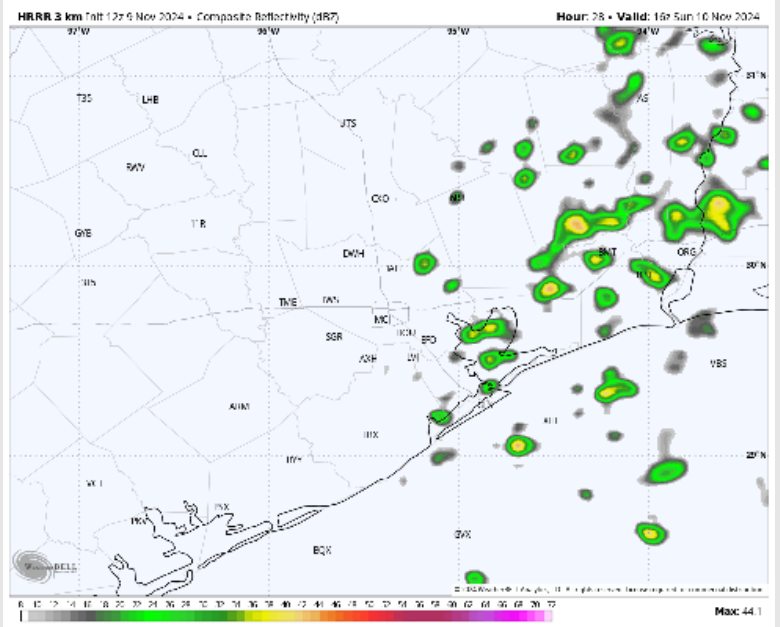
Precip: Isolated (10-20%) showers will be possible through 12 PM at all stations. Chances South of Morgan's Point will continue through 4 PM before dry conditions after 4 PM.

Wind: Winds will be out of the NNE through the day. **N of Morgan's Point:** Winds will be at 4 – 9 kts throughout Sunday. **S of Morgan's Point:** Winds will be 8 – 12 kts through 4PM, before a slight increase to 10 – 15 kts for the rest of the today Sunday.

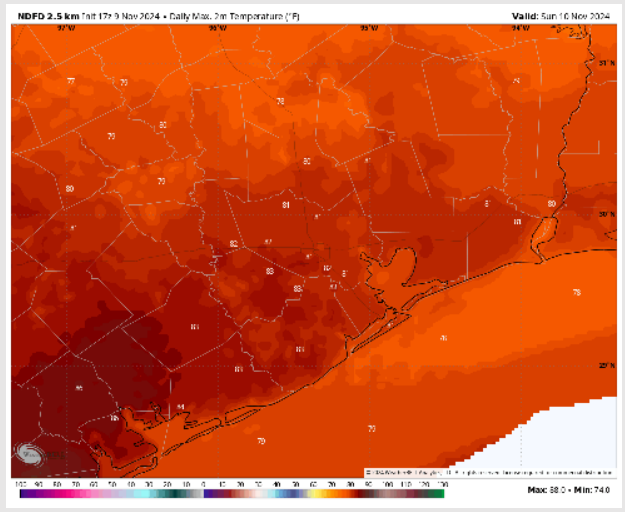
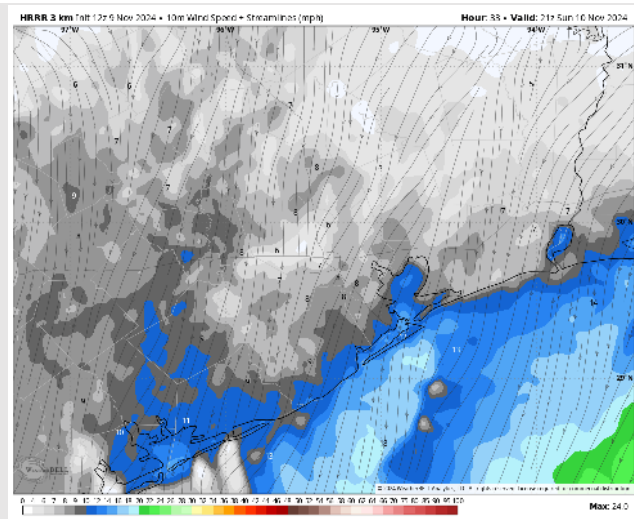
High Temps: **N of Morgan's Point:** Low 80s F. **S of Morgan's Point:** Upper 70s F.

Visibility: Not anticipating any fog concerns for Sunday.

Precip Image: 10 AM CT



Wind Speed:
3 PM CT



High Temps
Sunday

Houston Pilots: MON. 11/11/2024



Forecast Discussion

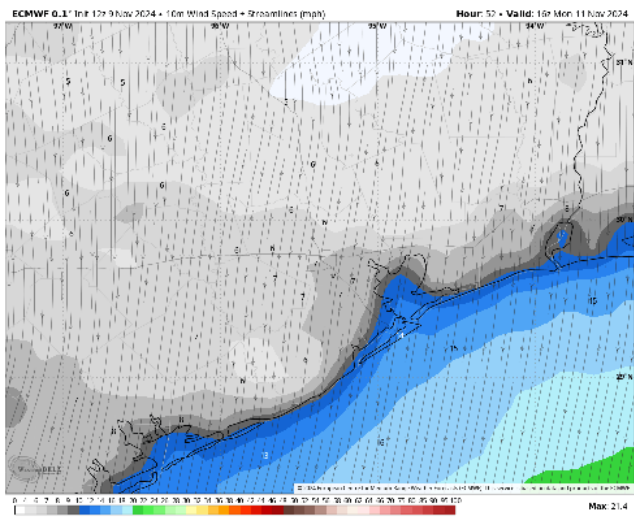
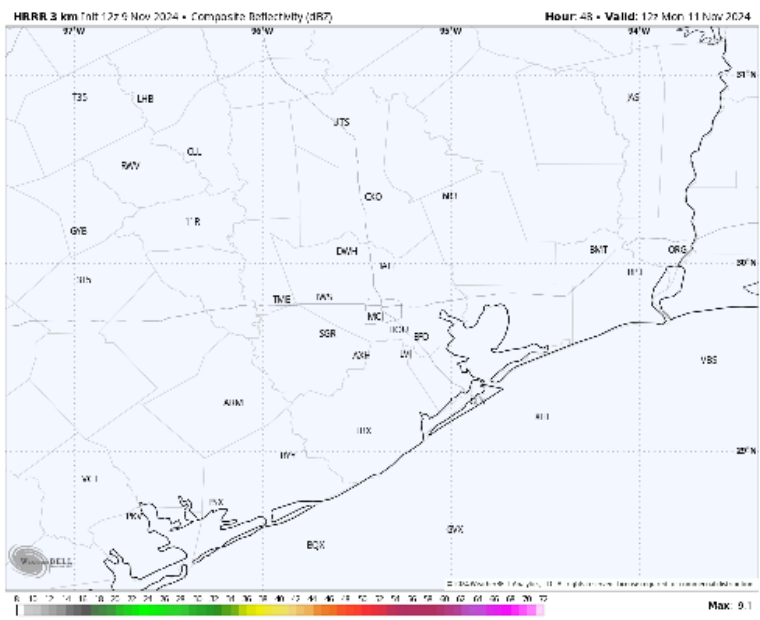
Precip: Favoring dry conditions throughout the day on Monday.

Wind: Winds will be out of the N/NE throughout the day on Monday. **N of Morgan's Point:** Winds at 3 – 7 kts throughout the day on Monday. **S of Morgan's Point:** Winds at 9 - 14 kts through the day on Monday.

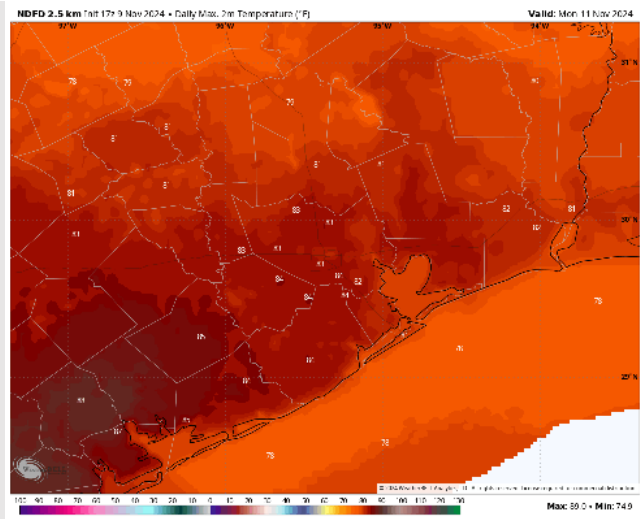
High Temps: **N of Morgan's Point:** Low 80s F. **S of Morgan's Point:** Upper 70s F.

Visibility: Not anticipating any fog concerns for Monday.

Precip Image: 6 AM CT

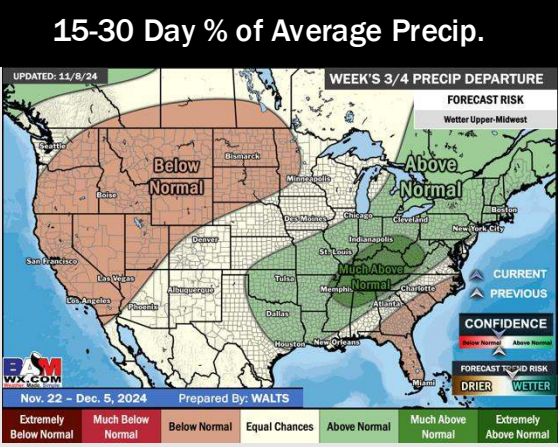
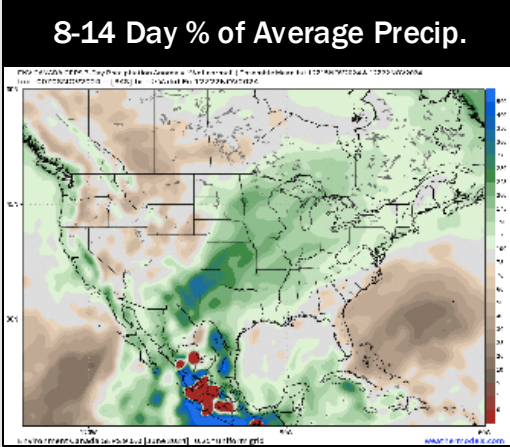
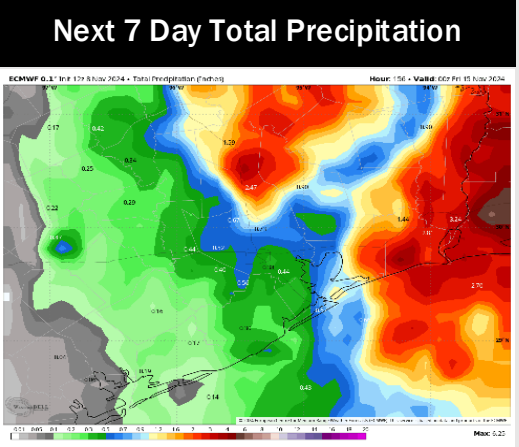
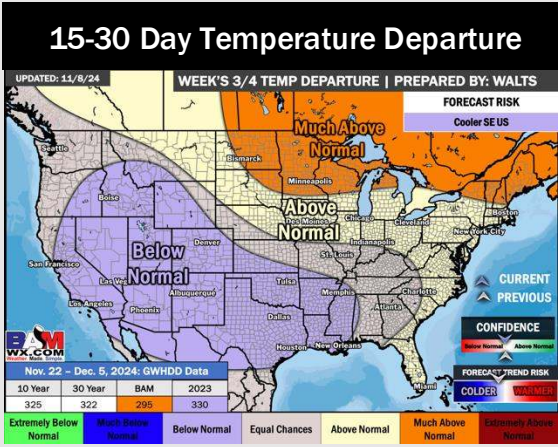
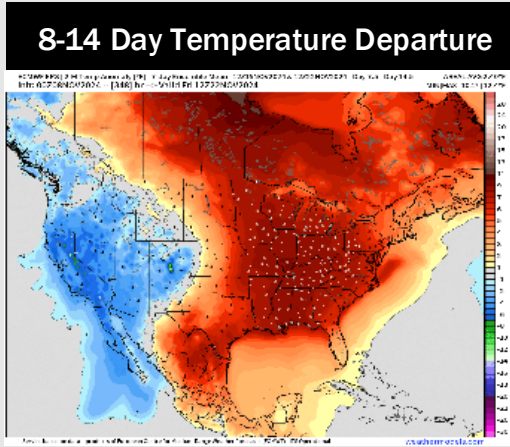
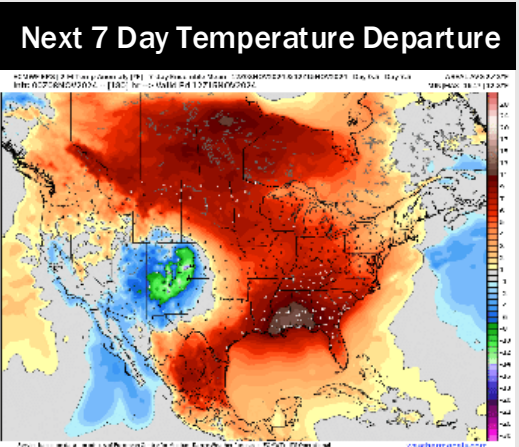


Wind Speed:
10 AM CT



High Temps
Monday

Houston Pilots: 11/9/24



- Temps are expected to be above normal for the week 1 timeframe. Favoring scattered rain chances to continue for the week 1 period.
- Above normal temperatures are favored for week 2. Favoring precipitation to be right around normal
- Below normal temperatures and above normal precipitation chances are expected for the weeks 3/4 timeframe.