

Houston Pilots Forecast Package



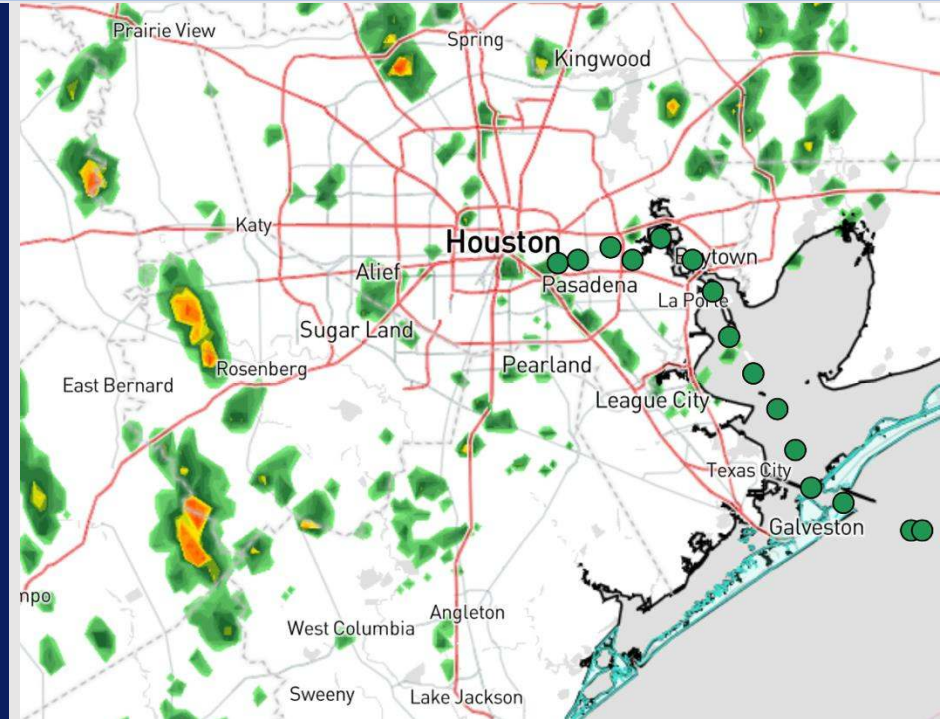
Updated: 1:00 PM CT

Friday, November 8, 2024

Forecaster: Adam Feick

Weather Headlines

- A few light showers and drizzle will remain in play to start the weekend.
- **A few Strong Storms will be possible Saturday, with risks for 35-40 kts wind gusts and hail.**
- **Hurricane Rafael is not expected to make impacts to the US. See hurricane tracks and map below.**



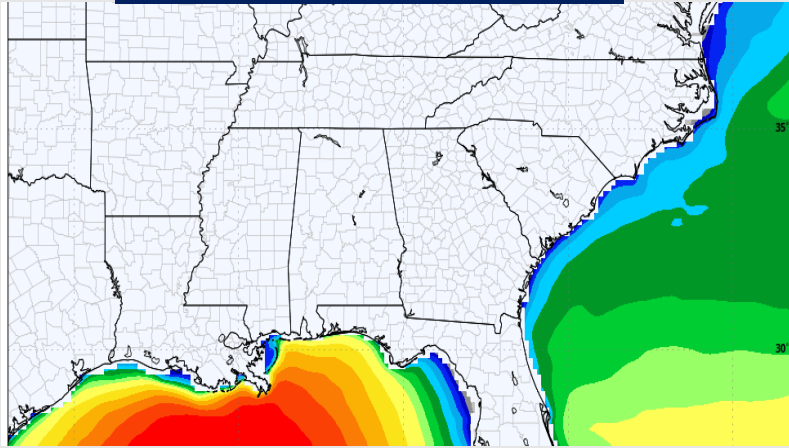
Current Radar: 12:50 PM CT



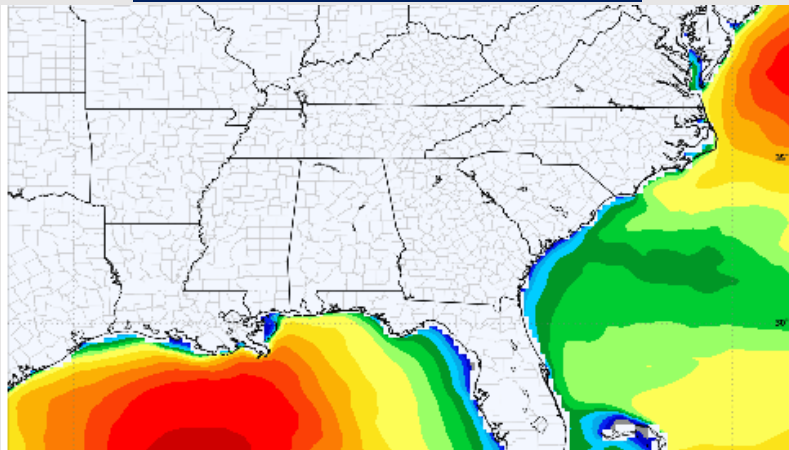
As always, please do not hesitate to reach out to us with any forecast questions via the chat option on Clarity or our on-call number, **(317)-560-8122** press **1** for forecast questions.

Wave Height Forecast Update

6 PM CT FRI



6 AM CT SAT



Wave heights will increase throughout the morning FRI at the Boarding Station reaching 4'-5' by 5PM Friday

Data has backed off wave heights as we currently favor waves to NOT reach the 6' threshold for the boarding station.

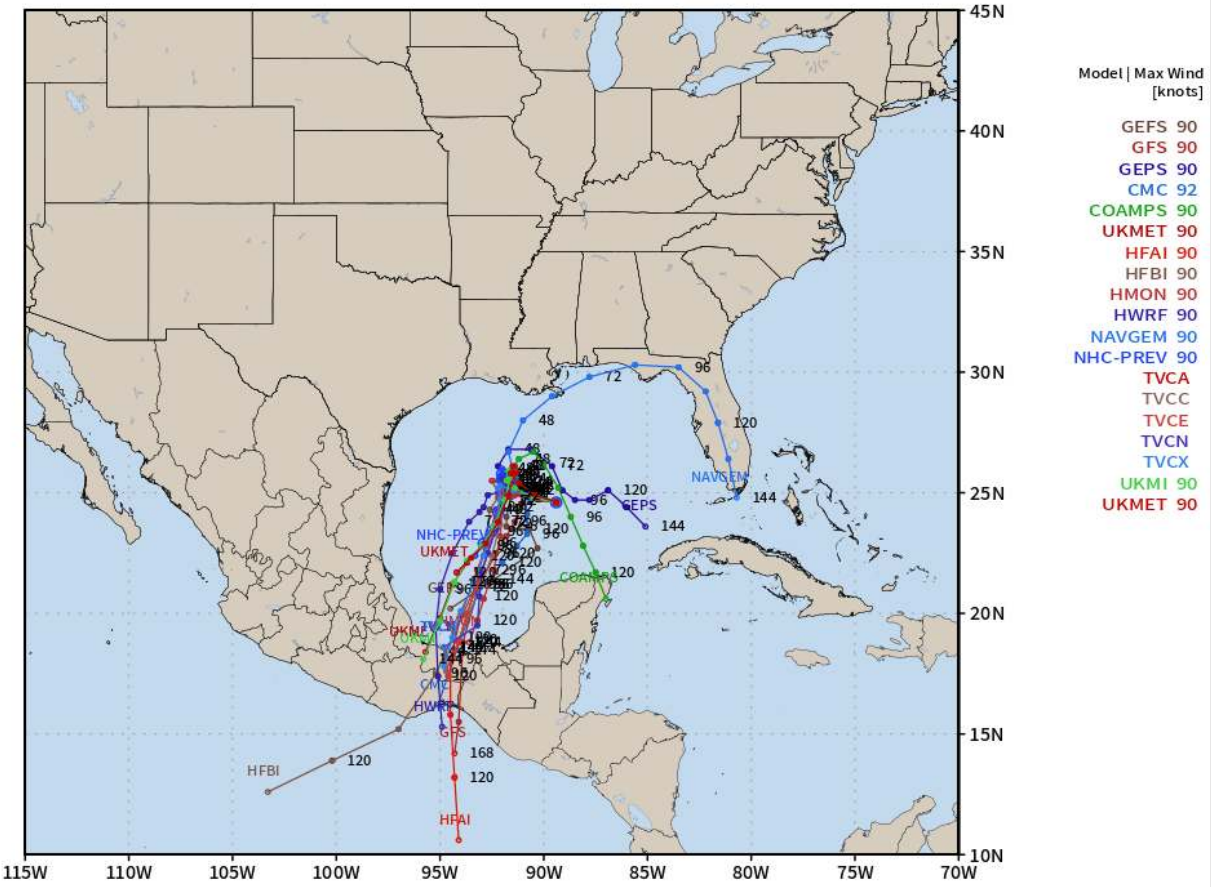
Wave heights will begin to decrease from 4'-5' shortly after 12AM on SUN.

Houston Pilots Tropical Update



Various Hurricane Tracks - Rafael

AL18 RAFAEL Guidance valid: 2024110818



Note: This map includes raw model data from 6 or 12 hours prior. Consult NHC Official Forecasts. Model guidance only expert interpretation required. Source: <https://weathermodels.com>

Hurricane Rafael continues to push WNW further into the Gulf of Mexico.

As Rafael moves further into the Gulf of Mexico, we are expecting Rafael to weaken back into a Tropical storm before turning southwestward towards Mexico.

Confidence remains low on exact track / landfall, with data remaining split on a northward / southward track.

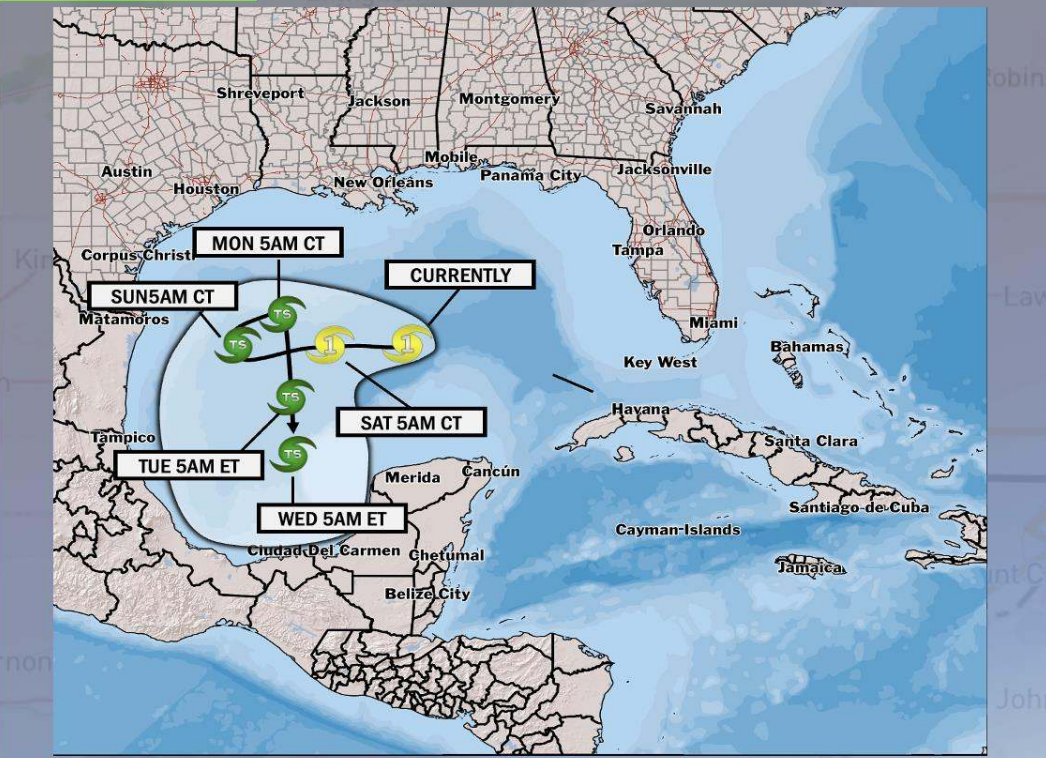
Our latest track (next slide) is leaning more towards a southerly solution.

Houston Pilots Tropical Update



CLARITY Hurricane Rafael Update

TROPICAL INSIGHT 1:00 PM CT Friday, November 8, 2024 Forecaster: Feick



TIMING: FRI 11/8 – WED 11/13

FORECAST NOTES:

- ✓ Rafael is favored to continue as a hurricane through the Gulf, weakening into a tropical storm SAT PM.
- ✓ While confidence remains low on the exact track of this storm, impacts to the US are not expected.



Houston Pilots Extended Range Visibility Report



Monday 11/11/24

Fog not favored for MON.

Forecast Confidence



Wednesday 11/13/24

Fog not favored for WED.

Forecast Confidence



Tuesday 11/12/24

Fog not favored for TUE.

Forecast Confidence



Chance for Fog

Monday AM	Unlikely
Monday PM	Unlikely
Tuesday AM	Unlikely
Tuesday PM	Unlikely
Wednesday AM	Unlikely
Wednesday PM	Unlikely

Houston Pilots Visibility Chart (miles)



Forecast Confidence



Visibility	Fri 1 pm	Fri 2 pm	Fri 3 pm	Fri 4 pm	Fri 5 pm	Fri 6 pm	Fri 7 pm	Fri 8 pm	Fri 9 pm	Fri 10 pm	Fri 11 pm	Sat 12 am	Sat 1 am	Sat 2 am	Sat 3 am	Sat 4 am	Sat 5 am	Sat 6 am	Sat 7 am	Sat 8 am	Sat 9 am	Sat 10 am	Sat 11 am	Sat 12 pm
Houston Pilots N - 610 Bridge	10	10	10	10	10	10	10	10	10	10	9	9	6.9	6.9	6.9	5.9	5.9	5.9	5.9	4.9	3.9	4.9	4.9	6.9
Houston Pilots M - Kinder 1	10	10	10	10	10	10	10	10	10	10	10	10	6.9	6.9	6.9	5.9	5.9	5.9	5.9	4.9	3.9	4.9	4.9	6.9
Houston Pilots L - Greens Bayou	10	10	10	10	10	10	10	10	10	10	10	10	8	6.9	6.9	5.9	5.9	5.9	5.9	4.9	3.9	4.9	4.9	5.9
Houston Pilots K - Shell Crude	10	10	10	10	10	10	10	10	10	10	10	10	8	6.9	6.9	5.9	5.9	5.9	5.9	4.9	3.9	4.9	4.9	5.9
Houston Pilots J - Lynchburg Ferries	10	10	10	10	10	10	10	10	10	10	10	10	8	6.9	6.9	5.9	5.9	5.9	5.9	4.9	3.9	4.9	4.9	5.9
Houston Pilots I - Exxon 3	10	10	10	10	10	10	10	10	10	10	10	10	8	6.9	6.9	5.9	5.9	5.9	5.9	4.9	3.9	4.9	4.9	5.9
Houston Pilots H - Morgans Point	10	10	10	10	10	10	10	10	10	10	10	10	8	6.9	6.9	5.9	5.9	5.9	5.9	4.9	3.9	4.9	4.9	5.9
Houston Pilots G - 75/76	10	10	10	10	10	10	10	10	10	10	9	10	10	8	6.9	5.9	5.9	5.9	5.9	4.9	3.9	3.9	4.9	9
Houston Pilots F - 63/64	10	10	10	10	10	10	10	10	10	10	9	10	10	8	6.9	6.9	5.9	5.9	5.9	4.9	3.9	3.9	4.9	9
Houston Pilots E - 51/52	10	10	10	10	10	10	10	10	10	10	9	10	10	8	6.9	6.9	5.9	5.9	5.9	4.9	3.9	3.9	4.9	8
Houston Pilots D - 37/38	10	10	10	10	10	10	10	10	10	10	10	10	10	8	6.9	6.9	5.9	5.9	6.9	4.9	3.9	3.9	4.9	8
Houston Pilots C - 25/26	10	10	10	10	10	10	10	10	10	10	10	10	10	9	6.9	6.9	6.9	6.9	6.9	4.9	3.9	3.9	4.9	8
Houston Pilots B - 11/12	10	10	10	10	10	10	10	10	10	10	10	10	10	9	8	6.9	6.9	6.9	6.9	5.9	3.9	3.9	4.9	8
Houston Pilots A - 1 & 2 Bravo	10	10	10	9	9	10	10	10	10	9	9	9	10	8	8	6.9	6.9	6.9	6.9	5.9	4.9	4.9	4.9	5

NOTE: This is automated data that may/may not agree with the official B.A.M. thinking that's found on the daily slides or special visibility report slides. This data should be used as a guide only

Houston Pilots Wind Chart



→ Sustained wind 10 Knots
 → Gusts 15 Knots
 → Wind from the SE

Example

10
 15
 ↙

Wind	Fri 1 pm	Fri 2 pm	Fri 3 pm	Fri 4 pm	Fri 5 pm	Fri 6 pm	Fri 7 pm	Fri 8 pm	Fri 9 pm	Fri 10 pm	Fri 11 pm	Sat 12 am	Sat 1 am	Sat 2 am	Sat 3 am	Sat 4 am	Sat 5 am	Sat 6 am	Sat 7 am	Sat 8 am	Sat 9 am	Sat 10 am	Sat 11 am	Sat 12 pm
Houston Pilots N - 610 Bridge	10 22 ↖	10 21 ↖	10 22 ↖	10 21 ↖	10 21 ↖	9 17 ↖	8 15 ↖	7 14 ↖	6 13 ↖	5 12 ↖	5 10 ↖	3 9 ↖	3 8 ↖	3 8 ↖	3 9 ↖	5 9 ↖	6 10 ↖	6 13 ↖	7 14 ↖	8 15 ↖	8 15 ↖	8 15 ↖	8 16 ↖	8 15 ↖
Houston Pilots M - Kinder 1	10 22 ↖	10 22 ↖	10 22 ↖	10 22 ↖	10 20 ↖	9 17 ↖	8 15 ↖	7 14 ↖	6 13 ↖	6 12 ↖	5 10 ↖	3 9 ↖	3 8 ↖	3 9 ↖	3 9 ↖	5 10 ↖	6 10 ↖	6 13 ↖	7 14 ↖	8 15 ↖	8 15 ↖	8 15 ↖	8 16 ↖	8 15 ↖
Houston Pilots L - Greens Bayou	10 22 ↖	12 22 ↖	12 22 ↖	10 21 ↖	10 20 ↖	9 17 ↖	8 15 ↖	6 14 ↖	6 13 ↖	5 12 ↖	5 10 ↖	3 9 ↖	3 8 ↖	3 8 ↖	3 9 ↖	5 10 ↖	5 12 ↖	6 12 ↖	7 14 ↖	7 14 ↖	7 15 ↖	8 15 ↖	8 15 ↖	8 15 ↖
Houston Pilots K - Shell Crude	10 22 ↖	10 22 ↖	10 22 ↖	10 21 ↖	10 20 ↖	9 17 ↖	8 15 ↖	7 14 ↖	6 13 ↖	5 12 ↖	5 10 ↖	3 9 ↖	3 9 ↖	3 8 ↖	3 9 ↖	5 10 ↖	5 12 ↖	6 12 ↖	6 14 ↖	7 14 ↖	7 15 ↖	8 15 ↖	8 15 ↖	8 15 ↖
Houston Pilots J - Lynchburg Ferries	10 21 ↖	12 21 ↖	12 22 ↖	10 21 ↖	10 20 ↖	9 17 ↖	7 15 ↖	6 14 ↖	6 13 ↖	5 10 ↖	3 9 ↖	3 8 ↖	3 8 ↖	3 8 ↖	3 8 ↖	3 9 ↖	5 10 ↖	6 12 ↖	6 13 ↖	6 14 ↖	7 14 ↖	7 15 ↖	8 15 ↖	8 14 ↖
Houston Pilots I - Exxon 3	13 22 ↖	13 22 ↖	13 22 ↖	13 21 ↖	13 20 ↖	13 18 ↖	10 16 ↖	10 15 ↖	9 14 ↖	8 13 ↖	8 13 ↖	7 12 ↖	7 10 ↖	7 10 ↖	7 10 ↖	8 12 ↖	8 12 ↖	8 13 ↖	9 14 ↖	10 15 ↖	9 15 ↖	10 15 ↖	9 16 ↖	9 15 ↖
Houston Pilots H - Morgans Point	13 21 ↖	13 21 ↖	13 21 ↖	13 21 ↖	13 20 ↖	12 18 ↖	10 16 ↖	10 15 ↖	9 15 ↖	8 13 ↖	8 13 ↖	8 12 ↖	7 10 ↖	7 10 ↖	7 10 ↖	8 12 ↖	8 12 ↖	8 13 ↖	9 14 ↖	9 15 ↖	9 15 ↖	9 15 ↖	9 16 ↖	9 15 ↖
Houston Pilots G - 75/76	13 22 ↖	14 22 ↖	14 22 ↖	14 22 ↖	14 22 ↖	13 20 ↖	12 17 ↖	10 16 ↖	10 15 ↖	10 15 ↖	9 14 ↖	9 13 ↖	8 13 ↖	8 13 ↖	8 13 ↖	9 14 ↖	9 15 ↖	10 15 ↖	10 15 ↖	10 15 ↖	10 16 ↖	10 16 ↖	10 17 ↖	10 16 ↖
Houston Pilots F - 63/64	13 22 ↖	13 22 ↖	14 22 ↖	14 22 ↖	14 22 ↖	13 20 ↖	12 17 ↖	10 16 ↖	10 15 ↖	10 15 ↖	9 14 ↖	9 13 ↖	8 13 ↖	8 13 ↖	8 13 ↖	9 14 ↖	9 15 ↖	10 15 ↖	10 15 ↖	10 15 ↖	12 16 ↖	12 16 ↖	10 17 ↖	10 16 ↖
Houston Pilots E - 51/52	13 22 ↖	14 22 ↖	14 22 ↖	14 22 ↖	14 22 ↖	13 20 ↖	13 18 ↖	12 17 ↖	10 16 ↖	10 15 ↖	10 15 ↖	9 14 ↖	9 14 ↖	8 14 ↖	8 14 ↖	9 14 ↖	9 15 ↖	10 15 ↖	10 15 ↖	10 15 ↖	10 16 ↖	12 16 ↖	12 17 ↖	10 17 ↖
Houston Pilots D - 37/38	13 22 ↖	14 22 ↖	14 22 ↖	14 22 ↖	14 21 ↖	13 20 ↖	13 18 ↖	12 17 ↖	10 16 ↖	10 15 ↖	10 15 ↖	9 14 ↖	9 14 ↖	9 14 ↖	9 14 ↖	9 14 ↖	9 15 ↖	10 15 ↖	10 15 ↖	10 15 ↖	10 16 ↖	12 16 ↖	12 17 ↖	10 17 ↖
Houston Pilots C - 25/26	13 22 ↖	13 21 ↖	14 22 ↖	13 21 ↖	13 21 ↖	13 20 ↖	13 18 ↖	12 17 ↖	10 16 ↖	10 16 ↖	9 15 ↖	9 15 ↖	8 14 ↖	8 14 ↖	8 14 ↖	9 14 ↖	9 15 ↖	10 15 ↖	10 15 ↖	10 15 ↖	10 16 ↖	12 16 ↖	12 17 ↖	12 17 ↖
Houston Pilots B - 11/12	13 22 ↖	13 21 ↖	13 21 ↖	13 20 ↖	13 20 ↖	12 20 ↖	10 18 ↖	10 17 ↖	9 17 ↖	9 16 ↖	8 15 ↖	8 15 ↖	8 15 ↖	8 15 ↖	8 15 ↖	8 15 ↖	8 15 ↖	9 15 ↖	9 15 ↖	9 15 ↖	10 16 ↖	10 16 ↖	10 17 ↖	12 17 ↖
Houston Pilots A - 1 & 2 Bravo	14 22 ↖	14 22 ↖	14 22 ↖	14 22 ↖	14 22 ↖	14 22 ↖	14 21 ↖	13 20 ↖	13 20 ↖	13 20 ↖	13 18 ↖	12 17 ↖	12 16 ↖	12 16 ↖	10 16 ↖	10 16 ↖	12 16 ↖	12 16 ↖	12 17 ↖	12 17 ↖	13 17 ↖	13 18 ↖	13 17 ↖	13 18 ↖

NOTE: This is automated data that may/may not agree with the official BAM thinking that's found on the daily slides. This data should be used as a guide only.

Houston Pilots: FRI. 11/8/2024



Forecast Discussion

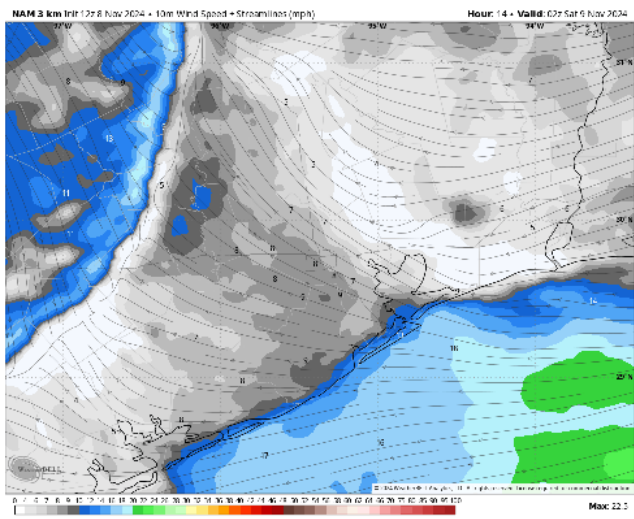
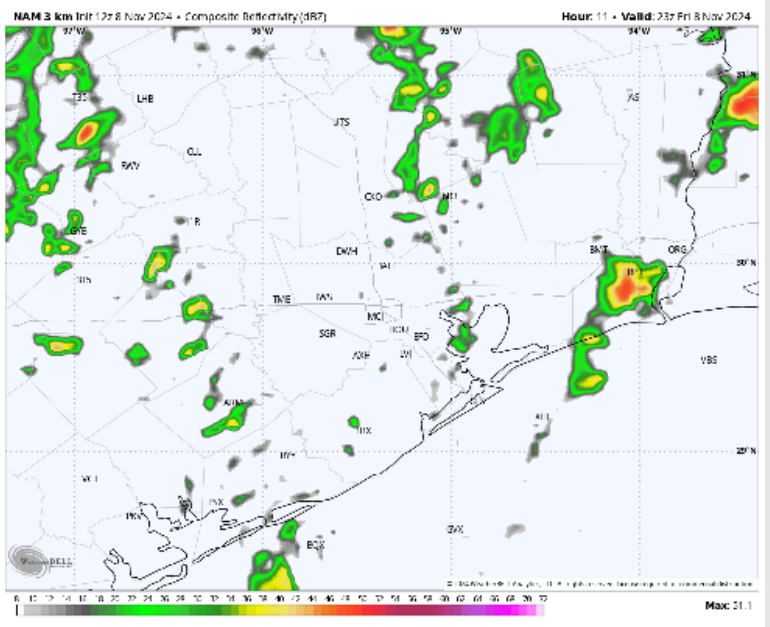
Precip: Isolated, light rain showers (20%) will be possible through 6PM with a few pockets of drizzle through the evening hours.

Wind: Winds will remain out of the ESE for the rest of the day. **N of Morgan's Point:** Winds at 3 – 9 kts for the entire day. **S of Morgan's Point:** Winds at 9 - 14 kts through the rest of the day.

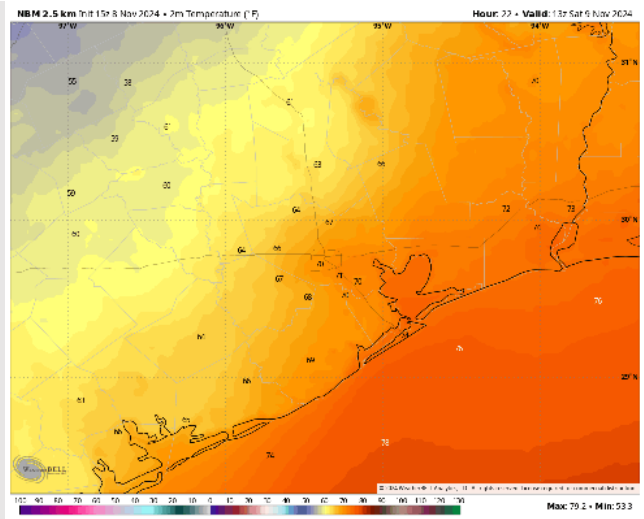
Low Temps: **N of Morgan's Point:** Lower 70 F. **S of Morgan's Point:** Mid 70 F

Visibility: Not anticipating any fog concerns for today.

Precip Image: 5 PM CT



Wind Speed:
8 PM CT



Low Temps
SAT AM

Houston Pilots: SAT. 11/9/2024



Forecast Discussion

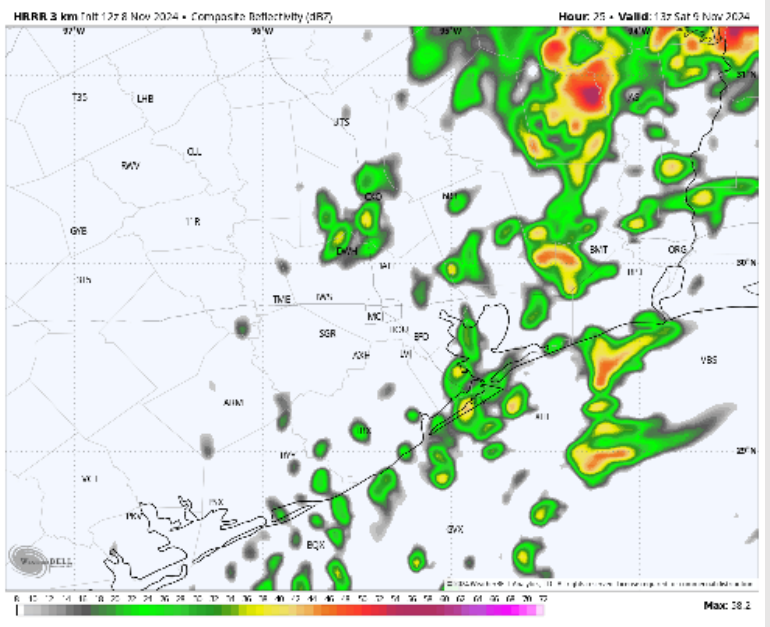
Precip: Scattered activity will work in after 2AM. After 5AM widespread showers/storms will move through for all stations through 2PM before working out. **Strongest cells will be capable of hail and 35-40kts wind gusts.**

Wind: Winds will be out of the NE through 5AM, before shifting to be out of the N for the rest of the day. **N of Morgan's Point:** Winds will be at 4 - 9 kts throughout Saturday. **S of Morgan's Point:** Winds will be at 10-15 kts through the day on Saturday.

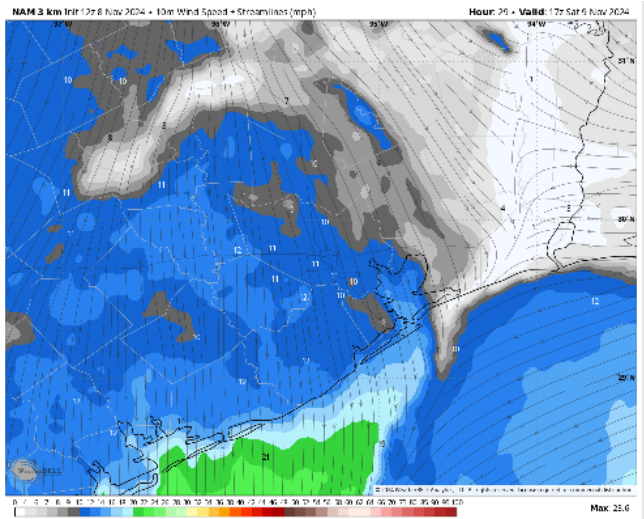
High Temps: **N of Morgan's Point:** Upper 70s. **S of Morgan's Point:** Mid to upper 70s F.

Visibility: No fog concerns for stations on Saturday, however visibility can be reduced brief from heavier showers and storms.

Precip Image: 7 AM CT

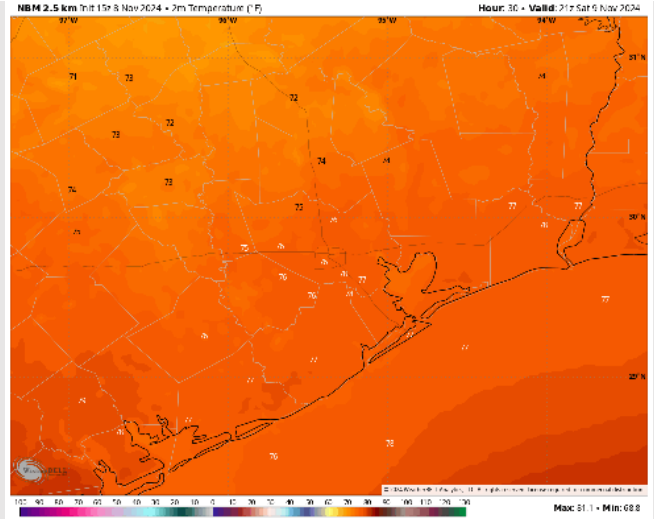


NAM 3 km Inrt 12z 8 Nov 2024 - 10m Wind Speed + Streamlines (m/s)



Wind Speed
11 AM CT

NBM 2.5 km Inrt 15z 8 Nov 2024 - 2m Temperature (°F)



High Temps
Saturday

Houston Pilots: SUN. 11/10/2024



Forecast Discussion

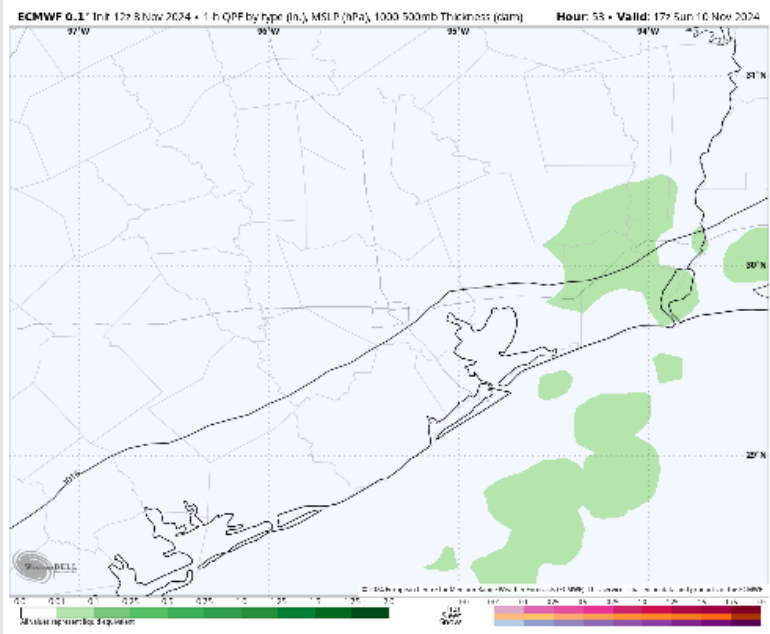
Precip: Isolated (10-20%) showers will be possible from 2AM – 12PM Sunday Mainly S of Morgan’s Point, before conditions remain dry for the rest of the day.

Wind: Winds will be out of the NNE through the day. **N of Morgan’s Point:** Winds will be at 3 – 9 kts throughout Sunday. **S of Morgan’s Point:** Winds will be 8 – 11 kts throughout the day.

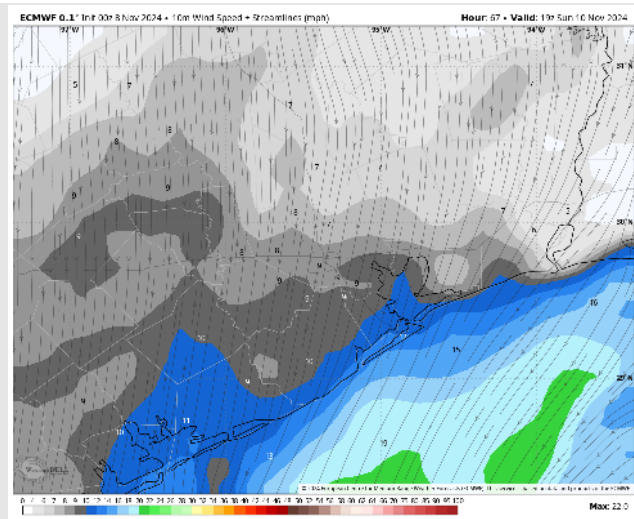
High Temps: **N of Morgan’s Point:** Low 80s F. **S of Morgan’s Point:** Upper 70s F.

Visibility: Not anticipating any fog concerns for Sunday.

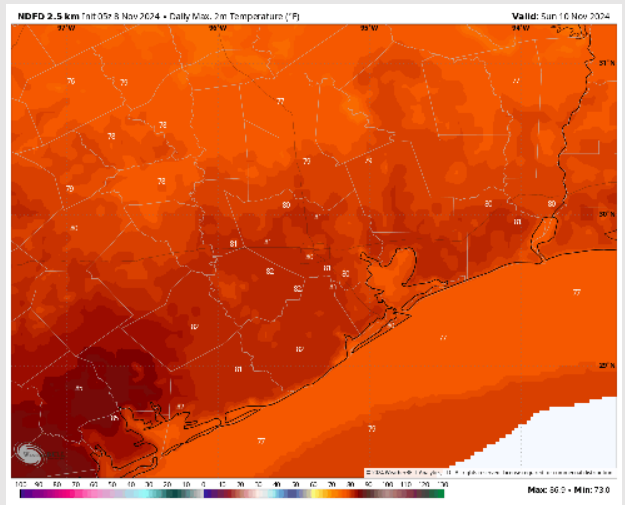
Precip Image: 11 AM CT



Wind Speed:
1 PM CT



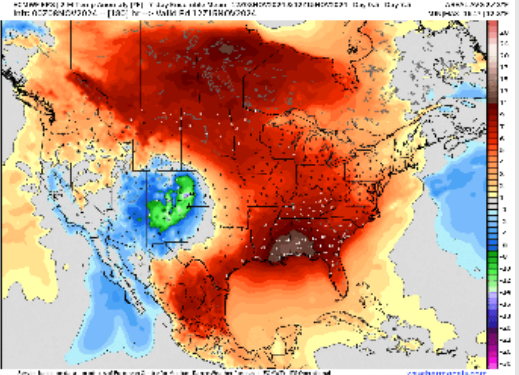
High Temps
Sunday



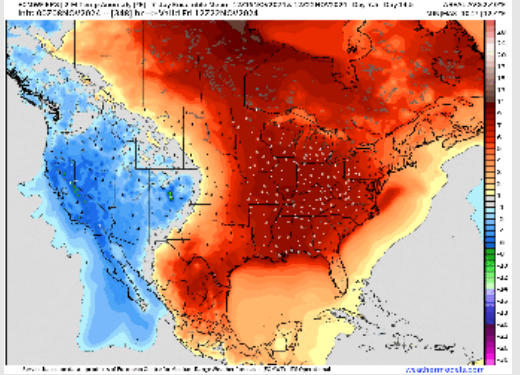
Houston Pilots: 11/8/24



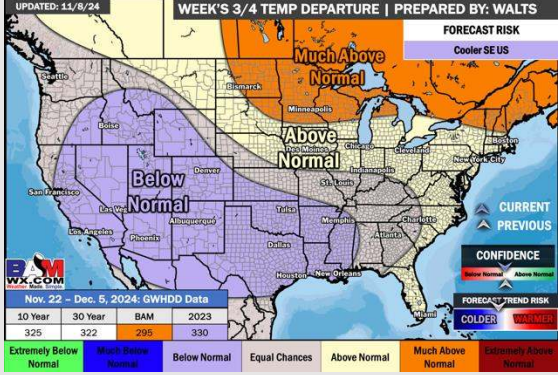
Next 7 Day Temperature Departure



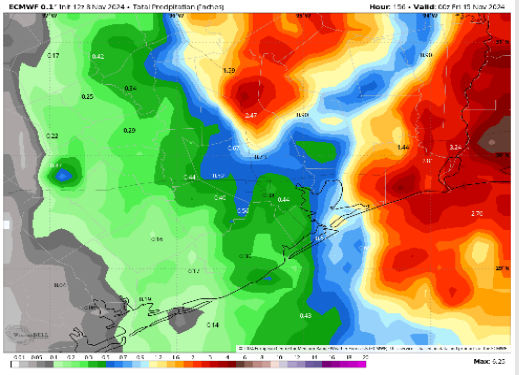
8-14 Day Temperature Departure



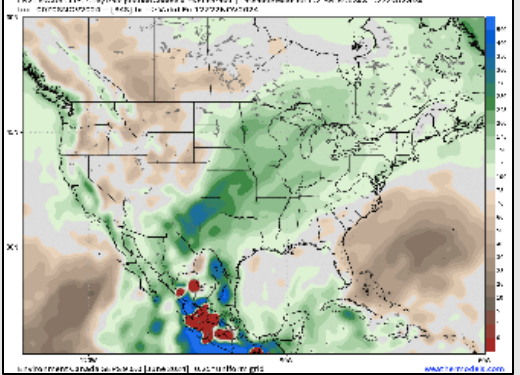
15-30 Day Temperature Departure



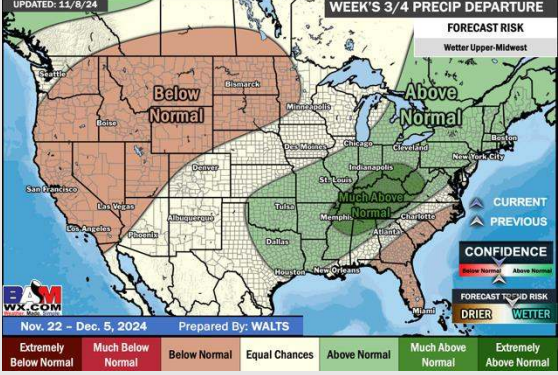
Next 7 Day Total Precipitation



8-14 Day % of Average Precip.



15-30 Day % of Average Precip.



- Temps are expected to be above normal for the week 1 timeframe. Favoring scattered rain chances to continue for the week 1 period.
- Above normal temperatures are favored for week 2. Favoring precipitation to be right around normal
- Below normal temperatures and above normal precipitation chances are expected for the weeks 3/4 timeframe.