

# Houston Pilots Forecast Package



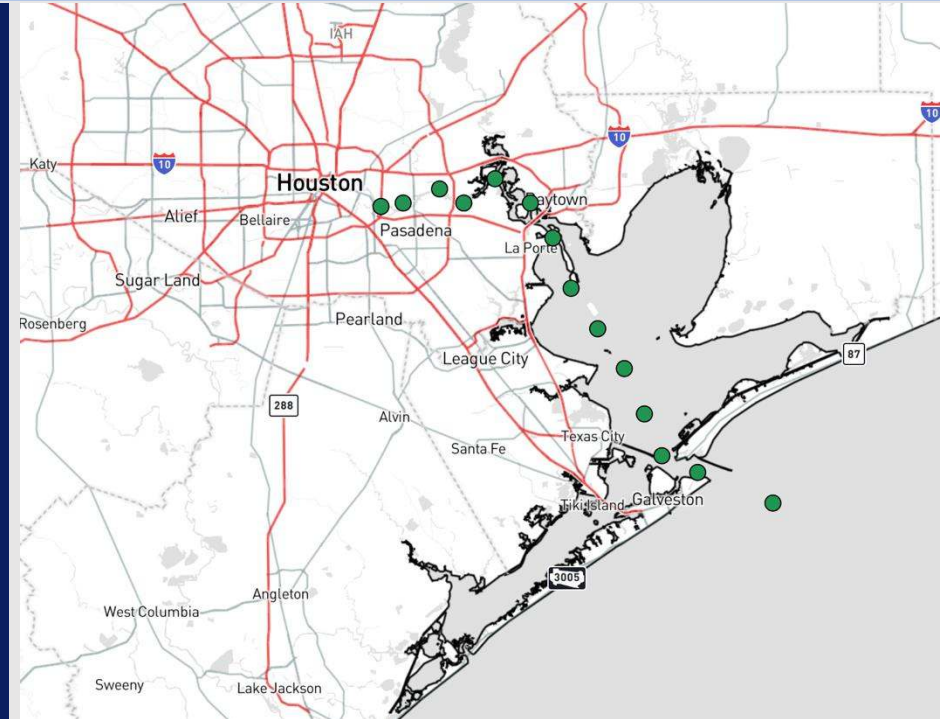
Updated: 12:00 AM CT

Friday, November 8, 2024

Forecaster: Xander Lowry

## Weather Headlines

- A few wind gusts of above 20 kts for stations S. of Morgan's Point will be in play for today.
- **Strong/Severe Storms will be possible Saturday, with risks for 35-40 kts wind gusts and hail.**
- **[Click here for most recent Hurricane Rafael video update! As of THU PM](#)**



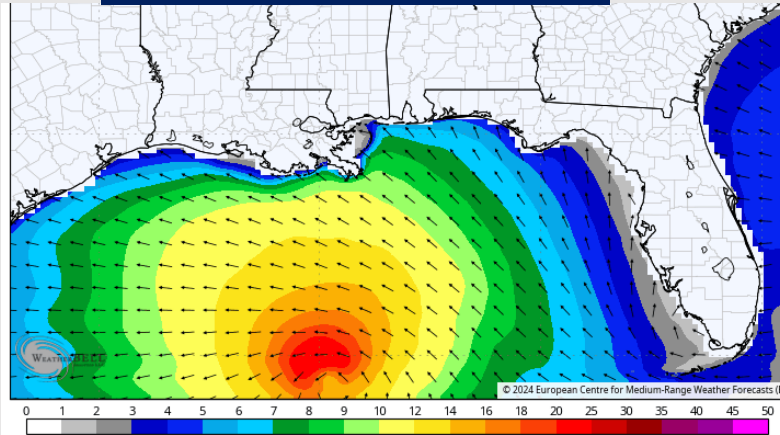
**Current Radar: 11:55 PM CT**



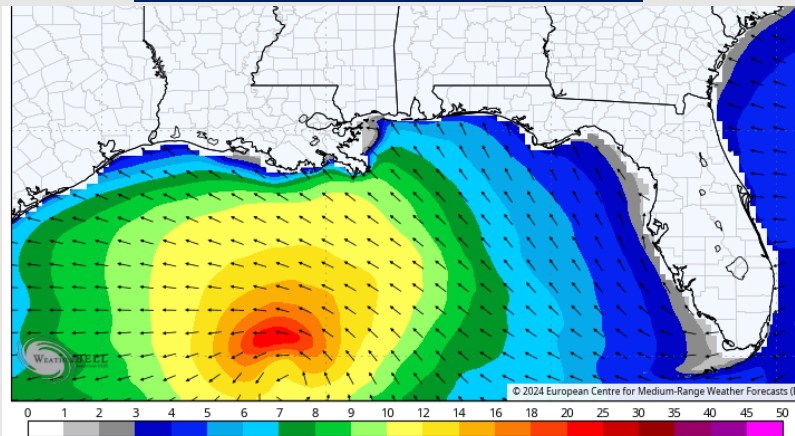
As always, please do not hesitate to reach out to us with any forecast questions via the chat option on Clarity or our on-call number, **(317)-560-8122** press 1 for forecast questions.

# Wave Height Forecast Update

6 PM CT FRI



6 AM CT SAT



Wave heights will increase throughout the morning FRI at the Boarding Station reaching 4'-5' by 5PM Friday

Data has backed off wave heights as we currently favor waves to NOT reach the 6' threshold for the boarding station.

Wave heights will begin to decrease from 4'-5' shortly after 12AM on SUN.

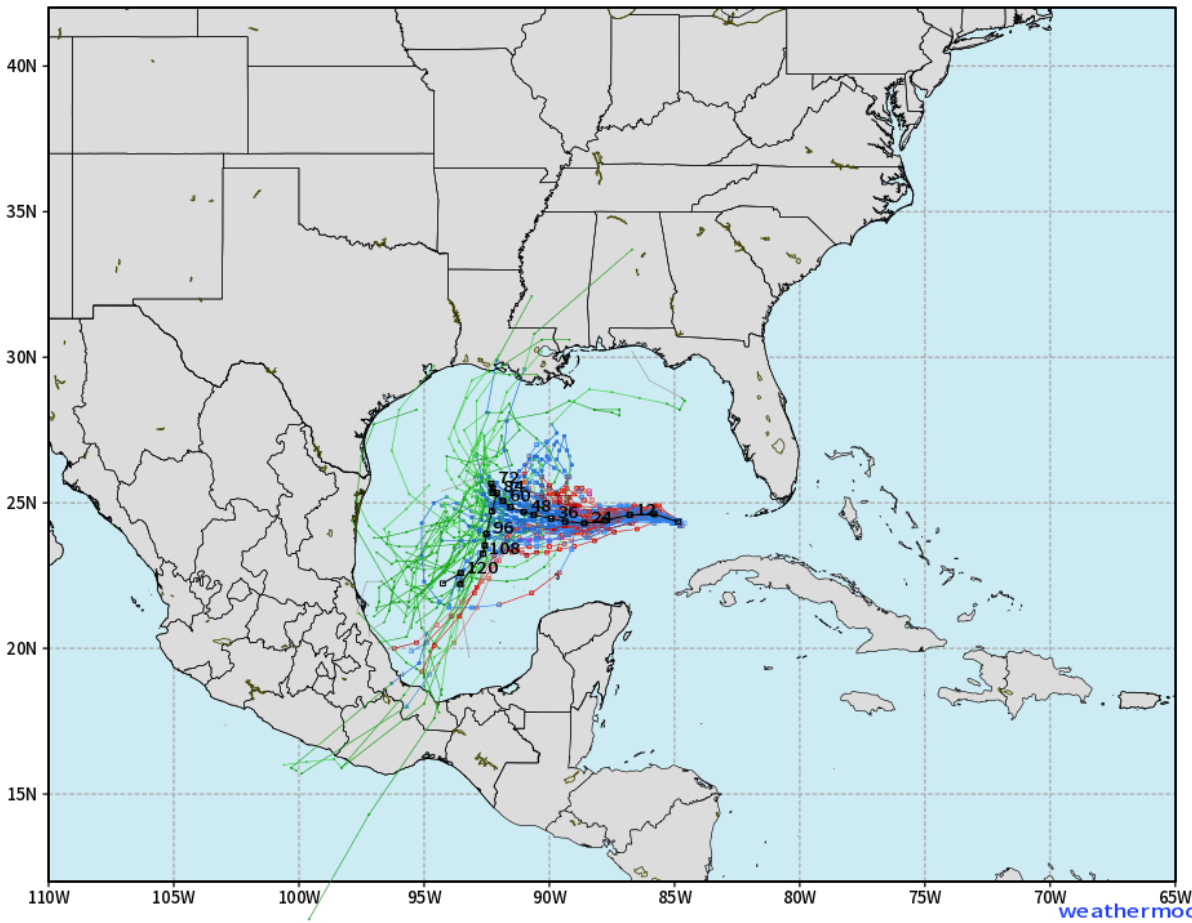
# Houston Pilots Tropical Update



## European Tropical Storm/Hurricane Tracks - Rafael

ECMWF RAFAEL EPS Cyclone Locations --> Next [10-days]  
 INIT: 12Z07NOV2024 --> UNTIL 12Z17NOV2024

o-o ENSEMBLE MEAN  
 o-o 1000 - 1010 hPa  
 o-o 980 - 999 hPa  
 o-o 960 - 979 hPa  
 o-o 950 - 959 hPa  
 o-o < 950 hPa



- 01 168 977
- 02 132 973
- 03 120 956
- 04 120 963
- 05 90 977
- 06 126 979
- 07 156 951
- 08 162 960
- 09 150 971
- 10 108 966
- 11 138 976
- 12 126 985
- 13 132 979
- 14 156 967
- 15 144 973
- 16 114 983
- 17 120 978
- 18 162 967
- 19 120 975
- 20 126 965
- 21 156 979
- 22 96 981
- 23 132 943
- 24 138 969
- 25 138 974
- 26 114 954
- 27 114 980
- 28 216 948
- 29 84 972
- 30 126 977
- 31 72 985
- 32 138 979
- 33 84 983
- 34 132 961
- 35 120 975
- 36 132 978
- 37 156 981
- 38 132 978
- 39 132 979
- 40 126 987
- 41 144 976
- 42 126 956
- 43 78 982
- 44 90 980
- 45 192 950
- 46 132 984
- 47 132 982
- 48 162 972
- 49 114 985
- 50 138 984
- CN 138 980
- HR 156 980
- M 126 979

Hurricane Rafael continues to push WNW further into the Gulf of Mexico.

As Rafael moves further into the Gulf of Mexico, we are expecting Rafael to weaken back into a Tropical storm before turning southwestward towards Mexico.

Confidence remains low on exact track / landfall, with data remaining split on a northward / southward track.

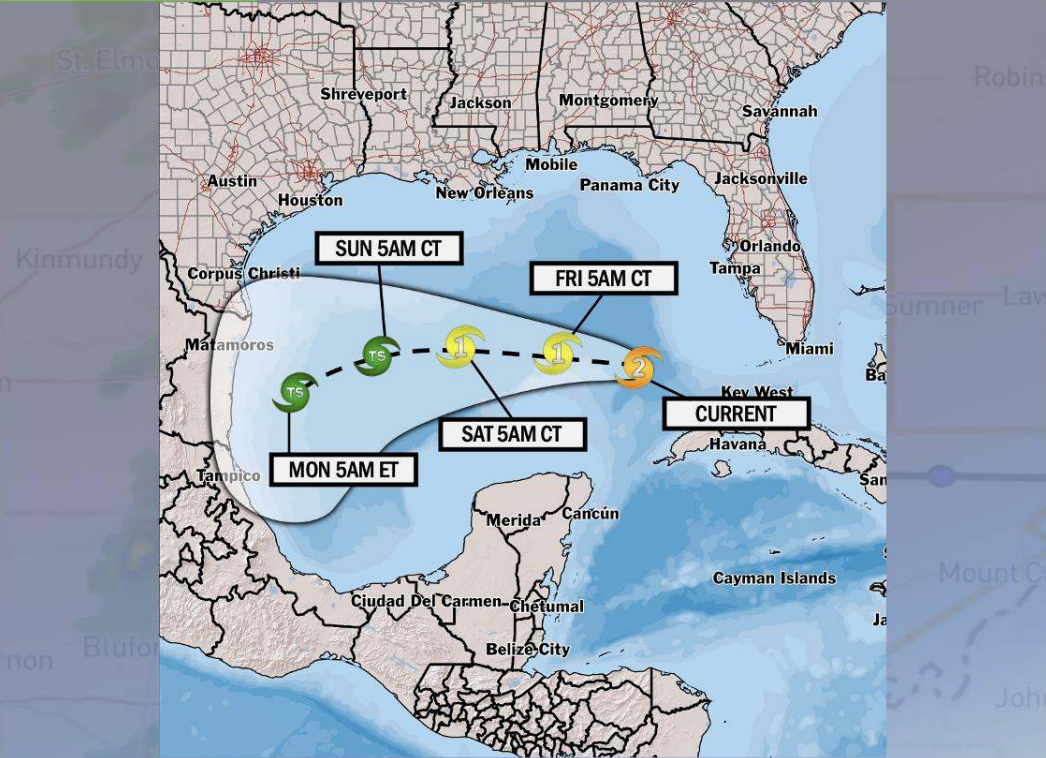
Our latest track (next slide) is leaning more towards a southerly solution.

# Houston Pilots Tropical Update




## Hurricane Rafael Update

**TROPICAL INSIGHT** 12:00 AM CT Friday, November 8, 2024 Forecaster: Elliott



**TIMING: THU 11/7 – MON 11/11**

- FORECAST NOTES:**
- ✓ Rafael is favored to continue as a hurricane through the Gulf, weakening into a tropical storm SAT PM into SUN AM.
  - ✓ While confidence remains low on the exact track of this storm, at this time far S. TX and Mexico are the areas to watch for the risk of direct impacts.
- 

# Houston Pilots Extended Range Visibility Report



## Monday 11/11/24

Fog not favored for MON.

### Forecast Confidence



## Wednesday 11/13/24

Fog not favored for WED.

### Forecast Confidence



## Tuesday 11/12/24

Fog not favored for TUE.

### Forecast Confidence



## Chance for Fog

Monday AM	Unlikely
Monday PM	Unlikely
Tuesday AM	Unlikely
Tuesday PM	Unlikely
Wednesday AM	Unlikely
Wednesday PM	Unlikely

# Houston Pilots Visibility Chart (miles)



## Forecast Confidence



Visibility	Fri 1 am	Fri 2 am	Fri 3 am	Fri 4 am	Fri 5 am	Fri 6 am	Fri 7 am	Fri 8 am	Fri 9 am	Fri 10 am	Fri 11 am	Fri 12 pm	Fri 1 pm	Fri 2 pm	Fri 3 pm	Fri 4 pm	Fri 5 pm	Fri 6 pm	Fri 7 pm	Fri 8 pm	Fri 9 pm	Fri 10 pm	Fri 11 pm	Sat 12 am
Houston Pilots N - 610 Bridge	10	10	10	8	6.9	6.9	6.9	6.9	6.9	10	10	10	10	10	10	10	10	10	10	10	9	6.9	6.9	6.9
Houston Pilots M - Kinder 1	10	10	10	8	8	8	6.9	6.9	6.9	10	10	10	10	10	10	10	10	10	10	10	10	8	6.9	6.9
Houston Pilots L - Greens Bayou	10	10	10	9	8	8	8	6.9	6.9	10	10	10	10	10	10	10	10	10	10	10	10	8	6.9	6.9
Houston Pilots K - Shell Crude	10	10	10	9	8	8	8	6.9	6.9	10	10	10	10	10	10	10	10	10	10	10	10	8	6.9	6.9
Houston Pilots J - Lynchburg Ferries	10	10	10	9	8	8	8	6.9	6.9	10	10	10	10	10	10	10	10	10	10	10	10	8	6.9	6.9
Houston Pilots I - Exxon 3	10	10	10	9	8	8	8	6.9	6.9	10	10	10	10	10	10	10	10	10	10	10	10	8	6.9	6.9
Houston Pilots H - Morgans Point	10	10	10	9	8	8	9	6.9	6.9	10	10	10	10	10	10	10	10	10	10	10	10	8	6.9	6.9
Houston Pilots G - 75/76	10	10	10	10	10	10	10	9	8	10	10	10	10	10	10	10	10	10	10	10	9	8	8	8
Houston Pilots F - 63/64	10	10	10	10	10	10	10	9	8	10	10	10	10	10	10	10	10	10	10	10	9	8	8	8
Houston Pilots E - 51/52	10	10	10	10	10	10	10	10	8	10	10	10	10	10	10	10	10	10	10	10	9	8	8	8
Houston Pilots D - 37/38	10	10	10	10	10	10	10	10	8	10	10	10	10	10	10	10	10	10	10	10	9	8	8	8
Houston Pilots C - 25/26	10	10	10	10	10	10	10	10	8	9	10	10	10	10	10	10	10	10	10	10	9	8	8	8
Houston Pilots B - 11/12	10	10	10	10	10	10	10	10	8	9	10	10	10	10	9	9	10	10	10	10	9	8	8	8
Houston Pilots A - 1 & 2 Bravo	10	10	10	10	10	10	10	10	8	7.9	9	9	10	8	8	9	9	9	10	9	8	8	8	8

**NOTE: This is automated data that may/may not agree with the official BAM thinking that's found on the daily slides or special visibility report slides. This data should be used as a guide only**

# Houston Pilots Wind Chart



## Forecast Confidence



Sustained wind 10 Knots  
 Gusts 15 Knots  
 Wind from the SE

## Example



Wind	Fri 1 am	Fri 2 am	Fri 3 am	Fri 4 am	Fri 5 am	Fri 6 am	Fri 7 am	Fri 8 am	Fri 9 am	Fri 10 am	Fri 11 am	Fri 12 pm	Fri 1 pm	Fri 2 pm	Fri 3 pm	Fri 4 pm	Fri 5 pm	Fri 6 pm	Fri 7 pm	Fri 8 pm	Fri 9 pm	Fri 10 pm	Fri 11 pm	Sat 12 am	
Houston Pilots N - 610 Bridge	6 14 ←	6 14 ←	7 15 ←	7 15 ←	7 15 ←	8 15 ←	8 15 ←	8 16 ←	9 16 ←	9 17 ←	10 18 ←	10 20 ←	10 22 ←	10 22 ←	10 21 ←	10 21 ←	9 18 ←	8 17 ←	7 15 ←	6 14 ←	6 13 ←	6 12 ←	6 12 ←	5 12 ←	
Houston Pilots M - Kinder 1	6 14 ←	6 14 ←	7 15 ←	7 15 ←	8 15 ←	8 15 ←	8 15 ←	8 16 ←	9 17 ←	9 17 ←	10 18 ←	10 20 ←	10 22 ←	10 22 ←	10 21 ←	10 21 ←	9 18 ←	8 17 ←	7 15 ←	6 14 ←	6 13 ←	6 12 ←	6 12 ←	5 12 ←	
Houston Pilots L - Greens Bayou	6 14 ←	6 14 ←	7 15 ←	7 15 ←	7 15 ←	8 15 ←	8 15 ←	8 16 ←	8 17 ←	9 17 ←	10 18 ←	10 20 ←	10 22 ←	10 22 ←	10 21 ←	10 21 ←	9 18 ←	8 16 ←	7 15 ←	6 14 ←	6 13 ←	6 12 ←	6 12 ←	5 12 ←	
Houston Pilots K - Shell Crude	6 14 ←	6 14 ←	7 15 ←	7 15 ←	8 15 ←	8 15 ←	8 15 ←	8 17 ←	9 17 ←	9 17 ←	10 18 ←	10 20 ←	10 22 ←	10 22 ←	10 21 ←	10 21 ←	9 18 ←	8 16 ←	7 15 ←	6 14 ←	6 13 ←	6 12 ←	6 12 ←	6 12 ←	
Houston Pilots J - Lynchburg Ferries	6 13 ←	6 14 ←	6 15 ←	7 15 ←	7 15 ←	7 15 ←	7 15 ←	8 16 ←	8 17 ←	9 17 ←	10 18 ←	10 20 ←	10 21 ←	10 22 ←	10 21 ←	10 20 ←	9 17 ←	8 16 ←	6 14 ←	6 13 ←	6 12 ←	5 12 ←	5 12 ←	5 10 ←	
Houston Pilots I - Exxon 3	10 15 ←	10 15 ←	12 16 ←	12 17 ←	13 17 ←	13 17 ←	12 17 ←	13 18 ←	13 18 ←	13 18 ←	13 20 ←	13 20 ←	13 22 ←	13 22 ←	13 21 ←	13 21 ←	13 18 ←	10 17 ←	10 15 ←	10 15 ←	9 15 ←	9 15 ←	8 14 ←	8 14 ←	8 14 ←
Houston Pilots H - Morgans Point	10 15 ←	10 15 ←	12 16 ←	12 17 ←	13 17 ←	13 17 ←	12 17 ←	13 18 ←	13 18 ←	13 18 ←	13 20 ←	13 20 ←	13 22 ←	13 22 ←	13 21 ←	13 21 ←	13 18 ←	10 17 ←	10 15 ←	10 15 ←	9 15 ←	9 15 ←	9 14 ←	8 14 ←	8 14 ←
Houston Pilots G - 75/76	12 16 ←	13 17 ←	13 18 ←	14 20 ←	14 21 ←	15 21 ←	15 21 ←	15 21 ←	14 21 ←	14 21 ←	14 21 ←	13 21 ←	14 22 ←	14 22 ←	14 22 ←	14 22 ←	13 21 ←	13 18 ←	10 16 ←	10 16 ←	10 15 ←	10 15 ←	10 15 ←	10 15 ←	10 15 ←
Houston Pilots F - 63/64	12 16 ←	13 17 ←	13 18 ←	14 20 ←	15 21 ←	15 21 ←	15 21 ←	15 22 ←	15 22 ←	14 21 ←	14 21 ←	13 22 ←	14 22 ←	14 22 ←	14 22 ←	14 22 ←	13 21 ←	13 20 ←	10 16 ←	10 16 ←	10 15 ←	10 15 ←	10 15 ←	10 15 ←	10 15 ←
Houston Pilots E - 51/52	10 16 ←	13 17 ←	13 18 ←	14 20 ←	14 21 ←	15 21 ←	15 22 ←	15 22 ←	15 22 ←	15 22 ←	14 22 ←	14 22 ←	14 23 ←	14 22 ←	14 22 ←	14 22 ←	14 21 ←	13 20 ←	13 17 ←	12 16 ←	10 16 ←	10 16 ←	10 16 ←	10 16 ←	10 16 ←
Houston Pilots D - 37/38	10 16 ←	12 17 ←	13 18 ←	14 20 ←	14 21 ←	15 21 ←	15 22 ←	15 22 ←	15 22 ←	15 22 ←	14 22 ←	14 22 ←	14 22 ←	14 22 ←	14 22 ←	14 22 ←	14 21 ←	13 20 ←	13 17 ←	12 16 ←	10 16 ←	10 16 ←	10 16 ←	10 16 ←	10 16 ←
Houston Pilots C - 25/26	10 16 ←	12 17 ←	13 18 ←	13 20 ←	14 21 ←	14 22 ←	14 22 ←	15 22 ←	15 22 ←	15 22 ←	14 22 ←	14 22 ←	14 22 ←	14 22 ←	14 22 ←	14 22 ←	14 21 ←	13 20 ←	13 17 ←	12 16 ←	10 16 ←	10 16 ←	10 16 ←	10 16 ←	10 16 ←
Houston Pilots B - 11/12	9 16 ←	10 17 ←	10 18 ←	12 20 ←	13 21 ←	13 21 ←	13 22 ←	14 22 ←	14 22 ←	14 22 ←	14 22 ←	14 22 ←	14 22 ←	14 22 ←	14 21 ←	14 21 ←	13 20 ←	13 20 ←	12 17 ←	10 16 ←	10 16 ←	10 16 ←	10 16 ←	10 16 ←	10 16 ←
Houston Pilots A - 1 & 2 Bravo	13 17 ←	13 20 ←	14 21 ←	15 22 ←	15 23 ←	16 24 ←	16 24 ←	16 24 ←	16 24 ←	16 23 ←	15 24 ←	15 23 ←	15 23 ←	15 23 ←	15 23 ←	15 23 ←	15 22 ←	14 22 ←	14 21 ←	13 21 ←	13 21 ←	13 21 ←	13 21 ←	13 20 ←	13 20 ←

NOTE: This is automated data that may/may not agree with the official BAM thinking that's found on the daily slides. This data should be used as a guide only.

# Houston Pilots: FRI. 11/8/2024



## Forecast Discussion

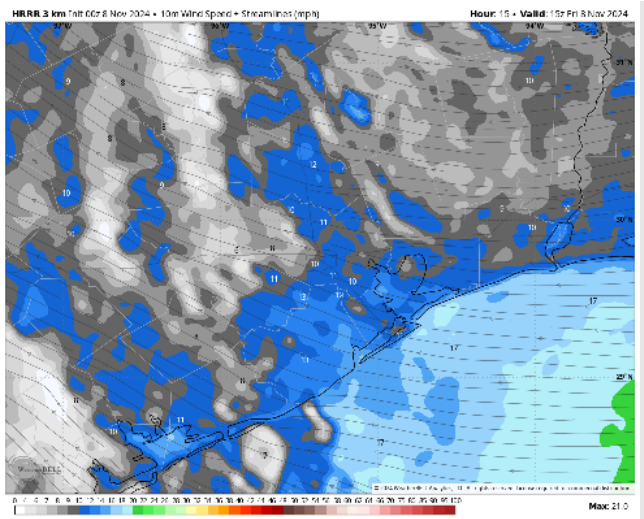
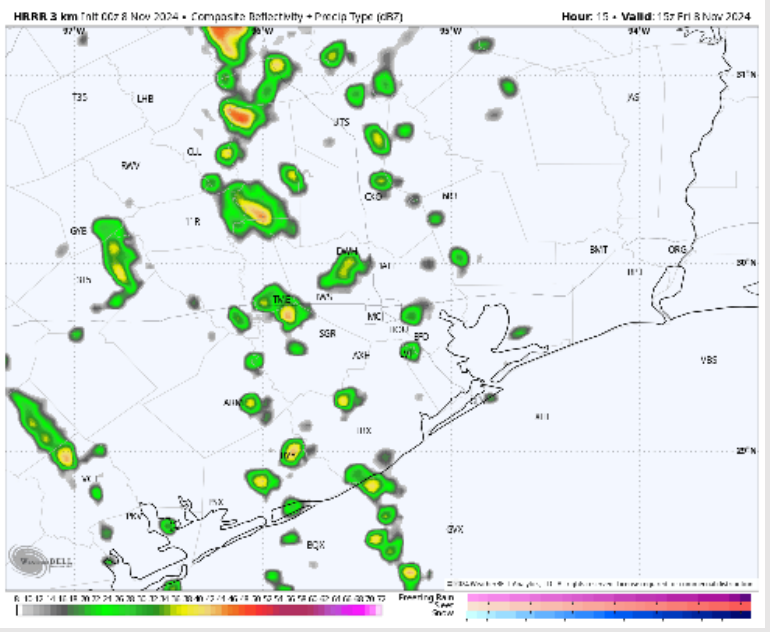
**Precip:** Isolated, light rain showers (20%) will be possible after 12AM through 7PM. Confidence lower on coverage / timing at this time.

**Wind:** Winds will remain out of the ESE for the today. **N of Morgan's Point:** Winds at 6 – 12 kts for the entire day. **S of Morgan's Point:** Winds at 12 – 17 kts through the day. **Wind gusts of 20-25 kts will be possible for all Stations from 7AM – 5PM.**

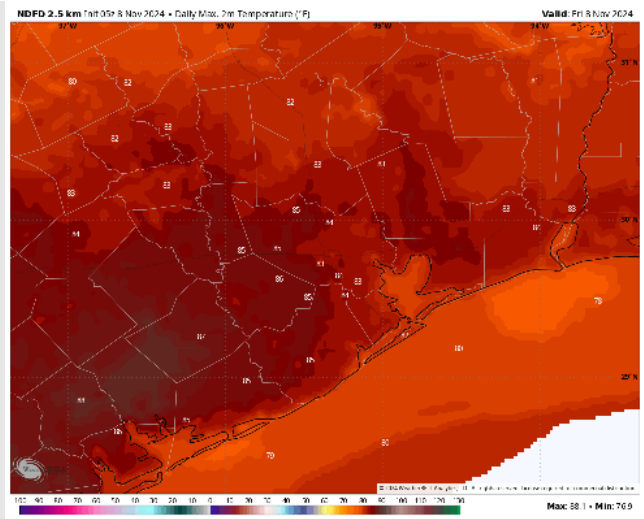
**High Temps:** **N of Morgan's Point:** Lower 80 F. **S of Morgan's Point:** Upper 70 F and lower 80 F

**Visibility:** Not anticipating any fog concerns for today.

## Precip Image: 9 AM CT



Wind Speed:  
9 AM CT



High Temps  
Today



# Houston Pilots: SAT. 11/9/2024



## Forecast Discussion

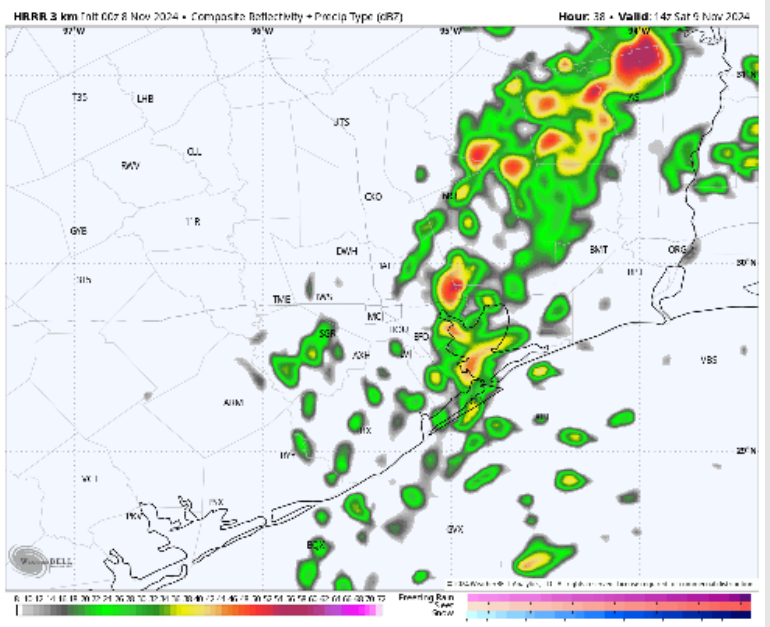
**Precip:** Scattered activity will work in after 12AM and continue through 4AM. After 4AM widespread showers/storms will continue for all stations through 5PM before working out. **Strongest cells will be capable of hail and 35-40kts wind gusts**

**Wind:** Winds will be out of the NE through 5AM, before shifting to be out of the N for the rest of the day. **N of Morgan's Point:** Winds will be at 4 - 9 kts throughout Saturday. **S of Morgan's Point:** Winds will be at 10-15 kts through the day on Saturday.

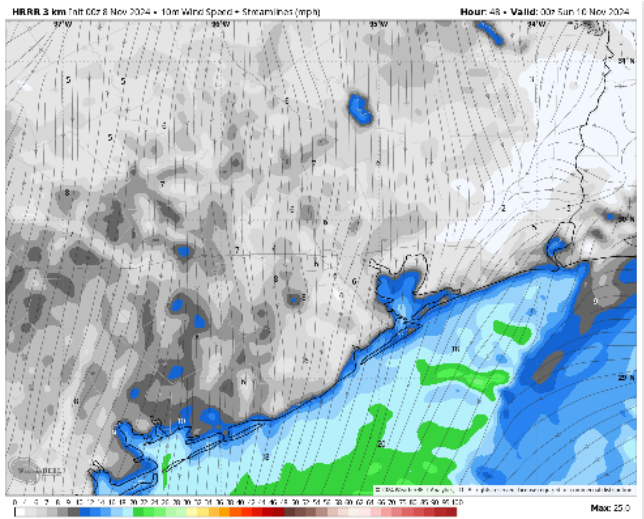
**High Temps:** **N of Morgan's Point:** Upper 70s. **S of Morgan's Point:** Mid to upper 70s F.

**Visibility:** No fog concerns for stations on Saturday, however heavier showers will be capable of reduced visibility

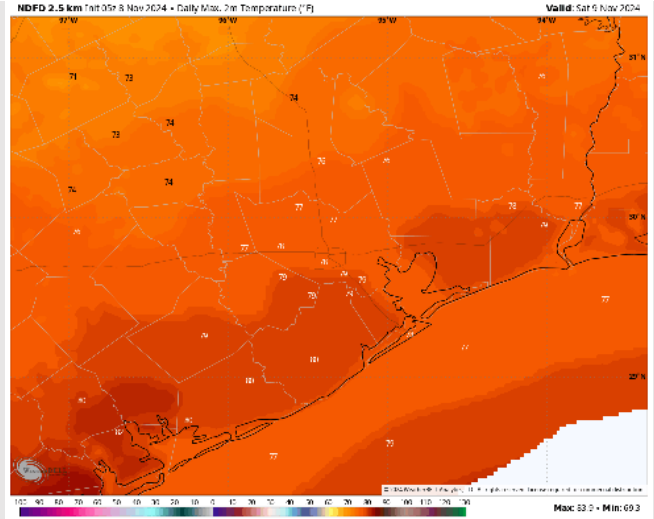
## Precip Image: 8 AM CT



Wind Speed  
6 PM CT



High Temps  
Saturday



# Houston Pilots: SUN. 11/10/2024



## Forecast Discussion

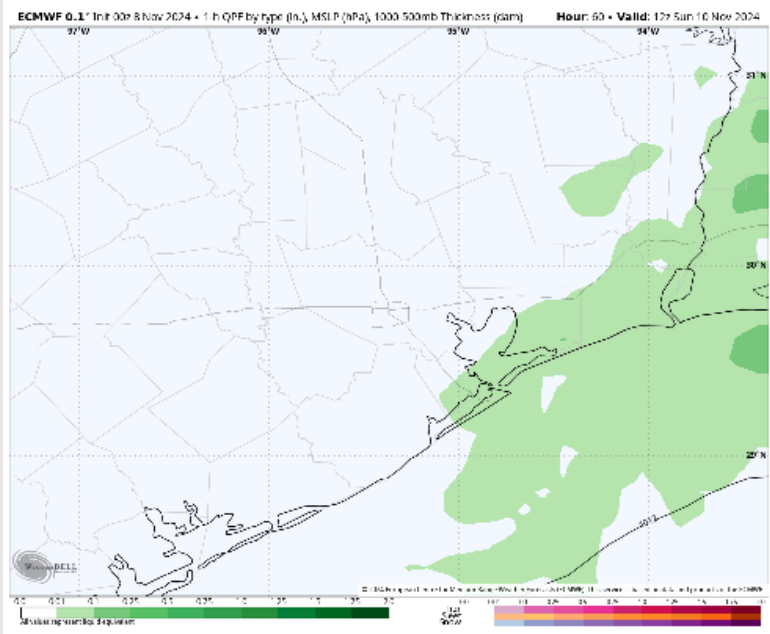
**Precip:** Scattered(20-30%) showers will be possible from 3AM – 9AM Sunday before conditions dry out. Main risk S of Morgan’s Point.

**Wind:** Winds will be out of the NNE through the day. **N of Morgan’s Point:** Winds will be at 3 – 8 kts throughout Sunday. **S of Morgan’s Point:** Winds will be 9 – 14 kts throughout the day.

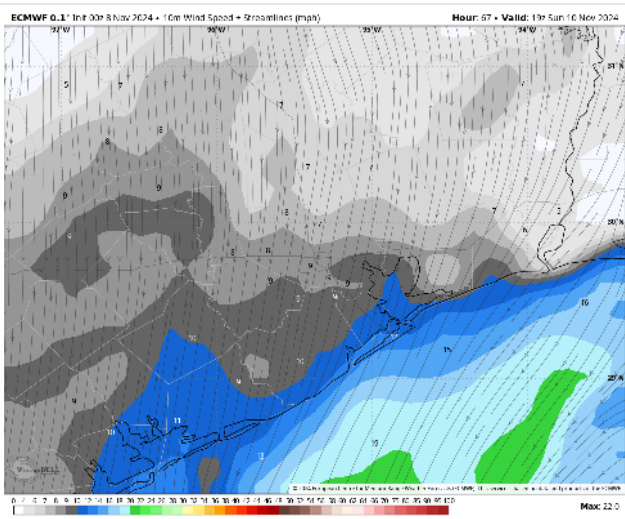
**High Temps:** **N of Morgan’s Point:** Low 80s F. **S of Morgan’s Point:** Upper 70s F.

**Visibility:** Not anticipating any fog concerns for Sunday.

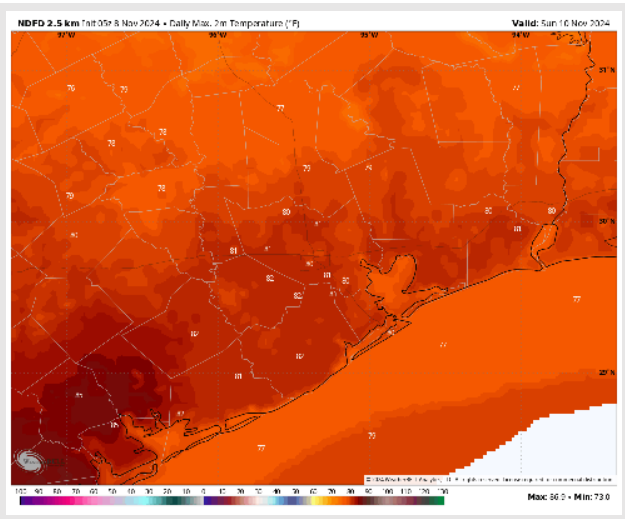
## Precip Image: 6 AM CT



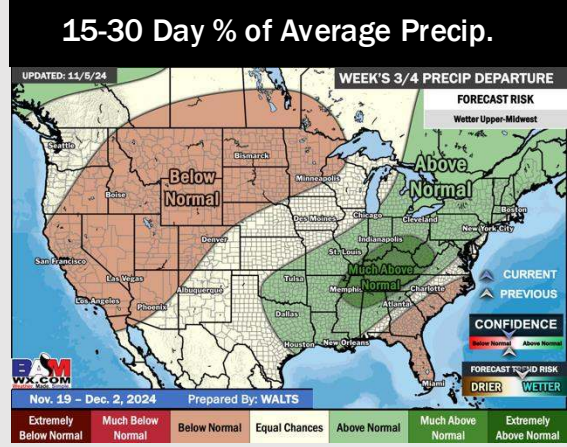
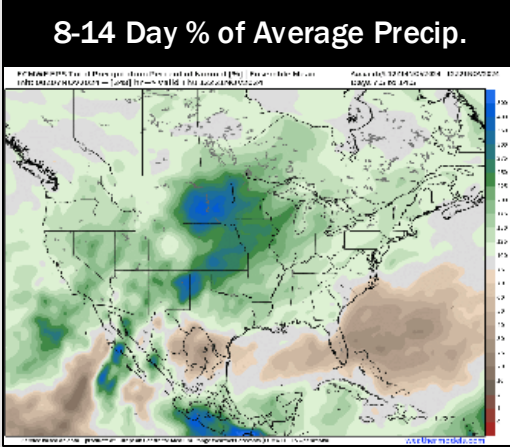
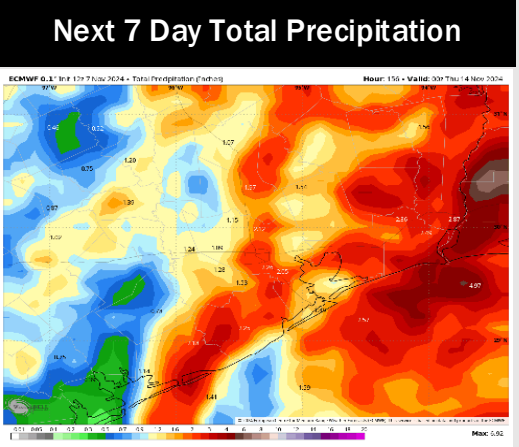
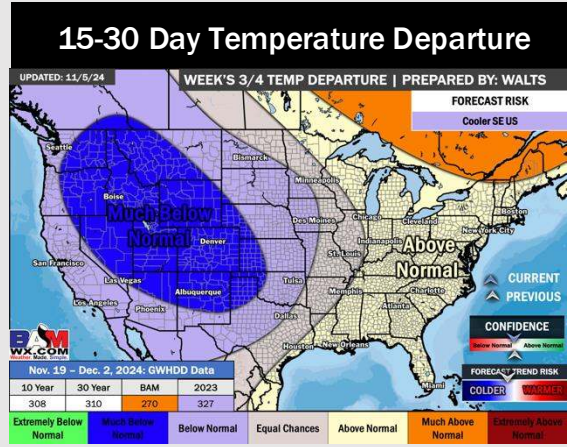
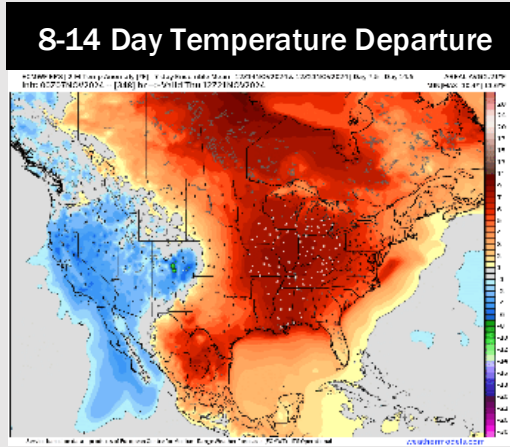
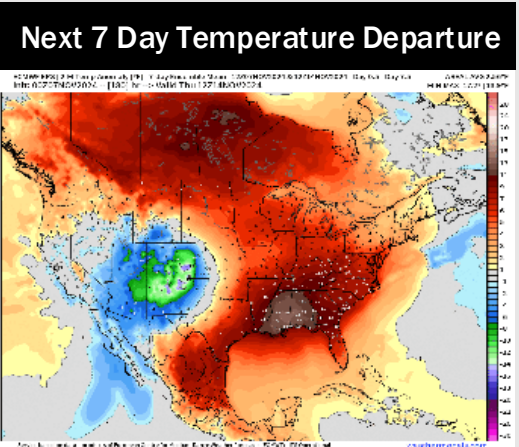
Wind Speed:  
1 PM CT



High Temps  
Sunday



# Houston Pilots: 11/8/24



- Temps are expected to be above normal for the week 1 timeframe. Favoring scattered rain chances to continue for the week 1 period.
- Above normal temperatures are favored for week 2. Favoring precipitation to be right around normal
- Near normal temperatures and above normal precipitation chances are expected for the weeks ¾ timeframe.