

Houston Pilots Forecast Package



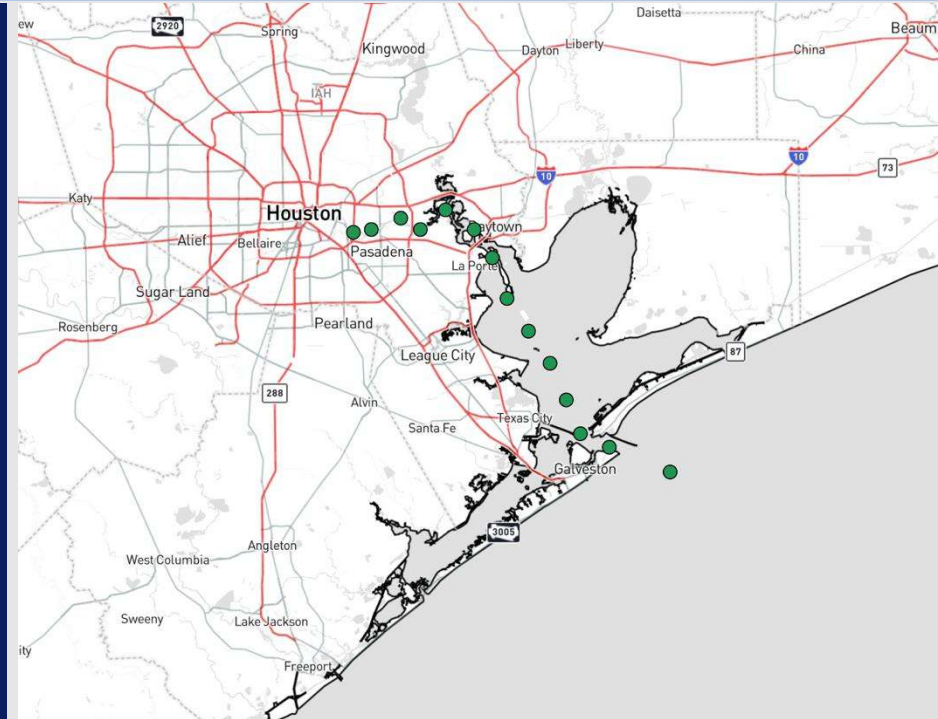
Updated: 10:00 PM CT

Saturday, November 2, 2024

Forecaster: Xander Lowry

Weather Headlines

- **Gusty winds of 15 – 20 kts will be possible SUN and into next week.**
- **Wave heights will begin to increase SUN PM and into MON. Monitoring potential for 6'+ wave heights on MON. X-Ray will likely be triggered come 1 AM SAT.**
- **Monitoring potential for tropical development and low-end impact chances over the next 7-10 Days**
- **Latest Video: [X-Ray Port Condition Update](#)**



Current Radar: 9:20 PM CT



As always, please do not hesitate to reach out to us with any forecast questions via the chat option on Clarity or our on-call number, **(317)-560-8122** press 1 for forecast questions.

Houston Pilots Port Trigger Update

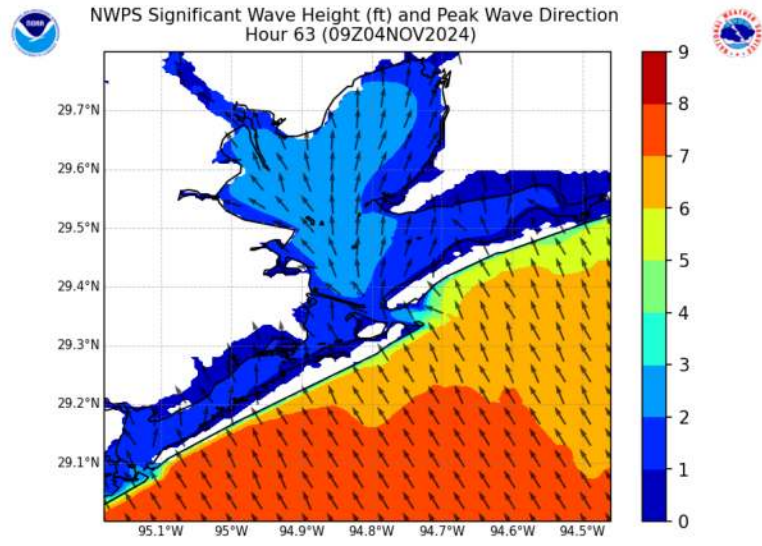


Port Condition	34 KTS+ Sustained Wind Trigger Reached at:	6 Foot Wave Trigger Reached at:	Time Remaining/Trigger Ends At:
Victor	---	---	---
Whiskey	---	---	---
X-Ray	---	1 AM SAT	1 AM SUN
Yankee	---	1 AM SUN	1 PM SUN
Zulu	---	1 PM SUN	4 AM TUE

Port Condition	Trigger Definition	Trigger Reached?
Victor	Hurricane entering/developing in Gulf of Mexico that's a threat to the area	NO
Whiskey	72 hours prior to predicted sustained winds of 34+ KTS	NO
X-Ray	48 hours prior to predicted sustained winds of 34+ KTS or 6' wave height	NO
Yankee	24 hours prior to predicted sustained winds of 34+ KTS or 6' wave height	NO
Zulu	12 hours prior to predicted sustained winds of 34+ KTS or 6' wave height	NO

NOTES: Strong winds will allow for wave heights to increase through the end of the weekend SUN into MON. Wave heights are expected to reach 6' early MON AM and will linger through the day.

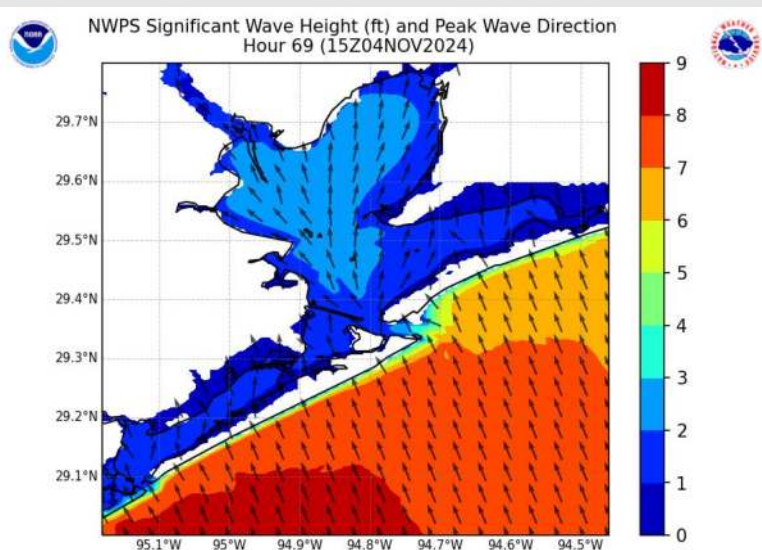
Wave Height Forecast Update



4 AM CT MON

Strong southerly winds SUN PM and into MON AM will bring elevated wave heights near of 5' – 7' come 4AM MON.

Wave heights after 4AM are favored to continue to increase with peak wave heights approaching 6' – 8' by 11AM MON morning. After 11AM MON wave heights will slowly decrease, dipping below 6' by 12AM TUE.



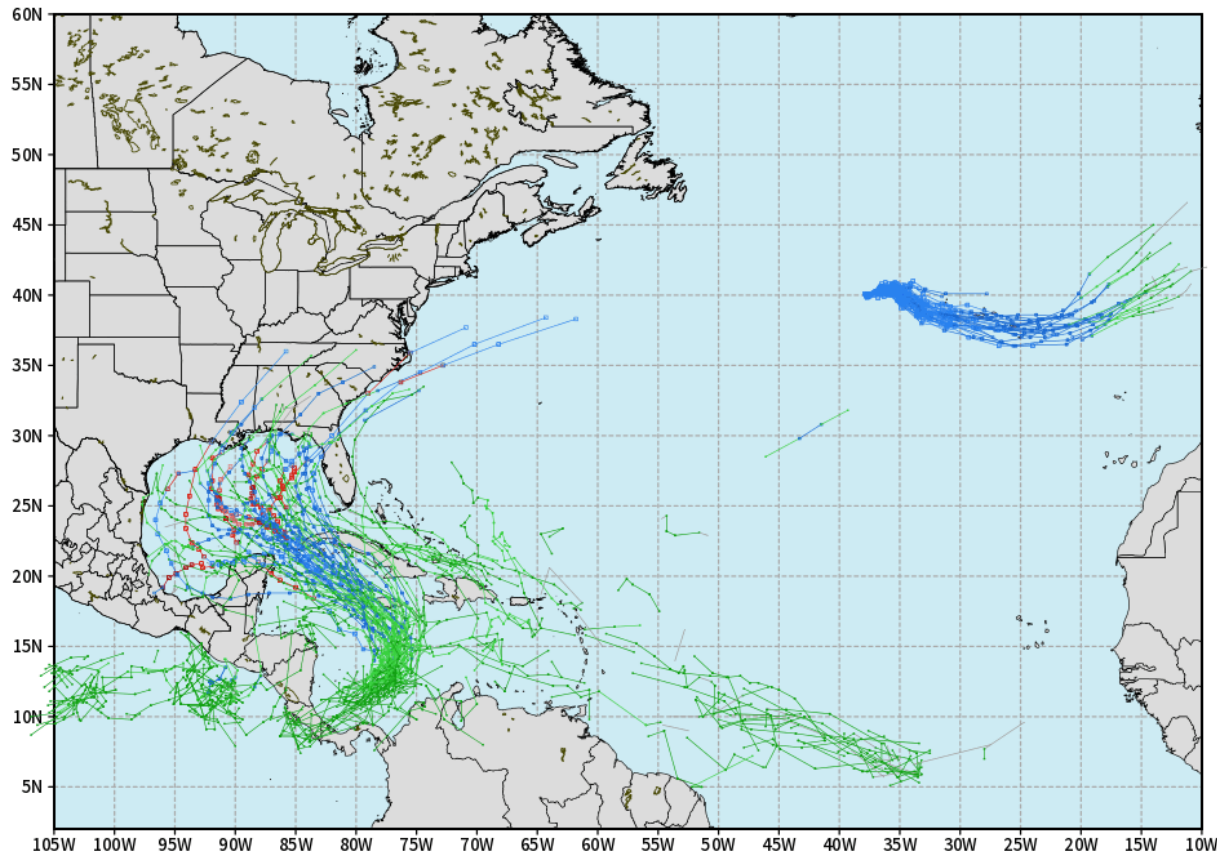
11 AM CT MON

Houston Pilots Tropical Update

European Tropical Tracks - Next 10 Days

ECMWF ATLANTIC EPS Cyclone Locations --> Next [10-days]
INIT: 12Z01NOV2024 --> UNTIL 12Z11NOV2024

o-o ENSEMBLE MEAN
o-o 1000 - 1010 hPa
o-o 980 - 999 hPa
o-o 960 - 979 hPa
o-o 950 - 959 hPa
o-o < 950 hPa



weathermodels.com

We are monitoring increasing potential for tropical formation in the Western Caribbean near the end of this weekend and into early next week.

Confidence remains low in exact track, however potential into the C/W Gulf of Mexico will need to be monitor over the next 7 days.

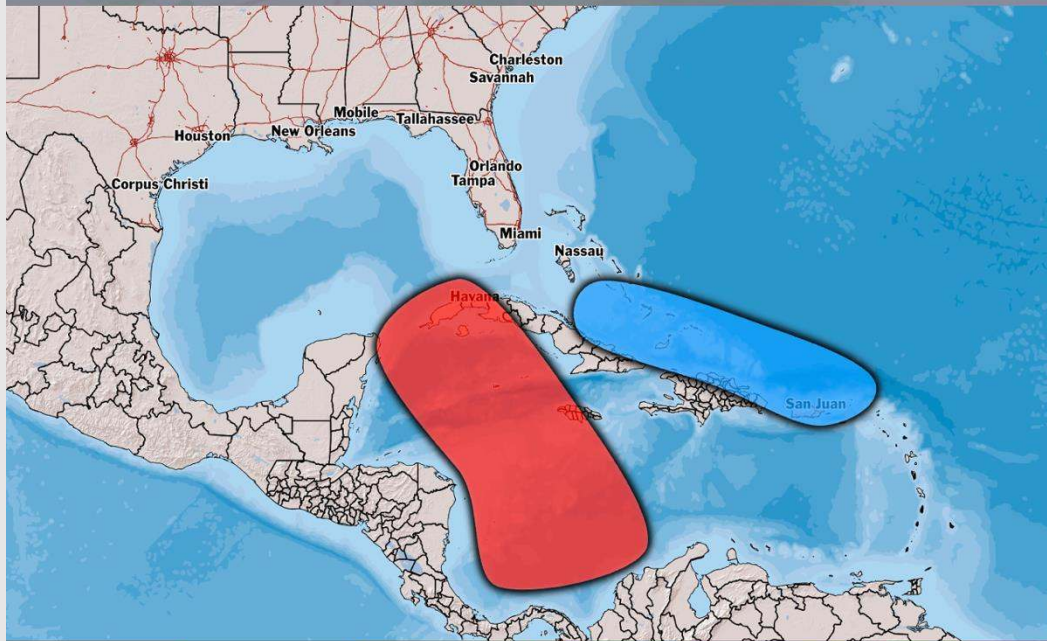
Direct impacts for HOU area over the next 7-10 days cannot be 100% ruled out.

Houston Pilots Tropical Update



 **Potential Tropical Development**

TROPICAL INSIGHT 8:00 PM CT Friday, November 1st, 2024 **Forecaster: Lowry**



Formation Chances	0 - 20%	20%-40%	40%-60%	60%-80%	80% - 100%
-------------------	---------	---------	---------	---------	------------

TIMING: SUN 11/3 – Wed 11/6

FORECAST NOTES:

- ✓ Data shows support of gradual tropical development into this weekend / early next week.
- ✓ Exact details on potential track remain uncertain currently, however a NW/N track into the Gulf of Mexico is favored progression currently.
- ✓ Area in red is of greatest risk. Area in blue at a low-end risk



Houston Pilots Extended Range Visibility Report



Tuesday 11/5/24

Fog not favored for TUE.

Forecast Confidence



Thursday 11/7/24

Fog not favored for THU.

Forecast Confidence



Wednesday 11/6/24

Fog not favored for WED.

Forecast Confidence



Chance for Fog

Tuesday AM	Unlikely
Tuesday PM	Unlikely
Wednesday AM	Unlikely
Wednesday PM	Unlikely
Thursday AM	Unlikely
Thursday PM	Unlikely

Houston Pilots Visibility Chart (miles)



Forecast Confidence



Visibility	Fri 10 pm	Fri 11 pm	Sat 12 am	Sat 1 am	Sat 2 am	Sat 3 am	Sat 4 am	Sat 5 am	Sat 6 am	Sat 7 am	Sat 8 am	Sat 9 am	Sat 10 am	Sat 11 am	Sat 12 pm	Sat 1 pm	Sat 2 pm	Sat 3 pm	Sat 4 pm	Sat 5 pm	Sat 6 pm	Sat 7 pm	Sat 8 pm	Sat 9 pm
Houston Pilots N - 610 Bridge	10	10	10	10	10	10	10	8	9	6.9	10	7.9	10	10	10	10	10	10	10	10	10	10	10	10
Houston Pilots M - Kinder 1	10	10	10	10	10	10	10	8	8	6.9	10	7.9	10	10	10	10	10	10	10	10	10	10	10	10
Houston Pilots L - Greens Bayou	10	10	10	10	10	10	10	6.9	8	6.9	10	7.9	10	10	10	10	10	10	10	10	10	10	10	10
Houston Pilots K - Shell Crude	10	10	10	10	10	10	10	6.9	8	6.9	10	7.9	10	10	10	10	10	10	10	10	10	10	10	10
Houston Pilots J - Lynchburg Ferries	10	10	10	10	10	10	10	6.9	8	6.9	10	7.9	10	10	10	10	10	10	10	10	10	10	10	10
Houston Pilots I - Exxon 3	10	10	10	10	10	10	9	5.9	6.9	9	10	6.9	10	10	10	10	10	10	10	10	10	10	10	10
Houston Pilots H - Morgans Point	10	10	10	10	10	10	9	5.9	9	9	10	7.9	10	10	10	10	10	10	10	10	10	10	10	10
Houston Pilots G - 75/76	10	10	10	10	10	9	9	6.9	9	10	10	9	10	10	10	10	10	10	10	10	10	10	10	9
Houston Pilots F - 63/64	10	10	10	10	10	9	9	8	10	10	10	10	10	10	10	10	10	10	10	10	10	10	10	9
Houston Pilots E - 51/52	10	10	10	10	10	8	9	10	10	10	10	9	10	10	10	10	10	10	10	10	10	10	10	9
Houston Pilots D - 37/38	10	10	10	10	10	8	10	10	10	10	10	9	10	10	10	10	10	10	10	10	10	10	10	9
Houston Pilots C - 25/26	10	10	10	10	10	8	10	10	10	10	10	9	10	10	10	10	10	10	10	10	10	10	10	9
Houston Pilots B - 11/12	10	10	10	10	10	8	10	10	10	10	10	10	10	10	10	10	10	10	10	10	10	10	10	9
Houston Pilots A - 1 & 2 Bravo	10	10	10	10	9	8	10	10	10	10	10	10	10	10	10	10	10	10	10	10	10	10	10	10

NOTE: This is automated data that may/may not agree with the official BAM thinking that's found on the daily slides or special visibility report slides. This data should be used as a guide only

Houston Pilots Wind Chart



Forecast Confidence



Sustained wind 10 Knots
 Gusts 15 Knots
 Wind from the SE

Example



Wind	Fri 10 pm	Fri 11 pm	Sat 12 am	Sat 1 am	Sat 2 am	Sat 3 am	Sat 4 am	Sat 5 am	Sat 6 am	Sat 7 am	Sat 8 am	Sat 9 am	Sat 10 am	Sat 11 am	Sat 12 pm	Sat 1 pm	Sat 2 pm	Sat 3 pm	Sat 4 pm	Sat 5 pm	Sat 6 pm	Sat 7 pm	Sat 8 pm	Sat 9 pm
Houston Pilots N - 610 Bridge	6 14 ←	7 14 ←	7 14 ←	7 14 ←	7 14 ←	7 14 ←	7 14 ←	7 14 ←	7 14 ←	7 14 ←	7 14 ←	8 15 ←	9 16 ←	10 17 ←	10 20 ←	10 22 ←	10 22 ←	13 23 ←	13 23 ←	13 24 ←	13 24 ←	13 23 ←	10 21 ←	10 21 ←
Houston Pilots M - Kinder 1	6 14 ←	7 14 ←	7 14 ←	7 15 ←	7 14 ←	7 14 ←	7 14 ←	7 14 ←	7 14 ←	7 14 ←	7 14 ←	8 15 ←	9 16 ←	10 17 ←	10 20 ←	12 22 ←	12 22 ←	13 23 ←	13 24 ←	13 24 ←	13 24 ←	13 23 ←	10 21 ←	10 21 ←
Houston Pilots L - Greens Bayou	6 14 ←	7 14 ←	7 14 ←	7 15 ←	7 14 ←	7 15 ←	7 14 ←	7 14 ←	7 15 ←	7 14 ←	7 14 ←	8 16 ←	9 17 ←	10 17 ←	10 20 ←	12 21 ←	12 22 ←	13 24 ←	13 24 ←	13 24 ←	13 23 ←	13 23 ←	10 21 ←	10 21 ←
Houston Pilots K - Shell Crude	6 14 ←	7 14 ←	7 14 ←	7 15 ←	7 15 ←	7 15 ←	7 15 ←	7 15 ←	7 15 ←	7 15 ←	7 15 ←	8 16 ←	9 17 ←	10 18 ←	10 20 ←	12 22 ←	12 23 ←	13 24 ←	13 24 ←	13 24 ←	13 23 ←	12 22 ←	10 21 ←	10 21 ←
Houston Pilots J - Lynchburg Ferries	6 13 ←	6 14 ←	6 14 ←	6 14 ←	6 14 ←	6 14 ←	6 14 ←	6 14 ←	6 15 ←	6 15 ←	7 15 ←	8 16 ←	8 17 ←	10 18 ←	10 20 ←	12 21 ←	13 22 ←	13 24 ←	13 24 ←	13 23 ←	13 23 ←	13 23 ←	10 21 ←	10 21 ←
Houston Pilots I - Exxon 3	10 15 ←	10 16 ←	10 16 ←	12 15 ←	12 16 ←	12 17 ←	12 16 ←	12 16 ←	12 17 ←	12 17 ←	12 16 ←	13 18 ←	13 18 ←	13 20 ←	14 21 ←	14 22 ←	15 23 ←	15 23 ←	15 24 ←	15 23 ←	15 23 ←	15 23 ←	15 22 ←	15 22 ←
Houston Pilots H - Morgans Point	10 15 ←	10 16 ←	10 16 ←	10 16 ←	12 17 ←	12 17 ←	12 16 ←	12 16 ←	12 17 ←	12 17 ←	12 17 ←	13 18 ←	13 18 ←	13 20 ←	14 21 ←	14 22 ←	15 23 ←	15 23 ←	15 23 ←	15 23 ←	15 23 ←	15 23 ←	15 22 ←	15 22 ←
Houston Pilots G - 75/76	12 16 ←	13 17 ←	13 17 ←	13 18 ←	13 18 ←	13 18 ←	13 20 ←	13 20 ←	13 18 ←	13 20 ←	13 20 ←	14 21 ←	15 22 ←	15 22 ←	15 23 ←	15 24 ←	15 24 ←	16 25 ←	16 24 ←	16 24 ←	16 24 ←	17 24 ←	16 22 ←	17 24 ←
Houston Pilots F - 63/64	12 16 ←	12 17 ←	13 17 ←	13 18 ←	13 18 ←	13 18 ←	13 20 ←	13 20 ←	14 20 ←	14 20 ←	14 20 ←	15 21 ←	15 22 ←	15 22 ←	15 23 ←	15 24 ←	15 24 ←	16 24 ←	16 24 ←	16 24 ←	17 24 ←	17 24 ←	15 22 ←	16 24 ←
Houston Pilots E - 51/52	12 16 ←	12 17 ←	13 17 ←	13 18 ←	13 18 ←	13 20 ←	13 20 ←	13 20 ←	13 18 ←	13 20 ←	13 20 ←	14 22 ←	15 22 ←	15 22 ←	15 23 ←	15 23 ←	15 23 ←	15 24 ←	15 24 ←	17 24 ←	17 24 ←	16 24 ←	16 22 ←	17 23 ←
Houston Pilots D - 37/38	12 16 ←	12 17 ←	13 17 ←	13 18 ←	13 18 ←	13 20 ←	13 20 ←	13 20 ←	13 18 ←	13 20 ←	13 20 ←	14 22 ←	15 22 ←	15 22 ←	15 23 ←	15 23 ←	15 23 ←	15 23 ←	16 24 ←	16 24 ←	16 24 ←	17 24 ←	16 22 ←	16 23 ←
Houston Pilots C - 25/26	10 16 ←	12 17 ←	12 17 ←	12 17 ←	12 17 ←	13 18 ←	13 18 ←	13 18 ←	13 18 ←	13 20 ←	13 20 ←	14 22 ←	15 22 ←	15 22 ←	15 23 ←	15 24 ←	15 23 ←	15 24 ←	15 24 ←	15 23 ←	15 23 ←	16 23 ←	15 22 ←	15 22 ←
Houston Pilots B - 11/12	10 16 ←	10 17 ←	10 17 ←	10 17 ←	10 17 ←	10 18 ←	10 18 ←	10 18 ←	12 18 ←	13 20 ←	13 20 ←	13 22 ←	14 22 ←	14 22 ←	14 23 ←	15 23 ←	15 23 ←	15 23 ←	15 23 ←	15 23 ←	15 22 ←	15 22 ←	14 22 ←	14 22 ←
Houston Pilots A - 1 & 2 Bravo	13 17 ←	13 18 ←	13 18 ←	13 20 ←	13 20 ←	14 20 ←	14 20 ←	14 20 ←	14 21 ←	15 22 ←	15 22 ←	15 23 ←	16 23 ←	16 23 ←	16 24 ←	16 24 ←	16 24 ←	16 24 ←	16 24 ←	16 24 ←	16 24 ←	16 24 ←	16 23 ←	17 24 ←

NOTE: This is automated data that may/may not agree with the official BAM thinking that's found on the daily slides. This data should be used as a guide only.

Houston Pilots: SAT. 11/2/2024



Forecast Discussion

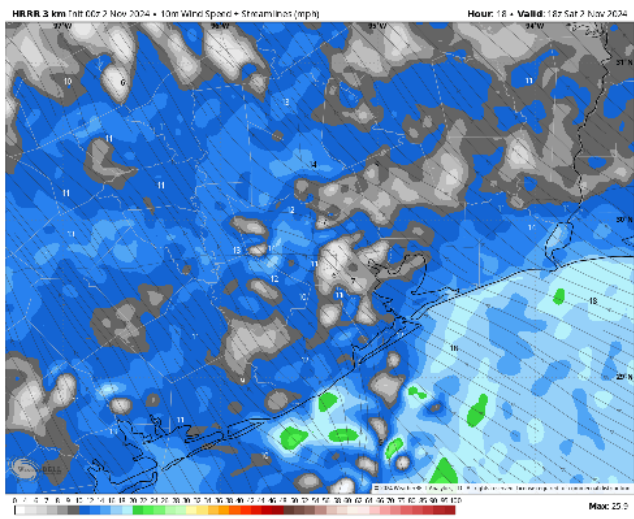
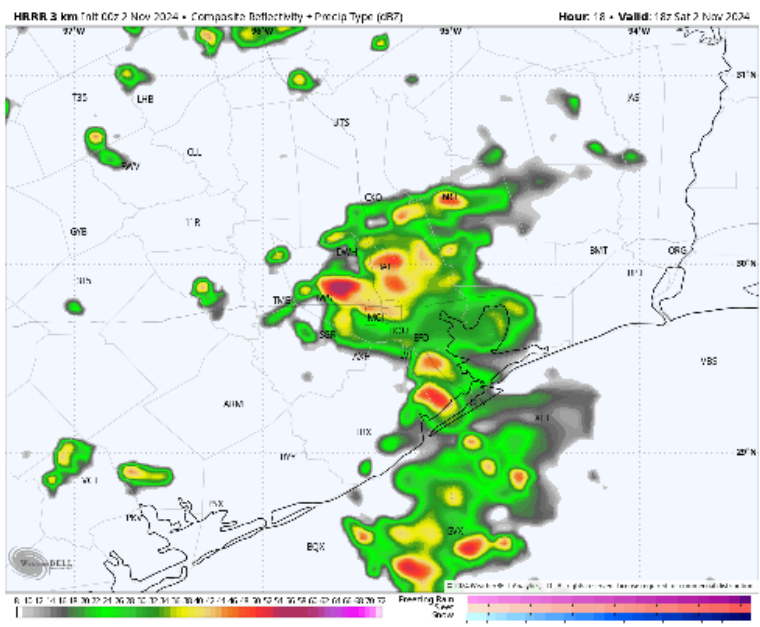
Precip: Favoring multiple rounds of showers and a few storms to be in play for all stations (50-60%) between 3AM and 9PM. Greatest coverage is expected from 10 AM – 7 PM.

Wind: Winds will be out of the SSE throughout the day. **N of Morgan's Point:** Winds will be at 6 – 11 kts for the entire day. **S of Morgan's Point:** Winds will be at 13 - 18 kts throughout the day. **Wind gusts of 20 – 25 MPH are favored for all Stations after 11 AM.**

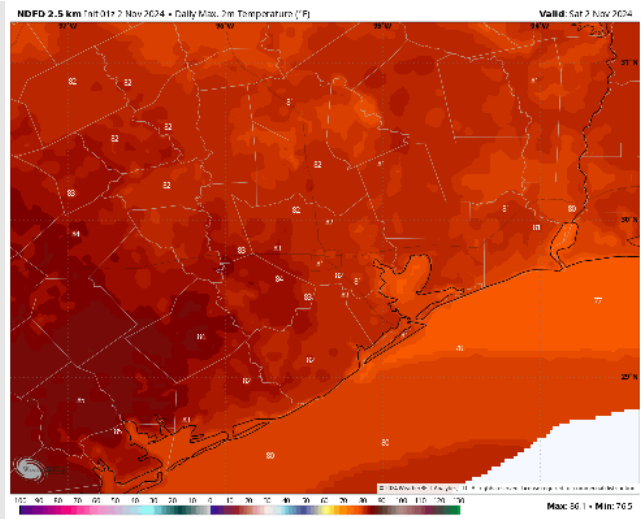
High Temps: **N of Morgan's Point:** Upper 70s F and low 80s F. **S of Morgan's Point:** Upper 70s to lower 80s F.

Visibility: Visibilities may be reduced in heavy downpours. Otherwise, no fog concerns for any Stations.

Precip Image: 1 PM CT



Wind Speed:
1 PM CT



High Temps
Today

Houston Pilots: SUN. 11/3/2024



Forecast Discussion

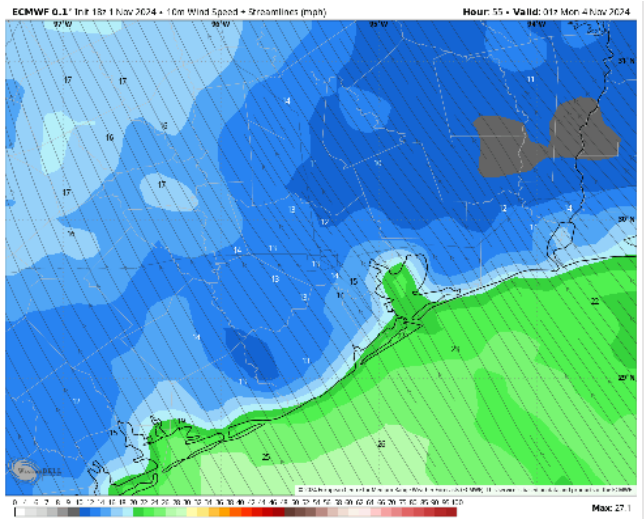
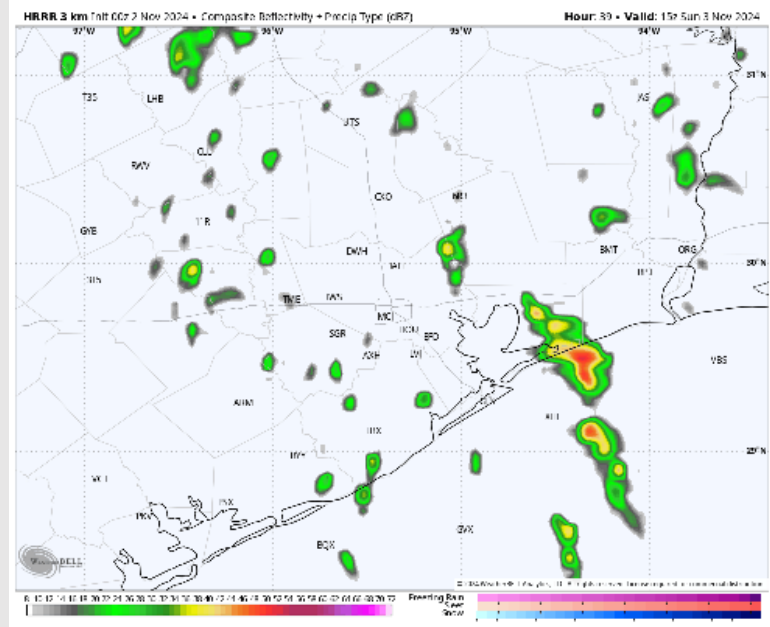
Precip: Scattered showers will work in after midnight and continue throughout the day in a hit/miss (30-40%) fashion.

Wind: Winds will be out of the S/SSW throughout the day on Sunday. **N of Morgan's Point:** Winds will be at 7 – 11 kts through 11AM before increase to 12 – 17 kts for the rest of the day. **S of Morgan's Point:** Winds will be at 15 – 20 kts throughout Sunday. **Wind gusts of 30-35 kts will be in play for all stations throughout the day on Sunday.**

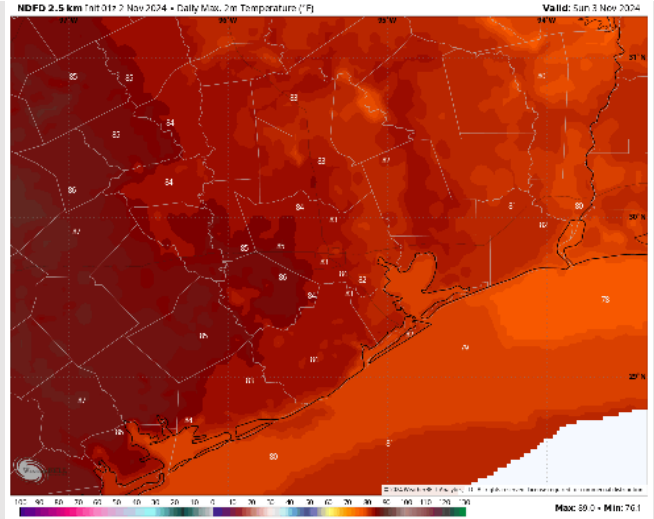
High Temps: **N of Morgan's Point:** Low 80s F. **S of Morgan's Point:** Upper 70s.

Visibility: Visibilities may be reduced in heavy downpours. Otherwise, no fog concerns for any Stations.

Precip Image: 9 AM CT



Wind Speed
7 PM CT



High Temps
Sunday

Forecast Discussion

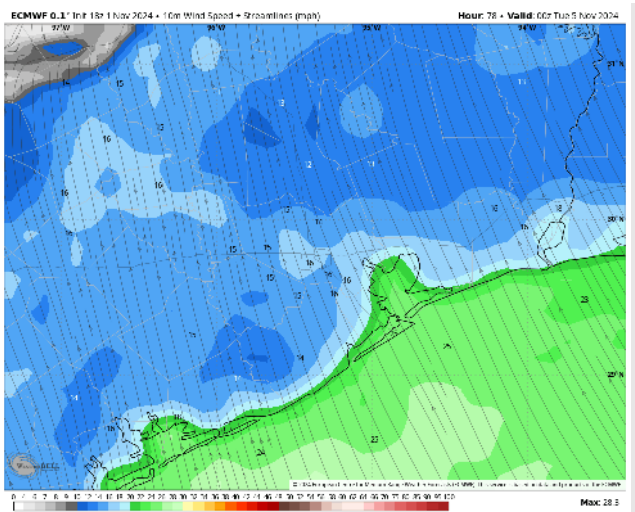
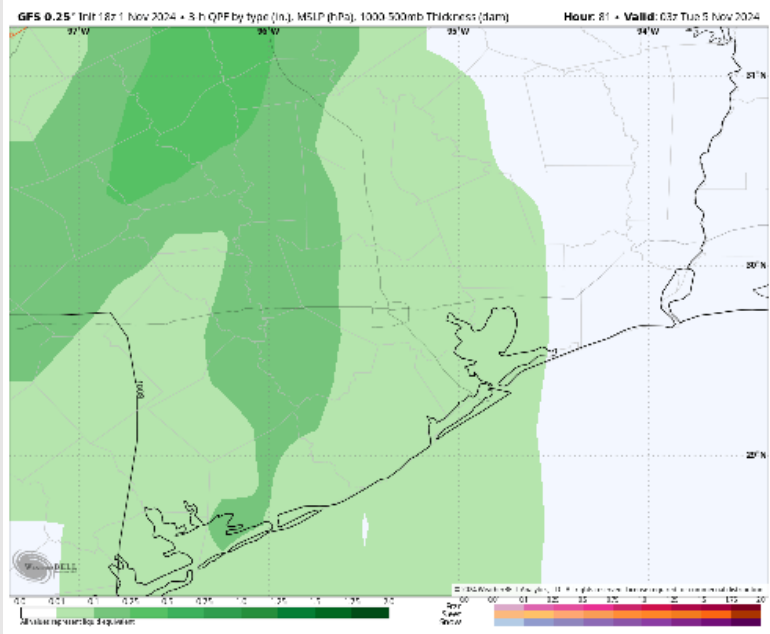
Precip: Scattered (40-50%) showers will be possible through 8PM Monday, before more widespread showers/storms work in after 8PM and continue throughout the rest of the night.

Wind: Winds will be out of the ENE throughout the rest of the day. **N of Morgan's Point:** Winds will be at 14 – 19 kts throughout the day on Monday. **S of Morgan's Point:** Winds will be 18 – 23 kts throughout the day Monday. **Wind gusts of 25 – 35 kts will be possible for all stations.**

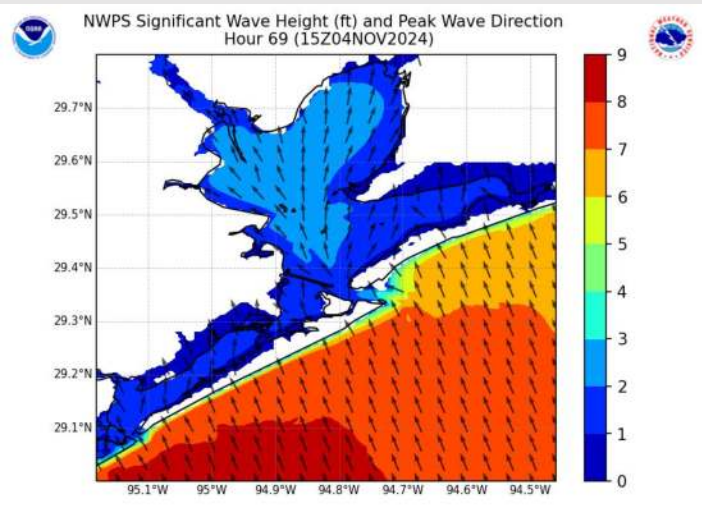
High Temps: **N of Morgan's Point:** Mid 80s F. **S of Morgan's Point:** Upper 70s F.

Visibility: Visibilities may be reduced in heavy downpours. Otherwise, no fog concerns for any Stations.

Precip Image: 9 PM CT



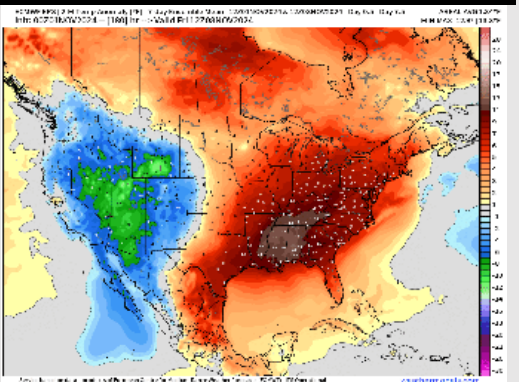
**Wind Speed:
6 PM CT**



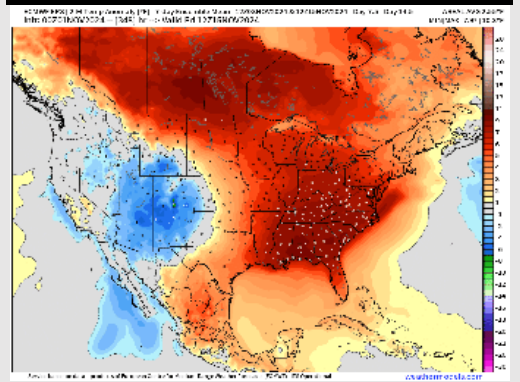
**Wave Heights
11 AM**

Houston Pilots: 11/2/24

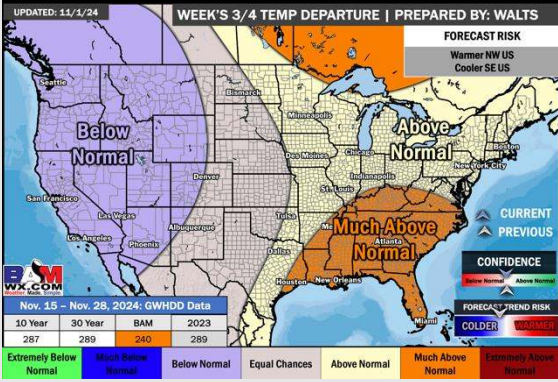
Next 7 Day Temperature Departure



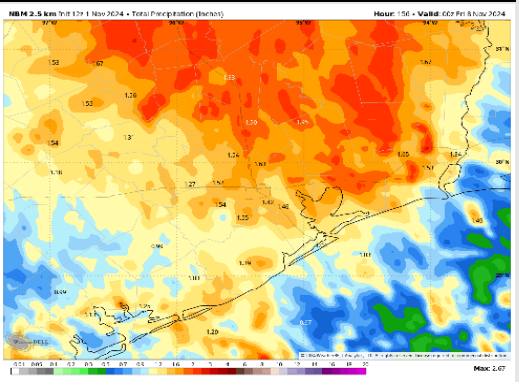
8-14 Day Temperature Departure



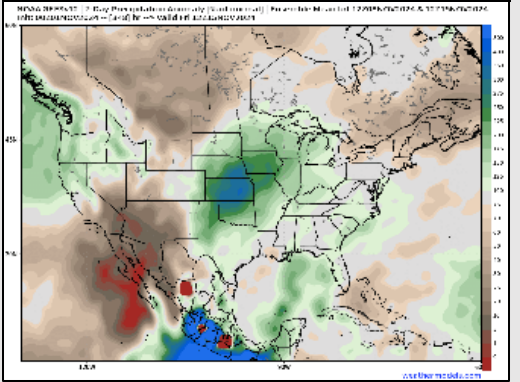
15-30 Day Temperature Departure



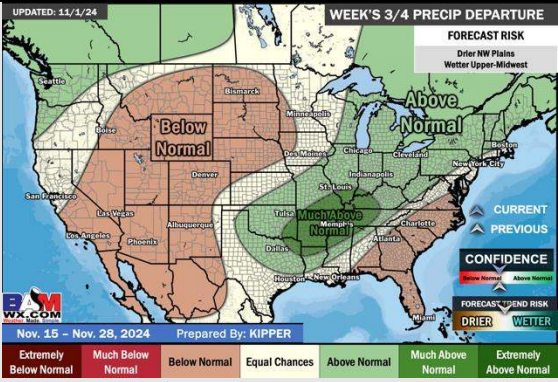
Next 7 Day Total Precipitation



8-14 Day % of Average Precip.



15-30 Day % of Average Precip.



- Temps are expected to be above normal for the week 1 timeframe. Favoring scattered rain chances to continue into the weekend.
- Above normal temperatures are favored for week 2. Favoring precipitation to be right around normal depending on the track of the upcoming tropical system.
- Above normal temperatures and near normal precipitation chances are expected for the weeks ¾ timeframe.