

Houston Pilots Forecast Package



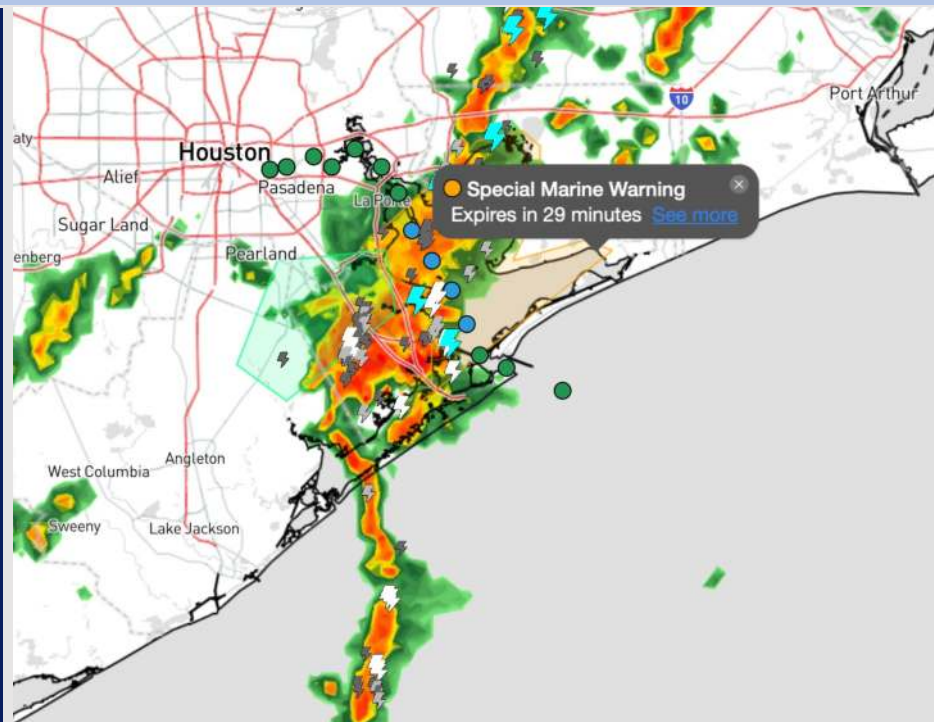
Updated: 12:45 PM CT

Thursday, October 31, 2024

Forecaster: Hope Kleitsch

Weather Headlines

- Wave heights currently at 3 - 4' for Boarding Station will be on the decrease through the rest of the afternoon and into the evening. See wave height slide below!
- Gusty winds of 20-25 kts expected through 4 PM, before decreasing through the night and into Friday.
- No tropical concerns for at least the next 7 days!

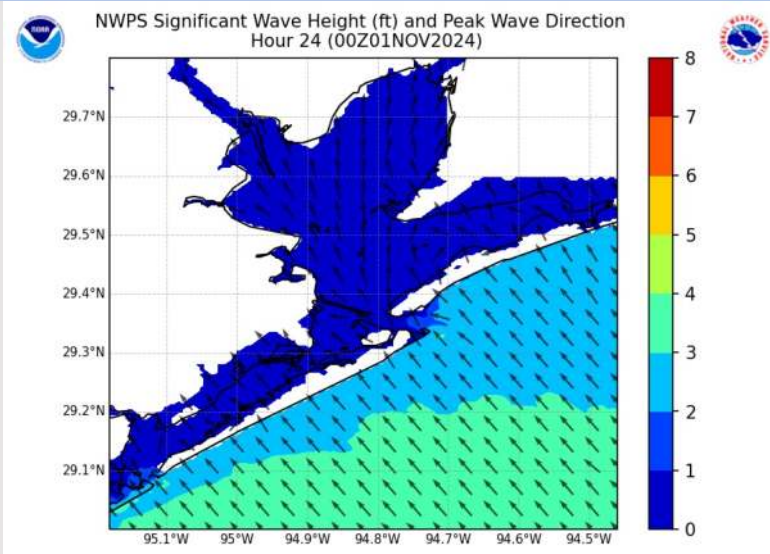


Current Radar: 12:45 PM CT



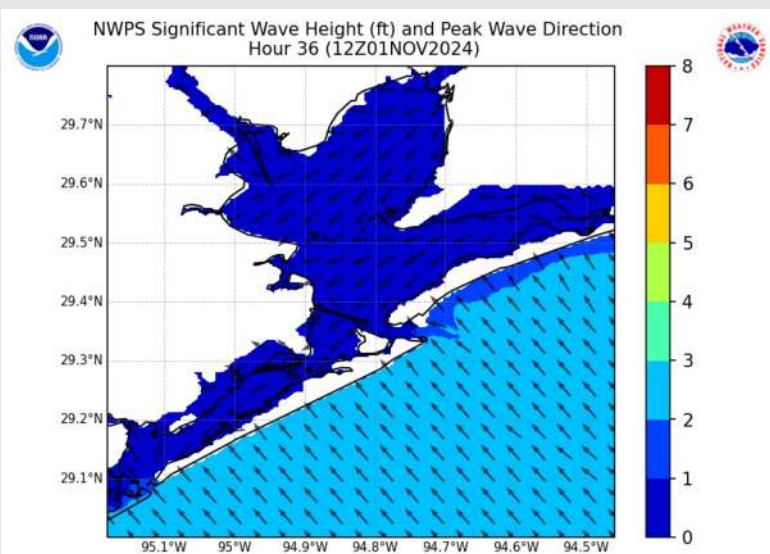
As always, please do not hesitate to reach out to us with any forecast questions via the chat option on Clarity or our on-call number, **(317)-560-8122** press 1 for forecast questions.

Wave Height Forecast Update



7 PM CT THU

Observed wave heights currently sit at 3 – 4' near the Boarding Station. Favoring max wave heights to continue to decrease throughout the rest of the day, dropping to 2-3' at the Boarding Station by 7 PM THU.



7 AM CT FRI

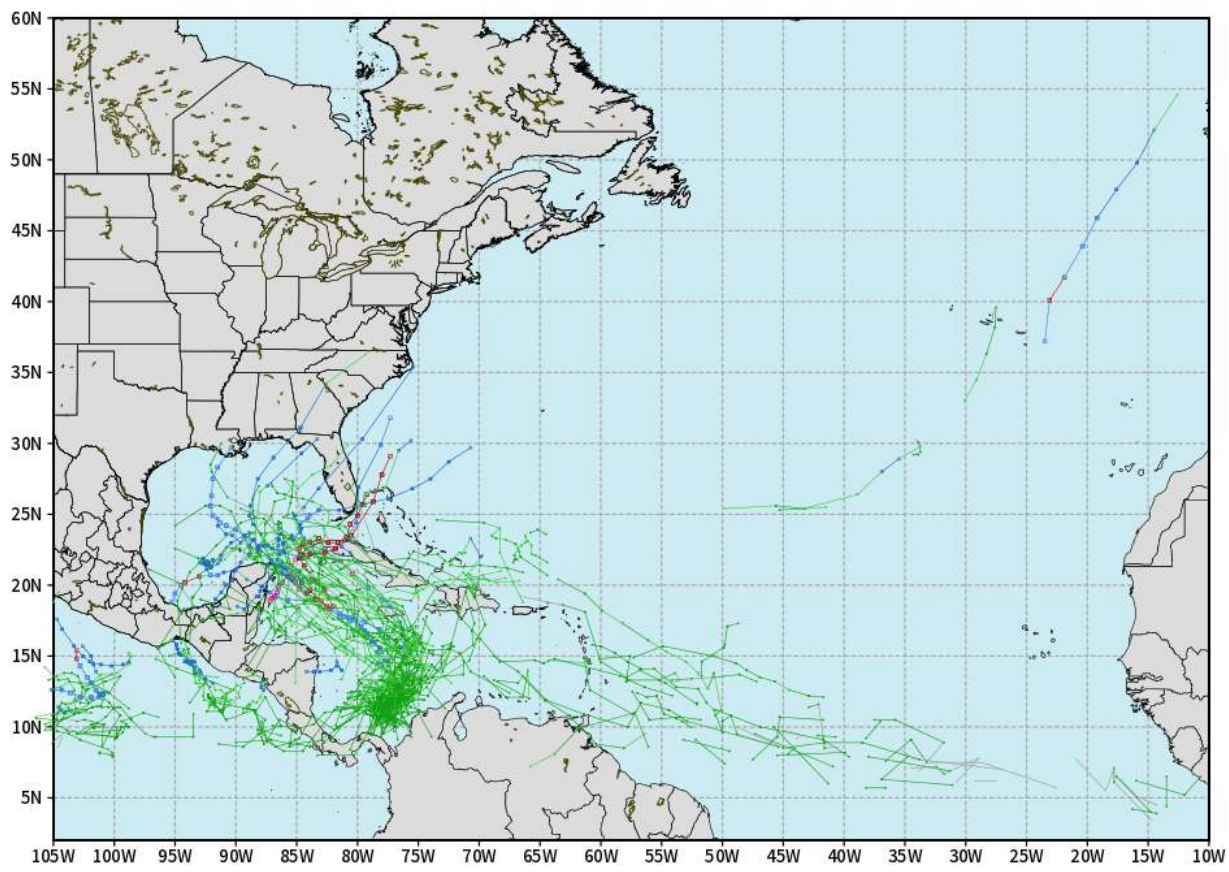
Waves heights will remain at the 2 – 3' mark until late Friday PM where they will then see another height increase going into Saturday.

Houston Pilots Tropical Update

European Tropical Tracks - Next 10 Days

ECMWF ATLANTIC EPS Cyclone Locations --> Next [10-days]
INIT: 00Z31OCT2024 --> UNTIL 00Z10NOV2024

o-o ENSEMBLE MEAN
o-o 1000 - 1010 hPa
o-o 980 - 999 hPa
o-o 960 - 979 hPa
o-o 950 - 959 hPa
o-o < 950 hPa



weathermodels.com

Currently favoring no threats for HOU over the next 7 days. We are monitoring increasing potential for tropical formation in the Western Caribbean for the Weekend.

Houston Pilots Visibility Chart (miles)



Forecast Confidence



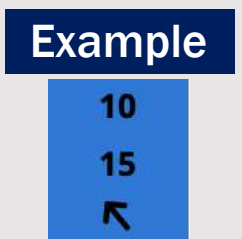
Visibility	Thu 2 pm	Thu 3 pm	Thu 4 pm	Thu 5 pm	Thu 6 pm	Thu 7 pm	Thu 8 pm	Thu 9 pm	Thu 10 pm	Thu 11 pm	Fri 12 am	Fri 1 am	Fri 2 am	Fri 3 am	Fri 4 am	Fri 5 am	Fri 6 am	Fri 7 am	Fri 8 am	Fri 9 am	Fri 10 am	Fri 11 am	Fri 12 pm	Fri 1 pm
Houston Pilots N - 610 Bridge	10	9	10	10	10	10	10	10	10	10	10	10	9	6.9	6.9	6.9	5.9	4.9	4.9	3.9	4.9	9	10	10
Houston Pilots M - Kinder 1	10	9	10	10	10	10	10	10	10	10	10	10	9	6.9	6.9	6.9	5.9	4.9	4.9	3.9	4.9	9	10	10
Houston Pilots L - Greens Bayou	10	9	10	10	10	10	10	10	10	10	10	10	9	6.9	6.9	6.9	4.9	4.9	4.9	3.9	4.9	9	10	10
Houston Pilots K - Shell Crude	10	9	10	10	10	10	10	10	10	10	10	10	9	6.9	6.9	6.9	5.9	4.9	4.9	3.9	4.9	9	10	10
Houston Pilots J - Lynchburg Ferries	10	10	6.9	10	10	10	10	10	10	10	10	10	5.9	4.9	4.9	3.9	2.9	2.9	2	1.1	3.9	6.9	10	10
Houston Pilots I - Exxon 3	10	10	5.9	10	10	10	10	10	10	10	10	10	6.9	4.9	4.9	4.9	2.9	2.9	2.5	1.6	3.9	6.9	10	10
Houston Pilots H - Morgans Point	10	10	6.9	10	10	10	10	10	10	10	10	10	6.9	4.9	4.9	4.9	2.9	2.9	2.5	2	3.9	6.9	10	10
Houston Pilots G - 75/76	10	10	6.9	5.9	10	10	10	10	10	10	10	10	6.9	4.9	4.9	4.9	2.9	2.9	2.9	3.9	3.9	6.9	9	9
Houston Pilots F - 63/64	10	10	6.9	3.9	10	10	10	10	10	10	10	10	8	4.9	4.9	4.9	4.9	4.9	4.9	3.9	4.9	6.9	9	9
Houston Pilots E - 51/52	10	10	7.9	6.9	10	10	10	10	10	10	10	9	9	8	6.9	6.9	6.9	6.9	6.9	5.9	5.9	7.9	9	9
Houston Pilots D - 37/38	10	10	10	6.9	10	10	10	10	10	10	10	9	9	8	6.9	6.9	6.9	6.9	6.9	5.9	5.9	7.9	9	9
Houston Pilots C - 25/26	10	10	10	6.9	10	10	10	10	10	10	10	9	9	8	6.9	6.9	6.9	6.9	6.9	5.9	5.9	7.9	8	8
Houston Pilots B - 11/12	10	10	10	10	10	10	10	10	10	10	10	9	9	8	6.9	6.9	6.9	6.9	6.9	6.9	6.9	6.9	8	8
Houston Pilots A - 1 & 2 Bravo	7.9	7.9	9	9	10	10	10	10	10	10	9	9	8	6.9	6.9	6.9	6.9	6.9	6.9	6.9	6.9	6.9	8	8

NOTE: This is automated data that may/may not agree with the official BAM thinking that's found on the daily slides or special visibility report slides. This data should be used as a guide only

Houston Pilots Wind Chart



Sustained wind 10 Knots
 Gusts 15 Knots
 Wind from the SE



Wind	Thu 2 pm	Thu 3 pm	Thu 4 pm	Thu 5 pm	Thu 6 pm	Thu 7 pm	Thu 8 pm	Thu 9 pm	Thu 10 pm	Thu 11 pm	Fri 12 am	Fri 1 am	Fri 2 am	Fri 3 am	Fri 4 am	Fri 5 am	Fri 6 am	Fri 7 am	Fri 8 am	Fri 9 am	Fri 10 am	Fri 11 am	Fri 12 pm	Fri 1 pm
Houston Pilots N - 610 Bridge	5 →	5 10 ←	5 9 ←	3 9 ←	3 8 ←	5 9 ←	5 8 ←	3 7 ←	3 7 ←	3 7 ←	3 7 ←	3 7 ←	3 7 ←	3 6 ←	3 6 ←	3 7 ←	3 7 ←	3 7 ←	3 7 ←	3 8 ←	5 9 ←	6 10 ←	6 12 ←	6 13 ←
Houston Pilots M - Kinder 1	5 9 →	5 10 ←	5 9 ←	5 9 ←	3 9 ←	3 9 ←	5 8 ←	3 7 ←	3 7 ←	3 7 ←	3 7 ←	3 7 ←	3 7 ←	3 6 ←	3 6 ←	3 7 ←	3 7 ←	3 7 ←	3 7 ←	3 8 ←	5 9 ←	6 10 ←	6 12 ←	6 13 ←
Houston Pilots L - Greens Bayou	5 9 ↑	5 10 ←	5 10 ←	5 9 ←	5 9 ←	5 9 ←	5 9 ←	3 8 ←	3 7 ←	3 7 ←	3 7 ←	3 7 ←	3 7 ←	3 6 ←	3 6 ←	3 7 ←	3 7 ←	3 7 ←	3 7 ←	3 8 ←	5 9 ←	6 10 ←	6 12 ←	6 13 ←
Houston Pilots K - Shell Crude	6 9 ↑	6 10 ↓	6 10 ←	5 9 ←	5 9 ←	5 9 ←	3 8 ←	3 7 ←	3 7 ←	3 7 ←	3 7 ←	3 7 ←	3 7 ←	3 6 ←	3 6 ←	3 7 ←	3 7 ←	3 7 ←	3 7 ←	3 8 ←	5 9 ←	6 10 ←	6 12 ←	6 13 ←
Houston Pilots J - Lynchburg Ferries	5 9 ↑	5 9 ↓	5 9 ↑	5 9 ←	5 9 ←	3 9 ←	3 8 ←	3 7 ←	3 7 ←	3 7 ←	3 7 ←	3 6 ←	3 6 ←	2 6 ←	2 6 ←	3 6 ←	3 6 ←	3 7 ←	3 7 ←	3 8 ←	5 9 ←	5 10 ←	6 12 ←	6 12 ←
Houston Pilots I - Exxon 3	7 12 ←	7 13 ↑	7 13 ↑	7 12 ←	7 12 ←	6 10 ←	6 10 ←	6 9 ←	6 9 ←	6 8 ←	6 8 ←	6 8 ←	6 9 ←	6 8 ←	6 8 ←	6 8 ←	6 8 ←	6 8 ←	6 9 ←	6 9 ←	7 10 ←	7 12 ←	7 13 ←	8 14 ←
Houston Pilots H - Morgans Point	7 12 ←	7 13 ←	7 13 ←	7 12 ←	7 12 ←	6 10 ←	6 10 ←	6 9 ←	6 9 ←	6 8 ←	6 8 ←	6 8 ←	6 9 ←	6 8 ←	6 8 ←	6 8 ←	6 8 ←	6 9 ←	6 9 ←	6 10 ←	7 10 ←	7 12 ←	7 13 ←	8 14 ←
Houston Pilots G - 75/76	7 13 ←	7 13 ↑	7 13 ↑	7 12 ←	7 12 ←	7 12 ←	7 10 ←	7 10 ←	7 10 ←	7 10 ←	7 9 ←	7 10 ←	7 10 ←	8 10 ←	7 10 ←	7 9 ←	7 9 ←	6 9 ←	7 9 ←	7 10 ←	8 12 ←	8 13 ←	8 13 ←	8 15 ←
Houston Pilots F - 63/64	7 12 ←	7 13 ←	6 13 ↓	7 12 ←	7 12 ←	7 12 ←	7 10 ←	7 10 ←	7 9 ←	7 9 ←	7 9 ←	7 10 ←	7 10 ←	7 10 ←	7 10 ←	7 9 ←	7 9 ←	6 9 ←	7 9 ←	7 10 ←	8 12 ←	8 13 ←	8 13 ←	8 14 ←
Houston Pilots E - 51/52	7 12 ←	6 13 ←	6 13 ↑	6 12 ←	6 12 ←	7 10 ←	6 10 ←	6 10 ←	6 9 ←	6 10 ←	6 10 ←	6 10 ←	6 10 ←	6 10 ←	6 10 ←	6 9 ←	6 9 ←	6 9 ←	6 9 ←	6 10 ←	7 12 ←	8 13 ←	8 13 ←	8 15 ←
Houston Pilots D - 37/38	6 12 ←	6 13 ←	6 12 ←	6 12 ←	6 12 ←	6 10 ←	6 10 ←	6 9 ←	6 9 ←	6 10 ←	6 10 ←	6 10 ←	6 10 ←	6 10 ←	6 10 ←	6 9 ←	6 9 ←	6 9 ←	6 9 ←	6 10 ←	7 12 ←	8 13 ←	8 13 ←	8 15 ←
Houston Pilots C - 25/26	7 12 ←	6 12 ←	6 12 ←	6 10 ←	6 10 ←	6 10 ←	6 10 ←	6 9 ←	6 9 ←	6 10 ←	6 10 ←	6 10 ←	6 10 ←	6 10 ←	6 10 ←	6 9 ←	6 9 ←	6 9 ←	6 9 ←	6 10 ←	7 12 ←	8 13 ←	8 13 ←	8 15 ←
Houston Pilots B - 11/12	7 12 ←	7 12 ←	6 12 ←	6 10 ←	6 10 ←	6 10 ←	6 10 ←	6 9 ←	6 9 ←	6 10 ←	6 10 ←	6 10 ←	6 10 ←	6 10 ←	6 10 ←	6 9 ←	6 9 ←	6 9 ←	6 9 ←	6 10 ←	7 12 ←	8 13 ←	8 13 ←	8 15 ←
Houston Pilots A - 1 & 2 Bravo	7 12 ←	6 12 ←	6 12 ←	7 10 ←	6 12 ←	7 12 ←	7 10 ←	7 10 ←	8 10 ←	8 12 ←	8 12 ←	8 13 ←	8 13 ←	8 13 ←	8 12 ←	8 12 ←	8 12 ←	7 10 ←	7 10 ←	7 10 ←	8 12 ←	8 13 ←	8 14 ←	9 15 ←

NOTE: This is automated data that may/may not agree with the official BAM thinking that's found on the daily slides. This data should be used as a guide only.

Houston Pilots: THU. 10/31/2024



Forecast Discussion

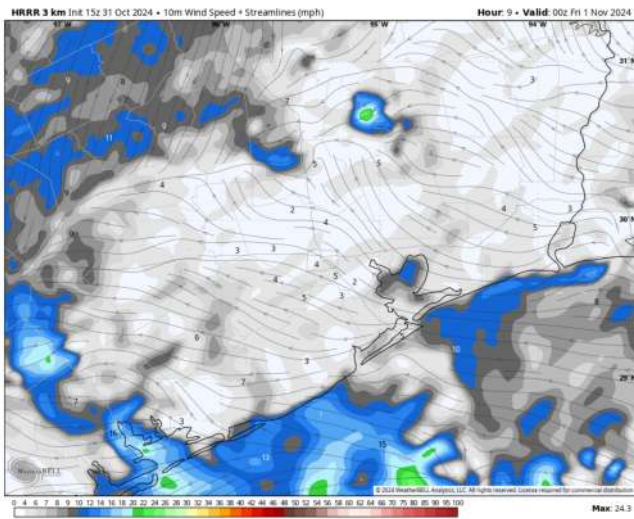
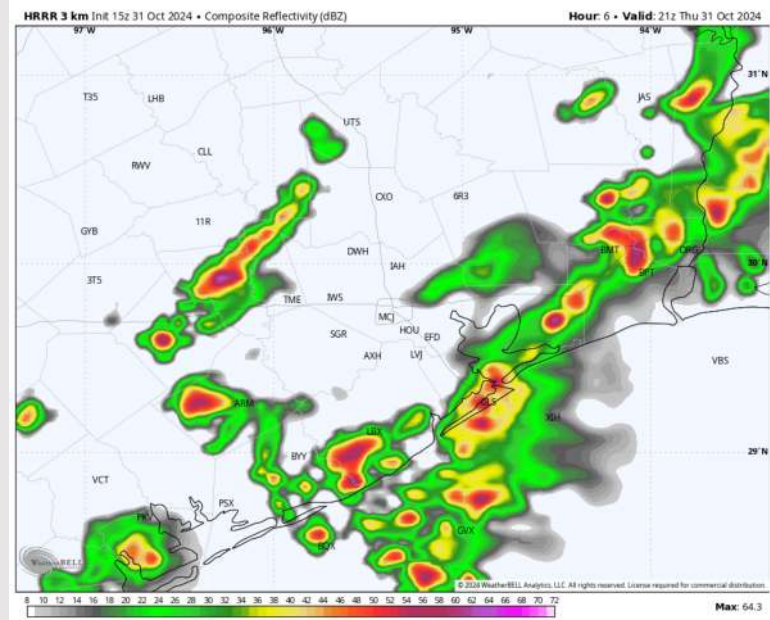
Precip: Favoring scattered showers and a few storms to be in play for all stations (30%) through 7 PM. **A few stronger storms are possible with wind gusts up to 35 kts.**

Wind: Winds will be rather variable through 6PM with the tendency to be out of the E/SE. Winds are expected to settle out of the E/SE after 6 PM. **N of Morgan's Point:** Winds will be at 3 – 8 kts for the rest of the day. **S of Morgan's Point:** Winds will be at 8 – 13 kts for the remainder of the day. **Wind gusts of 20-25 kts will be possible for the Boarding Station and 11/12 through 4PM.**

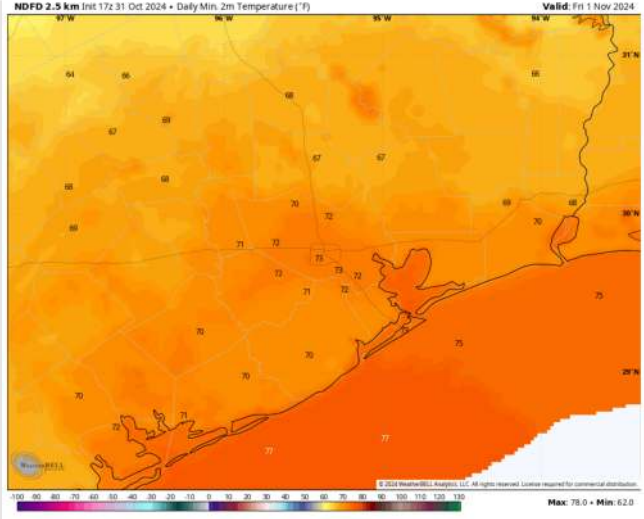
Low Temps: **N of Morgan's Point:** Low 70s F. **S of Morgan's Point:** Low to mid 70s F.

Visibility: Visibilities may be reduced in heavy downpours. Otherwise, no fog concerns for any Stations.

Precip Image: 4 PM CT



Wind Speed
7 PM CT



Low Temps
FRI AM

Houston Pilots: FRI. 11/1/2024



Forecast Discussion

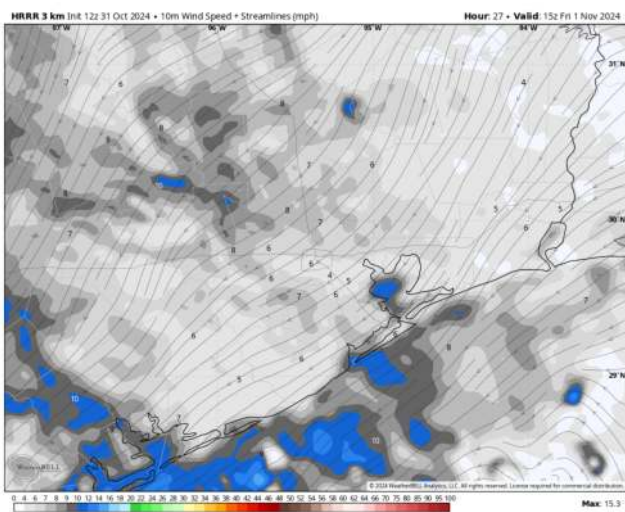
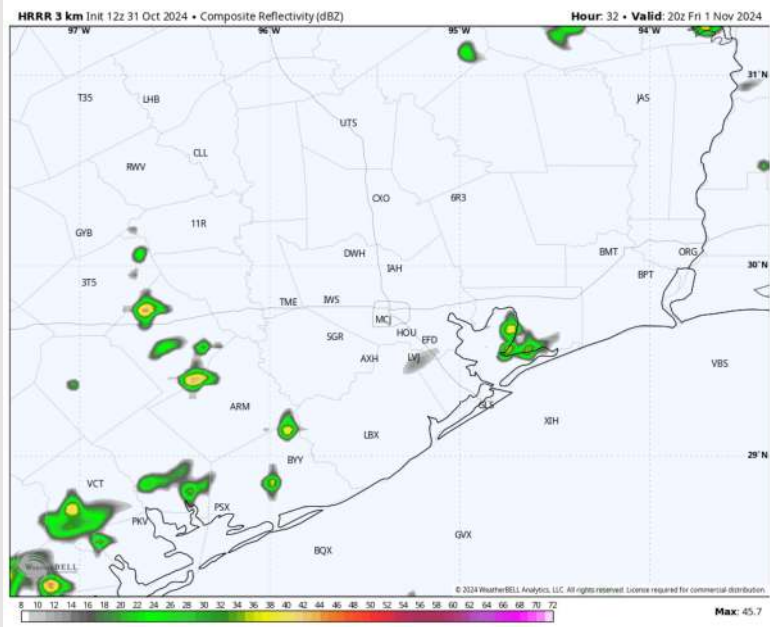
Precip: Hit/miss chances for light showers from 12 AM – 8 AM. Isolated rain chances will continue through 9 PM before clearing out.

Wind: Winds will be out of the E/NE through 4 PM, shifting to be out of the E/SE after then. **N of Morgan's Point:** Winds will be at 3 – 6 kts for Friday. **S of Morgan's Point:** Winds will be 7 – 12 kts throughout Friday.

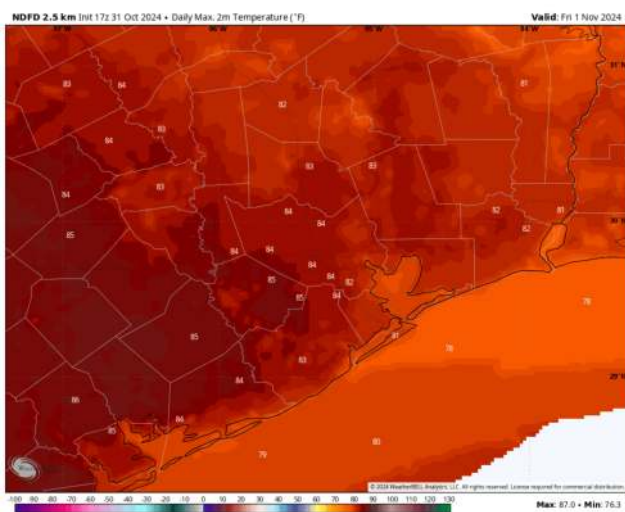
High Temps: **N of Morgan's Point:** Low 80s F. **S of Morgan's Point:** Upper 70s to near 80 F.

Visibility: No visibility concerns for Friday.

Precip Image: 3 PM CT



Wind Speed:
10 AM CT



High Temps
Friday

Houston Pilots: SAT. 11/2/2024



Forecast Discussion

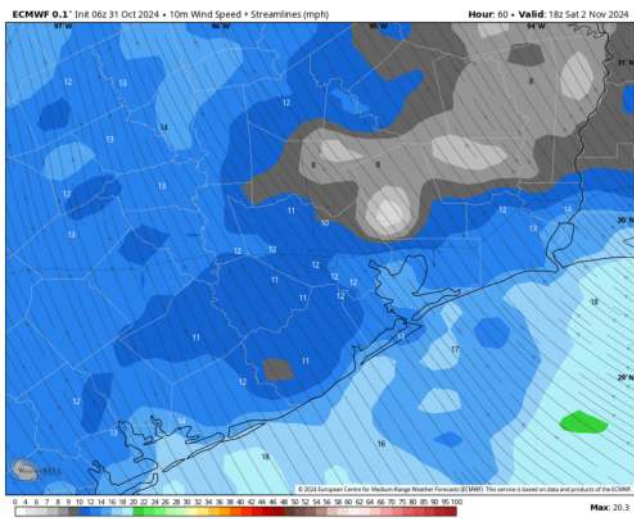
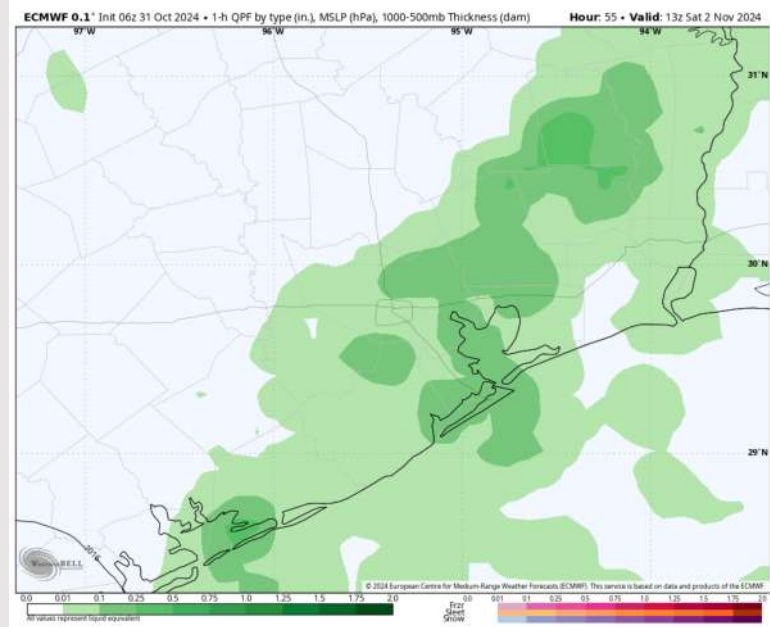
Precip: Favoring multiple rounds of showers and a few storms to be in play for all stations (60%) between 1AM and 6PM. Greatest coverage is expected from 7 AM – 3 PM.

Wind: Winds will be out of the S/SE throughout the day. **N of Morgan's Point:** Winds will be at 8 – 12 kts for the entire day. **S of Morgan's Point:** Winds will be at 12 - 18 kts throughout the day. **Wind gusts of 20 – 25 MPH are favored for all Stations after 11 AM.**

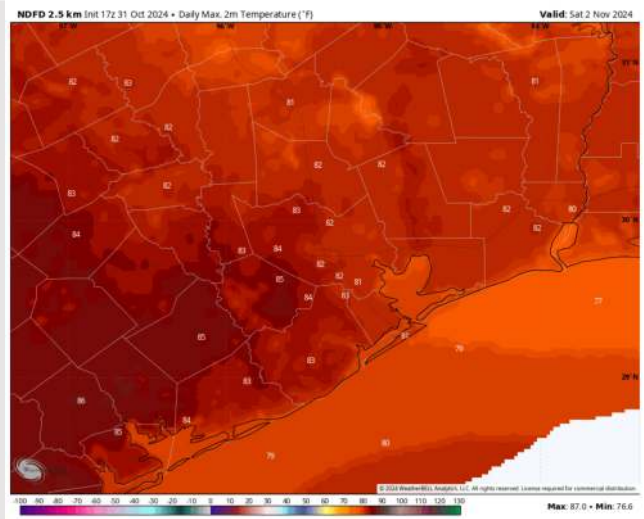
High Temps: **N of Morgan's Point:** Low to mid 80s F. **S of Morgan's Point:** Upper 70s to lower 80s F.

Visibility: No visibility concerns for Saturday.

Precip Image: 8 AM CT

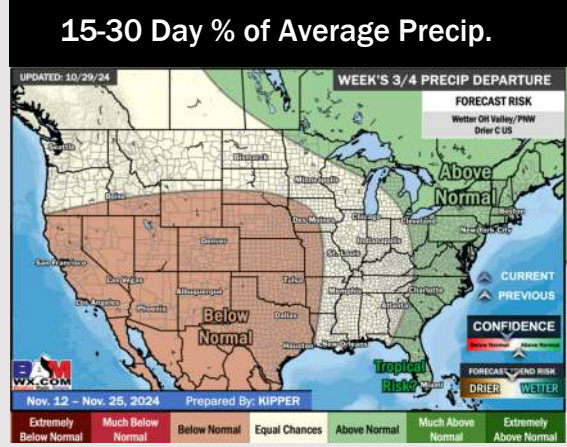
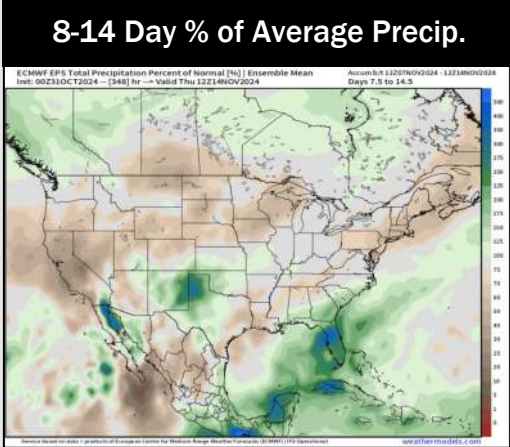
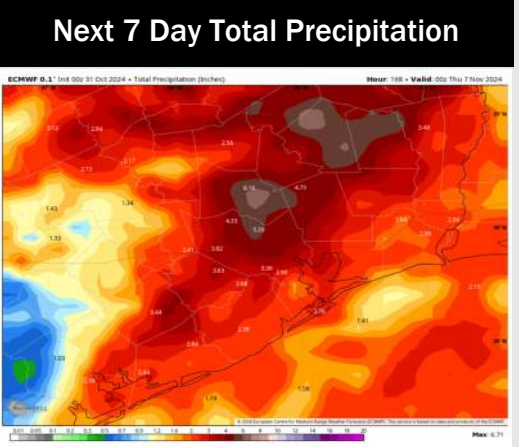
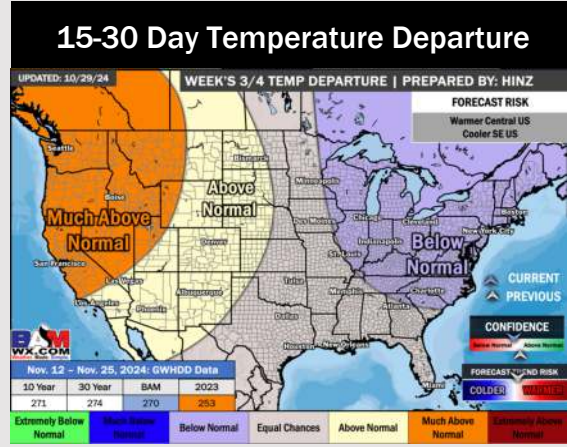
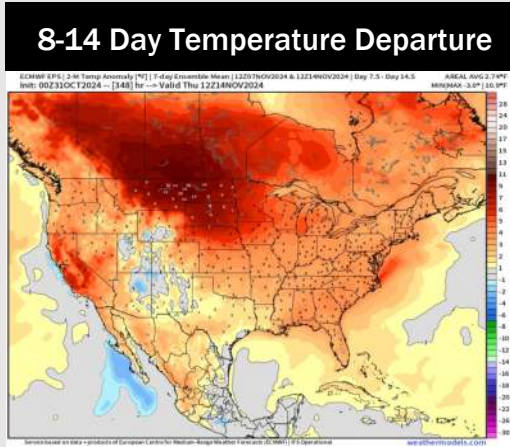
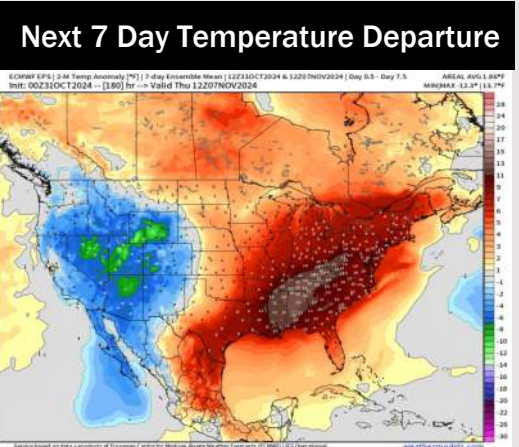


Wind Speed:
1 PM CT



High Temps
Saturday

Houston Pilots: 10/31/24



- Temps are expected to be above normal for the week 1 timeframe. Favoring scattered rain chances to continue into the weekend.
- Above normal temperatures are favored for week 2. Favoring precipitation to be slightly below normal.
- Near normal temperatures and below normal precipitation chances are expected for the weeks 3/4 timeframe.