

# Houston Pilots Forecast Package



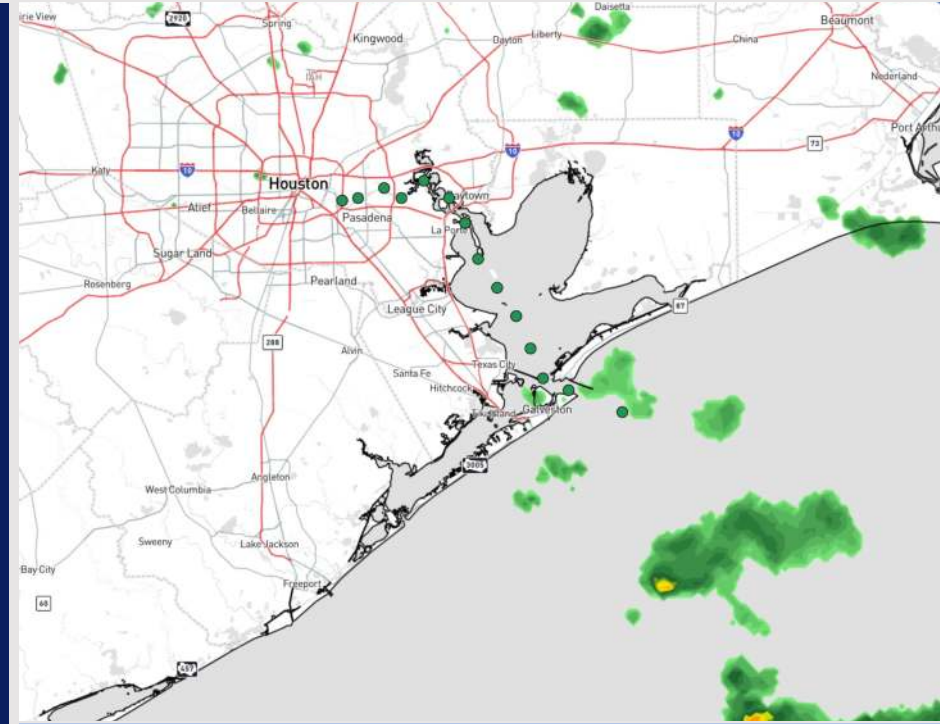
Updated: 11:30 PM CT

Thursday, October 31, 2024

Forecaster: John Kemper

## Weather Headlines

- Wave heights currently at 3 - 5' for Boarding Station will be on the decrease through early this morning. See wave heights slide for more info.
- Gusty winds of 20-25 kts expected through this afternoon.
- No tropical concerns for at least the next 7 days!

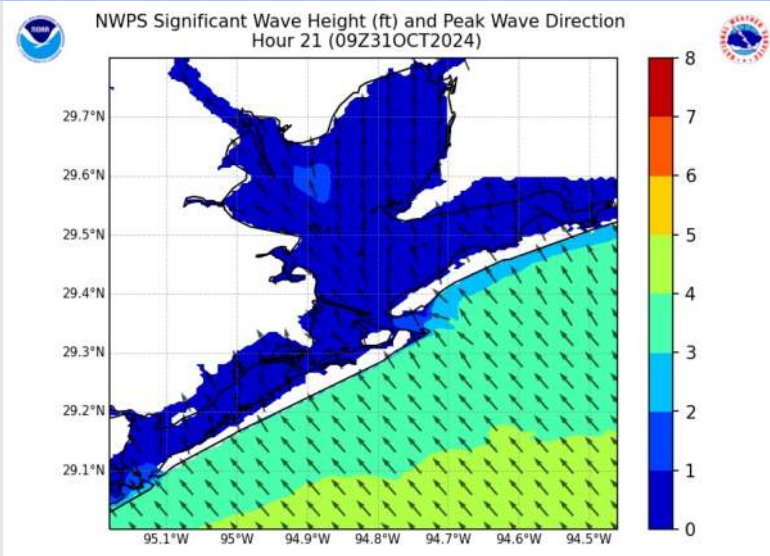


**Current Radar: 11:23 PM CT**



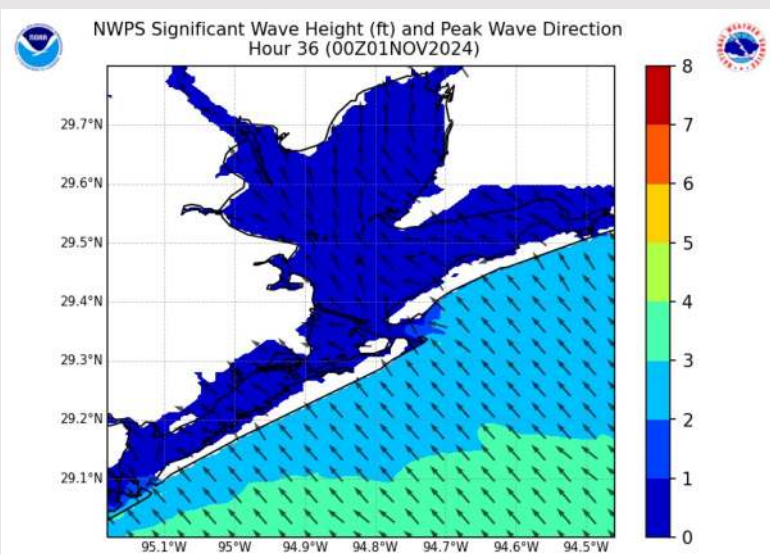
As always, please do not hesitate to reach out to us with any forecast questions via the chat option on Clarity or our on-call number, **(317)-560-8122** press **1** for forecast questions.

# Wave Height Forecast Update



4 AM CT THU

Observed wave heights currently sit at 3 – 5' near the Boarding Station. Favoring max wave heights to continue to decrease throughout the day today, dropping to 3 – 4' by ~4 AM.



7 PM CT THU

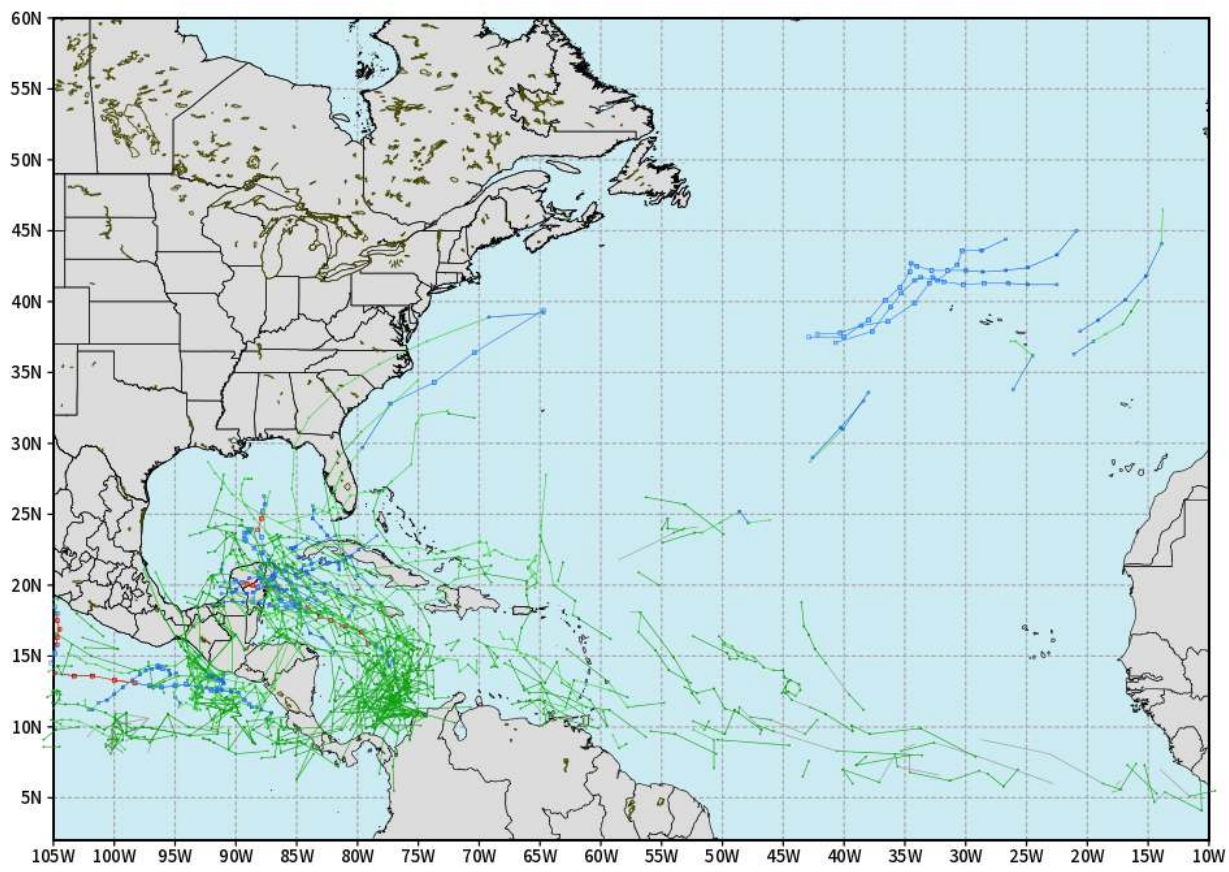
Waves heights at the Boarding Station will drop to 2' – 3' by 7PM today, and remain at the 2 – 3' mark until late Friday PM where they will then see another height increase.

# Houston Pilots Tropical Update

## European Tropical Tracks - Next 10 Days

ECMWF ATLANTIC EPS Cyclone Locations --> Next [10-days]  
INIT: 12Z30OCT2024 --> UNTIL 12Z09NOV2024

o-o ENSEMBLE MEAN  
o-o 1000 - 1010 hPa  
o-o 980 - 999 hPa  
o-o 960 - 979 hPa  
o-o 950 - 959 hPa  
o-o < 950 hPa



[weathermodels.com](http://weathermodels.com)

Currently favoring no threats for HOU over the next 7 days. We are monitoring increasing potential for tropical formation in the Western Caribbean for the Weekend.



# Houston Pilots Tropical Update



## Potential Tropical Development

**TROPICAL INSIGHT** 9:55 PM ET Wednesday, October 30<sup>th</sup>, 2024 **Forecaster:** Lowry



Formation Chances **0 - 20%** **20%-40%** **40%-60%** **60%-80%** **80% - 100%**

**TIMING:** SUN 11/3 – TUE 11/5

### FORECAST NOTES:

- ✓ Data shows support of gradual tropical development late this weekend / into early next week.
- ✓ Exact details on potential track remain uncertain at this time and potential US impacts cannot be 100% ruled out.



# Houston Pilots Visibility Chart (miles)



## Forecast Confidence



Visibility	Thu 1 am	Thu 2 am	Thu 3 am	Thu 4 am	Thu 5 am	Thu 6 am	Thu 7 am	Thu 8 am	Thu 9 am	Thu 10 am	Thu 11 am	Thu 12 pm	Thu 1 pm	Thu 2 pm	Thu 3 pm	Thu 4 pm	Thu 5 pm	Thu 6 pm	Thu 7 pm	Thu 8 pm	Thu 9 pm	Thu 10 pm	Thu 11 pm	Fri 12 am
Houston Pilots N - 610 Bridge	9	10	6.9	6.9	6.9	5.9	4.9	4.9	4.9	5.9	9	10	10	10	10	10	10	10	10	10	10	10	10	10
Houston Pilots M - Kinder 1	10	10	7.9	6.9	6.9	5.9	4.9	4.9	4.9	5.9	10	10	10	10	10	10	10	10	10	10	10	10	10	10
Houston Pilots L - Greens Bayou	10	10	9	7.9	6.9	6.9	5.9	4.9	4.9	6.9	10	10	10	10	10	10	10	10	10	10	10	10	10	10
Houston Pilots K - Shell Crude	10	10	9	9	6.9	6.9	5.9	5.9	4.9	6.9	10	10	10	10	10	10	10	10	10	10	10	10	10	10
Houston Pilots J - Lynchburg Ferries	10	10	9	7.9	6.9	6.9	5.9	5.9	4.9	6.9	10	10	10	10	10	10	10	10	10	10	10	10	10	10
Houston Pilots I - Exxon 3	10	10	10	9	7.9	6.9	6.9	5.9	5.9	6.9	10	10	10	10	10	10	10	10	10	10	10	10	10	10
Houston Pilots H - Morgans Point	10	10	10	9	7.9	6.9	6.9	5.9	5.9	6.9	10	10	10	10	10	10	10	10	10	10	10	10	10	10
Houston Pilots G - 75/76	10	10	9	9	7.9	6.9	6.9	6.9	6.9	6.9	10	10	10	10	10	10	10	10	10	10	10	10	10	7
Houston Pilots F - 63/64	10	10	9	9	7.9	6.9	6.9	6.9	6.9	7.9	10	10	10	10	10	10	10	10	10	10	10	10	10	5
Houston Pilots E - 51/52	7.9	7.9	9	9	6.9	6.9	6.9	6.9	6.9	7.9	10	10	10	10	10	10	10	10	10	10	10	10	10	5
Houston Pilots D - 37/38	7.9	7.9	9	9	7.9	6.9	6.9	6.9	6.9	7.9	10	10	10	10	10	10	10	10	10	10	10	10	10	5
Houston Pilots C - 25/26	6.9	9	9	9	7.9	7.9	6.9	6.9	6.9	7.9	10	10	10	10	10	10	10	10	10	10	10	10	10	6
Houston Pilots B - 11/12	6.9	7.9	9	9	7.9	9	6.9	7.9	7.9	7.9	10	10	10	10	10	10	10	10	10	10	10	10	9	7
Houston Pilots A - 1 & 2 Bravo	6.9	7.9	7.9	9	7.9	9	7.9	9	7.9	7.9	6.9	9	9	9	7.9	9	9	9	9	9	9	9	7.9	8

**NOTE: This is automated data that may/may not agree with the official BAM thinking that's found on the daily slides or special visibility report slides. This data should be used as a guide only**

# Houston Pilots Wind Chart



Sustained wind 10 Knots

Gusts 15 Knots

Wind from the SE

**Example**

10

15

↙

Wind	Thu 1 am	Thu 2 am	Thu 3 am	Thu 4 am	Thu 5 am	Thu 6 am	Thu 7 am	Thu 8 am	Thu 9 am	Thu 10 am	Thu 11 am	Thu 12 pm	Thu 1 pm	Thu 2 pm	Thu 3 pm	Thu 4 pm	Thu 5 pm	Thu 6 pm	Thu 7 pm	Thu 8 pm	Thu 9 pm	Thu 10 pm	Thu 11 pm	Fri 12 am
Houston Pilots N - 610 Bridge	10 20 ↖	9 18 ↖	8 17 ↖	7 15 ↖	6 14 ↖	6 13 ↖	5 10 ↖	5 9 ↖	3 9 ↖	3 9 ↖	5 9 ↖	5 10 ↖	5 9 ↖	5 10 ↖	5 9 ↖	5 9 ↖	3 9 ↖	3 9 ↖	3 9 ↖	5 8 ↖	3 7 ↖	3 7 ↖	3 7 ↖	3 7 ↖
Houston Pilots M - Kinder 1	10 21 ↖	9 18 ↖	8 17 ↖	7 15 ↖	6 14 ↖	6 13 ↖	5 12 ↖	5 9 ↖	3 9 ↖	3 9 ↖	5 9 ↖	5 10 ↖	5 9 ↖	5 10 ↖	5 9 ↖	5 9 ↖	5 9 ↖	3 9 ↖	3 9 ↖	5 8 ↖	3 7 ↖	3 7 ↖	3 7 ↖	3 7 ↖
Houston Pilots L - Greens Bayou	10 21 ↖	9 20 ↖	8 18 ↖	7 16 ↖	6 14 ↖	6 13 ↖	5 12 ↖	5 10 ↖	3 9 ↖	3 9 ↖	5 9 ↖	5 10 ↖	5 9 ↖	5 10 ↖	5 9 ↖	5 9 ↖	5 9 ↖	5 9 ↖	5 9 ↖	5 8 ↖	3 7 ↖	3 7 ↖	3 7 ↖	3 7 ↖
Houston Pilots K - Shell Crude	10 22 ↖	9 20 ↖	8 18 ↖	7 16 ↖	6 14 ↖	6 13 ↖	5 12 ↖	5 10 ↖	3 9 ↖	3 9 ↖	5 9 ↖	5 10 ↖	5 10 ↖	6 10 ↖	6 9 ↖	6 9 ↖	5 9 ↖	5 9 ↖	5 9 ↖	5 8 ↖	3 7 ↖	3 7 ↖	3 7 ↖	3 7 ↖
Houston Pilots J - Lynchburg Ferries	10 22 ↖	9 21 ↖	8 18 ↖	7 16 ↖	6 14 ↖	6 13 ↖	5 12 ↖	3 10 ↖	3 9 ↖	3 9 ↖	3 9 ↖	5 10 ↖	5 9 ↖	5 10 ↖	5 9 ↖	5 9 ↖	5 9 ↖	5 9 ↖	3 9 ↖	3 9 ↖	3 8 ↖	3 7 ↖	3 7 ↖	3 7 ↖
Houston Pilots I - Exxon 3	16 22 ↖	15 22 ↖	15 20 ↖	13 18 ↖	10 17 ↖	10 15 ↖	8 14 ↖	8 13 ↖	7 12 ↖	7 10 ↖	6 10 ↖	6 12 ↖	6 12 ↖	7 13 ↖	7 12 ↖	7 12 ↖	7 13 ↖	7 12 ↖	7 10 ↖	7 10 ↖	6 9 ↖	6 8 ↖	6 8 ↖	6 8 ↖
Houston Pilots H - Morgans Point	16 22 ↖	15 22 ↖	14 20 ↖	13 18 ↖	10 17 ↖	10 15 ↖	8 14 ↖	8 13 ↖	7 12 ↖	6 10 ↖	6 10 ↖	6 12 ↖	6 12 ↖	7 13 ↖	7 12 ↖	7 12 ↖	7 12 ↖	7 12 ↖	7 10 ↖	6 10 ↖	6 9 ↖	6 8 ↖	6 8 ↖	6 8 ↖
Houston Pilots G - 75/76	17 25 ↖	17 23 ↖	15 22 ↖	14 21 ↖	13 20 ↖	12 17 ↖	10 16 ↖	9 15 ↖	8 14 ↖	8 13 ↖	7 12 ↖	6 12 ↖	6 12 ↖	7 13 ↖	7 12 ↖	7 13 ↖	7 13 ↖	7 13 ↖	7 12 ↖	7 10 ↖	7 10 ↖	7 9 ↖	7 9 ↖	7 9 ↖
Houston Pilots F - 63/64	17 24 ↖	16 23 ↖	15 22 ↖	14 21 ↖	13 20 ↖	12 17 ↖	10 16 ↖	9 15 ↖	8 14 ↖	8 13 ↖	7 12 ↖	6 12 ↖	6 12 ↖	6 13 ↖	6 12 ↖	6 12 ↖	6 13 ↖	6 13 ↖	6 12 ↖	6 10 ↖	6 10 ↖	6 9 ↖	6 9 ↖	6 9 ↖
Houston Pilots E - 51/52	17 24 ↖	16 23 ↖	15 22 ↖	14 21 ↖	13 20 ↖	12 17 ↖	10 16 ↖	9 15 ↖	8 14 ↖	8 13 ↖	7 12 ↖	6 12 ↖	6 12 ↖	6 13 ↖	6 12 ↖	6 12 ↖	6 12 ↖	6 12 ↖	6 10 ↖	6 10 ↖	6 9 ↖	6 9 ↖	6 9 ↖	6 9 ↖
Houston Pilots D - 37/38	16 23 ↖	15 22 ↖	15 22 ↖	14 20 ↖	13 20 ↖	12 17 ↖	10 16 ↖	9 15 ↖	8 14 ↖	8 13 ↖	7 12 ↖	6 12 ↖	6 12 ↖	6 13 ↖	6 12 ↖	6 12 ↖	6 12 ↖	6 12 ↖	6 10 ↖	6 10 ↖	6 9 ↖	6 9 ↖	6 9 ↖	6 9 ↖
Houston Pilots C - 25/26	15 23 ↖	15 22 ↖	14 22 ↖	13 20 ↖	13 20 ↖	12 17 ↖	10 16 ↖	9 15 ↖	8 14 ↖	8 13 ↖	7 12 ↖	6 12 ↖	6 12 ↖	6 13 ↖	6 12 ↖	6 12 ↖	6 12 ↖	6 12 ↖	6 10 ↖	6 10 ↖	6 9 ↖	6 9 ↖	6 9 ↖	6 9 ↖
Houston Pilots B - 11/12	14 22 ↖	13 22 ↖	13 21 ↖	12 20 ↖	10 20 ↖	10 17 ↖	9 16 ↖	9 15 ↖	8 14 ↖	8 13 ↖	7 12 ↖	6 12 ↖	6 12 ↖	6 13 ↖	6 12 ↖	6 12 ↖	6 12 ↖	6 12 ↖	6 10 ↖	6 10 ↖	6 9 ↖	6 9 ↖	6 9 ↖	6 9 ↖
Houston Pilots A - 1 & 2 Bravo	16 25 ↖	16 24 ↖	15 24 ↖	15 23 ↖	14 21 ↖	13 20 ↖	13 18 ↖	12 17 ↖	10 16 ↖	9 15 ↖	8 14 ↖	8 13 ↖	7 13 ↖	7 13 ↖	6 13 ↖	6 12 ↖	6 12 ↖	6 12 ↖	6 10 ↖	6 10 ↖	6 10 ↖	6 10 ↖	6 10 ↖	6 10 ↖

**NOTE: This is automated data that may/may not agree with the official BAM thinking that's found on the daily slides. This data should be used as a guide only.**



# Houston Pilots: THU. 10/31/2024



## Forecast Discussion

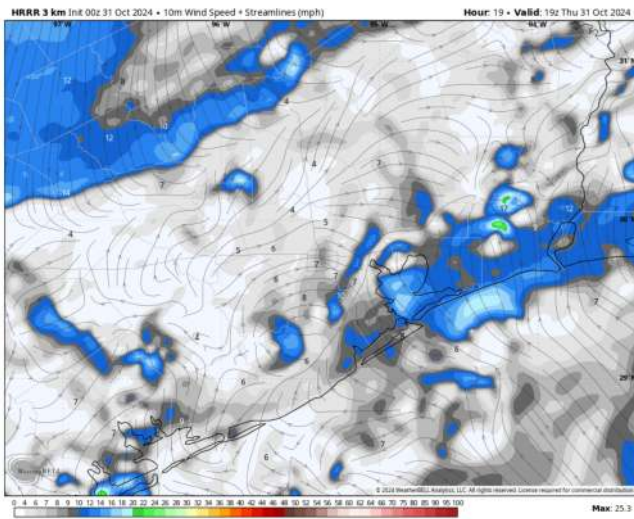
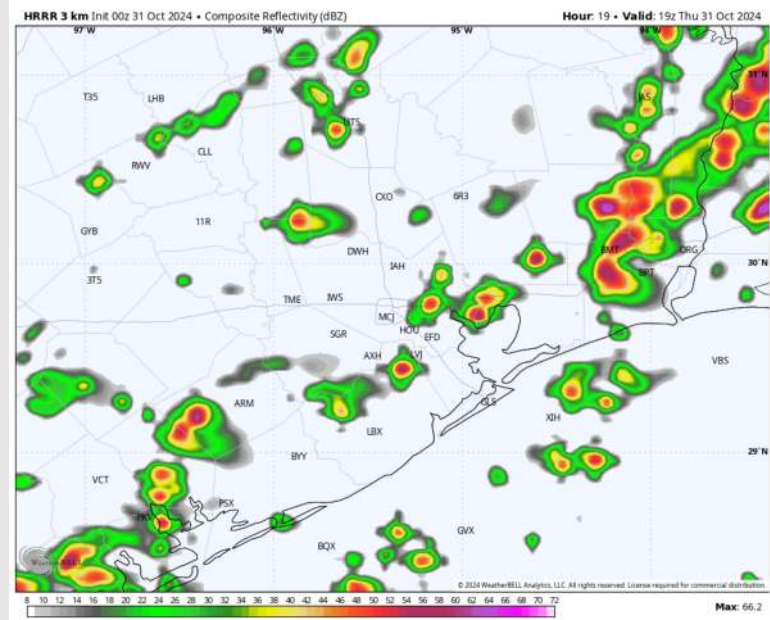
**Precip:** Favoring scattered showers and a few storms to be in play for all stations (30%) between 12AM – 6PM.

**Wind:** Winds will be out of the SE through 2PM before veering out of the E / ESE. After 5PM, winds will become variable. **N of Morgan's Point:** Winds will be at 5 – 8 kts for all of today. **S of Morgan's Point:** Winds will be at 13 – 18 kts through 6AM before weakening to 8 – 13 kts for the remainder of the day. **Wind gusts of 20-25 kts will be possible for the Boarding Station and 11/12 through 4PM.**

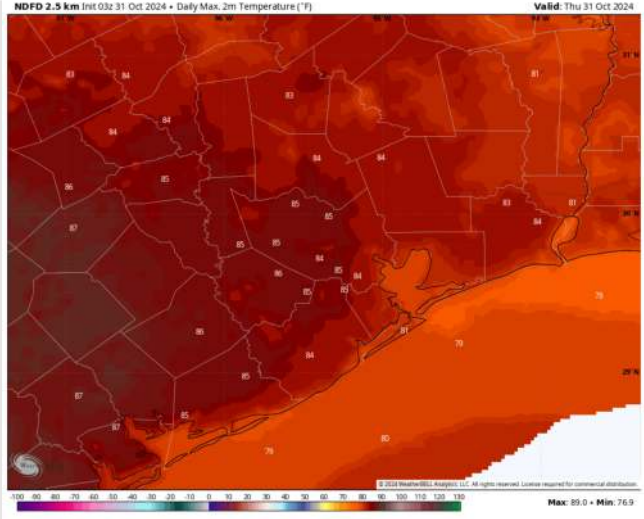
**High Temps:** **N of Morgan's Point:** Low to Mid 80s F. **S of Morgan's Point:** Near 80 F.

**Visibility:** No visibility concerns favored for stations.

## Precip Image: 2 PM CT



Wind Speed  
4 PM CT



High Temps  
Today

# Houston Pilots: FRI. 11/1/2024



## Forecast Discussion

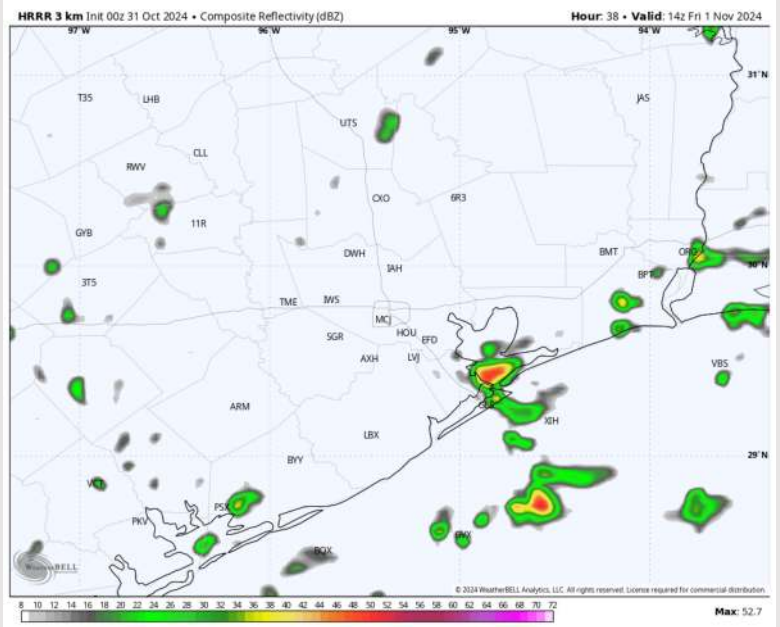
**Precip:** Favoring low end chances for a few, brief showers and downpours for all stations from 8AM – 4PM on Friday.

**Wind:** Winds will be out of the E throughout the day. **N of Morgan's Point:** Winds will be at 3 – 6 kts for Friday. **S of Morgan's Point:** Winds will be 10 – 15 kts throughout Friday.

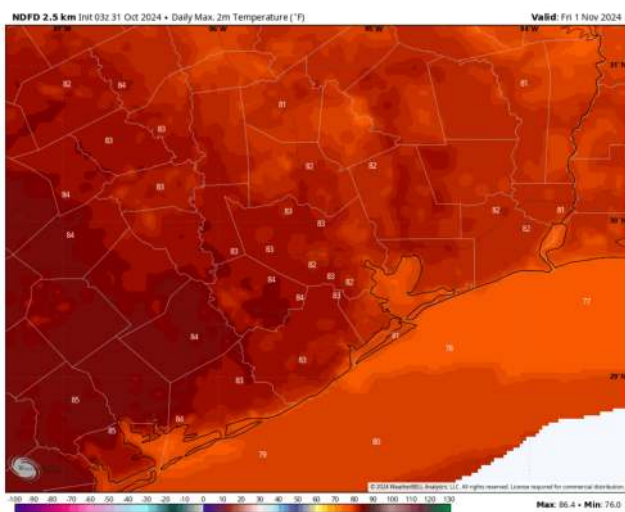
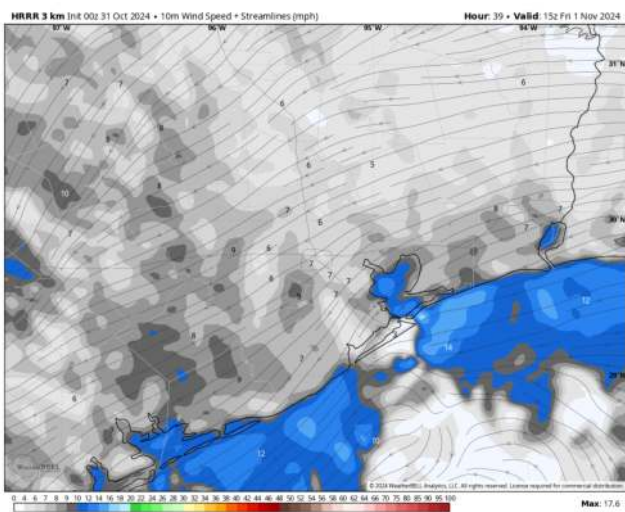
**High Temps:** **N of Morgan's Point:** Low 80s F. **S of Morgan's Point:** Upper 70s F.

**Visibility:** No visibility concerns for Friday.

## Precip Image: 9 AM CT



Wind Speed:  
10 AM CT



High Temps  
Friday



# Houston Pilots: SAT. 11/2/2024



## Forecast Discussion

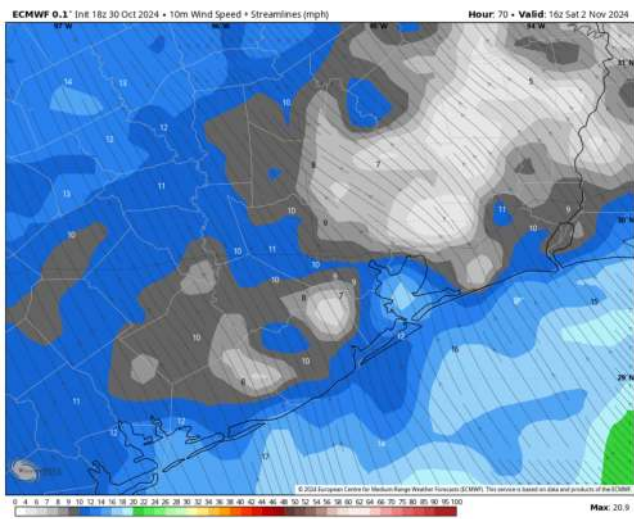
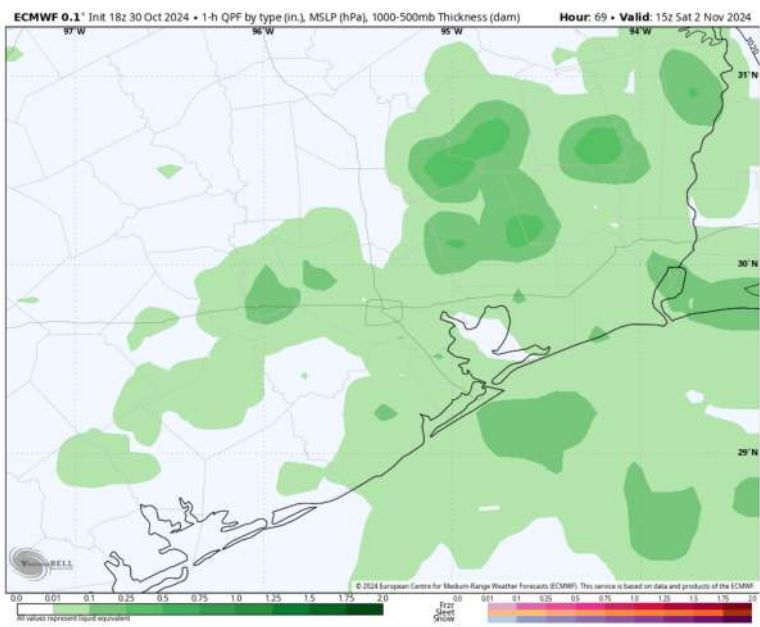
**Precip:** Favoring multiple rounds of showers and a few storms to be in play for all stations (40%) between 2AM and 8PM.

**Wind:** Winds will be out of the S/SE throughout the day. **N of Morgan's Point:** Winds will be at 8 – 12 kts for the entire day. **S of Morgan's Point:** Winds will be at 10 - 15 kts throughout the day. **Stations S of Morgan's Point will see gusts of 20-25 kts through the entire day.**

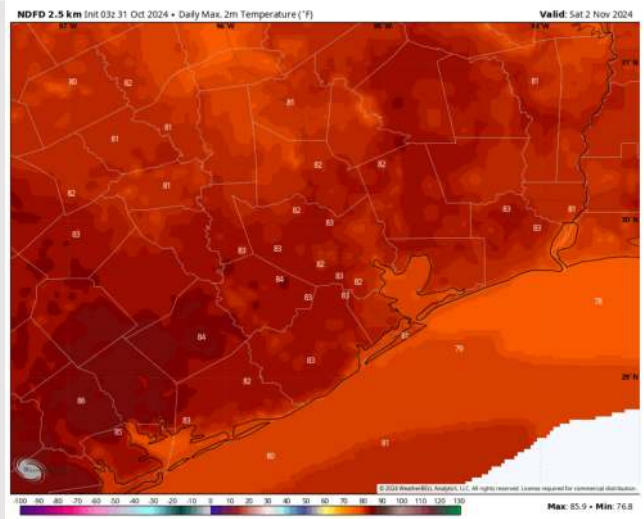
**High Temps:** **N of Morgan's Point:** Mid 80s F. **S of Morgan's Point:** Lower 70s F.

**Visibility:** No visibility concerns for Saturday.

## Precip Image: 10 AM CT

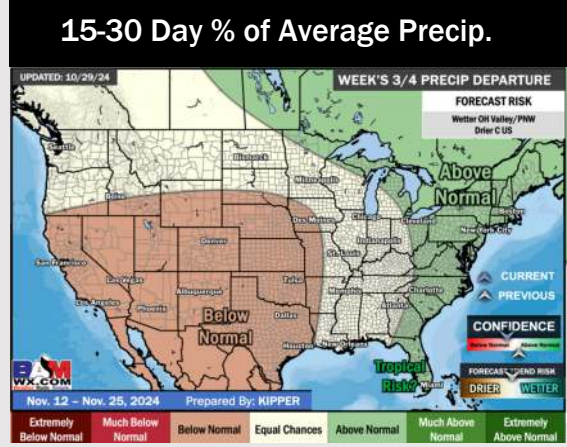
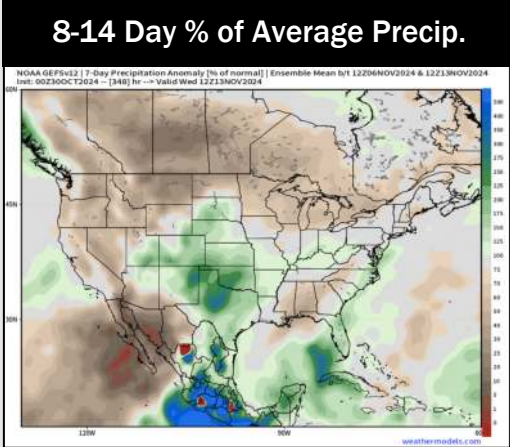
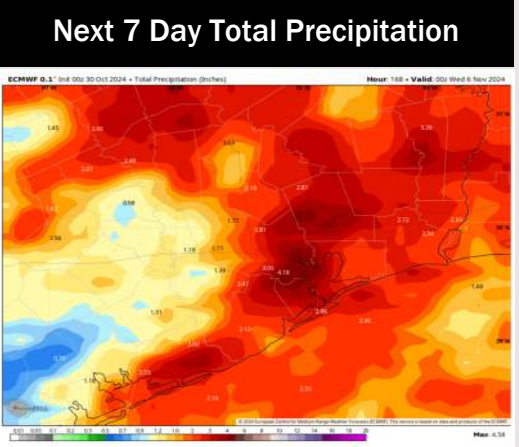
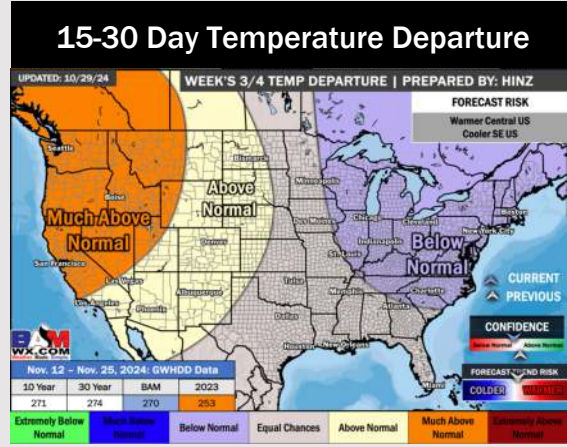
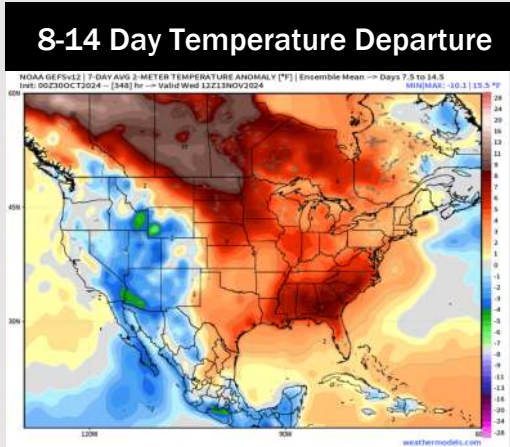
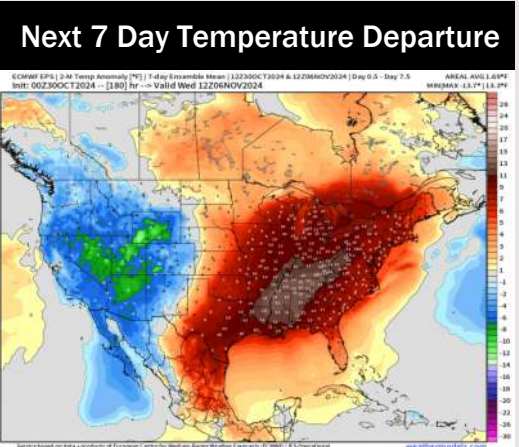


Wind Speed:  
11 AM CT



High Temps  
Saturday

# Houston Pilots: 10/31/24



- Temps are expected to be above normal for the week 1 timeframe. Favoring scattered rain chances to continue late week.
- Above normal temperatures are favored for week 2. Favoring precipitation to be slightly below normal.
- Near normal temperatures and below normal precipitation chances are expected for the weeks 3/4 timeframe.