

# Houston Pilots Forecast Package



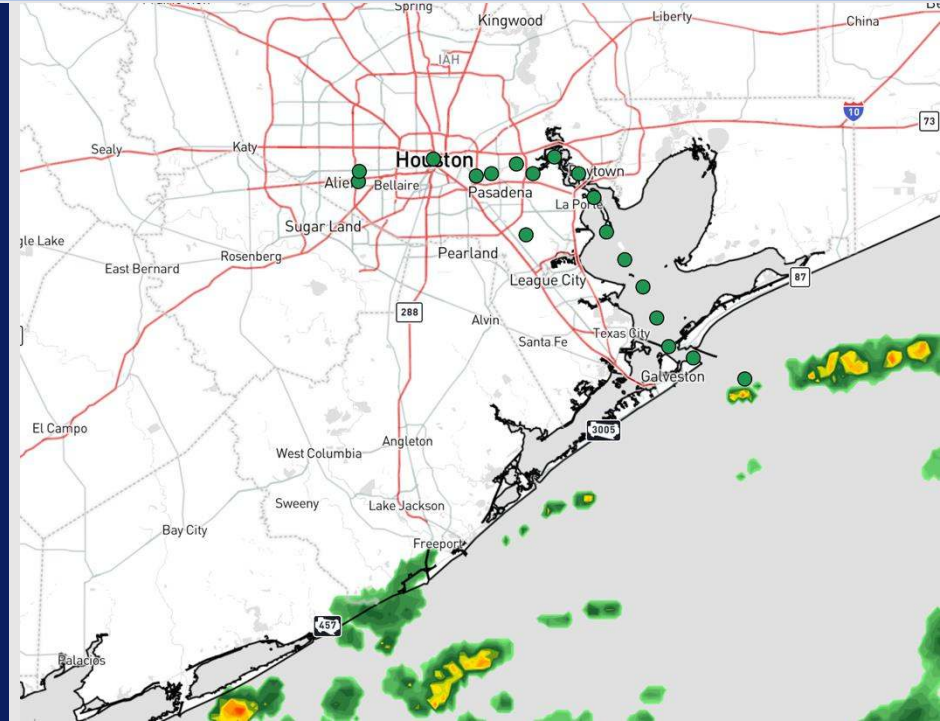
Updated: 12:00 PM CT

Friday, October 4, 2024

Forecaster: Adam Feick

## Weather Headlines

- Isolated rain chances will be possible S of Morgan's Point through Saturday.
- Not anticipating any visibility concerns for stations.
- **Next potential system to develop ~ early next week. No impacts for Houston favored! See Latest Tropical Update below!**



**Current Radar: 11:40 AM CT**



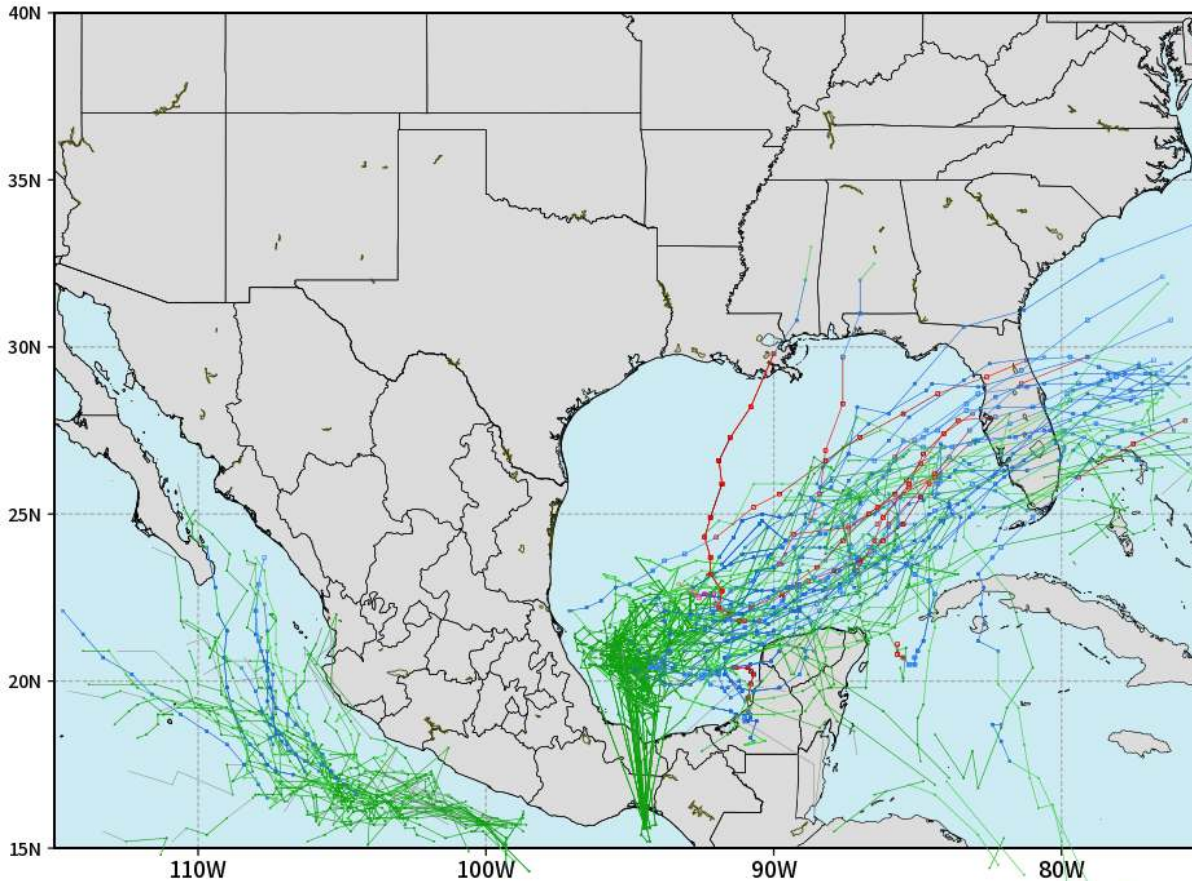
As always, please do not hesitate to reach out to us with any forecast questions via the chat option on Clarity or our on-call number, **(317)-560-8122** press 1 for forecast questions.

# Houston Pilots Tropical Update

## European Model Next 10 Days - Tropical Tracks

ECMWF GULF EPS Cyclone Locations --> Next [10-days]  
INIT: 00Z04OCT2024 --> UNTIL 00Z14OCT2024

o-o ENSEMBLE MEAN  
o-o 1000 - 1010 hPa  
o-o 980 - 999 hPa  
o-o 960 - 979 hPa  
o-o 950 - 959 hPa  
o-o < 950 hPa



[weathermodels.com](http://weathermodels.com)

Industry Energy according to our TOS (if5580f5Z0021K606)

Models remain consistent in a tropical system developing near the Yucatan Peninsula and pushing eastward towards Florida. At least a low-end tropical depression / storm will be in play towards the start of next week.

No impacts are favored for Houston at this time!

# Houston Pilots Tropical Update

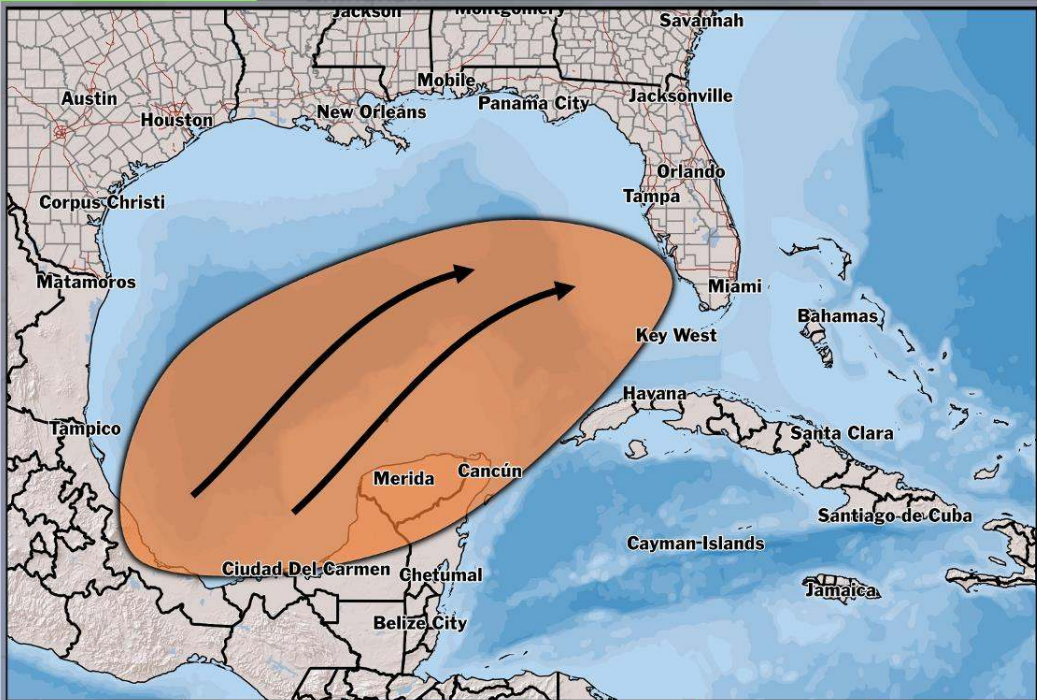


## Next Tropical Disturbance

TROPICAL INSIGHT

9 PM ET Thursday, October 3, 2024

Forecaster: Kemper



Formation Chances	0 - 20%	20%-40%	40%-60%	60%-80%	80% - 100%
-------------------	---------	---------	---------	---------	------------

**TIMING:** ~Oct 8th – 10th

### FORECAST NOTES:

- ✓ (UPDATED) Slow development of tropical system favored after / on the 8<sup>th</sup>.
- ✓ Regardless of development, heavy rain favored for FL
- ✓ TX/LA/MS/AL impacts not favored.



# Houston Pilots Visibility Chart (miles)



## Forecast Confidence



Visibility	Fri 12 pm	Fri 1 pm	Fri 2 pm	Fri 3 pm	Fri 4 pm	Fri 5 pm	Fri 6 pm	Fri 7 pm	Fri 8 pm	Fri 9 pm	Fri 10 pm	Fri 11 pm	Sat 12 am	Sat 1 am	Sat 2 am	Sat 3 am	Sat 4 am	Sat 5 am	Sat 6 am	Sat 7 am	Sat 8 am	Sat 9 am	Sat 10 am	Sat 11 am	
Houston Pilots N - 610 Bridge	10	10	10	10	10	10	10	10	10	10	10	10	10	10	10	10	10	10	10	10	10	10	7.9	10	10
Houston Pilots M - Kinder 1	10	10	10	10	10	10	10	10	10	10	10	10	10	10	10	10	10	10	10	10	10	10	7.9	10	10
Houston Pilots L - Greens Bayou	10	10	10	10	10	10	10	10	10	10	10	10	10	10	10	10	10	10	10	10	10	10	6.9	10	10
Houston Pilots K - Shell Crude	10	10	10	10	10	10	10	10	10	10	10	10	10	10	10	10	10	10	10	10	10	10	6.9	10	10
Houston Pilots J - Lynchburg Ferries	10	10	10	10	10	10	10	10	10	10	10	10	10	10	10	10	10	10	10	10	10	10	6.9	10	10
Houston Pilots I - Exxon 3	10	10	10	10	10	10	10	10	10	10	10	10	10	10	10	10	10	10	10	10	10	10	6.9	10	10
Houston Pilots H - Morgans Point	10	10	10	10	10	10	10	10	10	10	10	10	10	10	10	10	10	10	10	10	10	10	7.9	10	10
Houston Pilots G - 75/76	10	10	10	10	10	10	10	10	10	10	10	10	10	10	10	10	10	10	10	10	10	10	10	10	9
Houston Pilots F - 63/64	10	10	10	10	10	10	10	10	10	10	10	10	10	10	10	10	10	10	10	10	10	10	10	10	9
Houston Pilots E - 51/52	10	10	10	10	10	10	10	10	10	10	10	10	10	10	10	10	10	10	10	10	10	10	10	10	9
Houston Pilots D - 37/38	10	10	10	10	10	10	10	10	10	10	10	10	10	10	10	10	10	10	10	10	10	10	10	10	9
Houston Pilots C - 25/26	10	10	10	10	10	10	10	10	10	10	10	10	10	10	10	10	10	10	10	10	10	10	10	10	9
Houston Pilots B - 11/12	10	10	10	10	10	10	10	10	10	10	10	10	10	10	10	10	10	10	10	10	10	10	10	10	9
Houston Pilots A - 1 & 2 Bravo	10	10	10	10	10	10	10	10	10	10	10	10	10	10	10	10	10	10	10	10	10	10	10	10	9

**NOTE: This is automated data that may/may not agree with the official BAM thinking that's found on the daily slides or special visibility report slides. This data should be used as a guide only**

# Houston Pilots Wind Chart



## Forecast Confidence



Sustained wind 10 Knots  
Gusts 15 Knots  
Wind from the SE

Example

10  
15  
↙

Wind	Fri 12 pm	Fri 1 pm	Fri 2 pm	Fri 3 pm	Fri 4 pm	Fri 5 pm	Fri 6 pm	Fri 7 pm	Fri 8 pm	Fri 9 pm	Fri 10 pm	Fri 11 pm	Sat 12 am	Sat 1 am	Sat 2 am	Sat 3 am	Sat 4 am	Sat 5 am	Sat 6 am	Sat 7 am	Sat 8 am	Sat 9 am	Sat 10 am	Sat 11 am
Houston Pilots N - 610 Bridge	10 22 ↙	10 22 ↙	10 22 ↙	12 23 ↙	10 22 ↙	10 22 ↙	10 20 ↙	9 18 ↙	8 16 ↙	8 15 ↙	7 14 ↙	6 13 ↙	6 12 ↙	6 12 ↙	6 12 ↙	6 12 ↙	6 13 ↙	6 13 ↙	7 14 ↙	7 15 ↙	8 15 ↙	8 15 ↙	8 16 ↙	9 17 ↙
Houston Pilots M - Kinder 1	10 22 ↙	10 22 ↙	10 22 ↙	12 23 ↙	12 22 ↙	10 22 ↙	10 20 ↙	9 18 ↙	8 16 ↙	8 15 ↙	7 14 ↙	6 13 ↙	6 12 ↙	6 12 ↙	6 12 ↙	6 12 ↙	6 13 ↙	6 13 ↙	7 14 ↙	7 15 ↙	8 15 ↙	8 15 ↙	8 16 ↙	9 17 ↙
Houston Pilots L - Greens Bayou	10 21 ↙	10 21 ↙	10 22 ↙	12 22 ↙	12 22 ↙	10 21 ↙	10 18 ↙	9 18 ↙	8 16 ↙	7 15 ↙	6 14 ↙	6 13 ↙	6 12 ↙	6 12 ↙	6 12 ↙	6 12 ↙	6 13 ↙	6 14 ↙	6 14 ↙	7 15 ↙	8 15 ↙	8 15 ↙	8 17 ↙	8 17 ↙
Houston Pilots K - Shell Crude	10 21 ↙	10 21 ↙	10 22 ↙	12 22 ↙	10 22 ↙	10 21 ↙	10 18 ↙	9 17 ↙	8 15 ↙	7 15 ↙	6 14 ↙	6 13 ↙	6 13 ↙	6 12 ↙	6 12 ↙	6 12 ↙	6 13 ↙	6 14 ↙	6 14 ↙	7 15 ↙	7 15 ↙	8 16 ↙	8 16 ↙	8 17 ↙
Houston Pilots J - Lynchburg Ferries	10 21 ↙	10 20 ↙	10 21 ↙	10 22 ↙	10 21 ↙	10 20 ↙	10 18 ↙	9 17 ↙	8 15 ↙	6 14 ↙	6 13 ↙	6 12 ↙	5 12 ↙	5 10 ↙	5 10 ↙	5 12 ↙	5 13 ↙	6 13 ↙	6 13 ↙	6 14 ↙	6 15 ↙	7 15 ↙	8 15 ↙	8 17 ↙
Houston Pilots I - Exxon 3	14 22 ↙	14 21 ↙	14 22 ↙	14 22 ↙	14 22 ↙	13 21 ↙	13 20 ↙	13 18 ↙	12 17 ↙	10 16 ↙	10 15 ↙	10 15 ↙	10 15 ↙	9 14 ↙	9 14 ↙	10 15 ↙	10 15 ↙	12 15 ↙	12 16 ↙	13 16 ↙	13 17 ↙	13 17 ↙	13 17 ↙	12 18 ↙
Houston Pilots H - Morgans Point	14 22 ↙	14 21 ↙	14 22 ↙	14 22 ↙	14 21 ↙	13 21 ↙	13 20 ↙	13 18 ↙	12 17 ↙	10 16 ↙	10 15 ↙	10 15 ↙	10 15 ↙	10 15 ↙	10 14 ↙	10 15 ↙	10 15 ↙	12 16 ↙	12 16 ↙	13 17 ↙	13 17 ↙	13 18 ↙	13 17 ↙	13 18 ↙
Houston Pilots G - 75/76	15 23 ↙	15 23 ↙	15 22 ↙	15 23 ↙	15 22 ↙	14 22 ↙	14 21 ↙	14 20 ↙	13 18 ↙	13 17 ↙	13 17 ↙	13 17 ↙	12 16 ↙	12 16 ↙	12 16 ↙	13 16 ↙	13 17 ↙	14 18 ↙	14 18 ↙	15 20 ↙	15 21 ↙	15 21 ↙	15 21 ↙	14 21 ↙
Houston Pilots F - 63/64	15 23 ↙	15 23 ↙	14 22 ↙	15 23 ↙	15 22 ↙	14 22 ↙	14 21 ↙	14 20 ↙	13 20 ↙	13 17 ↙	13 17 ↙	13 17 ↙	13 17 ↙	12 16 ↙	12 17 ↙	13 17 ↙	13 18 ↙	14 18 ↙	15 20 ↙	15 21 ↙	15 22 ↙	15 22 ↙	15 22 ↙	15 22 ↙
Houston Pilots E - 51/52	16 24 ↙	15 24 ↙	15 22 ↙	15 23 ↙	15 23 ↙	15 23 ↙	15 22 ↙	14 21 ↙	13 20 ↙	13 18 ↙	13 18 ↙	13 17 ↙	13 17 ↙	13 17 ↙	13 17 ↙	13 17 ↙	13 18 ↙	14 20 ↙	15 21 ↙	15 22 ↙	15 22 ↙	15 22 ↙	15 22 ↙	15 22 ↙
Houston Pilots D - 37/38	16 24 ↙	15 24 ↙	15 22 ↙	15 23 ↙	15 23 ↙	15 23 ↙	15 22 ↙	14 21 ↙	14 20 ↙	13 18 ↙	13 18 ↙	13 18 ↙	13 17 ↙	13 17 ↙	12 17 ↙	13 17 ↙	13 18 ↙	14 20 ↙	15 21 ↙	15 22 ↙	15 22 ↙	15 22 ↙	15 22 ↙	15 22 ↙
Houston Pilots C - 25/26	16 24 ↙	15 24 ↙	15 23 ↙	15 23 ↙	15 23 ↙	15 23 ↙	14 22 ↙	14 21 ↙	13 20 ↙	13 20 ↙	13 20 ↙	13 18 ↙	13 18 ↙	12 17 ↙	12 17 ↙	13 17 ↙	13 18 ↙	13 20 ↙	14 21 ↙	15 22 ↙	15 22 ↙	15 22 ↙	15 22 ↙	15 22 ↙
Houston Pilots B - 11/12	15 23 ↙	15 24 ↙	15 23 ↙	15 24 ↙	15 23 ↙	14 22 ↙	13 21 ↙	13 20 ↙	13 18 ↙	12 18 ↙	12 18 ↙	12 18 ↙	10 17 ↙	10 17 ↙	10 17 ↙	10 17 ↙	10 18 ↙	12 20 ↙	12 21 ↙	13 21 ↙	13 22 ↙	13 22 ↙	14 22 ↙	14 22 ↙
Houston Pilots A - 1 & 2 Bravo	17 25 ↙	17 26 ↙	16 24 ↙	16 24 ↙	15 24 ↙	15 24 ↙	15 23 ↙	15 22 ↙	14 21 ↙	15 21 ↙	14 21 ↙	14 21 ↙	14 21 ↙	13 20 ↙	13 18 ↙	14 20 ↙	14 21 ↙	15 21 ↙	15 23 ↙	16 23 ↙	16 24 ↙	16 24 ↙	17 24 ↙	16 23 ↙

NOTE: This is automated data that may/may not agree with the official BAM thinking that's found on the daily slides. This data should be used as a guide only.

# Houston Pilots: FRI. 10/4/2024



## Forecast Discussion

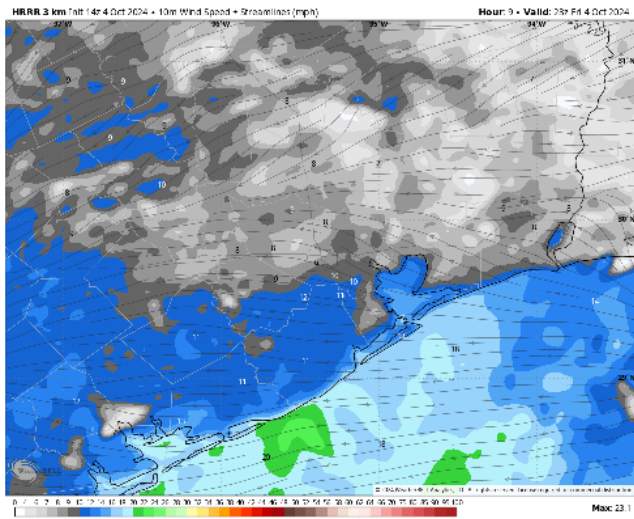
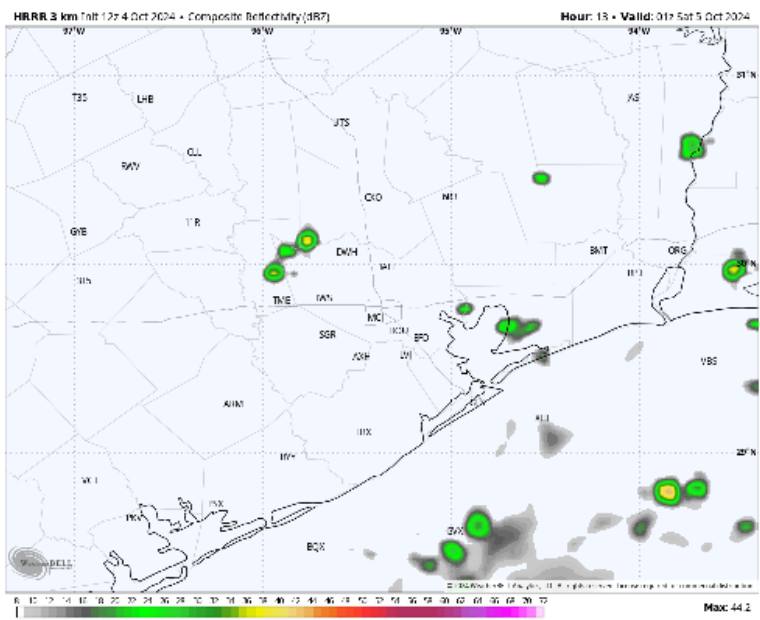
**Precip:** Isolated showers (20%) will be possible throughout the evening until 11 PM.

**Wind:** Winds will start out of the ENE through the evening  
**N of Morgan's Point:** Winds will be at 3 – 9 kts  
**S of Morgan's Point:** Winds will be at 9 – 15kts through the evening.

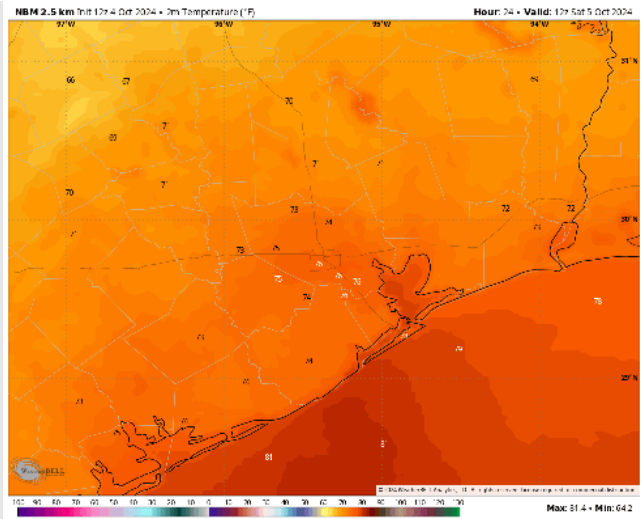
**Low Temps:** **N of Morgan's Point:** Mid 70s F. **S of Morgan's Point:** Upper 70s F.

**Visibility:** Not anticipating any visibility concerns for today.

## Precip Image: 8 PM CT



Wind Speed  
6 PM CT



Low Temps  
SAT AM

# Houston Pilots: SAT. 10/5/2024



## Forecast Discussion

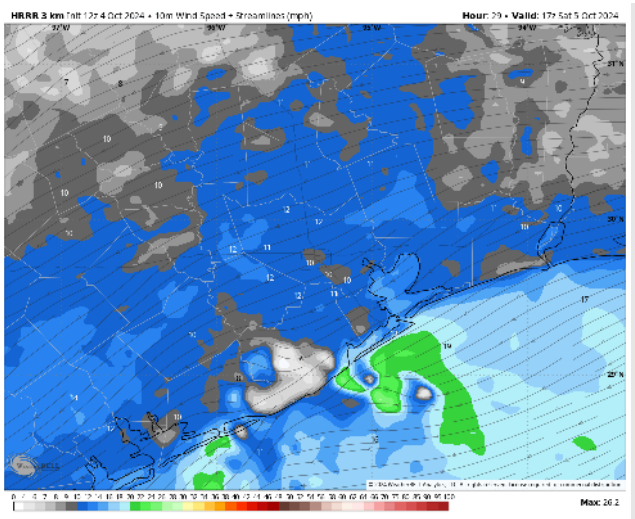
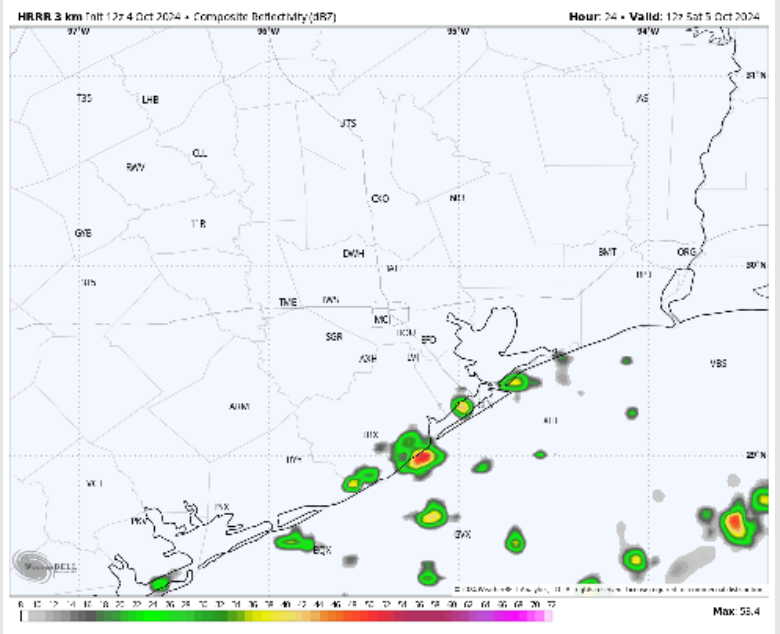
**Precip:** Isolated Showers (30%) will be possible S of Morgan's Point all throughout the day.

**Wind:** Winds will be out of the ENE for all of Saturday with gusts up to 20 kts at all stations. **N of Morgan's Point:** Winds will be at 3 – 9 kts for the entire day **S of Morgan's Point:** Winds will be at 8 – 14 kts for the entire day

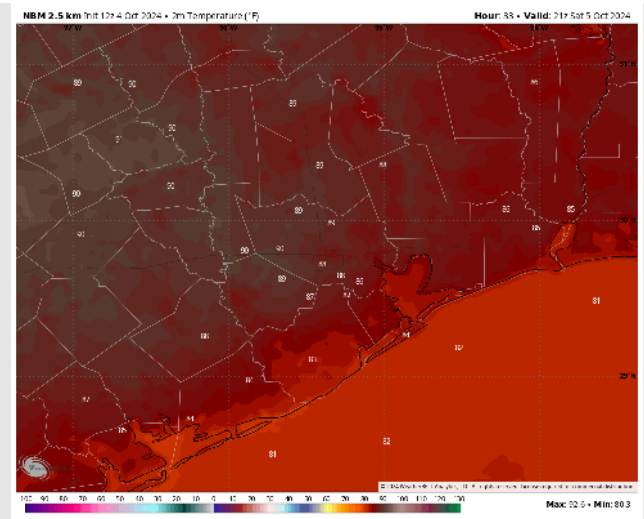
**High Temps:** **N of Morgan's Point:** Upper 80s F. **S of Morgan's Point:** Mid 80s F.

**Visibility:** Not favoring any fog concerns for Saturday.

## Precip Image: 7 AM CT



Wind Speed:  
12 PM CT



High Temps  
Saturday

# Houston Pilots: SUN. 10/6/2024



## Forecast Discussion

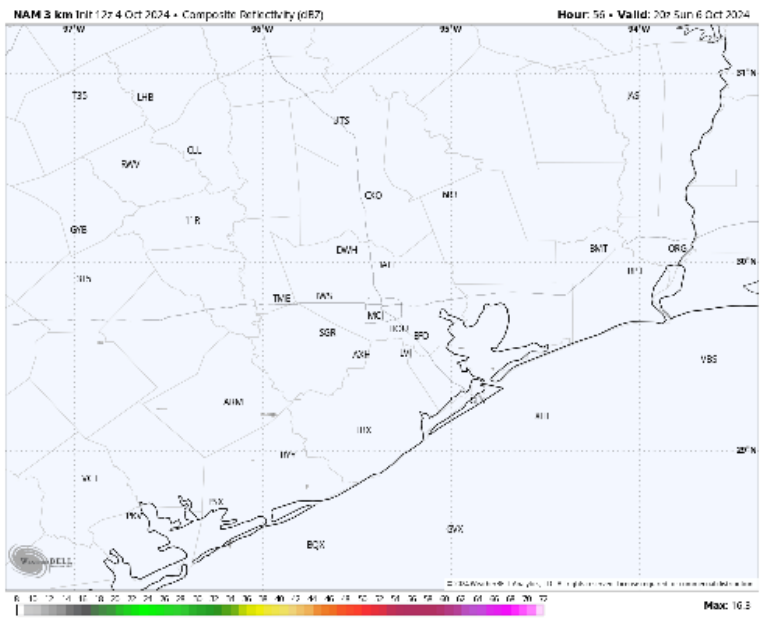
**Precip:** Favoring dry conditions for Sunday.

**Wind:** Winds will start out of the ENE throughout the day.  
**N of Morgan's Point:** Winds will be sustained at 4 – 10 kts for the entire day.  
**S of Morgan's Point:** Winds will be at 8 – 13 kts throughout the day on Sunday.

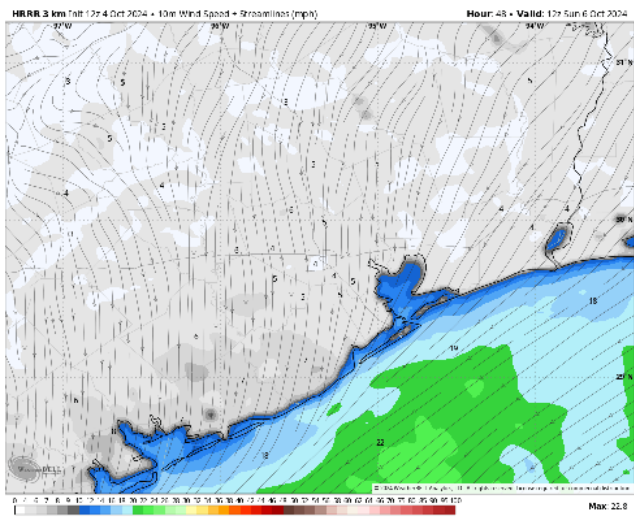
**High Temps:** **N of Morgan's Point:** Low 90's F. **S of Morgan's Point:** Mid to upper 80s F

**Visibility:** Not anticipating any visibility concerns for Sunday.

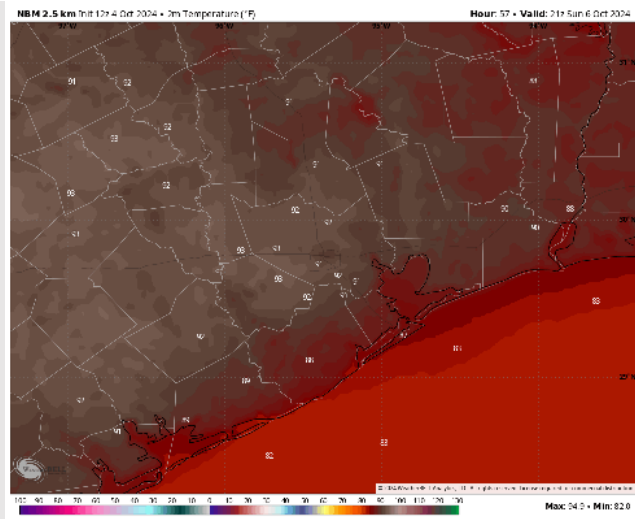
## Precip Image: 3 PM CT



Wind Speed:  
7 AM CT



High Temps  
Sunday

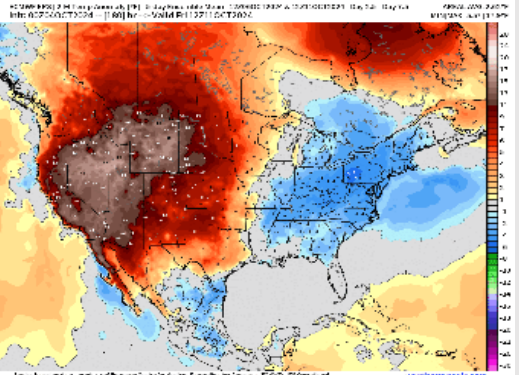




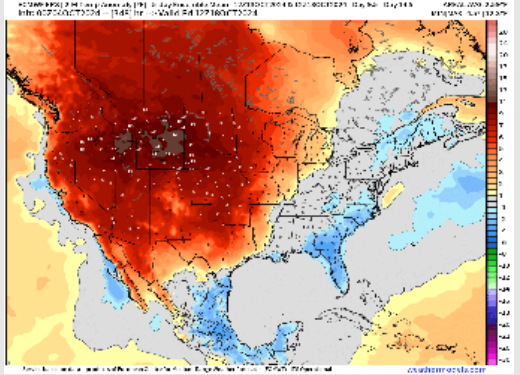
# Houston Pilots: 10/4/24



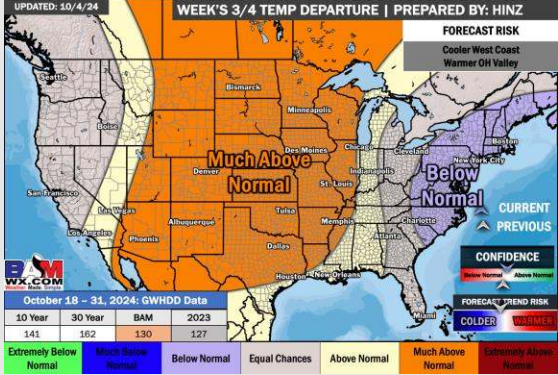
**Next 7 Day Temperature Departure**



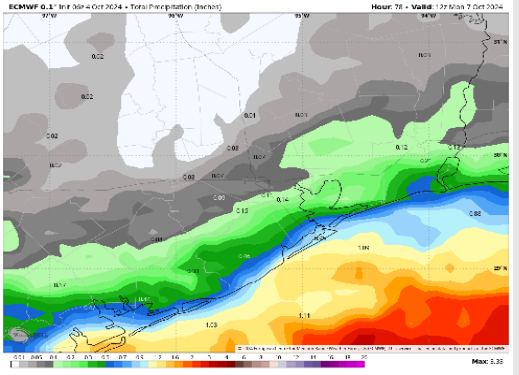
**8-14 Day Temperature Departure**



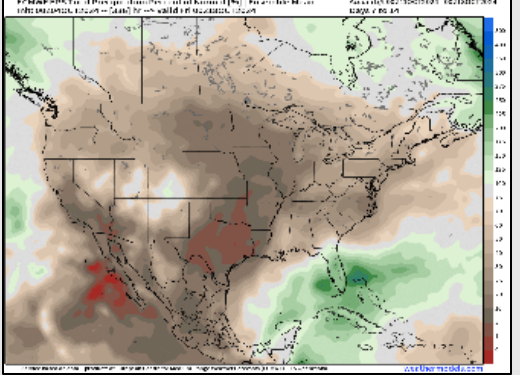
**15-30 Day Temperature Departure**



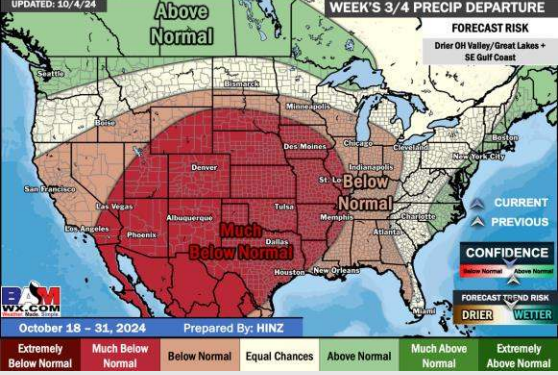
**Next 7 Day Total Precipitation**



**8-14 Day % of Average Precip.**



**15-30 Day % of Average Precip.**



- Temps are expected to be near normal for the week 1 timeframe. Favoring isolated rain chances on and off through week 1.
- Near normal temperatures are favored for week 2. Confidence is low on rain chances due to additional tropical risks for week 2.
- Near normal temperatures and much below normal precipitation chances are expected for the weeks 3/4 timeframe.