

# Houston Pilots Forecast Package



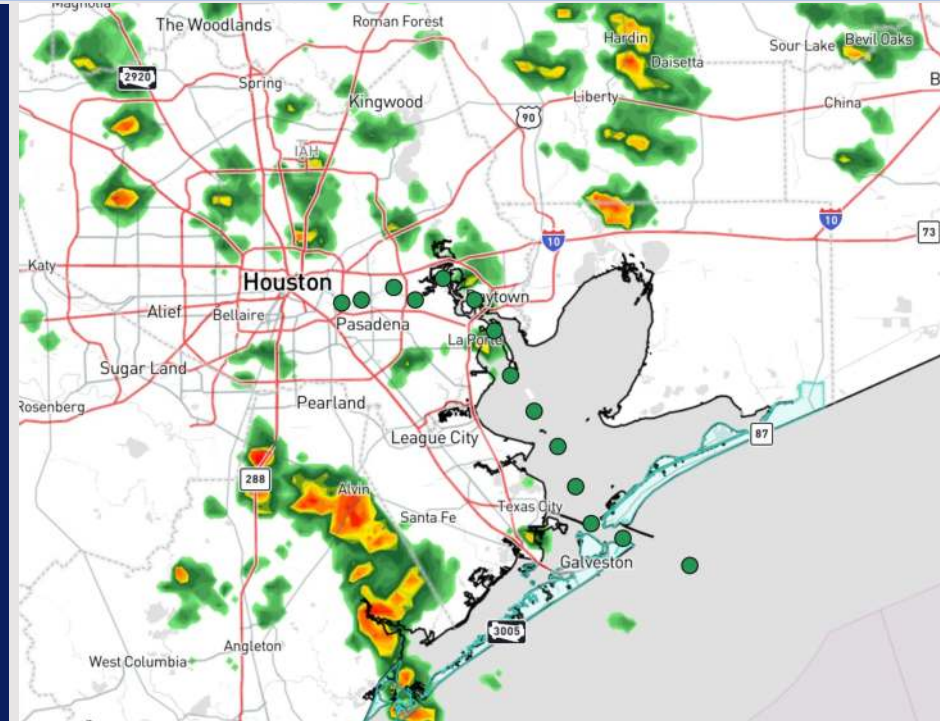
Updated: 1:30 PM CT

Wednesday, October 30, 2024

Forecaster: Alyssa Elliott

## Weather Headlines

- Wave heights currently at 3 - 4' for Boarding Station and 11/12 will be on the decrease through the PM and early THU AM. See wave heights slide for more info.
- Gusty winds of 20-30 kts expected through this evening.
- No tropical concerns for at least the next 7 days!

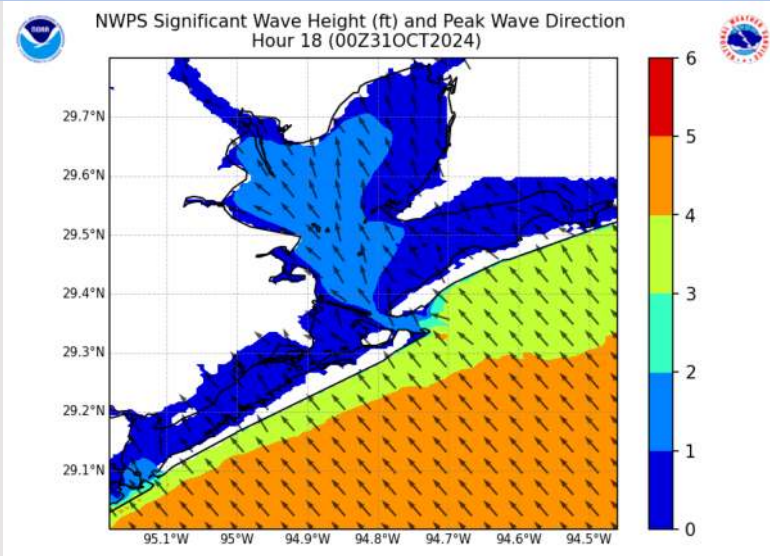


Current Radar: 1:00 PM CT



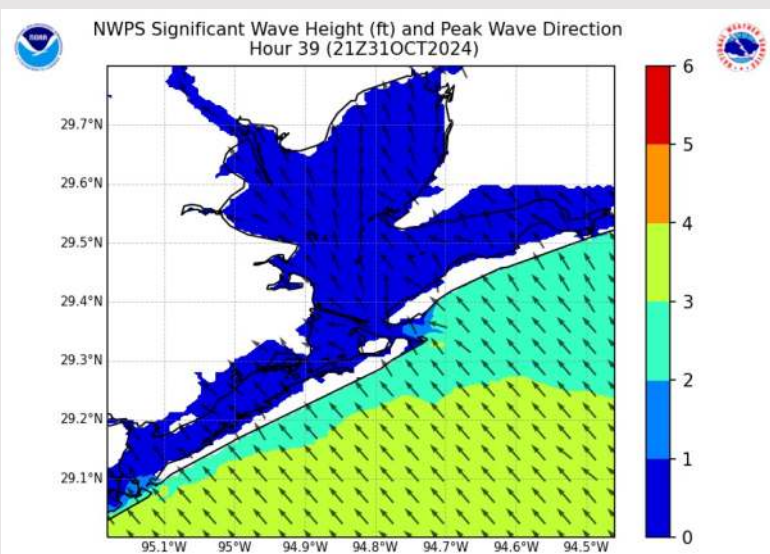
As always, please do not hesitate to reach out to us with any forecast questions via the chat option on Clarity or our on-call number, **(317)-560-8122** press **1** for forecast questions.

# Wave Height Forecast Update



7 PM CT WED

Wave heights currently sit at 3 – 4' at the Boarding Station and Station 11/12. Wave heights will continue to be on the decrease through the evening, dropping to 2 – 3' by ~10 AM THU.



4 PM CT THU

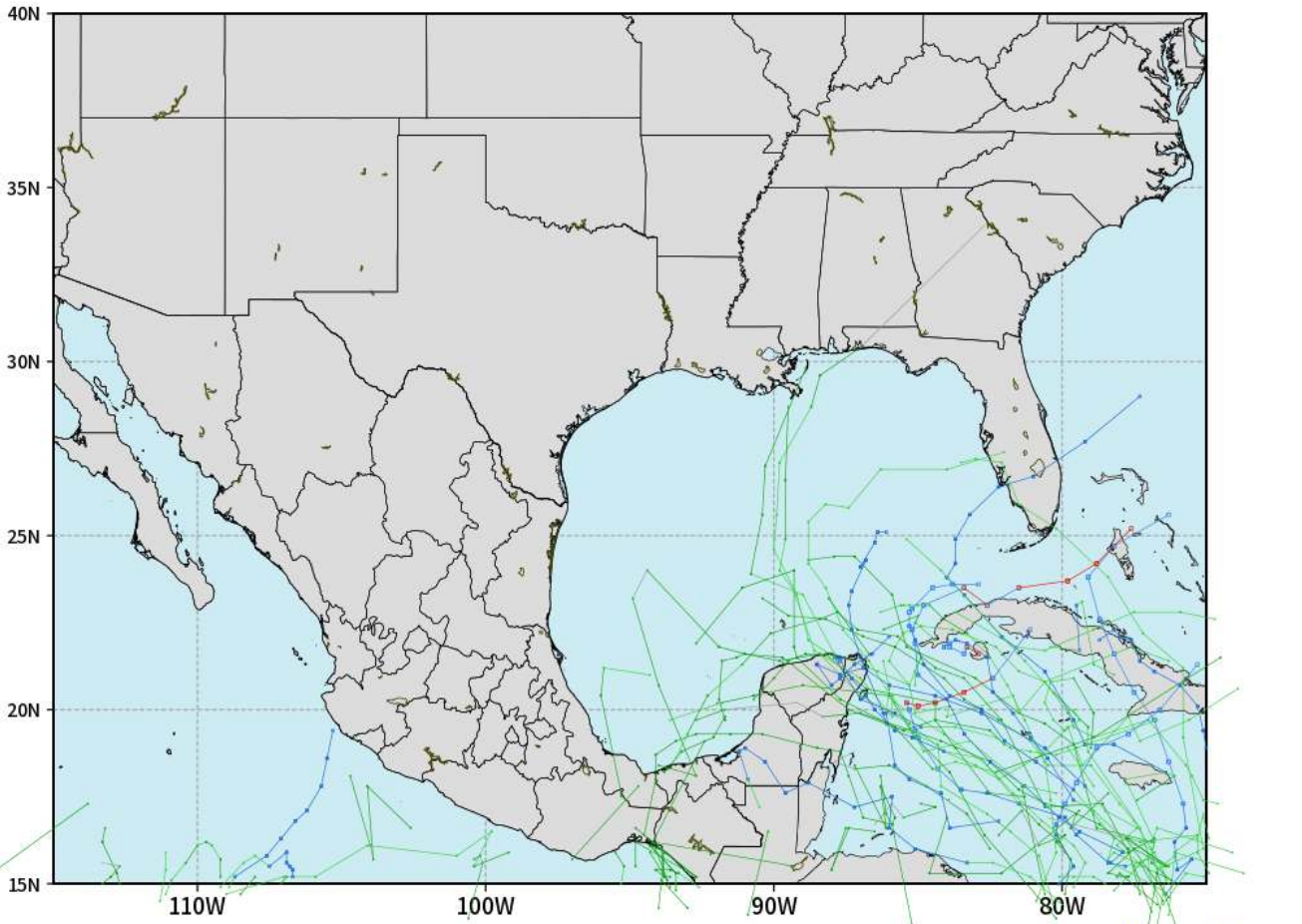
Waves heights at the Boarding Station will remain at the 2 – 3' mark until late Friday PM where they will then see another height increase.

# Houston Pilots Tropical Update

## European Tropical Tracks - Next 10 Days

ECMWF GULF EPS Cyclone Locations --> Next [10-days]  
INIT: 00Z30OCT2024 --> UNTIL 00Z09NOV2024

o-o ENSEMBLE MEAN  
o-o 1000 - 1010 hPa  
o-o 980 - 999 hPa  
o-o 960 - 979 hPa  
o-o 950 - 959 hPa  
o-o < 950 hPa



weathermodels.com

Currently favoring no threats for HOU over the next 7 days. We are monitoring increasing potential to start the month of November with potential formation in the Western Caribbean.

# Houston Pilots Visibility Chart (miles)



## Forecast Confidence



Visibility	Wed 2 pm	Wed 3 pm	Wed 4 pm	Wed 5 pm	Wed 6 pm	Wed 7 pm	Wed 8 pm	Wed 9 pm	Wed 10 pm	Wed 11 pm	Thu 12 am	Thu 1 am	Thu 2 am	Thu 3 am	Thu 4 am	Thu 5 am	Thu 6 am	Thu 7 am	Thu 8 am	Thu 9 am	Thu 10 am	Thu 11 am	Thu 12 pm	Thu 1 pm
Houston Pilots N - 610 Bridge	10	10	10	10	10	10	10	10	10	10	10	10	9	9	8	6.9	5.9	5.9	4.9	3.9	4.9	6.9	9	10
Houston Pilots M - Kinder 1	10	10	10	10	10	10	10	10	10	10	10	10	9	9	8	6.9	6.9	5.9	4.9	4.9	4.9	6.9	9	10
Houston Pilots L - Greens Bayou	10	10	10	10	10	10	10	10	10	10	10	10	9	9	8	6.9	6.9	5.9	4.9	4.9	4.9	6.9	10	10
Houston Pilots K - Shell Crude	10	10	10	10	10	10	10	10	10	10	10	10	9	9	8	6.9	6.9	5.9	4.9	4.9	4.9	6.9	10	10
Houston Pilots J - Lynchburg Ferries	10	10	10	10	10	10	10	10	10	10	10	10	9	9	8	6.9	6.9	5.9	4.9	4.9	4.9	6.9	10	10
Houston Pilots I - Exxon 3	10	10	10	10	10	10	10	10	10	10	10	10	9	9	8	6.9	6.9	5.9	5.9	4.9	4.9	6.9	10	10
Houston Pilots H - Morgans Point	10	10	10	10	10	10	10	10	10	10	10	10	9	9	8	6.9	6.9	5.9	5.9	4.9	4.9	6.9	10	10
Houston Pilots G - 75/76	9	10	10	10	9	9	10	10	10	9	8	9	8	6.9	6.9	6.9	6.9	6.9	6.9	5.9	5.9	6.9	7.9	8
Houston Pilots F - 63/64	9	10	9	10	9	9	10	10	10	9	8	8	8	6.9	6.9	6.9	6.9	6.9	6.9	5.9	5.9	6.9	7.9	8
Houston Pilots E - 51/52	9	10	9	10	9	6.9	10	10	10	9	8	8	8	6.9	6.9	6.9	7.9	6.9	6.9	6.9	6.9	6.9	7.9	6
Houston Pilots D - 37/38	9	10	9	10	9	7.9	10	10	10	9	8	8	8	8	8	6.9	7.9	8	9	6.9	6.9	6.9	7.9	6
Houston Pilots C - 25/26	10	10	9	10	9	9	10	10	10	9	9	9	8	8	8	6.9	7.9	9	10	7.9	6.9	6.9	9	6
Houston Pilots B - 11/12	9	10	9	10	9	9	10	9	10	9	9	9	8	8	8	8	9	10	10	9	7.9	6.9	9	7
Houston Pilots A - 1 & 2 Bravo	9	10	7.9	9	10	10	10	10	10	9	9	9	9	8	8	8	9	10	10	9	7.9	7.9	9	8

**NOTE: This is automated data that may/may not agree with the official BAM thinking that's found on the daily slides or special visibility report slides. This data should be used as a guide only**

# Houston Pilots Wind Chart



→ Sustained wind 10 Knots  
 → Gusts 15 Knots  
 → Wind from the SE

**Example**

10  
 15  
 ↙

Wind	Wed 2 pm	Wed 3 pm	Wed 4 pm	Wed 5 pm	Wed 6 pm	Wed 7 pm	Wed 8 pm	Wed 9 pm	Wed 10 pm	Wed 11 pm	Thu 12 am	Thu 1 am	Thu 2 am	Thu 3 am	Thu 4 am	Thu 5 am	Thu 6 am	Thu 7 am	Thu 8 am	Thu 9 am	Thu 10 am	Thu 11 am	Thu 12 pm	Thu 1 pm
Houston Pilots N - 610 Bridge	13 24 ↕	13 25 ↕	13 25 ↕	13 25 ↕	13 24 ↕	13 23 ↕	10 21 ↕	10 21 ↕	10 21 ↕	10 20 ↕	10 20 ↕	9 18 ↕	8 17 ↕	8 16 ↕	7 14 ↕	6 13 ↕	6 12 ↕	5 10 ↕	3 9 ↕	3 9 ↕	3 9 ↕	3 9 ↕	5 9 ↕	5 9 ↕
Houston Pilots M - Kinder 1	13 24 ↕	13 25 ↕	13 25 ↕	13 25 ↕	13 24 ↕	13 23 ↕	10 20 ↕	10 21 ↕	10 21 ↕	10 20 ↕	10 20 ↕	9 18 ↕	8 17 ↕	8 16 ↕	7 15 ↕	6 13 ↕	6 12 ↕	5 10 ↕	3 9 ↕	3 9 ↕	3 9 ↕	3 9 ↕	5 9 ↕	5 9 ↕
Houston Pilots L - Greens Bayou	13 24 ↕	13 26 ↕	13 25 ↕	13 25 ↕	13 23 ↕	12 22 ↕	10 20 ↕	10 20 ↕	10 21 ↕	10 20 ↕	10 20 ↕	9 20 ↕	8 18 ↕	8 16 ↕	7 15 ↕	6 14 ↕	6 12 ↕	5 10 ↕	3 9 ↕	3 9 ↕	3 9 ↕	3 9 ↕	5 9 ↕	5 9 ↕
Houston Pilots K - Shell Crude	13 24 ↕	13 26 ↕	13 25 ↕	13 25 ↕	13 23 ↕	12 22 ↕	10 20 ↕	10 20 ↕	10 21 ↕	10 20 ↕	10 20 ↕	9 20 ↕	8 18 ↕	8 17 ↕	7 15 ↕	6 14 ↕	6 12 ↕	5 10 ↕	3 9 ↕	3 9 ↕	3 9 ↕	3 9 ↕	5 9 ↕	5 9 ↕
Houston Pilots J - Lynchburg Ferries	13 24 ↕	14 26 ↕	14 25 ↕	13 24 ↕	13 23 ↕	13 22 ↕	10 20 ↕	10 21 ↕	10 21 ↕	10 21 ↕	10 21 ↕	8 20 ↕	8 18 ↕	7 17 ↕	6 15 ↕	6 14 ↕	5 12 ↕	5 10 ↕	3 9 ↕	3 9 ↕	3 9 ↕	3 9 ↕	3 9 ↕	3 9 ↕
Houston Pilots I - Exxon 3	16 24 ↕	16 25 ↕	15 24 ↕	15 24 ↕	15 23 ↕	15 22 ↕	14 21 ↕	15 21 ↕	15 22 ↕	15 22 ↕	15 22 ↕	15 21 ↕	14 21 ↕	13 20 ↕	12 17 ↕	10 16 ↕	9 14 ↕	8 13 ↕	7 10 ↕	6 10 ↕	6 9 ↕	6 9 ↕	6 10 ↕	6 10 ↕
Houston Pilots H - Morgans Point	15 23 ↕	16 24 ↕	15 23 ↕	15 23 ↕	15 22 ↕	15 22 ↕	14 21 ↕	15 21 ↕	15 22 ↕	15 22 ↕	15 22 ↕	15 21 ↕	14 21 ↕	13 20 ↕	12 17 ↕	10 16 ↕	9 14 ↕	8 13 ↕	7 10 ↕	6 10 ↕	6 9 ↕	6 9 ↕	6 10 ↕	6 10 ↕
Houston Pilots G - 75/76	15 24 ↕	16 25 ↕	16 24 ↕	15 24 ↕	15 24 ↕	15 23 ↕	15 22 ↕	15 22 ↕	15 23 ↕	15 23 ↕	16 24 ↕	16 23 ↕	15 22 ↕	15 21 ↕	13 20 ↕	13 18 ↕	10 17 ↕	10 15 ↕	8 13 ↕	8 12 ↕	8 12 ↕	7 12 ↕	6 12 ↕	6 12 ↕
Houston Pilots F - 63/64	15 24 ↕	15 25 ↕	16 24 ↕	15 24 ↕	15 24 ↕	15 23 ↕	14 21 ↕	15 22 ↕	15 23 ↕	15 23 ↕	16 23 ↕	15 22 ↕	15 22 ↕	15 21 ↕	13 20 ↕	13 18 ↕	10 17 ↕	10 15 ↕	9 14 ↕	8 13 ↕	8 12 ↕	7 12 ↕	6 12 ↕	6 10 ↕
Houston Pilots E - 51/52	15 24 ↕	15 24 ↕	16 24 ↕	15 24 ↕	15 23 ↕	15 22 ↕	14 21 ↕	15 22 ↕	15 22 ↕	15 22 ↕	15 23 ↕	15 22 ↕	15 22 ↕	14 21 ↕	13 20 ↕	13 18 ↕	10 17 ↕	10 16 ↕	9 14 ↕	8 13 ↕	8 12 ↕	8 12 ↕	7 12 ↕	6 12 ↕
Houston Pilots D - 37/38	15 23 ↕	15 24 ↕	15 23 ↕	15 23 ↕	15 23 ↕	15 22 ↕	14 21 ↕	15 21 ↕	15 22 ↕	15 22 ↕	15 22 ↕	15 22 ↕	15 22 ↕	14 21 ↕	13 20 ↕	12 18 ↕	10 17 ↕	10 16 ↕	9 14 ↕	8 13 ↕	8 12 ↕	8 12 ↕	7 12 ↕	6 12 ↕
Houston Pilots C - 25/26	15 23 ↕	15 24 ↕	15 23 ↕	15 23 ↕	15 22 ↕	15 21 ↕	14 21 ↕	15 21 ↕	15 22 ↕	15 22 ↕	15 22 ↕	15 22 ↕	14 22 ↕	13 21 ↕	13 20 ↕	12 18 ↕	10 17 ↕	10 16 ↕	9 14 ↕	8 13 ↕	8 12 ↕	8 12 ↕	7 12 ↕	6 12 ↕
Houston Pilots B - 11/12	13 22 ↕	14 23 ↕	14 22 ↕	14 22 ↕	13 22 ↕	13 21 ↕	13 20 ↕	13 21 ↕	13 21 ↕	13 21 ↕	13 21 ↕	13 22 ↕	13 22 ↕	12 22 ↕	10 20 ↕	10 18 ↕	10 17 ↕	9 16 ↕	8 15 ↕	8 14 ↕	8 13 ↕	8 12 ↕	7 12 ↕	7 12 ↕
Houston Pilots A - 1 & 2 Bravo	15 23 ↕	15 24 ↕	15 23 ↕	15 24 ↕	15 23 ↕	15 23 ↕	14 22 ↕	15 23 ↕	15 23 ↕	15 23 ↕	15 23 ↕	15 24 ↕	15 23 ↕	15 23 ↕	14 21 ↕	13 20 ↕	13 18 ↕	12 17 ↕	12 16 ↕	10 15 ↕	10 16 ↕	9 14 ↕	8 13 ↕	8 13 ↕

**NOTE:** This is automated data that may/may not agree with the official BAM thinking that's found on the daily slides. This data should be used as a guide only.

## Forecast Discussion

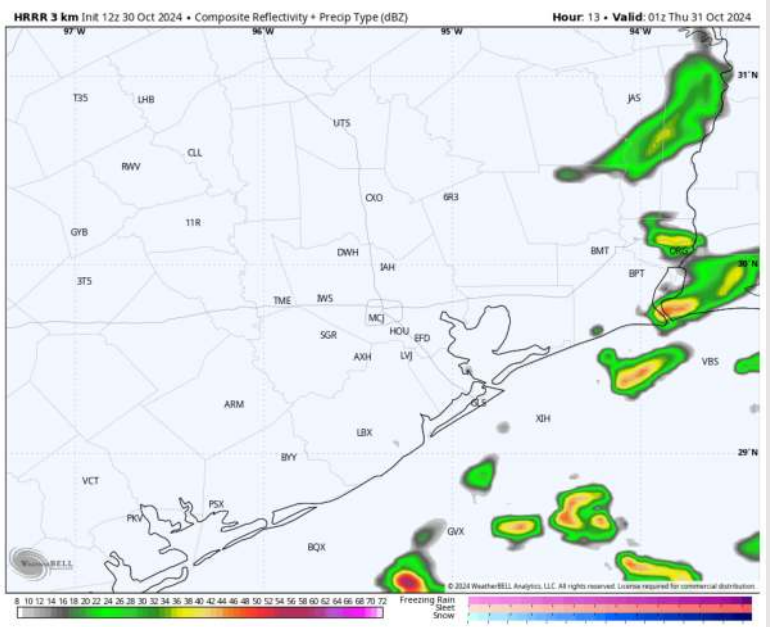
**Precip:** Favoring hit and miss shower chances to be around through 8 PM. After 8 PM, chances become isolated for the remainder of the evening.

**Wind:** Winds will be out of the SE throughout the day. **N of Morgan's Point:** Winds will be at 8 – 12 kts the rest of the day. **S of Morgan's Point:** Winds will be at 13 - 18 kts throughout the day. **Wind gusts of 20-25kts are in play for stations N of Morgan's Point through 7PM. Stations S of Morgan's Point will see gusts of 25-30 kts through the rest of the PM.**

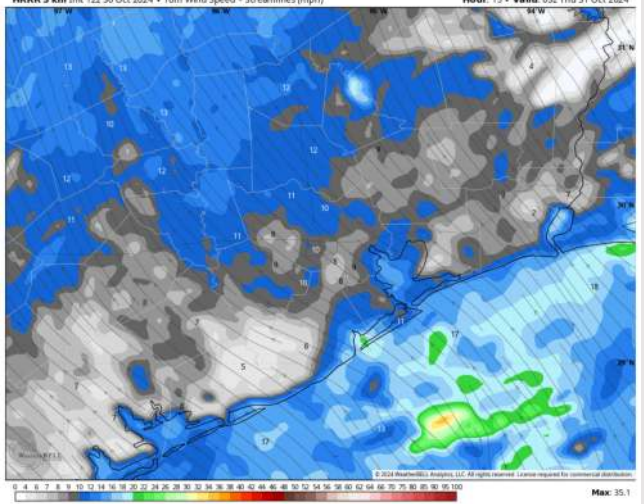
**Low Temps:** **N of Morgan's Point:** Mid 70s F. **S of Morgan's Point:** Upper 70s F.

**Visibility:** No visibility concerns for the rest of today.

## Precip Image: 8 PM CT

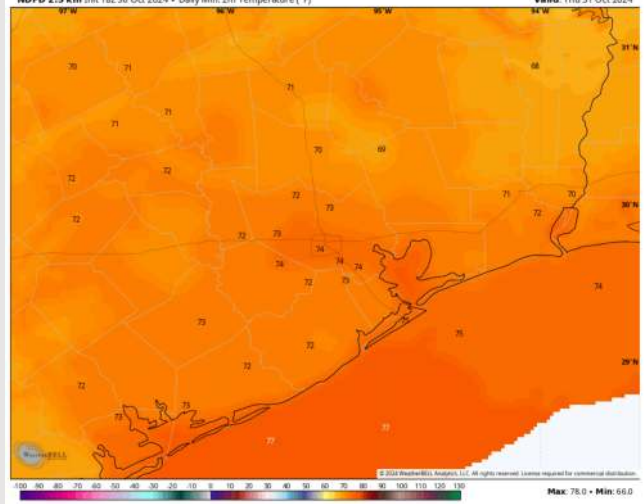


HRRR 3 km Init 12z 30 Oct 2024 • 10m Wind Speed • Streamlines (mph) Hour: 15 • Valid: 03z Thu 31 Oct 2024



Wind Speed:  
10 PM CT

NDFD 2.5 km Init 18z 30 Oct 2024 • Daily Min. 2m Temperature (°F) Valid: Thu 31 Oct 2024



Low Temps  
THU AM

# Houston Pilots: THU. 10/31/2024



## Forecast Discussion

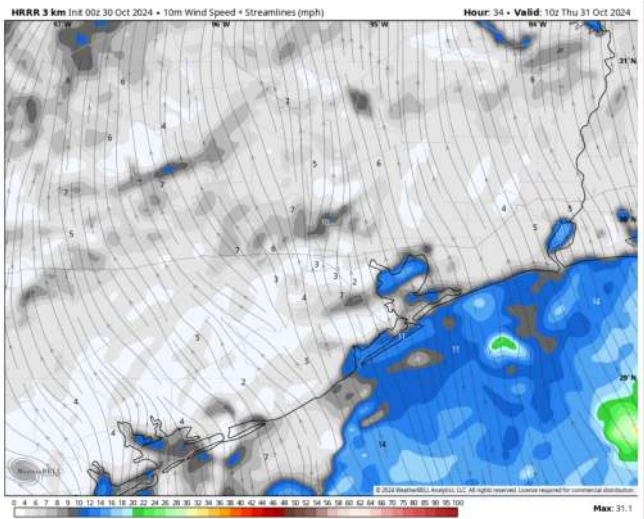
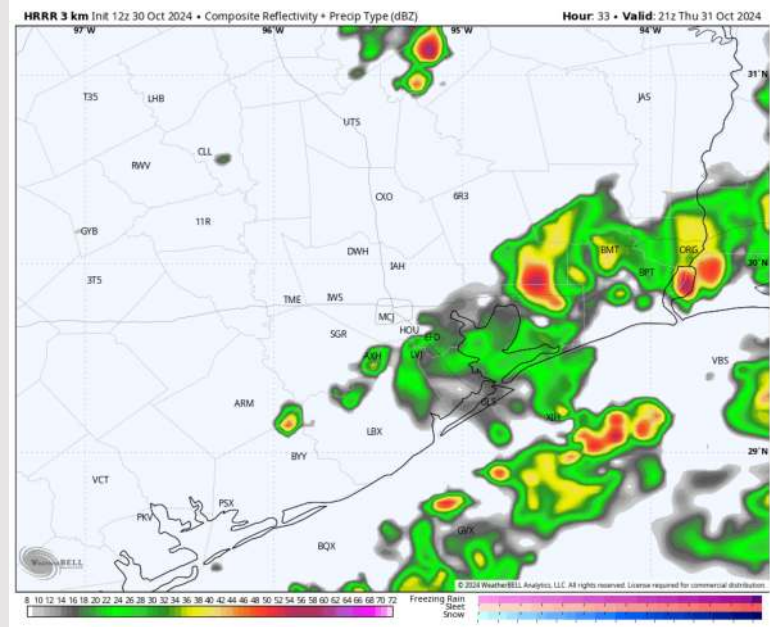
**Precip:** Favoring scattered showers to be in play for all stations (30%) between 3AM – 6PM.

**Wind:** Winds will be out of the SE through 4PM before veering out of the E / ESE. **N of Morgan's Point:** Winds will be at 3 – 7 kts for all of Thursday. **S of Morgan's Point:** Winds will be at 9 – 14 kts through 4PM before weakening to 3 – 7 kts. **Wind gusts of 20-25 kts will be possible for the Boarding Station and 11/12 through 4PM.**

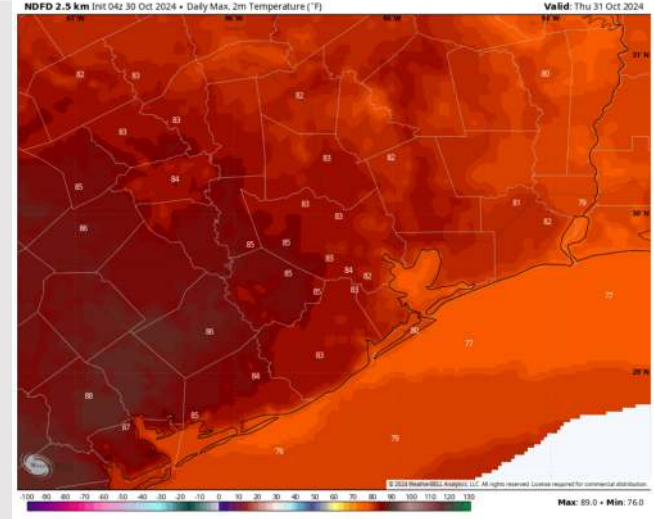
**High Temps:** **N of Morgan's Point:** Low to Mid 80s F. **S of Morgan's Point:** Near 80 F.

**Visibility:** Patchy fog may develop to the NW of Houston Metro however not favoring any impacts to the stations.

## Precip Image: 4 PM CT



Wind Speed  
5 AM CT



High Temps  
Thursday

# Houston Pilots: FRI. 11/1/2024



## Forecast Discussion

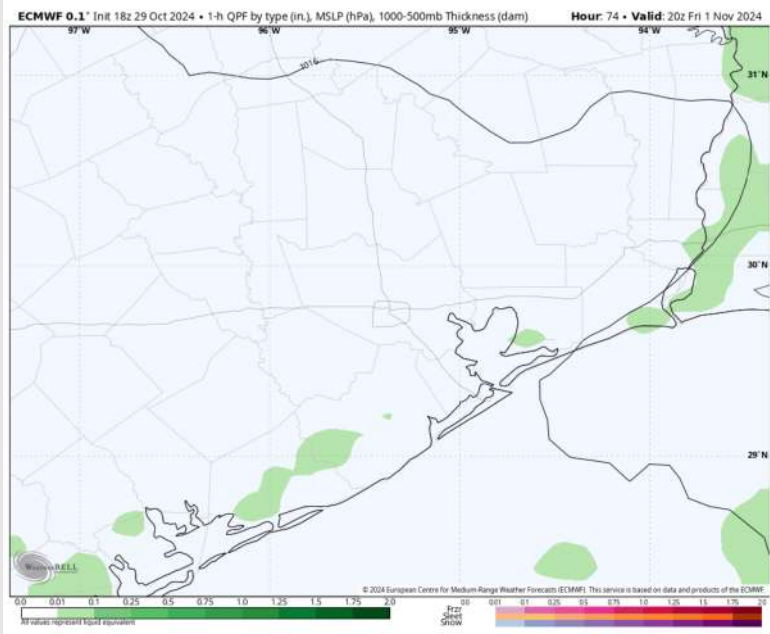
**Precip:** Favoring low end chances for a few, brief showers for stations S of Morgan's Point from 9AM – 4PM on Friday.

**Wind:** Winds will be out of the E throughout the day. **N of Morgan's Point:** Winds will be at 3 – 6 kts for Friday. **S of Morgan's Point:** Winds will be 10 – 15 kts throughout Friday.

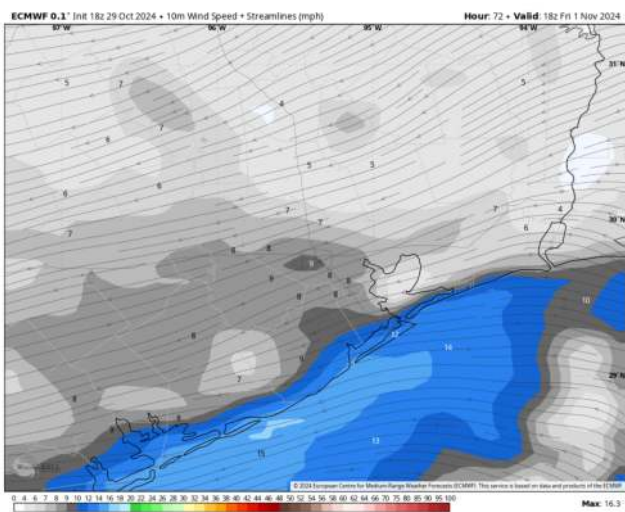
**High Temps:** **N of Morgan's Point:** Low 80s F. **S of Morgan's Point:** Upper 70s F.

**Visibility:** No visibility concerns for Friday.

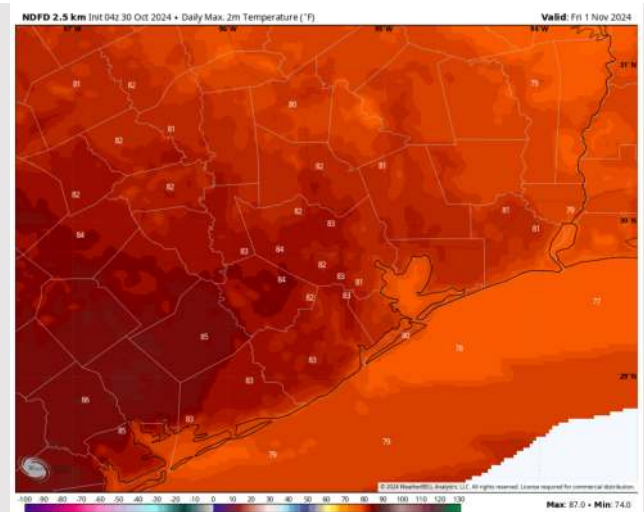
## Precip Image: 3 PM CT



Wind Speed:  
1 PM CT

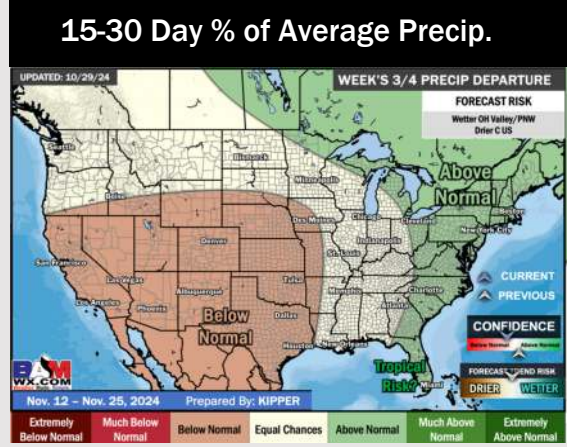
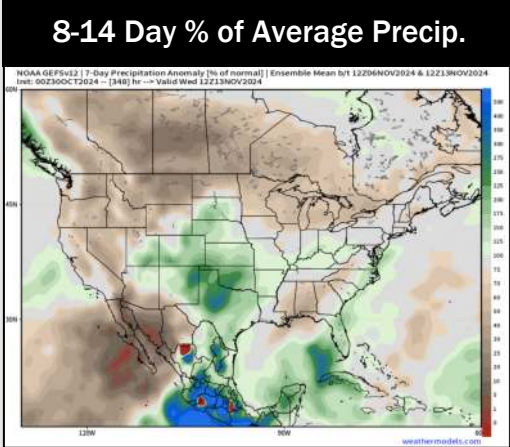
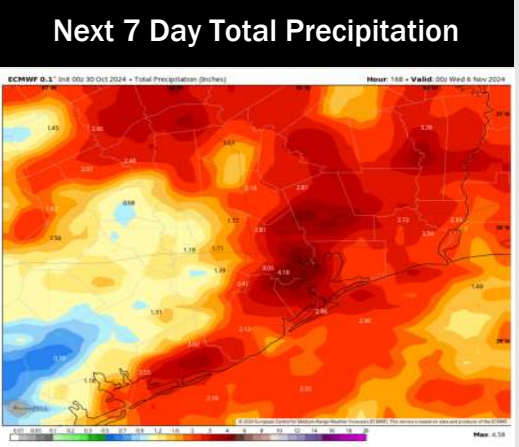
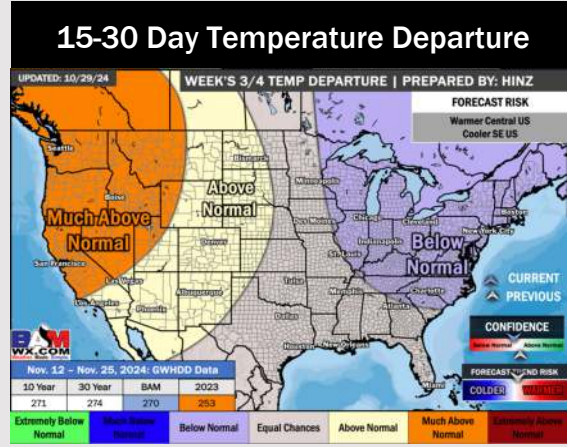
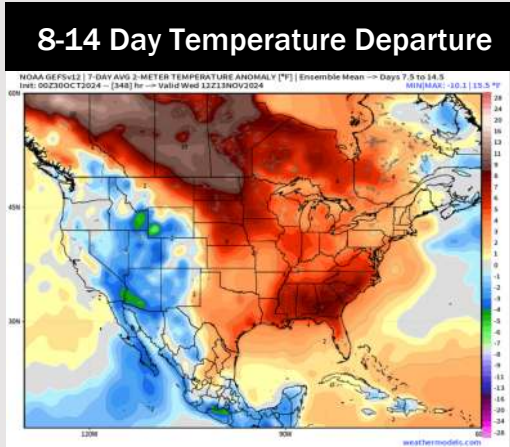
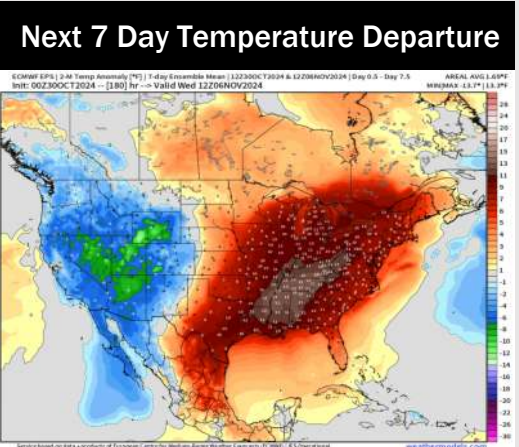


High Temps  
Friday





# Houston Pilots: 10/30/24



- Temps are expected to be above normal for the week 1 timeframe. Favoring scattered rain chances to continue late week.
- Above normal temperatures are favored for week 2. Favoring precipitation to be slightly below normal.
- Near normal temperatures and below normal precipitation chances are expected for the weeks 3/4 timeframe.