

Houston Pilots Forecast Package



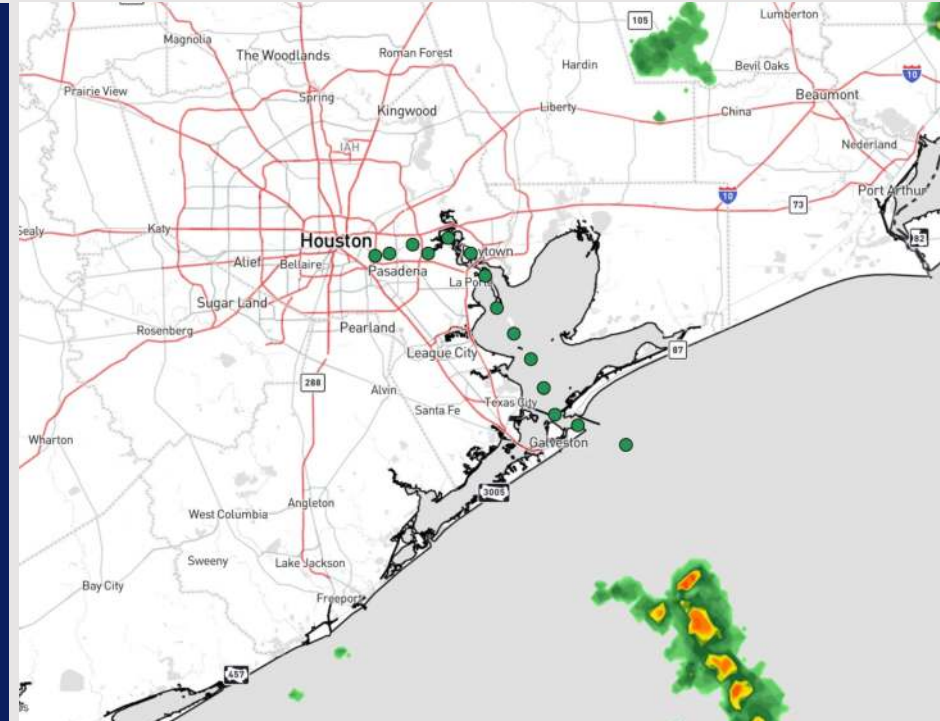
Updated: 12:15 AM CT

Wednesday, October 30, 2024

Forecaster: John Kemper

Weather Headlines

- Wave heights expected to slowly decrease to 3 - 4' later this AM into the early PM for Boarding Station and 11/12. See wave heights slide for more info.
- Gusty winds of 20-30 kts expected through this evening.
- No tropical concerns for at least the next 7 days!

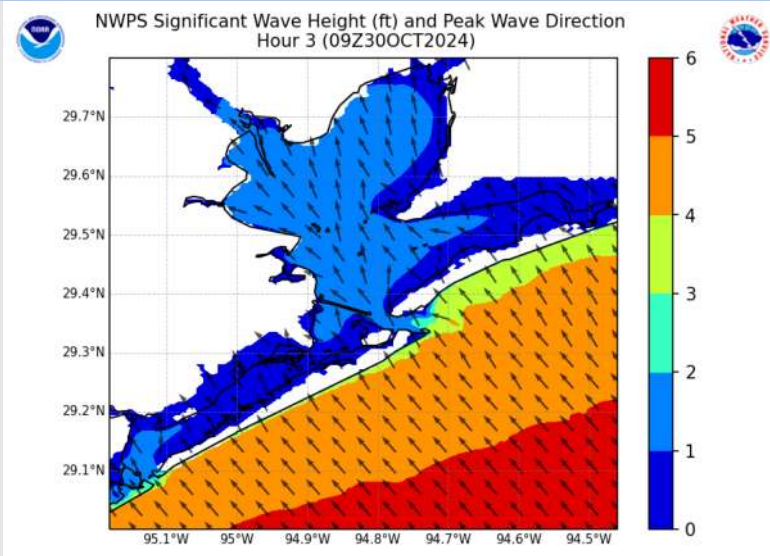


Current Radar: 12:10 AM CT



As always, please do not hesitate to reach out to us with any forecast questions via the chat option on Clarity or our on-call number, **(317)-560-8122** press **1** for forecast questions.

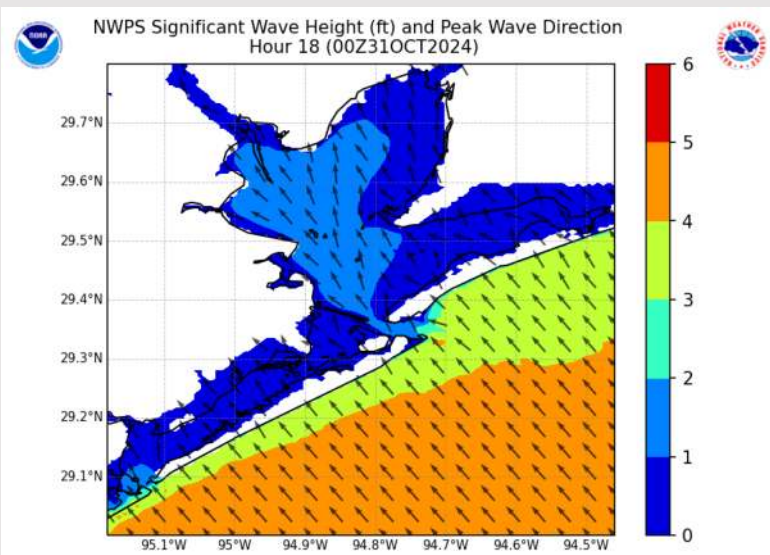
Wave Height Forecast Update



4 AM CT WED

Wave heights expected to continue to decrease for the Boarding Station and 11/12 throughout today (Wed). Max wave heights currently sit at 3 - 5'.

By 4 AM today (Wed), max wave heights will drop to 3' - 4', gradually decreasing to 2' - 4' by 7PM this evening (Wed)



7 PM CT WED

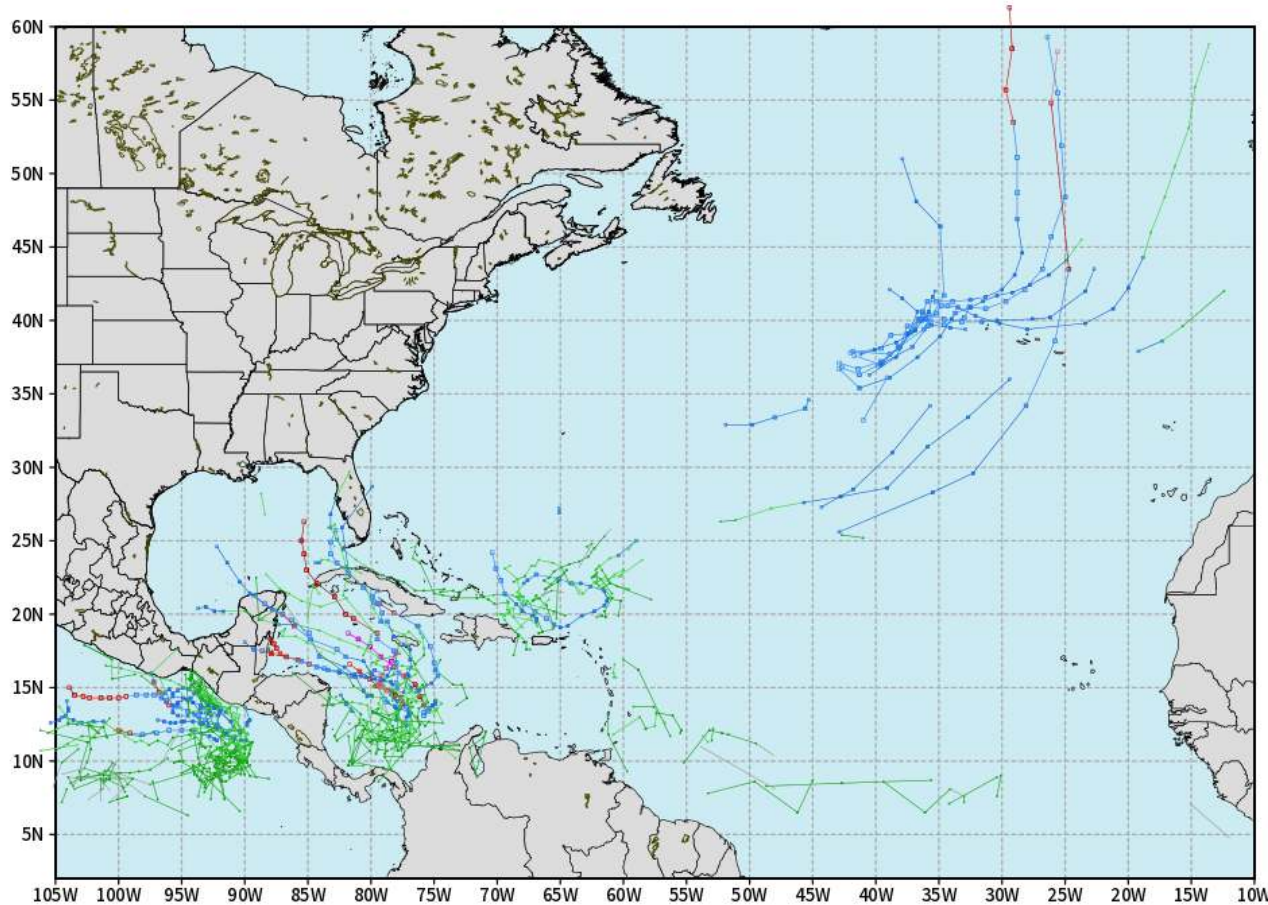
Not anticipating wave heights to drop to 2' or less until ~2 PM Thursday.

Houston Pilots Tropical Update

European Tropical Tracks - Next 10 Days

ECMWF ATLANTIC EPS Cyclone Locations --> Next [10-days]
INIT: 12Z29OCT2024 --> UNTIL 12Z08NOV2024

o-o ENSEMBLE MEAN
o-o 1000 - 1010 hPa
o-o 980 - 999 hPa
o-o 960 - 979 hPa
o-o 950 - 959 hPa
o-o < 950 hPa



weathermodels.com

Currently favoring no threats for HOU over the next 7 days. We are monitoring increasing potential to start the month of November with potential formation in the Western Caribbean.

Houston Pilots Visibility Chart (miles)



Forecast Confidence



Visibility	Wed 1 am	Wed 2 am	Wed 3 am	Wed 4 am	Wed 5 am	Wed 6 am	Wed 7 am	Wed 8 am	Wed 9 am	Wed 10 am	Wed 11 am	Wed 12 pm	Wed 1 pm	Wed 2 pm	Wed 3 pm	Wed 4 pm	Wed 5 pm	Wed 6 pm	Wed 7 pm	Wed 8 pm	Wed 9 pm	Wed 10 pm	Wed 11 pm	Thu 12 am
Houston Pilots N - 610 Bridge	10	10	10	10	10	10	10	10	9	10	10	10	10	10	10	10	10	10	10	10	10	10	10	10
Houston Pilots M - Kinder 1	10	10	10	10	10	10	10	10	10	10	10	10	10	10	10	10	10	10	10	10	10	10	10	10
Houston Pilots L - Greens Bayou	10	10	10	10	10	10	10	10	10	10	10	10	10	10	10	10	10	10	10	10	10	10	10	10
Houston Pilots K - Shell Crude	10	10	10	10	10	10	10	10	10	10	10	10	10	10	10	10	10	10	10	10	10	10	10	10
Houston Pilots J - Lynchburg Ferries	10	10	10	10	10	10	10	10	10	10	10	10	10	10	10	10	10	10	10	10	10	10	10	10
Houston Pilots I - Exxon 3	10	10	10	10	10	10	10	10	10	10	10	10	10	10	10	10	10	10	10	10	10	10	10	10
Houston Pilots H - Morgans Point	10	10	10	10	10	10	10	10	10	10	10	10	10	10	10	10	10	10	10	10	10	10	10	10
Houston Pilots G - 75/76	10	10	10	10	10	10	10	10	10	10	10	10	10	10	10	10	10	10	10	10	10	10	10	8
Houston Pilots F - 63/64	10	10	10	10	10	10	10	10	10	10	10	10	10	10	10	10	10	10	10	10	10	10	10	8
Houston Pilots E - 51/52	10	10	10	10	10	10	10	10	10	10	10	10	10	10	10	10	10	10	10	10	10	10	10	8
Houston Pilots D - 37/38	10	10	10	10	10	10	10	10	10	10	10	10	10	10	10	10	10	10	10	10	10	10	10	8
Houston Pilots C - 25/26	10	10	10	10	10	10	10	10	10	10	10	10	10	10	10	10	10	10	10	10	10	10	10	8
Houston Pilots B - 11/12	10	10	10	10	10	10	10	10	10	10	10	10	10	10	10	10	10	10	10	10	10	10	10	8
Houston Pilots A - 1 & 2 Bravo	10	10	10	10	10	10	10	10	10	10	10	10	10	10	10	10	10	10	10	10	10	9	9	8

NOTE: This is automated data that may/may not agree with the official BAM thinking that's found on the daily slides or special visibility report slides. This data should be used as a guide only

Houston Pilots Wind Chart



Sustained wind 10 Knots

Gusts 15 Knots

Wind from the SE

Example

10

15

↖

Wind	Wed 1 am	Wed 2 am	Wed 3 am	Wed 4 am	Wed 5 am	Wed 6 am	Wed 7 am	Wed 8 am	Wed 9 am	Wed 10 am	Wed 11 am	Wed 12 pm	Wed 1 pm	Wed 2 pm	Wed 3 pm	Wed 4 pm	Wed 5 pm	Wed 6 pm	Wed 7 pm	Wed 8 pm	Wed 9 pm	Wed 10 pm	Wed 11 pm	Thu 12 am
Houston Pilots N - 610 Bridge	13 25 ↖	13 25 ↖	13 24 ↖	12 23 ↖	10 21 ↖	10 20 ↖	10 18 ↖	9 17 ↖	10 18 ↖	10 20 ↖	10 20 ↖	12 22 ↖	12 23 ↖	12 23 ↖	13 24 ↖	13 24 ↖	13 24 ↖	13 24 ↖	12 23 ↖	10 20 ↖	10 20 ↖	9 20 ↖	9 18 ↖	8 17 ↖
Houston Pilots M - Kinder 1	13 25 ↖	13 25 ↖	13 24 ↖	12 23 ↖	10 21 ↖	10 20 ↖	10 18 ↖	9 17 ↖	10 18 ↖	10 20 ↖	10 20 ↖	12 22 ↖	13 23 ↖	12 23 ↖	13 24 ↖	13 25 ↖	13 24 ↖	13 23 ↖	12 22 ↖	10 20 ↖	10 20 ↖	9 20 ↖	9 18 ↖	8 17 ↖
Houston Pilots L - Greens Bayou	13 26 ↖	13 26 ↖	13 25 ↖	12 24 ↖	10 22 ↖	10 21 ↖	10 20 ↖	9 18 ↖	10 20 ↖	10 20 ↖	10 20 ↖	12 22 ↖	13 23 ↖	13 23 ↖	14 25 ↖	14 25 ↖	13 24 ↖	13 23 ↖	12 22 ↖	10 20 ↖	10 20 ↖	9 20 ↖	9 18 ↖	8 17 ↖
Houston Pilots K - Shell Crude	13 26 ↖	13 26 ↖	13 25 ↖	12 24 ↖	10 22 ↖	10 21 ↖	10 20 ↖	9 18 ↖	10 20 ↖	10 20 ↖	10 20 ↖	12 22 ↖	13 23 ↖	13 23 ↖	13 25 ↖	13 25 ↖	13 23 ↖	13 23 ↖	12 22 ↖	10 20 ↖	10 18 ↖	9 20 ↖	9 18 ↖	8 17 ↖
Houston Pilots J - Lynchburg Ferries	13 26 ↖	13 26 ↖	12 25 ↖	10 24 ↖	10 23 ↖	10 22 ↖	9 20 ↖	9 18 ↖	10 20 ↖	10 20 ↖	10 20 ↖	13 22 ↖	13 22 ↖	13 23 ↖	14 25 ↖	14 25 ↖	13 23 ↖	13 23 ↖	12 22 ↖	10 20 ↖	9 20 ↖	9 20 ↖	8 18 ↖	8 17 ↖
Houston Pilots I - Exxon 3	21 26 ↖	20 26 ↖	20 28 ↖	20 26 ↖	17 24 ↖	17 24 ↖	16 22 ↖	15 21 ↖	15 22 ↖	15 21 ↖	15 21 ↖	15 22 ↖	15 22 ↖	15 23 ↖	16 24 ↖	16 24 ↖	15 23 ↖	15 23 ↖	15 22 ↖	14 20 ↖	14 20 ↖	14 21 ↖	14 20 ↖	14 20 ↖
Houston Pilots H - Morgans Point	20 26 ↖	20 26 ↖	20 28 ↖	18 26 ↖	17 24 ↖	17 24 ↖	15 22 ↖	14 21 ↖	15 22 ↖	14 21 ↖	14 21 ↖	15 22 ↖	15 22 ↖	15 23 ↖	16 24 ↖	16 23 ↖	16 22 ↖	15 22 ↖	15 22 ↖	13 20 ↖	13 20 ↖	13 20 ↖	13 20 ↖	14 18 ↖
Houston Pilots G - 75/76	22 30 ↖	22 30 ↖	22 30 ↖	21 29 ↖	20 28 ↖	20 26 ↖	17 26 ↖	16 24 ↖	16 24 ↖	16 23 ↖	15 23 ↖	15 23 ↖	15 24 ↖	15 24 ↖	16 24 ↖	16 24 ↖	16 23 ↖	15 23 ↖	15 23 ↖	14 20 ↖	14 21 ↖	15 22 ↖	15 21 ↖	15 21 ↖
Houston Pilots F - 63/64	22 30 ↖	22 30 ↖	22 30 ↖	21 29 ↖	20 28 ↖	20 26 ↖	17 26 ↖	17 24 ↖	17 24 ↖	16 24 ↖	15 23 ↖	15 23 ↖	15 23 ↖	15 23 ↖	15 24 ↖	15 24 ↖	15 23 ↖	15 23 ↖	15 22 ↖	13 20 ↖	14 21 ↖	14 21 ↖	15 21 ↖	15 21 ↖
Houston Pilots E - 51/52	21 29 ↖	21 29 ↖	21 29 ↖	21 29 ↖	20 28 ↖	18 26 ↖	17 26 ↖	16 24 ↖	16 24 ↖	16 24 ↖	15 24 ↖	15 23 ↖	15 23 ↖	15 23 ↖	15 23 ↖	15 23 ↖	15 22 ↖	15 22 ↖	14 22 ↖	13 20 ↖	14 21 ↖	14 21 ↖	14 20 ↖	14 20 ↖
Houston Pilots D - 37/38	20 28 ↖	20 28 ↖	21 29 ↖	20 28 ↖	18 26 ↖	18 26 ↖	17 26 ↖	16 24 ↖	16 24 ↖	16 24 ↖	15 23 ↖	15 23 ↖	15 23 ↖	15 23 ↖	14 22 ↖	14 23 ↖	14 23 ↖	14 22 ↖	14 22 ↖	13 21 ↖	13 20 ↖	14 21 ↖	14 20 ↖	14 20 ↖
Houston Pilots C - 25/26	20 28 ↖	20 28 ↖	20 29 ↖	20 28 ↖	17 26 ↖	17 26 ↖	17 26 ↖	16 24 ↖	16 24 ↖	15 24 ↖	15 23 ↖	15 23 ↖	15 23 ↖	15 23 ↖	14 22 ↖	14 23 ↖	14 22 ↖	14 22 ↖	14 21 ↖	13 20 ↖	13 20 ↖	13 21 ↖	13 20 ↖	13 20 ↖
Houston Pilots B - 11/12	17 26 ↖	17 26 ↖	17 28 ↖	17 26 ↖	16 26 ↖	16 26 ↖	15 25 ↖	15 24 ↖	15 24 ↖	15 24 ↖	14 23 ↖	14 23 ↖	14 22 ↖	14 22 ↖	14 22 ↖	14 22 ↖	13 21 ↖	13 20 ↖	13 20 ↖	12 20 ↖	12 20 ↖	12 20 ↖	12 20 ↖	12 20 ↖
Houston Pilots A - 1 & 2 Bravo	20 29 ↖	20 29 ↖	20 30 ↖	20 29 ↖	20 29 ↖	18 28 ↖	17 26 ↖	17 26 ↖	17 26 ↖	16 24 ↖	15 24 ↖	15 23 ↖	15 23 ↖	14 23 ↖	14 23 ↖	14 23 ↖	14 22 ↖	14 22 ↖	14 22 ↖	14 21 ↖	14 21 ↖	14 22 ↖	15 22 ↖	15 22 ↖

NOTE: This is automated data that may/may not agree with the official BAM thinking that's found on the daily slides. This data should be used as a guide only.

Houston Pilots: WED. 10/30/2024



Forecast Discussion

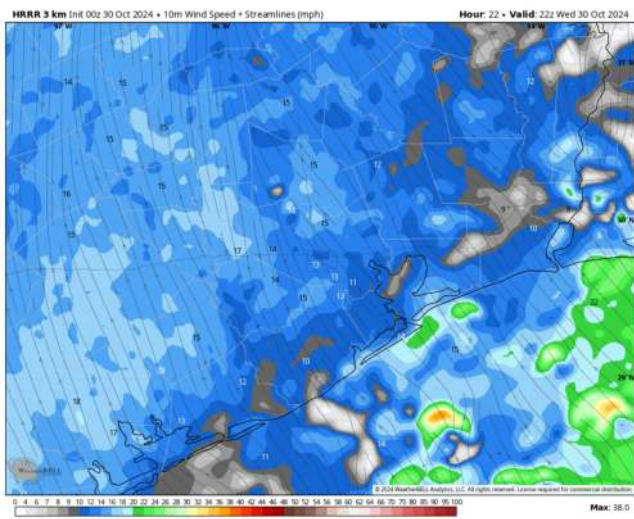
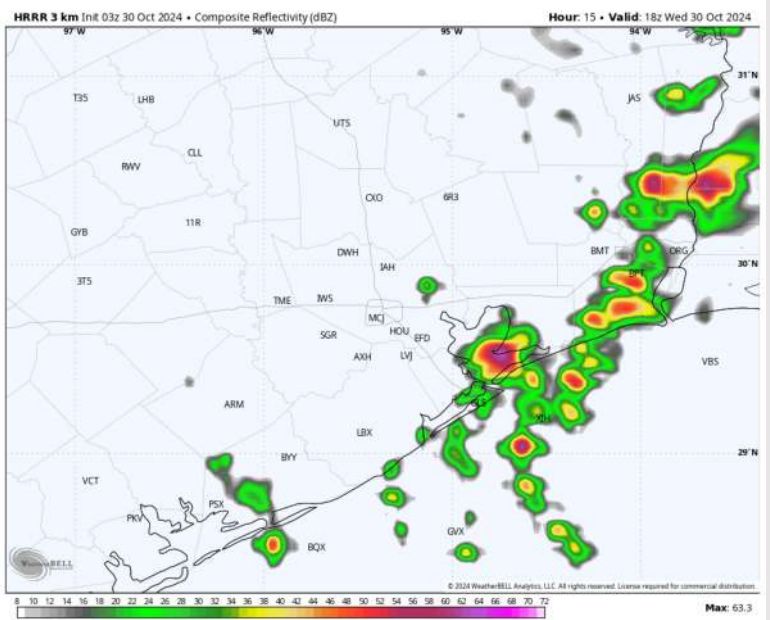
Precip: Favoring hit and miss shower chances to be around through the early AM with scattered coverage for showers and storms picking up after 7 AM and continuing until 7 PM. Highest coverage (50%) is anticipated from 12 PM to 5 PM.

Wind: Winds will be out of the SE throughout the day. **N of Morgan's Point:** Winds will start out at 4 - 7 kts, gradually increasing to 10 - 15 kts after 9AM and continue there throughout the day. **S of Morgan's Point:** Winds will be at 13 - 18 kts throughout the day. **Wind gusts of 25-30 kts will be in play for Stations S of Morgan's Point for the entire day, with gusts of 20-25kts in play for stations N of Morgan's Point from 11AM - 7PM.**

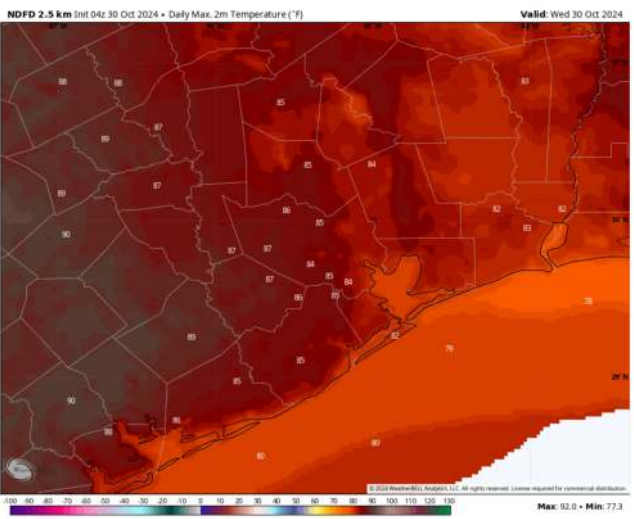
High Temps: **N of Morgan's Point:** Mid to upper 80s F. **S of Morgan's Point:** Upper 70s F to low 80s F.

Visibility: No visibility concerns for today.

Precip Image: 1 PM CT



Wind Speed:
5 PM CT



High Temps
Today

Houston Pilots: THU. 10/31/2024



Forecast Discussion

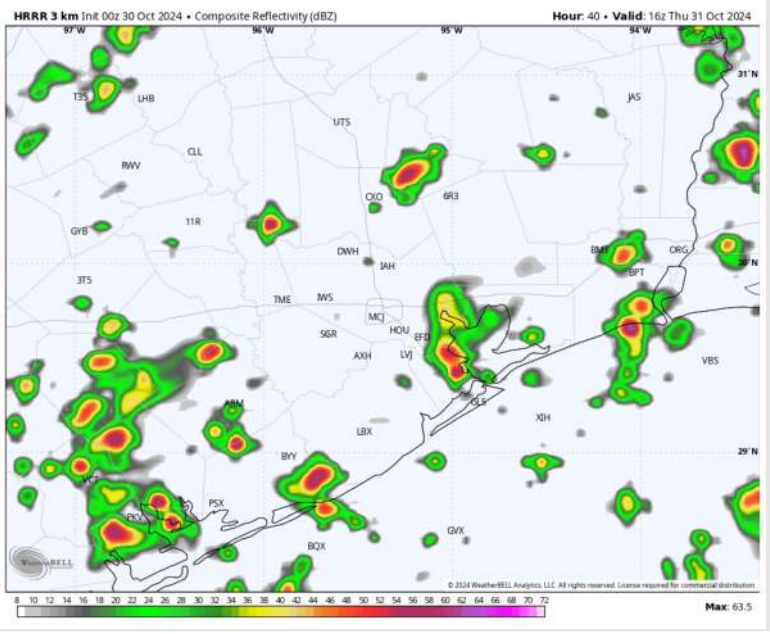
Precip: Favoring scattered showers to be in play for all stations (30%) between 3AM – 6PM.

Wind: Winds will be out of the SE through 4PM before veering out of the E / ESE. **N of Morgan's Point:** Winds will be at 3 – 7 kts for all of Thursday. **S of Morgan's Point:** Winds will be at 9 – 14 kts through 4PM before weakening to 3 – 7 kts. **Wind gusts of 20-25 kts will be possible for the Boarding Station and 11/12 through 4PM.**

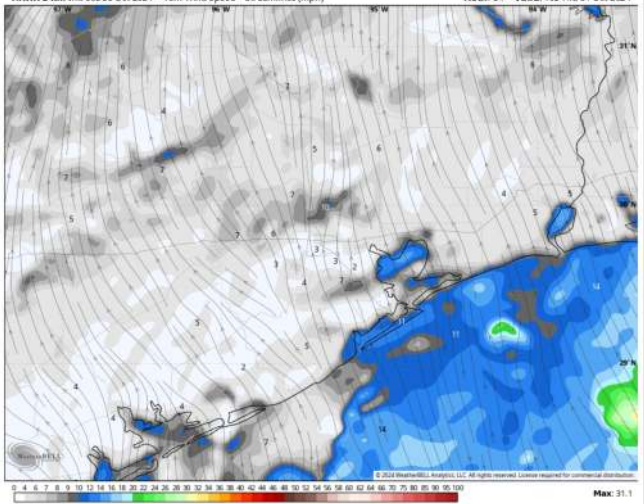
High Temps: **N of Morgan's Point:** Low to Mid 80s F. **S of Morgan's Point:** Near 80 F.

Visibility: No visibility concerns for Thursday.

Precip Image: 11 AM CT

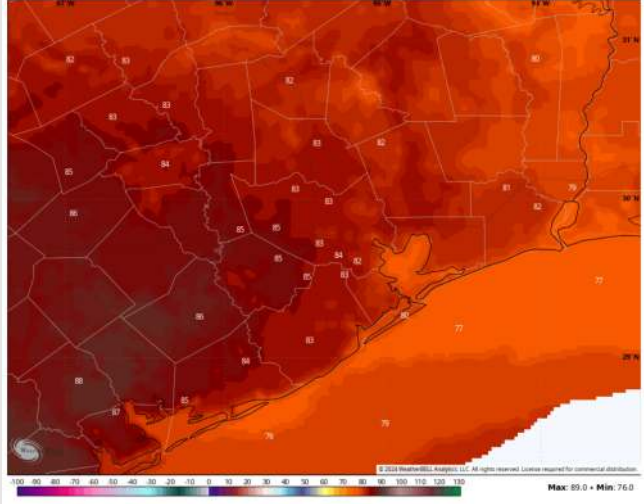


HRRR 3 km Init 00z 30 Oct 2024 • 10m Wind Speed + Streamlines (mph) Hour: 34 • Valid: 10z Thu 31 Oct 2024



Wind Speed
5 AM CT

NDFD 2.5 km Init 04z 30 Oct 2024 • Daily Max, 2m Temperature (°F) Valid: Thu 31 Oct 2024



High Temps
Thursday

Houston Pilots: FRI. 11/1/2024



Forecast Discussion

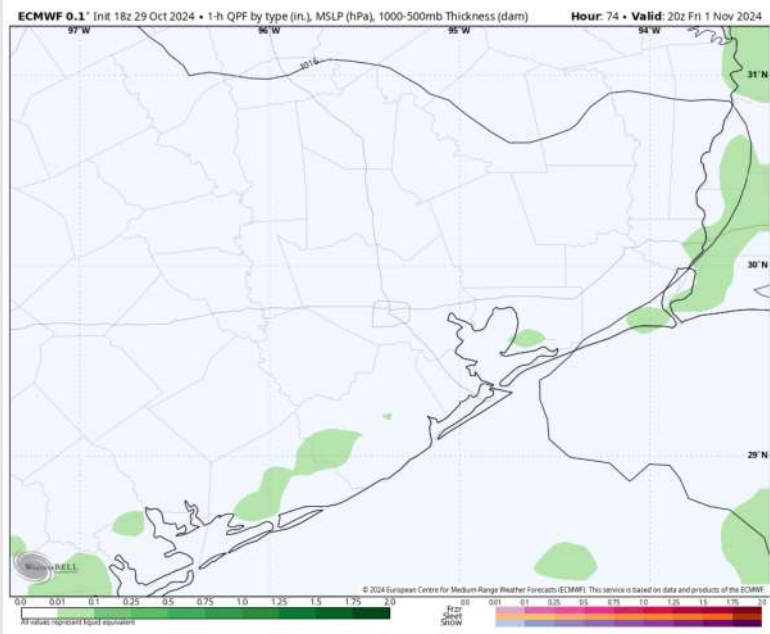
Precip: Favoring low end chances for a few, brief showers for stations S of Morgan's Point from 9AM – 4PM on Friday.

Wind: Winds will be out of the E throughout the day. **N of Morgan's Point:** Winds will be at 3 – 6 kts for Friday. **S of Morgan's Point:** Winds will be 10 – 15 kts throughout Friday.

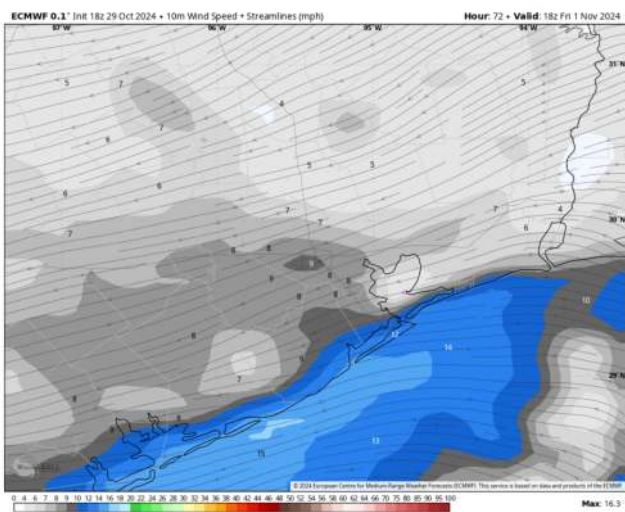
High Temps: **N of Morgan's Point:** Low 80s F. **S of Morgan's Point:** Upper 70s F.

Visibility: No visibility concerns for Friday.

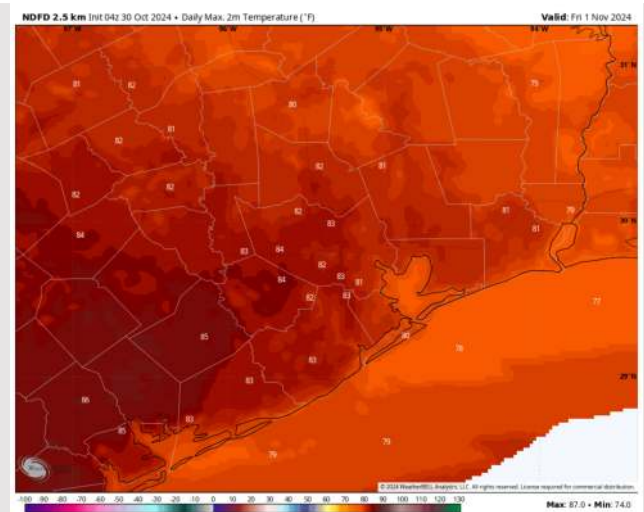
Precip Image: 3 PM CT



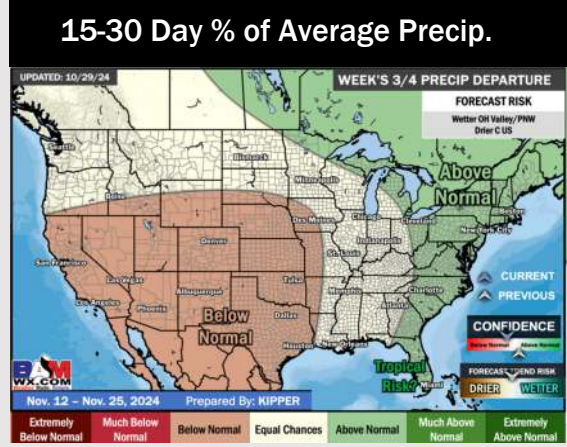
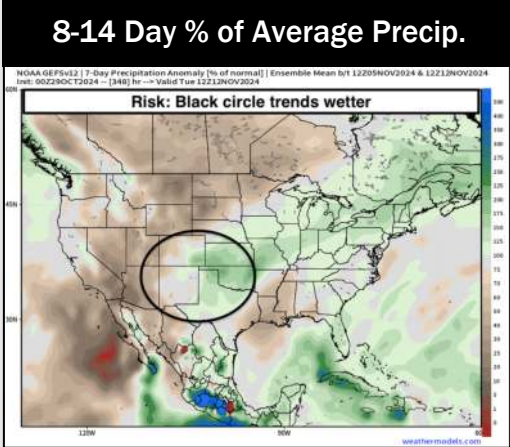
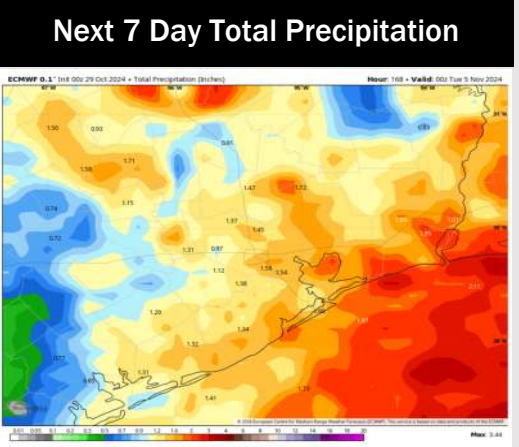
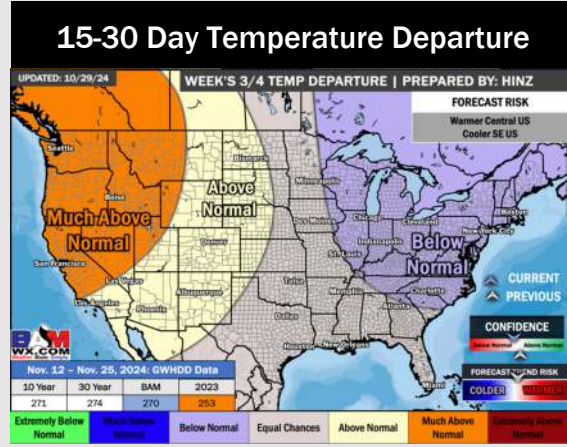
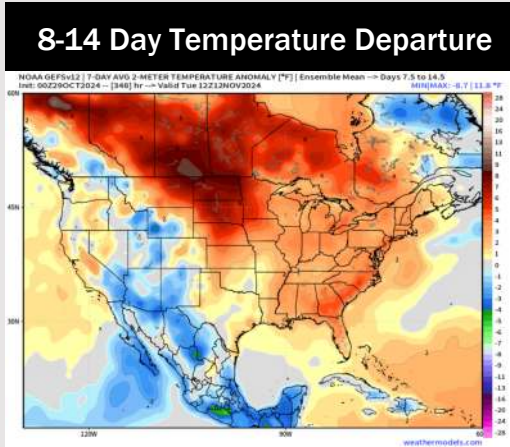
Wind Speed:
1 PM CT



High Temps
Friday



Houston Pilots: 10/30/24



- Temps are expected to be above normal for the week 1 timeframe. Favoring scattered rain chances to work in mid/late week.
- Above normal temperatures are favored for week 2. Favoring precipitation to be below normal.
- Near normal temperatures and below normal precipitation chances are expected for the weeks 3/4 timeframe.