

# Houston Pilots Forecast Package



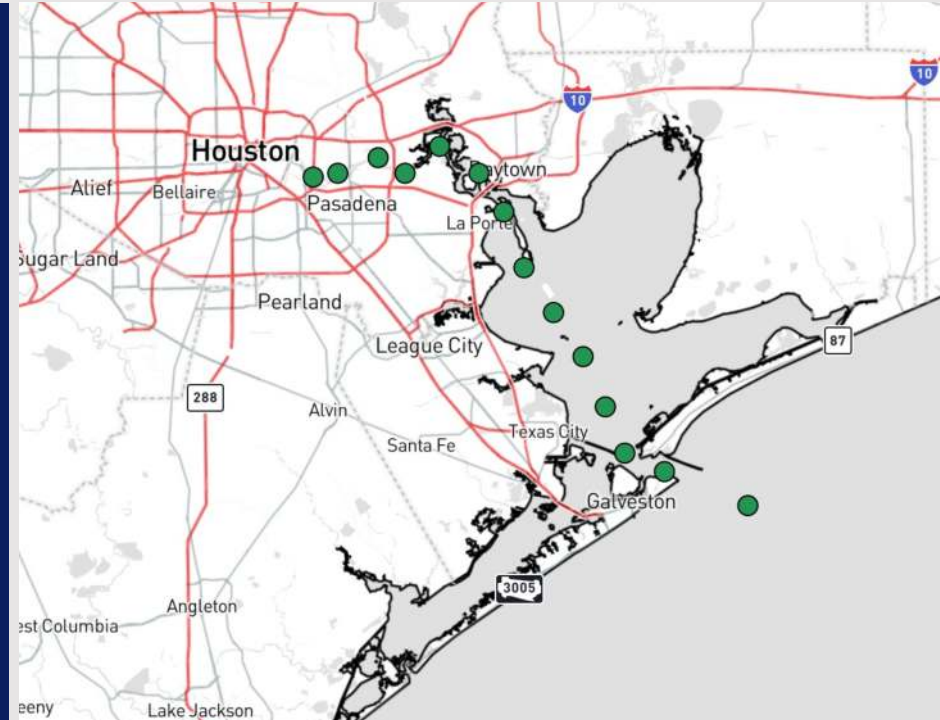
Updated: 11:00 PM CT

Monday, October 28, 2024

Forecaster: John Kemper

## Weather Headlines

- **Wave heights expected to increase to 3 - 5' for Boarding Station and 11/12. See wave heights slide below.**
- **Gusty winds of 25-30 kts expected through WED PM.**
- **Scattered shower chances will gradually increase through Wednesday PM.**
- **No tropical concerns for at least the next 7 days!**

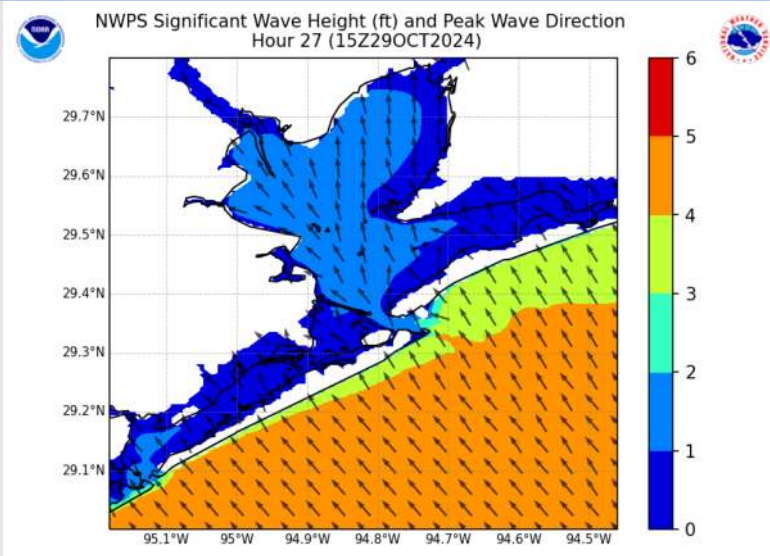


**Current Radar: 10:55 PM CT**



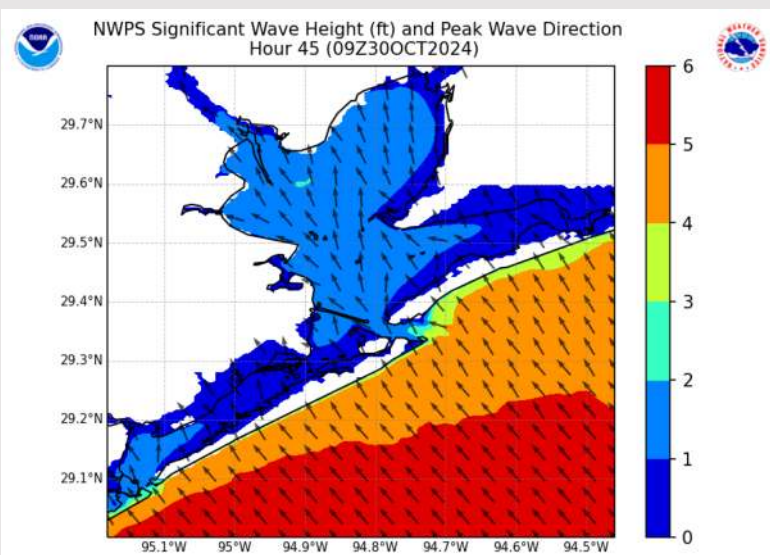
As always, please do not hesitate to reach out to us with any forecast questions via the chat option on Clarity or our on-call number, **(317)-560-8122** press **1** for forecast questions.

# Wave Height Forecast Update



10 AM CT TUE

Wave heights expected to continue to slowly increase for the Boarding Station and 11/12 this AM due to increasing wind gusts. Max Heights of 3' - 4' favored by 10AM today.



4 AM CT WED

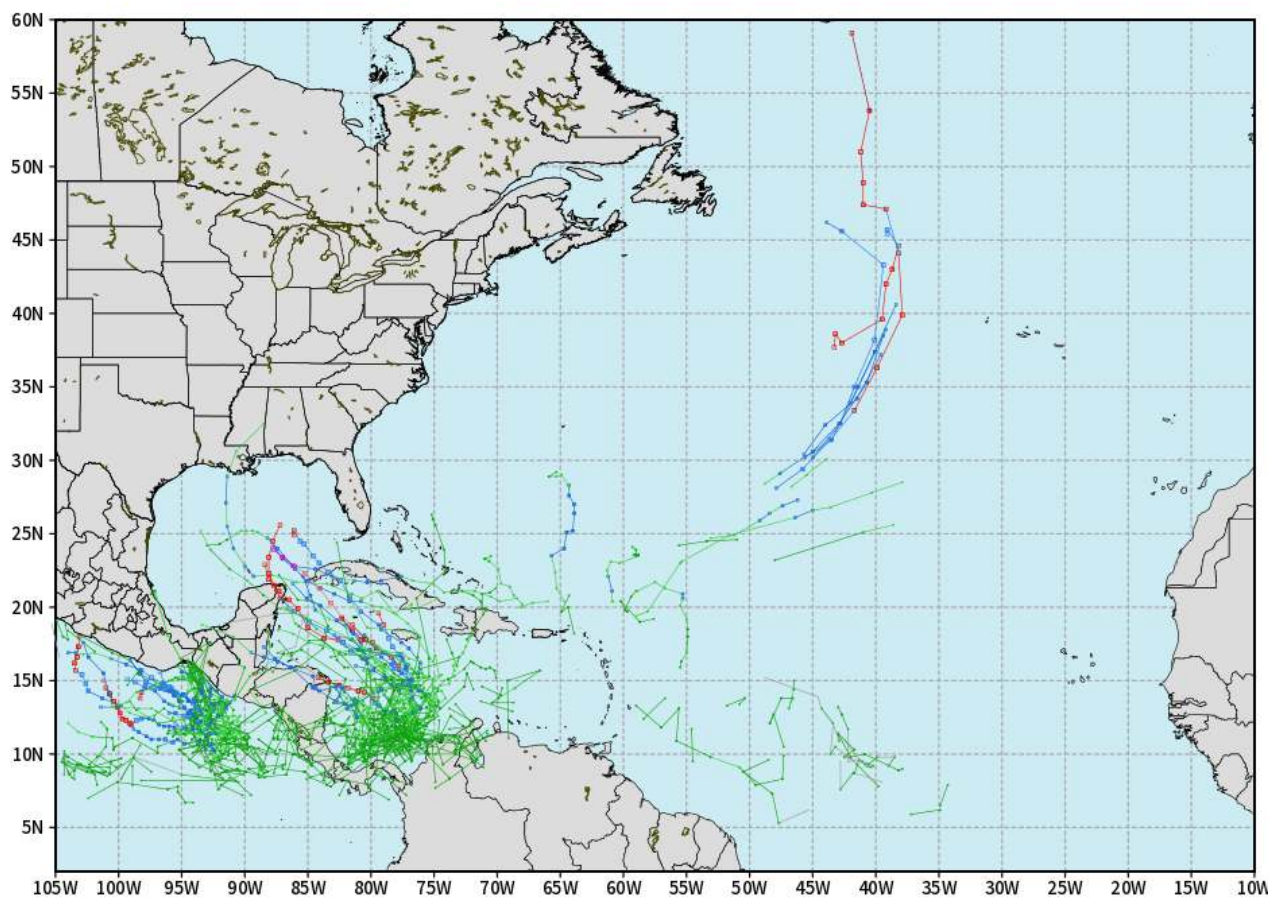
By 12 AM WED, max wave heights of 4' - 5' will be in play for the Boarding Station and 11/12 through ~ 10AM before winds/waves calm.

# Houston Pilots Tropical Update

## European Tropical Tracks - Next 10 Days

ECMWF ATLANTIC EPS Cyclone Locations --> Next [10-days]  
INIT: 12Z28OCT2024 --> UNTIL 12Z07NOV2024

o-o ENSEMBLE MEAN  
o-o 1000 - 1010 hPa  
o-o 980 - 999 hPa  
o-o 960 - 979 hPa  
o-o 950 - 959 hPa  
o-o < 950 hPa



[weathermodels.com](http://weathermodels.com)

Currently favoring no threats for HOU over the next 7 days. We are monitoring increasing potential to start the month of November with potential formation in the Western Caribbean.

# Houston Pilots Visibility Chart (miles)



## Forecast Confidence



Visibility	Tue 12 am	Tue 1 am	Tue 2 am	Tue 3 am	Tue 4 am	Tue 5 am	Tue 6 am	Tue 7 am	Tue 8 am	Tue 9 am	Tue 10 am	Tue 11 am	Tue 12 pm	Tue 1 pm	Tue 2 pm	Tue 3 pm	Tue 4 pm	Tue 5 pm	Tue 6 pm	Tue 7 pm	Tue 8 pm	Tue 9 pm	Tue 10 pm	Tue 11 pm
Houston Pilots N - 610 Bridge	10	10	10	10	10	10	10	10	10	10	10	10	10	10	10	10	10	10	10	10	10	10	10	10
Houston Pilots M - Kinder 1	10	10	10	10	10	10	10	10	10	10	10	10	10	10	10	10	10	10	10	10	10	10	10	10
Houston Pilots L - Greens Bayou	10	10	10	10	10	10	10	10	10	10	10	10	10	10	10	10	10	10	10	10	10	10	10	10
Houston Pilots K - Shell Crude	10	10	10	10	10	10	10	10	10	10	10	10	10	10	10	10	10	10	10	10	10	10	10	10
Houston Pilots J - Lynchburg Ferries	10	10	10	10	10	10	10	10	10	10	10	10	10	10	10	10	10	10	10	10	10	10	10	10
Houston Pilots I - Exxon 3	10	10	10	10	10	10	10	10	10	10	10	10	10	10	10	10	10	10	10	10	10	10	10	10
Houston Pilots H - Morgans Point	10	10	10	10	10	10	10	10	10	10	10	10	10	10	10	10	10	10	10	10	10	10	10	10
Houston Pilots G - 75/76	10	10	10	10	10	10	10	10	10	10	10	10	10	10	10	10	10	10	10	10	10	10	10	10
Houston Pilots F - 63/64	10	10	10	10	10	10	10	10	10	10	10	10	10	10	10	10	10	10	10	10	10	10	10	10
Houston Pilots E - 51/52	10	10	10	10	10	10	10	10	10	10	10	10	10	10	10	10	10	10	10	10	10	10	10	10
Houston Pilots D - 37/38	10	10	10	10	10	10	10	10	10	10	10	10	10	10	10	10	10	10	10	10	10	10	10	10
Houston Pilots C - 25/26	10	10	10	10	10	10	10	10	10	10	10	10	10	10	10	10	10	10	10	10	10	10	10	10
Houston Pilots B - 11/12	10	10	10	10	10	10	10	10	10	10	10	10	10	10	10	10	10	10	10	10	10	10	10	10
Houston Pilots A - 1 & 2 Bravo	10	10	10	10	10	10	10	10	10	10	10	10	10	10	10	10	10	10	10	10	10	10	10	10

**NOTE: This is automated data that may/may not agree with the official BAM thinking that's found on the daily slides or special visibility report slides. This data should be used as a guide only**

# Houston Pilots Wind Chart



→ Sustained wind 10 Knots

→ Gusts 15 Knots

→ Wind from the SE

**Example**

10

15

↖

Visibility	Tue 12 am	Tue 1 am	Tue 2 am	Tue 3 am	Tue 4 am	Tue 5 am	Tue 6 am	Tue 7 am	Tue 8 am	Tue 9 am	Tue 10 am	Tue 11 am	Tue 12 pm	Tue 1 pm	Tue 2 pm	Tue 3 pm	Tue 4 pm	Tue 5 pm	Tue 6 pm	Tue 7 pm	Tue 8 pm	Tue 9 pm	Tue 10 pm	Tue 11 pm
Houston Pilots N - 610 Bridge	10	10	10	10	10	10	10	10	10	10	10	10	10	10	10	10	10	10	10	10	10	10	10	10
Houston Pilots M - Kinder 1	10	10	10	10	10	10	10	10	10	10	10	10	10	10	10	10	10	10	10	10	10	10	10	10
Houston Pilots L - Greens Bayou	10	10	10	10	10	10	10	10	10	10	10	10	10	10	10	10	10	10	10	10	10	10	10	10
Houston Pilots K - Shell Crude	10	10	10	10	10	10	10	10	10	10	10	10	10	10	10	10	10	10	10	10	10	10	10	10
Houston Pilots J - Lynchburg Ferries	10	10	10	10	10	10	10	10	10	10	10	10	10	10	10	10	10	10	10	10	10	10	10	10
Houston Pilots I - Exxon 3	10	10	10	10	10	10	10	10	10	10	10	10	10	10	10	10	10	10	10	10	10	10	10	10
Houston Pilots H - Morgans Point	10	10	10	10	10	10	10	10	10	10	10	10	10	10	10	10	10	10	10	10	10	10	10	10
Houston Pilots G - 75/76	10	10	10	10	10	10	10	10	10	10	10	10	10	10	10	10	10	10	10	10	10	10	10	10
Houston Pilots F - 63/64	10	10	10	10	10	10	10	10	10	10	10	10	10	10	10	10	10	10	10	10	10	10	10	10
Houston Pilots E - 51/52	10	10	10	10	10	10	10	10	10	10	10	10	10	10	10	10	10	10	10	10	10	10	10	10
Houston Pilots D - 37/38	10	10	10	10	10	10	10	10	10	10	10	10	10	10	10	10	10	10	10	10	10	10	10	10
Houston Pilots C - 25/26	10	10	10	10	10	10	10	10	10	10	10	10	10	10	10	10	10	10	10	10	10	10	10	10
Houston Pilots B - 11/12	10	10	10	10	10	10	10	10	10	10	10	10	10	10	10	10	10	10	10	10	10	10	10	10
Houston Pilots A - 1 & 2 Bravo	10	10	10	10	10	10	10	10	10	10	10	10	10	10	10	10	10	10	10	10	10	10	10	10

**NOTE: This is automated data that may/may not agree with the official BAM thinking that's found on the daily slides. This data should be used as a guide only.**

## Forecast Discussion

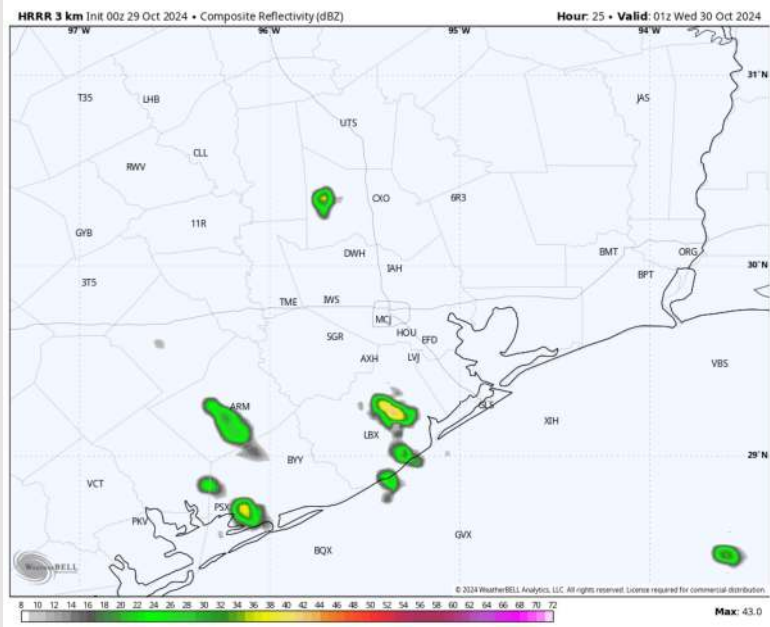
**Precip:** Favoring low end chances for a few, brief showers/downpours for stations S of Morgan's Point after 8PM.

**Wind:** Winds will be out of the SE throughout the day. **N of Morgan's Point:** Winds will be at 5 – 10 kts through 9 AM, increasing to 11 – 16 kts after that time and remaining there for the rest of the day. **S of Morgan's Point:** Winds will be 13 – 18 kts throughout the day Tuesday. **Wind gusts of up to 25 - 30 kts in play for all Stations between 9 AM and 9 PM.**

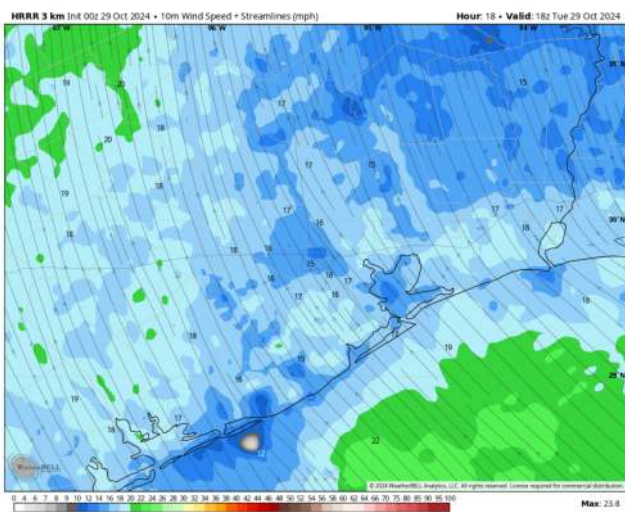
**High Temps:** **N of Morgan's Point:** Mid 80s F. **S of Morgan's Point:** Upper 70s - Low 80s F.

**Visibility:** No visibility concerns for today.

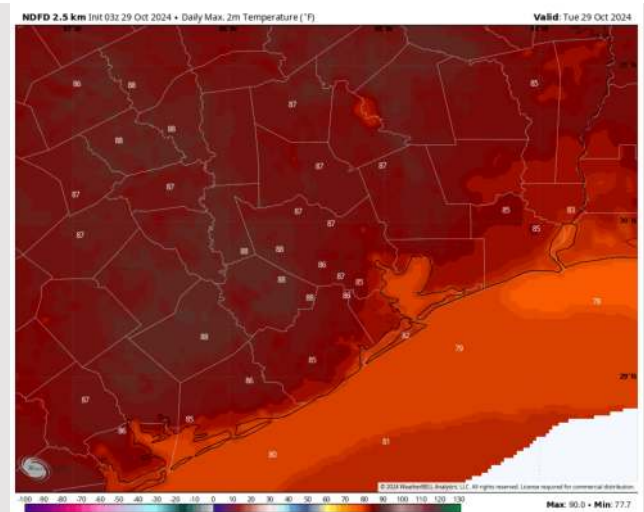
## Precip Image: 8 PM CT



Wind Speed:  
1 PM CT



High Temps  
Today



# Houston Pilots: WED. 10/30/2024



## Forecast Discussion

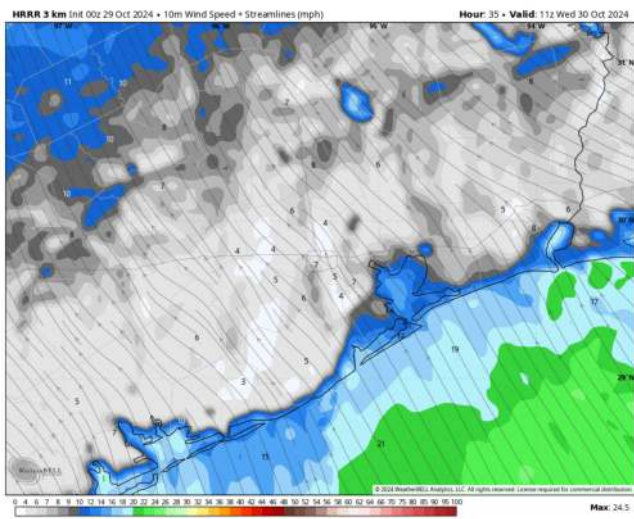
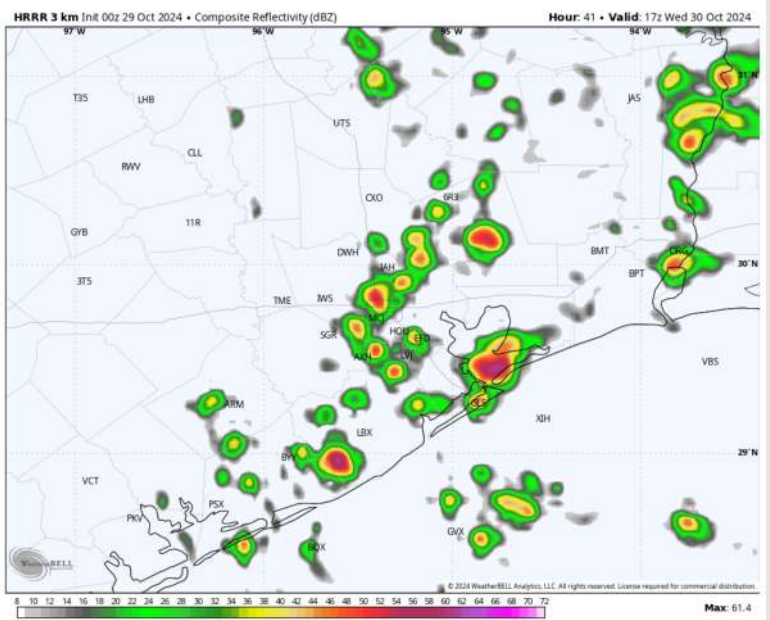
**Precip:** Favoring scattered showers and storms to be in play between 8 AM and 7 PM. Highest coverage (50%) is anticipated from 12 PM to 5 PM.

**Wind:** Winds will be out of the SE throughout the day Wednesday. **N of Morgan's Point:** Winds will start out at 4 – 7 kts, gradually increasing to 10 – 15 kts after 10AM and continue there throughout Wednesday. **S of Morgan's Point:** Winds will be at 13 - 18 kts throughout the day Wednesday. **Wind gusts of 20-25 kts will be in play for Stations S of Morgan's Point for the entire day, with gusts of 20-25kts in play for stations N of Morgan's Point from 10AM – 9PM.**

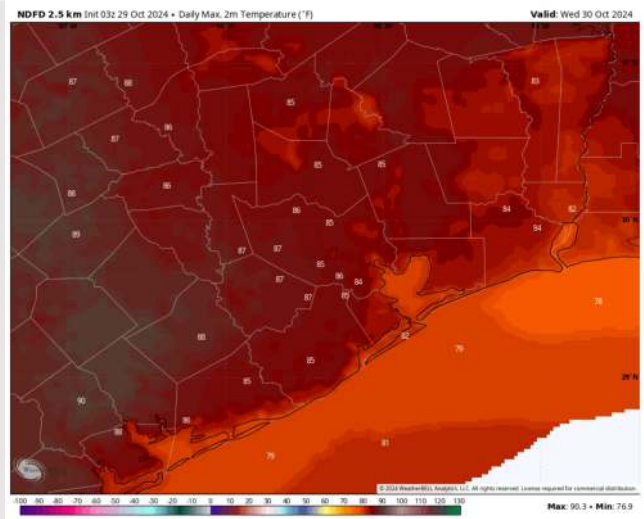
**High Temps:** **N of Morgan's Point:** Mid to upper 80s F. **S of Morgan's Point:** Upper 70s F to low 80s F.

**Visibility:** No visibility concerns for Wednesday.

## Precip Image: 12 PM CT



Wind Speed:  
6 AM CT



High Temps  
Wednesday

# Houston Pilots: THU. 10/31/2024



## Forecast Discussion

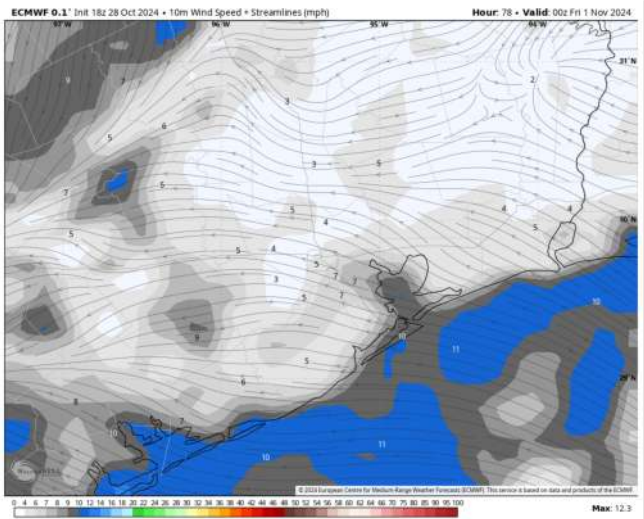
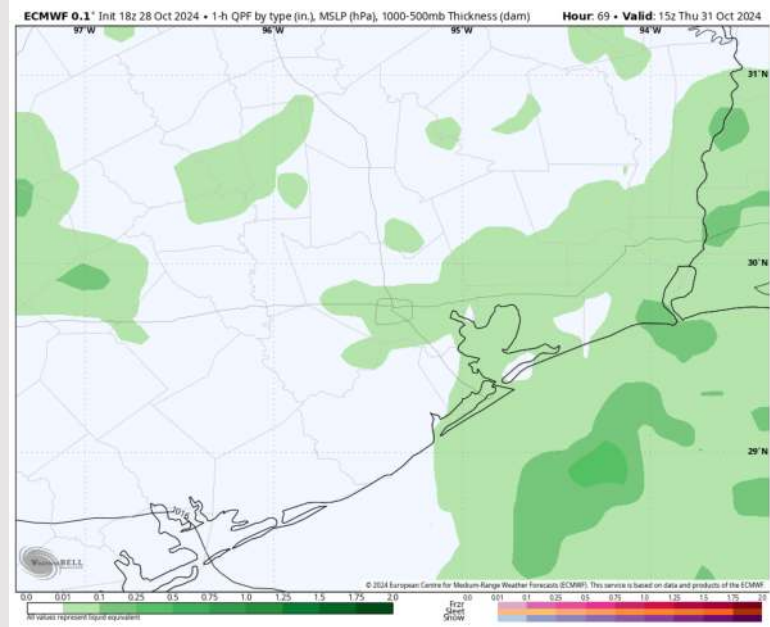
**Precip:** Favoring scattered showers to be in play (30%) from 3AM – 3PM, with slightly lower confidence as to the exact end time of the chances.

**Wind:** Winds will be out of the SE through 4PM before veering out of the E / ESE. **N of Morgan's Point:** Winds will be at 3 – 7 kts for all of Thursday. **S of Morgan's Point:** Winds will be at 9 – 14 kts for all of Thursday. **Wind gusts of 20-25 kts will be possible for the Boarding Station and 11/12.**

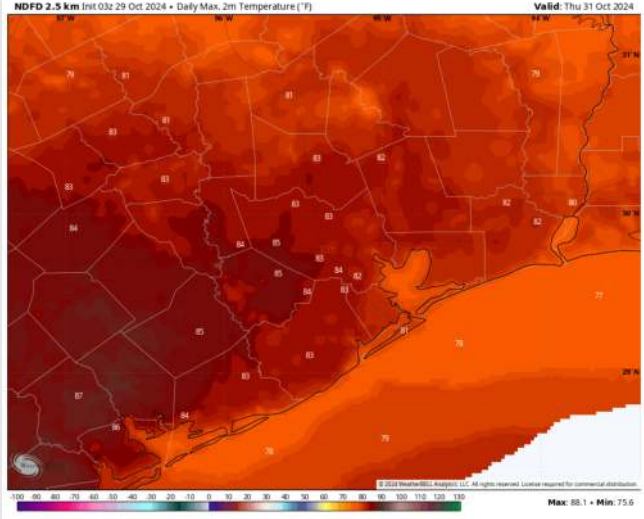
**High Temps:** **N of Morgan's Point:** Low to Mid 80s F. **S of Morgan's Point:** Near 80 F.

**Visibility:** No visibility concerns for Thursday.

## Precip Image: 10 AM CT



Wind Speed  
7 PM CT



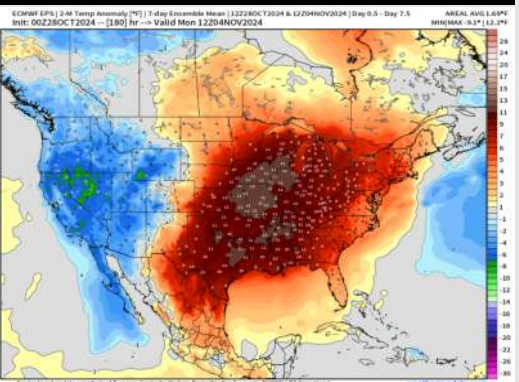
High Temps  
Thursday



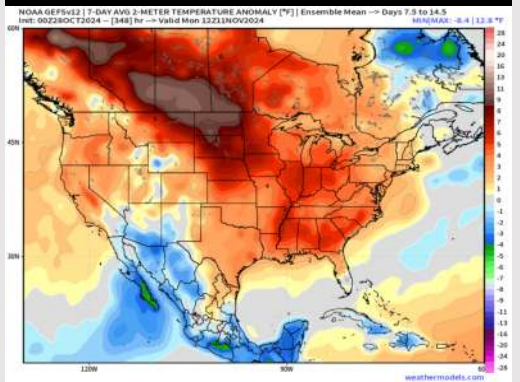
# Houston Pilots: 10/29/24



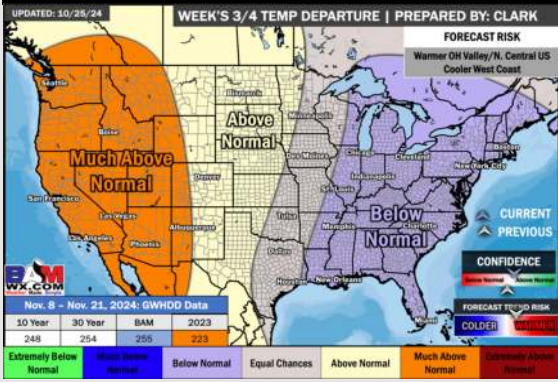
**Next 7 Day Temperature Departure**



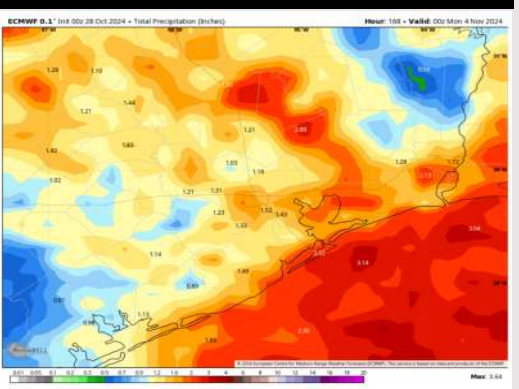
**8-14 Day Temperature Departure**



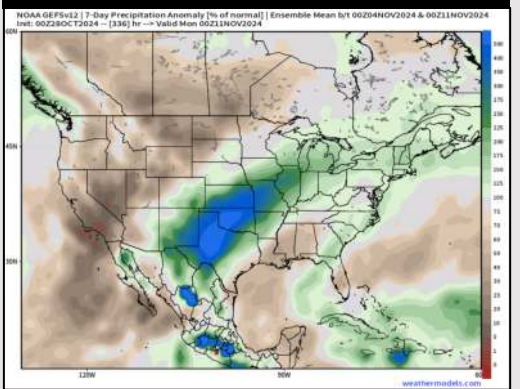
**15-30 Day Temperature Departure**



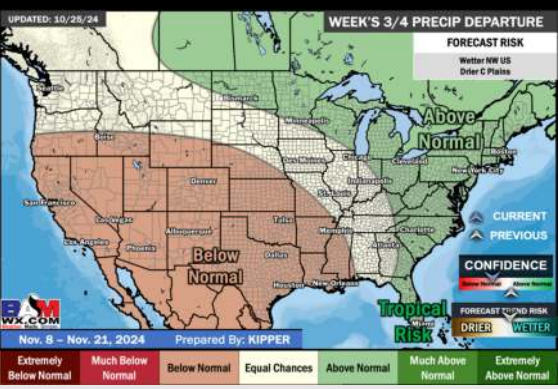
**Next 7 Day Total Precipitation**



**8-14 Day % of Average Precip.**



**15-30 Day % of Average Precip.**



- Temps are expected to be above normal for the week 1 timeframe. Favoring scattered rain chances to work in mid/late week.
- Above normal temperatures are favored for week 2. Favoring precipitation to be below normal.
- Near normal temperatures and below normal precipitation chances are expected for the weeks 3/4 timeframe.