

Houston Pilots Forecast Package



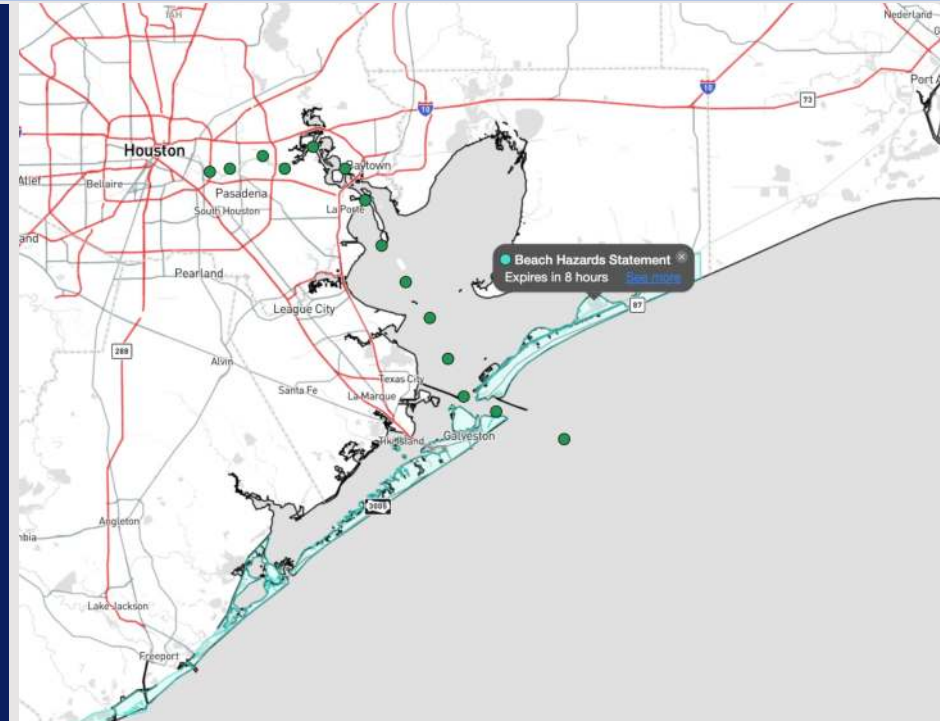
Updated: 11:30 PM CT

Monday, October 21, 2024

Forecaster: John Kemper

Weather Headlines

- **Patchy Fog Risks for Stations N. of Morgan's Point. See visibility slide below for thoughts on TUE AM specifically!**
- **Winds are expected to be equal to or less than 10kts for the next 72 hours.**
- **No tropical concerns for at least the next 7 days!**



Current Radar: 11:25 PM CT



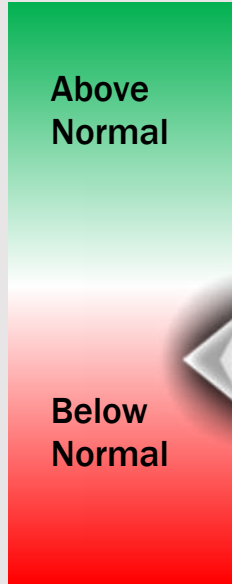
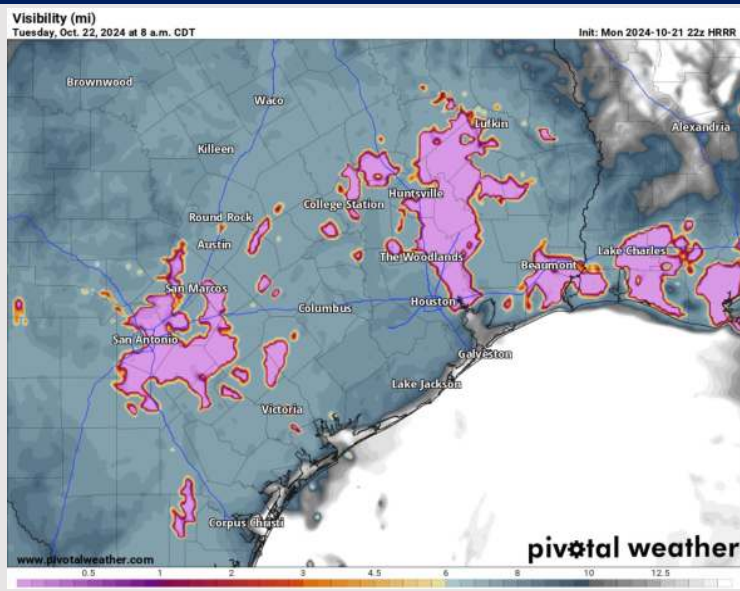
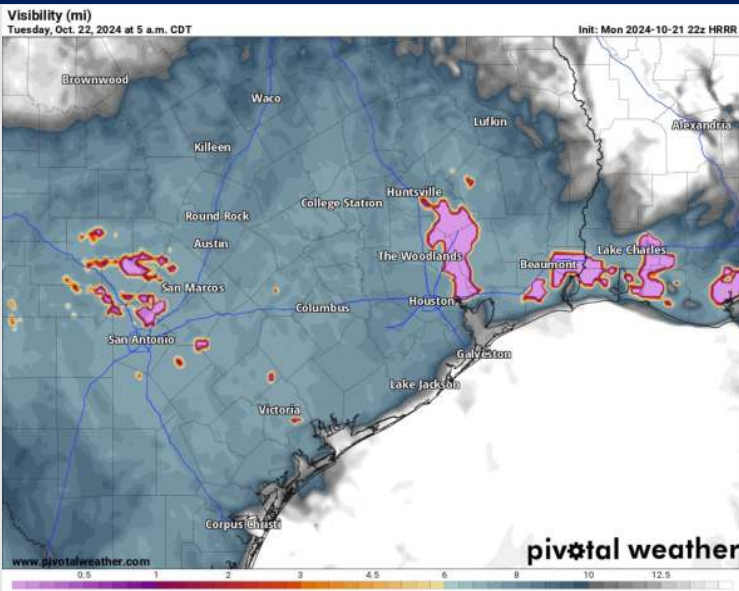
As always, please do not hesitate to reach out to us with any forecast questions via the chat option on Clarity or our on-call number, **(317)-560-8122** press **1** for forecast questions.

Houston Pilots Visibility Report



5 AM CDT TUE VISIBILITY 8 AM CDT TUE VISIBILITY

Confidence



- Isolated to Patchy fog risk Tuesday morning between 4 AM – 9 AM. Best timeframe likely between 5 - 8 AM.
- Visibility within this timeframe could drop to less than 1 mile at times (most locations will only see reduced visibilities of 2 – 4 miles).
- Favoring this to be a risk ONLY for stations N of Morgan's Point.
- Confidence is slightly below normal due to risk of fog developing too far north / not have any impacts.

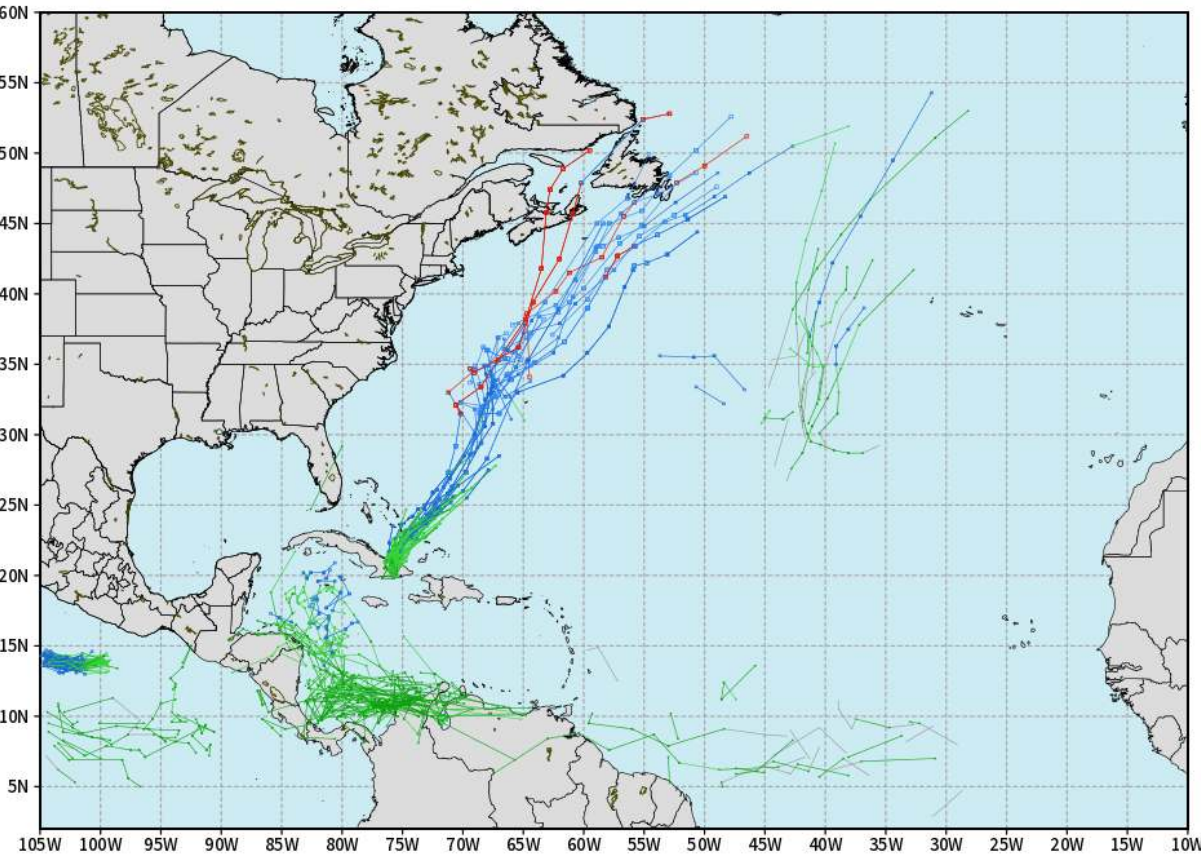
TIMEFRAME DISCUSSED	THREAT
4 AM – 9 AM TUE	Low

Houston Pilots Tropical Update

European Tropical Tracks - Next 10 Days

ECMWF ATLANTIC EPS Cyclone Locations --> Next [10-days]
INIT: 12Z21OCT2024 --> UNTIL 12Z31OCT2024

o-o ENSEMBLE MEAN
o-o 1000 - 1010 hPa
o-o 980 - 999 hPa
o-o 960 - 979 hPa
o-o 950 - 959 hPa
o-o < 950 hPa



weathermodels.com

Tropical Storm Oscar continues to weaken and is expected to become post-tropical by 8AM TUE as it turns further NE into the Atlantic.

While we continue to favor no threats for Houston over the next 7 days, we will need to monitor the Caribbean for an additional system towards end of month.

Houston Pilots Visibility Chart (miles)



Forecast Confidence



Visibility	Tue 12 am	Tue 1 am	Tue 2 am	Tue 3 am	Tue 4 am	Tue 5 am	Tue 6 am	Tue 7 am	Tue 8 am	Tue 9 am	Tue 10 am	Tue 11 am	Tue 12 pm	Tue 1 pm	Tue 2 pm	Tue 3 pm	Tue 4 pm	Tue 5 pm	Tue 6 pm	Tue 7 pm	Tue 8 pm	Tue 9 pm	Tue 10 pm	Tue 11 pm
Houston Pilots N - 610 Bridge	10	10	10	10	10	10	9	6.9	6.9	5.9	10	10	10	10	10	10	10	10	10	10	10	10	10	10
Houston Pilots M - Kinder 1	10	10	10	10	10	10	9	6.9	6.9	5.9	10	10	10	10	10	10	10	10	10	10	10	10	10	10
Houston Pilots L - Greens Bayou	10	10	10	10	10	10	9	6.9	3.9	2.9	10	10	10	10	10	10	10	10	10	10	10	10	10	10
Houston Pilots K - Shell Crude	10	10	10	10	10	10	9	6.9	3.9	2.9	10	10	10	10	10	10	10	10	10	10	10	10	10	10
Houston Pilots J - Lynchburg Ferries	10	10	10	10	10	10	9	3.9	3.9	2.9	10	10	10	10	10	10	10	10	10	10	10	10	10	10
Houston Pilots I - Exxon 3	10	10	10	10	10	10	10	7.9	3.9	2.9	10	10	10	10	10	10	10	10	10	10	10	10	10	10
Houston Pilots H - Morgans Point	10	10	10	10	10	10	10	9	6.9	5.9	10	10	10	10	10	10	10	10	10	10	10	10	10	10
Houston Pilots G - 75/76	10	10	10	10	10	10	10	10	10	9	10	10	10	10	10	10	10	10	10	10	10	10	10	9
Houston Pilots F - 63/64	10	10	10	10	10	10	10	10	10	9	10	10	10	10	10	10	10	10	10	10	10	10	10	9
Houston Pilots E - 51/52	10	10	10	10	10	10	10	10	10	10	10	10	10	10	10	10	10	10	10	10	10	10	10	9
Houston Pilots D - 37/38	10	10	10	10	10	10	10	10	10	10	10	10	10	10	10	10	10	10	10	10	10	10	10	9
Houston Pilots C - 25/26	10	10	10	10	10	10	10	10	10	10	10	10	10	10	10	10	10	10	10	10	10	10	10	9
Houston Pilots B - 11/12	10	10	10	10	10	10	10	10	10	10	10	10	10	10	10	10	10	10	10	10	10	10	10	10
Houston Pilots A - 1 & 2 Bravo	10	10	10	10	10	10	10	10	10	10	10	10	10	10	10	10	10	10	10	10	10	10	10	10

NOTE: This is automated data that may/may not agree with the official BAM thinking that's found on the daily slides or special visibility report slides. This data should be used as a guide only

Houston Pilots Wind Chart



→ Sustained wind 10 Knots
 → Gusts 15 Knots
 → Wind from the SE

Example

10
 15
 ↙

Wind	Tue 12 am	Tue 1 am	Tue 2 am	Tue 3 am	Tue 4 am	Tue 5 am	Tue 6 am	Tue 7 am	Tue 8 am	Tue 9 am	Tue 10 am	Tue 11 am	Tue 12 pm	Tue 1 pm	Tue 2 pm	Tue 3 pm	Tue 4 pm	Tue 5 pm	Tue 6 pm	Tue 7 pm	Tue 8 pm	Tue 9 pm	Tue 10 pm	Tue 11 pm
Houston Pilots N - 610 Bridge	3 8 ↙	3 7 ↙	3 7 ↙	2 7 ↙	2 6 ↙	2 6 ↙	2 6 ↙	2 6 ↙	2 7 ↙	3 7 ↙	3 7 ↙	3 8 ↙	3 7 ↙	3 8 ↙	3 8 ↙	5 9 ↙	6 10 ↙	6 12 ↙	7 13 ↙	7 14 ↙	8 14 ↙	7 14 ↙	6 12 ↙	5 10 ↙
Houston Pilots M - Kinder 1	3 8 ↙	3 7 ↙	3 7 ↙	2 7 ↙	2 6 ↙	2 6 ↙	2 6 ↙	2 6 ↙	2 7 ↙	3 7 ↙	3 7 ↙	3 8 ↙	3 8 ↙	3 8 ↙	5 9 ↙	5 10 ↙	6 10 ↙	6 12 ↙	7 13 ↙	7 14 ↙	7 14 ↙	6 13 ↙	6 12 ↙	5 10 ↙
Houston Pilots L - Greens Bayou	3 8 ↙	3 7 ↙	3 7 ↙	2 7 ↙	2 6 ↙	2 6 ↙	2 6 ↙	2 6 ↙	3 7 ↙	3 7 ↙	3 7 ↙	3 8 ↙	3 8 ↙	3 8 ↙	5 9 ↙	6 10 ↙	6 13 ↙	7 13 ↙	7 14 ↙	7 14 ↙	7 14 ↙	6 13 ↙	6 12 ↙	5 9 ↙
Houston Pilots K - Shell Crude	3 8 ↙	3 7 ↙	3 7 ↙	2 7 ↙	2 6 ↙	2 6 ↙	2 6 ↙	2 6 ↙	2 6 ↙	3 7 ↙	3 7 ↙	3 8 ↙	3 8 ↙	5 9 ↙	5 9 ↙	6 12 ↙	6 13 ↙	7 13 ↙	7 14 ↙	7 14 ↙	7 14 ↙	6 13 ↙	6 10 ↙	5 9 ↙
Houston Pilots J - Lynchburg Ferries	3 7 ↙	3 7 ↙	3 7 ↙	2 6 ↙	2 6 ↙	2 6 ↙	2 6 ↙	2 6 ↙	2 6 ↙	2 7 ↙	3 7 ↙	3 8 ↙	3 8 ↙	3 8 ↙	3 9 ↙	5 10 ↙	6 12 ↙	6 13 ↙	7 13 ↙	7 13 ↙	7 14 ↙	6 13 ↙	5 10 ↙	3 9 ↙
Houston Pilots I - Exxon 3	7 10 ↙	6 9 ↙	6 9 ↙	6 8 ↙	6 7 ↙	5 7 ↙	5 7 ↙	5 7 ↙	5 7 ↙	5 7 ↙	5 8 ↙	6 9 ↙	6 9 ↙	6 10 ↙	7 12 ↙	8 13 ↙	8 14 ↙	9 15 ↙	9 15 ↙	9 15 ↙	9 15 ↙	9 14 ↙	8 13 ↙	8 12 ↙
Houston Pilots H - Morgans Point	7 10 ↙	6 9 ↙	6 9 ↙	6 8 ↙	6 7 ↙	5 7 ↙	5 7 ↙	5 7 ↙	5 7 ↙	5 7 ↙	5 8 ↙	6 9 ↙	6 9 ↙	6 10 ↙	7 12 ↙	8 13 ↙	8 14 ↙	9 15 ↙	9 14 ↙	9 14 ↙	9 14 ↙	8 13 ↙	8 12 ↙	7 10 ↙
Houston Pilots G - 75/76	8 12 ↙	8 12 ↙	8 12 ↙	7 10 ↙	7 9 ↙	6 9 ↙	6 8 ↙	6 8 ↙	6 8 ↙	6 8 ↙	6 8 ↙	6 9 ↙	6 10 ↙	6 10 ↙	7 13 ↙	8 13 ↙	8 14 ↙	9 15 ↙	10 15 ↙	10 15 ↙	10 15 ↙	9 14 ↙	8 13 ↙	8 12 ↙
Houston Pilots F - 63/64	8 12 ↙	8 12 ↙	8 12 ↙	7 10 ↙	7 9 ↙	6 9 ↙	6 8 ↙	6 8 ↙	6 8 ↙	6 8 ↙	6 9 ↙	6 10 ↙	6 10 ↙	6 10 ↙	7 12 ↙	8 13 ↙	8 14 ↙	9 15 ↙	9 15 ↙	9 15 ↙	9 14 ↙	8 13 ↙	8 12 ↙	8 11 ↙
Houston Pilots E - 51/52	8 12 ↙	8 12 ↙	8 12 ↙	7 10 ↙	7 10 ↙	6 9 ↙	6 8 ↙	6 8 ↙	6 8 ↙	6 8 ↙	6 9 ↙	6 10 ↙	6 10 ↙	6 10 ↙	7 13 ↙	7 13 ↙	8 13 ↙	8 14 ↙	8 14 ↙	8 14 ↙	8 14 ↙	8 13 ↙	8 12 ↙	8 11 ↙
Houston Pilots D - 37/38	8 12 ↙	8 12 ↙	8 12 ↙	8 10 ↙	7 10 ↙	6 9 ↙	6 8 ↙	6 8 ↙	6 8 ↙	6 8 ↙	6 8 ↙	6 9 ↙	6 10 ↙	6 10 ↙	7 12 ↙	7 13 ↙	7 13 ↙	8 14 ↙	8 14 ↙	8 14 ↙	8 13 ↙	8 13 ↙	8 12 ↙	8 11 ↙
Houston Pilots C - 25/26	8 12 ↙	8 12 ↙	8 12 ↙	7 10 ↙	7 10 ↙	6 9 ↙	6 8 ↙	6 8 ↙	6 8 ↙	6 8 ↙	6 8 ↙	6 9 ↙	6 10 ↙	6 10 ↙	7 12 ↙	7 12 ↙	7 13 ↙	8 13 ↙	8 13 ↙	8 13 ↙	8 13 ↙	8 12 ↙	7 12 ↙	7 11 ↙
Houston Pilots B - 11/12	7 12 ↙	7 12 ↙	7 12 ↙	7 12 ↙	6 10 ↙	6 10 ↙	6 9 ↙	6 8 ↙	5 8 ↙	6 8 ↙	6 8 ↙	6 8 ↙	6 9 ↙	6 10 ↙	7 12 ↙	7 12 ↙	7 13 ↙	8 13 ↙	8 13 ↙	8 13 ↙	8 13 ↙	7 12 ↙	6 10 ↙	6 9 ↙
Houston Pilots A - 1 & 2 Bravo	9 14 ↙	9 14 ↙	9 14 ↙	8 13 ↙	8 13 ↙	8 12 ↙	7 12 ↙	7 10 ↙	6 9 ↙	6 9 ↙	6 9 ↙	6 9 ↙	6 10 ↙	6 10 ↙	7 12 ↙	7 12 ↙	7 12 ↙	8 13 ↙	8 13 ↙	8 13 ↙	8 13 ↙	8 13 ↙	8 12 ↙	8 12 ↙

NOTE: This is automated data that may/may not agree with the official BAM thinking that's found on the daily slides. This data should be used as a guide only.

Forecast Discussion

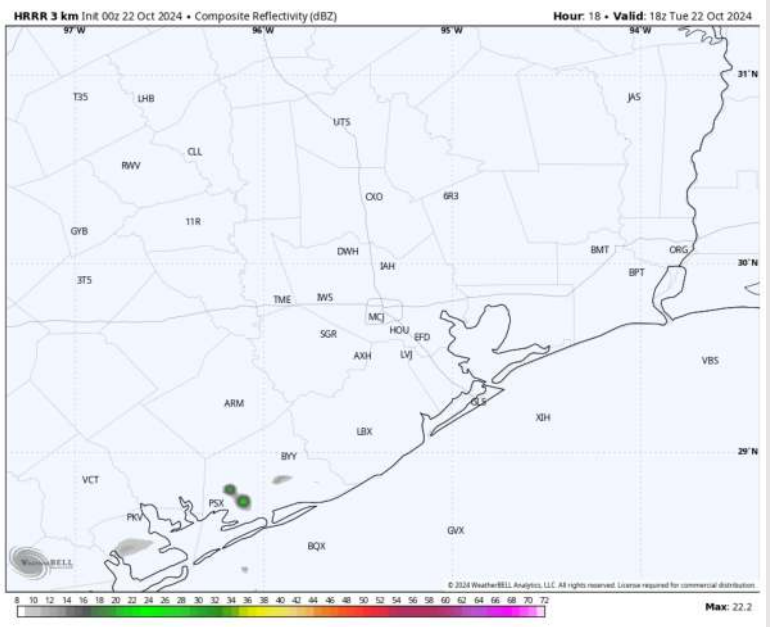
Precip: Favoring dry conditions for today.

Wind: Winds will be generally out of the SSE/SE for all of today. **N of Morgan's Point:** Winds will be at 3 – 5 kts through 10AM before slightly increasing to 4 – 7 kts for the remainder of the day. **S of Morgan's Point:** Winds will be at 5 – 10 kts throughout the day.

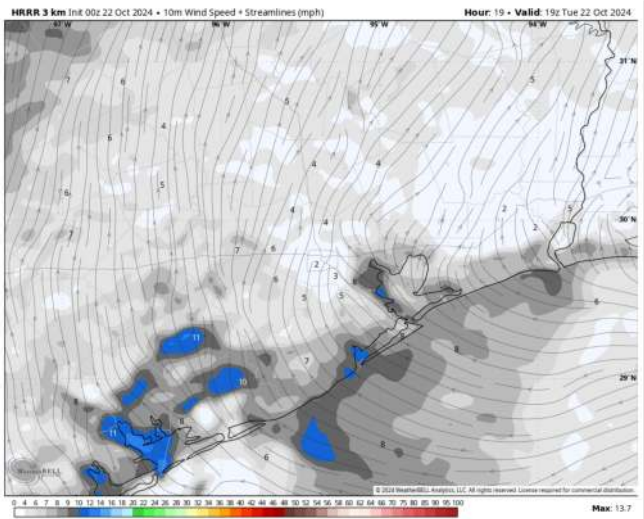
High Temps: **N of Morgan's Point:** Mid 80s F. **S of Morgan's Point:** Upper 70s F to near 80 F.

Visibility: Fog will be possible this AM for Stations N. of Morgan's Point. See Visibility Slide for More Info!

Precip Image: 1 PM CT

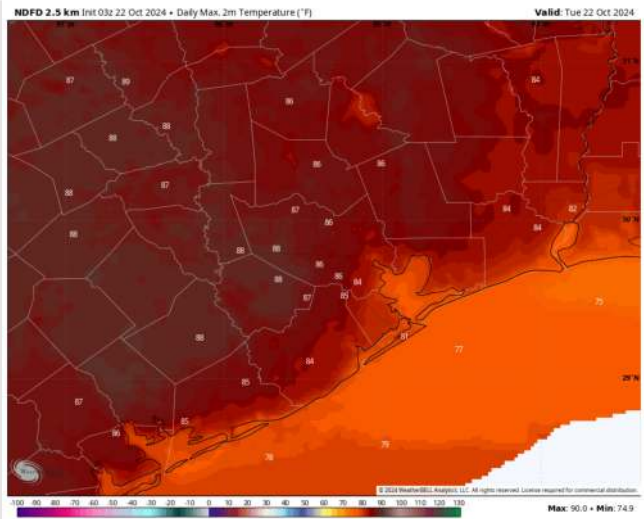


Wind Speed 2 PM CT



Wind Speed
2 PM CT

High Temps Today



High Temps
Today

Houston Pilots: WED. 10/23/2024



Forecast Discussion

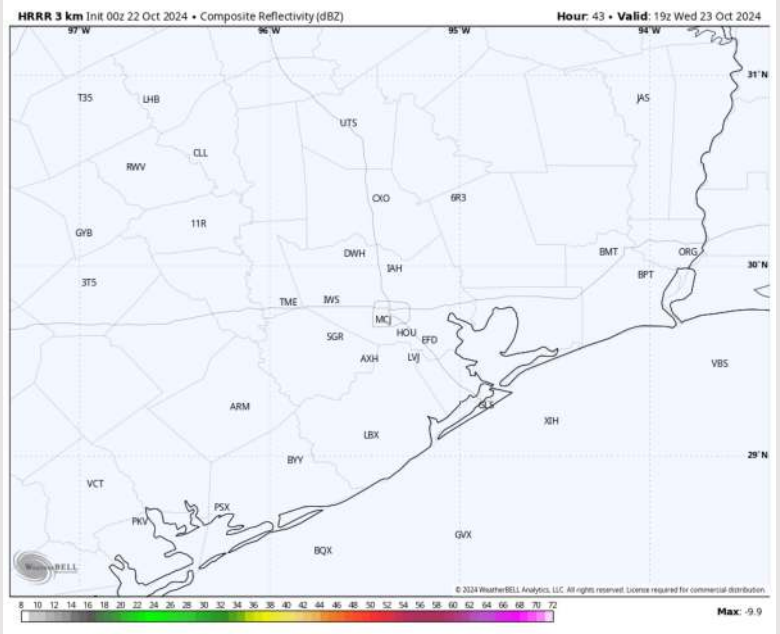
Precip: Favoring dry conditions for Wednesday.

Wind: Winds will be generally out of the E/SE on Wednesday.
N of Morgan's Point: Winds will be at 2 – 7 kts throughout the day.
S of Morgan's Point: Winds will be at 4 – 9 kts throughout the day.

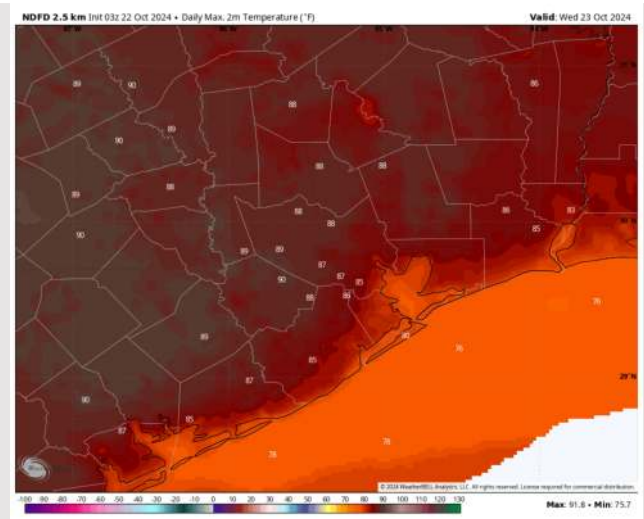
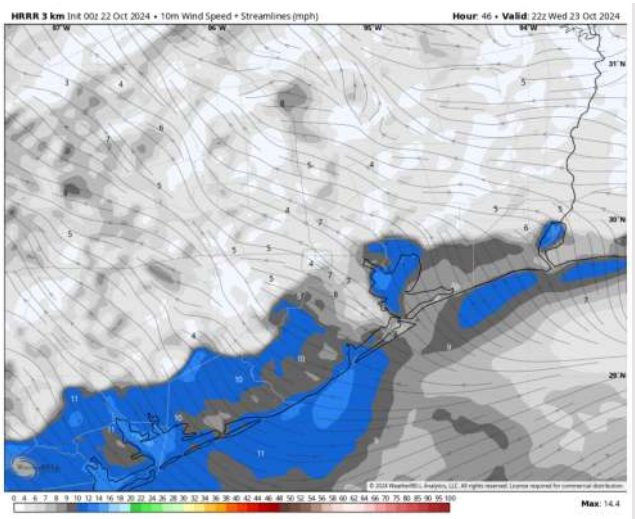
High Temps: **N of Morgan's Point:** Upper 80s F. **S of Morgan's Point:** Upper 70s to Low 80s F.

Visibility: Favoring patchy fog to reduce visibilities to <2 miles for Stations N of Morgan's Point WED AM.

Precip Image: 2 PM CT



Wind Speed:
5 PM CT



High Temps
Wednesday

Forecast Discussion

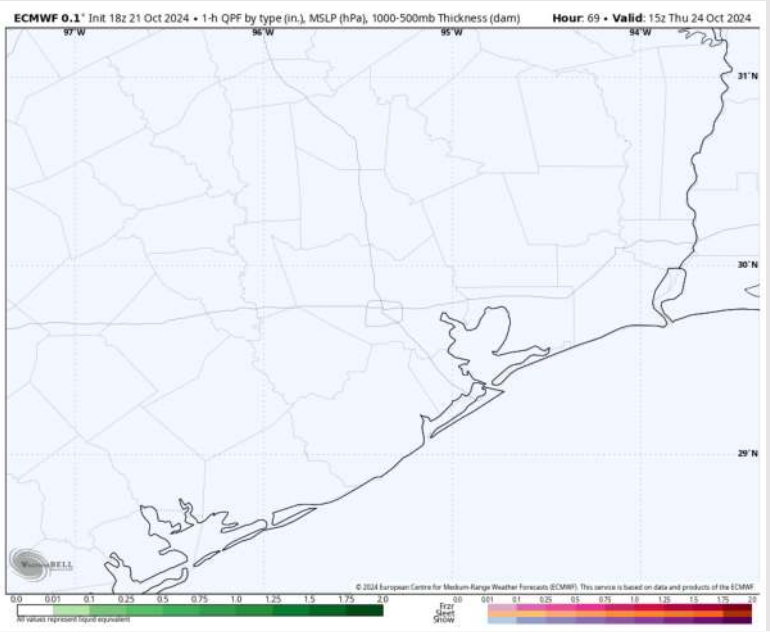
Precip: Favoring dry conditions for Thursday.

Wind: Winds will be variable through 3PM before transitioning fully out of the SE for the rest of the day. **N of Morgan's Point:** Winds will be at 3 – 6 kts for all of Thursday. **S of Morgan's Point:** Winds at 4 – 8 kts through 5PM increasing to 5 - 10kts for the remainder of Thursday evening.

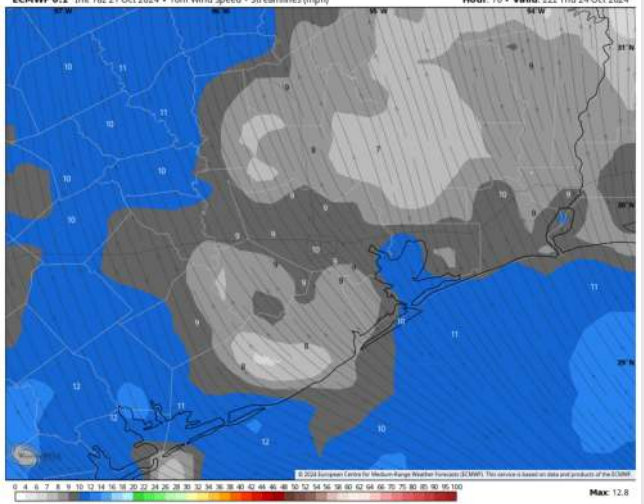
High Temps: **N of Morgan's Point:** Lower to mid 80s F. **S of Morgan's Point:** Upper 70s F.

Visibility: Patchy Fog will be possible for Stations N. of Morgan's Point THU AM, reducing visibilities to <5 miles.

Precip Image: 10 AM CT

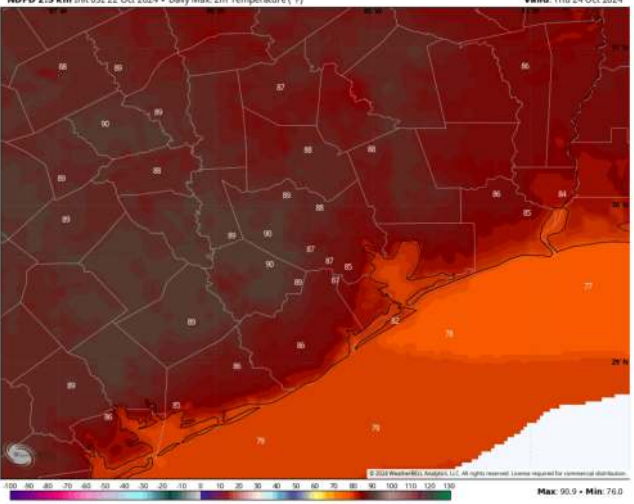


ECMWF 0.1° Init 18z 21 Oct 2024 • 10m Wind Speed • Streamlines (mph) Hour: 76 • Valid: 22z Thu 24 Oct 2024



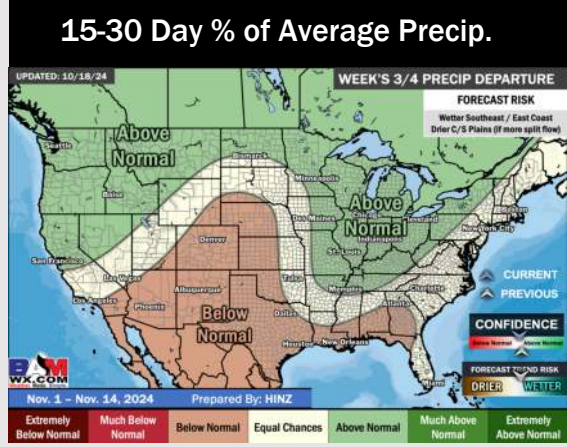
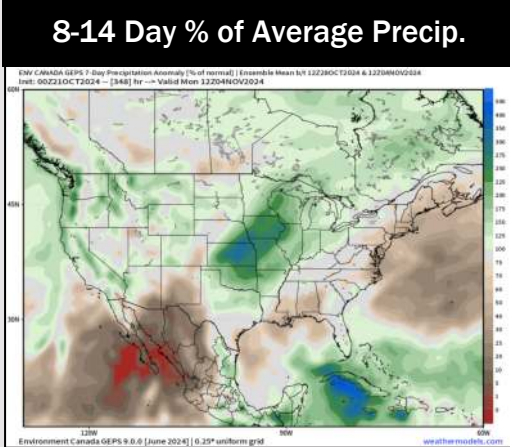
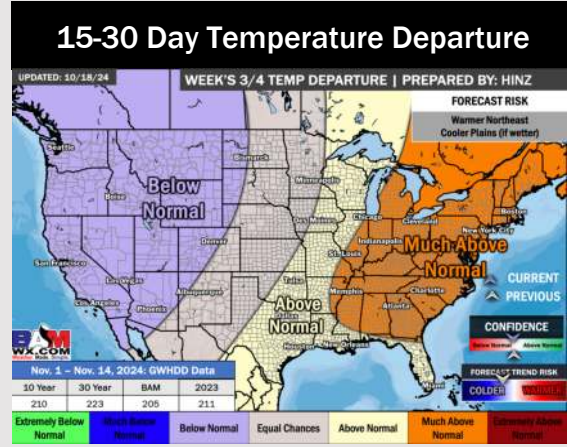
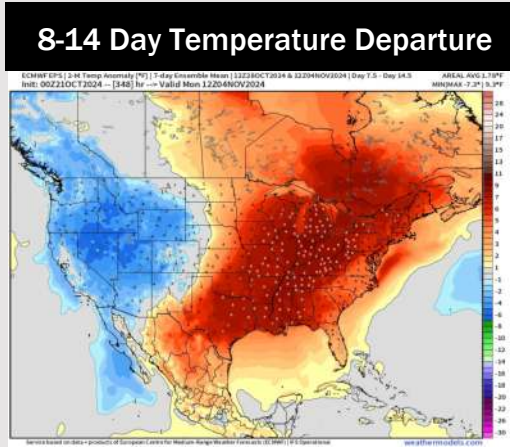
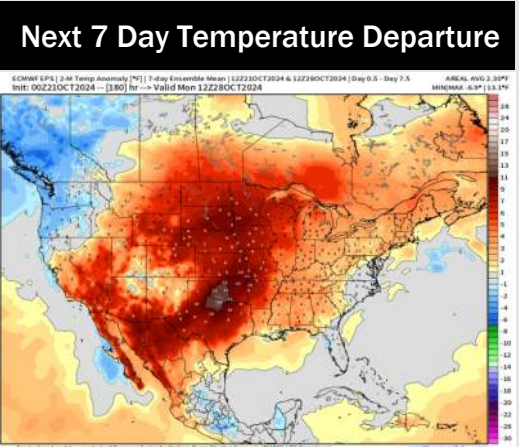
Wind Speed:
5 PM CT

NDFD 2.5 km Init 03z 22 Oct 2024 • Daily Max, 2m Temperature (°F) Valid: Thu 24 Oct 2024



High Temps
Thursday

Houston Pilots: 10/22/24



- Temps are expected to be above normal for the week 1 timeframe. Favoring dry conditions through the week 1 timeframe.
- Above normal temperatures are favored for week 2. Favoring precipitation to be near normal.
- Above normal temperatures and below normal precipitation chances are expected for the weeks 3/4 timeframe.