

Houston Pilots Forecast Package



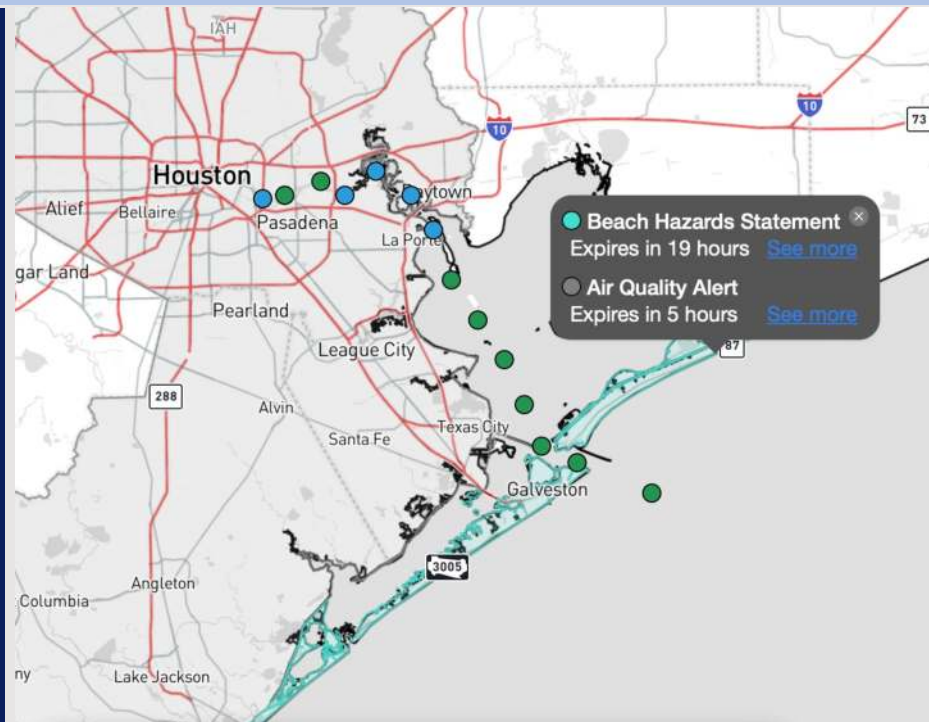
Updated: 1:00 PM CT

Monday, October 21, 2024

Forecaster: Hope Kleitsch

Weather Headlines

- **Fog will be possible TUE AM for Stations N. of Morgan's Point. See visibility slide below!**
- **Winds are expected to be generally calm over the next 72 hours.**
- **Monitoring fog concerns for Stations N of Morgan's Point on WED.**



Current Radar: 1:00 PM CT

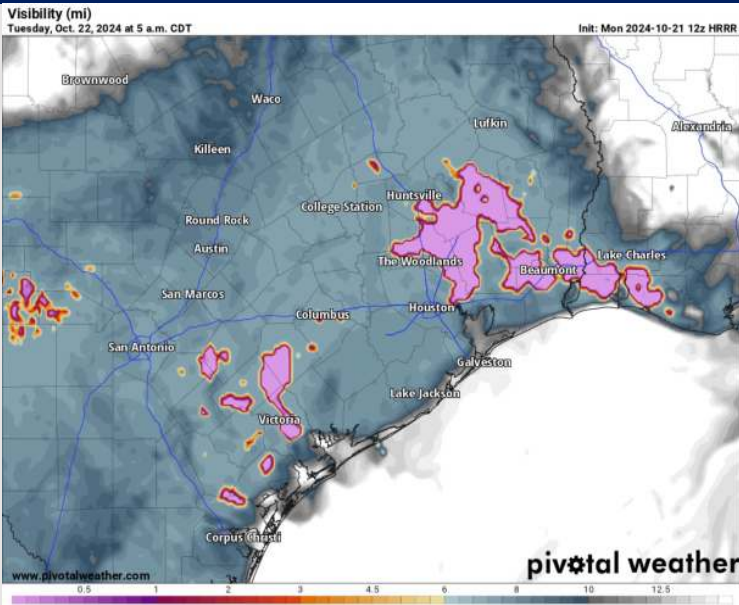


As always, please do not hesitate to reach out to us with any forecast questions via the chat option on Clarity or our on-call number, **(317)-560-8122** press **1** for forecast questions.

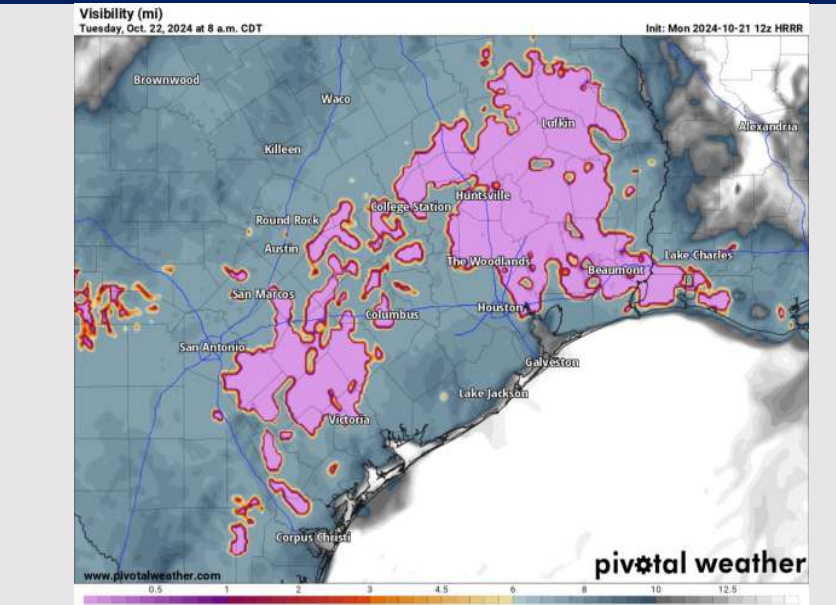
Houston Pilots Visibility Report



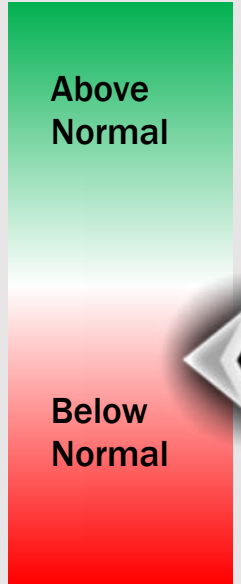
6 AM CDT TUE VISIBILITY



8 AM CDT TUE VISIBILITY



Confidence



- Watching for a patchy fog risk Tuesday morning between 3 AM – 8 AM. Best timeframe likely between 6 - 8 AM
- Visibility within this timeframe could drop to less than 1 mile at times (most locations will have visibilities greater than 2 – 4 miles).
- Favoring this to be a risk ONLY for stations N of Morgan’s Point.

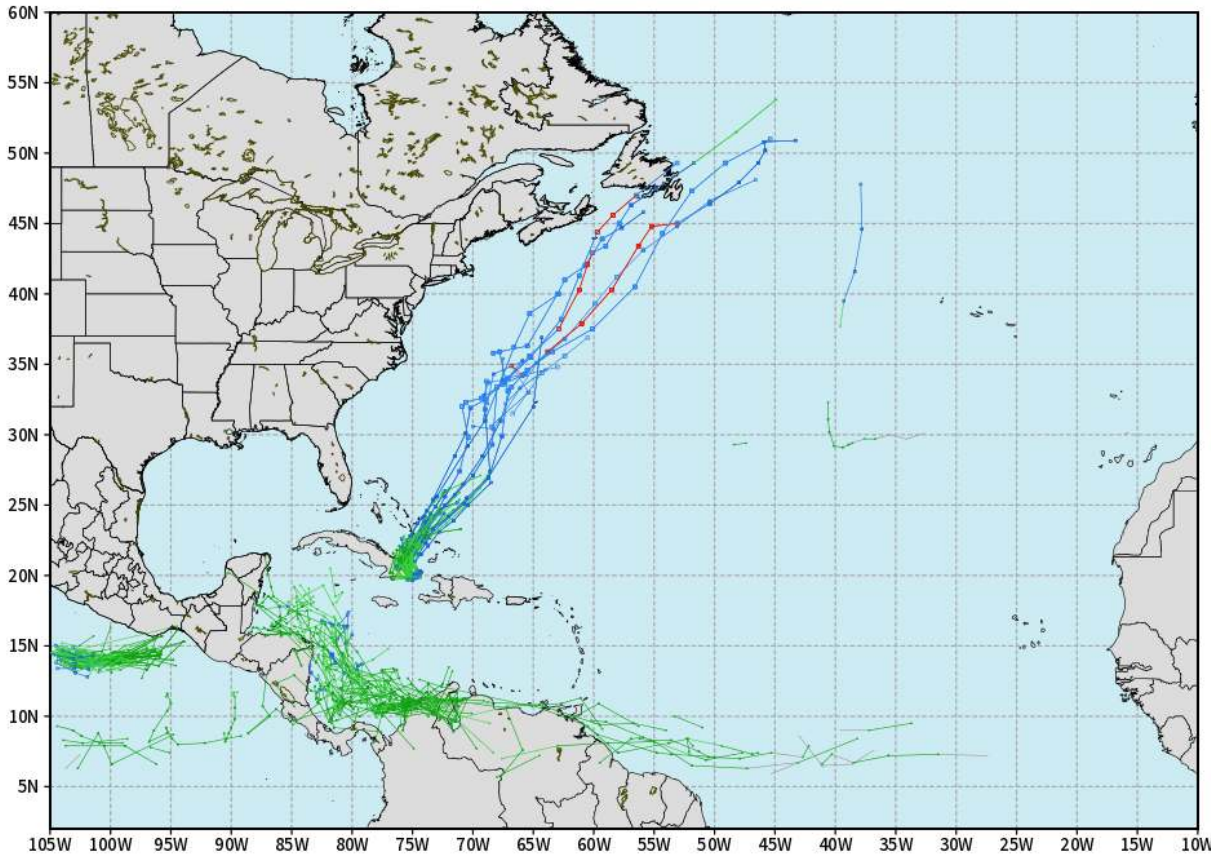
TIMEFRAME DISCUSSED	THREAT
3 AM – 8 AM TUE	Low

Houston Pilots Tropical Update

European Tropical Tracks - Next 10 Days

ECMWF ATLANTIC EPS Cyclone Locations --> Next [10-days]
INIT: 00Z21OCT2024 --> UNTIL 00Z31OCT2024

o-o ENSEMBLE MEAN
o-o 1000 - 1010 hPa
o-o 980 - 999 hPa
o-o 960 - 979 hPa
o-o 950 - 959 hPa
o-o < 950 hPa



weathermodels.com

Tropical Storm Oscar currently sits in the eastern Caribbean and it is expected to turn back out to sea by TUE AM. Confidence is high on NO impacts to Houston.

We continue to favor no threats for Houston over the next 7 days.

Houston Pilots Visibility Chart (miles)



Forecast Confidence



Visibility	Mon 2 pm	Mon 3 pm	Mon 4 pm	Mon 5 pm	Mon 6 pm	Mon 7 pm	Mon 8 pm	Mon 9 pm	Mon 10 pm	Mon 11 pm	Tue 12 am	Tue 1 am	Tue 2 am	Tue 3 am	Tue 4 am	Tue 5 am	Tue 6 am	Tue 7 am	Tue 8 am	Tue 9 am	Tue 10 am	Tue 11 am	Tue 12 pm	Tue 1 pm
Houston Pilots N - 610 Bridge	10	10	10	10	10	10	10	10	10	10	10	10	10	10	10	10	10	10	7.9	6.9	10	10	10	10
Houston Pilots M - Kinder 1	10	10	10	10	10	10	10	10	10	10	10	10	10	10	10	10	10	10	7.9	6.9	10	10	10	10
Houston Pilots L - Greens Bayou	10	10	10	10	10	10	10	10	10	10	10	10	10	10	10	10	10	10	7.9	5.9	10	10	10	10
Houston Pilots K - Shell Crude	10	10	10	10	10	10	10	10	10	10	10	10	10	10	10	10	10	10	7.9	6.9	10	10	10	10
Houston Pilots J - Lynchburg Ferries	10	10	10	10	10	10	10	10	10	10	10	10	10	10	10	10	10	10	7.9	5.9	10	10	10	10
Houston Pilots I - Exxon 3	10	10	10	10	10	10	10	10	10	10	10	10	10	10	10	10	10	10	7.9	6.9	10	10	10	10
Houston Pilots H - Morgans Point	10	10	10	10	10	10	10	10	10	10	10	10	10	10	10	10	10	10	9	6.9	10	10	10	10
Houston Pilots G - 75/76	10	10	10	10	10	10	10	10	10	10	10	10	10	10	10	10	10	10	10	7.9	10	10	10	10
Houston Pilots F - 63/64	10	10	10	10	10	10	10	10	10	10	10	10	10	10	10	10	10	10	10	7.9	10	10	10	10
Houston Pilots E - 51/52	10	10	10	10	10	10	10	10	10	10	10	10	10	10	10	10	10	10	10	9	10	10	10	10
Houston Pilots D - 37/38	10	10	10	10	10	10	10	10	10	10	10	10	10	10	10	10	10	10	10	9	10	10	10	10
Houston Pilots C - 25/26	10	10	10	10	10	10	10	10	10	10	10	10	10	10	10	10	10	10	10	10	10	10	10	10
Houston Pilots B - 11/12	10	10	10	10	10	10	10	10	10	10	10	10	10	10	10	10	10	10	10	10	10	10	10	10
Houston Pilots A - 1 & 2 Bravo	10	10	10	10	10	10	10	10	10	10	10	10	10	10	10	10	10	10	10	10	10	10	10	10

NOTE: This is automated data that may/may not agree with the official BAM thinking that's found on the daily slides or special visibility report slides. This data should be used as a guide only

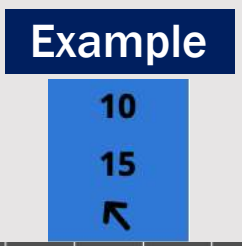
Houston Pilots Wind Chart



Sustained wind 10 Knots

Gusts 15 Knots

Wind from the SE



Wind	Mon 2 pm	Mon 3 pm	Mon 4 pm	Mon 5 pm	Mon 6 pm	Mon 7 pm	Mon 8 pm	Mon 9 pm	Mon 10 pm	Mon 11 pm	Tue 12 am	Tue 1 am	Tue 2 am	Tue 3 am	Tue 4 am	Tue 5 am	Tue 6 am	Tue 7 am	Tue 8 am	Tue 9 am	Tue 10 am	Tue 11 am	Tue 12 pm	Tue 1 pm	
Houston Pilots N - 610 Bridge	6 13 ↙	6 13 ↙	7 14 ↙	7 14 ↙	7 14 ↙	7 13 ↙	7 13 ↙	6 12 ↙	5 9 ↙	3 9 ↙	3 8 ↙	3 7 ↙	3 7 ↙	2 6 ↙	2 5 ↙	2 6 ↙	2 6 ↙	2 6 ↙	2 6 ↙	2 7 ↙	3 7 ↙	3 7 ↙	3 7 ↙	3 8 ↙	
Houston Pilots M - Kinder 1	6 13 ↙	7 13 ↙	7 14 ↙	7 14 ↙	7 14 ↙	7 13 ↙	6 13 ↙	6 12 ↙	5 9 ↙	3 9 ↙	3 8 ↙	3 7 ↙	3 7 ↙	2 6 ↙	2 5 ↙	2 6 ↙	2 6 ↙	2 6 ↙	2 6 ↙	2 6 ↙	3 7 ↙	3 7 ↙	3 7 ↙	3 8 ↙	
Houston Pilots L - Greens Bayou	6 13 ↙	7 13 ↙	7 14 ↙	7 14 ↙	7 14 ↙	7 13 ↙	6 13 ↙	6 10 ↙	5 9 ↙	3 9 ↙	3 8 ↙	3 7 ↙	3 7 ↙	2 6 ↙	2 5 ↙	2 6 ↙	2 6 ↙	2 6 ↙	2 6 ↙	2 7 ↙	3 7 ↙	3 7 ↙	3 8 ↙	3 8 ↙	
Houston Pilots K - Shell Crude	6 13 ↙	7 13 ↙	7 14 ↙	8 14 ↙	7 14 ↙	7 13 ↙	6 13 ↙	6 10 ↙	5 9 ↙	3 9 ↙	3 8 ↙	3 7 ↙	3 7 ↙	2 6 ↙	2 5 ↙	2 6 ↙	2 6 ↙	2 6 ↙	2 6 ↙	2 6 ↙	3 7 ↙	3 7 ↙	3 8 ↙	5 8 ↙	
Houston Pilots J - Lynchburg Ferries	6 13 ↙	6 13 ↙	7 13 ↙	7 13 ↙	7 14 ↙	6 13 ↙	6 13 ↙	5 10 ↙	3 9 ↙	3 8 ↙	3 7 ↙	2 7 ↙	2 7 ↙	2 6 ↙	2 5 ↙	1 5 ↙	1 5 ↙	2 5 ↙	2 6 ↙	2 6 ↙	2 6 ↙	3 7 ↙	3 7 ↙	3 8 ↙	3 8 ↙
Houston Pilots I - Exxon 3	8 14 ↙	9 14 ↙	9 15 ↙	10 15 ↙	9 15 ↙	9 14 ↙	8 13 ↙	8 12 ↙	8 10 ↙	7 10 ↙	6 9 ↙	6 8 ↙	6 8 ↙	6 7 ↙	5 7 ↙	5 7 ↙	5 7 ↙	5 7 ↙	5 7 ↙	5 7 ↙	5 7 ↙	5 7 ↙	6 8 ↙	6 9 ↙	6 10 ↙
Houston Pilots H - Morgans Point	8 14 ↙	9 14 ↙	9 15 ↙	10 15 ↙	9 15 ↙	9 14 ↙	8 13 ↙	8 12 ↙	8 10 ↙	7 9 ↙	6 9 ↙	6 9 ↙	6 8 ↙	6 8 ↙	5 8 ↙	5 7 ↙	5 7 ↙	5 7 ↙	5 7 ↙	5 7 ↙	5 7 ↙	5 8 ↙	6 9 ↙	6 9 ↙	6 10 ↙
Houston Pilots G - 75/76	9 14 ↙	9 15 ↙	10 15 ↙	10 16 ↙	10 15 ↙	10 15 ↙	9 14 ↙	8 13 ↙	8 12 ↙	8 12 ↙	8 10 ↙	8 10 ↙	8 10 ↙	7 9 ↙	6 9 ↙	6 9 ↙	6 8 ↙	6 7 ↙	6 7 ↙	6 8 ↙	6 8 ↙	6 9 ↙	6 10 ↙	6 12 ↙	
Houston Pilots F - 63/64	8 14 ↙	8 15 ↙	9 15 ↙	9 16 ↙	9 15 ↙	9 14 ↙	8 13 ↙	8 12 ↙	8 12 ↙	8 12 ↙	8 10 ↙	8 10 ↙	8 10 ↙	7 9 ↙	6 9 ↙	6 9 ↙	6 8 ↙	6 7 ↙	6 7 ↙	6 8 ↙	6 8 ↙	6 9 ↙	6 10 ↙	6 12 ↙	
Houston Pilots E - 51/52	9 15 ↙	9 15 ↙	9 15 ↙	9 16 ↙	9 15 ↙	9 14 ↙	8 13 ↙	8 12 ↙	8 12 ↙	8 12 ↙	8 10 ↙	8 10 ↙	8 10 ↙	7 9 ↙	6 9 ↙	6 8 ↙	6 8 ↙	5 7 ↙	5 7 ↙	6 8 ↙	6 8 ↙	6 8 ↙	6 10 ↙	6 12 ↙	
Houston Pilots D - 37/38	9 15 ↙	9 15 ↙	9 15 ↙	9 15 ↙	9 15 ↙	8 14 ↙	8 13 ↙	8 12 ↙	8 12 ↙	8 12 ↙	8 12 ↙	8 12 ↙	8 12 ↙	7 12 ↙	6 12 ↙	6 12 ↙	6 12 ↙	5 12 ↙	5 12 ↙	6 12 ↙	6 12 ↙	6 12 ↙	6 10 ↙	6 12 ↙	
Houston Pilots C - 25/26	10 16 ↙	9 15 ↙	9 15 ↙	9 15 ↙	9 15 ↙	8 14 ↙	8 13 ↙	8 12 ↙	8 12 ↙	8 12 ↙	8 12 ↙	8 12 ↙	8 12 ↙	7 10 ↙	6 9 ↙	6 9 ↙	6 8 ↙	6 8 ↙	5 8 ↙	5 8 ↙	6 8 ↙	6 8 ↙	6 9 ↙	6 12 ↙	
Houston Pilots B - 11/12	10 16 ↙	9 15 ↙	9 15 ↙	9 15 ↙	8 15 ↙	8 13 ↙	8 13 ↙	7 12 ↙	7 12 ↙	7 12 ↙	7 12 ↙	7 12 ↙	7 12 ↙	6 10 ↙	6 9 ↙	6 9 ↙	6 8 ↙	5 8 ↙	5 8 ↙	5 8 ↙	6 8 ↙	6 8 ↙	6 9 ↙	6 12 ↙	
Houston Pilots A - 1 & 2 Bravo	10 16 ↙	10 16 ↙	10 15 ↙	9 16 ↙	9 15 ↙	9 14 ↙	8 13 ↙	8 13 ↙	8 13 ↙	8 13 ↙	8 13 ↙	8 13 ↙	8 13 ↙	8 13 ↙	8 12 ↙	8 12 ↙	7 10 ↙	6 9 ↙	6 9 ↙	6 9 ↙	6 9 ↙	6 10 ↙	7 10 ↙	7 12 ↙	

NOTE: This is automated data that may/may not agree with the official BAM thinking that's found on the daily slides. This data should be used as a guide only.

Houston Pilots: MON. 10/21/2024



Forecast Discussion

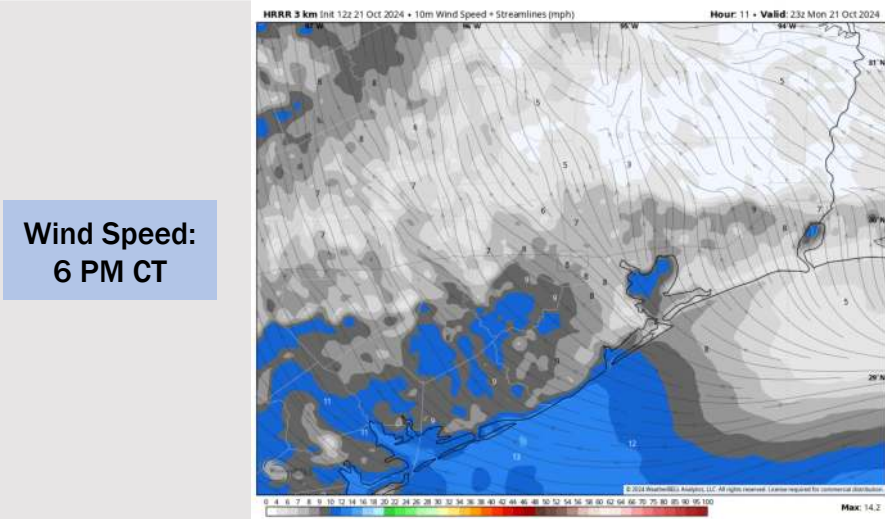
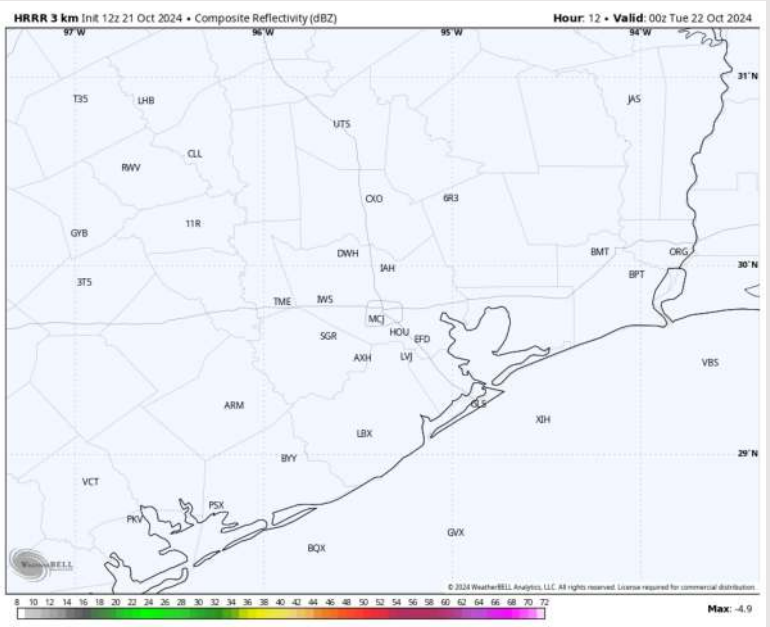
Precip: Favoring dry conditions for the remainder of the day.

Wind: Winds will be out of the SE for the rest of the day. **N of Morgan's Point:** Winds will be at 3 – 8 kts through the rest of the day. **S of Morgan's Point:** Winds at 6 – 11 kts for the remainder of the day.

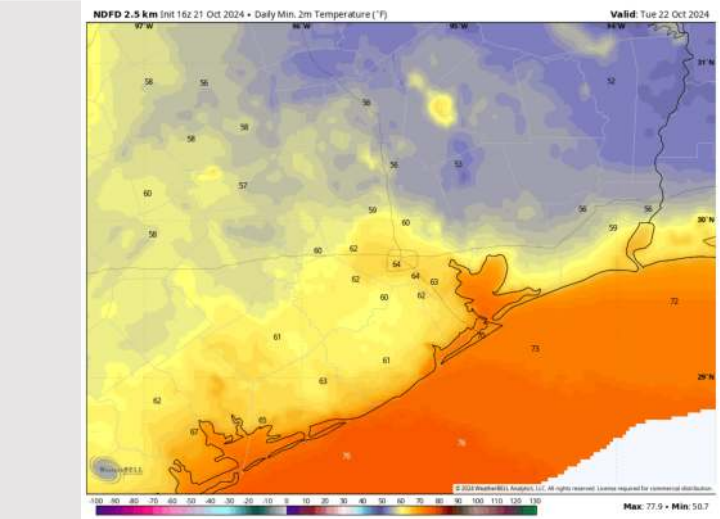
Low Temps: **N of Morgan's Point:** Lower to mid 60s F. **S of Morgan's Point:** Upper 60s F to near 70 F.

Visibility: Fog will be possible for Stations N. of Morgan's Point TUE AM, reducing visibilities to <5 miles.

Precip Image: 7 PM CT



Wind Speed:
6 PM CT



Low Temps
TUE AM

Houston Pilots: TUE. 10/22/2024



Forecast Discussion

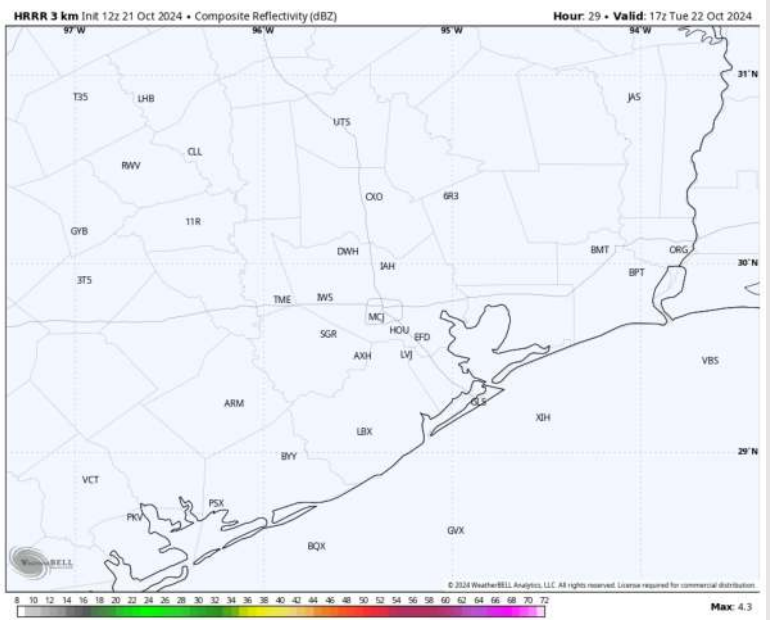
Precip: Favoring dry conditions for Tuesday.

Wind: Winds will be generally out of the E/SE for all of Tuesday. **N of Morgan's Point:** Winds will be at 3 – 7 kts through the day. **S of Morgan's Point:** Winds will be at 5 – 10 kts through the day.

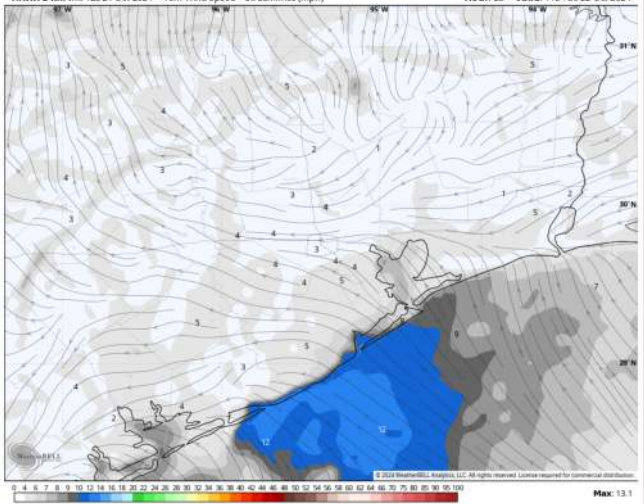
High Temps: **N of Morgan's Point:** Mid 80s F. **S of Morgan's Point:** Upper 70s F to near 80 F.

Visibility: Fog will be possible TUE AM for Stations N. of Morgan's Point, reducing visibilities to <5 miles.

Precip Image: 12 PM CT

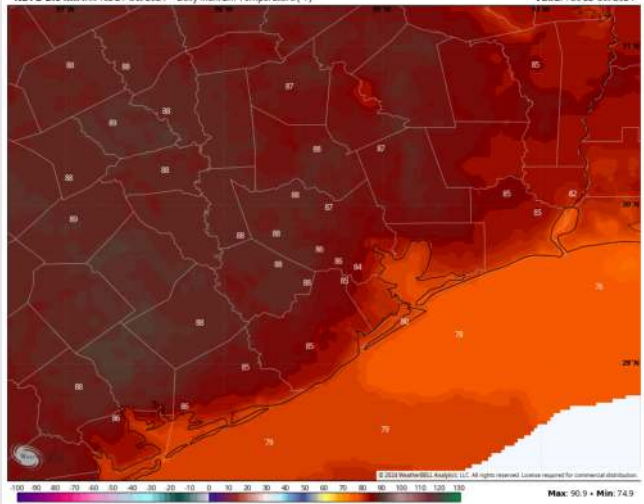


HRRR 3 km Init 12z 21 Oct 2024 • 10m Wind Speed + Streamlines (mph) Hour: 23 • Valid: 11z Tue 22 Oct 2024



Wind Speed
5 AM CT

NDFD 2.5 km Init 16z 21 Oct 2024 • Daily Max, 2m Temperature (°F) Valid: Tue 22 Oct 2024



High Temps
Tuesday

Forecast Discussion

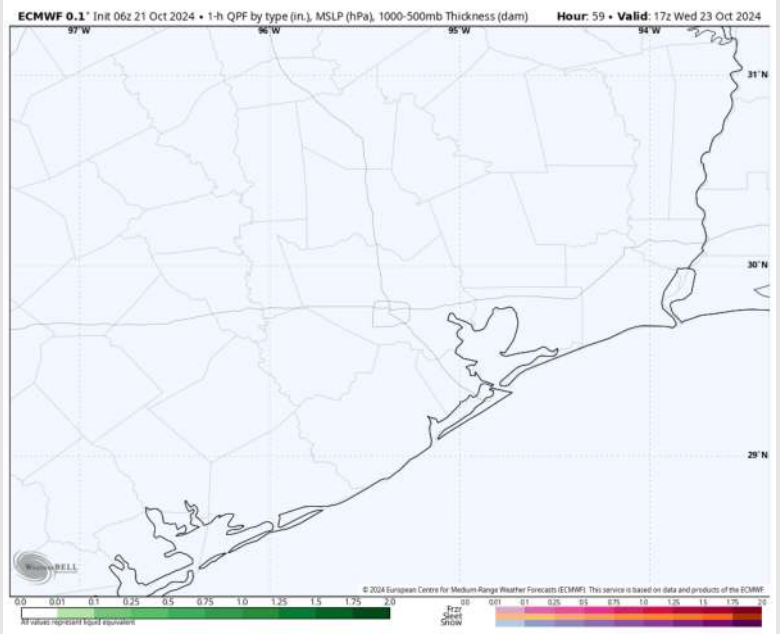
Precip: Favoring dry conditions for Wednesday.

Wind: Winds will be generally out of the E/SE on Wednesday.
N of Morgan's Point: Winds will be at 2 – 7 kts throughout the day.
S of Morgan's Point: Winds will be at 4 – 9 kts throughout the day.

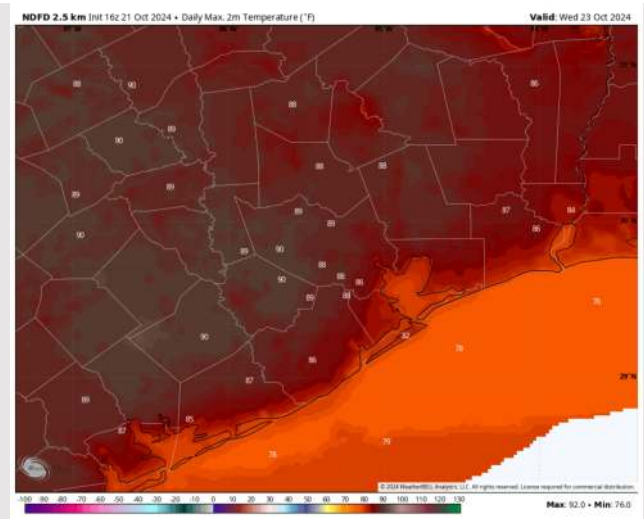
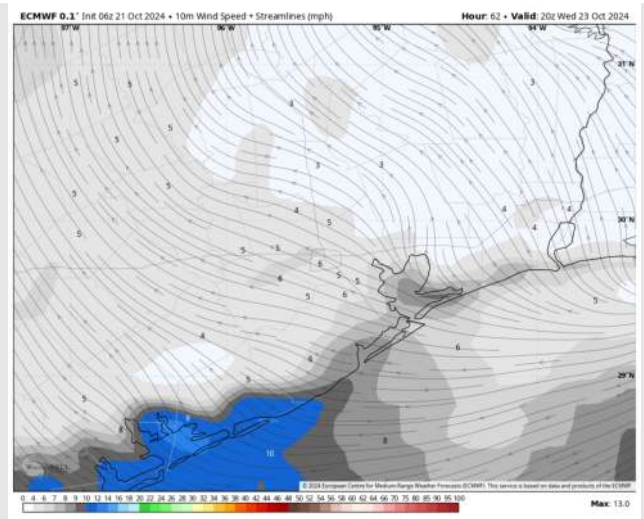
High Temps: **N of Morgan's Point:** Upper 80s F. **S of Morgan's Point:** Upper 70s to Low 80s F.

Visibility: Favoring fog reducing visibilities to <2 miles for Stations N of Morgan's Point WED AM.

Precip Image: 12 PM CT

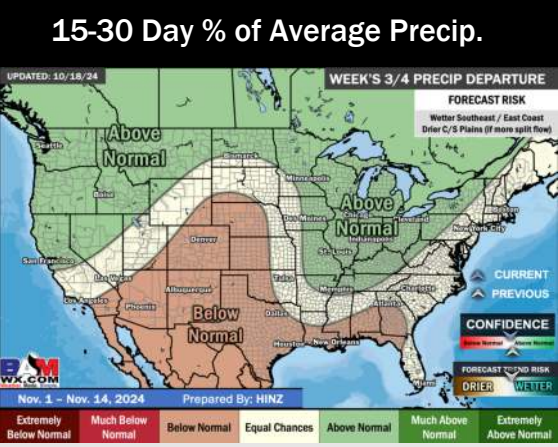
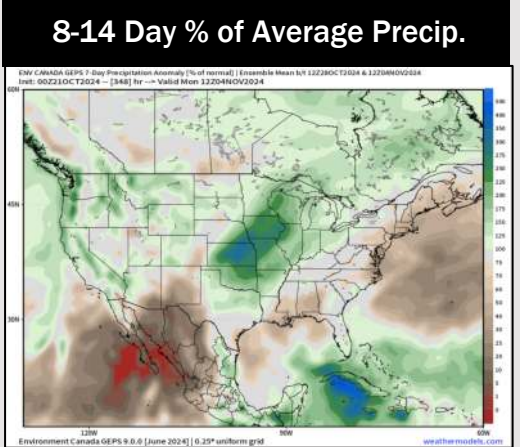
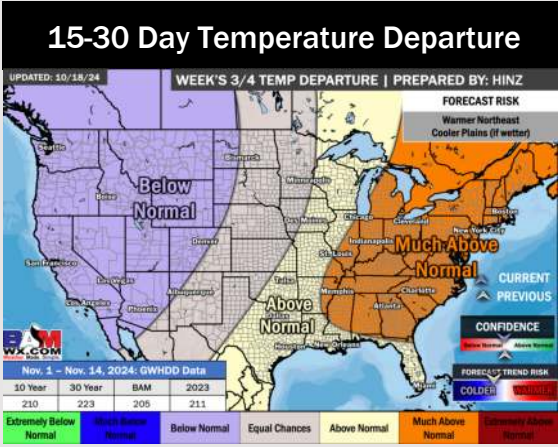
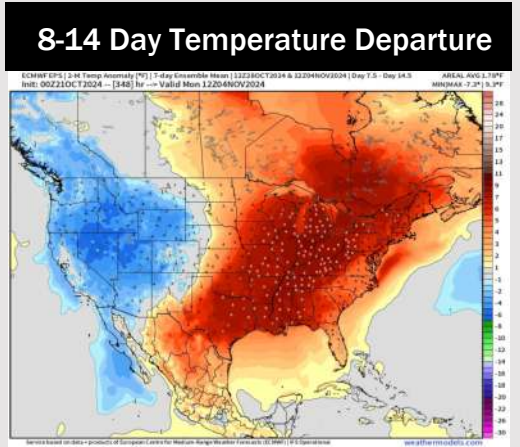
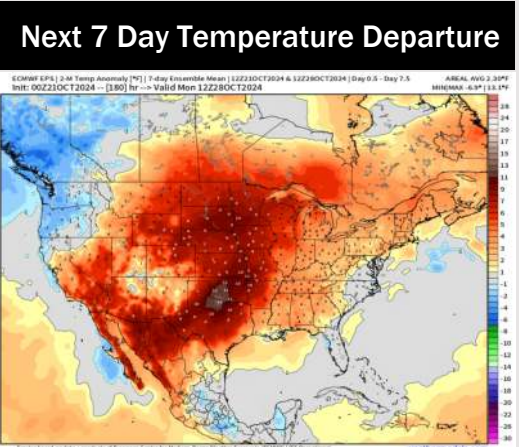


Wind Speed:
3 PM CT



High Temps
Wednesday

Houston Pilots: 10/21/24



- Temps are expected to be above normal for the week 1 timeframe. Favoring dry conditions through the week 1 timeframe.
- Above normal temperatures are favored for week 2. Favoring precipitation to be near normal.
- Above normal temperatures and below normal precipitation chances are expected for the weeks 3/4 timeframe.