

# Houston Pilots Forecast Package



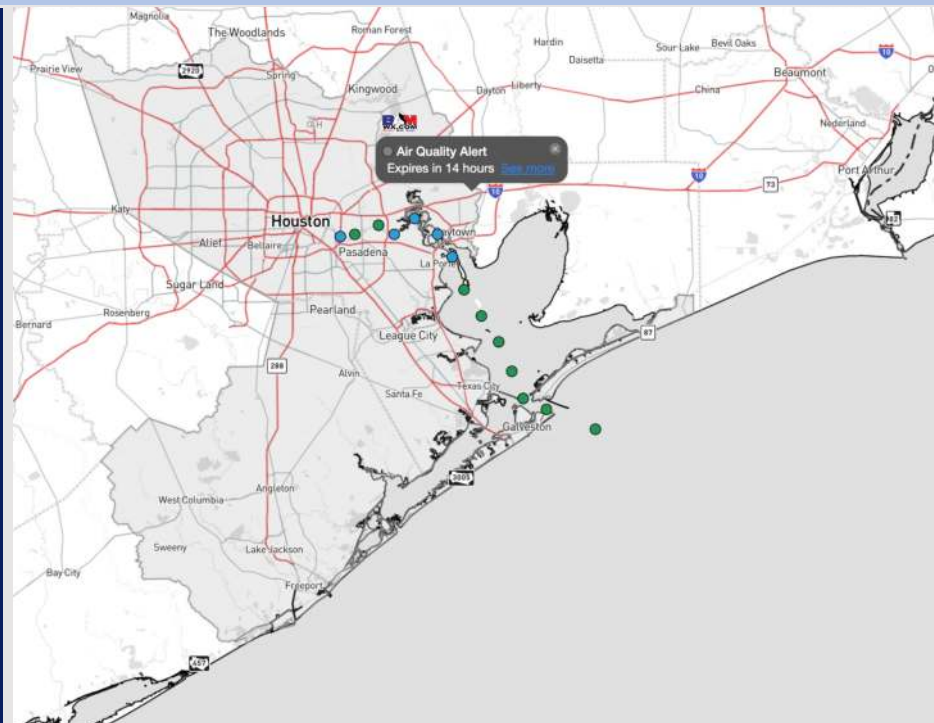
Updated: 10:45 PM CT

Wednesday, October 2, 2024

Forecaster: John Kemper

## Weather Headlines

- Periodic Gusts of up to 20 – 25 kts will be in play through Saturday PM. See daily slides below for more!
- Not anticipating any visibility concerns for stations.
- Next potential system to develop ~ end of this weekend. No impacts for Houston favored! See Latest Tropical Update below!



Current Radar: 10:35 PM CT



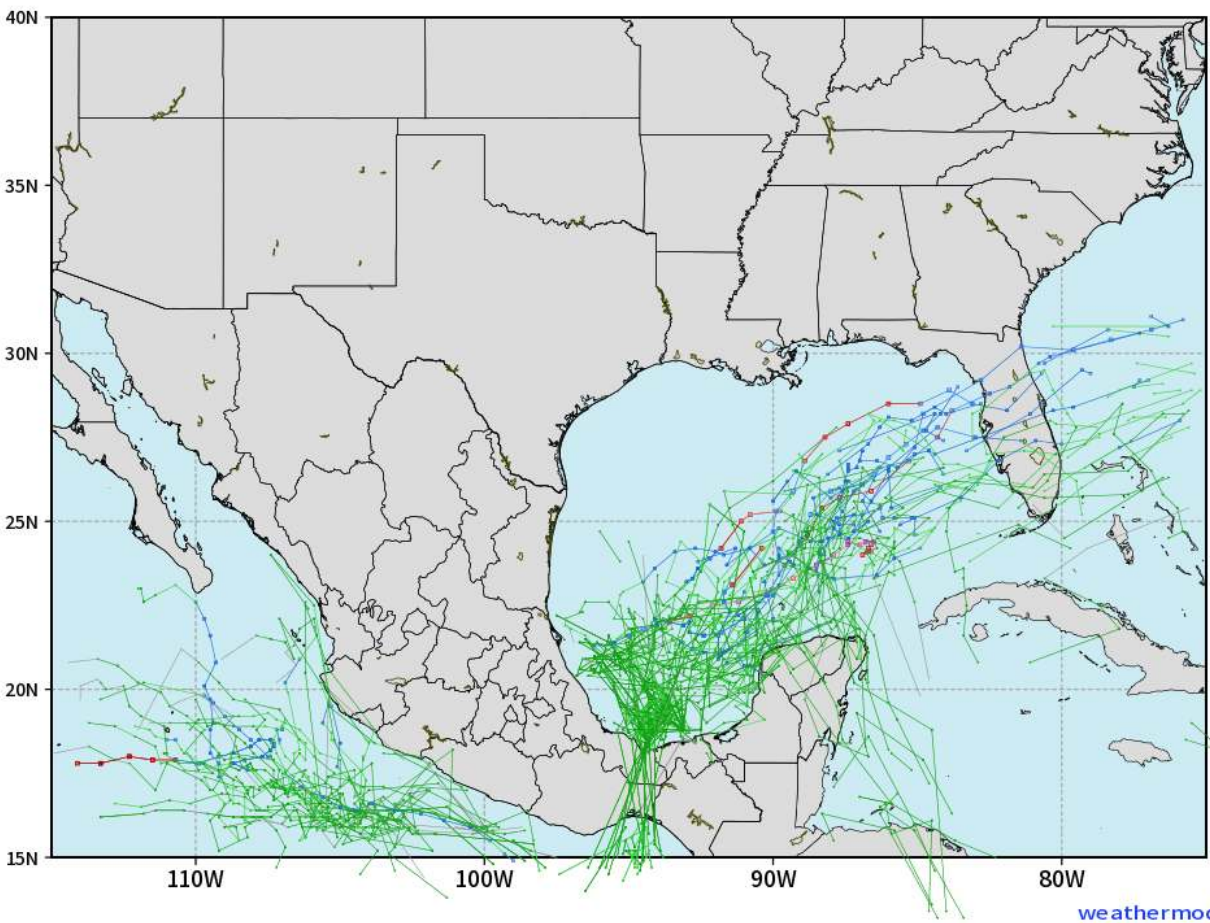
As always, please do not hesitate to reach out to us with any forecast questions via the chat option on Clarity or our on-call number, **(317)-560-8122** press **1** for forecast questions.

# Houston Pilots Tropical Update

## European Model Next 10 Days - Tropical Tracks

ECMWF GULF EPS Cyclone Locations --> Next [10-days]  
INIT: 12Z02OCT2024 --> UNTIL 12Z12OCT2024

o-o ENSEMBLE MEAN  
o-o 1000 - 1010 hPa  
o-o 980 - 999 hPa  
o-o 960 - 979 hPa  
o-o 950 - 959 hPa  
o-o < 950 hPa



Models remain consistent in a tropical system developing near the Yucatan Peninsula and pushing eastward towards Florida. At least a low-end tropical depression / storm will be in play towards the end of the weekend.

No impacts are favored for Houston at this time!

# Houston Pilots Tropical Update

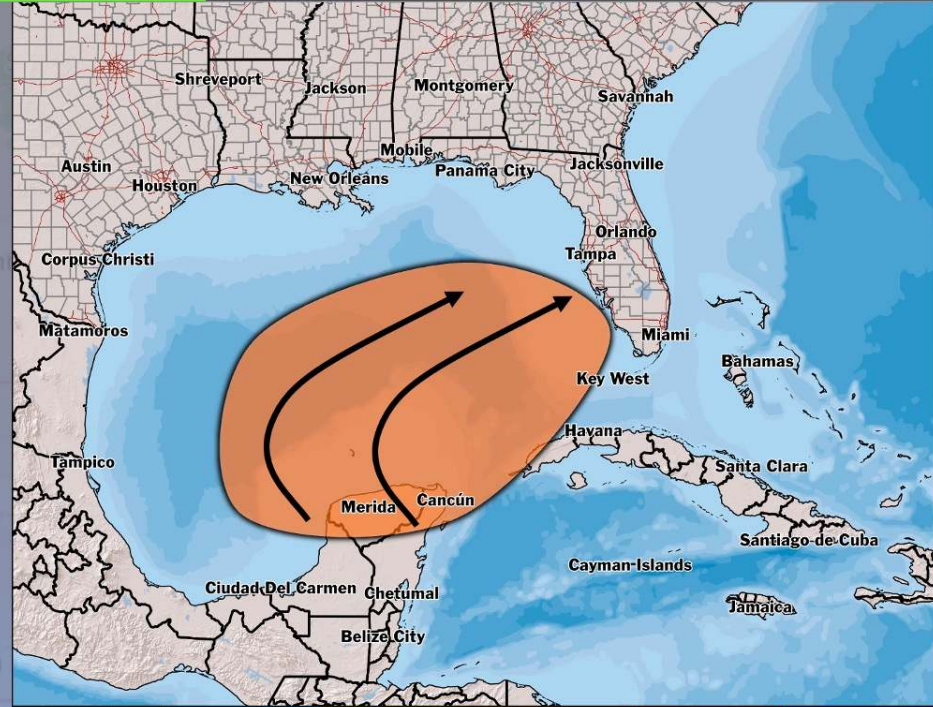


## Next Tropical Disturbance

TROPICAL INSIGHT

8 PM ET Wednesday, October 2, 2024

Forecaster: Kemper



Formation Chances	0 - 20%	20%-40%	40%-60%	60%-80%	80% - 100%
-------------------	---------	---------	---------	---------	------------

**TIMING:** ~Oct 6th – 10th

### FORECAST NOTES:

- ✓ Slow development of tropical system favored after / on the 6<sup>th</sup>.
- ✓ System will likely directly impact Florida Peninsula, with periods of heavy rain favored.
- ✓ While intensity uncertain, coastal areas should be prepared for additional updates as we get closer to the weekend.



# Houston Pilots Visibility Chart (miles)



## Forecast Confidence



Visibility	Wed 11 pm	Thu 12 am	Thu 1 am	Thu 2 am	Thu 3 am	Thu 4 am	Thu 5 am	Thu 6 am	Thu 7 am	Thu 8 am	Thu 9 am	Thu 10 am	Thu 11 am	Thu 12 pm	Thu 1 pm	Thu 2 pm	Thu 3 pm	Thu 4 pm	Thu 5 pm	Thu 6 pm	Thu 7 pm	Thu 8 pm	Thu 9 pm	Thu 10 pm
Houston Pilots N - 610 Bridge	10	10	10	10	10	10	10	10	10	10	10	10	10	10	10	10	10	10	10	10	10	10	10	10
Houston Pilots M - Kinder 1	10	10	10	10	10	10	10	10	10	10	10	10	10	10	10	10	10	10	10	10	10	10	10	10
Houston Pilots L - Greens Bayou	10	10	10	10	10	10	10	10	10	10	10	10	10	10	10	10	10	10	10	10	10	10	10	10
Houston Pilots K - Shell Crude	10	10	10	10	10	10	10	10	10	10	10	10	10	10	10	10	10	10	10	10	10	10	10	10
Houston Pilots J - Lynchburg Ferries	10	10	10	10	10	10	10	10	10	10	10	10	10	10	10	10	10	10	10	10	10	10	10	10
Houston Pilots I - Exxon 3	10	10	10	10	10	10	10	10	10	10	10	10	10	10	10	10	10	10	10	10	10	10	10	10
Houston Pilots H - Morgans Point	10	10	10	10	10	10	10	10	10	10	10	10	10	10	10	10	10	10	10	10	10	10	10	10
Houston Pilots G - 75/76	10	10	10	10	10	10	10	10	10	10	10	10	10	10	10	10	10	10	10	10	10	10	10	10
Houston Pilots F - 63/64	10	10	10	10	10	10	10	10	10	10	10	10	10	10	10	10	10	10	10	10	10	10	10	10
Houston Pilots E - 51/52	10	10	10	10	10	10	10	10	10	10	10	10	10	10	10	10	10	10	10	10	10	10	10	10
Houston Pilots D - 37/38	10	10	10	10	10	10	10	10	10	10	10	10	10	10	10	10	10	10	10	10	10	10	10	10
Houston Pilots C - 25/26	10	10	10	10	10	10	10	10	10	10	10	10	10	10	10	10	10	10	10	10	10	10	10	10
Houston Pilots B - 11/12	10	10	10	10	10	10	10	10	10	10	10	10	10	10	10	10	10	10	10	10	10	10	10	10
Houston Pilots A - 1 & 2 Bravo	10	10	10	10	10	10	10	10	10	10	10	10	10	10	10	10	10	10	10	10	10	10	10	10

**NOTE: This is automated data that may/may not agree with the official BAM thinking that's found on the daily slides or special visibility report slides. This data should be used as a guide only**

# Houston Pilots Wind Chart



## Forecast Confidence



Sustained wind 10 Knots  
Gusts 15 Knots  
Wind from the SE

Example  
10  
15  
↙

Wind	Wed 11 pm	Thu 12 am	Thu 1 am	Thu 2 am	Thu 3 am	Thu 4 am	Thu 5 am	Thu 6 am	Thu 7 am	Thu 8 am	Thu 9 am	Thu 10 am	Thu 11 am	Thu 12 pm	Thu 1 pm	Thu 2 pm	Thu 3 pm	Thu 4 pm	Thu 5 pm	Thu 6 pm	Thu 7 pm	Thu 8 pm	Thu 9 pm	Thu 10 pm	
Houston Pilots N - 610 Bridge	3 ↑	3 ↑	2 ↑	1 ↑	1 ↓	2 ↓	2 ↓	2 ↓	3 ↓	3 ↓	3 ↓	3 ↓	5 ↓	6 ↓	6 ↓	6 ↓	7 ↓	7 ↓	7 ↓	7 ↓	7 ↓	7 ↓	6 ↓	5 ↓	
Houston Pilots M - Kinder 1	3 ↑	3 ↑	2 ↑	1 ↑	1 ←	2 ↓	2 ↓	2 ↓	3 ↓	3 ↓	3 ↓	3 ↓	5 ↓	6 ↓	6 ↓	6 ↓	7 ↓	7 ↓	8 ↓	7 ↓	7 ↓	6 ↓	6 ↓	5 ↓	
Houston Pilots L - Greens Bayou	3 ↑	2 ↑	2 ↑	1 ↑	1 ←	2 ↓	2 ↓	2 ↓	3 ↓	3 ↓	3 ↓	3 ↓	5 ↓	6 ↓	6 ↓	6 ↓	7 ↓	7 ↓	7 ↓	7 ↓	7 ↓	7 ↓	6 ↓	6 ↓	3 ↓
Houston Pilots K - Shell Crude	3 ↑	2 ↑	2 ↑	1 ↑	1 ←	2 ↓	2 ↓	3 ↓	3 ↓	3 ↓	3 ↓	5 ↓	5 ↓	6 ↓	6 ↓	6 ↓	7 ↓	7 ↓	7 ↓	7 ↓	7 ↓	7 ↓	6 ↓	5 ↓	3 ↓
Houston Pilots J - Lynchburg Ferries	3 ↑	2 ↑	1 ↑	1 ←	1 ←	2 ↓	2 ↓	2 ↓	3 ↓	3 ↓	3 ↓	3 ↓	5 ↓	5 ↓	6 ↓	6 ↓	6 ↓	7 ↓	7 ↓	7 ↓	7 ↓	6 ↓	6 ↓	5 ↓	3 ↓
Houston Pilots I - Exxon 3	6 ↑	6 ↑	5 ↑	5 ←	5 ←	5 ↓	6 ↓	6 ↓	6 ↓	7 ↓	7 ↓	7 ↓	7 ↓	7 ↓	7 ↓	8 ↓	8 ↓	9 ↓	9 ↓	9 ↓	9 ↓	9 ↓	8 ↓	8 ↓	7 ↓
Houston Pilots H - Morgans Point	6 ↑	6 ↑	5 ↑	5 ←	5 ←	5 ↓	6 ↓	6 ↓	6 ↓	7 ↓	7 ↓	7 ↓	7 ↓	7 ↓	7 ↓	8 ↓	8 ↓	9 ↓	9 ↓	9 ↓	9 ↓	9 ↓	8 ↓	8 ↓	7 ↓
Houston Pilots G - 75/76	7 ↑	6 ↑	6 ↑	6 ←	6 ←	6 ↓	7 ↓	7 ↓	8 ↓	8 ↓	8 ↓	8 ↓	8 ↓	8 ↓	8 ↓	8 ↓	8 ↓	8 ↓	8 ↓	9 ↓	9 ↓	9 ↓	9 ↓	8 ↓	8 ↓
Houston Pilots F - 63/64	6 ↑	6 ↑	6 ↑	6 ←	6 ←	6 ↓	7 ↓	8 ↓	8 ↓	9 ↓	9 ↓	8 ↓	8 ↓	8 ↓	7 ↓	8 ↓	8 ↓	8 ↓	8 ↓	8 ↓	9 ↓	9 ↓	9 ↓	8 ↓	8 ↓
Houston Pilots E - 51/52	9 ↑	9 ↑	6 ↑	6 ←	6 ←	6 ↓	7 ↓	8 ↓	8 ↓	9 ↓	10 ↓	12 ↓	13 ↓	14 ↓	14 ↓	13 ↓	13 ↓	14 ↓	14 ↓	14 ↓	15 ↓	14 ↓	14 ↓	13 ↓	13 ↓
Houston Pilots D - 37/38	6 ↑	6 ↑	6 ↑	6 ←	6 ←	6 ↓	7 ↓	8 ↓	8 ↓	9 ↓	9 ↓	9 ↓	9 ↓	9 ↓	8 ↓	8 ↓	8 ↓	8 ↓	8 ↓	8 ↓	9 ↓	9 ↓	9 ↓	8 ↓	8 ↓
Houston Pilots C - 25/26	6 ↑	6 ↑	6 ↑	6 ←	6 ←	6 ↓	7 ↓	7 ↓	8 ↓	8 ↓	9 ↓	9 ↓	9 ↓	9 ↓	8 ↓	8 ↓	8 ↓	8 ↓	8 ↓	8 ↓	9 ↓	9 ↓	9 ↓	8 ↓	8 ↓
Houston Pilots B - 11/12	10 ↑	9 ↑	9 ↑	9 ←	9 ←	9 ↓	10 ↓	10 ↓	12 ↓	13 ↓	14 ↓	14 ↓	15 ↓	15 ↓	15 ↓	15 ↓	15 ↓	15 ↓	15 ↓	15 ↓	15 ↓	15 ↓	15 ↓	14 ↓	14 ↓
Houston Pilots A - 1 & 2 Bravo	7 ↑	7 ↑	7 ↑	6 ↑	7 ←	8 ↓	8 ↓	8 ↓	9 ↓	10 ↓	10 ↓	10 ↓	10 ↓	10 ↓	10 ↓	10 ↓	10 ↓	10 ↓	10 ↓	10 ↓	10 ↓	10 ↓	10 ↓	10 ↓	10 ↓

NOTE: This is automated data that may/may not agree with the official BAM thinking that's found on the daily slides. This data should be used as a guide only.

# Houston Pilots: THU. 10/3/2024



## Forecast Discussion

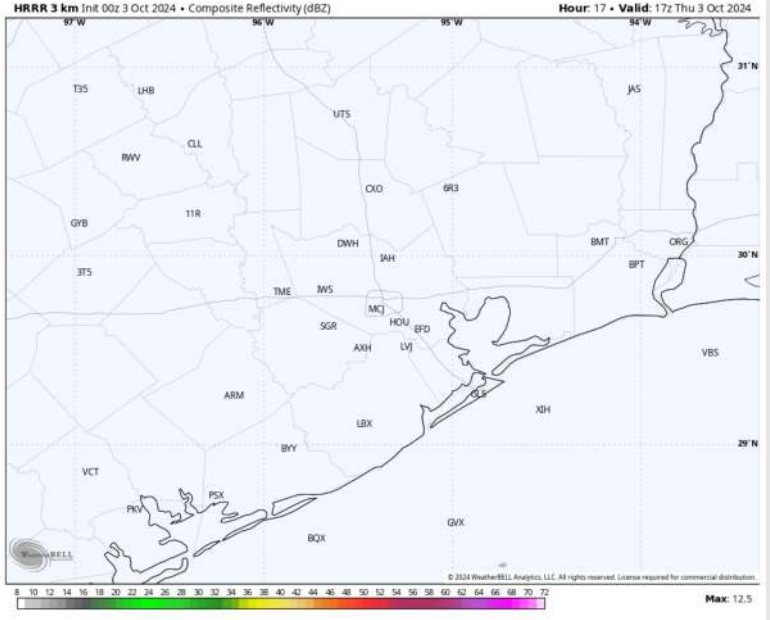
**Precip:** Favoring dry conditions for today.

**Wind:** Winds will start out of the E / ENE through 10AM before veering out of the E / ESE for the remainder of the day. **N of Morgan's Point:** Winds will be sustained at 4 – 7 kts for the entire day. **S of Morgan's Point:** Winds will be at 3 – 7 kts through 7AM, increasing to 7 – 12 kts for the remainder of the day. A few gusts of 20kts can't be ruled out for the Boarding Station from 9AM – 4PM.

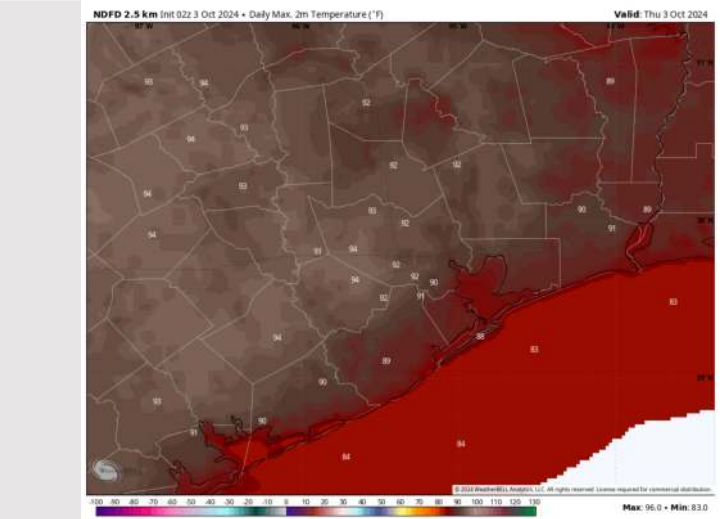
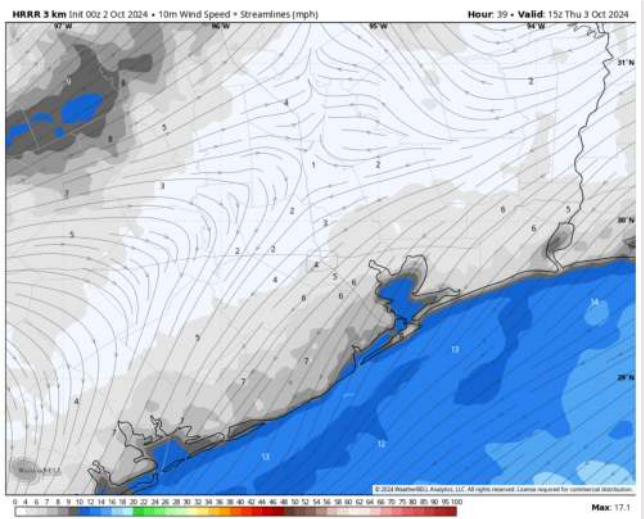
**High Temps:** **N of Morgan's Point:** Low 90's F. **S of Morgan's Point:** Mid to upper 80s F

**Visibility:** Not anticipating any visibility concerns for today.

## Precip Image: 12 PM CT



Wind Speed:  
10 AM CT



High Temps  
Today

# Houston Pilots: FRI. 10/4/2024



## Forecast Discussion

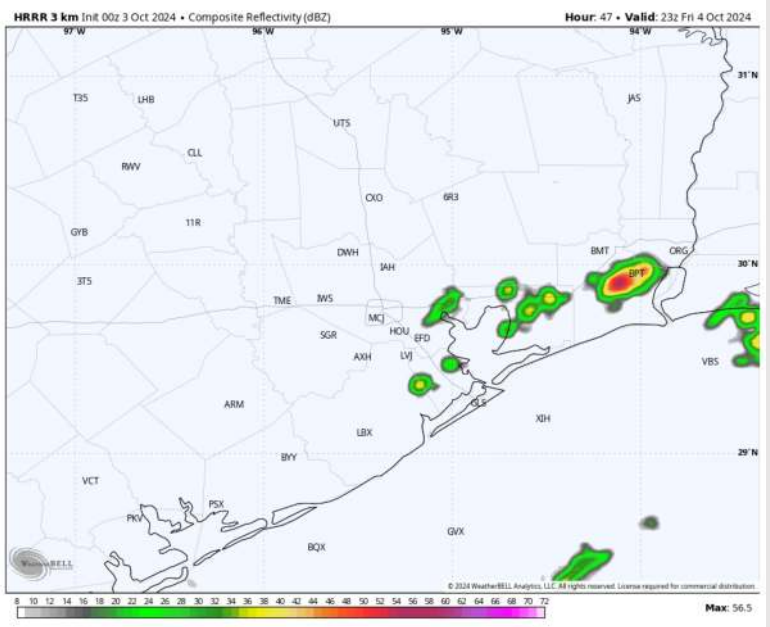
**Precip:** Favoring a few isolated showers/storms (20%) to work northwestward from 10 AM – 6 PM, impacting stations primarily S of Morgan’s Point.

**Wind:** Winds will start out of the ENE/NE through 6AM before shifting out of the ESE by 3PM. **N of Morgan’s Point:** Winds to start at 2 – 7 kts before increasing to 8 – 13 kts after 11AM for Friday. **S of Morgan’s Point:** Winds will be at 7 – 12 kts through 6AM before increasing to 14 – 18kts for the remainder of Friday. **Gusts may reach up to 25 kts between 10AM – 5PM for ALL stations.**

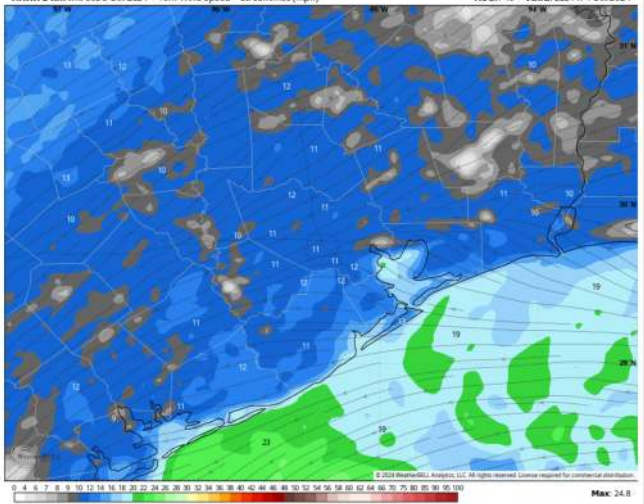
**High Temps:** **N of Morgan’s Point:** Low 90’s F. **S of Morgan’s Point:** Upper 80s F.

**Visibility:** Not anticipating any visibility concerns for Friday.

## Precip Image: 6 PM CT

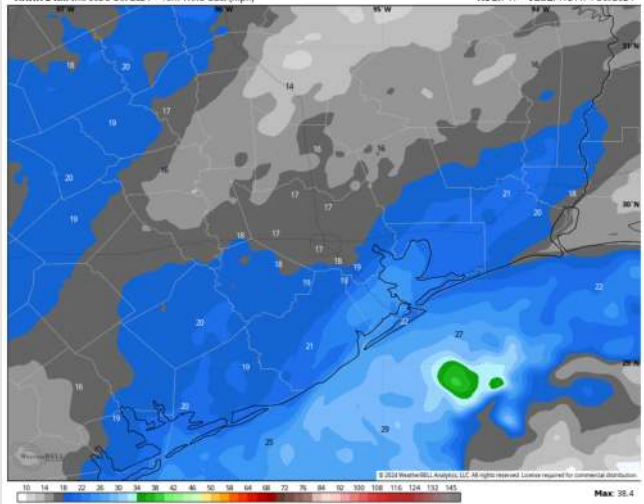


HRRR 3 km Init 00z 3 Oct 2024 • 10m Wind Speed + Streamlines (mph) Hour: 46 • Valid: 22z Fri 4 Oct 2024



Wind Speed  
5 PM CT

HRRR 3 km Init 00z 3 Oct 2024 • 10m Wind Gust (mph) Hour: 41 • Valid: 17z Fri 4 Oct 2024



Wind Gusts  
12 PM CT

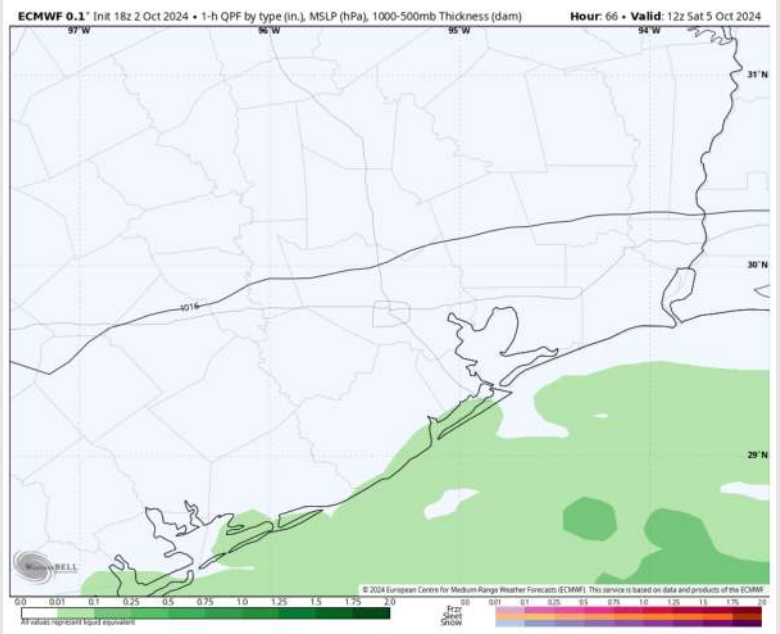
# Houston Pilots: SAT. 10/5/2024



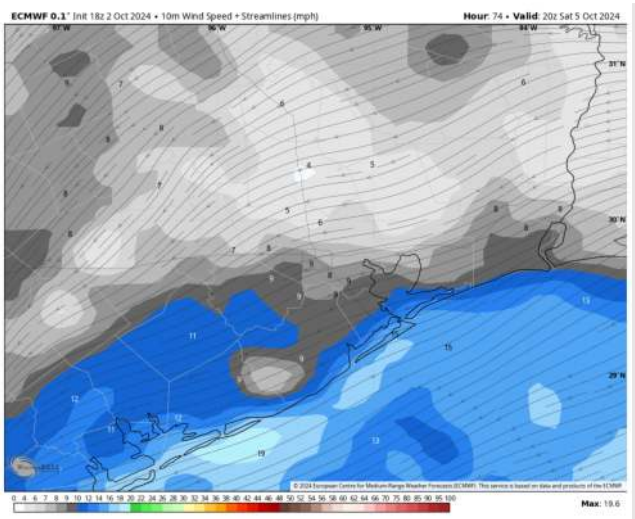
## Forecast Discussion

- Precip:** Scattered showers (30%) will be possible for all stations between 4AM – 4PM, with intermittent breaks throughout the day. Better coverage to remain S of Morgan’s Point.
- Wind:** Winds will be out of the ENE for all of Saturday. **N of Morgan’s Point:** Winds will be at 2 – 7 kts for the entire day. **S of Morgan’s Point:** Winds will be at 8 – 13 kts for the entire day. **Gusts of up to 20 - 25kts possible for the Boarding Station.**
- High Temps:** **N of Morgan’s Point:** Mid 80s F. **S of Morgan’s Point:** Mid 80s F.
- Visibility:** Not favoring any fog concerns for Saturday.

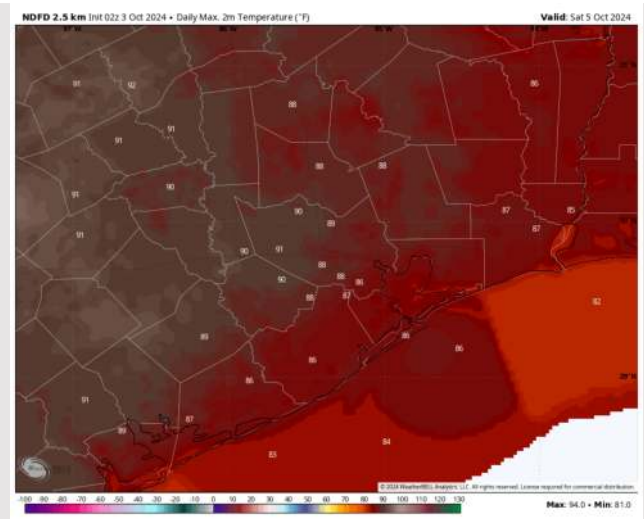
## Precip Image: 7 AM CT



Wind Speed:  
3 PM CT



High Temps  
Saturday

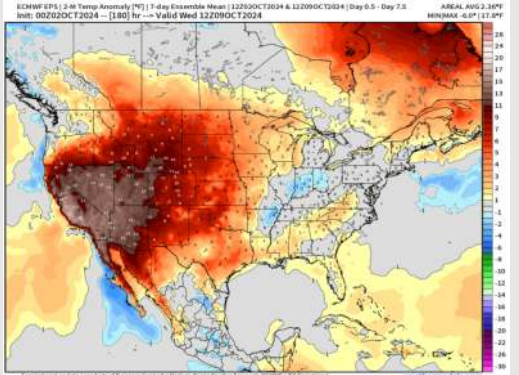




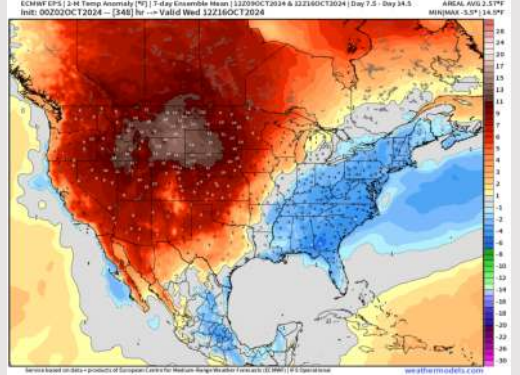
# Houston Pilots: 10/3/24



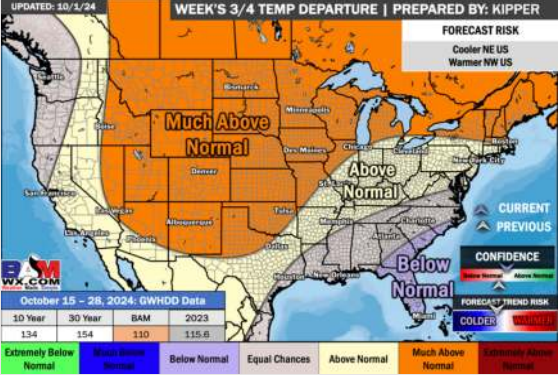
**Next 7 Day Temperature Departure**



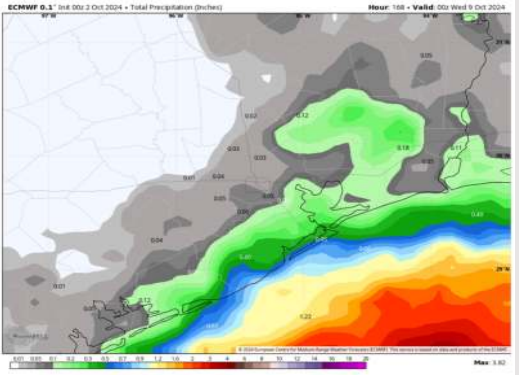
**8-14 Day Temperature Departure**



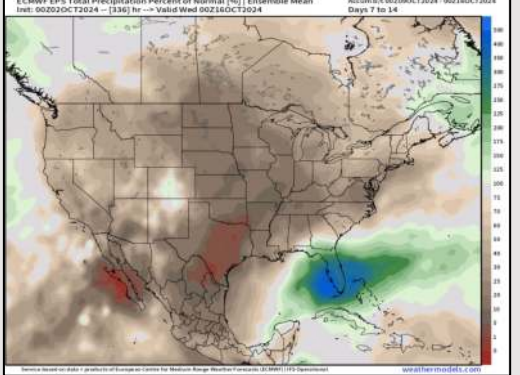
**15-30 Day Temperature Departure**



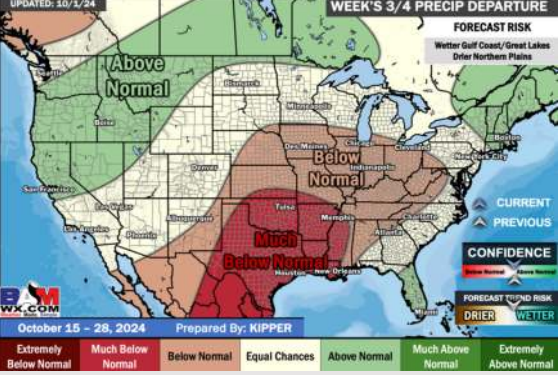
**Next 7 Day Total Precipitation**



**8-14 Day % of Average Precip.**



**15-30 Day % of Average Precip.**



- Temps are expected to be above normal for the week 1 timeframe. Favoring dry conditions through most of week 1 with rain chances increasing into the first weekend of Oct.
- Near normal temperatures are favored for week 2. Confidence is low on rain chances due to additional tropical risks for week 2.
- Near normal temperatures and much below normal precipitation chances are expected for the weeks 3/4 timeframe.