

# MIAMI DOLPHINS

9/25/24 – 9/27/24 Hurricane Helene Update  
Forecast Made: Wednesday, September 25, 2024



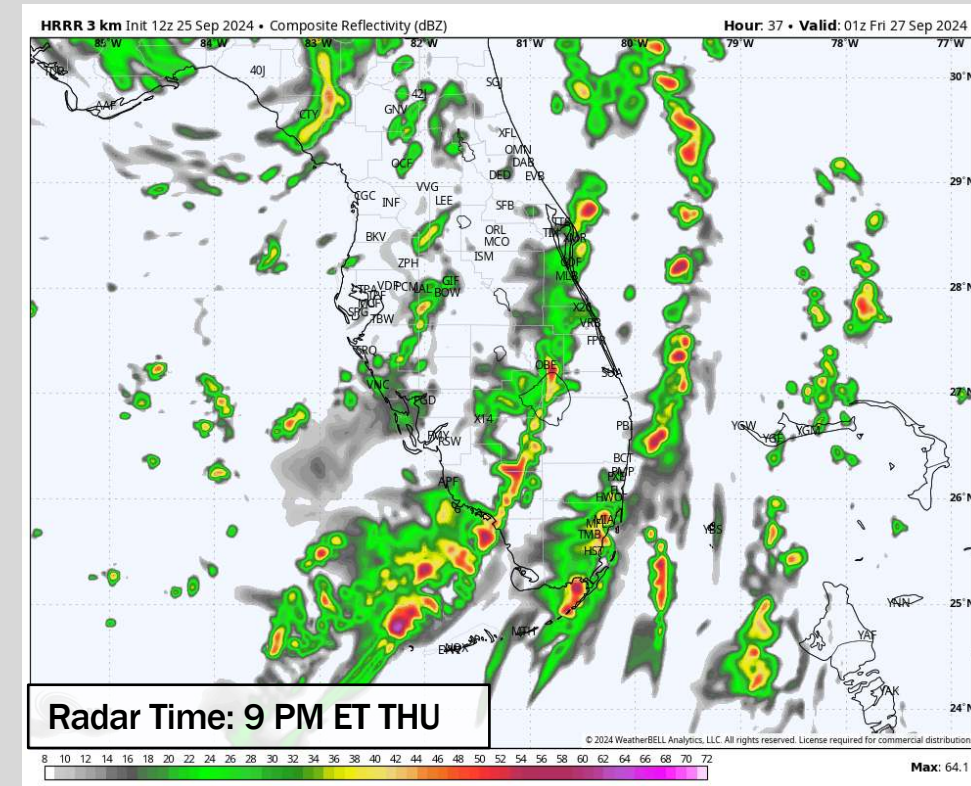
## Forecast Notes Through Friday AM (9/27/24)

**3PM WED – 7 AM THU:** Outer bands of Hurricane Helene will begin to work in from the S throughout the evening WED and then into the early morning THU. Chances will remain more scattered (30-40%) with breaks in precip possible. Risks will be for wind gusts of 40-50 MPH and an isolated tornado risk.

**7AM THU - 5 PM THU:** Coverage favored to become more isolated (20-30%) throughout the late morning and early evening. Larger dry gaps will be possible (1+ hour) however any cell will be capable of strong wind gusts of 35-45 MPH and an isolated tornado threat.

**5 PM THU – 12 PM FRI:** Increase to more widespread coverage (60-70%) of heavy rain and thunderstorms with Helene's trailing bands. Greatest risk favored for 6PM – 9PM THU. Coverage will slowly begin to decrease post 9PM and into the morning on FRI. With chances become more miss vs hit after 7AM on FRI.

## Thursday Evening Snapshot



## Wind Notes

Beginning at 11AM THU sustained winds of 25 – 35 MPH with wind gusts of 40-50 MPH will be possible through 12AM FRI.

## Storm Surge Notes

No major storm surge risks however couldn't rule out pockets of surge of 1ft at most near coastal locations

## Additional Notes

Timeframe of greatest threat is favored to be between 11AM THU through 7AM FRI for storm and wind impacts for the Miami Area