

# Houston Pilots Forecast Package



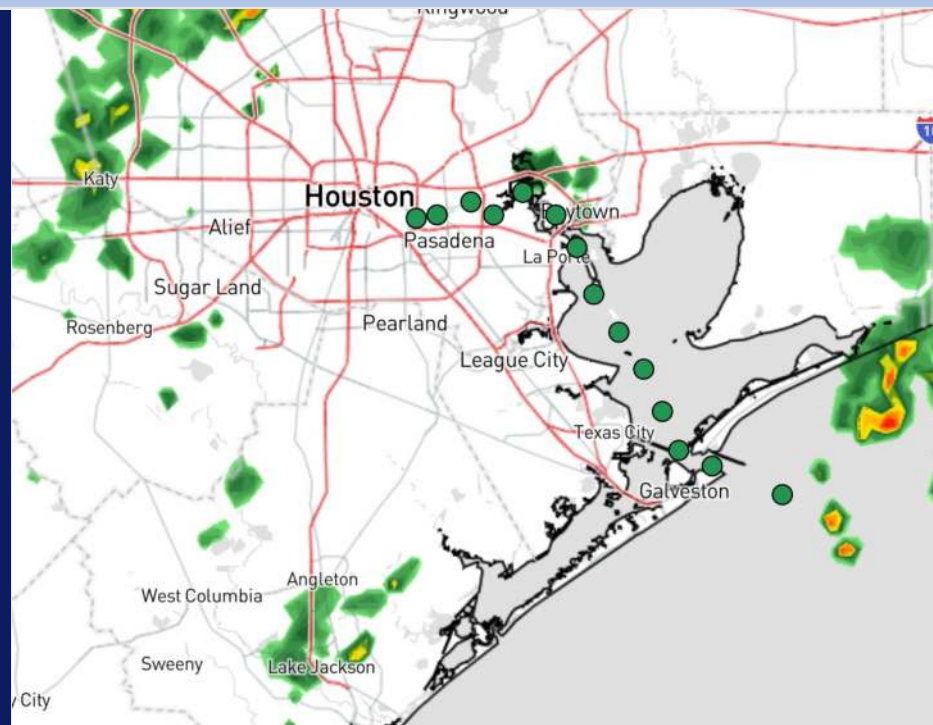
Updated: 1:30 PM CT

Sunday, September 1, 2024

Forecaster: Hope Kleitsch

## Weather Headlines

- Frequent periods of downpours / storms in play through the week, with **~20 - 25 kt gusts possible**.
- Monitoring a tropical wave as it works towards the Caribbean. Check tropical slides for more info.
- Not favoring any fog risks over the next few days.



Current Radar: 1:25 PM CT



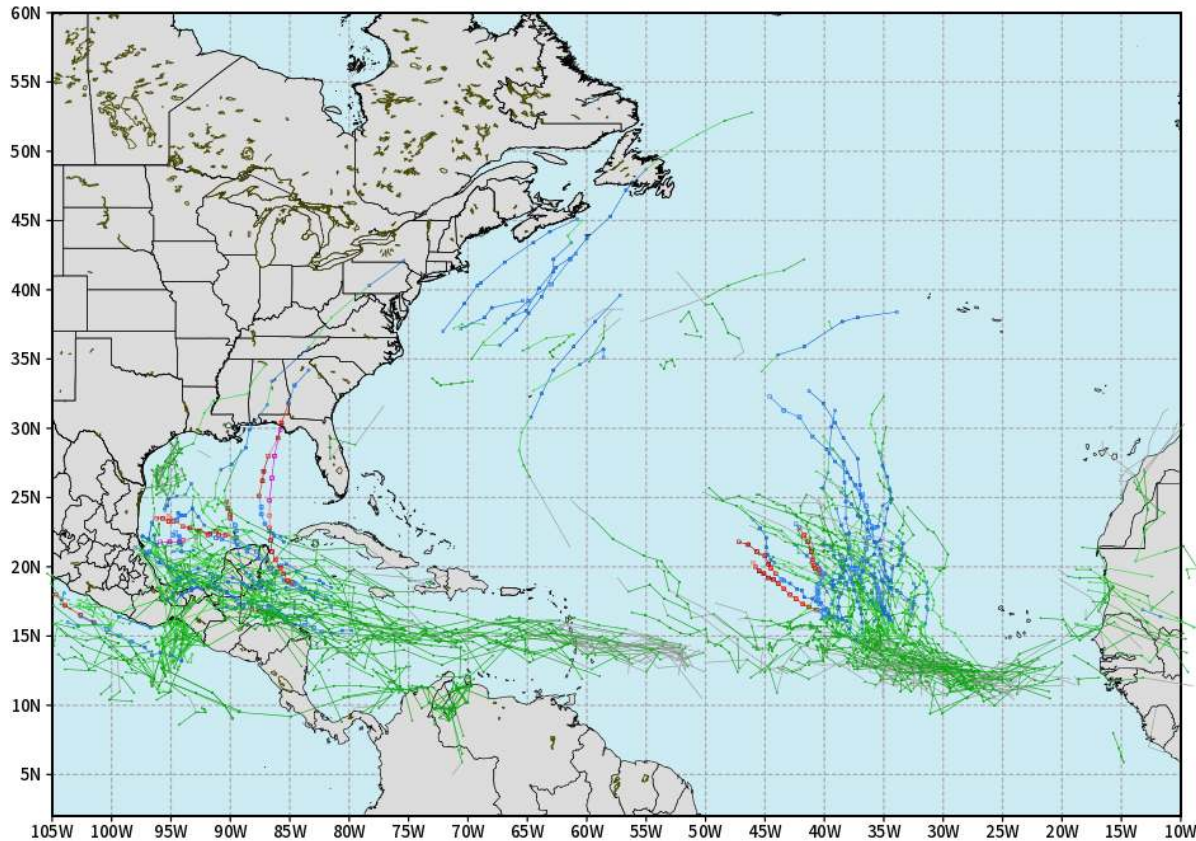
As always, please do not hesitate to reach out to us with any forecast questions via the chat option on Clarity or our on-call number, **(317)-560-8122** press **1** for forecast questions.

# Houston Pilots Tropical Update

## European Model Next 10 Days - Tropical Tracks

ECMWF ATLANTIC EPS Cyclone Locations --> Next [10-days]  
INIT: 00Z01SEP2024 --> UNTIL 00Z11SEP2024

o-o ENSEMBLE MEAN  
o-o 1000 - 1010 hPa  
o-o 980 - 999 hPa  
o-o 960 - 979 hPa  
o-o 950 - 959 hPa  
o-o < 950 hPa



weathermodels.com

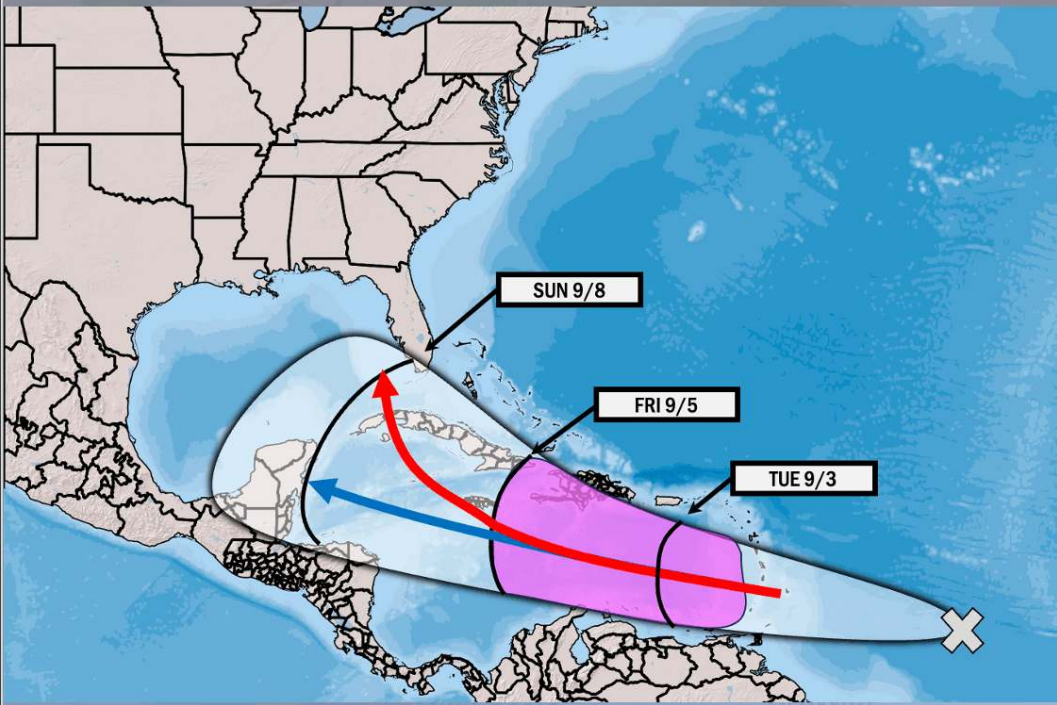
Monitoring a broad area of low pressure off the SE TX Coast as it works slowly northward. Further development remains unlikely.

Favoring a Tropical System to continue to work into the E Caribbean started the start the week and development continues to look likely towards the middle of the week. A close eye will need to continue to be on this system for possible impacts in the Gulf.

# Houston Pilots Tropical Update

 **Potential Francine?**

**TROPICAL INSIGHT** 3:45 PM ET Saturday August 31, 2024 Forecaster: Lowry



**TIMING:** August 31<sup>st</sup> – September 8<sup>th</sup>

- FORECAST NOTES:**
- ✓ Tracking general progression of tropical wave above!
  - ✓ Area in purple is area where formation chances are highest!
  - ✓ **Red Arrow:** Faster formation and quicker recurve solution
  - ✓ **Blue Arrow:** Slower formation and progression into S Caribbean



# Houston Pilots Visibility Chart (miles)



## Forecast Confidence



Visibility	Sun 2 pm	Sun 3 pm	Sun 4 pm	Sun 5 pm	Sun 6 pm	Sun 7 pm	Sun 8 pm	Sun 9 pm	Sun 10 pm	Sun 11 pm	Mon 12 am	Mon 1 am	Mon 2 am	Mon 3 am	Mon 4 am	Mon 5 am	Mon 6 am	Mon 7 am	Mon 8 am	Mon 9 am	Mon 10 am	Mon 11 am	Mon 12 pm	Mon 1 pm
Houston Pilots N - 610 Bridge	10.1	10.1	10.1	10.1	10.1	10.1	6.9	9	6.9	9	8	6.9	6.9	6.9	6.9	5.9	6.9	7.9	6.9	5.9	5.9	6.9	9	10.1
Houston Pilots M - Kinder 1	10.1	10.1	10.1	10.1	10.1	10.1	6.9	9	6.9	8	6.9	6.9	6.9	6.9	6.9	5.9	6.9	7.9	6.9	4.9	5.9	6.9	9	10.1
Houston Pilots L - Greens Bayou	10.1	10.1	10.1	10.1	10.1	10.1	9	9	9	9	8	6.9	6.9	6.9	6.9	5.9	6.9	6.9	6.9	4.9	5.9	6.9	9	10.1
Houston Pilots K - Shell Crude	10.1	10.1	10.1	10.1	10.1	10.1	9	9	10.1	8	6.9	6.9	6.9	6.9	6.9	5.9	6.9	6.9	6.9	4.9	4.9	6.9	9	9
Houston Pilots J - Lynchburg Ferries	10.1	10.1	10.1	10.1	10.1	10.1	10.1	9	10.1	9	8	6.9	6.9	6.9	6.9	5.9	6.9	7.9	6.9	4.9	5.9	6.9	9	10.1
Houston Pilots I - Exxon 3	10.1	10.1	10.1	10.1	10.1	10.1	9	9	10.1	6.9	6.9	6.9	6.9	6.9	6.9	5.9	6.9	6.9	6.9	4.9	4.9	6.9	9	9
Houston Pilots H - Morgans Point	10.1	10.1	10.1	10.1	10.1	10.1	9	6.9	10.1	8	8	6.9	6.9	6.9	6.9	5.9	6.9	6.9	6.9	4.9	5.9	6.9	8	9
Houston Pilots G - 75/76	10.1	10.1	10.1	10.1	6.9	10.1	10.1	6.9	10.1	10.1	8	8	6.9	6.9	6.9	6.9	6.9	7.9	8	4.9	6.9	7.9	9	6
Houston Pilots F - 63/64	10.1	10.1	10.1	6.9	6.9	8	10.1	6.9	10.1	10.1	8	8	6.9	6.9	6.9	6.9	6.9	9	9	5.9	6.9	7.9	8	7
Houston Pilots E - 51/52	10.1	6.9	6.9	6.9	9	8	10.1	10.1	10.1	10.1	9	9	8	8	8	6.9	9	10.1	10.1	6.9	6.9	9	8	8
Houston Pilots D - 37/38	9	6.9	5.9	6.9	9	8	10.1	10.1	10.1	10.1	10.1	9	8	8	9	8	10.1	10.1	10.1	6.9	7.9	10.1	9	9
Houston Pilots C - 25/26	9	6.9	5.9	10.1	10.1	10.1	10.1	10.1	10.1	10.1	10.1	10.1	8	8	9	10.1	10.1	10.1	10.1	6.9	7.9	10.1	9	9
Houston Pilots B - 11/12	10.1	6.9	6.9	10.1	10.1	10.1	10.1	10.1	10.1	10.1	10.1	10.1	8	8	10.1	10.1	10.1	10.1	10.1	8	10.1	10.1	12	12
Houston Pilots A - 1 & 2 Bravo	10.1	10.1	10.1	10.1	10.1	10.1	10.1	10.1	10.1	10.1	10.1	10.1	10.1	10.1	10.1	10.1	10.1	10.1	10.1	8	10.1	10.1	12	12

**NOTE: This is automated data that may/may not agree with the official BAM thinking that's found on the daily slides or special visibility report slides. This data should be used as a guide only**

# Houston Pilots Wind Chart



**Forecast Confidence**

Above Normal  Below Normal

Sustained wind 10 Knots

Gusts 15 Knots

Wind from the SE

**Example**

10

15

↖

Wind	Sun 2 pm	Sun 3 pm	Sun 4 pm	Sun 5 pm	Sun 6 pm	Sun 7 pm	Sun 8 pm	Sun 9 pm	Sun 10 pm	Sun 11 pm	Mon 12 am	Mon 1 am	Mon 2 am	Mon 3 am	Mon 4 am	Mon 5 am	Mon 6 am	Mon 7 am	Mon 8 am	Mon 9 am	Mon 10 am	Mon 11 am	Mon 12 pm	Mon 1 pm
Houston Pilots N - 610 Bridge	8 18 ←	9 18 ←	9 17 ←	8 17 ←	8 17 ←	8 17 ←	8 15 ←	7 15 ←	7 14 ←	7 14 ←	7 14 ←	7 14 ←	7 15 ←	7 15 ←	8 16 ←	8 16 ←	8 16 ←	8 17 ←	9 17 ←	9 18 ←	10 18 ←	10 20 ←	10 21 ←	10 21 ←
Houston Pilots M - Kinder 1	8 18 ←	9 18 ←	9 17 ←	8 17 ←	8 17 ←	8 16 ←	8 15 ←	7 15 ←	7 14 ←	7 14 ←	7 14 ←	7 14 ←	7 15 ←	7 15 ←	8 16 ←	8 16 ←	8 16 ←	8 17 ←	8 17 ←	9 17 ←	10 18 ←	10 20 ←	10 21 ←	10 21 ←
Houston Pilots L - Greens Bayou	8 17 ←	8 18 ←	9 17 ←	8 17 ←	8 17 ←	8 16 ←	7 15 ←	7 14 ←	6 14 ←	6 14 ←	7 14 ←	6 14 ←	7 15 ←	7 15 ←	7 16 ←	8 15 ←	8 16 ←	8 17 ←	8 17 ←	9 18 ←	9 18 ←	10 20 ←	10 20 ←	10 21 ←
Houston Pilots K - Shell Crude	8 17 ←	8 17 ←	9 17 ←	8 17 ←	8 17 ←	8 16 ←	7 15 ←	7 14 ←	7 14 ←	7 14 ←	7 14 ←	7 14 ←	7 15 ←	7 15 ←	8 16 ←	8 16 ←	8 16 ←	8 17 ←	8 18 ←	9 18 ←	10 20 ←	10 20 ←	10 20 ←	10 21 ←
Houston Pilots J - Lynchburg Ferries	8 17 ←	8 17 ←	8 17 ←	8 17 ←	8 17 ←	8 16 ←	7 15 ←	6 14 ←	6 14 ←	6 14 ←	6 14 ←	6 14 ←	6 14 ←	6 15 ←	7 16 ←	7 16 ←	8 16 ←	8 17 ←	8 17 ←	8 18 ←	9 18 ←	9 20 ←	10 20 ←	10 20 ←
Houston Pilots I - Exxon 3	12 18 ←	12 20 ←	12 18 ←	12 17 ←	12 17 ←	10 17 ←	10 16 ←	10 16 ←	12 16 ←	12 17 ←	13 17 ←	13 17 ←	13 17 ←	13 17 ←	13 18 ←	14 18 ←	14 20 ←	15 21 ←	15 21 ←	15 21 ←	14 21 ←	14 21 ←	14 21 ←	14 22 ←
Houston Pilots H - Morgans Point	12 18 ←	12 18 ←	12 18 ←	12 17 ←	12 17 ←	10 16 ←	10 16 ←	10 16 ←	12 16 ←	12 17 ←	13 17 ←	13 17 ←	13 17 ←	13 17 ←	13 18 ←	14 20 ←	14 20 ←	15 21 ←	15 21 ←	15 21 ←	14 21 ←	14 21 ←	14 21 ←	14 22 ←
Houston Pilots G - 75/76	12 20 ←	13 20 ←	13 18 ←	12 18 ←	12 18 ←	12 17 ←	12 17 ←	13 17 ←	13 17 ←	13 18 ←	14 20 ←	14 20 ←	14 20 ←	15 20 ←	15 21 ←	15 21 ←	15 22 ←	16 23 ←	16 23 ←	16 23 ←	15 23 ←	15 23 ←	15 23 ←	15 23 ←
Houston Pilots F - 63/64	12 20 ←	12 20 ←	12 18 ←	12 18 ←	12 18 ←	12 17 ←	12 17 ←	13 17 ←	13 17 ←	13 18 ←	14 20 ←	14 20 ←	14 20 ←	15 20 ←	15 21 ←	15 21 ←	15 22 ←	15 23 ←	15 23 ←	16 23 ←	16 24 ←	15 23 ←	15 24 ←	15 24 ←
Houston Pilots E - 51/52	12 18 ←	12 18 ←	12 18 ←	12 18 ←	12 18 ←	12 17 ←	12 17 ←	13 17 ←	13 17 ←	13 18 ←	13 20 ←	14 20 ←	14 20 ←	14 20 ←	15 20 ←	15 21 ←	15 22 ←	15 22 ←	15 22 ←	15 23 ←	16 24 ←	15 24 ←	15 24 ←	15 24 ←
Houston Pilots D - 37/38	12 18 ←	12 18 ←	12 17 ←	12 17 ←	12 17 ←	12 17 ←	12 17 ←	12 17 ←	13 17 ←	13 17 ←	13 18 ←	13 20 ←	14 20 ←	14 20 ←	14 20 ←	14 21 ←	15 21 ←	15 22 ←	15 22 ←	15 22 ←	15 23 ←	15 24 ←	15 24 ←	15 24 ←
Houston Pilots C - 25/26	10 17 ←	10 18 ←	10 17 ←	10 17 ←	10 17 ←	10 17 ←	10 17 ←	12 17 ←	12 17 ←	13 17 ←	13 18 ←	13 18 ←	13 18 ←	13 18 ←	13 18 ←	13 20 ←	13 20 ←	14 21 ←	14 21 ←	15 22 ←	15 23 ←	15 23 ←	15 24 ←	15 24 ←
Houston Pilots B - 11/12	10 17 ←	10 18 ←	10 17 ←	10 17 ←	10 17 ←	10 17 ←	10 17 ←	10 17 ←	10 17 ←	10 17 ←	10 18 ←	10 18 ←	10 18 ←	10 18 ←	10 17 ←	10 18 ←	12 18 ←	12 20 ←	13 20 ←	13 21 ←	14 21 ←	14 22 ←	14 23 ←	15 23 ←
Houston Pilots A - 1 & 2 Bravo	12 18 ←	12 18 ←	12 17 ←	12 17 ←	12 17 ←	12 17 ←	12 17 ←	12 17 ←	13 17 ←	13 18 ←	13 20 ←	13 20 ←	13 18 ←	13 18 ←	13 20 ←	14 20 ←	14 21 ←	15 21 ←	15 22 ←	15 22 ←	16 24 ←	16 24 ←	17 25 ←	17 25 ←

**NOTE: This is automated data that may/may not agree with the official BAM thinking that's found on the daily slides. This data should be used as a guide only.**



# Houston Pilots: SUN. 9/1/2024



## Forecast Discussion

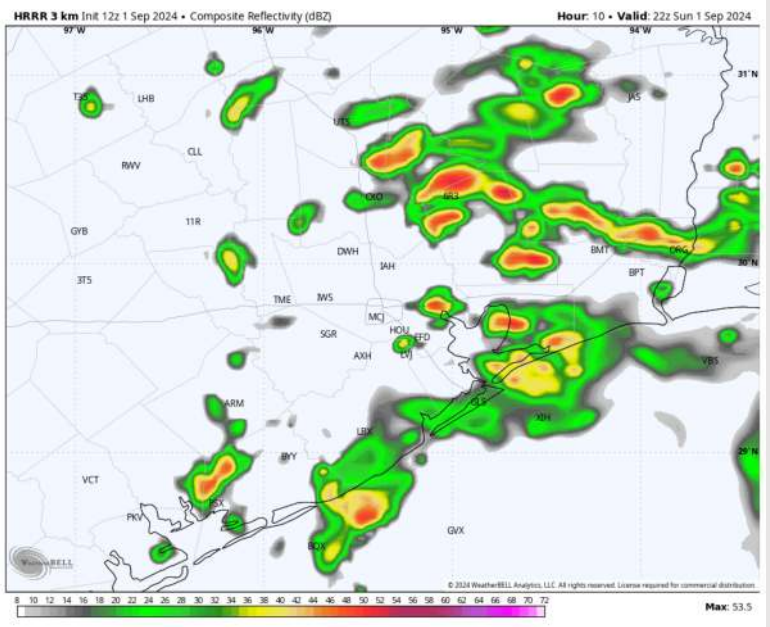
**Precip:** Scattered (40-50%) showers / storm chances continue for all Stations throughout the rest of the day.

**Wind:** Winds will be generally out of the E/NE throughout the remainder of the day. **N of Morgan's Point:** Winds at 5 – 10 kts throughout the rest of the day. **S of Morgan's Point:** Winds will be at 12-18 kts the rest of the day. **Non-thunderstorm wind gusts of 20-25 kts can be possible!**

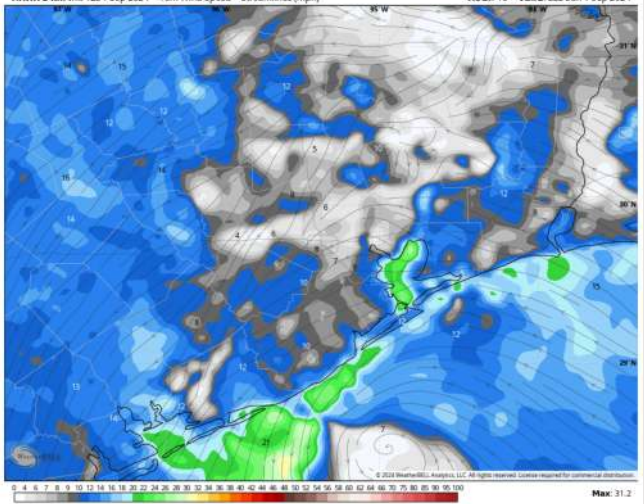
**Low Temps:** **N of Morgan's Point:** Mid 70s F. **S of Morgan's Point:** Upper 70s F.

**Visibility:** Not anticipating any fog concerns today, however, reduced visibilities will be possible in heavy downpours.

## Precip Image: 5 PM CT

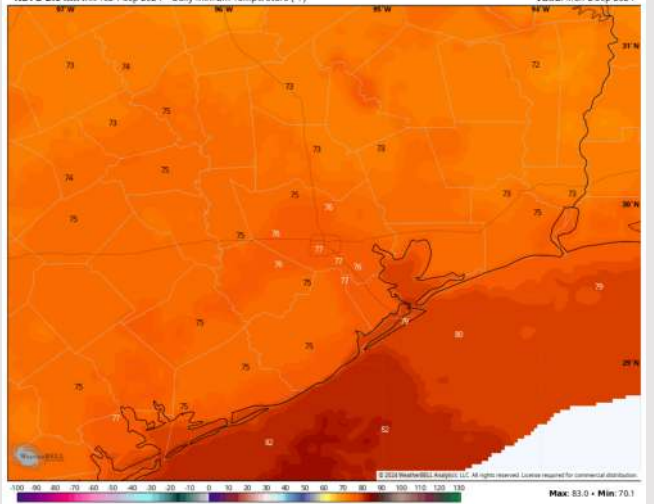


HRRR 3 km Init 12z 1 Sep 2024 • 10m Wind Speed + Streamlines (mph) Hour: 10 • Valid: 22z Sun 1 Sep 2024



Wind Speed  
5 PM CT

NDFD 2.5 km Init 16z 1 Sep 2024 • Daily Min. 2m Temperature (°F) Valid: Mon 2 Sep 2024



Low Temps  
MON AM

# Houston Pilots: MON. 9/2/2024



## Forecast Discussion

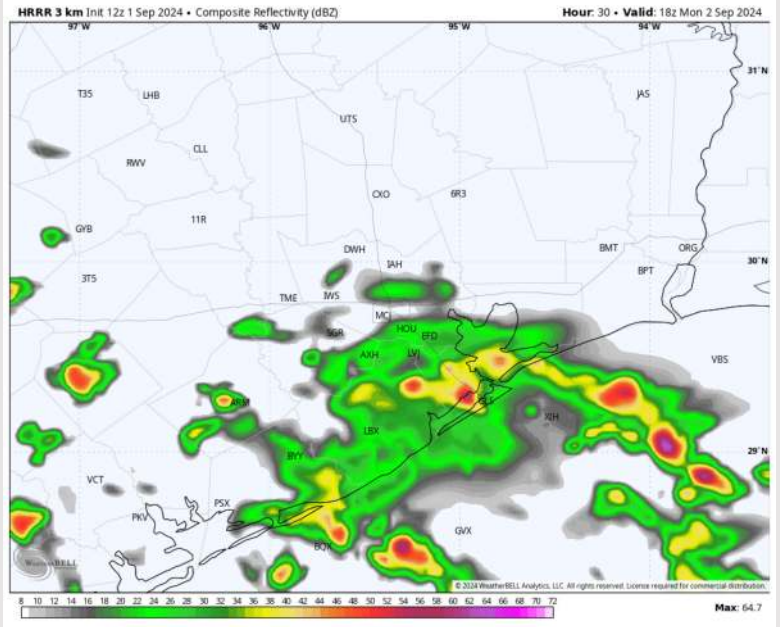
**Precip:** Scattered to widespread (60-70%) moderate/heavy rainfall will be possible through 4 PM, becoming more isolated in nature after then. Chances remain possible through the overnight, however, most rain/storms are expected to stay north of stations.

**Wind:** Winds will out of the SE/E throughout the day Monday. **N of Morgan's Point:** Winds will be at 6 – 11 kts throughout the day. **S of Morgan's Point:** Winds will be 8 – 13 kts throughout the day on Monday. **Gusts of up to 20 kts possible through 6 PM MON.**

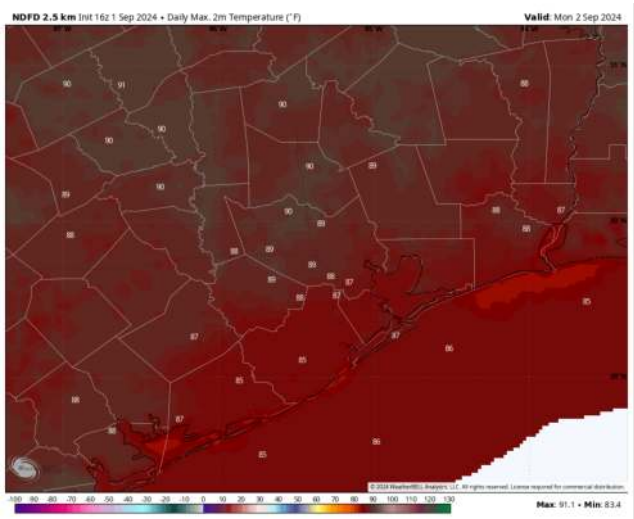
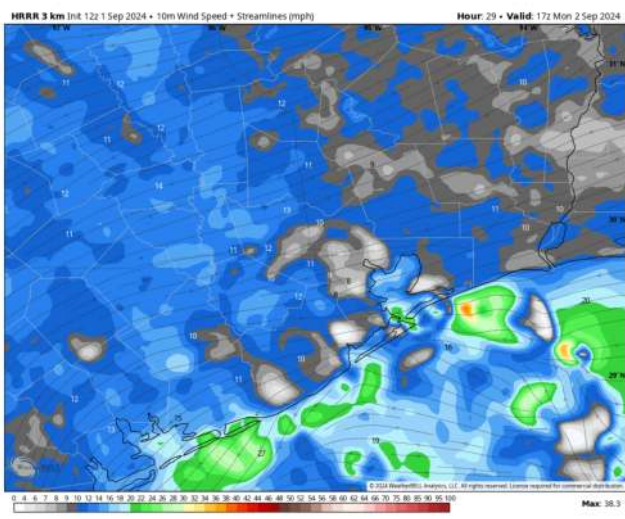
**High Temps:** **N of Morgan's Point:** Upper 80s F. **S of Morgan's Point:** Mid to upper 80s F.

**Visibility:** Not favoring any fog concerns Monday, however, heavy downpours will reduce visibilities.

## Precip Image: 1 PM CT



Wind Speed:  
12 PM CT



High Temps  
Monday



## Forecast Discussion

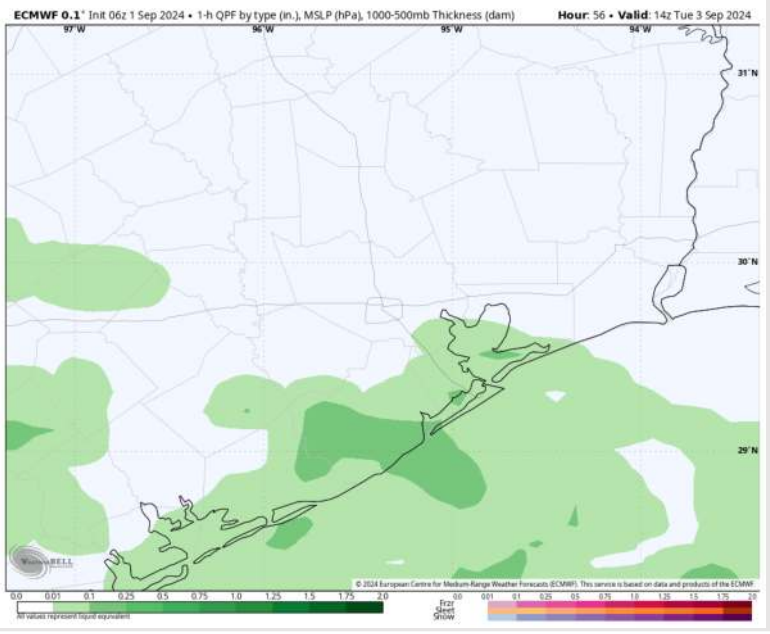
**Precip:** Scattered to widespread (50% - 60%) moderate to heavy showers in play for all stations throughout the day Tuesday.

**Wind:** Winds will be out of the E/SE throughout Tuesday. **N of Morgan's Point:** Winds will be sustained 4 - 9 kts throughout the day. **S of Morgan's Point:** Winds will be sustained at 9 - 14 kts, with wind gusts of 20-25 kts throughout the day being possible.

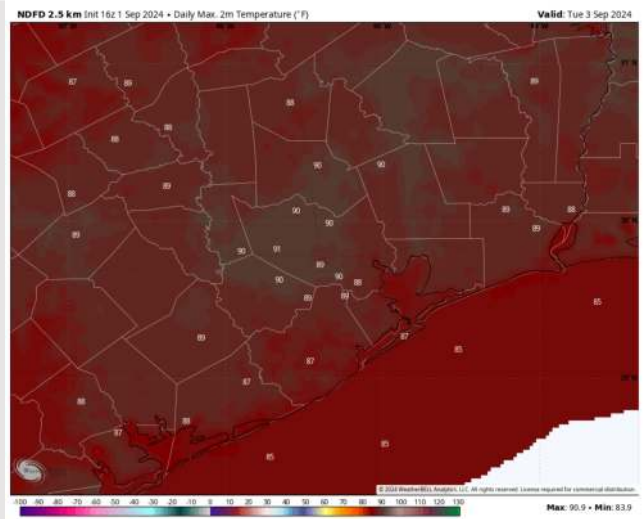
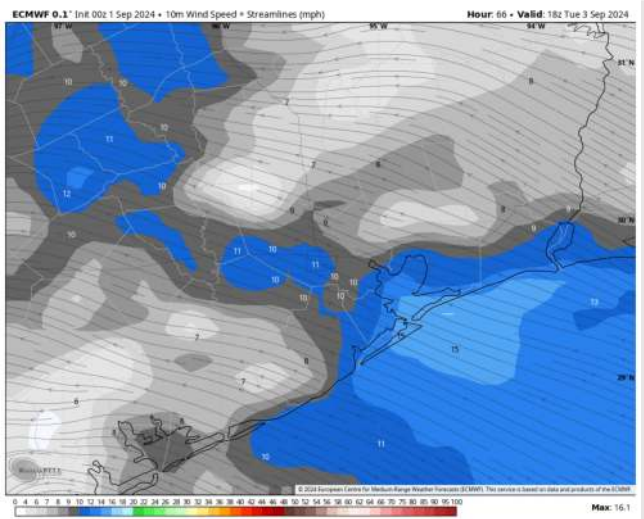
**High Temps:** **N of Morgan's Point:** Upper 80s F. **S of Morgan's Point:** Mid 80s F.

**Visibility:** Not anticipating any fog concerns for Tuesday, however, visibilities can be reduced in heavy downpours.

## Precip Image: 9 AM CT



Wind Speed:  
1 PM CT



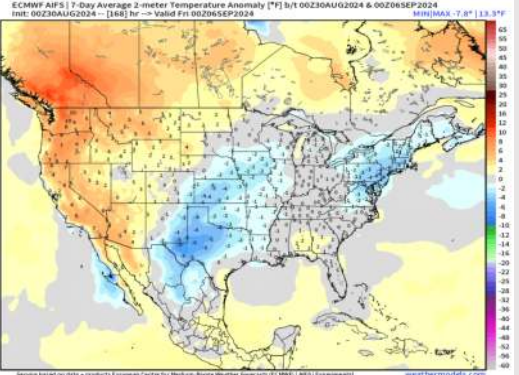
High Temps  
Tuesday



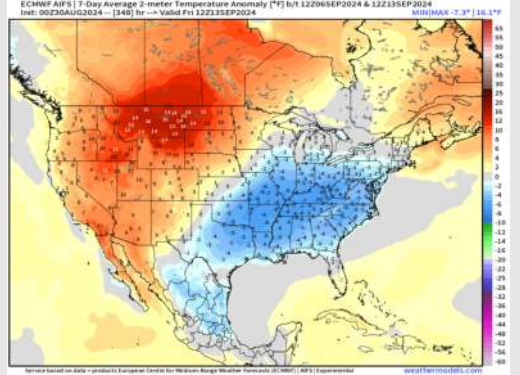
# Houston Pilots: 9/1/24



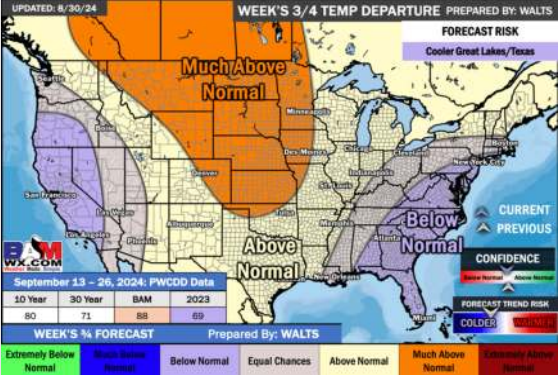
**Next 7 Day Temperature Departure**



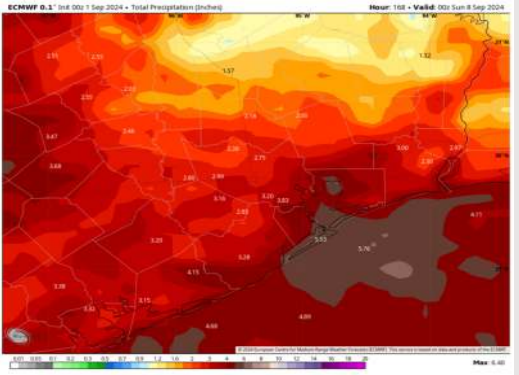
**8-14 Day Temperature Departure**



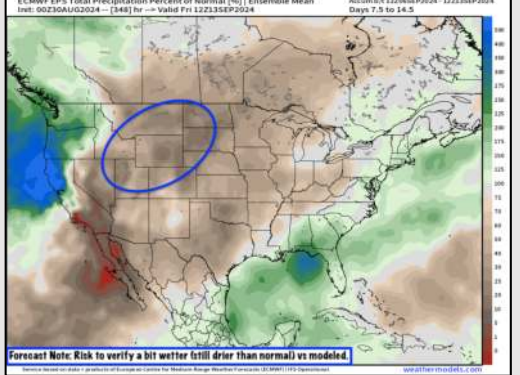
**15-30 Day Temperature Departure**



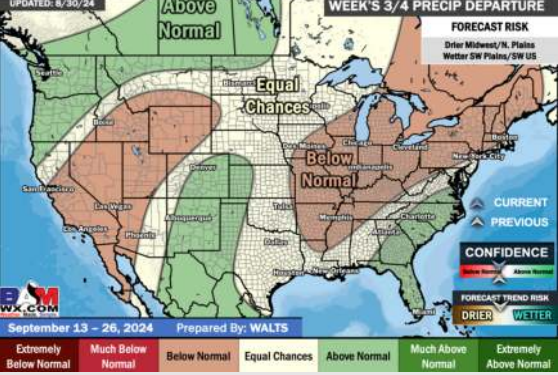
**Next 7 Day Total Precipitation**



**8-14 Day % of Average Precip.**



**15-30 Day % of Average Precip.**



- Temps are expected to be seasonable for the week 1 timeframe. Scattered to widespread rain chances are expected daily through the next week.
- Below normal temperatures are favored into week 2 with seasonable average rain chances. Tropical activity threats for Week 2 and beyond will continue to be monitored
- Above normal temperatures and seasonable precipitation chances are expected for the weeks 3/4 timeframe.