

Houston Pilots Forecast Package



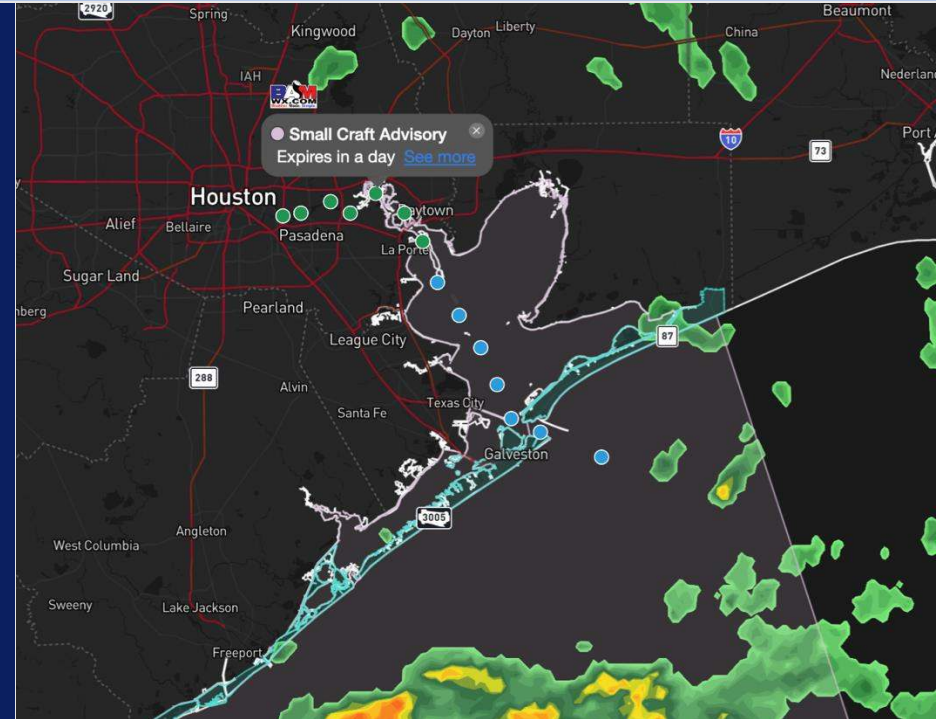
Updated: 10:30 PM CT

Friday, September 6, 2024

Forecaster: Xander Lowry

Weather Headlines

- **Due to the increase of winds with the tropical system, Yankee port conditions have been met.**
- **Monitoring an area of low-pressure of the SW coast of Houston that has slight potential for development into a tropical depression.**
- **Watching for increasing wave heights of 4+ feet this weekend. See wave height slide for more information.**
- **[9-6-24 Houston Pilots Video Update](#)**



Current Radar: 10:25 PM CT



As always, please do not hesitate to reach out to us with any forecast questions via the chat option on Clarity or our on-call number, **(317)-560-8122** press 1 for forecast questions.

Houston Pilots Port Trigger Update

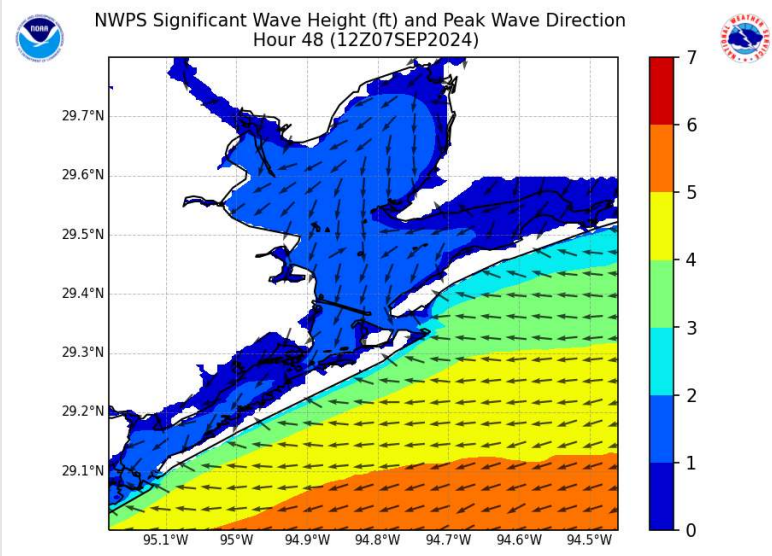


Port Condition	34 KTS+ Sustained Wind Trigger Reached at:	6 Foot Wave Trigger Reached at:	Time Remaining/Trigger Ends At:
Victor	---	---	N/A
Whiskey	---	---	N/A
X-Ray	---	---	N/A
Yankee	Current	N/A	5 AM FRI
Zulu	5AM FRI	N/A	7 PM SAT

Port Condition	Trigger Definition	Trigger Reached?
Victor	Hurricane entering/developing in Gulf of Mexico that's a threat to the area	N/A
Whiskey	72 hours prior to predicted sustained winds of 34+ KTS	N/A
X-Ray	48 hours prior to predicted sustained winds of 34+ KTS or 6' wave height	N/A
Yankee	24 hours prior to predicted sustained winds of 34+ KTS or 6' wave height	YES
Zulu	12 hours prior to predicted sustained winds of 34+ KTS or 6' wave height	NO

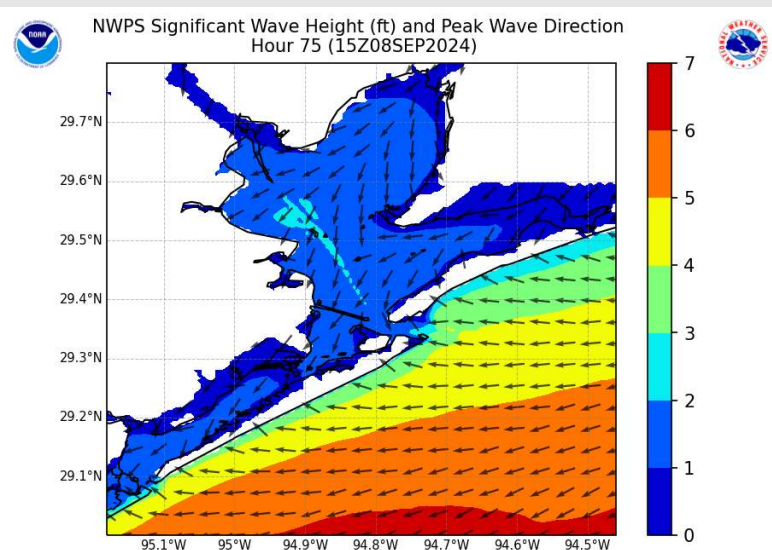
NOTES: 34+ KT wind threat is primarily for the boarding station with a low-end risk for stations 11/12 throughout the listed timeframe.

Wave Height Forecast Update



7 AM CT SAT

We're monitoring the risk of increasing wave heights with the tropical system pushing into the Gulf this weekend, though there is lower confidence.

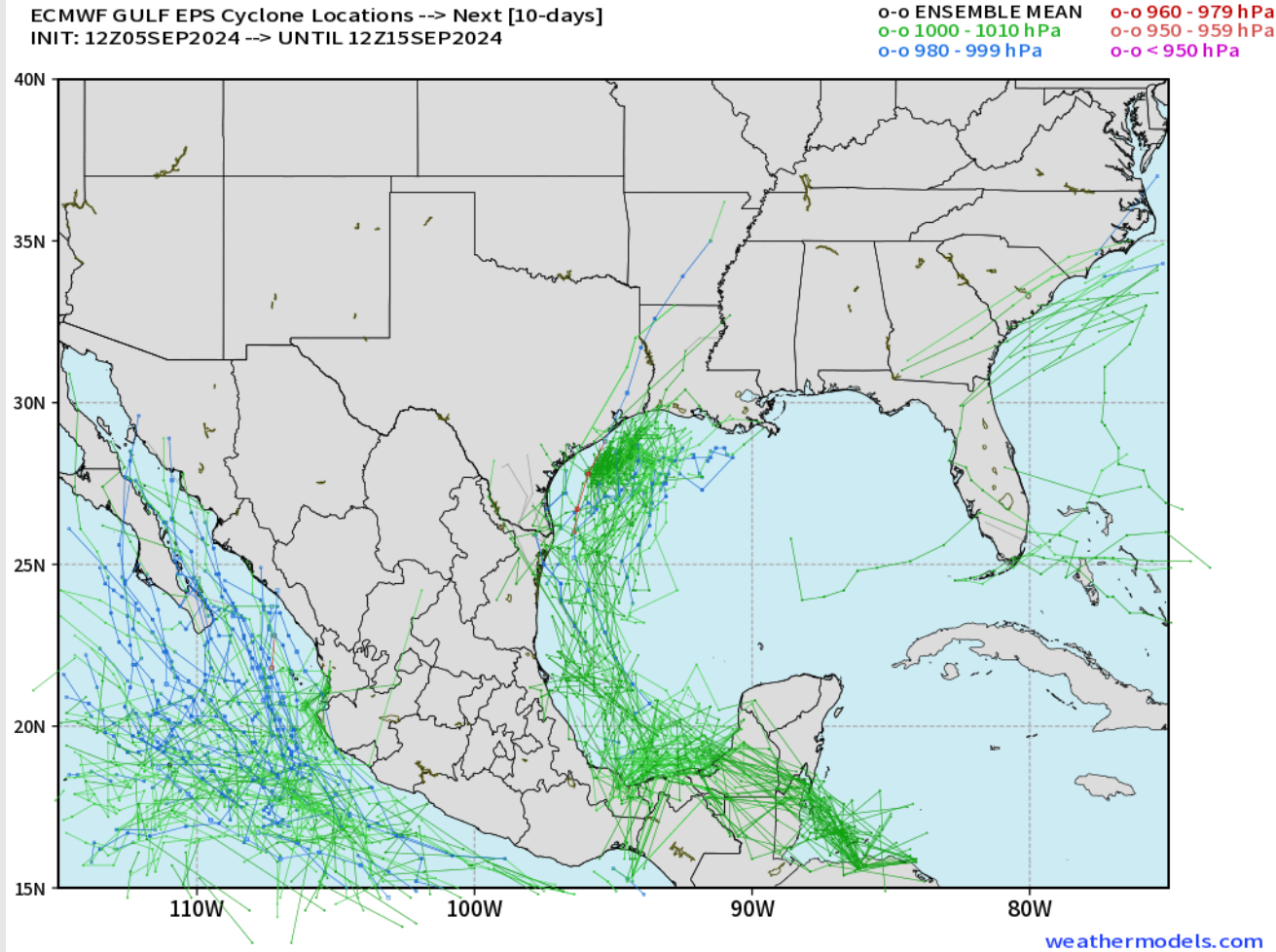


10 AM CT SUN

Timeframe to watch for peak wave heights of 4+ feet will be 7 PM Saturday – 1 AM Monday.

Houston Pilots Tropical Update

European Model Next 10 Days - Tropical Tracks



An area of low-pressure off the SW coast of Houston will continue to try and organize into the week.

Brief strengthening into a tropical depression cannot be ruled out but further development into a tropical storm or hurricane is not favored at this time.

Regardless heavy rainfall, gusty winds, and rough seas will be possible into the weekend.

Houston Pilots Visibility Chart (miles)



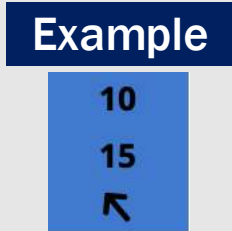
Forecast Confidence



Visibility	Thu 11 pm	Fri 12 am	Fri 1 am	Fri 2 am	Fri 3 am	Fri 4 am	Fri 5 am	Fri 6 am	Fri 7 am	Fri 8 am	Fri 9 am	Fri 10 am	Fri 11 am	Fri 12 pm	Fri 1 pm	Fri 2 pm	Fri 3 pm	Fri 4 pm	Fri 5 pm	Fri 6 pm	Fri 7 pm	Fri 8 pm	Fri 9 pm	Fri 10 pm
Houston Pilots N - 610 Bridge	9	9	10.1	10.1	10.1	10.1	10.1	10.1	10.1	10.1	5.9	3.9	4.9	5.9	7.9	10.1	10.1	10.1	9	9	10.1	10.1	10.1	10.1
Houston Pilots M - Kinder 1	9	9	10.1	10.1	10.1	10.1	10.1	10.1	10.1	10.1	5.9	3.9	3.9	5.9	7.9	10.1	10.1	10.1	9	9	10.1	10.1	10.1	10.1
Houston Pilots L - Greens Bayou	9	9	10.1	10.1	10.1	10.1	10.1	10.1	10.1	10.1	5.9	3.9	3.9	5.9	7.9	10.1	10.1	10.1	9	9	10.1	10.1	10.1	10.1
Houston Pilots K - Shell Crude	9	10.1	10.1	10.1	10.1	10.1	10.1	10.1	10.1	10.1	5.9	3.9	3.9	5.9	7.9	10.1	10.1	10.1	10.1	10.1	10.1	10.1	10.1	10.1
Houston Pilots J - Lynchburg Ferries	9	10.1	10.1	10.1	10.1	10.1	10.1	10.1	10.1	10.1	5.9	4.9	5.9	6.9	9	10.1	10.1	10.1	10.1	10.1	10.1	10.1	10.1	10.1
Houston Pilots I - Exxon 3	9	10.1	10.1	10.1	10.1	10.1	10.1	10.1	10.1	10.1	5.9	4.9	5.9	6.9	9	10.1	10.1	10.1	10.1	10.1	10.1	10.1	10.1	10.1
Houston Pilots H - Morgans Point	10.1	10.1	10.1	10.1	10.1	10.1	10.1	10.1	10.1	10.1	6.9	4.9	5.9	6.9	9	10.1	10.1	10.1	10.1	10.1	10.1	10.1	10.1	10.1
Houston Pilots G - 75/76	9	9	10.1	7.9	10.1	10.1	10.1	10.1	10.1	10.1	6.9	4.9	5.9	6.9	7.9	10.1	10.1	9	7.9	9	9	10.1	9	9
Houston Pilots F - 63/64	9	9	10.1	7.9	10.1	10.1	10.1	10.1	10.1	10.1	6.9	4.9	5.9	6.9	7.9	10.1	10.1	9	7.9	9	9	10.1	8	9
Houston Pilots E - 51/52	9	9	10.1	6.9	6.9	10.1	10.1	10.1	10.1	10.1	6.9	5.9	4.9	5.9	7.9	9	7.9	6.9	6.9	6.9	7.9	10.1	8	9
Houston Pilots D - 37/38	9	6.9	10.1	6.9	6.9	10.1	10.1	10.1	10.1	10.1	6.9	5.9	4.9	5.9	7.9	9	7.9	6.9	6.9	6.9	7.9	10.1	8	8
Houston Pilots C - 25/26	10.1	6.9	10.1	6.9	6.9	10.1	10.1	10.1	10.1	10.1	6.9	5.9	4.9	5.9	7.9	9	7.9	7.9	6.9	7.9	7.9	10.1	7	7
Houston Pilots B - 11/12	10.1	6.9	10.1	6.9	7.9	10.1	10.1	10.1	10.1	10.1	6.9	5.9	4.9	5.9	6.9	9	6.9	6.9	6.9	6.9	6.9	9	5	5
Houston Pilots A - 1 & 2 Bravo	9	7.9	9	7.9	7.9	10.1	10.1	10.1	10.1	10.1	6.9	4.9	4.9	4.9	5.9	6.9	5.9	5.9	4.9	5.9	5.9	6.9	4	5

NOTE: This is automated data that may/may not agree with the official BAM thinking that's found on the daily slides or special visibility report slides. This data should be used as a guide only

Houston Pilots Wind Chart



Wind	Thu 11 pm	Fri 12 am	Fri 1 am	Fri 2 am	Fri 3 am	Fri 4 am	Fri 5 am	Fri 6 am	Fri 7 am	Fri 8 am	Fri 9 am	Fri 10 am	Fri 11 am	Fri 12 pm	Fri 1 pm	Fri 2 pm	Fri 3 pm	Fri 4 pm	Fri 5 pm	Fri 6 pm	Fri 7 pm	Fri 8 pm	Fri 9 pm	Fri 10 pm
Houston Pilots N - 610 Bridge	10 22 ↙	12 23 ↙	10 22 ↙	10 21 ↙	10 22 ↙	12 22 ↙	12 22 ↙	12 22 ↙	13 23 ↙	13 23 ↙	13 24 ↙	13 24 ↙	13 25 ↙	13 26 ↙	13 26 ↙	13 29 ↙	14 29 ↙	14 29 ↙	14 28 ↙	14 26 ↙	13 26 ↙	13 24 ↙	12 25 ↙	12 24 ↙
Houston Pilots M - Kinder 1	10 22 ↙	12 23 ↙	10 22 ↙	10 21 ↙	10 22 ↙	10 22 ↙	12 22 ↙	12 23 ↙	13 23 ↙	13 24 ↙	13 24 ↙	13 25 ↙	13 26 ↙	13 26 ↙	13 29 ↙	13 29 ↙	14 29 ↙	14 29 ↙	14 28 ↙	14 26 ↙	13 26 ↙	13 25 ↙	12 25 ↙	12 25 ↙
Houston Pilots L - Greens Bayou	10 22 ↙	10 23 ↙	10 22 ↙	10 22 ↙	10 22 ↙	10 23 ↙	10 23 ↙	12 23 ↙	12 23 ↙	12 24 ↙	13 24 ↙	13 24 ↙	13 25 ↙	13 26 ↙	13 26 ↙	13 28 ↙	14 28 ↙	14 28 ↙	13 28 ↙	13 28 ↙	13 26 ↙	12 24 ↙	12 25 ↙	12 25 ↙
Houston Pilots K - Shell Crude	10 23 ↙	10 23 ↙	10 23 ↙	10 22 ↙	10 22 ↙	10 23 ↙	10 23 ↙	12 24 ↙	12 24 ↙	12 24 ↙	13 24 ↙	13 25 ↙	13 25 ↙	13 26 ↙	13 26 ↙	13 28 ↙	14 28 ↙	14 29 ↙	13 28 ↙	13 26 ↙	13 26 ↙	13 24 ↙	13 25 ↙	13 25 ↙
Houston Pilots J - Lynchburg Ferries	10 23 ↙	10 23 ↙	10 23 ↙	10 22 ↙	10 23 ↙	10 23 ↙	10 23 ↙	10 24 ↙	12 24 ↙	12 24 ↙	13 24 ↙	13 24 ↙	13 25 ↙	13 25 ↙	13 25 ↙	14 28 ↙	14 28 ↙	14 28 ↙	13 26 ↙	14 28 ↙	13 26 ↙	12 24 ↙	12 25 ↙	12 25 ↙
Houston Pilots I - Exxon 3	17 25 ↙	18 24 ↙	18 24 ↙	17 24 ↙	18 24 ↙	18 24 ↙	18 24 ↙	20 25 ↙	20 25 ↙	18 25 ↙	18 26 ↙	17 25 ↙	17 26 ↙	17 26 ↙	17 26 ↙	17 28 ↙	17 28 ↙	17 28 ↙	17 26 ↙	17 26 ↙	17 26 ↙	17 25 ↙	17 26 ↙	17 26 ↙
Houston Pilots H - Morgans Point	17 25 ↙	18 24 ↙	17 24 ↙	17 24 ↙	17 24 ↙	18 24 ↙	18 24 ↙	20 25 ↙	20 25 ↙	18 25 ↙	18 26 ↙	17 25 ↙	17 26 ↙	17 26 ↙	17 26 ↙	17 28 ↙	17 28 ↙	17 28 ↙	17 26 ↙	17 26 ↙	17 26 ↙	17 26 ↙	18 26 ↙	20 26 ↙
Houston Pilots G - 75/76	20 26 ↙	20 26 ↙	20 25 ↙	18 24 ↙	20 25 ↙	20 26 ↙	20 26 ↙	20 28 ↙	20 28 ↙	20 28 ↙	20 29 ↙	20 29 ↙	20 28 ↙	20 29 ↙	18 29 ↙	18 28 ↙	20 29 ↙	20 29 ↙	18 29 ↙	20 29 ↙	20 29 ↙	20 28 ↙	20 29 ↙	21 29 ↙
Houston Pilots F - 63/64	18 26 ↙	18 25 ↙	18 25 ↙	17 24 ↙	18 25 ↙	18 25 ↙	18 25 ↙	20 26 ↙	20 28 ↙	20 28 ↙	20 29 ↙	20 29 ↙	20 29 ↙	20 29 ↙	18 28 ↙	20 29 ↙	20 30 ↙	20 30 ↙	20 29 ↙	20 29 ↙	20 29 ↙	20 28 ↙	20 29 ↙	21 30 ↙
Houston Pilots E - 51/52	17 25 ↙	18 24 ↙	17 24 ↙	17 24 ↙	17 24 ↙	18 24 ↙	18 24 ↙	20 26 ↙	20 26 ↙	20 26 ↙	20 29 ↙	20 29 ↙	20 29 ↙	20 30 ↙	20 29 ↙	20 29 ↙	20 29 ↙	20 30 ↙	20 30 ↙	20 29 ↙	20 29 ↙	20 29 ↙	21 29 ↙	22 30 ↙
Houston Pilots D - 37/38	17 24 ↙	17 24 ↙	17 24 ↙	16 23 ↙	17 24 ↙	17 24 ↙	17 24 ↙	18 25 ↙	18 26 ↙	18 26 ↙	20 28 ↙	20 29 ↙	20 29 ↙	20 30 ↙	20 29 ↙	18 29 ↙	20 29 ↙	20 30 ↙	20 30 ↙	20 30 ↙	20 29 ↙	20 29 ↙	21 29 ↙	22 30 ↙
Houston Pilots C - 25/26	16 23 ↙	15 23 ↙	15 23 ↙	15 22 ↙	15 23 ↙	16 23 ↙	16 24 ↙	17 24 ↙	17 25 ↙	17 25 ↙	18 28 ↙	20 29 ↙	20 29 ↙	20 29 ↙	18 28 ↙	20 29 ↙	20 29 ↙	20 30 ↙	20 30 ↙	20 29 ↙	20 29 ↙	20 29 ↙	21 29 ↙	22 31 ↙
Houston Pilots B - 11/12	13 22 ↙	13 22 ↙	13 21 ↙	13 21 ↙	13 22 ↙	13 22 ↙	14 23 ↙	15 24 ↙	15 24 ↙	15 24 ↙	16 28 ↙	17 28 ↙	17 28 ↙	18 28 ↙	17 29 ↙	17 28 ↙	18 29 ↙	20 29 ↙	18 29 ↙	18 29 ↙	17 29 ↙	17 29 ↙	18 29 ↙	20 30 ↙
Houston Pilots A - 1 & 2 Bravo	15 22 ↙	15 22 ↙	15 22 ↙	15 21 ↙	15 22 ↙	15 22 ↙	15 23 ↙	17 24 ↙	17 24 ↙	17 25 ↙	18 28 ↙	20 29 ↙	20 29 ↙	20 30 ↙	20 30 ↙	20 31 ↙	21 31 ↙	21 32 ↙	21 32 ↙	21 32 ↙	21 32 ↙	22 32 ↙	22 32 ↙	23 33 ↙

NOTE: This is automated data that may/may not agree with the official BAM thinking that's found on the daily slides. This data should be used as a guide only.

Houston Pilots: FRI. 9/6/2024



Forecast Discussion

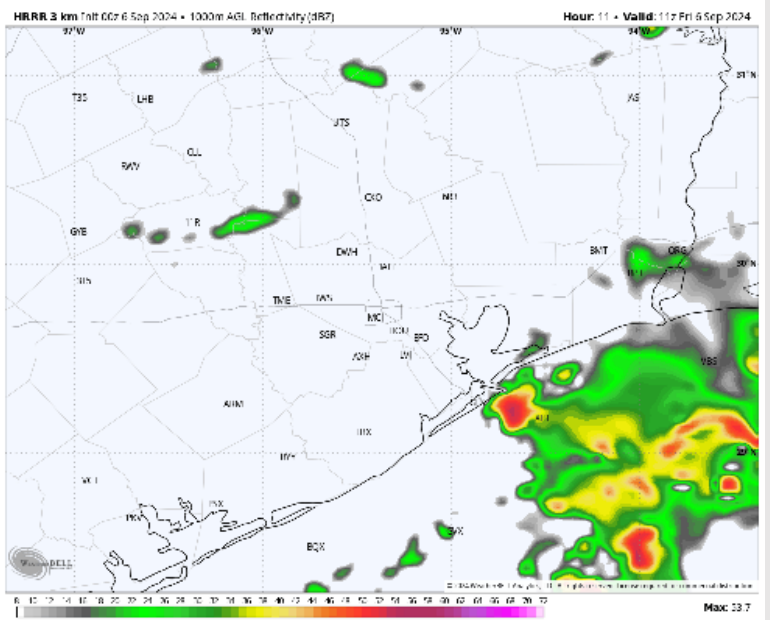
Precip: Isolated to scattered chances for showers and storms throughout the day Friday before clearing out by 7 PM. Boarding station will be at a more widespread shower/storm risk throughout the day before conditions clear out by 7PM. Dry conditions are then favored for the remainder of the night.

Wind: Winds will be out of the NE throughout the day. **N of Morgan's Point:** Winds will be sustained 7 – 13 kts throughout the day. **S of Morgan's Point:** Winds will be sustained at 12 – 17 kts through 9AM after 9AM favoring wind speeds to increase through 5PM. For stations N of 11/12 favoring wind speeds of 19 – 24 kts and for the boarding station favoring wind speeds of 33-38 kts. **Wind gusts S of station 11/12 of 40-50 kts will be possible!**

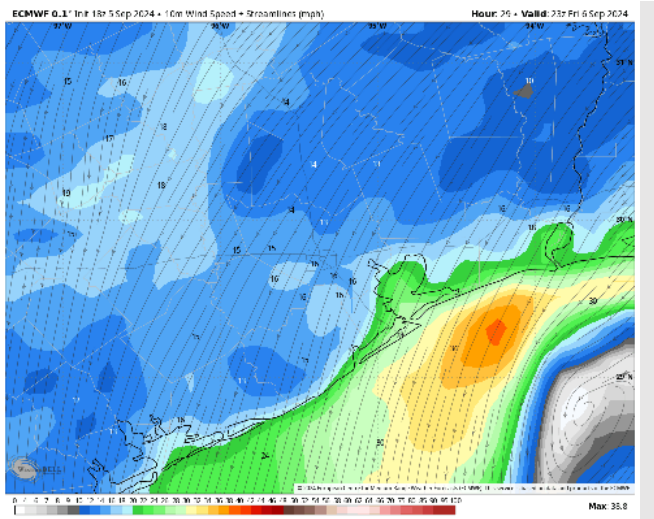
High Temps: **N of Morgan's Point:** Mid 80s F. **S of Morgan's Point:** Low to mid 80s F.

Visibility: Not anticipating any fog concerns for today, heavy rainfall will create pockets of reduced visibility.

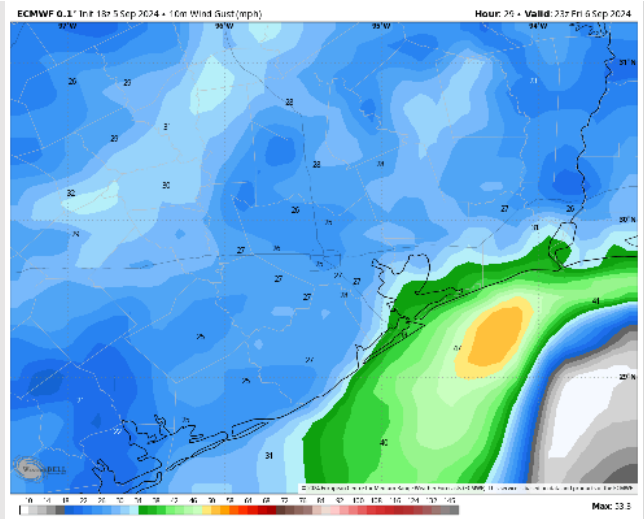
Precip Image: 6 AM CT



Wind Speed:
6 PM CT



Wind Gusts:
6 PM CT



Houston Pilots: SAT. 9/7/2024



Forecast Discussion

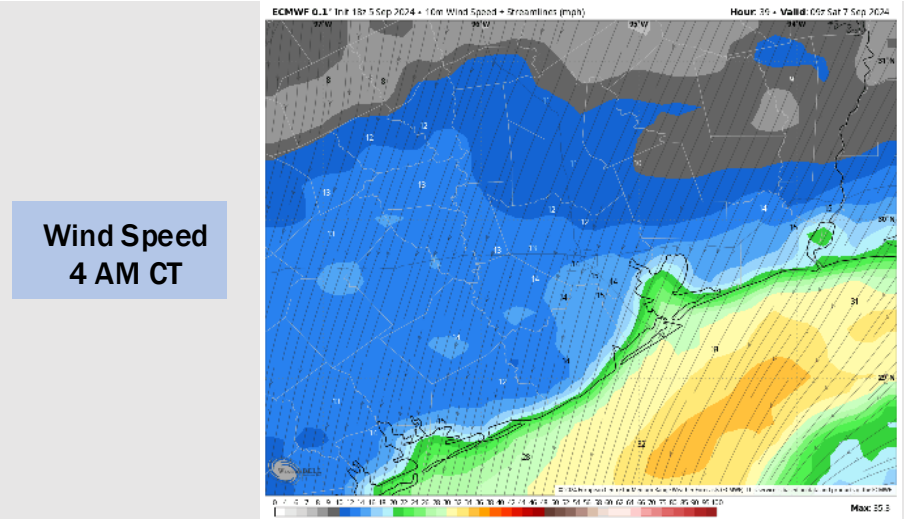
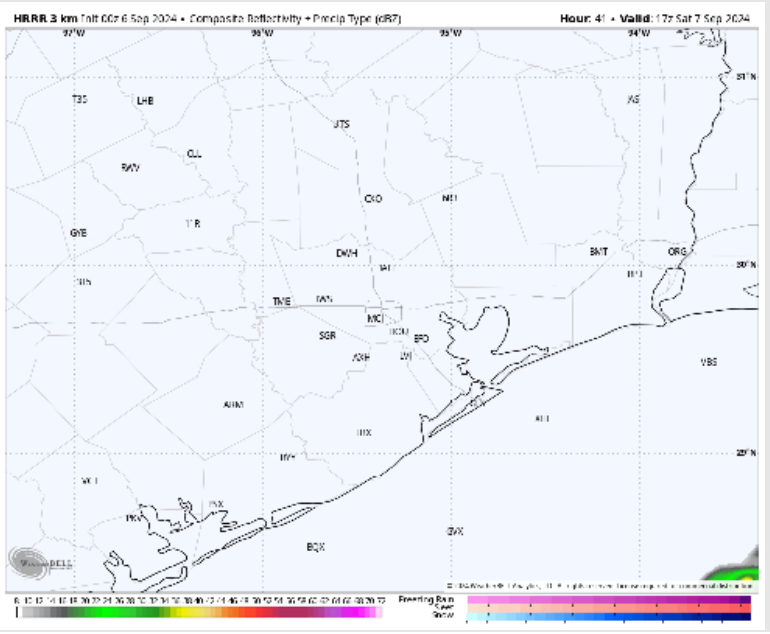
Precip: A few lingering, light showers through 3AM can't be ruled out, but at this time we are finally beginning to favor dry conditions for most of the day!

Wind: Winds will be generally out of the N/NE for the entire day. **N of Morgan's Point:** Winds at 10 – 15 kts for the entire day. **S of Morgan's Point:** Winds will be at 14 - 20 kts throughout the day N of stations 11/12 with 32 – 37 kts winds for the boarding station through 7PM. After 7PM favoring wind speeds near the boarding station to decrease to 22 – 27 kts for the rest of the day. **Wind gusts of 35 – 45 kts will be possible for the boarding station.**

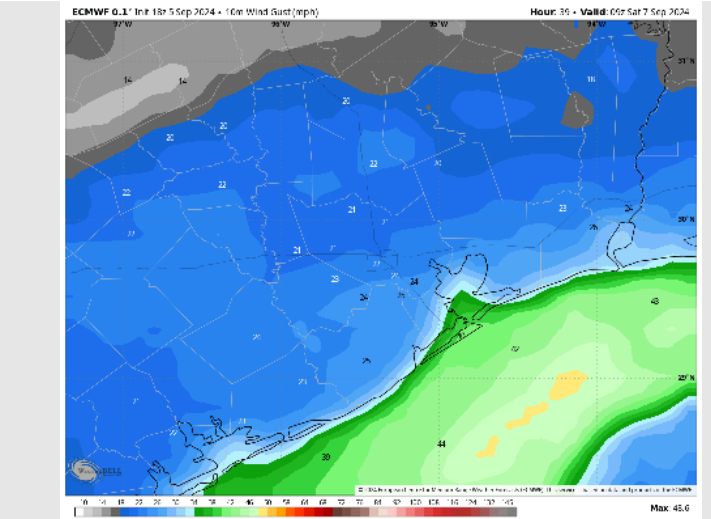
High Temps: **N of Morgan's Point:** Upper 80s F. **S of Morgan's Point:** Mid 80s F.

Visibility: Not favoring any fog concerns for Saturday.

Precip Image: 12 PM CT



Wind Speed
4 AM CT



Wind Gusts:
4 AM CT

Houston Pilots: SUN. 9/8/2024



Forecast Discussion

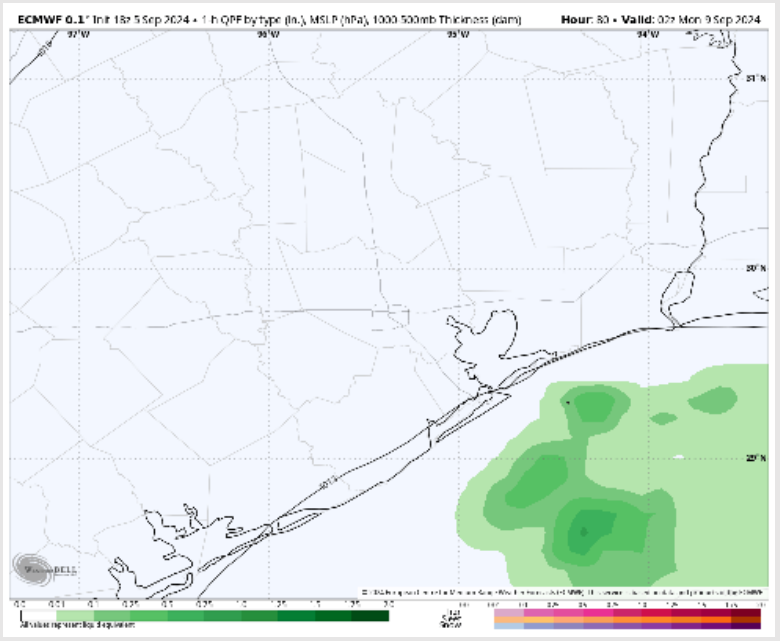
Precip: Favoring mostly dry conditions throughout Sunday however after 7PM showers/storms will be possible for the boarding station throughout the rest of the evening.

Wind: Winds will be out of the NE through the day on Sunday. **N of Morgan's Point:** Winds will be at 9 – 14 kts throughout the day. **S of Morgan's Point:** Winds will be at 16-21 kts with 20-25 kts winds for the boarding station. **Wind gusts of 30-35 kts will be possible for the boarding station throughout the day.**

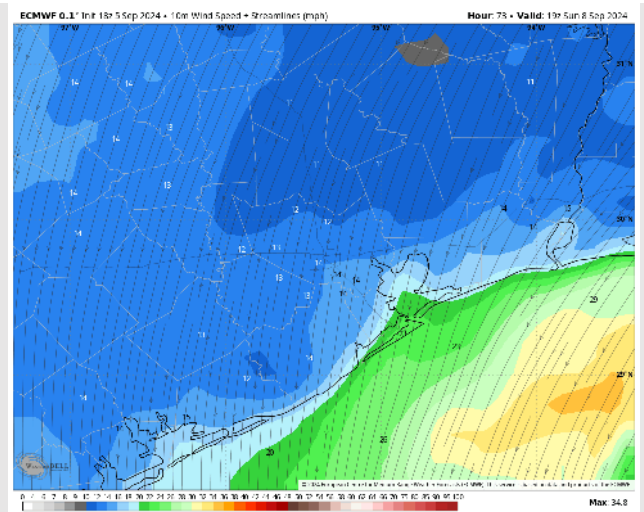
High Temps: **N of Morgan's Point:** Mid 80s F. **S of Morgan's Point:** Low 80s F.

Visibility: Not anticipating any concerns for Sunday.

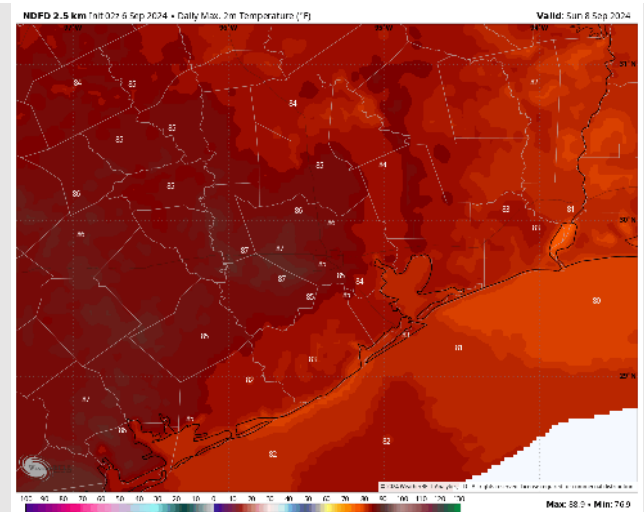
Precip Image: 9 PM CT



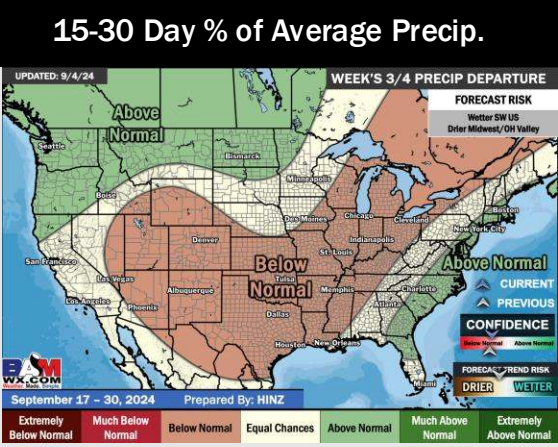
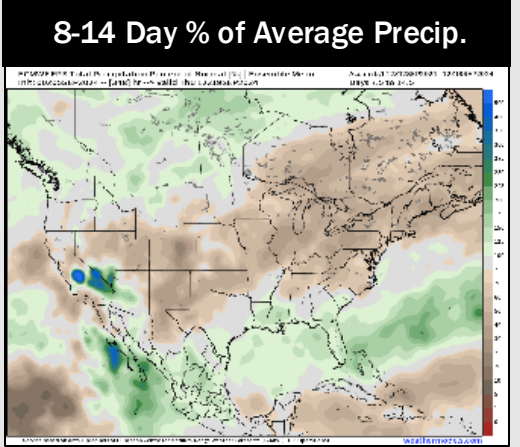
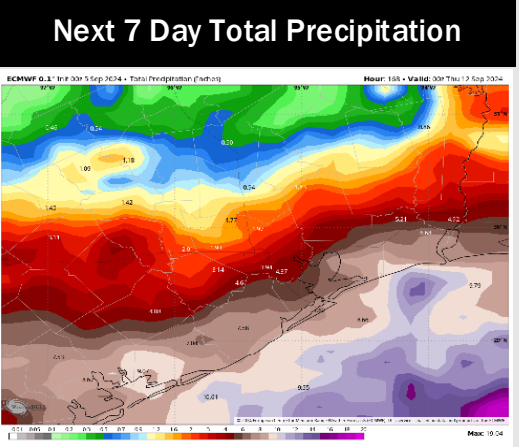
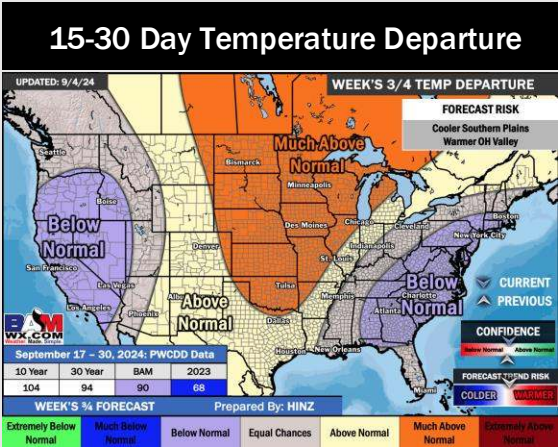
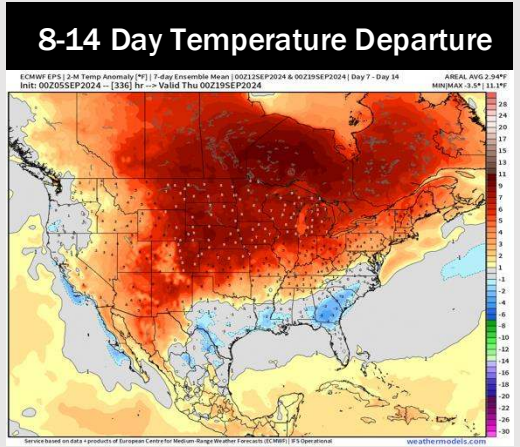
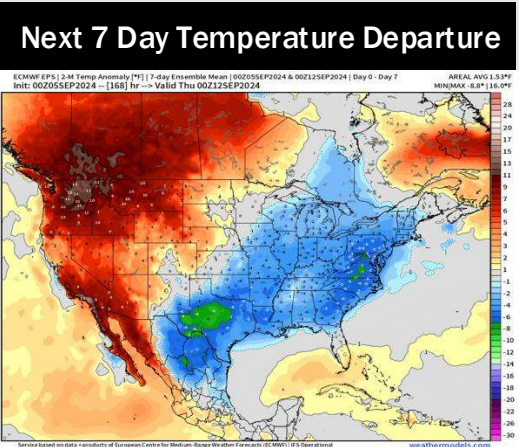
Wind Speed:
2 PM CT



High Temps
Sunday



Houston Pilots: 9/6/24



- Temps are expected to be below normal for the week 1 timeframe. Scattered to widespread rain chances are expected daily through the rest of this week with drier conditions into the weekend.
- Below normal temperatures are favored for week 2 with near to just below normal rain chances. Tropical activity threats for late Week 1 / early Week 2 and beyond will continue to be monitored
- Above normal temperatures and seasonable precipitation chances are expected for the weeks 3/4 timeframe.