

Houston Pilots Forecast Package



Updated: 10:30 PM CT

Wednesday, September 4, 2024

Forecaster: John Kemper

Weather Headlines

- Downpour/storm risks to continue through Friday. **A few stronger gusts of up to 30kts will be possible.**
- Monitoring a tropical wave working through the Caribbean. Tropical Storm / Hurricane development NOT favored at this time.
- Not favoring any fog risks over the next few days.



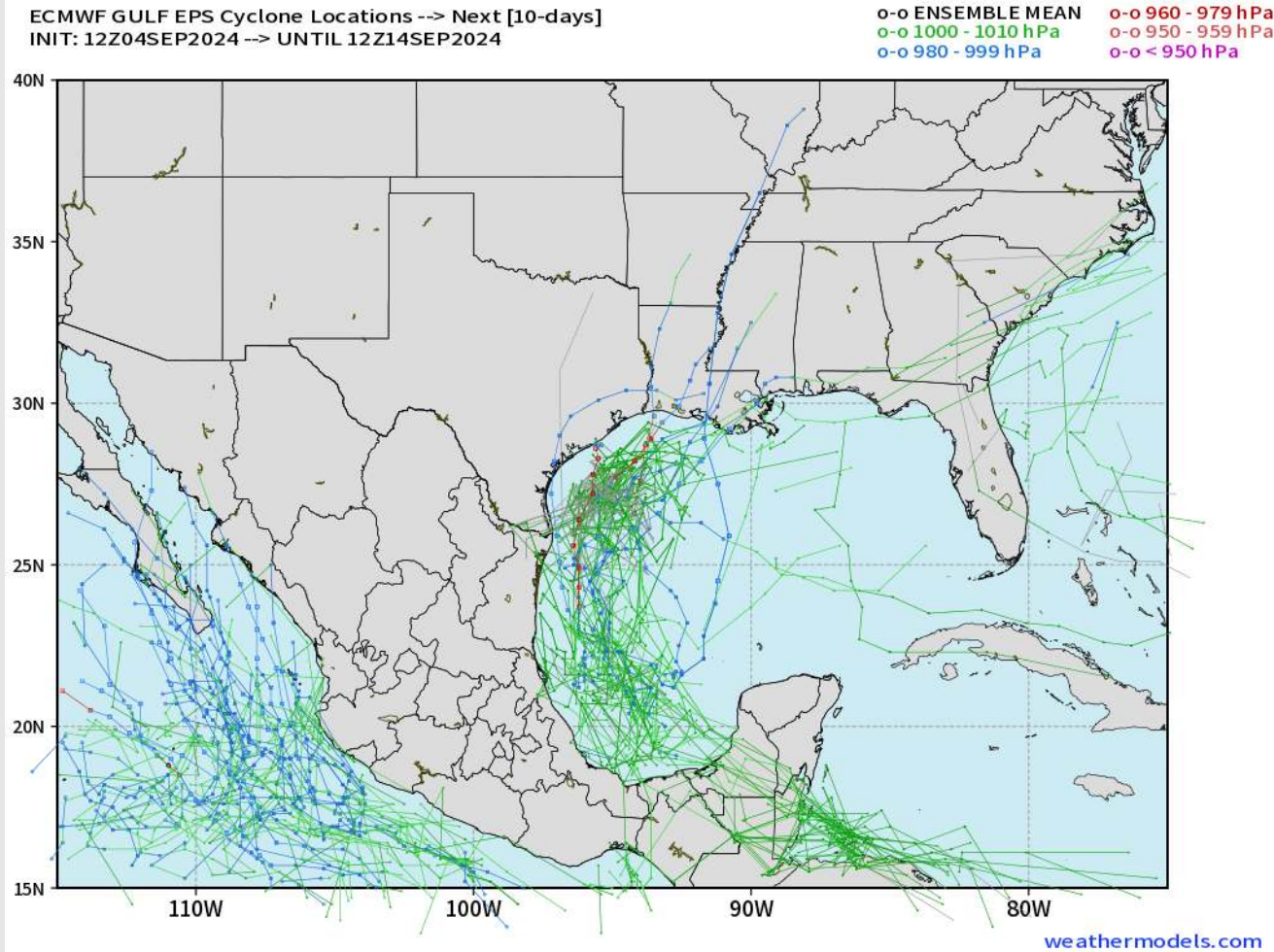
Current Radar: 10:15 PM CT



As always, please do not hesitate to reach out to us with any forecast questions via the chat option on Clarity or our on-call number, **(317)-560-8122** press 1 for forecast questions.

Houston Pilots Tropical Update

European Model Next 10 Days - Tropical Tracks



Favoring a Tropical System to continue to work through the E Caribbean. At this time, we are not favoring this system to develop into a tropical storm/hurricane.

Any development would likely not occur until mid next week, with the potential for additional scattered showers/storms and elevated gusts only.

Houston Pilots Visibility Chart (miles)



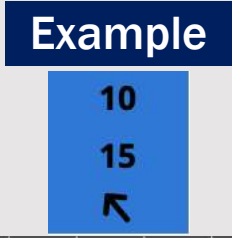
Forecast Confidence



Visibility	Wed 11 pm	Thu 12 am	Thu 1 am	Thu 2 am	Thu 3 am	Thu 4 am	Thu 5 am	Thu 6 am	Thu 7 am	Thu 8 am	Thu 9 am	Thu 10 am	Thu 11 am	Thu 12 pm	Thu 1 pm	Thu 2 pm	Thu 3 pm	Thu 4 pm	Thu 5 pm	Thu 6 pm	Thu 7 pm	Thu 8 pm	Thu 9 pm	Thu 10 pm
Houston Pilots N - 610 Bridge	10.1	10.1	10.1	10.1	10.1	10.1	10.1	10.1	10.1	10.1	6.9	3.9	3	3.9	4.9	6.9	6.9	6.9	6.9	6.9	6.9	7.9	9	10.1
Houston Pilots M - Kinder 1	10.1	10.1	10.1	10.1	10.1	10.1	10.1	10.1	10.1	10.1	6.9	3.9	3	3.9	4.9	4.9	6.9	6.9	6.9	6.9	6.9	7.9	9	10.1
Houston Pilots L - Greens Bayou	10.1	10.1	10.1	10.1	10.1	10.1	10.1	10.1	10.1	10.1	4.9	3.9	3	3.9	4.9	4.9	5.9	6.9	6.9	6.9	6.9	7.9	9	9
Houston Pilots K - Shell Crude	10.1	10.1	10.1	10.1	10.1	10.1	10.1	10.1	10.1	10.1	4.9	3.9	3	3.9	3.9	4.9	5.9	6.9	5.9	6.9	6.9	6.9	9	9
Houston Pilots J - Lynchburg Ferries	10.1	10.1	10.1	10.1	10.1	10.1	10.1	10.1	10.1	10.1	4.9	3.9	3	3.9	4.9	4.9	5.9	6.9	5.9	6.9	6.9	7.9	9	9
Houston Pilots I - Exxon 3	10.1	10.1	10.1	10.1	10.1	10.1	10.1	10.1	10.1	10.1	4.9	3.9	3	3.9	3.9	4.9	5.9	6.9	5.9	6.9	6.9	6.9	9	9
Houston Pilots H - Morgans Point	10.1	10.1	10.1	10.1	10.1	10.1	10.1	10.1	10.1	10.1	4.9	3.9	3	3.9	3.9	3.9	4.9	4.9	5.9	5.9	5.9	6.9	6.9	8
Houston Pilots G - 75/76	10.1	10.1	10.1	10.1	10.1	10.1	10.1	10.1	10.1	10.1	4.9	3.9	3	3.9	3.9	3.9	4.9	3.9	3.9	3.9	3.9	4.9	6.9	8
Houston Pilots F - 63/64	10.1	10.1	10.1	10.1	10.1	10.1	10.1	10.1	10.1	10.1	4.9	3.9	3	3.9	3.9	3.9	4.9	3.9	3.9	3.9	3.9	4.9	6.9	8
Houston Pilots E - 51/52	10.1	10.1	10.1	10.1	10.1	10.1	10.1	10.1	10.1	10.1	4.9	3.9	3.9	3	3.9	3.9	3.9	3.9	3.9	3.9	3.9	4.9	5.9	8
Houston Pilots D - 37/38	10.1	10.1	10.1	10.1	10.1	10.1	10.1	10.1	10.1	9	3.9	3.9	3.9	3	3.9	3.9	3.9	3.9	3.9	3.9	3.9	4.9	5.9	8
Houston Pilots C - 25/26	10.1	10.1	10.1	10.1	10.1	10.1	9	10.1	10.1	7.9	3.9	3.9	3.9	1.6	1.6	2.5	3.9	3	3	3.9	3.9	4.9	7	5
Houston Pilots B - 11/12	10.1	10.1	10.1	10.1	10.1	10.1	9	6.9	10.1	7.9	3.9	2.9	3	1.6	1.6	2	2.5	3	3	3	3.9	4.9	6	4
Houston Pilots A - 1 & 2 Bravo	9	9	10.1	10.1	6.9	6.9	7.9	7.9	10.1	7.9	4.9	2.9	1.6	1.6	1.6	2	2	2.5	3	3	3.9	4.9	5	2.5

NOTE: This is automated data that may/may not agree with the official BAM thinking that's found on the daily slides or special visibility report slides. This data should be used as a guide only

Houston Pilots Wind Chart



Wind	Wed 11 pm	Thu 12 am	Thu 1 am	Thu 2 am	Thu 3 am	Thu 4 am	Thu 5 am	Thu 6 am	Thu 7 am	Thu 8 am	Thu 9 am	Thu 10 am	Thu 11 am	Thu 12 pm	Thu 1 pm	Thu 2 pm	Thu 3 pm	Thu 4 pm	Thu 5 pm	Thu 6 pm	Thu 7 pm	Thu 8 pm	Thu 9 pm	Thu 10 pm
Houston Pilots N - 610 Bridge	9 18 ↙	9 18 ↙	9 18 ↙	9 18 ↙	9 18 ↙	9 18 ↙	9 18 ↙	10 18 ↙	10 18 ↙	10 18 ↙	10 20 ↙	10 20 ↙	10 20 ↙	10 21 ↙	10 21 ↙	10 22 ↙	10 22 ↙	10 22 ↙	10 21 ↙	10 21 ↙	10 21 ↙	9 18 ↙	9 18 ↙	9 18 ↙
Houston Pilots M - Kinder 1	9 18 ↙	9 18 ↙	9 18 ↙	9 18 ↙	9 18 ↙	9 18 ↙	9 18 ↙	9 18 ↙	10 18 ↙	10 18 ↙	10 20 ↙	10 20 ↙	10 20 ↙	10 21 ↙	10 21 ↙	10 22 ↙	10 22 ↙	10 22 ↙	10 21 ↙	10 21 ↙	10 21 ↙	9 18 ↙	9 18 ↙	9 18 ↙
Houston Pilots L - Greens Bayou	9 18 ↙	9 20 ↙	9 20 ↙	9 18 ↙	9 18 ↙	9 20 ↙	9 20 ↙	9 20 ↙	9 20 ↙	9 20 ↙	10 20 ↙	10 20 ↙	10 20 ↙	10 21 ↙	10 21 ↙	10 22 ↙	10 22 ↙	10 22 ↙	10 21 ↙	10 21 ↙	10 20 ↙	9 18 ↙	9 18 ↙	9 18 ↙
Houston Pilots K - Shell Crude	9 20 ↙	9 20 ↙	9 20 ↙	9 20 ↙	9 20 ↙	9 20 ↙	9 20 ↙	9 20 ↙	9 20 ↙	10 20 ↙	10 21 ↙	10 21 ↙	10 21 ↙	10 21 ↙	10 21 ↙	10 22 ↙	10 22 ↙	10 22 ↙	10 22 ↙	10 20 ↙	10 20 ↙	9 18 ↙	9 18 ↙	9 18 ↙
Houston Pilots J - Lynchburg Ferries	8 20 ↙	8 20 ↙	8 20 ↙	8 20 ↙	8 20 ↙	8 20 ↙	8 20 ↙	9 20 ↙	9 20 ↙	9 20 ↙	10 21 ↙	10 20 ↙	10 20 ↙	10 21 ↙	10 20 ↙	10 22 ↙	10 22 ↙	10 22 ↙	10 22 ↙	10 20 ↙	10 20 ↙	9 18 ↙	8 18 ↙	8 18 ↙
Houston Pilots I - Exxon 3	15 22 ↙	16 22 ↙	16 23 ↙	16 22 ↙	16 23 ↙	16 23 ↙	16 23 ↙	16 23 ↙	16 23 ↙	16 22 ↙	15 22 ↙	15 22 ↙	14 22 ↙	14 21 ↙	14 22 ↙	14 21 ↙	14 22 ↙	14 22 ↙	14 21 ↙	14 21 ↙	14 21 ↙	14 20 ↙	14 20 ↙	15 21 ↙
Houston Pilots H - Morgans Point	15 22 ↙	16 23 ↙	16 23 ↙	16 23 ↙	16 23 ↙	16 23 ↙	16 23 ↙	16 23 ↙	16 23 ↙	15 22 ↙	15 23 ↙	15 22 ↙	14 22 ↙	14 22 ↙	14 21 ↙	14 22 ↙	14 22 ↙	14 22 ↙	14 21 ↙	14 21 ↙	14 21 ↙	14 20 ↙	14 20 ↙	15 21 ↙
Houston Pilots G - 75/76	17 24 ↙	17 24 ↙	17 24 ↙	17 24 ↙	17 24 ↙	17 24 ↙	17 24 ↙	17 24 ↙	17 24 ↙	17 24 ↙	17 24 ↙	16 24 ↙	15 24 ↙	15 24 ↙	15 23 ↙	15 23 ↙	15 23 ↙	15 23 ↙	15 22 ↙	15 22 ↙	15 22 ↙	15 22 ↙	15 22 ↙	16 22 ↙
Houston Pilots F - 63/64	17 24 ↙	17 24 ↙	17 24 ↙	17 24 ↙	17 24 ↙	17 24 ↙	17 24 ↙	17 24 ↙	17 24 ↙	17 24 ↙	17 24 ↙	16 24 ↙	15 24 ↙	15 24 ↙	15 23 ↙	15 22 ↙	15 23 ↙	15 23 ↙	15 22 ↙	15 23 ↙	15 22 ↙	15 22 ↙	15 22 ↙	15 22 ↙
Houston Pilots E - 51/52	17 24 ↙	17 24 ↙	17 24 ↙	17 24 ↙	17 24 ↙	17 24 ↙	17 24 ↙	17 24 ↙	17 24 ↙	17 24 ↙	17 24 ↙	17 24 ↙	16 24 ↙	15 24 ↙	15 24 ↙	15 22 ↙	15 22 ↙	15 23 ↙	15 23 ↙	15 22 ↙	15 23 ↙	15 22 ↙	15 22 ↙	16 22 ↙
Houston Pilots D - 37/38	17 24 ↙	17 24 ↙	17 24 ↙	17 24 ↙	17 24 ↙	17 24 ↙	17 24 ↙	17 24 ↙	17 24 ↙	16 24 ↙	16 24 ↙	16 24 ↙	16 24 ↙	15 24 ↙	15 23 ↙	15 22 ↙	15 22 ↙	15 22 ↙	15 22 ↙	15 22 ↙	15 22 ↙	15 21 ↙	15 21 ↙	15 22 ↙
Houston Pilots C - 25/26	16 24 ↙	16 24 ↙	16 24 ↙	15 23 ↙	16 24 ↙	15 23 ↙	15 23 ↙	15 23 ↙	15 23 ↙	15 23 ↙	15 23 ↙	15 23 ↙	15 23 ↙	15 23 ↙	15 22 ↙	14 22 ↙	15 22 ↙	15 22 ↙	15 22 ↙	15 22 ↙	14 22 ↙	14 21 ↙	14 21 ↙	15 21 ↙
Houston Pilots B - 11/12	15 24 ↙	15 24 ↙	14 23 ↙	14 23 ↙	14 23 ↙	14 23 ↙	13 22 ↙	14 23 ↙	14 22 ↙	13 22 ↙	14 22 ↙	14 23 ↙	14 23 ↙	14 23 ↙	14 22 ↙	13 22 ↙	14 22 ↙	14 22 ↙	14 22 ↙	13 21 ↙	13 21 ↙	13 21 ↙	13 21 ↙	13 21 ↙
Houston Pilots A - 1 & 2 Bravo	17 25 ↙	17 25 ↙	17 24 ↙	17 24 ↙	17 24 ↙	16 24 ↙	16 24 ↙	16 24 ↙	16 24 ↙	16 23 ↙	15 23 ↙	16 23 ↙	15 23 ↙	15 23 ↙	15 23 ↙	15 22 ↙	15 22 ↙	15 22 ↙	15 22 ↙	15 22 ↙	15 22 ↙	15 22 ↙	15 21 ↙	15 21 ↙

NOTE: This is automated data that may/may not agree with the official BAM thinking that's found on the daily slides. This data should be used as a guide only.

Forecast Discussion

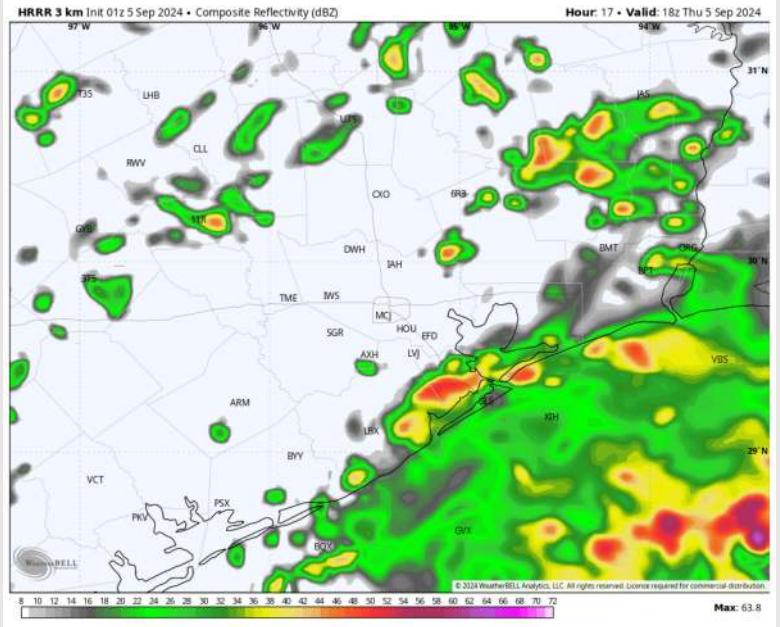
Precip: Scattered to widespread showers and storms can be expected across all stations throughout the entire day. Coverage will be the greatest and most frequent for stations S of Morgan's Point. **A few stronger gusts of up to 30kts will be possible from 7AM – 8PM.**

Wind: Sustained winds will be out of the NE through 8AM before veering out of the ENE – E for the rest of the day. **N of Morgan's Point:** Winds will be at 5 – 10 kts for the entire day. **S of Morgan's Point:** Winds will be at 16 -22 kts with occasional non-thunderstorm gusts near 20-23 kts at the Boarding Station.

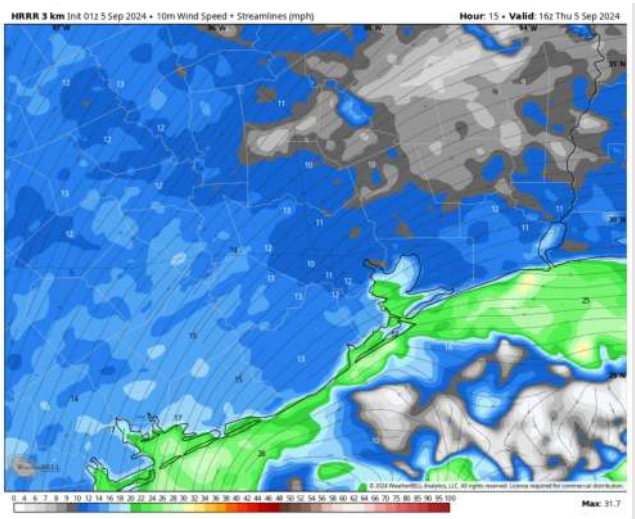
High Temps: **N of Morgan's Point:** Mid to Upper 80s F. **S of Morgan's Point:** Low to Mid 80s F.

Visibility: Not anticipating any concerns for today, outside of heavier downpours reducing visibilities to less than 3 miles.

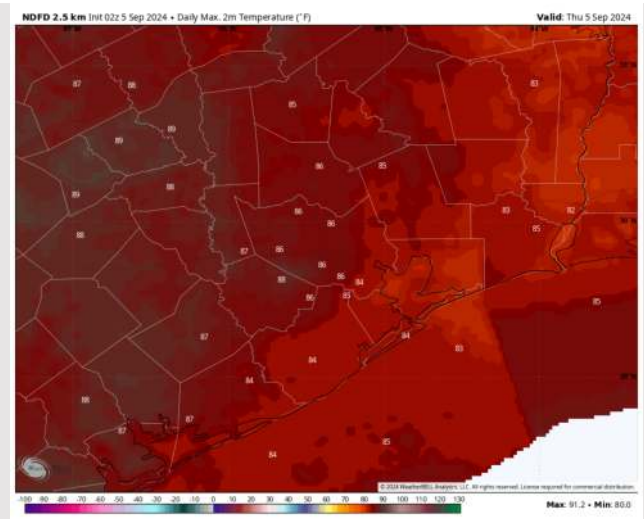
Precip Image: 1 PM CT



Wind Speed:
11 AM CT



High Temps
Today



Houston Pilots: FRI. 9/6/2024



Forecast Discussion

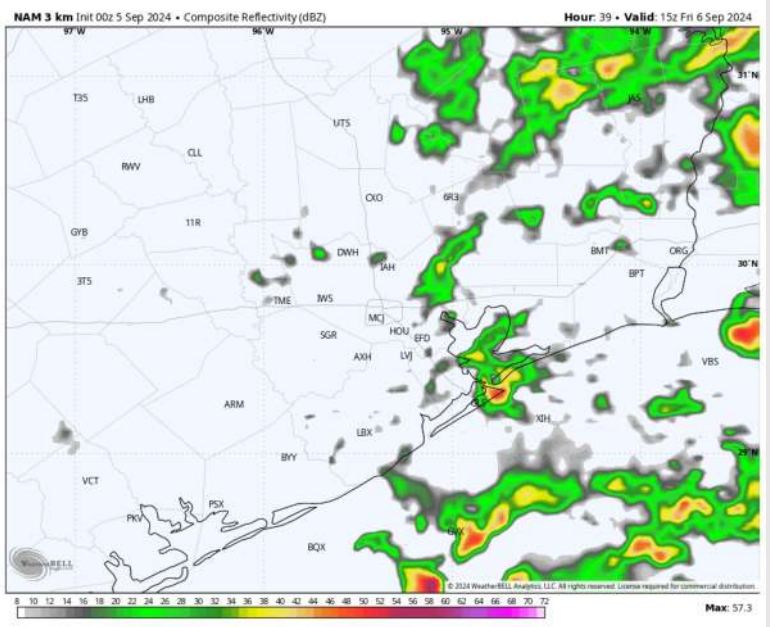
Precip: Scattered chances for showers and storms to start the period on Friday and continue through ~ 7PM.

Wind: Winds will be out of the NE throughout the day. **N of Morgan's Point:** Winds will be sustained 7 - 12 kts throughout Friday. **S of Morgan's Point:** Winds will be sustained at 14 - 18 kts, with gusts of 18 - 25 kts possible for stations S of Morgan's Point.

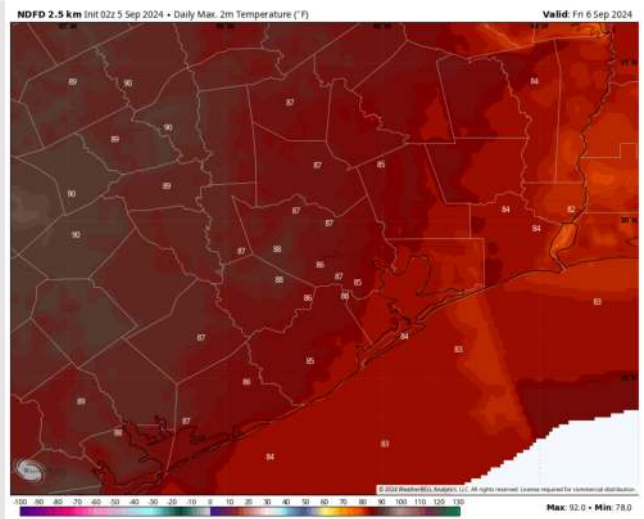
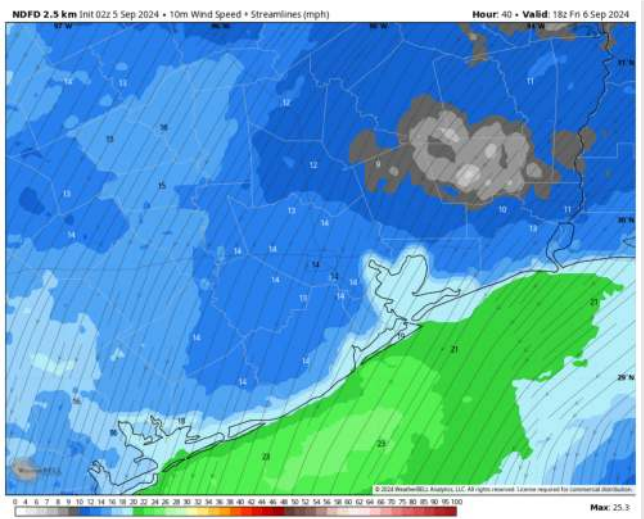
High Temps: **N of Morgan's Point:** Mid 80s F. **S of Morgan's Point:** Low 80s F.

Visibility: Not anticipating any fog concerns for Friday.

Precip Image: 10 AM CT



Wind Speed:
1 PM CT



High Temps
Friday

Houston Pilots: SAT. 9/7/2024



Forecast Discussion

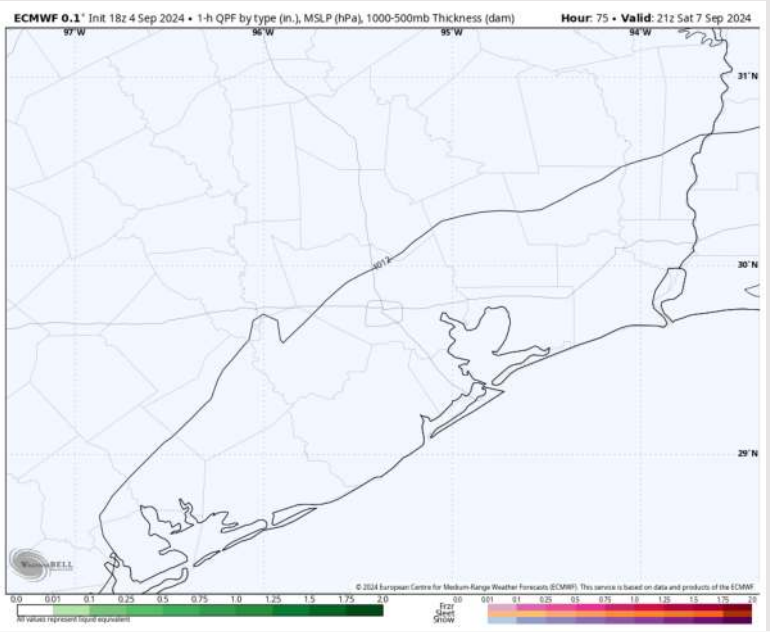
Precip: A few lingering, light showers through 3AM can't be ruled out, but at this time we are finally beginning to favor dry conditions for most of the day!

Wind: Winds will be generally out of the NE for the entire day. **N of Morgan's Point:** Winds at 7 - 12 kts for the entire day. **S of Morgan's Point:** Winds will be at 15 - 20 kts throughout the day. **Non-thunderstorm wind gusts of 25 kts will be possible for stations S of 11/12.**

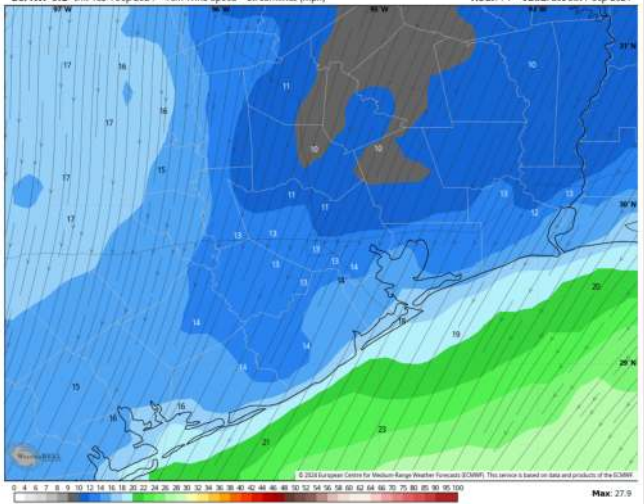
High Temps: **N of Morgan's Point:** Upper 80s F. **S of Morgan's Point:** Mid 80s F.

Visibility: Not favoring any fog concerns for Saturday.

Precip Image: 4 PM CT

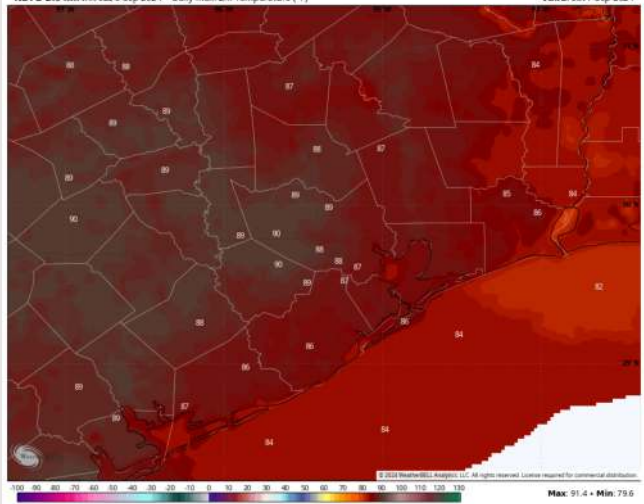


ECMWF 0.1' Init 18z 4 Sep 2024 • 10m Wind Speed • Streamlines (mph) Hour: 74 - Valid: 20z Sat 7 Sep 2024



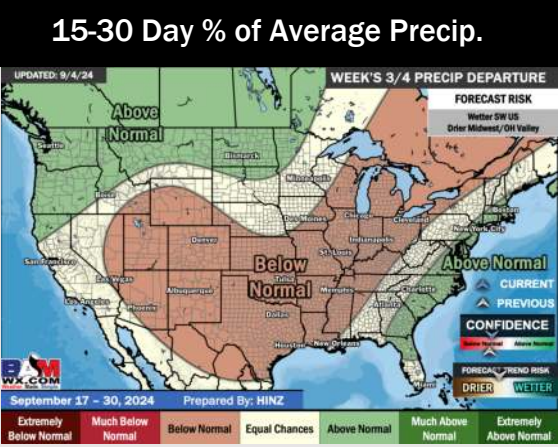
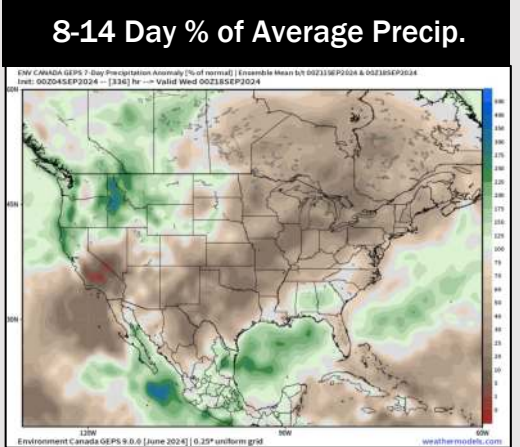
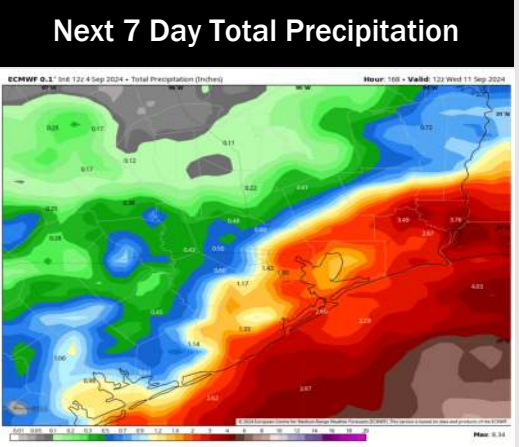
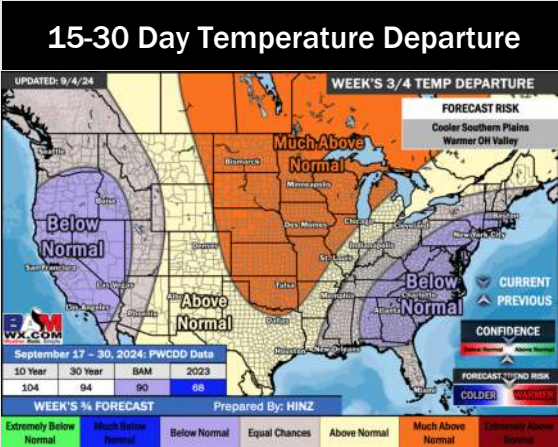
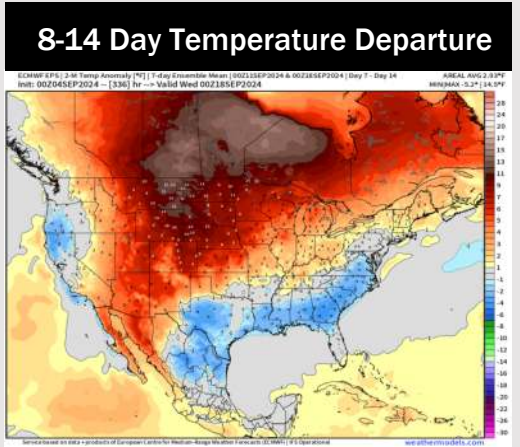
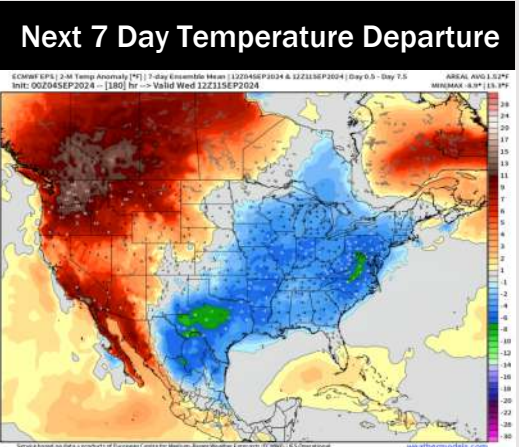
Wind Speed
3 PM CT

NDFD 2.5 km Init 02z 5 Sep 2024 • Daily Max. 2m Temperature (°F) Valid: Sat 7 Sep 2024



High Temps
Saturday

Houston Pilots: 9/5/24



- Temps are expected to be below normal for the week 1 timeframe. Scattered to widespread rain chances are expected daily through the rest of this week and into the weekend.
- Below normal temperatures are favored for week 2 with near to just below normal rain chances. Tropical activity threats for late Week 1 / early Week 2 and beyond will continue to be monitored
- Above normal temperatures and seasonable precipitation chances are expected for the weeks 3/4 timeframe.