

# Houston Pilots Forecast Package



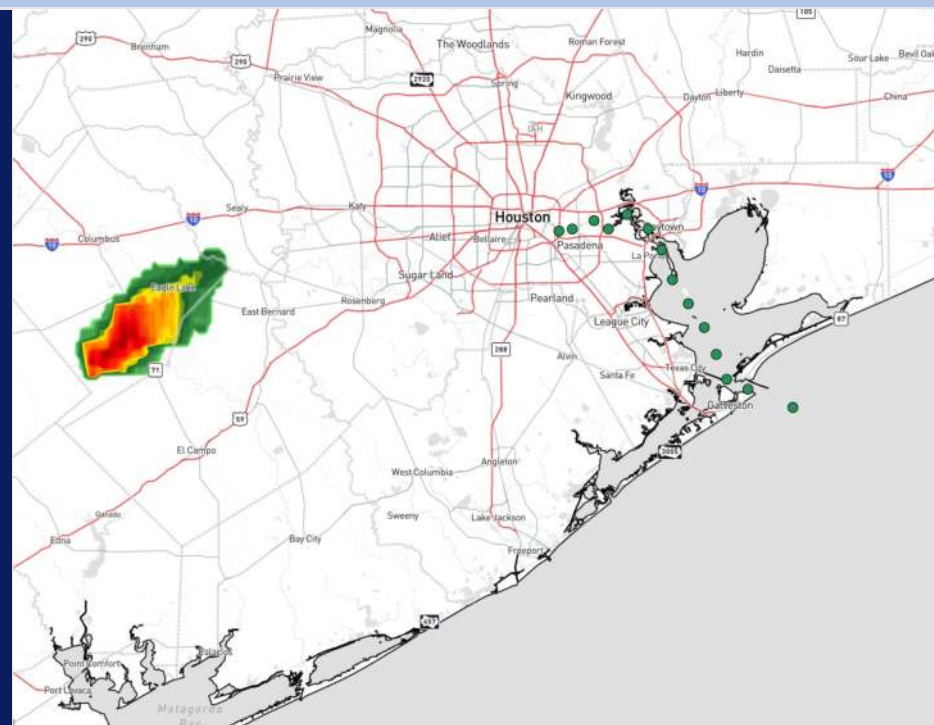
Updated: 12:45 AM CT

Wednesday, September 25, 2024

Forecaster: John Kemper

## Weather Headlines

- Scattered storm risks with gusts of up to **30 - 35kts** locally will be in play through this afternoon - evening.
- Not anticipating any visibility concerns for stations.
- **See latest Tropical Update for information on Tropical Storm Helene. No impacts favored for SE Texas.**



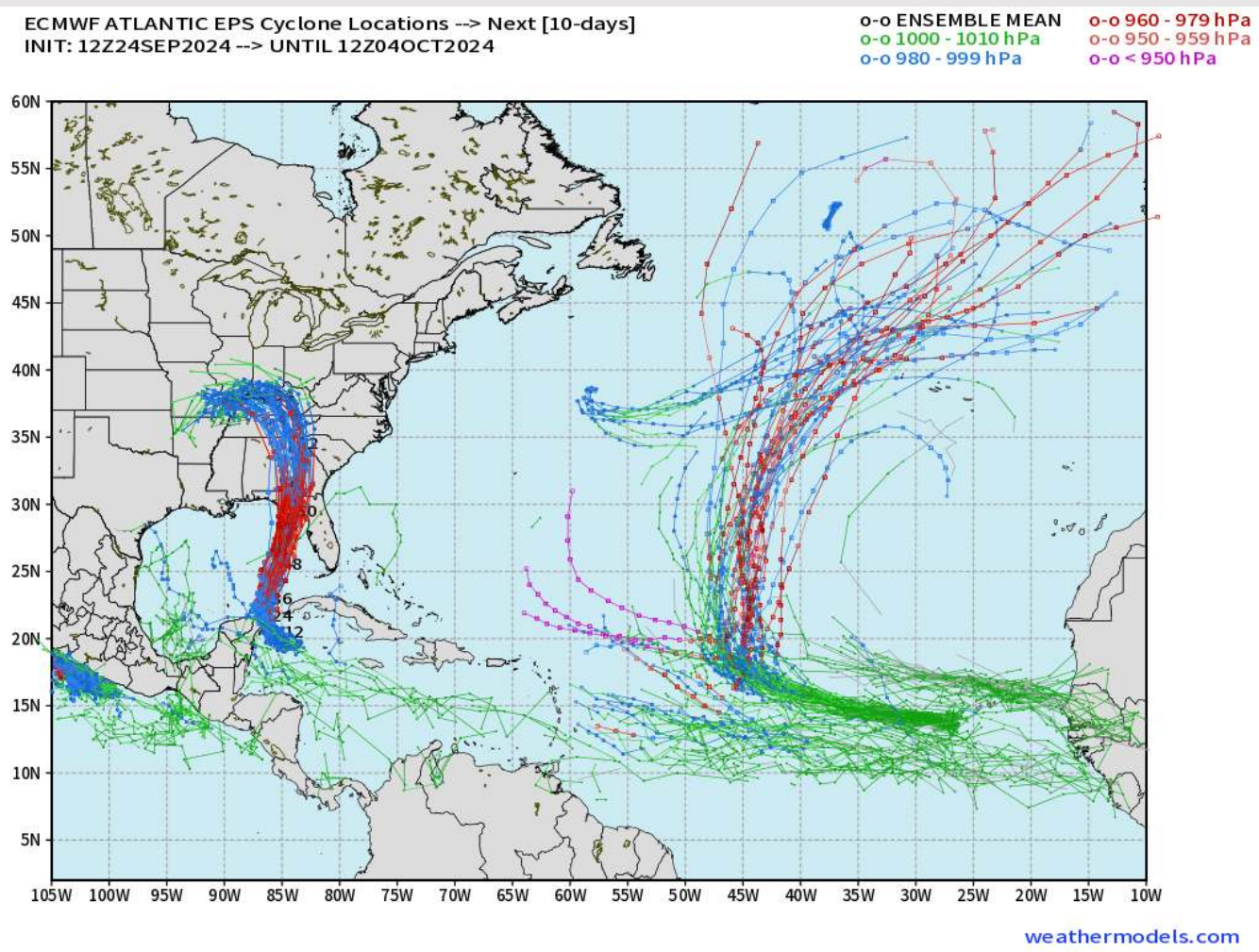
Current Radar: 12:38 AM CT



As always, please do not hesitate to reach out to us with any forecast questions via the chat option on Clarity or our on-call number, **(317)-560-8122** press **1** for forecast questions.

# Houston Pilots Tropical Update

## European Model Next 10 Days - Tropical Tracks




Tropical Storm Helene has developed in the Caribbean and is expected to track north over the next 36 hours before striking Florida.

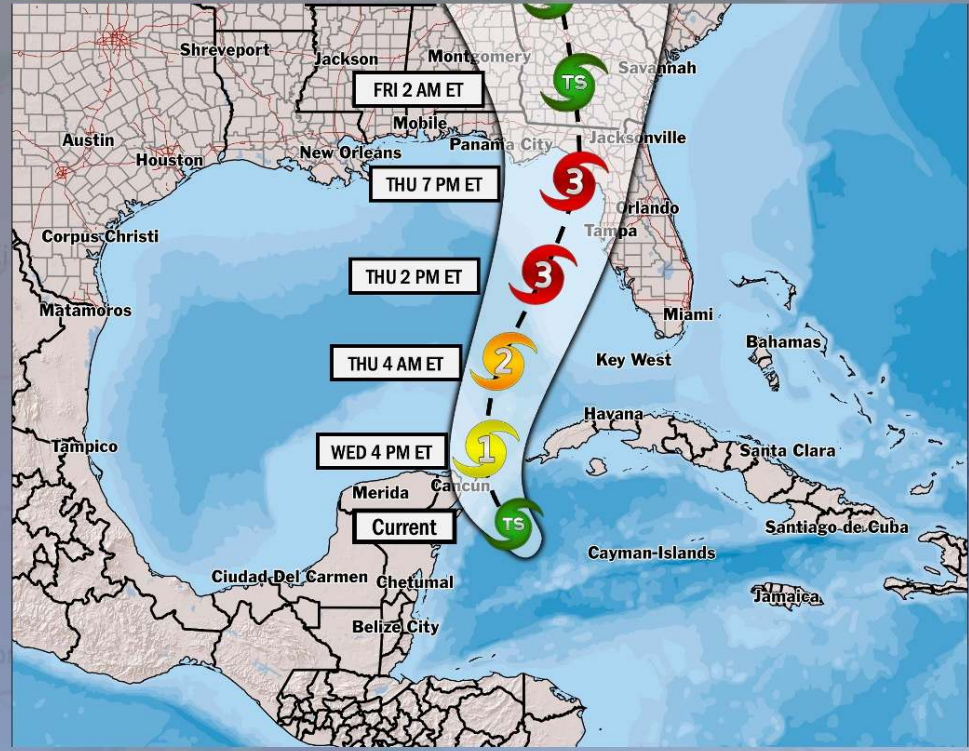
No impacts favored for SE Texas. For these reasons, we have opted against a Victor Trigger and have high confidence this will not change.



# Houston Pilots Tropical Update

 **Latest track for Helene**

**TROPICAL INSIGHT** 10:00 PM ET Tuesday, September 24, 2024 Forecaster: Clark/Kemper



**Landfall Timing: Thursday (9/26) at ~7PM**

- FORECAST NOTES:**
- ✓ Tropical storm Helene will graze the Yucatán Peninsula before strengthening into a Category 1 Hurricane.
  - ✓ The FL "Big Bend" currently in biggest risk area for a MAJOR hurricane.
  - ✓ Storm Surge of 10 – 15 Feet around landfall location.

# Houston Pilots Visibility Chart (miles)



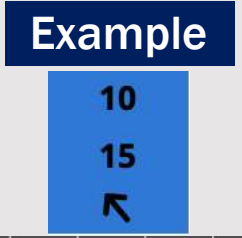
## Forecast Confidence



Visibility	Wed 2 am	Wed 3 am	Wed 4 am	Wed 5 am	Wed 6 am	Wed 7 am	Wed 8 am	Wed 9 am	Wed 10 am	Wed 11 am	Wed 12 pm	Wed 1 pm	Wed 2 pm	Wed 3 pm	Wed 4 pm	Wed 5 pm	Wed 6 pm	Wed 7 pm	Wed 8 pm	Wed 9 pm	Wed 10 pm	Wed 11 pm	Thu 12 am	Thu 1 am
Houston Pilots N - 610 Bridge	10	8	6.9	6.9	5.9	5.9	5.9	4.9	7.9	10	10	10	10	10	10	10	10	10	10	10	10	10	10	10
Houston Pilots M - Kinder 1	10	9	8	6.9	6.9	5.9	5.9	4.9	7.9	10	10	10	10	10	10	10	10	10	10	10	10	10	10	10
Houston Pilots L - Greens Bayou	10	10	8	6.9	6.9	6.9	5.9	4.9	10	10	10	10	10	10	10	10	10	10	10	10	10	10	10	10
Houston Pilots K - Shell Crude	10	10	9	8	6.9	6.9	6.9	5.9	10	10	10	10	10	10	10	10	10	10	10	10	10	10	10	10
Houston Pilots J - Lynchburg Ferries	10	10	9	6.9	6.9	6.9	6.9	4.9	10	10	10	10	10	10	10	10	10	10	10	10	10	10	10	10
Houston Pilots I - Exxon 3	10	10	10	8	6.9	6.9	6.9	5.9	10	10	10	10	10	10	10	10	10	10	10	10	10	10	10	10
Houston Pilots H - Morgans Point	10	10	10	10	6.9	6.9	6.9	5.9	10	10	10	10	10	10	10	10	10	10	10	10	10	10	10	10
Houston Pilots G - 75/76	10	10	10	10	9	8	8	6.9	10	10	10	10	10	10	10	10	10	10	10	10	10	10	9	9
Houston Pilots F - 63/64	10	10	10	10	9	9	9	6.9	10	10	10	10	10	10	10	10	10	10	10	10	10	10	9	9
Houston Pilots E - 51/52	10	10	10	10	10	10	10	6.9	10	10	10	10	10	10	10	10	10	10	10	10	10	10	9	9
Houston Pilots D - 37/38	10	10	10	10	10	10	10	6.9	10	10	10	10	10	10	10	10	10	10	10	10	10	10	9	9
Houston Pilots C - 25/26	10	10	10	10	10	10	10	7.9	10	10	10	10	10	10	10	10	10	10	10	10	10	10	9	9
Houston Pilots B - 11/12	10	10	10	10	10	10	10	7.9	10	10	10	10	10	10	10	10	10	10	10	10	10	10	9	9
Houston Pilots A - 1 & 2 Bravo	10	10	10	10	10	10	10	9	10	10	10	10	10	10	10	10	10	10	10	10	10	10	9	9

**NOTE: This is automated data that may/may not agree with the official BAM thinking that's found on the daily slides or special visibility report slides. This data should be used as a guide only**

# Houston Pilots Wind Chart



Wind	Wed 2 am	Wed 3 am	Wed 4 am	Wed 5 am	Wed 6 am	Wed 7 am	Wed 8 am	Wed 9 am	Wed 10 am	Wed 11 am	Wed 12 pm	Wed 1 pm	Wed 2 pm	Wed 3 pm	Wed 4 pm	Wed 5 pm	Wed 6 pm	Wed 7 pm	Wed 8 pm	Wed 9 pm	Wed 10 pm	Wed 11 pm	Thu 12 am	Thu 1 am
Houston Pilots N - 610 Bridge	2 5 ↗	2 5 ↗	2 5 ↗	2 5 →	2 5 →	2 5 →	2 6 ↘	2 6 ↘	3 7 ↘	3 8 ↘	5 9 ↘	6 10 ↘	6 12 ↘	6 13 ↘	6 14 ↘	6 13 ↘	6 14 ↘	7 14 ↘	6 13 ↘	7 13 ↘	7 14 ↘	7 15 ↘	8 16 ↘	8 16 ↘
Houston Pilots M - Kinder 1	2 5 ↗	2 5 ↗	2 5 →	2 5 →	2 5 →	2 5 →	2 5 ↘	2 6 ↘	3 7 ↘	3 8 ↘	5 9 ↘	6 10 ↘	6 12 ↘	6 13 ↘	6 14 ↘	6 13 ↘	6 14 ↘	6 13 ↘	6 13 ↘	7 13 ↘	7 13 ↘	7 14 ↘	8 15 ↘	8 16 ↘
Houston Pilots L - Greens Bayou	2 5 ↗	2 5 ↗	2 5 →	2 5 →	2 5 →	2 5 →	2 5 ↘	2 6 ↘	3 7 ↘	3 8 ↘	5 9 ↘	5 10 ↘	6 12 ↘	6 13 ↘	6 13 ↘	6 13 ↘	6 13 ↘	6 13 ↘	6 13 ↘	6 13 ↘	6 13 ↘	7 14 ↘	7 15 ↘	8 16 ↘
Houston Pilots K - Shell Crude	2 5 ↗	2 5 ↗	2 5 →	2 5 →	2 5 →	2 5 →	2 5 ↘	2 6 ↘	3 7 ↘	3 8 ↘	5 9 ↘	5 10 ↘	6 12 ↘	6 13 ↘	6 13 ↘	6 13 ↘	6 13 ↘	6 12 ↘	6 13 ↘	6 13 ↘	6 13 ↘	7 14 ↘	7 15 ↘	8 16 ↘
Houston Pilots J - Lynchburg Ferries	1 5 ↗	1 5 ↗	1 5 →	1 5 →	1 5 →	2 5 →	2 5 ↘	2 6 ↘	3 7 ↘	3 8 ↘	3 9 ↘	5 10 ↘	5 12 ↘	6 13 ↘	6 13 ↘	6 13 ↘	6 13 ↘	6 12 ↘	6 13 ↘	6 13 ↘	6 13 ↘	6 14 ↘	7 15 ↘	7 16 ↘
Houston Pilots I - Exxon 3	5 7 ↗	5 6 ↗	5 6 →	5 7 →	5 7 →	5 7 →	5 7 ↘	5 7 ↘	5 8 ↘	6 9 ↘	6 10 ↘	6 12 ↘	7 13 ↘	7 14 ↘	7 14 ↘	7 13 ↘	8 13 ↘	8 14 ↘	8 13 ↘	9 13 ↘	10 14 ↘	12 16 ↘	13 17 ↘	13 18 ↘
Houston Pilots H - Morgans Point	5 6 ↗	3 6 ↗	3 6 →	3 6 →	3 6 →	5 7 →	5 7 ↘	5 7 ↘	5 8 ↘	6 9 ↘	6 10 ↘	6 12 ↘	7 13 ↘	7 13 ↘	7 13 ↘	8 13 ↘	8 13 ↘	8 13 ↘	8 13 ↘	8 13 ↘	10 14 ↘	10 15 ↘	12 16 ↘	13 18 ↘
Houston Pilots G - 75/76	6 7 ↗	6 7 ↗	6 7 →	6 7 →	6 7 →	6 8 →	6 8 ↘	6 8 ↘	6 9 ↘	6 10 ↘	6 10 ↘	6 12 ↘	7 13 ↘	7 13 ↘	7 13 ↘	7 13 ↘	8 13 ↘	8 13 ↘	8 13 ↘	9 14 ↘	10 15 ↘	13 17 ↘	13 18 ↘	14 20 ↘
Houston Pilots F - 63/64	6 7 ↗	6 7 ↗	6 7 →	6 7 →	6 7 →	6 8 →	6 8 ↘	6 8 ↘	6 9 ↘	6 10 ↘	6 10 ↘	6 9 ↘	6 12 ↘	6 12 ↘	7 12 ↘	7 12 ↘	7 13 ↘	8 13 ↘	8 13 ↘	9 13 ↘	10 15 ↘	12 16 ↘	13 18 ↘	14 20 ↘
Houston Pilots E - 51/52	5 7 ↗	5 7 ↗	5 7 →	5 7 →	5 7 →	6 8 →	6 8 ↘	6 8 ↘	6 9 ↘	6 9 ↘	6 9 ↘	6 10 ↘	6 10 ↘	6 10 ↘	6 12 ↘	7 12 ↘	7 12 ↘	8 12 ↘	8 12 ↘	8 12 ↘	10 13 ↘	12 15 ↘	13 16 ↘	14 18 ↘
Houston Pilots D - 37/38	5 7 ↗	5 7 ↗	5 7 →	5 7 →	5 7 →	6 8 →	6 8 ↘	6 8 ↘	6 9 ↘	6 9 ↘	6 9 ↘	6 10 ↘	6 10 ↘	6 10 ↘	6 10 ↘	6 12 ↘	6 12 ↘	7 12 ↘	7 12 ↘	8 12 ↘	10 13 ↘	12 14 ↘	13 16 ↘	14 18 ↘
Houston Pilots C - 25/26	5 7 ↗	5 7 ↗	5 6 →	5 6 →	5 6 →	6 8 →	6 8 ↘	6 8 ↘	6 9 ↘	6 9 ↘	6 9 ↘	6 9 ↘	6 10 ↘	6 10 ↘	6 10 ↘	6 12 ↘	6 12 ↘	7 12 ↘	7 12 ↘	8 12 ↘	9 13 ↘	10 14 ↘	12 16 ↘	13 17 ↘
Houston Pilots B - 11/12	3 7 ↗	3 6 ↗	3 6 →	3 6 →	3 6 →	5 7 →	5 8 ↘	6 8 ↘	6 9 ↘	6 10 ↘	6 10 ↘	6 9 ↘	6 10 ↘	6 10 ↘	6 10 ↘	6 10 ↘	6 10 ↘	6 10 ↘	6 10 ↘	7 13 ↘	8 13 ↘	9 15 ↘	10 17 ↘	12 20 ↘
Houston Pilots A - 1 & 2 Bravo	5 7 ↗	5 7 ↗	5 7 →	5 7 →	5 7 →	6 8 →	6 9 ↘	6 9 ↘	6 10 ↘	6 10 ↘	6 10 ↘	6 9 ↘	6 10 ↘	6 10 ↘	6 10 ↘	6 12 ↘	6 12 ↘	7 12 ↘	7 12 ↘	8 12 ↘	10 13 ↘	12 15 ↘	13 17 ↘	14 18 ↘

**NOTE:** This is automated data that may/may not agree with the official BAM thinking that's found on the daily slides. This data should be used as a guide only.



# Houston Pilots: WED. 9/25/2024



## Forecast Discussion

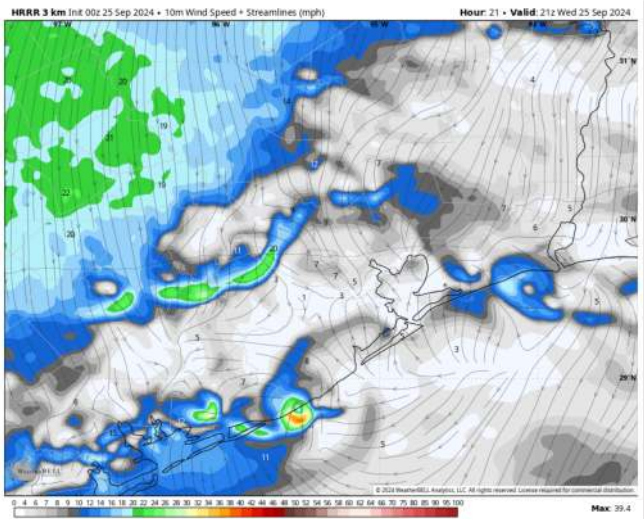
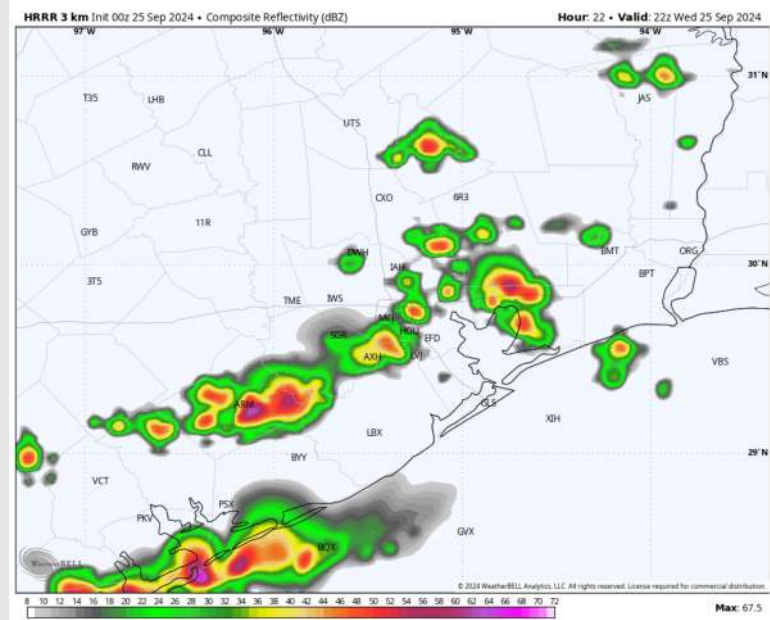
**Precip:** A few isolated showers (10%) can't be ruled out from 11AM – 3PM for stations N of Morgan's Point. From 3PM – 8PM, 1 – 2 rounds of downpours and storms are expected to impact all stations (60% chances). **Stronger gusts of up to 35kts can't be ruled out.**

**Wind:** Winds will be variable in direction through 8 PM, settling out of the NE throughout the rest of this evening. **N of Morgan's Point:** Winds at 3-8 kts through 8PM before increasing to 7 – 11 kts for the remainder of Wednesday evening. **S of Morgan's Point:** Winds will be 5-10 kts for all of Wednesday.

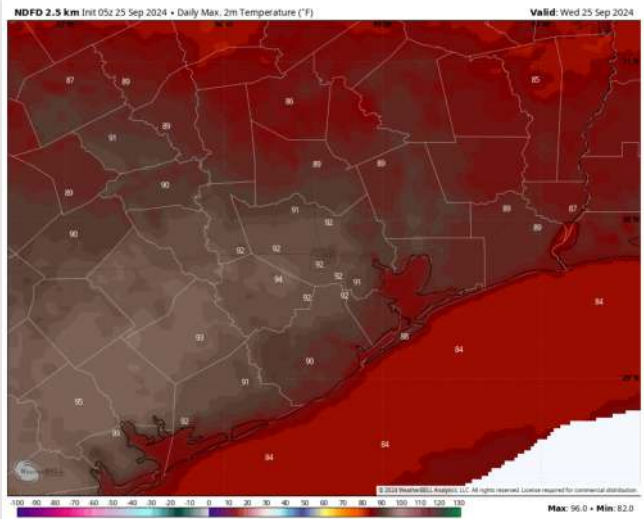
**High Temps:** **N of Morgan's Point:** Low 90s F. **S of Morgan's Point:** Mid 80s F.

**Visibility:** Patchy fog risks will remain N / NW of all stations tonight!

## Precip Image: 5 PM CT



Wind Speed  
4 PM CT



High Temps  
Today

# Houston Pilots: THU. 9/26/2024



## Forecast Discussion

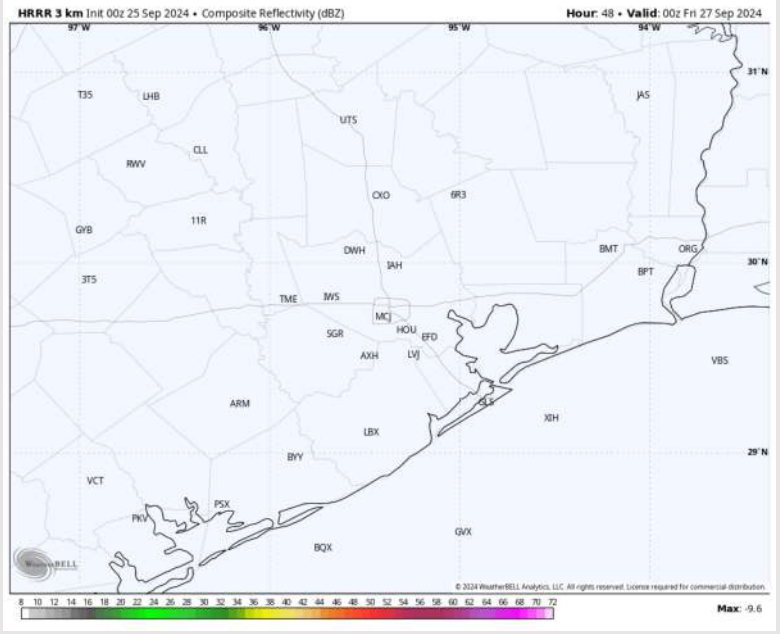
**Precip:** Favoring dry conditions at this time for Thursday.

**Wind:** Winds will be generally out of the NE through Thursday. **N of Morgan's Point:** Winds will be at 7 - 10 kts for all of Thursday. **S of Morgan's Point:** Winds will be at 5 - 10 kts through 5 AM before increasing to 10 - 15 kts by 8AM, and then increasing to 15 - 20 kts by 11AM, continuing through the rest of the Thursday. **Gusts S of Morgan's point (best risk at Boarding Station) will reach 25 - 30kts after 9AM.**

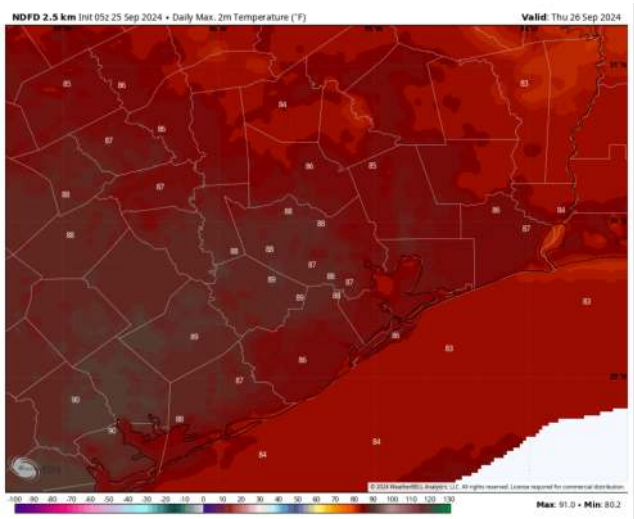
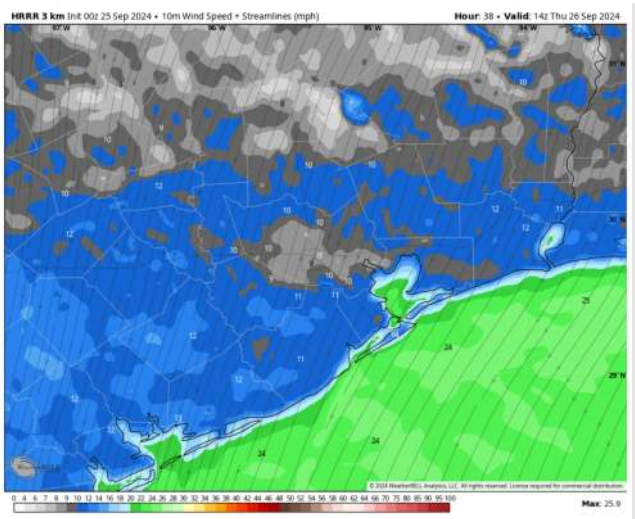
**High Temps:** **N of Morgan's Point:** Mid 80s F. **S of Morgan's Point:** Low 80s F.

**Visibility:** Not favoring any fog for Thursday.

## Precip Image: 7 PM CT



Wind Speed:  
9 AM CT



High Temps  
Thursday



# Houston Pilots: FRI. 9/27/2024



## Forecast Discussion

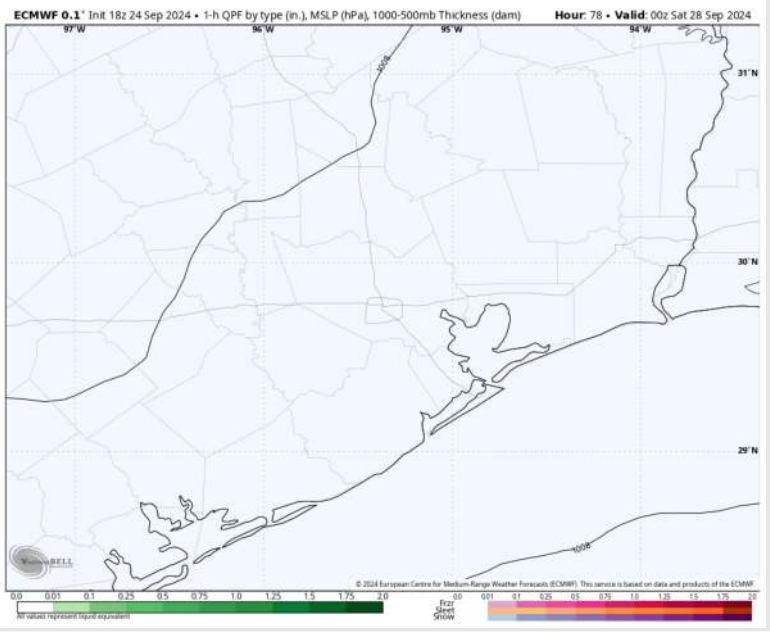
**Precip:** Favoring dry conditions at this time for Friday

**Wind:** Winds will begin to calm after 2AM Friday, becoming variable after this time frame through 8PM. After 8PM, winds will shift to out of the SW. **N of Morgan's Point:** Winds will be sustained at 3 - 8 kts throughout the day. **S of Morgan's Point:** Winds will start at 5 - 10 kts through 4AM before becoming 4- 8 kts for the remainder of the day.

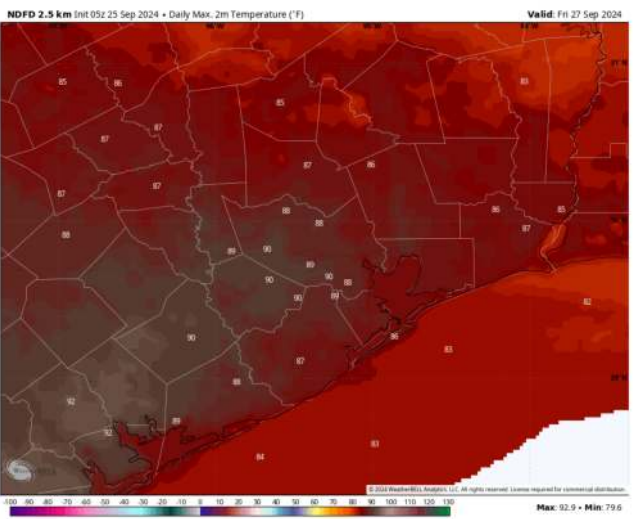
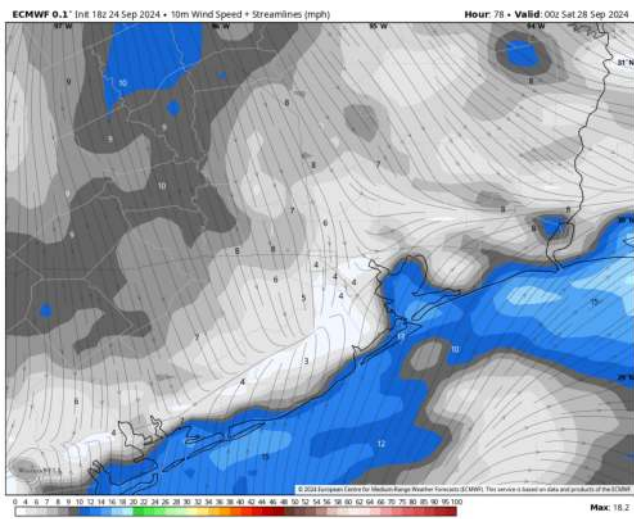
**High Temps:** **N of Morgan's Point:** Upper 80s F. **S of Morgan's Point:** Mid 80s F

**Visibility:** Not anticipating any visibility concerns for Friday.

## Precip Image: 7 PM CT



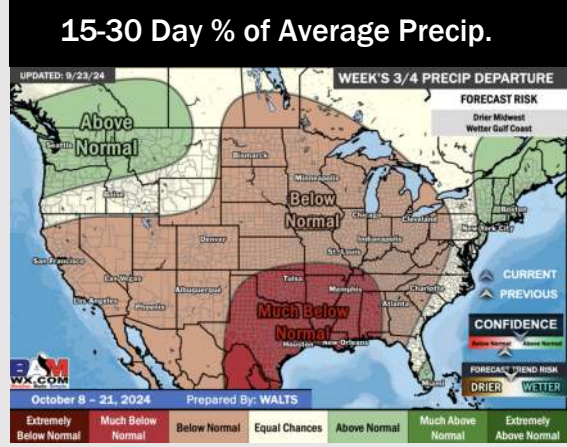
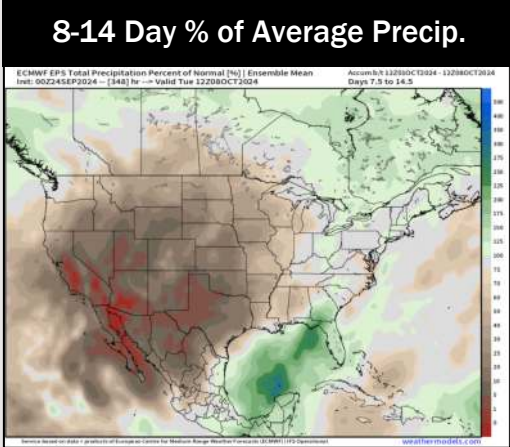
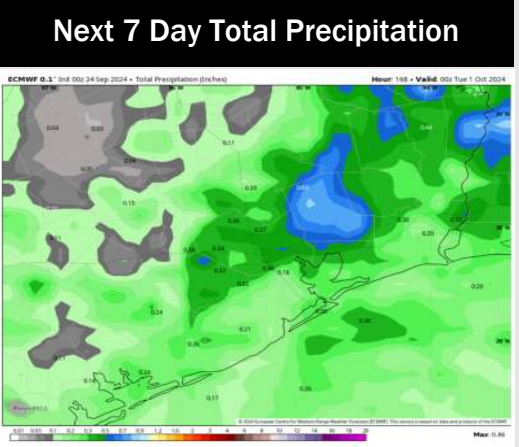
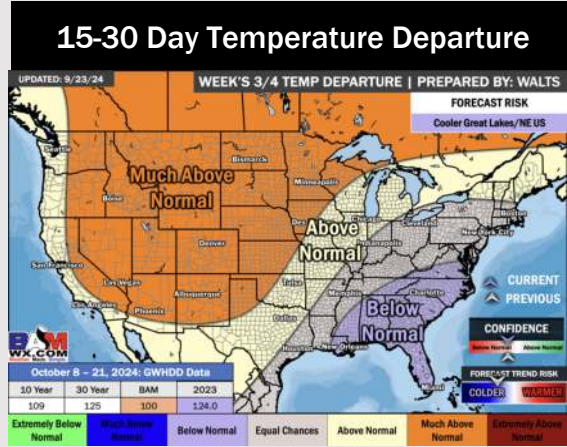
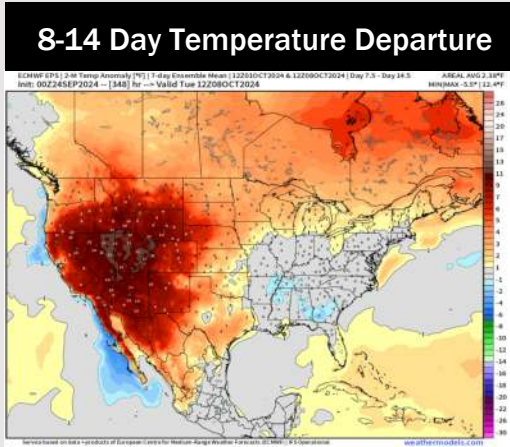
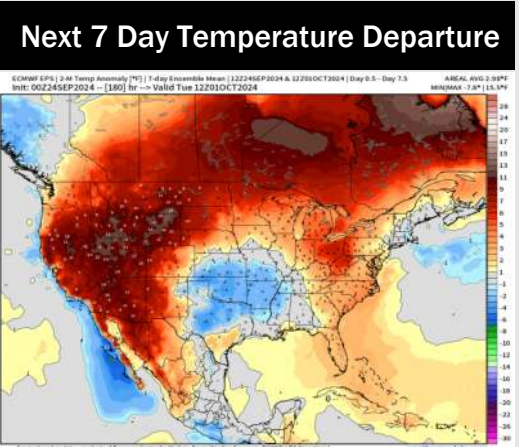
Wind Speed:  
7 PM CT



High Temps  
Friday



# Houston Pilots: 9/25/24



- Temps are expected to be near normal for the week 1 timeframe. Favoring scattered rain chances the next couple days with a drier back half of the week.
- Above normal temperatures are favored for week 2. Confidence is low on rain chances due to additional tropical risks for Week 2.
- Near normal temperatures and much below normal precipitation chances are expected for the weeks ¾ timeframe.