

# Houston Pilots Forecast Package



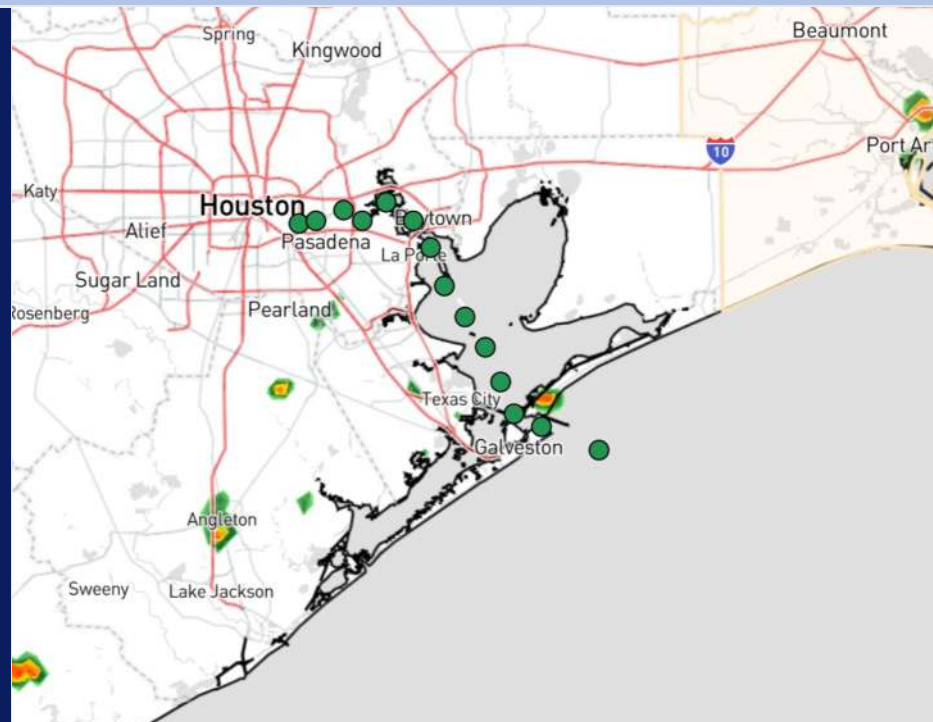
Updated: 1:15 PM CT

Tuesday, September 24, 2024

Forecaster: Alyssa Elliott

## Weather Headlines

- Scattered storm risks with gusts of up to **30 - 35kts** locally will be in play through Wed PM
- Not anticipating any visibility concerns.
- **See latest Tropical Update for information on Tropical Storm Helene. No impacts favored for SE Texas.**



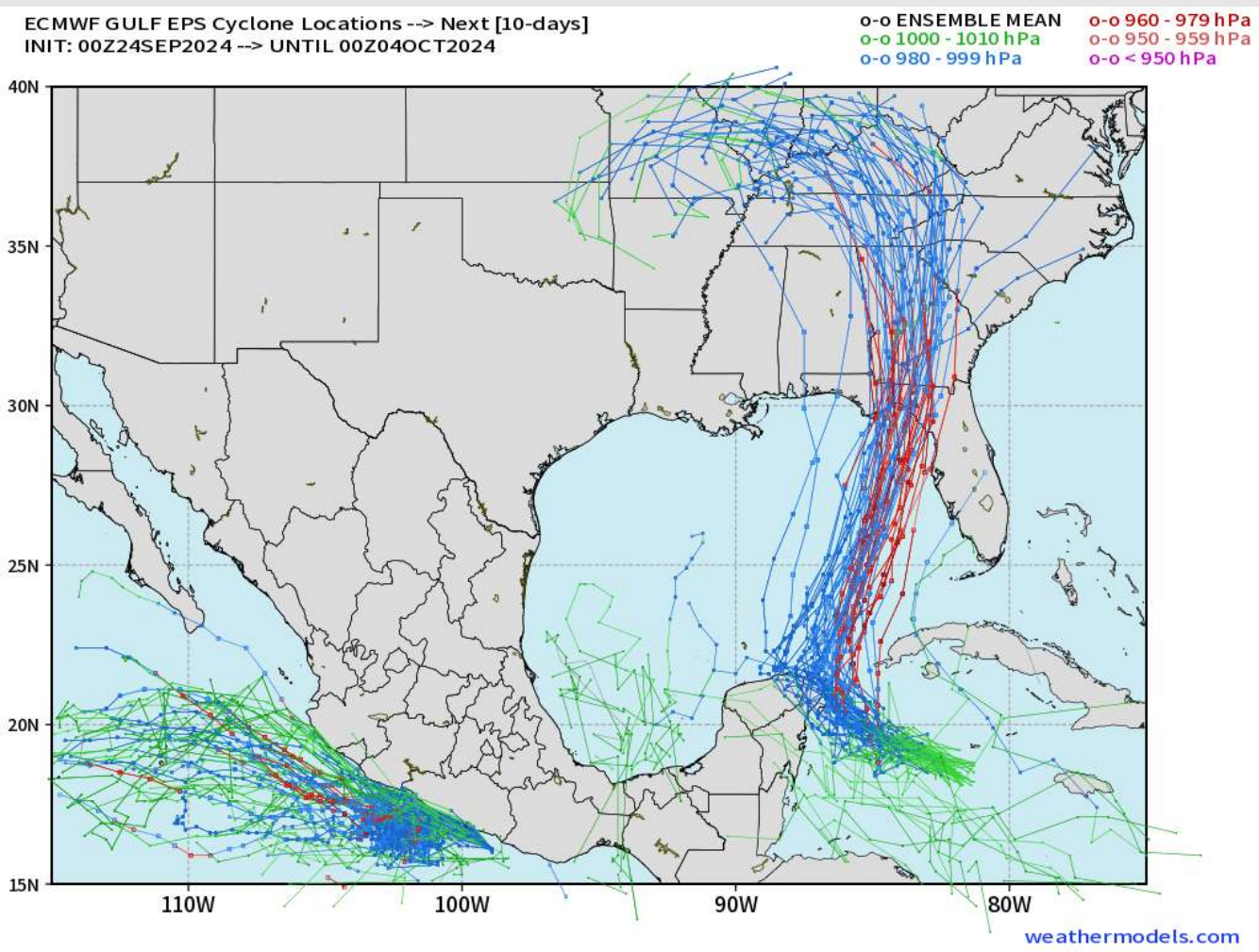
Current Radar: 1:00 PM CT



As always, please do not hesitate to reach out to us with any forecast questions via the chat option on Clarity or our on-call number, **(317)-560-8122** press **1** for forecast questions.

# Houston Pilots Tropical Update

## European Model Next 10 Days - Tropical Tracks



Tropical Storm Helene has developed in the Caribbean and is expected to track north over the coming days.

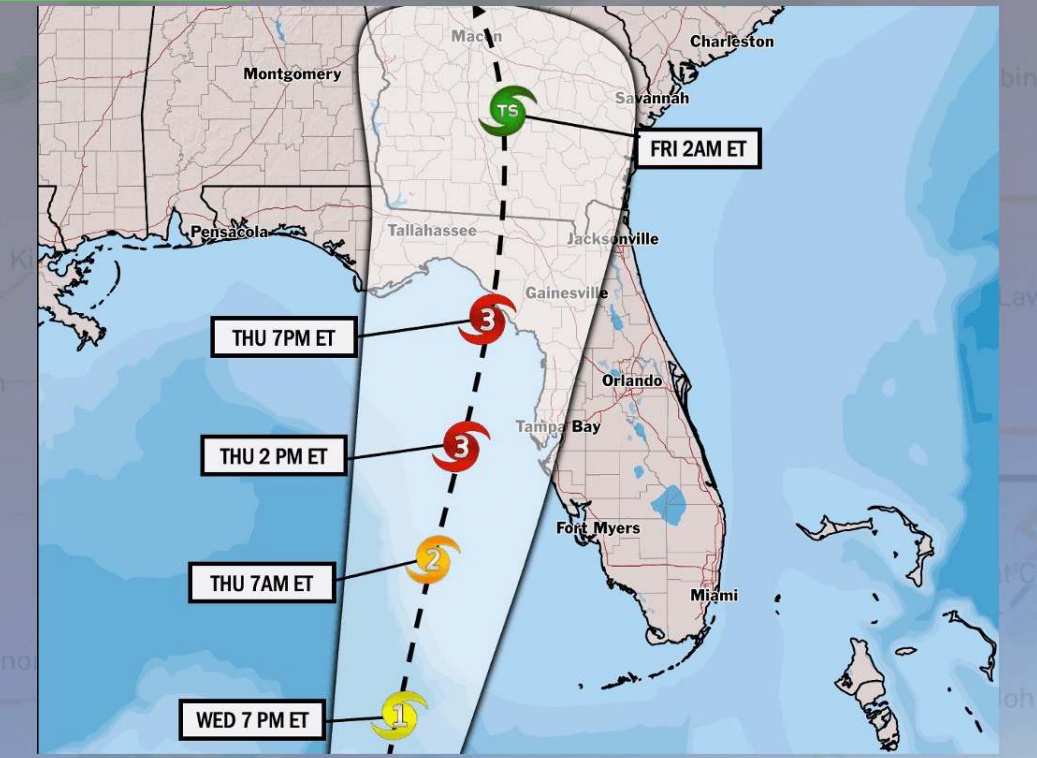
At this time, trends continue to suggest tropical storm /hurricane risks will remain well to the east of SE Texas. For these reasons, we have opted against a Victor Trigger.

# Houston Pilots Tropical Update



## Potential Hurricane Helene

**TROPICAL INSIGHT** 11:15 AM ET Tuesday, September 24, 2024 Forecaster: Clark/Kemper



**Landfall Timing: Thursday (9/26) Evening**

- FORECAST NOTES:**
- ✓ Storm is now officially a Tropical Storm. Favoring a slower timetable for intensification compared to previous update.
  - ✓ Florida Panhandle currently in biggest risk area for a MAJOR hurricane.
  - ✓ Storm Surge of 10 – 15 Feet around landfall location.

# Houston Pilots Visibility Chart (miles)



## Forecast Confidence



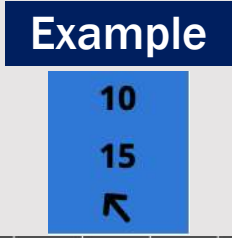
Visibility	Tue 2 pm	Tue 3 pm	Tue 4 pm	Tue 5 pm	Tue 6 pm	Tue 7 pm	Tue 8 pm	Tue 9 pm	Tue 10 pm	Tue 11 pm	Wed 12 am	Wed 1 am	Wed 2 am	Wed 3 am	Wed 4 am	Wed 5 am	Wed 6 am	Wed 7 am	Wed 8 am	Wed 9 am	Wed 10 am	Wed 11 am	Wed 12 pm	Wed 1 pm
Houston Pilots N - 610 Bridge	10	10	10	10	10	10	10	10	10	10	10	10	10	10	7.9	7.9	6.9	6.9	4.9	6.9	10	10	10	10
Houston Pilots M - Kinder 1	10	10	10	10	10	10	10	10	10	10	10	10	10	10	9	7.9	6.9	6.9	4.9	6.9	10	10	10	10
Houston Pilots L - Greens Bayou	10	10	10	10	10	10	10	10	10	10	10	10	10	10	7.9	7.9	6.9	6.9	4.9	6.9	10	10	10	10
Houston Pilots K - Shell Crude	10	10	10	10	10	10	10	10	10	10	10	10	10	10	9	7.9	6.9	6.9	4.9	6.9	10	10	10	10
Houston Pilots J - Lynchburg Ferries	10	10	10	10	10	10	10	10	10	10	10	10	10	10	7.9	7.9	6.9	6.9	4.9	6.9	10	10	10	10
Houston Pilots I - Exxon 3	10	10	10	10	10	10	10	10	10	10	10	10	10	10	9	7.9	6.9	6.9	4.9	6.9	10	10	10	10
Houston Pilots H - Morgans Point	10	10	10	10	10	10	10	10	10	10	10	10	10	10	9	7.9	6.9	6.9	4.9	6.9	10	10	10	10
Houston Pilots G - 75/76	10	10	10	10	10	10	10	10	10	10	10	10	10	10	10	10	10	9	7.9	6.9	10	10	10	10
Houston Pilots F - 63/64	10	10	10	10	10	10	10	10	10	10	10	10	10	10	10	10	10	9	9	6.9	10	10	10	10
Houston Pilots E - 51/52	10	10	10	10	10	10	10	10	10	10	10	10	10	10	10	10	10	10	9	7.9	10	10	10	10
Houston Pilots D - 37/38	10	10	10	10	10	10	10	10	10	10	10	10	10	10	10	10	10	10	9	7.9	10	10	10	10
Houston Pilots C - 25/26	10	10	10	10	10	10	10	10	10	10	10	10	10	10	10	10	10	10	10	9	10	10	10	10
Houston Pilots B - 11/12	10	10	10	10	10	10	10	10	10	10	10	10	10	10	10	10	10	10	10	9	10	10	10	10
Houston Pilots A - 1 & 2 Bravo	10	10	10	10	10	10	10	10	10	10	10	10	10	10	10	10	10	10	10	7.9	10	10	10	10

**NOTE: This is automated data that may/may not agree with the official BAM thinking that's found on the daily slides or special visibility report slides. This data should be used as a guide only**

# Houston Pilots Wind Chart



Sustained wind 10 Knots  
 Gusts 15 Knots  
 Wind from the SE



Wind	Tue 2 pm	Tue 3 pm	Tue 4 pm	Tue 5 pm	Tue 6 pm	Tue 7 pm	Tue 8 pm	Tue 9 pm	Tue 10 pm	Tue 11 pm	Wed 12 am	Wed 1 am	Wed 2 am	Wed 3 am	Wed 4 am	Wed 5 am	Wed 6 am	Wed 7 am	Wed 8 am	Wed 9 am	Wed 10 am	Wed 11 am	Wed 12 pm	Wed 1 pm
Houston Pilots N - 610 Bridge	3 ←	3 ←	5 ↖	6 ↖	6 ↖	5 ↖	5 ↖	3 ↖	3 ↖	3 ↖	2 ↖	2 ↖	2 ↖	2 ↖	2 ↖	2 ↖	2 ↖	2 ↖	3 ↖	3 ↖	3 ↖	5 ↖	5 ↖	6 ↖
Houston Pilots M - Kinder 1	3 ←	3 ←	5 ↖	6 ↖	6 ↖	5 ↖	5 ↖	3 ↖	3 ↖	3 ↖	2 ↖	2 ↖	2 ↖	2 ↖	2 ↖	2 ↖	2 ↖	2 ↖	3 ↖	3 ↖	3 ↖	5 ↖	6 ↖	6 ↖
Houston Pilots L - Greens Bayou	3 ←	5 ↖	5 ↖	6 ↖	6 ↖	5 ↖	5 ↖	3 ↖	3 ↖	2 ↖	2 ↖	2 ↖	2 ↖	2 ↖	2 ↖	2 ↖	2 ↖	2 ↖	3 ↖	3 ↖	3 ↖	5 ↖	5 ↖	6 ↖
Houston Pilots K - Shell Crude	3 ←	5 ↖	6 ↖	6 ↖	6 ↖	5 ↖	5 ↖	3 ↖	3 ↖	2 ↖	2 ↖	2 ↖	2 ↖	2 ↖	2 ↖	2 ↖	2 ↖	2 ↖	3 ↖	3 ↖	3 ↖	5 ↖	5 ↖	6 ↖
Houston Pilots J - Lynchburg Ferries	3 ←	3 ←	5 ↖	6 ↖	6 ↖	5 ↖	3 ↖	3 ↖	2 ↖	2 ↖	2 ↖	1 ↖	1 ↖	1 ↖	1 ↖	2 ↖	2 ↖	2 ↖	2 ↖	3 ↖	3 ↖	3 ↖	5 ↖	5 ↖
Houston Pilots I - Exxon 3	6 ↖	7 ↖	8 ↖	8 ↖	8 ↖	8 ↖	7 ↖	6 ↖	6 ↖	6 ↖	5 ↖	5 ↖	5 ↖	5 ↖	5 ↖	5 ↖	5 ↖	5 ↖	6 ↖	6 ↖	6 ↖	6 ↖	6 ↖	7 ↖
Houston Pilots H - Morgans Point	6 ↖	6 ↖	7 ↖	8 ↖	8 ↖	8 ↖	7 ↖	6 ↖	6 ↖	5 ↖	5 ↖	5 ↖	3 ↖	3 ↖	3 ↖	5 ↖	5 ↖	5 ↖	6 ↖	6 ↖	6 ↖	6 ↖	6 ↖	6 ↖
Houston Pilots G - 75/76	6 ↖	6 ↖	7 ↖	8 ↖	8 ↖	8 ↖	7 ↖	7 ↖	6 ↖	6 ↖	6 ↖	6 ↖	6 ↖	6 ↖	6 ↖	6 ↖	6 ↖	6 ↖	6 ↖	6 ↖	6 ↖	6 ↖	6 ↖	6 ↖
Houston Pilots F - 63/64	6 ←	6 ←	6 ↖	7 ↖	8 ↖	7 ↖	7 ↖	6 ↖	6 ↖	6 ↖	6 ↖	6 ↖	6 ↖	6 ↖	6 ↖	6 ↖	6 ↖	6 ↖	7 ↖	7 ↖	7 ↖	7 ↖	6 ↖	6 ↖
Houston Pilots E - 51/52	6 ←	6 ←	6 ↖	7 ↖	7 ↖	7 ↖	7 ↖	6 ↖	6 ↖	6 ↖	6 ↖	5 ↖	5 ↖	5 ↖	5 ↖	6 ↖	6 ↖	6 ↖	6 ↖	6 ↖	6 ↖	6 ↖	6 ↖	6 ↖
Houston Pilots D - 37/38	6 ←	6 ←	6 ↖	7 ↖	7 ↖	7 ↖	6 ↖	6 ↖	6 ↖	6 ↖	5 ↖	5 ↖	5 ↖	5 ↖	5 ↖	5 ↖	6 ↖	6 ↖	6 ↖	6 ↖	6 ↖	6 ↖	6 ↖	6 ↖
Houston Pilots C - 25/26	6 ←	6 ←	6 ↖	6 ↖	7 ↖	7 ↖	6 ↖	6 ↖	6 ↖	6 ↖	5 ↖	5 ↖	5 ↖	5 ↖	5 ↖	5 ↖	6 ↖	6 ↖	6 ↖	6 ↖	6 ↖	6 ↖	6 ↖	6 ↖
Houston Pilots B - 11/12	6 ←	6 ←	6 ↖	6 ↖	6 ↖	6 ↖	6 ↖	6 ↖	6 ↖	6 ↖	5 ↖	3 ↖	3 ↖	3 ↖	3 ↖	3 ↖	5 ↖	5 ↖	6 ↖	6 ↖	6 ↖	6 ↖	6 ↖	6 ↖
Houston Pilots A - 1 & 2 Bravo	6 ←	6 ←	6 ↖	6 ↖	6 ↖	6 ↖	6 ↖	6 ↖	6 ↖	6 ↖	5 ↖	5 ↖	5 ↖	5 ↖	5 ↖	6 ↖	6 ↖	6 ↖	6 ↖	6 ↖	6 ↖	6 ↖	6 ↖	6 ↖

**NOTE: This is automated data that may/may not agree with the official BAM thinking that's found on the daily slides. This data should be used as a guide only.**

# Houston Pilots: TUE. 9/24/2024



## Forecast Discussion

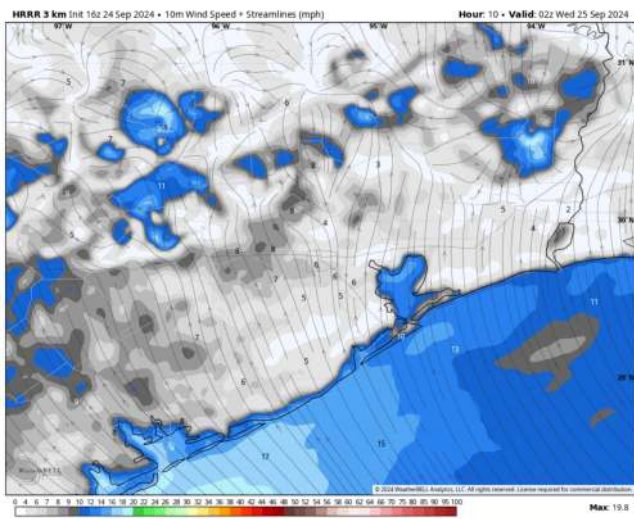
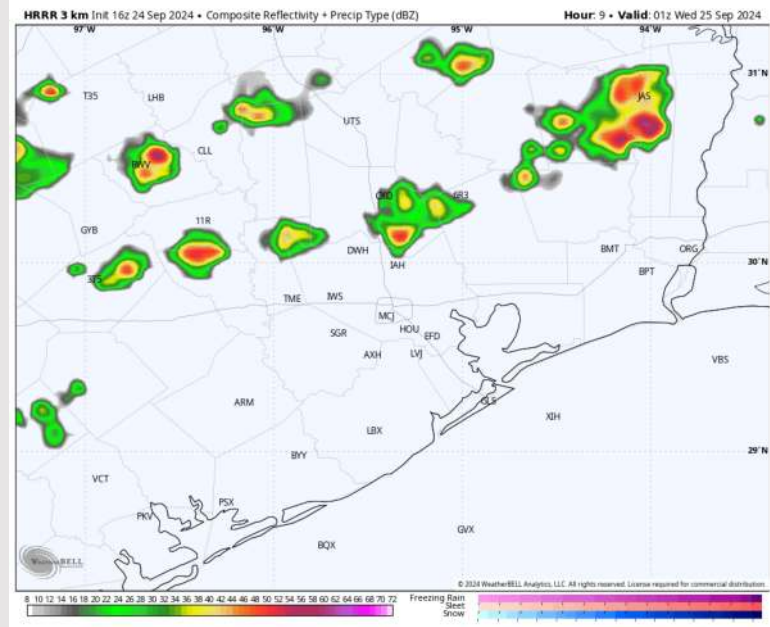
**Precip:** A few isolated showers will be possible for all stations until 5 PM. Scattered downpours and storms will then increase in coverage after 5 PM and through the rest of the PM, primarily N of Morgan's Point. **A few stronger gusts of up to 30 - 35kts can't be ruled out!**

**Wind:** Winds will be generally out of the SSE through the rest of the day.  
**N of Morgan's Point:** Winds will be sustained at 3 - 8 kts throughout the PM.  
**S of Morgan's Point:** Winds will be sustained at 13 - 18 kts through the PM with gusts up to 20 kts.

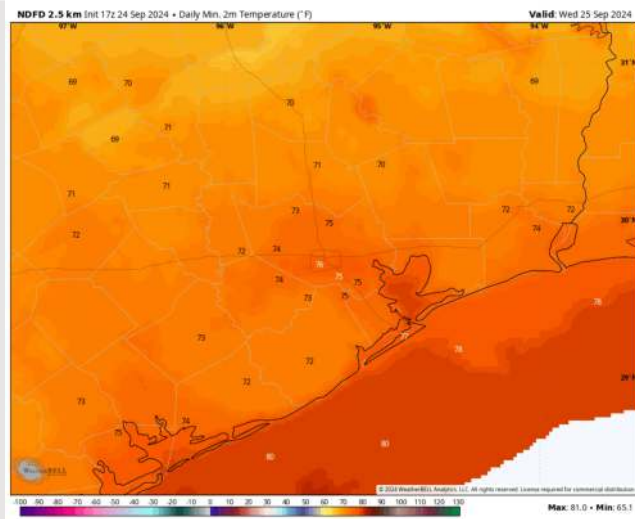
**Low Temps:** **N of Morgan's Point:** Mid 70s F. **S of Morgan's Point:** Upper 70s F

**Visibility:** Not anticipating any visibility concerns this PM.

## Precip Image: 8 PM CT



Wind Speed:  
9 PM CT



Low Temps  
WED AM

# Houston Pilots: WED. 9/25/2024



## Forecast Discussion

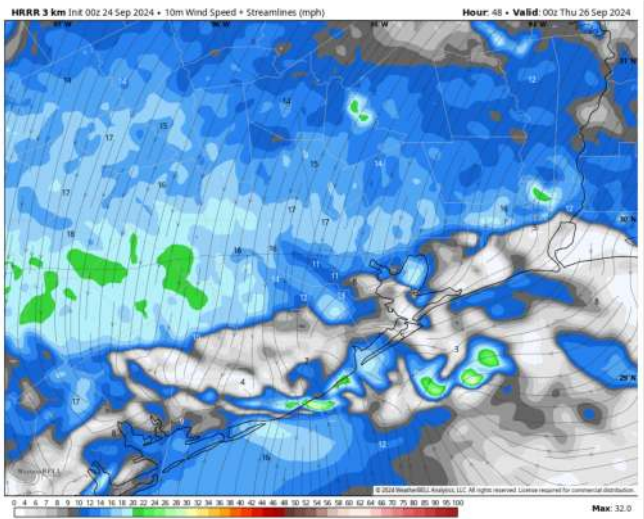
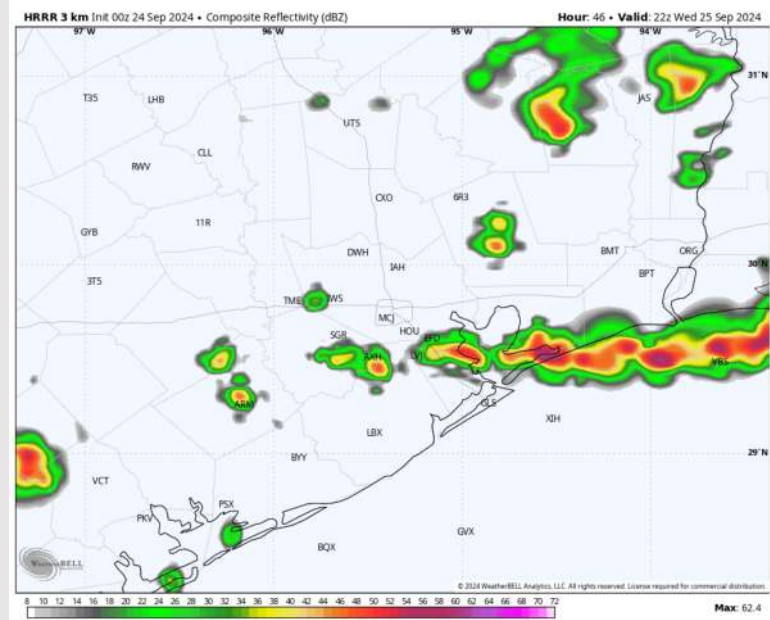
**Precip:** A few isolated showers (10%) can't be ruled out from 11AM – 3PM for stations N of Morgan's Point. From 3PM – 8PM, a broken line of downpours and storms is expected to impact all stations (70% chances). **Stronger gusts of up to 35kts can't be ruled out.**

**Wind:** Winds will be variable in direction through 8 PM, settling out of the NE throughout the rest of Wednesday evening. **N of Morgan's Point:** Winds at 3-8 kts through 8PM before increasing to 7 – 11 kts for the remainder of Wednesday evening. **S of Morgan's Point:** Winds will be 5-10 kts for all of Wednesday.

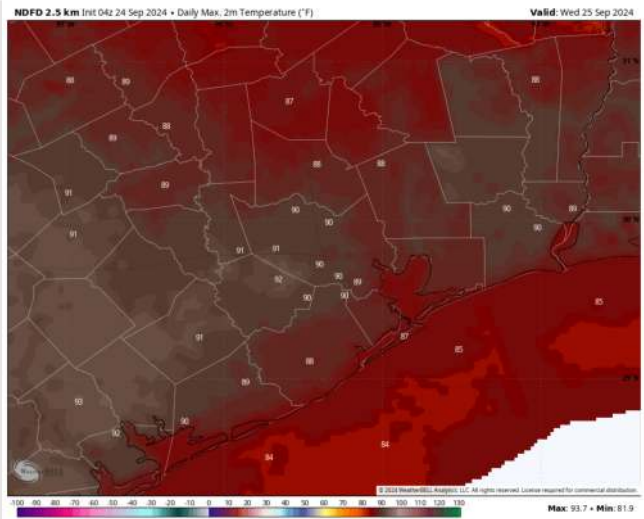
**High Temps:** **N of Morgan's Point:** Low 90s F. **S of Morgan's Point:** Mid 80s F.

**Visibility:** Not favoring any fog concerns for Wednesday.

## Precip Image: 5 PM CT



Wind Speed  
7 PM CT



High Temps  
Wednesday

# Houston Pilots: THU. 9/26/2024



## Forecast Discussion

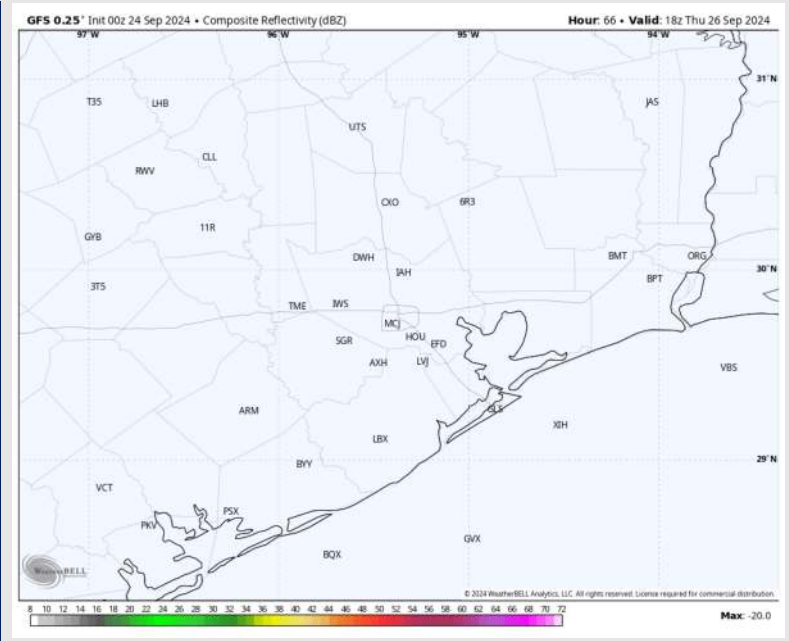
**Precip:** Favoring dry conditions at this time for Thursday.

**Wind:** Winds will be generally out of the NE through Thursday. *We need to watch trends for higher sustained wind potential!* **N of Morgan's Point:** Winds will be at 7 - 14 kts for all of Thursday. **S of Morgan's Point:** Winds will be at 5 - 10 kts through 5 AM before increasing to 10 - 15 kts by 8AM, and then increasing to 15 - 20 kts by 11AM, continuing through the rest of the Thursday. **Gusts S of Morgan's point (best risk at Boarding Station) will reach 25 - 30kts after 9AM.**

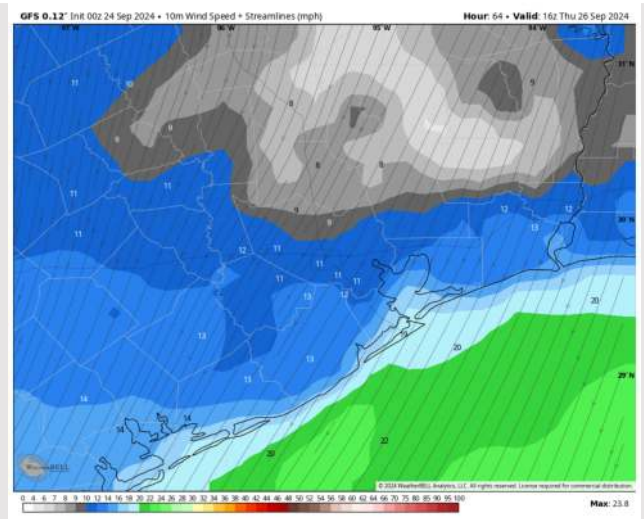
**High Temps:** **N of Morgan's Point:** Mid 80s F. **S of Morgan's Point:** Low 80s F.

**Visibility:** Not favoring any fog for Thursday.

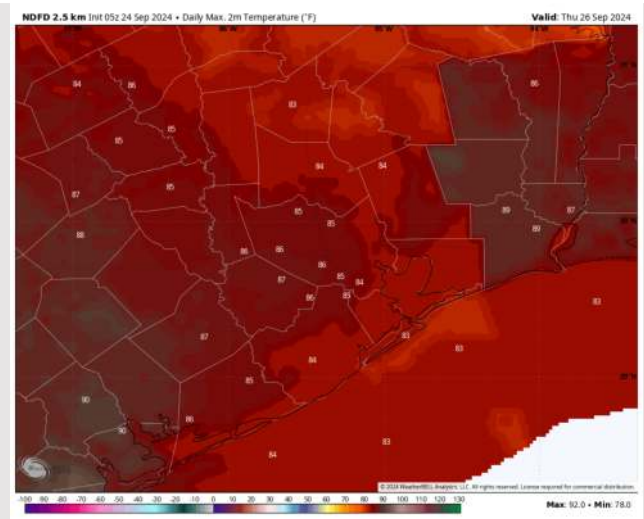
## Precip Image: 3 PM CT



Wind Speed:  
11 AM CT



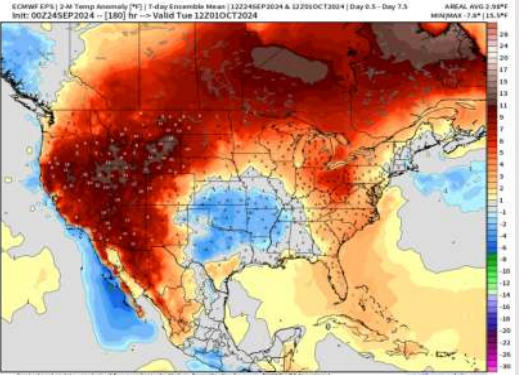
High Temps  
Thursday



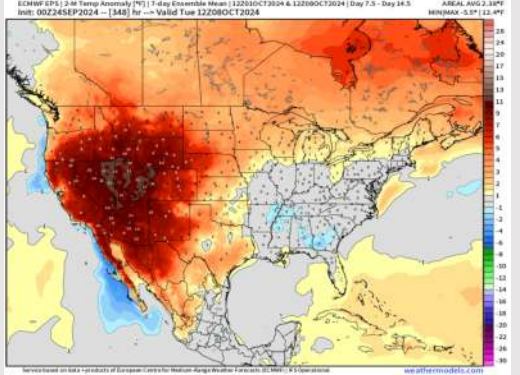


# Houston Pilots: 9/24/24

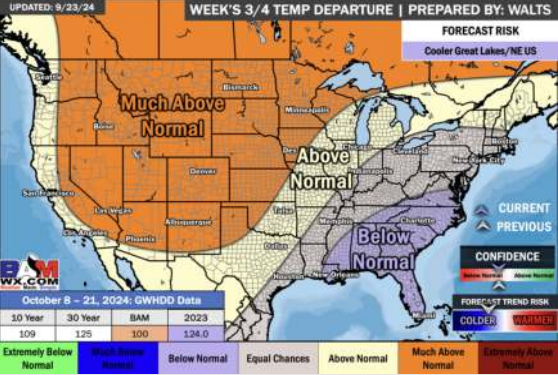
**Next 7 Day Temperature Departure**



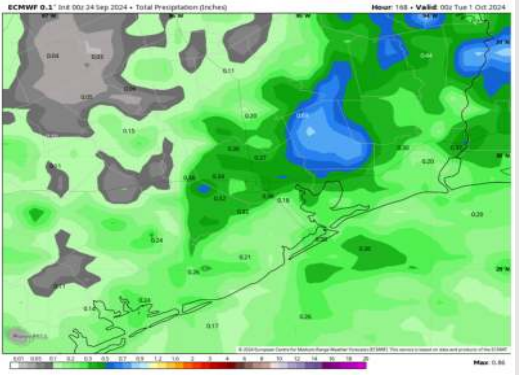
**8-14 Day Temperature Departure**



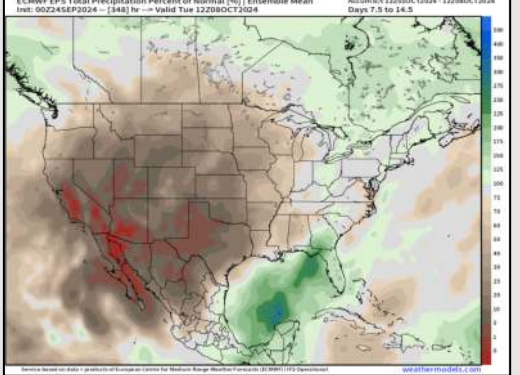
**15-30 Day Temperature Departure**



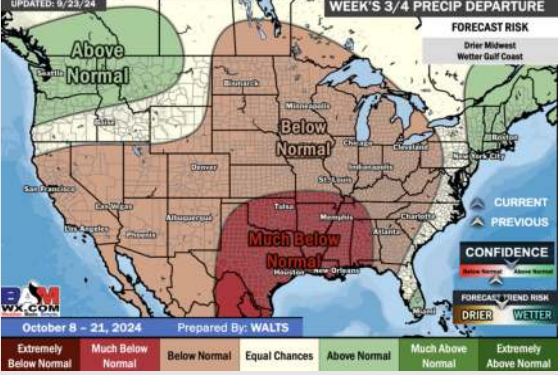
**Next 7 Day Total Precipitation**



**8-14 Day % of Average Precip.**



**15-30 Day % of Average Precip.**



- Temps are expected to be near normal for the week 1 timeframe. Favoring scattered rain chances the next couple days with a drier back half of the week.
- Above normal temperatures are favored for week 2. Confidence is low on rain chances due to additional tropical risks for Week 2.
- Near normal temperatures and much below normal precipitation chances are expected for the weeks ¾ timeframe.