

Houston Pilots Forecast Package



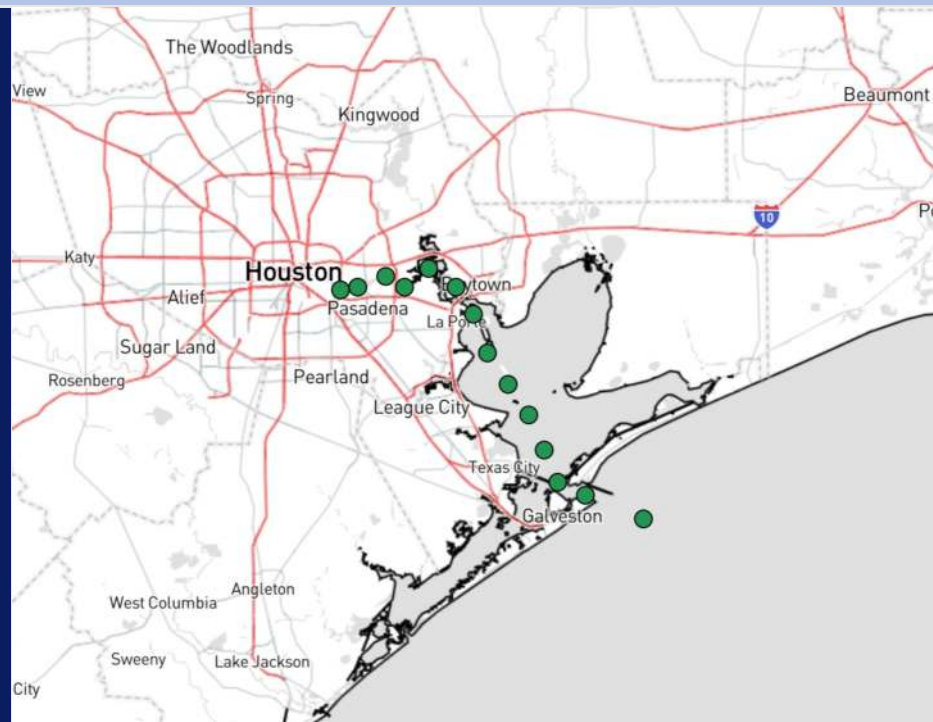
Updated: 12:45 AM CT

Tuesday, September 24, 2024

Forecaster: John Kemper

Weather Headlines

- Scattered storm risks with gusts of up to **30 - 35kts** locally will be in play through Wed PM
- All patchy fog risks for this AM will remain W of Stations.
- **See latest Tropical Update for information of Potential Cyclone 9. No impacts favored for SE Texas.**



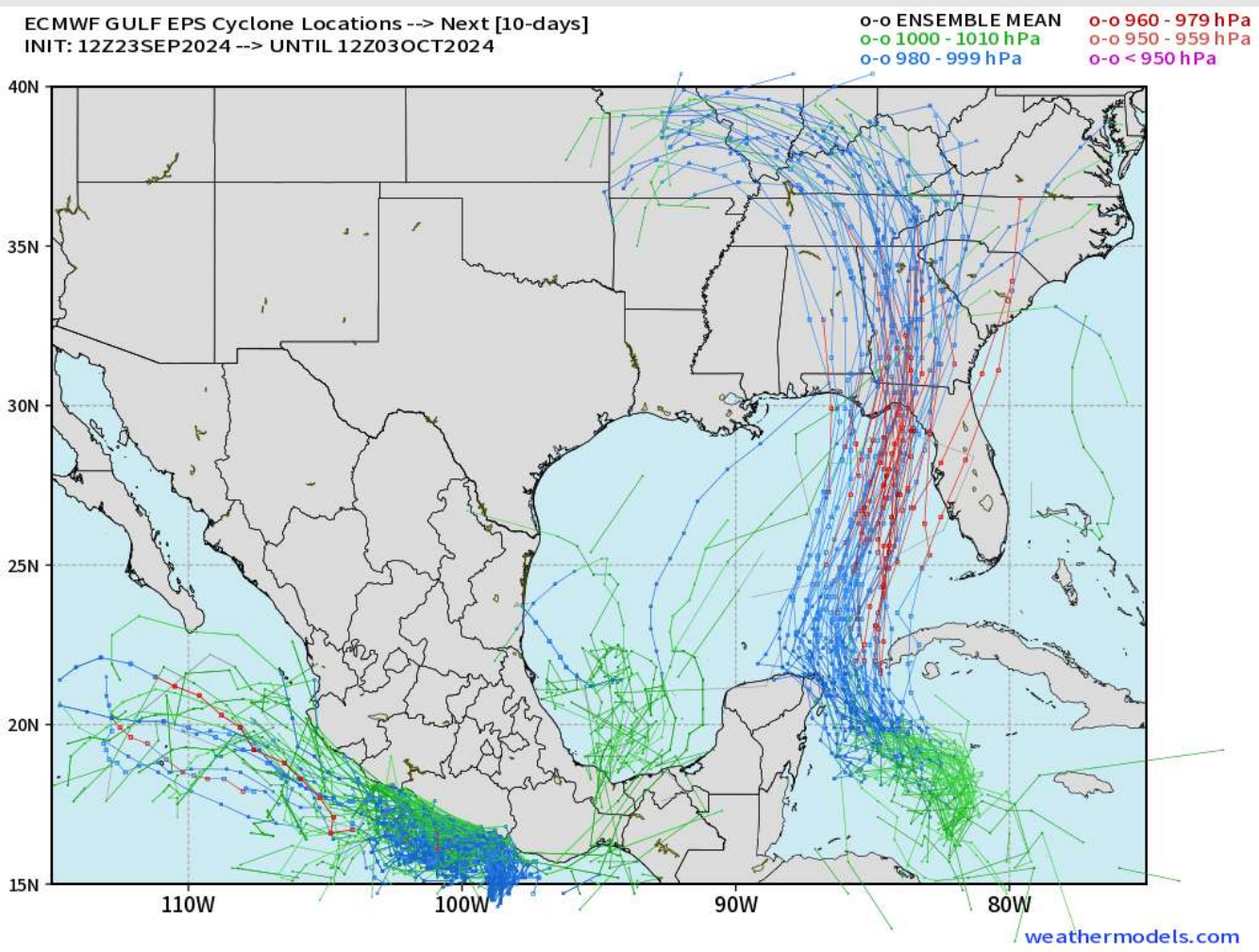
Current Radar: 12:40 AM CT



As always, please do not hesitate to reach out to us with any forecast questions via the chat option on Clarity or our on-call number, **(317)-560-8122** press **1** for forecast questions.

Houston Pilots Tropical Update

European Model Next 10 Days - Tropical Tracks



Potential Tropical Cyclone 9 has developed in the Caribbean. Cyclone expected to become *Helene* officially in the next 24 hours.

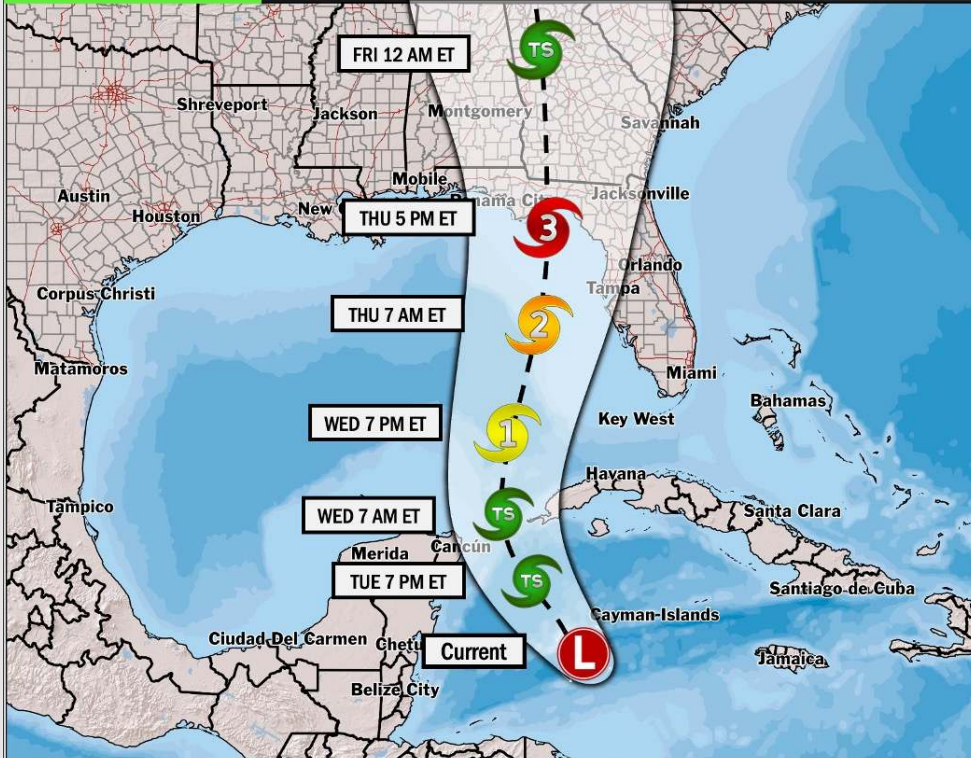
At this time, trends continue to suggest tropical storm/hurricane risks will remain well to the east of SE Texas. For these reasons, we have opted against a Victor Trigger.

Houston Pilots Tropical Update



Potential Hurricane Helene

TROPICAL INSIGHT 1:00 AM ET Tuesday, September 24, 2024 Forecaster: Walts/Kemper



Landfall Timing: Thursday (9/26) Evening

FORECAST NOTES:

- ✓ Storm has not yet formed. Favoring a slower timetable for intensification compared to previous update.
- ✓ No changes in timing as of 1AM-ET on Tuesday
- ✓ Florida Panhandle currently in biggest risk area for a MAJOR hurricane.

Houston Pilots Visibility Chart (miles)



Forecast Confidence



Visibility	Tue 2 am	Tue 3 am	Tue 4 am	Tue 5 am	Tue 6 am	Tue 7 am	Tue 8 am	Tue 9 am	Tue 10 am	Tue 11 am	Tue 12 pm	Tue 1 pm	Tue 2 pm	Tue 3 pm	Tue 4 pm	Tue 5 pm	Tue 6 pm	Tue 7 pm	Tue 8 pm	Tue 9 pm	Tue 10 pm	Tue 11 pm	Wed 12 am	Wed 1 am
Houston Pilots N - 610 Bridge	10	10	10	10	10	10	10	9	10	10	10	10	10	10	10	10	10	10	10	10	10	10	10	10
Houston Pilots M - Kinder 1	10	10	10	10	10	10	10	9	10	10	10	10	10	10	10	10	10	10	10	10	10	10	10	10
Houston Pilots L - Greens Bayou	10	10	10	10	10	10	10	9	10	10	10	10	10	10	10	10	10	10	10	10	10	10	10	10
Houston Pilots K - Shell Crude	10	10	10	10	10	10	10	9	10	10	10	10	10	10	10	10	10	10	10	10	10	10	10	10
Houston Pilots J - Lynchburg Ferries	10	10	10	10	10	10	10	9	10	10	10	10	10	10	10	10	10	10	10	10	10	10	10	10
Houston Pilots I - Exxon 3	10	10	10	10	10	10	10	7.9	10	10	10	10	10	10	10	10	10	10	10	10	10	10	10	10
Houston Pilots H - Morgans Point	10	10	10	10	10	10	10	7.9	10	10	10	10	10	10	10	10	10	10	10	10	10	10	10	10
Houston Pilots G - 75/76	10	10	10	10	10	10	10	7.9	10	10	10	10	10	10	10	10	10	10	10	10	10	10	10	9
Houston Pilots F - 63/64	10	10	10	10	10	10	10	10	10	10	10	10	10	10	10	10	10	10	10	10	10	10	10	9
Houston Pilots E - 51/52	10	10	10	10	10	10	10	10	10	10	10	10	10	10	10	10	10	10	10	10	10	10	10	10
Houston Pilots D - 37/38	10	10	10	10	10	10	10	10	10	10	10	10	10	10	10	10	10	10	10	10	10	10	10	10
Houston Pilots C - 25/26	10	10	10	10	10	10	10	10	10	10	10	10	10	10	10	10	10	10	10	10	10	10	10	10
Houston Pilots B - 11/12	10	10	10	10	10	10	10	10	10	10	10	10	10	10	10	10	10	10	10	10	10	10	10	10
Houston Pilots A - 1 & 2 Bravo	10	10	10	10	10	10	10	10	10	10	10	10	10	10	10	10	10	10	10	10	10	10	10	10

NOTE: This is automated data that may/may not agree with the official BAM thinking that's found on the daily slides or special visibility report slides. This data should be used as a guide only

Houston Pilots Wind Chart



Forecast Confidence

Above Normal Below Normal

Sustained wind 10 Knots

Gusts 15 Knots

Wind from the SE

Example

10

15

↙

Wind	Tue 2 am	Tue 3 am	Tue 4 am	Tue 5 am	Tue 6 am	Tue 7 am	Tue 8 am	Tue 9 am	Tue 10 am	Tue 11 am	Tue 12 pm	Tue 1 pm	Tue 2 pm	Tue 3 pm	Tue 4 pm	Tue 5 pm	Tue 6 pm	Tue 7 pm	Tue 8 pm	Tue 9 pm	Tue 10 pm	Tue 11 pm	Wed 12 am	Wed 1 am
Houston Pilots N - 610 Bridge	3 7 ↑	2 6 ↖	2 5 ↖	1 5 ↖	1 5 ↓	1 5 ↓	1 5 ↓	1 5 ↓	1 5 ↓	2 5 ←	3 6 ←	3 7 ←	3 8 ←	3 7 ←	3 8 ←	5 9 ↖	5 8 ↖	5 8 ←	5 8 ↑	3 7 ↖	3 6 ↖	2 5 ↖	2 5 ↑	1 5 ↑
Houston Pilots M - Kinder 1	3 7 ↑	2 6 ↖	2 5 ↖	1 5 ↖	1 5 ↓	1 5 ↓	1 5 ↓	1 5 ↓	1 5 ↓	2 5 ←	3 6 ←	3 7 ←	3 8 ←	3 7 ←	3 8 ←	5 9 ↖	5 8 ↖	3 8 ←	3 8 ↑	3 7 ↖	3 6 ↖	2 5 ↖	2 5 ↑	1 5 ↑
Houston Pilots L - Greens Bayou	3 6 ↑	2 5 ↖	2 5 ↖	1 5 ↖	1 5 ↓	1 5 ↓	1 5 ↓	1 5 ↓	1 5 ↓	2 6 ←	3 6 ←	3 7 ←	3 8 ←	3 7 ←	5 9 ↖	5 9 ↖	5 8 ↖	3 8 ←	3 8 ↑	3 7 ↖	2 6 ↖	2 5 ↖	1 5 ↑	1 5 ↖
Houston Pilots K - Shell Crude	3 6 ↑	2 5 ↖	2 5 ↖	1 5 ↖	1 5 ↓	1 5 ↓	1 5 ↓	1 5 ↓	2 5 ←	2 6 ←	3 6 ←	3 7 ←	3 8 ←	5 7 ←	5 8 ←	5 8 ↖	5 8 ↖	3 8 ←	3 7 ↑	3 7 ↖	2 6 ↖	2 5 ↖	1 5 ↑	1 5 ↖
Houston Pilots J - Lynchburg Ferries	2 6 ↑	2 5 ↖	1 5 ↖	1 5 ↖	1 5 ↓	1 5 ↓	1 5 ↓	1 5 ↓	1 5 ↓	2 6 ←	2 6 ←	3 7 ←	3 8 ←	3 7 ←	5 8 ↖	5 9 ↖	5 8 ↖	3 8 ←	3 7 ↑	3 7 ↖	2 6 ↖	1 5 ↖	1 5 ↑	1 5 ↖
Houston Pilots I - Exxon 3	6 8 ↑	6 7 ↑	5 7 ↑	3 6 ↖	3 6 ↓	3 6 ↓	3 6 ↓	3 6 ↓	3 6 ↓	3 6 ↓	3 7 ←	5 8 ←	6 9 ←	6 9 ←	7 10 ←	7 10 ←	7 10 ←	6 9 ←	6 9 ↑	6 7 ↖	5 7 ↖	5 7 ↑	3 6 ↑	3 6 ↑
Houston Pilots H - Morgans Point	6 9 ↑	6 8 ↑	5 7 ↑	3 6 ↖	3 6 ↓	3 6 ↓	3 6 ↓	3 6 ↓	3 6 ↓	3 7 ←	5 8 ←	6 9 ←	6 9 ←	6 10 ←	6 10 ←	7 10 ←	6 9 ←	6 9 ↑	6 8 ↑	6 7 ↖	5 7 ↖	5 7 ↑	3 6 ↑	3 6 ↑
Houston Pilots G - 75/76	8 10 ↑	7 9 ↑	6 8 ↑	6 8 ↑	5 7 ↑	5 7 ↖	5 7 ↖	5 7 ↖	5 7 ↖	5 7 ↖	3 8 ←	5 8 ←	6 9 ←	6 9 ←	6 10 ←	7 10 ←	6 10 ←	6 9 ←	6 9 ↑	6 8 ↑	6 7 ↖	6 7 ↑	5 7 ↑	5 6 ↑
Houston Pilots F - 63/64	8 10 ↑	7 9 ↑	6 8 ↑	6 8 ↑	5 7 ↑	5 7 ↖	5 7 ↖	5 7 ↖	5 7 ↖	5 7 ↖	3 8 ←	5 8 ←	6 9 ←	6 9 ←	6 10 ←	6 10 ←	6 10 ←	6 9 ←	6 9 ↑	6 8 ↑	6 7 ↖	6 7 ↑	5 7 ↑	5 6 ↑
Houston Pilots E - 51/52	8 12 ↑	7 10 ↑	6 9 ↑	6 8 ↑	5 7 ↑	3 6 ↖	3 6 ↖	3 6 ↖	3 6 ↖	5 7 ↖	5 7 ↖	5 7 ↖	5 7 ↖	6 9 ←	6 9 ←	6 9 ←	6 10 ←	6 9 ←	6 8 ↑	6 7 ↖	6 7 ↑	5 7 ↑	5 6 ↑	5 6 ↑
Houston Pilots D - 37/38	8 12 ↑	7 10 ↑	6 9 ↑	6 8 ↑	5 7 ↑	3 6 ↖	3 6 ↖	3 6 ↖	3 6 ↖	5 7 ↖	5 7 ↖	5 7 ↖	5 7 ↖	6 9 ←	6 9 ←	6 9 ←	6 9 ←	6 9 ←	6 8 ↑	6 7 ↖	6 7 ↑	5 7 ↑	5 6 ↑	5 6 ↑
Houston Pilots C - 25/26	8 12 ↑	7 10 ↑	6 9 ↑	6 8 ↑	5 7 ↑	3 6 ↖	3 6 ↖	3 6 ↖	3 6 ↖	5 7 ↖	5 7 ↖	5 7 ↖	5 7 ↖	6 9 ←	6 9 ←	6 9 ←	6 9 ←	6 8 ↑	6 7 ↖	6 7 ↑	5 7 ↑	5 6 ↑	5 6 ↑	3 6 ↑
Houston Pilots B - 11/12	7 12 ↑	6 10 ↑	6 9 ↑	5 8 ↑	3 7 ↑	3 6 ↖	3 6 ↖	3 6 ↖	3 6 ↖	5 7 ↖	5 7 ↖	5 7 ↖	6 9 ←	6 9 ←	6 9 ←	6 9 ←	6 9 ←	6 8 ↑	6 7 ↖	6 7 ↑	5 6 ↑	3 6 ↑	3 6 ↑	3 6 ↑
Houston Pilots A - 1 & 2 Bravo	8 13 ↑	8 12 ↑	7 10 ↑	6 9 ↑	6 8 ↑	5 7 ↑	3 6 ↖	3 6 ↖	3 6 ↖	5 7 ↖	5 8 ←	5 8 ←	5 8 ←	5 8 ←	6 9 ←	6 9 ←	6 9 ←	6 8 ↑	6 7 ↖	6 7 ↑	5 7 ↑	5 6 ↑	5 6 ↑	5 6 ↑

NOTE: This is automated data that may/may not agree with the official BAM thinking that's found on the daily slides. This data should be used as a guide only.

Houston Pilots: TUE. 9/24/2024



Forecast Discussion

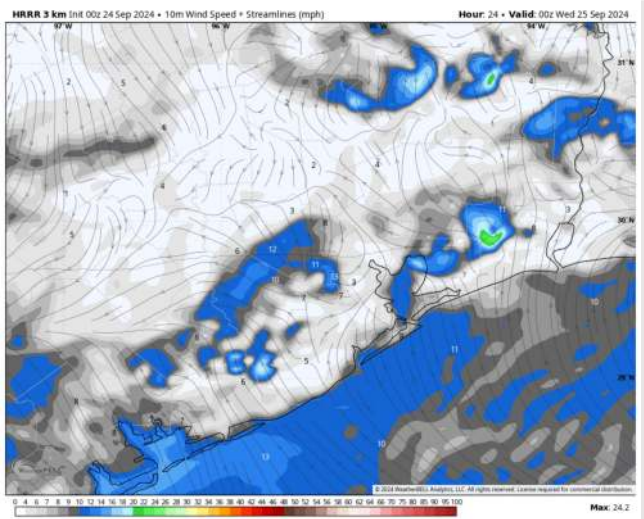
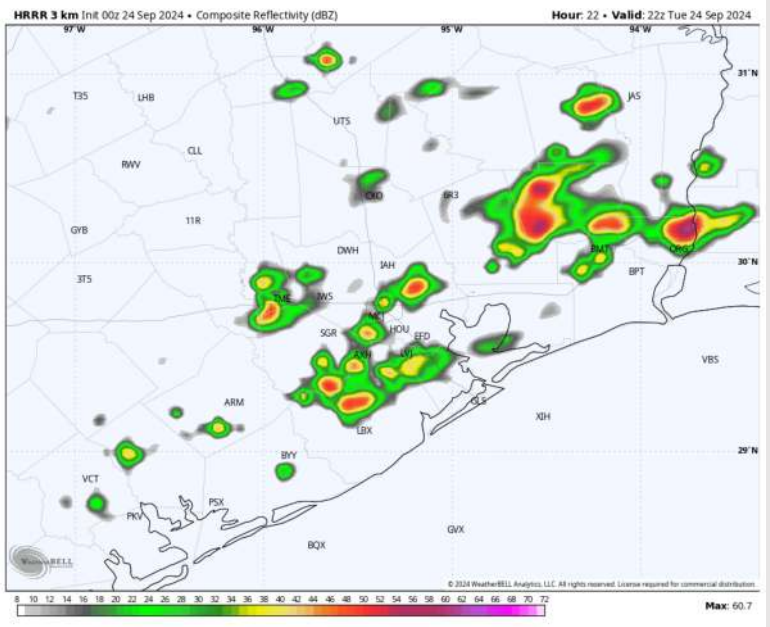
Precip: A few isolated showers will be possible for all stations from 9AM to 2PM. Scattered downpours and storms will then increase in coverage from 2PM to 9PM. **A few stronger gusts of up to 30 - 35kts can't be ruled out!**

Wind: Winds will be rather variable through 7PM, settling out of the SSE after that time. **N of Morgan's Point:** Winds will be sustained at 2 - 7 kts throughout today. **S of Morgan's Point:** Winds will be sustained at 4 - 10 kts through 7PM before slightly increasing to 8 - 12kts. Non-Thunderstorm wind gusts can reach 15-20 kts S of 11/12.

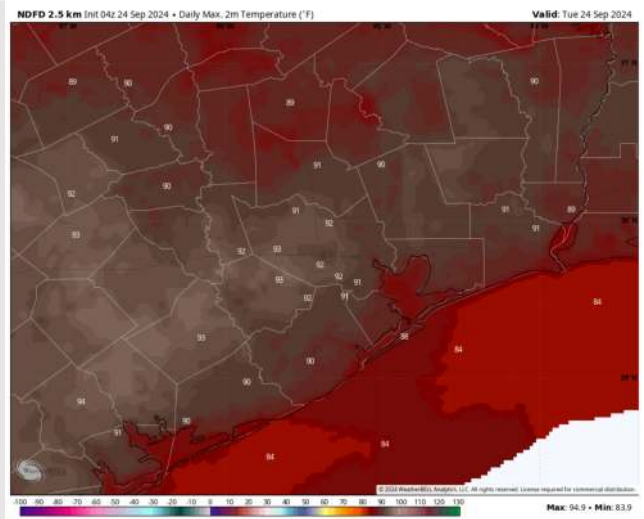
High Temps: **N of Morgan's Point:** Low 90s F. **S of Morgan's Point:** Mid to Upper 80s F

Visibility: Patchy fog risks will remain well to the W of all Stations.

Precip Image: 5 PM CT



Wind Speed:
7 PM CT



High Temps
Today

Houston Pilots: WED. 9/25/2024



Forecast Discussion

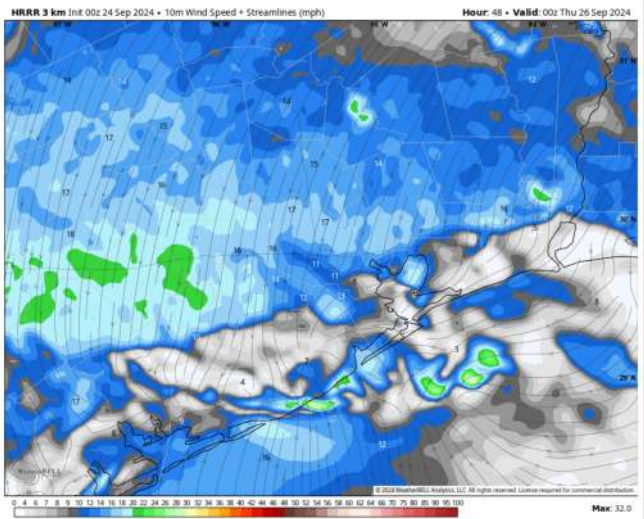
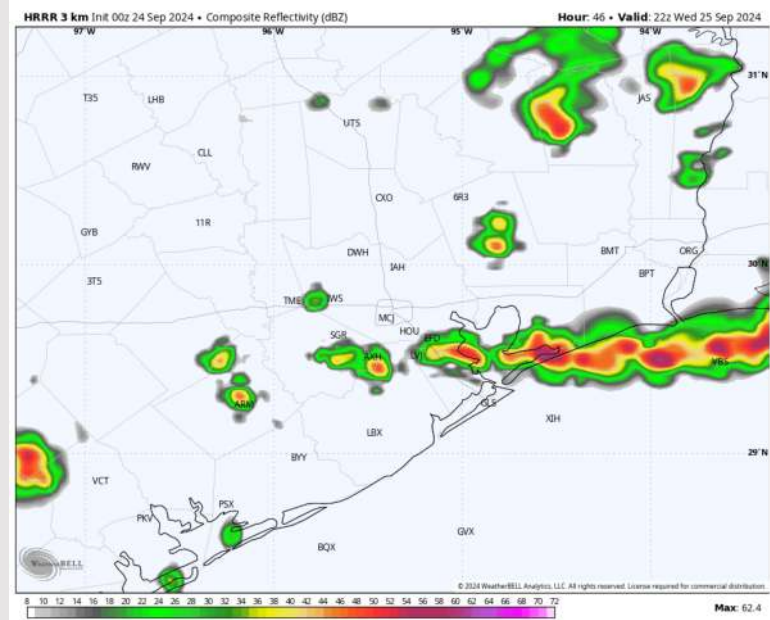
Precip: A few isolated showers (10%) can't be ruled out from 11AM – 3PM for stations N of Morgan's Point. From 3PM – 8PM, a broken line of downpours and storms is expected to impact all stations (70% chances). **Stronger gusts of up to 35kts can't be ruled out!**

Wind: Winds will be variable in direction through 8 PM, settling out of the NE throughout the rest of Wednesday evening. **N of Morgan's Point:** Winds at 3-8 kts through 8PM before increasing to 7 – 11 kts for the remainder of Wednesday evening. **S of Morgan's Point:** Winds will be 5-10 kts for all of Wednesday.

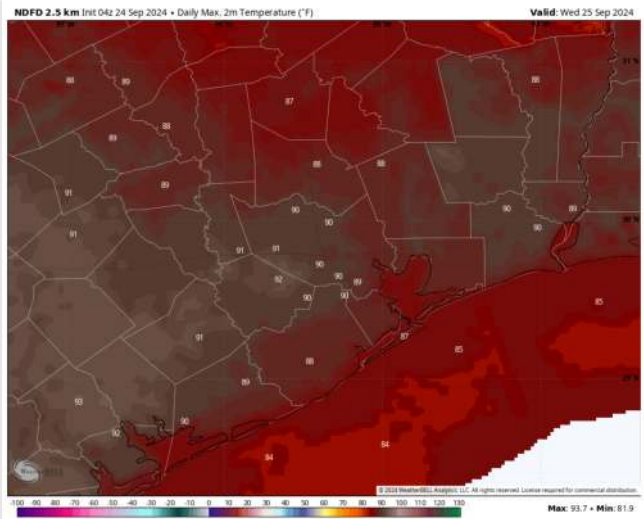
High Temps: **N of Morgan's Point:** Low 90s F. **S of Morgan's Point:** Mid 80s F.

Visibility: Not favoring any fog concerns for Wednesday.

Precip Image: 5 PM CT



Wind Speed
7 PM CT



High Temps
Wednesday

Houston Pilots: THU. 9/26/2024



Forecast Discussion

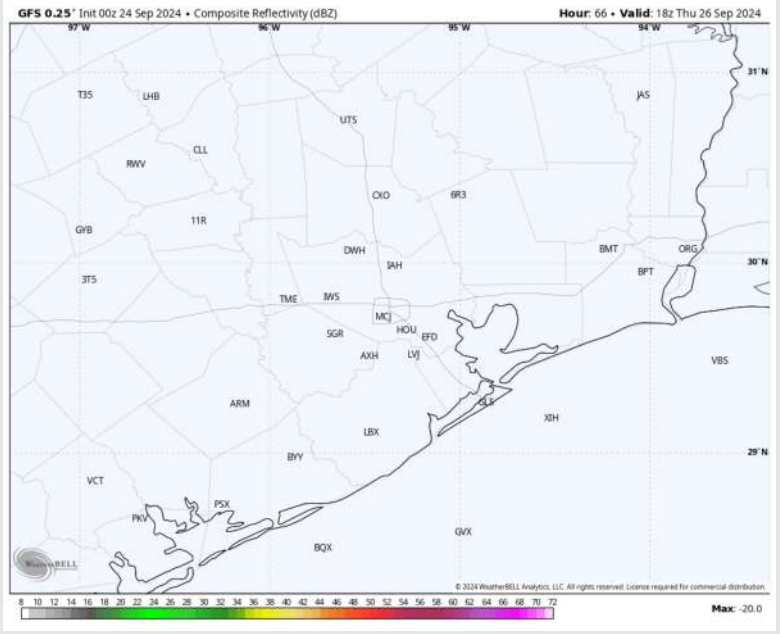
Precip: Favoring mostly dry conditions at this time for Thursday.

Wind: Winds will be generally out of the NE through Thursday. *We need to watch trends for higher sustained wind potential!* **N of Morgan's Point:** Winds will be at 7 - 14 kts for all of Thursday. **S of Morgan's Point:** Winds will be at 5 - 10 kts through 5 AM before increasing to 10 - 15 kts by 8AM, and then increasing to 15 - 20 kts by 11AM, continuing through the rest of the Thursday. **Gusts S of Morgan's point (best risk at Boarding Station) will reach 25 - 30kts after 9AM.**

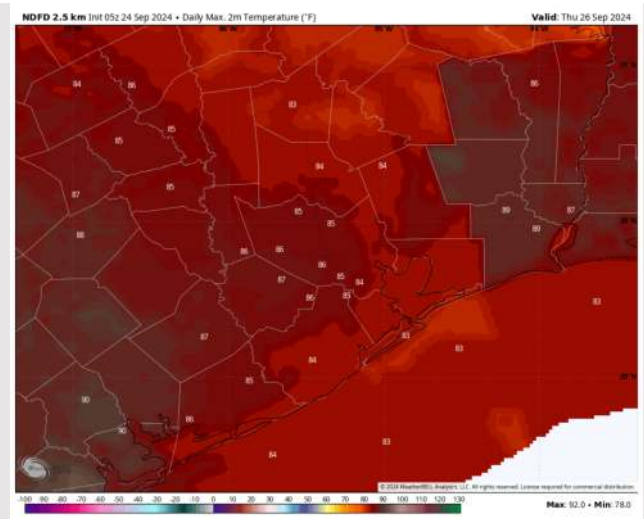
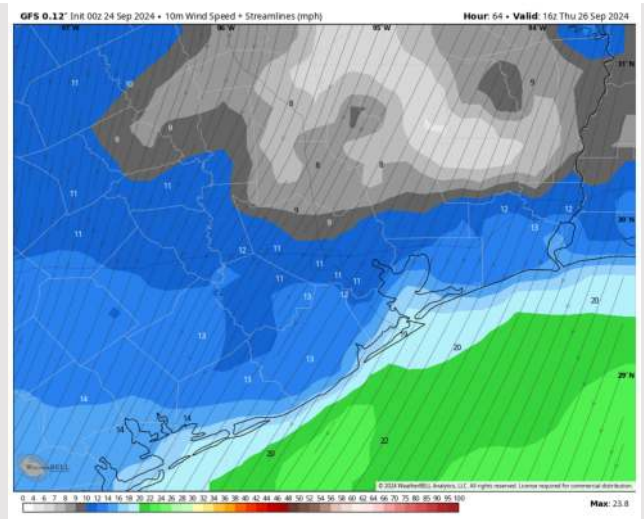
High Temps: **N of Morgan's Point:** Mid 80s F. **S of Morgan's Point:** Low 80s F.

Visibility: Not favoring any fog for Thursday.

Precip Image: 3 PM CT



Wind Speed:
11 AM CT

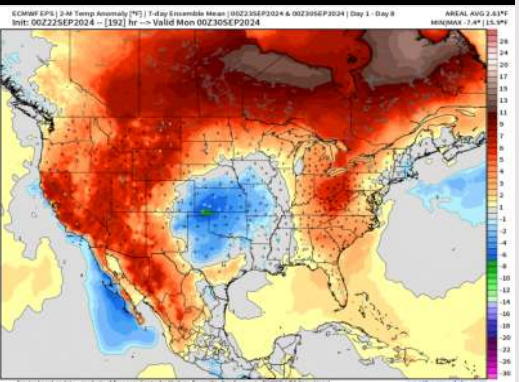


High Temps
Thursday

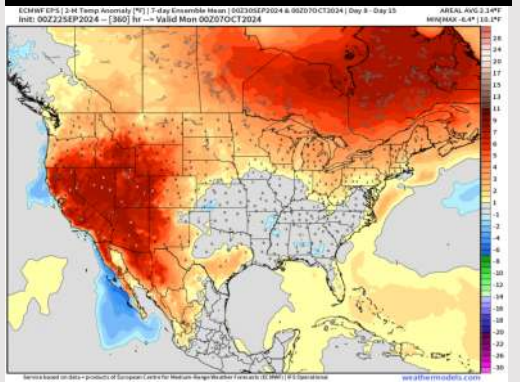
Houston Pilots: 9/24/24



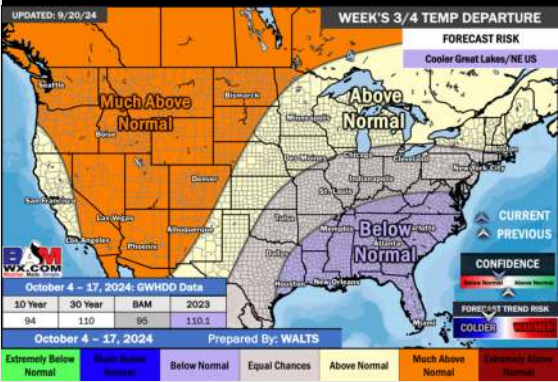
Next 7 Day Temperature Departure



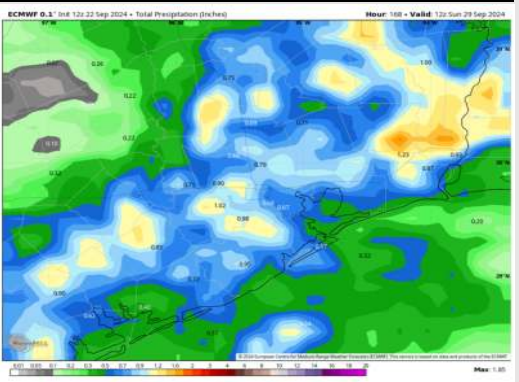
8-14 Day Temperature Departure



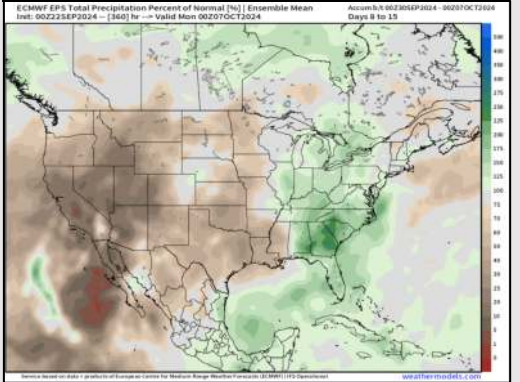
15-30 Day Temperature Departure



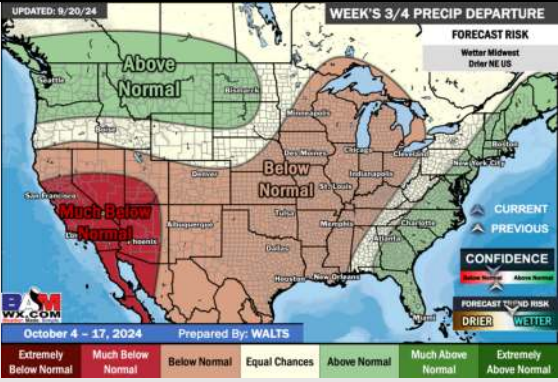
Next 7 Day Total Precipitation



8-14 Day % of Average Precip.



15-30 Day % of Average Precip.



- Temps are expected to be above normal for the week 1 timeframe. Favoring daily chances for precip to start week 1, with a drier back half of the week.
- Above normal temperatures are favored for week 2. Confidence is low on precip chances due to additional tropical risks for Week 2.
- Below normal temperatures and much below normal precipitation chances are expected for the weeks ¾ timeframe.