

Houston Pilots Forecast Package



Updated: 1:30 PM CT

Wednesday, September 4, 2024

Forecaster: Alyssa Elliott

Weather Headlines

- Frequent periods of downpours / storms in play throughout the week, with up to **~30 - 40 kt gusts possible embedded in storms this PM.**
- **Monitoring a tropical wave working through the Caribbean. Check tropical slides for more info.**
- **Not favoring any fog risks over the next few days.**



Current Radar: 1:00 PM CT



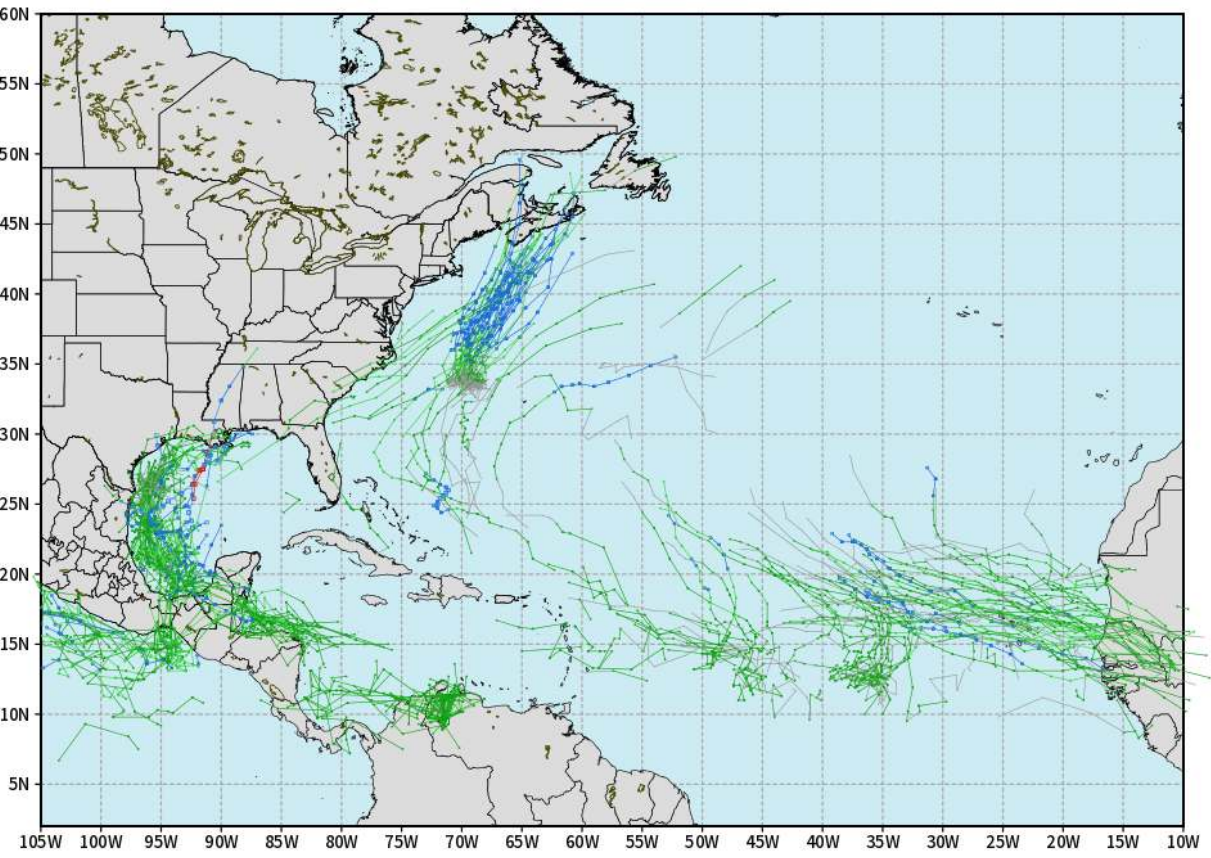
As always, please do not hesitate to reach out to us with any forecast questions via the chat option on Clarity or our on-call number, **(317)-560-8122** press **1** for forecast questions.

Houston Pilots Tropical Update

European Model Next 10 Days - Tropical Tracks

ECMWF ATLANTIC EPS Cyclone Locations --> Next [10-days]
INIT: 00Z04SEP2024 --> UNTIL 00Z14SEP2024

o-o ENSEMBLE MEAN
o-o 1000 - 1010 hPa
o-o 980 - 999 hPa
o-o 960 - 979 hPa
o-o 950 - 959 hPa
o-o < 950 hPa



weathermodels.com

Favoring a Tropical System to continue to work through the E Caribbean. Continued development looks possible as it crosses over the Yucatan Peninsula into the Gulf this weekend. We are keeping a close eye on this system for possible low-end impacts into Sunday – Tuesday (9/8 – 9/10), with additional risks for rain/storms and perhaps a higher gust or two.

See next slide for latest on timing.

Houston Pilots Tropical Update

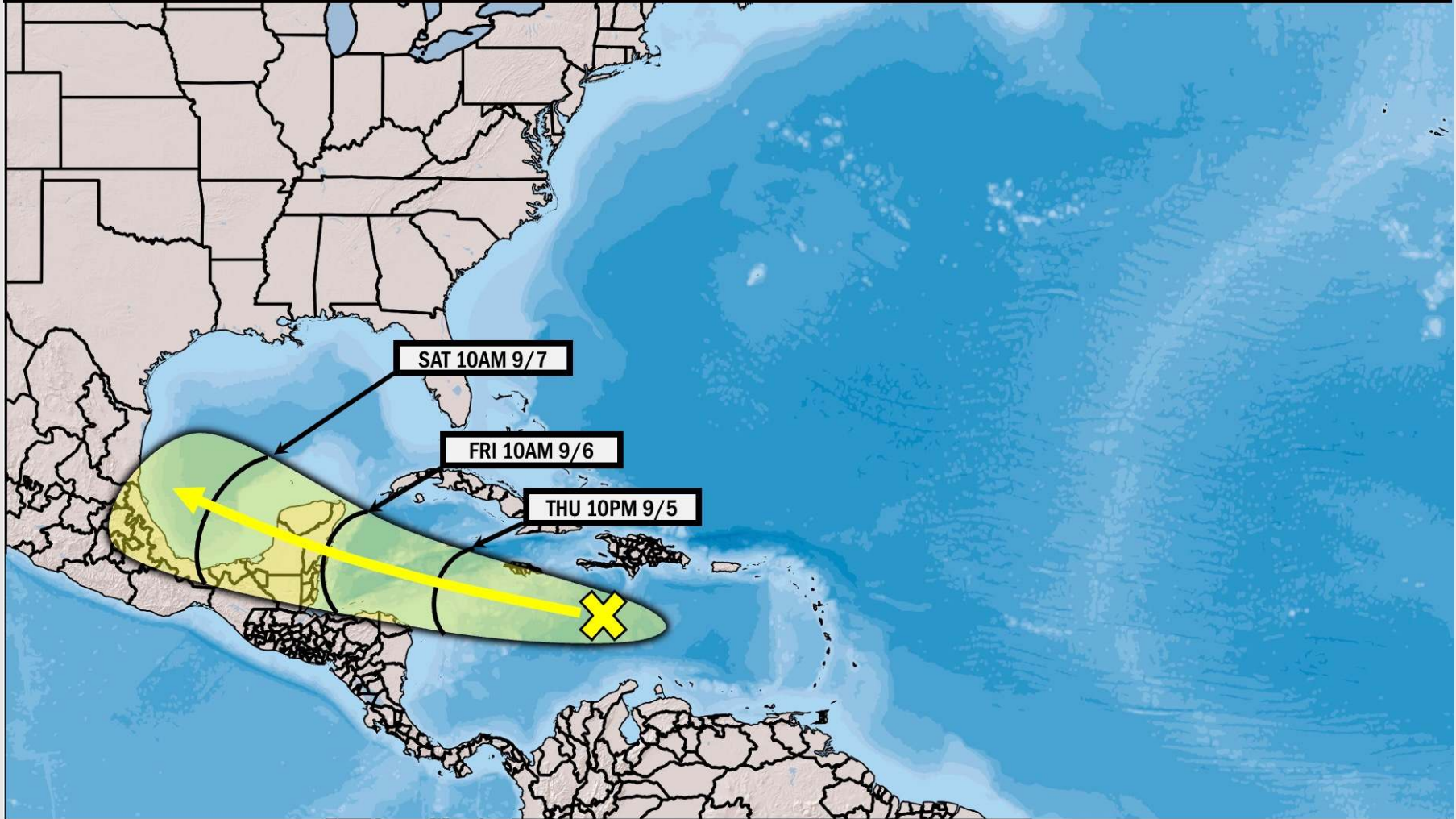


Tracking Tropical Wave

Sept 3rd - Sept 8th, 2024

FORECASTER: Kemper

UPDATED: 9/3/24 9:35 PM CT



Formation Chances	0 - 20%	20%-40%	40%-60%	60%-80%	80% - 100%
-------------------	---------	---------	---------	---------	------------

Houston Pilots Visibility Chart (miles)



Forecast Confidence



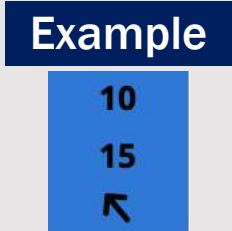
Visibility	Wed 3 pm	Wed 4 pm	Wed 5 pm	Wed 6 pm	Wed 7 pm	Wed 8 pm	Wed 9 pm	Wed 10 pm	Wed 11 pm	Thu 12 am	Thu 1 am	Thu 2 am	Thu 3 am	Thu 4 am	Thu 5 am	Thu 6 am	Thu 7 am	Thu 8 am	Thu 9 am	Thu 10 am	Thu 11 am	Thu 12 pm	Thu 1 pm	Thu 2 pm
Houston Pilots N - 610 Bridge	6.9	6.9	6.9	6.9	6.9	6.9	6.9	6.9	6.9	5.9	5.9	4.9	6.9	5.9	4.9	6.9	6.9	6.9	3.9	3.9	3.9	3.9	3.9	3.9
Houston Pilots M - Kinder 1	6.9	6.9	6.9	6.9	6.9	6.9	6.9	6.9	6.9	5.9	5.9	4.9	6.9	5.9	4.9	6.9	6.9	6.9	3.9	3.9	3.9	3.9	3.9	3.9
Houston Pilots L - Greens Bayou	6.9	6.9	6.9	6.9	6.9	6.9	6.9	6.9	6.9	5.9	5.9	4.9	6.9	5.9	4.9	6.9	6.9	6.9	3.9	3.9	3.9	3.9	3.9	3.9
Houston Pilots K - Shell Crude	6.9	6.9	6.9	6.9	6.9	6.9	6.9	6.9	6.9	5.9	5.9	4.9	6.9	5.9	4.9	6.9	6.9	6.9	3.9	3.9	3.9	3.9	3.9	3.9
Houston Pilots J - Lynchburg Ferries	6.9	6.9	6.9	6.9	7.9	6.9	6.9	6.9	6.9	6.9	6.9	6.9	6.9	6.9	5.9	6.9	6.9	6.9	4.9	3.9	3.9	3.9	3.9	3.9
Houston Pilots I - Exxon 3	6.9	6.9	6.9	6.9	7.9	6.9	6.9	6.9	6.9	5.9	5.9	6.9	6.9	5.9	4.9	6.9	6.9	6.9	4.9	3.9	3.9	3.9	3.9	3.9
Houston Pilots H - Morgans Point	6.9	6.9	6.9	6.9	7.9	6.9	6.9	6.9	6.9	6.9	5.9	5.9	6.9	5.9	4.9	6.9	6.9	6.9	4.9	3.9	3.9	3.9	3.9	3.9
Houston Pilots G - 75/76	6.9	7.9	7.9	7.9	7.9	6.9	6.9	6.9	6.9	6.9	6.9	5.9	6.9	5.9	5.9	6.9	9	7.9	4.9	3.9	3.9	3.9	9	8
Houston Pilots F - 63/64	7.9	7.9	7.9	9	10.1	7.9	6.9	6.9	6.9	6.9	6.9	6.9	6.9	5.9	5.9	7.9	9	9	4.9	3.9	3.9	3.9	9	8
Houston Pilots E - 51/52	10.1	10.1	9	10.1	10.1	10.1	10.1	7.9	6.9	6.9	6.9	6.9	6.9	6.9	6.9	9	10.1	10.1	4.9	3.9	3.9	3.9	9	8
Houston Pilots D - 37/38	10.1	10.1	10.1	10.1	10.1	10.1	10.1	7.9	6.9	6.9	6.9	6.9	6.9	6.9	6.9	10.1	10.1	10.1	4.9	4.9	3.9	4.9	9	9
Houston Pilots C - 25/26	10.1	10.1	10.1	10.1	10.1	10.1	10.1	9	6.9	6.9	6.9	6.9	6.9	6.9	6.9	10.1	10.1	10.1	4.9	4.9	4.9	4.9	8	8
Houston Pilots B - 11/12	10.1	10.1	10.1	10.1	10.1	10.1	10.1	10.1	6.9	6.9	6.9	6.9	6.9	6.9	6.9	10.1	10.1	10.1	5.9	4.9	4.9	4.9	7	8
Houston Pilots A - 1 & 2 Bravo	10.1	10.1	10.1	10.1	10.1	10.1	10.1	10.1	6.9	6.9	6.9	9	6.9	6.9	6.9	10.1	10.1	10.1	5.9	4.9	4.9	4.9	4	5

NOTE: This is automated data that may/may not agree with the official BAM thinking that's found on the daily slides or special visibility report slides. This data should be used as a guide only

Houston Pilots Wind Chart



Sustained wind 10 Knots
 Gusts 15 Knots
 Wind from the SE



Wind	Wed 3 pm	Wed 4 pm	Wed 5 pm	Wed 6 pm	Wed 7 pm	Wed 8 pm	Wed 9 pm	Wed 10 pm	Wed 11 pm	Thu 12 am	Thu 1 am	Thu 2 am	Thu 3 am	Thu 4 am	Thu 5 am	Thu 6 am	Thu 7 am	Thu 8 am	Thu 9 am	Thu 10 am	Thu 11 am	Thu 12 pm	Thu 1 pm	Thu 2 pm
Houston Pilots N - 610 Bridge	9 21 ←	9 21 ←	9 20 ←	9 20 ←	9 18 ←	8 17 ←	8 17 ←	8 17 ←	8 17 ←	9 18 ←	9 18 ←	9 18 ←	9 18 ←	9 18 ←	10 18 ←	10 18 ←	10 18 ←	10 18 ←	10 20 ←	10 20 ←	10 20 ←	10 21 ←	10 21 ←	10 21 ←
Houston Pilots M - Kinder 1	9 21 ←	9 21 ←	9 20 ←	9 20 ←	9 18 ←	8 17 ←	8 17 ←	8 17 ←	8 18 ←	9 18 ←	9 18 ←	9 18 ←	9 18 ←	9 18 ←	9 18 ←	10 18 ←	10 18 ←	10 18 ←	10 20 ←	10 20 ←	10 20 ←	10 21 ←	10 21 ←	10 21 ←
Houston Pilots L - Greens Bayou	9 20 ←	9 20 ←	9 20 ←	9 18 ←	9 18 ←	8 17 ←	8 17 ←	8 17 ←	8 18 ←	9 18 ←	9 18 ←	9 18 ←	9 20 ←	9 20 ←	9 20 ←	9 20 ←	9 20 ←	9 20 ←	10 20 ←	10 20 ←	10 20 ←	10 21 ←	10 21 ←	10 20 ←
Houston Pilots K - Shell Crude	9 20 ←	9 20 ←	9 20 ←	9 18 ←	8 18 ←	8 17 ←	8 17 ←	8 17 ←	8 18 ←	9 20 ←	9 20 ←	9 20 ←	9 20 ←	9 20 ←	9 20 ←	9 20 ←	10 20 ←	10 21 ←	10 21 ←	10 20 ←	10 20 ←	10 21 ←	10 21 ←	10 21 ←
Houston Pilots J - Lynchburg Ferries	9 20 ←	9 20 ←	9 18 ←	9 18 ←	8 18 ←	8 17 ←	8 17 ←	8 17 ←	8 18 ←	8 20 ←	8 20 ←	8 20 ←	8 20 ←	8 20 ←	8 20 ←	9 20 ←	9 20 ←	9 20 ←	10 21 ←	10 20 ←	10 20 ←	10 20 ←	10 20 ←	10 20 ←
Houston Pilots I - Exxon 3	13 21 ←	13 21 ←	13 20 ←	13 20 ←	13 20 ←	13 18 ←	13 18 ←	14 20 ←	15 22 ←	15 22 ←	16 22 ←	16 23 ←	16 23 ←	17 23 ←	17 23 ←	17 23 ←	16 23 ←	16 22 ←	15 22 ←	15 22 ←	14 21 ←	14 21 ←	13 21 ←	13 21 ←
Houston Pilots H - Morgans Point	13 21 ←	13 21 ←	13 20 ←	13 20 ←	13 20 ←	13 18 ←	13 18 ←	14 21 ←	15 22 ←	15 22 ←	16 23 ←	16 23 ←	16 23 ←	17 23 ←	17 23 ←	17 23 ←	16 23 ←	16 23 ←	15 22 ←	15 22 ←	15 22 ←	14 21 ←	14 21 ←	14 21 ←
Houston Pilots G - 75/76	13 22 ←	13 22 ←	13 21 ←	13 21 ←	13 21 ←	13 21 ←	15 21 ←	15 22 ←	16 24 ←	17 24 ←	17 24 ←	17 24 ←	17 24 ←	17 24 ←	17 24 ←	17 24 ←	17 24 ←	17 24 ←	16 24 ←	16 24 ←	15 24 ←	15 23 ←	15 23 ←	15 22 ←
Houston Pilots F - 63/64	13 22 ←	13 22 ←	13 21 ←	13 21 ←	13 21 ←	13 21 ←	14 21 ←	15 23 ←	16 24 ←	17 24 ←	17 24 ←	17 24 ←	17 24 ←	17 24 ←	17 24 ←	17 24 ←	17 24 ←	17 24 ←	17 24 ←	16 24 ←	16 24 ←	15 24 ←	15 23 ←	15 23 ←
Houston Pilots E - 51/52	14 22 ←	14 22 ←	14 22 ←	14 22 ←	14 22 ←	14 21 ←	15 22 ←	15 23 ←	16 24 ←	17 24 ←	17 24 ←	17 24 ←	17 24 ←	17 24 ←	17 24 ←	17 24 ←	17 24 ←	17 24 ←	17 24 ←	16 24 ←	16 24 ←	15 24 ←	15 23 ←	15 23 ←
Houston Pilots D - 37/38	14 22 ←	14 22 ←	14 22 ←	14 22 ←	14 22 ←	14 22 ←	15 22 ←	16 23 ←	16 24 ←	17 24 ←	17 24 ←	16 24 ←	16 24 ←	16 24 ←	16 24 ←	16 24 ←	16 24 ←	16 24 ←	16 24 ←	16 24 ←	15 24 ←	15 23 ←	15 23 ←	15 22 ←
Houston Pilots C - 25/26	14 22 ←	14 22 ←	14 22 ←	14 22 ←	14 22 ←	14 22 ←	15 22 ←	15 23 ←	16 24 ←	16 24 ←	15 23 ←	15 23 ←	15 23 ←	15 23 ←	15 23 ←	15 23 ←	15 23 ←	15 23 ←	15 23 ←	15 23 ←	15 23 ←	15 23 ←	15 23 ←	15 21 ←
Houston Pilots B - 11/12	14 22 ←	14 22 ←	14 22 ←	14 22 ←	14 22 ←	13 22 ←	13 22 ←	13 23 ←	14 23 ←	14 23 ←	14 23 ←	13 23 ←	13 23 ←	13 22 ←	13 22 ←	13 22 ←	14 22 ←	14 22 ←	13 22 ←	14 22 ←	14 23 ←	14 23 ←	14 22 ←	14 21 ←
Houston Pilots A - 1 & 2 Bravo	15 24 ←	15 23 ←	15 24 ←	15 23 ←	15 23 ←	15 23 ←	16 24 ←	16 24 ←	17 24 ←	17 24 ←	17 24 ←	17 24 ←	17 24 ←	16 24 ←	16 23 ←	16 23 ←	16 23 ←	16 23 ←	15 23 ←	16 23 ←	16 23 ←	15 23 ←	15 24 ←	15 22 ←

NOTE: This is automated data that may/may not agree with the official BAM thinking that's found on the daily slides.
 This data should be used as a guide only.

Houston Pilots: WED. 9/4/2024



Forecast Discussion

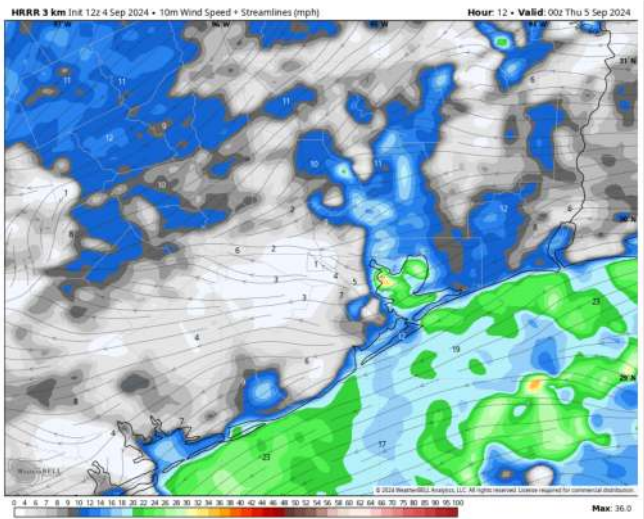
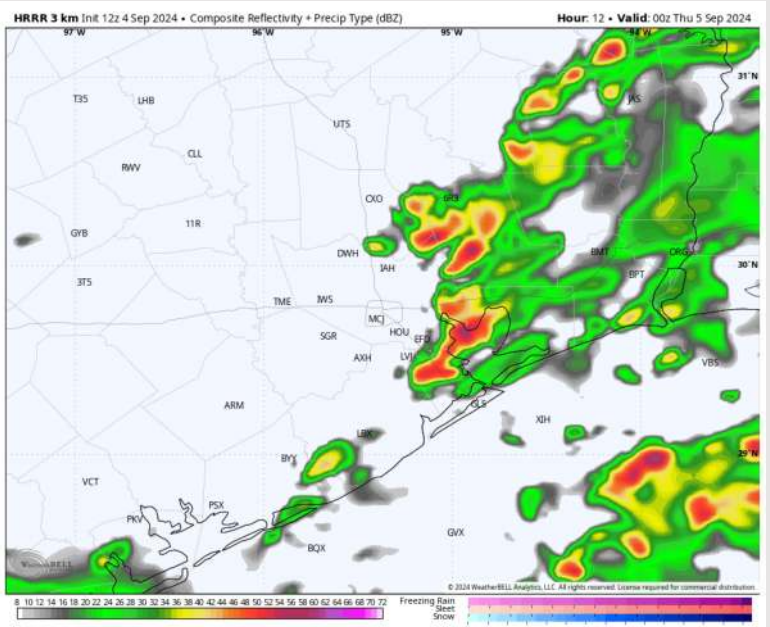
Precip: Favoring scattered to widespread (40-50%) showers and storms in play for all Stations through the remainder of the day. **Stronger storms will offer up potential for wind gusts near 30-40 kts.**

Wind: Winds will be generally out of the E/NE throughout the PM. **N of Morgan's Point:** Winds at 5 - 10 kts through 10AM before increasing to 8 - 13kts for the remainder the day. **S of Morgan's Point:** Winds will be at 19 - 23 kts throughout the day. **Non-thunderstorm wind gusts of 30 kts can be possible for stations S of 37/38.**

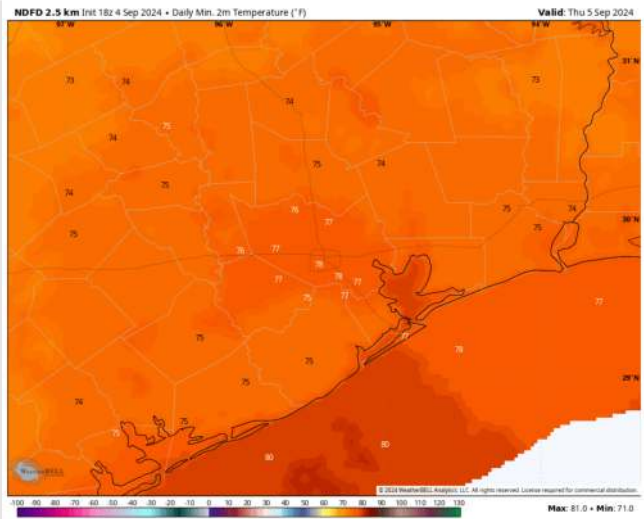
Low Temps: **N of Morgan's Point:** Upper 70s F. **S of Morgan's Point:** Near to low 80s F.

Visibility: Not anticipating any fog concerns for this PM, however, reduced visibilities will be possible in heavy downpours.

Precip Image: 7 PM CT



Wind Speed
7 PM CT



Low Temps
THU AM

Houston Pilots: THU. 9/5/2024



Forecast Discussion

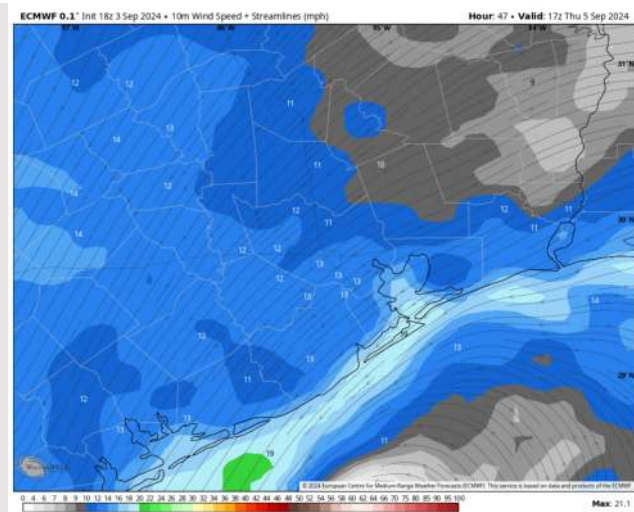
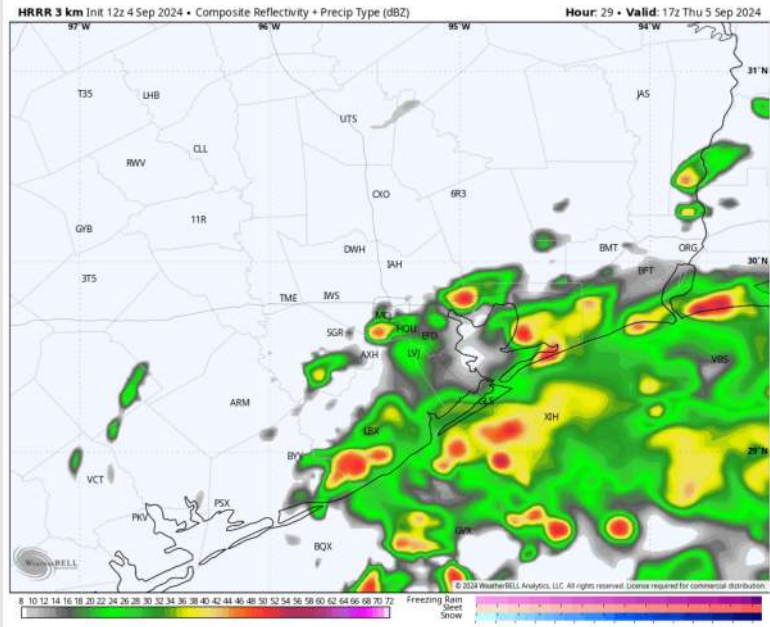
Precip: Scattered to widespread showers and storms can be expected across all stations throughout the day. Coverage will be the greatest and most frequent for stations S of Morgan's Point.

Wind: Sustained winds will be out of the NE throughout the day. **N of Morgan's Point:** Winds will be at 5 – 10 kts for the day. **S of Morgan's Point:** Winds will be at 13 -18 kts with occasional gusts near 20-23 kts at the Boarding Station.

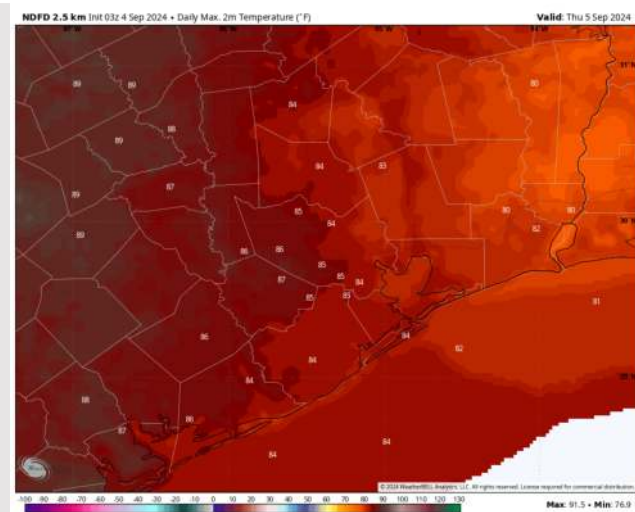
High Temps: **N of Morgan's Point:** Upper 80s F. **S of Morgan's Point:** Low 80s F.

Visibility: Not anticipating any visibility concerns Thursday.

Precip Image: 12 PM CT



Wind Speed:
12 PM CT



High Temps
Thursday

Forecast Discussion

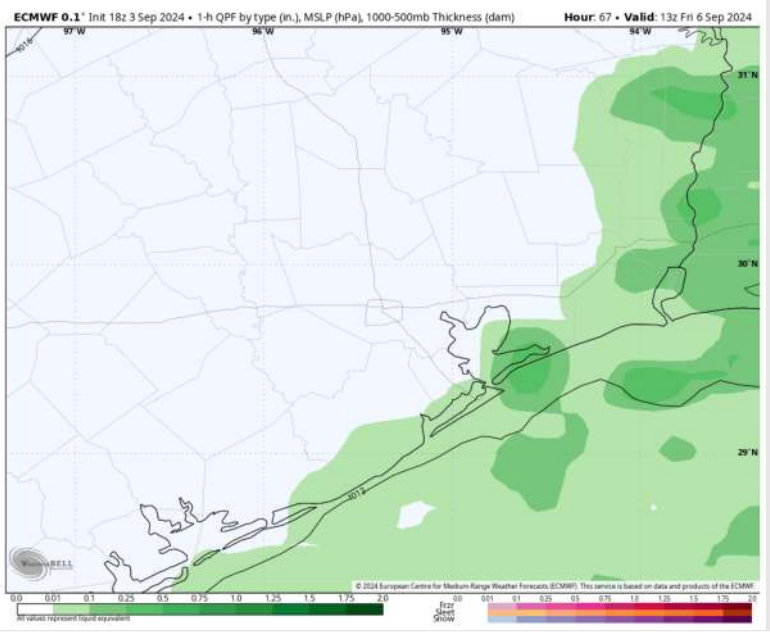
Precip: Persistent chances of rain in play as system continues to sit along the southeast Texas coast. More widespread to start the morning, with chances becoming more scattered by ~ 7PM.

Wind: Winds will be out of the NE throughout the day. **N of Morgan's Point:** Winds will be sustained 7 - 12 kts throughout the rest of the day. **S of Morgan's Point:** Winds will be sustained at 12 - 17 kts, with gusts of 18-20 kts possible for stations S of Morgan's Point.

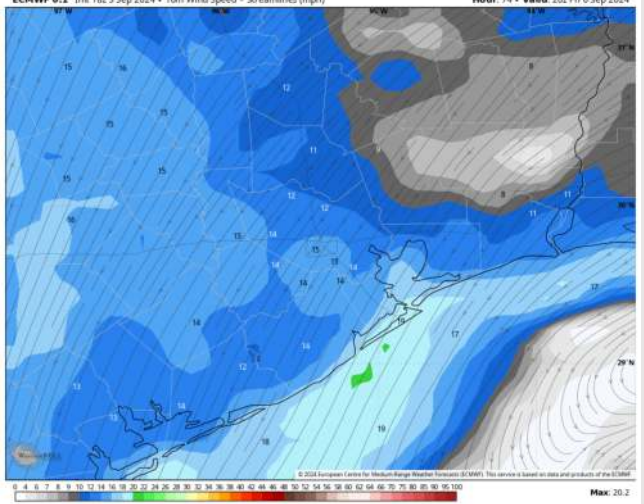
High Temps: N of Morgan's Point: Mid 80s F. S of Morgan's Point: Low 80s F.

Visibility: Not anticipating any fog concerns for Friday.

Precip Image: 8 AM CT

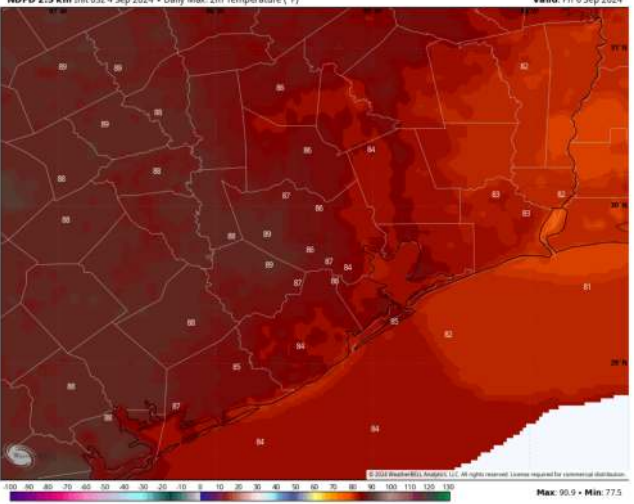


ECMWF 0.1' Init 18z 3 Sep 2024 • 10m Wind Speed • Streamlines (mph) Hour: 74 • Valid: 20z Fri 6 Sep 2024



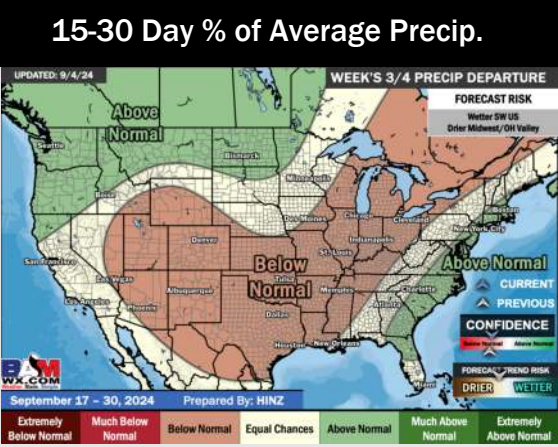
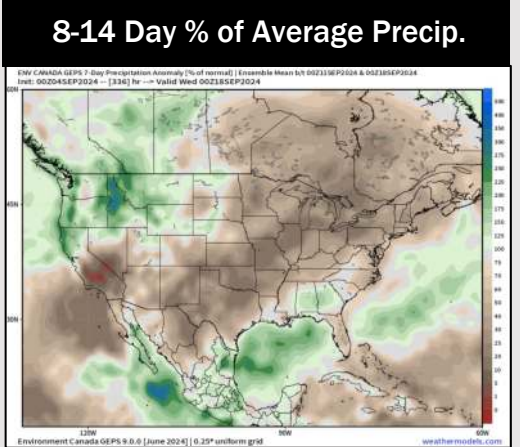
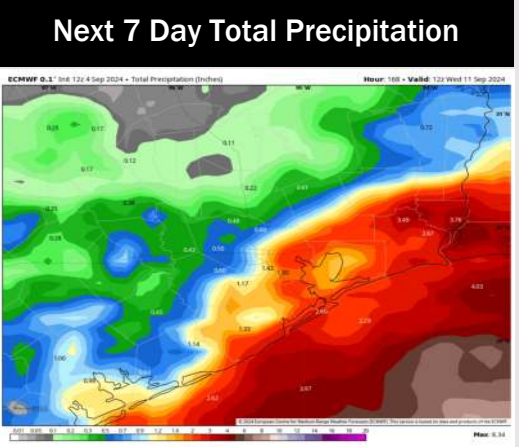
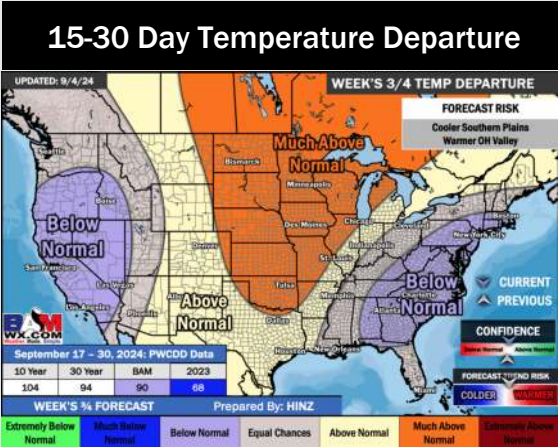
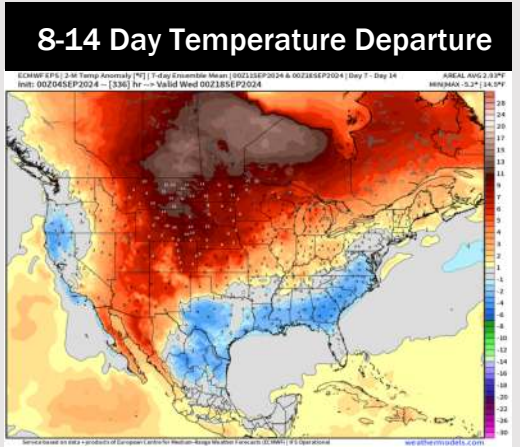
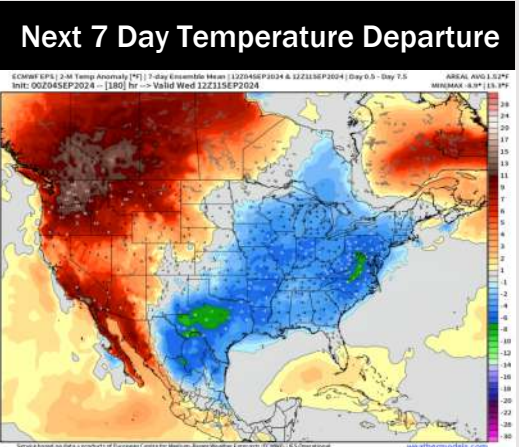
Wind Speed:
3 PM CT

NDFD 2.5 km Init 03z 4 Sep 2024 • Daily Max. 2m Temperature (°F) Valid: Fri 6 Sep 2024



High Temps
Friday

Houston Pilots: 9/4/24



- Temps are expected to be below normal for the week 1 timeframe. Scattered to widespread rain chances are expected daily through the rest of this week and into the weekend.
- Below normal temperatures are favored for week 2 with near to just below normal rain chances. Tropical activity threats for late Week 1 / early Week 2 and beyond will continue to be monitored
- Above normal temperatures and seasonable precipitation chances are expected for the weeks 3/4 timeframe.