

Houston Pilots Forecast Package



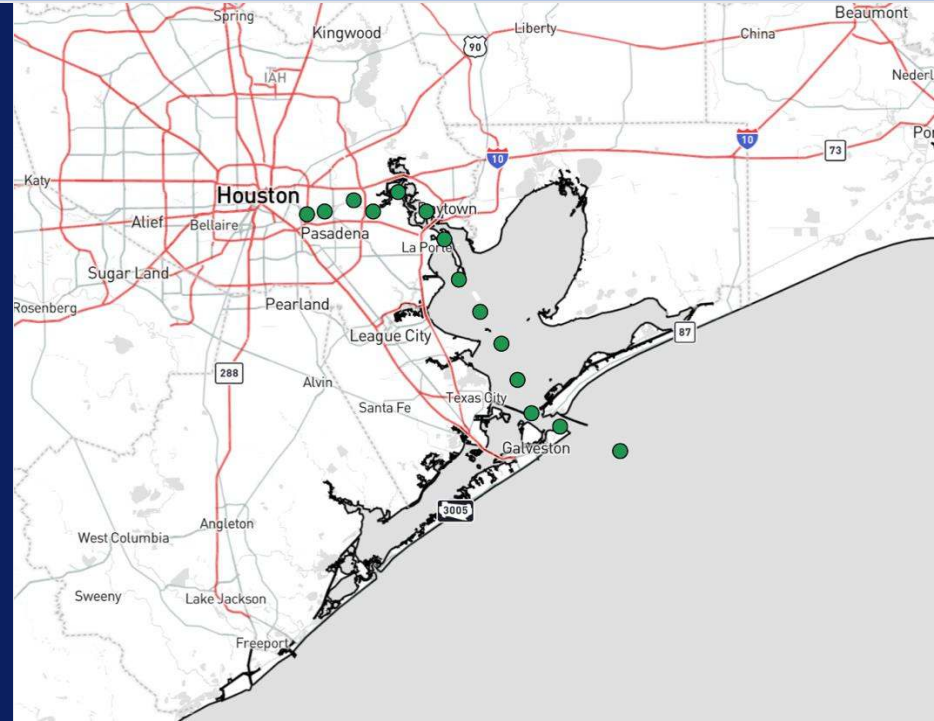
Updated: 1:00 PM CT

Saturday, September 21, 2024

Forecaster: Jonathan Kipper

Weather Headlines

- Favoring mostly dry conditions into early next week with only isolated light showers SUN/MON.
- Low end risk for patchy fog Sunday morning
- Tropical development favored in Caribbean early next week. See latest updates below for more.



Current Radar: 12:55 PM CT

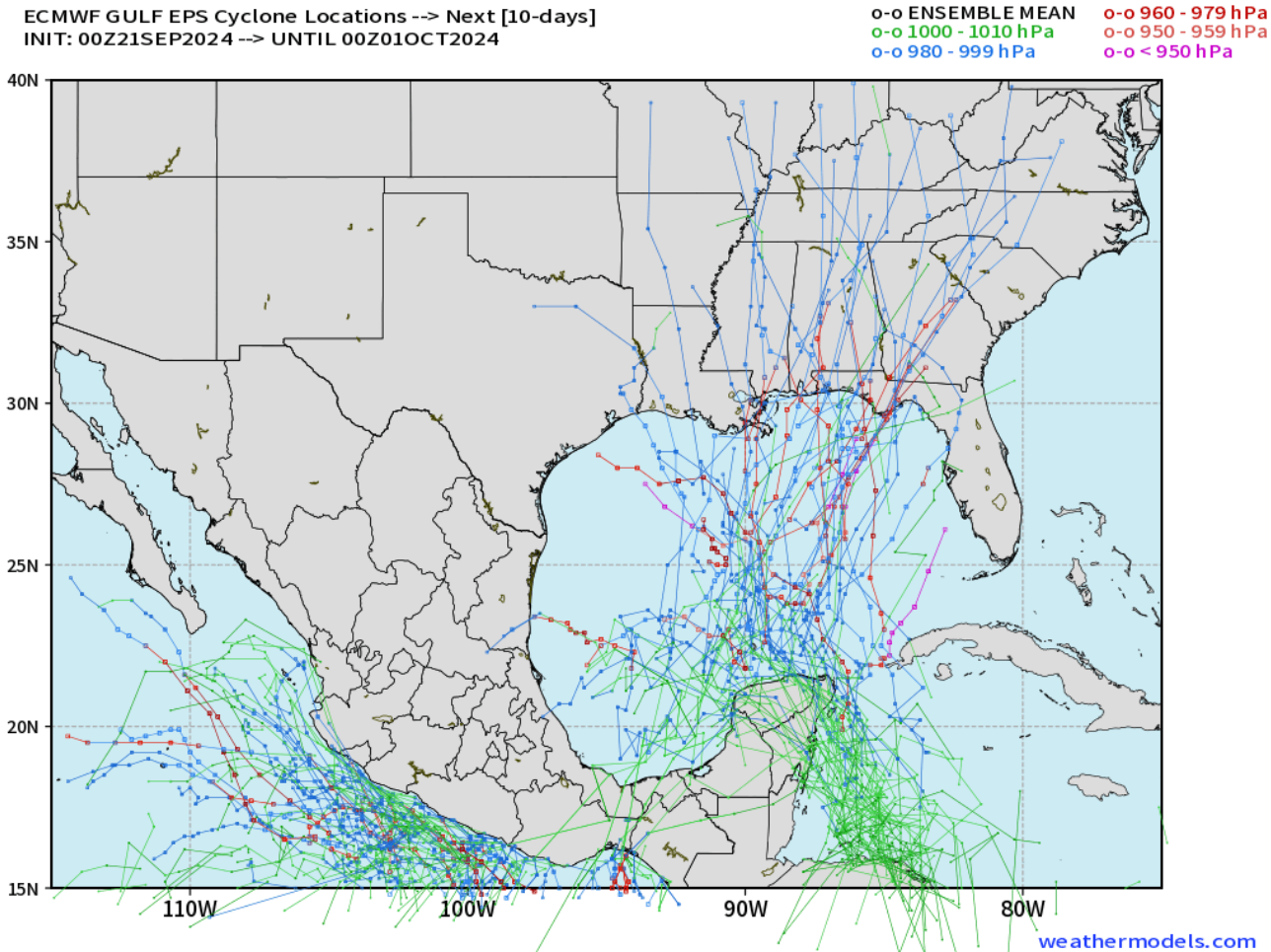


As always, please do not hesitate to reach out to us with any forecast questions via the chat option on Clarity or our on-call number, **(317)-560-8122** press 1 for forecast questions.

Houston Pilots Tropical Update



European Model Next 10 Days - Tropical Tracks



Additional tropical development is favored in the Caribbean late this weekend and into next week. At this time, trends continue to suggest any tropical storm/hurricane that forms within the next 7-10 days should stay east of SE Texas.

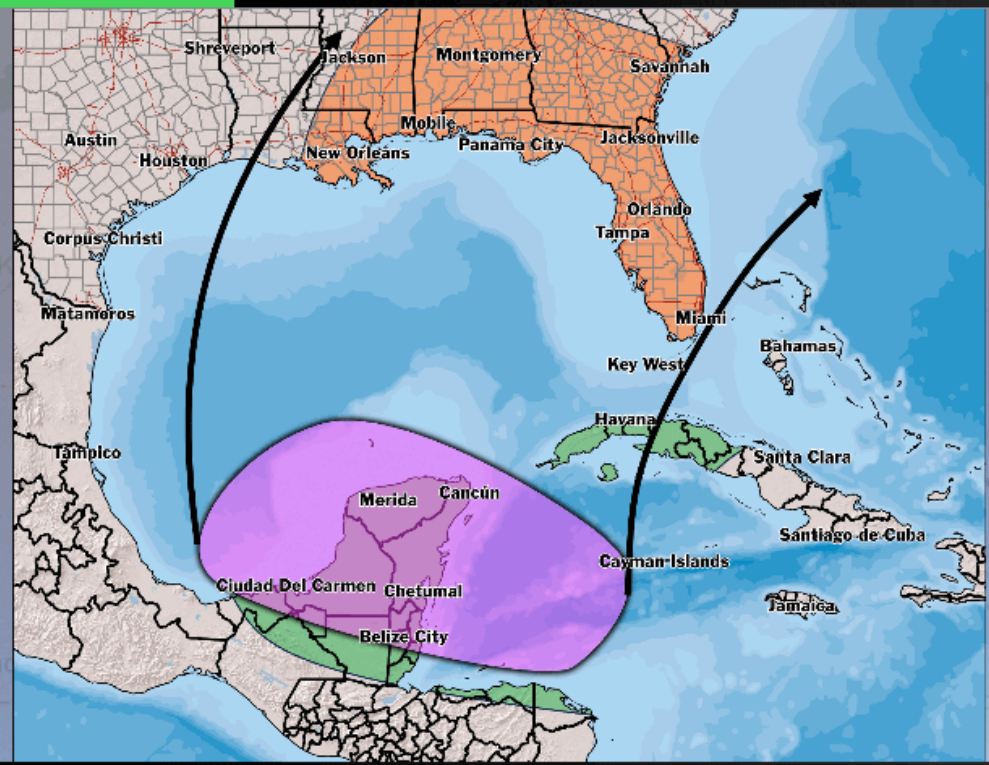
Confidence is low overall. Additional updates to follow.

Houston Pilots Tropical Update



Potential Tropical Formation

TROPICAL INSIGHT 7:50 PM ET Friday, September 20, 2024 Forecaster: Lowry



TIMING: September 24th – October 1st

FORECAST NOTES:

- ✓ An area (Purple) in the W Caribbean and W Gulf is marked for potential tropical development this weekend.
- ✓ Exact track remains uncertain however current progression is favored for E Gulf
- ✓ Areas in Orange should be ready / monitor potential into next week. Areas in Green likely at a heavy rainfall risk regardless of development.

Houston Pilots Visibility Chart (miles)



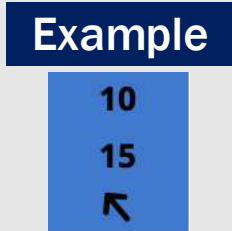
Forecast Confidence



Visibility	Sat 2 pm	Sat 3 pm	Sat 4 pm	Sat 5 pm	Sat 6 pm	Sat 7 pm	Sat 8 pm	Sat 9 pm	Sat 10 pm	Sat 11 pm	Sun 12 am	Sun 1 am	Sun 2 am	Sun 3 am	Sun 4 am	Sun 5 am	Sun 6 am	Sun 7 am	Sun 8 am	Sun 9 am	Sun 10 am	Sun 11 am	Sun 12 pm	Sun 1 pm
Houston Pilots N - 610 Bridge	10	10	10	10	10	10	10	10	10	10	10	10	10	10	10	10	10	10	7.9	6.9	10	10	10	10
Houston Pilots M - Kinder 1	10	10	10	10	10	10	10	10	10	10	10	10	10	10	10	10	10	10	7.9	6.9	10	10	10	10
Houston Pilots L - Greens Bayou	10	10	10	10	10	10	10	10	10	10	10	10	10	10	10	10	10	10	7.9	6.9	10	10	10	10
Houston Pilots K - Shell Crude	10	10	10	10	10	10	10	10	10	10	10	10	10	10	10	10	10	10	7.9	6.9	10	10	10	10
Houston Pilots J - Lynchburg Ferries	10	10	10	10	10	10	10	10	10	10	10	10	10	10	10	10	10	10	7.9	6.9	10	10	10	10
Houston Pilots I - Exxon 3	10	10	10	10	10	10	10	10	10	10	10	10	10	10	10	10	10	10	7.9	6.9	10	10	10	10
Houston Pilots H - Morgans Point	10	10	10	10	10	10	10	10	10	10	10	10	10	10	10	10	10	10	10	7.9	10	10	10	10
Houston Pilots G - 75/76	10	10	10	10	10	10	10	10	10	10	10	10	10	10	10	10	10	10	10	10	10	10	10	10
Houston Pilots F - 63/64	10	10	10	10	10	10	10	10	10	10	10	10	10	10	10	10	10	10	10	10	10	10	10	10
Houston Pilots E - 51/52	10	10	10	10	10	10	10	10	10	10	10	10	10	10	10	10	10	10	10	10	10	10	10	10
Houston Pilots D - 37/38	10	10	10	10	10	10	10	10	10	10	10	10	10	10	10	10	10	10	10	10	10	10	10	10
Houston Pilots C - 25/26	10	10	10	10	10	10	10	10	10	10	10	10	10	10	10	10	10	10	10	10	10	10	10	10
Houston Pilots B - 11/12	10	10	10	10	10	10	10	10	10	10	10	10	10	10	10	10	10	10	10	10	10	10	10	10
Houston Pilots A - 1 & 2 Bravo	10	10	10	10	10	10	10	10	10	10	10	10	10	10	10	10	10	10	10	10	10	10	10	10

NOTE: This is automated data that may/may not agree with the official BAM thinking that's found on the daily slides or special visibility report slides. This data should be used as a guide only

Houston Pilots Wind Chart



Wind	Sat 2 pm	Sat 3 pm	Sat 4 pm	Sat 5 pm	Sat 6 pm	Sat 7 pm	Sat 8 pm	Sat 9 pm	Sat 10 pm	Sat 11 pm	Sun 12 am	Sun 1 am	Sun 2 am	Sun 3 am	Sun 4 am	Sun 5 am	Sun 6 am	Sun 7 am	Sun 8 am	Sun 9 am	Sun 10 am	Sun 11 am	Sun 12 pm	Sun 1 pm
Houston Pilots N - 610 Bridge	8 14 ↙	8 16 ↙	8 17 ↙	9 17 ↙	9 17 ↙	9 17 ↙	9 16 ↙	8 15 ↙	7 14 ↙	6 12 ↙	6 10 ↙	5 10 ↙	5 9 ↙	3 8 ↙	3 7 ↙	3 7 ↙	3 7 ↙	3 7 ↙	3 6 ↙	3 7 ↙	3 8 ↙	3 9 ↙	6 10 ↙	6 12 ↙
Houston Pilots M - Kinder 1	8 15 ↙	8 16 ↙	8 17 ↙	9 17 ↙	9 17 ↙	9 17 ↙	8 16 ↙	8 15 ↙	7 14 ↙	6 12 ↙	6 10 ↙	5 9 ↙	5 9 ↙	3 8 ↙	3 7 ↙	3 7 ↙	3 6 ↙	3 6 ↙	3 7 ↙	3 7 ↙	3 8 ↙	5 9 ↙	6 10 ↙	6 13 ↙
Houston Pilots L - Greens Bayou	8 14 ↙	8 16 ↙	8 17 ↙	9 17 ↙	9 17 ↙	9 17 ↙	8 16 ↙	8 15 ↙	6 14 ↙	6 12 ↙	5 10 ↙	5 9 ↙	3 9 ↙	3 8 ↙	3 7 ↙	3 7 ↙	3 6 ↙	3 6 ↙	3 7 ↙	3 7 ↙	3 8 ↙	3 9 ↙	6 10 ↙	6 13 ↙
Houston Pilots K - Shell Crude	8 14 ↙	8 16 ↙	8 17 ↙	9 16 ↙	9 17 ↙	8 16 ↙	8 15 ↙	7 14 ↙	6 12 ↙	6 10 ↙	5 9 ↙	5 9 ↙	5 9 ↙	3 8 ↙	3 7 ↙	3 7 ↙	3 6 ↙	3 6 ↙	3 7 ↙	3 7 ↙	3 8 ↙	5 9 ↙	6 10 ↙	6 13 ↙
Houston Pilots J - Lynchburg Ferries	7 14 ↙	8 15 ↙	8 16 ↙	9 16 ↙	9 16 ↙	8 16 ↙	8 16 ↙	7 15 ↙	6 13 ↙	6 12 ↙	5 10 ↙	3 9 ↙	3 9 ↙	3 8 ↙	3 7 ↙	3 6 ↙	2 6 ↙	2 6 ↙	2 6 ↙	3 7 ↙	3 8 ↙	3 9 ↙	5 10 ↙	6 12 ↙
Houston Pilots I - Exxon 3	10 16 ↙	10 17 ↙	12 17 ↙	13 18 ↙	13 18 ↙	13 17 ↙	12 16 ↙	10 15 ↙	10 14 ↙	10 14 ↙	9 14 ↙	9 13 ↙	8 13 ↙	8 12 ↙	8 10 ↙	7 10 ↙	6 9 ↙	6 8 ↙	6 8 ↙	6 8 ↙	6 9 ↙	6 10 ↙	7 12 ↙	8 14 ↙
Houston Pilots H - Morgans Point	10 15 ↙	10 17 ↙	12 17 ↙	12 17 ↙	12 17 ↙	12 17 ↙	12 16 ↙	10 15 ↙	10 14 ↙	10 14 ↙	9 14 ↙	9 14 ↙	9 13 ↙	8 12 ↙	8 12 ↙	7 10 ↙	6 9 ↙	6 8 ↙	6 8 ↙	6 8 ↙	6 9 ↙	6 10 ↙	7 12 ↙	8 14 ↙
Houston Pilots G - 75/76	9 15 ↙	10 17 ↙	10 17 ↙	12 17 ↙	12 18 ↙	13 17 ↙	12 17 ↙	12 16 ↙	12 15 ↙	10 15 ↙	10 15 ↙	10 15 ↙	10 15 ↙	10 14 ↙	10 14 ↙	9 14 ↙	8 12 ↙	8 12 ↙	7 10 ↙	7 10 ↙	7 12 ↙	7 12 ↙	7 13 ↙	8 14 ↙
Houston Pilots F - 63/64	9 15 ↙	10 16 ↙	10 17 ↙	10 17 ↙	12 17 ↙	12 17 ↙	12 16 ↙	12 15 ↙	10 15 ↙	10 15 ↙	10 15 ↙	10 15 ↙	10 15 ↙	10 14 ↙	10 14 ↙	9 13 ↙	8 12 ↙	8 12 ↙	7 10 ↙	7 10 ↙	7 12 ↙	7 12 ↙	7 13 ↙	8 14 ↙
Houston Pilots E - 51/52	8 14 ↙	9 15 ↙	10 16 ↙	10 16 ↙	10 16 ↙	12 16 ↙	10 16 ↙	10 15 ↙	10 15 ↙	10 15 ↙	10 15 ↙	10 15 ↙	10 15 ↙	10 15 ↙	10 15 ↙	9 14 ↙	8 13 ↙	8 13 ↙	8 12 ↙	7 12 ↙	7 12 ↙	8 12 ↙	8 13 ↙	8 13 ↙
Houston Pilots D - 37/38	8 14 ↙	8 15 ↙	9 16 ↙	10 16 ↙	10 16 ↙	10 16 ↙	10 16 ↙	10 15 ↙	10 15 ↙	10 15 ↙	10 15 ↙	10 15 ↙	10 15 ↙	10 15 ↙	10 15 ↙	9 14 ↙	8 13 ↙	8 13 ↙	8 12 ↙	8 12 ↙	8 12 ↙	8 12 ↙	8 13 ↙	8 13 ↙
Houston Pilots C - 25/26	8 14 ↙	8 14 ↙	9 15 ↙	9 15 ↙	10 15 ↙	10 15 ↙	10 15 ↙	10 15 ↙	10 15 ↙	10 15 ↙	10 15 ↙	10 15 ↙	10 15 ↙	10 15 ↙	10 15 ↙	9 14 ↙	8 14 ↙	8 13 ↙	8 12 ↙	8 12 ↙	8 12 ↙	8 13 ↙	8 13 ↙	8 13 ↙
Houston Pilots B - 11/12	8 13 ↙	8 14 ↙	8 15 ↙	9 15 ↙	9 15 ↙	9 15 ↙	9 15 ↙	9 15 ↙	9 15 ↙	9 15 ↙	9 15 ↙	9 15 ↙	9 15 ↙	9 15 ↙	8 15 ↙	8 14 ↙	8 13 ↙	8 13 ↙	8 12 ↙	7 12 ↙	7 12 ↙	7 13 ↙	8 13 ↙	8 13 ↙
Houston Pilots A - 1 & 2 Bravo	8 13 ↙	8 14 ↙	8 14 ↙	9 15 ↙	9 15 ↙	10 15 ↙	10 16 ↙	10 16 ↙	10 16 ↙	12 16 ↙	12 16 ↙	12 16 ↙	12 17 ↙	12 16 ↙	10 16 ↙	10 15 ↙	10 15 ↙	9 15 ↙	9 14 ↙	8 14 ↙	8 14 ↙	8 14 ↙	8 14 ↙	8 14 ↙

NOTE: This is automated data that may/may not agree with the official BAM thinking that's found on the daily slides. This data should be used as a guide only.

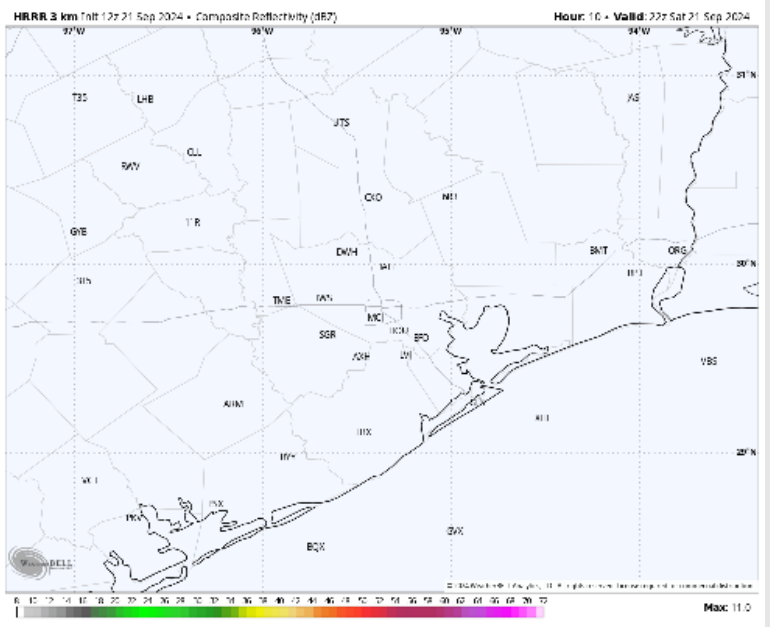
Houston Pilots: SAT. 9/21/2024



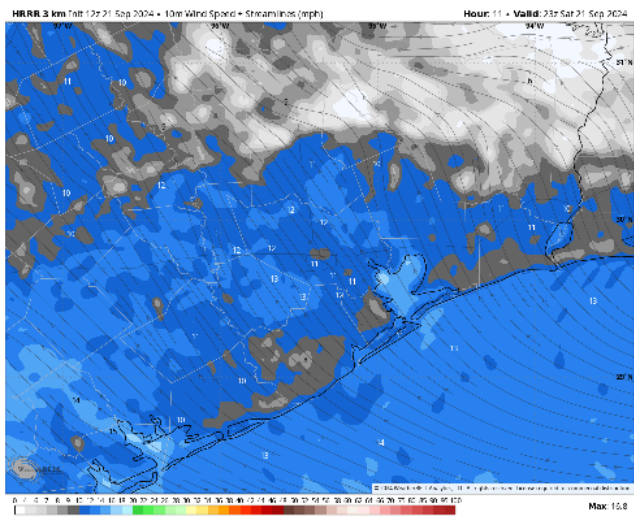
Forecast Discussion

- Precip:** Favoring dry conditions for Saturday.
- Wind:** Winds will be out of SE the rest of the day. **N of Morgan's Point:** Winds will be sustained at 6-10 kts. **S of Morgan's Point:** Winds will be sustained at 9 – 14 kts the rest of the day.
- Low Temps:** **N of Morgan's Point:** Mid 70s F. **S of Morgan's Point:** Low 80s F
- Visibility:** No fog concerns expected the rest of the day

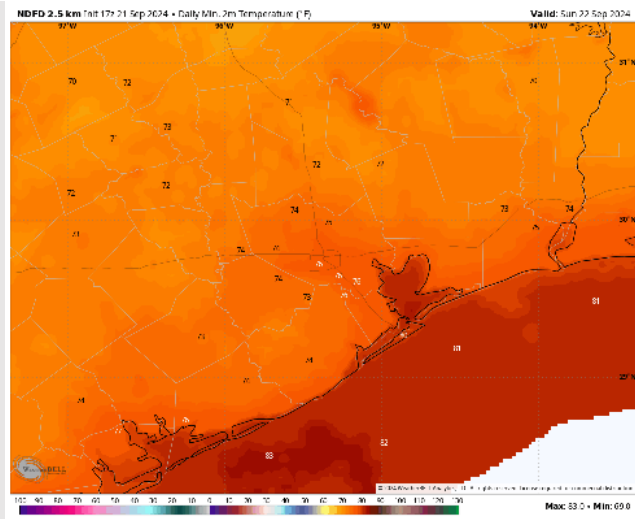
Precip Image: 5 PM CT



Wind Speed:
6 PM CT



Low Temps
SUN AM



Houston Pilots: SUN. 9/22/2024



Forecast Discussion

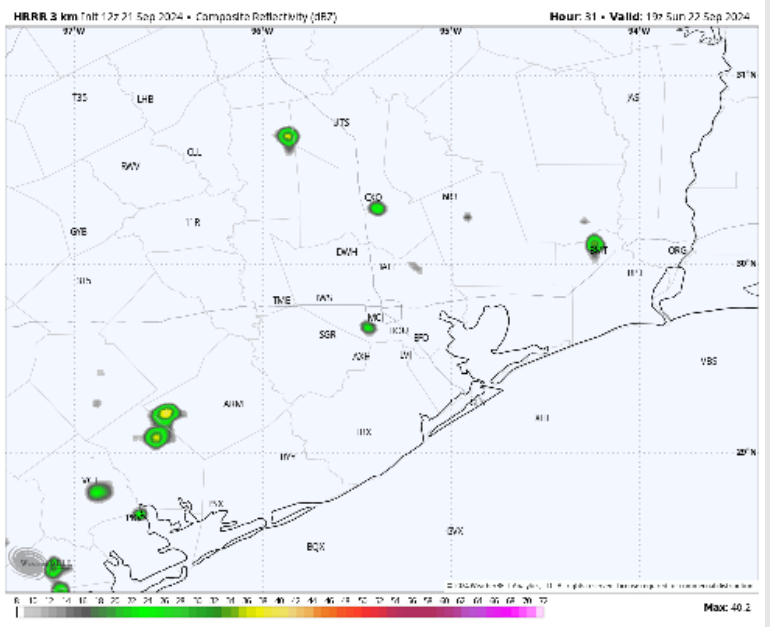
Precip: Favoring mostly dry conditions outside of a stray light shower from 10 AM through 5 PM SUN

Wind: Winds will be out of the SE throughout the day. **N of Morgan's Point:** Winds at 4 - 9 kts throughout the day. **S of Morgan's Point:** Winds will be 8-13 kts for the majority of the day outside of a brief calming to 4-9 kts from 1-5 PM.

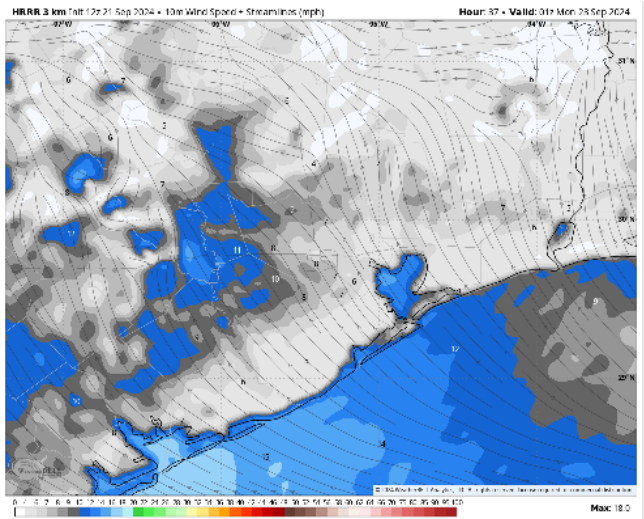
High Temps: **N of Morgan's Point:** Low 90s F. **S of Morgan's Point:** Mid to upper 80s F.

Visibility: Isolated fog possible for Stations N of Morgan's Point, however coverage favored to remain N of all stations. Visibilities will also not reach below 3 miles.

Precip Image: 2 PM CT

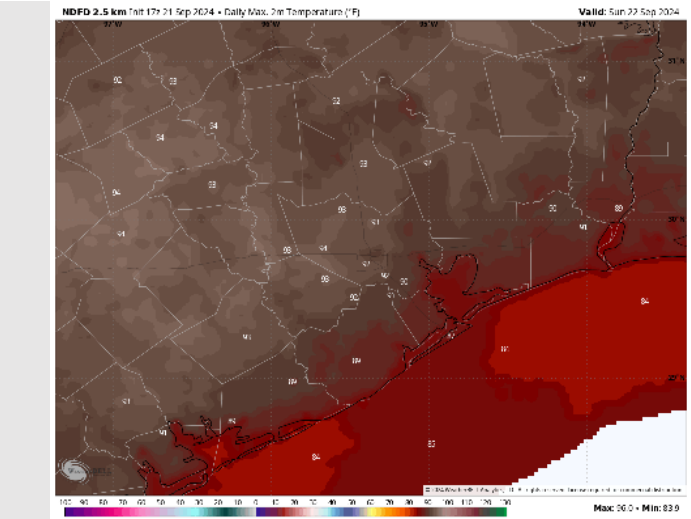


Wind Speed



8 PM CT

High Temps



Sunday

Houston Pilots: MON. 9/23/2024



Forecast Discussion

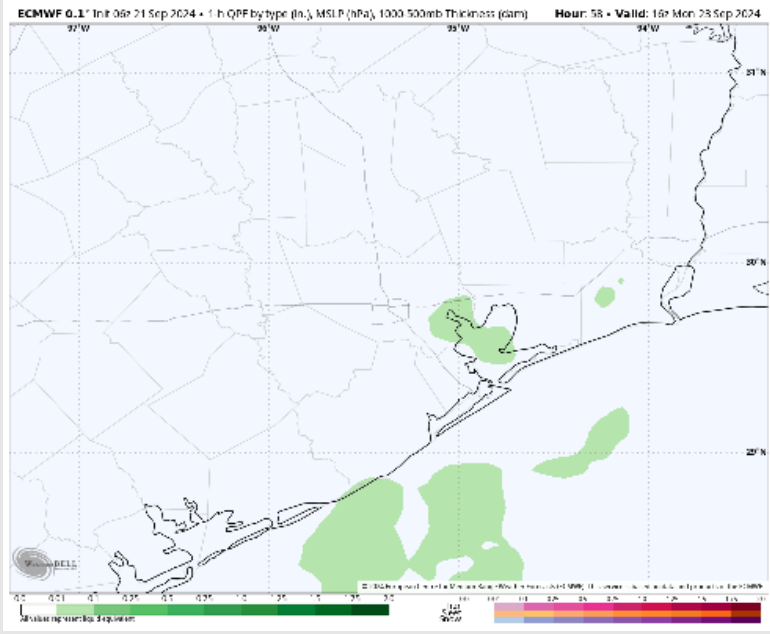
Precip: Favoring mostly dry conditions outside of isolated showers from 10 AM to 5 PM MON.

Wind: Winds will be out of the S/SE through the day. **N of Morgan's Point:** Winds will be at 3-8 kts throughout all of Monday. **S of Morgan's Point:** Winds will be at 6-11 kts through 11 AM before calming to 4-9 kts the rest of the day

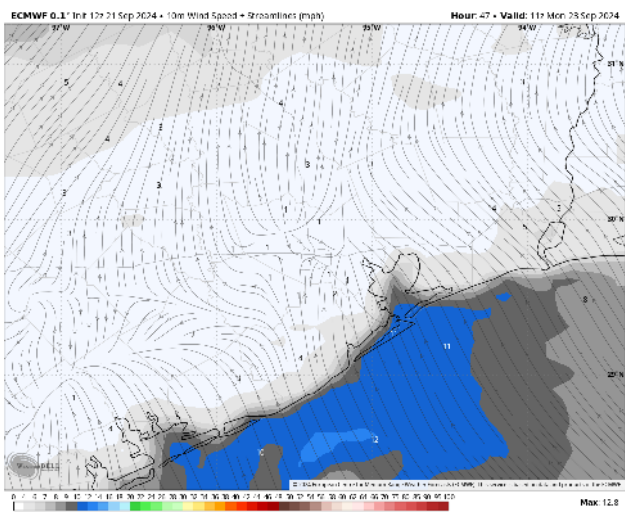
High Temps: **N of Morgan's Point:** Low 90s F. **S of Morgan's Point:** Mid/Upper 80s F.

Visibility: Not favoring any fog for Monday

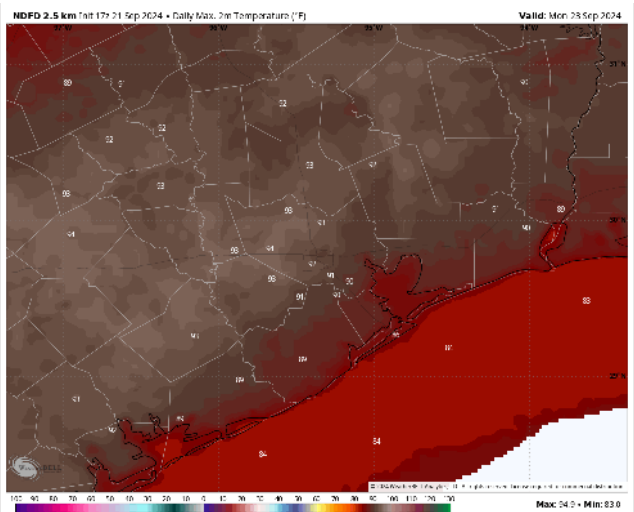
Precip Image: 11 AM CT



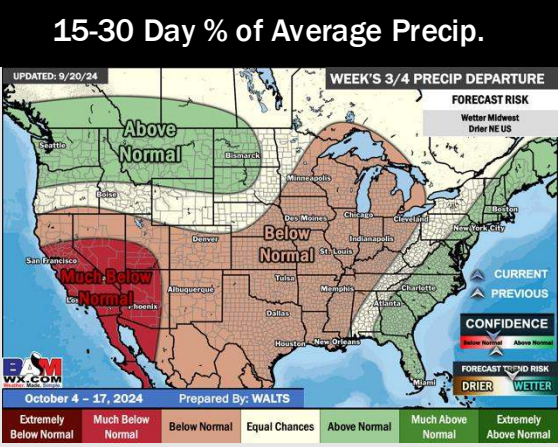
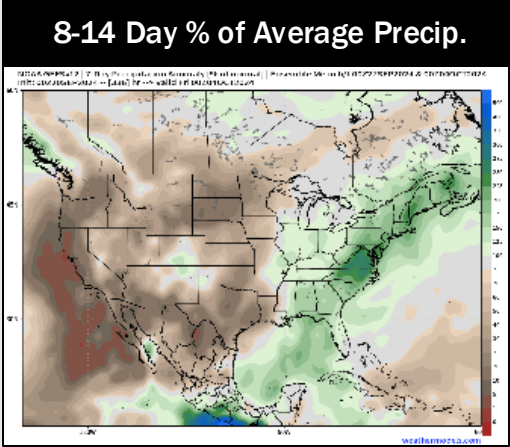
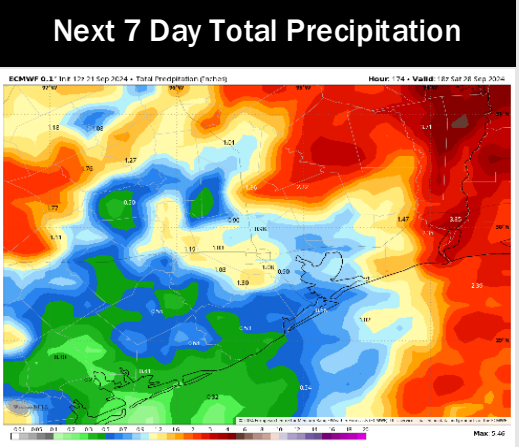
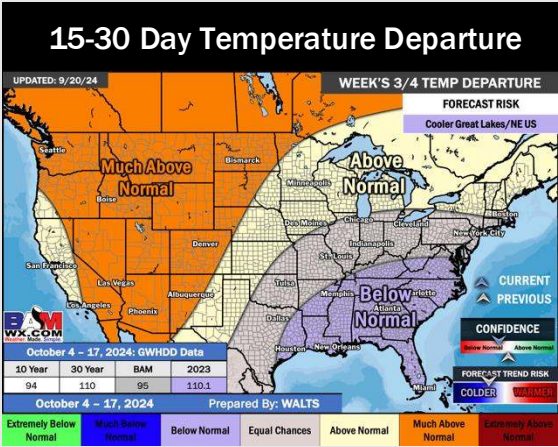
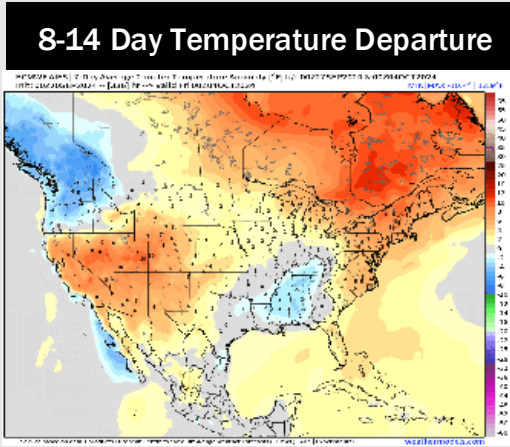
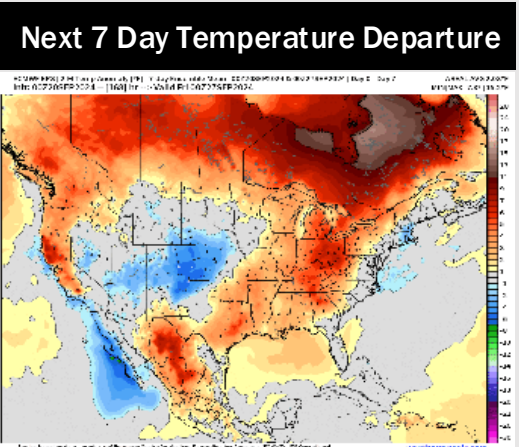
Wind Speed:
6 AM CT



High Temps
Monday



Houston Pilots: 9/21/24



- Temps are expected to be above normal for the week 1 timeframe. Favoring mostly dry conditions to start the week before an increase in chances late week 1
- Near normal temperatures are favored for week 2. Confidence is low on precip chances due to tropical storm chances.
- Below normal temperatures and much below normal precipitation chances are expected for the weeks 3/4 timeframe.