

Houston Pilots Forecast Package



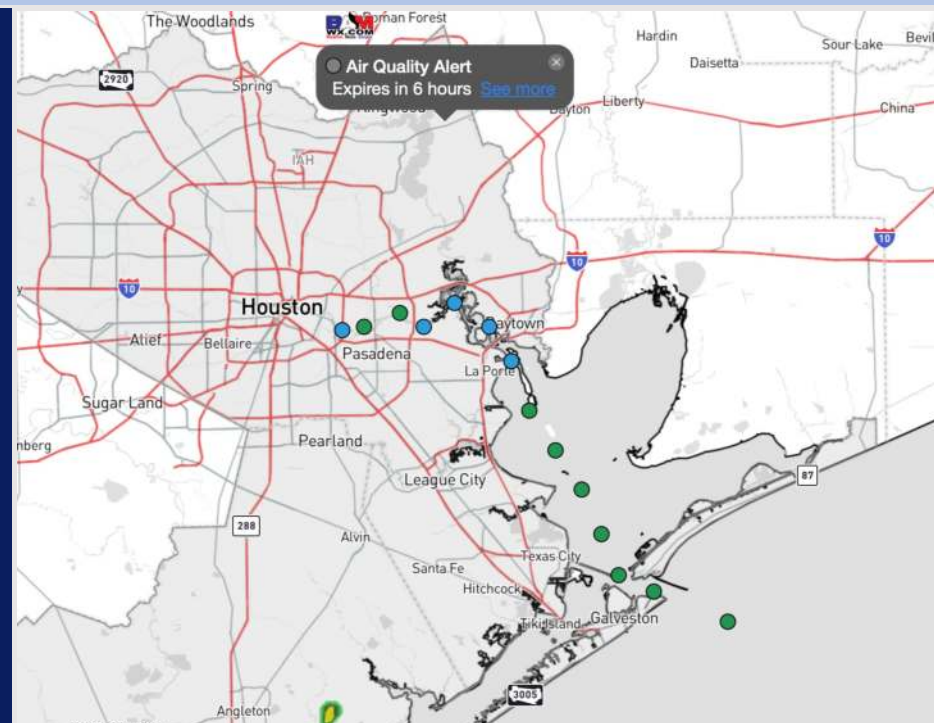
Updated: 12:45 PM CT

Wednesday, September 18, 2024

Forecaster: Alyssa Elliott

Weather Headlines

- A few pop up showers can't be ruled out, but overall conditions will be mostly dry.
- Sustained winds are not expected to exceed 10 kts.
- Tropical development will need to be monitored in the Caribbean this weekend.



Current Radar: 12:15 PM CT



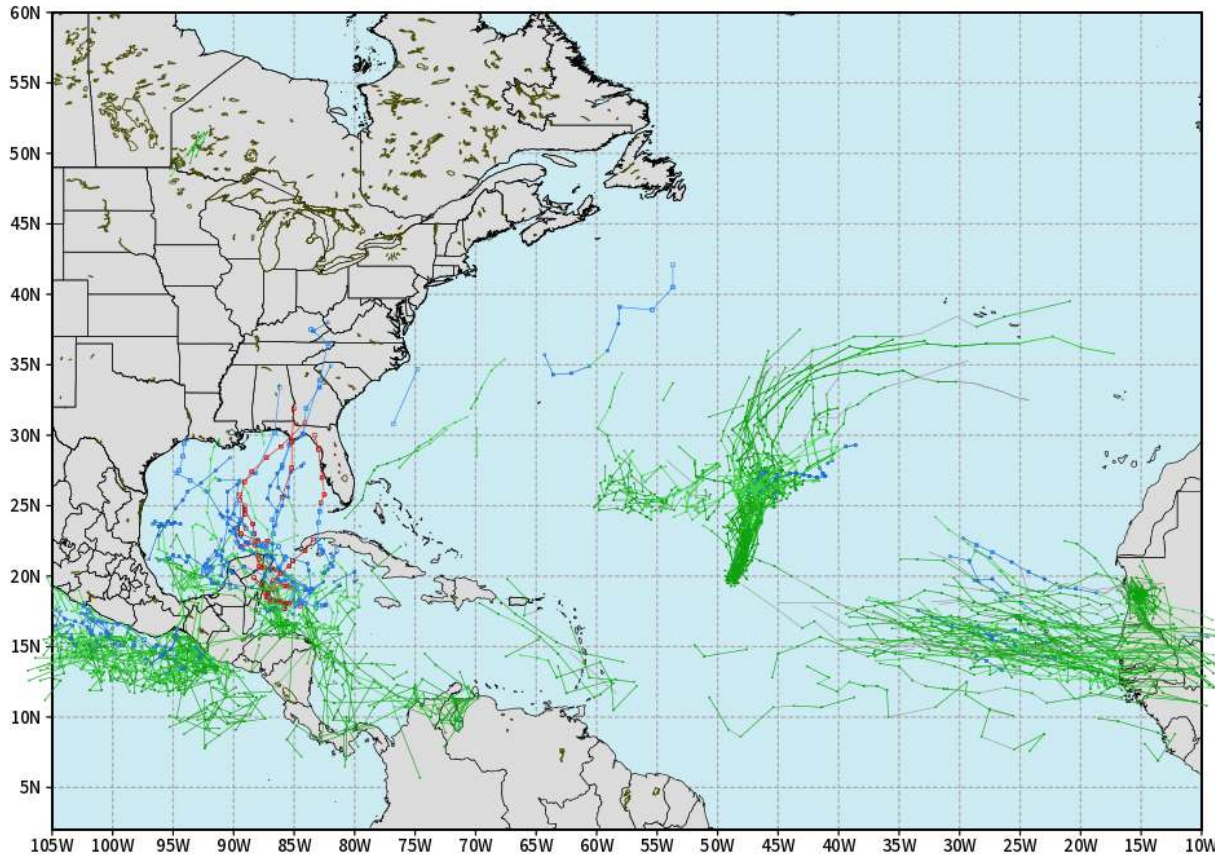
As always, please do not hesitate to reach out to us with any forecast questions via the chat option on Clarity or our on-call number, **(317)-560-8122** press **1** for forecast questions.

Houston Pilots Tropical Update

European Model Next 10 Days - Tropical Tracks

ECMWF ATLANTIC EPS Cyclone Locations --> Next [10-days]
INIT: 00Z18SEP2024 --> UNTIL 00Z28SEP2024

o-o ENSEMBLE MEAN
o-o 1000 - 1010 hPa
o-o 980 - 999 hPa
o-o 960 - 979 hPa
o-o 950 - 959 hPa
o-o < 950 hPa



weathermodels.com

Tropical Disturbance Gordon could intensify into a Tropical Storm once again as it pushes northeast, with no landfall impacts favored.

Additional tropical development is favored in the Caribbean later this weekend into early next week. No impacts for Houston within the next 7 Days.

Houston Pilots Visibility Chart (miles)



Forecast Confidence



Houston Pilots N - 610 Bridge	10	10	10	10	10	10	10	10	10	10	10	10	10	10	10	10	9	6.9	5.9	4.9	5.9	10	10	10	10
Houston Pilots M - Kinder 1	10	10	10	10	10	10	10	10	10	10	10	10	10	10	10	10	10	6.9	5.9	4.9	5.9	10	10	10	10
Houston Pilots L - Greens Bayou	10	10	10	10	10	10	10	10	10	10	10	10	10	10	10	10	10	6.9	5.9	4.9	5.9	10	10	10	10
Houston Pilots K - Shell Crude	10	10	10	10	10	10	10	10	10	10	10	10	10	10	10	10	10	6.9	5.9	4.9	5.9	10	10	10	10
Houston Pilots J - Lynchburg Ferries	10	10	10	10	10	10	10	10	10	10	10	10	10	10	10	10	10	6.9	5.9	3.9	5.9	10	10	10	10
Houston Pilots I - Exxon 3	10	10	10	10	10	10	10	10	10	10	10	10	10	10	10	10	10	6.9	5.9	4.9	5.9	10	10	10	10
Houston Pilots H - Morgans Point	10	10	10	10	10	10	10	10	10	10	10	10	10	10	10	10	10	6.9	5.9	4.9	5.9	10	10	10	10
Houston Pilots G - 75/76	10	10	10	10	10	10	10	10	10	10	10	10	10	10	10	10	10	7.9	6.9	5.9	4.9	10	10	10	10
Houston Pilots F - 63/64	10	10	10	10	10	10	10	10	10	10	10	10	10	10	10	10	10	9	6.9	6.9	4.9	10	10	10	10
Houston Pilots E - 51/52	10	10	10	10	10	10	10	10	10	10	10	10	10	10	10	10	10	9	6.9	6.9	5.9	10	10	9	10
Houston Pilots D - 37/38	10	10	10	10	10	10	10	10	10	10	10	10	10	10	10	10	10	9	6.9	6.9	5.9	10	10	9	10
Houston Pilots C - 25/26	10	10	10	10	10	10	10	10	10	10	10	10	10	10	10	10	10	9	7.9	6.9	6.9	10	10	9	10
Houston Pilots B - 11/12	10	10	10	10	10	10	10	10	10	10	10	10	10	10	10	10	10	10	9	6.9	6.9	10	10	9	9
Houston Pilots A - 1 & 2 Bravo	10	10	10	10	10	10	10	10	10	10	10	10	10	10	10	10	10	10	10	9	6.9	10	10	9	10

NOTE: This is automated data that may/may not agree with the official BAM thinking that's found on the daily slides or special visibility report slides. This data should be used as a guide only

Houston Pilots Wind Chart



Forecast Confidence

Above Normal Below Normal

Sustained wind 10 Knots

Gusts 15 Knots

Wind from the SE

Example

10

15

↙

Wind	Wed 2 pm	Wed 3 pm	Wed 4 pm	Wed 5 pm	Wed 6 pm	Wed 7 pm	Wed 8 pm	Wed 9 pm	Wed 10 pm	Wed 11 pm	Thu 12 am	Thu 1 am	Thu 2 am	Thu 3 am	Thu 4 am	Thu 5 am	Thu 6 am	Thu 7 am	Thu 8 am	Thu 9 am	Thu 10 am	Thu 11 am	Thu 12 pm	Thu 1 pm	
Houston Pilots N - 610 Bridge	3 8 ↖	5 8 ↖	6 9 ↖	6 12 ↖	6 13 ↖	7 13 ↖	7 14 ↖	7 13 ↖	6 12 ↖	6 10 ↖	5 10 ↖	3 9 ↖	3 9 ↖	3 7 ↖	3 6 ↖	2 5 ↖	1 5 ↖	1 5 ↖	1 3 ↖	1 3 ↖	1 5 ↖	1 5 ↖	1 5 ↖	2 5 ↖	3 7 ↖
Houston Pilots M - Kinder 1	3 8 ↖	5 8 ↖	6 9 ↖	6 12 ↖	6 13 ↖	7 13 ↖	7 13 ↖	6 13 ↖	6 12 ↖	5 10 ↖	5 9 ↖	3 9 ↖	3 8 ↖	3 7 ↖	3 6 ↖	2 6 ↖	1 5 ↖	1 5 ↖	1 3 ↖	1 3 ↖	1 5 ↖	1 5 ↖	1 5 ↖	2 5 ↖	3 7 ↖
Houston Pilots L - Greens Bayou	3 8 ↖	5 8 ↖	6 10 ↖	6 12 ↖	6 13 ↖	7 13 ↖	7 13 ↖	6 13 ↖	6 10 ↖	5 10 ↖	3 9 ↖	3 8 ↖	3 8 ↖	3 7 ↖	2 6 ↖	2 5 ↖	1 5 ↖	1 5 ↖	1 3 ↖	1 3 ↖	1 5 ↖	1 5 ↖	1 5 ↖	2 5 ↖	3 7 ↖
Houston Pilots K - Shell Crude	3 8 ↖	5 9 ↖	6 10 ↖	6 12 ↖	6 13 ↖	7 13 ↖	7 13 ↖	6 12 ↖	6 10 ↖	5 10 ↖	3 9 ↖	3 8 ↖	3 8 ↖	3 7 ↖	2 6 ↖	2 5 ↖	1 5 ↖	1 3 ↖	1 3 ↖	1 3 ↖	1 5 ↖	1 5 ↖	1 5 ↖	2 5 ↖	3 7 ↖
Houston Pilots J - Lynchburg Ferries	3 7 ↖	5 8 ↖	6 9 ↖	6 12 ↖	6 13 ↖	6 13 ↖	6 13 ↖	6 12 ↖	5 10 ↖	3 9 ↖	3 8 ↖	3 8 ↖	3 7 ↖	2 6 ↖	2 6 ↖	1 5 ↖	1 5 ↖	1 3 ↖	1 3 ↖	1 3 ↖	1 5 ↖	1 5 ↖	1 5 ↖	2 5 ↖	2 7 ↖
Houston Pilots I - Exxon 3	6 10 ↖	7 12 ↖	8 13 ↖	9 14 ↖	9 14 ↖	9 14 ↖	9 14 ↖	9 14 ↖	8 13 ↖	8 12 ↖	8 12 ↖	7 10 ↖	7 10 ↖	6 9 ↖	6 8 ↖	5 7 ↖	3 6 ↖	3 5 ↖	2 5 ↖	2 5 ↖	2 5 ↖	2 5 ↖	3 6 ↖	3 6 ↖	3 7 ↖
Houston Pilots H - Morgans Point	6 10 ↖	7 12 ↖	8 13 ↖	8 14 ↖	9 13 ↖	9 14 ↖	9 14 ↖	8 13 ↖	8 13 ↖	8 12 ↖	8 12 ↖	7 10 ↖	7 10 ↖	6 9 ↖	6 8 ↖	5 7 ↖	3 6 ↖	3 5 ↖	2 5 ↖	2 5 ↖	2 5 ↖	3 6 ↖	3 6 ↖	3 6 ↖	3 7 ↖
Houston Pilots G - 75/76	6 10 ↖	7 12 ↖	8 13 ↖	8 14 ↖	9 14 ↖	9 14 ↖	9 14 ↖	9 13 ↖	8 13 ↖	8 13 ↖	8 12 ↖	8 10 ↖	8 10 ↖	8 9 ↖	7 8 ↖	6 7 ↖	5 6 ↖	3 5 ↖	3 5 ↖	3 5 ↖	3 6 ↖	3 6 ↖	3 6 ↖	3 7 ↖	3 7 ↖
Houston Pilots F - 63/64	6 10 ↖	6 10 ↖	7 12 ↖	8 13 ↖	8 13 ↖	9 14 ↖	9 13 ↖	9 13 ↖	8 13 ↖	8 13 ↖	8 12 ↖	8 12 ↖	8 10 ↖	7 9 ↖	7 9 ↖	6 7 ↖	5 6 ↖	3 5 ↖	3 5 ↖	3 5 ↖	3 6 ↖	3 6 ↖	3 6 ↖	3 7 ↖	3 7 ↖
Houston Pilots E - 51/52	6 9 ↖	6 10 ↖	7 12 ↖	8 13 ↖	8 13 ↖	8 13 ↖	8 13 ↖	8 13 ↖	8 13 ↖	8 13 ↖	8 13 ↖	8 13 ↖	8 13 ↖	7 10 ↖	7 9 ↖	6 7 ↖	5 6 ↖	3 5 ↖	3 5 ↖	3 5 ↖	3 6 ↖	3 6 ↖	3 6 ↖	3 7 ↖	3 7 ↖
Houston Pilots D - 37/38	6 9 ↖	6 10 ↖	6 12 ↖	8 12 ↖	8 13 ↖	8 13 ↖	8 13 ↖	8 13 ↖	8 13 ↖	8 13 ↖	8 13 ↖	8 13 ↖	8 12 ↖	7 10 ↖	7 9 ↖	6 7 ↖	5 6 ↖	3 5 ↖	3 5 ↖	3 5 ↖	3 6 ↖	3 6 ↖	3 6 ↖	3 7 ↖	3 7 ↖
Houston Pilots C - 25/26	6 9 ↖	6 9 ↖	6 10 ↖	7 12 ↖	8 13 ↖	8 13 ↖	8 13 ↖	8 13 ↖	8 12 ↖	8 13 ↖	8 12 ↖	8 12 ↖	8 12 ↖	7 10 ↖	6 9 ↖	6 7 ↖	5 6 ↖	3 5 ↖	3 5 ↖	3 5 ↖	3 6 ↖	3 6 ↖	3 6 ↖	3 7 ↖	3 7 ↖
Houston Pilots B - 11/12	6 9 ↖	6 9 ↖	6 10 ↖	7 12 ↖	7 13 ↖	8 13 ↖	8 12 ↖	7 12 ↖	7 12 ↖	7 13 ↖	7 12 ↖	7 12 ↖	6 10 ↖	6 9 ↖	6 7 ↖	6 6 ↖	3 5 ↖	3 5 ↖	3 5 ↖	3 5 ↖	3 6 ↖	3 6 ↖	3 6 ↖	3 7 ↖	3 7 ↖
Houston Pilots A - 1 & 2 Bravo	5 8 ↖	6 8 ↖	6 9 ↖	6 10 ↖	7 13 ↖	8 13 ↖	8 13 ↖	8 13 ↖	8 13 ↖	8 14 ↖	8 13 ↖	8 13 ↖	8 13 ↖	8 12 ↖	7 10 ↖	7 10 ↖	6 8 ↖	5 7 ↖	3 6 ↖	3 6 ↖	3 6 ↖	3 6 ↖	3 7 ↖	3 7 ↖	3 7 ↖

NOTE: This is automated data that may/may not agree with the official BAM thinking that's found on the daily slides. This data should be used as a guide only.

Forecast Discussion

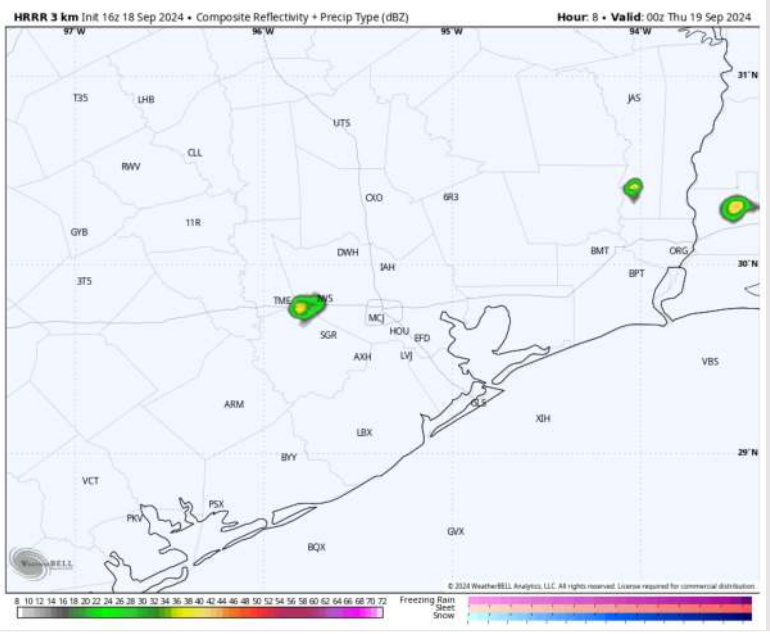
Precip: Favoring mostly dry conditions with only a very low-end, 10% risk for an isolated shower between 4 – 8 PM.

Wind: Winds will be generally out of the SE for the PM. **N of Morgan's Point:** Winds will be sustained at 5 – 10 kts throughout the day. **S of Morgan's Point:** Winds will be sustained at 13 – 18 kts throughout the PM.

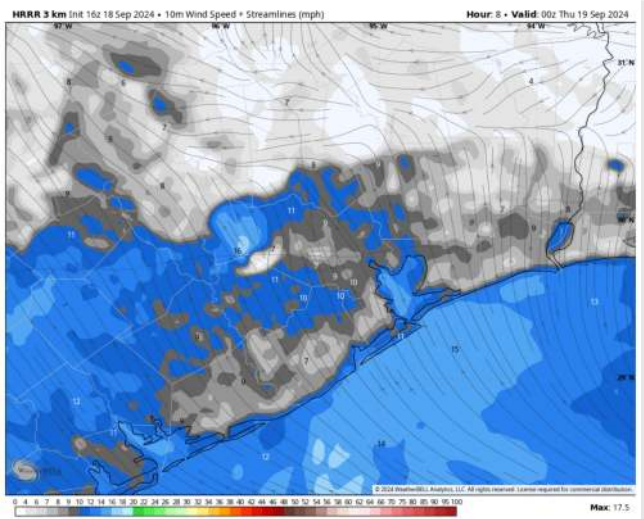
Low Temps: **N of Morgan's Point:** Upper 70s F. **S of Morgan's Point:** Low 80s F

Visibility: No fog favored for tonight, however keeping an eye on tomorrow AM for a low end, patchy fog risk N of stations.

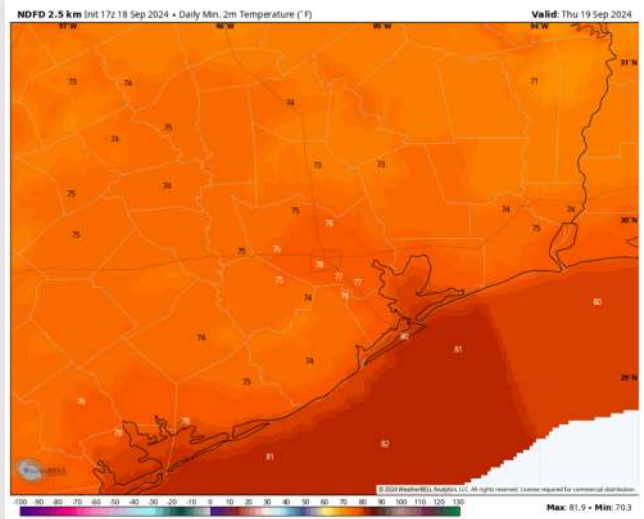
Precip Image: 7 PM CT



Wind Speed:
7 PM CT



Low Temps
THU AM



Houston Pilots: THU. 9/19/2024



Forecast Discussion

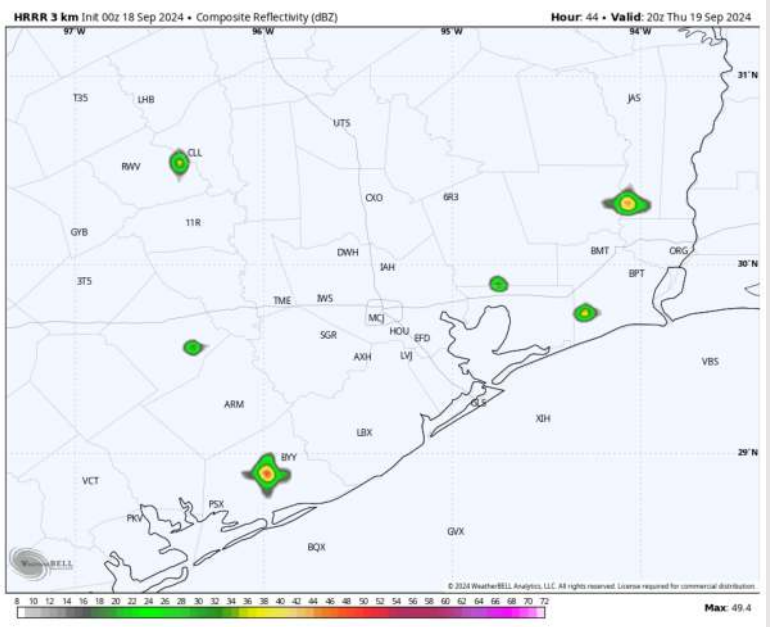
Precip: Favoring a 10% chance of pop-up downpours from 2PM - 7PM.

Wind: Winds will be variable in direction throughout Thursday AM, becoming fully out of the SE by 5PM. **N of Morgan's Point:** Winds at 2 - 7 kts throughout the day. **S of Morgan's Point:** Winds will be 5 - 10 kts throughout the day.

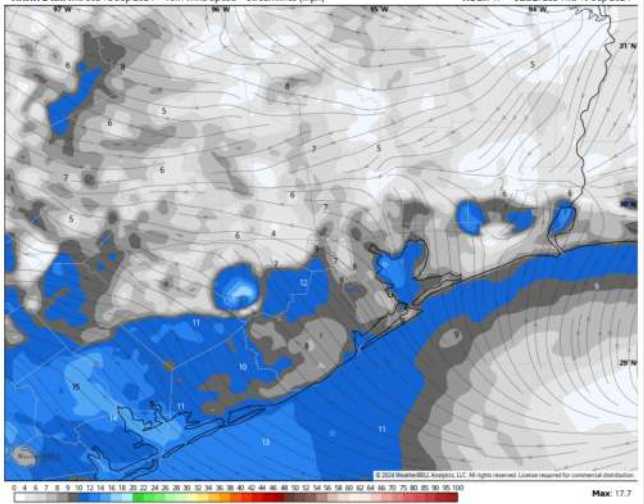
High Temps: **N of Morgan's Point:** Upper 80s F. **S of Morgan's Point:** Mid 80s F.

Visibility: Low end risk for patchy fog to form N of Houston however not anticipating any impacts to the stations.

Precip Image: 3 PM CT

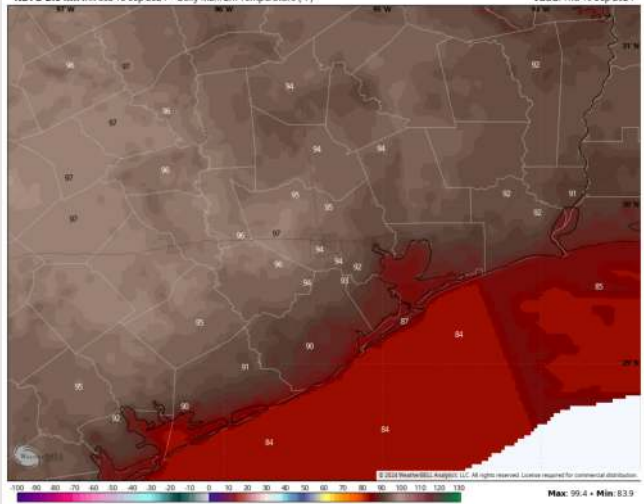


HRRR 3 km Init 00z 18 Sep 2024 • 10m Wind Speed • Streamlines (mph) Hour: 47 • Valid: 23z Thu 19 Sep 2024



Wind Speed
6 PM CT

NDFD 2.5 km Init 05z 18 Sep 2024 • Daily Max: 2m Temperature (°F) Valid: Thu 19 Sep 2024



High Temps
Thursday

Houston Pilots: FRI. 9/20/2024



Forecast Discussion

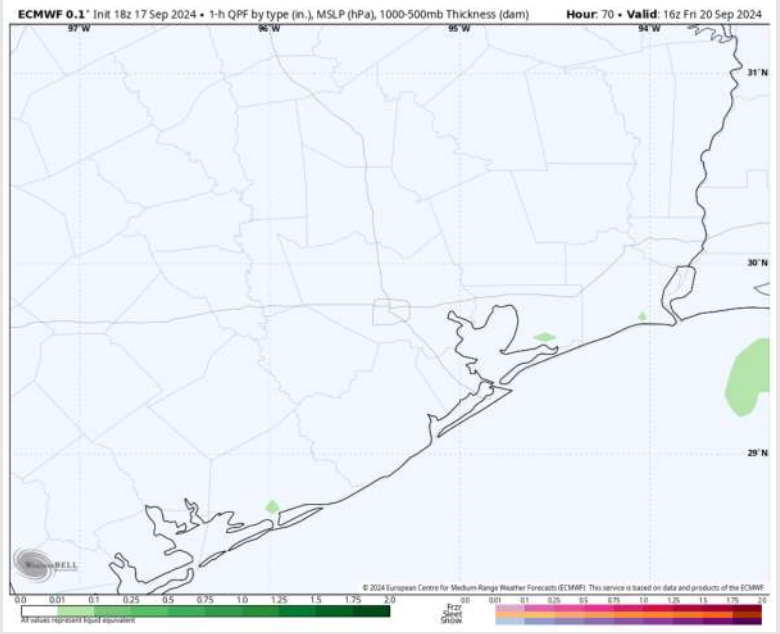
Precip: Dry conditions are favored for Friday, with only a few sprinkles S of Morgan's Point from 9 AM – 1 PM.

Wind: Winds will be variable in direction through 9 PM, settling out of the S after that time. **N of Morgan's Point:** Winds will be at 2-7 kts throughout the day. **S of Morgan's Point:** Winds will be at 4 - 8 kts throughout the day.

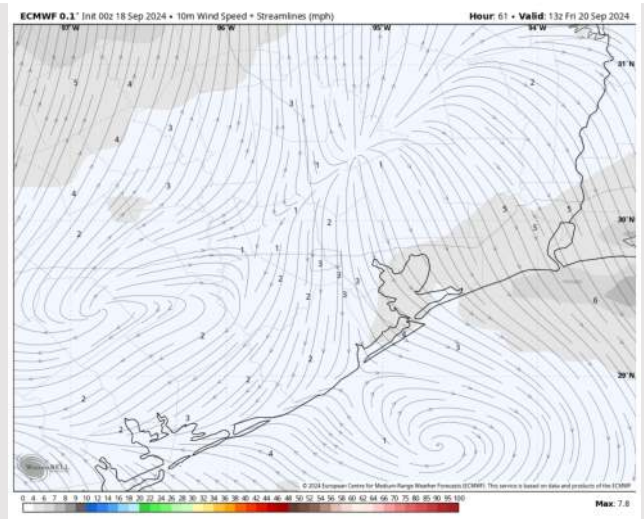
Low Temps: **N of Morgan's Point:** Upper 80s F. **S of Morgan's Point:** Mid 80s F.

Visibility: No fog favored for Friday.

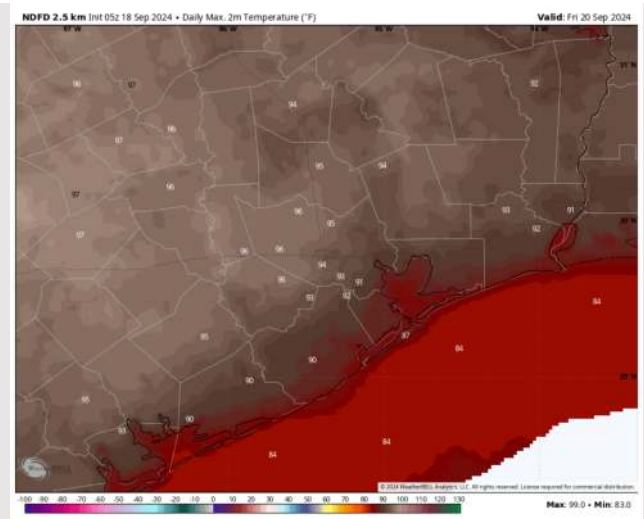
Precip Image: 11 AM CT



Wind Speed:
8 AM CT

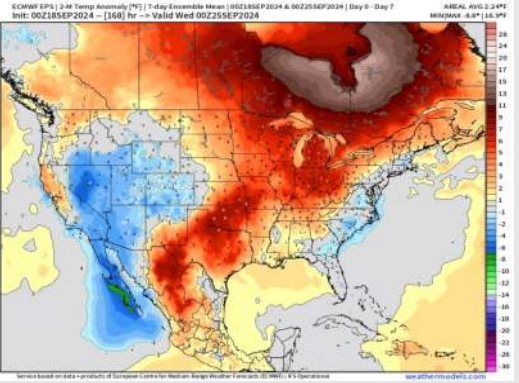


High Temps
Friday

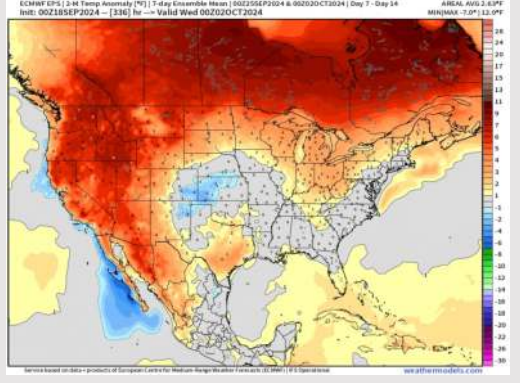


Houston Pilots: 9/18/24

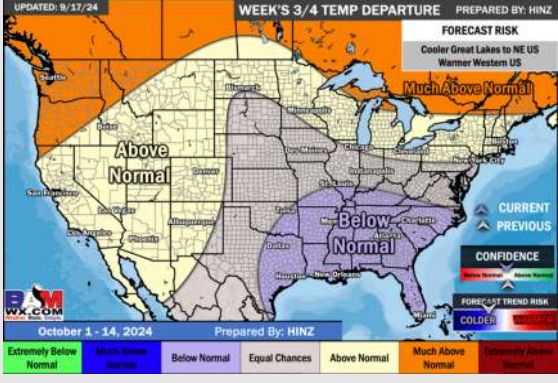
Next 7 Day Temperature Departure



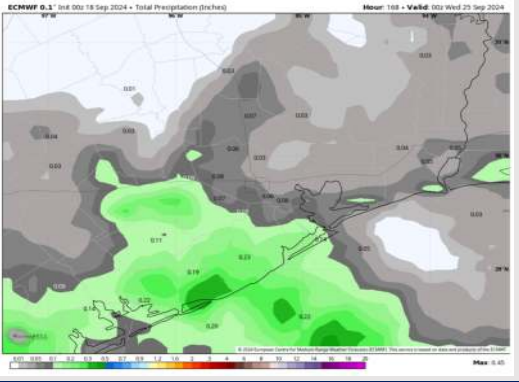
8-14 Day Temperature Departure



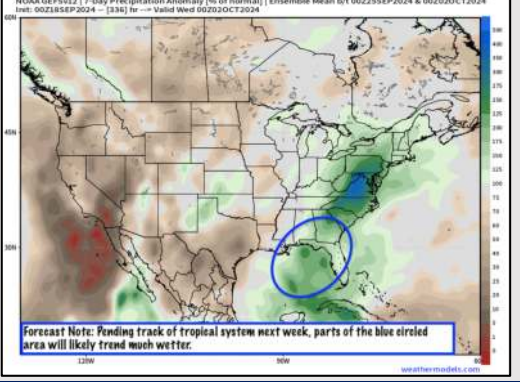
15-30 Day Temperature Departure



Next 7 Day Total Precipitation



8-14 Day % of Average Precip.



15-30 Day % of Average Precip.



- Temps are expected to be above normal for the week 1 timeframe. Favoring mostly dry conditions for the week 1 timeframe with a few isolated showers possible moving into the weekend.
- Slightly above normal temperatures are favored for week 2 with below normal rain chances.
- Below normal temperatures and much below normal precipitation chances are expected for the weeks ¾ timeframe.