

Houston Pilots Forecast Package



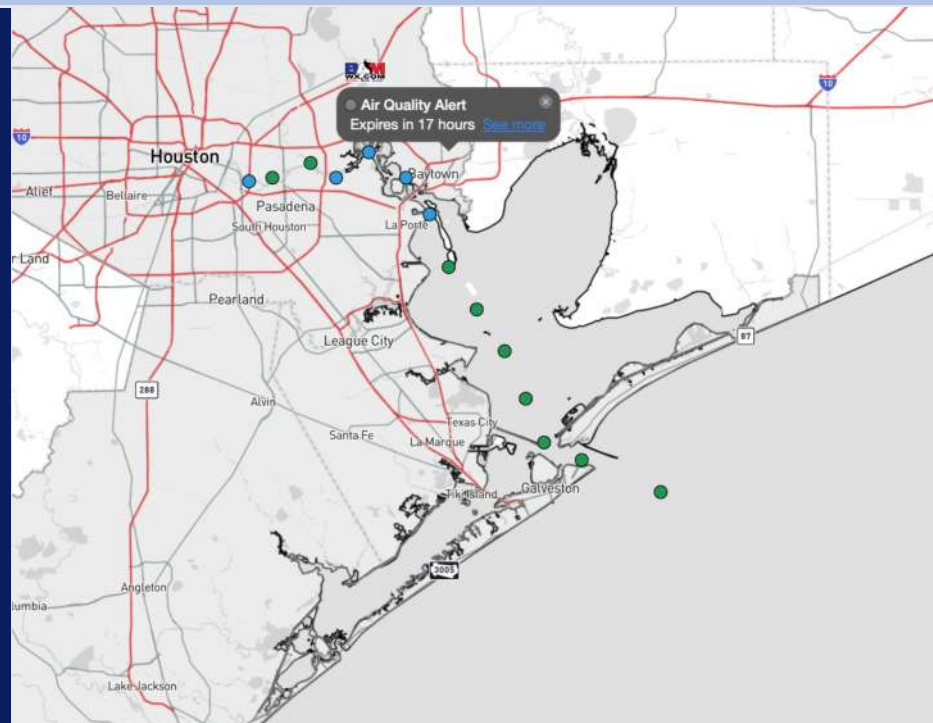
Updated: 1:00 AM CT

Wednesday, September 18, 2024

Forecaster: John Kemper

Weather Headlines

- A few pop up showers can't be ruled out, but overall conditions will be mostly dry.
- Sustained winds are not expected to exceed 10 kts.
- Tropical development will need to be monitored in Caribbean this Weekend



Current Radar: 12:45 AM CT



As always, please do not hesitate to reach out to us with any forecast questions via the chat option on Clarity or our on-call number, **(317)-560-8122** press **1** for forecast questions.

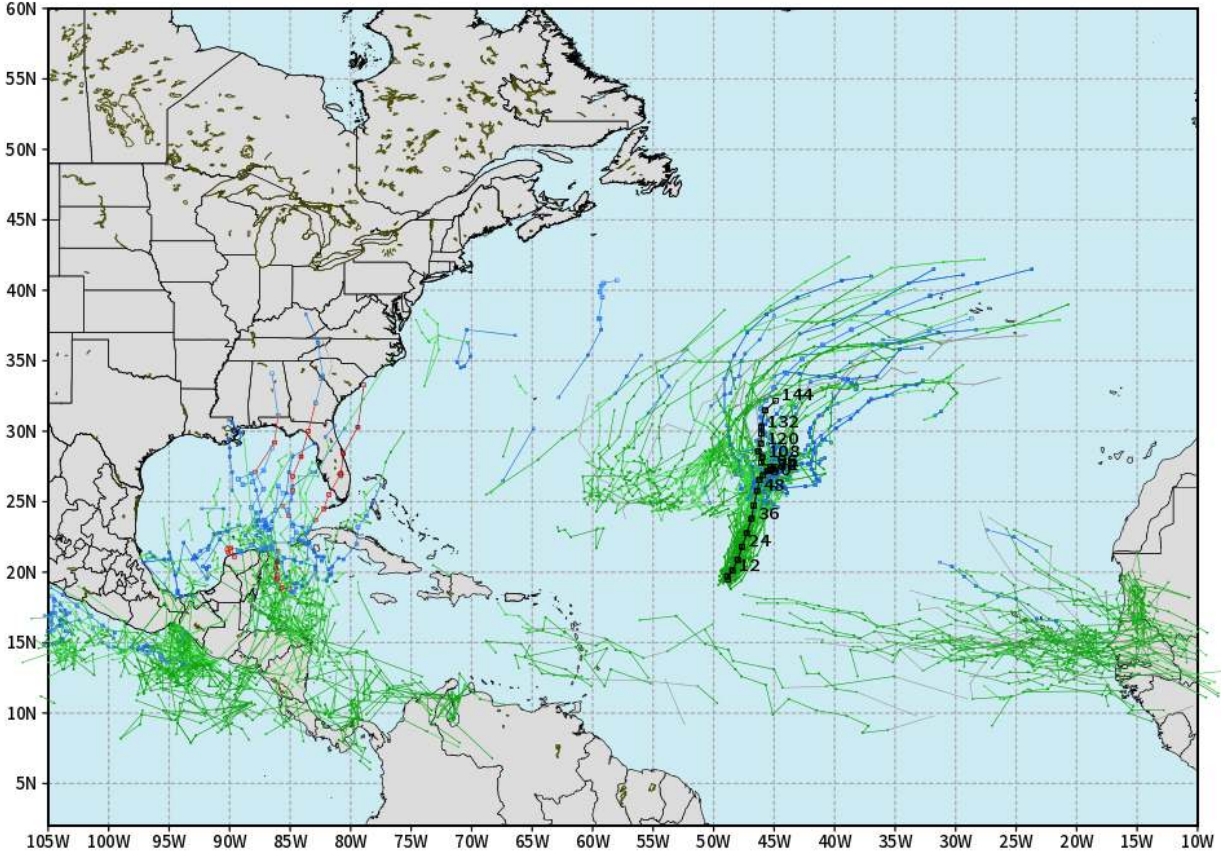
Houston Pilots Tropical Update



European Model Next 10 Days - Tropical Tracks

ECMWF ATLANTIC EPS Cyclone Locations --> Next [10-days]
INIT: 12Z17SEP2024 --> UNTIL 12Z27SEP2024

- o-o ENSEMBLE MEAN
- o-o 1000 - 1010 hPa
- o-o 980 - 999 hPa
- o-o 960 - 979 hPa
- o-o 950 - 959 hPa
- o-o < 950 hPa



weathermodels.com

Tropical Disturbance Gordon could intensify into a Tropical Storm once again as it pushes northeast, with no landfall impacts favored.

Additional tropical development is favored in the Caribbean later this weekend into early next week. No impacts for Houston within the next 7 Days.

Houston Pilots Visibility Chart (miles)



Forecast Confidence



Visibility	Wed 2 am	Wed 3 am	Wed 4 am	Wed 5 am	Wed 6 am	Wed 7 am	Wed 8 am	Wed 9 am	Wed 10 am	Wed 11 am	Wed 12 pm	Wed 1 pm	Wed 2 pm	Wed 3 pm	Wed 4 pm	Wed 5 pm	Wed 6 pm	Wed 7 pm	Wed 8 pm	Wed 9 pm	Wed 10 pm	Wed 11 pm	Thu 12 am	Thu 1 am
Houston Pilots N - 610 Bridge	10	10	10	10	9	6.9	6.9	6.9	10	10	10	10	10	10	10	10	10	10	10	10	10	10	10	10
Houston Pilots M - Kinder 1	10	10	10	10	9	6.9	6.9	6.9	10	10	10	10	10	10	10	10	10	10	10	10	10	10	10	10
Houston Pilots L - Greens Bayou	10	10	10	10	9	6.9	6.9	6.9	10	10	10	10	10	10	10	10	10	10	10	10	10	10	10	10
Houston Pilots K - Shell Crude	10	10	10	10	9	6.9	6.9	6.9	10	10	10	10	10	10	10	10	10	10	10	10	10	10	10	10
Houston Pilots J - Lynchburg Ferries	10	10	10	10	7.9	6.9	6.9	6.9	10	10	10	10	10	10	10	10	10	10	10	10	10	10	10	10
Houston Pilots I - Exxon 3	10	10	10	10	7.9	6.9	6.9	6.9	10	10	10	10	10	10	10	10	10	10	10	10	10	10	10	10
Houston Pilots H - Morgans Point	10	10	10	10	10	7.9	6.9	6.9	10	10	10	10	10	10	10	10	10	10	10	10	10	10	10	10
Houston Pilots G - 75/76	10	10	10	10	10	9	8	6.9	10	10	10	10	10	10	10	10	10	10	10	10	10	10	10	9
Houston Pilots F - 63/64	10	10	10	10	10	9	8	6.9	10	10	10	10	10	10	10	10	10	10	10	10	10	10	10	9
Houston Pilots E - 51/52	10	10	10	10	10	10	9	6.9	10	10	10	10	10	10	10	10	10	10	10	10	10	10	10	9
Houston Pilots D - 37/38	10	10	10	10	10	10	9	6.9	10	10	10	10	10	10	10	10	10	10	10	10	10	10	10	9
Houston Pilots C - 25/26	10	10	10	10	10	10	10	6.9	10	10	10	10	10	10	10	10	10	10	10	10	10	10	10	9
Houston Pilots B - 11/12	10	10	10	10	10	10	10	9	10	10	10	10	10	10	10	10	10	10	10	10	10	10	10	10
Houston Pilots A - 1 & 2 Bravo	10	10	10	10	10	10	10	9	10	10	10	10	10	10	10	10	10	10	10	10	10	10	10	10

NOTE: This is automated data that may/may not agree with the official BAM thinking that's found on the daily slides or special visibility report slides. This data should be used as a guide only

Houston Pilots Wind Chart



Forecast Confidence

Above Normal Below Normal

Sustained wind 10 Knots

Gusts 15 Knots

Wind from the SE

Example

10

15

↙

Wind	Wed 2 am	Wed 3 am	Wed 4 am	Wed 5 am	Wed 6 am	Wed 7 am	Wed 8 am	Wed 9 am	Wed 10 am	Wed 11 am	Wed 12 pm	Wed 1 pm	Wed 2 pm	Wed 3 pm	Wed 4 pm	Wed 5 pm	Wed 6 pm	Wed 7 pm	Wed 8 pm	Wed 9 pm	Wed 10 pm	Wed 11 pm	Thu 12 am	Thu 1 am	
Houston Pilots N - 610 Bridge	3 7 ↑	3 6 ↑	2 6 ↑	2 6 ↑	1 5 ↑	1 5 ↔	1 3 ↔	1 3 ↔	1 3 ↔	1 5 ↑	2 6 ↑	3 6 ↔	3 7 ↔	3 8 ↔	5 9 ↔	6 10 ↔	6 13 ↔	7 13 ↔	7 13 ↔	6 13 ↔	6 10 ↔	5 10 ↔	3 9 ↑	3 8 ↑	
Houston Pilots M - Kinder 1	3 7 ↑	3 6 ↑	2 6 ↑	2 6 ↑	1 5 ↑	1 5 ↔	1 3 ↔	1 3 ↔	1 3 ↔	1 5 ↑	2 6 ↑	3 6 ↔	3 7 ↔	3 8 ↔	5 9 ↔	6 10 ↔	6 12 ↔	7 13 ↔	7 13 ↔	6 12 ↔	6 10 ↔	5 9 ↔	3 8 ↑	3 8 ↑	
Houston Pilots L - Greens Bayou	3 7 ↑	2 6 ↑	2 5 ↑	2 5 ↑	1 5 ↑	1 3 ↔	1 3 ↔	1 3 ↔	1 3 ↔	1 5 ↑	2 6 ↑	3 6 ↔	3 7 ↔	3 8 ↔	5 9 ↔	6 10 ↔	6 12 ↔	6 13 ↔	7 13 ↔	6 12 ↔	6 10 ↔	5 9 ↔	3 8 ↑	3 7 ↑	
Houston Pilots K - Shell Crude	3 7 ↑	2 6 ↑	2 5 ↑	2 5 ↑	1 5 ↑	1 3 ↔	1 3 ↔	1 3 ↔	1 3 ↔	1 5 ↑	2 6 ↑	3 7 ↔	3 7 ↔	5 8 ↔	6 9 ↔	6 12 ↔	6 12 ↔	6 13 ↔	7 13 ↔	6 12 ↔	5 10 ↔	3 9 ↑	3 8 ↑	3 7 ↑	
Houston Pilots J - Lynchburg Ferries	2 6 ↑	2 5 ↑	2 5 ↑	1 5 ↑	1 5 ↔	1 3 ↔	1 3 ↔	1 3 ↔	1 3 ↔	1 5 ↑	1 6 ↑	2 6 ↔	3 7 ↔	3 7 ↔	5 9 ↔	6 10 ↔	6 12 ↔	6 13 ↔	6 13 ↔	6 12 ↔	5 10 ↔	3 9 ↑	3 7 ↑	3 7 ↑	
Houston Pilots I - Exxon 3	6 9 ↑	6 8 ↑	5 7 ↑	5 7 ↑	3 6 ↑	3 5 ↑	2 5 ↔	2 5 ↔	2 5 ↔	2 6 ↑	3 7 ↔	3 8 ↔	5 9 ↔	6 10 ↔	8 12 ↔	8 13 ↔	8 14 ↔	8 14 ↔	9 14 ↔	9 13 ↔	9 12 ↔	8 12 ↔	8 10 ↔	7 9 ↑	6 8 ↑
Houston Pilots H - Morgans Point	6 9 ↑	6 8 ↑	5 7 ↑	5 7 ↑	3 6 ↑	3 5 ↑	2 5 ↔	2 5 ↔	2 5 ↔	2 6 ↑	3 7 ↔	3 8 ↔	6 9 ↔	6 10 ↔	8 12 ↔	8 13 ↔	8 14 ↔	8 13 ↔	9 14 ↔	9 13 ↔	8 12 ↔	8 10 ↔	7 9 ↑	7 9 ↑	6 8 ↑
Houston Pilots G - 75/76	7 10 ↑	7 9 ↑	6 9 ↑	6 8 ↑	5 7 ↑	3 6 ↑	3 5 ↑	3 5 ↑	3 5 ↑	3 6 ↑	3 7 ↔	3 8 ↔	6 9 ↔	6 10 ↔	7 12 ↔	7 14 ↔	8 14 ↔	8 14 ↔	9 14 ↔	9 13 ↔	9 12 ↔	8 12 ↔	8 10 ↔	8 9 ↑	8 10 ↑
Houston Pilots F - 63/64	7 10 ↑	7 9 ↑	6 9 ↑	6 8 ↑	5 7 ↑	3 6 ↑	3 5 ↑	3 5 ↑	3 5 ↑	3 6 ↑	3 7 ↔	3 7 ↔	5 9 ↔	6 10 ↔	7 12 ↔	7 14 ↔	8 14 ↔	8 14 ↔	8 14 ↔	9 13 ↔	8 12 ↔	8 12 ↔	8 10 ↔	8 9 ↑	7 10 ↑
Houston Pilots E - 51/52	7 10 ↑	7 9 ↑	6 9 ↑	6 9 ↑	5 7 ↑	3 6 ↑	3 5 ↑	3 5 ↑	3 5 ↑	3 6 ↑	3 7 ↔	3 7 ↔	5 9 ↔	6 10 ↔	6 13 ↔	8 13 ↔	8 13 ↔	8 13 ↔	8 13 ↔	8 13 ↔	8 12 ↔	8 12 ↔	8 10 ↔	8 9 ↑	7 10 ↑
Houston Pilots D - 37/38	8 10 ↑	7 10 ↑	6 9 ↑	6 9 ↑	5 7 ↑	3 6 ↑	3 5 ↑	3 5 ↑	3 5 ↑	3 6 ↑	3 7 ↔	3 7 ↔	5 8 ↔	6 9 ↔	6 10 ↔	7 12 ↔	7 13 ↔	8 13 ↔	8 13 ↔	8 13 ↔	8 12 ↔	8 12 ↔	8 10 ↔	7 9 ↑	7 10 ↑
Houston Pilots C - 25/26	7 10 ↑	7 10 ↑	6 9 ↑	6 9 ↑	5 7 ↑	3 6 ↑	3 5 ↑	3 5 ↑	3 5 ↑	3 6 ↑	3 7 ↔	3 7 ↔	5 8 ↔	6 9 ↔	6 10 ↔	7 12 ↔	7 12 ↔	8 13 ↔	8 13 ↔	8 12 ↔	8 12 ↔	8 12 ↔	7 10 ↔	7 9 ↑	7 10 ↑
Houston Pilots B - 11/12	6 10 ↑	6 10 ↑	6 9 ↑	6 9 ↑	5 7 ↑	3 6 ↑	3 5 ↑	3 5 ↑	3 5 ↑	3 6 ↑	3 7 ↔	3 7 ↔	6 8 ↔	6 9 ↔	6 10 ↔	7 12 ↔	7 12 ↔	8 13 ↔	8 13 ↔	8 12 ↔	8 12 ↔	7 10 ↔	6 9 ↑	6 10 ↑	6 8 ↑
Houston Pilots A - 1 & 2 Bravo	8 12 ↑	8 12 ↑	7 10 ↑	7 10 ↑	6 8 ↑	5 7 ↑	3 6 ↑	3 6 ↑	3 6 ↑	3 7 ↔	3 7 ↔	3 7 ↔	5 8 ↔	6 9 ↔	6 10 ↔	7 12 ↔	7 12 ↔	8 13 ↔	8 12 ↔	8 12 ↔	8 12 ↔	8 12 ↔	8 12 ↔	8 12 ↔	8 12 ↔

NOTE: This is automated data that may/may not agree with the official BAM thinking that's found on the daily slides. This data should be used as a guide only.

Forecast Discussion

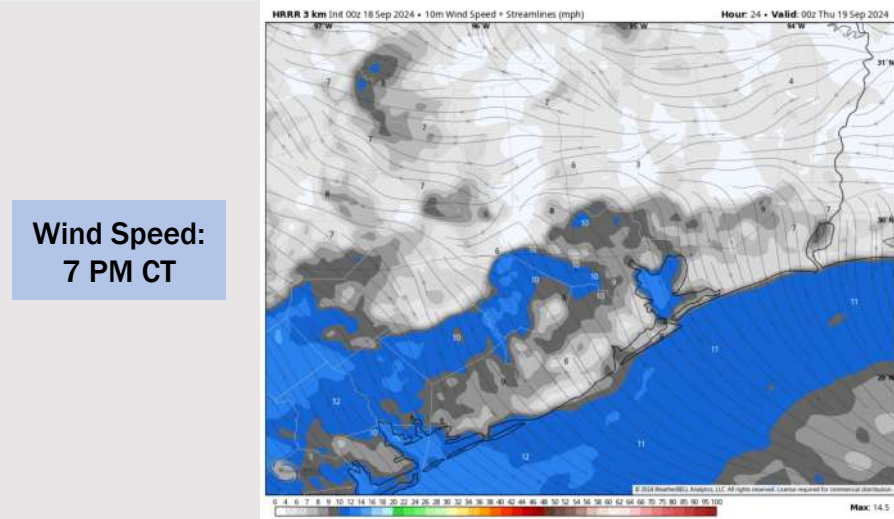
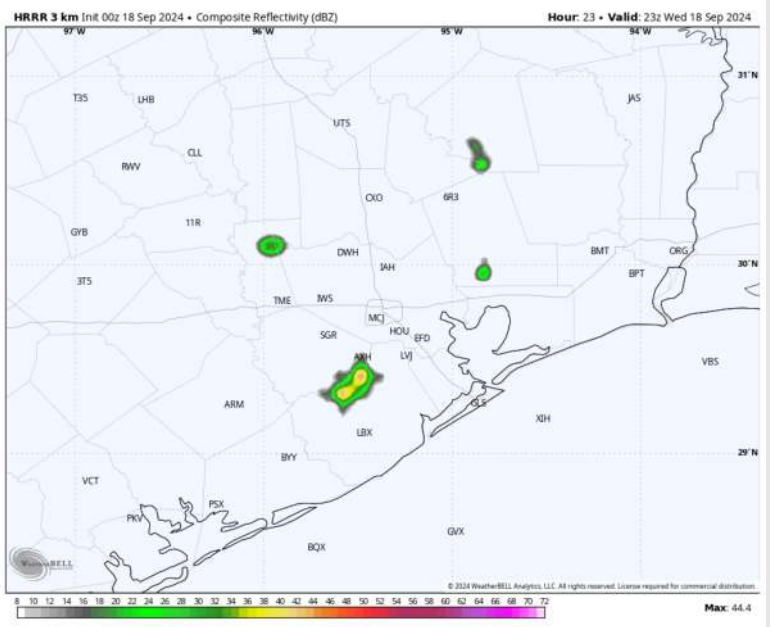
Precip: Favoring dry conditions for the remainder of the AM, with only a very low-end risk for an isolated shower between 4 – 8 PM.

Wind: Winds will be generally out of the SE today. **N of Morgan's Point:** Winds will be sustained at 3 - 8 kts throughout the day. **S of Morgan's Point:** Winds will be sustained at 5 - 10 kts throughout Wednesday.

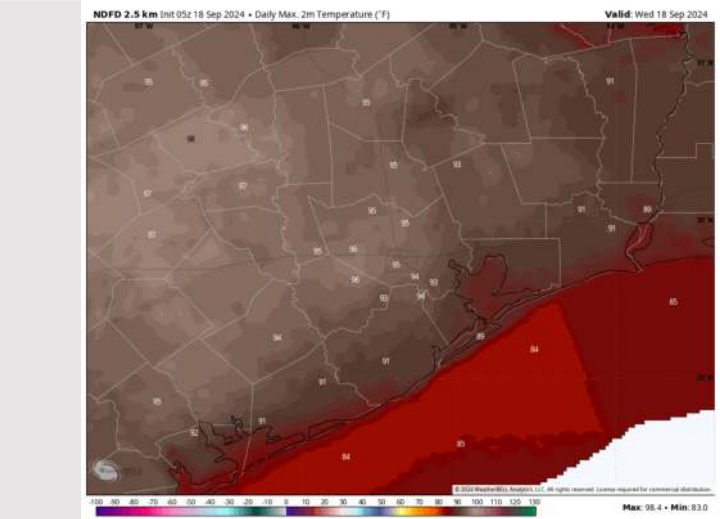
High Temps: **N of Morgan's Point:** Low 90s F. **S of Morgan's Point:** Mid 80s F

Visibility: No fog concerns expected for today.

Precip Image: 6 PM CT



Wind Speed:
7 PM CT



High Temps
Today

Houston Pilots: THU. 9/19/2024



Forecast Discussion

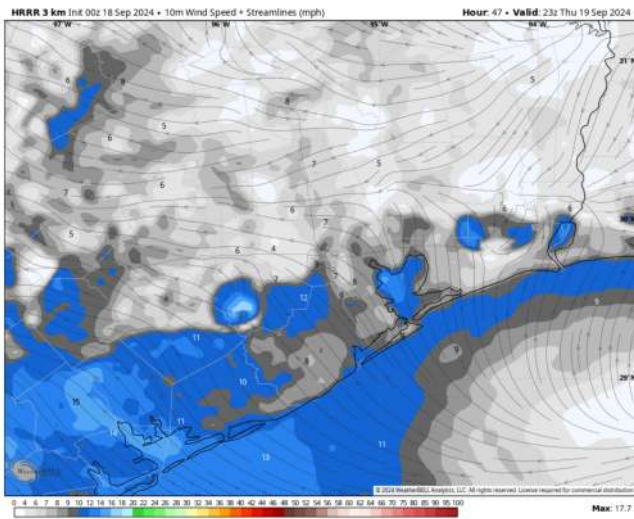
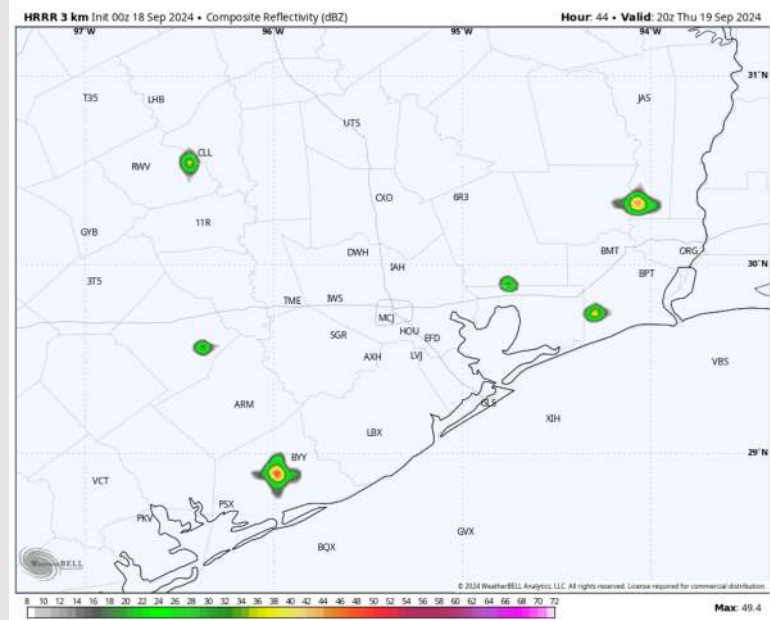
Precip: Favoring a 10% chance of pop-up downpours from 2PM - 7PM.

Wind: Winds will be variable in direction throughout Thursday AM, becoming fully out of the SE by 5PM. **N of Morgan's Point:** Winds at 2 - 7 kts throughout the day. **S of Morgan's Point:** Winds will be 5 - 10 kts throughout the day.

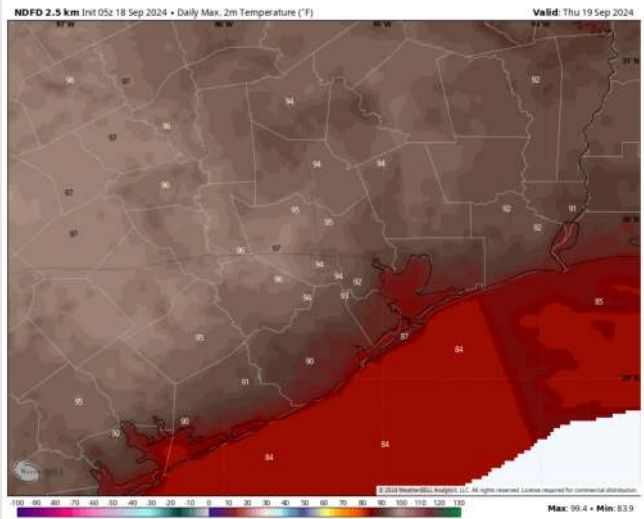
High Temps: **N of Morgan's Point:** Upper 80s F. **S of Morgan's Point:** Mid 80s F.

Visibility: No fog concerns expected for Thursday

Precip Image: 3 PM CT



Wind Speed
6 PM CT



High Temps
Thursday

Houston Pilots: FRI. 9/20/2024



Forecast Discussion

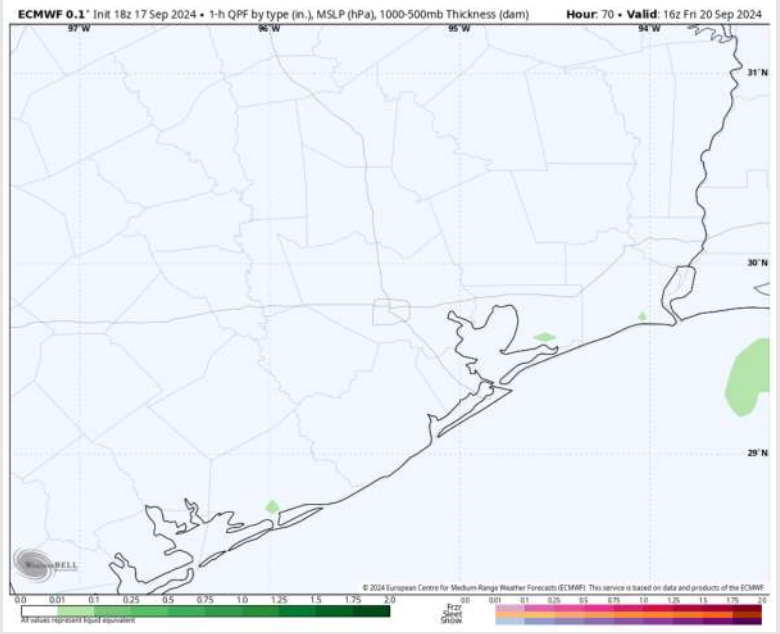
Precip: Dry conditions are favored for Friday, with only a few sprinkles S of Morgan's Point from 9 AM – 1 PM.

Wind: Winds will be variable in direction through 9 PM, settling out of the S after that time. **N of Morgan's Point:** Winds will be at 2-7 kts throughout the day. **S of Morgan's Point:** Winds will be at 4 - 8 kts throughout the day.

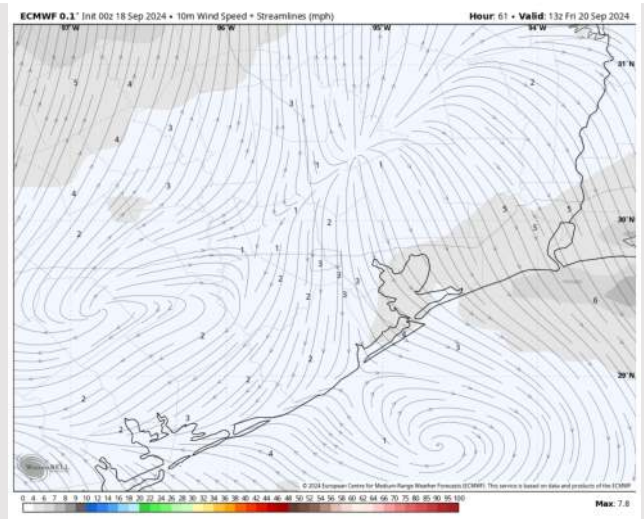
Low Temps: **N of Morgan's Point:** Upper 80s F. **S of Morgan's Point:** Mid 80s F.

Visibility: No fog favored for Friday.

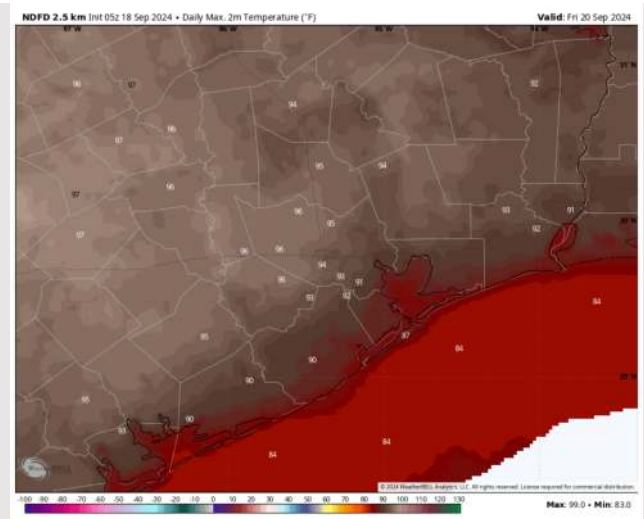
Precip Image: 11 AM CT



Wind Speed:
8 AM CT



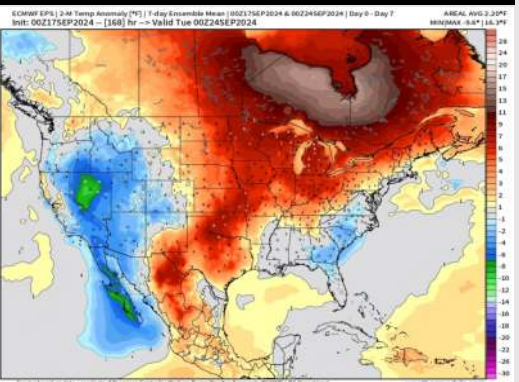
High Temps
Friday



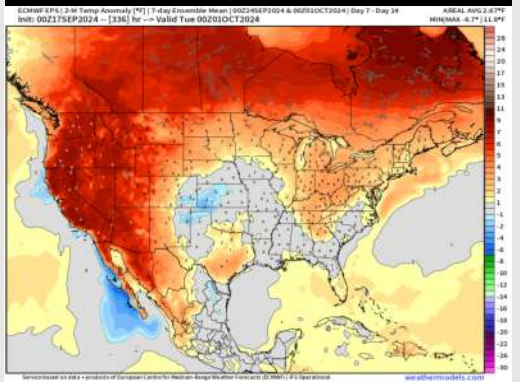
Houston Pilots: 9/18/24



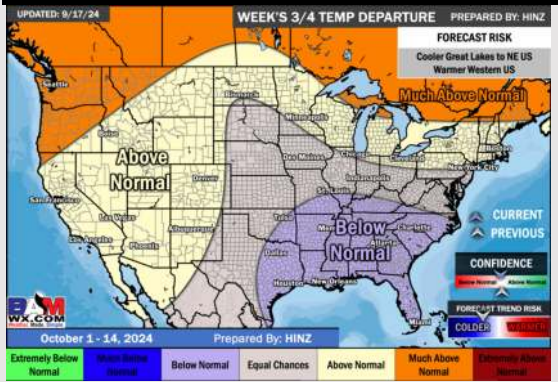
Next 7 Day Temperature Departure



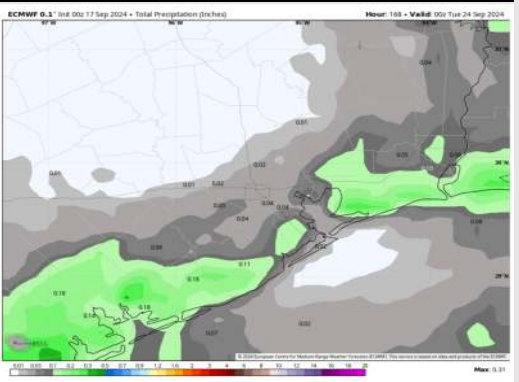
8-14 Day Temperature Departure



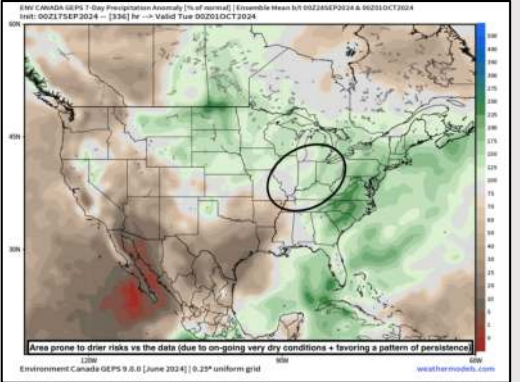
15-30 Day Temperature Departure



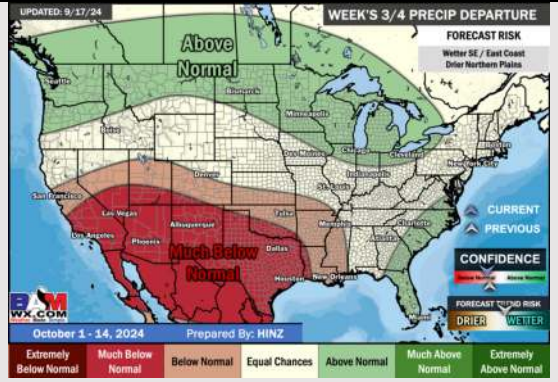
Next 7 Day Total Precipitation



8-14 Day % of Average Precip.



15-30 Day % of Average Precip.



- Temps are expected to be above normal for the week 1 timeframe. Favoring mostly dry conditions for the week 1 timeframe with a few isolated showers possible moving into the weekend.
- Slightly above normal temperatures are favored for week 2 with below normal rain chances.
- Below normal temperatures and much below normal precipitation chances are expected for the weeks ¾ timeframe.