

# Houston Pilots Forecast Package



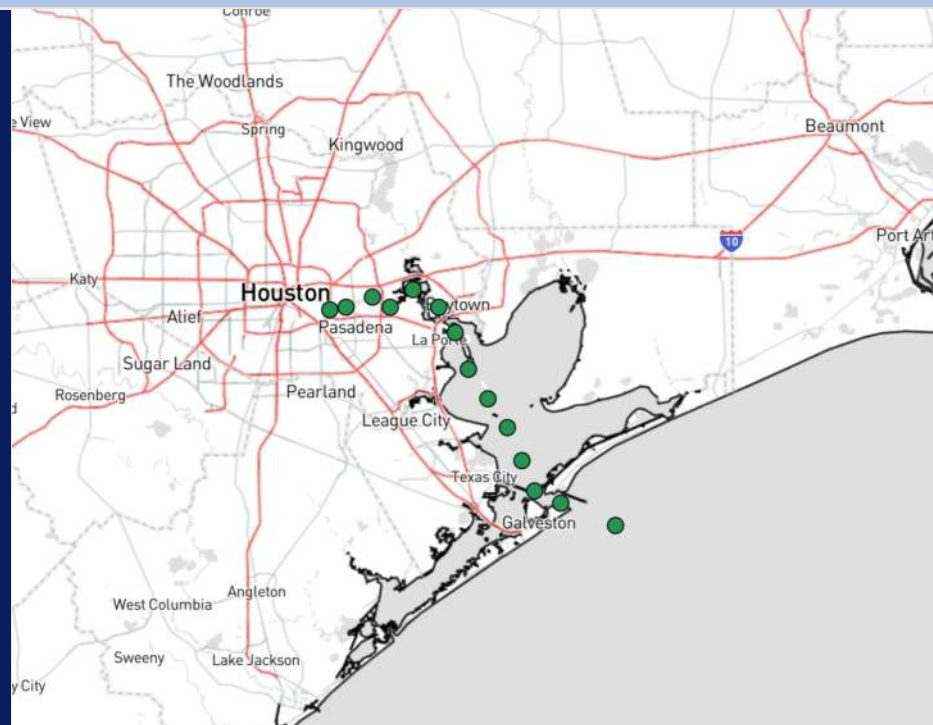
Updated: 12:00 AM CT

Tuesday, September 17, 2024

Forecaster: John Kemper

## Weather Headlines

- Favoring mostly dry conditions over the next 72 hours.
- Sustained winds will be generally calmer over the next few days and are not expected to exceed 10 kts.
- No fog/tropical concerns.



Current Radar: 11:45 PM CT



As always, please do not hesitate to reach out to us with any forecast questions via the chat option on Clarity or our on-call number, **(317)-560-8122** press **1** for forecast questions.

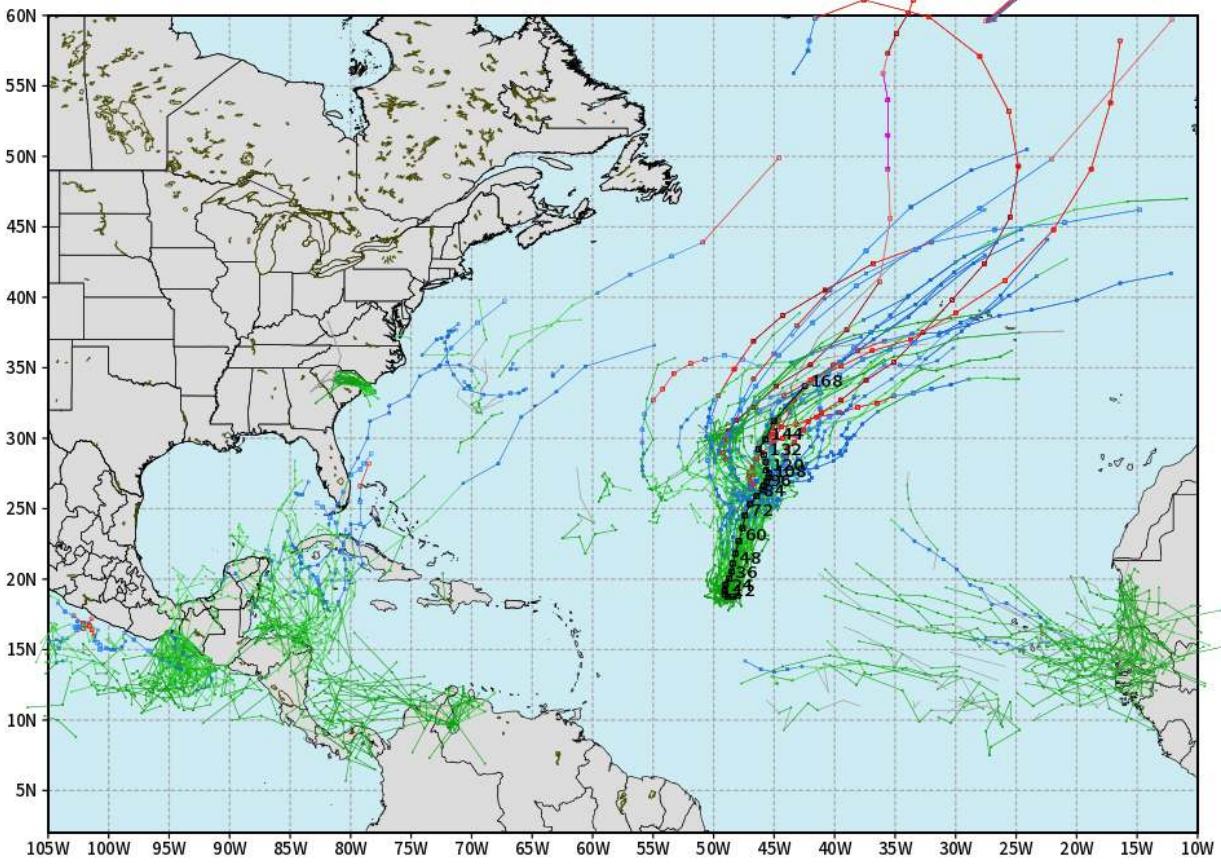
# Houston Pilots Tropical Update



## European Model Next 10 Days - Tropical Tracks

ECMWF ATLANTIC EPS Cyclone Locations --> Next [10-days]  
INIT: 12Z16SEP2024 --> UNTIL 12Z26SEP2024

- o-o ENSEMBLE MEAN
- o-o 1000 - 1010 hPa
- o-o 980 - 999 hPa
- o-o 960 - 979 hPa
- o-o 950 - 959 hPa
- o-o < 950 hPa



weathermodels.com

Gordon will intensify into a Tropical Storm once again as it pushes northeast, with no landfall impacts favored.

Additional tropical development is possible in the Atlantic Ocean / Caribbean within the next 10 days. Currently, we are not favoring any direct impacts to HOU.

# Houston Pilots Visibility Chart (miles)



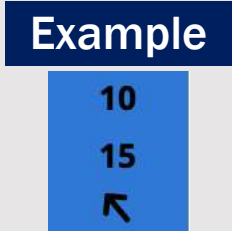
## Forecast Confidence



Visibility	Tue 12 am	Tue 1 am	Tue 2 am	Tue 3 am	Tue 4 am	Tue 5 am	Tue 6 am	Tue 7 am	Tue 8 am	Tue 9 am	Tue 10 am	Tue 11 am	Tue 12 pm	Tue 1 pm	Tue 2 pm	Tue 3 pm	Tue 4 pm	Tue 5 pm	Tue 6 pm	Tue 7 pm	Tue 8 pm	Tue 9 pm	Tue 10 pm	Tue 11 pm
Houston Pilots N - 610 Bridge	10	10	10	10	10	10	10	10	10	10	10	10	10	10	10	10	10	10	10	10	10	10	10	10
Houston Pilots M - Kinder 1	10	10	10	10	10	10	10	10	10	10	10	10	10	10	10	10	10	10	10	10	10	10	10	10
Houston Pilots L - Greens Bayou	10	10	10	10	10	10	10	10	10	10	10	10	10	10	10	10	10	10	10	10	10	10	10	10
Houston Pilots K - Shell Crude	10	10	10	10	10	10	10	10	10	10	10	10	10	10	10	10	10	10	10	10	10	10	10	10
Houston Pilots J - Lynchburg Ferries	10	10	10	10	10	10	10	10	10	10	10	10	10	10	10	10	10	10	10	10	10	10	10	10
Houston Pilots I - Exxon 3	10	10	10	10	10	10	10	10	10	10	10	10	10	10	10	10	10	10	10	10	10	10	10	10
Houston Pilots H - Morgans Point	10	10	10	10	10	10	10	10	10	10	10	10	10	10	10	10	10	10	10	10	10	10	10	10
Houston Pilots G - 75/76	10	10	10	10	10	10	10	10	10	7.9	10	10	10	10	10	10	10	10	10	10	10	10	10	9
Houston Pilots F - 63/64	10	10	10	10	10	10	10	10	10	7.9	10	10	10	10	10	10	10	10	10	10	10	10	10	9
Houston Pilots E - 51/52	10	10	10	10	10	10	10	10	10	6.9	10	10	10	10	10	10	10	10	10	10	10	10	10	10
Houston Pilots D - 37/38	10	10	10	10	10	10	10	10	10	6.9	10	10	10	10	10	10	10	10	10	10	10	10	10	10
Houston Pilots C - 25/26	10	10	10	10	10	10	10	10	10	6.9	10	10	10	10	10	10	10	10	10	10	10	10	10	10
Houston Pilots B - 11/12	10	10	10	10	10	10	10	10	10	6.9	10	10	10	10	10	10	10	10	10	10	10	10	10	10
Houston Pilots A - 1 & 2 Bravo	10	10	10	10	10	10	10	10	10	7.9	10	10	10	10	10	10	10	10	10	10	10	10	10	10

**NOTE: This is automated data that may/may not agree with the official BAM thinking that's found on the daily slides or special visibility report slides. This data should be used as a guide only**

# Houston Pilots Wind Chart



Wind	Tue 12 am	Tue 1 am	Tue 2 am	Tue 3 am	Tue 4 am	Tue 5 am	Tue 6 am	Tue 7 am	Tue 8 am	Tue 9 am	Tue 10 am	Tue 11 am	Tue 12 pm	Tue 1 pm	Tue 2 pm	Tue 3 pm	Tue 4 pm	Tue 5 pm	Tue 6 pm	Tue 7 pm	Tue 8 pm	Tue 9 pm	Tue 10 pm	Tue 11 pm
Houston Pilots N - 610 Bridge	2 ↑	1 ←	1 ↖	1 ↖	1 ↖	1 ↖	1 ←	1 ←	1 ←	1 ←	1 ←	1 →	2 ↓	2 ↓	3 ↓	3 ↓	3 ↖	3 ↖	5 ↖	6 ↖	6 ↖	6 ↖	5 ↖	3 ↖
Houston Pilots M - Kinder 1	2 ↑	1 ←	1 ↖	1 ↖	1 ↖	1 ↖	1 ←	1 ←	1 ←	1 ←	1 ←	1 →	2 ↓	2 ↓	3 ↓	3 ↓	3 ↖	3 ↖	5 ↖	5 ↖	6 ↖	5 ↖	5 ↖	3 ↖
Houston Pilots L - Greens Bayou	1 ↖	1 ←	1 ↖	1 ↖	1 ↖	1 ↖	1 ←	1 ←	1 ←	1 ←	1 ←	1 →	2 ↓	2 ↓	3 ↓	3 ↓	3 ↖	3 ↖	5 ↖	5 ↖	6 ↖	6 ↖	5 ↖	3 ↖
Houston Pilots K - Shell Crude	1 ↑	1 ←	1 ↖	1 ↖	1 ↖	1 ↖	1 ←	1 ←	1 ←	1 ←	1 ←	1 →	2 ↓	2 ↓	3 ↓	3 ↓	3 ↖	3 ↖	5 ↖	5 ↖	5 ↖	6 ↖	5 ↖	3 ↖
Houston Pilots J - Lynchburg Ferries	1 ↖	1 ←	1 ↖	1 ↖	1 ↖	1 ↖	1 ←	1 ←	1 ←	1 ←	1 ←	1 →	1 ↓	2 ↓	2 ↓	3 ↓	3 ↖	3 ↖	5 ↖	5 ↖	6 ↖	6 ↖	5 ↖	3 ↖
Houston Pilots I - Exxon 3	3 ↑	3 ↖	3 ↖	3 ↖	3 ↖	3 ↖	3 ↓	3 ↓	3 ↓	3 ↓	2 ↓	2 ↓	2 ↓	3 ↓	3 ↓	5 ↖	6 ↖	7 ↖	7 ↖	8 ↖	8 ↖	8 ↖	7 ↖	7 ↖
Houston Pilots H - Morgans Point	3 ↑	3 ↖	3 ↖	3 ↖	3 ↖	3 ↖	3 ↓	3 ↓	3 ↓	3 ↓	2 ↓	2 ↓	2 ↓	3 ↓	3 ↓	5 ↖	6 ↖	6 ↖	7 ↖	8 ↖	8 ↖	8 ↖	7 ↖	7 ↖
Houston Pilots G - 75/76	5 ↑	5 ↖	5 ↖	3 ↖	3 ↖	3 ↖	3 ↖	3 ↖	3 ↖	3 ↖	3 ↖	3 ↖	2 ↓	3 ↓	3 ↓	5 ↖	6 ↖	6 ↖	7 ↖	8 ↖	8 ↖	8 ↖	8 ↖	8 ↖
Houston Pilots F - 63/64	5 ↑	5 ↖	5 ↖	3 ↖	3 ↖	3 ↖	3 ↖	3 ↖	3 ↖	3 ↖	3 ↖	3 ↖	2 ↓	2 ↓	3 ↓	3 ↖	5 ↖	6 ↖	7 ↖	8 ↖	8 ↖	8 ↖	8 ↖	8 ↖
Houston Pilots E - 51/52	5 ↑	5 ↖	3 ↖	3 ↖	3 ↖	3 ↖	3 ↖	3 ↖	3 ↖	3 ↖	3 ↖	3 ↖	2 ↓	2 ↓	3 ↓	3 ↖	5 ↖	6 ↖	7 ↖	8 ↖	8 ↖	8 ↖	8 ↖	8 ↖
Houston Pilots D - 37/38	5 ↑	5 ↖	3 ↖	3 ↖	3 ↖	3 ↖	3 ↖	3 ↖	3 ↖	3 ↖	3 ↖	3 ↖	2 ↓	3 ↓	3 ↓	3 ↖	5 ↖	6 ↖	6 ↖	7 ↖	8 ↖	8 ↖	8 ↖	8 ↖
Houston Pilots C - 25/26	5 ↑	3 ↖	3 ↖	3 ↖	3 ↖	3 ↖	3 ↖	3 ↖	3 ↖	3 ↖	3 ↖	3 ↖	3 ↖	3 ↖	3 ↖	3 ↖	5 ↖	6 ↖	6 ↖	7 ↖	8 ↖	8 ↖	7 ↖	7 ↖
Houston Pilots B - 11/12	3 ↑	3 ↖	3 ↖	3 ↖	3 ↖	3 ↖	3 ↖	3 ↖	3 ↖	3 ↖	3 ↖	3 ↖	3 ↖	3 ↖	3 ↖	3 ↖	5 ↖	6 ↖	6 ↖	6 ↖	6 ↖	7 ↖	6 ↖	6 ↖
Houston Pilots A - 1 & 2 Bravo	5 ↑	5 ↖	3 ↖	3 ↖	3 ↖	3 ↖	3 ↖	3 ↖	3 ↖	3 ↖	3 ↖	3 ↖	3 ↖	3 ↖	3 ↖	3 ↖	3 ↖	5 ↖	6 ↖	6 ↖	6 ↖	7 ↖	7 ↖	8 ↖

**NOTE: This is automated data that may/may not agree with the official BAM thinking that's found on the daily slides. This data should be used as a guide only.**

## Forecast Discussion

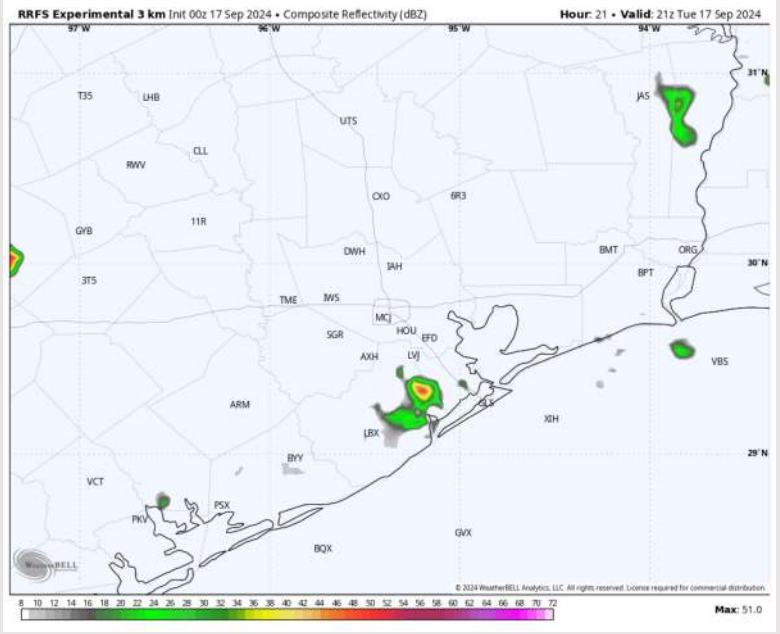
**Precip:** Dry conditions are favored for this morning. A few isolated showers/downpours are possible from 4 PM to 8 PM for Stations N of the Boarding Station.

**Wind:** Winds will be variable in direction through 3 PM, settling out of the S after that time. **N of Morgan's Point:** Winds will be at 2-7 kts throughout the day. **S of Morgan's Point:** Winds will be at 4 - 9 kts throughout the day.

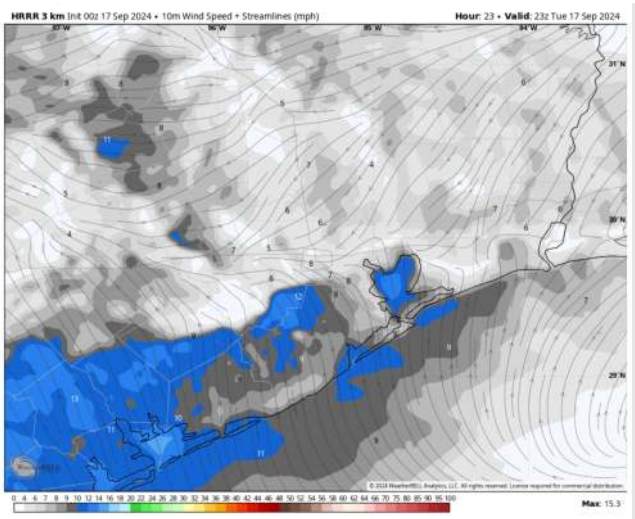
**High Temps:** **N of Morgan's Point:** Low 90s F. **S of Morgan's Point:** Mid 80s F.

**Visibility:** A few areas of isolated fog in play for locations W of Houston. No impacts for any stations.

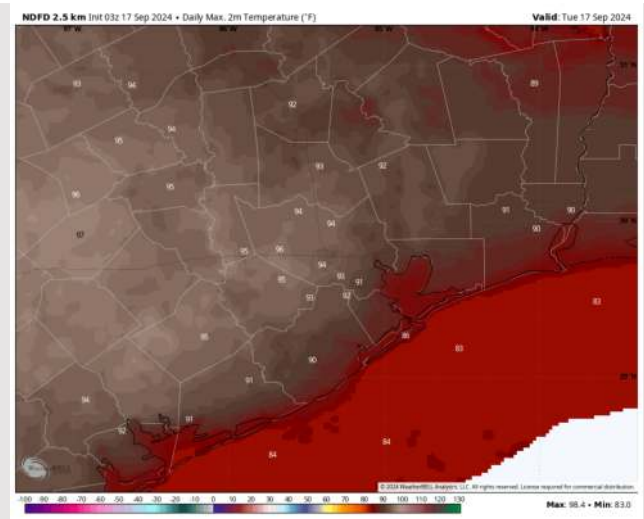
## Precip Image: 7 PM CT



Wind Speed:  
6 PM CT



High Temps  
Today



# Houston Pilots: WED. 9/18/2024



## Forecast Discussion

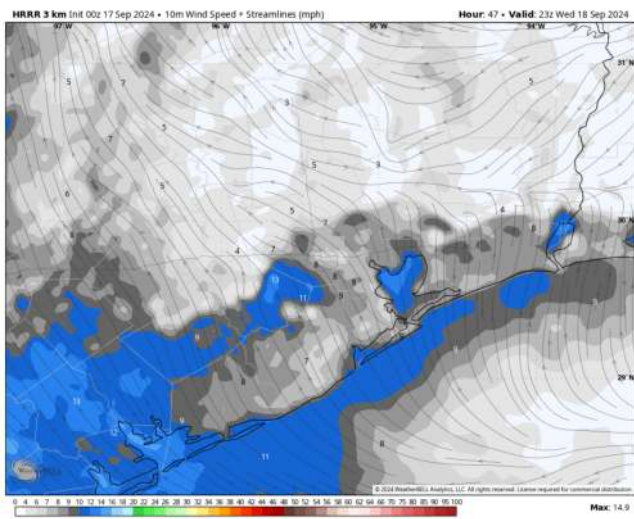
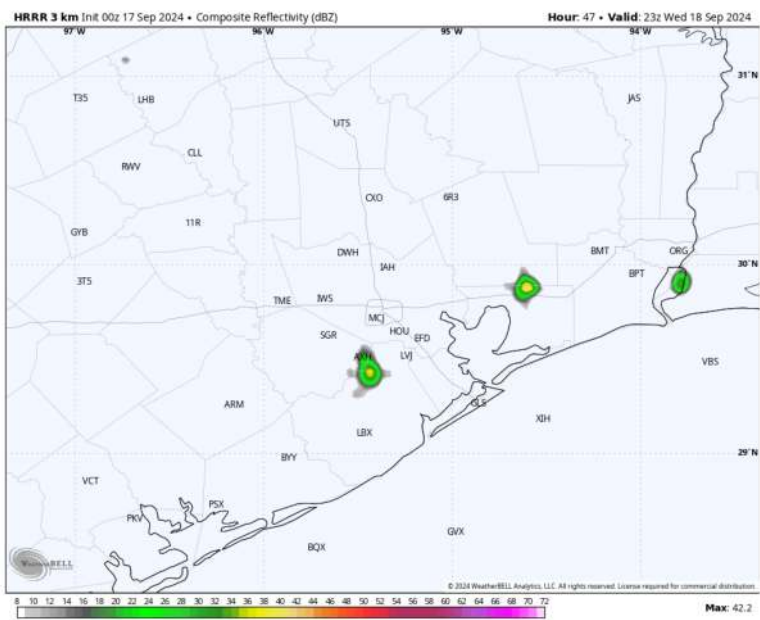
**Precip:** Favoring dry conditions Wednesday AM overall, with only a very low-end risk for an isolated shower between 4 – 8 PM.

**Wind:** Winds will be generally out of the S through Wednesday. **N of Morgan's Point:** Winds will be sustained at 3 - 8 kts throughout the day Wednesday. **S of Morgan's Point:** Winds will be sustained at 5-10 kts throughout Wednesday.

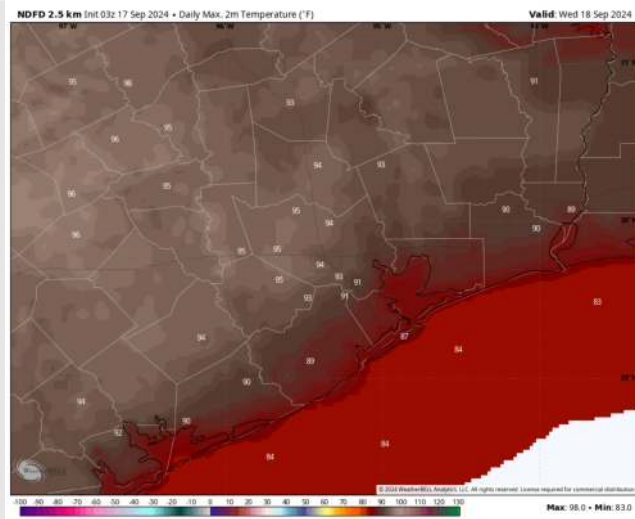
**High Temps:** **N of Morgan's Point:** Low 90s F. **S of Morgan's Point:** Mid 80s F

**Visibility:** No fog concerns expected for Wednesday.

## Precip Image: 6 PM CT



Wind Speed:  
6 PM CT



High Temps  
Wednesday

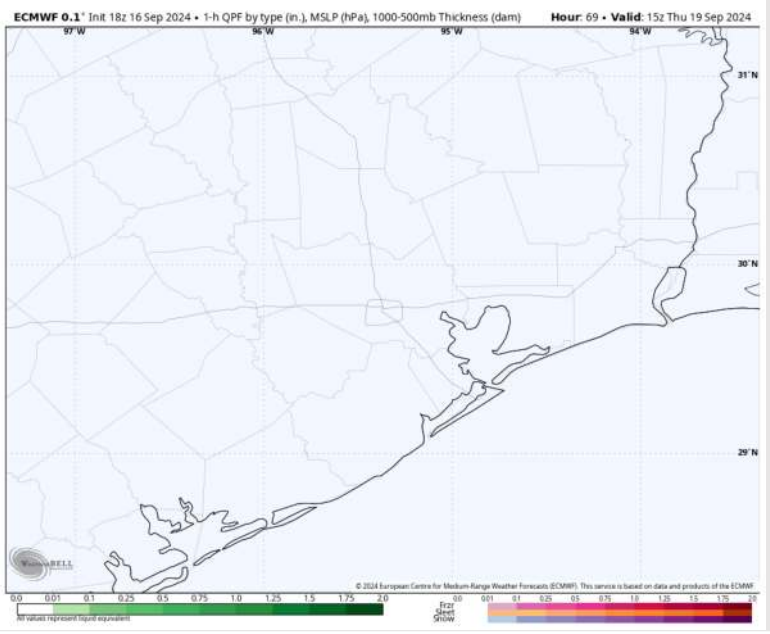
# Houston Pilots: THU. 9/19/2024



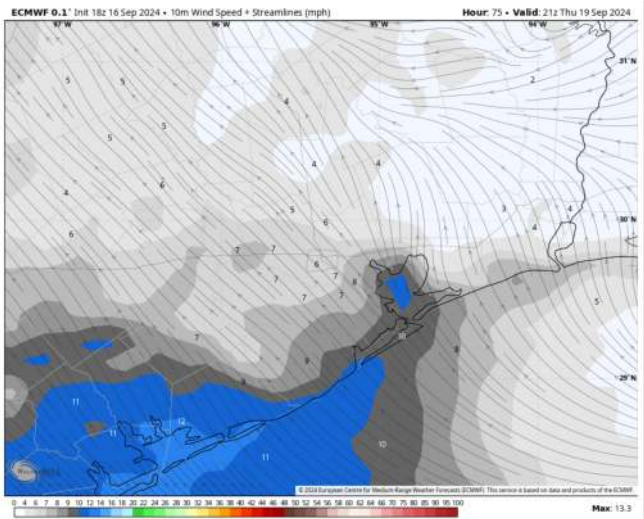
## Forecast Discussion

- Precip:** Favoring dry conditions for Thursday
- Wind:** Winds will be variable in direction throughout Thursday AM, becoming fully out of the SE by 1PM. **N of Morgan's Point:** Winds at 2 - 7 kts throughout the day. **S of Morgan's Point:** Winds will be 5 - 10 kts throughout the day.
- High Temps:** **N of Morgan's Point:** Upper 80s F. **S of Morgan's Point:** Mid 80s F.
- Visibility:** No fog concerns expected for Thursday

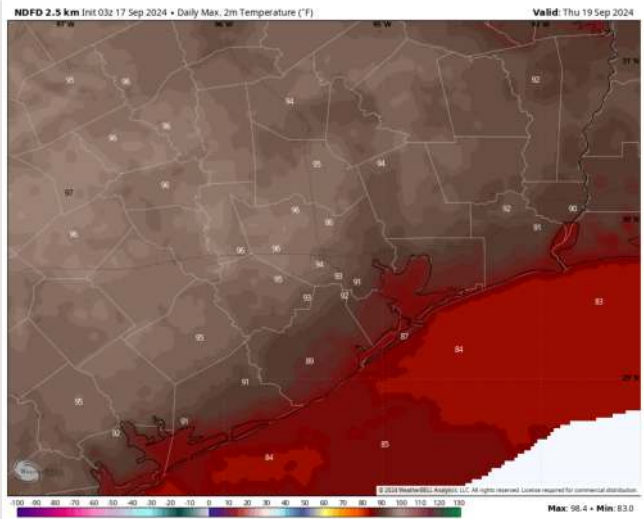
## Precip Image: 10 AM CT



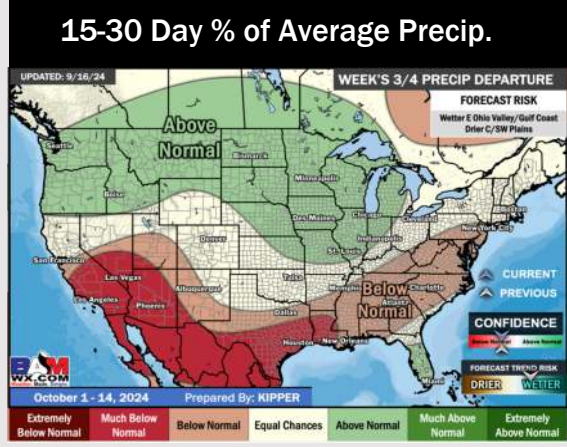
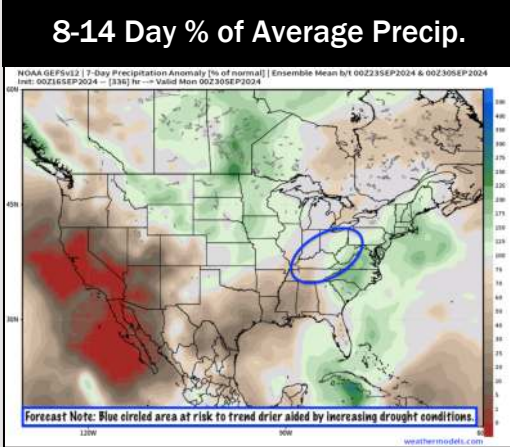
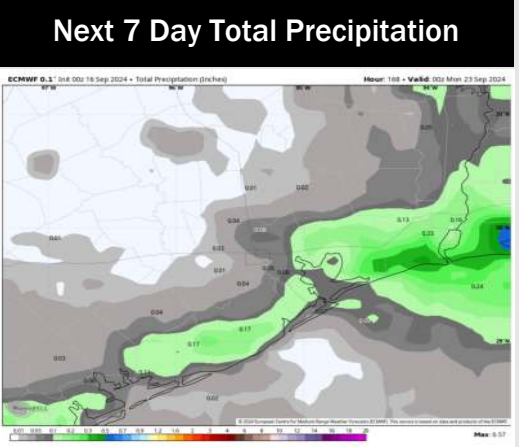
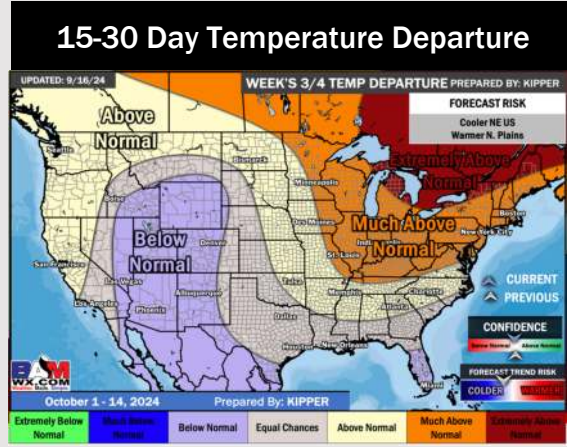
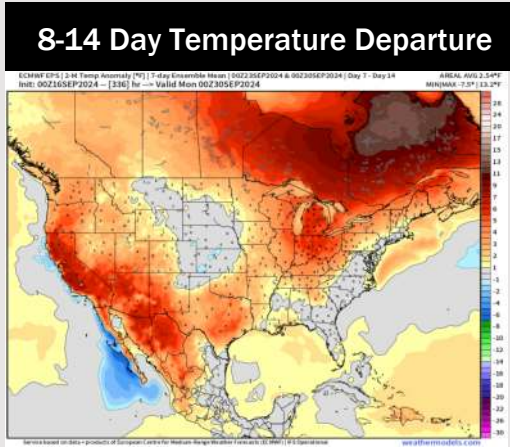
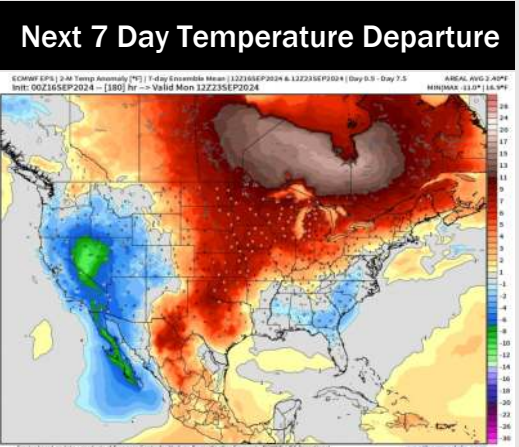
## Wind Speed 4 PM CT



## High Temps Thursday



# Houston Pilots: 9/17/24



- Temps are expected to be above normal for the week 1 timeframe. Favoring mostly dry conditions for the week 1 timeframe with a few isolated showers possibly TUE and WED.
- Slightly above normal temperatures are favored for week 2 with below normal rain chances.
- Near normal temperatures and much below normal precipitation chances are expected for the weeks ¾ timeframe.