

# Houston Pilots Forecast Package



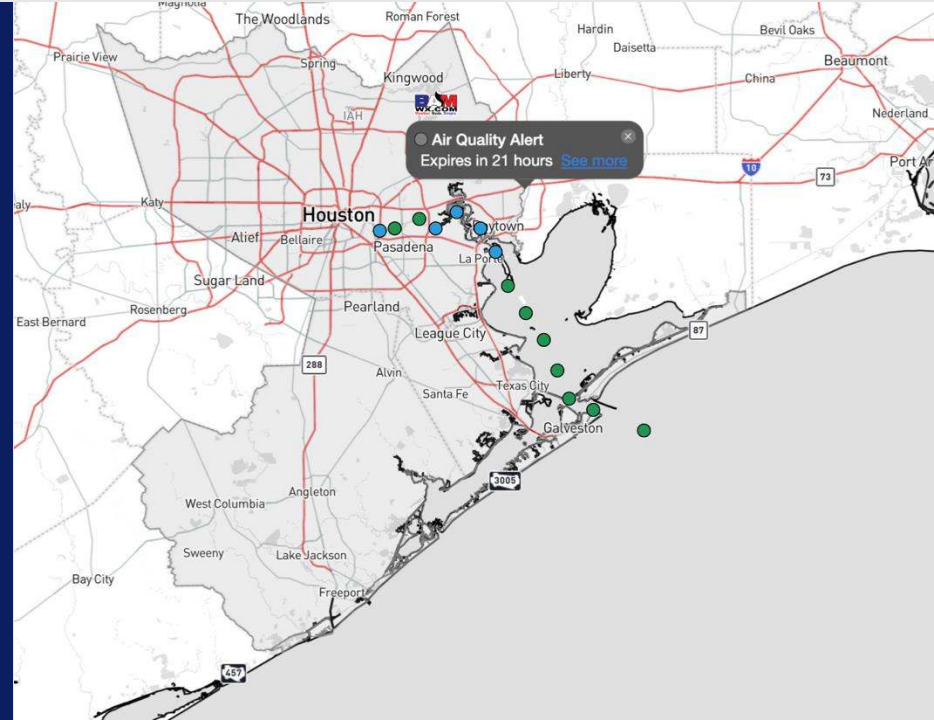
Updated: 10:00 PM CT

Saturday, September 14, 2024

Forecaster: Xander Lowry

## Weather Headlines

- Dry conditions are favored over the next 72 hours for all Stations.
- Sustained winds will be generally calmer over the next few days, not expected to exceed 12 kts.
- **Monitoring low-end fog potential N of Morgan's Point this morning (visibilities of 1 mile or less not favored).**



Current Radar: 10:00 PM CT



As always, please do not hesitate to reach out to us with any forecast questions via the chat option on Clarity or our on-call number, **(317)-560-8122** press 1 for forecast questions.

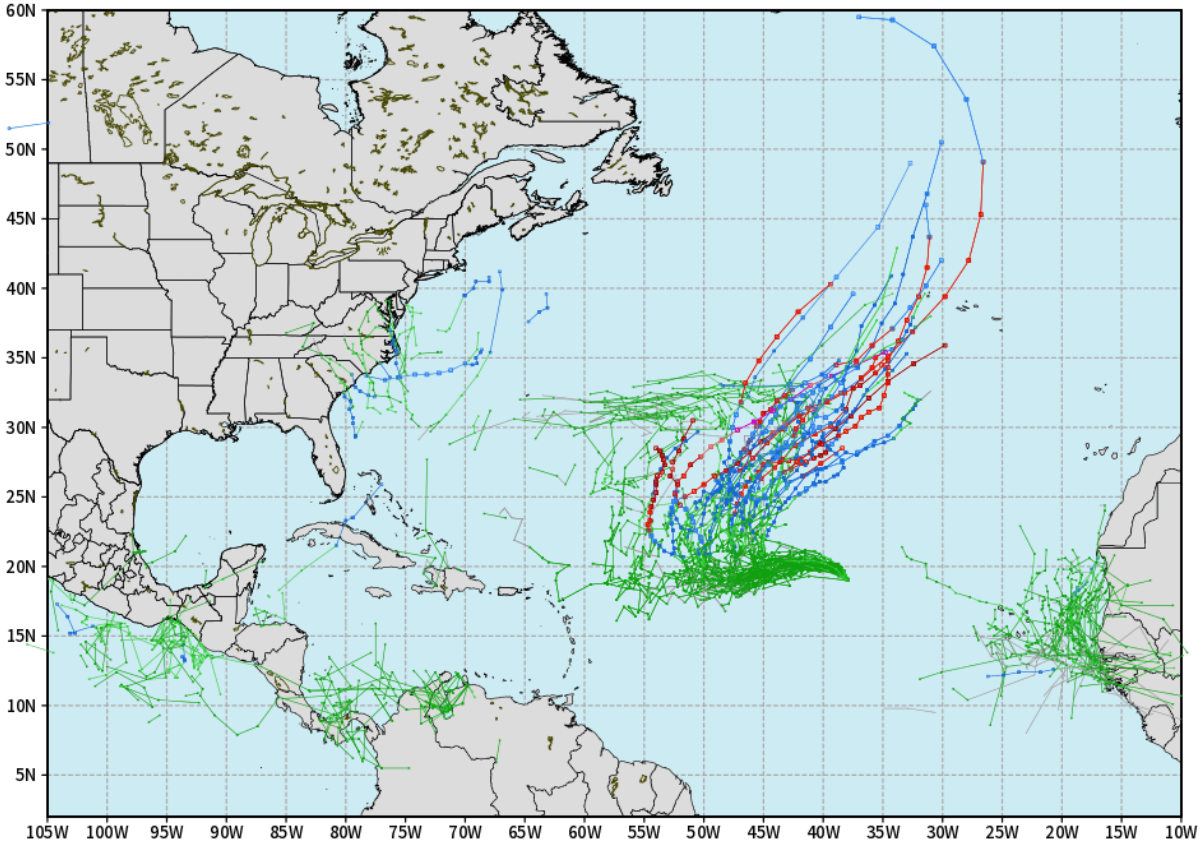
# Houston Pilots Tropical Update



## European Model Next 10 Days - Tropical Tracks

ECMWF ATLANTIC EPS Cyclone Locations --> Next [10-days]  
INIT: 12Z13SEP2024 --> UNTIL 12Z23SEP2024

- o-o ENSEMBLE MEAN
- o-o 1000 - 1010 hPa
- o-o 980 - 999 hPa
- o-o 960 - 979 hPa
- o-o 950 - 959 hPa
- o-o < 950 hPa



[weathermodels.com](http://weathermodels.com)

Tropical development is possible in the Atlantic Ocean within the next 10 days. Currently, we are not favoring any impacts to HOU.

# Houston Pilots Visibility Chart (miles)



## Forecast Confidence



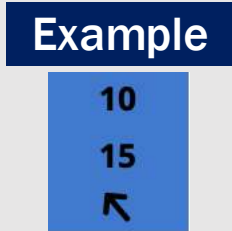
Visibility	Fri 11 pm	Sat 12 am	Sat 1 am	Sat 2 am	Sat 3 am	Sat 4 am	Sat 5 am	Sat 6 am	Sat 7 am	Sat 8 am	Sat 9 am	Sat 10 am	Sat 11 am	Sat 12 pm	Sat 1 pm	Sat 2 pm	Sat 3 pm	Sat 4 pm	Sat 5 pm	Sat 6 pm	Sat 7 pm	Sat 8 pm	Sat 9 pm	Sat 10 pm	
Houston Pilots N - 610 Bridge	10	10	10	10	10	10	10	10	7.9	6.9	5.9	10	10	10	10	10	10	10	10	10	10	10	10	10	
Houston Pilots M - Kinder 1	10	10	10	10	10	10	10	10	7.9	6.9	5.9	10	10	10	10	10	10	10	10	10	10	10	10	10	
Houston Pilots L - Greens Bayou	10	10	10	10	10	10	10	7.9	6.9	6.9	5.9	10	10	10	10	10	10	10	10	10	10	10	10	10	
Houston Pilots K - Shell Crude	10	10	10	10	10	10	10	7.9	7.9	6.9	5.9	10	10	10	10	10	10	10	10	10	10	10	10	10	
Houston Pilots J - Lynchburg Ferries	10	10	10	10	10	10	10	7.9	6.9	6.9	5.9	9	10	10	10	10	10	10	10	10	10	10	10	10	
Houston Pilots I - Exxon 3	10	10	10	10	10	10	10	7.9	7.9	6.9	5.9	9	10	10	10	10	10	10	10	10	10	10	10	10	
Houston Pilots H - Morgans Point	10	10	10	10	10	10	10	9	9	6.9	5.9	10	10	10	10	10	10	10	10	10	10	10	10	10	
Houston Pilots G - 75/76	10	10	10	10	10	10	10	10	10	9	6.9	10	10	10	10	10	10	10	10	10	10	10	10	9	9
Houston Pilots F - 63/64	10	10	10	10	10	10	10	10	10	9	6.9	10	10	10	10	10	10	10	10	10	10	10	10	9	9
Houston Pilots E - 51/52	10	10	10	10	10	10	10	10	10	9	6.9	10	10	10	10	10	10	10	10	10	10	10	10	9	9
Houston Pilots D - 37/38	10	10	10	10	10	10	10	10	10	9	6.9	10	10	10	10	10	10	10	10	10	10	10	10	9	9
Houston Pilots C - 25/26	10	10	10	10	10	10	10	10	10	9	6.9	10	10	10	10	10	10	10	10	10	10	10	10	9	9
Houston Pilots B - 11/12	10	10	10	10	10	10	10	10	10	10	6.9	10	10	10	10	10	10	10	10	10	10	10	10	10	10
Houston Pilots A - 1 & 2 Bravo	10	10	10	10	10	10	10	10	10	10	9	10	10	10	10	10	10	10	10	10	10	10	10	10	10

**NOTE: This is automated data that may/may not agree with the official BAM thinking that's found on the daily slides or special visibility report slides. This data should be used as a guide only**

# Houston Pilots Wind Chart



Sustained wind 10 Knots  
 Gusts 15 Knots  
 Wind from the SE



Wind	Fri 11 pm	Sat 12 am	Sat 1 am	Sat 2 am	Sat 3 am	Sat 4 am	Sat 5 am	Sat 6 am	Sat 7 am	Sat 8 am	Sat 9 am	Sat 10 am	Sat 11 am	Sat 12 pm	Sat 1 pm	Sat 2 pm	Sat 3 pm	Sat 4 pm	Sat 5 pm	Sat 6 pm	Sat 7 pm	Sat 8 pm	Sat 9 pm	Sat 10 pm
Houston Pilots N - 610 Bridge	6 12 ↑	6 12 ↑	6 12 ↑	6 13 ↑	6 12 ↑	6 12 ↑	6 12 ↑	5 12 ↑	5 10 ↑	5 9 ↑	5 9 ↑	5 10 ↑	6 12 ↑	6 12 ↑	6 12 ↑	5 10 ↑	5 10 ↑	5 10 ↑	6 10 ↑	6 10 ↑	6 10 ↑	6 10 ↑	6 10 ↑	6 10 ↑
Houston Pilots M - Kinder 1	6 12 ↑	6 12 ↑	6 12 ↑	6 13 ↑	6 12 ↑	6 12 ↑	6 12 ↑	5 10 ↑	5 10 ↑	5 9 ↑	5 9 ↑	5 10 ↑	6 12 ↑	6 12 ↑	6 12 ↑	5 10 ↑	5 10 ↑	6 10 ↑	6 10 ↑	6 10 ↑	6 10 ↑	6 10 ↑	6 10 ↑	6 10 ↑
Houston Pilots L - Greens Bayou	5 10 ↑	5 12 ↑	5 12 ↑	6 12 ↑	5 12 ↑	5 12 ↑	5 12 ↑	5 10 ↑	3 10 ↑	3 9 ↑	3 9 ↑	5 10 ↑	5 12 ↑	6 12 ↑	5 10 ↑	5 10 ↑	5 10 ↑	6 10 ↑	6 12 ↑	6 10 ↑	6 10 ↑	6 10 ↑	6 10 ↑	5 10 ↑
Houston Pilots K - Shell Crude	5 10 ↑	5 10 ↑	5 12 ↑	6 12 ↑	5 12 ↑	5 12 ↑	5 12 ↑	5 10 ↑	3 10 ↑	3 9 ↑	3 9 ↑	5 12 ↑	5 10 ↑	5 10 ↑	5 10 ↑	5 10 ↑	6 10 ↑	6 10 ↑	6 12 ↑	6 10 ↑	6 10 ↑	6 10 ↑	6 10 ↑	5 10 ↑
Houston Pilots J - Lynchburg Ferries	5 10 ↑	5 10 ↑	5 10 ↑	5 12 ↑	5 10 ↑	5 10 ↑	5 12 ↑	3 10 ↑	3 9 ↑	3 9 ↑	3 9 ↑	3 12 ↑	5 10 ↑	5 10 ↑	5 9 ↑	5 10 ↑	5 10 ↑	6 10 ↑	6 12 ↑	6 10 ↑	6 10 ↑	6 10 ↑	6 10 ↑	5 10 ↑
Houston Pilots I - Exxon 3	9 13 ↑	9 14 ↑	9 14 ↑	9 14 ↑	9 14 ↑	9 14 ↑	8 14 ↑	8 13 ↑	8 13 ↑	7 12 ↑	7 10 ↑	7 10 ↑	7 12 ↑	6 12 ↑	6 12 ↑	6 12 ↑	7 13 ↑	8 13 ↑	8 13 ↑	8 13 ↑	8 13 ↑	8 13 ↑	8 13 ↑	8 13 ↑
Houston Pilots H - Morgans Point	8 13 ↑	8 13 ↑	8 13 ↑	9 14 ↑	8 14 ↑	8 14 ↑	8 14 ↑	8 13 ↑	8 12 ↑	7 12 ↑	7 10 ↑	6 10 ↑	6 12 ↑	6 12 ↑	6 12 ↑	6 12 ↑	7 12 ↑	8 13 ↑	8 13 ↑	8 13 ↑	8 13 ↑	8 13 ↑	8 13 ↑	8 13 ↑
Houston Pilots G - 75/76	10 14 ↑	10 14 ↑	10 15 ↑	10 15 ↑	10 15 ↑	10 15 ↑	10 15 ↑	9 15 ↑	9 14 ↑	8 14 ↑	8 13 ↑	8 13 ↑	7 13 ↑	6 12 ↑	6 12 ↑	6 10 ↑	7 13 ↑	8 13 ↑	8 14 ↑	8 14 ↑	9 15 ↑	9 14 ↑	9 14 ↑	10 14 ↑
Houston Pilots F - 63/64	9 14 ↑	9 14 ↑	10 15 ↑	10 15 ↑	10 15 ↑	10 15 ↑	10 15 ↑	9 15 ↑	9 14 ↑	8 14 ↑	8 13 ↑	8 13 ↑	7 13 ↑	6 12 ↑	6 10 ↑	6 10 ↑	6 12 ↑	7 13 ↑	8 13 ↑	8 14 ↑	9 15 ↑	9 14 ↑	9 14 ↑	9 14 ↑
Houston Pilots E - 51/52	9 14 ↑	9 14 ↑	9 14 ↑	10 15 ↑	10 15 ↑	10 15 ↑	10 15 ↑	9 15 ↑	9 14 ↑	8 13 ↑	8 12 ↑	7 13 ↑	7 12 ↑	6 12 ↑	6 10 ↑	6 10 ↑	6 12 ↑	7 13 ↑	8 14 ↑	8 14 ↑	9 15 ↑	9 14 ↑	9 14 ↑	9 14 ↑
Houston Pilots D - 37/38	9 14 ↑	9 14 ↑	9 14 ↑	10 15 ↑	10 15 ↑	10 15 ↑	10 15 ↑	9 15 ↑	9 14 ↑	8 13 ↑	8 13 ↑	7 13 ↑	7 12 ↑	6 12 ↑	6 10 ↑	6 10 ↑	6 12 ↑	7 13 ↑	8 14 ↑	8 14 ↑	9 15 ↑	9 14 ↑	9 14 ↑	9 14 ↑
Houston Pilots C - 25/26	8 14 ↑	8 14 ↑	9 14 ↑	9 15 ↑	9 15 ↑	9 15 ↑	10 15 ↑	9 15 ↑	9 15 ↑	8 14 ↑	8 13 ↑	8 13 ↑	7 13 ↑	7 12 ↑	6 12 ↑	6 12 ↑	7 12 ↑	8 13 ↑	8 13 ↑	8 14 ↑	9 14 ↑	9 14 ↑	9 14 ↑	9 14 ↑
Houston Pilots B - 11/12	7 13 ↑	8 13 ↑	8 14 ↑	8 14 ↑	8 15 ↑	8 15 ↑	8 15 ↑	8 15 ↑	8 14 ↑	8 13 ↑	8 13 ↑	7 13 ↑	7 13 ↑	7 12 ↑	7 12 ↑	7 12 ↑	7 13 ↑	8 13 ↑	8 13 ↑	8 14 ↑	8 14 ↑	8 13 ↑	8 13 ↑	8 13 ↑
Houston Pilots A - 1 & 2 Bravo	8 14 ↑	9 14 ↑	9 15 ↑	10 15 ↑	10 15 ↑	10 16 ↑	10 16 ↑	10 16 ↑	10 16 ↑	10 15 ↑	9 15 ↑	8 15 ↑	8 13 ↑	8 13 ↑	7 12 ↑	7 12 ↑	7 13 ↑	8 13 ↑	8 13 ↑	8 14 ↑	8 14 ↑	9 14 ↑	9 14 ↑	9 14 ↑

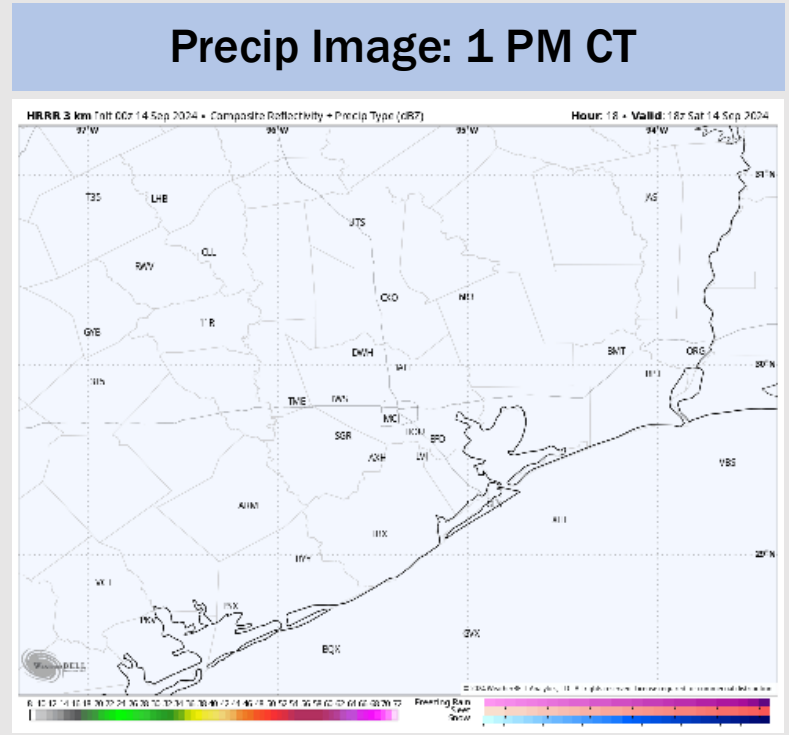
**NOTE: This is automated data that may/may not agree with the official BAM thinking that's found on the daily slides. This data should be used as a guide only.**



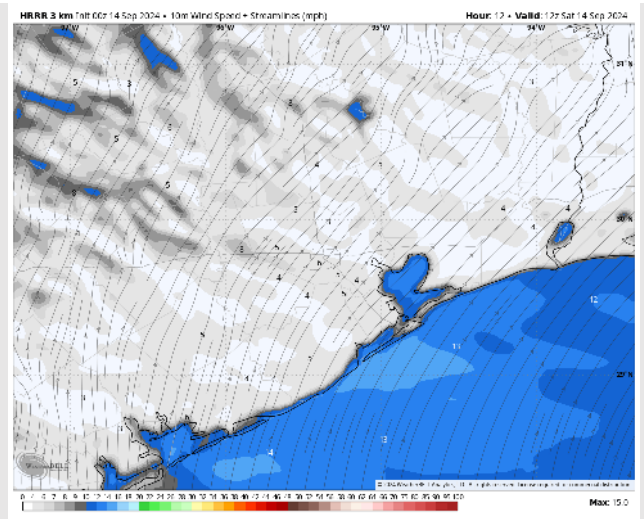
# Houston Pilots: SAT. 9/14/2024

## Forecast Discussion

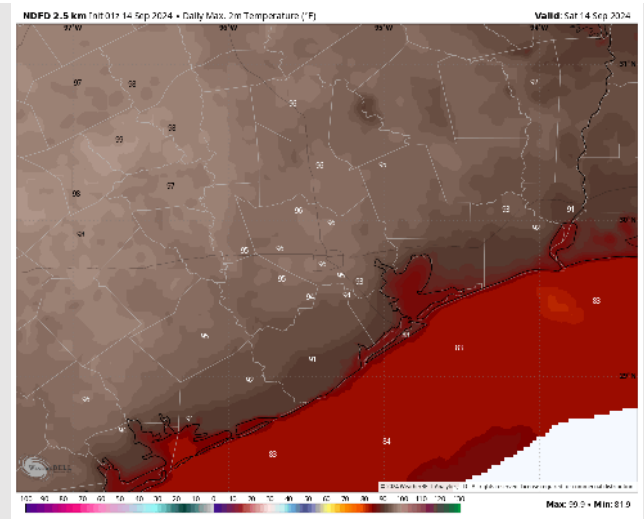
- Precip:** Favoring dry conditions for today with any late PM rain expected to remain north of all stations.
- Wind:** Winds will be out of the S/SW throughout the day. **N of Morgan's Point:** Winds will be at 3-7 kts throughout the day. **S of Morgan's Point:** Winds will be at 8-13 kts through 3PM before decreasing to 4 – 9 kts throughout the rest of the day.
- High Temps:** **N of Morgan's Point:** Mid 90s F. **S of Morgan's Point:** Mid to upper 80s F.
- Visibility:** Monitor a low-end threat of isolated pockets of fog for stations N of Morgan's Point (2-3 miles) between 1AM – 7AM.



Wind Speed:  
7 AM CT



High Temps  
Today



# Houston Pilots: SUN. 9/15/2024



## Forecast Discussion

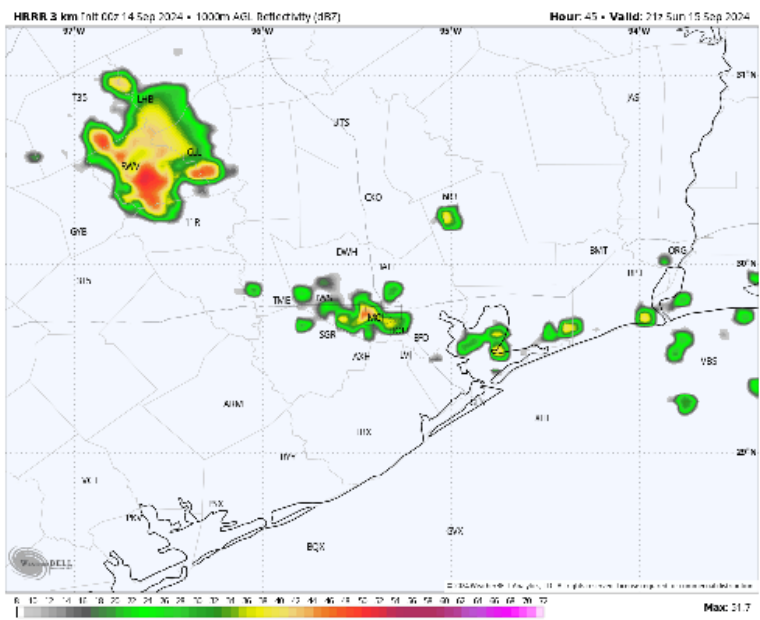
**Precip:** Favoring dry conditions through the morning SUN with scattered showers and storms working through starting at 3PM and lasting through 6PM. Favoring dry conditions after 6PM. Risks will be for strong wind gusts of 25-30 kts and lightning.

**Wind:** Winds will be generally out of the SW throughout the day Sunday with periods of variable winds. **N of Morgan's Point:** Winds will be sustained at 3-8 kts throughout Sunday. **S of Morgan's Point:** Winds will be sustained at 4-9 kts throughout the day.

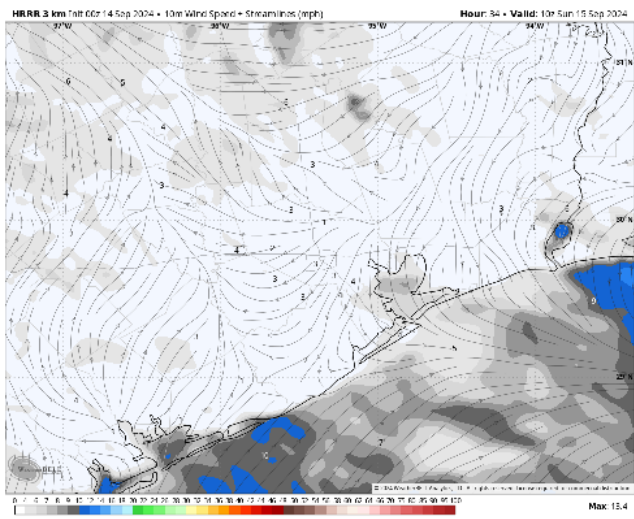
**High Temps:** **N of Morgan's Point:** Mid/Low 90s F. **S of Morgan's Point:** Upper 80s F

**Visibility:** No fog concerns expected for Sunday.

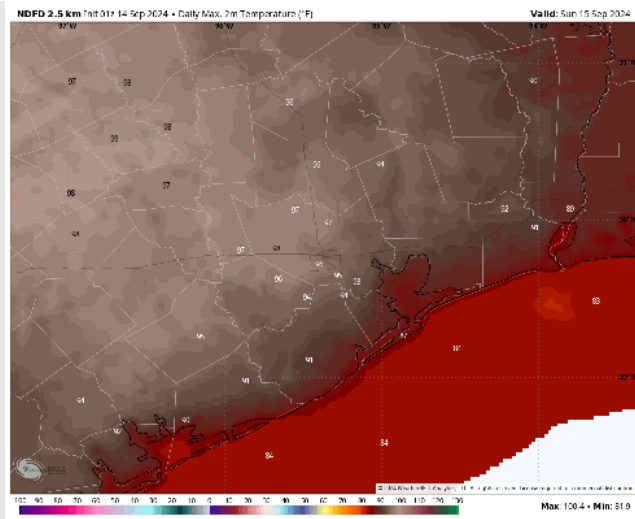
## Precip Image: 6 PM CT



Wind Speed:  
5 AM CT



High Temps  
Sunday



# Houston Pilots: MON. 9/16/2024



## Forecast Discussion

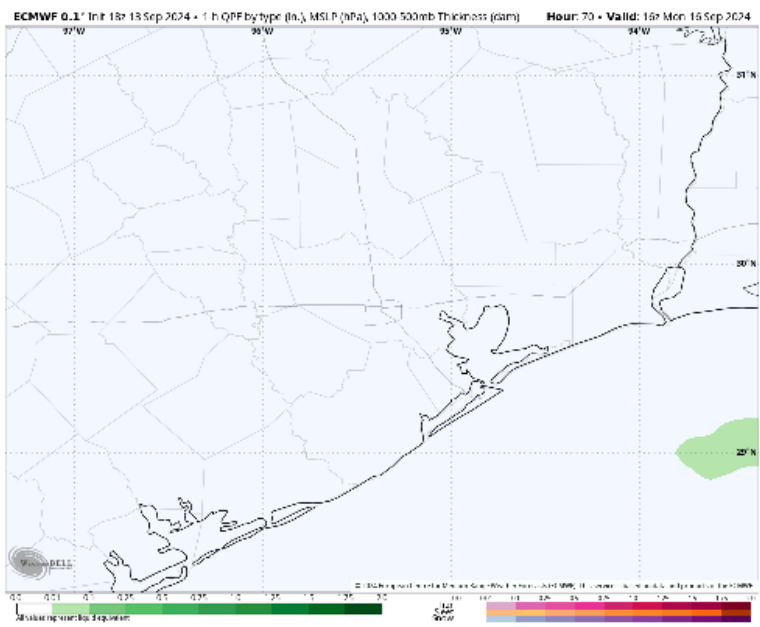
**Precip:** Favoring dry conditions throughout the day Monday.

**Wind:** Winds will generally be out of the S/SW throughout the day on Monday. **N of Morgan's Point:** Winds at 2-6 kts the rest of the day. **S of Morgan's Point:** Winds will be 3-8 kts throughout the day.

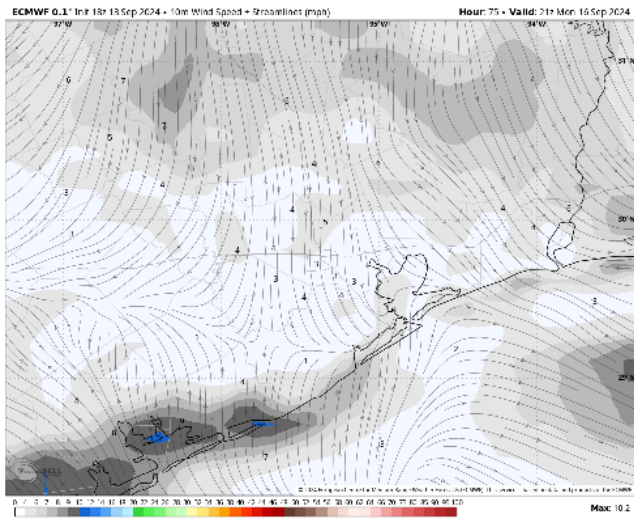
**High Temps:** **N of Morgan's Point:** Mid 90s F. **S of Morgan's Point:** Mid 80s F.

**Visibility:** No fog concerns expected for Monday.

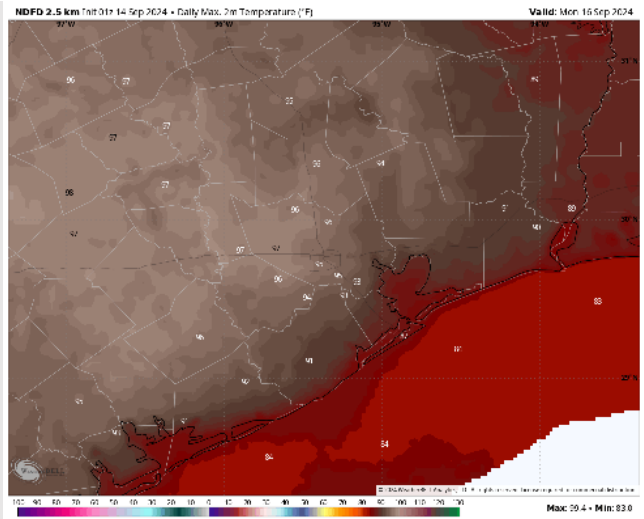
## Precip Image: 11 AM CT



Wind Speed  
4 PM CT

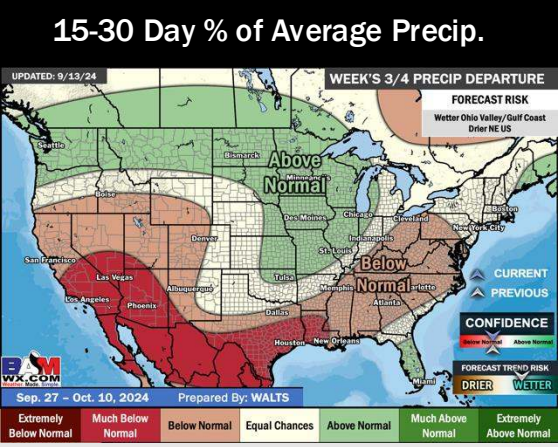
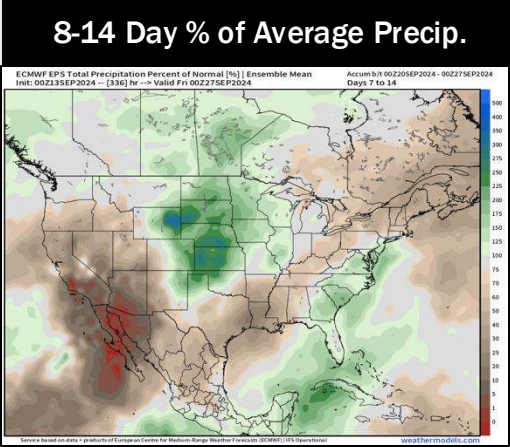
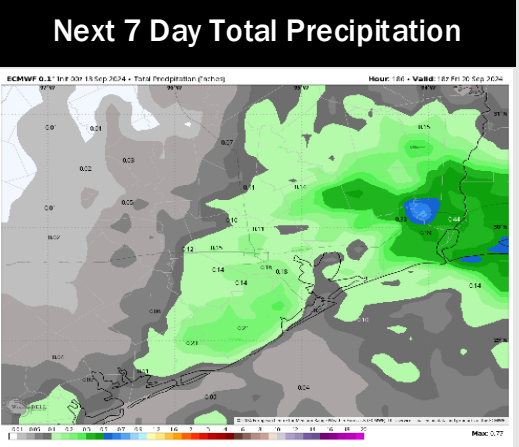
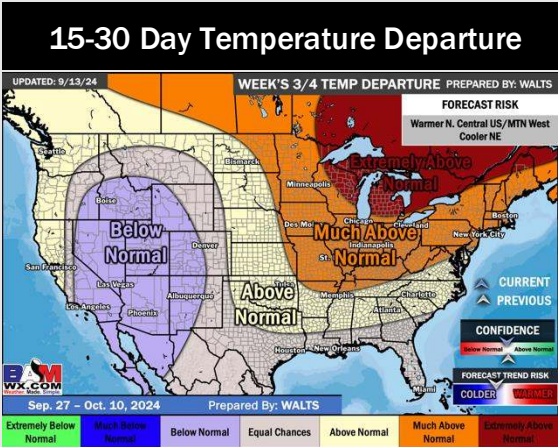
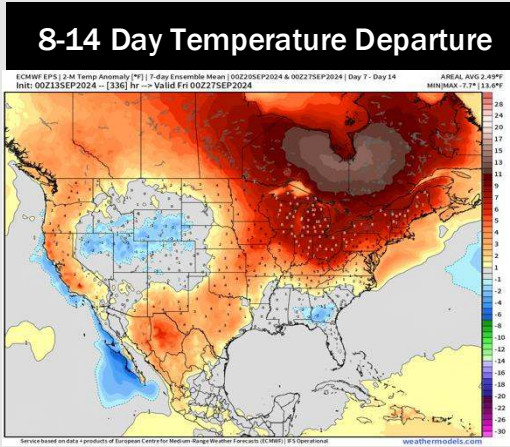
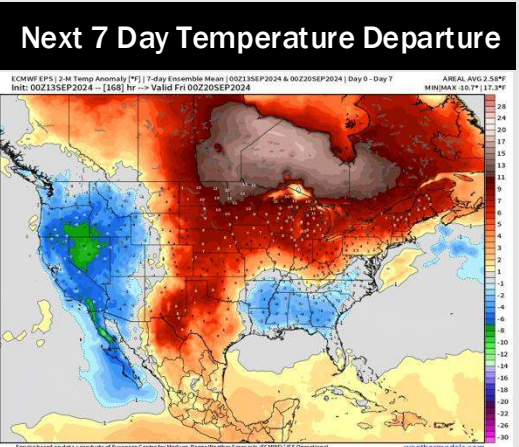


High Temps  
Monday





# Houston Pilots: 9/14/24



- Temps are expected to be near normal for the week 1 timeframe. Favoring mostly dry conditions for the week 1 timeframe with a few isolated showers towards the middle/end of next week.
- Slightly above normal temperatures are favored for week 2 with below normal rain chances.
- Near normal temperatures and much below normal precipitation chances are expected for the weeks 3/4 timeframe.