

Houston Pilots Forecast Package



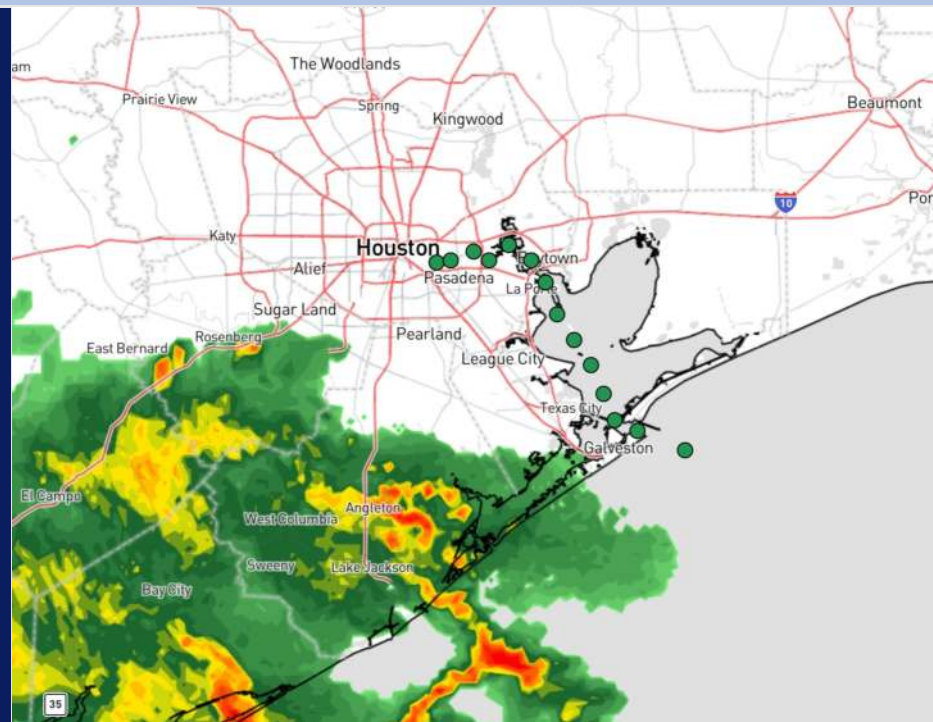
Updated: 1:15 PM CT

Tuesday, September 3, 2024

Forecaster: Alyssa Elliott

Weather Headlines

- Frequent periods of downpours / storms in play through the week, with **~30 - 40 kt gusts possible within WED storms.**
- Monitoring a tropical wave as it works through the Caribbean. Check tropical slides for more info.
- Not favoring any fog risks over the next few days.



Current Radar: 12:30 PM CT



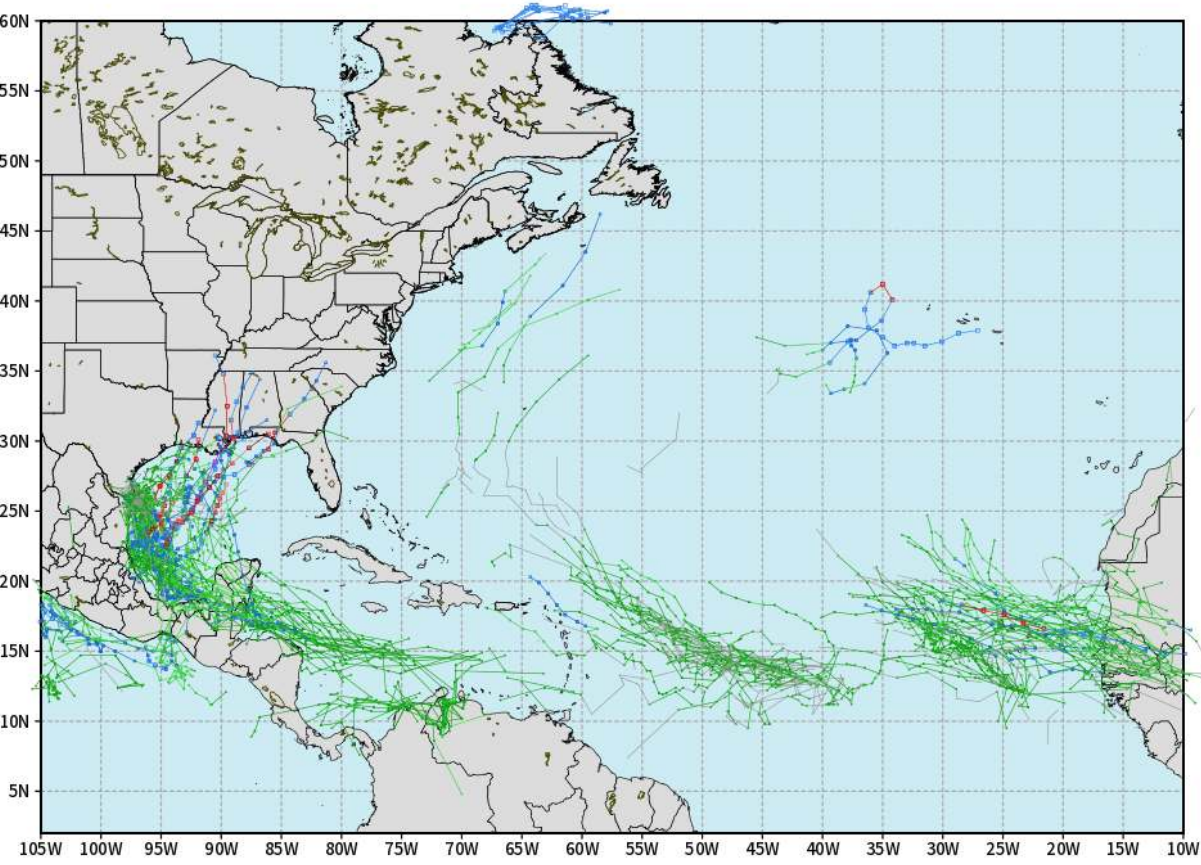
As always, please do not hesitate to reach out to us with any forecast questions via the chat option on Clarity or our on-call number, **(317)-560-8122** press **1** for forecast questions.

Houston Pilots Tropical Update

European Model Next 10 Days - Tropical Tracks

ECMWF ATLANTIC EPS Cyclone Locations --> Next [10-days]
INIT: 00Z03SEP2024 --> UNTIL 00Z13SEP2024

o-o ENSEMBLE MEAN
o-o 1000 - 1010 hPa
o-o 980 - 999 hPa
o-o 960 - 979 hPa
o-o 950 - 959 hPa
o-o < 950 hPa



weathermodels.com

Monitoring a broad area of low pressure off the SE TX Coast as it works slowly northward. Further development remains unlikely.

Favoring a Tropical System (Disturbance 1) to continue to work through the E Caribbean. Continued development looks possible however not super favorable towards the end of the week. We are keeping a close eye on this system for possible low end impacts in the Gulf.

Houston Pilots Visibility Chart (miles)



Forecast Confidence



Visibility	Tue 3 pm	Tue 4 pm	Tue 5 pm	Tue 6 pm	Tue 7 pm	Tue 8 pm	Tue 9 pm	Tue 10 pm	Tue 11 pm	Wed 12 am	Wed 1 am	Wed 2 am	Wed 3 am	Wed 4 am	Wed 5 am	Wed 6 am	Wed 7 am	Wed 8 am	Wed 9 am	Wed 10 am	Wed 11 am	Wed 12 pm	Wed 1 pm	Wed 2 pm
Houston Pilots N - 610 Bridge	10.1	10.1	10.1	10.1	10.1	10.1	10.1	10.1	10.1	10.1	10.1	10.1	10.1	10.1	10.1	10.1	10.1	10.1	7.9	7.9	7.9	7.9	9	8
Houston Pilots M - Kinder 1	10.1	10.1	10.1	10.1	10.1	10.1	10.1	10.1	10.1	10.1	10.1	10.1	10.1	10.1	10.1	10.1	10.1	10.1	7.9	7.9	7.9	7.9	9	6.9
Houston Pilots L - Greens Bayou	10.1	10.1	10.1	10.1	10.1	10.1	10.1	10.1	10.1	10.1	10.1	10.1	10.1	10.1	10.1	10.1	10.1	10.1	7.9	7.9	7.9	7.9	9	8
Houston Pilots K - Shell Crude	10.1	10.1	10.1	10.1	10.1	10.1	10.1	10.1	10.1	10.1	10.1	10.1	10.1	10.1	10.1	10.1	10.1	10.1	7.9	7.9	7.9	7.9	9	6.9
Houston Pilots J - Lynchburg Ferries	10.1	10.1	10.1	10.1	10.1	10.1	10.1	10.1	10.1	10.1	10.1	10.1	10.1	10.1	10.1	10.1	10.1	10.1	7.9	7.9	7.9	7.9	9	8
Houston Pilots I - Exxon 3	10.1	10.1	10.1	10.1	10.1	10.1	10.1	10.1	10.1	10.1	10.1	10.1	10.1	10.1	10.1	10.1	10.1	10.1	7.9	7.9	7.9	7.9	9	6.9
Houston Pilots H - Morgans Point	10.1	10.1	10.1	10.1	10.1	10.1	10.1	10.1	10.1	10.1	10.1	10.1	10.1	10.1	10.1	10.1	10.1	10.1	7.9	7.9	7.9	7.9	9	6.9
Houston Pilots G - 75/76	10.1	10.1	10.1	10.1	10.1	10.1	10.1	10.1	10.1	10.1	10.1	10.1	10.1	10.1	10.1	10.1	10.1	10.1	9	7.9	9	7.9	9	9
Houston Pilots F - 63/64	10.1	10.1	10.1	10.1	10.1	10.1	10.1	10.1	10.1	10.1	10.1	10.1	10.1	10.1	10.1	10.1	10.1	10.1	9	7.9	9	7.9	9	9
Houston Pilots E - 51/52	10.1	10.1	10.1	10.1	10.1	10.1	10.1	10.1	10.1	10.1	10.1	10.1	10.1	10.1	10.1	10.1	10.1	10.1	7.9	7.9	7.9	6.9	9	9
Houston Pilots D - 37/38	10.1	10.1	10.1	10.1	10.1	10.1	10.1	10.1	10.1	10.1	10.1	10.1	10.1	10.1	10.1	10.1	10.1	10.1	7.9	9	7.9	6.9	9	9
Houston Pilots C - 25/26	10.1	10.1	10.1	10.1	10.1	10.1	10.1	10.1	10.1	10.1	10.1	10.1	10.1	10.1	10.1	10.1	10.1	10.1	9	9	9	6.9	9	8
Houston Pilots B - 11/12	10.1	10.1	10.1	10.1	10.1	10.1	10.1	10.1	10.1	10.1	10.1	10.1	10.1	10.1	10.1	10.1	10.1	10.1	9	9	9	6.9	9	8
Houston Pilots A - 1 & 2 Bravo	10.1	10.1	10.1	10.1	10.1	10.1	10.1	10.1	10.1	10.1	10.1	10.1	10.1	10.1	10.1	10.1	10.1	10.1	9	9	9	6.9	9	9

NOTE: This is automated data that may/may not agree with the official BAM thinking that's found on the daily slides or special visibility report slides. This data should be used as a guide only

Houston Pilots Wind Chart



Forecast Confidence

Above Normal Below Normal

Sustained wind 10 Knots

Gusts 15 Knots

Wind from the SE

Example

10

15

↙

Houston Pilots N - 610 Bridge	9	9	9	8	8	7	6	6	5	5	5	5	5	5	6	6	6	7	7	8	8	9	9	9	10	
	20	18	18	17	16	14	13	12	10	10	10	10	10	10	12	13	13	14	14	15	16	17	18	20	21	
	↙	↙	↙	↙	↙	↙	↙	↙	↙	↙	↙	↙	↙	↙	↙	↙	↙	↙	↙	↙	↙	↙	↙	↙	↙	
Houston Pilots M - Kinder 1	9	9	9	8	8	7	6	6	5	5	5	5	5	5	6	6	6	6	7	8	8	8	9	9	10	
	20	18	18	17	16	14	13	12	10	10	10	10	10	10	12	13	13	14	15	15	16	17	18	20	21	
	↙	↙	↙	↙	↙	↙	↙	↙	↙	↙	↙	↙	↙	↙	↙	↙	↙	↙	↙	↙	↙	↙	↙	↙	↙	
Houston Pilots L - Greens Bayou	9	9	8	8	8	6	6	5	5	3	3	5	5	6	6	6	6	7	8	8	8	8	9	9	10	
	18	17	17	16	15	14	13	10	10	9	9	10	10	12	13	13	14	15	15	16	17	18	18	21		
	↙	↙	↙	↙	↙	↙	↙	↙	↙	↙	↙	↙	↙	↙	↙	↙	↙	↙	↙	↙	↙	↙	↙	↙	↙	
Houston Pilots K - Shell Crude	9	9	8	8	7	6	6	5	5	5	5	5	5	6	6	6	6	7	8	8	8	8	9	9	10	
	18	17	17	16	15	13	13	10	10	10	10	10	10	12	13	13	14	15	15	16	17	18	18	21		
	↙	↙	↙	↙	↙	↙	↙	↙	↙	↙	↙	↙	↙	↙	↙	↙	↙	↙	↙	↙	↙	↙	↙	↙	↙	
Houston Pilots J - Lynchburg Ferries	8	9	8	8	7	6	5	3	3	3	3	3	3	5	6	6	6	7	7	8	8	8	9	9	10	
	18	17	17	16	14	13	12	10	9	9	9	9	10	10	12	13	14	15	15	16	17	18	18	20	21	
	↙	↙	↙	↙	↙	↙	↙	↙	↙	↙	↙	↙	↙	↙	↙	↙	↙	↙	↙	↙	↙	↙	↙	↙	↙	
Houston Pilots I - Exxon 3	12	12	12	10	10	9	8	8	8	8	8	8	9	10	10	10	12	12	13	13	13	13	13	13	13	
	20	18	18	17	16	15	14	13	13	13	13	13	14	14	15	15	16	16	17	18	18	20	20	21		
	↙	↙	↙	↙	↙	↙	↙	↙	↙	↙	↙	↙	↙	↙	↙	↙	↙	↙	↙	↙	↙	↙	↙	↙	↙	
Houston Pilots H - Morgans Point	12	12	12	10	10	9	9	8	8	8	8	8	9	10	10	10	12	12	13	13	13	13	13	13	13	
	20	18	18	17	16	15	14	14	13	13	13	13	14	15	15	16	16	17	18	20	20	20	21			
	↙	↙	↙	↙	↙	↙	↙	↙	↙	↙	↙	↙	↙	↙	↙	↙	↙	↙	↙	↙	↙	↙	↙	↙	↙	
Houston Pilots G - 75/76	13	12	12	12	10	10	10	10	10	10	10	10	10	10	12	13	13	13	14	14	14	14	14	13	13	14
	20	18	18	18	17	16	15	15	15	15	15	15	15	16	17	18	20	20	21	22	22	22	21	22		
	↙	↙	↙	↙	↙	↙	↙	↙	↙	↙	↙	↙	↙	↙	↙	↙	↙	↙	↙	↙	↙	↙	↙	↙	↙	
Houston Pilots F - 63/64	12	12	12	12	10	10	10	10	10	10	10	10	10	10	12	13	13	13	14	14	14	14	14	13	13	
	20	18	18	18	17	16	15	15	15	15	15	15	15	16	17	18	20	21	21	22	22	22	22			
	↙	↙	↙	↙	↙	↙	↙	↙	↙	↙	↙	↙	↙	↙	↙	↙	↙	↙	↙	↙	↙	↙	↙	↙	↙	
Houston Pilots E - 51/52	13	13	12	12	12	10	10	10	10	10	10	10	10	10	12	13	13	13	14	14	15	15	15	14	14	
	20	20	18	18	18	17	16	16	16	15	15	15	15	16	17	18	20	20	21	22	22	23	22	22		
	↙	↙	↙	↙	↙	↙	↙	↙	↙	↙	↙	↙	↙	↙	↙	↙	↙	↙	↙	↙	↙	↙	↙	↙	↙	
Houston Pilots D - 37/38	13	13	12	12	12	10	10	10	10	10	10	10	10	10	12	13	13	13	14	14	15	15	15	15	14	
	20	18	18	18	18	17	16	16	16	16	16	16	15	16	16	17	18	20	20	21	22	22	23	23	22	
	↙	↙	↙	↙	↙	↙	↙	↙	↙	↙	↙	↙	↙	↙	↙	↙	↙	↙	↙	↙	↙	↙	↙	↙	↙	
Houston Pilots C - 25/26	13	13	12	12	12	10	10	10	10	10	10	10	10	10	12	12	13	13	13	14	15	15	15	15	14	
	20	18	18	18	18	17	16	16	16	16	16	16	16	16	17	17	18	20	20	21	22	23	23	23	22	
	↙	↙	↙	↙	↙	↙	↙	↙	↙	↙	↙	↙	↙	↙	↙	↙	↙	↙	↙	↙	↙	↙	↙	↙	↙	
Houston Pilots B - 11/12	13	12	12	12	10	10	10	10	10	9	9	9	10	10	10	12	12	13	13	14	14	14	14	15	14	
	20	18	18	18	18	17	16	16	16	16	16	16	16	16	17	17	18	20	20	21	22	23	23	23	22	
	↙	↙	↙	↙	↙	↙	↙	↙	↙	↙	↙	↙	↙	↙	↙	↙	↙	↙	↙	↙	↙	↙	↙	↙	↙	
Houston Pilots A - 1 & 2 Bravo	13	13	13	13	13	12	13	13	13	13	13	13	13	13	13	15	15	15	16	16	16	17	16	16	16	
	20	20	20	21	20	18	18	18	18	18	18	18	18	18	20	20	21	22	23	24	24	24	24	24	24	
	↙	↙	↙	↙	↙	↙	↙	↙	↙	↙	↙	↙	↙	↙	↙	↙	↙	↙	↙	↙	↙	↙	↙	↙	↙	

NOTE: This is automated data that may/may not agree with the official BAM thinking that's found on the daily slides. This data should be used as a guide only.

Houston Pilots: TUE. 9/3/2024



Forecast Discussion

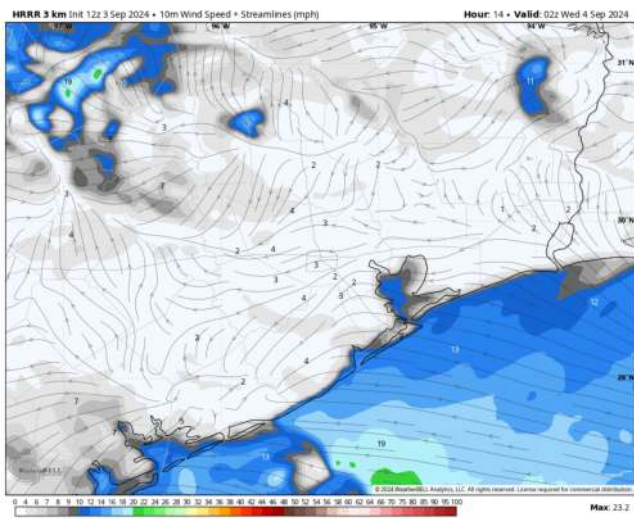
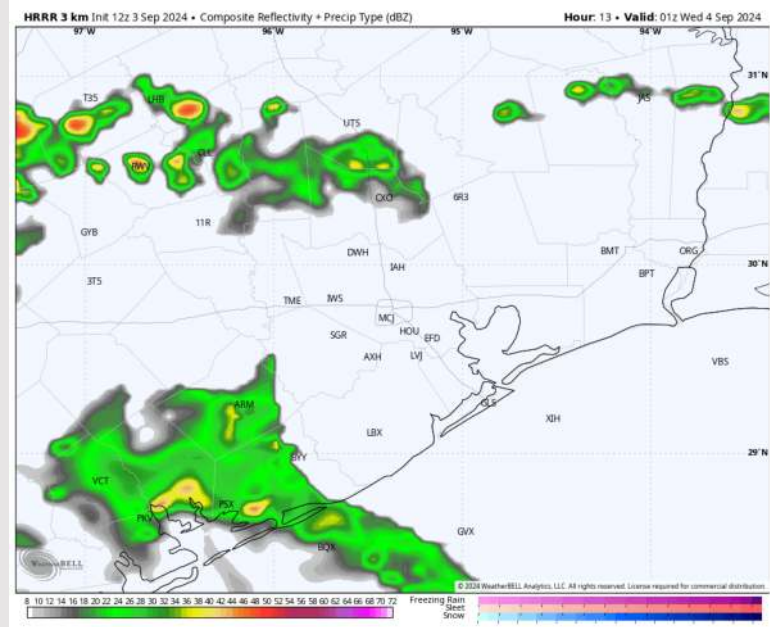
Precip: Scattered to widespread rain chances continue to sit just S of Galveston Bay / S of Stations. Cannot rule out a stray shower (10%) through 7 PM, otherwise favoring dry conditions.

Wind: Winds will be out of the E/SE throughout the PM. **N of Morgan's Point:** Winds will be sustained 5-10 kts throughout the rest of the day. **S of Morgan's Point:** Winds will be sustained at 10 - 15 kts, with gusts of 18-20 kts possible for stations S of 11/12.

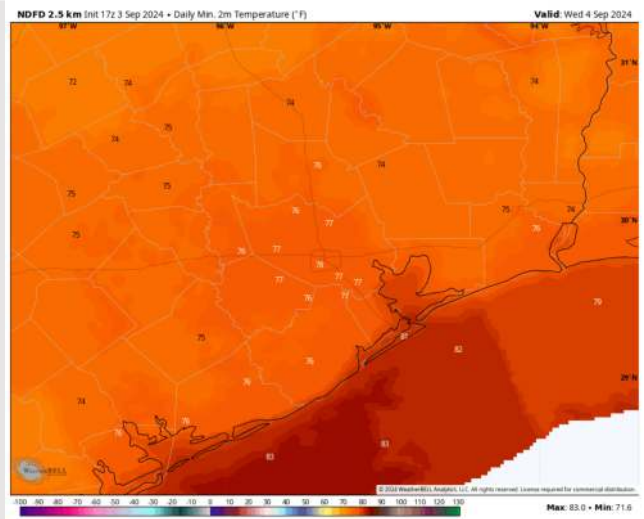
Low Temps: **N of Morgan's Point:** Upper 70s F. **S of Morgan's Point:** Low 80s F.

Visibility: Not anticipating any fog concerns for this PM.

Precip Image: 8 PM CT



Wind Speed:
9 PM CT



Low Temps
WED AM

Houston Pilots: WED. 9/4/2024



Forecast Discussion

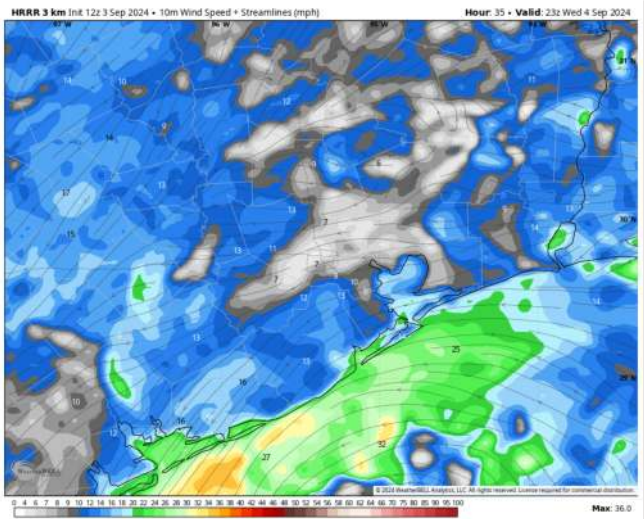
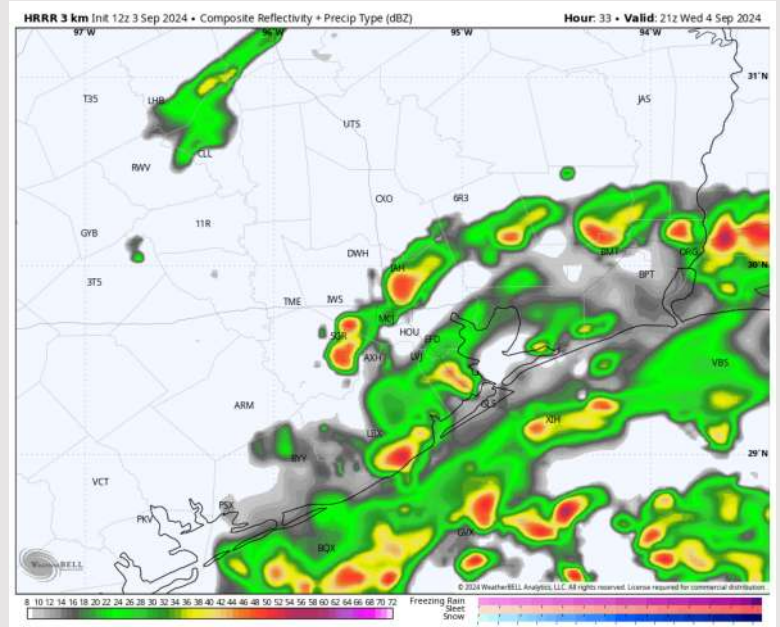
Precip: WED AM will begin with 10% spotty showers with scattered to widespread (40-50%) showers and storms in play for all Stations throughout the rest of the day Wednesday. **Storms may see wind gusts near 40 kts.**

Wind: Winds will be generally out of the E/NE throughout the day Wednesday. **N of Morgan's Point:** Winds at 8 - 13 kts throughout the day. **S of Morgan's Point:** Winds will be at 20 - 25 kts throughout the day. **Non-thunderstorm wind gusts of 30 kts can be possible!**

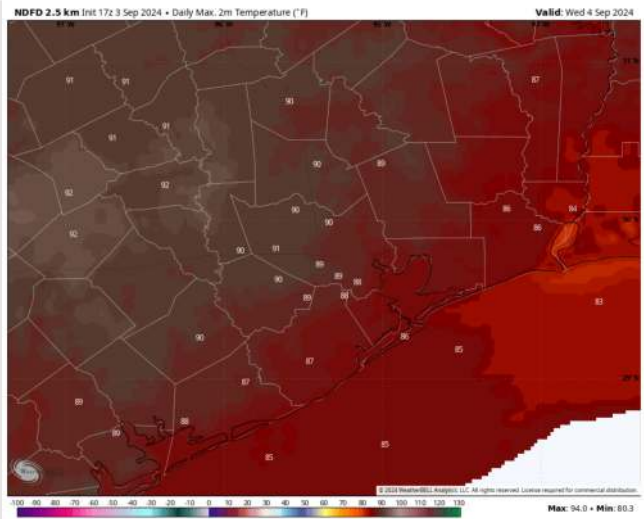
High Temps: **N of Morgan's Point:** Upper 80s F. **S of Morgan's Point:** Mid 80s F.

Visibility: Not anticipating any fog concerns Wednesday, however, reduced visibilities will be possible in heavy downpours.

Precip Image: 4 PM CT



Wind Speed
6 PM CT



High Temps
Wednesday

Houston Pilots: THU. 9/5/2024



Forecast Discussion

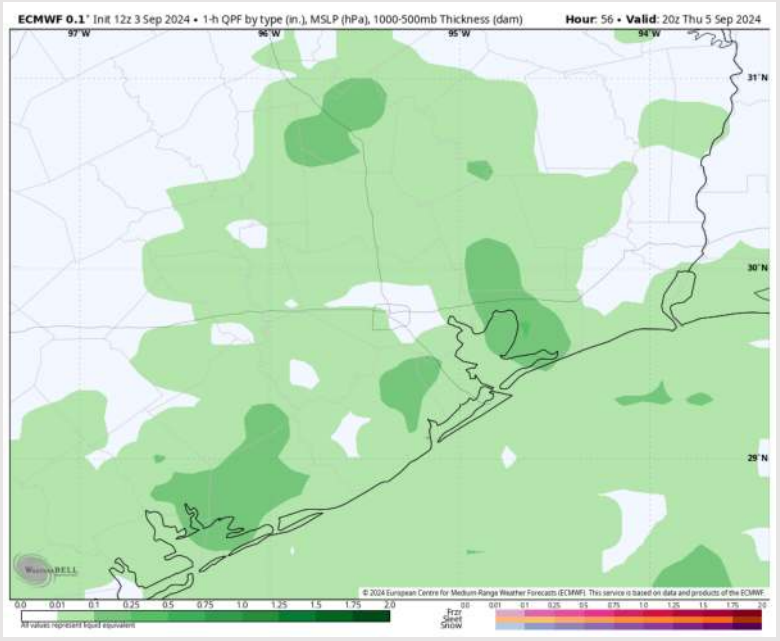
Precip: Scattered to widespread showers and storms can be expected across all stations throughout the day. Coverage will be the greatest and most frequent for stations S of Morgan's Point.

Wind: Sustained winds will be out of the NE throughout the day. **N of Morgan's Point:** Winds will be at 5 – 10 kts for the day. **S of Morgan's Point:** Winds will be at 10-15 kts with an occasional gusts near 20-23 kts at the Boarding Station.

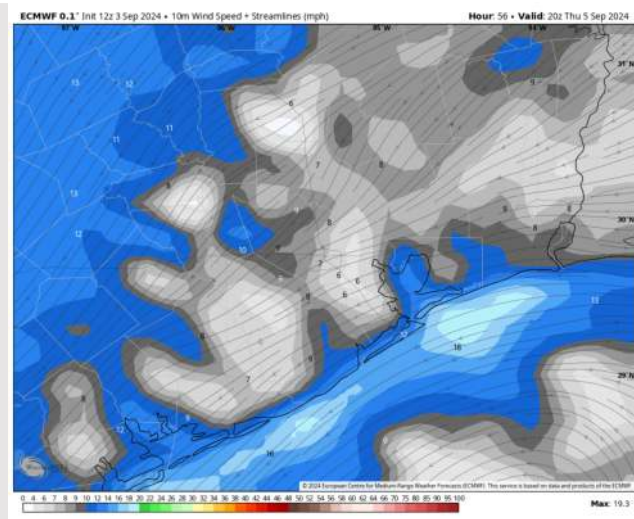
High Temps: **N of Morgan's Point:** Upper 80s F. **S of Morgan's Point:** Low 80s F.

Visibility: Not anticipating any visibility concerns Thursday.

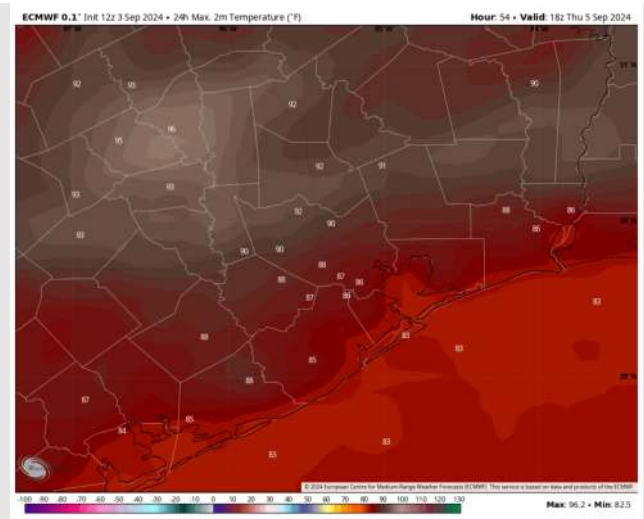
Precip Image: 3 PM CT



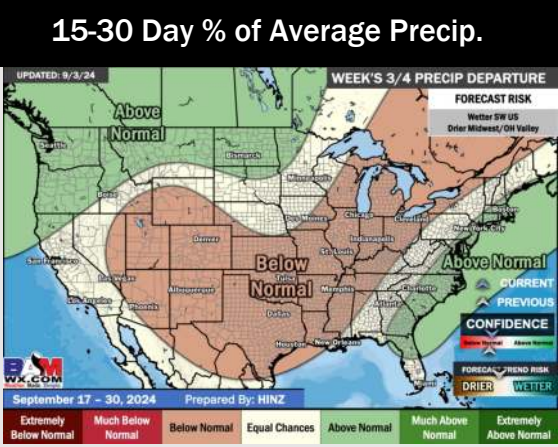
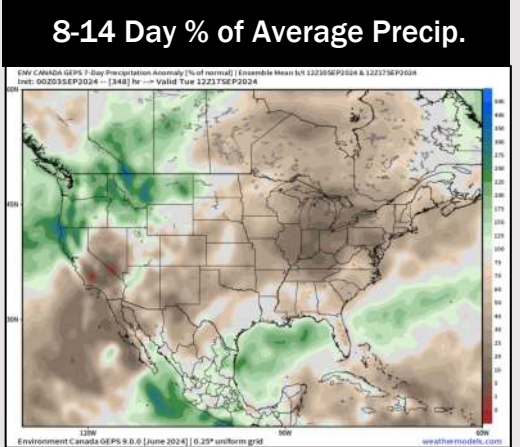
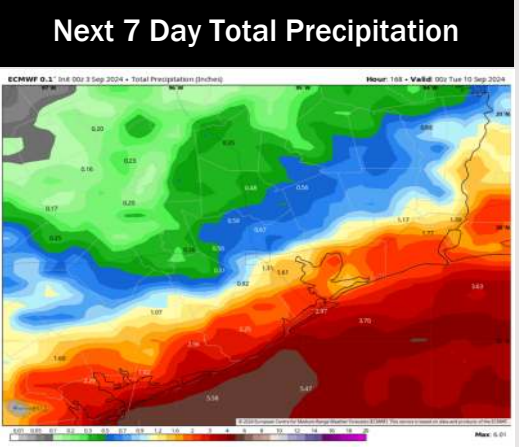
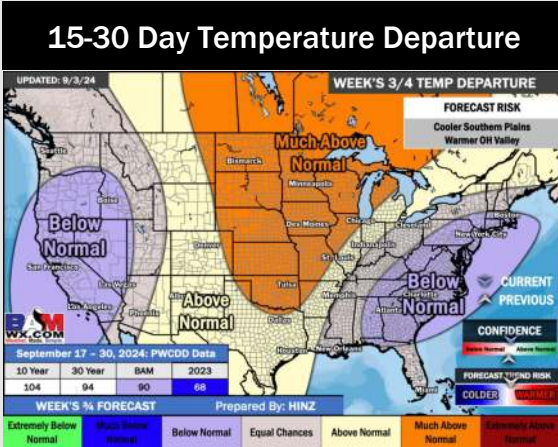
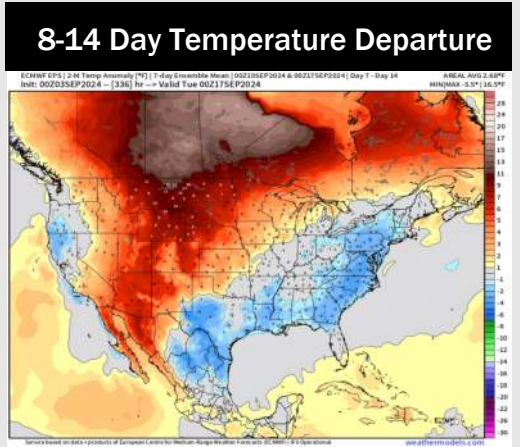
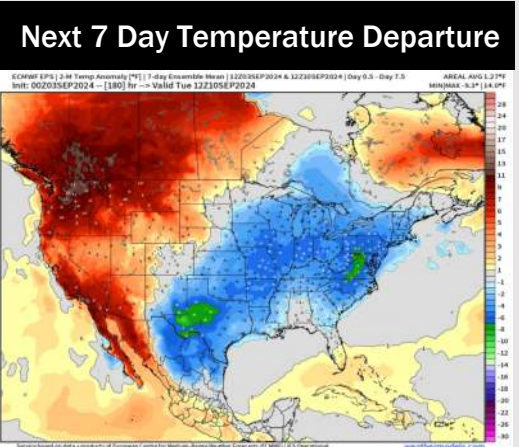
Wind Speed:
3 PM CT



High Temps
Thursday



Houston Pilots: 9/2/24



- Temps are expected to be below normal for the week 1 timeframe. Scattered to widespread rain chances are expected daily through the next week.
- Below normal temperatures are favored for week 2 with seasonable / average rain chances. Tropical activity threats for Week 2 and beyond will continue to be monitored
- Above normal temperatures and seasonable precipitation chances are expected for the weeks 3/4 timeframe.