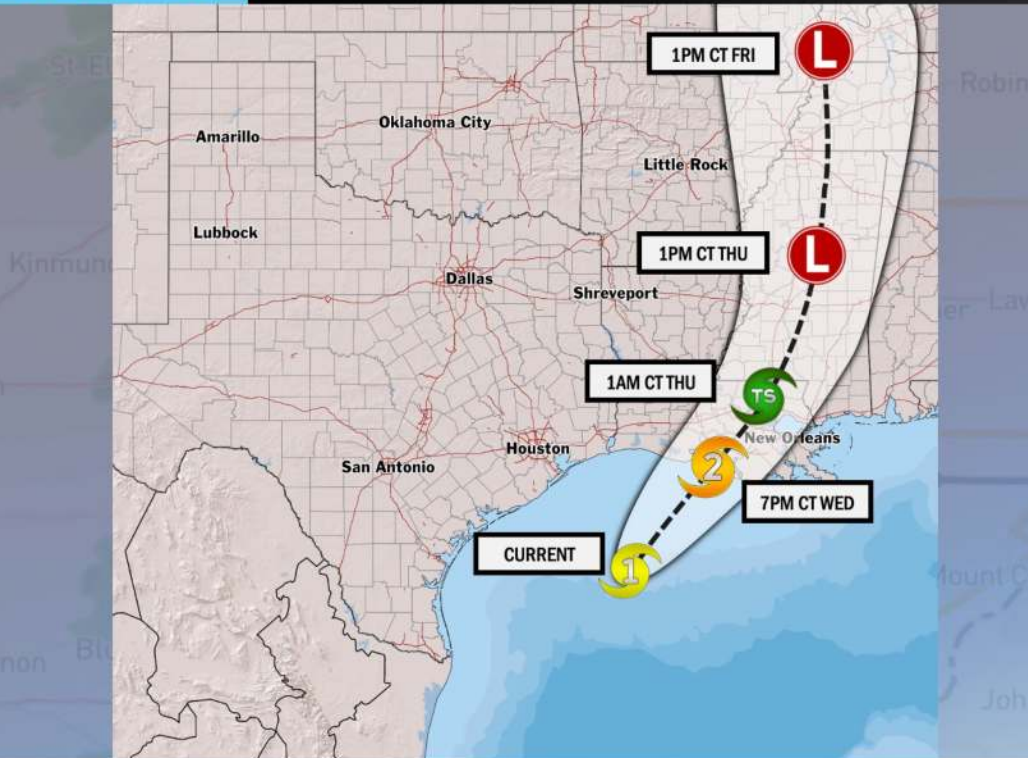


Houston Pilots Tropical Update



HURRICANE FRANCINE

DAILY INSIGHT 7:30 AM CT Wednesday, September 11, 2024 **Forecaster: Elliott**



TIMING: NOW – FRIDAY PM

FORECAST NOTES:

- ✓ Francine continues to move NE this AM as a Cat 1 Hurricane
- ✓ We continue to note the risk of potential rapid intensification prior to landfall, resulting in Francine making Landfall as a Category 2 (96-110 MPH)
- ✓ Landfall: Wednesday PM near Vermillion Bay, LA



Houston Pilots Forecast Package



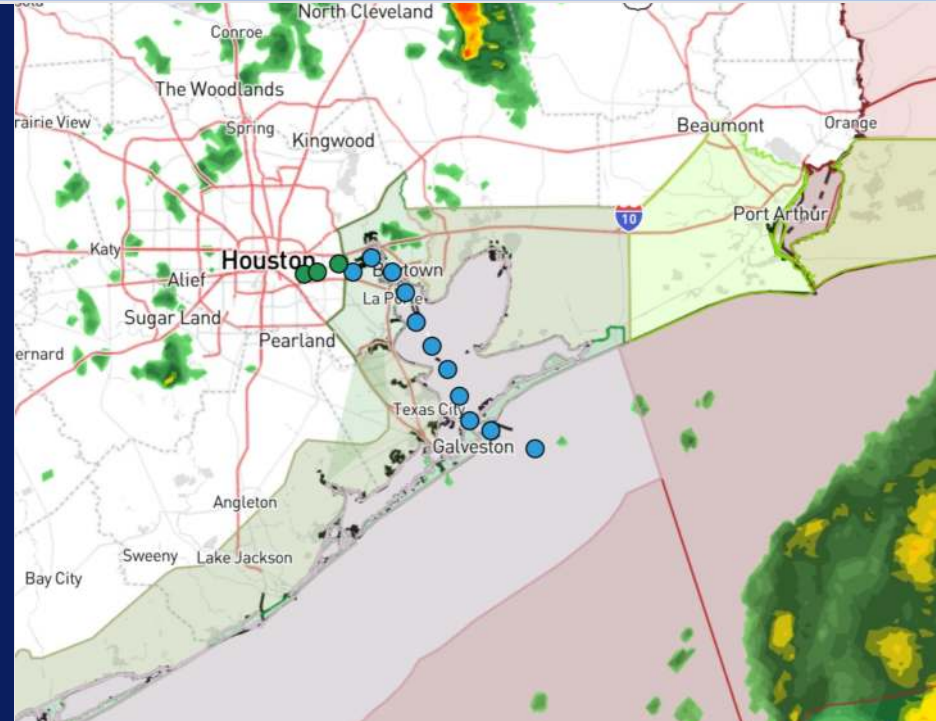
Updated: 8:30 AM CT

Wednesday, September 11, 2024

Forecaster: Alyssa Elliott

Weather Headlines

- **Zulu Port Conditions are in effect (see Trigger Slide below)**
- Anticipating wave heights to drop back below 6 ft by 10 PM today. See wave height slide for more info.
- Winds gusts of 25-35 kts are possible through ~12 - 1 PM for the Boarding Station.
- **Hurricane Video Update (as of WED AM)**



Current Radar: 8:30 AM CT



As always, please do not hesitate to reach out to us with any forecast questions via the chat option on Clarity or our on-call number, **(317)-560-8122** press **1** for forecast questions.

Houston Pilots Port Trigger Update

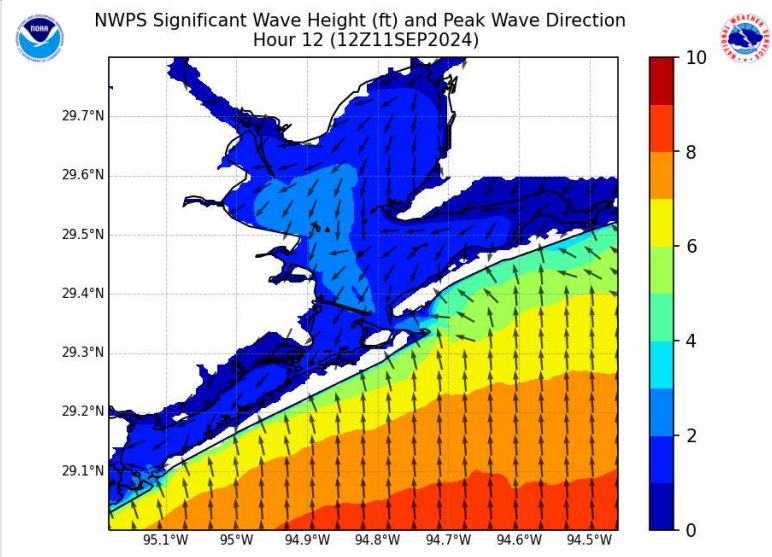


Port Condition	34 KTS+ Sustained Wind Trigger Reached at:	6 Foot Wave Trigger Reached at:	Time Remaining/Trigger Ends At:
Victor	—	—	—
Whiskey	Past This Trigger	—	Ended
X-Ray	Past This Trigger	Past This Trigger	Ended
Yankee	Past This Trigger	Past This Trigger	Past This Trigger
Zulu	CURRENT	CURRENT	10 PM CT WED

Port Condition	Trigger Definition	Trigger Reached?
Victor	Hurricane entering/developing in Gulf of Mexico that's a threat to the area	Past
Whiskey	72 hours prior to predicted sustained winds of 34+ KTS	Past
X-Ray	48 hours prior to predicted sustained winds of 34+ KTS or 6' wave height	Past
Yankee	24 hours prior to predicted sustained winds of 34+ KTS or 6' wave height	Past
Zulu	12 hours prior to predicted sustained winds of 34+ KTS or 6' wave height	YES

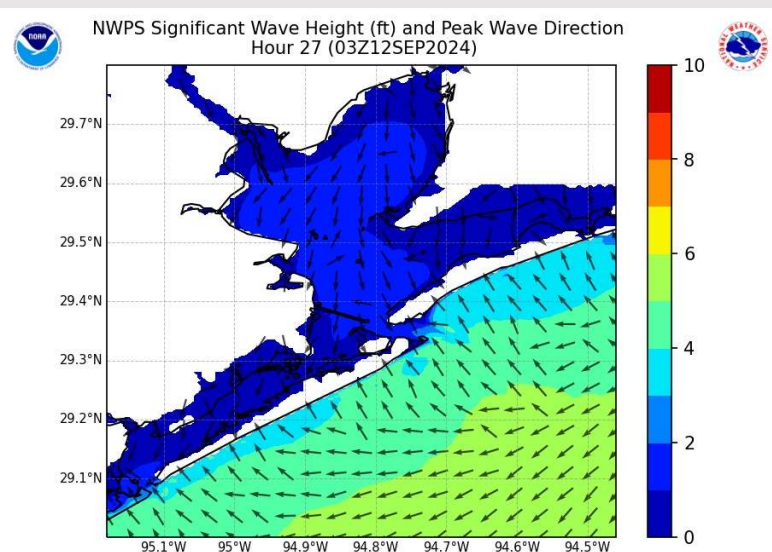
NOTES: Hurricane Francine has been upgraded to a Category 1 Hurricane east of the Texas/Mexico Border. Currently favoring direct landfall along Louisiana's Gulf Coast, however still expecting winds of 34+ kts and wave heights of 6+ ft for Houston / Galveston Bay on WED (tomorrow).

Wave Height Forecast Update



7 AM CT WED

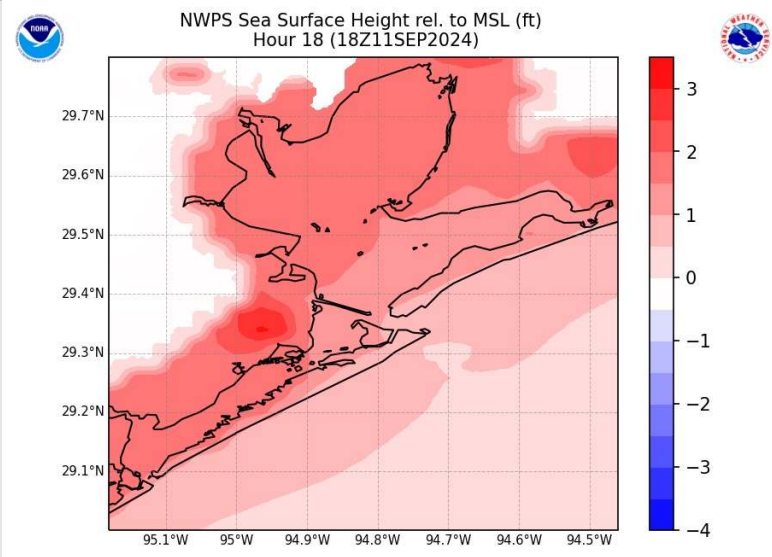
Peak wave heights of 7+ ft will be a risk at the Boarding Station until 1 PM.



10 PM CT WED

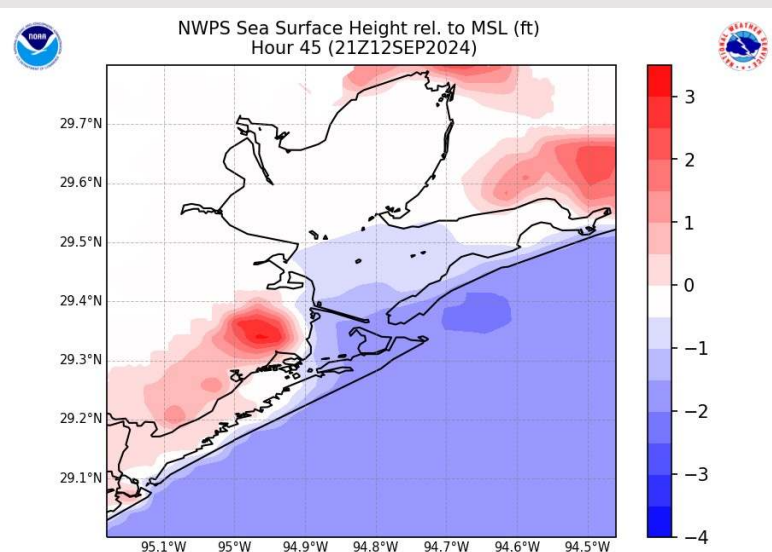
Monitoring for wave heights to be at/above 6 ft until ~10 PM today.

Tide + Surge Forecast Update



1 PM CT WED

Keeping an eye on increased tide and storm surge heights as Hurricane Francine pushes through the Gulf towards LA. Anticipating sea surface height to be 1 – 3 ft above the mean until 4 PM WED.

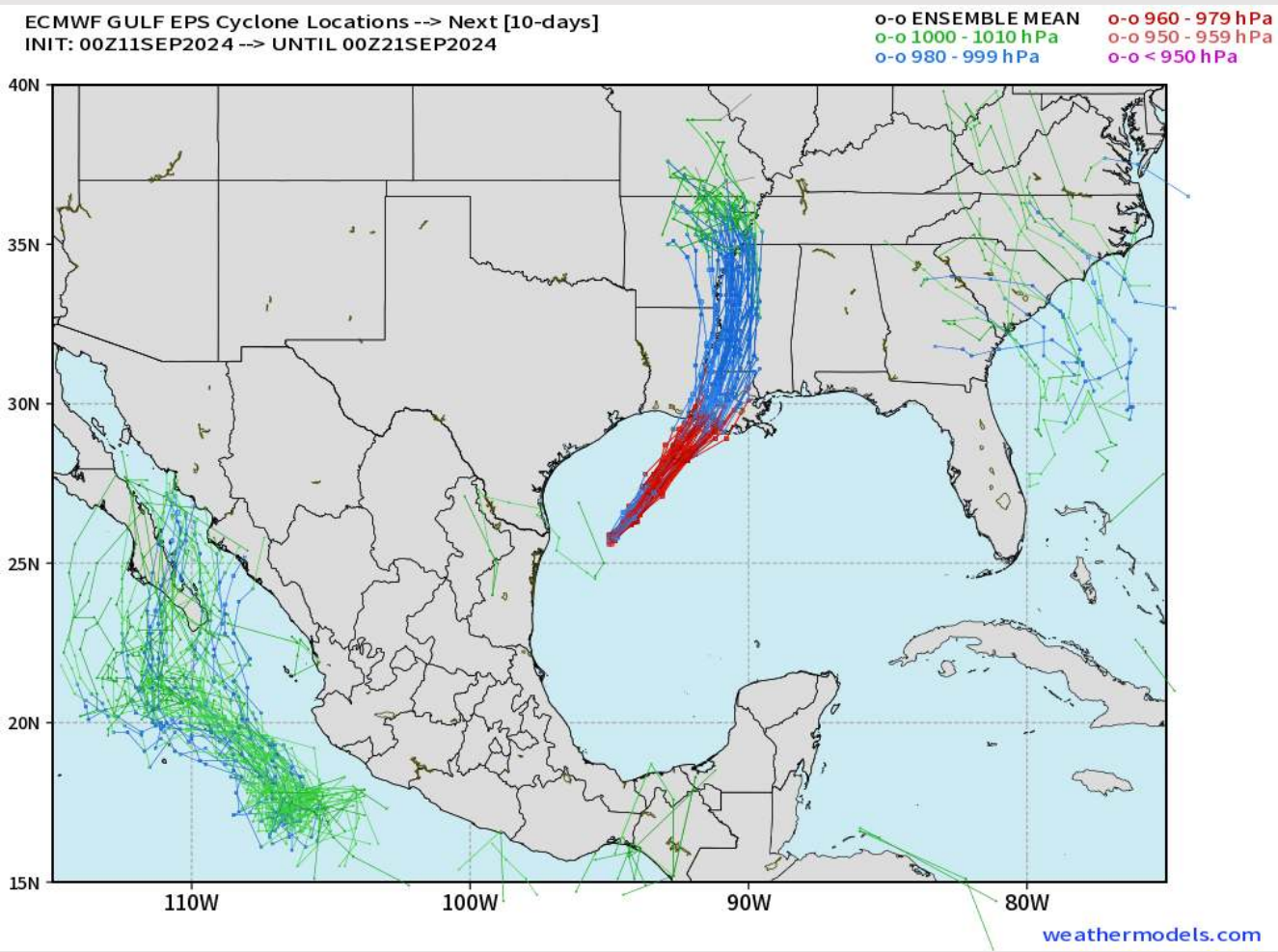


4 PM CT THU

THU evening, sea surface height may be 1 – 2 ft below the mean as Hurricane Francine moves further inland and winds shift out of the N.

Houston Pilots Tropical Update

European Model Next 10 Days - Tropical Tracks



Monitoring Hurricane Francine for impacts as it makes landfall in LA today.

This storm continues to track east of Houston, though increased wave heights, high wind gusts, and heavy rain are all continued risks for stations primarily S of Morgan's Point.

Houston Pilots Visibility Chart (miles)



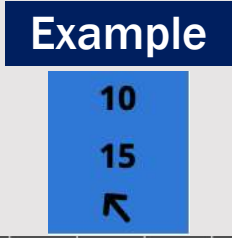
Forecast Confidence



Visibility	Tue 8 pm	Tue 9 pm	Tue 10 pm	Tue 11 pm	Wed 12 am	Wed 1 am	Wed 2 am	Wed 3 am	Wed 4 am	Wed 5 am	Wed 6 am	Wed 7 am	Wed 8 am	Wed 9 am	Wed 10 am	Wed 11 am	Wed 12 pm	Wed 1 pm	Wed 2 pm	Wed 3 pm	Wed 4 pm	Wed 5 pm	Wed 6 pm	Wed 7 pm
Houston Pilots N - 610 Bridge	6.9	7.9	7.9	7.9	9	9	9	10	10	10	10	10	7.9	5.9	4.9	3.9	4.9	5.9	6.9	6.9	7.9	9	9	10
Houston Pilots M - Kinder 1	6.9	7.9	7.9	7.9	9	9	10	10	10	10	10	10	7.9	5.9	4.9	3.9	4.9	5.9	6.9	6.9	7.9	9	9	10
Houston Pilots L - Greens Bayou	6.9	7.9	7.9	7.9	9	10	10	10	10	10	10	10	7.9	5.9	4.9	3.9	4.9	5.9	6.9	6.9	7.9	7.9	7.9	9
Houston Pilots K - Shell Crude	7.9	7.9	7.9	7.9	9	10	10	10	10	10	10	10	7.9	5.9	4.9	3.9	4.9	5.9	6.9	6.9	7.9	7.9	7.9	9
Houston Pilots J - Lynchburg Ferries	7.9	7.9	7.9	7.9	9	10	10	10	10	10	10	10	7.9	5.9	4.9	3.9	4.9	5.9	6.9	6.9	7.9	7.9	7.9	9
Houston Pilots I - Exxon 3	7.9	7.9	7.9	7.9	9	10	10	10	10	10	10	10	7.9	5.9	4.9	2.9	4.9	5.9	5.9	6.9	6.9	6.9	7.9	9
Houston Pilots H - Morgans Point	7.9	7.9	7.9	7.9	9	10	10	10	10	10	10	10	7.9	5.9	4.9	2.9	4.9	4.9	5.9	6.9	6.9	6.9	6.9	9
Houston Pilots G - 75/76	6.9	6.9	6.9	6.9	6.9	6.9	7.9	10	7.9	7.9	10	10	10	6.9	5.9	2.9	3.9	2.9	3.9	4.9	4.9	4.9	6.9	9
Houston Pilots F - 63/64	6.9	6.9	6.9	6.9	6.9	6.9	6.9	10	7.9	7.9	10	10	10	6.9	5.9	3.9	3.9	2.9	3.9	4.9	4.9	4.9	6.9	9
Houston Pilots E - 51/52	5.9	5.9	6.9	6.9	6.9	5.9	6.9	7.9	9	7.9	10	10	10	6.9	5.9	3.9	3.9	2.9	3.9	3.9	4.9	4.9	5.9	9
Houston Pilots D - 37/38	5.9	5.9	6.9	6.9	6.9	5.9	6.9	7.9	9	7.9	10	10	10	6.9	4.9	3.9	3.9	2.9	3.9	3.9	4.9	4.9	5.9	9
Houston Pilots C - 25/26	5.9	5.9	6.9	6.9	6.9	5.9	6.9	9	6.9	7.9	10	10	10	6.9	4.9	3.9	3.9	2.9	3.9	3.9	4.9	4.9	5.9	9
Houston Pilots B - 11/12	5.9	5.9	6.9	6.9	6.9	6.9	5.9	6.9	6.9	7.9	10	10	10	4.9	4.9	2.9	3.9	2.9	3.9	3.9	3.9	4.9	5.9	9
Houston Pilots A - 1 & 2 Bravo	4.9	4.9	5.9	6.9	5.9	6.9	5.9	6.9	6.9	7.9	10	10	10	6.9	6.9	4.9	4.9	3.9	3.9	3.9	3.9	3.9	4.9	7

NOTE: This is automated data that may/may not agree with the official BAM thinking that's found on the daily slides or special visibility report slides. This data should be used as a guide only

Houston Pilots Wind Chart



Wind	Tue 8 pm	Tue 9 pm	Tue 10 pm	Tue 11 pm	Wed 12 am	Wed 1 am	Wed 2 am	Wed 3 am	Wed 4 am	Wed 5 am	Wed 6 am	Wed 7 am	Wed 8 am	Wed 9 am	Wed 10 am	Wed 11 am	Wed 12 pm	Wed 1 pm	Wed 2 pm	Wed 3 pm	Wed 4 pm	Wed 5 pm	Wed 6 pm	Wed 7 pm	
Houston Pilots N - 610 Bridge	12 23 ↙	12 24 ↙	12 24 ↙	12 23 ↙	13 23 ↙	12 23 ↙	12 22 ↙	12 22 ↙	12 22 ↙	12 22 ↙	12 22 ↙	13 22 ↙	13 22 ↙	13 23 ↙	13 24 ↙	13 24 ↙	13 24 ↙	13 24 ↙	13 24 ↙	13 25 ↙	13 24 ↙	12 24 ↙	12 23 ↙	12 21 ↙	10 21 ↙
Houston Pilots M - Kinder 1	12 23 ↙	12 24 ↙	12 24 ↙	12 23 ↙	13 23 ↙	12 23 ↙	12 22 ↙	12 22 ↙	12 22 ↙	12 22 ↙	12 22 ↙	13 22 ↙	13 22 ↙	13 23 ↙	13 24 ↙	13 24 ↙	13 24 ↙	13 24 ↙	13 25 ↙	13 25 ↙	13 25 ↙	12 24 ↙	12 23 ↙	12 21 ↙	10 21 ↙
Houston Pilots L - Greens Bayou	12 23 ↙	12 23 ↙	12 24 ↙	12 23 ↙	12 24 ↙	12 23 ↙	10 22 ↙	10 23 ↙	10 23 ↙	12 22 ↙	12 23 ↙	12 23 ↙	12 23 ↙	13 24 ↙	13 24 ↙	13 24 ↙	13 24 ↙	13 24 ↙	13 25 ↙	13 25 ↙	13 24 ↙	13 24 ↙	13 23 ↙	12 23 ↙	10 21 ↙
Houston Pilots K - Shell Crude	12 23 ↙	12 24 ↙	12 24 ↙	12 24 ↙	12 24 ↙	12 24 ↙	10 23 ↙	10 23 ↙	12 24 ↙	12 23 ↙	12 24 ↙	12 24 ↙	13 23 ↙	13 25 ↙	13 24 ↙	13 24 ↙	13 24 ↙	13 24 ↙	13 25 ↙	13 25 ↙	13 25 ↙	13 24 ↙	13 23 ↙	12 23 ↙	10 21 ↙
Houston Pilots J - Lynchburg Ferries	12 23 ↙	12 23 ↙	10 24 ↙	12 24 ↙	12 24 ↙	10 23 ↙	10 22 ↙	10 23 ↙	10 23 ↙	10 23 ↙	10 24 ↙	12 24 ↙	12 23 ↙	13 24 ↙	13 24 ↙	13 24 ↙	13 24 ↙	13 24 ↙	13 25 ↙	13 25 ↙	13 25 ↙	13 24 ↙	13 23 ↙	12 23 ↙	10 21 ↙
Houston Pilots I - Exxon 3	17 24 ↙	17 25 ↙	18 25 ↙	20 26 ↙	20 26 ↙	20 26 ↙	18 25 ↙	20 26 ↙	20 26 ↙	20 26 ↙	20 26 ↙	20 26 ↙	20 26 ↙	20 26 ↙	18 25 ↙	17 25 ↙	17 25 ↙	17 25 ↙	17 26 ↙	17 26 ↙	17 26 ↙	16 25 ↙	15 25 ↙	15 24 ↙	15 22 ↙
Houston Pilots H - Morgans Point	17 24 ↙	17 25 ↙	18 25 ↙	20 26 ↙	20 26 ↙	20 26 ↙	18 25 ↙	20 26 ↙	20 26 ↙	20 26 ↙	20 26 ↙	20 26 ↙	20 26 ↙	18 26 ↙	18 25 ↙	17 25 ↙	17 25 ↙	17 25 ↙	17 26 ↙	17 26 ↙	17 26 ↙	15 25 ↙	15 24 ↙	15 24 ↙	15 22 ↙
Houston Pilots G - 75/76	20 28 ↙	20 29 ↙	21 29 ↙	21 29 ↙	22 29 ↙	21 29 ↙	20 28 ↙	21 28 ↙	21 29 ↙	21 29 ↙	22 30 ↙	22 30 ↙	21 30 ↙	21 30 ↙	21 30 ↙	20 30 ↙	20 30 ↙	20 29 ↙	18 28 ↙	18 29 ↙	17 29 ↙	17 26 ↙	17 26 ↙	17 24 ↙	16 23 ↙
Houston Pilots F - 63/64	20 28 ↙	20 29 ↙	21 29 ↙	21 30 ↙	21 29 ↙	21 29 ↙	20 28 ↙	21 28 ↙	21 29 ↙	21 29 ↙	22 30 ↙	22 30 ↙	21 31 ↙	22 31 ↙	21 31 ↙	20 30 ↙	21 30 ↙	20 29 ↙	18 28 ↙	18 29 ↙	18 29 ↙	18 28 ↙	17 26 ↙	17 25 ↙	16 24 ↙
Houston Pilots E - 51/52	20 29 ↙	21 29 ↙	22 30 ↙	22 31 ↙	22 30 ↙	22 29 ↙	20 28 ↙	22 29 ↙	22 30 ↙	22 30 ↙	22 31 ↙	22 31 ↙	22 31 ↙	22 32 ↙	22 32 ↙	22 32 ↙	22 32 ↙	21 31 ↙	20 29 ↙	20 29 ↙	20 29 ↙	20 29 ↙	17 26 ↙	17 25 ↙	16 24 ↙
Houston Pilots D - 37/38	21 29 ↙	22 29 ↙	22 31 ↙	22 31 ↙	22 30 ↙	22 30 ↙	20 29 ↙	22 30 ↙	22 30 ↙	22 30 ↙	22 31 ↙	22 31 ↙	22 32 ↙	22 32 ↙	22 33 ↙	22 33 ↙	22 33 ↙	22 31 ↙	20 29 ↙	20 29 ↙	20 29 ↙	20 28 ↙	18 26 ↙	17 26 ↙	17 24 ↙
Houston Pilots C - 25/26	20 29 ↙	21 30 ↙	21 31 ↙	21 31 ↙	21 30 ↙	20 30 ↙	20 29 ↙	20 30 ↙	21 31 ↙	21 30 ↙	22 32 ↙	22 32 ↙	22 32 ↙	22 33 ↙	22 35 ↙	22 33 ↙	22 33 ↙	22 32 ↙	20 30 ↙	20 29 ↙	20 29 ↙	20 28 ↙	18 26 ↙	17 26 ↙	16 25 ↙
Houston Pilots B - 11/12	18 29 ↙	18 30 ↙	20 31 ↙	20 31 ↙	18 30 ↙	18 30 ↙	17 29 ↙	18 30 ↙	18 31 ↙	18 30 ↙	20 32 ↙	20 32 ↙	20 32 ↙	21 33 ↙	22 35 ↙	21 33 ↙	21 33 ↙	21 32 ↙	20 30 ↙	18 30 ↙	20 30 ↙	20 29 ↙	17 28 ↙	16 25 ↙	15 24 ↙
Houston Pilots A - 1 & 2 Bravo	22 32 ↙	22 32 ↙	23 35 ↙	23 33 ↙	23 33 ↙	22 33 ↙	22 32 ↙	23 33 ↙	23 35 ↙	23 35 ↙	24 37 ↙	24 37 ↙	24 36 ↙	25 38 ↙	25 38 ↙	24 37 ↙	24 37 ↙	24 36 ↙	23 36 ↙	22 35 ↙	22 35 ↙	22 35 ↙	21 32 ↙	20 31 ↙	18 29 ↙

NOTE: This is automated data that may/may not agree with the official BAM thinking that's found on the daily slides. This data should be used as a guide only.

Houston Pilots: WED. 9/11/2024



Forecast Discussion

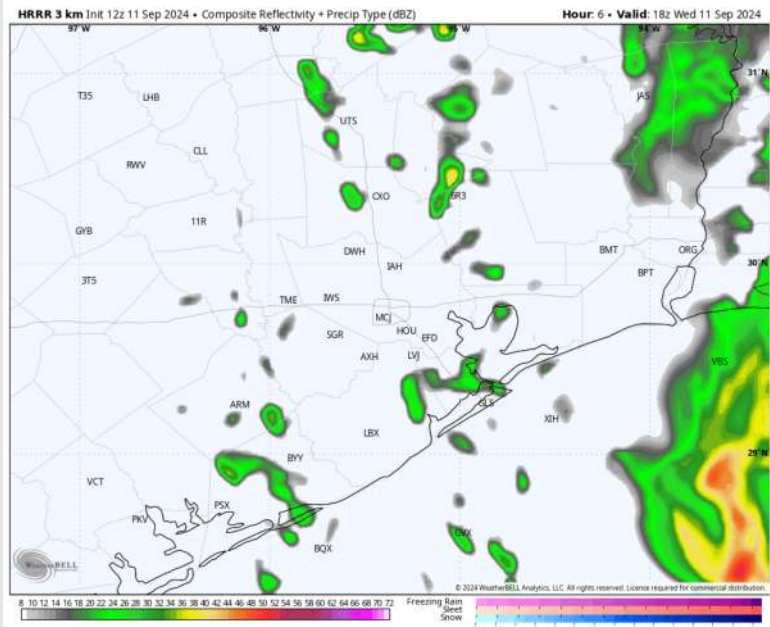
Precip: Scattered showers and storms expected for all stations through 10 PM before clearing out for the rest of the night.

Wind: Winds will be out of the E/NE through 4 PM before shifting to out of the North. **N of Morgan's Point:** Winds will be at 8-13 kts throughout the day. **S of Morgan's Point:** Sustained winds will be 20-25 kts through 1 PM before decreasing to 15-20 kts the rest of the day. **Gusts of 25-35 kts possible near the Boarding Station through ~12 PM.**

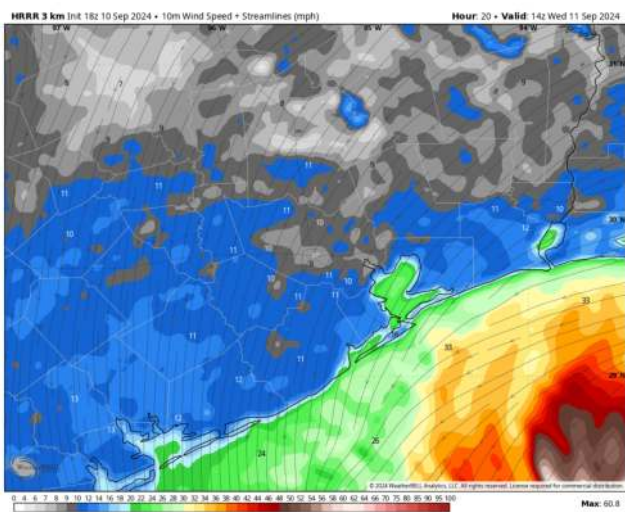
High Temps: **N of Morgan's Point:** Mid 80s F. **S of Morgan's Point:** Low 80s F.

Visibility: Not anticipating any fog concerns for Wednesday, however visibilities will be reduced under heavy downpours.

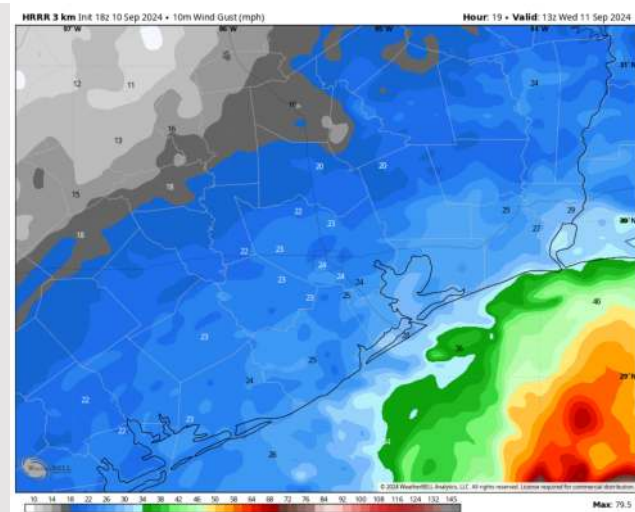
Precip Image: 1 PM CT



Wind Speed:
9 AM CT



Wind Gusts:
8 AM CT



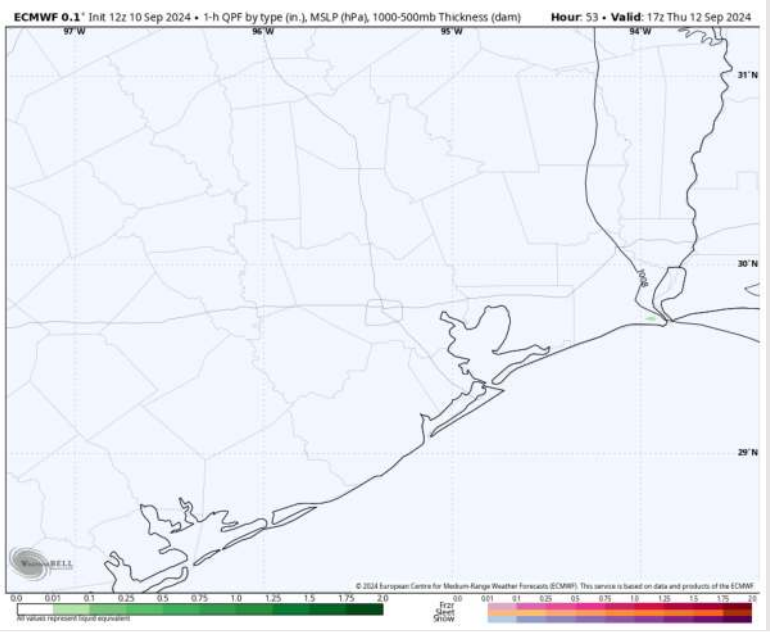
Houston Pilots: THU. 9/12/2024



Forecast Discussion

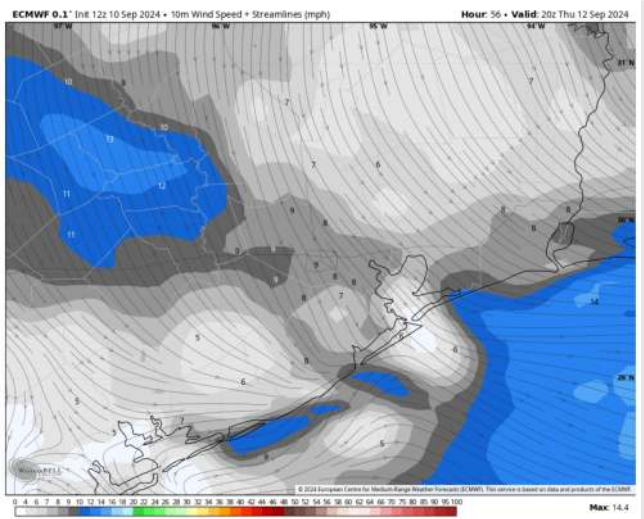
- Precip:** Favoring dry conditions for Thursday.
- Wind:** Winds will be out of the N/NW throughout the day on THU. **N of Morgan's Point:** Winds will be sustained at 3-8 kts throughout the day. **S of Morgan's Point:** Winds will be sustained at 10-15 kts throughout 12 PM before decreasing to 7-12 kts.
- High Temps:** **N of Morgan's Point:** Low 90s F. **S of Morgan's Point:** Mid 80s F
- Visibility:** Not anticipating any fog concerns for THU.

Precip Image: 1 PM CT



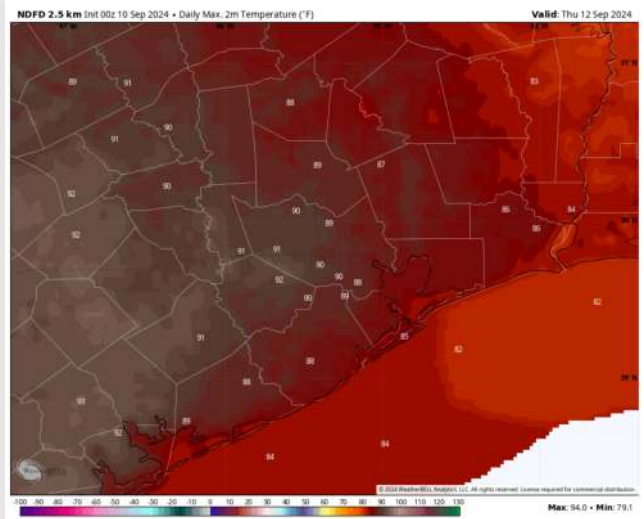
Wind Speed:

3 PM CT



High Temps Thursday

High Temps Thursday



Houston Pilots: FRI. 9/13/2024



Forecast Discussion

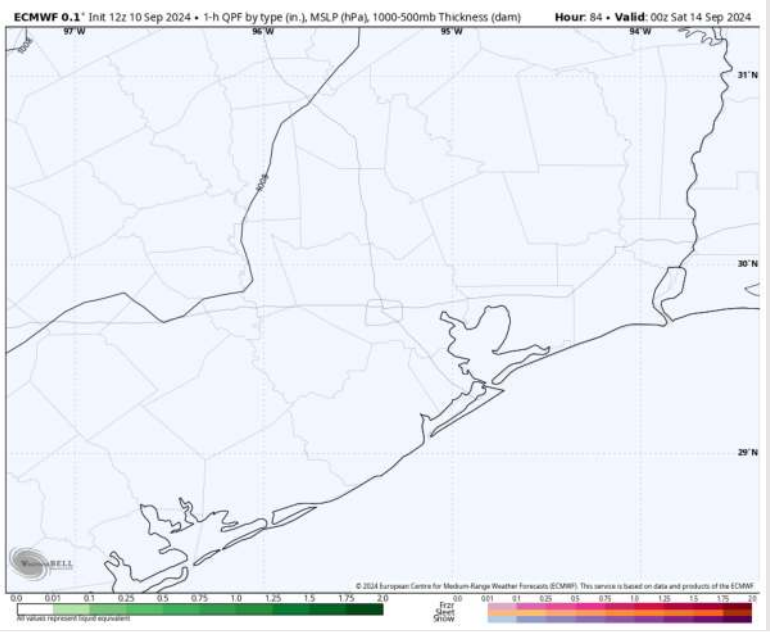
Precip: Favoring dry conditions for Friday.

Wind: Winds will begin the day variable before shifting to out of the S/SW after 2 PM and for the rest of Friday. **N of Morgan's Point:** Winds at 3-8 kts throughout the day. **S of Morgan's Point:** Winds will be 4-9 kts through 4 PM before slightly increasing to 7-12 kts the rest of the day Friday.

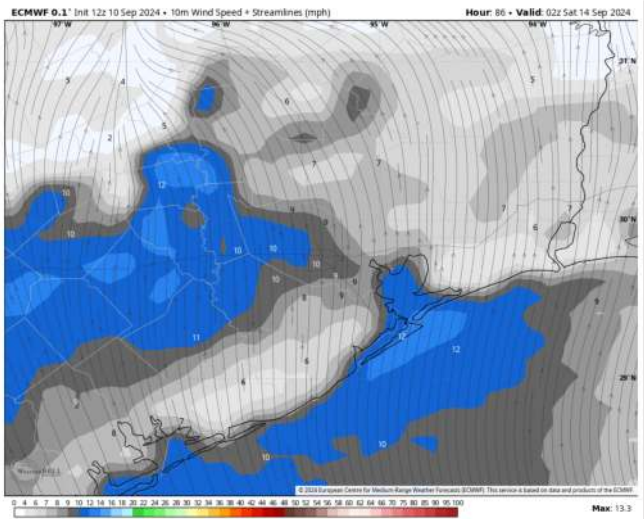
High Temps: **N of Morgan's Point:** Low 90s F. **S of Morgan's Point:** Mid 80s F.

Visibility: Not favoring any fog concerns for Friday.

Precip Image: 7 PM CT

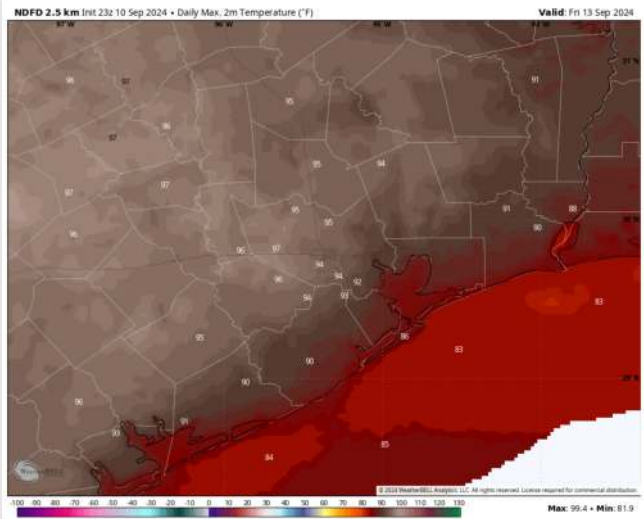


Wind Speed 9 PM CT



Wind Speed
9 PM CT

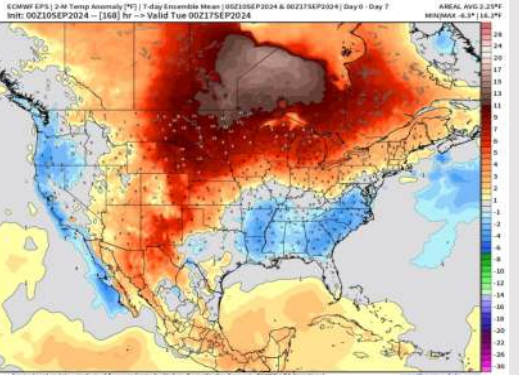
High Temps Friday



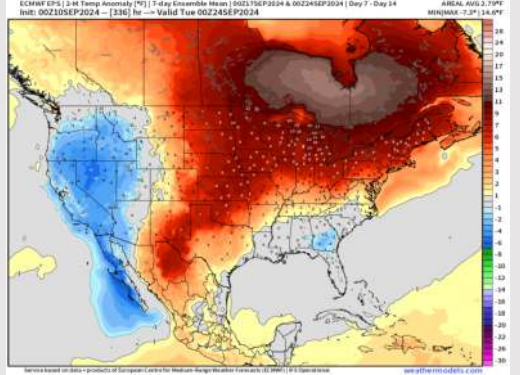
High Temps
Friday

Houston Pilots: 9/11/24

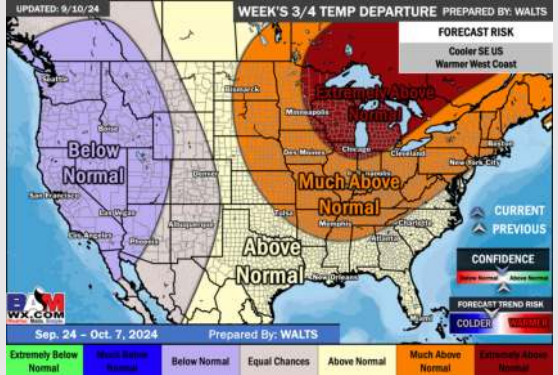
Next 7 Day Temperature Departure



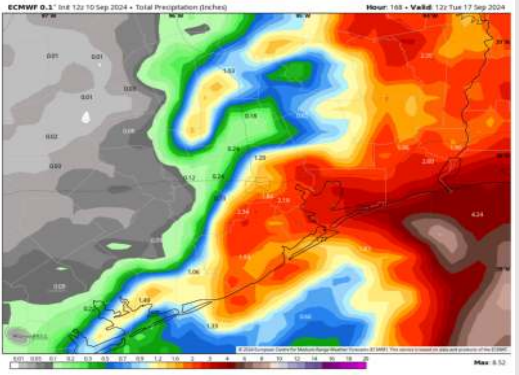
8-14 Day Temperature Departure



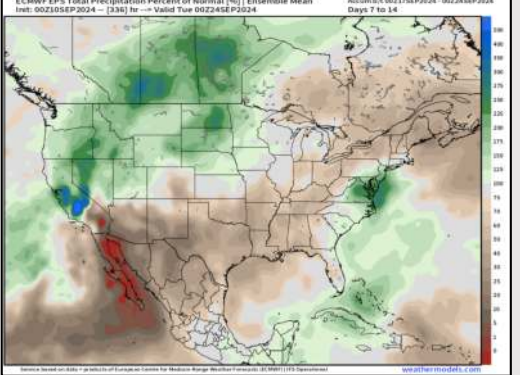
15-30 Day Temperature Departure



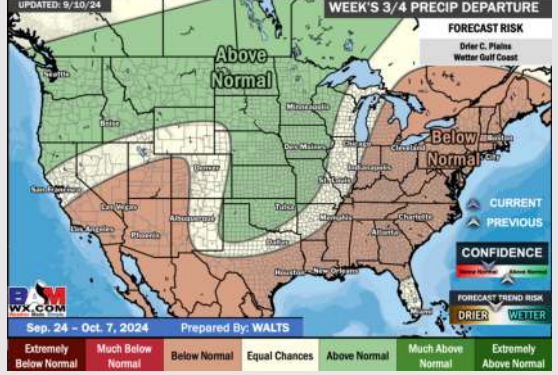
Next 7 Day Total Precipitation



8-14 Day % of Average Precip.



15-30 Day % of Average Precip.



- Temps are expected to be near normal for the week 1 timeframe. Hurricane Francine is expected to bring scattered showers/storms for all Stations through today.
- Near to slightly above normal temperatures are favored for week 2 with below normal rain chances. Tropical activity threats for late Week 1 / early Week 2 and beyond will continue to be monitored.
- Above normal temperatures and below normal precipitation chances are expected for the weeks 3/4 timeframe.