

Houston Pilots Tropical Update

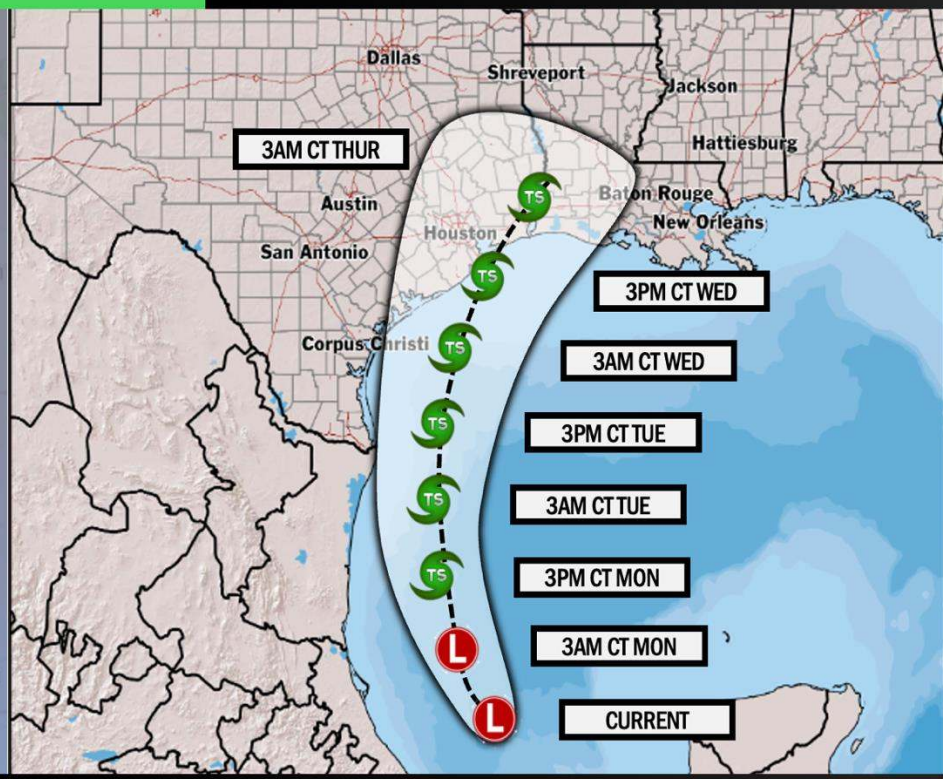


Potential Tropical Cyclone Six

TROPICAL INSIGHT

3:20 PM CT Sunday, September 8, 2024

Forecaster: Lowry



TIMING: SUN PM through THUR AM

FORECAST NOTES:

- ✓ An area of disorganized showers and storms are favored to organize into next week and become a tropical storm.
- ✓ Overall track trend has slowly shifted W to along the SE coast of Texas. Exact track details will need ironed out.



Houston Pilots Forecast Package



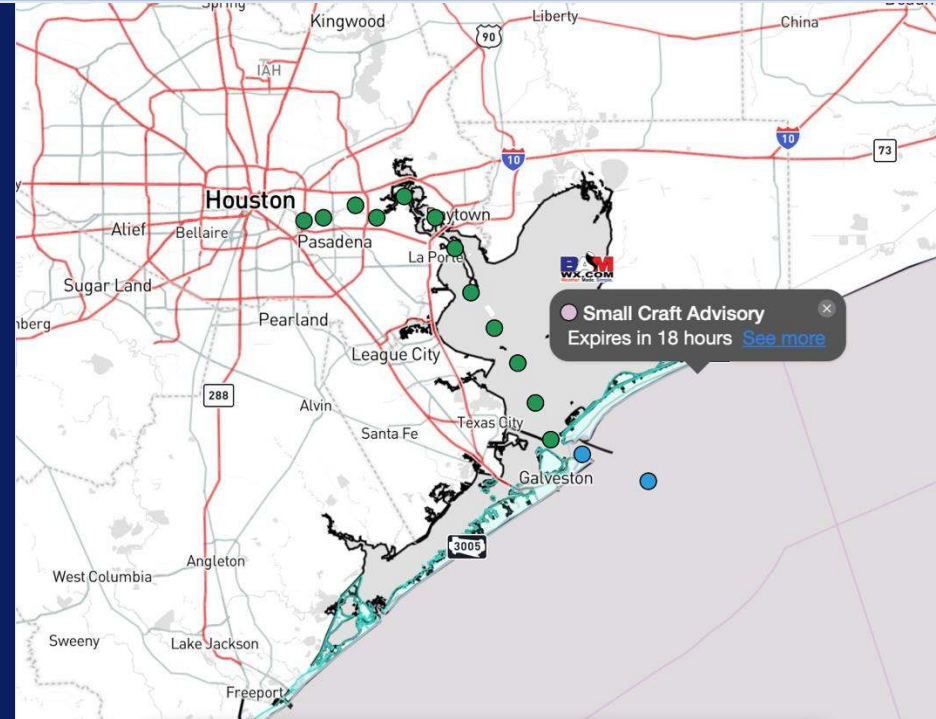
Updated: 5:00 PM CT

Sunday, September 8, 2024

Forecaster: Jonathan Kipper

Weather Headlines

- **Whiskey Port Conditions are in effect (see Trigger Slide below)**
- Wave heights will gradually decrease into MON AM, however, anticipating wave heights to surpass 6 feet WED. See wave height slide for more info.
- Slightly elevated winds will continue throughout the weekend, especially S of Station 11/12.
- **Tropical System Video Update**



Current Radar: 5:00 PM CT



As always, please do not hesitate to reach out to us with any forecast questions via the chat option on Clarity or our on-call number, **(317)-560-8122** press 1 for forecast questions.

Houston Pilots Port Trigger Update

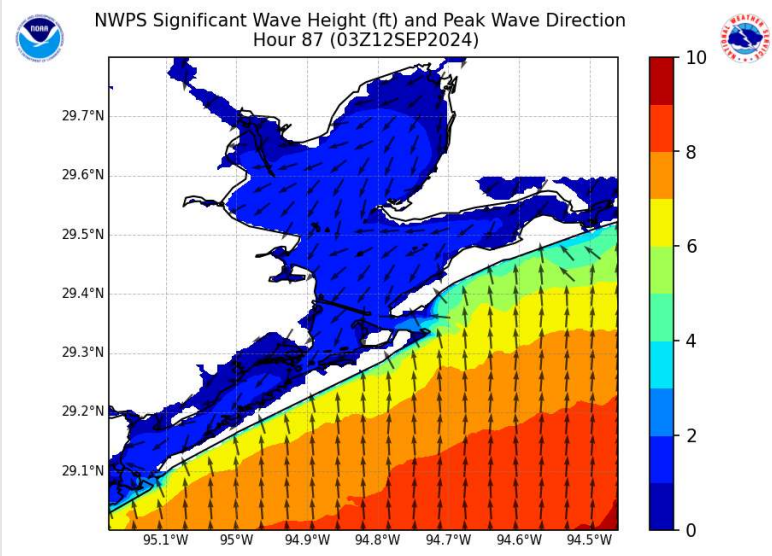


Port Condition	34 KTS+ Sustained Wind Trigger Reached at:	6 Foot Wave Trigger Reached at:	Time Remaining/Trigger Ends At:
Victor	---	---	N/A
Whiskey	Current	N/A	N/A
X-Ray	10 AM CT MON	10 AM CT MON	10 AM CT TUE
Yankee	10 AM CT TUE	10 AM CT TUE	10 PM CT TUE
Zulu	10 PM CT TUE	10 PM CT TUE	12 AM CT THU

Port Condition	Trigger Definition	Trigger Reached?
Victor	Hurricane entering/developing in Gulf of Mexico that's a threat to the area	Past
Whiskey	72 hours prior to predicted sustained winds of 34+ KTS	Yes
X-Ray	48 hours prior to predicted sustained winds of 34+ KTS or 6' wave height	No
Yankee	24 hours prior to predicted sustained winds of 34+ KTS or 6' wave height	No
Zulu	12 hours prior to predicted sustained winds of 34+ KTS or 6' wave height	No

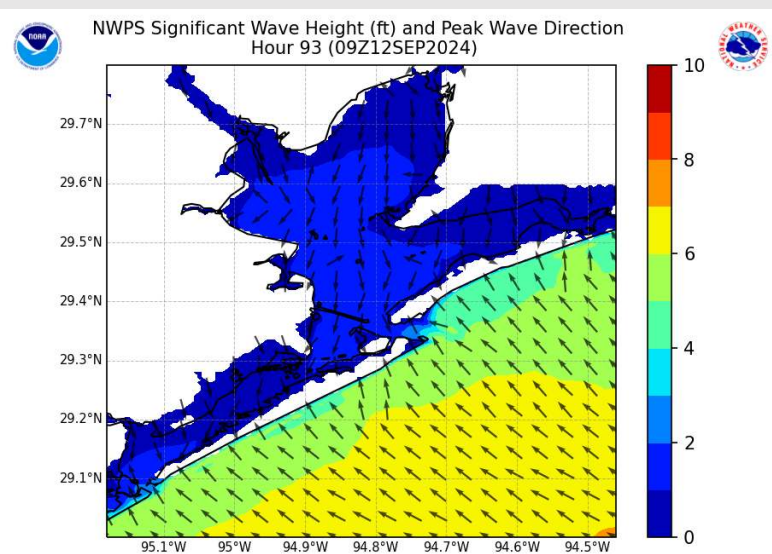
NOTES: Potential tropical cyclone 6 has designated W of the Yucatan Peninsula. It is expected to increase into a Tropical Storm/Hurricane as it works northward over the next ~72 hours. Currently favoring direct landfall just NE of the Houston/Galveston area, however still expecting winds of 34+ kts and wave heights of 6+ ft for WED.

Wave Height Forecast Update



6 PM CT WED

Monitoring for wave heights to increase WED as a tropical storm works into the area. Expected to be at/above 4 ft ~7 AM CT WED.

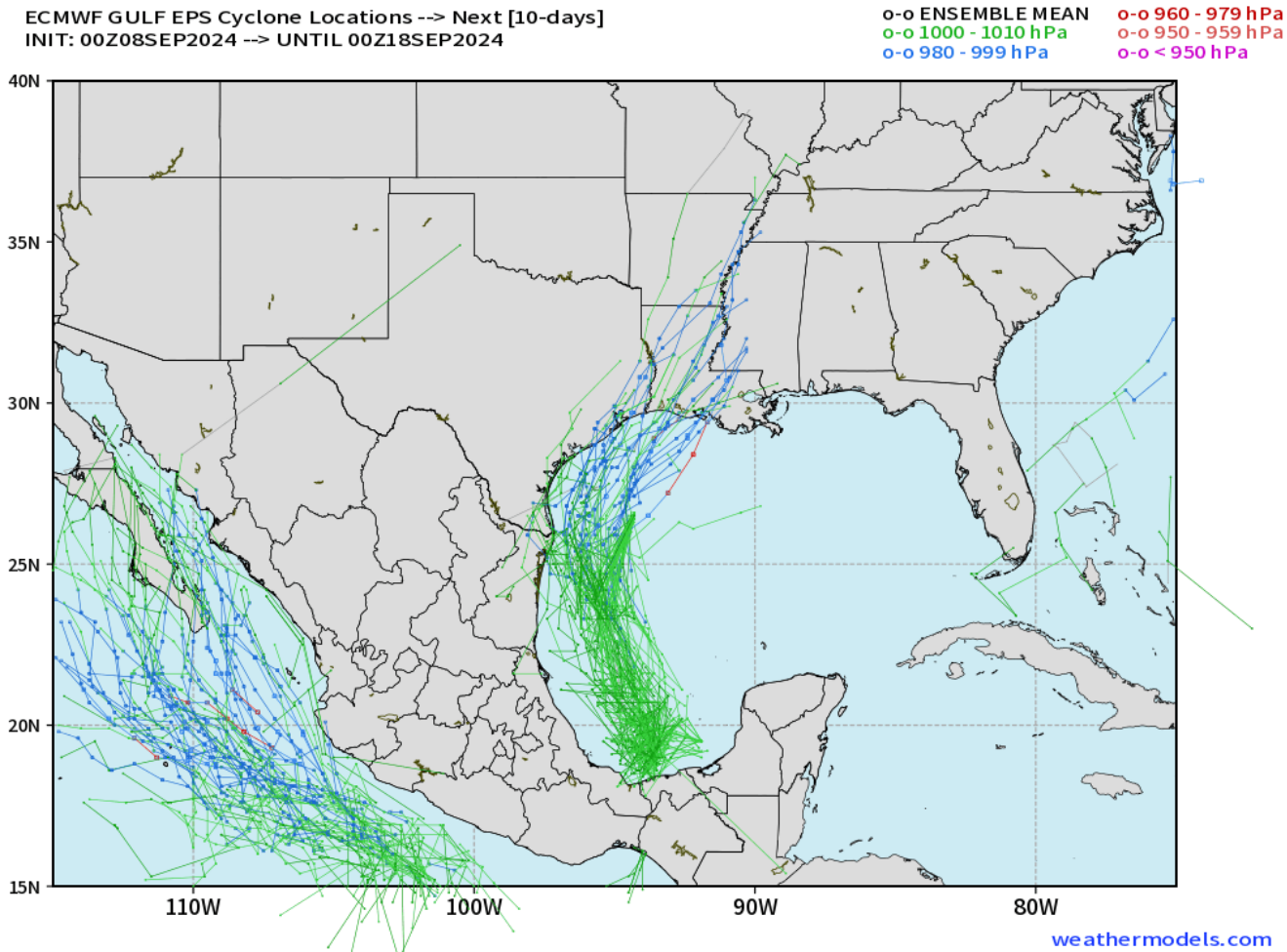


12 AM CT THU

Heights of 6-7 ft will be possible for Stations 11/12 and the Boarding Station by 6 PM CT WED and remain there through 12 AM CT THU.

Houston Pilots Tropical Update

European Model Next 10 Days - Tropical Tracks



Monitoring another wave that could create impacts next WED (located near the Yucatan now).

A hurricane is not expected with this but there is high amounts of uncertainty concerning track/intensity.

Houston Pilots Visibility Chart (miles)



Forecast Confidence



Visibility	Sun 2 pm	Sun 3 pm	Sun 4 pm	Sun 5 pm	Sun 6 pm	Sun 7 pm	Sun 8 pm	Sun 9 pm	Sun 10 pm	Sun 11 pm	Mon 12 am	Mon 1 am	Mon 2 am	Mon 3 am	Mon 4 am	Mon 5 am	Mon 6 am	Mon 7 am	Mon 8 am	Mon 9 am	Mon 10 am	Mon 11 am	Mon 12 pm	Mon 1 pm
Houston Pilots N - 610 Bridge	10.1	10.1	10.1	10.1	10.1	10.1	10.1	10.1	10.1	10.1	10.1	10.1	10.1	10.1	10.1	10.1	10.1	10.1	10.1	10.1	10.1	10.1	10.1	10.1
Houston Pilots M - Kinder 1	10.1	10.1	10.1	10.1	10.1	10.1	10.1	10.1	10.1	10.1	10.1	10.1	10.1	10.1	10.1	10.1	10.1	10.1	10.1	10.1	10.1	10.1	10.1	10.1
Houston Pilots L - Greens Bayou	10.1	10.1	10.1	10.1	10.1	10.1	10.1	10.1	10.1	10.1	10.1	10.1	10.1	10.1	10.1	10.1	10.1	10.1	10.1	10.1	10.1	10.1	10.1	10.1
Houston Pilots K - Shell Crude	10.1	10.1	10.1	10.1	10.1	10.1	10.1	10.1	10.1	10.1	10.1	10.1	10.1	10.1	10.1	10.1	10.1	10.1	10.1	10.1	10.1	10.1	10.1	10.1
Houston Pilots J - Lynchburg Ferries	10.1	10.1	10.1	10.1	10.1	10.1	10.1	10.1	10.1	10.1	10.1	10.1	10.1	10.1	10.1	10.1	10.1	10.1	10.1	10.1	10.1	10.1	10.1	10.1
Houston Pilots I - Exxon 3	10.1	10.1	10.1	10.1	10.1	10.1	10.1	10.1	10.1	10.1	10.1	10.1	10.1	10.1	10.1	10.1	10.1	10.1	10.1	10.1	10.1	10.1	10.1	10.1
Houston Pilots H - Morgans Point	10.1	10.1	10.1	10.1	10.1	10.1	10.1	10.1	10.1	10.1	10.1	10.1	10.1	10.1	10.1	10.1	10.1	10.1	10.1	10.1	10.1	10.1	10.1	10.1
Houston Pilots G - 75/76	10.1	10.1	10.1	10.1	10.1	10.1	10.1	10.1	10.1	10.1	10.1	10.1	10.1	10.1	10.1	10.1	10.1	10.1	10.1	10.1	10.1	10.1	10.1	12
Houston Pilots F - 63/64	10.1	10.1	10.1	10.1	10.1	10.1	10.1	10.1	10.1	10.1	10.1	10.1	10.1	10.1	10.1	10.1	10.1	10.1	10.1	10.1	10.1	10.1	10.1	12
Houston Pilots E - 51/52	10.1	10.1	10.1	10.1	10.1	10.1	10.1	10.1	10.1	10.1	10.1	10.1	10.1	10.1	10.1	10.1	10.1	10.1	10.1	10.1	10.1	10.1	10.1	12
Houston Pilots D - 37/38	10.1	10.1	10.1	10.1	10.1	10.1	10.1	10.1	10.1	10.1	10.1	10.1	10.1	10.1	10.1	10.1	10.1	10.1	10.1	10.1	10.1	10.1	10.1	12
Houston Pilots C - 25/26	10.1	10.1	10.1	10.1	10.1	10.1	10.1	10.1	10.1	10.1	10.1	10.1	10.1	10.1	10.1	10.1	10.1	10.1	10.1	10.1	10.1	10.1	10.1	12
Houston Pilots B - 11/12	10.1	10.1	10.1	10.1	10.1	10.1	10.1	10.1	10.1	10.1	10.1	10.1	10.1	10.1	10.1	10.1	10.1	10.1	10.1	10.1	10.1	10.1	10.1	12
Houston Pilots A - 1 & 2 Bravo	10.1	10.1	10.1	10.1	10.1	10.1	10.1	10.1	10.1	10.1	10.1	10.1	10.1	10.1	10.1	10.1	10.1	10.1	10.1	10.1	10.1	10.1	10.1	12

NOTE: This is automated data that may/may not agree with the official BAM thinking that's found on the daily slides or special visibility report slides. This data should be used as a guide only

Houston Pilots Wind Chart



Forecast Confidence

Above Normal Below Normal

Sustained wind 10 Knots

Gusts 15 Knots

Wind from the SE

Example

10

15

↖

Wind	Sun 2 pm	Sun 3 pm	Sun 4 pm	Sun 5 pm	Sun 6 pm	Sun 7 pm	Sun 8 pm	Sun 9 pm	Sun 10 pm	Sun 11 pm	Mon 12 am	Mon 1 am	Mon 2 am	Mon 3 am	Mon 4 am	Mon 5 am	Mon 6 am	Mon 7 am	Mon 8 am	Mon 9 am	Mon 10 am	Mon 11 am	Mon 12 pm	Mon 1 pm	
Houston Pilots N - 610 Bridge	10 23 ↘	12 24 ↘	12 23 ↘	10 22 ↘	10 21 ↘	10 21 ↘	9 17 ↘	9 18 ↘	9 17 ↘	9 18 ↘	10 18 ↘	10 20 ↘	10 20 ↘	10 20 ↘	10 20 ↘	10 20 ↘	10 20 ↘	10 20 ↘	10 20 ↘	10 20 ↘	10 20 ↘	10 20 ↘	10 20 ↘	9 18 ↘	
Houston Pilots M - Kinder 1	12 23 ↘	12 24 ↘	12 23 ↘	10 22 ↘	10 21 ↘	10 21 ↘	9 17 ↘	9 18 ↘	9 18 ↘	9 18 ↘	9 20 ↘	9 20 ↘	10 20 ↘	10 20 ↘	10 20 ↘	10 20 ↘	10 20 ↘	10 20 ↘	10 18 ↘	10 20 ↘	10 20 ↘	10 20 ↘	10 20 ↘	10 20 ↘	9 18 ↘
Houston Pilots L - Greens Bayou	12 22 ↘	12 23 ↘	12 23 ↘	10 22 ↘	10 21 ↘	10 20 ↘	8 17 ↘	8 18 ↘	8 18 ↘	9 18 ↘	9 20 ↘	9 20 ↘	9 21 ↘	9 21 ↘	9 21 ↘	9 20 ↘	9 20 ↘	10 20 ↘	9 20 ↘	10 20 ↘	10 20 ↘	10 20 ↘	10 20 ↘	9 20 ↘	9 18 ↘
Houston Pilots K - Shell Crude	12 23 ↘	12 23 ↘	12 23 ↘	10 22 ↘	10 21 ↘	10 20 ↘	8 17 ↘	8 18 ↘	9 18 ↘	9 20 ↘	9 20 ↘	9 21 ↘	10 21 ↘	9 21 ↘	9 21 ↘	9 21 ↘	10 21 ↘	10 21 ↘	10 20 ↘	10 21 ↘	10 20 ↘	10 20 ↘	10 20 ↘	9 20 ↘	9 18 ↘
Houston Pilots J - Lynchburg Ferries	12 22 ↘	12 23 ↘	12 22 ↘	10 21 ↘	10 21 ↘	10 20 ↘	8 17 ↘	8 18 ↘	8 17 ↘	8 18 ↘	8 20 ↘	8 20 ↘	9 21 ↘	8 21 ↘	9 21 ↘	9 21 ↘	9 21 ↘	9 21 ↘	9 20 ↘	10 21 ↘	10 21 ↘	10 20 ↘	10 20 ↘	9 18 ↘	9 17 ↘
Houston Pilots I - Exxon 3	15 23 ↘	15 24 ↘	15 23 ↘	14 22 ↘	14 22 ↘	14 21 ↘	13 18 ↘	14 21 ↘	15 21 ↘	15 22 ↘	16 23 ↘	16 23 ↘	17 24 ↘	17 24 ↘	17 24 ↘	17 24 ↘	17 24 ↘	16 23 ↘	15 23 ↘	15 22 ↘	15 22 ↘	15 22 ↘	14 21 ↘	13 20 ↘	13 20 ↘
Houston Pilots H - Morgans Point	15 23 ↘	15 24 ↘	15 23 ↘	14 22 ↘	14 22 ↘	14 21 ↘	13 20 ↘	14 21 ↘	15 21 ↘	15 22 ↘	16 23 ↘	17 24 ↘	17 24 ↘	17 24 ↘	17 24 ↘	17 24 ↘	17 24 ↘	17 24 ↘	16 23 ↘	15 23 ↘	15 22 ↘	15 22 ↘	14 22 ↘	13 21 ↘	13 20 ↘
Houston Pilots G - 75/76	15 24 ↘	16 24 ↘	15 24 ↘	15 23 ↘	15 23 ↘	15 22 ↘	15 21 ↘	15 22 ↘	16 23 ↘	17 24 ↘	18 25 ↘	18 25 ↘	20 26 ↘	20 26 ↘	20 26 ↘	20 26 ↘	20 26 ↘	20 26 ↘	18 25 ↘	17 25 ↘	17 24 ↘	17 24 ↘	15 23 ↘	15 23 ↘	13 21 ↘
Houston Pilots F - 63/64	15 24 ↘	16 24 ↘	16 25 ↘	15 24 ↘	15 24 ↘	15 22 ↘	15 22 ↘	15 22 ↘	17 24 ↘	17 24 ↘	18 25 ↘	18 25 ↘	18 26 ↘	20 26 ↘	20 26 ↘	20 26 ↘	20 28 ↘	20 28 ↘	18 26 ↘	17 25 ↘	17 25 ↘	17 24 ↘	16 23 ↘	15 22 ↘	14 22 ↘
Houston Pilots E - 51/52	16 24 ↘	16 24 ↘	16 25 ↘	15 24 ↘	15 24 ↘	15 23 ↘	15 22 ↘	16 23 ↘	17 24 ↘	18 25 ↘	20 25 ↘	20 26 ↘	20 26 ↘	20 26 ↘	20 28 ↘	20 28 ↘	20 28 ↘	20 28 ↘	18 26 ↘	18 26 ↘	17 25 ↘	17 25 ↘	17 24 ↘	15 23 ↘	14 23 ↘
Houston Pilots D - 37/38	16 24 ↘	17 24 ↘	17 25 ↘	16 25 ↘	16 24 ↘	15 23 ↘	15 23 ↘	16 23 ↘	17 25 ↘	18 25 ↘	20 26 ↘	20 26 ↘	20 26 ↘	20 28 ↘	20 28 ↘	20 28 ↘	20 28 ↘	20 28 ↘	18 26 ↘	18 26 ↘	17 26 ↘	17 26 ↘	16 25 ↘	15 24 ↘	15 23 ↘
Houston Pilots C - 25/26	16 24 ↘	17 25 ↘	17 26 ↘	16 25 ↘	16 24 ↘	15 23 ↘	15 23 ↘	16 24 ↘	17 26 ↘	17 26 ↘	18 26 ↘	18 26 ↘	18 26 ↘	18 28 ↘	20 28 ↘	20 28 ↘	20 29 ↘	20 28 ↘	18 28 ↘	18 28 ↘	17 26 ↘	17 26 ↘	16 25 ↘	16 24 ↘	15 24 ↘
Houston Pilots B - 11/12	15 25 ↘	16 25 ↘	16 26 ↘	16 25 ↘	15 24 ↘	15 24 ↘	14 23 ↘	15 24 ↘	15 26 ↘	16 26 ↘	16 26 ↘	16 26 ↘	17 28 ↘	17 28 ↘	17 28 ↘	17 28 ↘	17 29 ↘	17 28 ↘	17 28 ↘	17 28 ↘	17 26 ↘	17 26 ↘	16 25 ↘	15 24 ↘	15 24 ↘
Houston Pilots A - 1 & 2 Bravo	18 28 ↘	18 29 ↘	18 29 ↘	18 28 ↘	18 28 ↘	17 28 ↘	17 26 ↘	18 28 ↘	18 28 ↘	20 29 ↘	20 30 ↘	20 30 ↘	20 29 ↘	21 30 ↘	21 31 ↘	21 31 ↘	22 31 ↘	21 31 ↘	21 30 ↘	21 30 ↘	21 30 ↘	20 30 ↘	20 29 ↘	18 28 ↘	17 26 ↘

NOTE: This is automated data that may/may not agree with the official BAM thinking that's found on the daily slides. This data should be used as a guide only.

Houston Pilots: SUN. 9/8/2024



Forecast Discussion

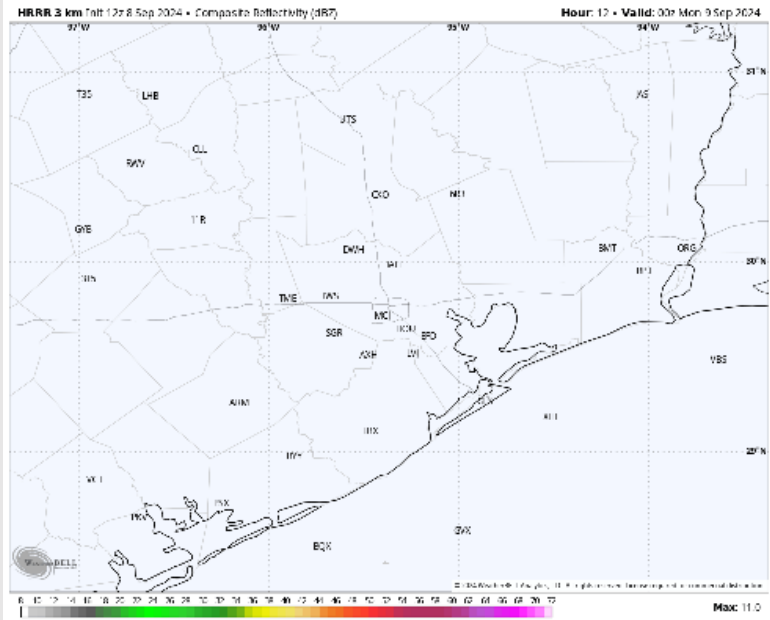
Precip: Favoring dry conditions throughout the remainder of the day.

Wind: Winds will be out of the NE throughout the day. **N of Morgan's Point:** Winds will be at 8 – 13 kts throughout the day. **S of Morgan's Point:** Winds will be 17 – 23 kts throughout the day. **Wind gusts of 22-28 kts will be possible for all stations.**

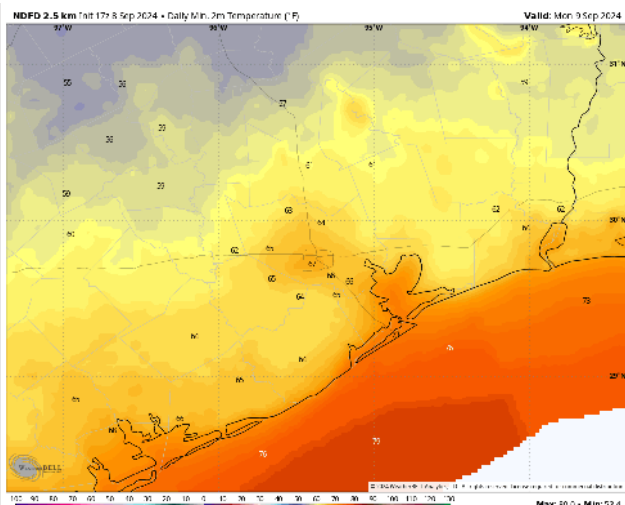
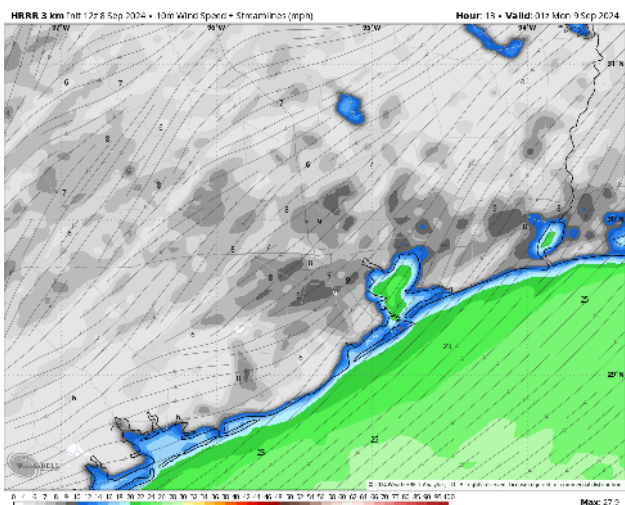
Low Temps: **N of Morgan's Point:** Mid 60s F. **S of Morgan's Point:** Low 70s F.

Visibility: Not anticipating any fog concerns for today.

Precip Image: 7 PM CT



Wind Speed:
8 PM CT



Low Temps
MON AM

Houston Pilots: MON. 9/9/2024



Forecast Discussion

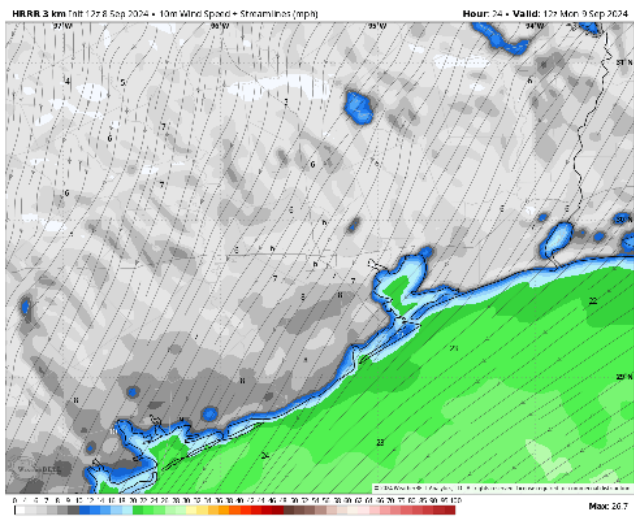
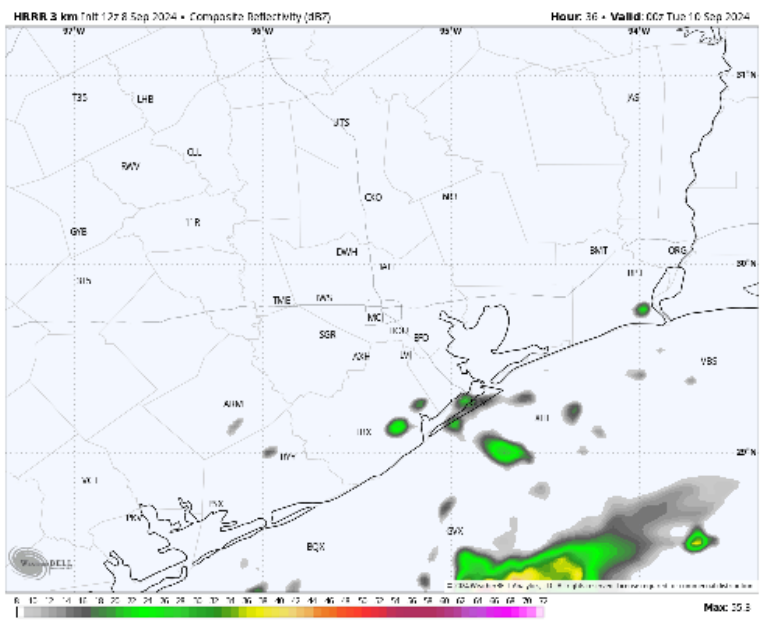
Precip: Favoring scattered to widespread showers/storms to work towards the Boarding Station and Station 11/12 towards 7 PM. Scattered showers/storms will be in play for stations S. of Morgan's Point throughout the overnight hours.

Wind: Winds will be out of the NE throughout MON. **N of Morgan's Point:** Winds will be sustained 6 – 11 kts throughout MON. **S of Morgan's Point:** Winds will be sustained at 12 – 18 kts. **Wind gusts S of station 11/12 of 20-30 kts will be possible**

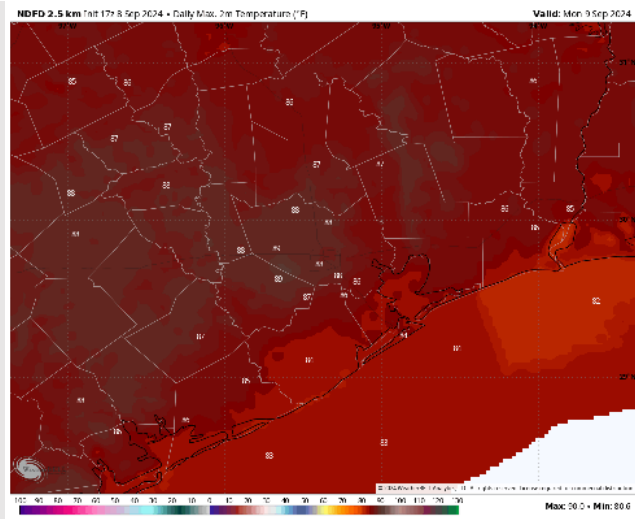
High Temps: **N of Morgan's Point:** Mid to upper 80s F. **S of Morgan's Point:** Low to mid 80s F

Visibility: Not anticipating any fog concerns for Monday, however reduced visibilities will be possible S of Morgan's Point under heavier downpours.

Precip Image: 7 PM CT



Wind Speed:
7 AM CT



High Temps
Monday

Houston Pilots: TUE. 9/10/2024



Forecast Discussion

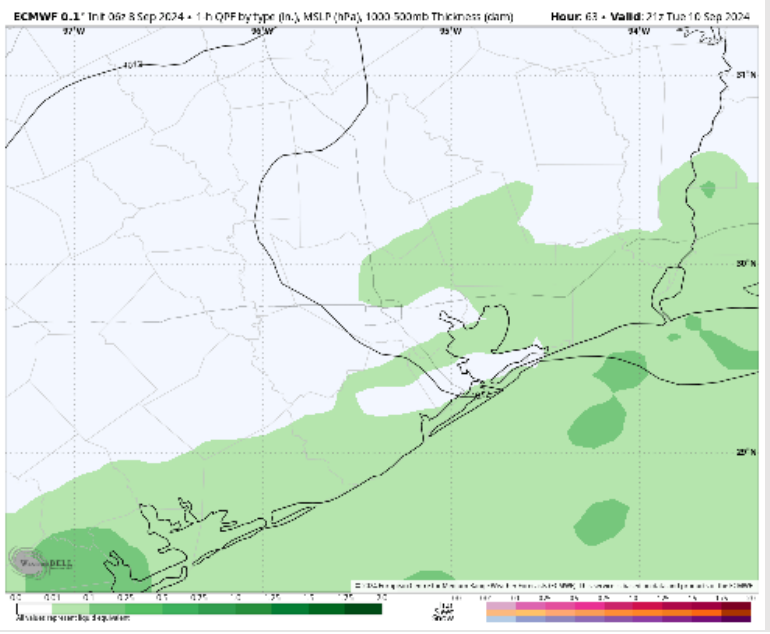
Precip: Favoring scattered to widespread showers/storms to continue at the Boarding Station and Station 11/12 after 12 AM and gradually work N/NW throughout the day, reaching Morgan's Point towards 3 PM.

Wind: Winds will be out of the E/NE for the entire day. **N of Morgan's Point:** Winds at 7 - 12 kts throughout the day. **S of Morgan's Point:** Winds will be sustained at 12 - 20 kts throughout the day. **Gusts up to 25 kts in play throughout the day for Stations S of Morgan's Point.**

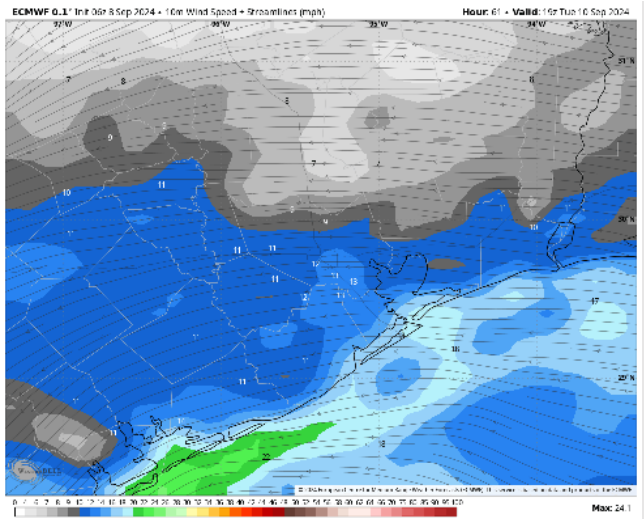
High Temps: **N of Morgan's Point:** Low to mid 80s F. **S of Morgan's Point:** Low 80s F.

Visibility: Not favoring any fog concerns for Tuesday, however visibilities can be reduced under heavy downpours.

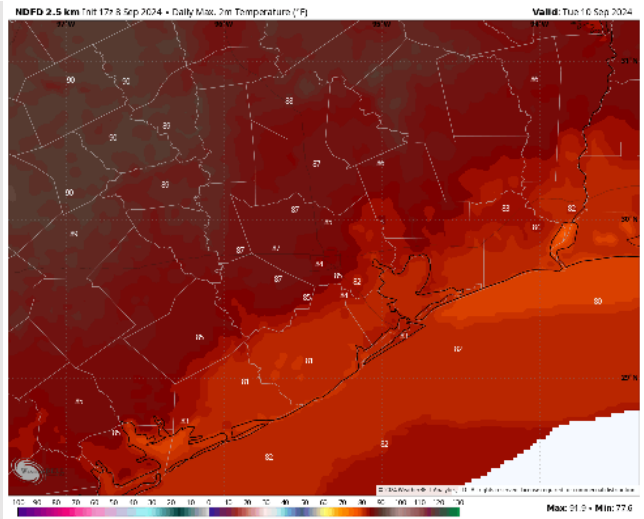
Precip Image: 4 PM CT



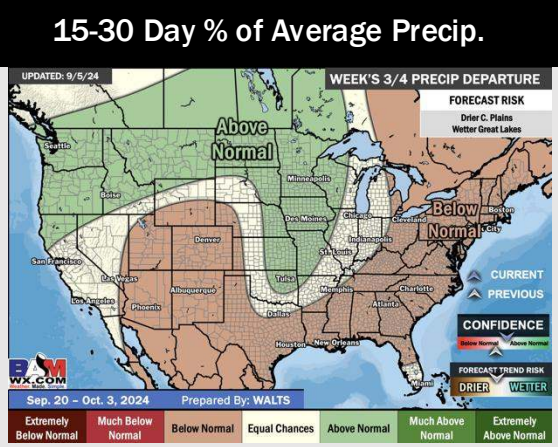
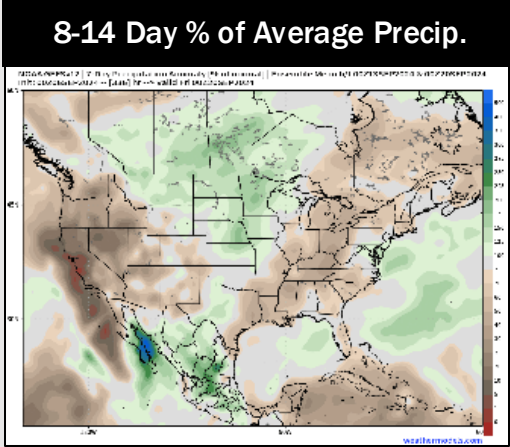
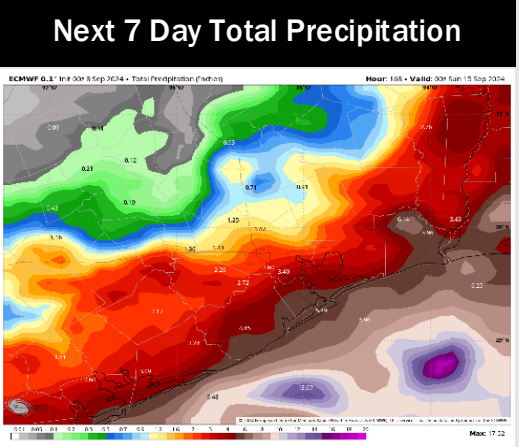
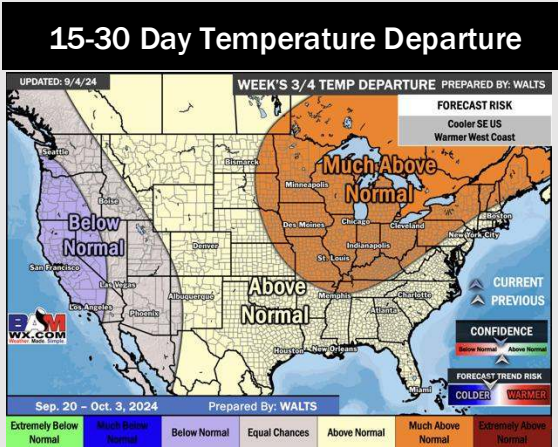
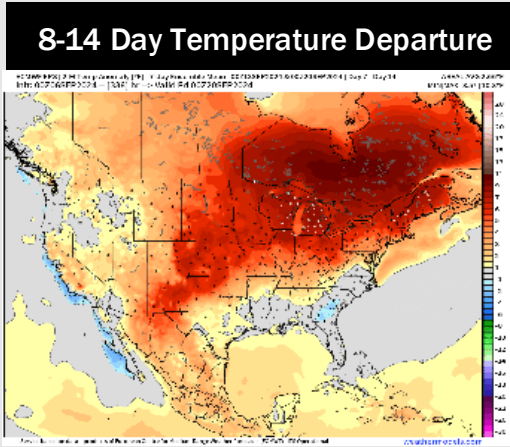
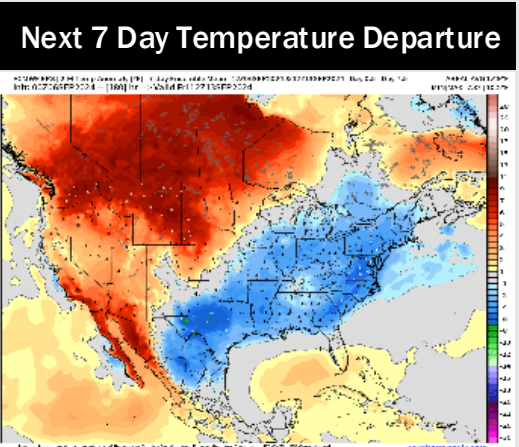
Wind Speed
2 PM CT



High Temps
Tuesday



Houston Pilots: 9/8/24



- Temps are expected to be below normal for the week 1 timeframe. Scattered to widespread rain chances are expected throughout the week, while awaiting potential tropical impacts mid-week.
- Near normal temperatures are favored for week 2 with near to just below normal rain chances. Tropical activity threats for late Week 1 / early Week 2 and beyond will continue to be monitored
- Above normal temperatures and below normal precipitation chances are expected for the weeks 3/4 timeframe.