

Houston Pilots Forecast Package



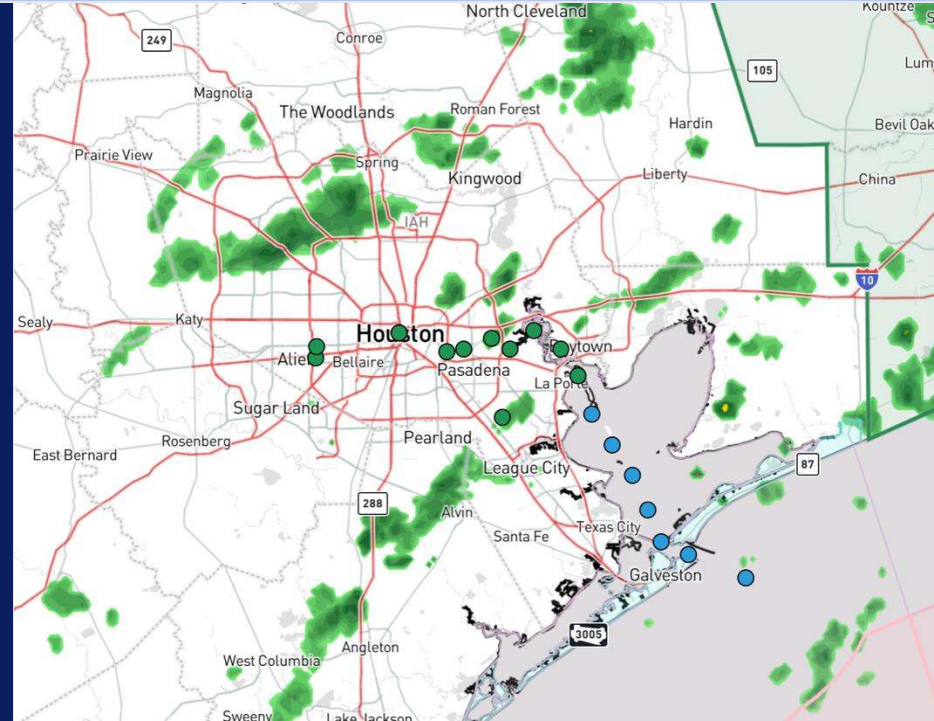
Updated: 2:00 PM CT

Friday, September 6, 2024

Forecaster: Feick

Weather Headlines

- **Due to the increase of winds with the tropical system, Zulu port conditions have been met, albeit borderline.**
- **Monitoring an area of low-pressure of the SW coast of Houston that has slight potential for development into a tropical depression.**
- **Watching for increasing wave heights of 4+ feet this weekend. See wave height slide for more information.**



Current Radar: 2:00 PM CT



As always, please do not hesitate to reach out to us with any forecast questions via the chat option on Clarity or our on-call number, **(317)-560-8122** press 1 for forecast questions.

Houston Pilots Port Trigger Update

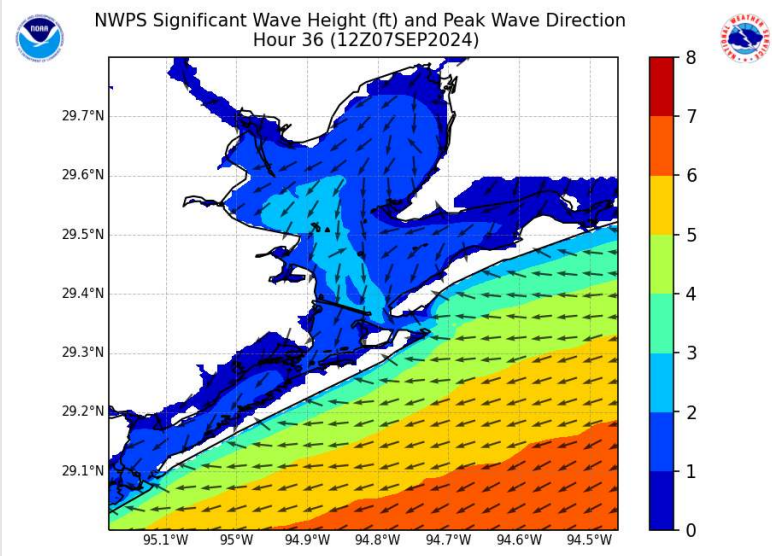


Port Condition	34 KTS+ Sustained Wind Trigger Reached at:	6 Foot Wave Trigger Reached at:	Time Remaining/Trigger Ends At:
Victor	---	---	N/A
Whiskey	---	---	N/A
X-Ray	---	---	N/A
Yankee	---	N/A	N/A
Zulu	Current	N/A	1 PM SAT

Port Condition	Trigger Definition	Trigger Reached?
Victor	Hurricane entering/developing in Gulf of Mexico that's a threat to the area	N/A
Whiskey	72 hours prior to predicted sustained winds of 34+ KTS	N/A
X-Ray	48 hours prior to predicted sustained winds of 34+ KTS or 6' wave height	N/A
Yankee	24 hours prior to predicted sustained winds of 34+ KTS or 6' wave height	N/A
Zulu	12 hours prior to predicted sustained winds of 34+ KTS or 6' wave height	Yes

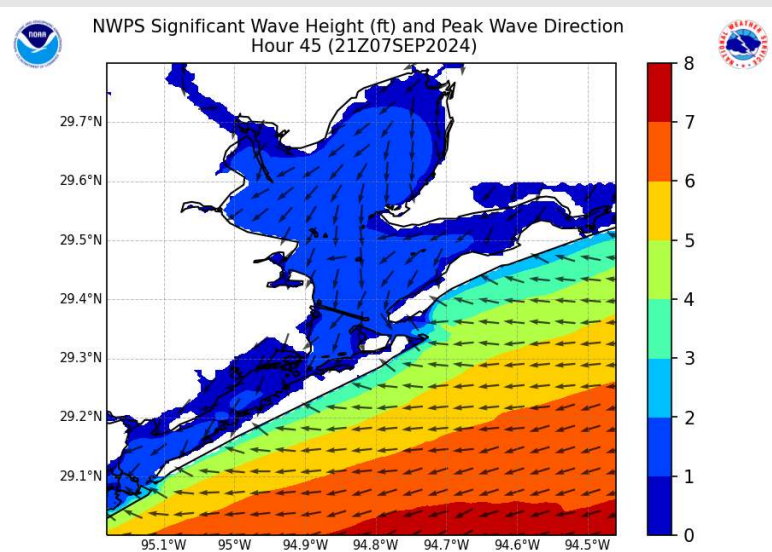
NOTES: 34+ KT wind threat is primarily for the boarding station with a low-end risk for stations 11/12 throughout the listed timeframe.

Wave Height Forecast Update



7 AM CT SAT

We're monitoring the risk of increasing wave heights with the tropical system pushing into the Gulf this weekend, though there is slightly lower confidence.



4 PM CT SAT

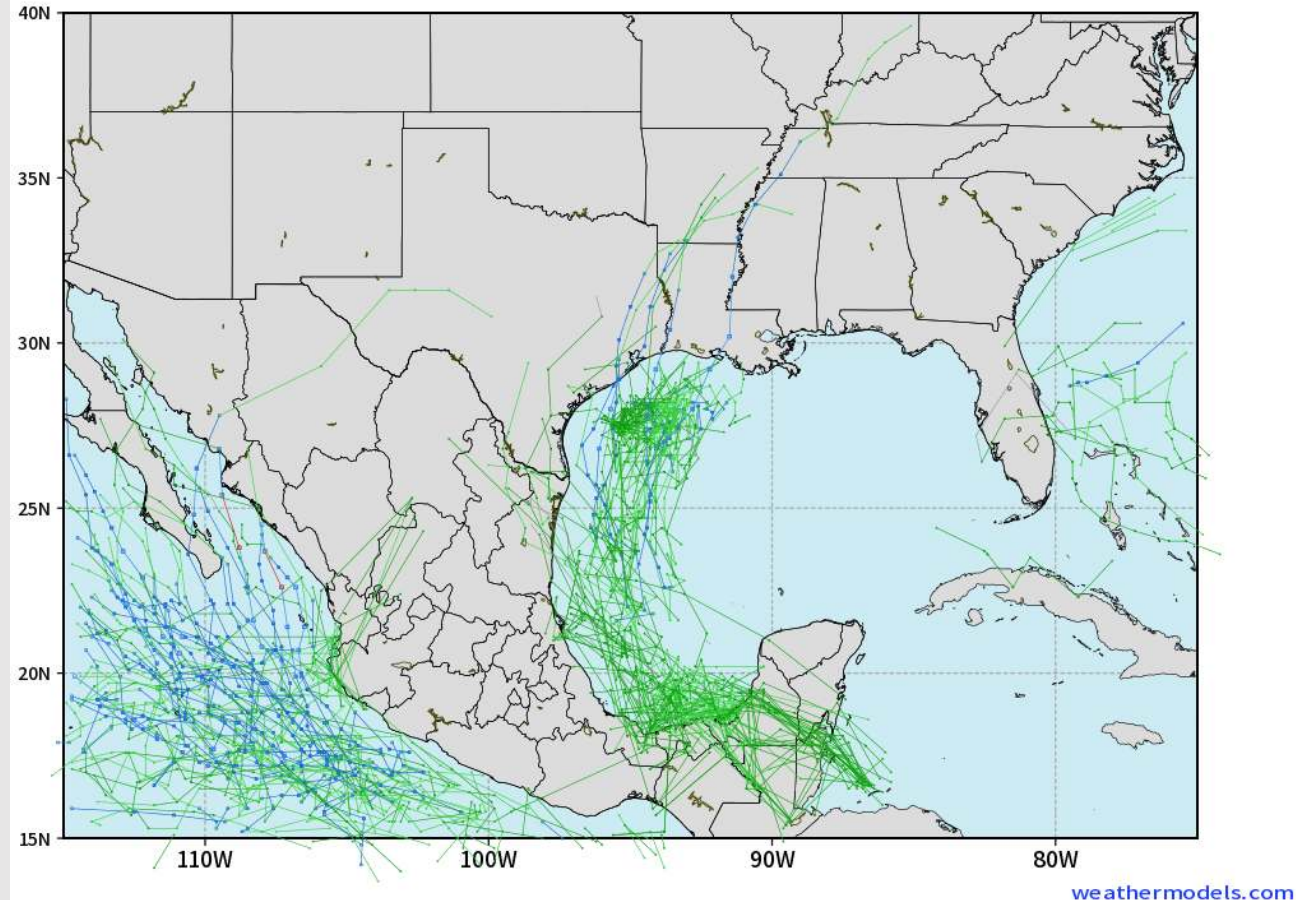
Timeframe to watch for peak wave heights of 4+ feet will be 7 AM Saturday – 4 PM Sunday.

Houston Pilots Tropical Update

European Model Next 10 Days - Tropical Tracks

ECMWF GULF EPS Cyclone Locations --> Next [10-days]
INIT: 00Z06SEP2024 --> UNTIL 00Z16SEP2024

o-o ENSEMBLE MEAN
o-o 1000 - 1010 hPa
o-o 980 - 999 hPa
o-o 960 - 979 hPa
o-o 950 - 959 hPa
o-o < 950 hPa



Industry Energy according to our TOS (if5580f5Z0017G602)

Brief strengthening into a tropical depression cannot be ruled out but further development into a tropical storm or hurricane is not favored at this time.

Beyond this wave, another wave is being monitored that could create impacts next TUE/ WED (located near the Yucatan now). A hurricane is not expected with this but there is high amounts of uncertainty concerning track/ intensity.

Houston Pilots Visibility Chart (miles)



Forecast Confidence



Visibility	Fri 2 pm	Fri 3 pm	Fri 4 pm	Fri 5 pm	Fri 6 pm	Fri 7 pm	Fri 8 pm	Fri 9 pm	Fri 10 pm	Fri 11 pm	Sat 12 am	Sat 1 am	Sat 2 am	Sat 3 am	Sat 4 am	Sat 5 am	Sat 6 am	Sat 7 am	Sat 8 am	Sat 9 am	Sat 10 am	Sat 11 am	Sat 12 pm	Sat 1 pm
Houston Pilots N - 610 Bridge	7.9	9	7.9	6.9	6.9	7.9	6.9	6.9	6.9	6.9	7.9	7.9	7.9	9	10.1	10.1	10.1	10.1	10.1	9	10.1	10.1	10.1	10.1
Houston Pilots M - Kinder 1	7.9	9	9	7.9	7.9	9	6.9	7.9	7.9	6.9	7.9	9	9	9	10.1	10.1	10.1	10.1	10.1	9	10.1	10.1	10.1	10.1
Houston Pilots L - Greens Bayou	9	10.1	10.1	7.9	9	10.1	9	7.9	7.9	6.9	9	9	10.1	10.1	10.1	10.1	10.1	10.1	10.1	9	10.1	10.1	10.1	10.1
Houston Pilots K - Shell Crude	9	10.1	10.1	7.9	9	10.1	9	9	9	7.9	9	9	10.1	10.1	10.1	10.1	10.1	10.1	10.1	9	10.1	10.1	10.1	10.1
Houston Pilots J - Lynchburg Ferries	9	10.1	10.1	7.9	9	10.1	9	7.9	7.9	6.9	9	9	10.1	10.1	10.1	10.1	10.1	10.1	10.1	9	10.1	10.1	10.1	10.1
Houston Pilots I - Exxon 3	9	10.1	10.1	7.9	9	10.1	9	9	9	7.9	9	10.1	10.1	10.1	10.1	10.1	10.1	10.1	10.1	9	10.1	10.1	10.1	10.1
Houston Pilots H - Morgans Point	9	10.1	10.1	9	9	10.1	10.1	9	9	7.9	9	10.1	10.1	10.1	10.1	10.1	10.1	10.1	10.1	9	10.1	10.1	10.1	10.1
Houston Pilots G - 75/76	10.1	9	7.9	7.9	6.9	6.9	10.1	10.1	10.1	10.1	9	9	9	9	9	10.1	10.1	10.1	10.1	10.1	10.1	10.1	10.1	12
Houston Pilots F - 63/64	9	9	7.9	7.9	6.9	6.9	10.1	10.1	10.1	10.1	9	9	9	7.9	9	10.1	10.1	10.1	10.1	10.1	10.1	10.1	10.1	12
Houston Pilots E - 51/52	7.9	6.9	6.9	6.9	5.9	6.9	10.1	10.1	10.1	10.1	9	9	7.9	7.9	7.9	10.1	10.1	10.1	10.1	9	10.1	10.1	10.1	12
Houston Pilots D - 37/38	7.9	6.9	6.9	6.9	5.9	6.9	10.1	10.1	10.1	10.1	9	9	7.9	7.9	7.9	10.1	10.1	10.1	10.1	9	10.1	10.1	10.1	12
Houston Pilots C - 25/26	7.9	7.9	6.9	7.9	5.9	6.9	9	10.1	10.1	9	7.9	9	7.9	6.9	7.9	10.1	10.1	10.1	10.1	9	10.1	10.1	10.1	12
Houston Pilots B - 11/12	6.9	6.9	6.9	6.9	5.9	5.9	9	10.1	10.1	9	9	7.9	6.9	6.9	6.9	10.1	10.1	10.1	10.1	7.9	10.1	10.1	10.1	12
Houston Pilots A - 1 & 2 Bravo	4.9	5.9	4.9	6.9	4.9	5.9	9	10.1	10.1	10.1	9	7.9	6.9	6.9	6.9	9	10.1	10.1	10.1	7.9	10.1	10.1	10.1	12

NOTE: This is automated data that may/may not agree with the official BAM thinking that's found on the daily slides or special visibility report slides. This data should be used as a guide only

Houston Pilots Wind Chart



Forecast Confidence

Above Normal Below Normal

Sustained wind 10 Knots

Gusts 15 Knots

Wind from the SE

Example

10

15

↙

Wind	Fri 2 pm	Fri 3 pm	Fri 4 pm	Fri 5 pm	Fri 6 pm	Fri 7 pm	Fri 8 pm	Fri 9 pm	Fri 10 pm	Fri 11 pm	Sat 12 am	Sat 1 am	Sat 2 am	Sat 3 am	Sat 4 am	Sat 5 am	Sat 6 am	Sat 7 am	Sat 8 am	Sat 9 am	Sat 10 am	Sat 11 am	Sat 12 pm	Sat 1 pm
Houston Pilots N - 610 Bridge	13 25 ✓	14 28 ✓	14 28 ✓	13 28 ✓	13 26 ✓	13 26 ✓	13 24 ✓	13 25 ✓	13 25 ✓	14 26 ✓	15 26 ✓	14 26 ✓	14 26 ✓	14 25 ✓	14 25 ✓	14 25 ✓	14 25 ✓	14 25 ✓	14 25 ✓	15 26 ✓	15 28 ✓	15 29 ✓	15 29 ✓	15 29 ✓
Houston Pilots M - Kinder 1	13 25 ✓	14 28 ✓	14 28 ✓	13 28 ✓	13 26 ✓	13 26 ✓	13 24 ✓	13 25 ✓	13 26 ✓	14 26 ✓	14 26 ✓	14 26 ✓	14 26 ✓	14 25 ✓	13 25 ✓	13 25 ✓	14 25 ✓	14 25 ✓	14 25 ✓	15 28 ✓	15 28 ✓	15 29 ✓	15 29 ✓	15 29 ✓
Houston Pilots L - Greens Bayou	13 25 ✓	14 26 ✓	14 28 ✓	13 26 ✓	13 26 ✓	13 26 ✓	13 24 ✓	13 25 ✓	13 26 ✓	13 26 ✓	14 26 ✓	13 26 ✓	13 26 ✓	13 26 ✓	13 26 ✓	13 26 ✓	13 26 ✓	13 26 ✓	13 26 ✓	15 28 ✓	15 29 ✓	15 29 ✓	15 29 ✓	15 29 ✓
Houston Pilots K - Shell Crude	13 25 ✓	13 28 ✓	14 28 ✓	13 26 ✓	13 26 ✓	13 25 ✓	13 24 ✓	13 25 ✓	13 26 ✓	14 26 ✓	14 28 ✓	14 28 ✓	13 26 ✓	13 28 ✓	13 28 ✓	13 28 ✓	13 28 ✓	14 28 ✓	14 28 ✓	15 29 ✓	15 30 ✓	15 30 ✓	15 29 ✓	15 29 ✓
Houston Pilots J - Lynchburg Ferries	13 25 ✓	14 26 ✓	14 28 ✓	13 26 ✓	14 26 ✓	13 26 ✓	13 24 ✓	13 25 ✓	13 26 ✓	13 26 ✓	13 28 ✓	13 28 ✓	13 28 ✓	13 28 ✓	13 28 ✓	13 28 ✓	13 28 ✓	13 28 ✓	13 28 ✓	15 29 ✓	15 29 ✓	15 29 ✓	15 28 ✓	15 29 ✓
Houston Pilots I - Exxon 3	17 25 ✓	17 28 ✓	17 28 ✓	17 26 ✓	17 26 ✓	17 26 ✓	17 25 ✓	18 26 ✓	20 28 ✓	22 29 ✓	22 30 ✓	22 30 ✓	22 30 ✓	22 30 ✓	22 31 ✓	22 30 ✓	22 31 ✓	22 30 ✓	22 30 ✓	21 30 ✓	22 30 ✓	21 30 ✓	20 29 ✓	20 29 ✓
Houston Pilots H - Morgans Point	17 25 ✓	17 28 ✓	17 28 ✓	17 26 ✓	17 26 ✓	17 26 ✓	17 25 ✓	18 26 ✓	20 28 ✓	22 29 ✓	22 30 ✓	22 30 ✓	22 30 ✓	22 30 ✓	22 31 ✓	22 30 ✓	22 31 ✓	22 31 ✓	22 30 ✓	21 30 ✓	21 30 ✓	21 30 ✓	20 29 ✓	20 29 ✓
Houston Pilots G - 75/76	17 28 ✓	18 29 ✓	18 29 ✓	18 28 ✓	18 29 ✓	20 28 ✓	20 26 ✓	20 28 ✓	22 30 ✓	22 31 ✓	23 32 ✓	23 32 ✓	23 32 ✓	24 33 ✓	24 33 ✓	24 33 ✓	24 35 ✓	24 35 ✓	24 33 ✓	23 35 ✓	23 35 ✓	23 33 ✓	22 33 ✓	21 31 ✓
Houston Pilots F - 63/64	17 26 ✓	18 29 ✓	20 29 ✓	18 29 ✓	20 29 ✓	20 28 ✓	20 26 ✓	20 28 ✓	22 30 ✓	22 31 ✓	23 32 ✓	23 32 ✓	22 31 ✓	23 32 ✓	24 33 ✓	23 33 ✓	24 35 ✓	24 35 ✓	23 33 ✓	23 35 ✓	23 35 ✓	23 35 ✓	22 33 ✓	22 31 ✓
Houston Pilots E - 51/52	18 28 ✓	20 29 ✓	20 29 ✓	20 29 ✓	20 29 ✓	20 28 ✓	20 28 ✓	21 29 ✓	22 31 ✓	23 32 ✓	24 32 ✓	24 32 ✓	23 32 ✓	24 33 ✓	24 35 ✓	24 35 ✓	25 35 ✓	24 35 ✓	24 35 ✓	24 35 ✓	24 35 ✓	23 35 ✓	23 35 ✓	22 33 ✓
Houston Pilots D - 37/38	18 28 ✓	20 29 ✓	20 29 ✓	20 29 ✓	20 29 ✓	20 28 ✓	20 30 ✓	22 31 ✓	22 32 ✓	23 32 ✓	23 32 ✓	23 32 ✓	23 32 ✓	24 33 ✓	24 35 ✓	24 35 ✓	24 36 ✓	24 35 ✓	24 35 ✓	24 36 ✓	24 36 ✓	24 36 ✓	24 36 ✓	22 33 ✓
Houston Pilots C - 25/26	17 26 ✓	18 29 ✓	20 29 ✓	20 29 ✓	20 29 ✓	20 28 ✓	20 30 ✓	21 32 ✓	22 32 ✓	22 32 ✓	22 32 ✓	22 32 ✓	22 32 ✓	23 33 ✓	23 35 ✓	23 35 ✓	24 36 ✓	24 35 ✓	24 35 ✓	24 36 ✓	24 36 ✓	24 36 ✓	24 36 ✓	22 33 ✓
Houston Pilots B - 11/12	17 26 ✓	17 29 ✓	18 29 ✓	18 29 ✓	18 29 ✓	17 28 ✓	17 28 ✓	18 29 ✓	20 31 ✓	20 31 ✓	20 32 ✓	20 32 ✓	20 31 ✓	20 33 ✓	21 35 ✓	21 35 ✓	22 35 ✓	22 35 ✓	22 35 ✓	22 36 ✓	22 36 ✓	22 36 ✓	22 35 ✓	21 33 ✓
Houston Pilots A - 1 & 2 Bravo	20 30 ✓	20 30 ✓	20 31 ✓	20 31 ✓	21 31 ✓	21 31 ✓	21 31 ✓	22 32 ✓	23 33 ✓	23 35 ✓	24 36 ✓	24 35 ✓	24 37 ✓	24 37 ✓	25 37 ✓	25 37 ✓	26 39 ✓	26 39 ✓	26 38 ✓	26 40 ✓	26 38 ✓	25 38 ✓	25 38 ✓	24 38 ✓

NOTE: This is automated data that may/may not agree with the official BAM thinking that's found on the daily slides. This data should be used as a guide only.

Houston Pilots: FRI. 9/6/2024

Forecast Discussion

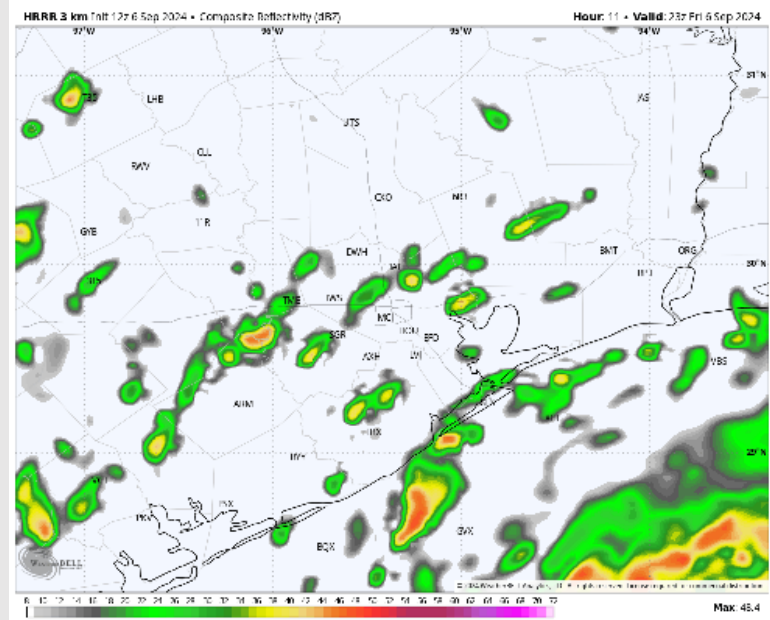
Precip: Isolated chances for showers and storms at all boarding stations will continue through 8pm. Dry conditions are favored overnight

Wind: Winds will be out of the NE throughout the evening. **N of Morgan's Point:** Winds will be sustained 9 – 15 kts throughout the evening. **S of Morgan's Point:** Winds will be sustained at 15 – 20 kts throughout the evening with **Wind gusts S of station 11/12 of 40-50 kts will be possible!**

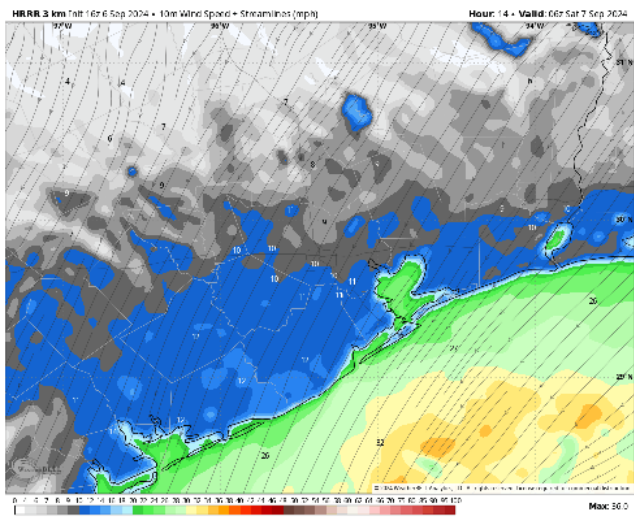
Low Temps: **N of Morgan's Point:** Low 70s F. **S of Morgan's Point:** mid 70s F.

Visibility: Not anticipating any fog concerns for today, any rainfall could slightly reduced visibility.

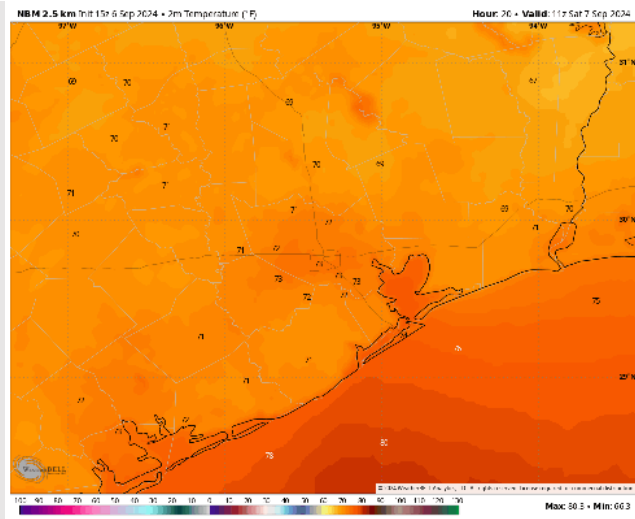
Precip Image: 6 PM CT



**Wind Speed:
2 AM CT**



**SAT AM
Temps:
6 AM CT**



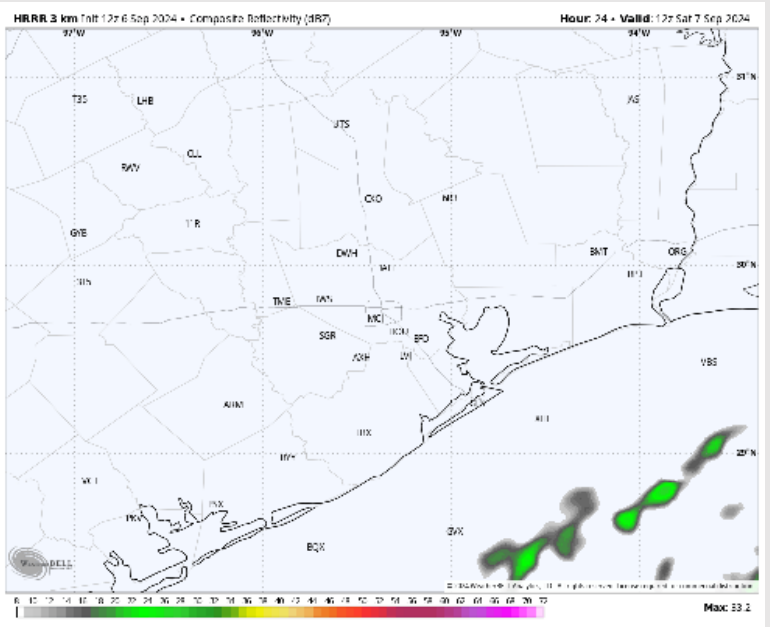
Houston Pilots: SAT. 9/7/2024



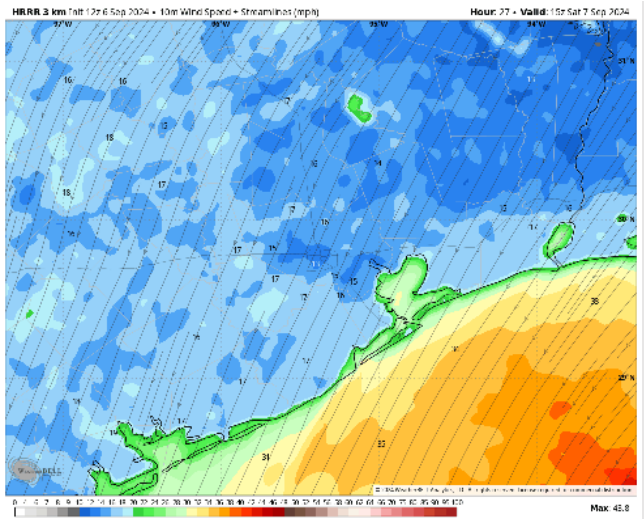
Forecast Discussion

- Precip:** Favoring dry conditions throughout the day.
- Wind:** Winds will be generally out of the N/NE for the entire day. **N of Morgan's Point:** Winds at 10 – 15 kts for the entire day. **S of Morgan's Point:** Winds will be sustained at 15-25 kts with gusts up to 30 kts
- High Temps:** **N of Morgan's Point:** Mid to upper 80s F. **S of Morgan's Point:** Mid 80s F.
- Visibility:** Not favoring any fog concerns for Saturday.

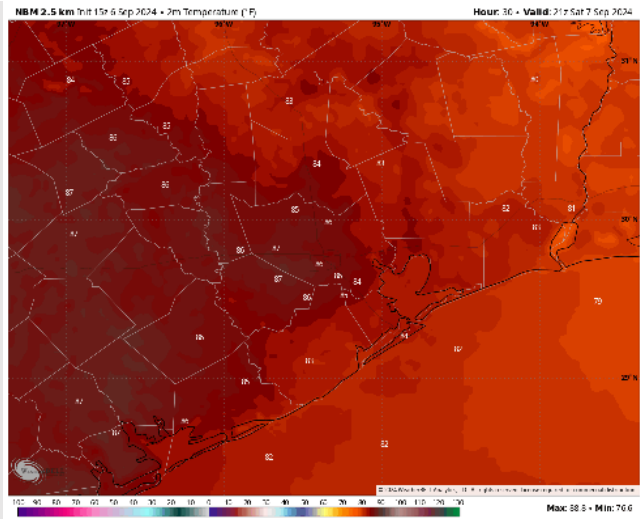
Precip Image: 7 AM CT



Wind Speed
9 AM CT



High Temps
Saturday



Houston Pilots: SUN. 9/8/2024



Forecast Discussion

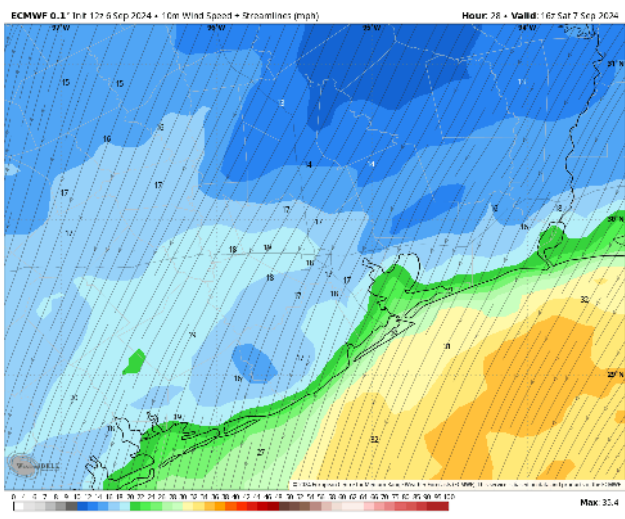
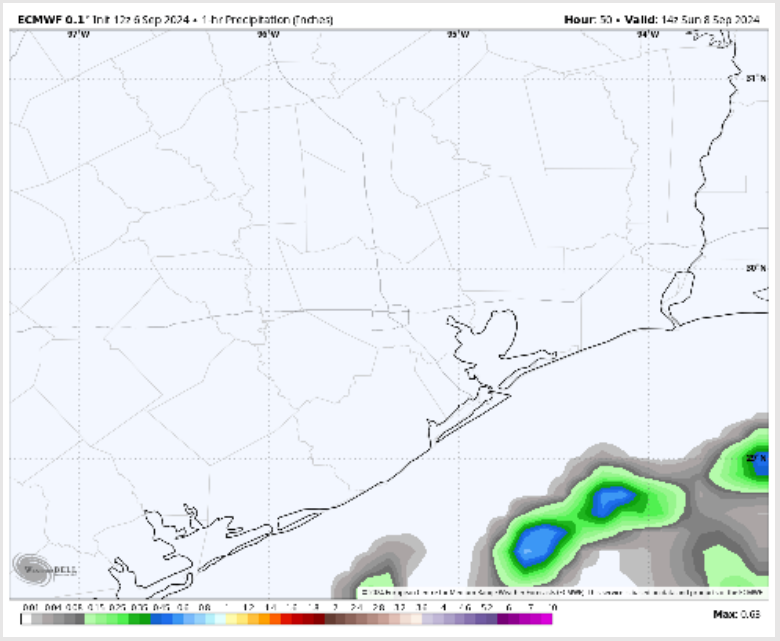
Precip: Favoring dry conditions throughout the day on Sunday.

Wind: Winds will be out of the NE through the day on Sunday. **N of Morgan's Point:** Winds will be at 9 – 14 kts throughout the day. **S of Morgan's Point:** Winds will be at 16-21 kts with 20-25 kts winds for the boarding station. **Wind gusts of 30-35 kts will be possible for the boarding station throughout the day.**

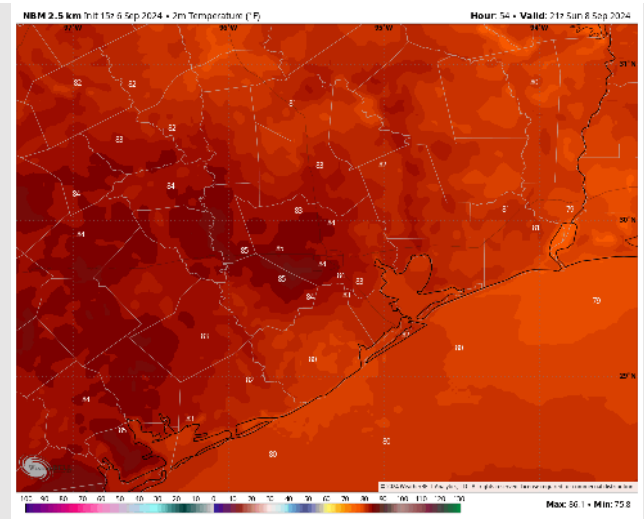
High Temps: **N of Morgan's Point:** Mid 80s F. **S of Morgan's Point:** Low 80s F.

Visibility: Not anticipating any concerns for Sunday.

Precip Image: 9 AM CT



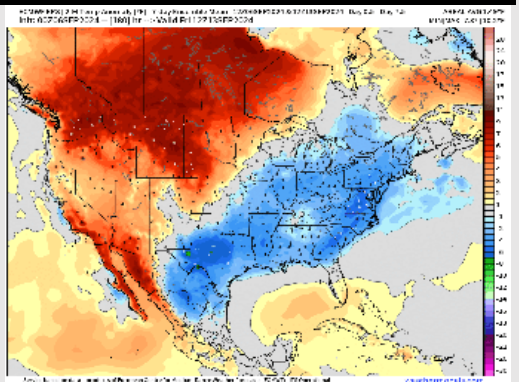
Wind Speed:
11 AM CT



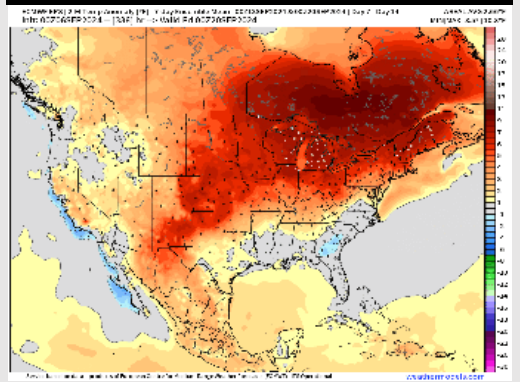
High Temps
Sunday

Houston Pilots: 9/6/24

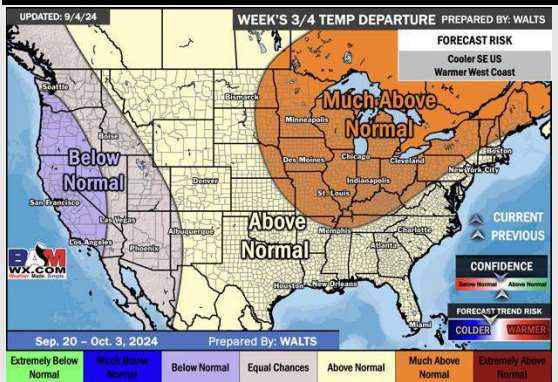
Next 7 Day Temperature Departure



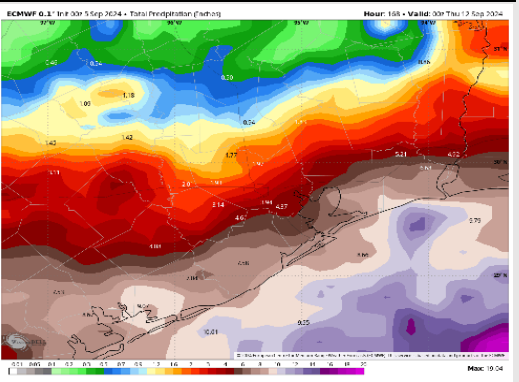
8-14 Day Temperature Departure



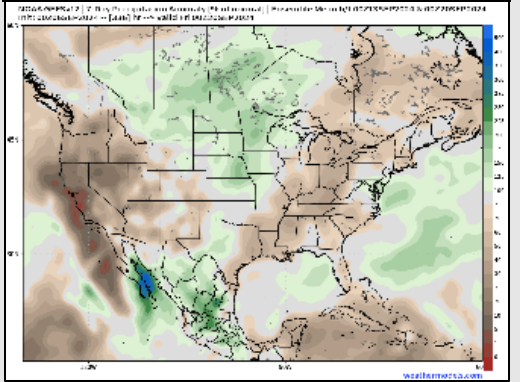
15-30 Day Temperature Departure



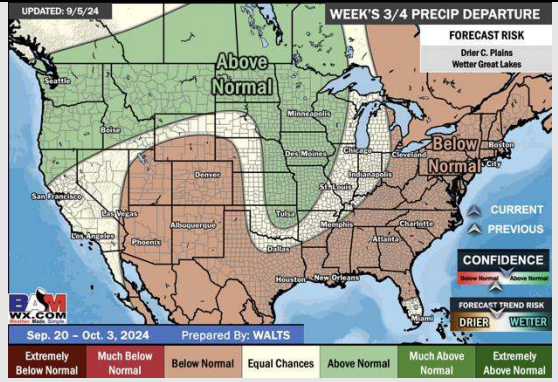
Next 7 Day Total Precipitation



8-14 Day % of Average Precip.



15-30 Day % of Average Precip.



- Temps are expected to be below normal for the week 1 timeframe. Scattered to widespread rain chances are expected daily through the rest of this week with drier conditions into the weekend.
- Near normal temperatures are favored for week 2 with near to just below normal rain chances. Tropical activity threats for late Week 1 / early Week 2 and beyond will continue to be monitored
- Above normal temperatures and below normal precipitation chances are expected for the weeks 3/4 timeframe.