

# Houston Pilots Forecast Package



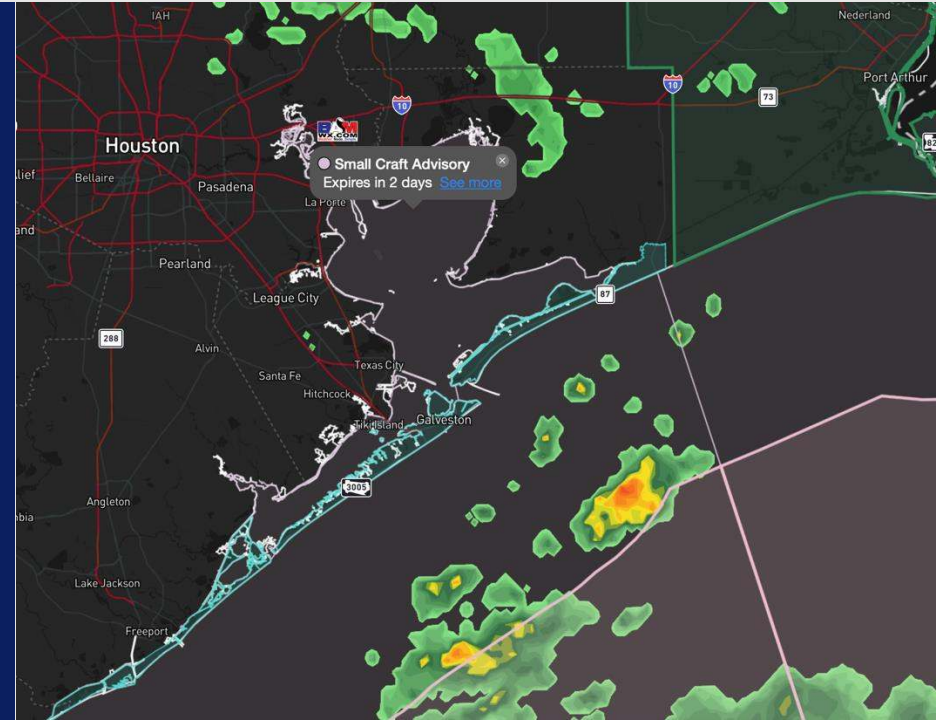
Updated: 8:10 AM CT

Friday, September 6, 2024

Forecaster: Griffin

## Weather Headlines

- **Due to the increase of winds with the tropical system, Zulu port conditions have been met, albeit borderline.**
- **Monitoring an area of low-pressure of the SW coast of Houston that has slight potential for development into a tropical depression.**
- **Watching for increasing wave heights of 4+ feet this weekend. See wave height slide for more information.**
- **[Latest Forecast Update Video](#)**



**Current Radar: 8:12 AM CT**



As always, please do not hesitate to reach out to us with any forecast questions via the chat option on Clarity or our on-call number, **(317)-560-8122** press **1** for forecast questions.

# Houston Pilots Port Trigger Update

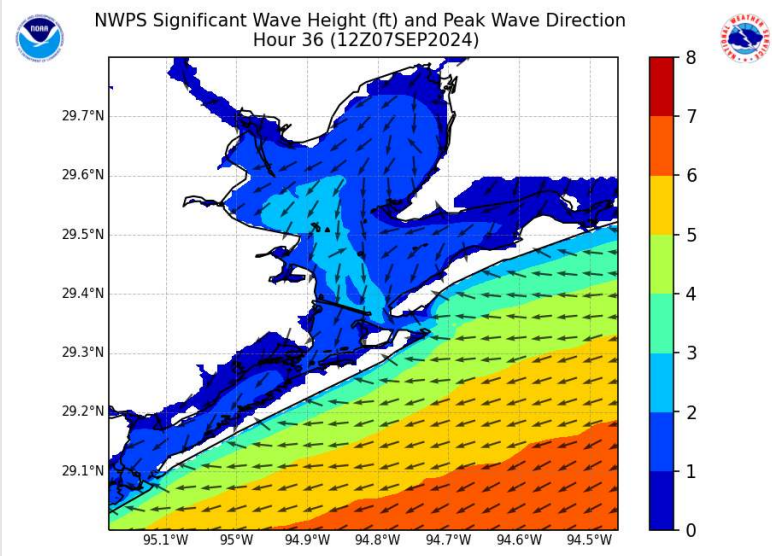


Port Condition	34 KTS+ Sustained Wind Trigger Reached at:	6 Foot Wave Trigger Reached at:	Time Remaining/Trigger Ends At:
Victor	---	---	N/A
Whiskey	---	---	N/A
X-Ray	---	---	N/A
Yankee	---	N/A	N/A
Zulu	<b>Current</b>	N/A	<b>1 PM SAT</b>

Port Condition	Trigger Definition	Trigger Reached?
Victor	Hurricane entering/developing in Gulf of Mexico that's a threat to the area	N/A
Whiskey	72 hours prior to predicted sustained winds of 34+ KTS	N/A
X-Ray	48 hours prior to predicted sustained winds of 34+ KTS or <b>6' wave height</b>	N/A
Yankee	24 hours prior to predicted sustained winds of 34+ KTS or <b>6' wave height</b>	N/A
Zulu	12 hours prior to predicted sustained winds of 34+ KTS or <b>6' wave height</b>	Yes

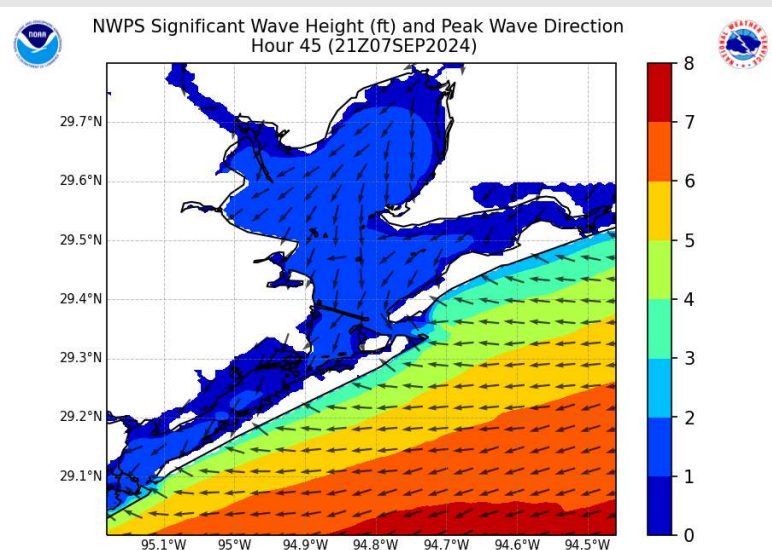
**NOTES: 34+ KT wind threat is primarily for the boarding station with a low-end risk for stations 11/12 throughout the listed timeframe.**

# Wave Height Forecast Update



7 AM CT SAT

We're monitoring the risk of increasing wave heights with the tropical system pushing into the Gulf this weekend, though there is slightly lower confidence.



4 PM CT SAT

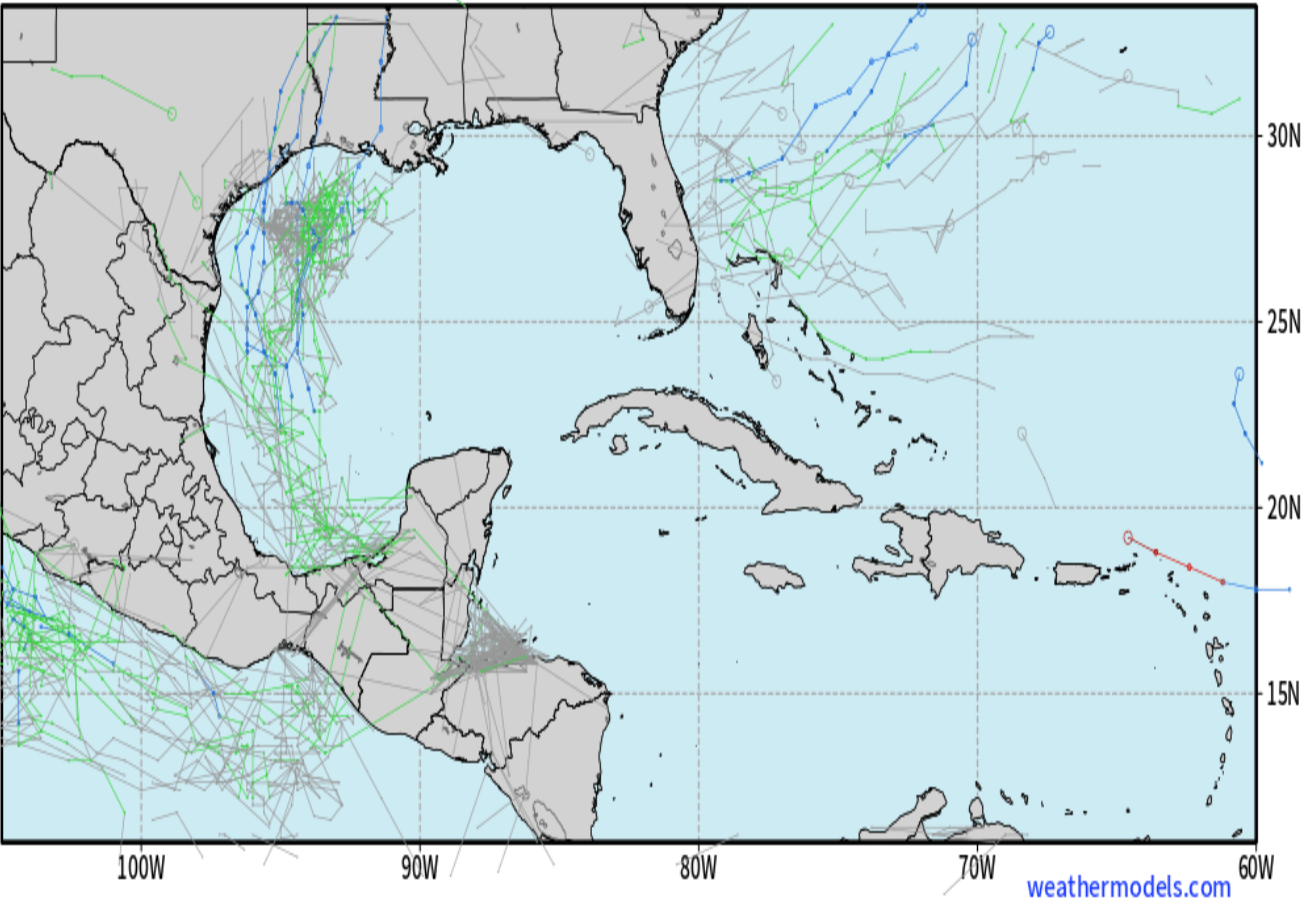
Timeframe to watch for peak wave heights of 4+ feet will be 7 AM Saturday – 4 PM Sunday.

# Houston Pilots Tropical Update

## European Model Next 10 Days - Tropical Tracks

ECMWF EPS | Cyclone Locations --> Next [10-days]  
FORECAST INIT: 00Z06SEP2024 --> UNTIL 00Z16SEP2024

o-o > 1005 hPa  
o-o 1000 - 1005 hPa  
o-o 980 - 999 hPa  
o-o 960 - 979 hPa  
o-o 950 - 959 hPa  
o-o < 950 hPa



More information on short term tropical wave can be found in the video tab.

Brief strengthening into a tropical depression cannot be ruled out but further development into a tropical storm or hurricane is not favored at this time.

Beyond this wave, another wave is being monitored that could create impacts next TUE/ WED (located near the Yucatan now). A hurricane is not expected with this but there is high amounts of uncertainty concerning track/ intensity.

# Houston Pilots Visibility Chart (miles)



## Forecast Confidence



Visibility	Fri 10 am	Fri 11 am	Fri 12 pm	Fri 1 pm	Fri 2 pm	Fri 3 pm	Fri 4 pm	Fri 5 pm	Fri 6 pm	Fri 7 pm	Fri 8 pm	Fri 9 pm	Fri 10 pm	Fri 11 pm	Sat 12 am	Sat 1 am	Sat 2 am	Sat 3 am	Sat 4 am	Sat 5 am	Sat 6 am	Sat 7 am	Sat 8 am	Sat 9 am
Houston Pilots N - 610 Bridge	4.9	3.9	5.9	6.9	7.9	9	6.9	6.9	7.9	10.1	10.1	10.1	10.1	6.9	9	10.1	10.1	10.1	10.1	10.1	10.1	10.1	10.1	9
Houston Pilots M - Kinder 1	4.9	3.9	5.9	6.9	7.9	9	6.9	6.9	7.9	10.1	9	10.1	10.1	6.9	9	10.1	10.1	10.1	10.1	10.1	10.1	10.1	10.1	9
Houston Pilots L - Greens Bayou	4.9	4.9	5.9	6.9	7.9	9	6.9	6.9	7.9	9	9	10.1	9	6.9	9	10.1	10.1	10.1	10.1	10.1	10.1	10.1	10.1	9
Houston Pilots K - Shell Crude	4.9	4.9	5.9	6.9	7.9	7.9	6.9	6.9	7.9	9	9	10.1	9	6.9	9	10.1	10.1	10.1	10.1	10.1	10.1	10.1	10.1	10.1
Houston Pilots J - Lynchburg Ferries	5.9	4.9	5.9	6.9	7.9	7.9	6.9	6.9	7.9	9	9	10.1	9	6.9	9	10.1	10.1	10.1	10.1	10.1	10.1	10.1	10.1	9
Houston Pilots I - Exxon 3	6.9	4.9	5.9	6.9	7.9	7.9	6.9	6.9	7.9	9	9	10.1	9	6.9	9	10.1	10.1	10.1	10.1	10.1	10.1	10.1	10.1	10.1
Houston Pilots H - Morgans Point	6.9	4.9	5.9	6.9	7.9	7.9	6.9	6.9	6.9	9	9	9	9	6.9	9	10.1	10.1	10.1	10.1	10.1	10.1	10.1	10.1	10.1
Houston Pilots G - 75/76	6.9	3.9	3.9	3.9	4.9	4.9	4.9	5.9	4.9	6.9	9	9	10.1	10.1	10.1	10.1	10.1	10.1	10.1	10.1	10.1	10.1	9	12
Houston Pilots F - 63/64	6.9	3.9	3.9	3.9	4.9	4.9	4.9	5.9	4.9	6.9	7.9	9	10.1	10.1	10.1	10.1	10.1	10.1	10.1	10.1	10.1	10.1	9	12
Houston Pilots E - 51/52	6.9	3.9	3.9	3.9	3.9	4.9	4.9	4.9	4.9	5.9	7.9	9	9	10.1	10.1	10.1	10.1	10.1	9	10.1	10.1	10.1	9	12
Houston Pilots D - 37/38	6.9	3.9	3.9	3.9	3.9	4.9	4.9	4.9	4.9	5.9	7.9	9	9	10.1	10.1	9	9	7.9	7.9	10.1	10.1	10.1	9	12
Houston Pilots C - 25/26	6.9	3.9	3.9	3.9	3.9	4.9	4.9	5.9	5.9	4.9	7.9	9	6.9	6.9	6.9	9	7.9	7.9	7.9	10.1	10.1	10.1	9	12
Houston Pilots B - 11/12	6.9	3.9	3.9	3.9	3.9	4.9	4.9	5.9	5.9	4.9	7.9	7.9	6.9	6.9	6.9	7.9	6.9	6.9	6.9	10.1	10.1	10.1	9	9
Houston Pilots A - 1 & 2 Bravo	6.9	3.9	3.9	3	3.9	3.9	4.9	4.9	4.9	4.9	7.9	7.9	9	9	7.9	6.9	6.9	6.9	6.9	7.9	9	10.1	9	9

**NOTE: This is automated data that may/may not agree with the official BAM thinking that's found on the daily slides or special visibility report slides. This data should be used as a guide only**

# Houston Pilots Wind Chart



**Forecast Confidence**

Above Normal  Below Normal

Sustained wind 10 Knots

Gusts 15 Knots

Wind from the SE

**Example**

10

15

↙

Wind	Fri 10 am	Fri 11 am	Fri 12 pm	Fri 1 pm	Fri 2 pm	Fri 3 pm	Fri 4 pm	Fri 5 pm	Fri 6 pm	Fri 7 pm	Fri 8 pm	Fri 9 pm	Fri 10 pm	Fri 11 pm	Sat 12 am	Sat 1 am	Sat 2 am	Sat 3 am	Sat 4 am	Sat 5 am	Sat 6 am	Sat 7 am	Sat 8 am	Sat 9 am	
Houston Pilots N - 610 Bridge	13 24 ✓	13 24 ✓	13 26 ✓	13 26 ✓	13 26 ✓	14 29 ✓	14 29 ✓	14 29 ✓	14 28 ✓	14 28 ✓	13 25 ✓	13 26 ✓	13 26 ✓	14 26 ✓	14 26 ✓	14 26 ✓	14 25 ✓	14 25 ✓	13 25 ✓	13 24 ✓	13 24 ✓	14 25 ✓	14 25 ✓	14 26 ✓	
Houston Pilots M - Kinder 1	13 24 ✓	13 24 ✓	13 25 ✓	13 26 ✓	13 26 ✓	14 29 ✓	14 29 ✓	14 29 ✓	14 28 ✓	14 28 ✓	13 25 ✓	13 26 ✓	13 26 ✓	14 26 ✓	14 26 ✓	14 26 ✓	13 26 ✓	13 25 ✓	13 25 ✓	13 25 ✓	13 25 ✓	13 25 ✓	14 25 ✓	14 24 ✓	
Houston Pilots L - Greens Bayou	13 24 ✓	13 24 ✓	13 25 ✓	13 26 ✓	14 26 ✓	14 28 ✓	14 29 ✓	14 28 ✓	14 28 ✓	14 28 ✓	13 25 ✓	13 26 ✓	13 26 ✓	14 26 ✓	14 28 ✓	13 26 ✓	13 26 ✓	13 26 ✓	13 26 ✓	13 25 ✓	13 26 ✓	13 26 ✓	13 25 ✓	13 28 ✓	
Houston Pilots K - Shell Crude	13 24 ✓	13 25 ✓	13 25 ✓	13 26 ✓	13 26 ✓	14 29 ✓	14 29 ✓	14 28 ✓	14 28 ✓	13 26 ✓	13 25 ✓	13 26 ✓	13 26 ✓	14 26 ✓	14 28 ✓	13 28 ✓	13 26 ✓	13 26 ✓	13 28 ✓	13 26 ✓	13 28 ✓	13 28 ✓	13 28 ✓	13 26 ✓	
Houston Pilots J - Lynchburg Ferries	13 24 ✓	13 24 ✓	13 25 ✓	13 25 ✓	14 26 ✓	14 28 ✓	15 29 ✓	14 28 ✓	14 28 ✓	14 26 ✓	13 25 ✓	13 26 ✓	13 26 ✓	13 28 ✓	13 28 ✓	13 26 ✓	13 26 ✓	13 28 ✓	13 28 ✓	13 26 ✓	13 26 ✓	13 28 ✓	13 28 ✓	13 28 ✓	
Houston Pilots I - Exxon 3	17 25 ✓	17 25 ✓	17 26 ✓	17 26 ✓	17 26 ✓	17 28 ✓	17 29 ✓	17 28 ✓	17 28 ✓	18 26 ✓	18 26 ✓	20 26 ✓	21 28 ✓	22 29 ✓	22 30 ✓	22 30 ✓	22 29 ✓	22 30 ✓	22 30 ✓	22 30 ✓	22 30 ✓	22 30 ✓	22 30 ✓	21 29 ✓	21 30 ✓
Houston Pilots H - Morgans Point	17 25 ✓	17 26 ✓	17 26 ✓	17 26 ✓	17 26 ✓	18 28 ✓	18 29 ✓	17 28 ✓	17 28 ✓	18 26 ✓	18 26 ✓	20 28 ✓	21 29 ✓	22 30 ✓	22 30 ✓	22 29 ✓	22 29 ✓	22 30 ✓	22 30 ✓	22 30 ✓	22 30 ✓	22 30 ✓	22 30 ✓	21 29 ✓	21 30 ✓
Houston Pilots G - 75/76	20 28 ✓	20 28 ✓	20 28 ✓	18 28 ✓	18 28 ✓	20 29 ✓	20 29 ✓	20 29 ✓	20 29 ✓	20 29 ✓	20 28 ✓	21 29 ✓	22 30 ✓	23 31 ✓	24 32 ✓	23 32 ✓	23 31 ✓	23 32 ✓	24 33 ✓	23 33 ✓	24 33 ✓	24 35 ✓	24 35 ✓	22 33 ✓	23 33 ✓
Houston Pilots F - 63/64	20 29 ✓	20 28 ✓	20 29 ✓	20 28 ✓	18 28 ✓	20 29 ✓	20 29 ✓	20 30 ✓	20 29 ✓	20 29 ✓	20 28 ✓	21 29 ✓	22 31 ✓	22 32 ✓	23 32 ✓	23 32 ✓	22 31 ✓	22 32 ✓	23 33 ✓	23 33 ✓	23 33 ✓	23 35 ✓	23 35 ✓	22 33 ✓	23 33 ✓
Houston Pilots E - 51/52	20 29 ✓	20 29 ✓	20 30 ✓	20 29 ✓	20 29 ✓	20 30 ✓	21 30 ✓	20 30 ✓	20 30 ✓	20 29 ✓	21 29 ✓	22 30 ✓	23 32 ✓	23 32 ✓	24 33 ✓	24 32 ✓	23 31 ✓	24 33 ✓	24 33 ✓	24 33 ✓	24 33 ✓	24 35 ✓	24 35 ✓	23 33 ✓	24 35 ✓
Houston Pilots D - 37/38	20 29 ✓	20 29 ✓	20 29 ✓	20 29 ✓	18 28 ✓	20 29 ✓	21 30 ✓	20 30 ✓	20 30 ✓	21 29 ✓	21 29 ✓	22 31 ✓	23 32 ✓	23 33 ✓	24 33 ✓	23 33 ✓	22 32 ✓	24 33 ✓	24 35 ✓	24 35 ✓	24 35 ✓	24 35 ✓	23 35 ✓	23 35 ✓	24 35 ✓
Houston Pilots C - 25/26	20 29 ✓	20 29 ✓	20 29 ✓	20 29 ✓	18 28 ✓	20 29 ✓	20 29 ✓	20 29 ✓	20 29 ✓	20 29 ✓	21 29 ✓	22 31 ✓	22 32 ✓	23 33 ✓	22 33 ✓	22 33 ✓	22 32 ✓	22 33 ✓	23 33 ✓	23 35 ✓	22 35 ✓	23 35 ✓	23 35 ✓	23 35 ✓	23 36 ✓
Houston Pilots B - 11/12	17 28 ✓	17 28 ✓	18 28 ✓	17 28 ✓	17 28 ✓	18 29 ✓	20 29 ✓	20 29 ✓	18 29 ✓	17 29 ✓	17 29 ✓	20 30 ✓	20 32 ✓	20 32 ✓	20 32 ✓	20 32 ✓	20 31 ✓	20 33 ✓	20 33 ✓	20 35 ✓	20 35 ✓	21 35 ✓	21 35 ✓	21 35 ✓	22 35 ✓
Houston Pilots A - 1 & 2 Bravo	20 29 ✓	20 29 ✓	20 30 ✓	20 30 ✓	20 30 ✓	20 31 ✓	21 31 ✓	21 31 ✓	21 31 ✓	21 31 ✓	22 32 ✓	22 33 ✓	24 35 ✓	24 35 ✓	24 36 ✓	24 36 ✓	24 35 ✓	24 36 ✓	24 36 ✓	24 37 ✓	24 38 ✓	26 38 ✓	26 38 ✓	25 37 ✓	26 38 ✓

**NOTE: This is automated data that may/may not agree with the official BAM thinking that's found on the daily slides. This data should be used as a guide only.**

# Houston Pilots: FRI. 9/6/2024



## Forecast Discussion

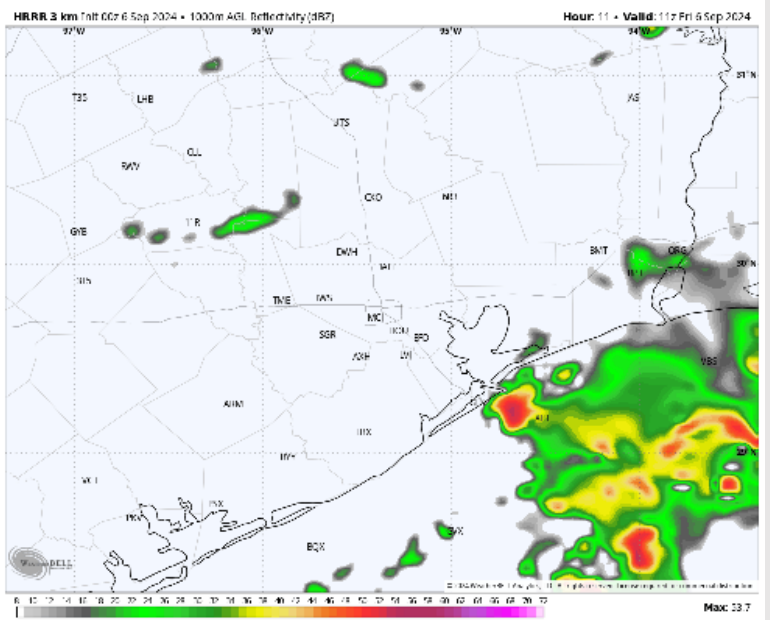
**Precip:** Isolated to scattered chances for showers and storms throughout the day Friday before clearing out by 7 PM. Boarding station will be at a more widespread shower/storm risk throughout the day before conditions clear out by 7PM. Dry conditions are then favored for the remainder of the night.

**Wind:** Winds will be out of the NE throughout the day. **N of Morgan's Point:** Winds will be sustained 7 – 13 kts throughout the day. **S of Morgan's Point:** Winds will be sustained at 12 – 17 kts through 9AM after 9AM favoring wind speeds to increase through 5PM. For stations N of 11/12 favoring wind speeds of 19 – 24 kts and for the boarding station favoring wind speeds of 33-38 kts. **Wind gusts S of station 11/12 of 40-50 kts will be possible!**

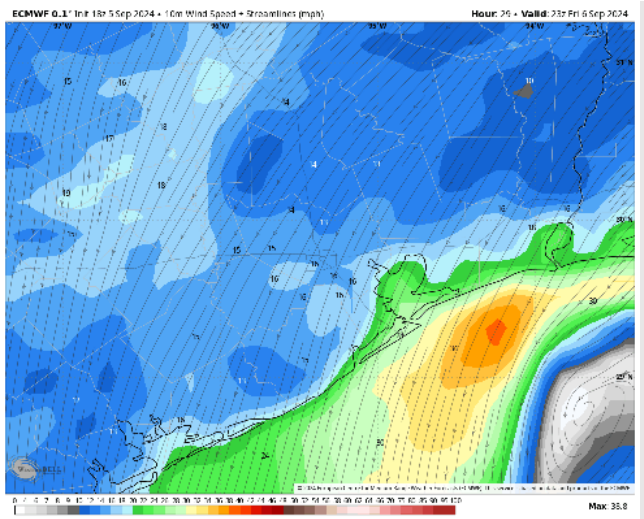
**High Temps:** **N of Morgan's Point:** Mid 80s F. **S of Morgan's Point:** Low to mid 80s F.

**Visibility:** Not anticipating any fog concerns for today, heavy rainfall will create pockets of reduced visibility.

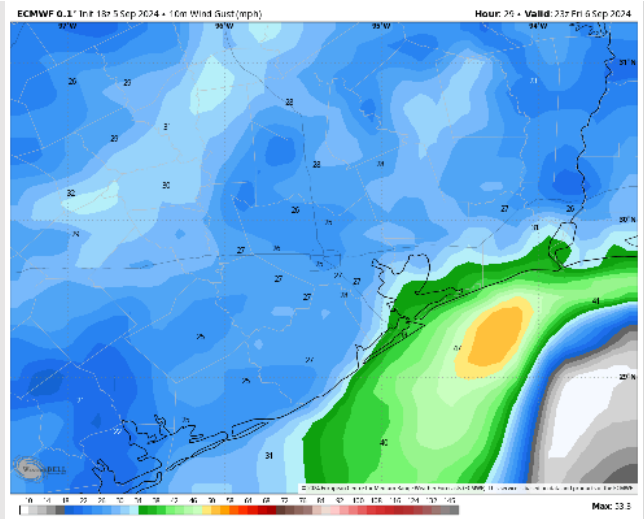
## Precip Image: 6 AM CT



Wind Speed:  
6 PM CT



Wind Gusts:  
6 PM CT



# Houston Pilots: SAT. 9/7/2024



## Forecast Discussion

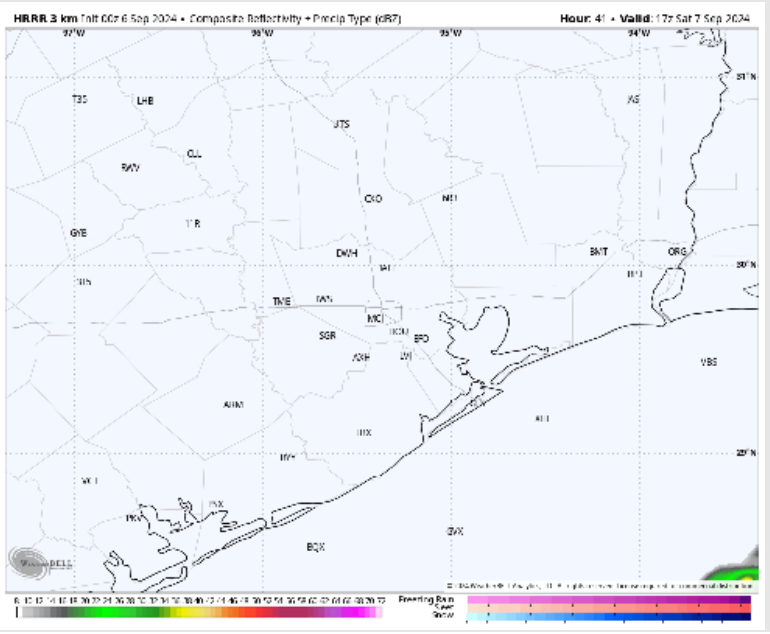
**Precip:** A few lingering, light showers through 3AM can't be ruled out, but at this time we are finally beginning to favor dry conditions for most of the day!

**Wind:** Winds will be generally out of the N/NE for the entire day. **N of Morgan's Point:** Winds at 10 – 15 kts for the entire day. **S of Morgan's Point:** Winds will be on the beyond midnight increasing to 26 – 30 knots by 8 AM. Gusts towards 8 AM with gusts of 34 – 40 knots. This threat last through roughly 11 AM – 1 PM in terms of wind speeds, before wind speeds slowly weaken. However, sustained winds of 24 – 28 knots and gusts to 30 – 32 knots will be possible for the remainder of the day. The greatest wind threat will be towards the Boarding station with decreasing winds further to the north.

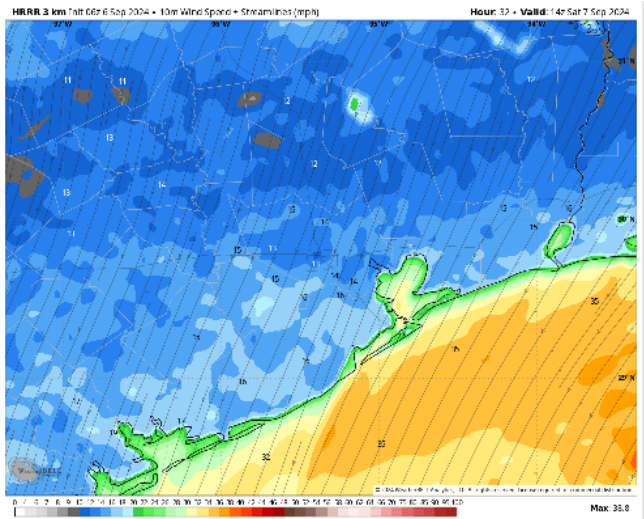
**High Temps:** **N of Morgan's Point:** Upper 80s F. **S of Morgan's Point:** Mid 80s F.

**Visibility:** Not favoring any fog concerns for Saturday.

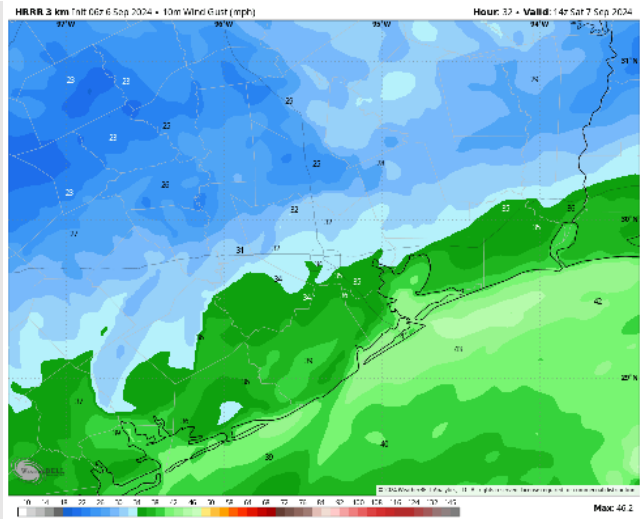
## Precip Image: 12 PM CT



Wind Speed  
9 AM CT



Wind Gusts:  
9 AM CT





# Houston Pilots: SUN. 9/8/2024



## Forecast Discussion

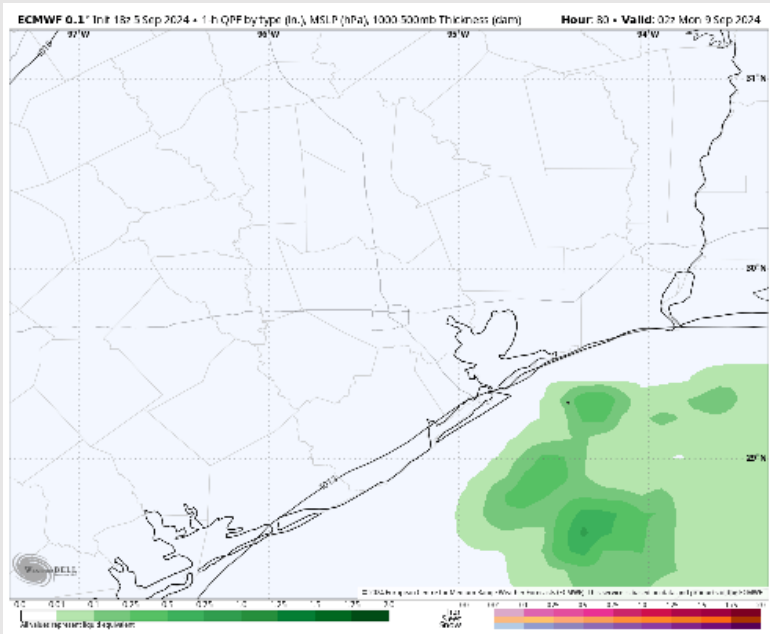
**Precip:** Favoring mostly dry conditions throughout Sunday however after 7PM showers/storms will be possible for the boarding station throughout the rest of the evening.

**Wind:** Winds will be out of the NE through the day on Sunday. **N of Morgan's Point:** Winds will be at 9 – 14 kts throughout the day. **S of Morgan's Point:** Winds will be at 16-21 kts with 20-25 kts winds for the boarding station. **Wind gusts of 30-35 kts will be possible for the boarding station throughout the day.**

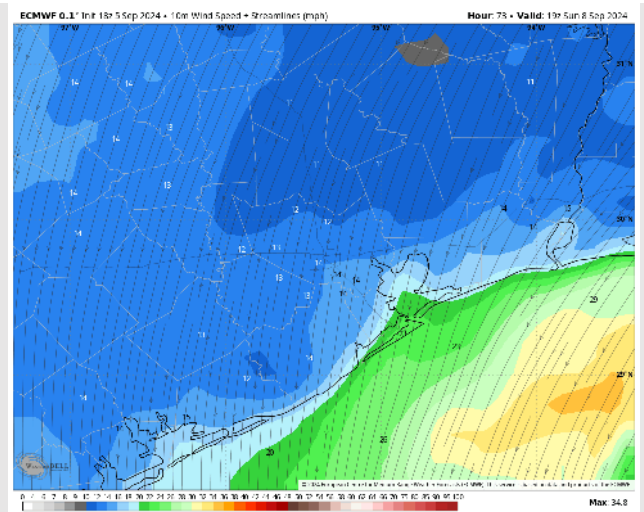
**High Temps:** **N of Morgan's Point:** Mid 80s F. **S of Morgan's Point:** Low 80s F.

**Visibility:** Not anticipating any concerns for Sunday.

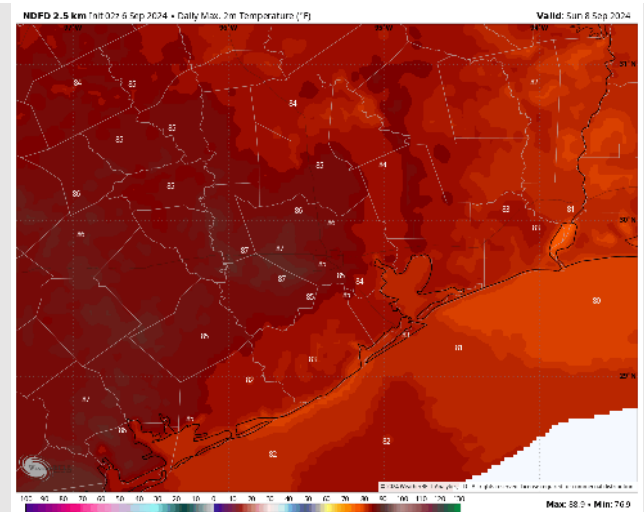
## Precip Image: 9 PM CT



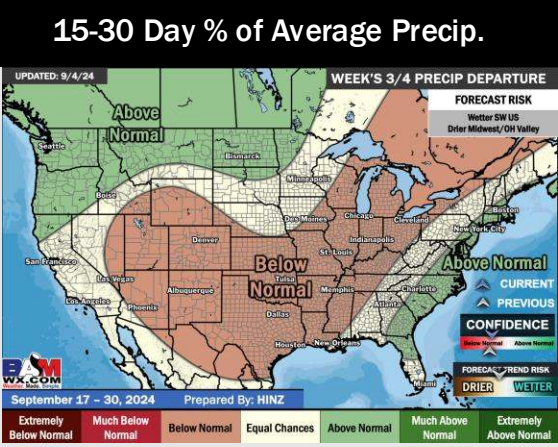
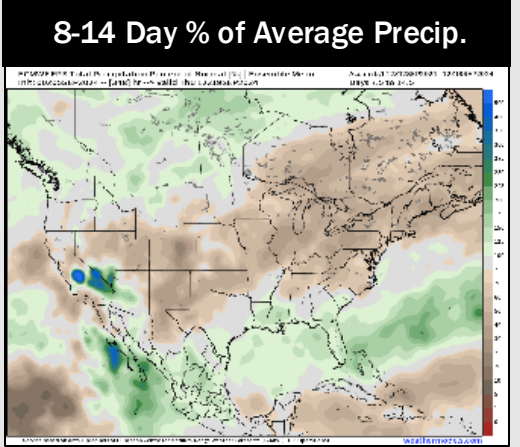
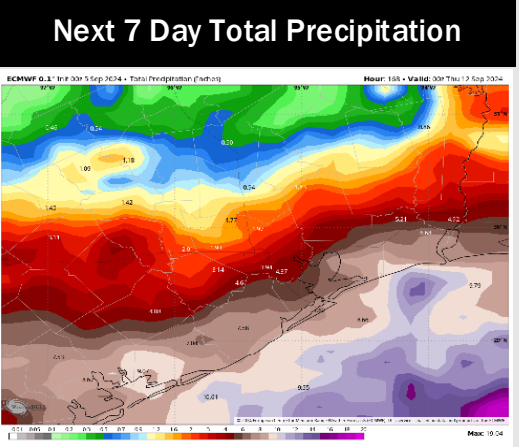
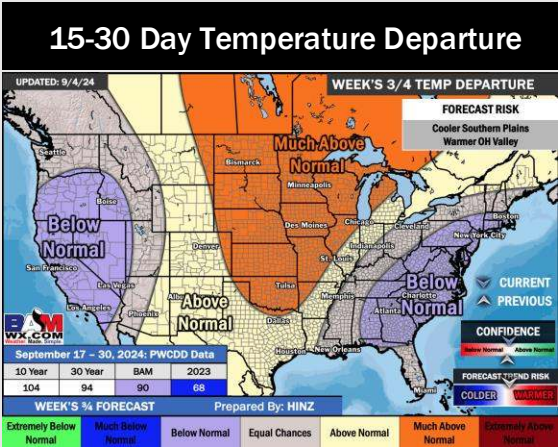
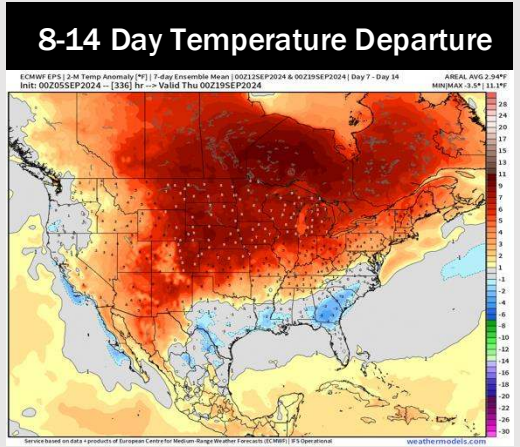
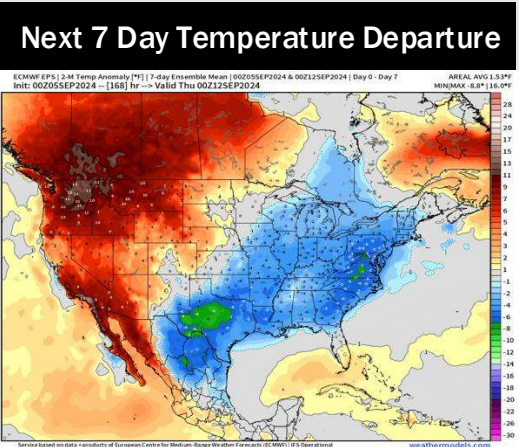
Wind Speed:  
2 PM CT



High Temps  
Sunday



# Houston Pilots: 9/6/24



- Temps are expected to be below normal for the week 1 timeframe. Scattered to widespread rain chances are expected daily through the rest of this week with drier conditions into the weekend.
- Below normal temperatures are favored for week 2 with near to just below normal rain chances. Tropical activity threats for late Week 1 / early Week 2 and beyond will continue to be monitored
- Above normal temperatures and seasonable precipitation chances are expected for the weeks 3/4 timeframe.