

Houston Pilots Forecast Package



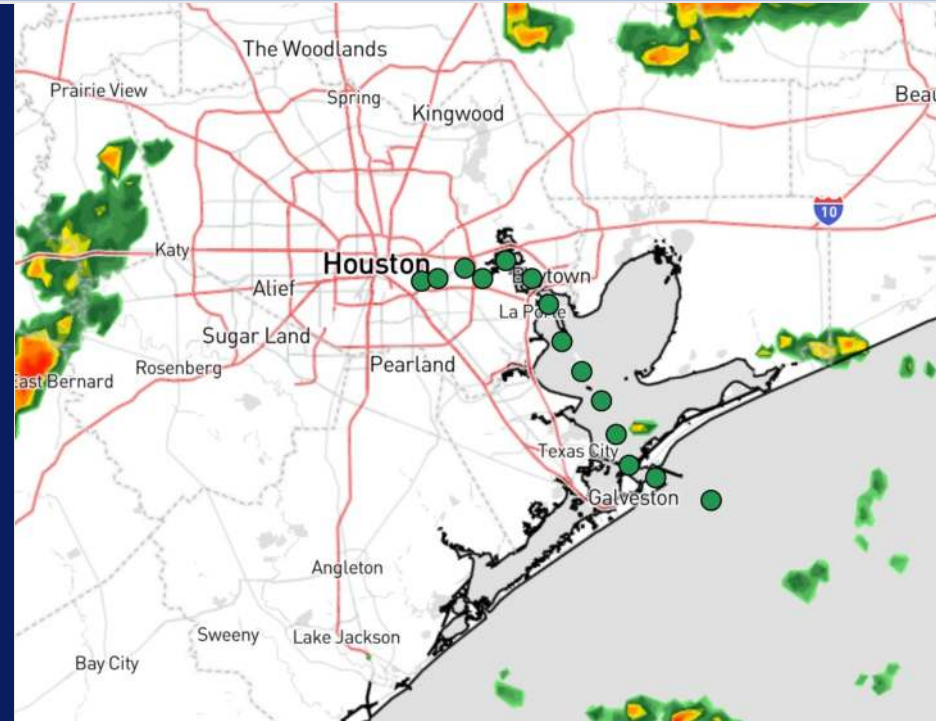
Updated: 9:30 PM CT

Sunday, September 1, 2024

Forecaster: Tyler Riggles

Weather Headlines

- Frequent periods of downpours / storms in play through the week, with **~20 - 25 kt gusts possible**.
- Monitoring a tropical wave as it works towards the Caribbean. Check tropical slides for more info.
- Not favoring any fog risks over the next few days.



Current Radar: 9:23 PM CT



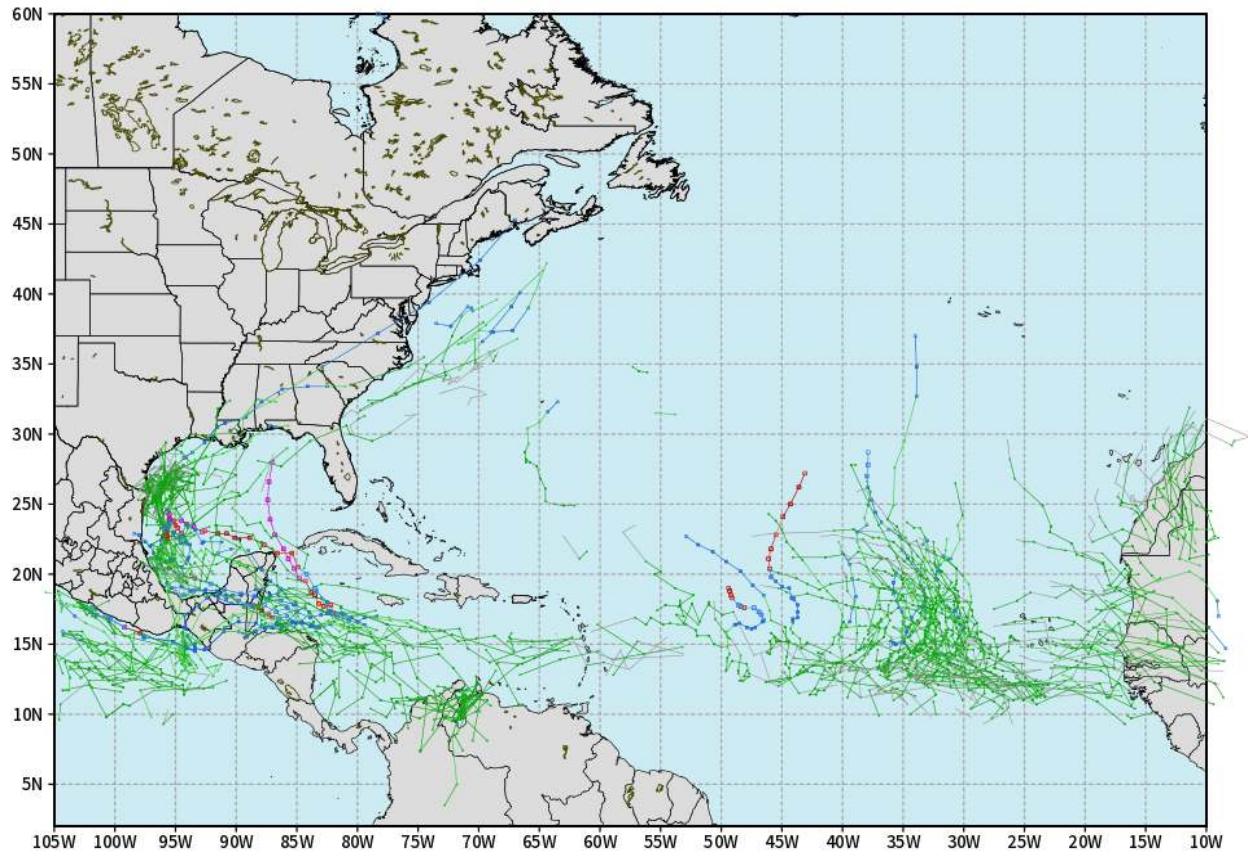
As always, please do not hesitate to reach out to us with any forecast questions via the chat option on Clarity or our on-call number, **(317)-560-8122** press **1** for forecast questions.

Houston Pilots Tropical Update

European Model Next 10 Days - Tropical Tracks

ECMWF ATLANTIC EPS Cyclone Locations --> Next [10-days]
INIT: 12Z01SEP2024 --> UNTIL 12Z11SEP2024

o-o ENSEMBLE MEAN
o-o 1000 - 1010 hPa
o-o 980 - 999 hPa
o-o 960 - 979 hPa
o-o 950 - 959 hPa
o-o < 950 hPa



weathermodels.com

Monitoring a broad area of low pressure off the SE TX Coast as it works slowly northward. Further development remains unlikely.

Favoring a Tropical System to continue to work into the E Caribbean started the start the week and development continues to look likely towards the middle of the week. A close eye will need to continue to be on this system for possible impacts in the Gulf.

Houston Pilots Tropical Update



Potential Francine?

TROPICAL INSIGHT

2:50 PM ET Sunday September 1, 2024

Forecaster: Lowry



TIMING: September 1st– September 8th

FORECAST NOTES:

- ✓ Tracking general progression of tropical wave above!
- ✓ Area in purple is area where formation potential remains
- ✓ Blue Arrow: Due to the wave struggling, slower development is favored, and a path N remains unlikely.

Houston Pilots Visibility Chart (miles)



Forecast Confidence



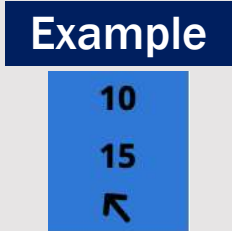
Visibility	Sun 11 pm	Mon 12 am	Mon 1 am	Mon 2 am	Mon 3 am	Mon 4 am	Mon 5 am	Mon 6 am	Mon 7 am	Mon 8 am	Mon 9 am	Mon 10 am	Mon 11 am	Mon 12 pm	Mon 1 pm	Mon 2 pm	Mon 3 pm	Mon 4 pm	Mon 5 pm	Mon 6 pm	Mon 7 pm	Mon 8 pm	Mon 9 pm	Mon 10 pm
Houston Pilots N - 610 Bridge	10.1	10.1	10.1	10.1	10.1	10.1	10.1	10.1	10.1	10.1	9	10.1	10.1	10.1	10.1	10.1	10.1	10.1	10.1	10.1	10.1	10.1	10.1	10.1
Houston Pilots M - Kinder 1	10.1	10.1	10.1	10.1	10.1	10.1	10.1	10.1	10.1	10.1	9	10.1	10.1	10.1	10.1	10.1	10.1	10.1	10.1	10.1	10.1	10.1	10.1	10.1
Houston Pilots L - Greens Bayou	10.1	10.1	10.1	10.1	10.1	10.1	10.1	10.1	10.1	10.1	7.9	10.1	10.1	10.1	10.1	10.1	10.1	10.1	10.1	10.1	10.1	10.1	10.1	10.1
Houston Pilots K - Shell Crude	10.1	10.1	10.1	10.1	10.1	10.1	10.1	10.1	10.1	10.1	7.9	10.1	10.1	10.1	10.1	10.1	10.1	10.1	10.1	10.1	10.1	10.1	10.1	10.1
Houston Pilots J - Lynchburg Ferries	10.1	10.1	10.1	10.1	10.1	10.1	10.1	10.1	10.1	10.1	7.9	10.1	10.1	10.1	10.1	10.1	10.1	10.1	10.1	10.1	10.1	10.1	10.1	10.1
Houston Pilots I - Exxon 3	10.1	10.1	10.1	10.1	10.1	10.1	10.1	10.1	10.1	10.1	7.9	10.1	10.1	10.1	10.1	10.1	10.1	10.1	10.1	10.1	10.1	10.1	10.1	10.1
Houston Pilots H - Morgans Point	10.1	10.1	10.1	10.1	10.1	10.1	10.1	10.1	10.1	10.1	7.9	10.1	10.1	10.1	10.1	10.1	10.1	10.1	10.1	10.1	10.1	10.1	10.1	10.1
Houston Pilots G - 75/76	10.1	10.1	10.1	10.1	10.1	10.1	10.1	10.1	10.1	10.1	10.1	10.1	10.1	10.1	10.1	10.1	10.1	10.1	10.1	10.1	10.1	10.1	9	9
Houston Pilots F - 63/64	10.1	10.1	10.1	10.1	10.1	10.1	10.1	10.1	10.1	10.1	10.1	10.1	10.1	10.1	10.1	10.1	10.1	10.1	10.1	10.1	10.1	10.1	9	9
Houston Pilots E - 51/52	10.1	10.1	10.1	10.1	10.1	10.1	10.1	10.1	10.1	10.1	10.1	10.1	10.1	10.1	10.1	10.1	10.1	10.1	10.1	10.1	10.1	10.1	9	9
Houston Pilots D - 37/38	10.1	10.1	10.1	10.1	10.1	10.1	10.1	10.1	10.1	10.1	6.9	10.1	10.1	10.1	10.1	10.1	10.1	10.1	10.1	10.1	10.1	10.1	9	9
Houston Pilots C - 25/26	10.1	10.1	10.1	10.1	10.1	10.1	10.1	10.1	10.1	10.1	6.9	6.9	10.1	10.1	10.1	10.1	10.1	10.1	10.1	10.1	10.1	10.1	12	9
Houston Pilots B - 11/12	10.1	10.1	10.1	10.1	10.1	10.1	10.1	10.1	10.1	10.1	6.9	6.9	10.1	10.1	10.1	10.1	10.1	10.1	10.1	10.1	10.1	10.1	12	9
Houston Pilots A - 1 & 2 Bravo	10.1	10.1	10.1	10.1	10.1	10.1	10.1	10.1	10.1	10.1	10.1	10.1	10.1	10.1	10.1	10.1	10.1	10.1	10.1	10.1	10.1	10.1	12	9

NOTE: This is automated data that may/may not agree with the official BAM thinking that's found on the daily slides or special visibility report slides. This data should be used as a guide only

Houston Pilots Wind Chart



Sustained wind 10 Knots
 Gusts 15 Knots
 Wind from the SE



Wind	Sun 11 pm	Mon 12 am	Mon 1 am	Mon 2 am	Mon 3 am	Mon 4 am	Mon 5 am	Mon 6 am	Mon 7 am	Mon 8 am	Mon 9 am	Mon 10 am	Mon 11 am	Mon 12 pm	Mon 1 pm	Mon 2 pm	Mon 3 pm	Mon 4 pm	Mon 5 pm	Mon 6 pm	Mon 7 pm	Mon 8 pm	Mon 9 pm	Mon 10 pm	
Houston Pilots N - 610 Bridge	7 14 ←	7 15 ←	7 15 ←	8 15 ←	8 15 ←	8 15 ←	8 16 ←	8 16 ←	8 16 ←	9 17 ←	10 18 ←	10 20 ←	10 20 ←	10 22 ←	10 22 ←	10 22 ←	10 23 ←	10 23 ←	10 22 ←	10 21 ←	9 18 ←	8 16 ←	7 15 ←	6 13 ←	
Houston Pilots M - Kinder 1	7 15 ←	7 15 ←	7 15 ←	8 15 ←	8 16 ←	8 15 ←	8 16 ←	8 16 ←	8 16 ←	9 17 ←	10 18 ←	10 20 ←	10 20 ←	10 22 ←	10 22 ←	10 22 ←	12 23 ←	10 23 ←	10 22 ←	10 21 ←	9 18 ←	8 16 ←	7 15 ←	6 13 ←	
Houston Pilots L - Greens Bayou	7 15 ←	7 15 ←	7 15 ←	7 15 ←	7 16 ←	8 16 ←	8 16 ←	8 16 ←	8 17 ←	8 17 ←	9 18 ←	10 20 ←	10 20 ←	10 21 ←	10 22 ←	10 22 ←	10 22 ←	10 23 ←	10 21 ←	10 20 ←	8 18 ←	8 16 ←	6 14 ←	6 13 ←	
Houston Pilots K - Shell Crude	7 15 ←	7 15 ←	7 15 ←	7 16 ←	7 16 ←	8 16 ←	8 16 ←	8 17 ←	8 17 ←	9 18 ←	9 20 ←	10 20 ←	10 21 ←	10 21 ←	10 22 ←	10 22 ←	10 22 ←	10 23 ←	10 21 ←	10 20 ←	8 17 ←	8 16 ←	6 14 ←	6 13 ←	
Houston Pilots J - Lynchburg Ferries	6 15 ←	6 15 ←	6 15 ←	6 15 ←	7 16 ←	7 16 ←	7 16 ←	8 17 ←	8 17 ←	8 18 ←	9 20 ←	9 20 ←	10 20 ←	10 21 ←	10 22 ←	10 22 ←	10 22 ←	10 22 ←	10 21 ←	9 20 ←	8 17 ←	7 15 ←	6 13 ←	6 13 ←	
Houston Pilots I - Exxon 3	13 17 ←	13 17 ←	13 17 ←	13 18 ←	14 18 ←	14 20 ←	14 20 ←	15 21 ←	15 21 ←	15 21 ←	15 22 ←	15 21 ←	15 22 ←	15 22 ←	15 22 ←	15 23 ←	15 23 ←	15 23 ←	15 23 ←	14 22 ←	13 21 ←	13 20 ←	10 17 ←	10 16 ←	10 15 ←
Houston Pilots H - Morgans Point	13 17 ←	13 17 ←	13 17 ←	13 18 ←	14 18 ←	14 20 ←	15 20 ←	15 21 ←	15 21 ←	15 21 ←	15 22 ←	15 22 ←	15 22 ←	15 22 ←	15 23 ←	15 23 ←	15 23 ←	15 23 ←	14 22 ←	13 21 ←	13 20 ←	12 17 ←	10 16 ←	10 15 ←	
Houston Pilots G - 75/76	14 18 ←	15 20 ←	15 20 ←	15 20 ←	15 21 ←	15 22 ←	15 22 ←	16 23 ←	16 23 ←	16 24 ←	17 24 ←	16 24 ←	16 24 ←	16 24 ←	15 24 ←	15 24 ←	16 24 ←	15 24 ←	15 23 ←	15 23 ←	14 22 ←	13 20 ←	13 20 ←	13 17 ←	
Houston Pilots F - 63/64	14 20 ←	14 20 ←	15 20 ←	15 20 ←	15 21 ←	15 22 ←	15 22 ←	16 23 ←	16 23 ←	16 24 ←	17 24 ←	17 24 ←	16 24 ←	16 24 ←	16 25 ←	15 24 ←	16 24 ←	15 24 ←	15 23 ←	15 23 ←	14 22 ←	13 20 ←	13 20 ←	13 18 ←	
Houston Pilots E - 51/52	14 20 ←	14 20 ←	15 20 ←	15 20 ←	15 21 ←	15 21 ←	15 22 ←	16 22 ←	16 23 ←	16 23 ←	16 24 ←	17 24 ←	16 25 ←	16 25 ←	16 25 ←	16 24 ←	16 24 ←	16 24 ←	15 24 ←	15 24 ←	15 23 ←	14 21 ←	14 21 ←	13 20 ←	
Houston Pilots D - 37/38	13 18 ←	14 20 ←	14 20 ←	14 20 ←	15 20 ←	15 21 ←	15 21 ←	15 22 ←	15 22 ←	15 23 ←	16 24 ←	16 24 ←	16 25 ←	16 25 ←	16 25 ←	16 24 ←	16 24 ←	16 24 ←	16 24 ←	15 24 ←	15 24 ←	15 23 ←	15 21 ←	14 21 ←	13 21 ←
Houston Pilots C - 25/26	13 18 ←	13 18 ←	13 18 ←	13 18 ←	13 20 ←	13 20 ←	14 20 ←	14 21 ←	15 22 ←	15 22 ←	15 23 ←	15 24 ←	16 24 ←	16 24 ←	16 25 ←	15 24 ←	16 24 ←	16 24 ←	16 24 ←	15 24 ←	15 24 ←	15 23 ←	14 22 ←	14 21 ←	13 21 ←
Houston Pilots B - 11/12	10 17 ←	10 17 ←	10 18 ←	10 18 ←	12 18 ←	12 18 ←	12 20 ←	13 20 ←	13 21 ←	13 21 ←	14 22 ←	14 23 ←	15 24 ←	15 24 ←	15 25 ←	15 24 ←	16 24 ←	16 24 ←	15 24 ←	15 24 ←	15 24 ←	14 23 ←	13 21 ←	13 20 ←	12 21 ←
Houston Pilots A - 1 & 2 Bravo	13 18 ←	13 20 ←	14 20 ←	14 20 ←	14 20 ←	14 21 ←	14 21 ←	15 22 ←	15 22 ←	15 23 ←	16 24 ←	17 24 ←	17 25 ←	17 25 ←	17 26 ←	17 26 ←	17 26 ←	17 26 ←	17 26 ←	17 26 ←	16 25 ←	15 24 ←	15 23 ←	15 22 ←	15 22 ←

NOTE: This is automated data that may/may not agree with the official BAM thinking that's found on the daily slides. This data should be used as a guide only.

Houston Pilots: MON. 9/2/2024



Forecast Discussion

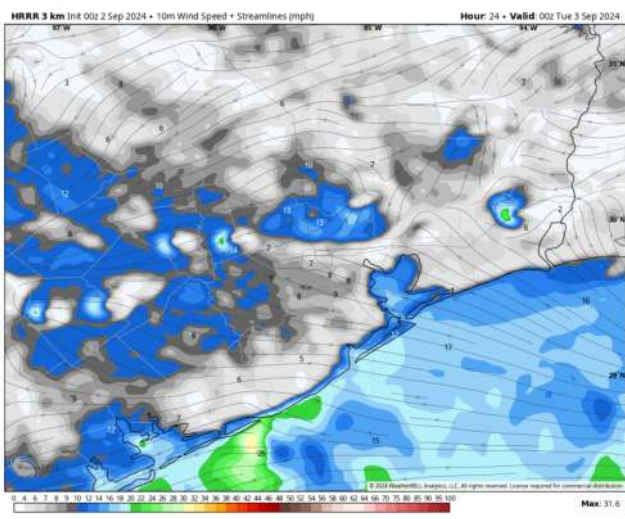
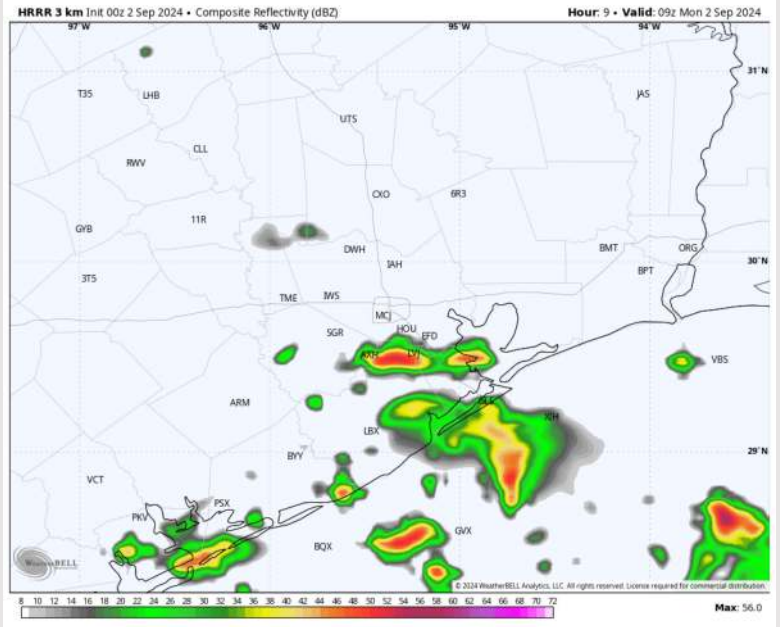
Precip: Scattered to widespread (50-60%) moderate/heavy rainfall will be possible through 4 PM, becoming more isolated in nature after then. Chances remain possible through the overnight, however, most rain/storms are expected to stay north of stations.

Wind: Winds will be out of the SE/E throughout the day. **N of Morgan's Point:** Winds will be at 6 – 11 kts throughout the day. **S of Morgan's Point:** Winds will be 8 – 13 kts throughout the day. **Gusts of up to 20 kts possible through 6 PM.**

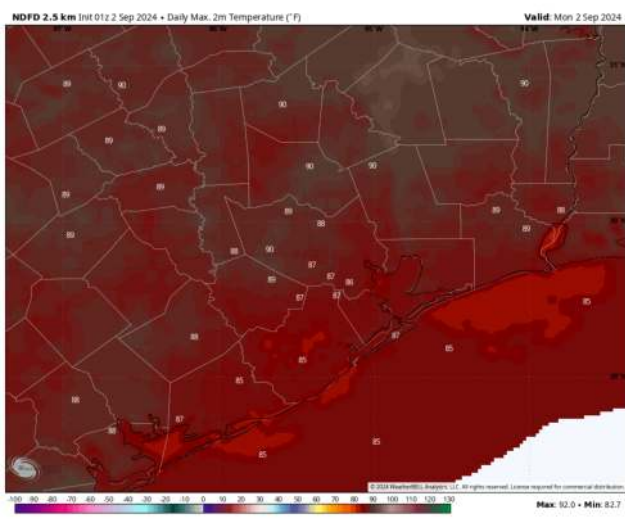
High Temps: **N of Morgan's Point:** Upper 80s F. **S of Morgan's Point:** Mid to upper 80s F.

Visibility: Not favoring any fog concerns today, however, heavy downpours will reduce visibilities.

Precip Image: 4 AM CT



Wind Speed:
7 PM CT



High Temps
Today

Forecast Discussion

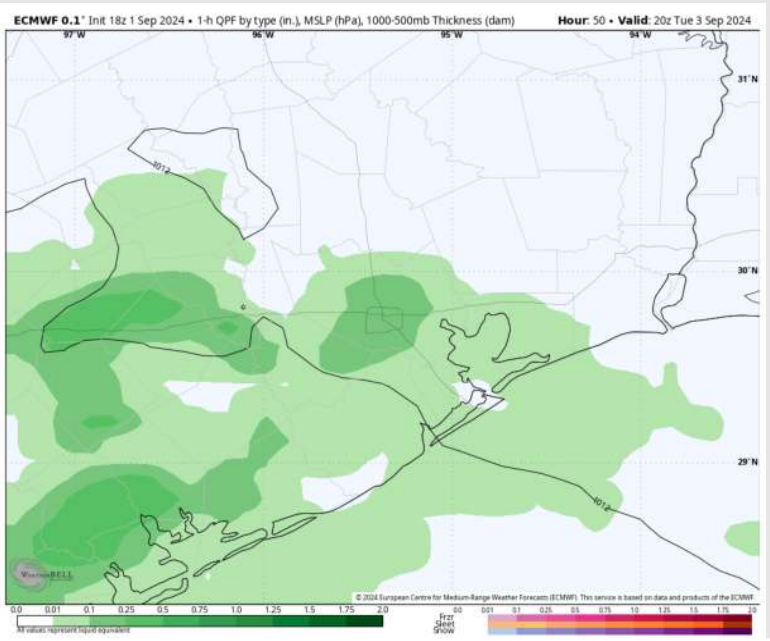
Precip: Scattered to widespread (50% - 60%) moderate to heavy showers in play for all stations throughout the day Tuesday.

Wind: Winds will be out of the E/SE throughout Tuesday. **N of Morgan's Point:** Winds will be sustained 4 - 9 kts throughout the day. **S of Morgan's Point:** Winds will be sustained at 9 - 14 kts, with wind gusts of 20-25 kts throughout the day being possible.

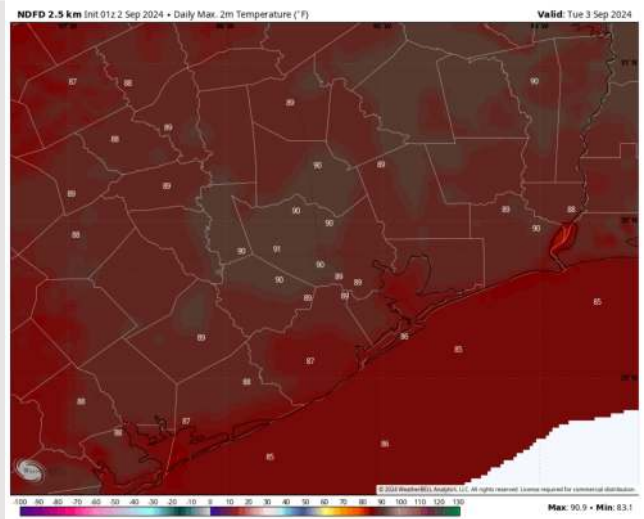
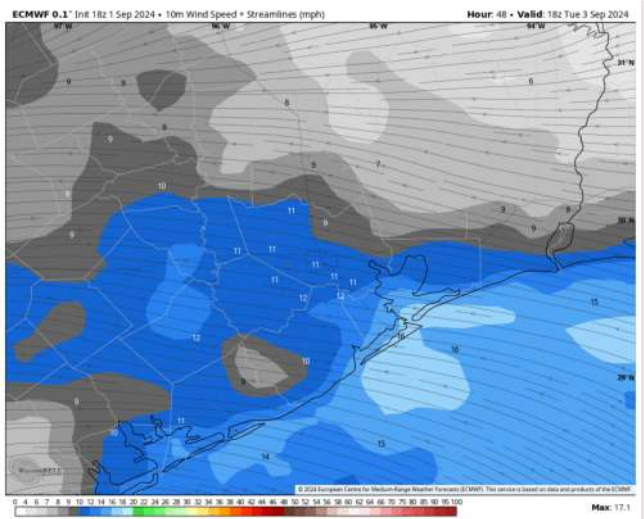
High Temps: **N of Morgan's Point:** Upper 80s F. **S of Morgan's Point:** Mid 80s F.

Visibility: Not anticipating any fog concerns for Tuesday, however, visibilities can be reduced in heavy downpours.

Precip Image: 3 PM CT



Wind Speed:
1 PM CT



High Temps
Tuesday

Houston Pilots: WED. 9/4/2024



Forecast Discussion

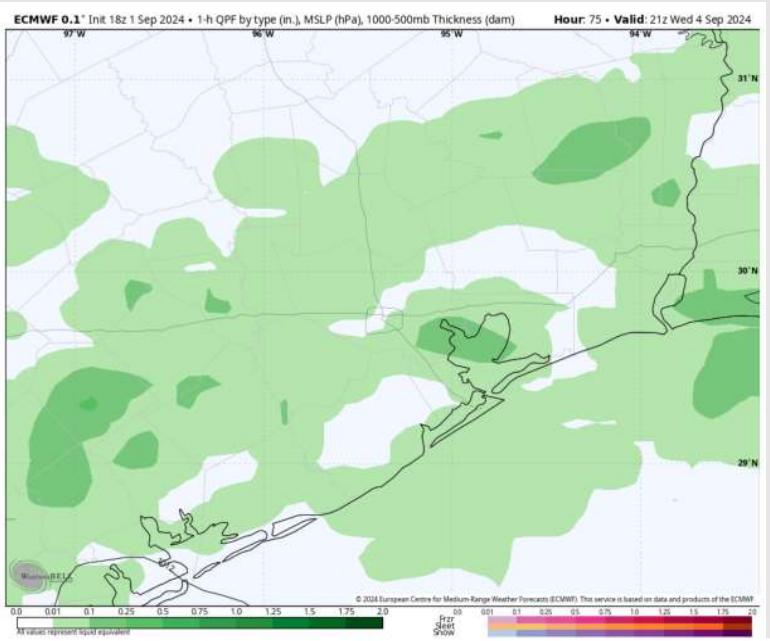
Precip: Scattered (40-50%) showers / storm chances in play for all Stations throughout the day Wednesday.

Wind: Winds will be generally out of the E/SE throughout the day Wednesday. **N of Morgan's Point:** Winds at 5 – 10 kts throughout Wednesday. **S of Morgan's Point:** Winds will be at 10-15 kts through 8 AM, before decreasing slightly to 8-13 kts for the rest of the day. **Non-thunderstorm wind gusts of 20-25 kts can be possible!**

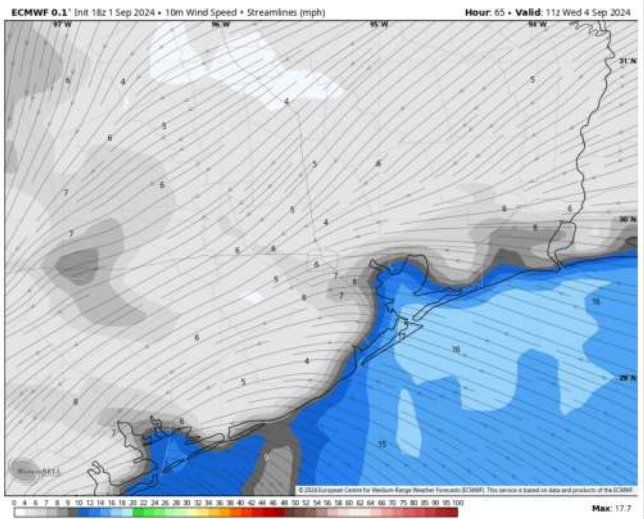
High Temps: **N of Morgan's Point:** Upper 80s F. **S of Morgan's Point:** Mid 80s F.

Visibility: Not anticipating any fog concerns today, however, reduced visibilities will be possible in heavy downpours.

Precip Image: 4 PM CT

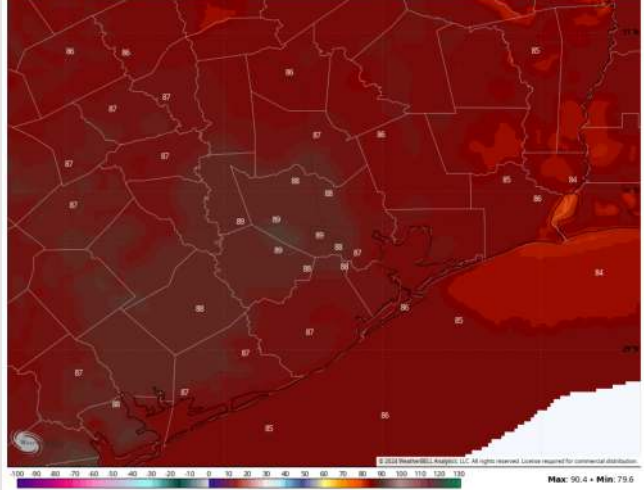


Wind Speed



Wind Speed
6 AM CT

NDFD 2.5 km Init 01z 2 Sep 2024 Daily Max 2m Temperature (F) Valid: Wed 4 Sep 2024

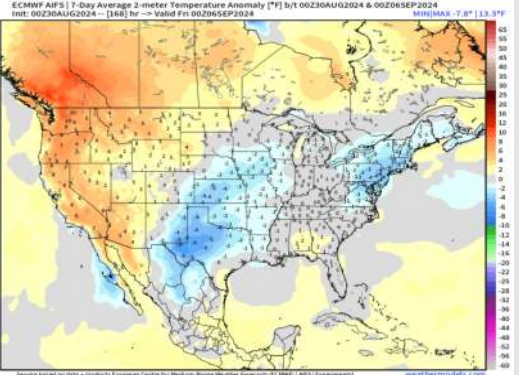


High Temps
Wednesday

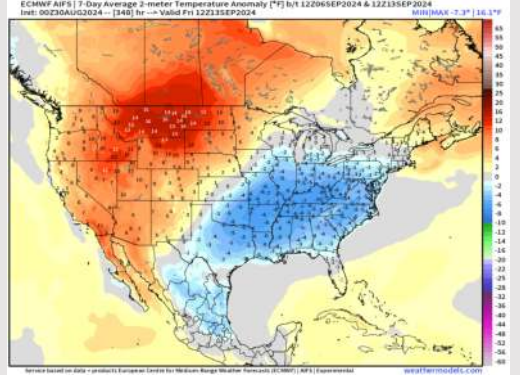
Houston Pilots: 9/2/24



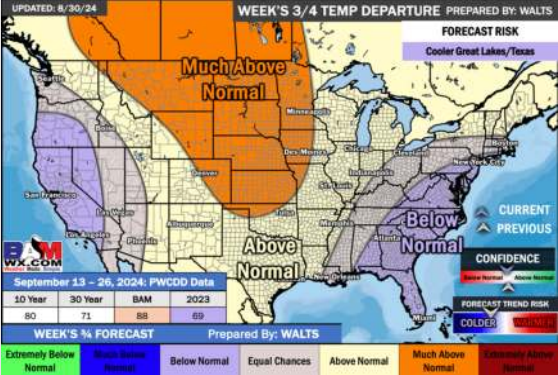
Next 7 Day Temperature Departure



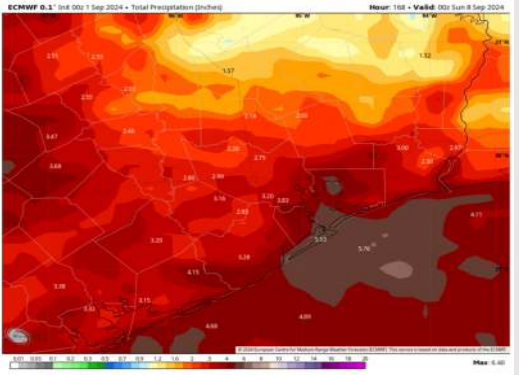
8-14 Day Temperature Departure



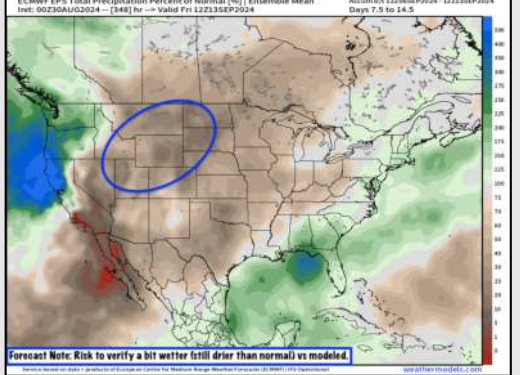
15-30 Day Temperature Departure



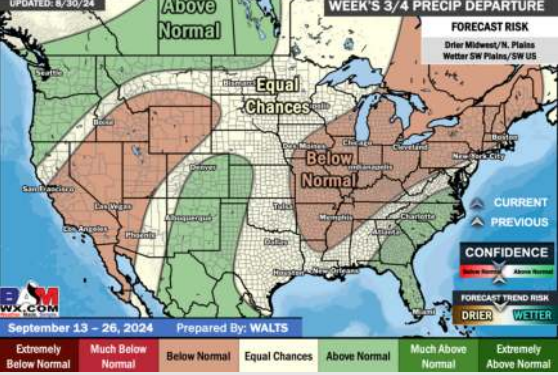
Next 7 Day Total Precipitation



8-14 Day % of Average Precip.



15-30 Day % of Average Precip.



- Temps are expected to be seasonable for the week 1 timeframe. Scattered to widespread rain chances are expected daily through the next week.
- Below normal temperatures are favored into week 2 with seasonable average rain chances. Tropical activity threats for Week 2 and beyond will continue to be monitored
- Above normal temperatures and seasonable precipitation chances are expected for the weeks 3/4 timeframe.