

# Houston Pilots Forecast Package



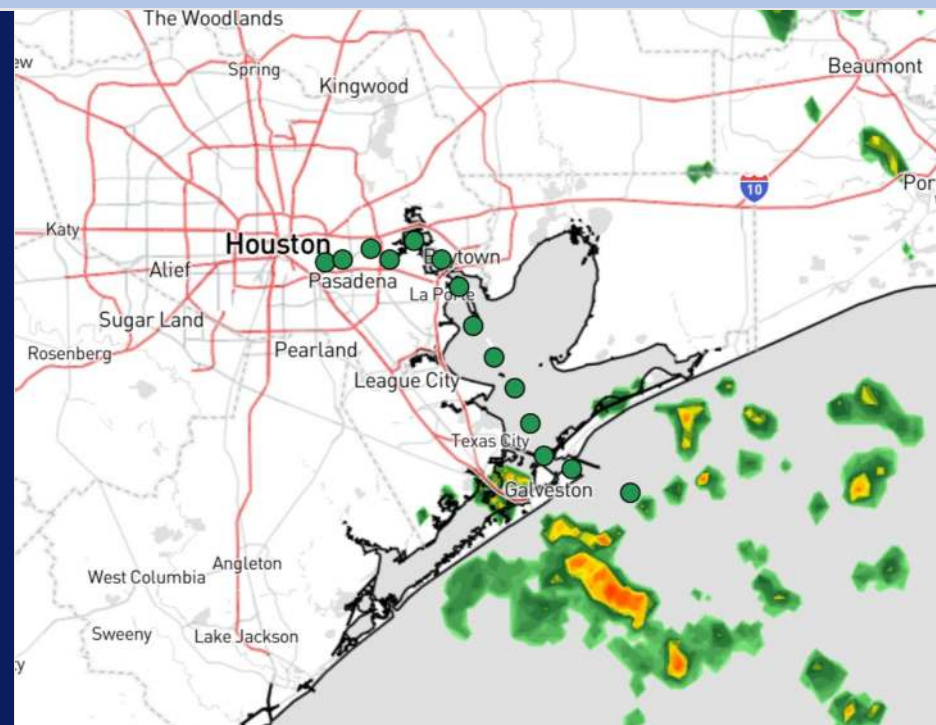
Updated: 10:30 PM CT

Saturday, August 31, 2024

Forecaster: Tyler Riggles

## Weather Headlines

- Frequent periods of downpours / storms favored through the holiday weekend, with **~20 - 25 kt gusts in play.**
- Monitoring a tropical wave as it works towards the Caribbean. Check tropical slides for more info.
- Not favoring any fog risks over the next few days.



Current Radar: 10:21 PM CT



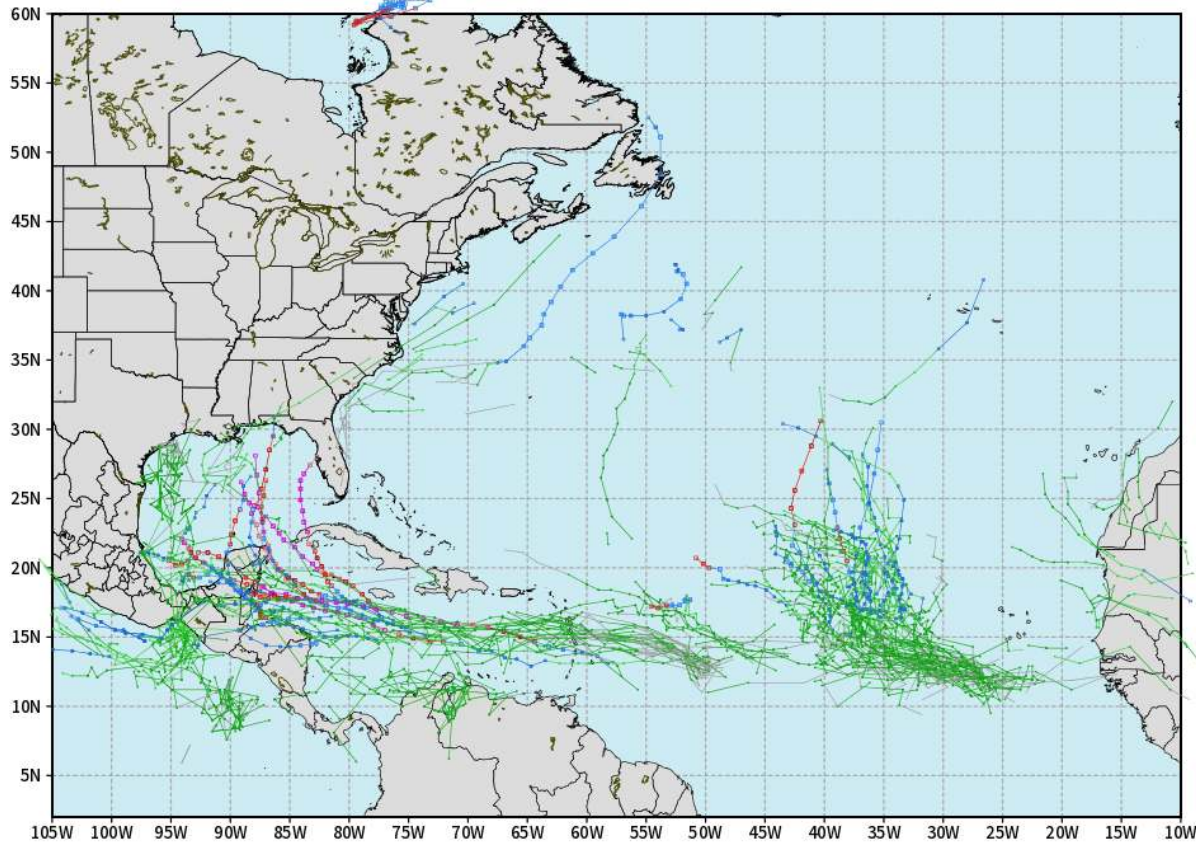
As always, please do not hesitate to reach out to us with any forecast questions via the chat option on Clarity or our on-call number, **(317)-560-8122** press **1** for forecast questions.

# Houston Pilots Tropical Update

## European Model Next 10 Days - Tropical Tracks

ECMWF ATLANTIC EPS Cyclone Locations --> Next [10-days]  
INIT: 12Z31AUG2024 --> UNTIL 12Z10SEP2024

o-o ENSEMBLE MEAN  
o-o 1000 - 1010 hPa  
o-o 980 - 999 hPa  
o-o 960 - 979 hPa  
o-o 950 - 959 hPa  
o-o < 950 hPa



weathermodels.com

Monitoring a broad area of low pressure off the SE TX Coast as it works slowly northward. Further development remains unlikely.

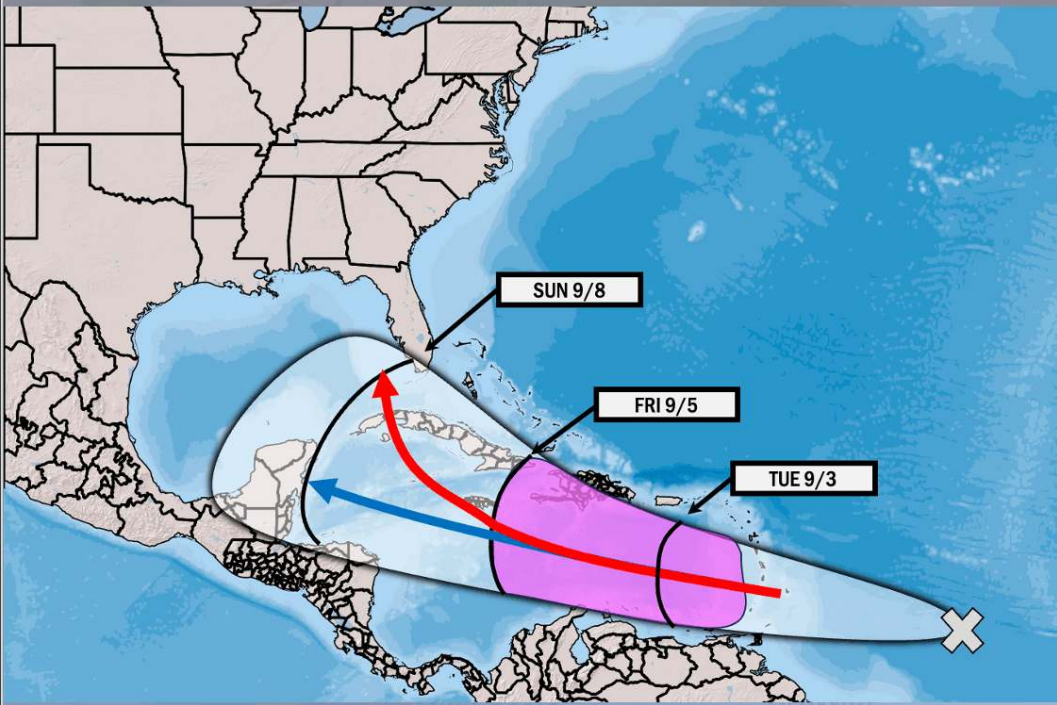
Favoring a Tropical System to continue to work into the E Caribbean started the start of next week and development continues to look likely towards the middle of next week. A close eye will need to continue to be on this system for possible impacts in the Gulf.

# Houston Pilots Tropical Update



 **Potential Francine?**

**TROPICAL INSIGHT** 3:45 PM ET Saturday August 31, 2024 Forecaster: Lowry



**TIMING:** August 31<sup>st</sup> – September 8<sup>th</sup>

- FORECAST NOTES:**
- ✓ Tracking general progression of tropical wave above!
  - ✓ Area in purple is area where formation chances are highest!
  - ✓ **Red Arrow:** Faster formation and quicker recurve solution
  - ✓ **Blue Arrow:** Slower formation and progression into S Caribbean



# Houston Pilots Visibility Chart (miles)



## Forecast Confidence



Visibility	Sun 12 am	Sun 1 am	Sun 2 am	Sun 3 am	Sun 4 am	Sun 5 am	Sun 6 am	Sun 7 am	Sun 8 am	Sun 9 am	Sun 10 am	Sun 11 am	Sun 12 pm	Sun 1 pm	Sun 2 pm	Sun 3 pm	Sun 4 pm	Sun 5 pm	Sun 6 pm	Sun 7 pm	Sun 8 pm	Sun 9 pm	Sun 10 pm	Sun 11 pm
Houston Pilots N - 610 Bridge	10.1	10.1	10.1	10.1	10.1	9	10.1	10.1	8	6.9	6.9	6.9	7.9	10.1	10.1	10.1	10.1	10.1	10.1	10.1	10.1	10.1	10.1	10.1
Houston Pilots M - Kinder 1	10.1	10.1	10.1	10.1	10.1	10.1	10.1	10.1	8	6.9	6.9	6.9	7.9	10.1	10.1	10.1	10.1	10.1	10.1	10.1	10.1	10.1	10.1	10.1
Houston Pilots L - Greens Bayou	10.1	10.1	10.1	10.1	10.1	10.1	10.1	10.1	8	6.9	6.9	6.9	7.9	10.1	10.1	10.1	10.1	10.1	10.1	10.1	10.1	10.1	10.1	10.1
Houston Pilots K - Shell Crude	10.1	10.1	10.1	10.1	10.1	10.1	10.1	10.1	8	6.9	6.9	6.9	7.9	10.1	10.1	10.1	10.1	10.1	10.1	10.1	10.1	10.1	10.1	10.1
Houston Pilots J - Lynchburg Ferries	10.1	10.1	10.1	10.1	9	10.1	10.1	10.1	8	6.9	6.9	6.9	7.9	10.1	10.1	10.1	10.1	10.1	10.1	10.1	10.1	10.1	10.1	10.1
Houston Pilots I - Exxon 3	10.1	7.9	10.1	10.1	9	10.1	10.1	10.1	8	6.9	6.9	6.9	7.9	10.1	10.1	10.1	10.1	10.1	10.1	10.1	10.1	10.1	10.1	10.1
Houston Pilots H - Morgans Point	10.1	7.9	10.1	6.9	9	10.1	10.1	10.1	8	6.9	6.9	6.9	7.9	10.1	10.1	10.1	10.1	10.1	10.1	10.1	10.1	10.1	10.1	10.1
Houston Pilots G - 75/76	10.1	7.9	6.9	6.9	9	10.1	10.1	10.1	10.1	6.9	6.9	6.9	6.9	10.1	10.1	10.1	10.1	10.1	10.1	10.1	10.1	10.1	10.1	9
Houston Pilots F - 63/64	10.1	7.9	4.9	6.9	9	10.1	10.1	10.1	10.1	6.9	6.9	6.9	6.9	9	10.1	10.1	10.1	10.1	10.1	10.1	10.1	10.1	10.1	9
Houston Pilots E - 51/52	6.9	6.9	4.9	10.1	10.1	10.1	10.1	10.1	10.1	7.9	6.9	6.9	6.9	9	10.1	10.1	10.1	10.1	10.1	10.1	10.1	10.1	10.1	9
Houston Pilots D - 37/38	6.9	6.9	8	10.1	10.1	10.1	10.1	10.1	10.1	7.9	6.9	6.9	6.9	9	10.1	10.1	10.1	10.1	10.1	10.1	10.1	10.1	10.1	9
Houston Pilots C - 25/26	8	6.9	10.1	10.1	10.1	10.1	10.1	10.1	10.1	7.9	6.9	6.9	6.9	9	10.1	10.1	10.1	10.1	10.1	10.1	10.1	10.1	10.1	9
Houston Pilots B - 11/12	5.9	9	10.1	10.1	10.1	10.1	10.1	10.1	10.1	7.9	6.9	6.9	6.9	9	10.1	10.1	10.1	10.1	10.1	10.1	10.1	10.1	10.1	9
Houston Pilots A - 1 & 2 Bravo	10.1	10.1	10.1	10.1	10.1	10.1	10.1	10.1	10.1	9	6.9	6.9	7.9	10.1	10.1	10.1	10.1	10.1	10.1	10.1	10.1	10.1	10.1	12

**NOTE: This is automated data that may/may not agree with the official BAM thinking that's found on the daily slides or special visibility report slides. This data should be used as a guide only**

# Houston Pilots Wind Chart



**Forecast Confidence**

Above Normal  Below Normal

Sustained wind 10 Knots

Gusts 15 Knots

Wind from the SE

**Example**

10

15

↙

Wind	Sun 12 am	Sun 1 am	Sun 2 am	Sun 3 am	Sun 4 am	Sun 5 am	Sun 6 am	Sun 7 am	Sun 8 am	Sun 9 am	Sun 10 am	Sun 11 am	Sun 12 pm	Sun 1 pm	Sun 2 pm	Sun 3 pm	Sun 4 pm	Sun 5 pm	Sun 6 pm	Sun 7 pm	Sun 8 pm	Sun 9 pm	Sun 10 pm	Sun 11 pm
Houston Pilots N - 610 Bridge	5 10 ↙	5 10 ↙	5 10 ↙	5 10 ↙	6 10 ↙	6 12 ↙	6 12 ↙	6 13 ↙	6 13 ↙	7 14 ↙	7 14 ↙	8 15 ↙	8 16 ↙	8 16 ↙	8 17 ↙	8 18 ↙	8 18 ↙	8 17 ↙	8 17 ↙	8 16 ↙	8 15 ↙	7 14 ↙	6 13 ↙	6 13 ↙
Houston Pilots M - Kinder 1	5 10 ↙	5 10 ↙	5 10 ↙	5 10 ↙	6 10 ↙	6 12 ↙	6 12 ↙	6 13 ↙	6 13 ↙	7 14 ↙	7 15 ↙	8 15 ↙	8 16 ↙	8 16 ↙	8 17 ↙	9 18 ↙	8 18 ↙	8 17 ↙	8 17 ↙	8 16 ↙	7 15 ↙	7 14 ↙	6 13 ↙	6 13 ↙
Houston Pilots L - Greens Bayou	5 10 ↙	5 10 ↙	5 10 ↙	5 10 ↙	5 10 ↙	6 12 ↙	6 12 ↙	6 13 ↙	6 13 ↙	7 14 ↙	7 15 ↙	8 15 ↙	8 16 ↙	8 16 ↙	8 17 ↙	8 17 ↙	9 17 ↙	8 17 ↙	8 16 ↙	8 15 ↙	7 14 ↙	6 13 ↙	6 13 ↙	6 13 ↙
Houston Pilots K - Shell Crude	5 10 ↙	5 10 ↙	5 10 ↙	5 10 ↙	5 10 ↙	6 12 ↙	6 12 ↙	6 13 ↙	6 13 ↙	7 14 ↙	7 15 ↙	8 15 ↙	8 16 ↙	8 16 ↙	8 17 ↙	8 17 ↙	8 17 ↙	8 16 ↙	8 15 ↙	8 14 ↙	7 14 ↙	6 13 ↙	6 13 ↙	6 13 ↙
Houston Pilots J - Lynchburg Ferries	5 10 ↙	5 10 ↙	5 10 ↙	5 10 ↙	5 10 ↙	5 12 ↙	6 12 ↙	6 13 ↙	6 14 ↙	6 14 ↙	7 15 ↙	8 15 ↙	8 16 ↙	8 16 ↙	8 16 ↙	8 17 ↙	8 17 ↙	8 16 ↙	8 15 ↙	8 14 ↙	7 14 ↙	6 13 ↙	6 13 ↙	6 13 ↙
Houston Pilots I - Exxon 3	9 13 ↙	9 13 ↙	9 13 ↙	9 13 ↙	9 14 ↙	9 14 ↙	10 15 ↙	10 15 ↙	10 15 ↙	10 15 ↙	10 15 ↙	10 16 ↙	10 16 ↙	10 16 ↙	12 18 ↙	12 18 ↙	12 20 ↙	12 17 ↙	12 17 ↙	12 16 ↙	10 16 ↙	10 15 ↙	10 15 ↙	10 16 ↙
Houston Pilots H - Morgans Point	8 13 ↙	8 13 ↙	8 13 ↙	8 13 ↙	9 13 ↙	9 14 ↙	9 14 ↙	10 15 ↙	10 15 ↙	10 15 ↙	10 15 ↙	10 17 ↙	10 17 ↙	10 17 ↙	12 18 ↙	12 18 ↙	12 18 ↙	12 17 ↙	12 16 ↙	10 16 ↙	10 15 ↙	10 15 ↙	10 15 ↙	10 16 ↙
Houston Pilots G - 75/76	10 14 ↙	10 14 ↙	10 14 ↙	10 14 ↙	10 14 ↙	10 15 ↙	10 15 ↙	10 15 ↙	12 16 ↙	12 16 ↙	12 17 ↙	12 17 ↙	12 18 ↙	12 18 ↙	12 18 ↙	13 20 ↙	12 20 ↙	12 18 ↙	12 18 ↙	12 17 ↙	10 17 ↙	12 17 ↙	13 17 ↙	13 17 ↙
Houston Pilots F - 63/64	10 14 ↙	9 14 ↙	9 14 ↙	9 14 ↙	9 14 ↙	10 14 ↙	10 15 ↙	10 15 ↙	12 15 ↙	12 15 ↙	12 16 ↙	12 16 ↙	12 17 ↙	12 17 ↙	12 18 ↙	12 18 ↙	12 20 ↙	12 17 ↙	12 17 ↙	12 17 ↙	10 17 ↙	12 17 ↙	13 17 ↙	13 17 ↙
Houston Pilots E - 51/52	9 14 ↙	9 14 ↙	9 13 ↙	9 13 ↙	9 13 ↙	9 14 ↙	9 14 ↙	10 15 ↙	10 15 ↙	10 15 ↙	12 16 ↙	12 16 ↙	12 17 ↙	12 17 ↙	12 18 ↙	12 18 ↙	12 18 ↙	12 17 ↙	12 17 ↙	12 17 ↙	12 17 ↙	12 17 ↙	13 17 ↙	13 17 ↙
Houston Pilots D - 37/38	8 13 ↙	8 13 ↙	8 13 ↙	8 13 ↙	8 13 ↙	8 13 ↙	9 14 ↙	9 14 ↙	10 15 ↙	10 15 ↙	10 16 ↙	10 16 ↙	10 17 ↙	10 17 ↙	10 17 ↙	12 18 ↙	12 18 ↙	12 18 ↙	12 17 ↙	12 17 ↙	10 17 ↙	12 17 ↙	12 17 ↙	13 17 ↙
Houston Pilots C - 25/26	8 13 ↙	8 12 ↙	8 12 ↙	8 12 ↙	8 12 ↙	8 13 ↙	8 13 ↙	8 14 ↙	9 14 ↙	9 15 ↙	10 15 ↙	10 16 ↙	10 16 ↙	10 17 ↙	10 17 ↙	10 17 ↙	10 17 ↙	10 17 ↙	10 17 ↙	10 17 ↙	10 16 ↙	10 16 ↙	10 16 ↙	12 17 ↙
Houston Pilots B - 11/12	7 12 ↙	7 12 ↙	7 12 ↙	6 12 ↙	6 12 ↙	7 12 ↙	7 12 ↙	7 13 ↙	8 13 ↙	8 14 ↙	8 14 ↙	9 15 ↙	9 16 ↙	10 16 ↙	10 16 ↙	10 17 ↙	10 17 ↙	10 17 ↙	10 17 ↙	10 17 ↙	10 16 ↙	9 16 ↙	10 16 ↙	10 16 ↙
Houston Pilots A - 1 & 2 Bravo	8 13 ↙	8 13 ↙	8 13 ↙	8 13 ↙	8 13 ↙	8 13 ↙	8 13 ↙	8 13 ↙	8 14 ↙	9 14 ↙	10 15 ↙	10 16 ↙	10 16 ↙	10 16 ↙	10 16 ↙	10 17 ↙	10 17 ↙	10 17 ↙	12 18 ↙	12 18 ↙	12 18 ↙	12 17 ↙	12 17 ↙	13 17 ↙

**NOTE: This is automated data that may/may not agree with the official BAM thinking that's found on the daily slides. This data should be used as a guide only.**

# Houston Pilots: SUN. 9/1/2024



## Forecast Discussion

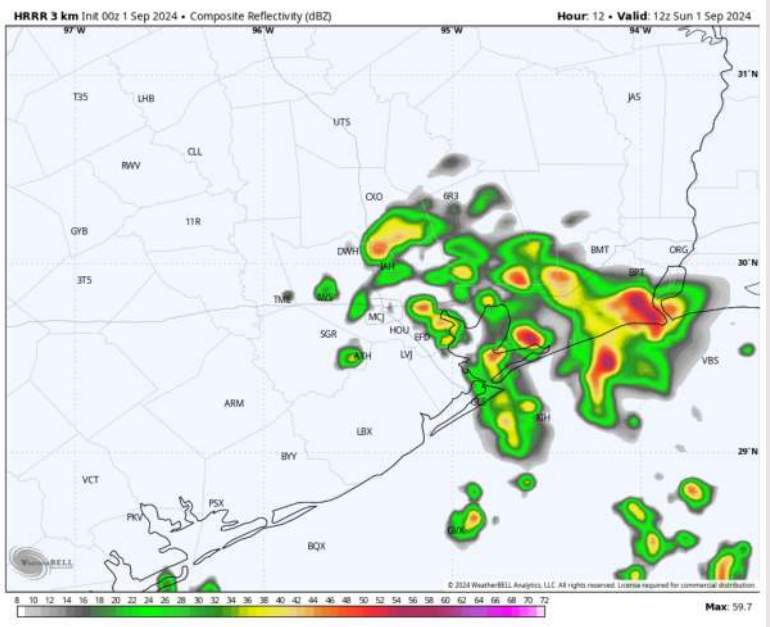
**Precip:** Scattered (40-50%) showers / storm chances continue for all Stations throughout the day.

**Wind:** Winds will be generally out of the E/NE throughout the day. **N of Morgan's Point:** Winds at 5 – 10 kts throughout the day. **S of Morgan's Point:** Winds will be sustained at 9 – 14 kts through 10 AM before increasing to 12-17 kts the rest of the day. **Non-thunderstorm wind gusts of 20-25 kts can be possible!**

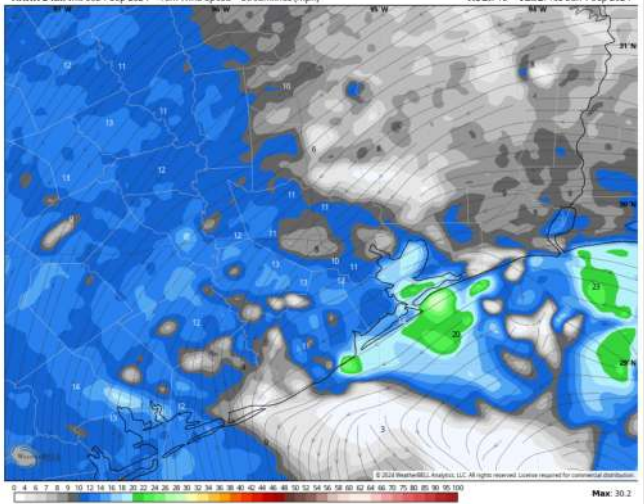
**High Temps:** **N of Morgan's Point:** Mid/Upper 80's F. **S of Morgan's Point:** Mid 80s F.

**Visibility:** Not anticipating any fog concerns today, however, reduced visibilities will be possible in heavy downpours.

## Precip Image: 7 AM CT

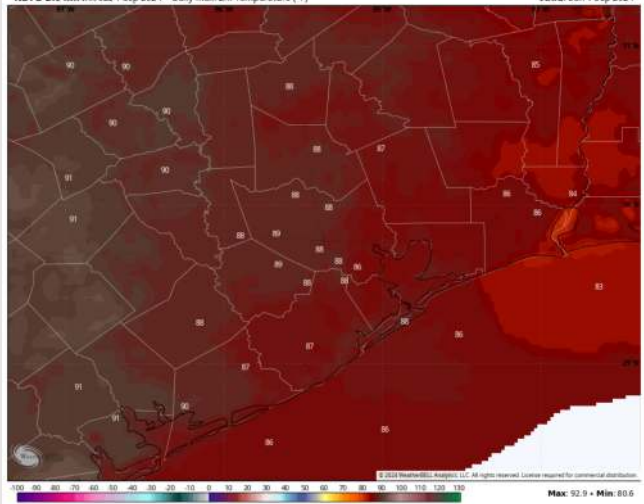


HRRR 3 km Init 00z 1 Sep 2024 • 10m Wind Speed + Streamlines (mph) Hour: 18 • Valid: 18z Sun 1 Sep 2024



Wind Speed  
1 PM CT

NDFD 2.5 km Init 02z 1 Sep 2024 • Daily Max: 2m Temperature (F) Valid: Sun 1 Sep 2024



High Temps  
Today

# Houston Pilots: MON. 9/2/2024



## Forecast Discussion

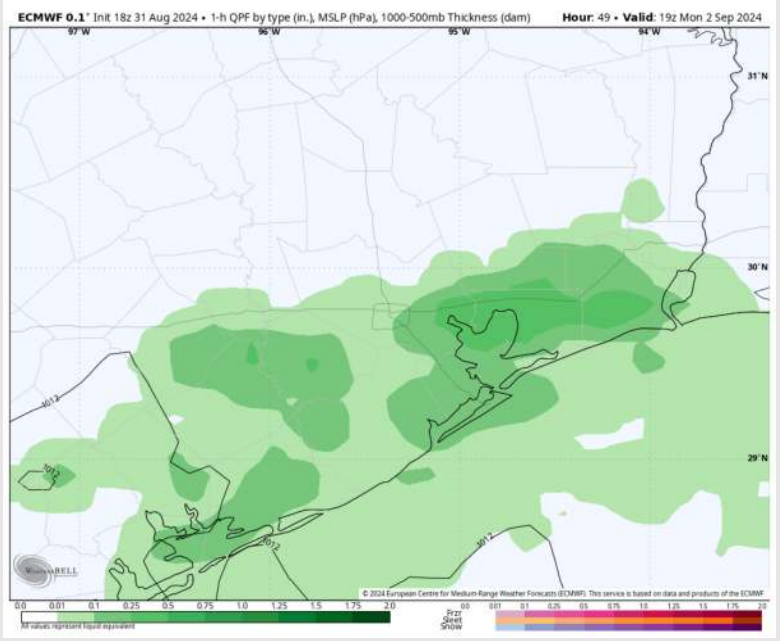
**Precip:** Scattered to widespread (60-70%) moderate/heavy rainfall will be possible through 8 PM Monday before chances decrease greatly (30-40%) through the rest of the evening on Monday.

**Wind:** Winds will out of the SE/E throughout the day Monday. **N of Morgan's Point:** Winds will be at 5 – 10 kts throughout the day. **S of Morgan's Point:** Winds will be 8 – 13 kts throughout the day on Monday. **Gusts of up to 20 kts possible through 8 PM MON.**

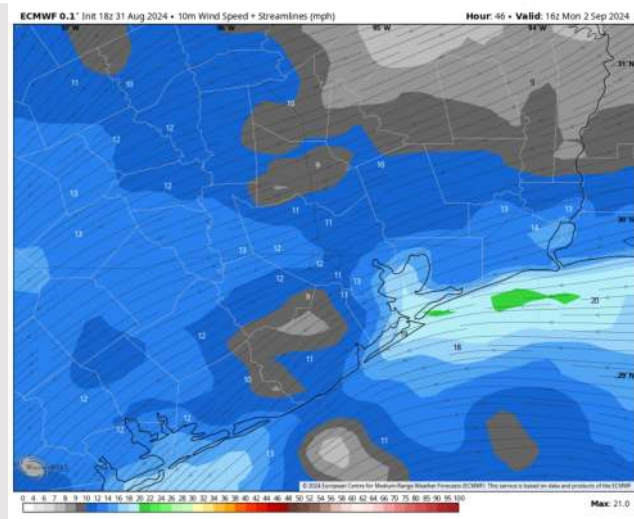
**High Temps:** **N of Morgan's Point:** Mid 80s F. **S of Morgan's Point:** Mid 80s F.

**Visibility:** Not favoring any fog concerns Monday, however, heavy downpours will reduce visibilities.

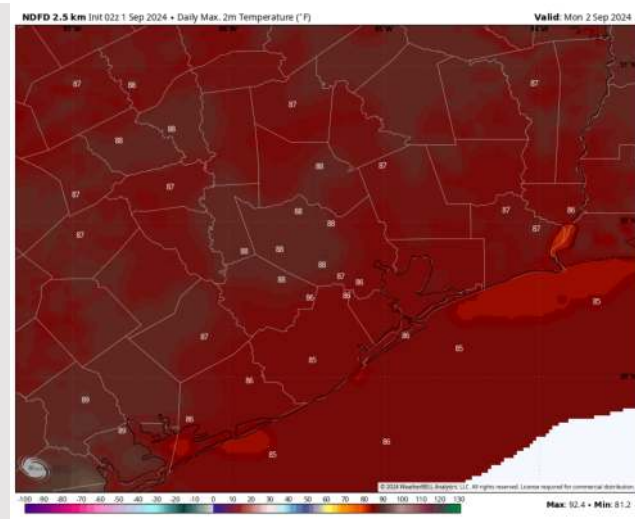
## Precip Image: 2 PM CT



Wind Speed:  
11 AM CT



High Temps  
Monday



# Houston Pilots: TUE. 9/3/2024



## Forecast Discussion

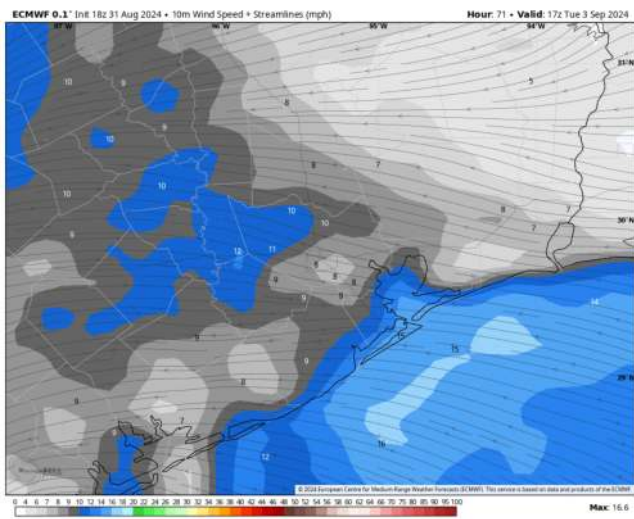
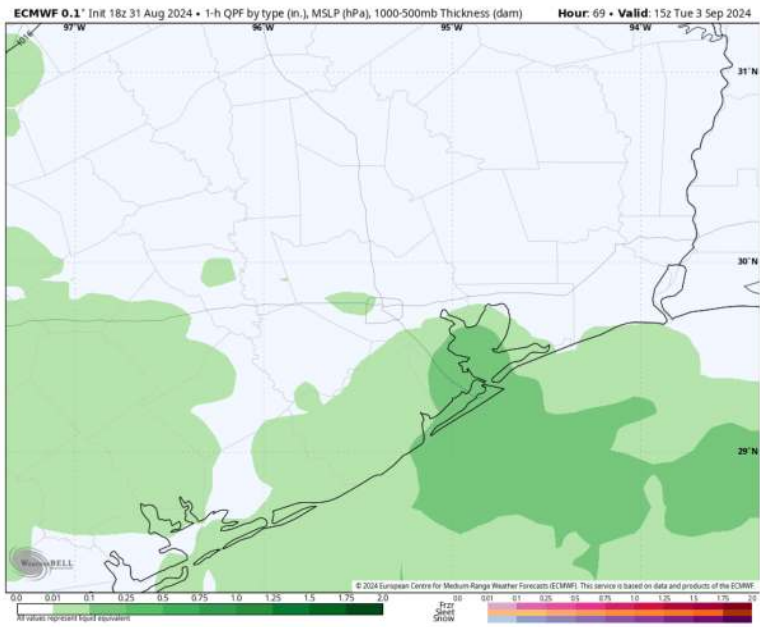
**Precip:** Scattered to widespread (60-70%) moderate to heavy showers in play for all stations throughout the day Tuesday.

**Wind:** Winds will be out of the E/SE throughout Tuesday. **N of Morgan's Point:** Winds will be sustained 4-9 kts throughout the day. **S of Morgan's Point:** Winds will be sustained at 9 – 14 kts, **with wind gusts of 20-25 kts throughout the day being possible.**

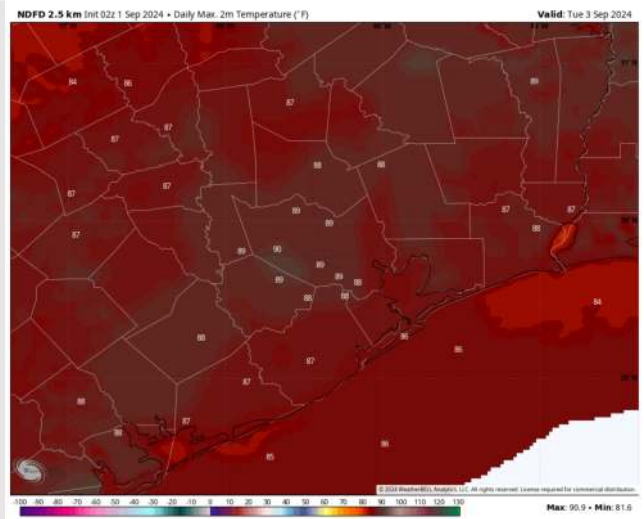
**High Temps:** **N of Morgan's Point:** Upper 80s F. **S of Morgan's Point:** Mid 80s F.

**Visibility:** Not anticipating any fog concerns for Tuesday, however, visibilities can be reduced in heavy downpours.

## Precip Image: 10 AM CT



Wind Speed:  
12 PM CT



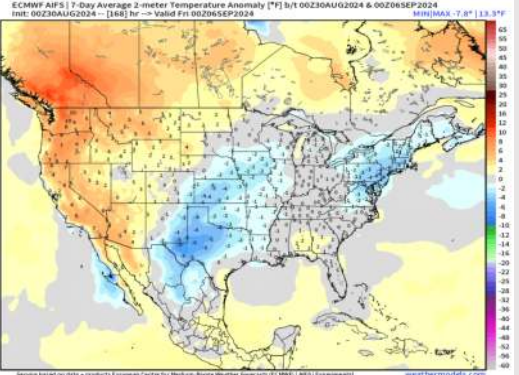
High Temps  
Tuesday



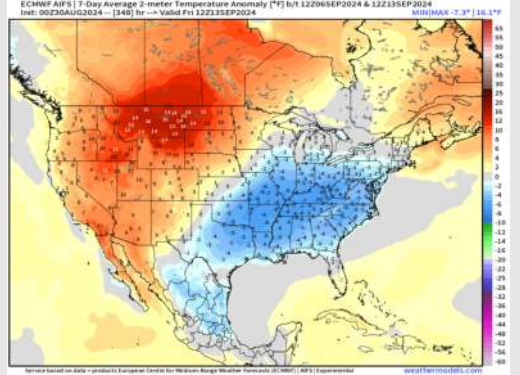
# Houston Pilots: 9/1/24



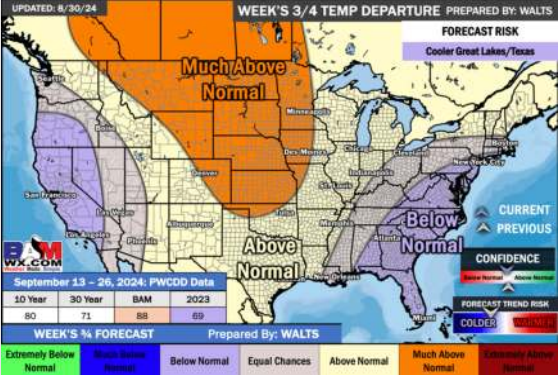
**Next 7 Day Temperature Departure**



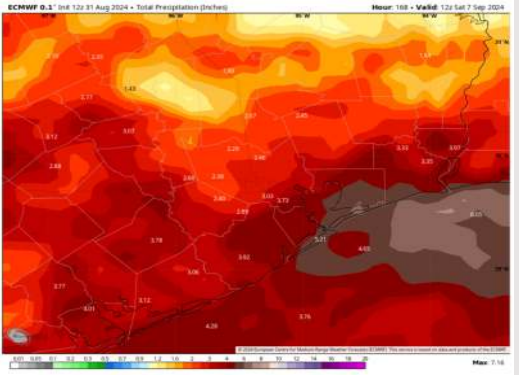
**8-14 Day Temperature Departure**



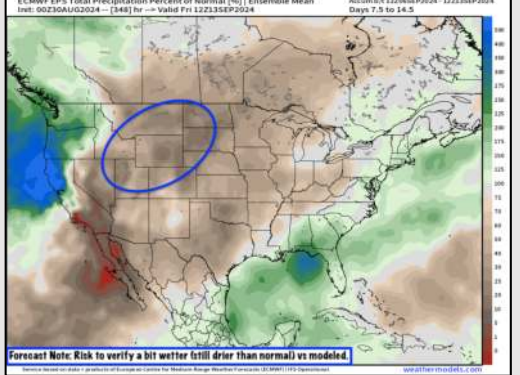
**15-30 Day Temperature Departure**



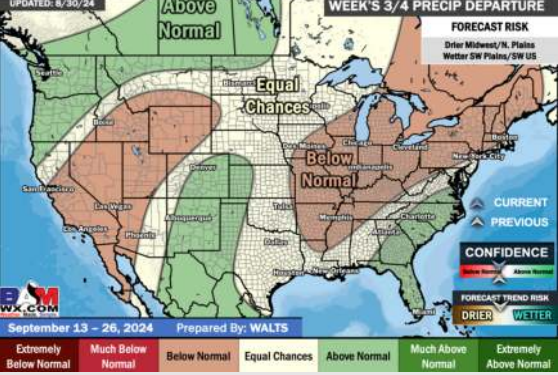
**Next 7 Day Total Precipitation**



**8-14 Day % of Average Precip.**



**15-30 Day % of Average Precip.**



- Temps are expected to be seasonable for the week 1 timeframe. Scattered to widespread rain chances are expected daily through the next week.
- Below normal temperatures are favored into week 2 with seasonable average rain chances. Tropical activity threats for Week 2 and beyond will continue to be monitored
- Above normal temperatures and seasonable precipitation chances are expected for the weeks 3/4 timeframe.