

Houston Pilots Forecast Package



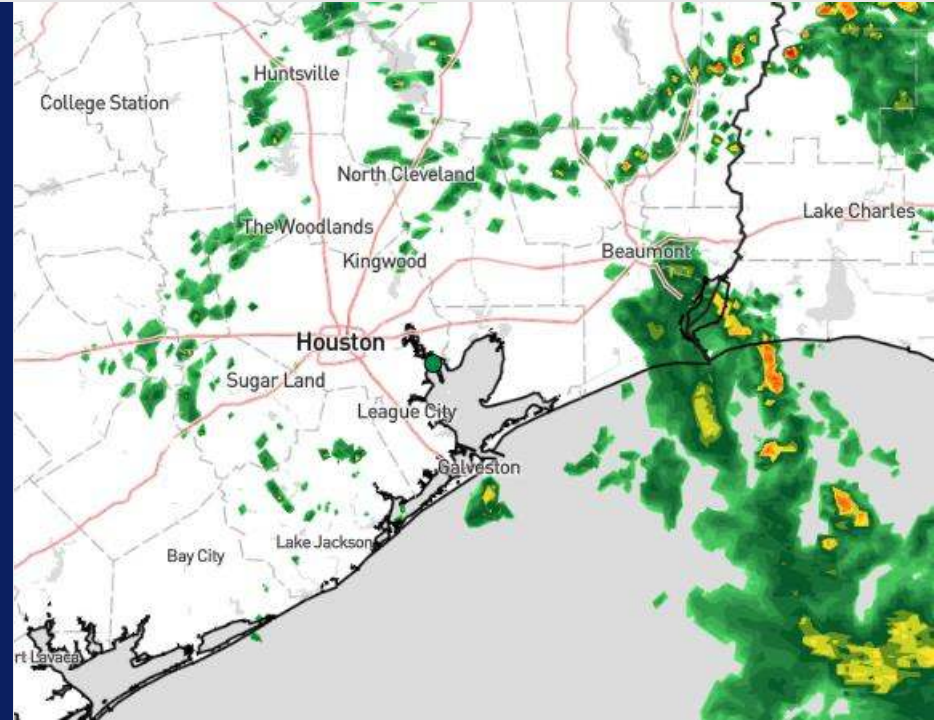
Updated: 12:30 PM CT

Saturday, August 31, 2024

Forecaster: Jonathan Kipper

Weather Headlines

- Frequent periods of downpours / storms favored through the holiday weekend, with **~25 – 35 kt gusts in play.**
- Monitoring a tropical wave as it works towards the Caribbean. Check tropical slides for more info.
- Not favoring any fog risks over the next few days.



Current Radar: 12:25 PM CT



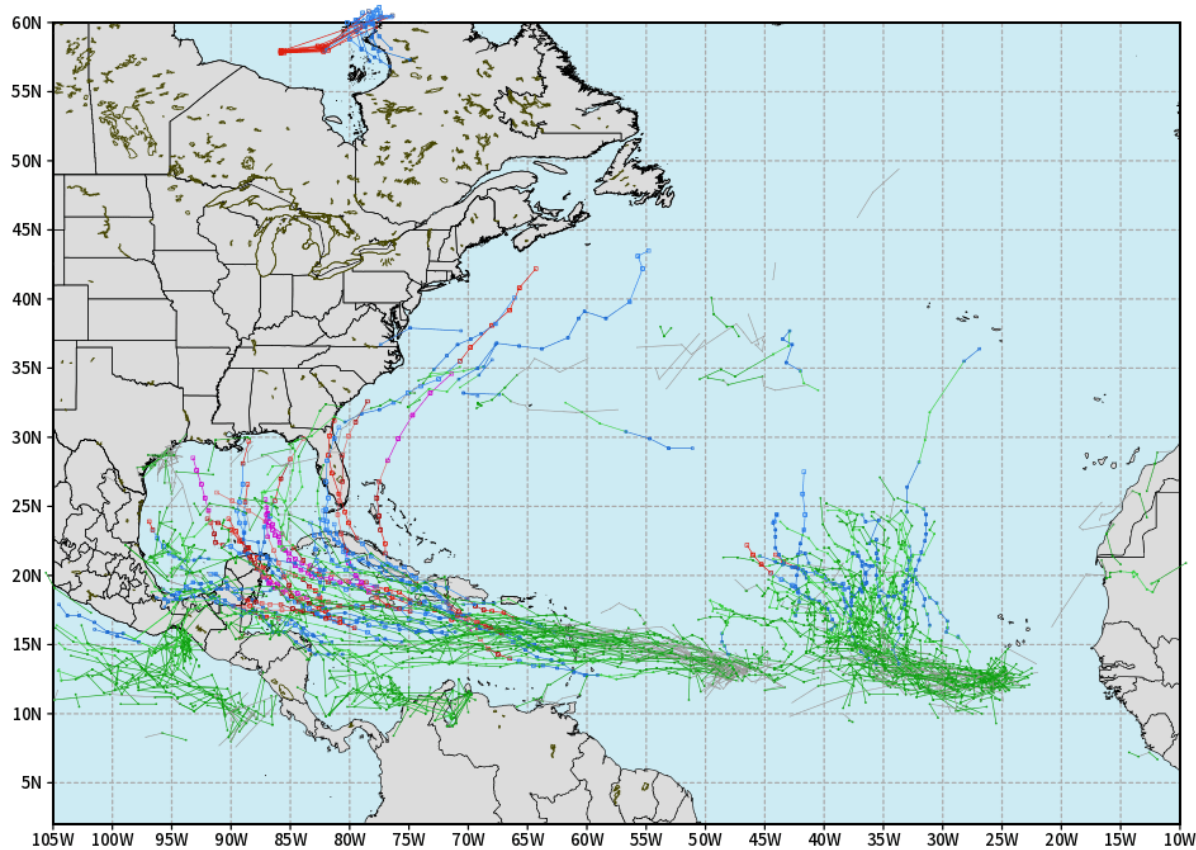
As always, please do not hesitate to reach out to us with any forecast questions via the chat option on Clarity or our on-call number, **(317)-560-8122** press 1 for forecast questions.

Houston Pilots Tropical Update

European Model Next 10 Days - Tropical Tracks

ECMWF ATLANTIC EPS Cyclone Locations --> Next [10-days]
INIT: 00Z31AUG2024 --> UNTIL 00Z10SEP2024

o-o ENSEMBLE MEAN
o-o 1000 - 1010 hPa
o-o 980 - 999 hPa
o-o 960 - 979 hPa
o-o 950 - 959 hPa
o-o < 950 hPa



weathermodels.com

Monitoring a broad area of low pressure off the SE TX Coast as it works slowly northward. Further development remains unlikely.

Favoring a Tropical System to continue to work into the E Caribbean started the start of next week and development continues to look likely towards the middle of next week. A close eye will need to continue to be on this system for possible impacts in the Gulf.

Houston Pilots Tropical Update

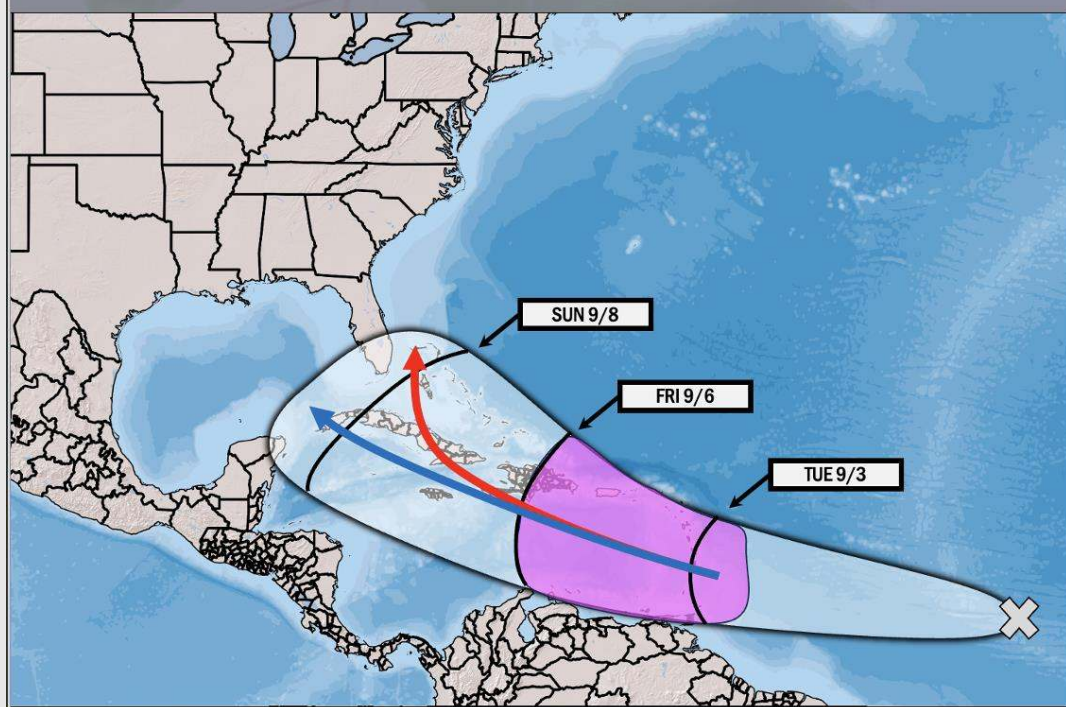


Potential Francine?

TROPICAL INSIGHT

10:40 PM ET Thursday August 29, 2024

Forecaster: Lowry



TIMING: August 29th – September 8th

FORECAST NOTES:

- ✓ Tracking general progression of tropical wave above!
- ✓ Area in purple is area where formation chances are highest!
- ✓ Red Arrow: Faster formation and quicker recurve solution
- ✓ Blue Arrow: Slower formation and progression into Gulf



Houston Pilots Visibility Chart (miles)



Forecast Confidence



Visibility	Sat 2 pm	Sat 3 pm	Sat 4 pm	Sat 5 pm	Sat 6 pm	Sat 7 pm	Sat 8 pm	Sat 9 pm	Sat 10 pm	Sat 11 pm	Sun 12 am	Sun 1 am	Sun 2 am	Sun 3 am	Sun 4 am	Sun 5 am	Sun 6 am	Sun 7 am	Sun 8 am	Sun 9 am	Sun 10 am	Sun 11 am	Sun 12 pm	Sun 1 pm
Houston Pilots N - 610 Bridge	10.1	10.1	10.1	10.1	10.1	10.1	10.1	10.1	10.1	10.1	10.1	10.1	10.1	10.1	9	10.1	10.1	10.1	10.1	9	6.9	6.9	9	10.1
Houston Pilots M - Kinder 1	10.1	10.1	10.1	10.1	10.1	10.1	10.1	10.1	10.1	10.1	10.1	10.1	10.1	10.1	9	10.1	10.1	10.1	10.1	9	6.9	6.9	9	10.1
Houston Pilots L - Greens Bayou	10.1	10.1	10.1	10.1	10.1	10.1	10.1	10.1	10.1	10.1	10.1	10.1	10.1	10.1	9	10.1	10.1	10.1	10.1	9	6.9	6.9	9	10.1
Houston Pilots K - Shell Crude	10.1	10.1	10.1	10.1	10.1	10.1	10.1	10.1	10.1	10.1	10.1	10.1	10.1	10.1	9	10.1	10.1	10.1	10.1	10.1	6.9	6.9	9	10.1
Houston Pilots J - Lynchburg Ferries	10.1	10.1	10.1	10.1	10.1	10.1	10.1	10.1	10.1	10.1	10.1	10.1	10.1	10.1	7.9	10.1	10.1	10.1	10.1	9	6.9	6.9	9	10.1
Houston Pilots I - Exxon 3	10.1	10.1	10.1	10.1	10.1	10.1	10.1	10.1	10.1	10.1	10.1	10.1	10.1	10.1	9	10.1	10.1	10.1	10.1	9	6.9	6.9	9	10.1
Houston Pilots H - Morgans Point	10.1	10.1	10.1	10.1	10.1	10.1	10.1	10.1	10.1	10.1	10.1	10.1	10.1	10.1	9	10.1	10.1	10.1	10.1	9	6.9	6.9	9	10.1
Houston Pilots G - 75/76	10.1	10.1	10.1	10.1	10.1	10.1	10.1	10.1	10.1	10.1	10.1	10.1	10.1	10.1	9	10.1	10.1	10.1	10.1	9	6.9	6.9	9	9
Houston Pilots F - 63/64	10.1	10.1	10.1	10.1	10.1	10.1	10.1	10.1	10.1	10.1	6.9	10.1	10.1	10.1	9	10.1	10.1	10.1	10.1	9	6.9	6.9	9	9
Houston Pilots E - 51/52	10.1	10.1	10.1	10.1	10.1	10.1	10.1	10.1	10.1	10.1	6.9	10.1	6.9	6.9	9	10.1	10.1	10.1	10.1	6.9	6.9	6.9	9	9
Houston Pilots D - 37/38	10.1	10.1	10.1	10.1	10.1	10.1	10.1	10.1	10.1	10.1	6.9	10.1	6.9	6.9	9	10.1	10.1	10.1	10.1	6.9	6.9	6.9	9	9
Houston Pilots C - 25/26	10.1	10.1	9	10.1	10.1	10.1	10.1	10.1	10.1	9	10.1	10.1	10.1	6.9	9	10.1	10.1	10.1	10.1	6.9	6.9	6.9	9	9
Houston Pilots B - 11/12	10.1	10.1	10.1	10.1	10.1	10.1	10.1	10.1	10.1	10.1	10.1	10.1	10.1	10.1	10.1	10.1	10.1	10.1	10.1	9	7.9	6.9	8	9
Houston Pilots A - 1 & 2 Bravo	10.1	10.1	10.1	10.1	10.1	10.1	10.1	10.1	10.1	10.1	10.1	8	6.9	9	9	7.9	10.1	10.1	10.1	6.9	6.9	6.9	9	9

NOTE: This is automated data that may/may not agree with the official BAM thinking that's found on the daily slides or special visibility report slides. This data should be used as a guide only

Houston Pilots Wind Chart



Sustained wind 10 Knots
 Gusts 15 Knots
 Wind from the SE

Example
 10
 15
 ↙

Wind	Sat 2 pm	Sat 3 pm	Sat 4 pm	Sat 5 pm	Sat 6 pm	Sat 7 pm	Sat 8 pm	Sat 9 pm	Sat 10 pm	Sat 11 pm	Sun 12 am	Sun 1 am	Sun 2 am	Sun 3 am	Sun 4 am	Sun 5 am	Sun 6 am	Sun 7 am	Sun 8 am	Sun 9 am	Sun 10 am	Sun 11 am	Sun 12 pm	Sun 1 pm
Houston Pilots N - 610 Bridge	8 15 ↙	8 15 ↙	8 15 ↙	8 15 ↙	8 15 ↙	8 14 ↙	7 13 ↙	6 12 ↙	6 10 ↙	5 10 ↙	5 9 ↙	3 9 ↙	3 9 ↙	3 9 ↙	3 9 ↙	5 9 ↙	5 10 ↙	6 10 ↙	6 12 ↙	6 13 ↙	7 13 ↙	7 14 ↙	8 15 ↙	8 16 ↙
Houston Pilots M - Kinder 1	8 15 ↙	8 15 ↙	8 15 ↙	8 15 ↙	8 15 ↙	7 14 ↙	7 13 ↙	6 12 ↙	6 10 ↙	5 10 ↙	5 9 ↙	3 9 ↙	3 9 ↙	3 9 ↙	3 9 ↙	5 9 ↙	5 10 ↙	6 10 ↙	6 12 ↙	6 13 ↙	7 13 ↙	7 14 ↙	8 15 ↙	8 16 ↙
Houston Pilots L - Greens Bayou	8 15 ↙	8 15 ↙	8 15 ↙	8 15 ↙	8 15 ↙	7 14 ↙	6 13 ↙	6 12 ↙	5 10 ↙	5 10 ↙	5 9 ↙	3 9 ↙	3 9 ↙	3 9 ↙	3 9 ↙	5 9 ↙	5 10 ↙	5 10 ↙	6 12 ↙	6 13 ↙	6 13 ↙	7 14 ↙	8 15 ↙	8 15 ↙
Houston Pilots K - Shell Crude	8 15 ↙	8 15 ↙	8 15 ↙	8 15 ↙	7 14 ↙	7 14 ↙	6 13 ↙	6 12 ↙	5 10 ↙	5 10 ↙	5 9 ↙	3 9 ↙	3 9 ↙	3 9 ↙	3 9 ↙	5 9 ↙	5 10 ↙	5 10 ↙	6 12 ↙	6 13 ↙	6 13 ↙	7 14 ↙	8 15 ↙	8 15 ↙
Houston Pilots J - Lynchburg Ferries	7 15 ↙	8 14 ↙	8 15 ↙	8 14 ↙	7 14 ↙	7 14 ↙	6 13 ↙	6 12 ↙	5 10 ↙	3 9 ↙	3 9 ↙	3 9 ↙	3 8 ↙	3 9 ↙	3 9 ↙	3 9 ↙	5 10 ↙	5 10 ↙	6 12 ↙	6 13 ↙	6 13 ↙	7 14 ↙	7 15 ↙	8 15 ↙
Houston Pilots I - Exxon 3	10 16 ↙	10 16 ↙	10 16 ↙	10 16 ↙	10 16 ↙	10 15 ↙	9 14 ↙	8 13 ↙	8 13 ↙	8 13 ↙	8 13 ↙	8 12 ↙	8 12 ↙	8 12 ↙	8 12 ↙	8 13 ↙	8 13 ↙	9 14 ↙	10 14 ↙	9 15 ↙	9 15 ↙	10 15 ↙	9 15 ↙	10 16 ↙
Houston Pilots H - Morgans Point	10 16 ↙	10 16 ↙	10 16 ↙	10 16 ↙	10 15 ↙	10 15 ↙	9 14 ↙	8 13 ↙	8 13 ↙	8 13 ↙	8 13 ↙	8 12 ↙	8 12 ↙	8 12 ↙	8 12 ↙	8 13 ↙	8 13 ↙	9 13 ↙	9 14 ↙	9 14 ↙	9 15 ↙	10 15 ↙	9 15 ↙	10 16 ↙
Houston Pilots G - 75/76	10 16 ↙	10 16 ↙	10 16 ↙	10 16 ↙	10 16 ↙	10 16 ↙	10 15 ↙	10 14 ↙	10 14 ↙	10 14 ↙	9 14 ↙	9 13 ↙	9 13 ↙	9 13 ↙	9 13 ↙	9 14 ↙	9 14 ↙	10 15 ↙	10 15 ↙	10 15 ↙	10 15 ↙	10 17 ↙	10 16 ↙	10 17 ↙
Houston Pilots F - 63/64	9 16 ↙	9 16 ↙	9 16 ↙	10 15 ↙	10 16 ↙	10 15 ↙	10 15 ↙	10 14 ↙	10 14 ↙	10 14 ↙	9 14 ↙	9 13 ↙	9 13 ↙	8 13 ↙	9 13 ↙	9 13 ↙	9 14 ↙	10 15 ↙	10 15 ↙	10 15 ↙	10 15 ↙	10 17 ↙	10 17 ↙	10 17 ↙
Houston Pilots E - 51/52	9 15 ↙	9 15 ↙	9 15 ↙	9 15 ↙	10 15 ↙	10 15 ↙	10 15 ↙	9 14 ↙	9 14 ↙	9 14 ↙	9 14 ↙	8 13 ↙	8 12 ↙	8 12 ↙	8 12 ↙	8 13 ↙	8 13 ↙	9 14 ↙	10 15 ↙	10 15 ↙	10 15 ↙	10 17 ↙	10 16 ↙	10 16 ↙
Houston Pilots D - 37/38	8 15 ↙	8 14 ↙	8 15 ↙	9 15 ↙	9 15 ↙	9 15 ↙	9 15 ↙	9 14 ↙	9 14 ↙	9 14 ↙	8 13 ↙	8 13 ↙	8 12 ↙	8 12 ↙	8 12 ↙	8 12 ↙	8 12 ↙	8 13 ↙	9 14 ↙	10 15 ↙	10 15 ↙	10 16 ↙	10 16 ↙	10 16 ↙
Houston Pilots C - 25/26	8 14 ↙	8 14 ↙	8 14 ↙	8 14 ↙	9 14 ↙	9 14 ↙	9 14 ↙	8 14 ↙	8 13 ↙	8 13 ↙	8 13 ↙	8 12 ↙	8 12 ↙	8 12 ↙	7 12 ↙	8 12 ↙	8 12 ↙	8 13 ↙	8 14 ↙	9 14 ↙	10 15 ↙	10 16 ↙	10 16 ↙	10 16 ↙
Houston Pilots B - 11/12	8 14 ↙	8 14 ↙	8 14 ↙	8 14 ↙	8 14 ↙	8 14 ↙	8 14 ↙	8 13 ↙	8 13 ↙	7 13 ↙	7 12 ↙	6 12 ↙	6 10 ↙	6 10 ↙	6 10 ↙	6 10 ↙	6 12 ↙	7 12 ↙	8 13 ↙	8 14 ↙	8 14 ↙	9 15 ↙	9 16 ↙	10 16 ↙
Houston Pilots A - 1 & 2 Bravo	8 14 ↙	8 14 ↙	8 14 ↙	9 14 ↙	9 15 ↙	9 15 ↙	9 15 ↙	9 14 ↙	9 14 ↙	9 14 ↙	8 13 ↙	8 13 ↙	8 12 ↙	8 12 ↙	8 12 ↙	8 12 ↙	8 12 ↙	8 13 ↙	8 14 ↙	9 14 ↙	10 15 ↙	10 16 ↙	10 16 ↙	10 16 ↙

NOTE: This is automated data that may/may not agree with the official BAM thinking that's found on the daily slides. This data should be used as a guide only.

Houston Pilots: SAT. 8/31/2024



Forecast Discussion

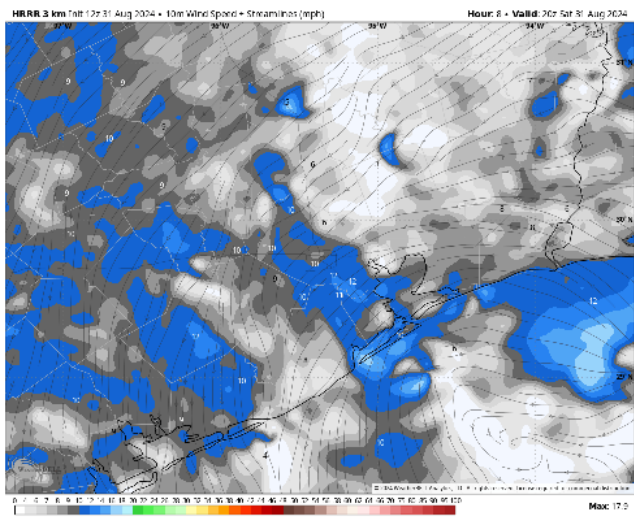
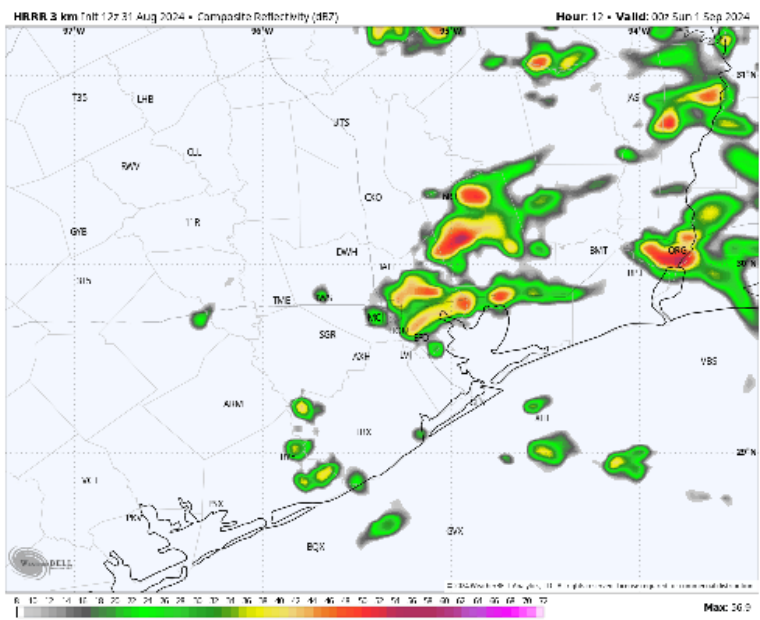
Precip: Hit/miss (20-30%) chances of downpours / storms will continue through 9PM for all stations. After 9PM favoring scattered showers/downpours for stations south of Morgan's Point to continue throughout the rest of the night. **Wind gusts of 25-35 kts will be possible with storms!**

Wind: Winds will be out of the NE throughout the rest of the day. **N of Morgan's Point:** Winds will be sustained 6 – 12 kts throughout the day. **S of Morgan's Point:** Winds will be sustained at 9 – 14 kts, **with wind gusts of 20 kts throughout the day being possible.**

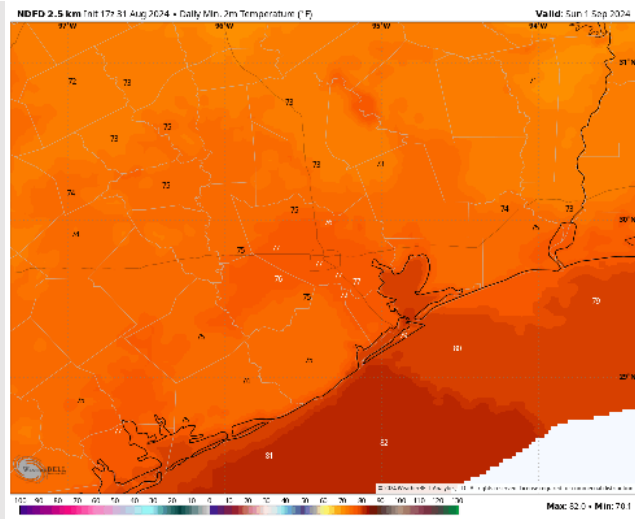
Low Temps: **N of Morgan's Point:** Mid/Upper 70s F. **S of Morgan's Point:** Upper 70s F.

Visibility: Not anticipating any fog concerns the rest of today, however, visibilities can be reduced in heavy downpours.

Precip Image: 7 PM CT



Wind Speed:
3 PM CT



Low Temps
SUN AM

Houston Pilots: SUN. 9/1/2024



Forecast Discussion

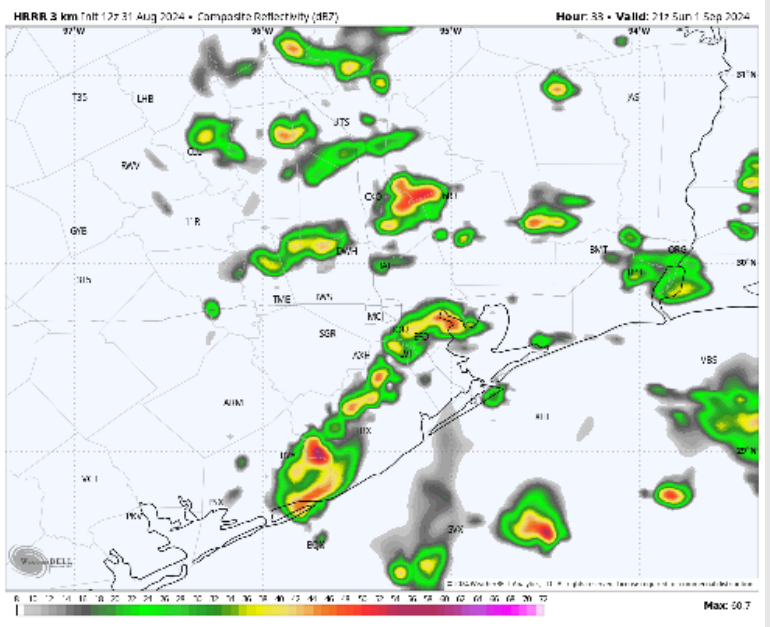
Precip: Scattered (30-40%) showers / storm chances will continue through 12PM for stations S of Morgan's Point. Then favoring scattered chances to work back in starting after 12 PM for all stations and continue throughout the rest of the day Sunday.

Wind: Winds will be generally out of the E/NE throughout the day on Sunday. **N of Morgan's Point:** Winds at 5 – 10 kts throughout the day. **S of Morgan's Point:** Winds will be sustained at 9 – 14 kts through 10 AM before increasing to 12-17 kts the rest of the day. **Non-thunderstorm wind gusts of 20-25 kts can be possible!**

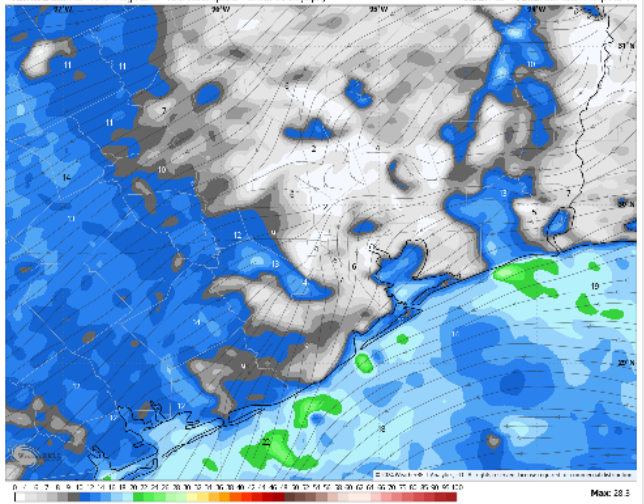
High Temps: **N of Morgan's Point:** Mid/Upper 80's F. **S of Morgan's Point:** Mid 80s F.

Visibility: Not anticipating any fog concerns Sunday, however, reduced visibilities will be possible in heavy downpours.

Precip Image: 4 PM CT

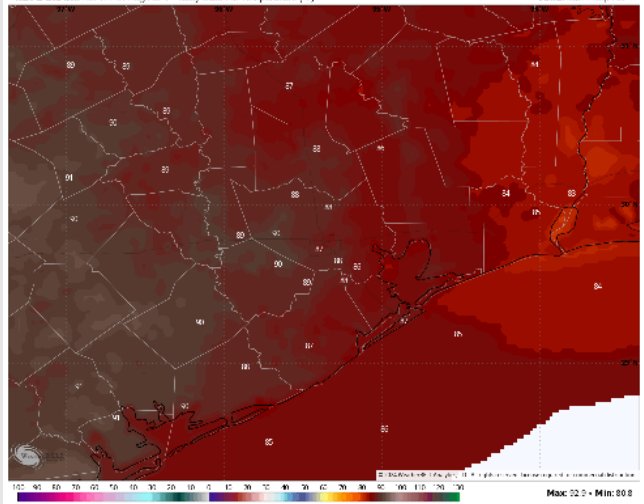


HRRR 3 km 17r 31 Aug 2024 • 10m Wind Speed - Streamlines (mph) Hour: 86 • Valid: 00 Mon 2 Sep 2024



Wind Speed
7 PM CT

NDFD 2.5 km 17r 31 Aug 2024 • Daily Max, 2m Temperature (°F) Valid: Sun 1 Sep 2024



High Temps
Sunday

Houston Pilots: MON. 9/2/2024



Forecast Discussion

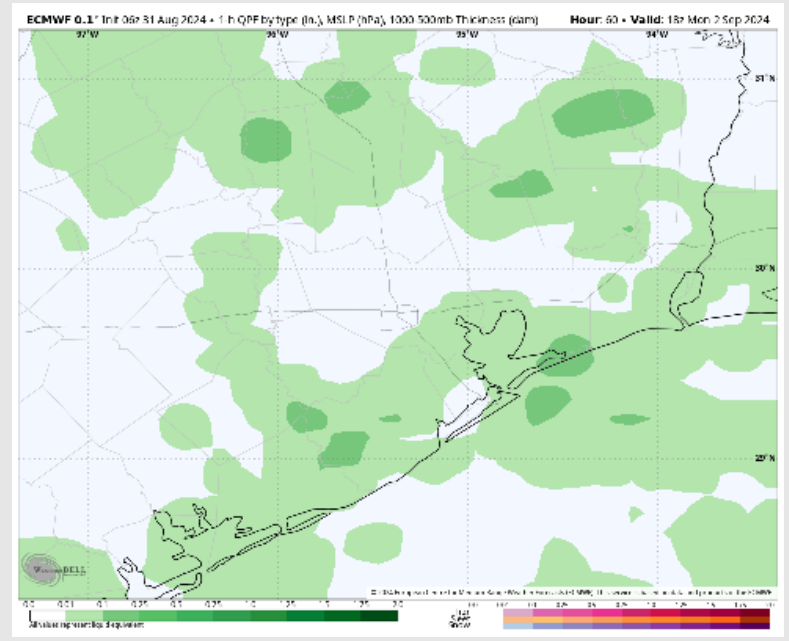
Precip: Scattered to widespread moderate/heavy rainfall will be possible through 8 PM Monday before chances begin to taper off gradually throughout the rest of the evening on Monday.

Wind: Winds will out of the SE/E throughout the day Monday. **N of Morgan's Point:** Winds will be at 5 – 10 kts throughout the day. **S of Morgan's Point:** Winds will be 8 – 13 kts throughout the day on Monday. **Gusts of up to 20 kts possible through 8 PM MON.**

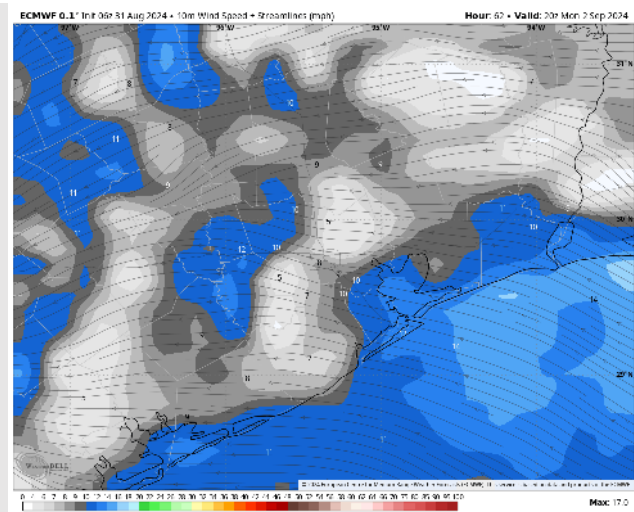
High Temps: **N of Morgan's Point:** Mid 80s F. **S of Morgan's Point:** Mid 80s F.

Visibility: Not favoring any fog concerns Monday, however, heavy downpours will reduce visibilities.

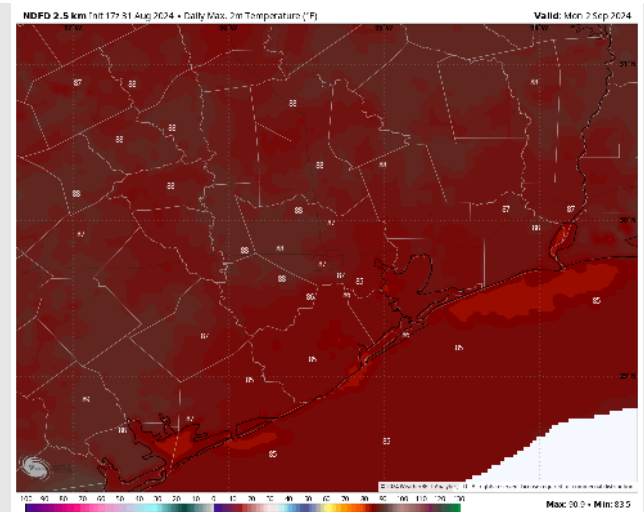
Precip Image: 1 PM CT



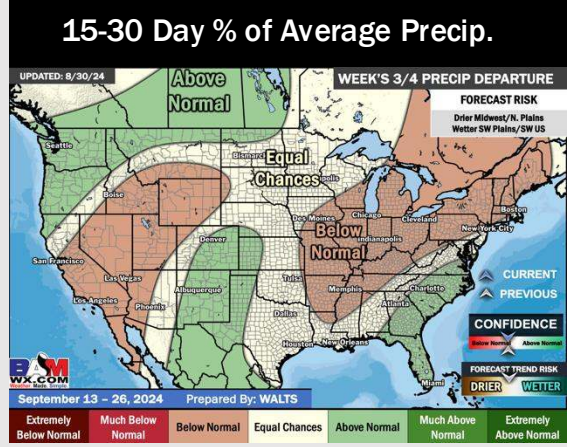
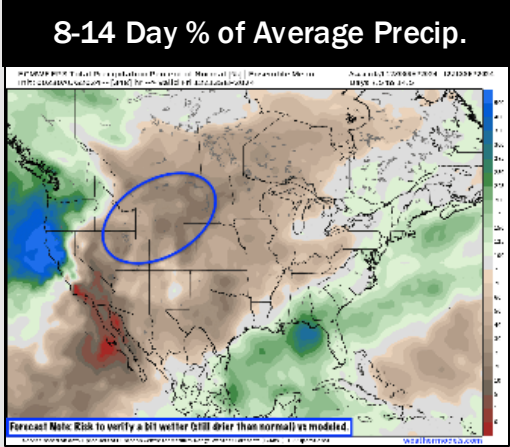
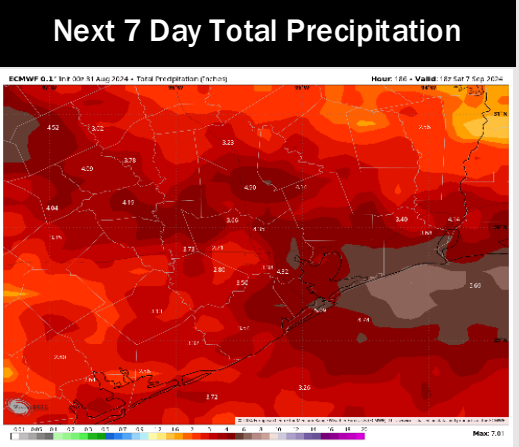
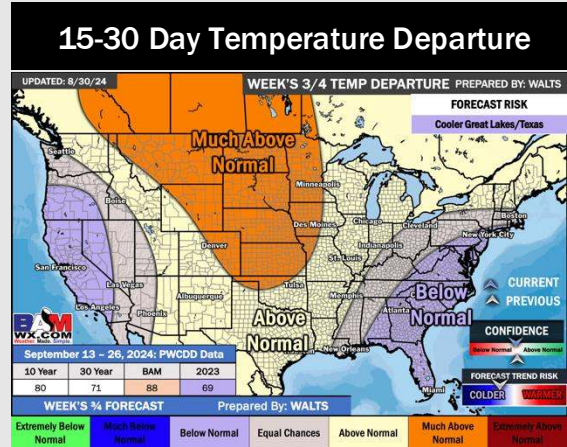
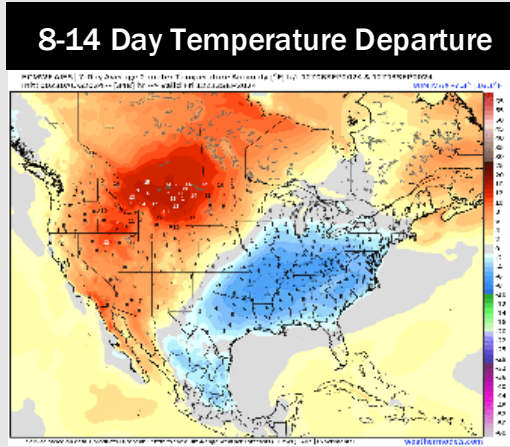
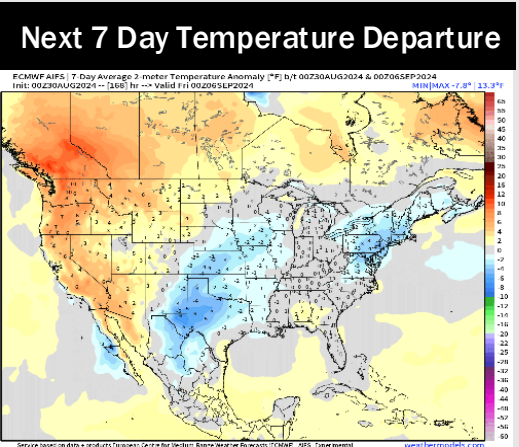
Wind Speed:
3 PM CT



High Temps
Monday



Houston Pilots: 8/31/24



- Temps are expected to be seasonable for the week 1 timeframe. Scattered to widespread rain chances are expected daily through the next week.
- Below normal temperatures are favored into week 2 with seasonable average rain chances. Tropical activity threats for Week 2 and beyond will continue to be monitored
- Above normal temperatures and seasonable precipitation chances are expected for the weeks 3/4 timeframe.