

Houston Pilots Forecast Package



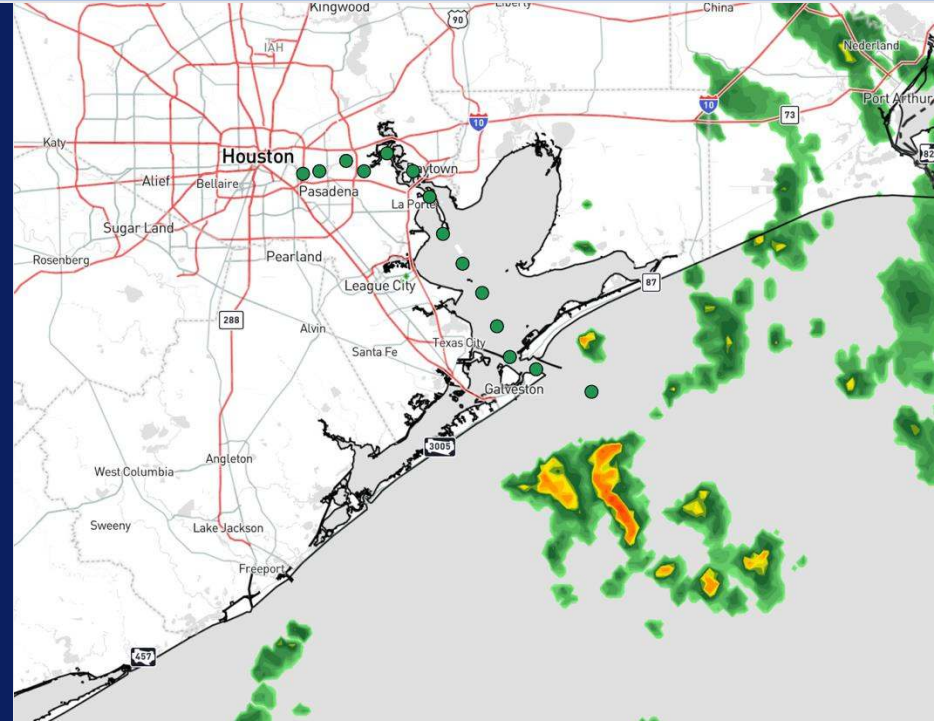
Updated: 10:00 PM CT

Saturday, August 31, 2024

Forecaster: Xander Lowry

Weather Headlines

- Frequent periods of downpours / storms favored through the holiday weekend, with **~25 – 35 kt gusts in play.**
- Monitoring a tropical wave as it works towards the Caribbean. Check tropical slides for more info.
- Not favoring any fog risks over the next few days.



Current Radar: 9:45 PM CT



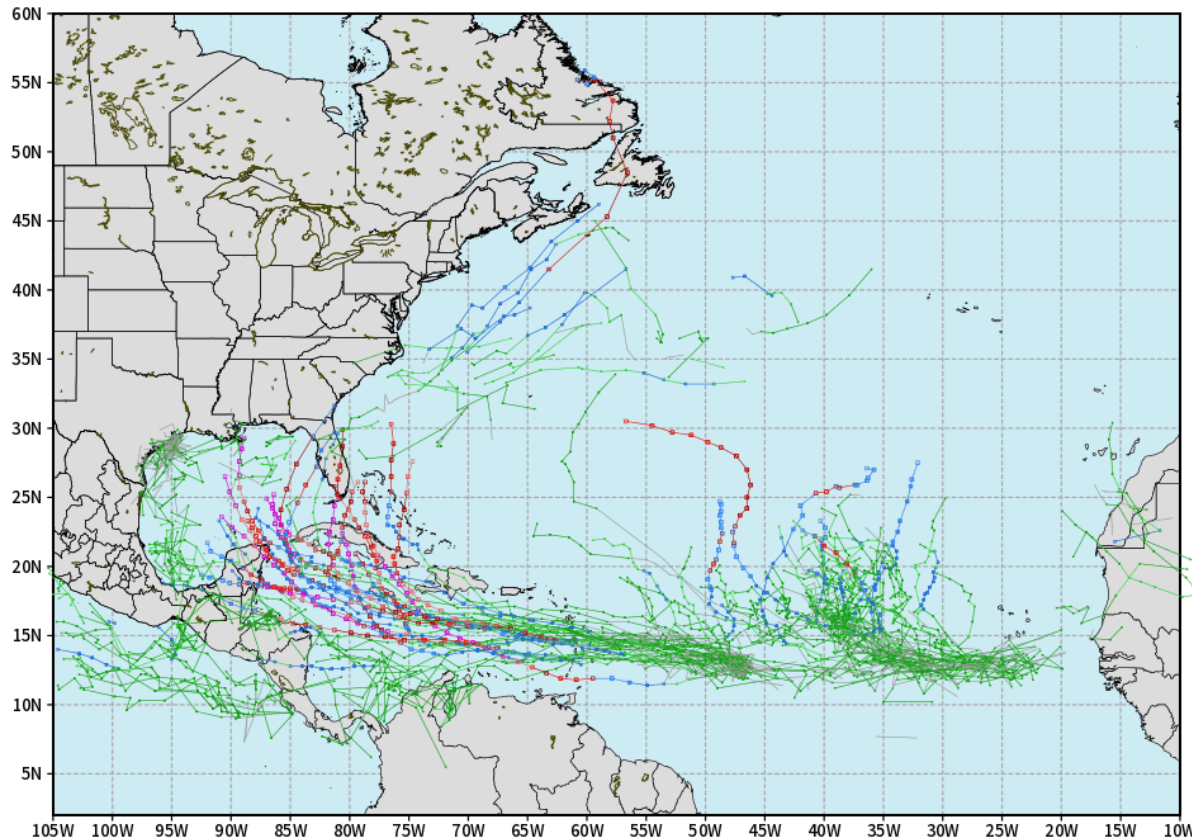
As always, please do not hesitate to reach out to us with any forecast questions via the chat option on Clarity or our on-call number, **(317)-560-8122** press 1 for forecast questions.

Houston Pilots Tropical Update

European Model Next 10 Days - Tropical Tracks

ECMWF ATLANTIC EPS Cyclone Locations --> Next [10-days]
INIT: 12Z30AUG2024 --> UNTIL 12Z09SEP2024

o-o ENSEMBLE MEAN
o-o 1000 - 1010 hPa
o-o 980 - 999 hPa
o-o 960 - 979 hPa
o-o 950 - 959 hPa
o-o < 950 hPa



weathermodels.com

Monitoring a broad area of low pressure off the SE TX Coast as it works slowly northward. Further development remains unlikely.

Favoring a Tropical System to continue to work into the E Caribbean started the start of next week and development continues to look likely towards the middle of next week. A close eye will need to continue to be on this system for possible impacts in the Gulf.

Houston Pilots Tropical Update

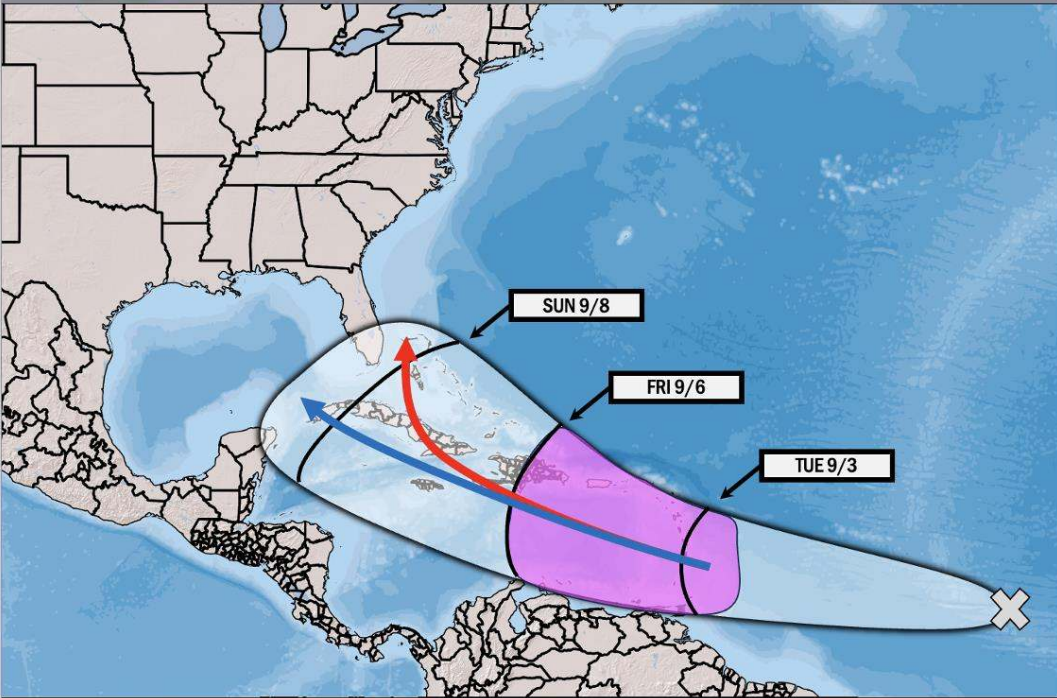


Potential Francine?

TROPICAL INSIGHT

10:40 PM ET Thursday August 29, 2024

Forecaster: Lowry



TIMING: August 29th – September 8th

FORECAST NOTES:

- ✓ Tracking general progression of tropical wave above!
- ✓ Area in purple is area where formation chances are highest!
- ✓ Red Arrow: Faster formation and quicker recurve solution
- ✓ Blue Arrow: Slower formation and progression into Gulf



Houston Pilots Visibility Chart (miles)



Forecast Confidence



Visibility	Fri 11 pm	Sat 12 am	Sat 1 am	Sat 2 am	Sat 3 am	Sat 4 am	Sat 5 am	Sat 6 am	Sat 7 am	Sat 8 am	Sat 9 am	Sat 10 am	Sat 11 am	Sat 12 pm	Sat 1 pm	Sat 2 pm	Sat 3 pm	Sat 4 pm	Sat 5 pm	Sat 6 pm	Sat 7 pm	Sat 8 pm	Sat 9 pm	Sat 10 pm	
Houston Pilots N - 610 Bridge	10.1	10.1	10.1	10.1	10.1	10.1	9	10.1	10.1	6.9	6.9	5.9	6.9	7.9	7.9	10.1	10.1	10.1	9	10.1	10.1	10.1	10.1	10.1	
Houston Pilots M - Kinder 1	10.1	10.1	10.1	10.1	10.1	10.1	9	10.1	10.1	6.9	6.9	5.9	6.9	6.9	7.9	10.1	10.1	10.1	9	10.1	10.1	10.1	10.1	10.1	
Houston Pilots L - Greens Bayou	10.1	10.1	10.1	10.1	10.1	10.1	9	10.1	9	6.9	6.9	5.9	6.9	6.9	7.9	9	9	9	7.9	10.1	10.1	10.1	10.1	10.1	
Houston Pilots K - Shell Crude	10.1	10.1	10.1	10.1	10.1	10.1	10.1	10.1	9	6.9	6.9	5.9	6.9	6.9	6.9	9	7.9	9	6.9	9	10.1	10.1	10.1	10.1	
Houston Pilots J - Lynchburg Ferries	10.1	10.1	10.1	10.1	10.1	10.1	9	10.1	9	6.9	6.9	5.9	5.9	6.9	7.9	9	7.9	9	7.9	10.1	10.1	10.1	10.1	10.1	
Houston Pilots I - Exxon 3	10.1	10.1	10.1	10.1	9	10.1	10.1	10.1	9	6.9	6.9	5.9	5.9	6.9	6.9	6.9	7.9	7.9	6.9	9	10.1	10.1	10.1	10.1	
Houston Pilots H - Morgans Point	10.1	10.1	10.1	10.1	9	10.1	10.1	10.1	9	6.9	6.9	5.9	5.9	6.9	6.9	6.9	7.9	7.9	6.9	9	10.1	10.1	10.1	10.1	
Houston Pilots G - 75/76	10.1	10.1	10.1	10.1	6.9	10.1	10.1	10.1	10.1	10.1	6.9	6.9	5.9	6.9	6.9	6.9	6.9	6.9	6.9	6.9	7.9	10.1	10.1	9	9
Houston Pilots F - 63/64	10.1	10.1	10.1	10.1	6.9	10.1	10.1	10.1	10.1	10.1	6.9	6.9	5.9	5.9	6.9	6.9	6.9	6.9	6.9	6.9	7.9	10.1	10.1	9	9
Houston Pilots E - 51/52	10.1	10.1	10.1	10.1	10.1	10.1	10.1	10.1	10.1	10.1	6.9	6.9	5.9	5.9	6.9	6.9	6.9	6.9	6.9	6.9	6.9	10.1	10.1	9	9
Houston Pilots D - 37/38	10.1	10.1	10.1	10.1	10.1	10.1	10.1	10.1	10.1	10.1	6.9	6.9	5.9	5.9	5.9	6.9	6.9	6.9	6.9	6.9	6.9	10.1	10.1	9	9
Houston Pilots C - 25/26	10.1	10.1	10.1	10.1	10.1	10.1	10.1	10.1	10.1	10.1	6.9	6.9	5.9	5.9	5.9	5.9	6.9	5.9	6.9	6.9	6.9	10.1	10.1	9	9
Houston Pilots B - 11/12	10.1	10.1	10.1	10.1	10.1	7.9	10.1	10.1	10.1	10.1	7.9	6.9	5.9	5.9	5.9	5.9	6.9	5.9	6.9	6.9	6.9	10.1	10.1	9	9
Houston Pilots A - 1 & 2 Bravo	10.1	10.1	10.1	10.1	10.1	7.9	10.1	10.1	10.1	10.1	7.9	6.9	6.9	6.9	6.9	6.9	6.9	5.9	6.9	6.9	6.9	7.9	10.1	9	9

NOTE: This is automated data that may/may not agree with the official BAM thinking that's found on the daily slides or special visibility report slides. This data should be used as a guide only

Houston Pilots Wind Chart



Forecast Confidence

Above Normal Below Normal

Sustained wind 10 Knots

Gusts 15 Knots

Wind from the SE

Example

10

15

↙

Wind	Fri 11 pm	Sat 12 am	Sat 1 am	Sat 2 am	Sat 3 am	Sat 4 am	Sat 5 am	Sat 6 am	Sat 7 am	Sat 8 am	Sat 9 am	Sat 10 am	Sat 11 am	Sat 12 pm	Sat 1 pm	Sat 2 pm	Sat 3 pm	Sat 4 pm	Sat 5 pm	Sat 6 pm	Sat 7 pm	Sat 8 pm	Sat 9 pm	Sat 10 pm
Houston Pilots N - 610 Bridge	5 10 ↙	5 9 ↙	3 9 ↙	3 8 ↙	3 8 ↙	3 8 ↙	3 9 ↙	5 9 ↙	5 10 ↙	6 10 ↙	6 12 ↙	6 12 ↙	6 13 ↙	6 13 ↙	7 14 ↙	7 15 ↙	7 14 ↙	7 14 ↙	7 14 ↙	6 13 ↙	6 13 ↙	6 10 ↙	5 9 ↙	3 8 ↙
Houston Pilots M - Kinder 1	5 10 ↙	5 9 ↙	3 9 ↙	3 8 ↙	3 8 ↙	3 8 ↙	3 9 ↙	5 9 ↙	5 10 ↙	6 10 ↙	6 12 ↙	6 12 ↙	6 13 ↙	6 13 ↙	7 14 ↙	7 15 ↙	7 14 ↙	7 14 ↙	7 13 ↙	6 13 ↙	6 13 ↙	6 10 ↙	5 9 ↙	3 8 ↙
Houston Pilots L - Greens Bayou	5 10 ↙	3 9 ↙	3 8 ↙	3 8 ↙	3 8 ↙	3 8 ↙	3 9 ↙	3 9 ↙	5 10 ↙	6 10 ↙	6 12 ↙	6 12 ↙	6 13 ↙	6 13 ↙	7 13 ↙	7 15 ↙	7 14 ↙	7 14 ↙	7 13 ↙	6 13 ↙	6 12 ↙	6 10 ↙	5 9 ↙	3 8 ↙
Houston Pilots K - Shell Crude	5 10 ↙	3 9 ↙	3 8 ↙	3 8 ↙	3 8 ↙	3 8 ↙	3 9 ↙	3 9 ↙	5 10 ↙	6 10 ↙	6 12 ↙	6 12 ↙	6 13 ↙	6 13 ↙	7 14 ↙	7 14 ↙	7 14 ↙	7 14 ↙	7 13 ↙	6 13 ↙	6 12 ↙	6 10 ↙	5 9 ↙	3 8 ↙
Houston Pilots J - Lynchburg Ferries	3 10 ↙	3 9 ↙	3 8 ↙	3 8 ↙	3 8 ↙	3 8 ↙	3 8 ↙	3 9 ↙	5 10 ↙	5 10 ↙	6 12 ↙	6 12 ↙	6 13 ↙	6 13 ↙	6 13 ↙	7 14 ↙	7 13 ↙	7 13 ↙	7 13 ↙	6 13 ↙	6 12 ↙	6 10 ↙	5 9 ↙	3 8 ↙
Houston Pilots I - Exxon 3	8 13 ↙	8 12 ↙	8 12 ↙	7 10 ↙	7 10 ↙	7 10 ↙	8 12 ↙	8 12 ↙	8 13 ↙	9 13 ↙	8 13 ↙	8 14 ↙	8 14 ↙	8 14 ↙	8 14 ↙	9 15 ↙	9 15 ↙	9 15 ↙	9 15 ↙	9 14 ↙	8 14 ↙	8 12 ↙	8 10 ↙	7 10 ↙
Houston Pilots H - Morgans Point	8 13 ↙	8 12 ↙	7 10 ↙	7 10 ↙	7 10 ↙	7 10 ↙	7 10 ↙	8 12 ↙	8 12 ↙	8 13 ↙	8 13 ↙	8 14 ↙	8 14 ↙	8 14 ↙	8 14 ↙	9 15 ↙	9 15 ↙	9 15 ↙	9 14 ↙	8 14 ↙	8 13 ↙	8 12 ↙	8 10 ↙	7 10 ↙
Houston Pilots G - 75/76	9 14 ↙	8 13 ↙	8 12 ↙	8 12 ↙	8 12 ↙	8 12 ↙	8 12 ↙	8 13 ↙	9 14 ↙	10 14 ↙	9 15 ↙	9 15 ↙	9 15 ↙	8 15 ↙	8 14 ↙	9 15 ↙	9 15 ↙	9 15 ↙	8 14 ↙	8 14 ↙	8 14 ↙	8 13 ↙	8 12 ↙	8 12 ↙
Houston Pilots F - 63/64	9 14 ↙	8 13 ↙	8 12 ↙	8 12 ↙	8 12 ↙	8 12 ↙	8 12 ↙	8 13 ↙	9 13 ↙	9 14 ↙	9 15 ↙	9 15 ↙	9 15 ↙	8 15 ↙	8 14 ↙	8 15 ↙	8 14 ↙	8 14 ↙	8 14 ↙	8 14 ↙	8 13 ↙	8 13 ↙	8 12 ↙	8 12 ↙
Houston Pilots E - 51/52	9 14 ↙	8 13 ↙	8 12 ↙	8 10 ↙	7 10 ↙	7 10 ↙	8 12 ↙	8 12 ↙	8 13 ↙	9 14 ↙	9 14 ↙	9 15 ↙	9 15 ↙	9 14 ↙	8 14 ↙	8 15 ↙	8 14 ↙	8 13 ↙	8 13 ↙	8 13 ↙	8 13 ↙	8 12 ↙	8 10 ↙	7 10 ↙
Houston Pilots D - 37/38	9 13 ↙	8 13 ↙	8 12 ↙	7 10 ↙	7 10 ↙	7 10 ↙	8 10 ↙	8 12 ↙	8 12 ↙	8 13 ↙	8 14 ↙	9 14 ↙	9 15 ↙	8 14 ↙	8 14 ↙	8 14 ↙	8 13 ↙	8 13 ↙	8 13 ↙	8 13 ↙	8 13 ↙	8 12 ↙	8 10 ↙	7 10 ↙
Houston Pilots C - 25/26	8 13 ↙	8 12 ↙	7 10 ↙	7 10 ↙	7 10 ↙	7 10 ↙	7 12 ↙	7 12 ↙	8 12 ↙	8 13 ↙	8 13 ↙	8 14 ↙	9 14 ↙	8 13 ↙	8 13 ↙	8 14 ↙	8 13 ↙	8 13 ↙	8 13 ↙	8 13 ↙	8 12 ↙	8 12 ↙	8 10 ↙	7 10 ↙
Houston Pilots B - 11/12	7 13 ↙	7 12 ↙	6 10 ↙	6 10 ↙	6 10 ↙	6 10 ↙	6 10 ↙	6 10 ↙	6 12 ↙	7 12 ↙	8 13 ↙	8 14 ↙	8 14 ↙	8 14 ↙	8 13 ↙	8 14 ↙	8 13 ↙	8 13 ↙	8 13 ↙	8 13 ↙	7 12 ↙	7 12 ↙	7 10 ↙	6 10 ↙
Houston Pilots A - 1 & 2 Bravo	9 14 ↙	8 13 ↙	8 13 ↙	8 12 ↙	8 12 ↙	8 12 ↙	8 12 ↙	8 12 ↙	8 13 ↙	8 13 ↙	8 14 ↙	9 14 ↙	9 15 ↙	8 14 ↙	8 14 ↙	8 14 ↙	8 13 ↙	8 13 ↙	8 13 ↙	8 13 ↙	8 13 ↙	8 13 ↙	8 12 ↙	8 12 ↙

NOTE: This is automated data that may/may not agree with the official BAM thinking that's found on the daily slides. This data should be used as a guide only.

Houston Pilots: SAT. 8/31/2024



Forecast Discussion

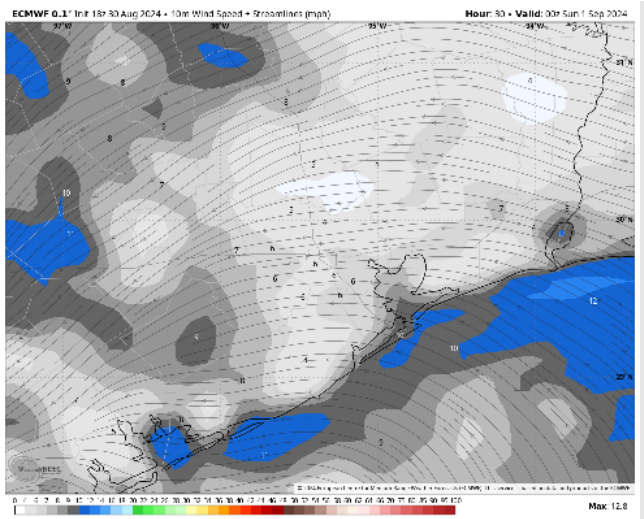
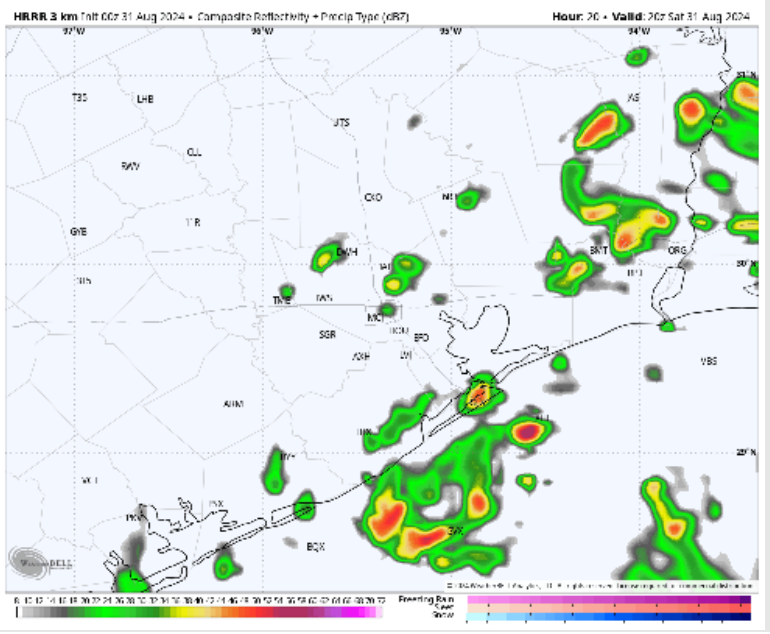
Precip: Scattered (40%) chances of downpours / storms will be possible from 12AM through 8PM for all stations. After 8PM favoring scattered showers/downpours for the boarding station to continue throughout the rest of the night. **Wind gusts of 25-35 kts will be possible with storms!**

Wind: Winds will be out of the N through 12PM before shifting to out of the NE through the rest of the day. **N of Morgan's Point:** Winds will be sustained 6 – 12 kts throughout the day. **S of Morgan's Point:** Winds will be sustained at 10 – 15 , **with wind gusts of 20 kts throughout the day being possible.**

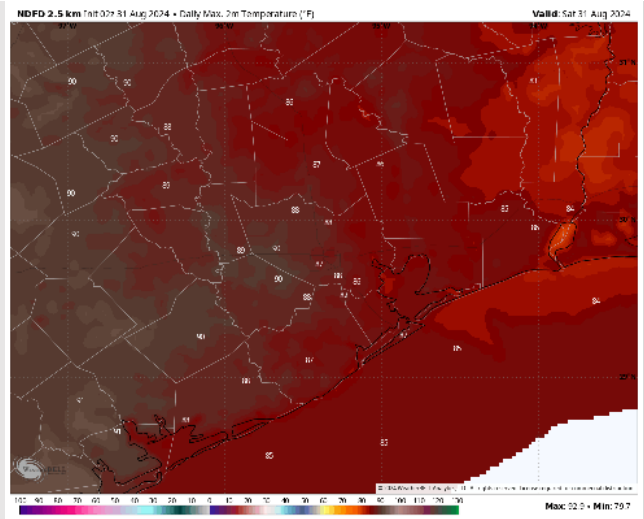
High Temps: **N of Morgan's Point:** Upper 80s F. **S of Morgan's Point:** Mid 80s F.

Visibility: Not anticipating any fog concerns today, however, visibilities can be reduced in heavy downpours.

Precip Image: 3 PM CT



Wind Speed:
7 PM CT



High Temps
Today

Houston Pilots: SUN. 9/1/2024



Forecast Discussion

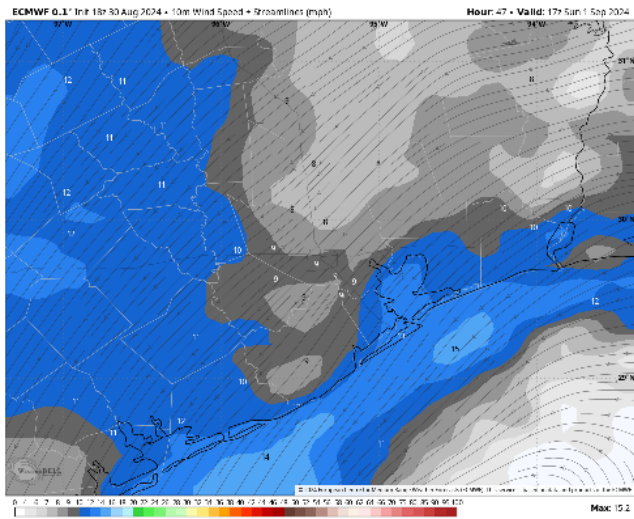
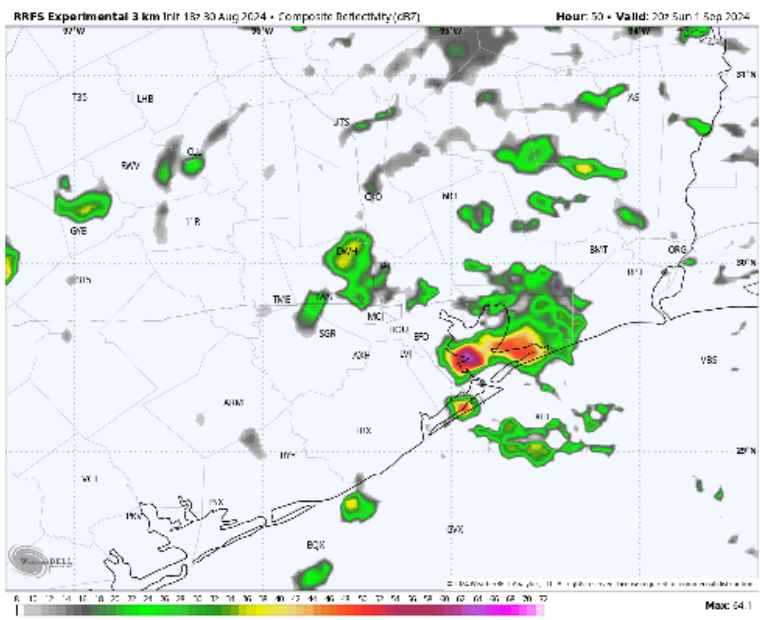
Precip: Scattered (30-40%) showers / storm chances will continue through 12PM for stations S of Morgan's. Then favoring scattered chances to work back in starting at 3PM for all stations and continue throughout the rest of the evening.

Wind: Winds will be generally out of the E/NE throughout the day on Sunday. **N of Morgan's Point:** Winds at 5 – 10 kts throughout the day. **S of Morgan's Point:** Winds will be sustained at 9 – 14 kts throughout the day. **Non-thunderstorm wind gusts of 20-25 kts can be possible!**

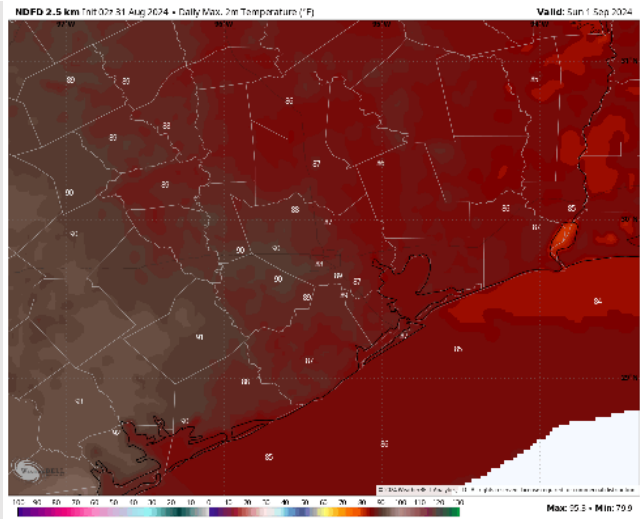
High Temps: **N of Morgan's Point:** Mid to upper 80's. **S of Morgan's Point:** Mid 80s F.

Visibility: Not anticipating any fog concerns Sunday, however, reduced visibilities will be possible in heavy downpours.

Precip Image: 7 AM CT



Wind Speed
12 PM CT



High Temps
Sunday

Houston Pilots: MON. 9/2/2024



Forecast Discussion

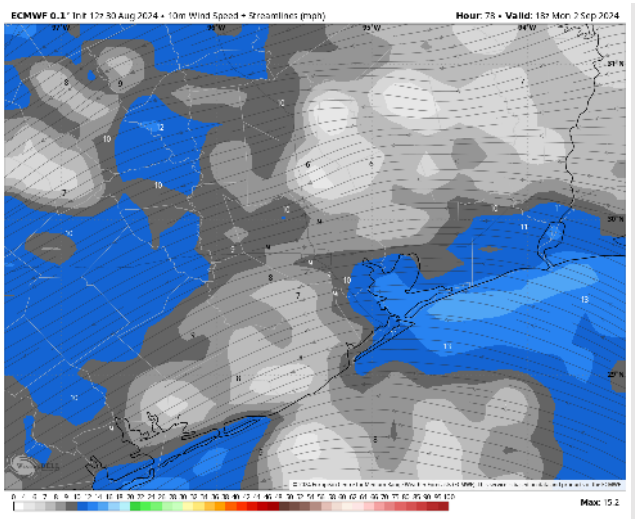
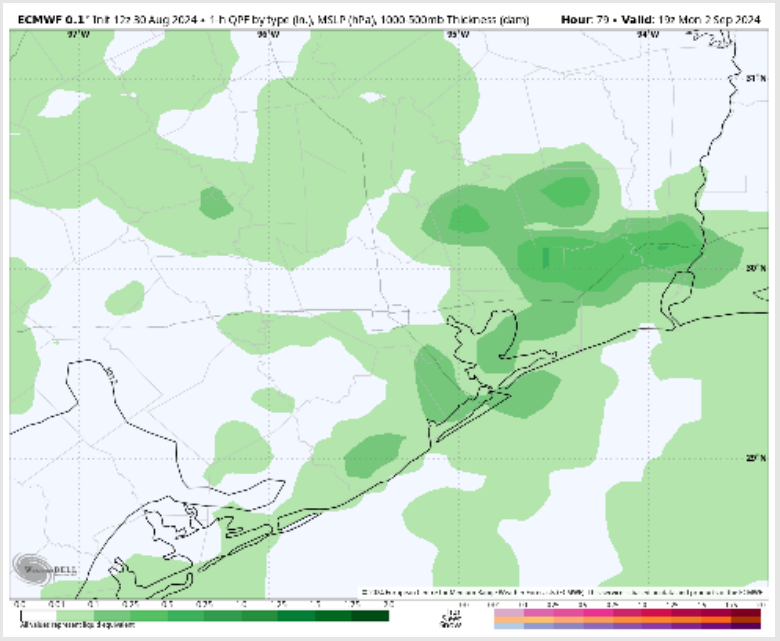
Precip: Widespread moderate/heavy rainfall will be possible through 7PM Monday before chances are able to work out of the area. Would favor dry conditions after 7PM and for the rest of the evening Monday.

Wind: Winds will out of the SE/E throughout the day Monday. **N of Morgan's Point:** Winds will be at 5 – 10 kts throughout the day. **S of Morgan's Point:** Winds will be 8 – 13 kts throughout the day on Monday.

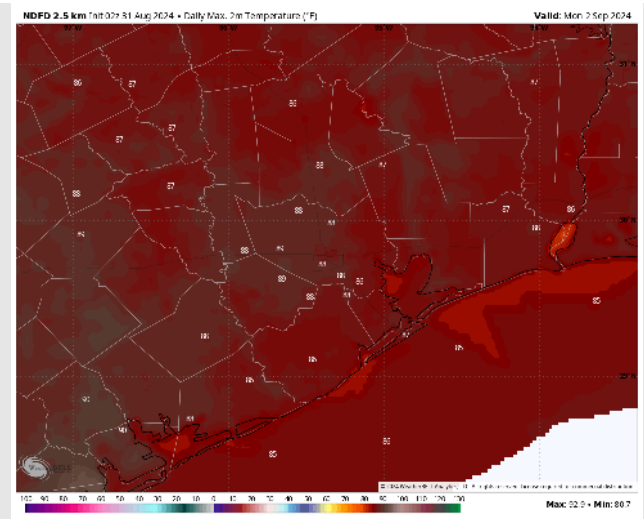
High Temps: **N of Morgan's Point:** Upper 80s. **S of Morgan's Point:** Mid 80s F.

Visibility: Not favoring any fog concerns today, however, heavy downpours will reduce visibilities.

Precip Image: 2 PM CT



Wind Speed:
1 PM CT

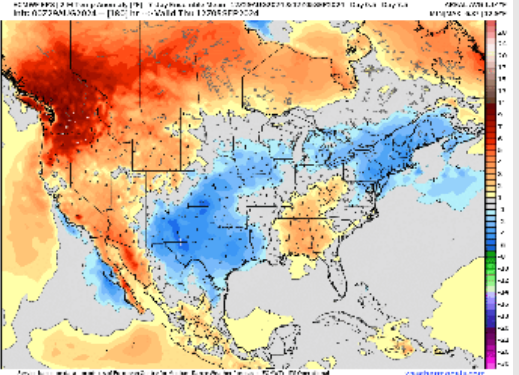


High Temps
Monday

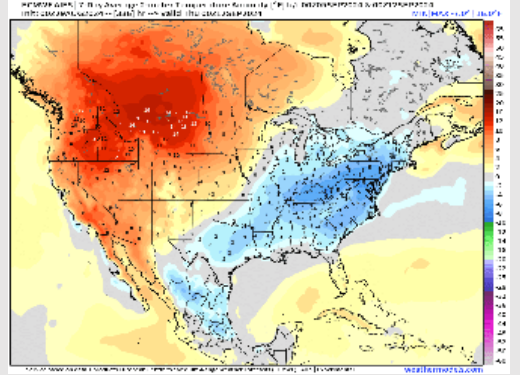
Houston Pilots: 8/31/24



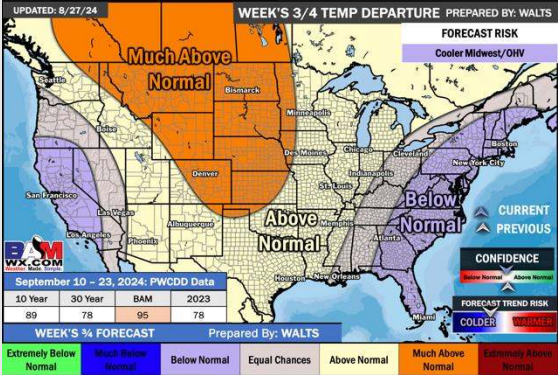
Next 7 Day Temperature Departure



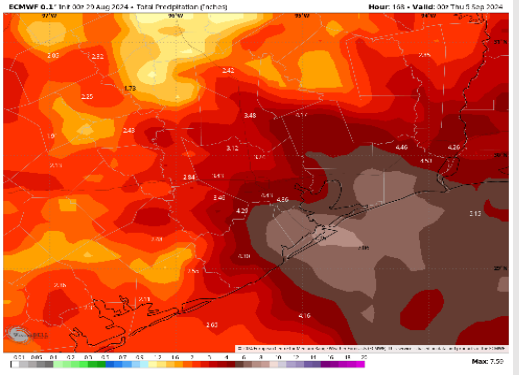
8-14 Day Temperature Departure



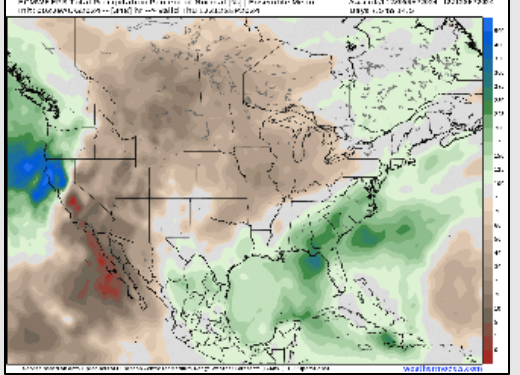
15-30 Day Temperature Departure



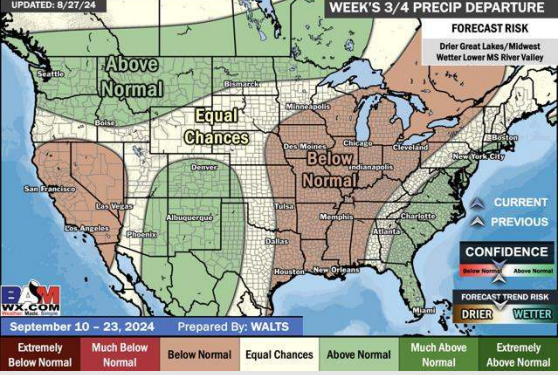
Next 7 Day Total Precipitation



8-14 Day % of Average Precip.



15-30 Day % of Average Precip.



- Temps are expected to be below normal for the week 1 timeframe. Scattered rain chances are expected daily through the next week.
- Slightly below normal temperatures are favored into week 2 with above average rain chances.
- Above normal temperatures and below average precipitation chances are expected for the weeks 3/4 timeframe. As we approach the beginning of September, Atlantic tropical activity looks to ramp up. We will be monitoring closely and providing updates as needed.