

# Houston Pilots Forecast Package



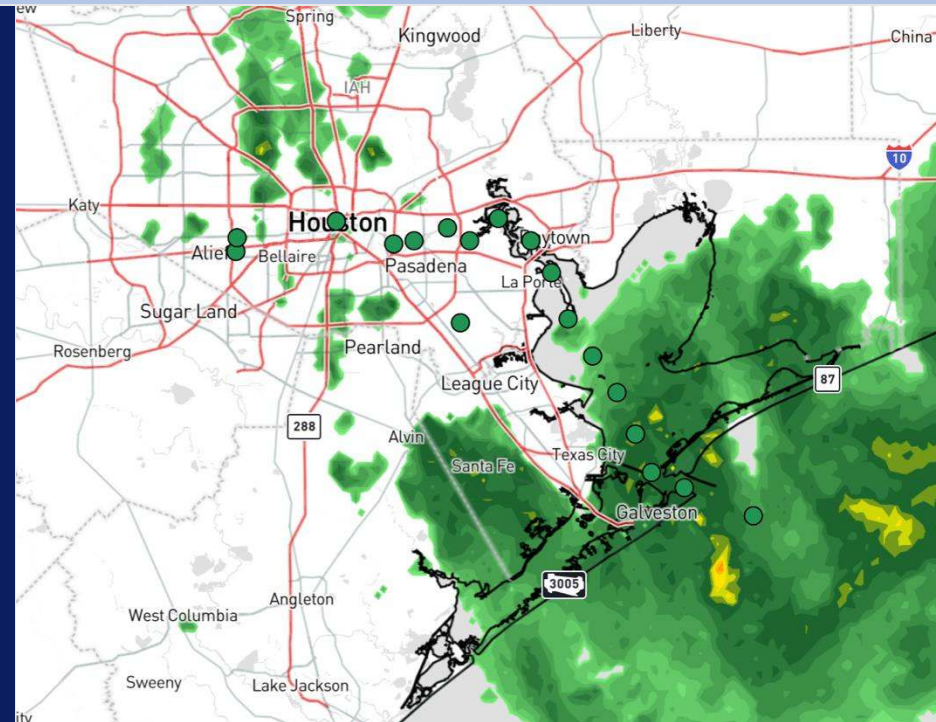
Updated: 12:35 PM CT

Friday, August 30, 2024

Forecaster: Adam Feick

## Weather Headlines

- Frequent periods of downpours / storms favored through the weekend, with **~25 - 45 kt gusts in play.**
- Monitoring a tropical wave as it works towards the Caribbean. Check tropical slides for more info.
- Not favoring any fog risks over the next few days.



**Current Radar: 12:35 PM CT**



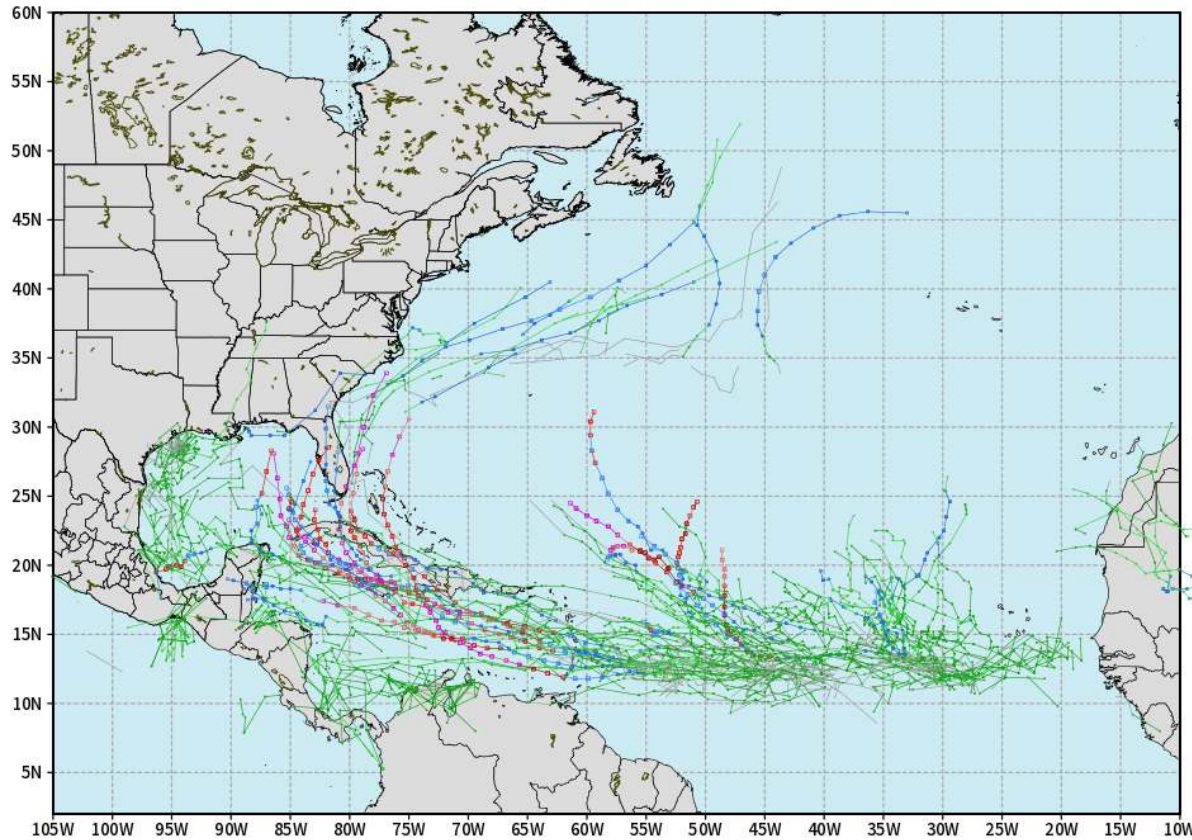
As always, please do not hesitate to reach out to us with any forecast questions via the chat option on Clarity or our on-call number, **(317)-560-8122** press 1 for forecast questions.

# Houston Pilots Tropical Update

## European Model Next 10 Days - Tropical Tracks

ECMWF ATLANTIC EPS Cyclone Locations --> Next [10-days]  
INIT: 00Z30AUG2024 --> UNTIL 00Z09SEP2024

o-o ENSEMBLE MEAN  
o-o 1000 - 1010 hPa  
o-o 980 - 999 hPa  
o-o 960 - 979 hPa  
o-o 950 - 959 hPa  
o-o < 950 hPa



[weathermodels.com](http://weathermodels.com)

Industry Energy according to our TOS (if5580f5Z0019I604)

Monitoring very low-end potential for storm development in the Gulf of Mexico for this upcoming weekend, however not favoring any significant threats through at least the next 7 days.

Favoring Tropical System to Develop E of the Lesser Antilles middle next week.

# Houston Pilots Tropical Update

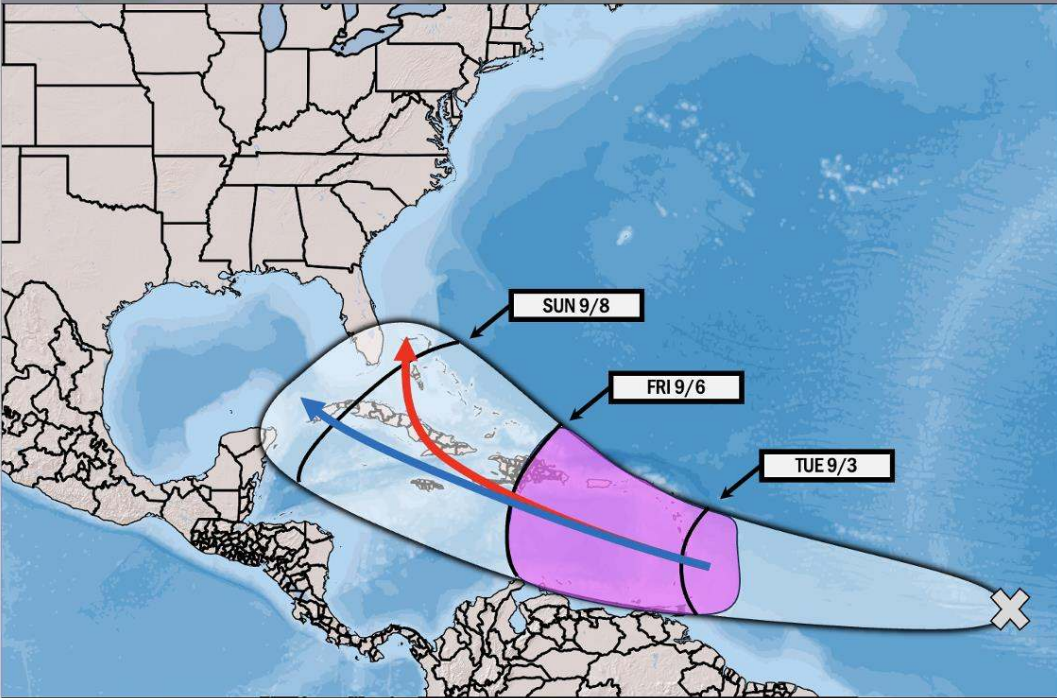


## Potential Francine?

TROPICAL INSIGHT

10:40 PM ET Thursday August 29, 2024

Forecaster: Lowry



**TIMING:** August 29<sup>th</sup> – September 8<sup>th</sup>

### FORECAST NOTES:

- ✓ Tracking general progression of tropical wave above!
- ✓ Area in purple is area where formation chances are highest!
- ✓ Red Arrow: Faster formation and quicker recurve solution
- ✓ Blue Arrow: Slower formation and progression into Gulf



# Houston Pilots Visibility Chart (miles)



## Forecast Confidence



Visibility	Fri 2 pm	Fri 3 pm	Fri 4 pm	Fri 5 pm	Fri 6 pm	Fri 7 pm	Fri 8 pm	Fri 9 pm	Fri 10 pm	Fri 11 pm	Sat 12 am	Sat 1 am	Sat 2 am	Sat 3 am	Sat 4 am	Sat 5 am	Sat 6 am	Sat 7 am	Sat 8 am	Sat 9 am	Sat 10 am	Sat 11 am	Sat 12 pm	Sat 1 pm
Houston Pilots N - 610 Bridge	9	10.1	9	7.9	7.9	9	10.1	10.1	10.1	9	10.1	9	10.1	9	7.9	6.9	6.9	6.9	6.9	5.9	5.9	7.9	9	10.1
Houston Pilots M - Kinder 1	9	10.1	9	7.9	7.9	9	10.1	10.1	10.1	9	10.1	10.1	10.1	9	7.9	6.9	6.9	6.9	6.9	5.9	5.9	7.9	9	10.1
Houston Pilots L - Greens Bayou	10.1	10.1	9	7.9	7.9	10.1	10.1	10.1	10.1	9	10.1	10.1	10.1	9	7.9	6.9	6.9	6.9	6.9	5.9	5.9	9	10.1	10.1
Houston Pilots K - Shell Crude	10.1	10.1	10.1	7.9	7.9	10.1	10.1	10.1	10.1	10.1	10.1	10.1	10.1	10.1	7.9	6.9	6.9	6.9	6.9	5.9	5.9	9	10.1	10.1
Houston Pilots J - Lynchburg Ferries	10.1	10.1	10.1	7.9	7.9	10.1	10.1	10.1	10.1	10.1	10.1	10.1	10.1	10.1	7.9	6.9	6.9	6.9	6.9	5.9	5.9	9	10.1	10.1
Houston Pilots I - Exxon 3	10.1	10.1	10.1	7.9	7.9	10.1	10.1	10.1	10.1	10.1	10.1	10.1	10.1	10.1	7.9	6.9	6.9	6.9	6.9	5.9	6.9	9	10.1	10.1
Houston Pilots H - Morgans Point	6.9	10.1	10.1	7.9	7.9	9	10.1	10.1	10.1	10.1	10.1	10.1	10.1	10.1	7.9	6.9	6.9	7.9	6.9	5.9	6.9	9	10.1	10.1
Houston Pilots G - 75/76	6.9	9	6.9	6.9	6.9	7.9	10.1	10.1	9	10.1	10.1	10.1	10.1	10.1	10.1	10.1	10.1	10.1	10.1	9	9	9	9	9
Houston Pilots F - 63/64	6.9	6.9	6.9	6.9	6.9	7.9	10.1	10.1	9	10.1	9	10.1	10.1	10.1	10.1	10.1	10.1	10.1	10.1	9	9	9	9	9
Houston Pilots E - 51/52	6.9	6.9	6.9	6.9	6.9	7.9	10.1	10.1	9	7.9	9	10.1	10.1	10.1	10.1	10.1	10.1	10.1	10.1	9	9	9	9	12
Houston Pilots D - 37/38	6.9	6.9	6.9	6.9	6.9	7.9	10.1	10.1	9	7.9	9	10.1	10.1	10.1	10.1	10.1	10.1	10.1	10.1	9	9	9	9	12
Houston Pilots C - 25/26	6.9	6.9	6.9	6.9	6.9	7.9	10.1	6.9	9	7.9	9	10.1	7.9	7.9	10.1	10.1	10.1	10.1	10.1	7.9	9	7.9	9	9
Houston Pilots B - 11/12	6.9	6.9	5.9	6.9	6.9	7.9	10.1	6.9	9	7.9	7.9	10.1	7.9	7.9	9	9	10.1	10.1	10.1	7.9	6.9	6.9	9	9
Houston Pilots A - 1 & 2 Bravo	6.9	6.9	5.9	5.9	6.9	7.9	10.1	6.9	9	7.9	7.9	9	7.9	7.9	9	9	10.1	10.1	10.1	6.9	6.9	6.9	8	8

**NOTE: This is automated data that may/may not agree with the official BAM thinking that's found on the daily slides or special visibility report slides. This data should be used as a guide only**

# Houston Pilots Wind Chart



**Forecast Confidence**

Above Normal  Below Normal

Sustained wind 10 Knots

Gusts 15 Knots

Wind from the SE

**Example**

10

15

↖

Wind	Fri 2 pm	Fri 3 pm	Fri 4 pm	Fri 5 pm	Fri 6 pm	Fri 7 pm	Fri 8 pm	Fri 9 pm	Fri 10 pm	Fri 11 pm	Sat 12 am	Sat 1 am	Sat 2 am	Sat 3 am	Sat 4 am	Sat 5 am	Sat 6 am	Sat 7 am	Sat 8 am	Sat 9 am	Sat 10 am	Sat 11 am	Sat 12 pm	Sat 1 pm
Houston Pilots N - 610 Bridge	7 14 ↙	8 15 ↙	8 16 ↙	8 16 ↙	8 15 ↙	8 15 ↙	7 14 ↙	6 13 ↙	6 12 ↙	5 10 ↙	3 9 ↙	3 8 ↙	3 8 ↙	3 8 ↙	3 8 ↙	5 9 ↙	5 9 ↙	5 10 ↙	6 10 ↙	6 10 ↙	6 12 ↙	6 13 ↙	6 13 ↙	7 13 ↙
Houston Pilots M - Kinder 1	7 14 ↙	8 15 ↙	8 16 ↙	8 16 ↙	8 15 ↙	8 15 ↙	7 14 ↙	6 13 ↙	6 12 ↙	5 10 ↙	3 9 ↙	3 8 ↙	3 8 ↙	3 8 ↙	3 8 ↙	5 9 ↙	5 9 ↙	5 10 ↙	6 10 ↙	6 10 ↙	6 12 ↙	6 13 ↙	6 13 ↙	7 13 ↙
Houston Pilots L - Greens Bayou	8 14 ↙	8 15 ↙	8 16 ↙	8 16 ↙	8 15 ↙	8 15 ↙	7 14 ↙	6 13 ↙	6 12 ↙	5 10 ↙	3 9 ↙	3 8 ↙	3 8 ↙	3 8 ↙	3 8 ↙	3 9 ↙	5 9 ↙	5 10 ↙	6 10 ↙	6 12 ↙	6 12 ↙	6 13 ↙	6 13 ↙	7 13 ↙
Houston Pilots K - Shell Crude	8 14 ↙	8 15 ↙	8 16 ↙	8 16 ↙	8 15 ↙	8 15 ↙	7 14 ↙	6 13 ↙	5 10 ↙	5 10 ↙	3 9 ↙	3 8 ↙	3 8 ↙	3 8 ↙	3 8 ↙	3 9 ↙	5 9 ↙	5 10 ↙	6 10 ↙	6 12 ↙	6 12 ↙	6 13 ↙	6 13 ↙	7 13 ↙
Houston Pilots J - Lynchburg Ferries	8 14 ↙	8 15 ↙	8 16 ↙	8 16 ↙	8 15 ↙	7 15 ↙	6 14 ↙	6 13 ↙	5 10 ↙	3 9 ↙	3 9 ↙	3 8 ↙	3 8 ↙	3 8 ↙	3 8 ↙	3 9 ↙	3 9 ↙	5 10 ↙	5 10 ↙	6 12 ↙	6 12 ↙	6 13 ↙	6 13 ↙	6 13 ↙
Houston Pilots I - Exxon 3	10 16 ↙	10 17 ↙	10 17 ↙	10 17 ↙	10 16 ↙	10 16 ↙	10 15 ↙	9 14 ↙	8 13 ↙	8 13 ↙	8 12 ↙	7 10 ↙	7 10 ↙	7 10 ↙	8 12 ↙	8 12 ↙	8 12 ↙	8 13 ↙	9 13 ↙	8 13 ↙	8 13 ↙	8 13 ↙	8 14 ↙	8 14 ↙
Houston Pilots H - Morgans Point	10 16 ↙	10 17 ↙	10 17 ↙	10 17 ↙	10 16 ↙	10 15 ↙	10 15 ↙	9 14 ↙	8 13 ↙	8 13 ↙	8 12 ↙	7 10 ↙	7 10 ↙	7 10 ↙	7 10 ↙	8 12 ↙	8 12 ↙	8 13 ↙	8 13 ↙	8 13 ↙	8 13 ↙	8 13 ↙	8 14 ↙	8 14 ↙
Houston Pilots G - 75/76	10 16 ↙	10 17 ↙	10 17 ↙	10 17 ↙	10 16 ↙	10 15 ↙	10 14 ↙	10 14 ↙	9 13 ↙	9 12 ↙	8 10 ↙	8 10 ↙	8 10 ↙	8 12 ↙	8 12 ↙	8 13 ↙	8 13 ↙	9 14 ↙	10 15 ↙	9 15 ↙	9 15 ↙	9 15 ↙	9 15 ↙	8 14 ↙
Houston Pilots F - 63/64	10 16 ↙	10 17 ↙	10 17 ↙	10 17 ↙	10 16 ↙	10 15 ↙	10 14 ↙	10 13 ↙	9 12 ↙	9 12 ↙	8 10 ↙	8 10 ↙	7 10 ↙	8 12 ↙	8 12 ↙	8 13 ↙	8 13 ↙	9 14 ↙	10 15 ↙	9 15 ↙	9 15 ↙	9 15 ↙	9 14 ↙	8 14 ↙
Houston Pilots E - 51/52	10 16 ↙	10 16 ↙	10 17 ↙	10 17 ↙	10 16 ↙	10 15 ↙	10 14 ↙	10 13 ↙	9 12 ↙	9 12 ↙	8 10 ↙	8 10 ↙	7 10 ↙	7 10 ↙	7 10 ↙	8 12 ↙	8 12 ↙	8 13 ↙	9 14 ↙	9 14 ↙	9 14 ↙	9 15 ↙	9 14 ↙	8 14 ↙
Houston Pilots D - 37/38	9 15 ↙	10 16 ↙	10 16 ↙	10 17 ↙	10 16 ↙	10 15 ↙	10 14 ↙	10 13 ↙	9 12 ↙	8 11 ↙	8 10 ↙	8 10 ↙	7 10 ↙	7 10 ↙	7 10 ↙	7 12 ↙	8 12 ↙	8 13 ↙	8 13 ↙	8 14 ↙	8 14 ↙	8 14 ↙	8 14 ↙	8 14 ↙
Houston Pilots C - 25/26	9 15 ↙	10 16 ↙	10 16 ↙	10 16 ↙	10 15 ↙	10 14 ↙	10 13 ↙	9 12 ↙	8 11 ↙	8 10 ↙	8 10 ↙	7 10 ↙	6 10 ↙	6 10 ↙	6 10 ↙	7 12 ↙	7 12 ↙	7 12 ↙	8 13 ↙	8 13 ↙	8 13 ↙	8 14 ↙	8 14 ↙	8 13 ↙
Houston Pilots B - 11/12	9 15 ↙	10 16 ↙	10 16 ↙	10 16 ↙	10 15 ↙	10 14 ↙	9 13 ↙	8 12 ↙	8 11 ↙	8 10 ↙	7 10 ↙	6 10 ↙	6 10 ↙	6 10 ↙	6 10 ↙	6 12 ↙	6 12 ↙	6 12 ↙	7 13 ↙	7 13 ↙	7 13 ↙	8 14 ↙	8 13 ↙	8 13 ↙
Houston Pilots A - 1 & 2 Bravo	10 15 ↙	10 16 ↙	10 16 ↙	10 16 ↙	10 15 ↙	10 14 ↙	10 13 ↙	10 12 ↙	9 11 ↙	9 11 ↙	8 10 ↙	8 10 ↙	8 12 ↙	8 12 ↙	8 12 ↙	8 12 ↙	8 12 ↙	8 13 ↙	8 13 ↙	8 14 ↙	8 14 ↙	8 14 ↙	8 14 ↙	8 13 ↙

**NOTE: This is automated data that may/may not agree with the official BAM thinking that's found on the daily slides. This data should be used as a guide only.**

# Houston Pilots: FRI. 8/30/2024



## Forecast Discussion

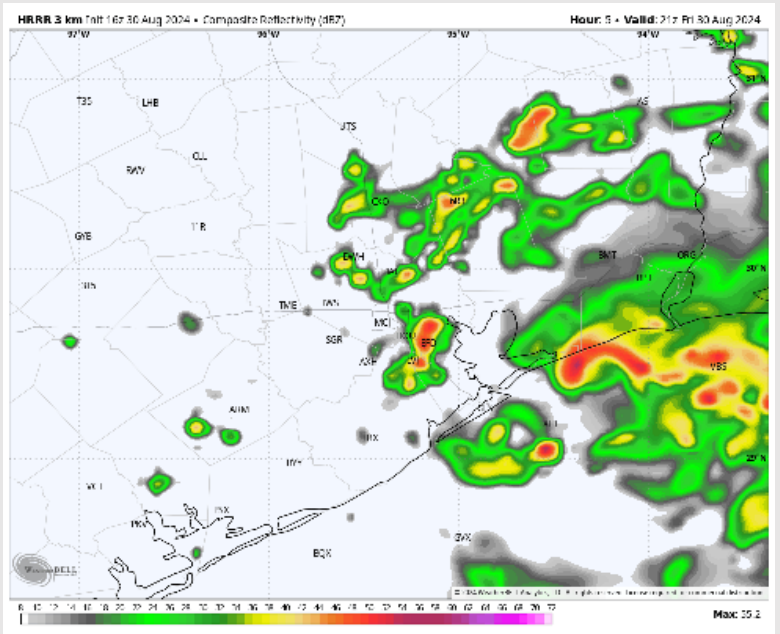
**Precip:** Favoring isolated pop-up showers/storms to be possible from 1PM to 10PM. Scattered heavy showers will be likely during the overnight hours. **Lightning and gusts of 30 – 40 kts will be possible.**

**Wind:** Winds will be variable out of the SE to NE for the rest of the day. **N of Morgan's Point:** Winds will be at 6 – 11 kts throughout the day. **S of Morgan's Point:** Winds will be 7 – 14 kts through the rest of the day.

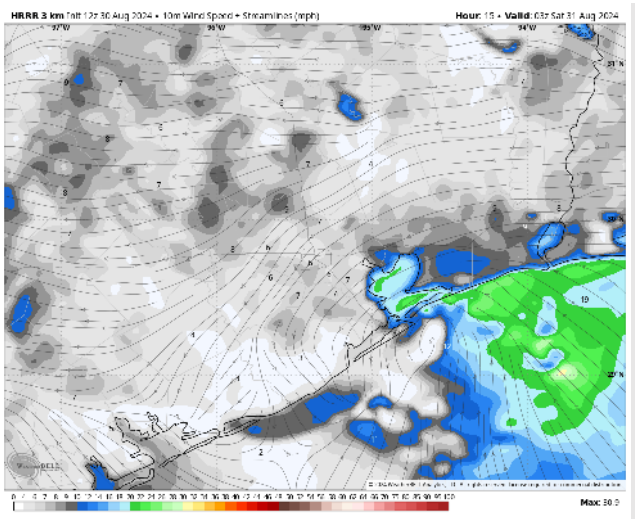
**Low Temps:** **N of Morgan's Point:** Upper 70s. **S of Morgan's Point:** Low 80s F.

**Visibility:** Not favoring any fog concerns today, however, heavy downpours will reduce visibilities.

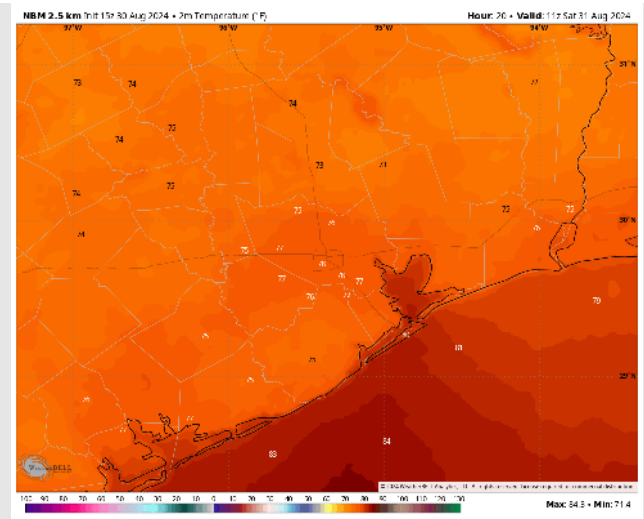
## Precip Image: 4 PM CT



Wind Speed:  
10 PM CT



Low Temps  
SAT AM



# Houston Pilots: SAT. 8/31/2024



## Forecast Discussion

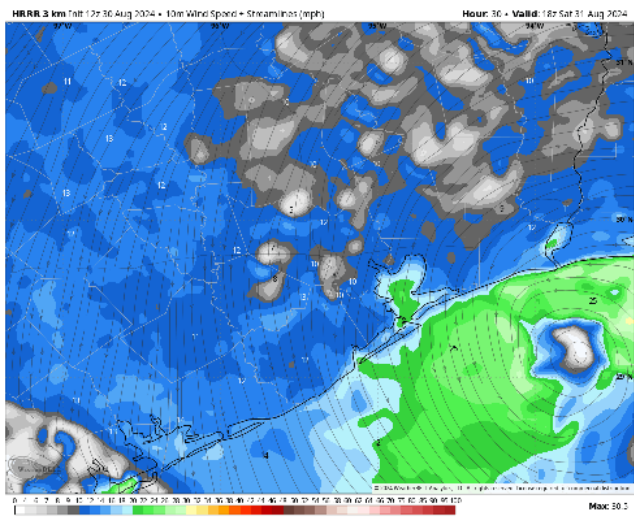
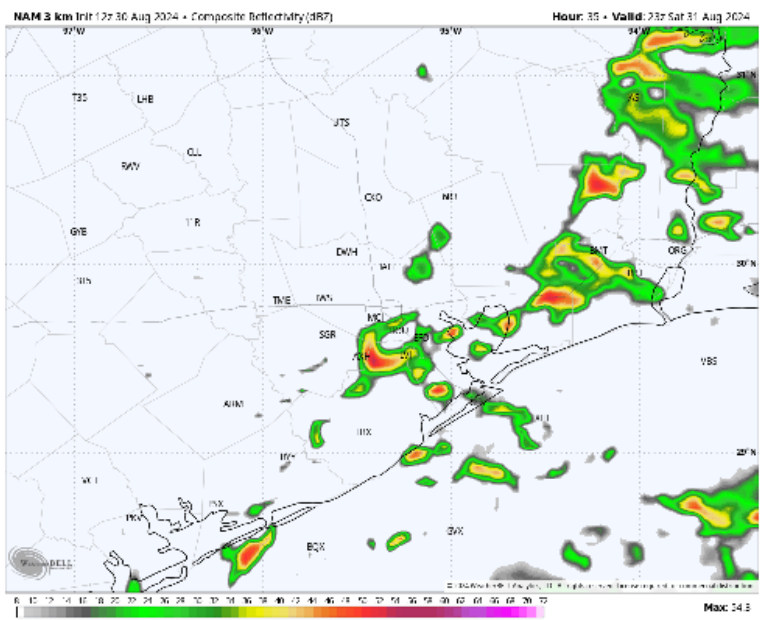
**Precip:** Scattered (40%) chances of downpours / storms will be possible from 12AM through 7AM. Hit or miss pop ups (30%) will be possible as well 1PM-8PM. **Wind gusts in storms can reach 35 - 45 kts.**

**Wind:** Winds will be out of the N through 12PM before shifting to out of the NE through the rest of the day. **N of Morgan's Point:** Winds will be sustained 6 - 12 kts with gusts up 20 kts throughout the day. **S of Morgan's Point:** Winds will be sustained at 10 - 15 kts with gusts of 16-25 kts throughout the day

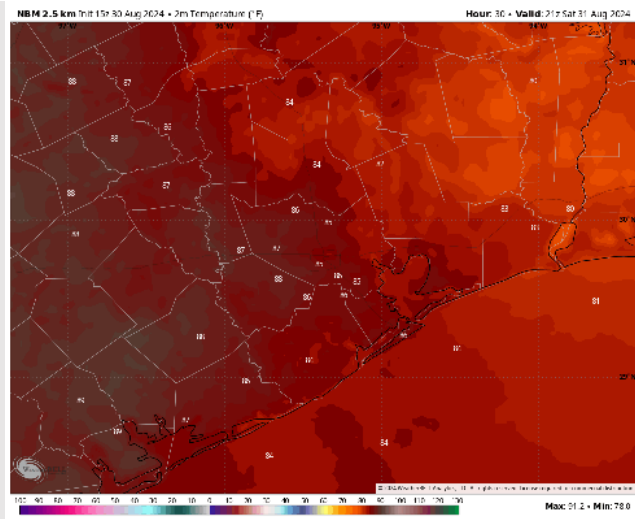
**High Temps:** **N of Morgan's Point:** Upper 80s F. **S of Morgan's Point:** Mid 80s F.

**Visibility:** Not anticipating any fog concerns Saturday, however, visibilities can be reduced in heavy downpours.

## Precip Image: 6 PM CT



Wind Speed:  
2 PM CT



High Temps  
Saturday

# Houston Pilots: SUN. 9/1/2024



## Forecast Discussion

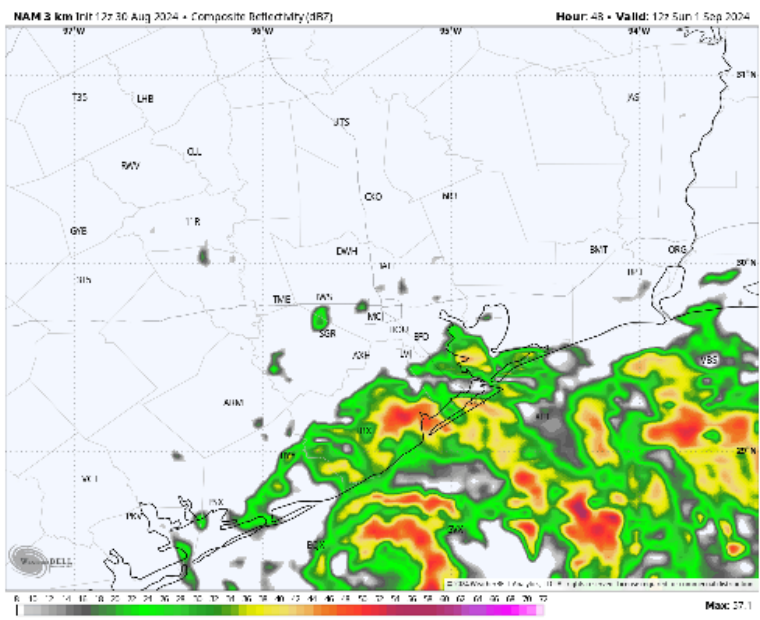
**Precip:** Showers / storm chances will work in beginning at 6AM and continue throughout the rest of the day. Greatest timeframe favored to be between 6 – 9 AM for widespread showers/storms and then 3PM-7PM  
**Wind gusts of 30-35 kts will be possible with strongest storms!**

**Wind:** Winds will be generally out of the E throughout the day on Sunday. **N of Morgan's Point:** Winds at 5 – 10 kts throughout the day. **S of Morgan's Point:** Winds will be sustained at 7 – 12 kts throughout the rest of the day!

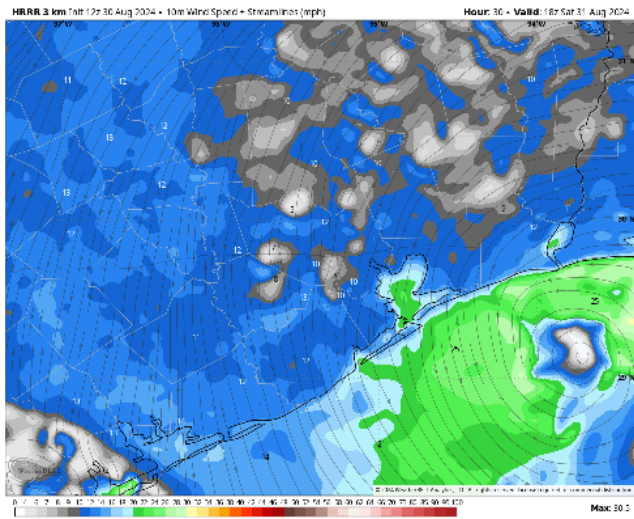
**High Temps:** **N of Morgan's Point:** Mid to upper 80's. **S of Morgan's Point:** Mid 80s F.

**Visibility:** Not anticipating any fog concerns Sunday, however, reduced visibilities will be possible in heavy downpours.

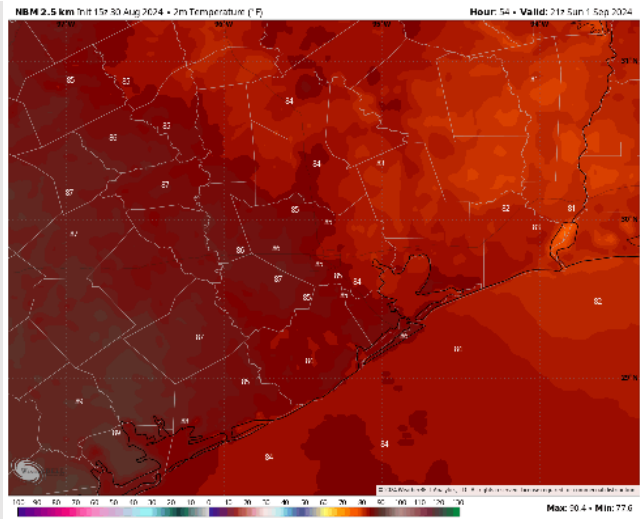
## Precip Image: 7 AM CT



Wind Speed  
2 PM CT



High Temps  
Sunday

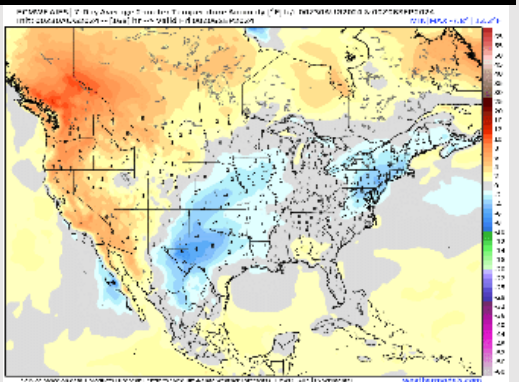




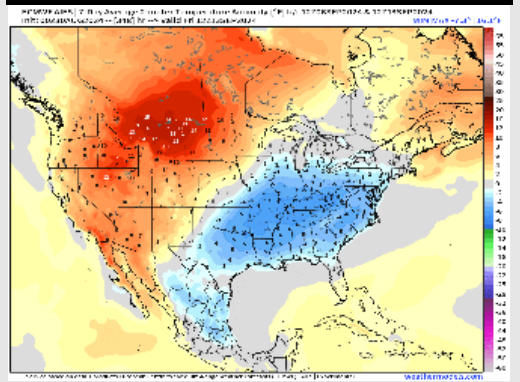
# Houston Pilots: 8/30/24



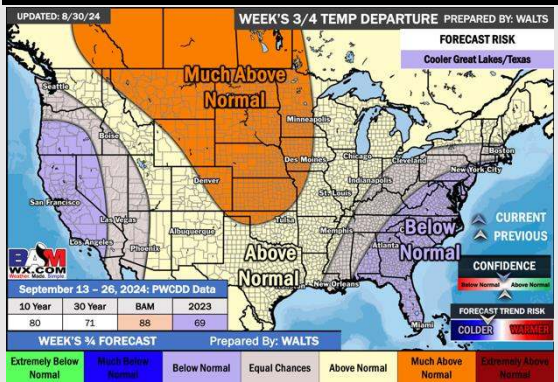
**Next 7 Day Temperature Departure**



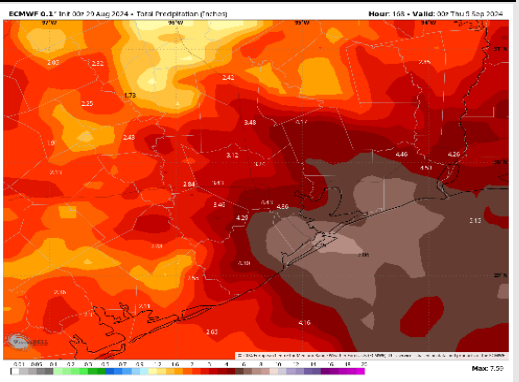
**8-14 Day Temperature Departure**



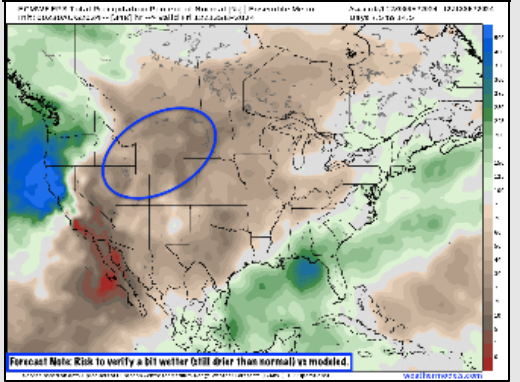
**15-30 Day Temperature Departure**



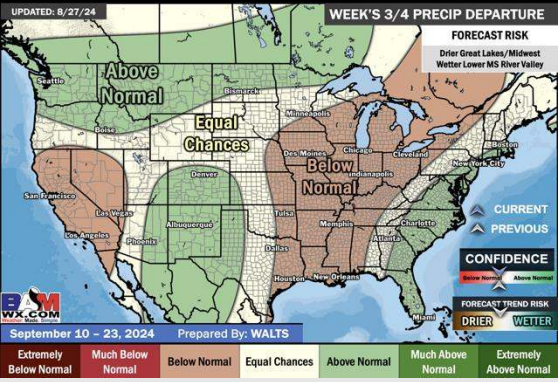
**Next 7 Day Total Precipitation**



**8-14 Day % of Average Precip.**



**15-30 Day % of Average Precip.**



- Temps are expected to be near normal for the week 1 timeframe. Scattered rain chances are expected daily through the next week.
- Slightly below normal temperatures are favored into week 2 with slight above average rain chances.
- Above normal temperatures and below average precipitation chances are expected for the weeks 3/4 timeframe. As we approach the beginning of September, Atlantic tropical activity looks to ramp up. We will be monitoring closely and providing updates as needed.