

Houston Pilots Forecast Package



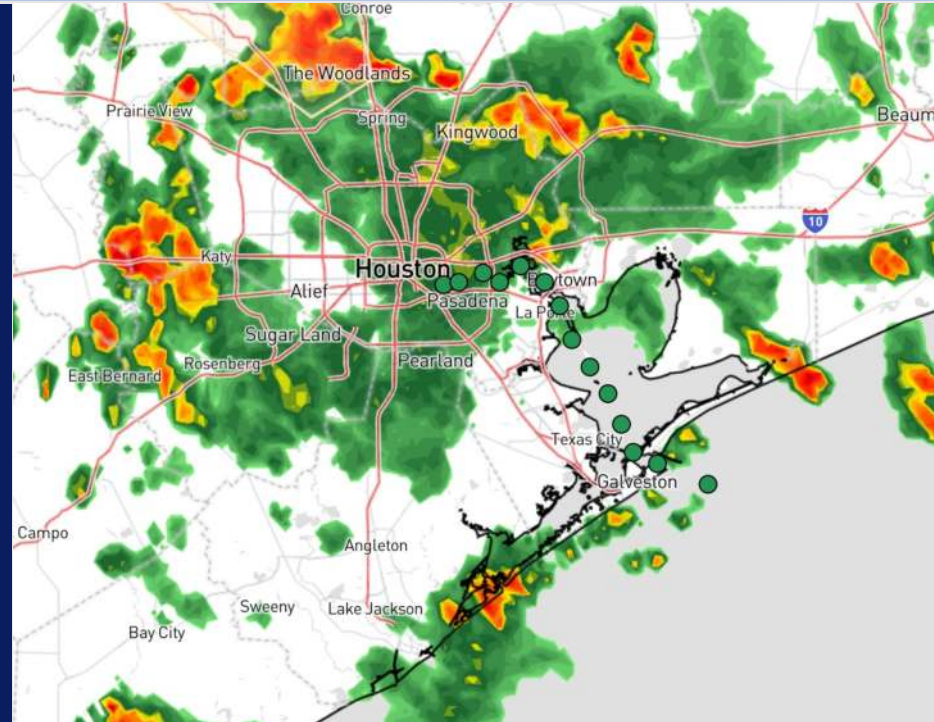
Updated: 12:55 PM CT

Thursday, August 29, 2024

Forecaster: Hope Kleitsch

Weather Headlines

- Frequent periods of downpours / storms favored through weekend, with **~25 – 45 kt gusts in play.**
- Monitoring a gradual increase in tropical activity across the Atlantic over the next week or two.
- Not favoring any fog risks over the next few days.



Current Radar: 12:50 PM CT



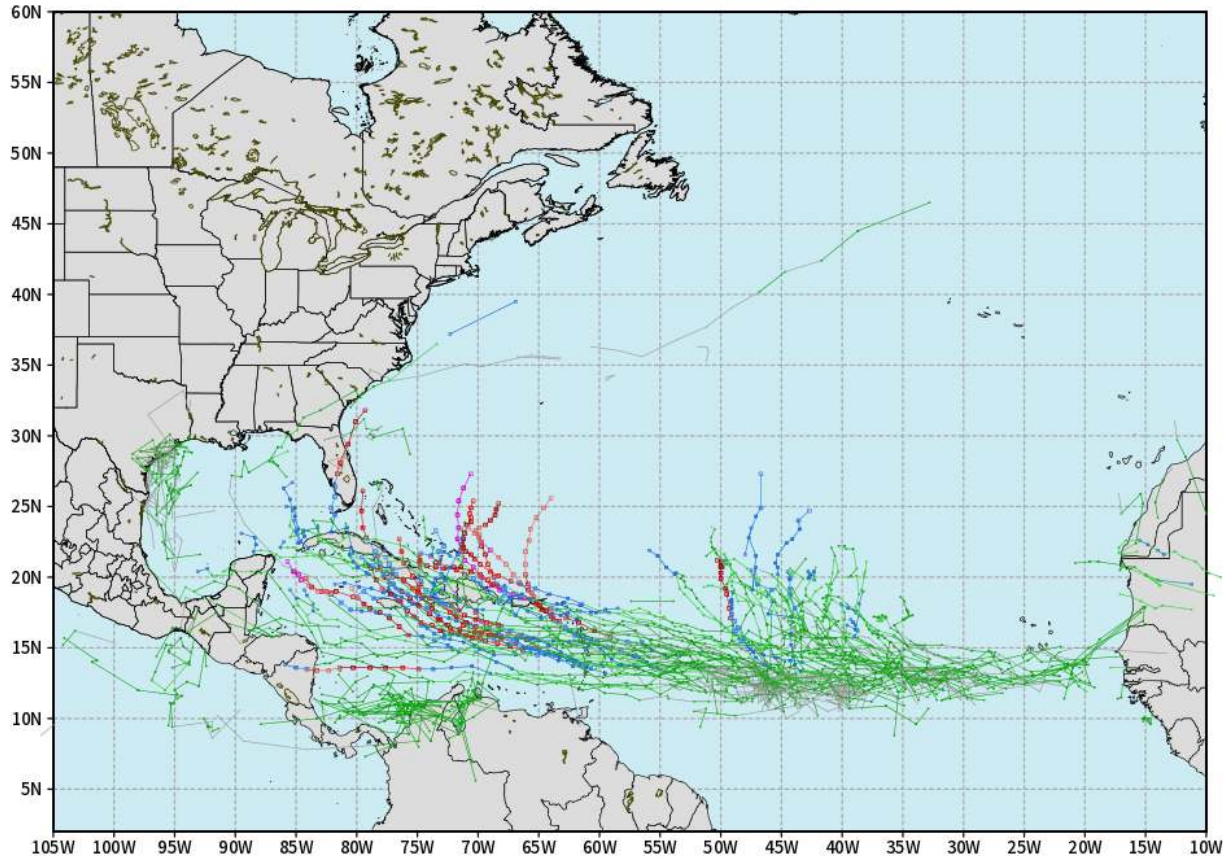
As always, please do not hesitate to reach out to us with any forecast questions via the chat option on Clarity or our on-call number, **(317)-560-8122** press **1** for forecast questions.

Houston Pilots Tropical Update

European Model Next 10 Days - Tropical Tracks

ECMWF ATLANTIC EPS Cyclone Locations --> Next [10-days]
INIT: 00Z29AUG2024 --> UNTIL 00Z08SEP2024

o-o ENSEMBLE MEAN
o-o 1000 - 1010 hPa
o-o 980 - 999 hPa
o-o 960 - 979 hPa
o-o 950 - 959 hPa
o-o < 950 hPa



weathermodels.com

Monitoring very low-end potential for storm development in the Gulf of Mexico for this upcoming weekend, however not favoring any significant threats through at least the next 7 days.

Favoring Tropical System to Develop E of the Lesser Antilles early next week.

Houston Pilots Visibility Chart (miles)



Forecast Confidence



Visibility	Thu 2 pm	Thu 3 pm	Thu 4 pm	Thu 5 pm	Thu 6 pm	Thu 7 pm	Thu 8 pm	Thu 9 pm	Thu 10 pm	Thu 11 pm	Fri 12 am	Fri 1 am	Fri 2 am	Fri 3 am	Fri 4 am	Fri 5 am	Fri 6 am	Fri 7 am	Fri 8 am	Fri 9 am	Fri 10 am	Fri 11 am	Fri 12 pm	Fri 1 pm
Houston Pilots N - 610 Bridge	10.1	10.1	10.1	10.1	10.1	10.1	10.1	10.1	10.1	10.1	10.1	10.1	10.1	10.1	6.9	6.9	6.9	6.9	6.9	7.9	10.1	10.1	10.1	10.1
Houston Pilots M - Kinder 1	10.1	10.1	10.1	10.1	10.1	10.1	10.1	10.1	10.1	10.1	10.1	10.1	10.1	10.1	6.9	5.9	6.9	6.9	4.9	6.9	7.9	10.1	10.1	10.1
Houston Pilots L - Greens Bayou	10.1	10.1	10.1	9	10.1	10.1	10.1	10.1	10.1	10.1	10.1	10.1	10.1	6.9	6.9	5.9	4.9	4.9	4.9	6.9	7.9	10.1	10.1	10.1
Houston Pilots K - Shell Crude	10.1	10.1	10.1	9	10.1	10.1	10.1	10.1	10.1	10.1	10.1	10.1	10.1	6.9	6.9	5.9	4.9	4.9	4.9	6.9	7.9	10.1	10.1	10.1
Houston Pilots J - Lynchburg Ferries	10.1	10.1	10.1	9	10.1	10.1	10.1	10.1	10.1	10.1	10.1	10.1	10.1	6.9	5.9	4.9	4.9	4.9	4.9	4.9	6.9	10.1	10.1	10.1
Houston Pilots I - Exxon 3	10.1	10.1	10.1	9	10.1	10.1	10.1	10.1	10.1	10.1	10.1	10.1	10.1	6.9	4.9	4.9	4.9	4.9	4.9	4.9	6.9	10.1	10.1	10.1
Houston Pilots H - Morgans Point	10.1	10.1	10.1	10.1	10.1	10.1	10.1	10.1	10.1	10.1	10.1	10.1	10.1	6.9	4.9	4.9	4.9	4.9	4.9	4.9	6.9	10.1	10.1	10.1
Houston Pilots G - 75/76	10.1	10.1	10.1	10.1	10.1	10.1	10.1	10.1	10.1	10.1	10.1	10.1	10.1	10.1	9	5.9	6.9	6.9	6.9	6.9	7.9	10.1	10.1	9
Houston Pilots F - 63/64	10.1	10.1	10.1	10.1	10.1	10.1	10.1	10.1	10.1	10.1	10.1	10.1	10.1	10.1	10.1	6.9	6.9	6.9	6.9	6.9	9	10.1	10.1	9
Houston Pilots E - 51/52	10.1	10.1	10.1	10.1	10.1	10.1	10.1	10.1	10.1	10.1	10.1	10.1	10.1	10.1	10.1	9	10.1	10.1	10.1	9	10.1	10.1	10.1	9
Houston Pilots D - 37/38	10.1	10.1	10.1	10.1	10.1	10.1	10.1	10.1	10.1	10.1	10.1	10.1	10.1	10.1	10.1	9	10.1	10.1	10.1	9	10.1	10.1	10.1	8
Houston Pilots C - 25/26	10.1	10.1	10.1	10.1	10.1	9	10.1	10.1	10.1	10.1	10.1	10.1	10.1	10.1	10.1	10.1	10.1	10.1	10.1	10.1	10.1	10.1	10.1	6
Houston Pilots B - 11/12	10.1	10.1	10.1	10.1	10.1	9	10.1	10.1	10.1	10.1	10.1	10.1	10.1	10.1	10.1	10.1	10.1	10.1	10.1	10.1	10.1	10.1	10.1	4
Houston Pilots A - 1 & 2 Bravo	10.1	10.1	10.1	10.1	10.1	10.1	10.1	10.1	10.1	9	10.1	10.1	10.1	10.1	10.1	9	10.1	10.1	10.1	9	10.1	10.1	10.1	2

NOTE: This is automated data that may/may not agree with the official BAM thinking that's found on the daily slides or special visibility report slides. This data should be used as a guide only

Houston Pilots Wind Chart



Sustained wind 10 Knots

Gusts 15 Knots

Wind from the SE

Example

10

15

↙

Wind	Thu 2 pm	Thu 3 pm	Thu 4 pm	Thu 5 pm	Thu 6 pm	Thu 7 pm	Thu 8 pm	Thu 9 pm	Thu 10 pm	Thu 11 pm	Fri 12 am	Fri 1 am	Fri 2 am	Fri 3 am	Fri 4 am	Fri 5 am	Fri 6 am	Fri 7 am	Fri 8 am	Fri 9 am	Fri 10 am	Fri 11 am	Fri 12 pm	Fri 1 pm	
Houston Pilots N - 610 Bridge	8 15 ←	8 16 ←	8 17 ←	8 18 ←	8 17 ←	8 16 ←	8 16 ←	7 14 ←	6 13 ←	6 12 ←	5 10 ←	5 10 ←	3 9 ←	3 8 ←	3 8 ←	3 8 ←	3 8 ←	3 9 ←	5 9 ←	5 9 ←	5 9 ←	6 10 ←	6 12 ←	6 12 ←	
Houston Pilots M - Kinder 1	8 15 ←	8 16 ←	8 17 ←	9 18 ←	8 17 ←	8 16 ←	8 16 ←	7 14 ←	6 13 ←	6 12 ←	5 10 ←	5 10 ←	3 9 ←	3 8 ←	3 8 ←	3 8 ←	3 8 ←	3 9 ←	5 9 ←	5 9 ←	5 9 ←	6 10 ←	6 12 ←	6 12 ←	
Houston Pilots L - Greens Bayou	8 15 ←	8 16 ←	8 17 ←	8 18 ←	8 17 ←	8 16 ←	8 16 ←	7 14 ←	6 13 ←	6 12 ←	5 10 ←	5 10 ←	3 9 ←	3 8 ←	3 8 ←	3 8 ←	3 8 ←	3 9 ←	5 9 ←	5 9 ←	5 10 ←	6 10 ←	6 12 ←	6 12 ←	
Houston Pilots K - Shell Crude	8 15 ←	8 16 ←	8 17 ←	8 17 ←	8 17 ←	8 16 ←	8 16 ←	7 14 ←	6 13 ←	6 13 ←	5 12 ←	5 10 ←	3 9 ←	3 8 ←	3 8 ←	3 8 ←	3 8 ←	3 8 ←	5 9 ←	5 9 ←	5 10 ←	6 10 ←	6 12 ←	6 12 ←	
Houston Pilots J - Lynchburg Ferries	8 15 ←	8 16 ←	8 17 ←	8 17 ←	8 16 ←	8 16 ←	7 15 ←	6 14 ←	6 13 ←	6 12 ←	5 10 ←	3 9 ←	3 9 ←	3 8 ←	3 8 ←	3 8 ←	3 8 ←	3 8 ←	3 9 ←	5 9 ←	5 10 ←	6 12 ←	6 12 ←	6 12 ←	
Houston Pilots I - Exxon 3	10 17 ←	12 18 ←	12 18 ←	13 20 ←	12 18 ←	12 17 ←	12 17 ←	10 16 ←	10 15 ←	10 15 ←	9 14 ←	8 13 ←	8 13 ←	8 12 ←	8 12 ←	8 10 ←	8 10 ←	8 12 ←	8 12 ←	8 12 ←	8 12 ←	8 12 ←	8 13 ←	7 13 ←	8 13 ←
Houston Pilots H - Morgans Point	10 17 ←	12 17 ←	12 18 ←	13 20 ←	13 18 ←	12 17 ←	12 17 ←	10 16 ←	10 15 ←	10 15 ←	9 14 ←	9 13 ←	8 13 ←	8 12 ←	8 12 ←	7 10 ←	7 10 ←	7 10 ←	8 12 ←	8 12 ←	7 12 ←	8 12 ←	8 13 ←	7 13 ←	8 13 ←
Houston Pilots G - 75/76	10 17 ←	12 18 ←	13 18 ←	13 20 ←	13 20 ←	13 20 ←	13 17 ←	13 17 ←	12 16 ←	12 16 ←	10 15 ←	10 15 ←	10 14 ←	9 14 ←	8 13 ←	8 13 ←	8 12 ←	8 12 ←	8 13 ←	8 13 ←	8 13 ←	8 13 ←	8 13 ←	8 13 ←	8 13 ←
Houston Pilots F - 63/64	10 17 ←	12 18 ←	12 18 ←	13 20 ←	13 20 ←	13 20 ←	13 18 ←	13 17 ←	12 16 ←	12 16 ←	10 15 ←	10 15 ←	10 15 ←	9 14 ←	8 13 ←	8 12 ←	8 12 ←	8 12 ←	8 12 ←	8 13 ←	8 13 ←	8 13 ←	8 13 ←	8 13 ←	8 13 ←
Houston Pilots E - 51/52	10 17 ←	12 18 ←	13 18 ←	13 20 ←	13 20 ←	13 20 ←	13 18 ←	13 17 ←	13 16 ←	12 16 ←	10 15 ←	10 15 ←	10 15 ←	9 14 ←	8 13 ←	8 13 ←	8 12 ←	8 12 ←	8 12 ←	8 12 ←	8 12 ←	8 13 ←	8 13 ←	8 13 ←	8 13 ←
Houston Pilots D - 37/38	10 17 ←	12 18 ←	13 18 ←	13 20 ←	13 20 ←	13 20 ←	13 18 ←	13 17 ←	13 16 ←	12 16 ←	10 15 ←	10 15 ←	10 15 ←	9 14 ←	8 13 ←	8 13 ←	8 12 ←	8 12 ←	8 12 ←	8 12 ←	8 12 ←	8 12 ←	8 13 ←	8 13 ←	8 13 ←
Houston Pilots C - 25/26	10 17 ←	12 17 ←	12 18 ←	13 20 ←	13 20 ←	13 18 ←	13 18 ←	12 17 ←	12 16 ←	12 16 ←	10 16 ←	10 15 ←	10 15 ←	9 14 ←	8 13 ←	8 13 ←	8 12 ←	8 12 ←	7 12 ←	7 10 ←	7 12 ←	8 12 ←	8 13 ←	8 13 ←	8 13 ←
Houston Pilots B - 11/12	10 17 ←	12 18 ←	12 18 ←	13 20 ←	12 18 ←	12 18 ←	10 17 ←	10 17 ←	10 16 ←	10 16 ←	9 15 ←	9 15 ←	8 15 ←	8 14 ←	8 13 ←	7 13 ←	7 12 ←	6 12 ←	6 10 ←	7 12 ←	7 12 ←	7 12 ←	8 13 ←	8 13 ←	8 13 ←
Houston Pilots A - 1 & 2 Bravo	12 18 ←	13 18 ←	13 20 ←	13 20 ←	13 21 ←	13 21 ←	13 20 ←	13 18 ←	13 18 ←	13 18 ←	13 17 ←	12 16 ←	10 16 ←	10 15 ←	10 14 ←	9 14 ←	8 14 ←	8 13 ←	8 13 ←	8 13 ←	8 13 ←	8 13 ←	8 13 ←	8 14 ←	8 14 ←

NOTE: This is automated data that may/may not agree with the official BAM thinking that's found on the daily slides. This data should be used as a guide only.

Houston Pilots: THU. 8/29/2024



Forecast Discussion

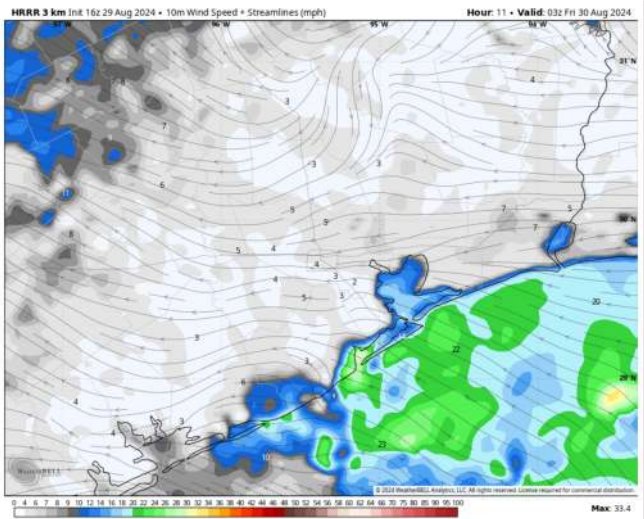
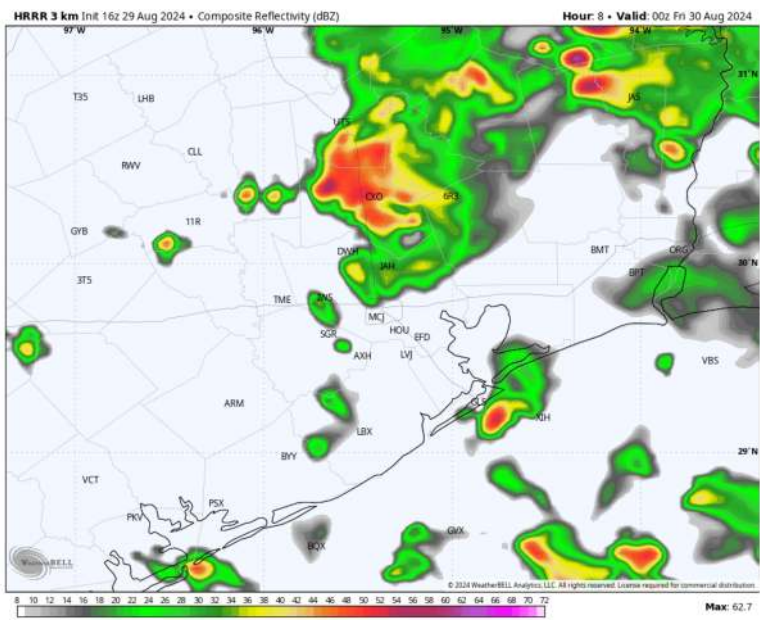
Precip: Showers / storms will be possible through the rest of the day for all Stations. Greatest coverage through 7PM, then chances will become more scattered in nature. **Gusts of 25 - 35 kts will be possible with storms.**

Wind: Winds will be generally out of the E/SE throughout the rest of the day, although rather variable at times between waves of storms. **N of Morgan's Point:** Winds at 4 - 8 kts through the rest of the day. **S of Morgan's Point:** Winds at 12 - 17 kts through the rest of the day. **Non-Thunderstorm Gusts of up to 25kts can't be ruled out for the Boarding Station.**

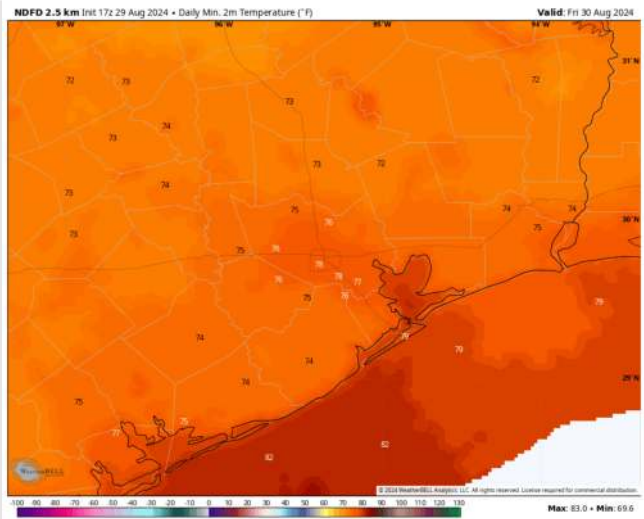
Low Temps: **N of Morgan's Point:** Mid to Upper 70s. **S of Morgan's Point:** Upper 70s F.

Visibility: Not anticipating any fog concerns for today, however, reduced visibilities will be possible in heavy downpours.

Precip Image: 7 PM CT



Wind Speed
10 PM CT



Low Temps
FRI AM

Houston Pilots: FRI. 8/30/2024



Forecast Discussion

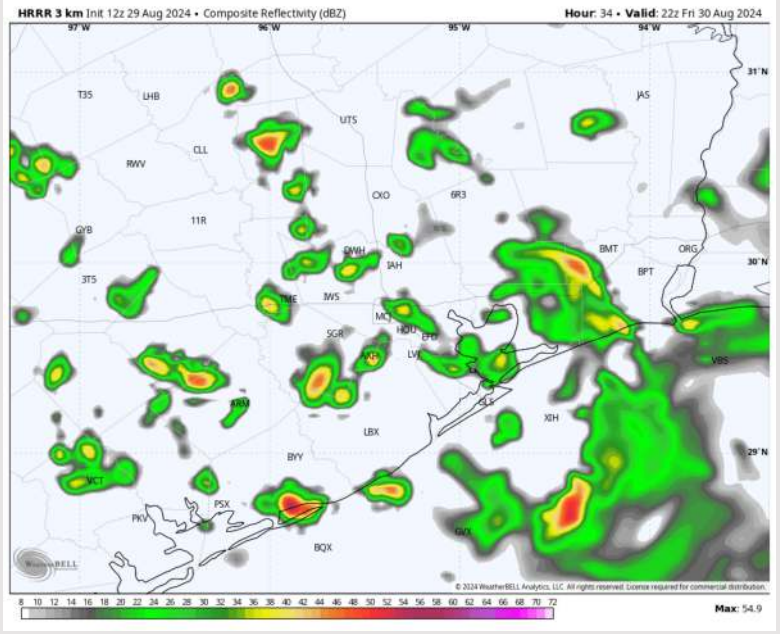
Precip: Favoring scattered showers/storms to be possible from 3AM to 10PM. Severe weather is not favored with these storms, however, **lightning and gusts of 30 – 40 kts will be possible.**

Wind: Winds will range from out of the NE to SE for much of the day, becoming variable at times. **N of Morgan's Point:** Winds will be at 5 – 11 kts throughout the day. **S of Morgan's Point:** Winds will be 12 – 17 kts throughout the day.

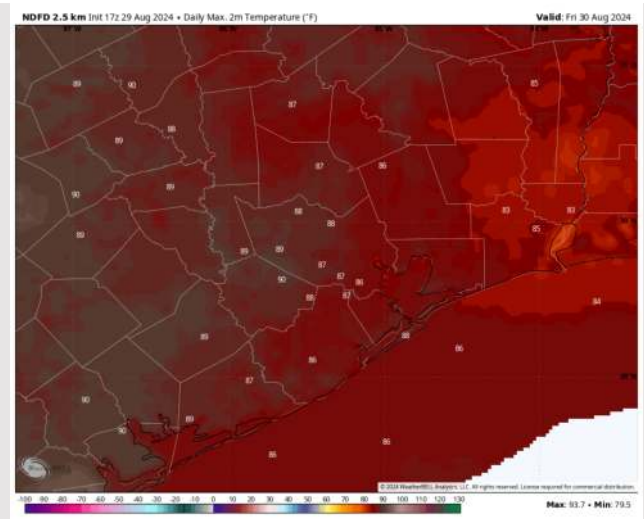
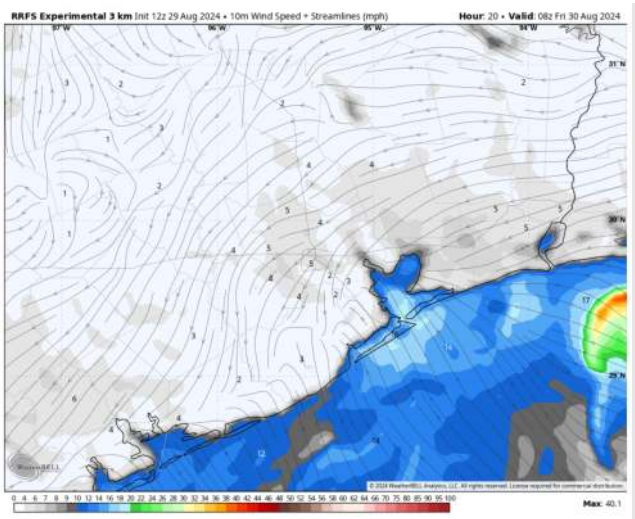
High Temps: **N of Morgan's Point:** Upper 80s. **S of Morgan's Point:** Mid to upper 80s F.

Visibility: Not favoring any fog concerns for Friday, however, heavy downpours will reduce visibilities.

Precip Image: 5 PM CT



Wind Speed:
3 AM CT



High Temps
Friday

Houston Pilots: SAT. 8/31/2024



Forecast Discussion

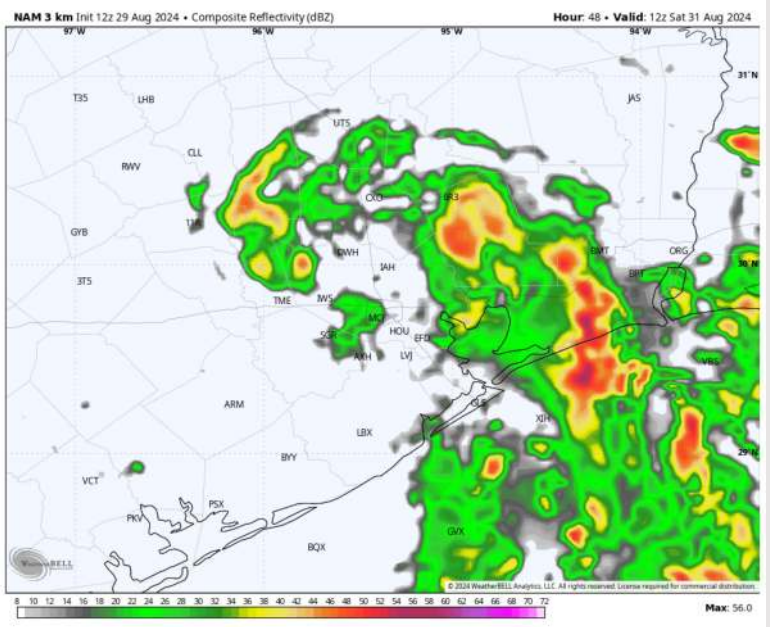
Precip: Scattered (50%) chances of downpours / storms will be possible from 12AM through 8PM, with the greatest coverage expected during the AM hour. **Wind gusts in storms can reach 35 - 45 kts.**

Wind: Winds will be out of the E/SE for much of the day. **N of Morgan's Point:** Winds at 4 - 9 kts throughout the day. **S of Morgan's Point:** Winds at 8 - 15 kts through Saturday.

High Temps: **N of Morgan's Point:** Upper 80s F. **S of Morgan's Point:** Mid 80s F.

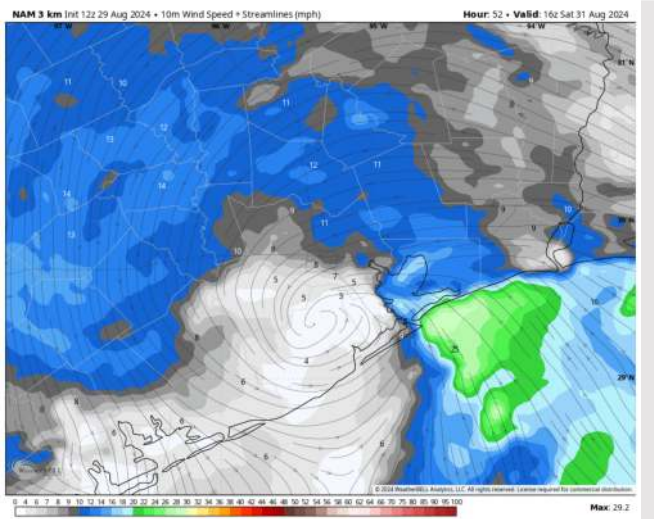
Visibility: Not anticipating any visibility concerns Saturday, however, visibilities can be reduced in heavy downpours.

Precip Image: 7 AM CT

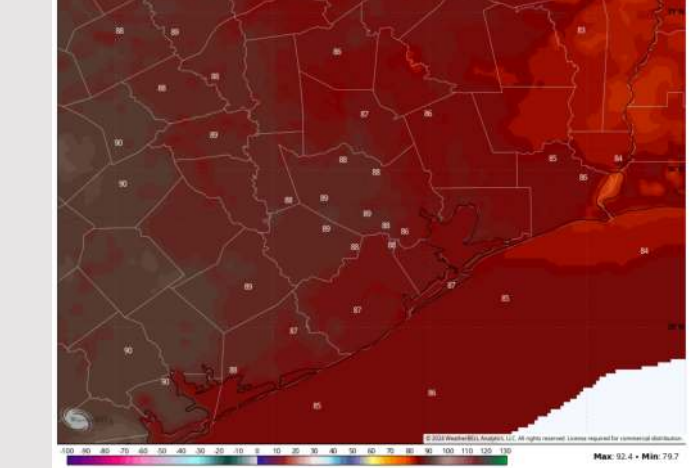


Wind Speed:

11 AM CT



Daily Max. 2m Temperature (°F)

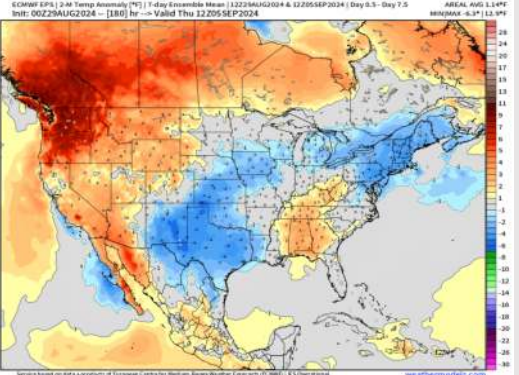


High Temps Saturday

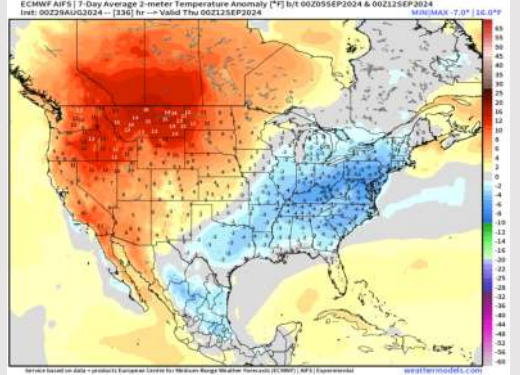
Houston Pilots: 8/29/24



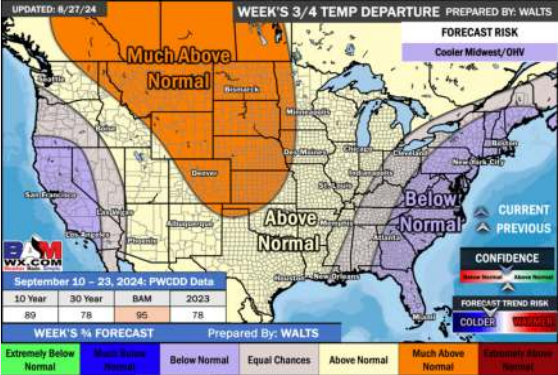
Next 7 Day Temperature Departure



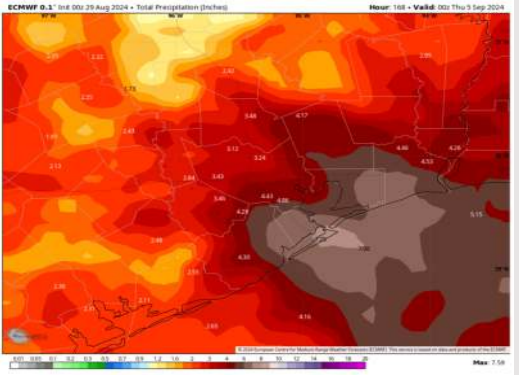
8-14 Day Temperature Departure



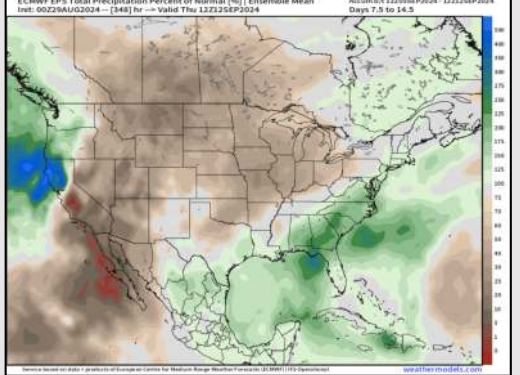
15-30 Day Temperature Departure



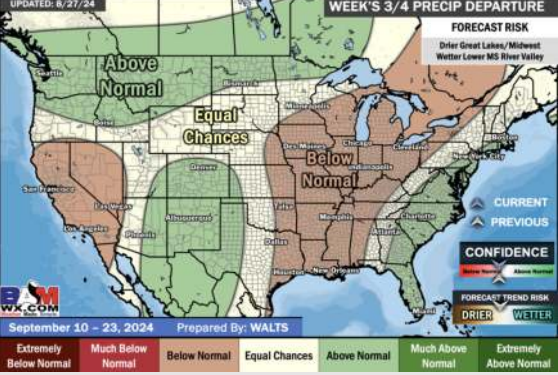
Next 7 Day Total Precipitation



8-14 Day % of Average Precip.



15-30 Day % of Average Precip.



- Temps are expected to be below normal for the week 1 timeframe. Scattered rain chances are expected daily through the next week.
- Slightly below normal temperatures are favored into week 2 with above average rain chances.
- Above normal temperatures and below average precipitation chances are expected for the weeks 3/4 timeframe. As we approach the beginning of September, Atlantic tropical activity looks to ramp up. We will be monitoring closely and providing updates as needed.