

Houston Pilots Forecast Package



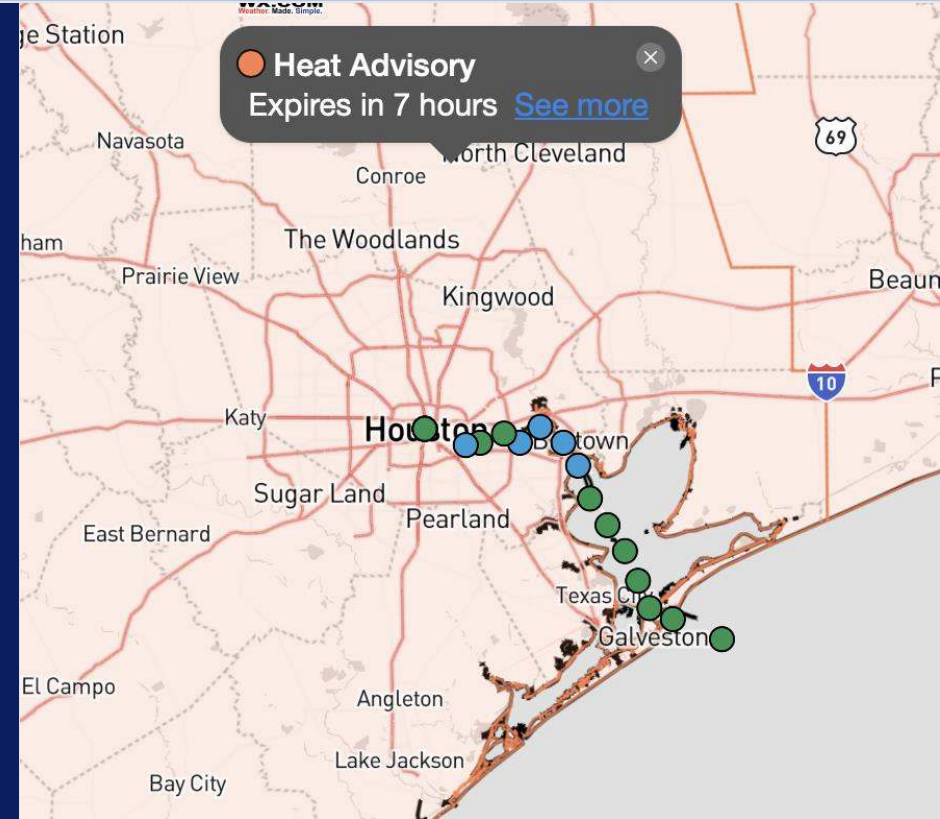
Updated: 1:00 PM CT

Saturday, August 3, 2024

Forecaster: Adam Feick

Weather Headlines

- Low end storm chances return to the area early Sunday Morning
- **Tropical Depression Four is likely to become Tropical Storm Debby over the next 24 hours; favored to Impact W Coast of Florida – See Latest Updates Below**
- Patchy fog will be present West of Galveston Bay, however not anticipating visibility impacts to the stations!



Current Radar: 12:45 PM CT

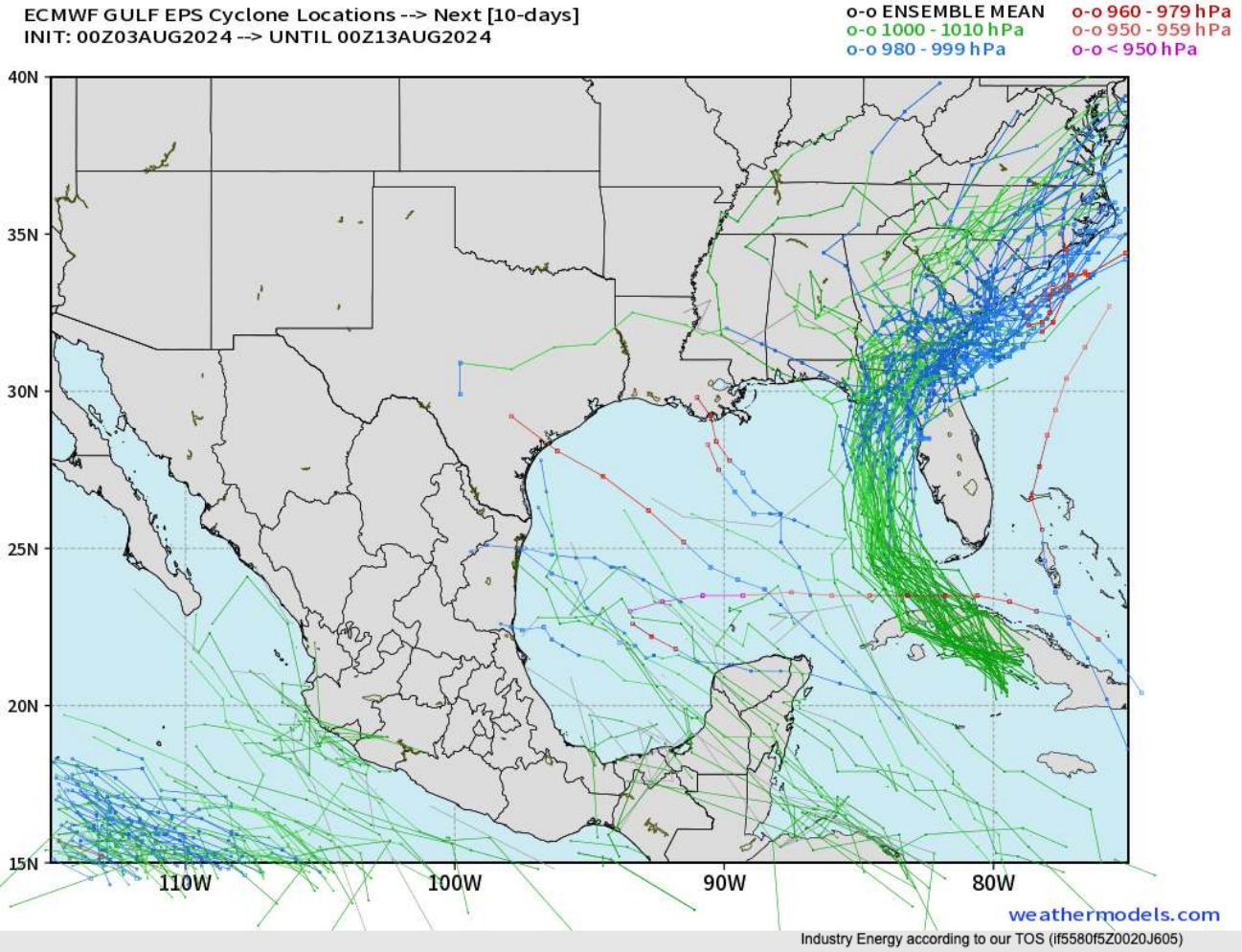


As always, please do not hesitate to reach out to us with any forecast questions via the chat option on Clarity or our on-call number, **(317)-560-8122** press 1 for forecast questions.

Houston Pilots Tropical Update



European Model Next 10 Days - Tropical Tracks



Not in favor of any tropical threats over the next 10 days to the HOU area.

Tropical Depression Four has developed and is favored to strengthen into Tropical Storm Debby over the next 24 hours, eventually impacting the western coast of Florida. See additional graphic on next slide for more in depth discussion on this.

Houston Pilots Tropical Update

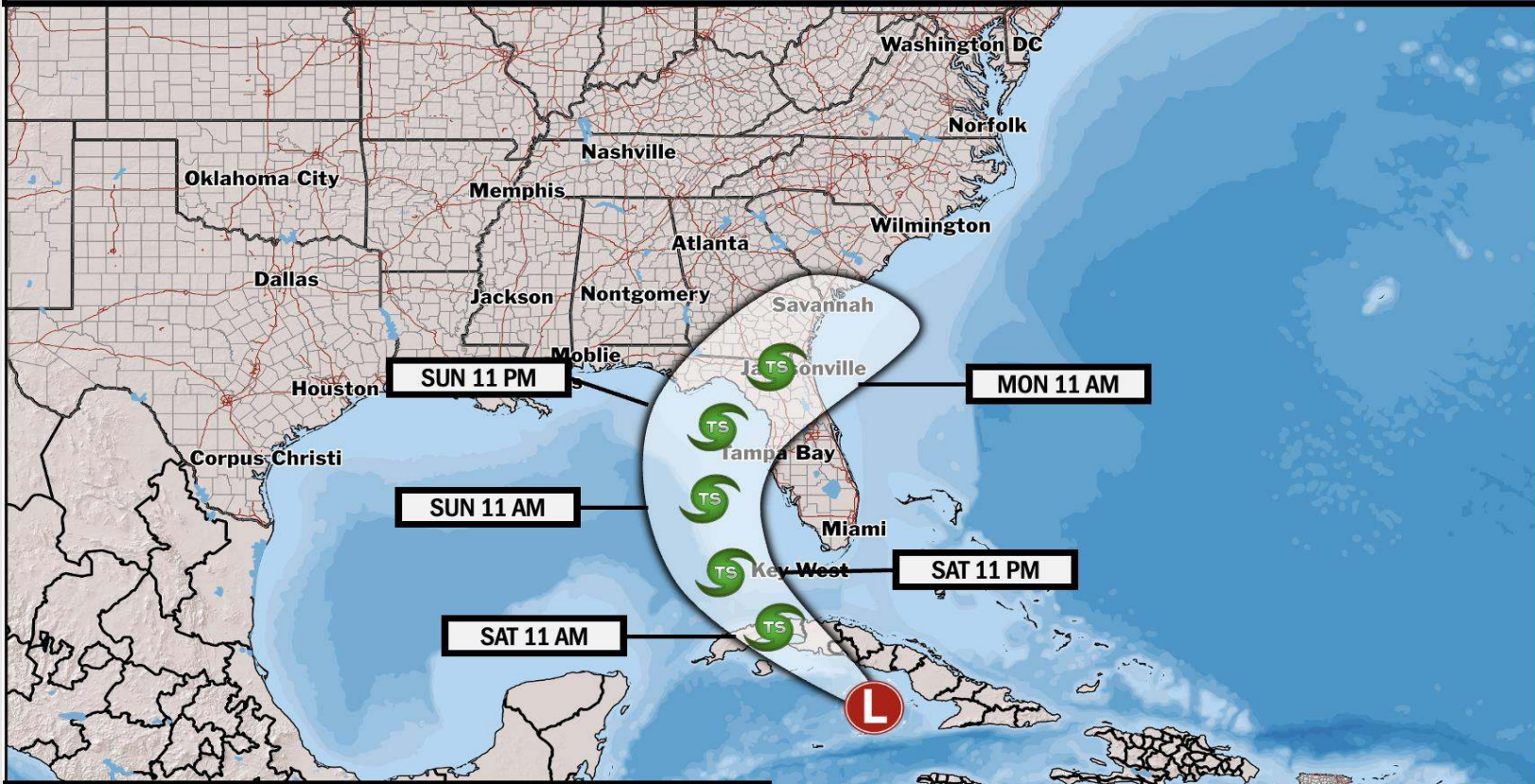


Tropical Depression Four

FORECASTER: Lowry

August 2nd – August 5th, 2024

UPDATED: 8/2/24 11:35 PM ET



Forecast Discussion:

- Formation into Tropical Storm Debby is likely over the next 24 hours.
- Currently favoring landfall in N Florida late Sunday Night
- Further intensification into a weak hurricane remains unlikely but cannot be ruled out.

Houston Pilots Visibility Chart (miles)



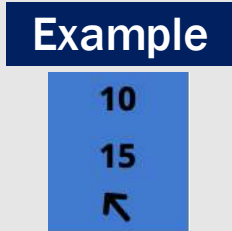
Forecast Confidence



Visibility	Sat 2 pm	Sat 3 pm	Sat 4 pm	Sat 5 pm	Sat 6 pm	Sat 7 pm	Sat 8 pm	Sat 9 pm	Sat 10 pm	Sat 11 pm	Sun 12 am	Sun 1 am	Sun 2 am	Sun 3 am	Sun 4 am	Sun 5 am	Sun 6 am	Sun 7 am	Sun 8 am	Sun 9 am	Sun 10 am	Sun 11 am	Sun 12 pm	Sun 1 pm
Houston Pilots N - 610 Bridge	10.1	10.1	10.1	10.1	10.1	10.1	10.1	10.1	10.1	10.1	10.1	10.1	10.1	10.1	10.1	10.1	10.1	10.1	10.1	10.1	10.1	10.1	10.1	10.1
Houston Pilots M - Kinder 1	10.1	10.1	10.1	10.1	10.1	10.1	10.1	10.1	10.1	10.1	10.1	10.1	10.1	10.1	10.1	10.1	10.1	10.1	10.1	10.1	10.1	10.1	10.1	10.1
Houston Pilots L - Greens Bayou	10.1	10.1	10.1	10.1	10.1	10.1	10.1	10.1	10.1	10.1	10.1	10.1	10.1	10.1	10.1	10.1	10.1	10.1	10.1	10.1	10.1	10.1	10.1	10.1
Houston Pilots K - Shell Crude	10.1	10.1	10.1	10.1	10.1	10.1	10.1	10.1	10.1	10.1	10.1	10.1	10.1	10.1	10.1	10.1	10.1	10.1	10.1	10.1	10.1	10.1	10.1	10.1
Houston Pilots J - Lynchburg Ferries	10.1	10.1	10.1	10.1	10.1	10.1	10.1	10.1	10.1	10.1	10.1	10.1	10.1	10.1	10.1	10.1	10.1	10.1	10.1	10.1	10.1	10.1	10.1	10.1
Houston Pilots I - Exxon 3	10.1	10.1	10.1	10.1	10.1	10.1	10.1	10.1	10.1	10.1	10.1	10.1	10.1	10.1	10.1	10.1	10.1	10.1	10.1	10.1	10.1	10.1	10.1	10.1
Houston Pilots H - Morgans Point	10.1	10.1	10.1	10.1	10.1	10.1	10.1	10.1	10.1	10.1	10.1	10.1	10.1	10.1	10.1	10.1	10.1	10.1	10.1	10.1	10.1	10.1	10.1	10.1
Houston Pilots G - 75/76	10.1	10.1	10.1	10.1	10.1	10.1	10.1	10.1	10.1	10.1	10.1	10.1	10.1	10.1	10.1	10.1	10.1	10.1	10.1	10.1	10.1	10.1	12	12
Houston Pilots F - 63/64	10.1	10.1	10.1	10.1	10.1	10.1	10.1	10.1	10.1	10.1	10.1	10.1	10.1	10.1	10.1	10.1	10.1	10.1	10.1	10.1	10.1	10.1	12	12
Houston Pilots E - 51/52	10.1	10.1	10.1	10.1	10.1	10.1	10.1	10.1	10.1	10.1	10.1	10.1	10.1	10.1	10.1	10.1	10.1	10.1	10.1	10.1	10.1	10.1	12	12
Houston Pilots D - 37/38	10.1	10.1	10.1	10.1	10.1	10.1	10.1	10.1	10.1	10.1	10.1	10.1	10.1	10.1	10.1	10.1	10.1	10.1	10.1	10.1	10.1	10.1	12	12
Houston Pilots C - 25/26	10.1	10.1	10.1	10.1	10.1	10.1	10.1	10.1	10.1	10.1	10.1	10.1	10.1	10.1	10.1	10.1	10.1	10.1	10.1	10.1	10.1	10.1	12	12
Houston Pilots B - 11/12	10.1	10.1	10.1	10.1	10.1	10.1	10.1	10.1	10.1	10.1	10.1	10.1	10.1	10.1	10.1	10.1	10.1	10.1	10.1	10.1	10.1	10.1	12	12
Houston Pilots A - 1 & 2 Bravo	10.1	10.1	10.1	10.1	10.1	10.1	10.1	9	10.1	10.1	10.1	10.1	10.1	10.1	10.1	9	9	10.1	7.9	7.9	10.1	10.1	12	12

NOTE: This is automated data that may/may not agree with the official BAM thinking that's found on the daily slides or special visibility report slides. This data should be used as a guide only

Houston Pilots Wind Chart



Wind	Sat 2 pm	Sat 3 pm	Sat 4 pm	Sat 5 pm	Sat 6 pm	Sat 7 pm	Sat 8 pm	Sat 9 pm	Sat 10 pm	Sat 11 pm	Sun 12 am	Sun 1 am	Sun 2 am	Sun 3 am	Sun 4 am	Sun 5 am	Sun 6 am	Sun 7 am	Sun 8 am	Sun 9 am	Sun 10 am	Sun 11 am	Sun 12 pm	Sun 1 pm
Houston Pilots N - 610 Bridge	3 9 ↘	3 8 ↘	3 8 ↘	3 8 ↘	3 8 ↘	3 7 ↘	3 7 ↘	3 8 ↘	3 8 ↘	3 9 ↘	3 8 ↘	3 8 ↘	3 8 ↘	3 8 ↘	3 8 ↘	3 8 ↘	3 7 ↘	3 7 ↘	3 7 ↘	3 6 ↘	3 7 ↘	3 7 ↘	3 7 ↘	3 8 ↘
Houston Pilots M - Kinder 1	3 9 ↘	3 8 ↘	3 8 ↘	3 8 ↘	3 8 ↘	3 7 ↘	3 7 ↘	3 8 ↘	3 8 ↘	3 9 ↘	3 8 ↘	3 8 ↘	3 8 ↘	3 8 ↘	3 8 ↘	3 8 ↘	3 7 ↘	3 7 ↘	3 7 ↘	3 6 ↘	3 7 ↘	3 7 ↘	3 7 ↘	3 8 ↘
Houston Pilots L - Greens Bayou	3 9 ↘	3 8 ↘	3 9 ↘	3 8 ↘	3 8 ↘	3 7 ↘	3 7 ↘	3 8 ↘	3 8 ↘	3 7 ↘	3 7 ↘	3 7 ↘	3 7 ↘	3 7 ↘	3 7 ↘	3 7 ↘	3 7 ↘	3 6 ↘	3 6 ↘	3 6 ↘	3 7 ↘	3 7 ↘	3 7 ↘	3 8 ↘
Houston Pilots K - Shell Crude	3 8 ↘	3 7 ↘	3 8 ↘	3 8 ↘	3 9 ↘	3 8 ↘	3 7 ↘	3 8 ↘	3 8 ↘	3 8 ↘	3 7 ↘	3 7 ↘	3 7 ↘	3 7 ↘	3 7 ↘	3 7 ↘	3 7 ↘	3 6 ↘	3 6 ↘	3 6 ↘	3 6 ↘	3 7 ↘	3 7 ↘	3 8 ↘
Houston Pilots J - Lynchburg Ferries	3 8 ↘	3 7 ↘	3 8 ↘	3 8 ↘	3 8 ↘	3 8 ↘	3 7 ↘	3 7 ↘	3 8 ↘	3 8 ↘	3 7 ↘	3 7 ↘	3 7 ↘	3 7 ↘	3 7 ↘	3 7 ↘	2 6 ↘	2 6 ↘	3 6 ↘	2 6 ↘	2 6 ↘	3 7 ↘	3 7 ↘	3 8 ↘
Houston Pilots I - Exxon 3	5 9 ↘	6 9 ↘	6 9 ↘	6 10 ↘	6 9 ↘	6 9 ↘	6 9 ↘	6 9 ↘	7 9 ↘	7 10 ↘	7 10 ↘	7 9 ↘	7 10 ↘	7 10 ↘	6 9 ↘	6 9 ↘	6 9 ↘	6 9 ↘	6 9 ↘	6 8 ↘	5 8 ↘	5 8 ↘	5 8 ↘	5 9 ↘
Houston Pilots H - Morgans Point	5 9 ↘	6 9 ↘	6 9 ↘	6 10 ↘	6 9 ↘	6 10 ↘	6 10 ↘	7 9 ↘	7 9 ↘	7 10 ↘	7 10 ↘	7 10 ↘	7 10 ↘	7 10 ↘	6 9 ↘	6 9 ↘	6 9 ↘	6 9 ↘	6 9 ↘	6 8 ↘	5 8 ↘	5 8 ↘	5 8 ↘	5 9 ↘
Houston Pilots G - 75/76	3 9 ↘	5 9 ↘	6 9 ↘	6 10 ↘	6 10 ↘	7 12 ↘	8 12 ↘	8 10 ↘	8 12 ↘	8 12 ↘	8 12 ↘	8 12 ↘	8 12 ↘	8 12 ↘	8 12 ↘	8 12 ↘	7 10 ↘	7 10 ↘	7 10 ↘	6 10 ↘	6 9 ↘	6 9 ↘	6 8 ↘	5 9 ↘
Houston Pilots F - 63/64	3 8 ↘	5 8 ↘	5 9 ↘	6 10 ↘	6 10 ↘	7 12 ↘	8 12 ↘	8 12 ↘	8 12 ↘	8 12 ↘	8 12 ↘	8 12 ↘	8 12 ↘	8 12 ↘	8 12 ↘	8 12 ↘	8 10 ↘	7 10 ↘	7 10 ↘	6 10 ↘	6 9 ↘	6 9 ↘	6 8 ↘	5 8 ↘
Houston Pilots E - 51/52	3 8 ↘	3 8 ↘	5 9 ↘	6 10 ↘	7 10 ↘	8 12 ↘	8 12 ↘	8 12 ↘	8 12 ↘	8 12 ↘	8 12 ↘	8 12 ↘	8 12 ↘	8 12 ↘	8 12 ↘	8 12 ↘	8 10 ↘	7 10 ↘	7 10 ↘	6 10 ↘	6 9 ↘	6 9 ↘	6 8 ↘	5 8 ↘
Houston Pilots D - 37/38	3 7 ↘	3 7 ↘	5 9 ↘	6 10 ↘	7 10 ↘	7 12 ↘	8 12 ↘	8 12 ↘	8 12 ↘	8 12 ↘	8 12 ↘	8 12 ↘	8 12 ↘	8 12 ↘	8 12 ↘	8 12 ↘	8 12 ↘	7 10 ↘	7 10 ↘	7 10 ↘	6 9 ↘	6 9 ↘	6 8 ↘	5 8 ↘
Houston Pilots C - 25/26	3 7 ↘	3 7 ↘	5 9 ↘	6 9 ↘	7 10 ↘	7 12 ↘	8 12 ↘	8 12 ↘	8 12 ↘	8 12 ↘	8 12 ↘	8 12 ↘	8 12 ↘	8 12 ↘	8 12 ↘	8 12 ↘	8 12 ↘	7 10 ↘	7 10 ↘	7 10 ↘	6 10 ↘	6 9 ↘	6 8 ↘	5 8 ↘
Houston Pilots B - 11/12	3 7 ↘	5 7 ↘	6 9 ↘	6 10 ↘	7 10 ↘	7 12 ↘	7 12 ↘	7 12 ↘	7 12 ↘	7 12 ↘	7 12 ↘	7 12 ↘	7 12 ↘	7 12 ↘	7 12 ↘	7 12 ↘	7 10 ↘	6 10 ↘	6 10 ↘	6 10 ↘	6 10 ↘	6 9 ↘	6 8 ↘	5 8 ↘
Houston Pilots A - 1 & 2 Bravo	3 8 ↘	5 7 ↘	6 9 ↘	6 10 ↘	7 10 ↘	7 12 ↘	8 13 ↘	8 12 ↘	8 13 ↘	8 13 ↘	8 13 ↘	8 13 ↘	8 13 ↘	8 13 ↘	8 13 ↘	8 13 ↘	8 13 ↘	8 13 ↘	8 13 ↘	8 12 ↘	7 12 ↘	7 10 ↘	6 9 ↘	5 8 ↘

NOTE: This is automated data that may/may not agree with the official BAM thinking that's found on the daily slides. This data should be used as a guide only.

Houston Pilots: SAT. 8/3/2024



Forecast Discussion

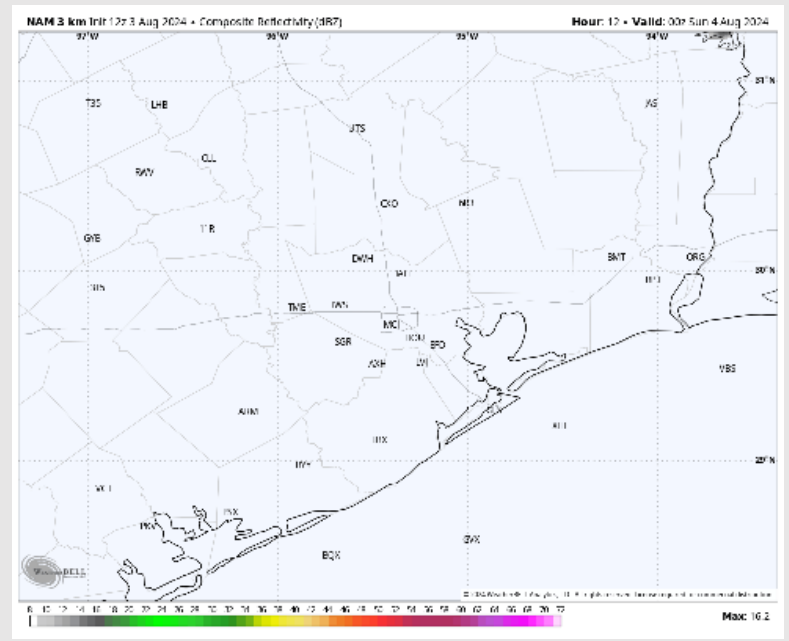
Precip: Dry conditions are favored this afternoon through the overnight hours.

Wind: Winds will be out of the S/SW N of Morgan's Point: Winds will be at 2 – 7 kts throughout the evening and night. S of Morgan's Point: Winds be at 10 – 15 kts throughout evening and overnight

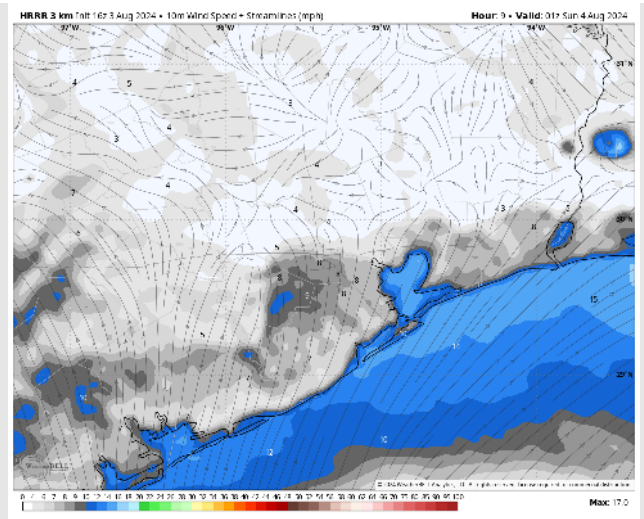
Low Temps: N of Morgan's Point: Upper 70s F. S of Morgan's Point: Low 80sF.

Visibility: Favoring low end patchy fog potential to remain in areas just to the West of Galv. Bay however this risk is not favored to impact stations.

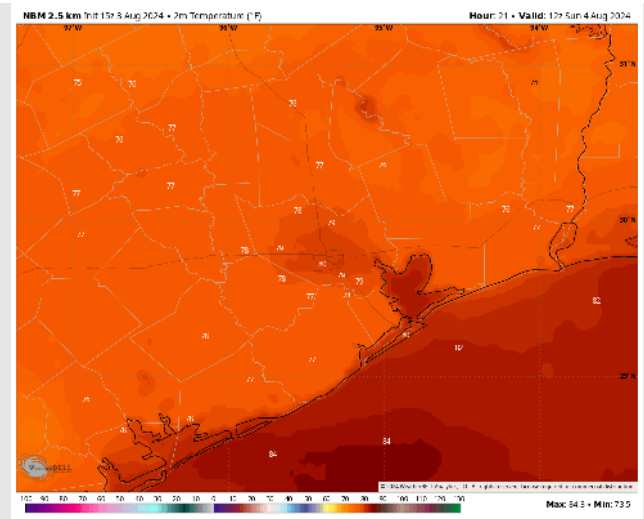
Precip Image: 7 PM CT



Wind Speed:
8 PM CT



Low Temps
Today



Houston Pilots: SUN. 8/4/2024



Forecast Discussion

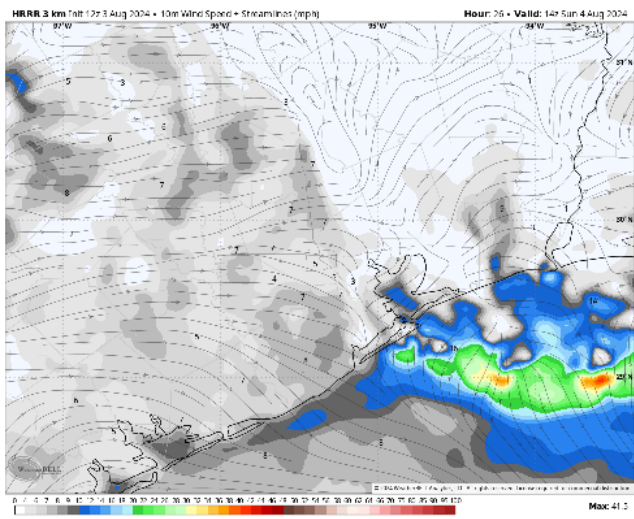
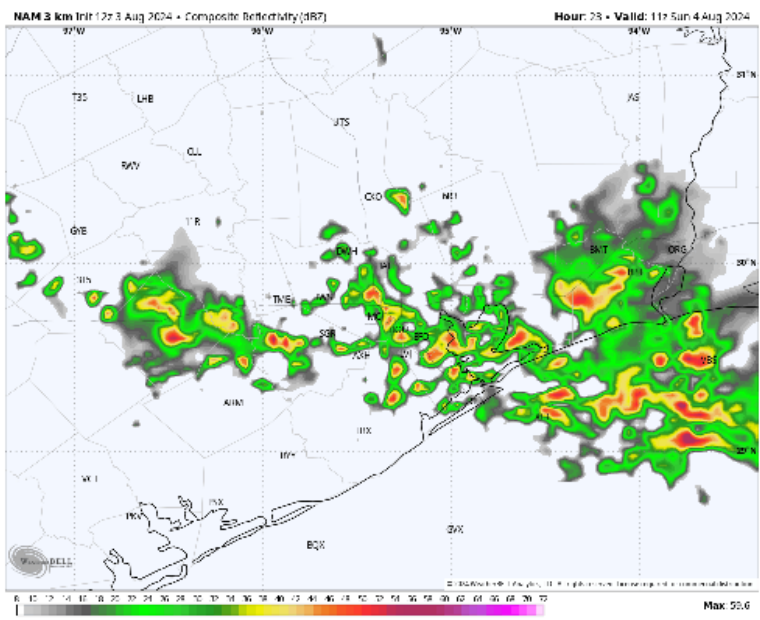
Precip: Scattered showers and storms (40%) will be in play from 4 AM through 10PM for ALL stations.

Wind: Winds are favored to be calm and variable for much of the day. **N of Morgan's Point:** Winds at 3 – 5 kts for the entire day. **S of Morgan's Point:** Winds at 3 – 7 kts for the entire day. **Storms can bring wind gusts 30-40 kts at any station**

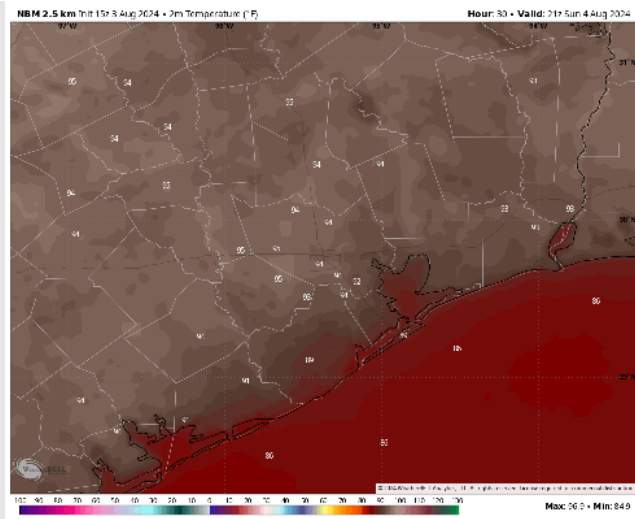
High Temps: **N of Morgan's Point:** Mid 90s F. **S of Morgan's Point:** Upper 80s F

Visibility: Not anticipating any fog concerns for Sunday. However, visibility could be slightly reduced due to AM Storms and showers.

Precip Image: 6 AM CT



Wind Speed:
9 AM CT



High Temps
Sunday

Houston Pilots: MON. 8/5/2024



Forecast Discussion

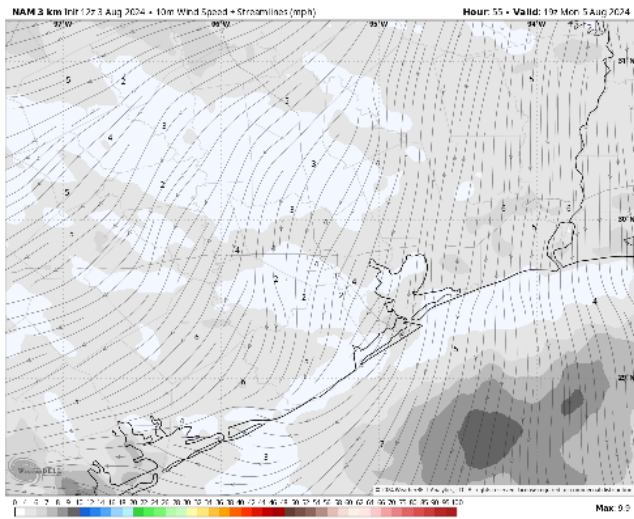
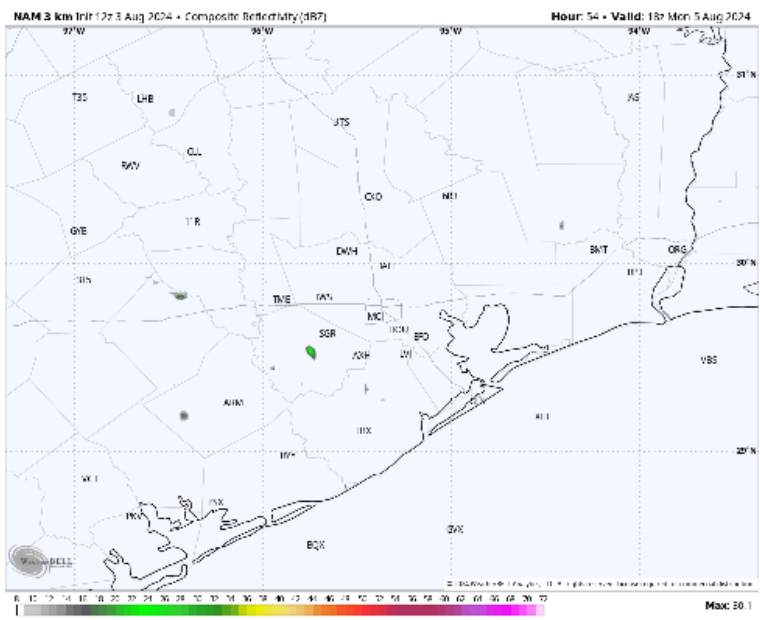
Precip: Stray hit and miss showers will be possible (20%) between 8 AM and 8 PM at ALL stations

Wind: Winds out of the SW will shift clockwise to be out of the NW by 5 AM, then will shift counter-clockwise back out of the SW by 1 PM. **N of Morgan's Point:** Winds at 3-7 kts throughout Monday. **S of Morgan's Point:** Winds at 3-7 kts throughout Monday.

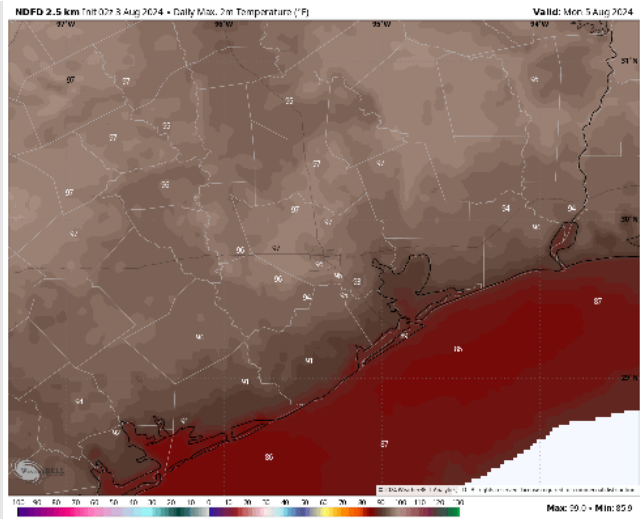
High Temps: **N of Morgan's Point:** Mid 90s F. **S of Morgan's Point:** Upper 80s F.

Visibility: Not anticipating any fog concerns for Monday.

Precip Image: 1 PM CT

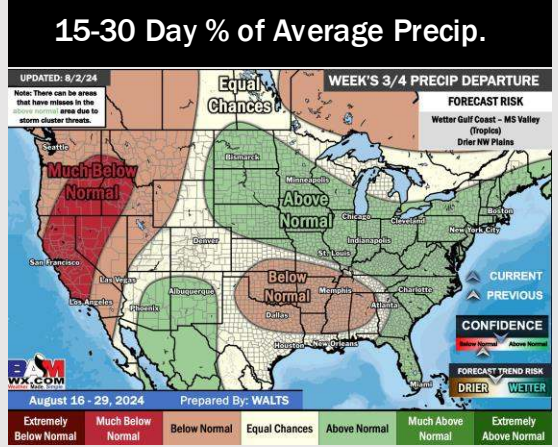
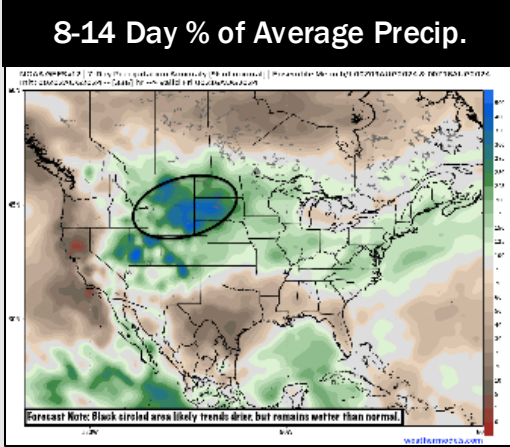
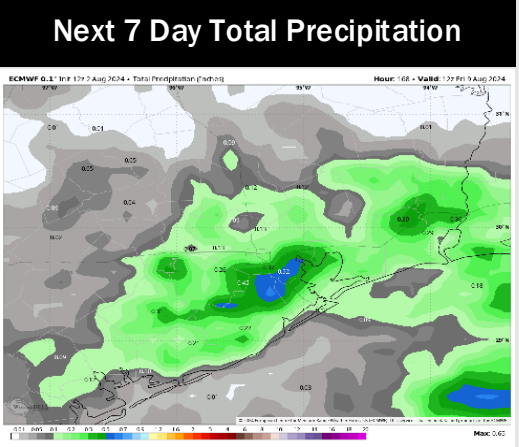
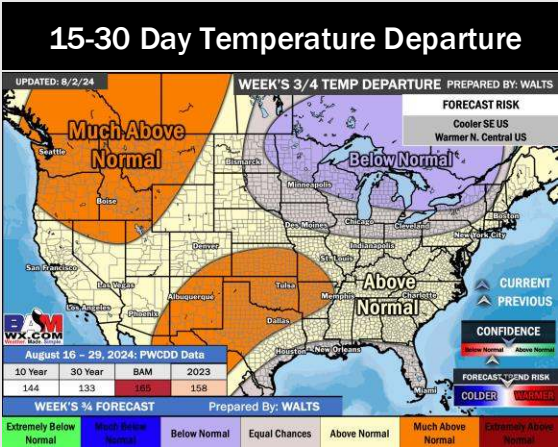
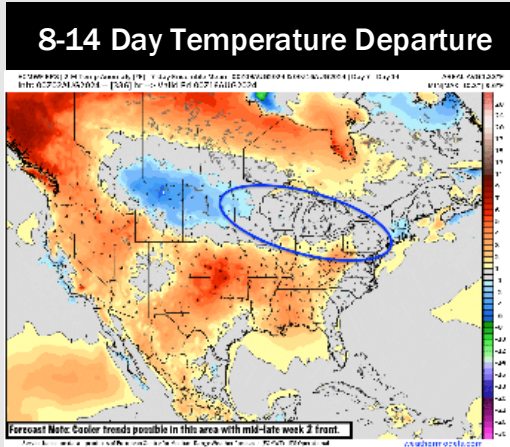
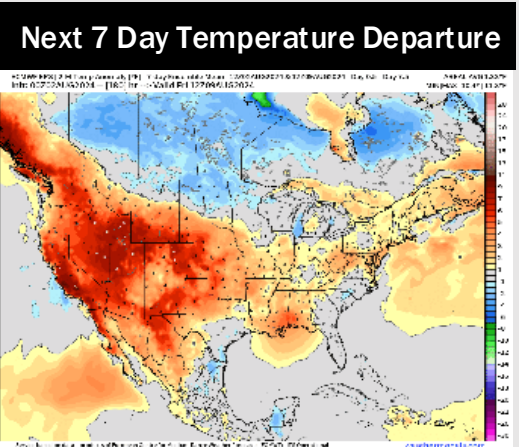


Wind Speed
2 PM CT



High Temps
Monday

Houston Pilots: 8/3/24



- Temps are expected to be near normal for the week 1 timeframe. Expecting a generally drier week 1, with only minor precip chances throughout the week.
- Seasonable temperatures and below normal precipitation chances are favored for the week 2 timeframe.
- Near normal temperatures and precipitation chances are expected for the weeks 3/4 timeframe.

Houston Pilots Tropical Update

Late August and Beyond

